

PRIME CONSULTANT:



SERVICES PROVIDED:

- LANDSCAPE ARCHITECTURE
- CIVIL ENGINEERING
- COASTAL ENGINEERING
- ELECTRICAL ENGINEERING
- SURVEYING & MAPPING
- COST ESTIMATING

CONCEPTUAL DESIGNER:

WEST 8

333 HUDSON STREET
SUITE 905
NEW YORK CITY, NY 10013

**NORTH
SHORE
OPEN
SPACE
PARK**

B

**BETWEEN 79TH AND 87TH STREETS,
EAST OF COLLINS AVENUE**

SEAL:

REVISIONS:

- 1
- 2
- 3
- 4
- 5
- 6
- 7
- 8
- 9
- 10

SUBMITTAL:
30% SD

SCALE:
NTS

DATE:
NOV 14, 2016

CGA PROJECT NUMBER:

SHEET TITLE:
ILLUSTRATIVE SITE PLAN

SHEET NUMBER:

L000a

DRAWING FILE:

4

3

2

1

PRIME CONSULTANT:



SERVICES PROVIDED:
LANDSCAPE ARCHITECTURE
CIVIL ENGINEERING
COASTAL ENGINEERING
ELECTRICAL ENGINEERING
SURVEYING & MAPPING
COST ESTIMATING

CONCEPTUAL DESIGNER:
WEST 8
333 HUDSON STREET
SUITE 905
NEW YORK CITY, NY 10013

NORTH SHORE OPEN SPACE PARK

BETWEEN 79TH AND 87TH STREETS,
EAST OF COLLINS AVENUE

REVISIONS:

- 1
- 2
- 3
- 4
- 5
- 6
- 7
- 8
- 9
- 10

SCALE:
NTS

DATE:
NOV 14, 2016

CGA PROJECT NUMBER:

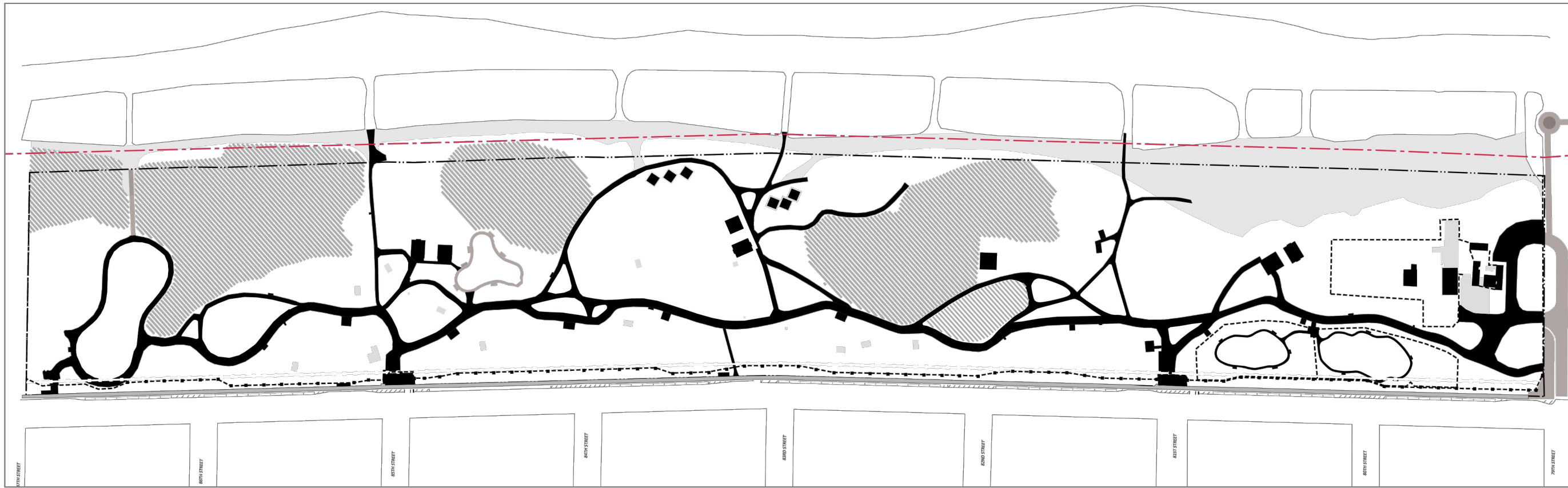
SHEET TITLE:

**ILLUSTRATIVE SITE PLAN
WITH ALTERNATE
PLAYGROUND LOCATION**

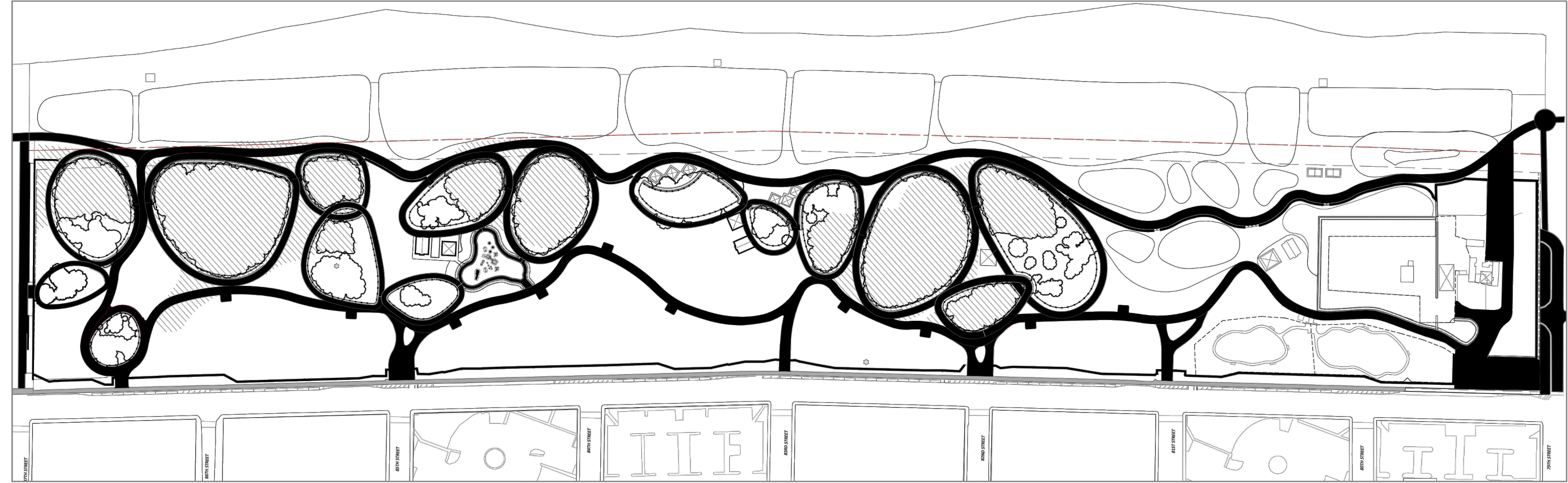
SHEET NUMBER:

L000b

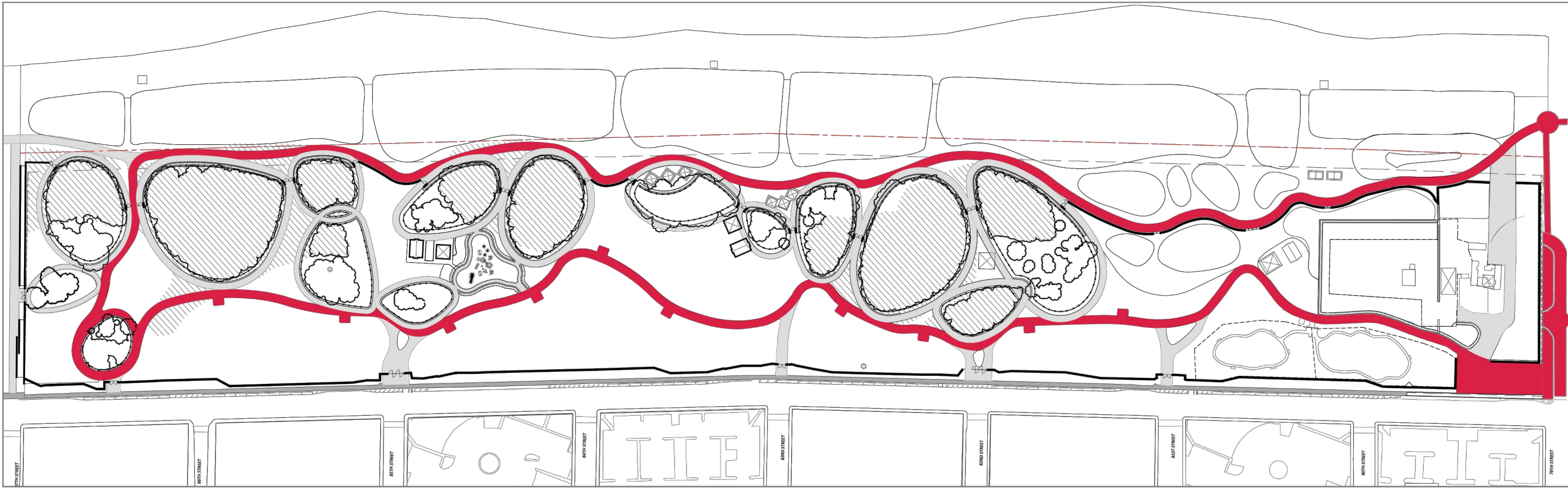
1



1 EXISTING CIRCULATION DIAGRAM
- NTS



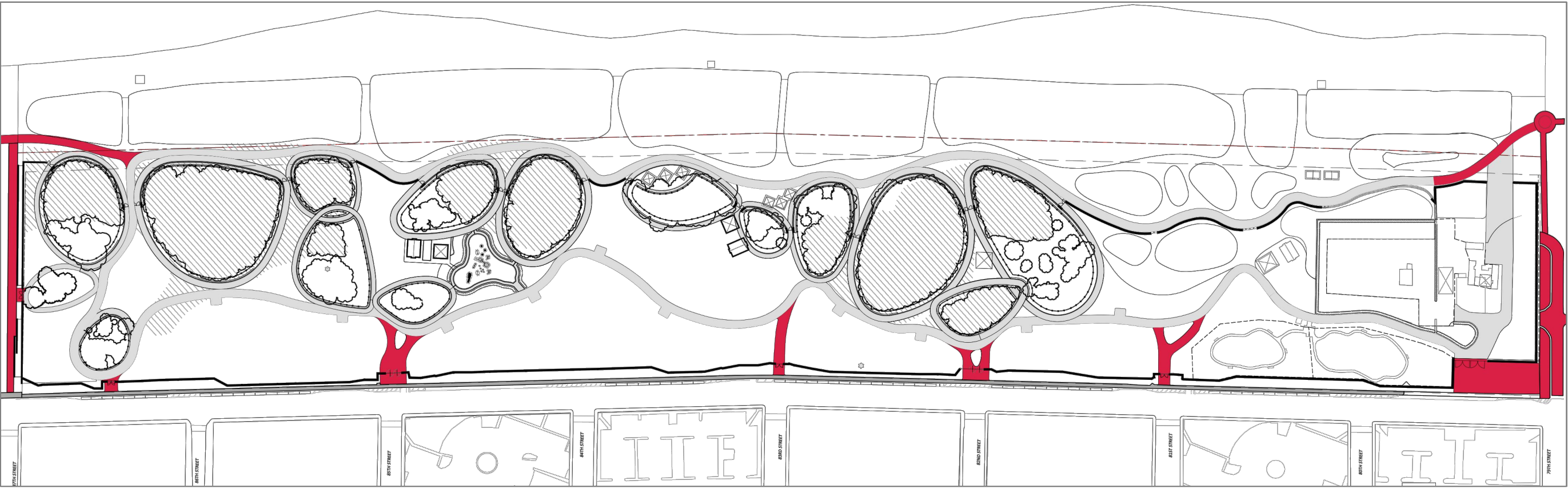
2 PROPOSED CIRCULATION DIAGRAM - ALL PATHWAYS (PH 1)
- NTS



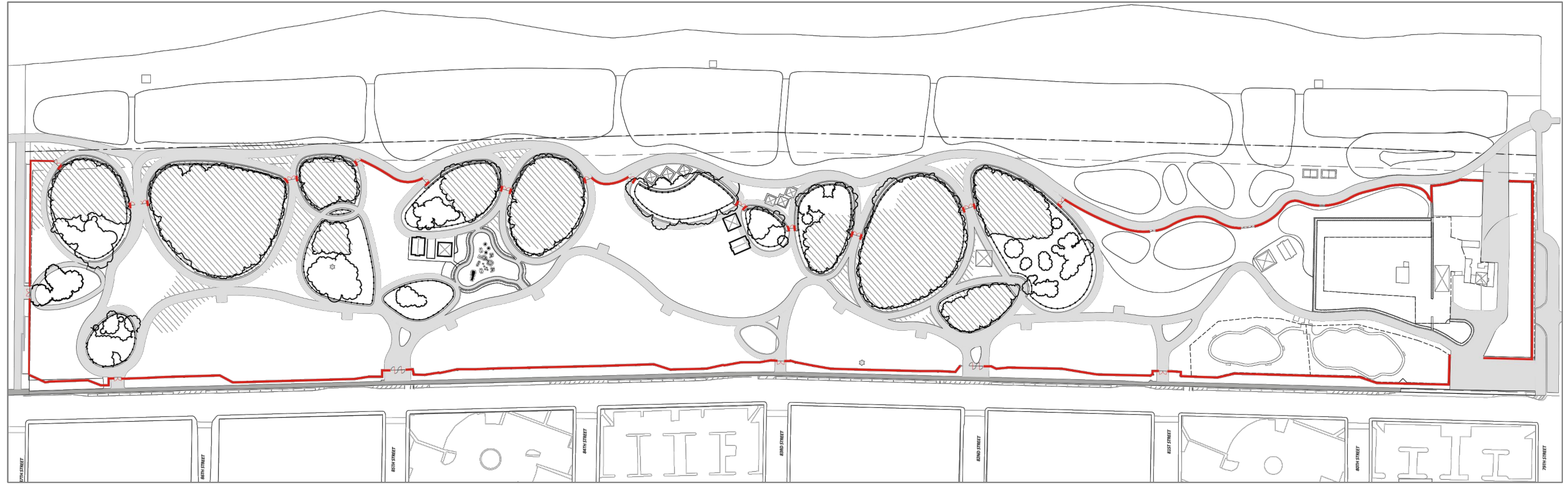
3 PROPOSED PATHWAY DIAGRAM - LOOP (PH 1)
- NTS



4 PROPOSED PATHWAY DIAGRAM - CONSERVATION ISLAND (PH 1)
- NTS



5 PROPOSED PATHWAY DIAGRAM - ACCESS (PH 1)
- NTS



6 PROPOSED ENCLOSURE DIAGRAM (PH 1)
- NTS

CLIENT:
MIAMI BEACH
CITY OF MIAMI BEACH
1700 CONVENTION CENTER DRIVE
MIAMI BEACH, FL 33139



Calvin, Giordano &
Associates, Inc.
1800 Eller Drive, Suite 600 Fort Lauderdale,
Florida 33316
Phone: 954-591-7791 • Fax: 954-591-5907
CERTIFICATES OF AUTHORIZATION:
LANDSCAPE ARCHITECTURE: LC00000339
ENGINEERING: 514
SURVEYING: 6791

SERVICES PROVIDED:
LANDSCAPE ARCHITECTURE
CIVIL ENGINEERING
CONSTRUCTION ENGINEERING
ELECTRICAL ENGINEERING
SURVEYING & MAPPING
COST ESTIMATING

CONCEPTUAL DESIGNER:
WEST 8
333 HUDSON STREET
SUITE 905
NEW YORK CITY, NY 10013

ARCHITECTURAL CONSULTANT:
SYNALOVSKI ROMANIK SAYE, LLC
1800 ELLER DRIVE
SUITE 500
FORT LAUDERDALE, FL 33316
FIRM LICENSE: AA26001863

GEOTECHNICAL CONSULTANT:
NUTTING ENGINEERS OF FLORIDA, INC.
2051 NW 112TH AVENUE
SUITE 120
MIAMI, FL 33176
CERTIFICATE OF AUTHORIZATION: XXXX

NORTH SHORE OPEN SPACE PARK

BETWEEN 79TH AND 87TH STREETS,
EAST OF COLLINS AVENUE

SEAL:

REVISIONS:
1
2
3
4
5
6
7
8
9
10

SUBMITTAL:
30% SD

SCALE:
NTS

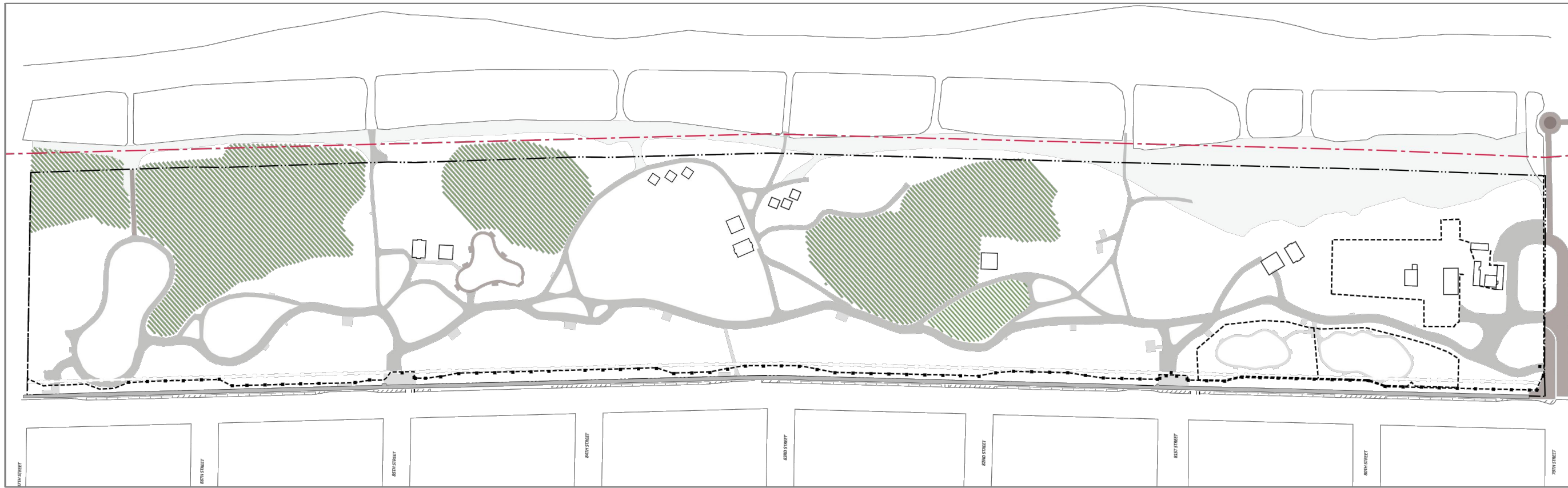
DATE:
NOV 14, 2016

CGA PROJECT NUMBER:

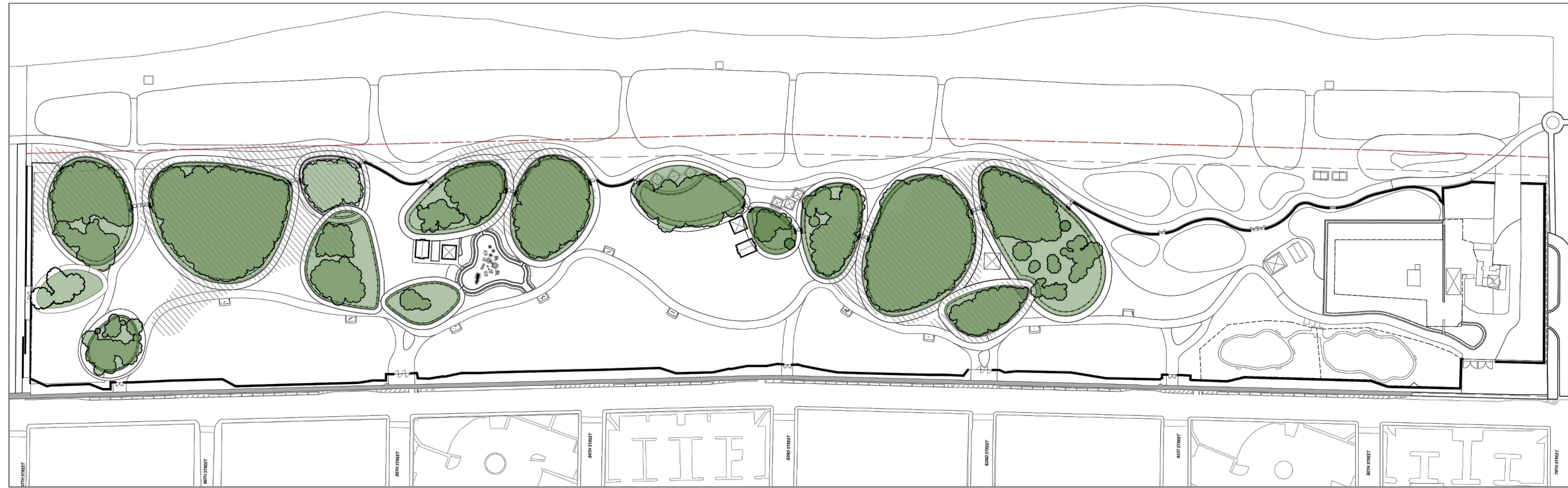
SHEET TITLE:
ILLUSTRATIVE SITE
DIAGRAMS

SHEET NUMBER:

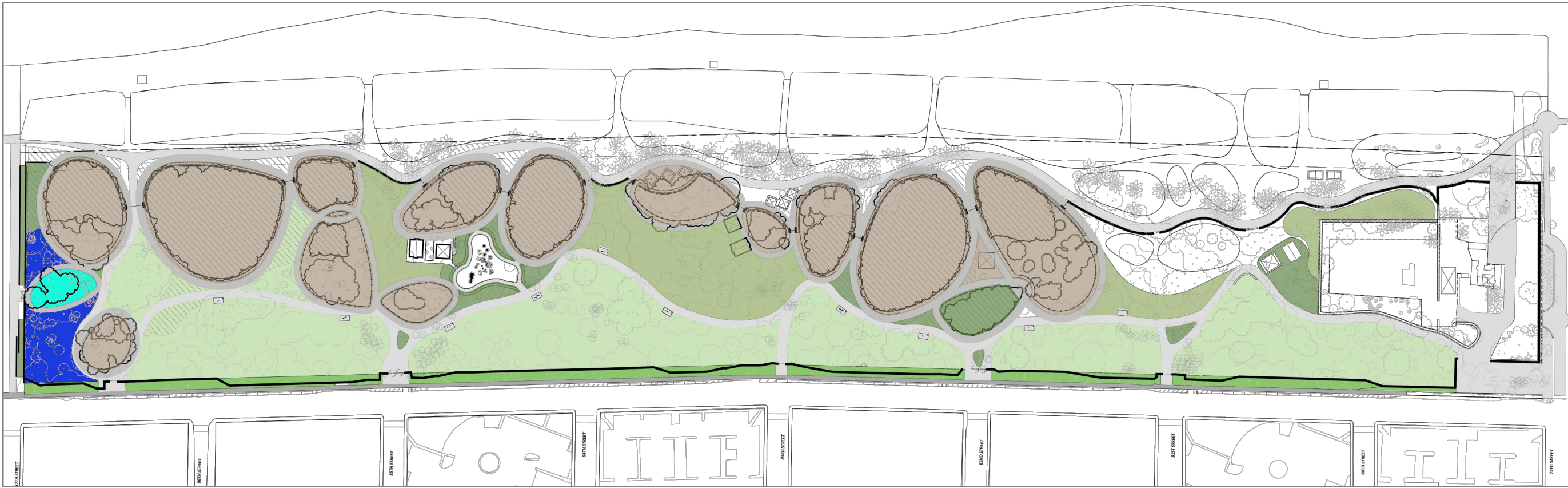
L001



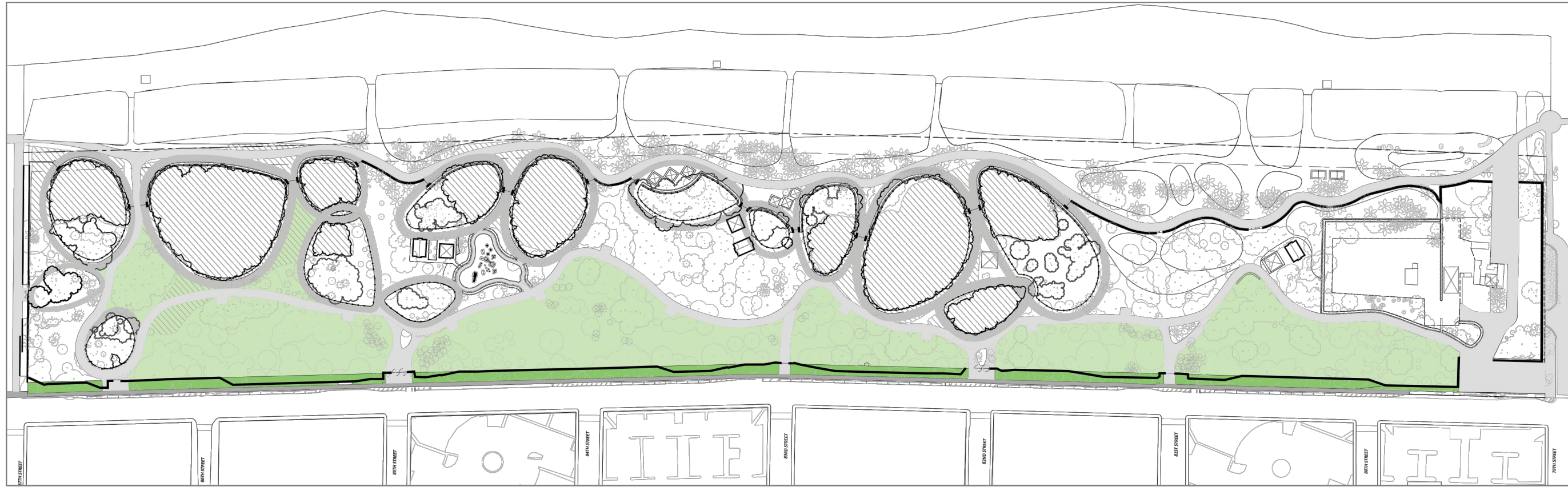
1 EXISTING FENCED-IN AREAS DIAGRAM
- NTS



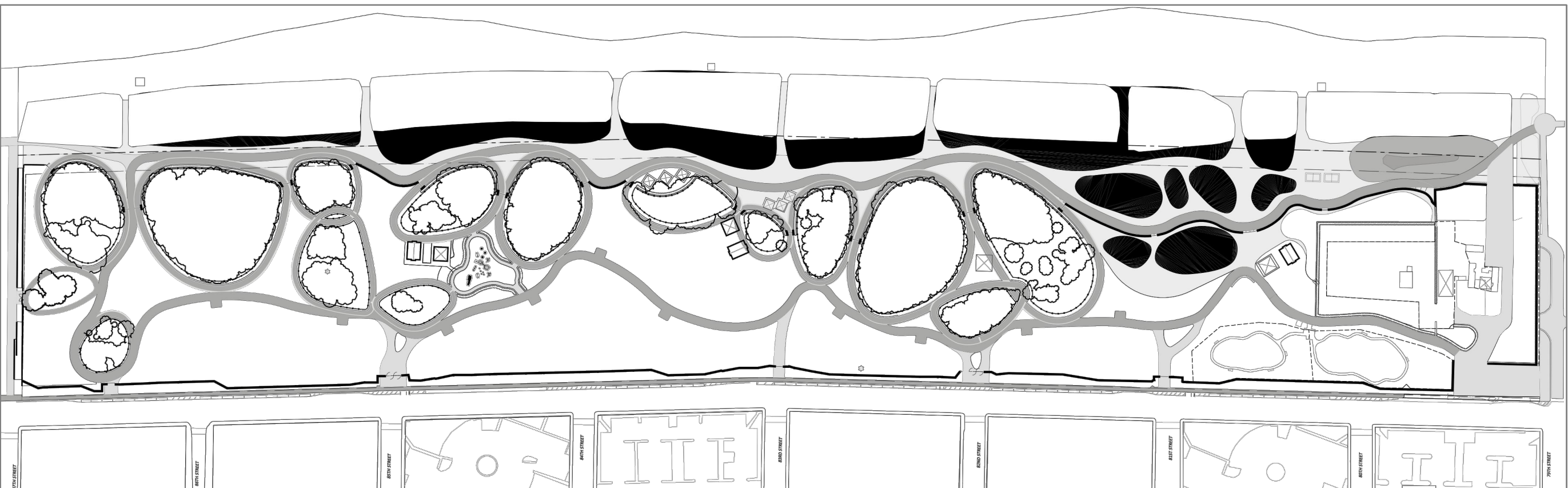
2 PROPOSED CONSERVATION AREA DIAGRAM (PH 1)
- NTS



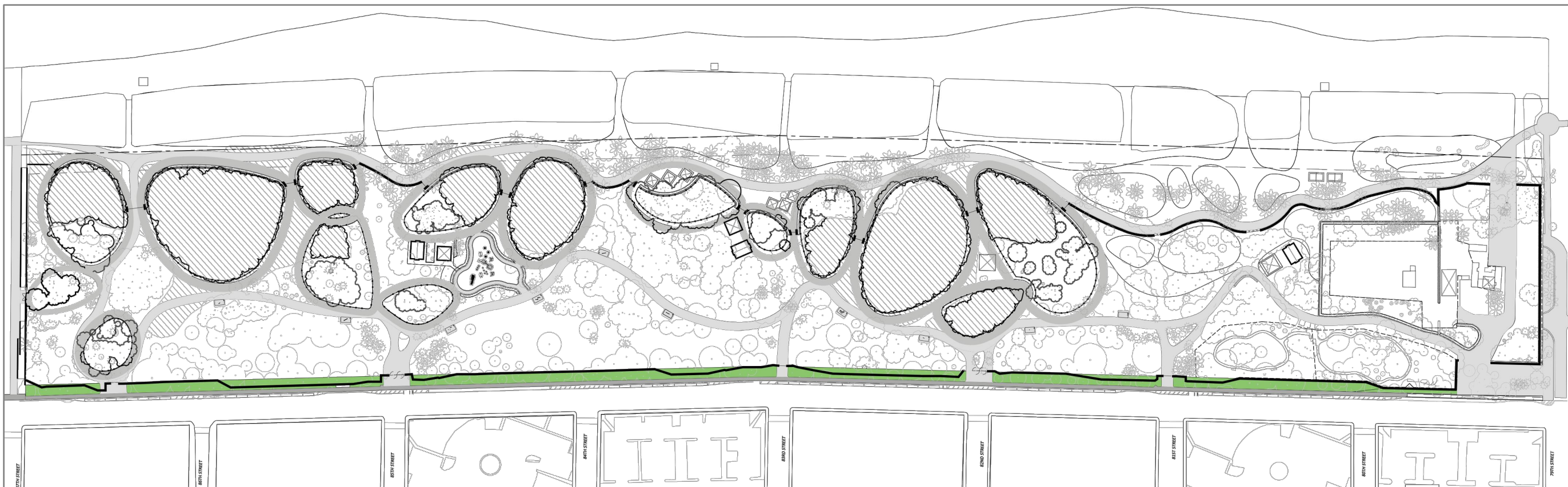
3 PROPOSED PLANTING DIAGRAM - ALL AREAS (PH 1)
- NTS



4 PROPOSED PLANTING DIAGRAM - LAWN (PH 1)
- NTS



5 PROPOSED PLANTING DIAGRAM - DUNES (PH 1)
- NTS



6 PROPOSED PLANTING DIAGRAM - SETBACK (PH 1)
- NTS

CLIENT:
MIAMI BEACH
CITY OF MIAMI BEACH
1700 CONVENTION CENTER DRIVE
MIAMI BEACH, FL 33139



Calvin, Giordano &
Associates, Inc.
1800 Eller Drive, Suite 600 Fort Lauderdale,
Florida 33316
Phone: 954-521-7791 • Fax: 954-521-5507
CERTIFICATES OF AUTHORIZATION:
LANDSCAPE ARCHITECTURE: LC00000339
ENGINEERING: 514
SURVEYING: 6791

SERVICES PROVIDED:
LANDSCAPE ARCHITECTURE
CIVIL ENGINEERING
COASTAL ENGINEERING
ELECTRICAL ENGINEERING
SURVEYING & MAPPING
COST ESTIMATING

CONCEPTUAL DESIGNER:
WEST 8
333 HUDSON STREET
SUITE 905
NEW YORK CITY, NY 10013

ARCHITECTURAL CONSULTANT:
SYNALOVSKI ROMANIK SAYE, LLC
1800 ELLER DRIVE
SUITE 500
FORT LAUDERDALE, FL 33316
FIRM LICENSE: AA26001863

GEOTECHNICAL CONSULTANT:
NUTTING ENGINEERS OF FLORIDA, INC.
2051 NW 112TH AVENUE
SUITE 120
MIAMI, FL 33176
CERTIFICATE OF AUTHORIZATION: XXXX

NORTH SHORE OPEN SPACE PARK

BETWEEN 79TH AND 87TH STREETS,
EAST OF COLLINS AVENUE

SEAL:

REVISIONS:
1
2
3
4
5
6
7
8
9
10

SUBMITTAL:
30% SD

SCALE:
NTS

DATE:
NOV 14, 2016

CGA PROJECT NUMBER:

SHEET TITLE:
ILLUSTRATIVE SITE
DIAGRAMS

SHEET NUMBER:

L002