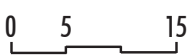


5775 COLLINS AVE

ROOF PLAN ENLARGED EL. 223.0' NGVD

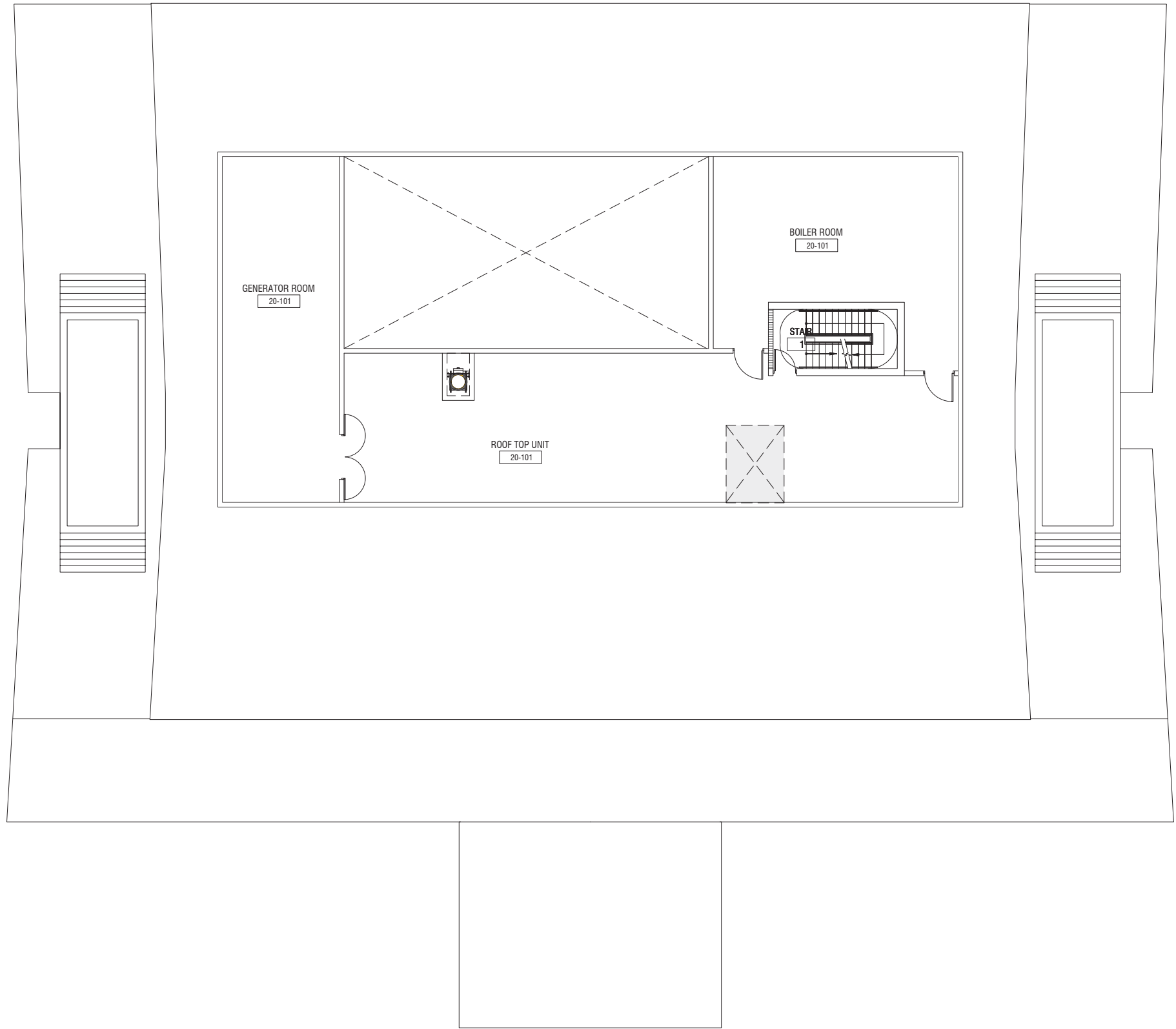
2017.07.17 A1-7A

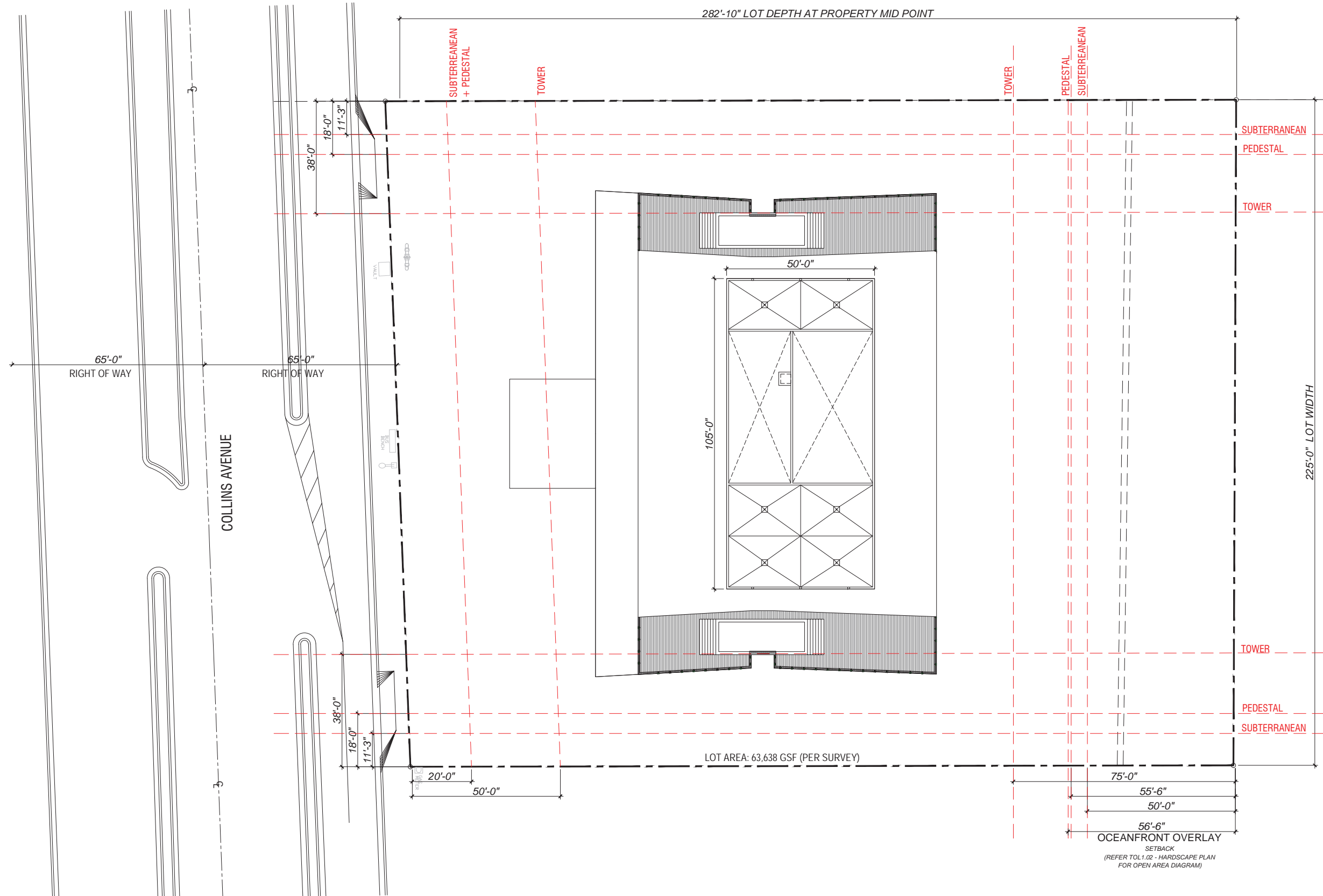
MULTIPLAN



All designs indicated in these drawings are the property of Arquitectonica International Corp. All copyrights reserved 2017. No copies, transmissions, reproductions or electronic manipulation of any portion of these drawings in whole or in part are to be made without the express written permission of Arquitectonica International Corp. The concepts represented in these drawings are subject to review and verification by the city of Miami Beach, as well as other governmental and local agencies having jurisdiction.

ARQUITECTONICA





5775 COLLINS AVE

ROOF PLAN OVERALL EL. 233.0' NGVD

2017.07.17

A1-8A

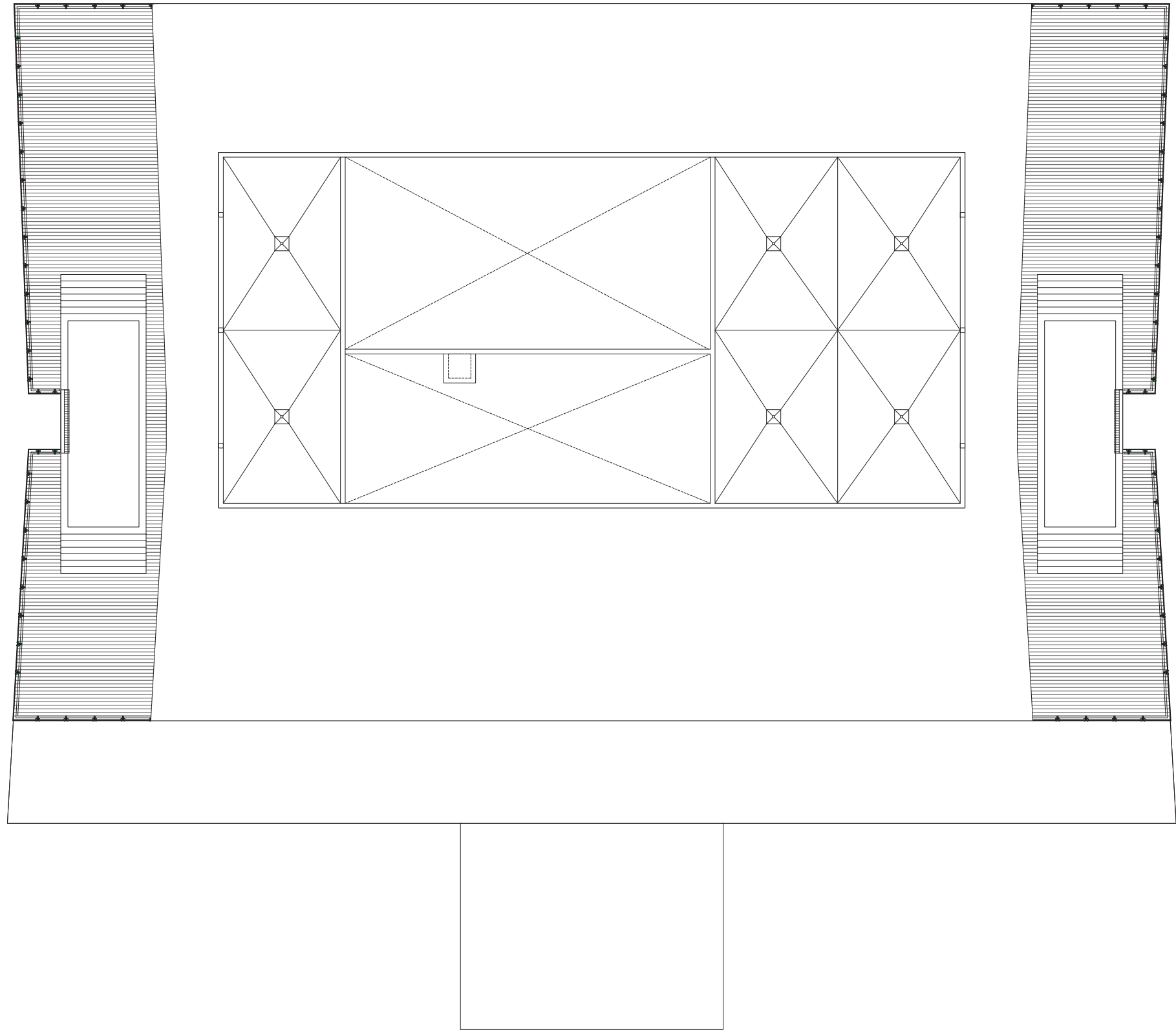
MULTIPLAN

0 5 15



All designs indicated in these drawings are the property of Arquitectonica International Corp. All copyrights reserved 2017. No copies, transmissions, reproductions or electronic manipulation of any portion of these drawings in whole or in part are to be made without the express written permission of Arquitectonica International Corp. The concepts represented in these drawings are subject to review and verification by the city of Miami Beach, as well as other governmental and local agencies having jurisdiction.

ARQUITECTONICA

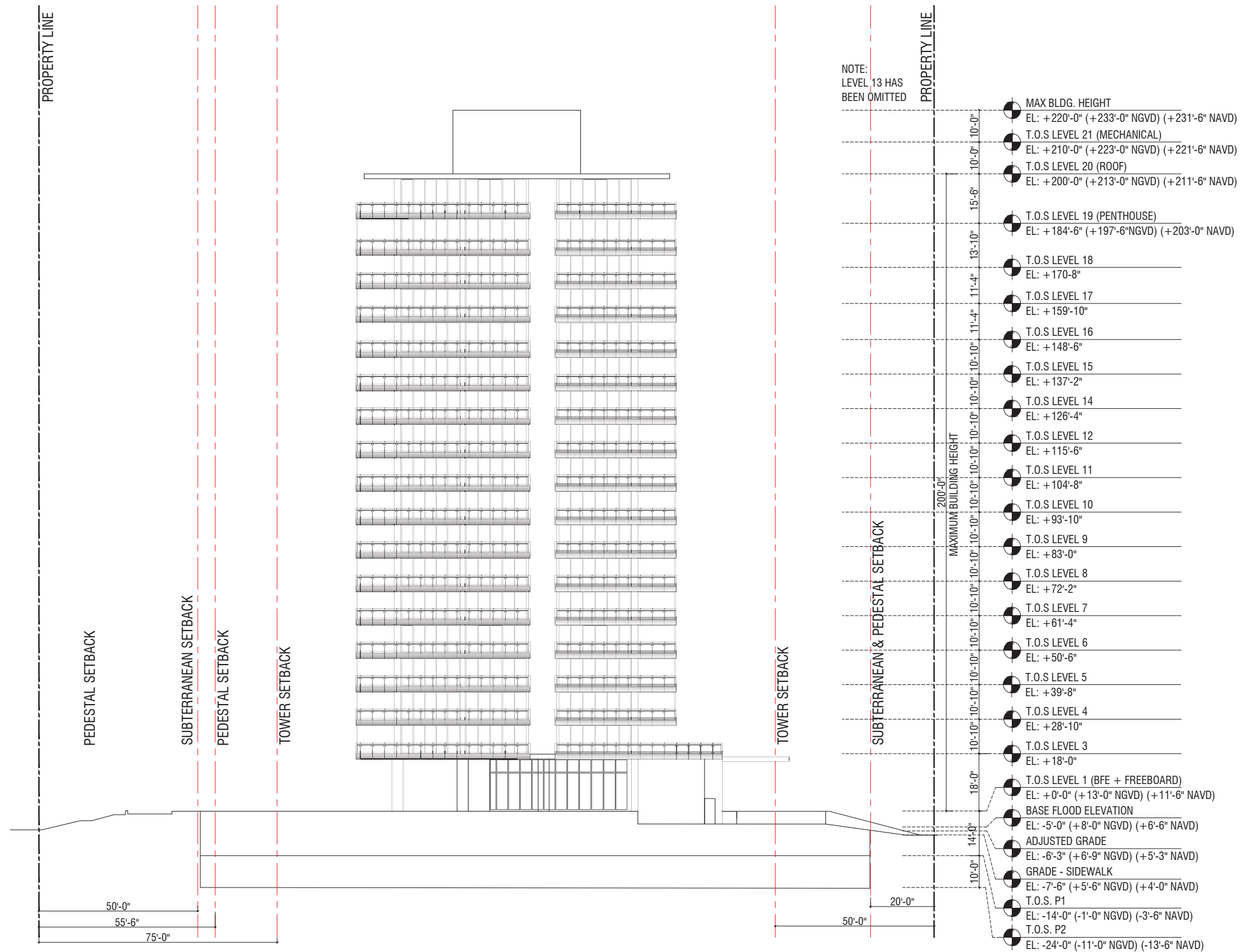




5775 COLLINS AVE

RENDERED NORTH ELEVATION

2017.07.17 A2-00



5775 COLLINS AVE

NORTH ELEVATION

2017.07.17 A2-00A

MULTIPLAN

All designs indicated in these drawings are the property of Arquitectonica International Corp. All copyrights reserved 2017. No copies, transmissions, reproductions or electronic manipulation of any portion of these drawings in whole or in part are to be made without the express written permission of Arquitectonica International Corp. The concepts represented in these drawings are subject to review and verification by the city of Miami Beach, as well as other governmental and local agencies having jurisdiction.

ARQUITECTONICA



5775 COLLINS AVE

RENDERED SOUTH ELEVATION

2017.07.17 A2-01



5775 COLLINS AVE

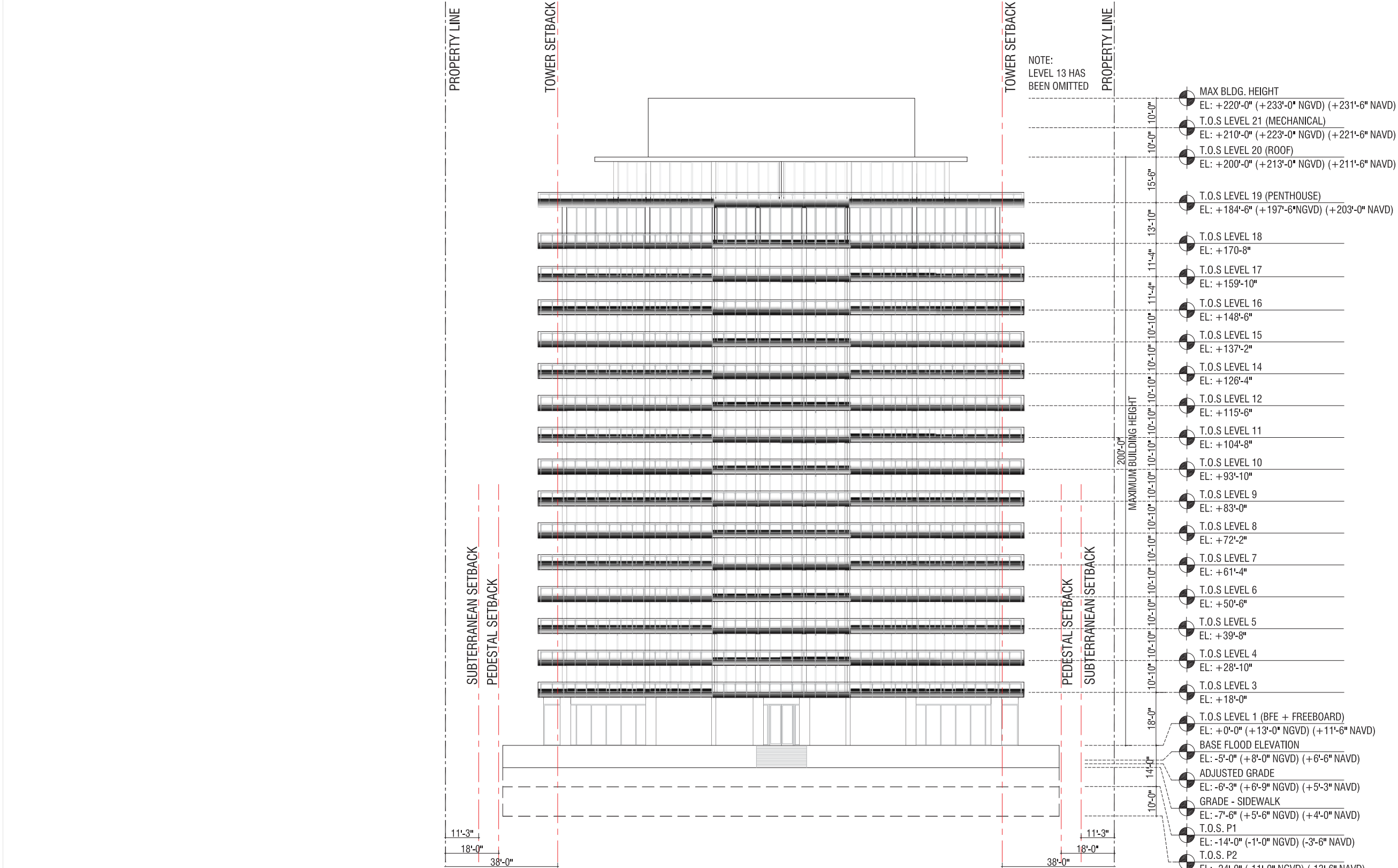
RENDERED EAST ELEVATION

2017.07.17 A2-02

MULTIPLAN

All designs indicated in these drawings are the property of Arquitectonica International Corp. All copyrights reserved 2017. No copies, transmissions, reproductions or electronic manipulation of any portion of these drawings in whole or in part are to be made without the express written permission of Arquitectonica International Corp. The concepts represented in these drawings are subject to review and verification by the city of Miami Beach, as well as other governmental and local agencies having jurisdiction.

ARQUITECTONICA



5775 COLLINS AVE

EAST ELEVATION

2017.07.17 A2-02A



5775 COLLINS AVE

RENDERED WEST ELEVATION

2017.07.17 A2-03

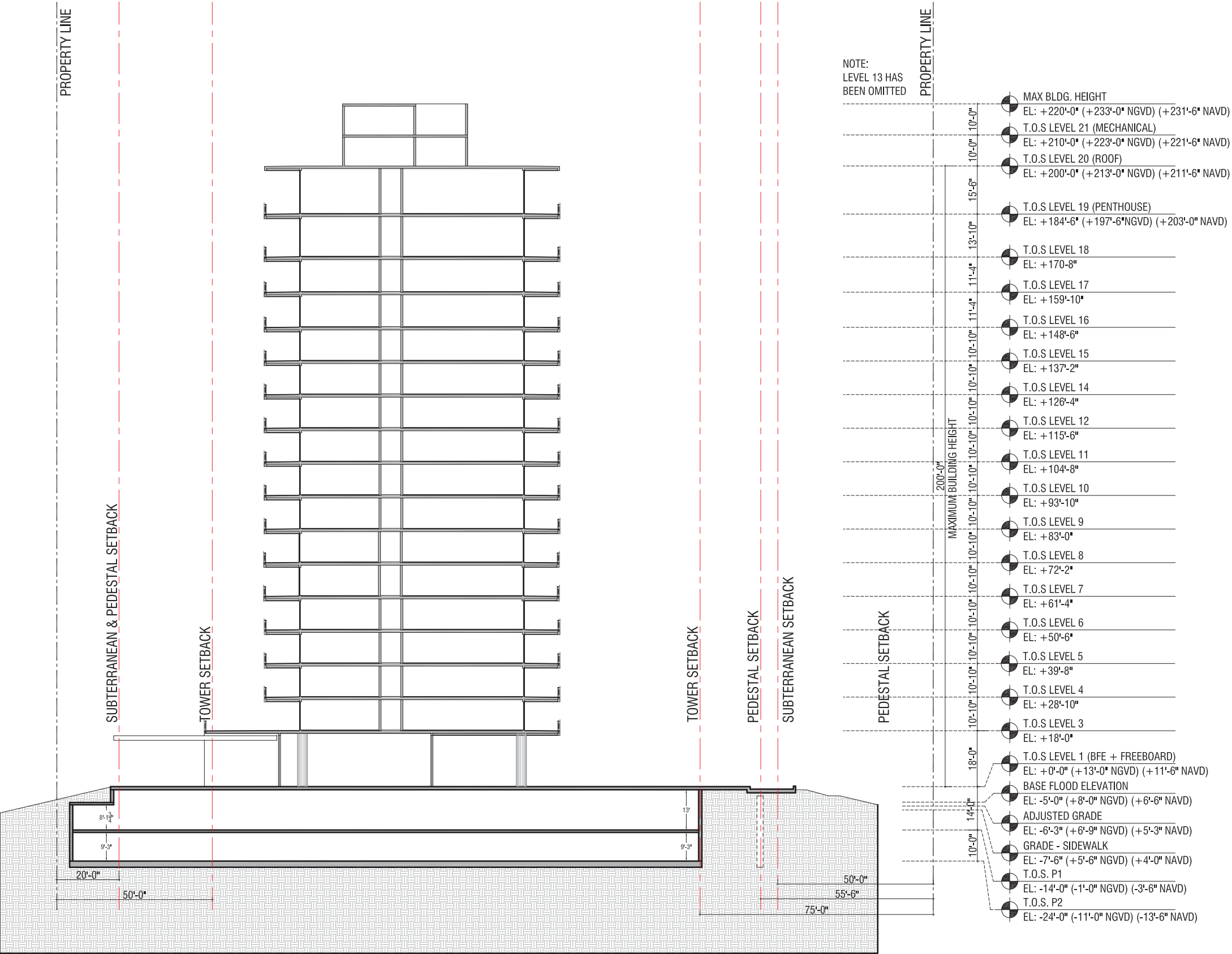
MULTIPLAN

All designs indicated in these drawings are the property of Arquitectonica International Corp. All copyrights reserved 2017. No copies, transmissions, reproductions or electronic manipulation of any portion of these drawings in whole or in part are to be made without the express written permission of Arquitectonica International Corp. The concepts represented in these drawings are subject to review and verification by the city of Miami Beach, as well as other governmental and local agencies having jurisdiction.

ARQUITECTONICA



- 1 - Metal Entrance Canopy
- 2 - Smooth Painted Stucco
- 3 - Lamboo - Engineered Bamboo
- 4 - Aluminum Metal Glass Frame
- 5 - Green Wall
- 6 - Glass Railing

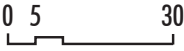


5775 COLLINS AVE

CROSS_SECTION

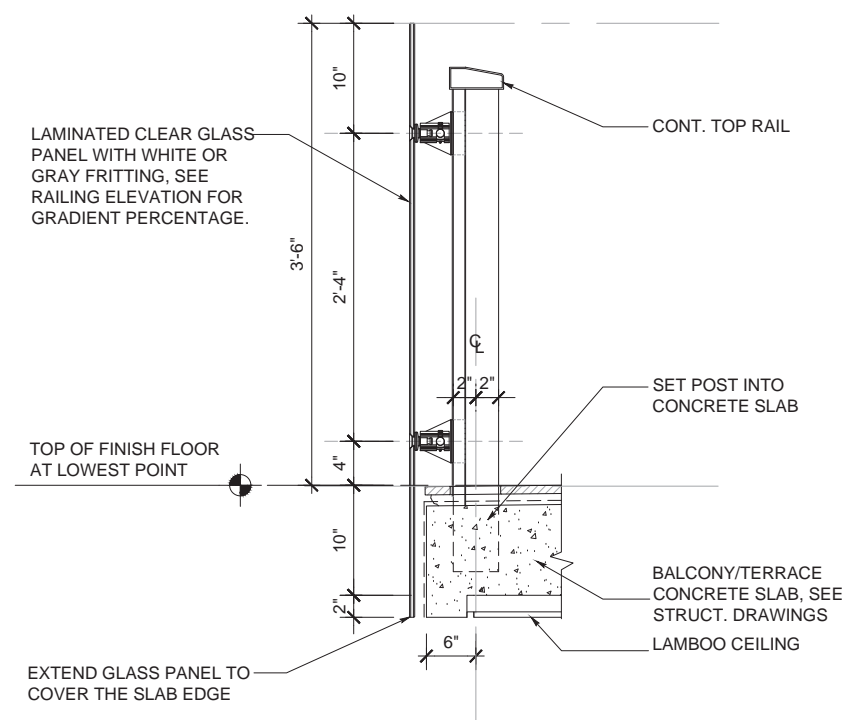
2017.07.17 A3-00

MULTIPLAN

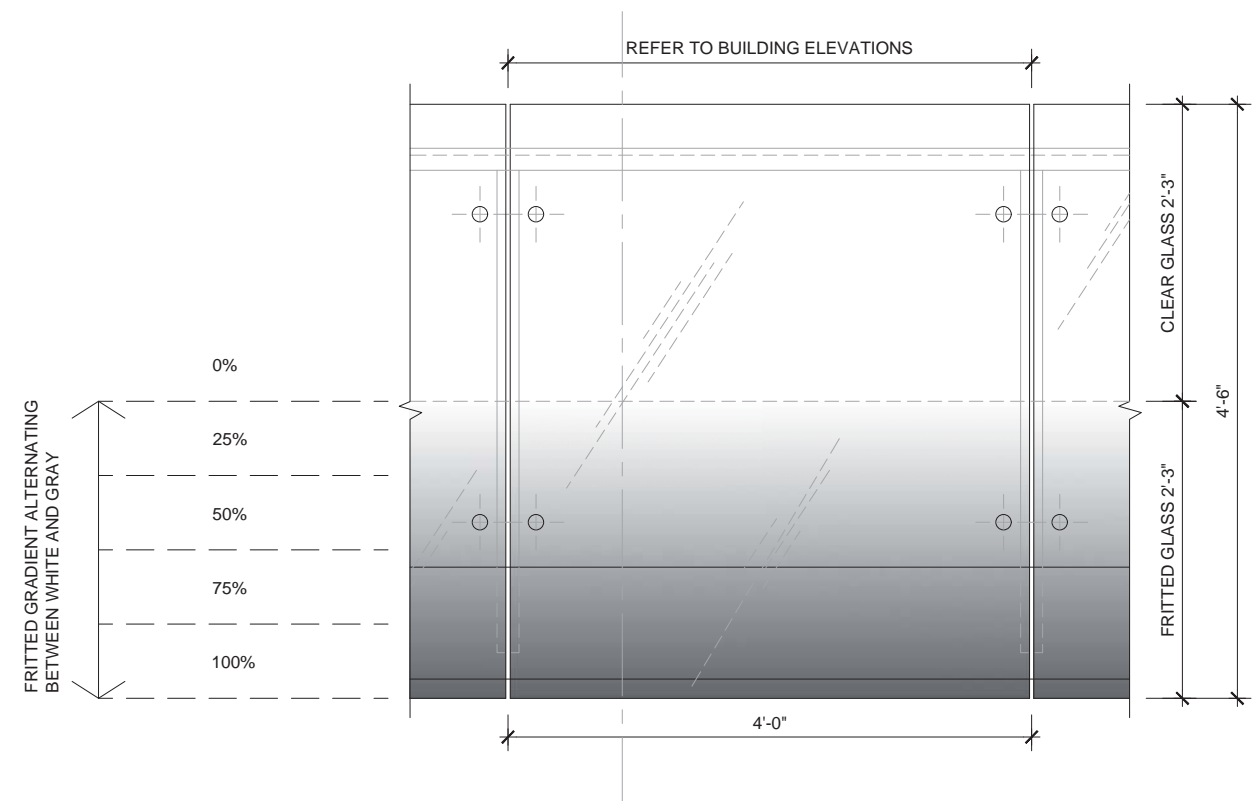


All designs indicated in these drawings are the property of Arquitectonica International Corp. All copyrights reserved 2017. No copies, transmissions, reproductions or electronic manipulation of any portion of these drawings in whole or in part are to be made without the express written permission of Arquitectonica International Corp. The concepts represented in these drawings are subject to review and verification by the city of Miami Beach, as well as other governmental and local agencies having jurisdiction.

ARQUITECTONICA



GLASS RAILING SECTION



PARTIAL GLASS RAILING ELEVATION



5775 COLLINS AVE

COLLINS AVE FACADE

2017.07.17 A4-00

MULTIPLAN

All designs indicated in these drawings are the property of Arquitectonica International Corp. All copyrights reserved 2017. No copies, transmissions, reproductions or electronic manipulation of any portion of these drawings in whole or in part are to be made without the express written permission of Arquitectonica International Corp. The concepts represented in these drawings are subject to review and verification by the city of Miami Beach, as well as other governmental and local agencies having jurisdiction.

ARQUITECTONICA



5775 COLLINS AVE

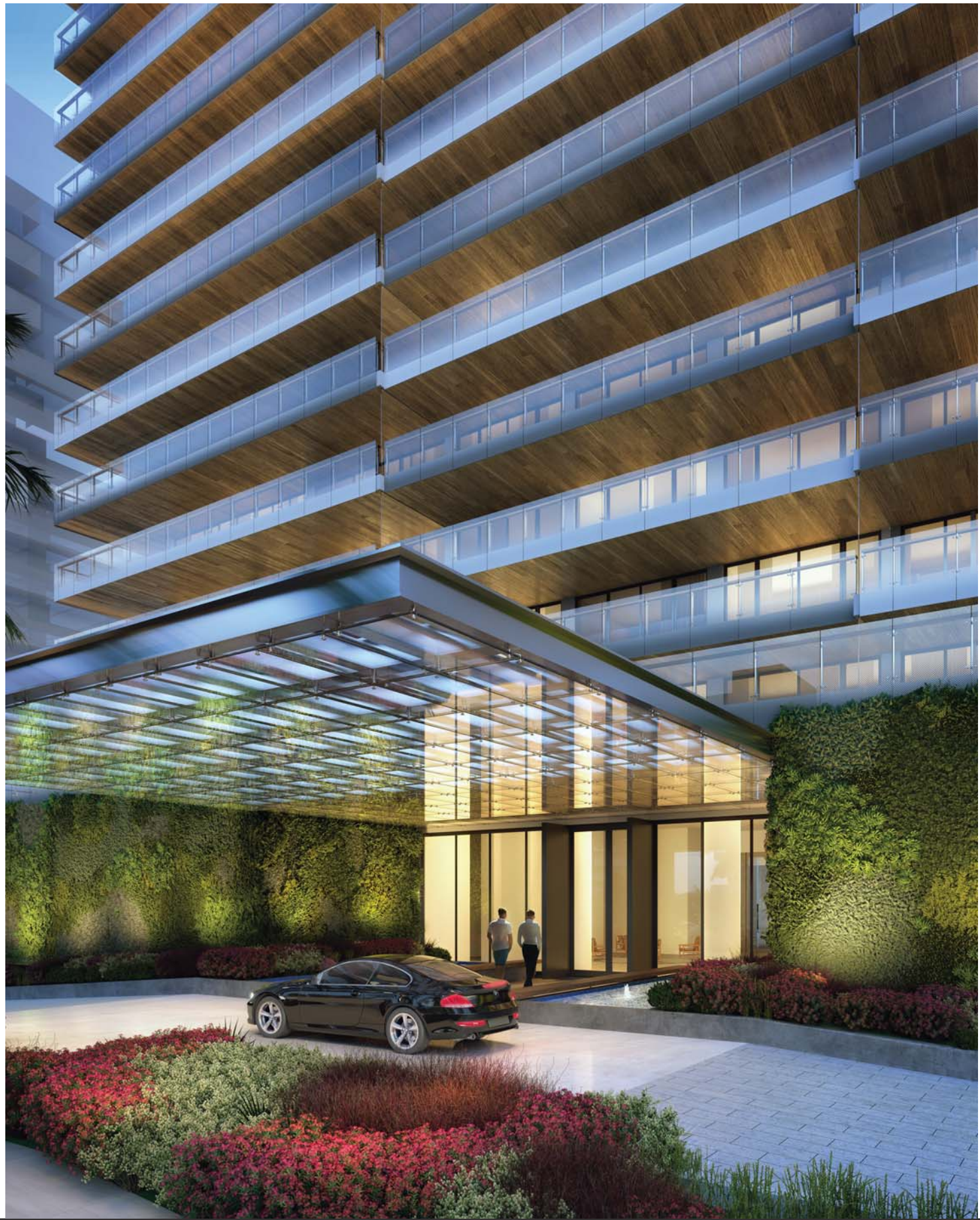
COLLINS AVE FACADE

2017.07.17 A4-01

MULTIPLAN

All designs indicated in these drawings are the property of Arquitectonica International Corp. All copyrights reserved 2017. No copies, transmissions, reproductions or electronic manipulation of any portion of these drawings in whole or in part are to be made without the express written permission of Arquitectonica International Corp. The concepts represented in these drawings are subject to review and verification by the city of Miami Beach, as well as other governmental and local agencies having jurisdiction.

ARQUITECTONICA



5775 COLLINS AVE

COLLINS AVE FACADE

2017.07.17 A4-02

MULTIPLAN

All designs indicated in these drawings are the property of Arquitectonica International Corp. All copyrights reserved 2017. No copies, transmissions, reproductions or electronic manipulation of any portion of these drawings in whole or in part are to be made without the express written permission of Arquitectonica International Corp. The concepts represented in these drawings are subject to review and verification by the city of Miami Beach, as well as other governmental and local agencies having jurisdiction.

ARQUITECTONICA



5775 COLLINS AVE

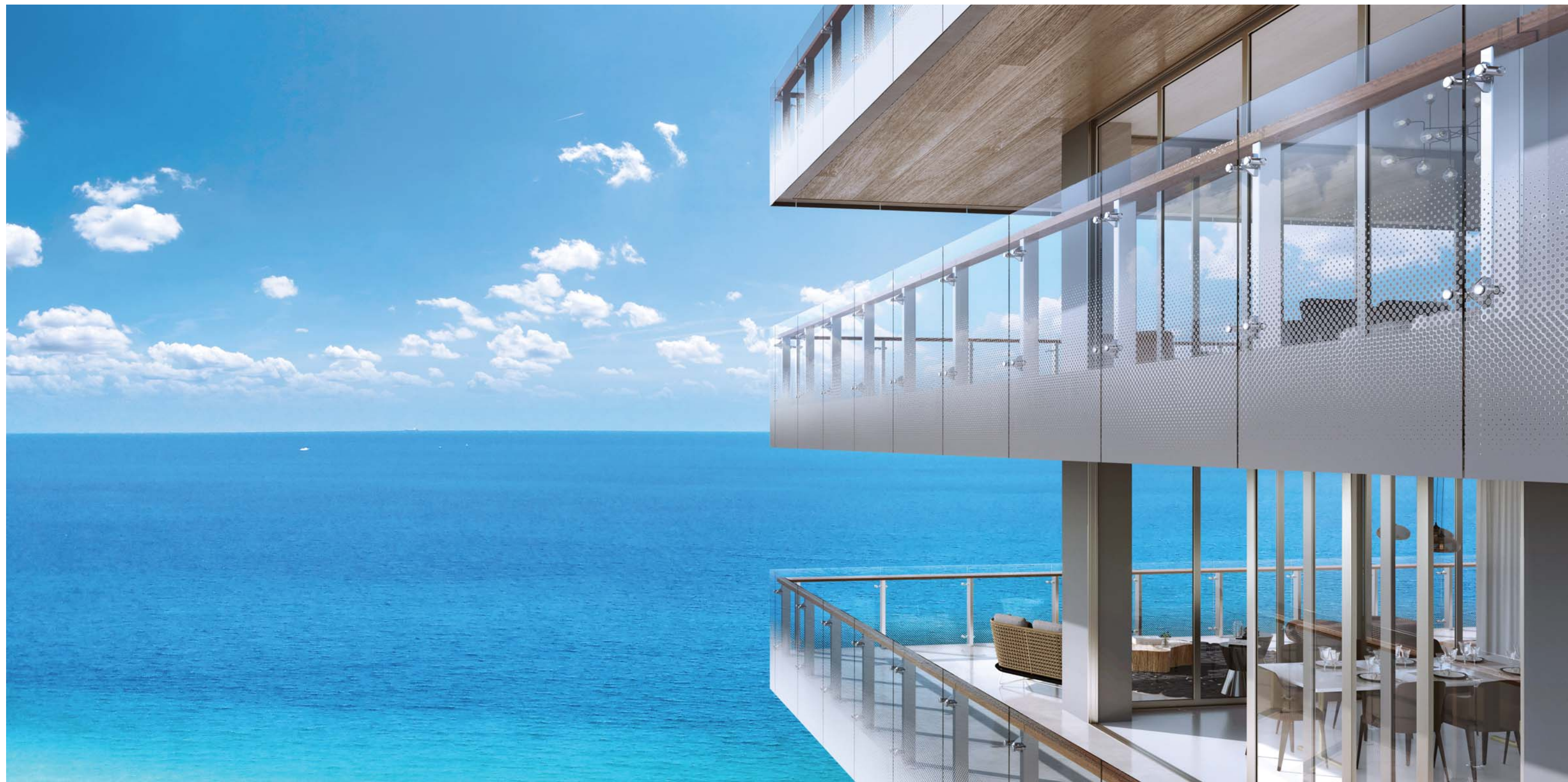
UNIT BALCONY_ENLARGED

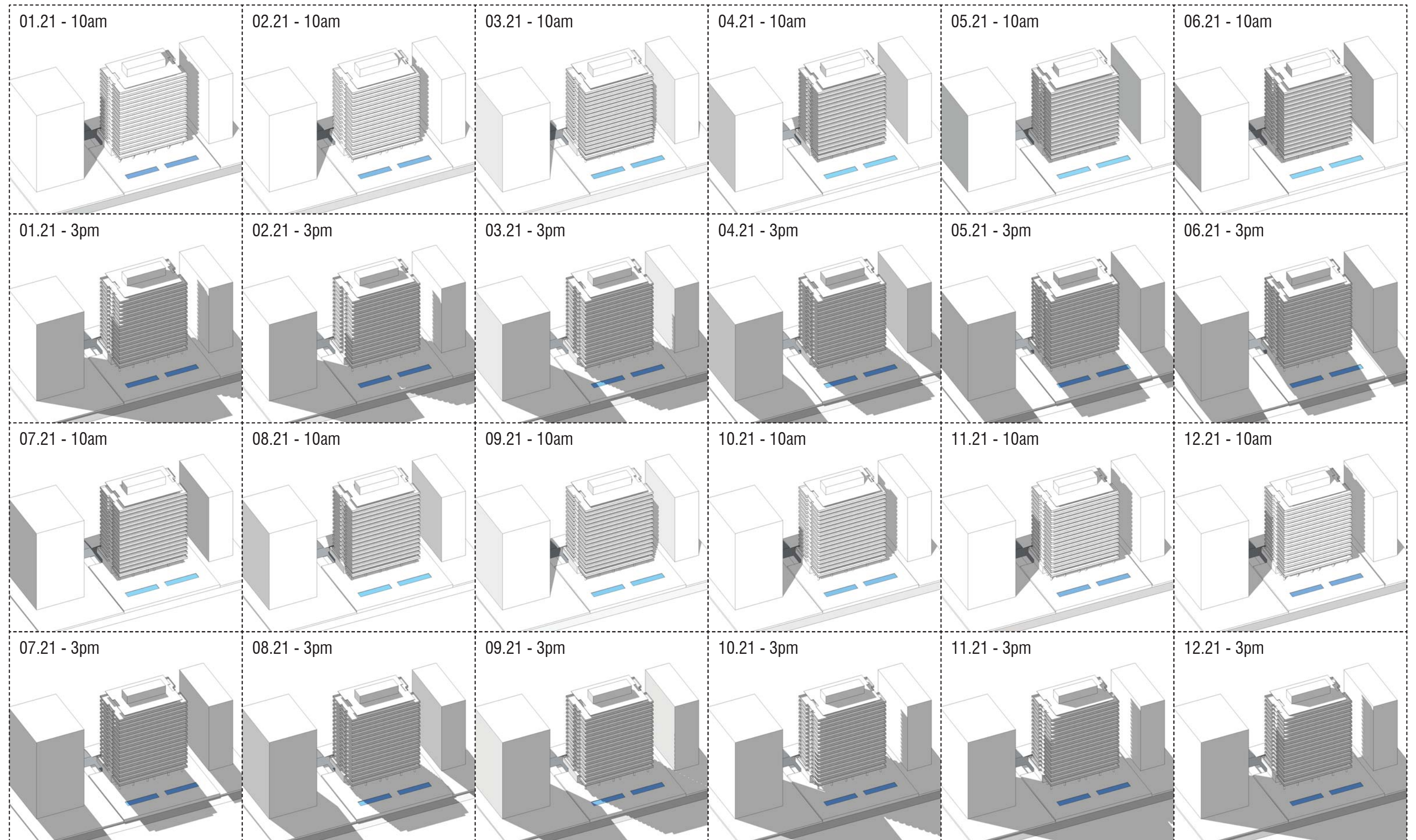
2017.07.17 A4-03

MULTIPLAN

All designs indicated in these drawings are the property of Arquitectonica International Corp. All copyrights reserved 2017. No copies, transmissions, reproductions or electronic manipulation of any portion of these drawings in whole or in part are to be made without the express written permission of Arquitectonica International Corp. The concepts represented in these drawings are subject to review and verification by the city of Miami Beach, as well as other governmental and local agencies having jurisdiction.

ARQUITECTONICA





5775 COLLINS AVE

SUN STUDY_DIAGRMAS

2017.07.17

A5-00