

EXISTING ROLL DOWN
AND VENT

1/16" = 1'

ARQUITECTONICA

2900 Oak Avenue, Miami, FL 33133

T 305.372.1812 F 305.372.1175

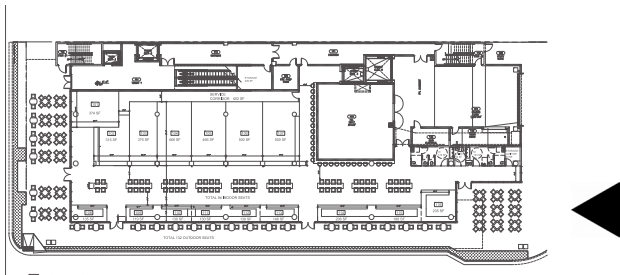
www.arquitectonica.com

AAC000465

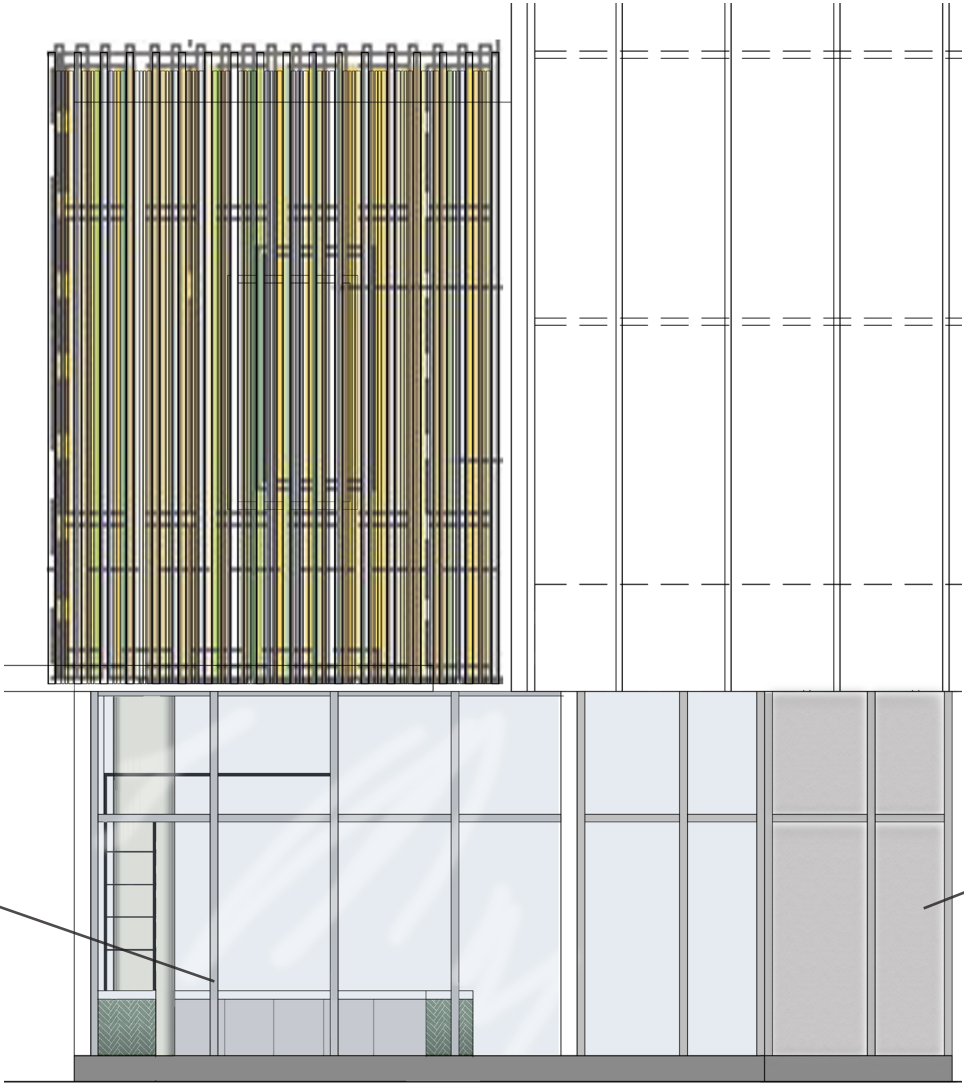
LINCOLN EATERY
723 LINCOLN LANE N

No copies, transmissions, reproductions, or electronic manipulation of any portion of these drawings in whole or in part are to be made without the express written permission of Arquitectonica International. All designs indicated in these drawings are property of Arquitectonica International. All copyrights reserved (c) 2016

A-2.02.1- PROPOSED EAST ELEVATION
EXTERIOR



EXISTING STRUCTURALLY
BUTT GLAZING



OPAQUE FILM TO BE
ADDED TO EXISTING GLAZING

ARQUITECTONICA

2900 Oak Avenue, Miami, FL 33133
T 305.372.1812 F 305.372.1175
www.arquitectonica.com
AAC000465

LINCOLN EATERY
723 LINCOLN LANE N

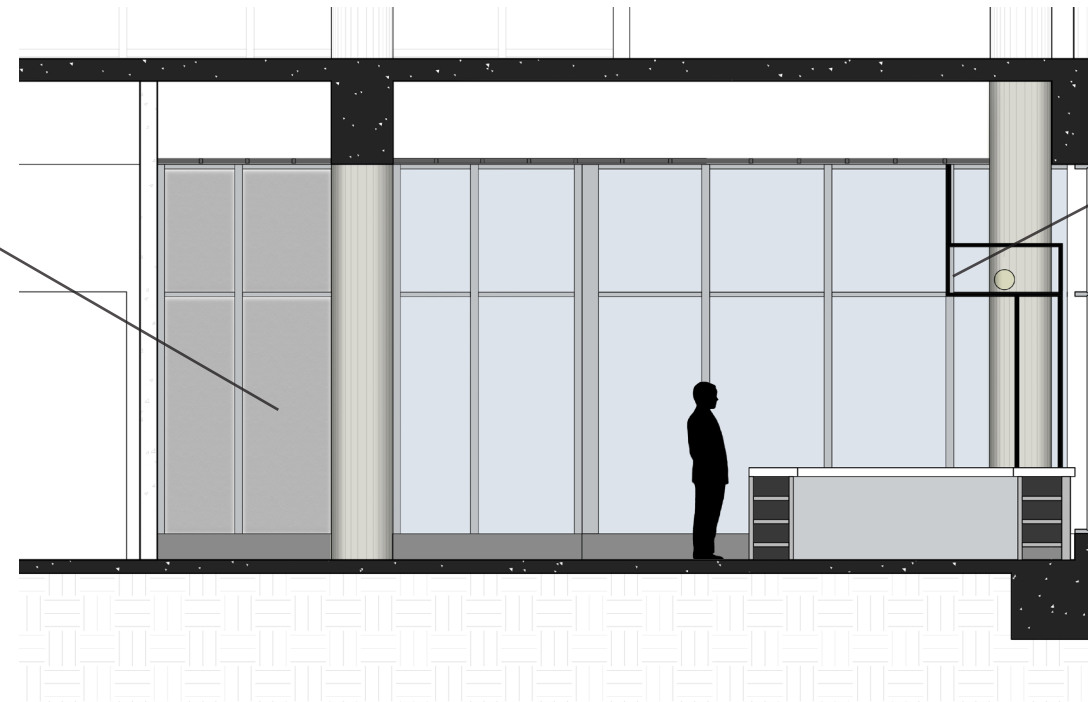
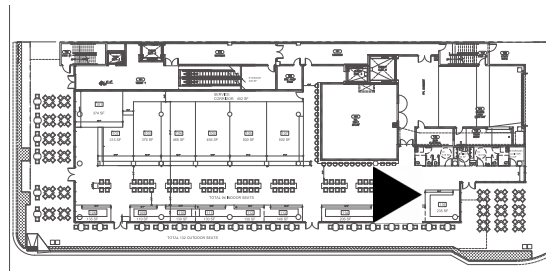
1/8" = 1'

No copies, transmissions, reproductions, or electronic manipulation of any portion of these drawings in whole or in part are to be made without the express written permission of Arquitectonica International. All designs indicated in these drawings are property of Arquitectonica International. All copyrights reserved (c) 2016

A-2.02.2- PROPOSED EAST ELEVATION
EXTERIOR

OPAQUE FILM TO BE
ADDED TO EXISTING GLAZING
AT INTERIOR OF JANITORIAL CLOSET

INDIVIDUAL TENANT SIGNAGE TO
BACKED TO BE BLOCKED TO OBSCURE
VIEW FROM LINCOLN LANE



ARQUITECTONICA

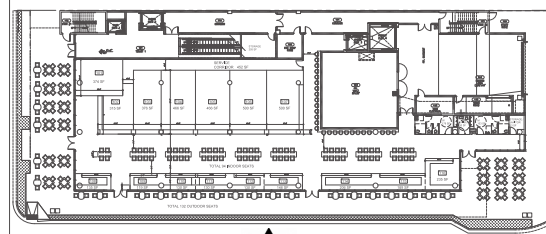
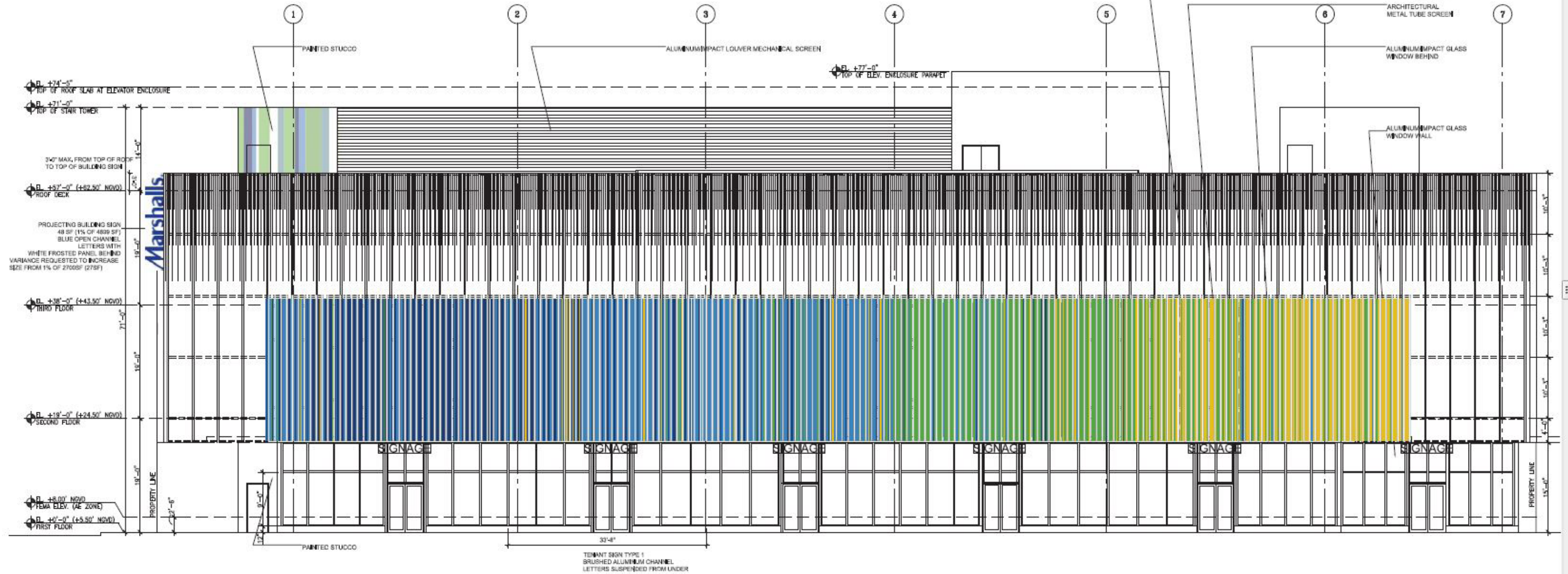
2900 Oak Avenue, Miami, FL 33133
T 305.372.1812 F 305.372.1175
www.arquitectonica.com
AAC000465

LINCOLN EATERY
723 LINCOLN LANE N

1/8" = 1'

No copies, transmissions, reproductions, or electronic manipulation of any portion of these drawings in whole or in part are to be made without the express written permission of Arquitectonica International. All designs indicated in these drawings are property of Arquitectonica International. All copyrights reserved (c) 2016

**A-2.03- PROPOSED EAST ELEVATION
INTERIOR**



1/16" = 1'

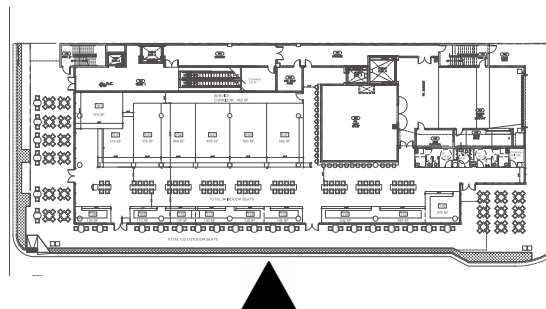
ARQUITECTONICA

2900 Oak Avenue, Miami, FL 33133
T 305.372.1812 F 305.372.1175
www.arquitectonica.com
AAC000465

LINCOLN EATERY
723 LINCOLN LANE N

No copies, transmissions, reproductions, or electronic manipulation of any portion of these drawings in whole or in part are to be made without the express written permission of Arquitectonica International. All designs indicated in these drawings are property of Arquitectonica International. All copyrights reserved (c) 2016

A-2.04.1- SOUTH ELEVATION
DRB APPROVED



EXISTING DOORS BEING REMOVED AND REPLACED WITH
A FIXED PANEL OF GLAZING TO MATCH EXISTING GLAZING SYSTEM

1/16" = 1'

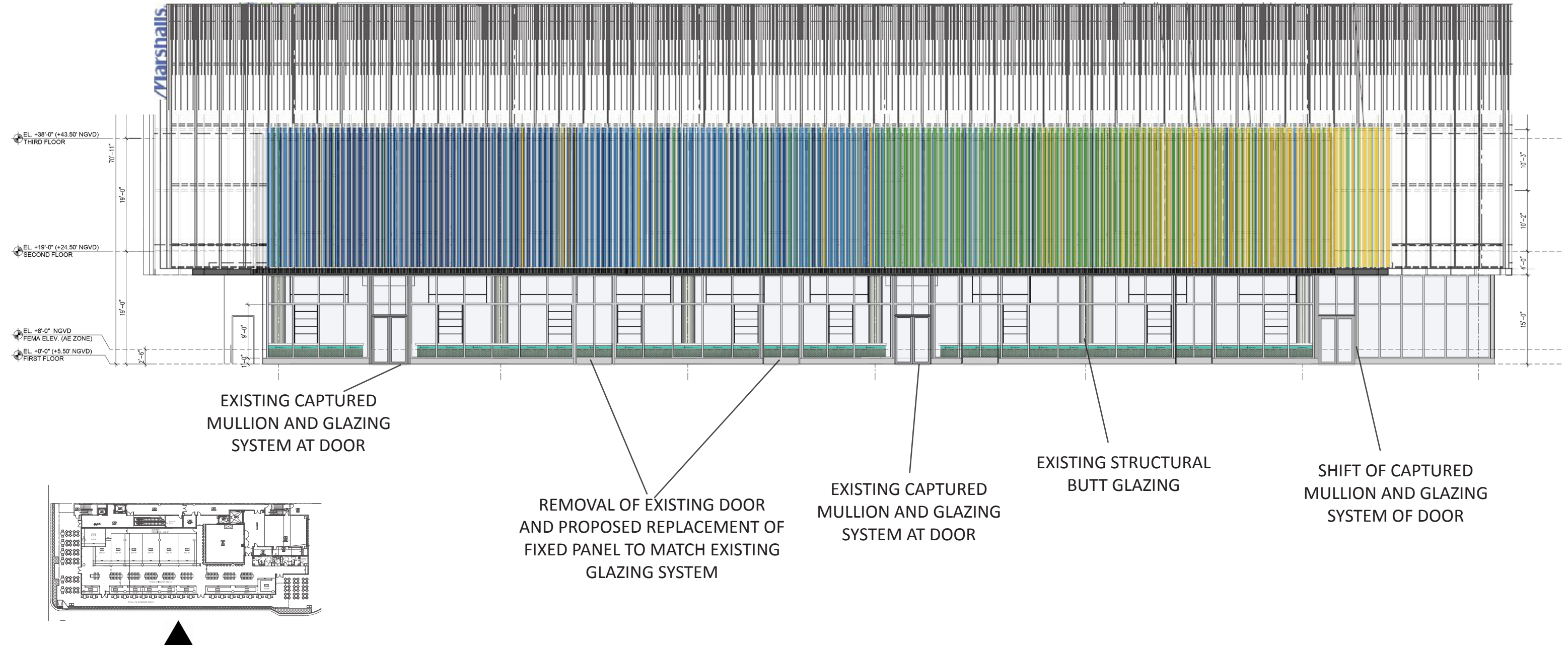
ARQUITECTONICA

2900 Oak Avenue, Miami, FL 33133
T 305.372.1812 F 305.372.1175
www.arquitectonica.com
AAC000465

LINCOLN EATERY
723 LINCOLN LANE N

No copies, transmissions, reproductions, or electronic manipulation of any portion of these drawings in whole or in part are to be made without the express written permission of Arquitectonica International. All designs indicated in these drawings are property of Arquitectonica International. All copyrights reserved (c) 2016

A-2.04.2- SOUTH ELEVATION
DRB APPROVED



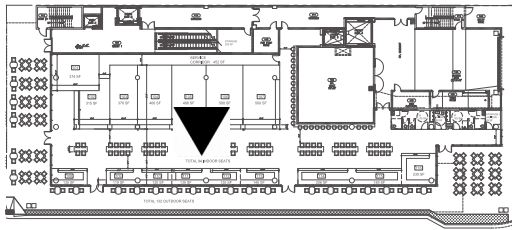
ARQUITECTONICA

2900 Oak Avenue, Miami, FL 33133
 T 305.372.1812 F 305.372.1175
 www.arquitectonica.com
 AAC000465

LINCOLN EATERY
 723 LINCOLN LANE N

No copies, transmissions, reproductions, or electronic manipulation of any portion of these drawings in whole or in part are to be made without the express written permission of Arquitectonica International. All designs indicated in these drawings are property of Arquitectonica International. All copyrights reserved (c) 2016

**A-2.05- PROPOSED SOUTH ELEVATION
 EXTERIOR**



1/16" = 1'

ARQUITECTONICA
 2900 Oak Avenue, Miami, FL 33133
 T 305.372.1812 F 305.372.1175
 www.arquitectonica.com
 AAC000465

LINCOLN EATERY
 723 LINCOLN LANE N

No copies, transmissions, reproductions, or electronic manipulation of any portion of these drawings in whole or in part are to be made without the express written permission of Arquitectonica International. All designs indicated in these drawings are property of Arquitectonica International. All copyrights reserved (c) 2016

A-2.06.1- PROPOSED SOUTH ELEVATION
 INTERIOR

INDIVIDUAL TENANT SIGNAGE TO
BE BACKED TO BLOCK VIEW FROM
LINCOLN LANE



GLASS AND METAL FRAME SHELF REFERENCE

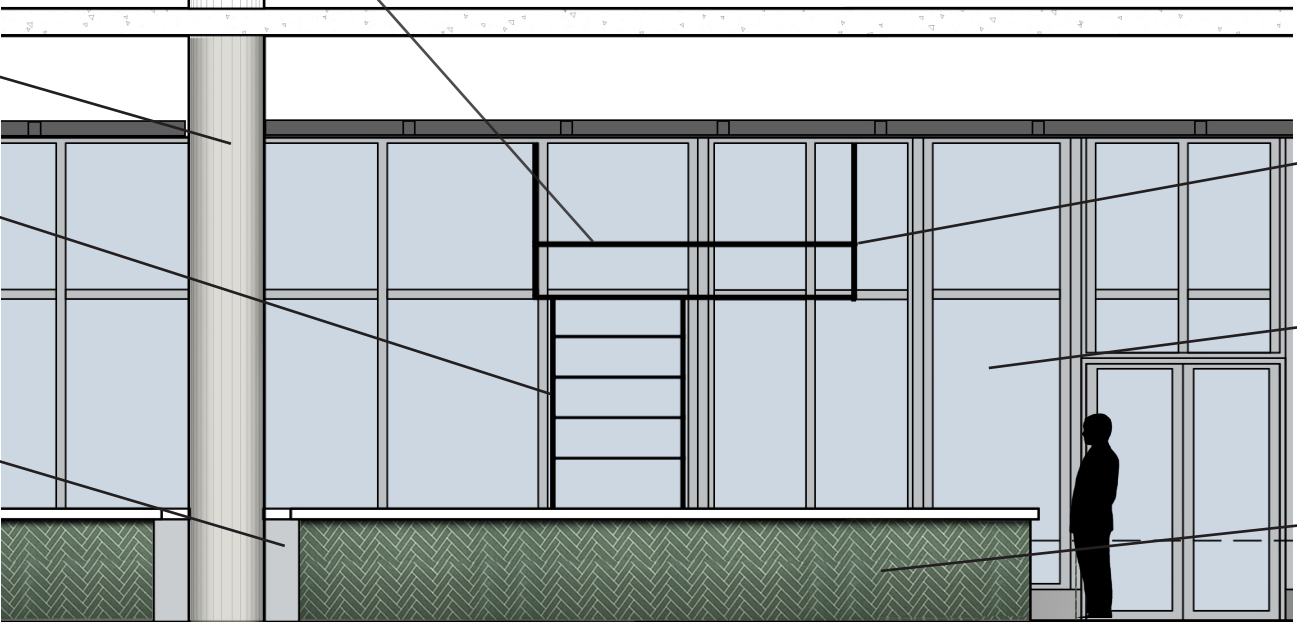


OPEN METAL BOX FRAME REFERENCE

EXISTING COLUMN

2" METAL TUBE FRAME AND GLASS
SHELVING SYSTEM FROM 34" HIGH
BACK COUNTER TO
EXISTING HORIZONTAL MULLION

34" HIGH BACK COUNTER

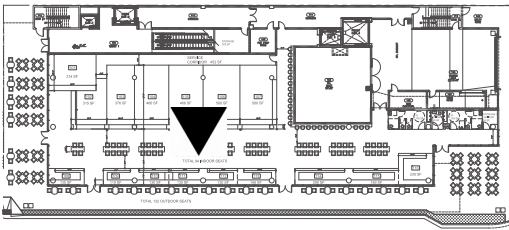


2" METAL TUBE FRAME STRUCTURE FOR TENANT RETROFIT
OF LIGHTING AND SIGNAGE (ONLY FACING INTERIOR)

EXISTING GLAZING WITH EXISTING TINT AND FILM

34" HIGH SUBWAY TILE FINISHED COUNTER

TYPICAL COUNTER BAY



ARQUITECTONICA

2900 Oak Avenue, Miami, FL 33133
T 305.372.1812 F 305.372.1175
www.arquitectonica.com
AAC000465

LINCOLN EATERY
723 LINCOLN LANE N

No copies, transmissions, reproductions, or electronic manipulation of any portion of these drawings in whole or in part are to be made without the express written permission of Arquitectonica International. All designs indicated in these drawings are property of Arquitectonica International. All copyrights reserved (c) 2016

A-2.06.2- PROPOSED SOUTH ELEVATION
INTERIOR

