



**LINCOLN EATERY**  
**723 LINCOLN LANE N**  
INTERIOR DESIGN

Design Review Board  
FINAL SUBMITTAL  
September 05, 2017

SCOPE:  
Submission of DRB approval of interior design to  
constructed existing shell space, new tenant counters  
and shell space, shelving and counters against existing  
glazing , and view of interiors from existing facade.

**PPF MBL Portfolio, LLC**  
**c/o Terranova Corp.**  
801 Arthur Godfrey Rd  
Suite 600  
Miami Beach, FL 33140

**ARQUITECTONICA**  
2900 Oak Avenue, Miami, FL 33133  
T 305.372.1812 F 305.372.1175  
www.arquitectonica.com  
AAC000465

LINCOLN EATERY  
723 LINCOLN LANE N

No copies, transmissions, reproductions, or electronic manipulation of any portion of these drawings in whole or in part are to be made without the express written permission of Arquitectonica International. All designs indicated in these drawings are property of Arquitectonica International. All copyrights reserved (c) 2016





**ARQUITECTONICA**

2900 Oak Avenue, Miami, FL 33133  
T 305.372.1812 F 305.372.1175  
www.arquitectonica.com  
AAC000465

LINCOLN EATERY  
723 LINCOLN LANE N





**ARQUITECTONICA**  
 2900 Oak Avenue, Miami, FL 33133  
 T 305.372.1812 F 305.372.1175  
 www.arquitectonica.com  
 AAC000465

EXISTING WEST/SOUTH FACADE

LINCOLN EATERY  
 723 LINCOLN LANE N

ALL PHOTOS TAKEN  
 JUNE, 7TH 2017

No copies, transmissions, reproductions, or electronic manipulation of any portion of these drawings in whole or in part are to be made without the express written permission of Arquitectonica International. All designs indicated in these drawings are property of Arquitectonica International. All copyrights reserved (c) 2016

G-1.02- EXISTING SITE PHOTOS





**ARQUITECTONICA**

2900 Oak Avenue, Miami, FL 33133  
T 305.372.1812 F 305.372.1175  
www.arquitectonica.com  
AAC000465

EXISTING SOUTH FACADE

LINCOLN EATERY  
723 LINCOLN LANE N

ALL PHOTOS TAKEN  
JUNE, 29TH 2017

No copies, transmissions, reproductions, or electronic manipulation of any portion of these drawings in whole or in part are to be made without the express written permission of Arquitectonica International. All designs indicated in these drawings are property of Arquitectonica International. All copyrights reserved (c) 2016





**ARQUITECTONICA**  
 2900 Oak Avenue, Miami, FL 33133  
 T 305.372.1812 F 305.372.1175  
 www.arquitectonica.com  
 AAC000465

EXISTING EAST FACADE

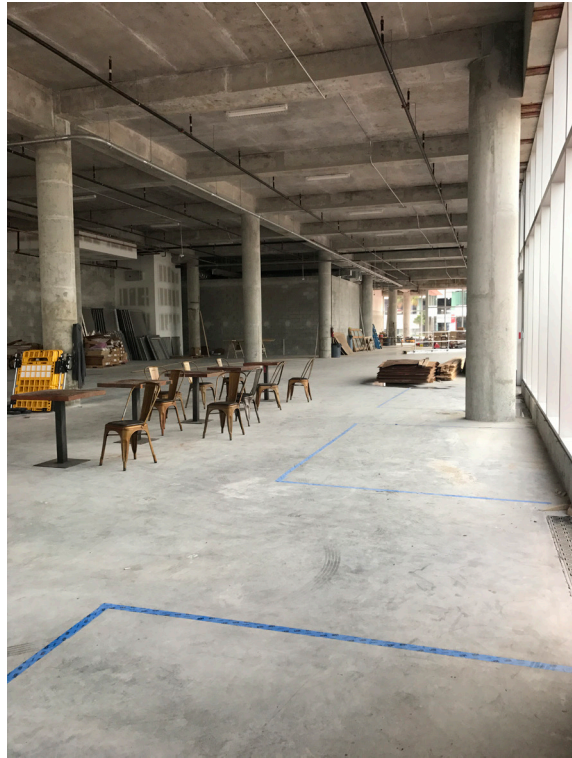
LINCOLN EATERY  
 723 LINCOLN LANE N

ALL PHOTOS TAKEN  
 JUNE, 29TH 2017

No copies, transmissions, reproductions, or electronic manipulation of any portion of these drawings in whole or in part are to be made without the express written permission of Arquitectonica International. All designs indicated in these drawings are property of Arquitectonica International. All copyrights reserved (c) 2016

G-1.04- EXISTING SITE PHOTOS





## EXISTING SHELL SPACE

LINCOLN EATERY  
723 LINCOLN LANE N

ALL PHOTOS TAKEN  
JUNE, 7TH 2017

**ARQUITECTONICA**

2900 Oak Avenue, Miami, FL 33133  
T 305.372.1812 F 305.372.1175  
www.arquitectonica.com  
AAC000465

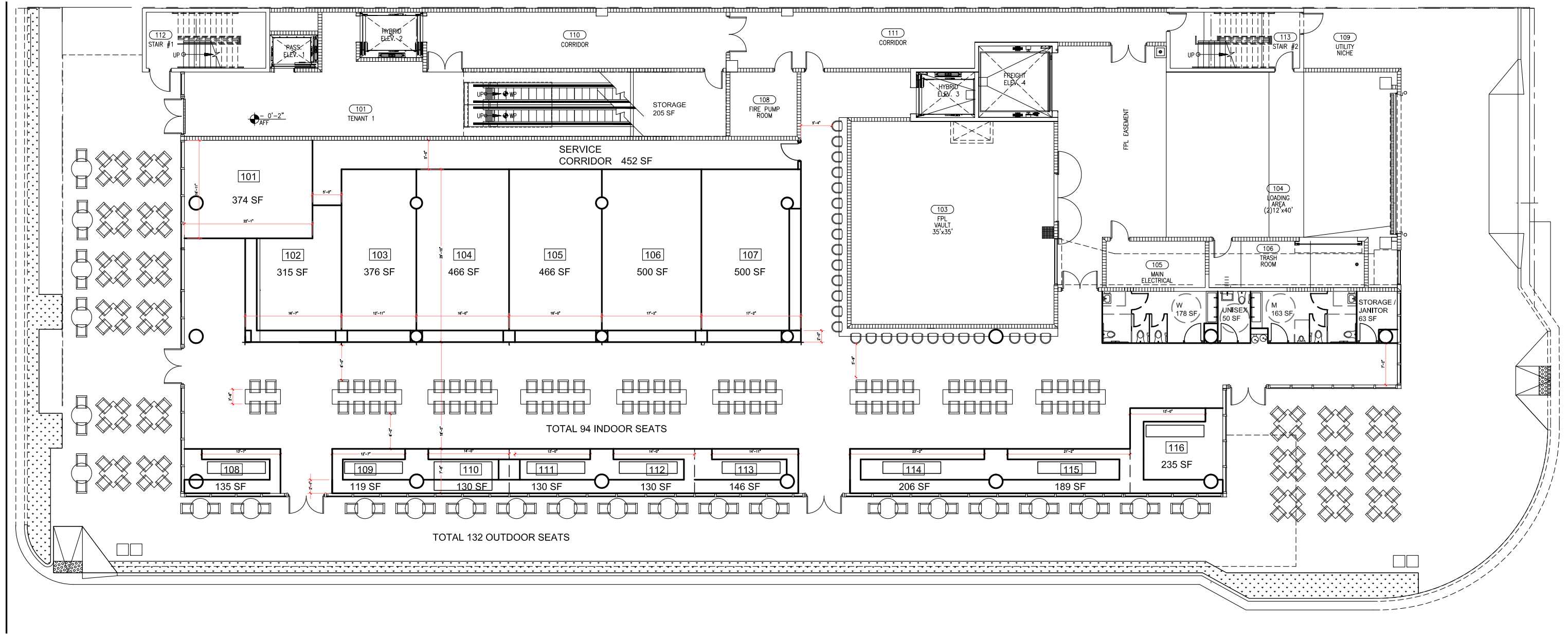
No copies, transmissions, reproductions, or electronic manipulation of any portion of these drawings in whole or in part are to be made without the express written permission of Arquitectonica International. All designs indicated in these drawings are property of Arquitectonica International. All copyrights reserved (c) 2016

G-1.05- EXISTING SITE PHOTOS

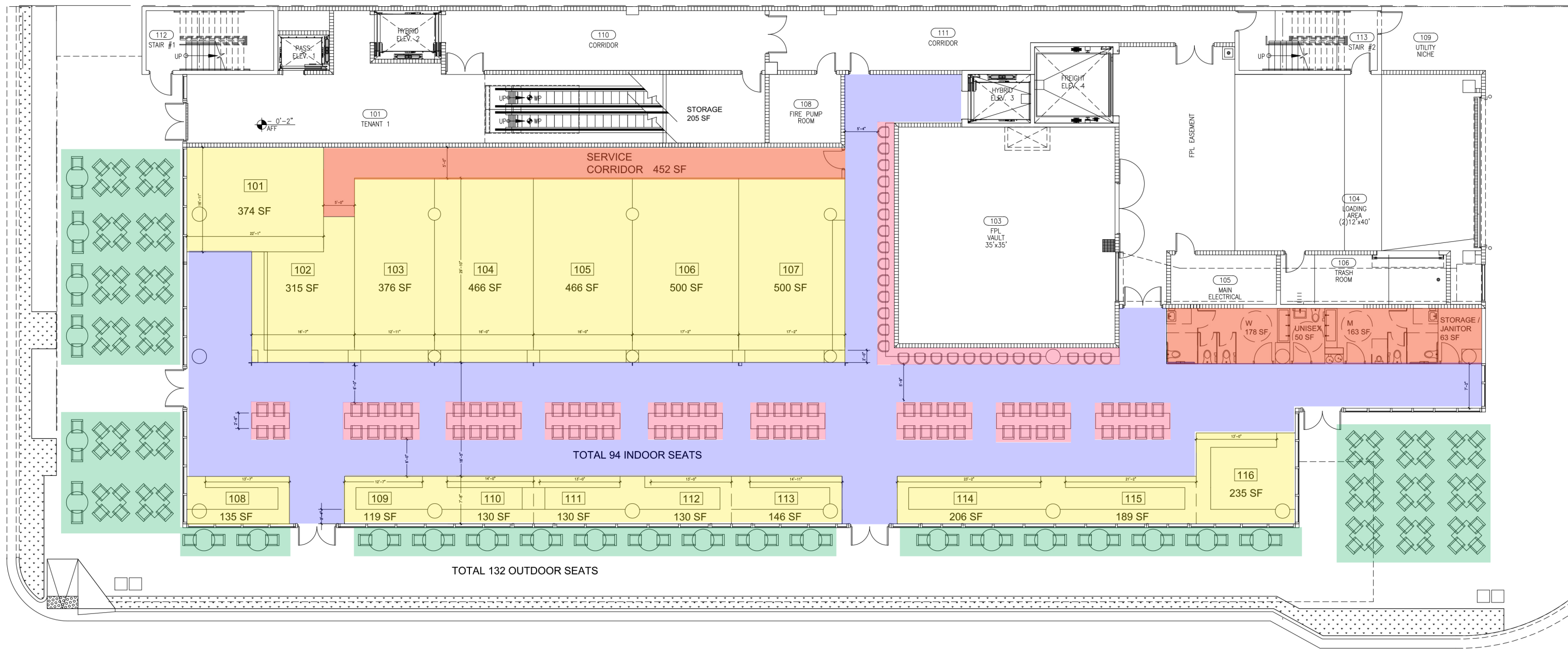












- TENANT** : 4,419 SF
- CIRCULATION**: 3,263 SF
- SEATING**: 1061 SF
- SERVICE**: 906 SF
- TOTAL** : 9,650 SF
- OUTDOOR SEATING**: 2,250 SF

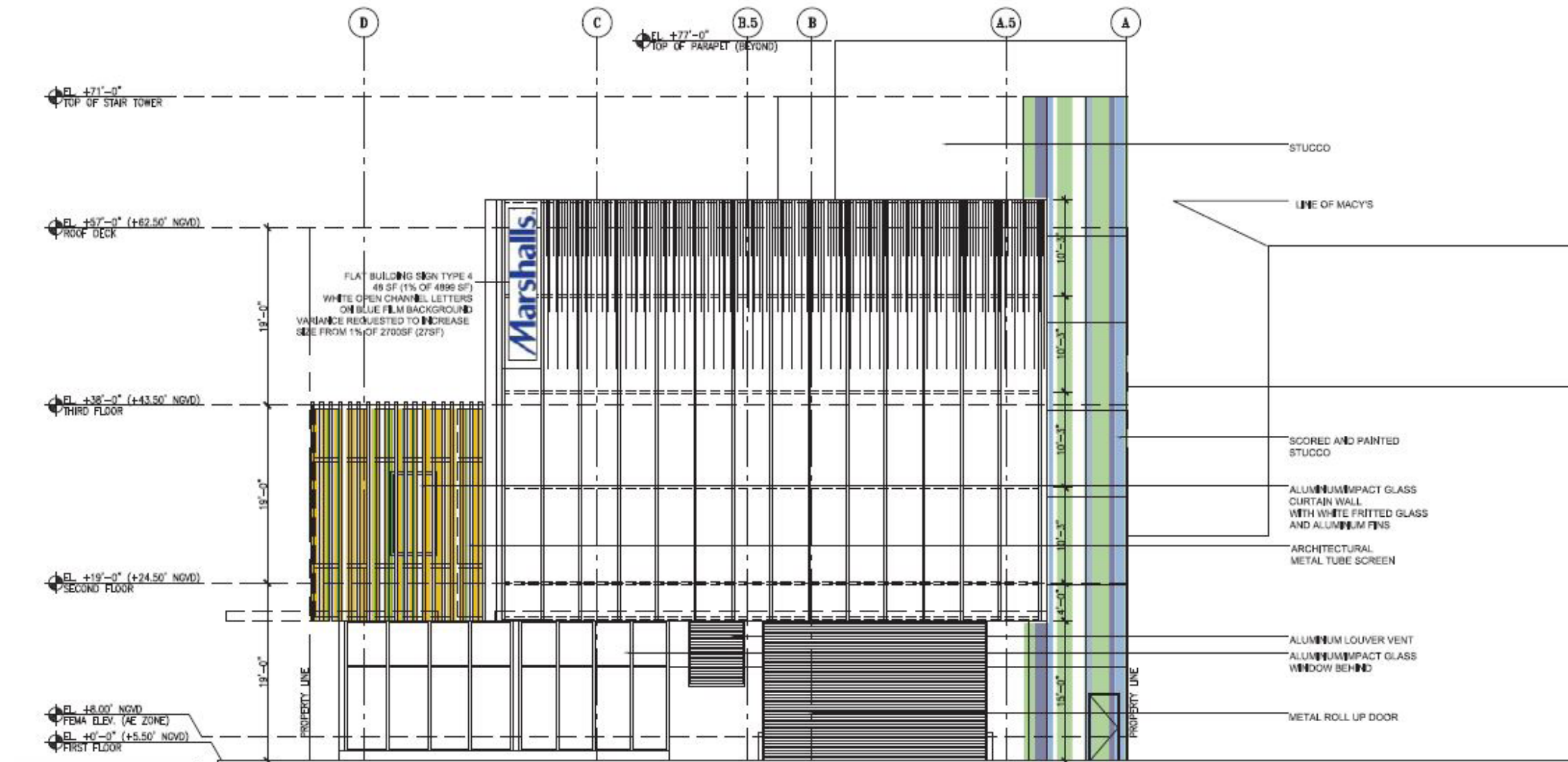
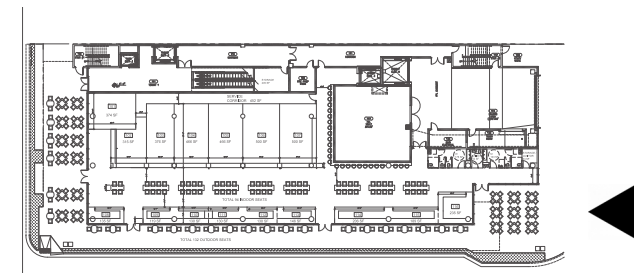
**ARQUITECTONICA**  
 2900 Oak Avenue, Miami, FL 33133  
 T 305.372.1812 F 305.372.1175  
 www.arquitectonica.com  
 AAC000465

LINCOLN EATERY  
 723 LINCOLN LANE N

No copies, transmissions, reproductions, or electronic manipulation of any portion of these drawings in whole or in part are to be made without the express written permission of Arquitectonica International. All designs indicated in these drawings are property of Arquitectonica International. All copyrights reserved (c) 2016

A-1.03- GROUND FLOOR PLAN





1/16" = 1'

**ARQUITECTONICA**  
 2900 Oak Avenue, Miami, FL 33133  
 T 305.372.1812 F 305.372.1175  
 www.arquitectonica.com  
 AAC000465

LINCOLN EATERY  
 723 LINCOLN LANE N

No copies, transmissions, reproductions, or electronic manipulation of any portion of these drawings in whole or in part are to be made without the express written permission of Arquitectonica International. All designs indicated in these drawings are property of Arquitectonica International. All copyrights reserved (c) 2016

**A-2.01- EAST ELEVATION**  
**DRB APPROVED**