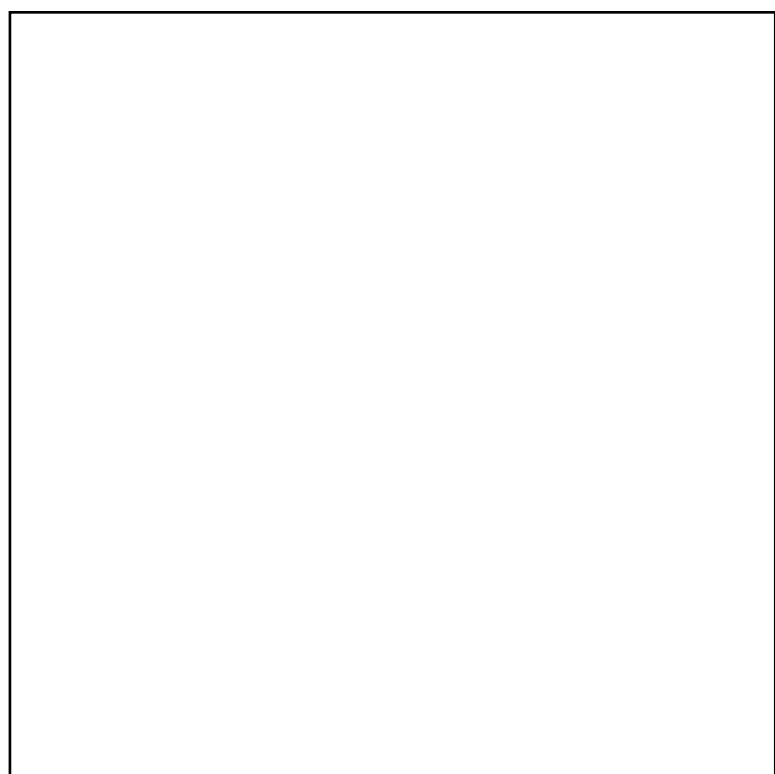
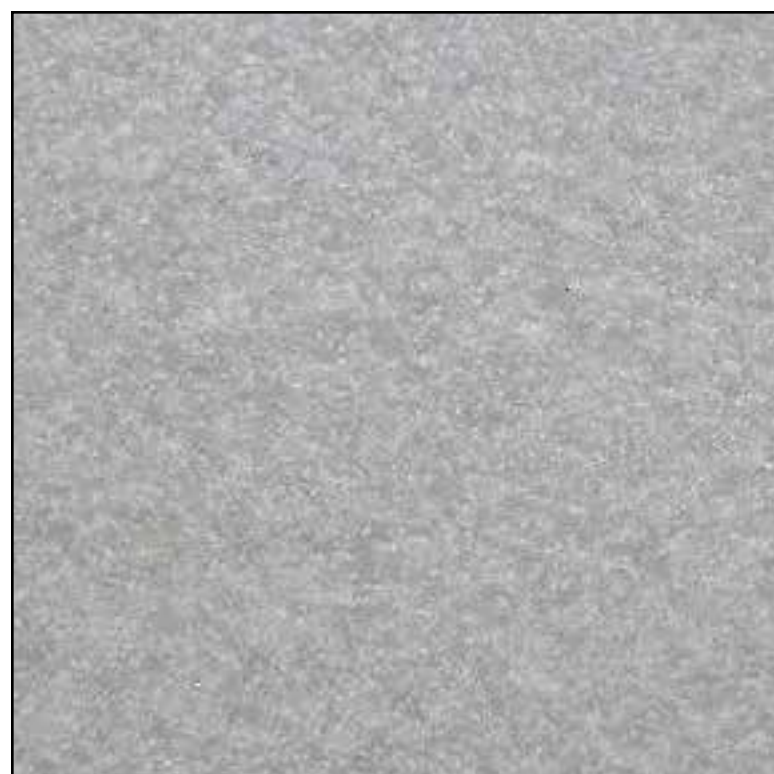


1



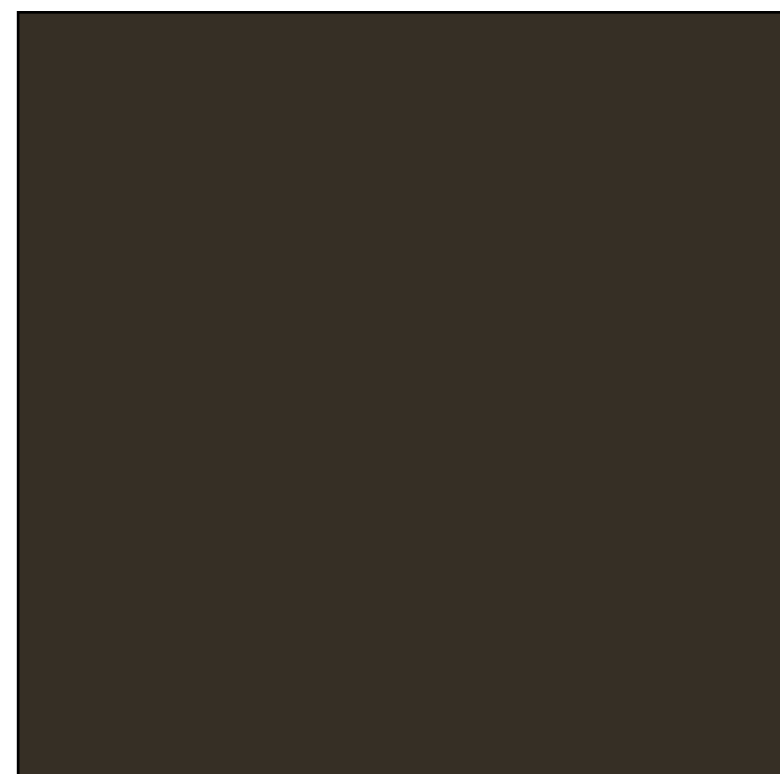
2



3



4



5

	DESCRIPTION	SPECIFICATION
1	Exterior Paint	White Dove
2	Glazing	Clear Low-E Glass
3	Decking	Limestone Decking
4	Stone Finish	Vena Grigio Stone
5	Mullion Coating	Statuary Bronze



NEW RESIDENCE | 421 EAST SAN MARINO | MIAMI BEACH, FLORIDA

CLIENT / PROPERTY INFORMATION

PROPERTY ADDRESS
421 EAST SAN MARINO
MIAMI BEACH, FL 33140

EXISTING VEGETATION SUMMARY

The existing vegetation located on the southern property is composed primarily of giant fishtail palms, mixed with specimen royal palms and other smaller palms. The Landscape Architect intends to keep all vegetation along the southern property line. There are (2) large ficus tree #26 and #10 that are in poor condition, and in conflict with the proposed residence, please see arborist report on sheet L-201. There are some nice specimen palms and (1) mango trees that are being relocated to the southern property line. (2) Bismarck Palms are being relocated in the front property.

SCOPE OF WORK

- Preservation of existing vegetation along southern property line
- Specimen Palm and Tree Relocation
- New landscape design to complement New Contemporary Residence

INDEX OF SHEETS

- L-000 Landscape Cover Page + Sheet Index
L-100 Landscape Plan
L-101 Landscape Legend + Plant List + Landscape Notes + Details
L-200 Existing Tree Survey
L-201 Disposition Chart + Arborist Report

NEW RESIDENCE
421 E. SAN MARINO
MIAMI BEACH, FLORIDA

CHRISTOPHER CAWLEY | CC
LANDSCAPE ARCHITECTURE LLC | LA
Florida Landscape Architecture Business, LC 26000460
700 NE 80th Street | Suite 100 Miami, FL 33138
T 305.978.1585 | www.christophercawley.com

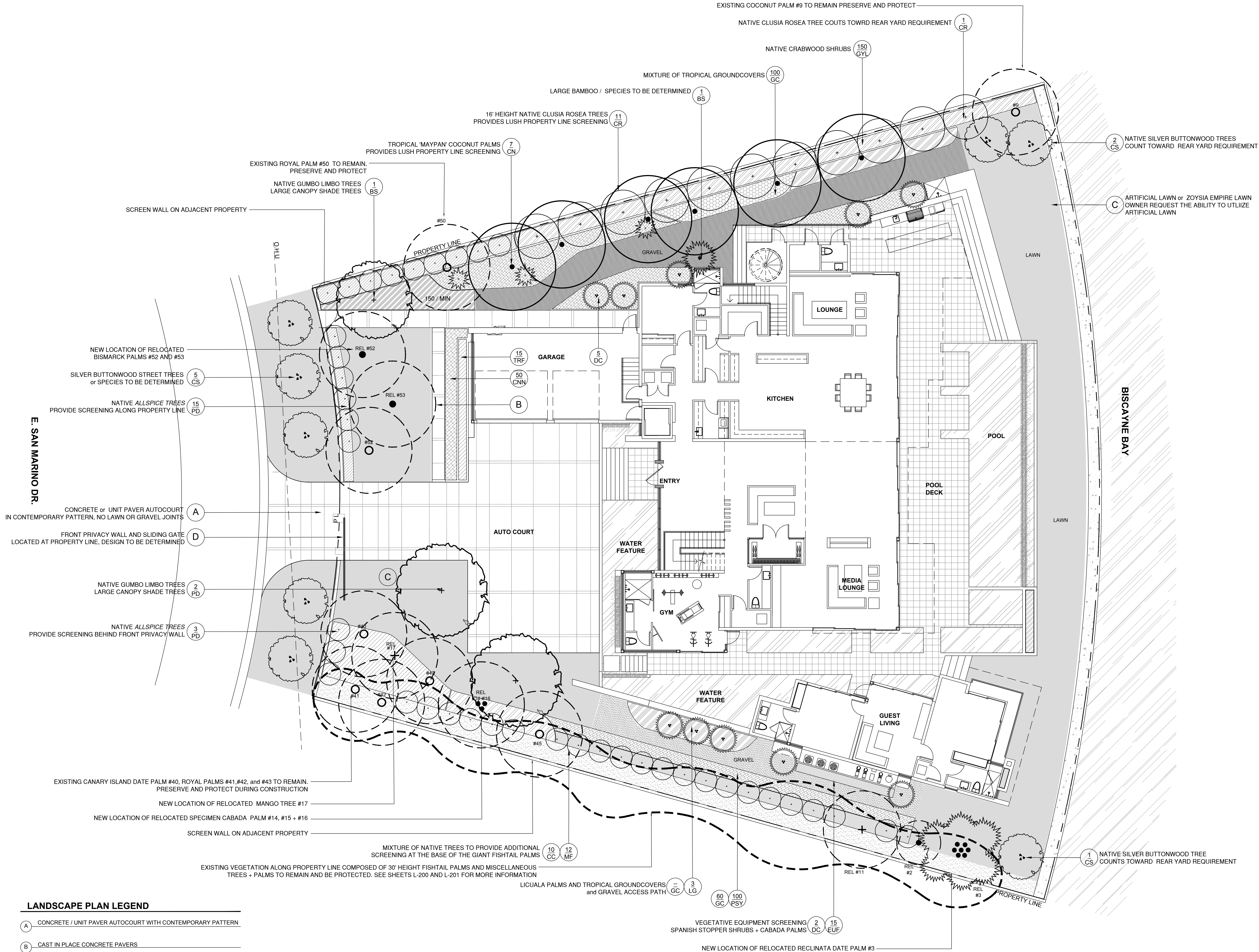
CHOEFF LEVY FISCHMAN
ARCHITECTURE + DESIGN
8425 Biscayne Blvd, suite 201
Miami, Florida 33138
T 305.892.5282
www.choefflevy.com

comm no.
1660

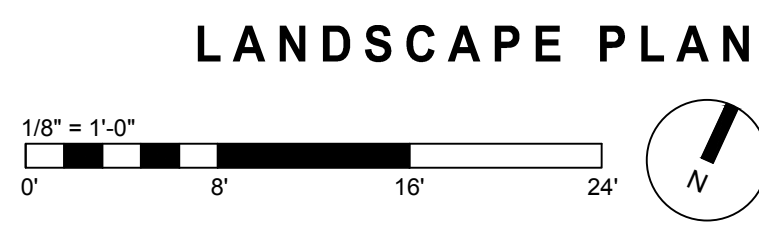
date:
05/23/17

revised:
DRB SECOND SUBMITTAL 07.06.17

sheet no.



LANDSCAPE PLAN LEGEND	
(A)	CONCRETE / UNIT PAVER AUTOCOURT WITH CONTEMPORARY PATTERN
(B)	CAST IN PLACE CONCRETE PAVERS
(C)	ARTIFICIAL LAWN or ZOYSIA EMPIRE LAWN
(D)	FRONT SCREEN WALL AND SLIDING GATE SEE ARCH PLANS



MIAMI BEACH DRB LANDSCAPE SUBMITTAL 06.06.17

CHRISTOPHER CAWLEY CC LANDSCAPE ARCHITECTURE LLC

421 E. SAN MARINO MIAMI BEACH, FLORIDA

1660

05/23/17

DRB SECOND SUBMITTAL 07.06.17

CHOEFF LEVY FISCHMAN

ARCHITECTURE + DESIGN

8425 Biscayne Blvd, Suite 201 Miami, Florida 33138

(305) 434-8338 (305) 392-5282

www.choefflevy.com

NEW RESIDENCE

421 E. SAN MARINO

MIAMI BEACH, FLORIDA

seal

CHRISTOPHER CAWLEY, RLA

Florida License LA 990706

comm no.

1660

date:

05/23/17

revised:

DRB SECOND SUBMITTAL 07.06.17

sheet no.

L-100



LOCATIONS OF ALL RELOCATED TREES AND PALMS ARE SHOWN SCHEMATICALLY AND ARE SUBJECT TO CHANGE BASED ON FIELD CONDITIONS

C.M.B. EXISTING TREE SURVEY LEGEND	
	TREE or PALM TO BE REMOVED. SEE CHART L-1b.
	TREE or PALM TO REMAIN. PRESERVE + PROTECT
	TREE or PALM TO BE RELOCATED
	RELOCATED TREE or PALM
	TREE or PALM PROTECTION FENCE

- C.M.B. CHAPTER 46, DIVISION 2 - TREE INVENTORY + DISPOSITION PLAN NOTES**
- THIS "EXISTING TREE INVENTORY + DISPOSITION PLAN" HAS BEEN PREPARED IN ACCORDANCE WITH THE CITY OF MIAMI BEACH, CHAPTER 46 - ENVIRONMENT, DIVISION 2, TREE PRESERVATION AND PROTECTION ORDINANCE.
 - EXISTING TREE, PALM, AND VEGETATION INFORMATION AS INDICATED HAS BEEN PREPARED AS AN OVERLAY ON THE SURVEY PREPARED BY SCHWEBKE -SHISKIN DATED 06.17.14
 - THE INFORMATION AS PRESENTED HEREIN HAS BEEN FIELD VERIFIED BY THE LANDSCAPE ARCHITECT ON 05.18.17
 - MIAMI BEACH P-2 MUST APPROVE LANDSCAPE PLANS PRIOR TO REMOVING ANY TREES OR PALMS WITH A DBH BETWEEN 6" AND 12" INCHES. A WRITTEN TREE REMOVAL PERMIT IS REQUIRED FROM CITY OF MIAMI BEACH GREENSPACE MANAGEMENT / P.W FOR THE REMOVAL OF TREES / PALMS WITH A DBH GREATER THAN 12" INCHES OR IN THE R.O.W.
 - THE OWNER RESERVES THE RIGHT TO REMOVE ANY VEGETATION NOT LOCATED WITHIN THE CITY R.O.W. w/ a D.B.H. OF LESS THAN 6" WITHOUT OBTAINING A TREE REMOVAL PERMIT.
 - THERE ARE NO TREES OR PALMS LOCATED ON THIS PROPERTY THAT WILL REQUIRE TEMPORARY IRRIGATION. ALL EXISTING TREES + PALMS ARE MATURE AND ARE CURRENTLY THRIVING WITHOUT SUPPLEMENTAL IRRIGATION WATER.

seal

CHRISTOPHER CAWLEY, RLA
Florida License LA 899076

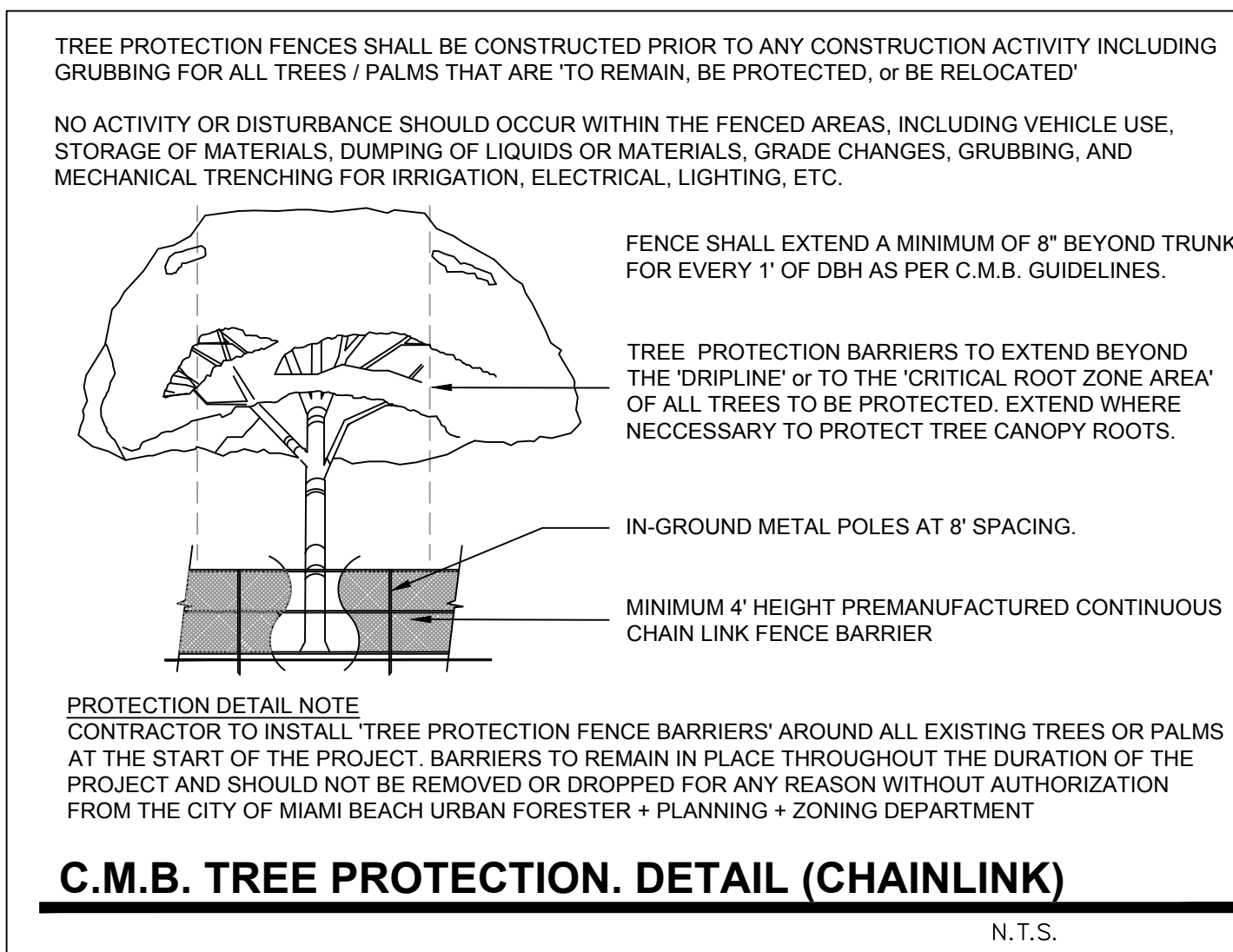
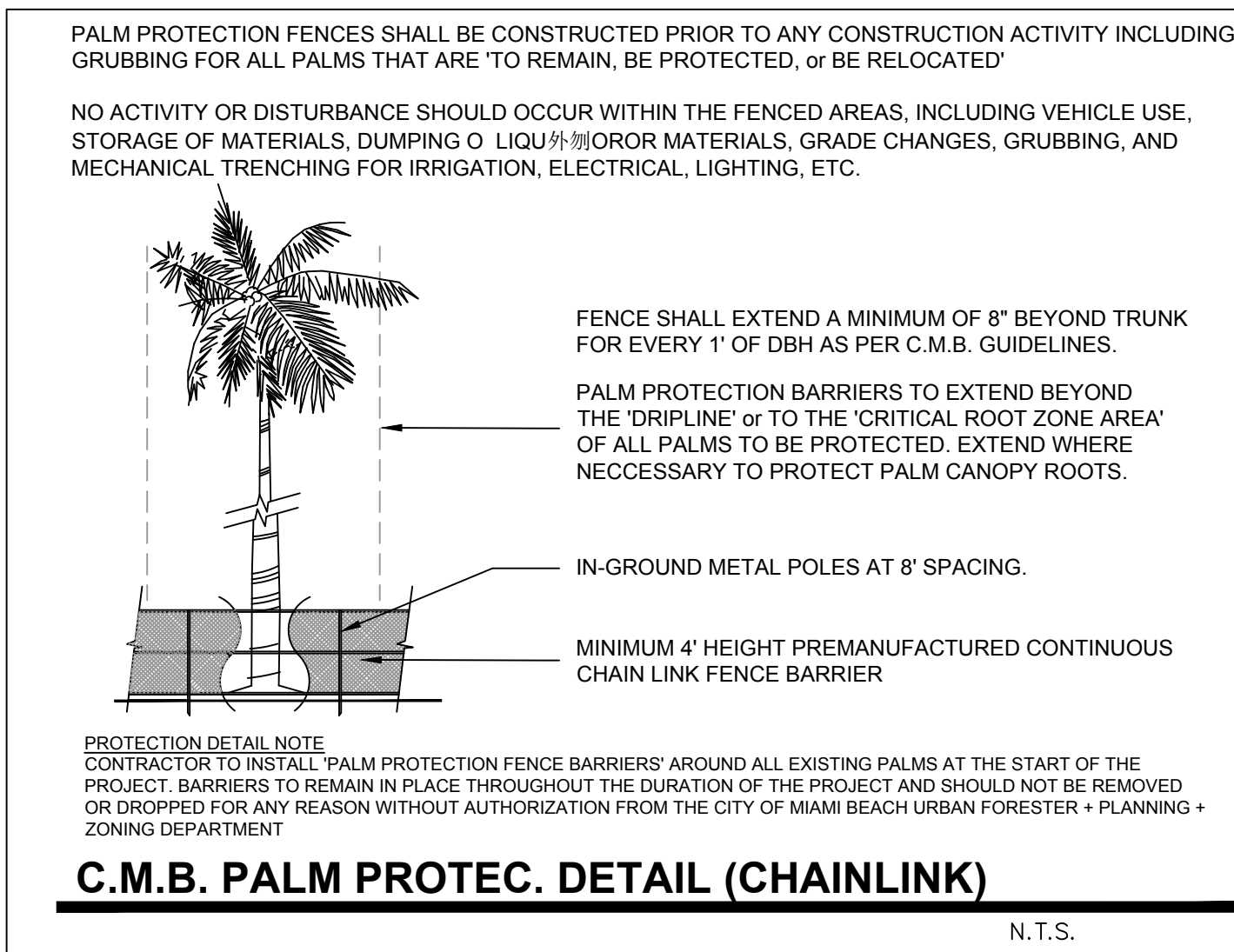
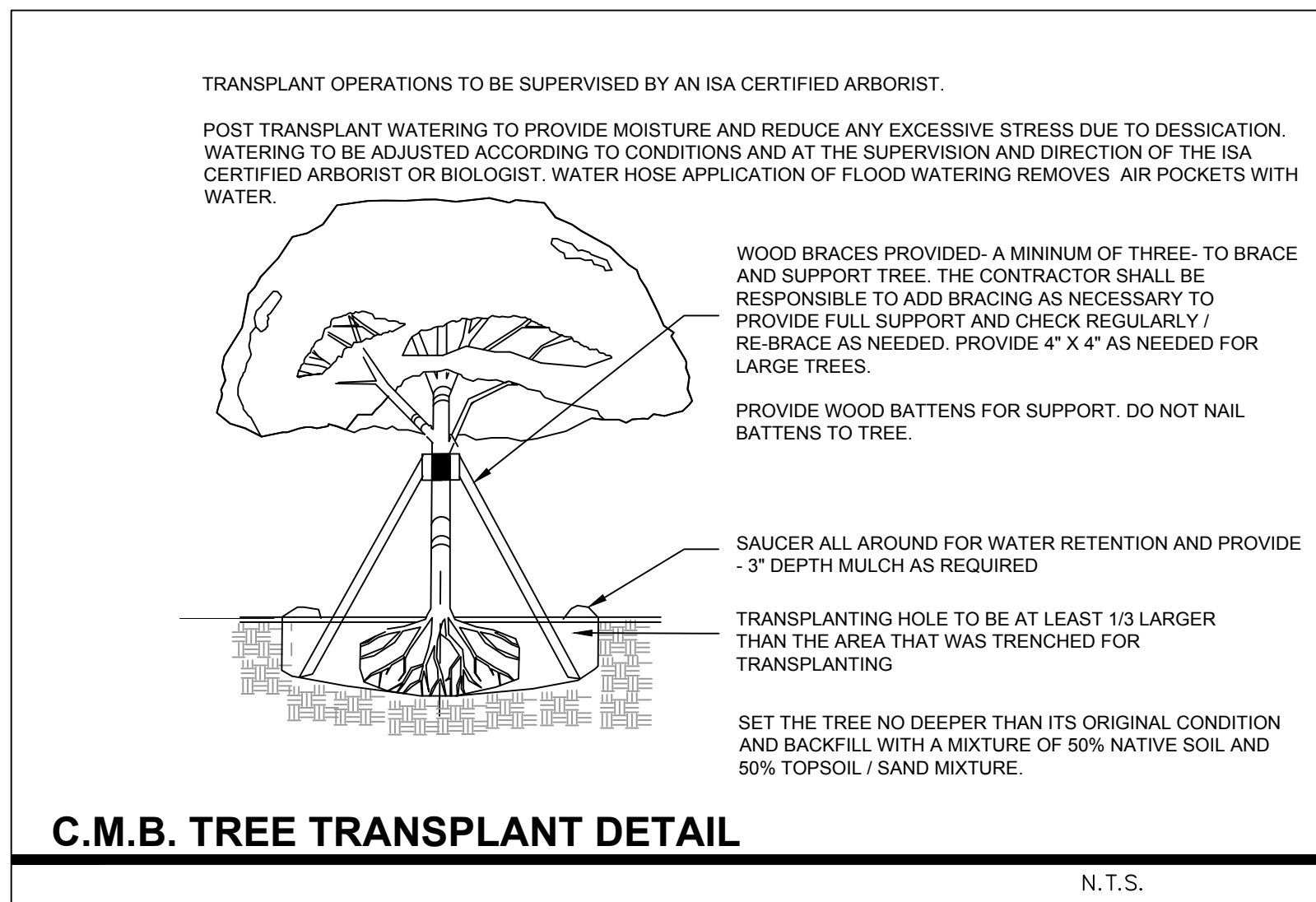
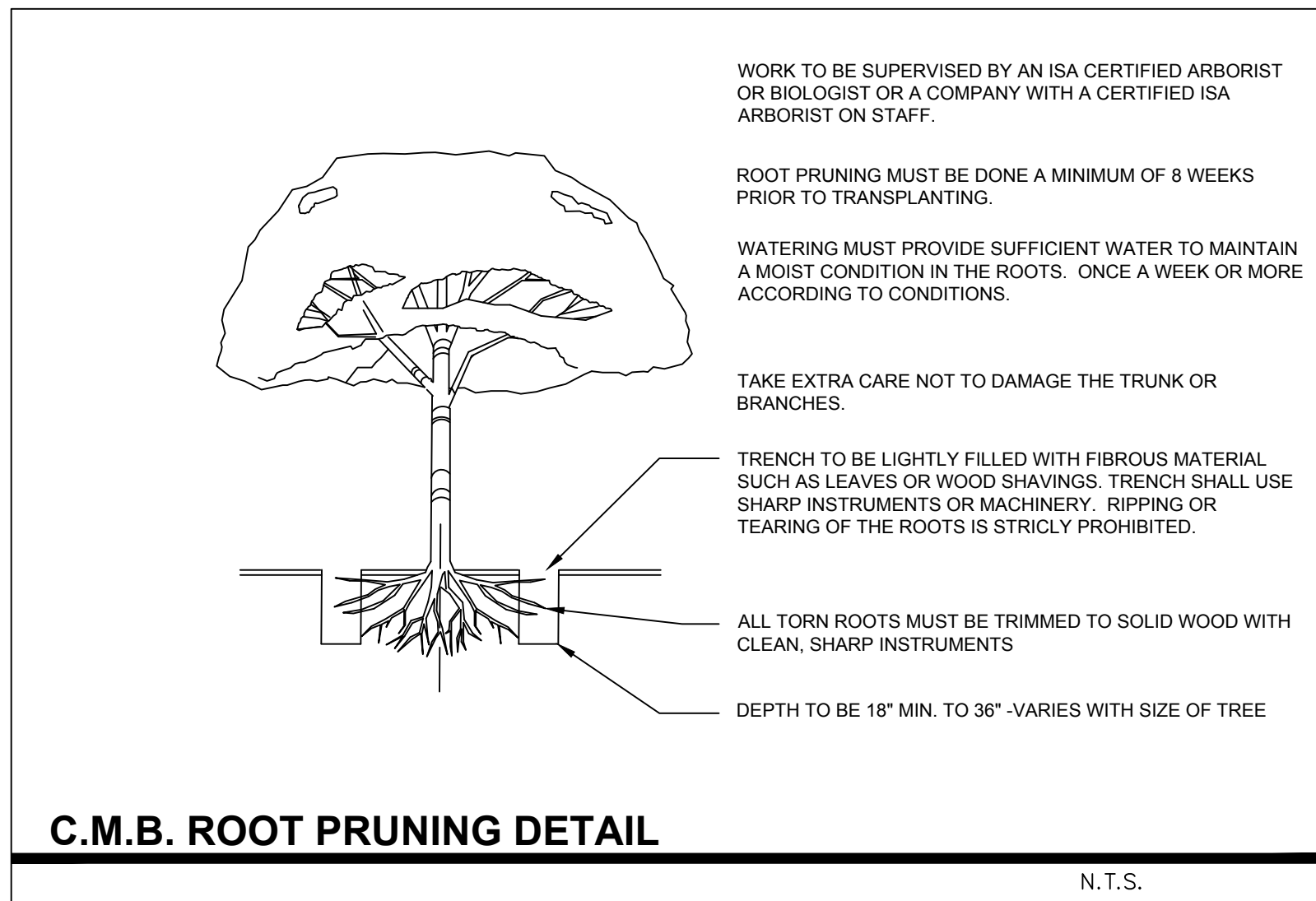
comm no.
1660

date:
05/23/17

revised:
DRB SECOND SUBMITTAL 07.06.17

sheet no.

L-201



C.M.B. CANOPY MITIGATION NOTES

THE CANOPY MITIGATION OF 7,144 SF AS REQUIRED BY THE CITY OF MIAMI BEACH, CHAPTER 46 - ENVIRONMENT, DIVISION 2, TREE PRESERVATION and PROTECTION ORDINANCE HAS BEEN MET AND EXCEEDED. A TOTAL 10,800 SF OF CANOPY HAS BEEN PROVIDED.

CANOPY MITIGATION SUMMARY

- (3) NATIVE GUMBO LIMBO TREES: 900 SF (MB category I @ 300 SF each)
- (11) NATIVE CLUSIA ROSEA TREES: 3,300 SF (MB category I @ 300 SF each)
- (10) NATIVE JAMAICAN CAPER TREES: 1,500 SF (MB category II @150 SF each)
- (8) NATIVE SILVER BUTTONWOOD TREES: 1,200 SF (MB category II @150 SF each)
- (12) NATIVE SIMPSON STOPPER TREES: 1,800 SF (MB category II @150 SF each)
- (18) NATIVE ALL SPICE TREES: 1,800 SF (MB category III @100 SF each)
- (6) COCONUT PALMS: 300 SF (MB category IV @ 50 SF each)

C.M.B. EXISTING TREE INVENTORY + DISPOSITION CHART - 421 EAST SAN MARINO DRIVE

NUMBER	COMMON NAME	BOTANICAL NAME	SPECIMEN	D.B.H. (IN)	HEIGHT (FT)	SPREAD (FT)	CONDITION	DISPOSITION	CANOPY AREA	CANOPY LOSS / MT. REQ.	COMMENTS	PERMIT REQ
#1	BOTTLE BRUSH TREE	Callistemon viminalis	YES	+/- 30"	+/- 30'	+/- 22'	FAIR	REMOVE	380 SF	760 SF	MITIGATION PROVIDED / SEE ARBORIST REPORT	TREE PERMIT REQ
#2	BLUE LATAN PALM	Latania loddigesii	YES	+/- 12"	+/- 18'	+/- 12'	GOOD	RELOCATE	114 SF	0 SF	SEE NEW LOCATION SHEET L-100	
#3	SENEGAL DATE PALM	Phoenix reclinata	YES	+/- 84"	+/- 24'	+/- 28'	GOOD	RELOCATE	615 SF	0 SF	SEE NEW LOCATION SHEET L-100	
#4	ALEXANDER PALM	Pythosperma elegans	NO	+/- 4"	+/- 14'	+/- 6'	GOOD	REMOVE	29 SF	0 SF	PROHIBITED SPECIES IN MIAMI BEACH / NO MITIGATION REQ.	NO PERMIT REQ
#5	ALEXANDER PALM	Pythosperma elegans	NO	+/- 4"	+/- 14'	+/- 6'	GOOD	REMOVE	29 SF	0 SF	PROHIBITED SPECIES IN MIAMI BEACH / NO MITIGATION REQ.	NO PERMIT REQ
#6	ALEXANDER PALM	Pythosperma elegans	NO	+/- 4"	+/- 14'	+/- 6'	GOOD	REMOVE	29 SF	0 SF	PROHIBITED SPECIES IN MIAMI BEACH / NO MITIGATION REQ.	NO PERMIT REQ
#7	ALEXANDER PALM	Pythosperma elegans	NO	+/- 4"	+/- 14'	+/- 6'	GOOD	REMOVE	29 SF	0 SF	PROHIBITED SPECIES IN MIAMI BEACH / NO MITIGATION REQ.	NO PERMIT REQ
#8	ALEXANDER PALM	Pythosperma elegans	NO	+/- 4"	+/- 14'	+/- 6'	GOOD	REMOVE	29 SF	0 SF	PROHIBITED SPECIES IN MIAMI BEACH / NO MITIGATION REQ.	NO PERMIT REQ
#9	COCONUT PALM	Cocos nucifera	YES	+/- 12"	+/- 16'	+/- 22'	GOOD	REMAIN	379 SF	0 SF	PRESERVE + PROTECT. SEE PROTECTION DETAIL	
#10	STRANGLER FIG	Ficus aurea	YES	+/- 36"	+/- 30'	+/- 30'	POOR	REMOVE	706 SF	706 X 2 = 1,412 SF	MITIGATION PROVIDED / SEE ARBORIST REPORT	TREE PERMIT REQ
#11	GUMBO LIMBO TREE	Bursera simarubra	YES	+/- 12"	+/- 18'	+/- 10'	GOOD	RELOCATE	79 SF	0 SF	SEE NEW LOCATION SHEET L-100	
#12	CHRISTMAS PALM (multi)	Adonidia merrelli	NO	+/- 6"	+/- 20'	+/- 15'	GOOD	REMOVE	177 SF	177 SF	MITIGATION PROVIDED	TREE PERMIT REQ
#13	MACARTHUR PALM	Pythosperma macarthurii	NO	+/- 3"	+/- 6'	+/- 4"	GOOD	REMAIN	12 SF	0 SF	PRESERVE + PROTECT. SEE PROTECTION DETAIL	
#14	CABADA PALM (multi)	Dypsis cabadea	YES	+/- 12"	+/- 18'	+/- 5'	GOOD	RELOCATE	20 SF	0 SF	SEE NEW LOCATION SHEET L-100	
#15	CABADA PALM (multi)	Dypsis cabadea	YES	+/- 12"	+/- 18'	+/- 5'	GOOD	RELOCATE	20 SF	0 SF	SEE NEW LOCATION SHEET L-100	
#16	CABADA PALM (multi)	Dypsis cabadea	YES	+/- 12"	+/- 18'	+/- 5'	GOOD	RELOCATE	20 SF	0 SF	SEE NEW LOCATION SHEET L-100	
#17	MANGO TREE	Mangifera indica	YES	+/- 20"	+/- 28'	+/- 28'	GOOD	RELOCATE	615 SF	0 SF	SEE NEW LOCATION SHEET L-100	
#18	QUEEN PALM	Arecastrum romanzoffianum	NO	+/- 10"	+/- 16'	+/- 20'	GOOD	REMAIN	314 SF	0 SF	PRESERVE + PROTECT. SEE PROTECTION DETAIL	
#19	FISHTAIL PALM	Caryota mitis	YES	+/- 44"	+/- 36'	+/- 15'	GOOD	REMAIN	177 SF	0 SF	PRESERVE + PROTECT. SEE PROTECTION DETAIL	
#20	ROYAL PALM	Roystonea elata	NO	+/- 8"	+/- 16'	+/- 20'	GOOD	REMOVE	314 SF	0 SF	PRESERVE + PROTECT. SEE PROTECTION DETAIL	
#21	FISHTAIL PALM	Caryota mitis	YES	+/- 48"	+/- 36'	+/- 15'	GOOD	REMAIN	177 SF	0 SF	PRESERVE + PROTECT. SEE PROTECTION DETAIL	
#22	FISHTAIL PALM	Caryota mitis	YES	+/- 40"	+/- 30'	+/- 15'	GOOD	REMAIN	177 SF	0 SF	PRESERVE + PROTECT. SEE PROTECTION DETAIL	
#23	FISHTAIL PALM	Caryota mitis	YES	+/- 48"	+/- 36'	+/- 15'	GOOD	REMAIN	177 SF	0 SF	PRESERVE + PROTECT. SEE PROTECTION DETAIL	
#24	ROYAL PALM	Roystonea elata	NO	+/- 10"	+/- 16'	+/- 20'	FAIR	REMOVE	314 SF	314 SF	MITIGATION PROVIDED	TREE PERMIT REQ
#25	ROYAL PALM	Roystonea elata	YES	+/- 12"	+/- 16'	+/- 20'	GOOD	REMOVE	314 SF	314 SF	MITIGATION PROVIDED	TREE PERMIT REQ
#26	STRANGLER FIG	Ficus aurea	YES	+/- 120"	+/- 50'	+/- 40'	POOR	REMOVE	1,256 SF	1,256 X 2 = 2,512 SF	MITIGATION PROVIDED / SEE ARBORIST REPORT	TREE PERMIT REQ
#27	ROYAL PALM	Roystonea elata	NO	+/- 6"	+/- 16'	+/- 4"	POOR	REMOVE	12 SF	12 SF	MITIGATION PROVIDED	TREE PERMIT REQ
#28	ALEXANDER PALM	Pythosperma elegans	NO	+/- 4"	+/- 6'	+/- 12'	POOR	REMOVE	114 SF	114 SF	MITIGATION PROVIDED	TREE PERMIT REQ
#29	FISHTAIL PALM	Caryota mitis	YES	+/- 36"	+/- 26'	+/- 15'	GOOD	REMAIN	177 SF	0 SF	PRESERVE + PROTECT. SEE PROTECTION DETAIL	
#30	FISHTAIL PALM	Caryota mitis	NO	+/- 5"	+/- 30'	+/- 15'	GOOD	REMAIN	177 SF	0 SF	PRESERVE + PROTECT. SEE PROTECTION DETAIL	
#31	FISHTAIL PALM	Caryota mitis	NO	+/- 5"	+/- 30'	+/- 15'	GOOD	REMAIN	177 SF	0 SF	PRESERVE + PROTECT. SEE PROTECTION DETAIL	
#32	FISHTAIL PALM	Caryota mitis	NO	+/- 5"	+/- 30'	+/- 15'	GOOD	REMAIN	177 SF	0 SF	PRESERVE + PROTECT. SEE PROTECTION DETAIL	
#33	FISHTAIL PALM	Caryota mitis	NO	+/- 5"	+/- 30'	+/- 15'	GOOD	REMAIN	177 SF	0 SF	PRESERVE + PROTECT. SEE PROTECTION DETAIL	
#34	FISHTAIL PALM	Caryota mitis	NO	+/- 5"	+/- 30'	+/- 15'	GOOD	REMAIN	177 SF	0 SF	PRESERVE + PROTECT. SEE PROTECTION DETAIL	
#35	FISHTAIL PALM	Caryota mitis	NO	+/- 5"	+/- 30'	+/- 15'	GOOD	REMAIN	177 SF	0 SF	PRESERVE + PROTECT. SEE PROTECTION DETAIL	
#36	FISHTAIL PALM	Caryota mitis	NO	+/- 5"	+/- 30'	+/- 15'	GOOD	REMAIN	177 SF	0 SF	PRESERVE + PROTECT. SEE PROTECTION DETAIL	
#37	FISHTAIL PALM	Caryota mitis	NO	+/- 5"	+/- 30'	+/- 15'	GOOD	REMAIN	177 SF	0 SF	PRESERVE + PROTECT. SEE PROTECTION DETAIL	
#38	FISHTAIL PALM	Caryota mitis	NO	+/- 5"	+/- 30'	+/- 15'	GOOD	REMAIN	177 SF	0 SF	PRESERVE + PROTECT. SEE PROTECTION DETAIL	
#39	FISHTAIL PALM	Caryota mitis	NO	+/- 5"	+/- 30'	+/- 15'	GOOD	REMAIN	177 SF	0 SF	PRESERVE + PROTECT. SEE PROTECTION DETAIL	
#40	CANARY ISLAND DATE	Phoenix canariensis	YES	+/- 30"	+/- 16'	+/- 28'	GOOD	REMAIN	615 SF	0 SF	PRESERVE + PROTECT. SEE PROTECTION DETAIL	
#41	ROYAL PALM	Roystonea elata	YES	+/- 16"	+/- 20'	+/- 30'	GOOD	REMAIN	314 SF	0 SF	PRESERVE + PROTECT. SEE PROTECTION DETAIL	
#42	ROYAL PALM	Roystonea elata	YES	+/- 16"	+/- 20'	+/- 20'	GOOD	REMAIN	314 SF	0 SF	PRESERVE + PROTECT. SEE PROTECTION DETAIL	
#43	ROYAL PALM	Roystonea elata	YES	+/- 16"	+/- 20'	+/- 20'	GOOD	REMAIN	314 SF	0 SF	PRESERVE + PROTECT. SEE PROTECTION DETAIL	
#44	MANGO TREE	Mangifera indica	YES	+/- 4"	+/- 8'	+/- 28'	GOOD	REMOVE	615 SF	615 SF	MITIGATION PROVIDED	
#45	ROYAL PALM	Roystonea elata	YES	+/- 24"	+/- 24'	+/- 24'	GOOD	REMAIN	452 SF	0 SF	PRESERVE + PROTECT. SEE PROTECTION DETAIL	
#46	WHITE BIRD OF PARADISE	Strelitzia alba	NO	+/- 6"	+/- 10'	+/- 6'	GOOD	REMOVE	29 SF	29 SF	MITIGATION PROVIDED	NO PERMIT REQ
#47	WHITE BIRD OF PARADISE	Strelitzia alba	NO	+/- 6"	+/- 10'	+/- 6'	GOOD	REMOVE	29 SF	29 SF	MITIGATION PROVIDED	NO PERMIT REQ
#48	WHITE BIRD OF PARADISE	Strelitzia alba	NO	+/- 6"	+/- 10'	+/- 6'	GOOD	REMOVE	29 SF	29 SF	MITIGATION PROVIDED	NO PERMIT REQ
#49	WHITE BIRD OF PARADISE	Strelitzia alba	NO	+/- 6"	+/- 10'	+/- 6'	GOOD	REMOVE	29 SF	29 SF	MITIGATION PROVIDED	NO PERMIT REQ
#50	ROYAL PALM	Roystonea elata	YES	+/- 30"	+/- 40'	+/- 18'	GOOD	REMAIN	254 SF	0 SF	PRESERVE + PROTECT. SEE PROTECTION DETAIL	
#51	ROYAL PALM	Roystonea elata	YES	+/- 14"	+/- 20'	+/- 32'	GOOD	REMAIN	803 SF	0 SF	PRESERVE + PROTECT. SEE PROTECTION DETAIL	
#52	BIZMARCK PALM	Bismarckia nobilis	YES	+/- 24"	+/- 18'	+/- 16'	GOOD	REMAIN	200 SF	0 SF	PRESERVE + PROTECT. SEE PROTECTION DETAIL	
#53	BIZMARCK PALM	Bismarckia nobilis	YES	+/- 16"	+/- 18'	+/- 16'	GOOD	RELOCATE	200 SF	0 SF	SEE NEW LOCATION SHEET L-100	
#54	BIZMARCK PALM	Bismarckia nobilis	YES	+/- 18"	+/- 18'	+/- 24'	GOOD	RELOCATE	452 SF	0 SF	SEE NEW LOCATION SHEET L-100	
#55	BOUGAINVILLEA	Bougainvillea spp	NO	+/- 16"	+/- 10'	+/- 12'	FAIR	REMOVE	114 SF	114 SF	MITIGATION PROVIDED	TREE PERMIT REQ
#56	MANGOSTEEN TREE	Garcinia spicata	NO	+/- 6"	+/- 8'	+/- 4'	GOOD	REMOVE	12 SF	12 SF	MITIGATION PROVIDED	TREE PERMIT REQ
#57	MANGOSTEEN TREE	Garcinia spicata	NO	+/- 6"	+/- 8'	+/- 4'	GOOD	REMOVE	12 SF	12 SF	MITIGATION PROVIDED	TREE PERMIT REQ
#58	WAX LEAF PRIVET TREE	Ligustrum japonica	NO	+/- 10"	+/- 18'	+/- 14'	GOOD	REMOVE	153 SF	153 SF	MITIGATION PROVIDED	TREE PERMIT REQ
#59	HIBISCUS	Hibiscus spp	NO	+/- 5"	+/- 8'	+/- 10'	FAIR	REMOVE	79 SF	79 SF	MITIGATION PROVIDED	TREE PERMIT REQ
#60	PONYTAIL PALM	Beaucarnea recurvata	YES	+/- 24"	+/- 8'	+/- 12'	GOOD	REMOVE	114 SF	114 SF	MITIGATION PROVIDED	TREE PERMIT REQ
#61	LIGNUM VITAE	Quisqualis sarcentum	NO	+/- 6"	+/- 10'	+/- 16'	GOOD	REMAIN	200 SF	0 SF	PRESERVE + PROTECT. SEE PROTECTION DETAIL	
#62	SONG OF JAMAICA	Dracaena reflexa	YES	+/- 24"	+/- 16'	+/- 20'	FAIR	REMOVE	314 SF	314 SF	MITIGATION PROVIDED	TREE PERMIT REQ
#63	PITCH APPLE TREE	Clusia rosea	YES	+/- 24"	+/- 24'	+/- 24'	GOOD	REMAIN	452 SF	0 SF	PRESERVE + PROTECT. SEE PROTECTION DETAIL	
TOTAL MITIGATION REQUIRED: 7,144 SF										TOTAL MITIGATION PROVIDED: 10,800 SF		

Biscayne Environmental, Inc.

Environmental and Land Development Consultants • Mitigation Design and Contracting

May 25, 2017

Via email

Christopher Cawley, RLA
780 NE 69th Street, Suite 1108
Miami, FL 33138

RE: 421 E. San Marino Drive, Miami Beach
Evaluation of Existing Tree Resources
BEI Project No. 2017-11

Dear Mr. Cawley,

Pursuant to your request and authorization, I conducted a field inspection of the subject property on May 16, 2017. The purpose of the inspection was to identify and evaluate the existing tree resources to determine whether any of the existing trees are significant and warrant preservation or on-site relocation. The findings from the inspection follow.

The on-site inspection revealed that the existing tree resources include non-native ornamental trees that were planted originally as landscape material, fruit trees, exotic nuisance trees, and a native strangler fig tree and banyan tree that appear to have volunteered on the property. Trees observed in the front yard include 3 Bismarck palms, 1 Canary Island date palm, 1 mango, 1 gumbo limbo, 2 garcinia trees, a cluster of solitaire palms, and a cluster of cabada palms. Trees along the north property line include 2 royal palms and a banyan tree; and a cluster of solitaire palms and reclining date palms are found in the rear of the property adjacent to the swimming pool. A large strangler fig, royal palm, latania palm, and bottlebrush tree occur along the south property line.

Except for the large strangler fig on the south property line and the banyan tree along the north property line, the trees have been generally well maintained and are in good condition. The large ficus tree has a number of rotten trunks and structural damage to major canopy branches from prior storm damage and recent pruning that occurred (see attached photographs). Therefore, it is recommended that this strangler fig be removed and replaced with desirable native shade trees. The banyan tree on the north property line is growing in a very limited area between the two houses which has resulted in the canopy being cut back significantly (see attached photographs). The banyan tree also shows evidence of previous storm damage and the root system is running along the surface due to its close proximity to a CBS wall and the house. For these reasons, the banyan tree should be removed.

Because of their location along the north property line, the royal palms should be able to remain in place. All of the other palms could either remain in place (Canary Island date palm in particular), or be relocated on-site, or replaced by other desirable trees. The bottlebrush at the southeast corner of the property by the seawall should be removed and the 2 garcinia trees at the entrance of the house could either be removed or replaced.

Please contact me if you have any questions regarding the findings in this report.

Sincerely,
BISCAYNE ENVIRONMENTAL, INC.

David Etman, Senior Biologist
President

DE/ cs
Attachments

1761 Cleveland Road • Miami Beach, Florida 33141 • Telephone 305-710-2359 • Email biscayneinc@bellsouth.net

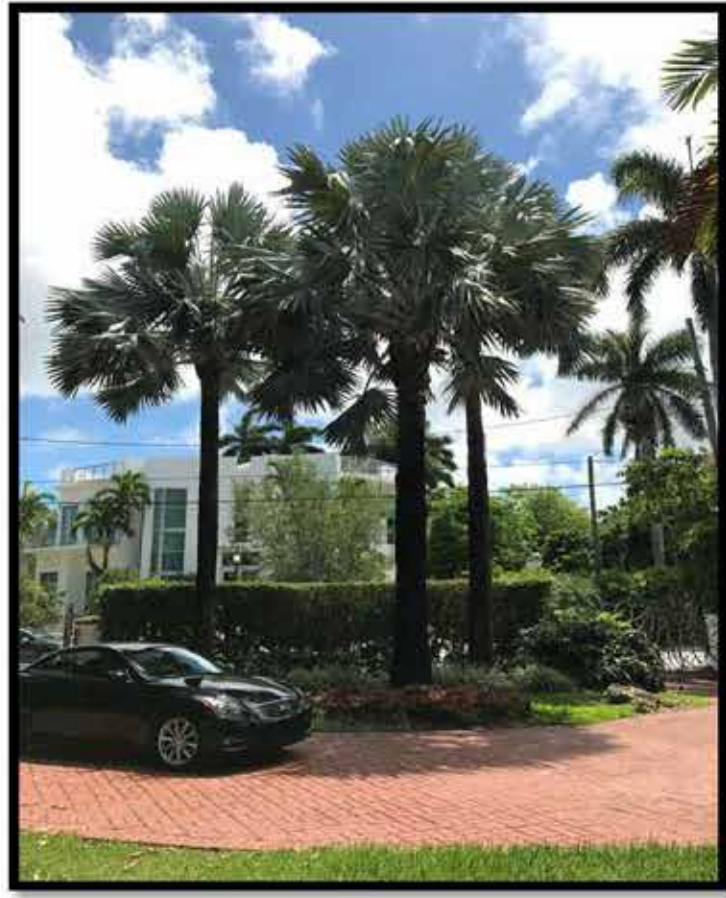


Photo 1 Bismarck palms in center of circular driveway.



Photo 2 Canary Island date palm at southwest corner of property.



Photo 3 Mango tree at southwest corner of property.



Photo 4 Cabada cluster at front entryway of house.

Biscayne Environmental, Inc. 1761 Cleveland Road Miami Beach, FL 33141 Tel. 305.710.2359 Email: biscayneinc@bellsouth.net	Project:	421 E San Marino Drive			
	Sheet Name:	Site Photographs			
	Prepared For:	Chris Cawley			
	Address:	421 E San Marino Drive			
	Project No.:	2017-11	Date:	5/25/17	Scale: NTS Sheet 1



Photo 5 Garcinas at front entrance of house.



Photo 6 Gumbo limbo in front yard.

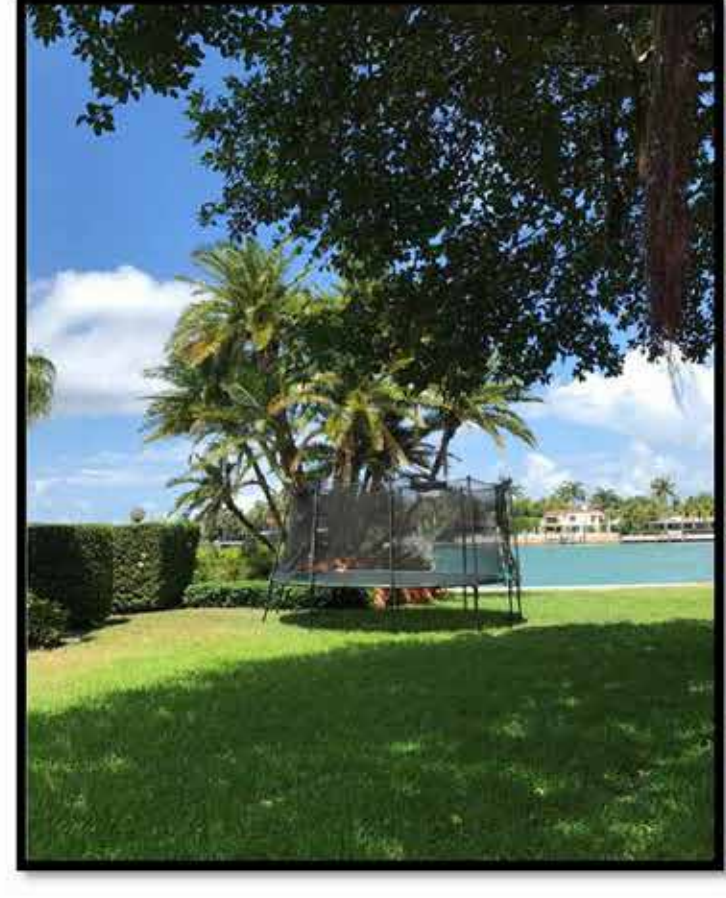


Photo 7 Reclining date palm cluster in side yard.



Photo 8 Strangler fig along south property line.

Biscayne Environmental, Inc. 1761 Cleveland Road Miami Beach, FL 33141 Tel. 305.710.2359 Email: biscayneinc@bellsouth.net	Project:	421 E San Marino Drive			
	Sheet Name:	Site Photographs			
	Prepared For:	Chris Cawley			
	Address:	421 E San Marino Drive			
	Project No.:	2017-11	Date:	5/25/17	Scale: NTS Sheet 2



Photo 9 Rotten trunk on west face of strangler fig.



Photo 10 Structural damage to canopy branches of strangler fig.



Photo 11 Close-up of structural branch damage.



Photo 12 Branch cluster on right half of photo resulting from storm damage regrowth.

Biscayne Environmental, Inc. 1761 Cleveland Road Miami Beach, FL 33141 Tel. 305.710.2359 Email: biscayneinc@bellsouth.net	Project:	421 E San Marino Drive			
	Sheet Name:	Site Photographs			
	Prepared For:	Chris Cawley			
	Address:	421 E San Marino Drive			
	Project No.:	2017-11	Date:	5/25/17	Scale: NTS Sheet 3



Photo 13 Banyan tree along north property line growing in confined space.



Photo 14 Close-up of banyan canopy showing shaving off of canopy on north side.



Photo 15 Exposed roots of banyan tree.

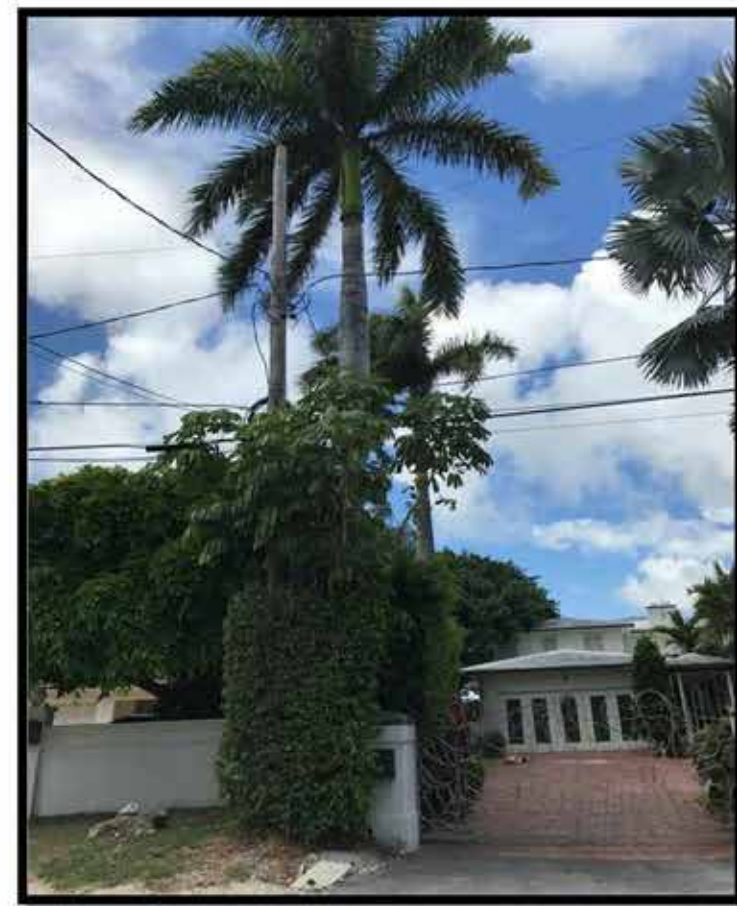


Photo 16 Royal palms along north property line.

Biscayne Environmental, Inc. 1761 Cleveland Road Miami Beach, FL 33141 Tel. 305.710.2359 Email: biscayneinc@bellsouth.net	Project:	421 E San Marino Drive			
	Sheet Name:	Site Photographs			
	Prepared For:	Chris Cawley			
	Address:	421 E San Marino Drive			
	Project No.:	2017-11	Date:	5/25/17	Scale: NTS Sheet 4



EXISTING BISMARCK PALMS



PD / ALL SPICE TREES



CN / COCONUT PALMS



BS / BLACK BAMBOO



CR / CLUSIA ROSEA TREE



TRF / DWARF FAKAHATCHEE GRASS



LG / LICUALA PALMS



MF / SIMPSON STOPPER TREE



DC / CABADA PALMS



EXISTING ROYAL PALMS



CC / JAMAICAN CAAPER



PGL / PHILODENDRON GLORIOSUM
TROPICAL GROUNDCOVER



MOD / MONSTERA DELICOUSA
TROPICAL GROUNDCOVER



SL / SATAKENTIA PALM



CS / SILVER BUTTONWOOD
STREET TREES

seal

CHRISTOPHER CAWLEY, RLA
Florida License LA 8990708

comm no.
1660

date:
05/23/17

revised:

sheet no.