

THE PARK CENTRAL HOTEL

626-650 OCEAN DRIVE

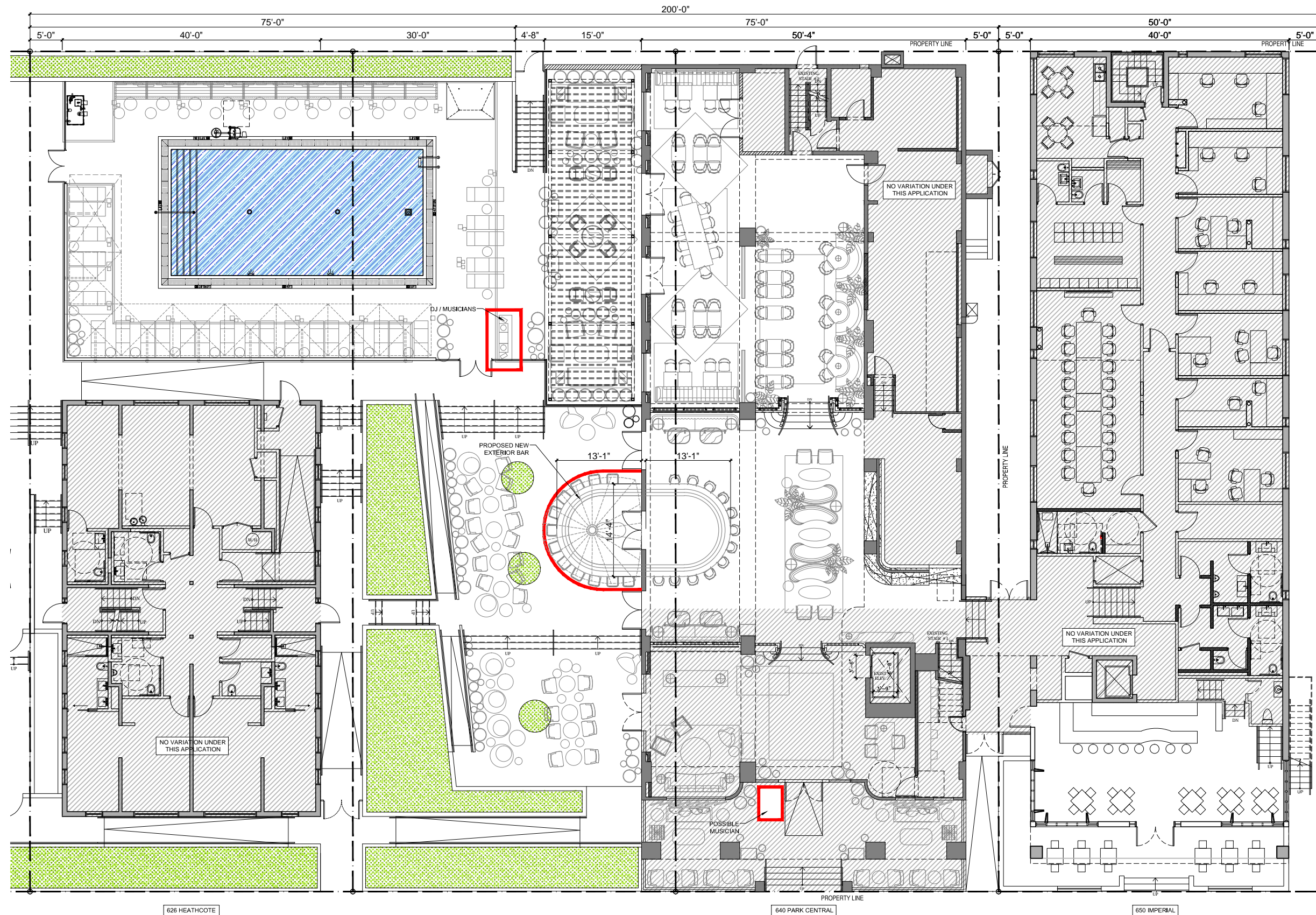
MIAMI BEACH FLORIDA

PLANNING BOARD SUBMITTAL

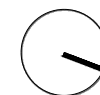
APRIL 10th 2017

SCOPE OF WORK:

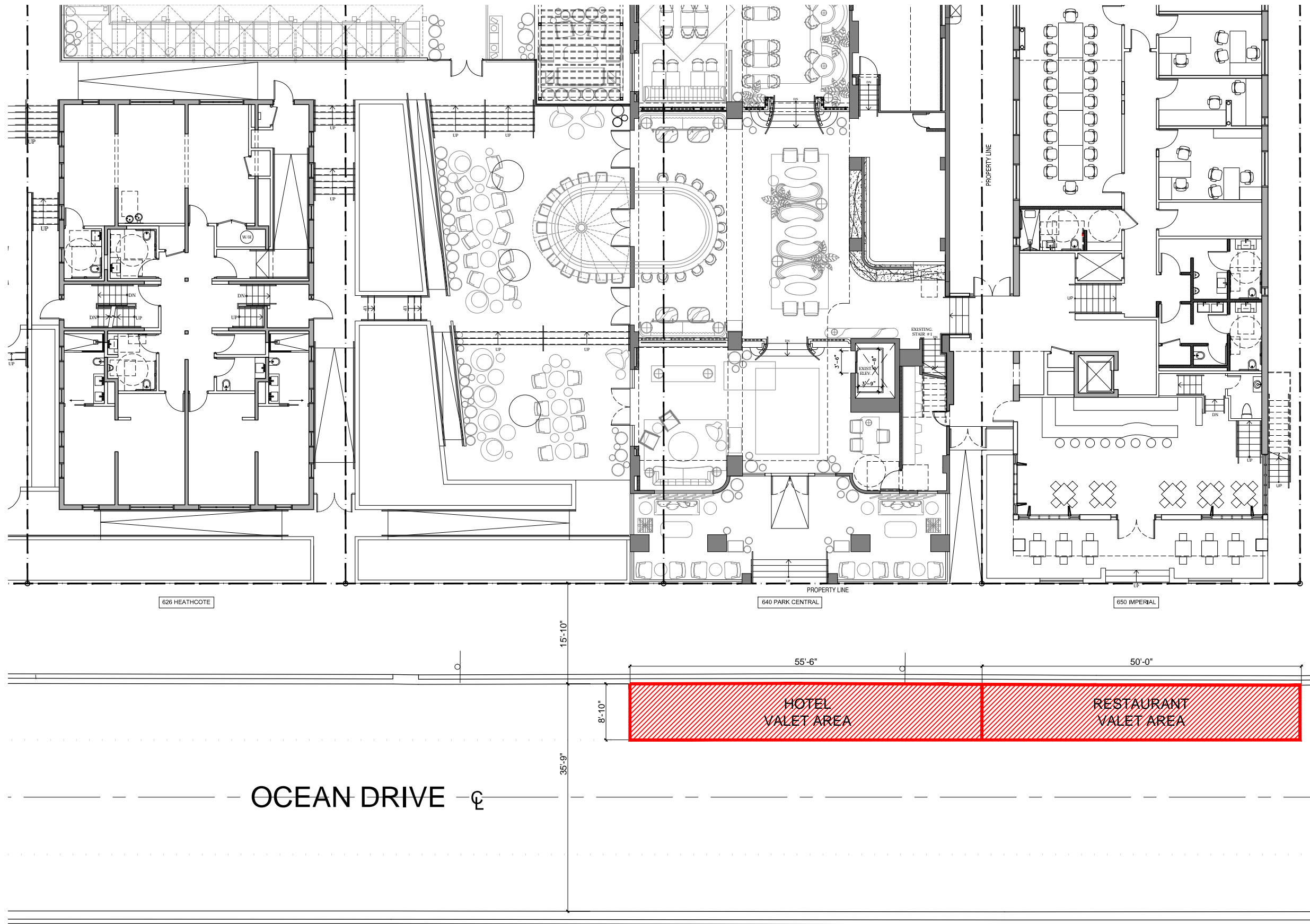
CONDITIONAL USE PERMIT FOR A NEIGHBORHOOD IMPACT ESTABLISHMENT AND OUTDOOR ENTERTAINMENT ESTABLISHMENT



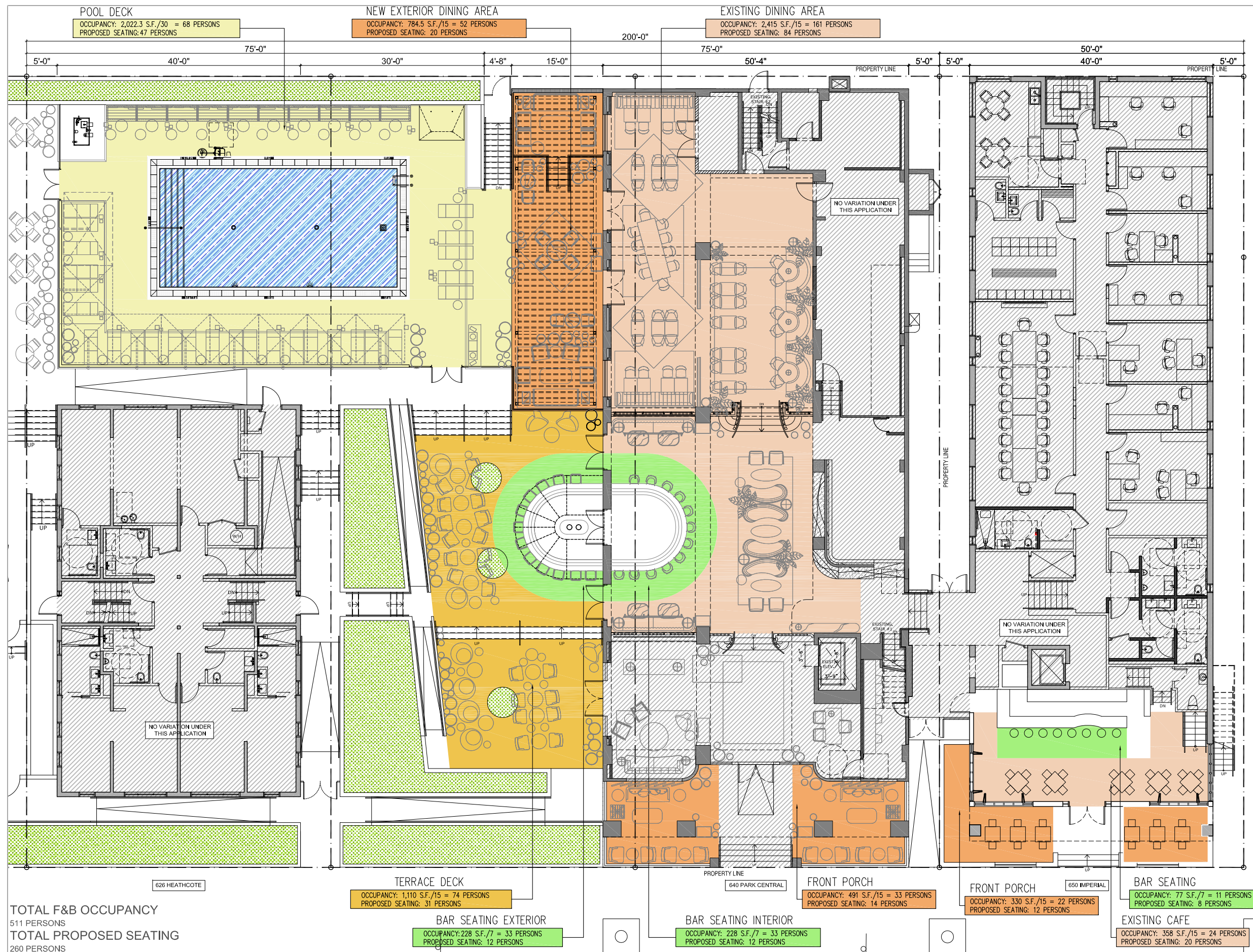
— NEW NEIGHBORHOOD IMPACT ESTABLISHMENTS / OUTDOOR ENTERTAINMENT



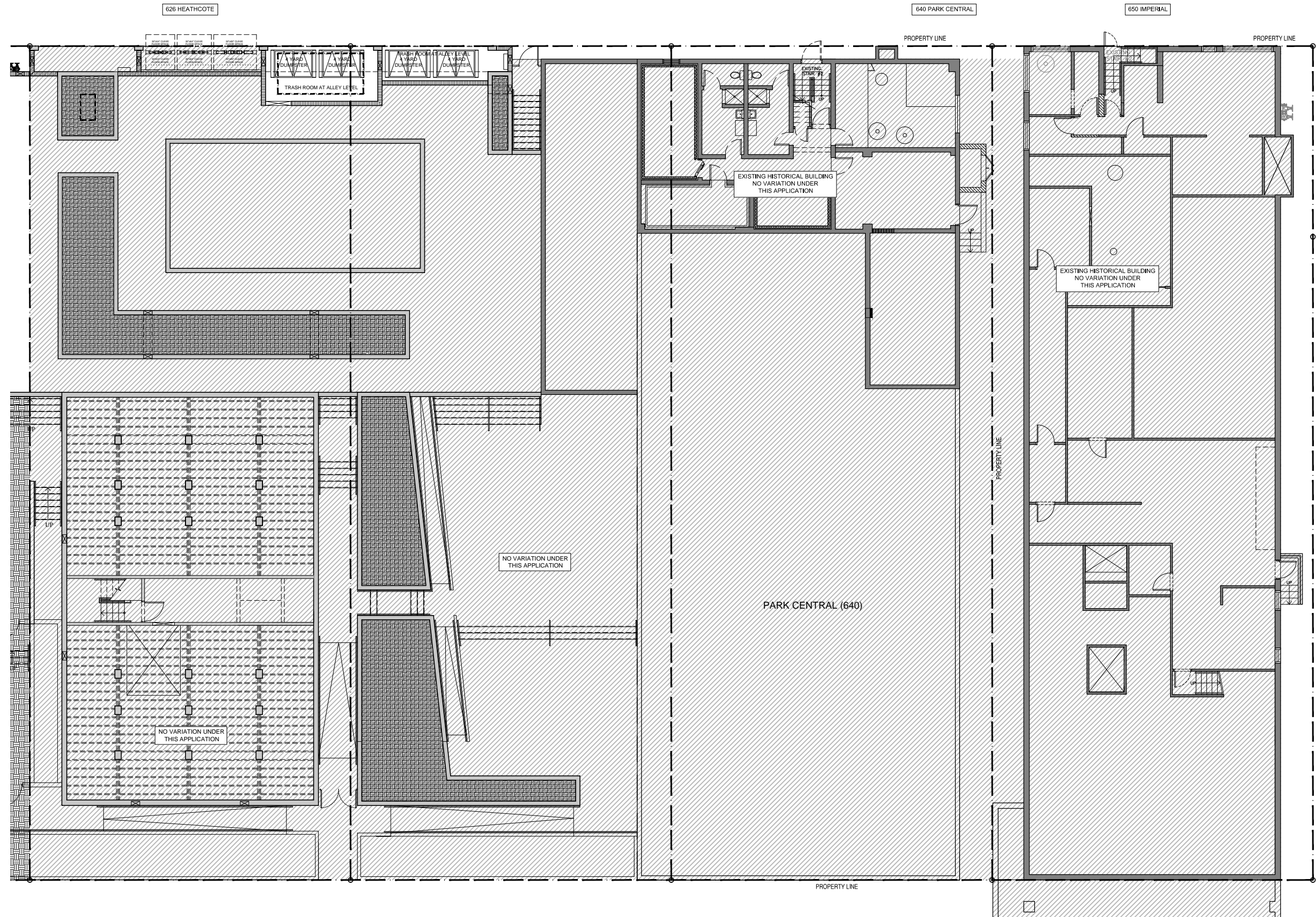
PROPOSED



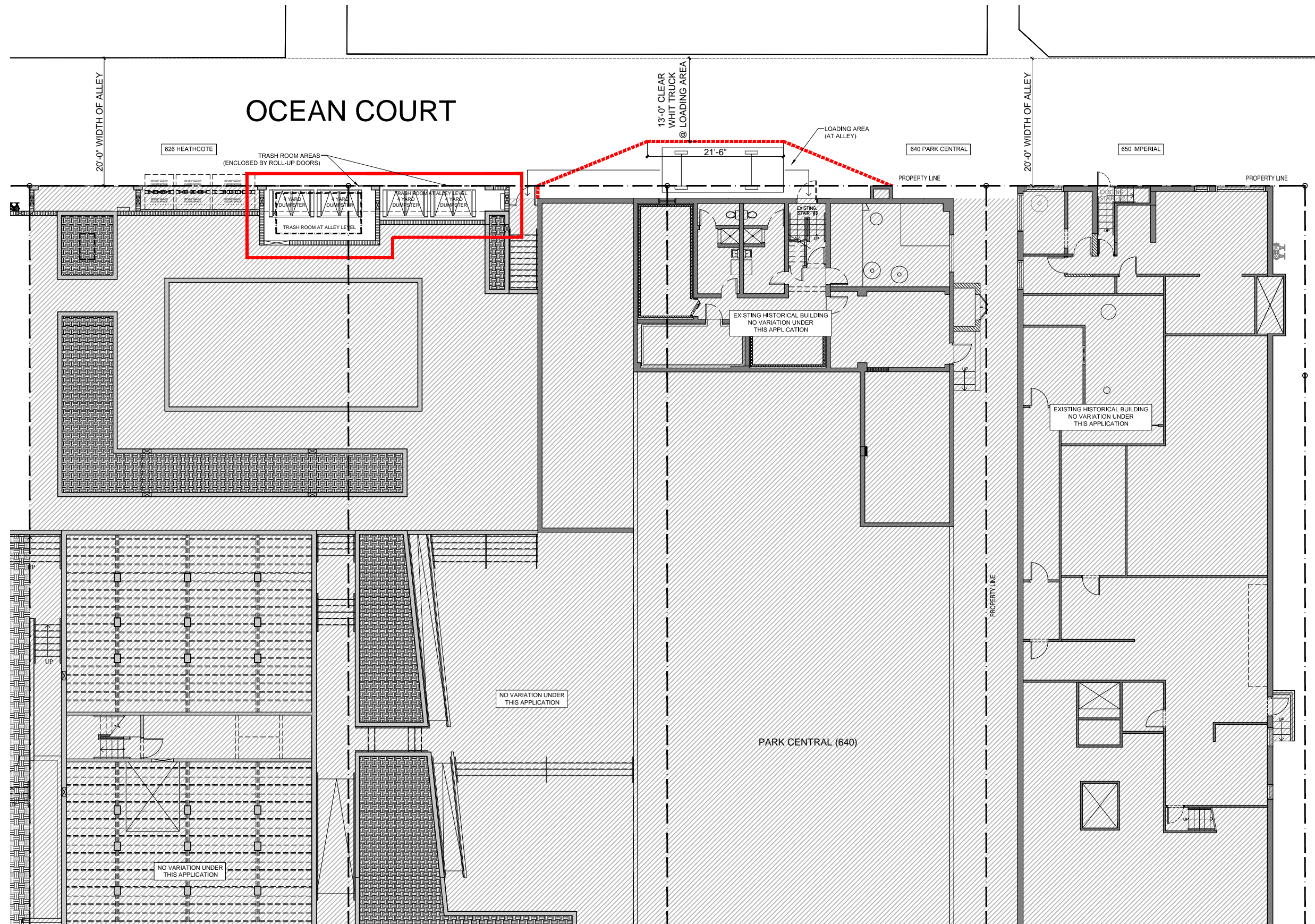
APPROVED



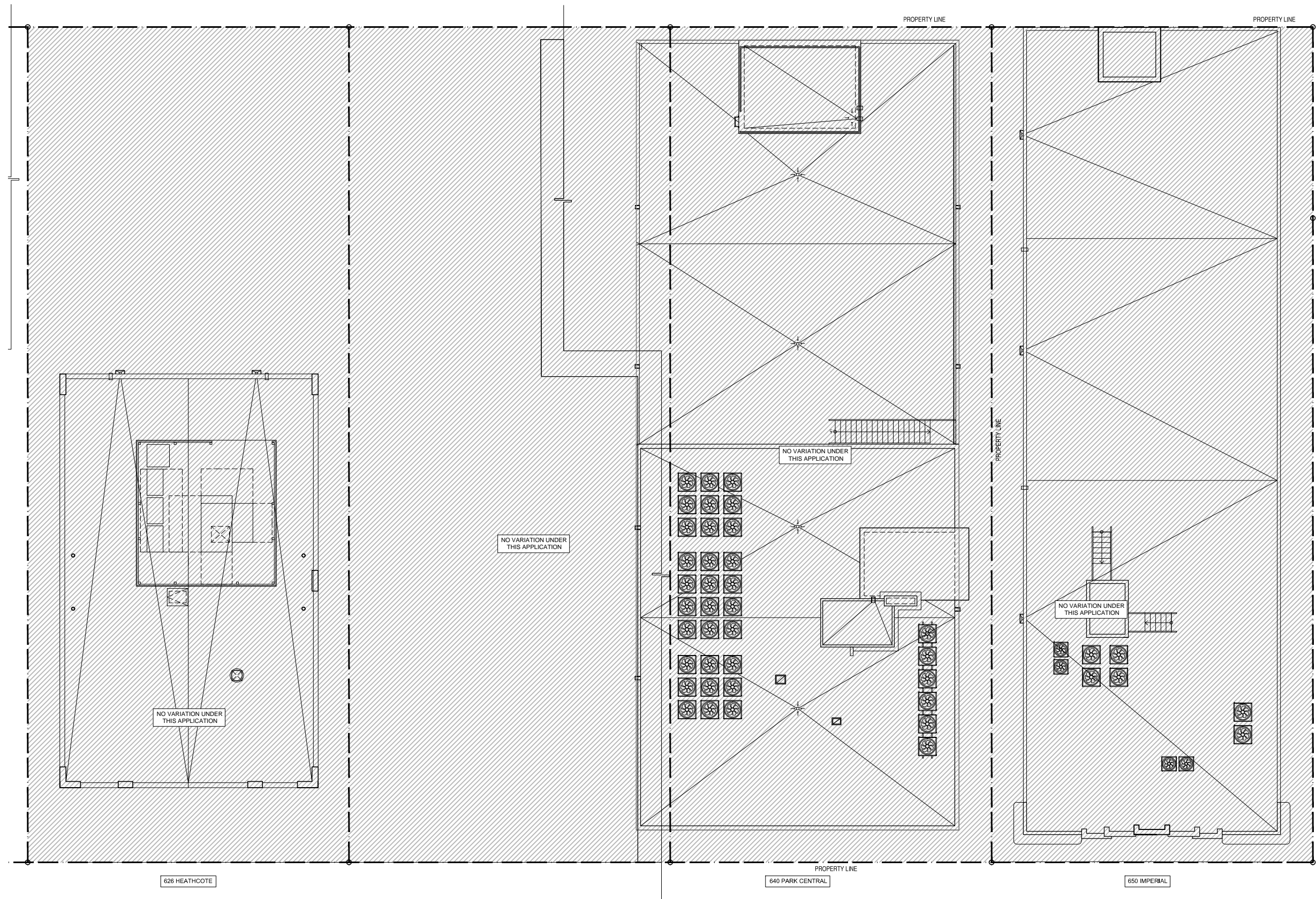
PROPOSED



APPROVED

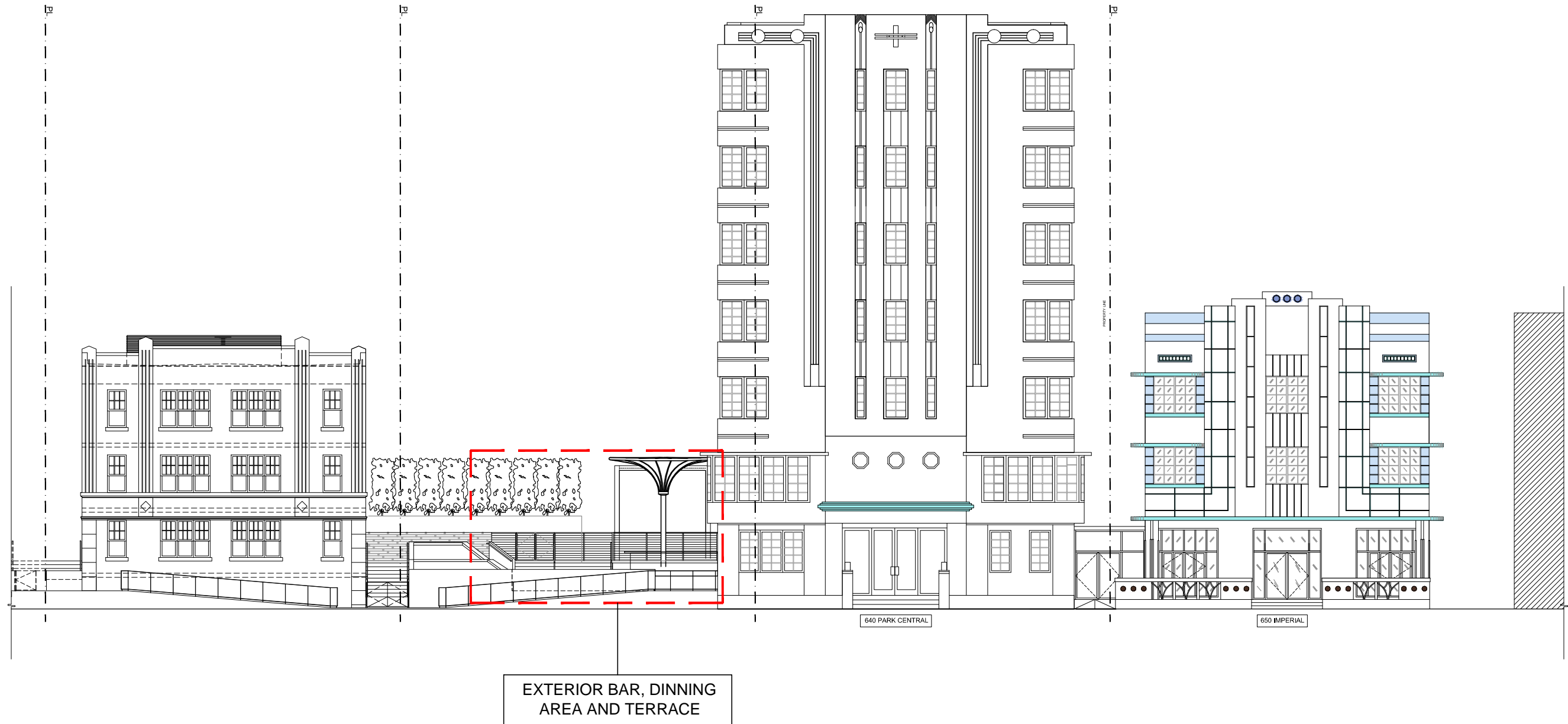


APPROVED



APPROVED







PROPOSED



PROPOSED

