

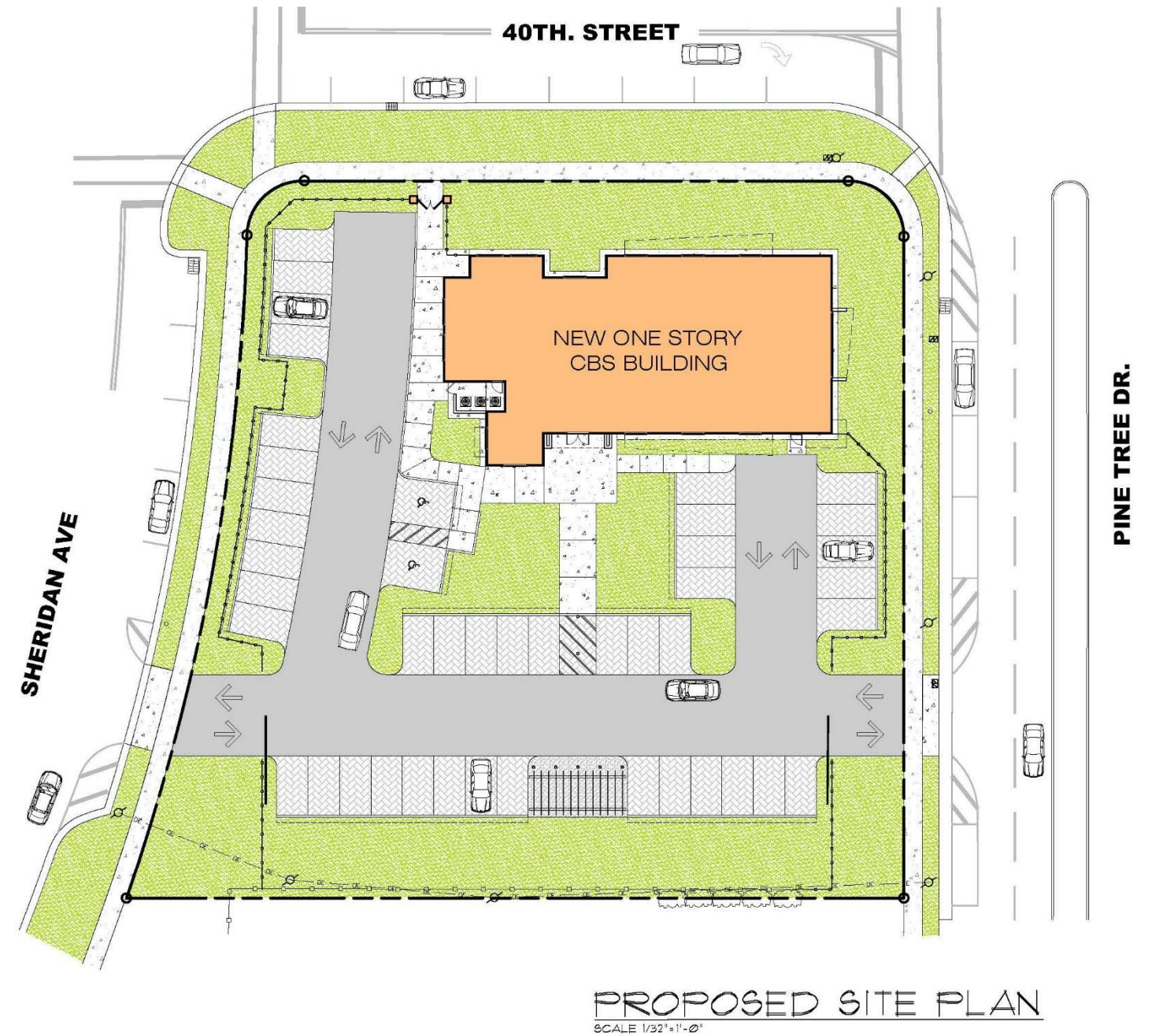
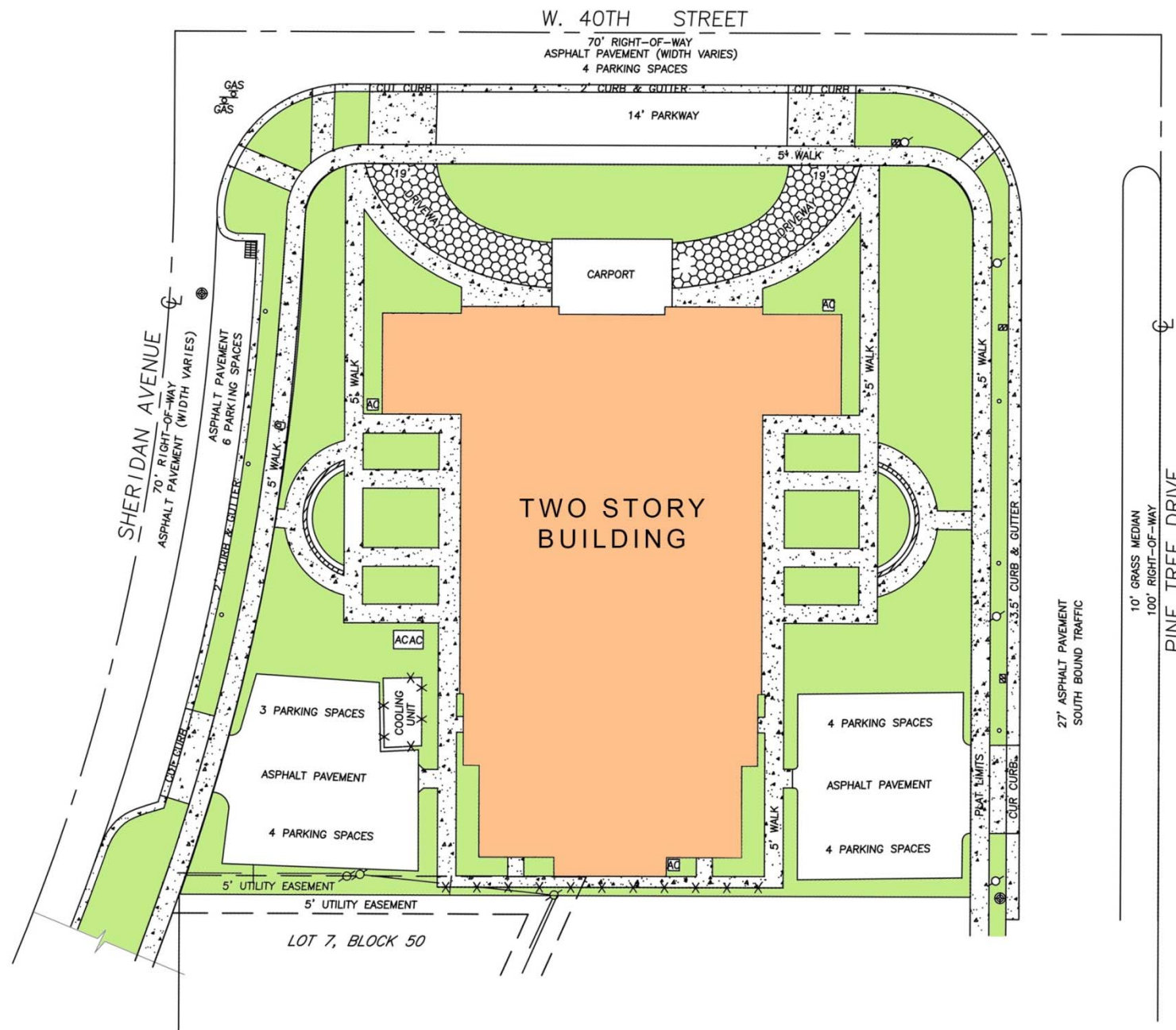
JW CONGREGATION OF SOUTH MIAMI BEACH INC.

300 WEST 40 STREET
MIAMI BEACH FL. 33140




BUILDING PROPOSAL

EXISTING & PROPOSED LOT COVERAGE

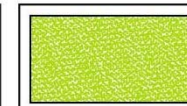


EXISTING LOT COVERAGE
SCALE = 1/32" = 1'

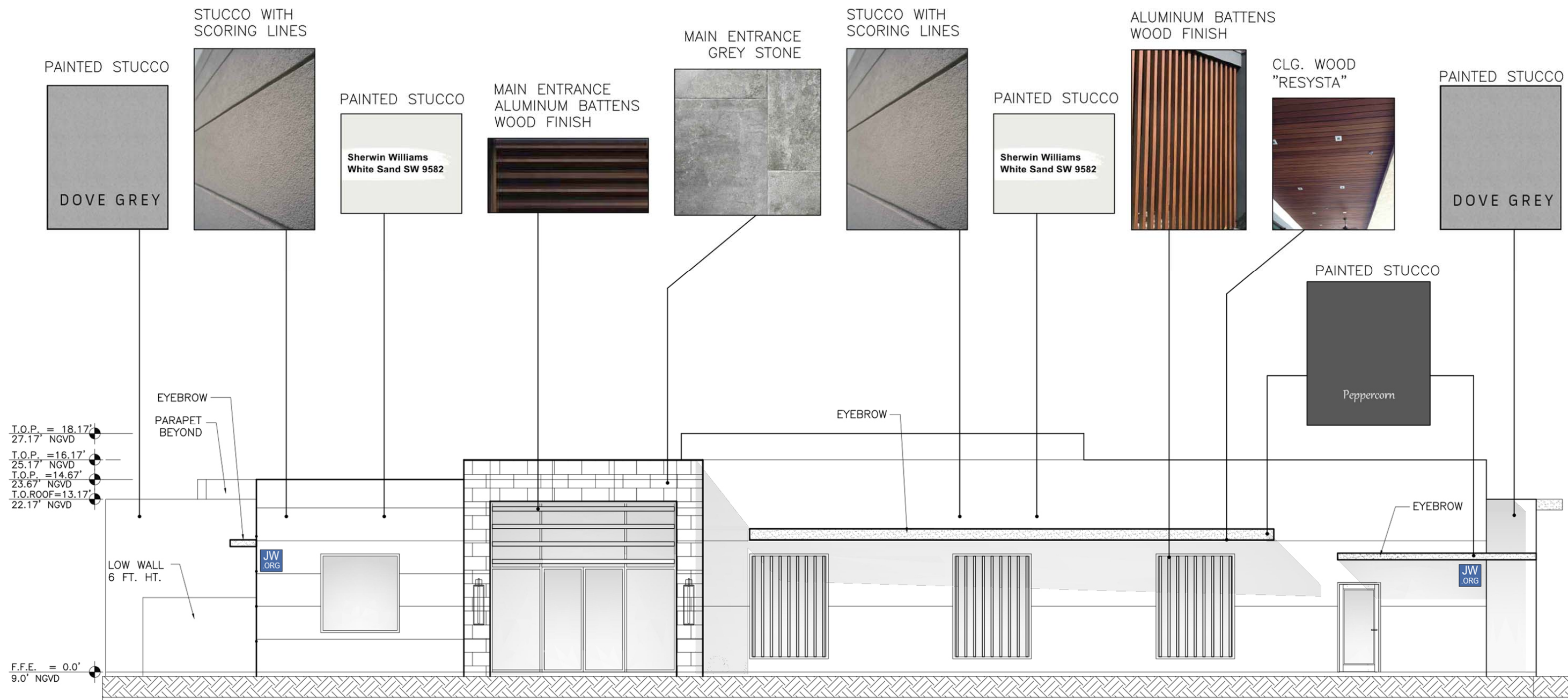
<u>LEGEND :</u>	
AREA INCLUDED IN THE CALCULATION OF LOT COVERAGE	

<u>LOT COVERAGE CALCULATION:</u> (EXISTING)	
	AREA S.F.
MAIN BUILDING (1st FLOOR)	12,641.98 S.F.
TOTAL LOT COVERAGE EXISTING	12,641.98 S.F.
MAX. LOT COVERAGE ALLOWED 40% OF LOT AREA (LOT AREA X 0.40) = (36,065.40 X 0.40)	14,426.16 S.F. (40%)
TOTAL LOT COVERAGE EXISTING	12,641.98 S.F. (35.05%)

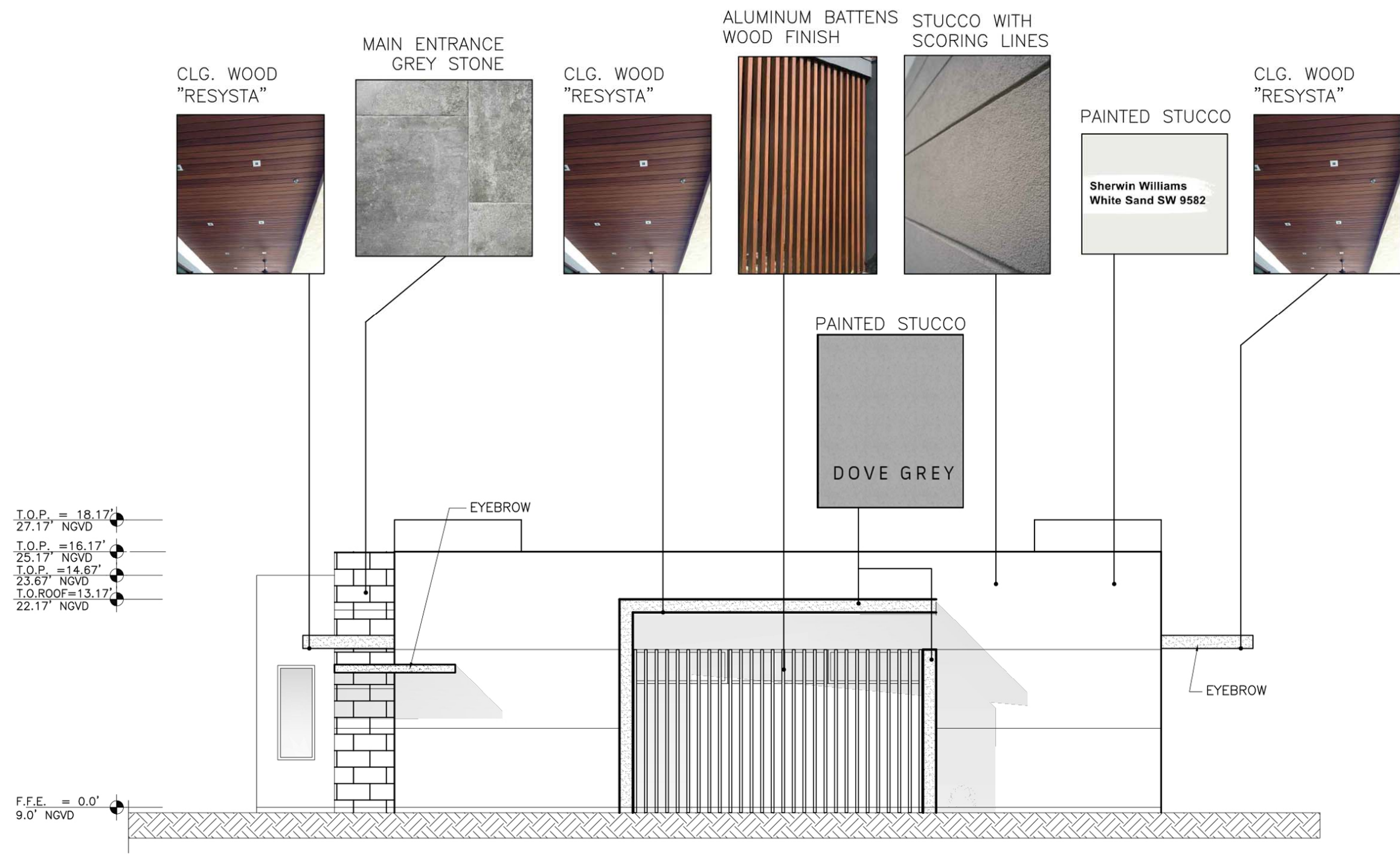
GREEN AREAS:
EXISTING = 11,795 SF
PROPOSED = 13,674 SF



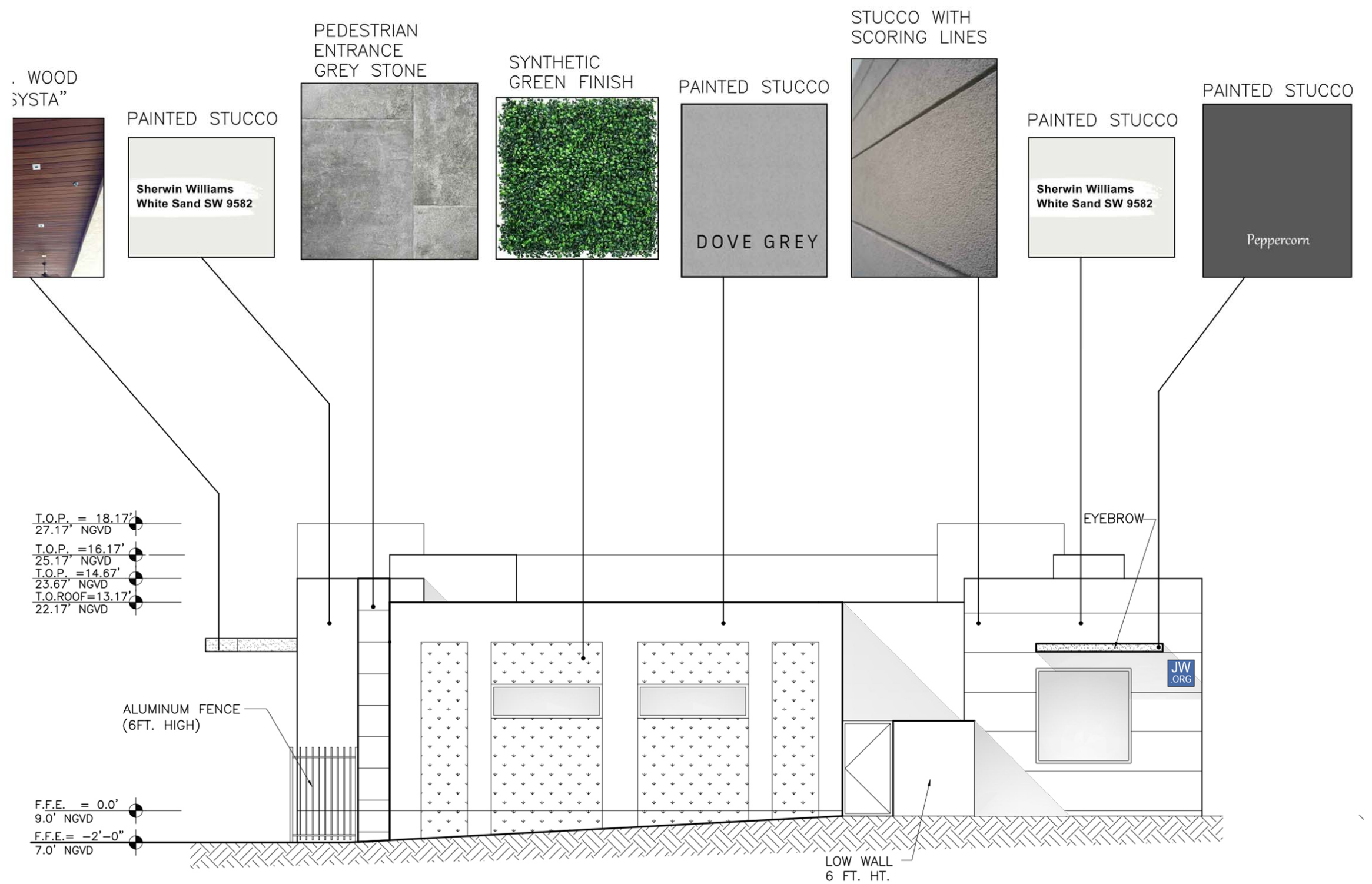
MATERIAL COLOR BOARD- SOUTH ELEVATION



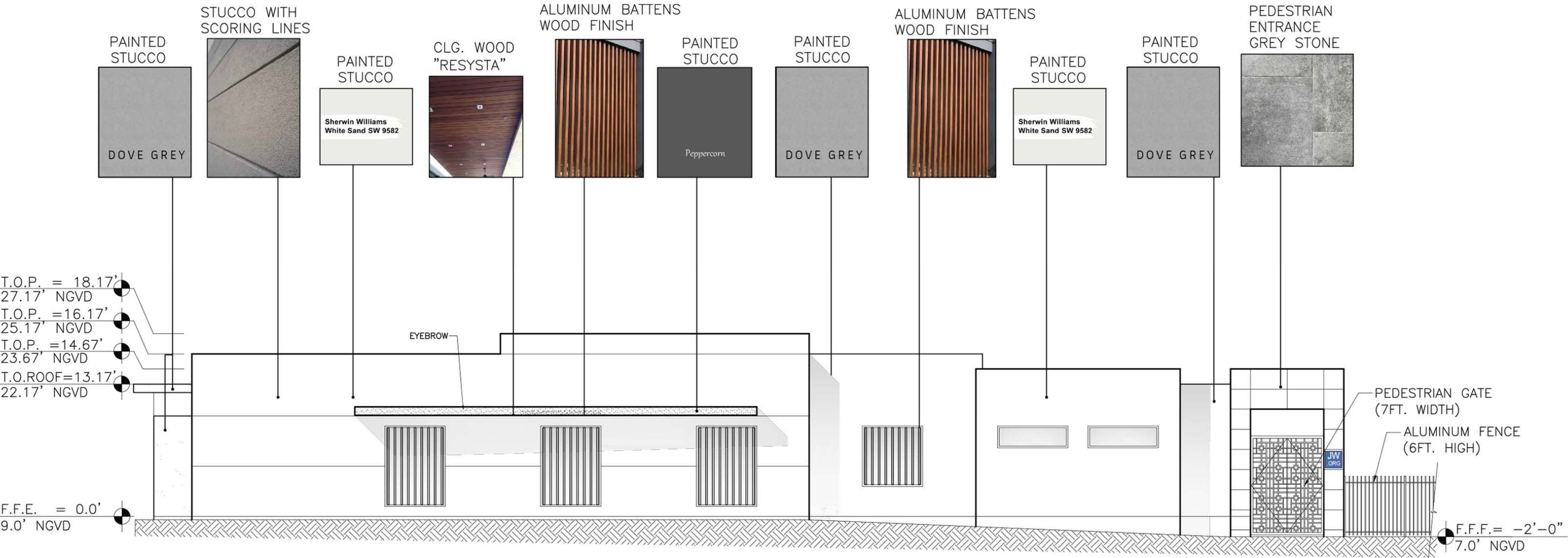
MATERIAL COLOR BOARD- EAST ELEVATION



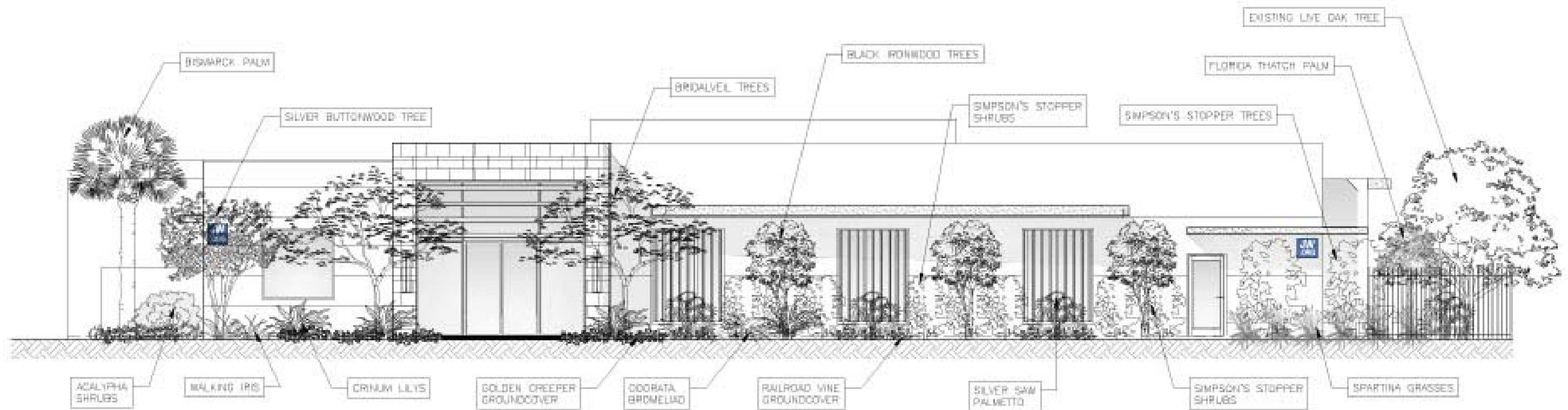
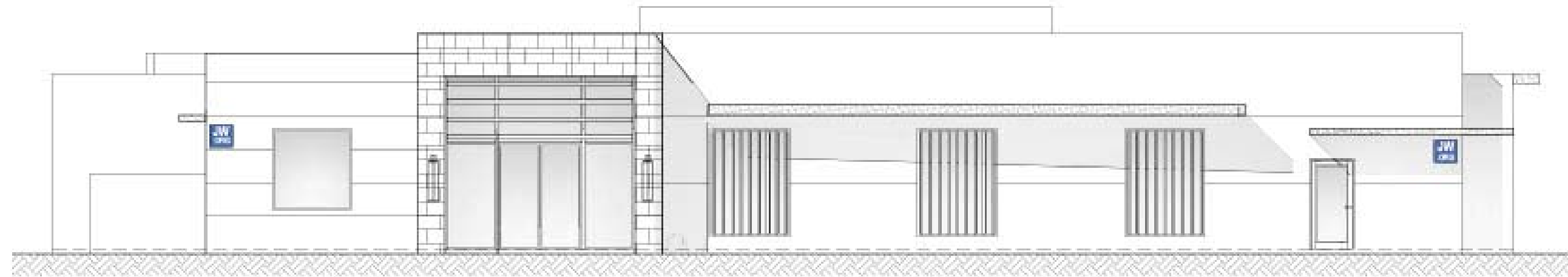
MATERIAL COLOR BOARD- WEST ELEVATION



MATERIAL COLOR BOARD- NORTH ELEVATION

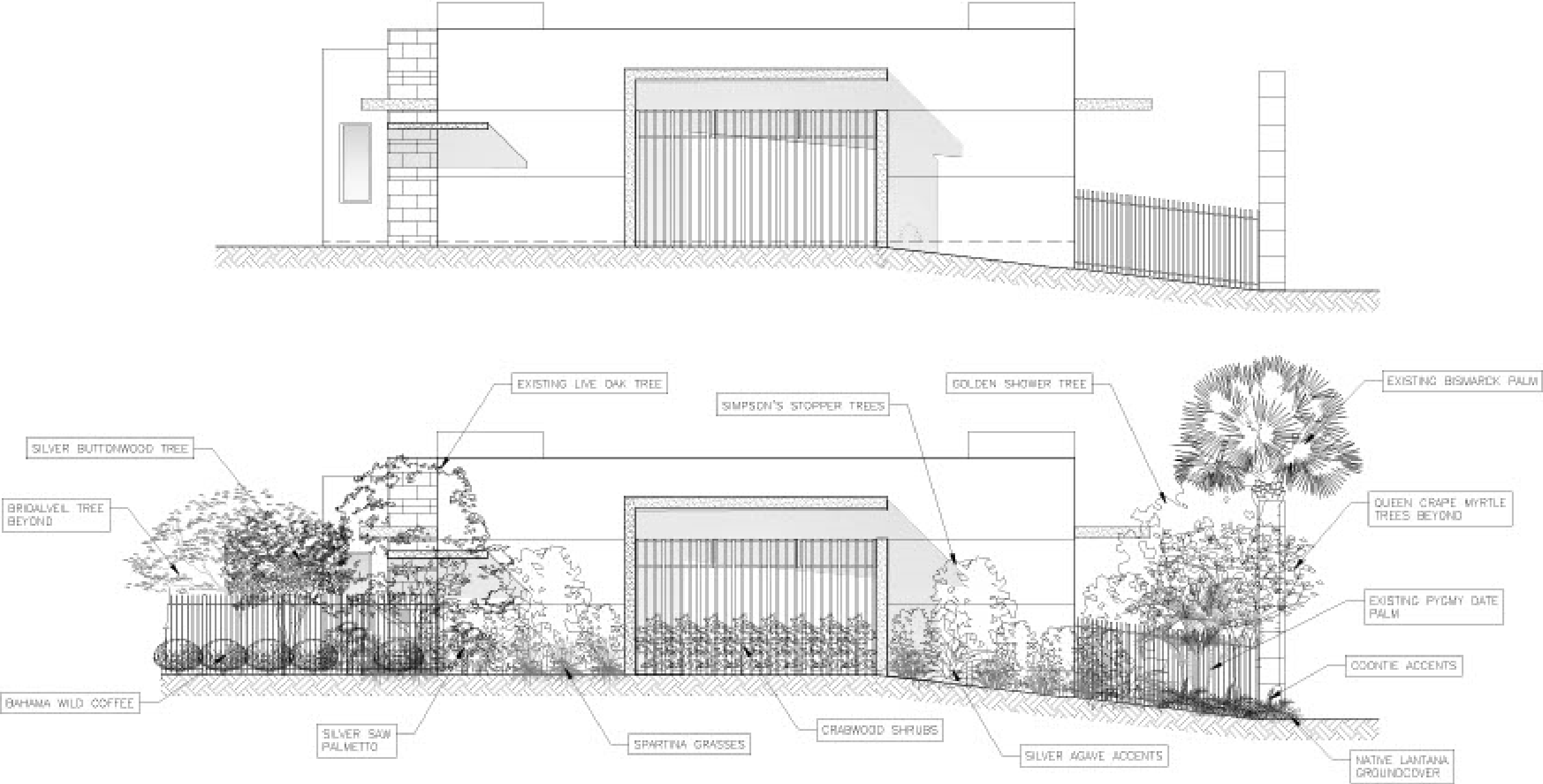


PROPOSED ELEVATIONS WITH & WITHOUT VEGETATION



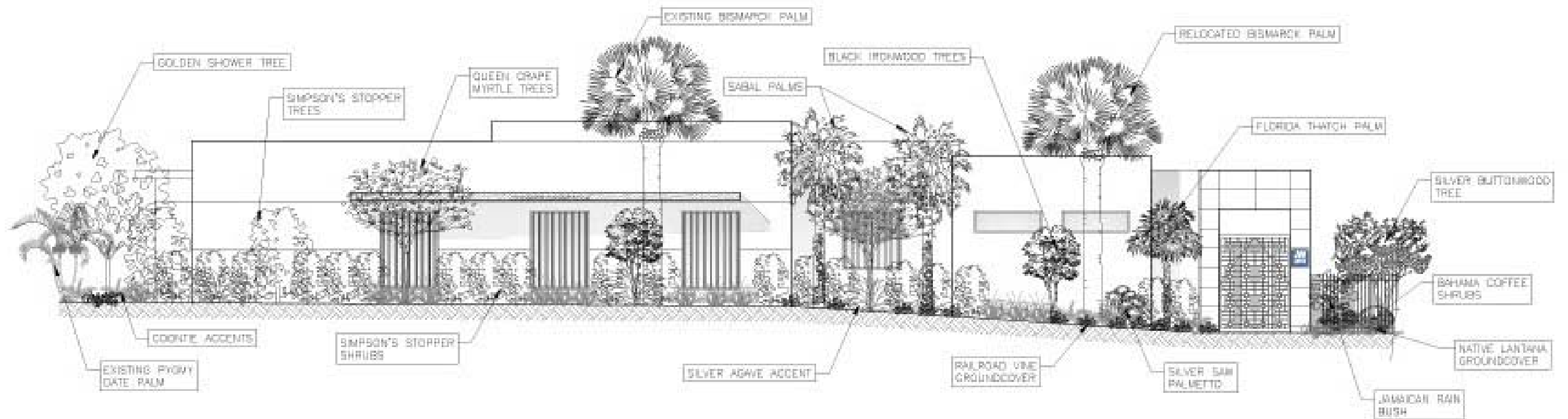
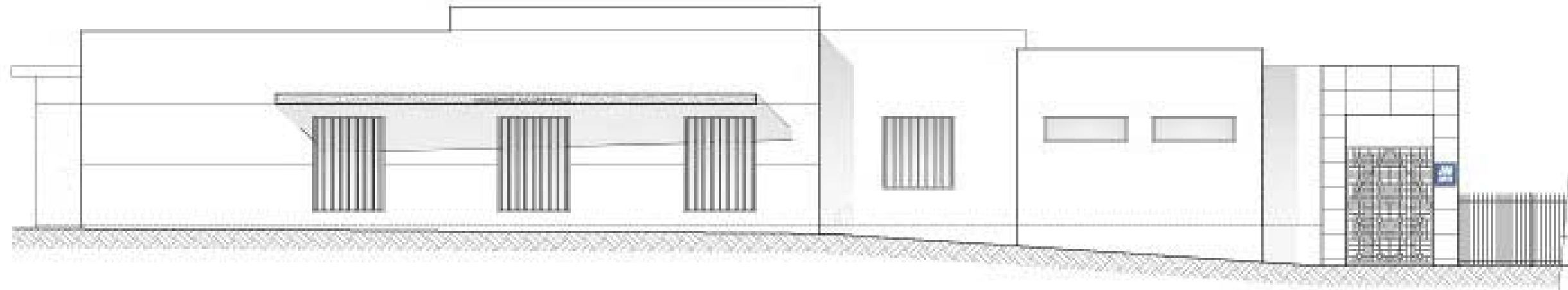
PROPOSED SOUTH ELEVATION W/ PERIMETER LANDSCAPING

PROPOSED ELEVATIONS WITH & WITHOUT **VEGETATION**



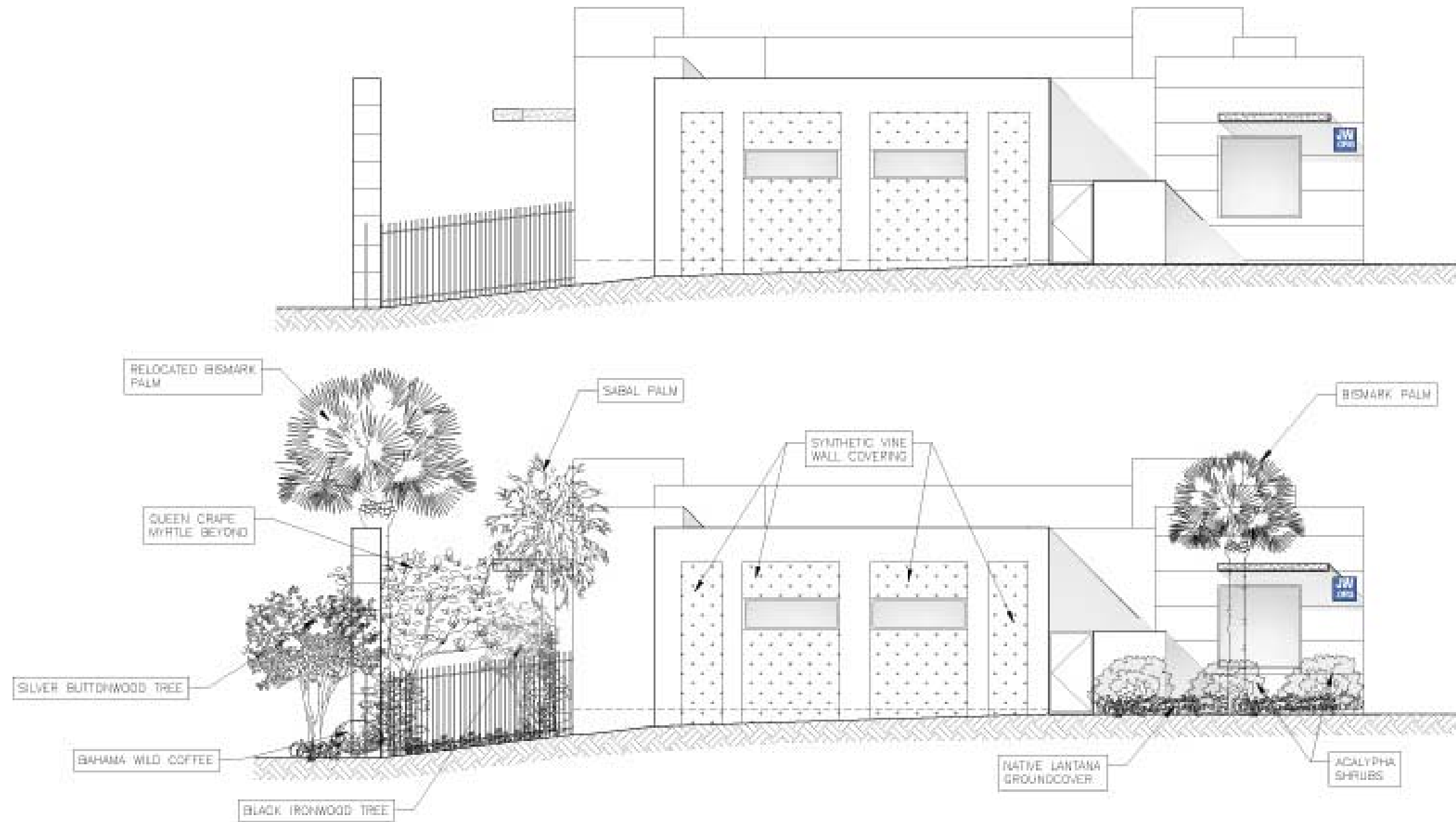
PROPOSED EAST ELEVATION W/ PERIMETER LANDSCAPING

PROPOSED ELEVATIONS WITH & WITHOUT VEGETATION



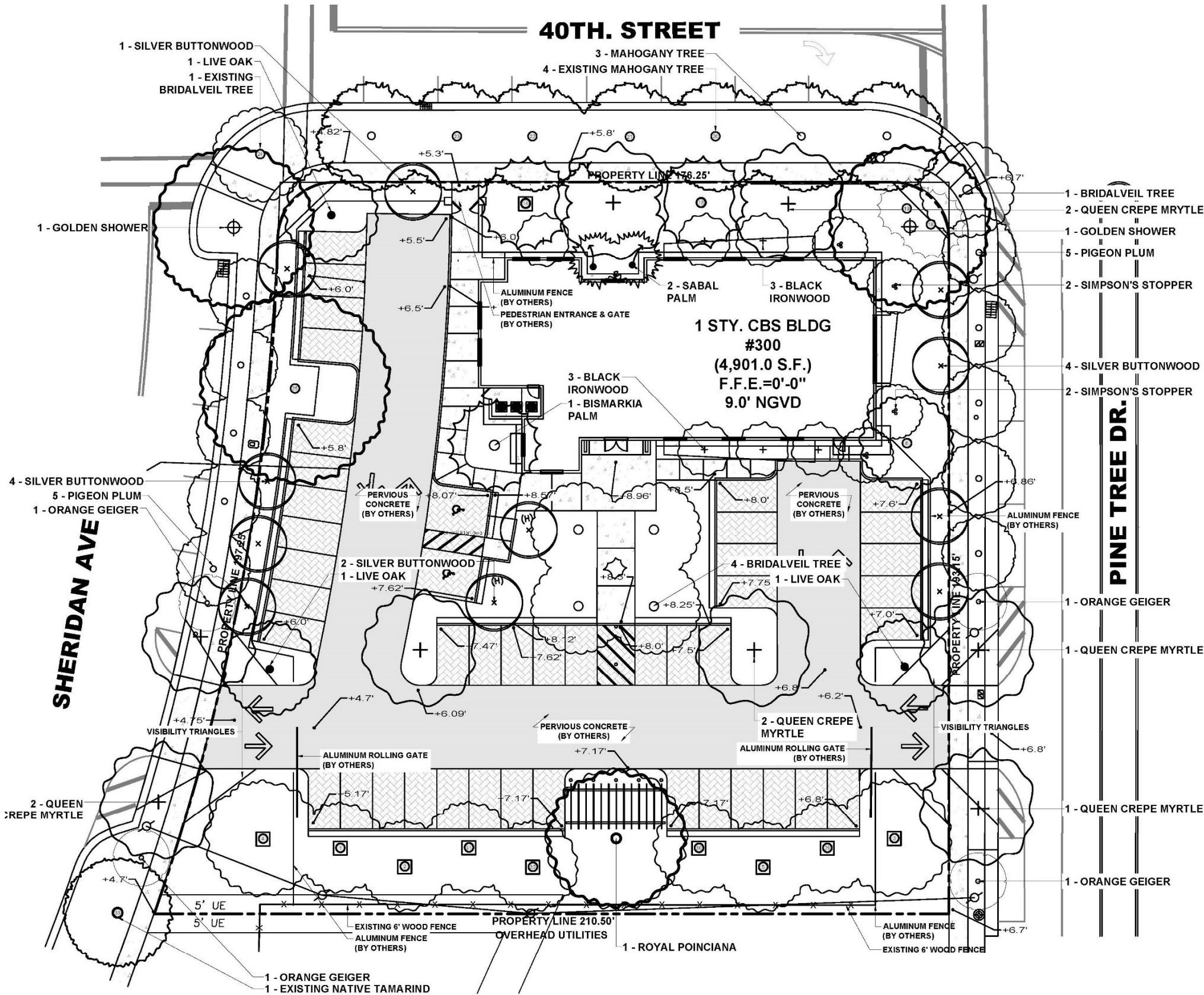
PROPOSED NORTH ELEVATION W/ PERIMETER LANDSCAPING

PROPOSED ELEVATIONS WITH & WITHOUT VEGETATION



PROPOSED WEST ELEVATION W/ PERIMETER LANDSCAPING

LANDSCAPE PROPOSAL



EXISTING TREE INVENTORY									
SURVEY NO.	SCIENTIFIC NAME	COMMON NAME	DBH (IN)	HT (FT.)	SP. (FT.)	CONDITION	SPECIMEN (YES OR NO)	NOTES	DISPOSITION
1	<i>Quercus virginiana</i>	Live Oak	12.74	30	15	FAIR	YES	LARGE BRANCH REMOVED	RELOCATE
2	<i>Quercus virginiana</i>	Live Oak	12.42	25	15	FAIR	YES		RELOCATE
3	<i>Quercus virginiana</i>	Live Oak	14.01	30	30	FAIR	YES	NICE STRUCTURE	RELOCATE
4	<i>Quercus virginiana</i>	Live Oak	14.97	30	30	FAIR	YES	NICE STRUCTURE	RELOCATE
5	<i>Quercus virginiana</i>	Live Oak	8.60	25	25	FAIR	NO	NICE STRUCTURE	RELOCATE
6	<i>Quercus virginiana</i>	Live Oak	11.46	22	20	FAIR	NO	UNSYMMETRICAL CANOPY	REMAIN
13	<i>Bismarckia nobilis</i>	Bismark Palm	14.00	27	25	FAIR	YES		REMAIN
14	<i>Bismarckia nobilis</i>	Bismark Palm	14.00	27	25	FAIR	YES		RELOCATE
18	<i>Phoenix roebelenii</i>	Pygmy Date Palm	4.14 & 4.14	14	18	FAIR	NO		REMAIN
19	<i>Phoenix roebelenii</i>	Pygmy Date Palm	4.14 & 4.14	12	16	POOR	NO		REMAIN
20	<i>Swietenia mahagoni</i>	Mahogany Tree	5.41	22	20	GOOD	NO		REMAIN
21	<i>Swietenia mahagoni</i>	Mahogany Tree	5.10	18	15	GOOD	NO		REMAIN
22	<i>Swietenia mahagoni</i>	Mahogany Tree	4.78	25	15	GOOD	NO		REMAIN
23	<i>Swietenia mahagoni</i>	Mahogany Tree	4.78	18	15	GOOD	NO		REMAIN
24	<i>Caesalpinia granadillo</i>	Bridalveil Tree	1.50	11	4	GOOD	NO		REMAIN
25	<i>Cassia fistula</i>	Golden Shower	32.48	35	50	FAIR	YES	CANOPY DIEBACK, MULTIPLE DEAD BRANCHES	REMAIN
29	<i>Quercus virginiana</i>	Live Oak	15.61	30	30	FAIR	YES		RELOCATE
30	<i>Quercus virginiana</i>	Live Oak	11.15	35	25	FAIR	NO		RELOCATE
31	<i>Quercus virginiana</i>	Live Oak	11.78	30	25	FAIR	NO		RELOCATE
32	<i>Quercus virginiana</i>	Live Oak	12.74	30	25	FAIR	YES	NICE STRUCTURE	RELOCATE
33	<i>Lysioloma latisiliquum</i>	Native Tamarind	4.00	16	12	GOOD	NO		REMAIN

02/08/2024 - JWORG			
OVERALL PROPOSED CANOPY PLANT LIST			
TREES AND PALMS			
Qty.	Botanical Name	Common Name	Specifications
1	<i>Bismarckia nobilis</i> 'Silver Select'	Bismark Palm	12' GW, Minimum
5	<i>Caesalpinia granadillo</i>	Bridalveil Tree	1 @ 12' HT. X 6' SP., 6' CT., 2" DBH & 4 @ 16' HT. x 8' SP., 6' CT., 4" DBH, Landscape Architect to Approve
2	<i>Cassia fistula</i>	Golden Shower	16' HT. x 8' SP., 4" DBH, Landscape Architect to Approve
10	<i>Coccoloba diversifolia</i>	Pigeon Plum	12' HT. X 6' SP., 6' CT., 2" DBH, Landscape Architect to Approve
4	<i>Cordia sebestena</i>	Orange Geiger	12' HT. X 6' SP., 6' CT., 2" DBH, Landscape Architect to Approve
11	<i>Conocarpus erectus</i> 'Sericeus'	Silver Buttonwood	12' HT. X 6' SP., 6' CT., 2" DBH, Landscape Architect to Approve
1	<i>Delonix regia</i>	Royal Poinciana	16' HT. x 8' SP., 6' CT., 4" DBH, Landscape Architect to Approve
6	<i>Krugiodendron ferreum</i>	Black Ironwood	10' HT. X 6' SP., 4' CT., 2" DBH, Landscape Architect to Approve
8	<i>Lagerstroemia speciosa</i>	Queen Crepe Myrtle	16' HT. x 8' SP., 6' CT., 4" DBH, Landscape Architect to Approve
4	<i>Myrcianthes fragrans</i>	Simpson's Stopper	10' HT. X 6' SP., 4' CT., 2" DBH, Landscape Architect to Approve
3	<i>Quercus virginiana</i>	Live Oak	16' HT. x 8' SP., 6' CT., 4" DBH, Landscape Architect to Approve
2	<i>Sabal palmetto</i>	Character Sabal Palm	10'-22' CT., Staggered Heights, Crooked Trunk, Curved Trunk, Landscape Architect to Approve
3	<i>Swietenia mahagoni</i>	Mahogany Tree	16' HT. x 8' SP., 6' CT., 4" DBH, Landscape Architect to Approve

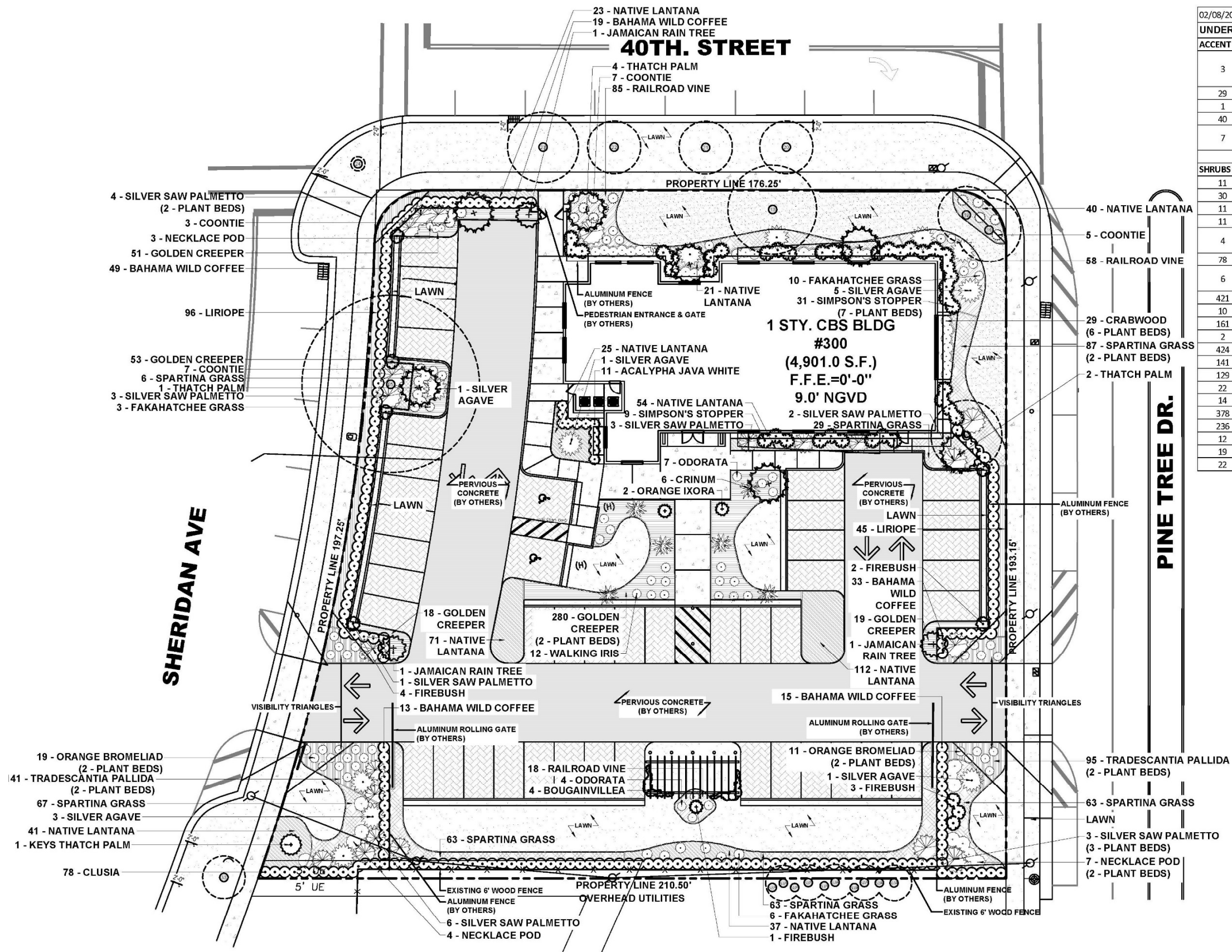
LEGEND	
⊕	REMAIN
⊗	RELOCATION LOCATION

FINAL SUBMITTAL: 07.10.2023

CANOPY PLANTING PLAN

SCALE: 1/32" = 1'-0"





02/08/2023 - JWORG

UNDERSTORY PLANT LIST

ACCENT TREES AND PALMS

3	<i>Brya ebenus</i>	Jamaican Rain Tree	25 Gal., 8'-10' Height, Standard, Landscape Architect to Approve To Set In Field
29	<i>Gymnanthes lucida</i>	Crabwood	48" HT x 36" SP
1	<i>Leucothrinax morrisii</i>	Keys Thatch Palm	25 Gal.
40	<i>Myrcianthes fragrans</i>	Simpson's Stopper	5' HT x 3' SP, 15 Gallon
7	<i>Thrinax radiata</i>	Thatch Palm	2 @ 8' Overall Height, 2 @ 12' Overall Height, 3 @ 10' Overall Height

SHRUBS AND GROUND COVERS

11	<i>Acalypha wilkesiana 'Java White'</i>	Acalypha	15 Gal., 4'-5' Overall Height, Full to Base
30	<i>Aechmea blanchetiana</i>	Orange Bromeliad	3 Gal., Bullis Bromeliads
11	<i>Agave sp.</i>	Silver Agave	15 Gal., 36" HT x 36" SP
11	<i>Alcantarea odorata</i>	Odorata	7 Gal., 24" HT x 24" SP
4	<i>Bougainvillea sp.</i>	Bougainvillea	25 Gal., 7'-8' Overall Height, Trellis, Fuchsia Color, Full to Base
78	<i>Clusia guttifera</i>	Clusia	96" HT x 36" SP
6	<i>Crinum augustum 'Queen Emma'</i>	Queen Emma Crinum Lily	15 Gal., 48" HT x 36" SP, Individual Plant without Pups
421	<i>Erondea littoralis</i>	Golden Creeper	1 Gal., 12" HT x 12" SP
10	<i>Hamelia patens</i>	Firebush	7 Gal., 36" HT x 36" SP
161	<i>Ipomoea pes-caprae</i>	Railroad Vine	1 Gal., 12" HT x 12" SP
2	<i>Ixora 'Orange Sherbert'</i>	Orange Ixora	7 Gal., 36" HT x 36" SP
424	<i>Lantana depressa</i>	Florida Lantana	1 Gal., 12" HT x 12" SP
141	<i>Liriope muscari</i>	Liriope	1 Gal., 12" HT x 12" SP
129	<i>Psychotria ligustrifolia</i>	Bahama Wild Coffee	7 Gal., 36" HT x 36" SP
22	<i>Serenoa repens 'cinerea'</i>	Silver Saw Palmetto	25 Gal., 4' Overall Height
14	<i>Sophora tomentosa</i>	Necklace Pod	7 Gal., 36" HT x 36" SP
378	<i>Spartina bakeri</i>	Spartina Grass	3 Gal., 36" HT x 24" SP
236	<i>Tradescantia pallida</i>	Purple Creeper	1 Gal.
12	<i>Trimezia martinicensis</i>	Walking Iris	3 Gal., 36" HT x 36" SP
19	<i>Tripsacum floridana</i>	Dwarf Fakahatchee Grass	3 Gal., 36" HT x 24" SP
22	<i>Zamia pumila</i>	Coontie	7 Gal., 18" HT x 18" SP

FINAL SUBMITTAL: 07.10.2023

UNDERSTORY PLANTING PLAN

SCALE: 1/32" = 1'-0"





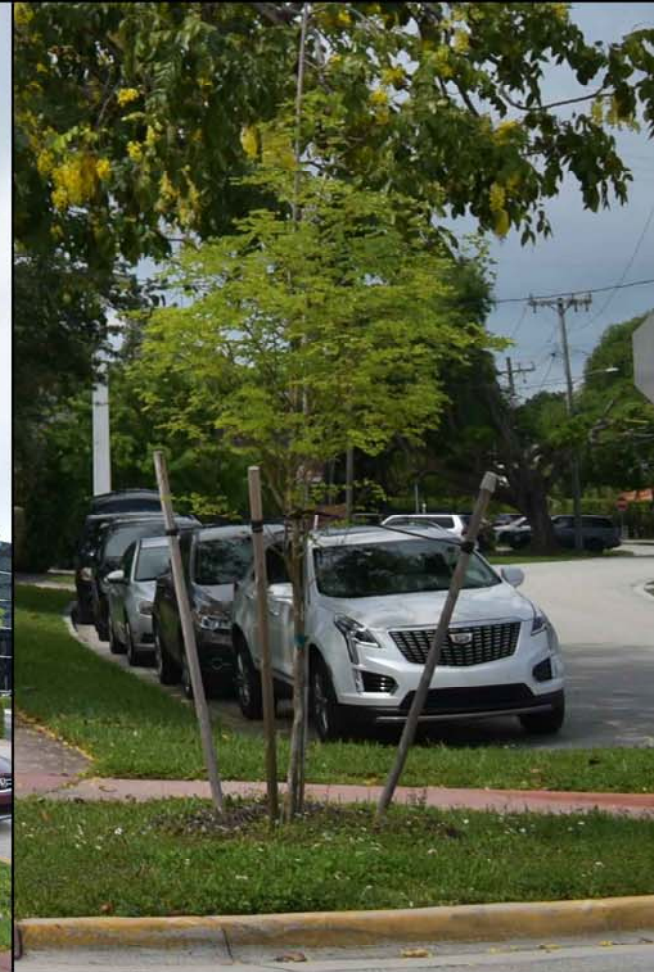
EXISTING LIVE OAK



EXISTING GOLDEN SHOWER



EXISTING MAHOGANY TREE



EXISTING BRIDALVEIL TREE



EXISTING NATIVE TAMARIND



SCULPTURAL SEAGRAPE TREE



SILVER BUTTONWOOD



ROYAL POINCIANA



BLACK IRONWOOD



QUEEN CREPE MYRTLE



MULTI SIMPSON'S STOPPER



EXISTING PYGMY DATE PALM



EXISTING BISMARK PALM



EXISTING ROYAL PALM



CHARACTER SABAL PALM



THATCH PALM



JAMAICAN RAIN TREE



ACALYPHA



JAMAICAN CAPER



HORIZONTAL COCOPLUM



CLUSIA



CRABWOOD



FIREBUSH



SIMPSON'S STOPPER



BAHAMA WILD COFFEE



SILVER SAW PALMETTO



COONTIE



SEA OXEYE DAISY



PHILODENDRON WILSONI



SILVER AGAVE



NECKLACE POD



MUHLY GRASS



SPARTINA GRASS



DWARF FAKAHATCHEE GRASS



PERRENIAL PEANUT



GOLDEN CREEPER



RAILROAD VINE



FLORIDA LANTANA



LIRIOPE



PURPLE CREEPER

RENDERINGS

VIEW # 1: SHERIDAN AVENUE ENTRANCE



VIEW # 2: SHERIDAN AVENUE & W. 40TH STREET CORNER



VIEW # 3: PINE TREE DRIVE & W 40TH STREET CORNER



VIEW # 2: W. 40TH STREET
PEDESTRIAN ENTRANCE



JW CONGREGATION OF
SOUTH MIAMI BEACH INC.

300 WEST 40 STREET
MIAMI BEACH FL. 33140

