

3D ELEVATION - FRONT BIRDS EYE VIEW FACING WEST

SCALE: N.T.S.

REVISIONS / SUBMISSIONS	
△	
△	
△	
△	
△	
△	
△	
△	
△	
△	

PASH PLACE ONE LLC 6650 SHEFFIELD LANE MIAMI BEACH, FL 33141	
3D RENDERING	
FRONT BIRDS EYE VIEW FACING WEST	

OWNER

--

FERNANDO WONG OUTDOOR LIVING DESIGN
--

DRAWN BY: JAN
CHECKED BY: FW
DATE: FEBRUARY 8, 2024
SCALE: N.T.S.

--

R-109



3D ELEVATION - BIRDS EYE VIEW FACING SOUTH

SCALE: N.T.S.

REVISIONS / SUBMISSIONS	
△	
△	
△	
△	
△	
△	
△	
△	
△	
△	

PASH PLACE ONE LLC 6650 SHEFFIELD LANE MIAMI BEACH, FL 33141	
3D RENDERING BIRDS EYE VIEW FACING SOUTH	

OWNER

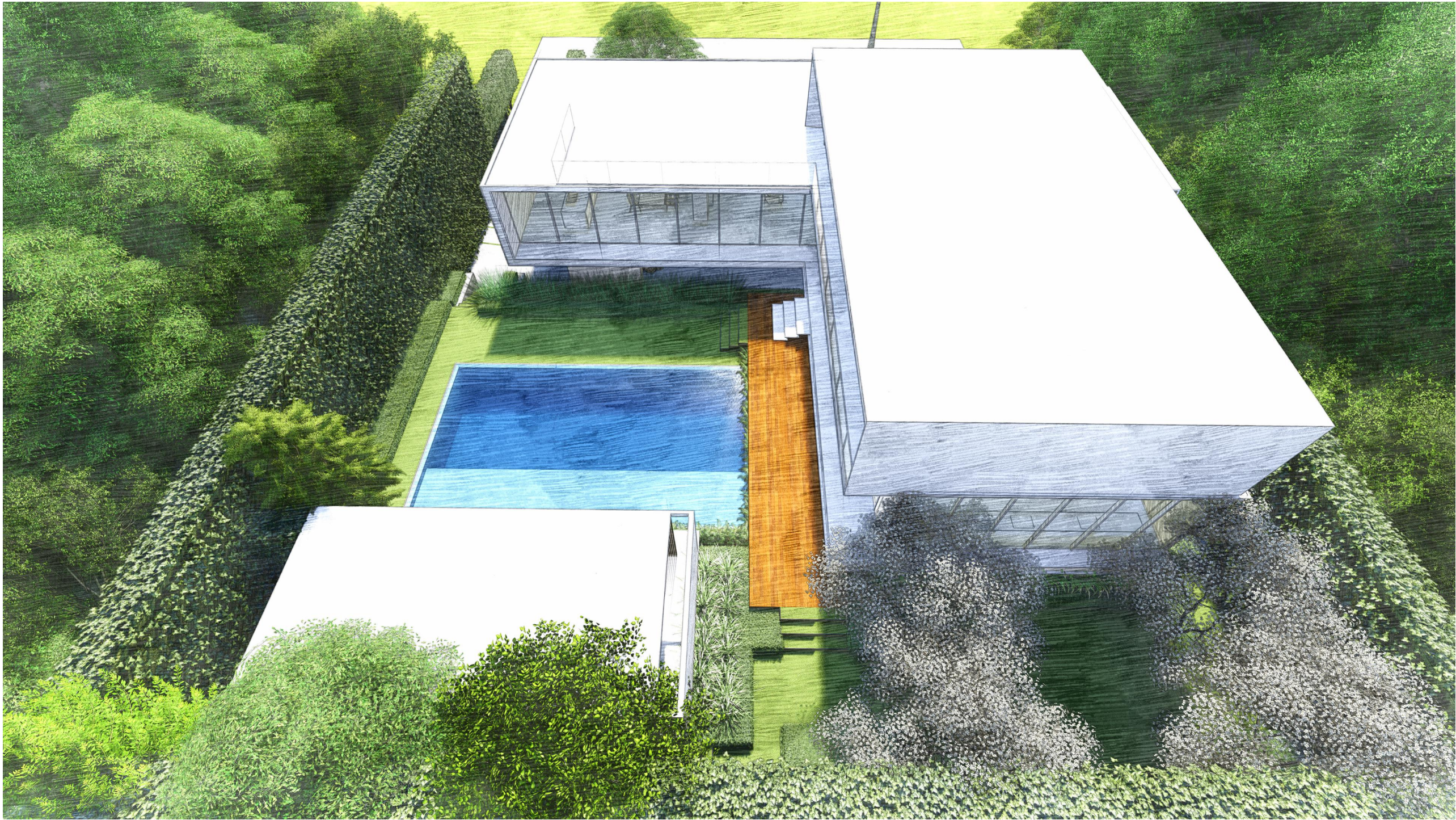
--

FERNANDO WONG OUTDOOR LIVING DESIGN
--

DRAWN BY: JAN
CHECKED BY: FW
DATE: FEBRUARY 8, 2024
SCALE: N.T.S.

--

R-110



3D ELEVATION - BIRDS EYE VIEW FACING EAST

SCALE: N.T.S.

REVISIONS / SUBMISSIONS	
△	
△	
△	
△	
△	
△	
△	
△	
△	
△	
△	

PASH PLACE ONE LLC 6650 SHEFFIELD LANE MIAMI BEACH, FL 33141	
3D RENDERING BIRDS EYE VIEW FACING EAST	

OWNER

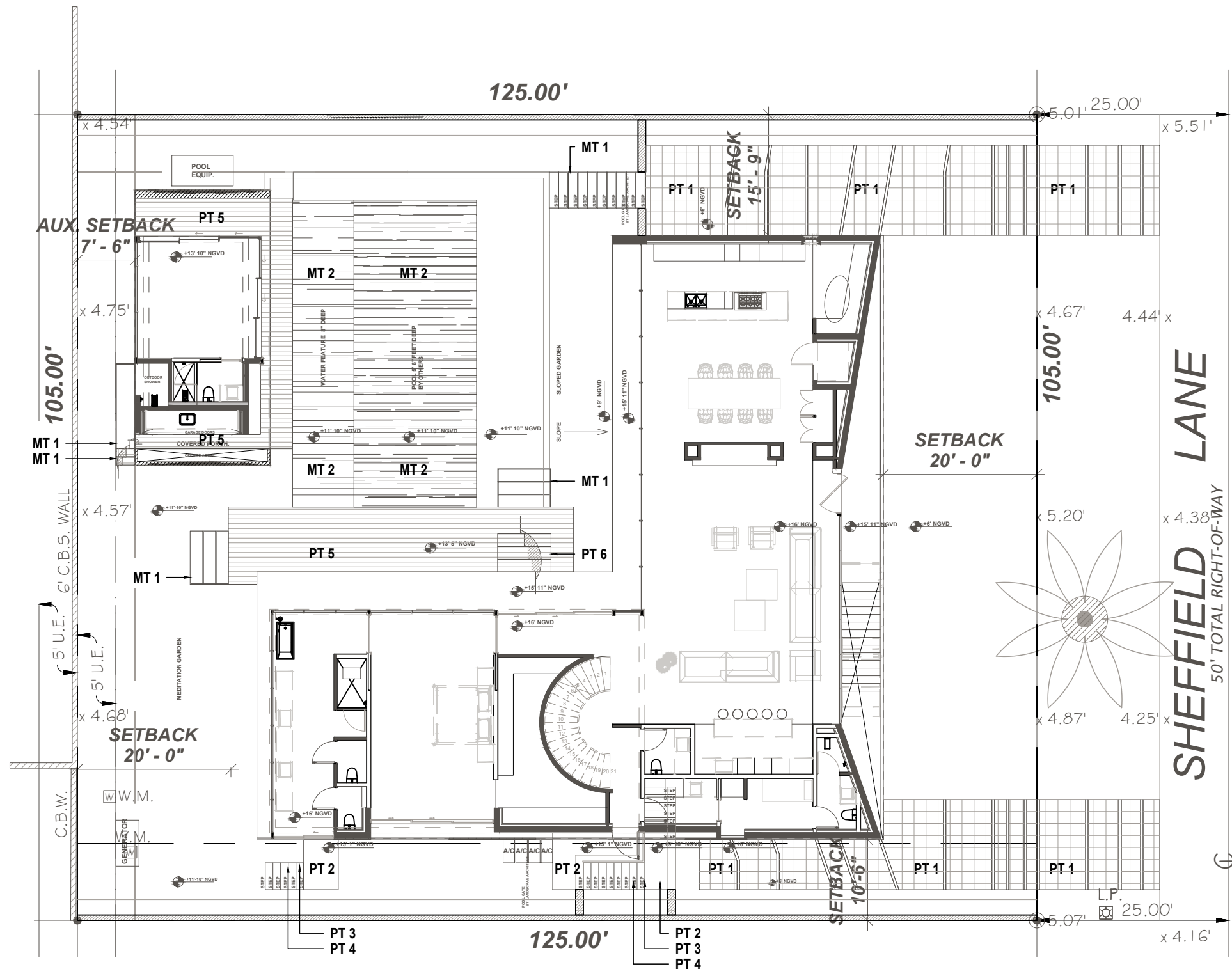
--

FERNANDO WONG OUTDOOR LIVING DESIGN
--

DRAWN BY: JAN
CHECKED BY: FW
DATE: FEBRUARY 8, 2024
SCALE: N.T.S.

--

R-111



HARDSCAPE PLAN

SCALE: 1/16" = 1'-0"

MATERIAL LEGEND:

PAVING TYPE	MATERIAL	DIMENSION	COLOR	APPLICATION	NOTES
PT 1	GRANITELOCK PAVER	12" X 12" X 2-3/8"	STERLING GRAY	DRIVEWAY	SAND SET ON 4" LIMEROCK BASE
PT 2	LIMESTONE	24" X 24" X 3 CM	NATURAL	STAIR LANDING	MUDSET ON STAIRS GROUTED & SEALED
PT 3	LIMESTONE	6.5" X 48" X 2 CM	NATURAL	STAIR RISER	MUDSET ON STAIRS GROUTED & SEALED
PT 4	LIMESTONE	12" X 48" X 3 CM	NATURAL	STAIR TREAD	MUDSET ON STAIRS GROUTED & SEALED
PT 5	IPE	6" PLANKS	NATURAL	REAR DECK	
PT 6	HARDWOOD	18" X 84" X 3" THICK	NATURAL	FLOATING STEPS	
MT 1	CORTEN STEEL	1" THICK	BLACK	SOD STEPS	
MT 2	PEBBLE TECH		MIDNIGHT BLUE	POOL FINISH	



PT-1



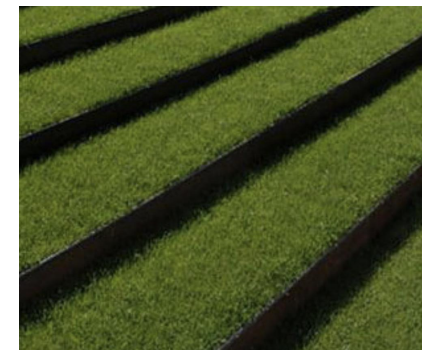
PT-2, PT-3 & PT-4



PT-5



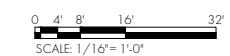
PT-6



MT-1



MT-2

[illegible]

PASH PLACE ONE LLC
6650 SHEFFIELD LANE

MIAMI BEACH, FL 33141

HARDSCAPE PLAN

OWNER

FERNANDO WONG
OUTDOOR LIVING DESIGN

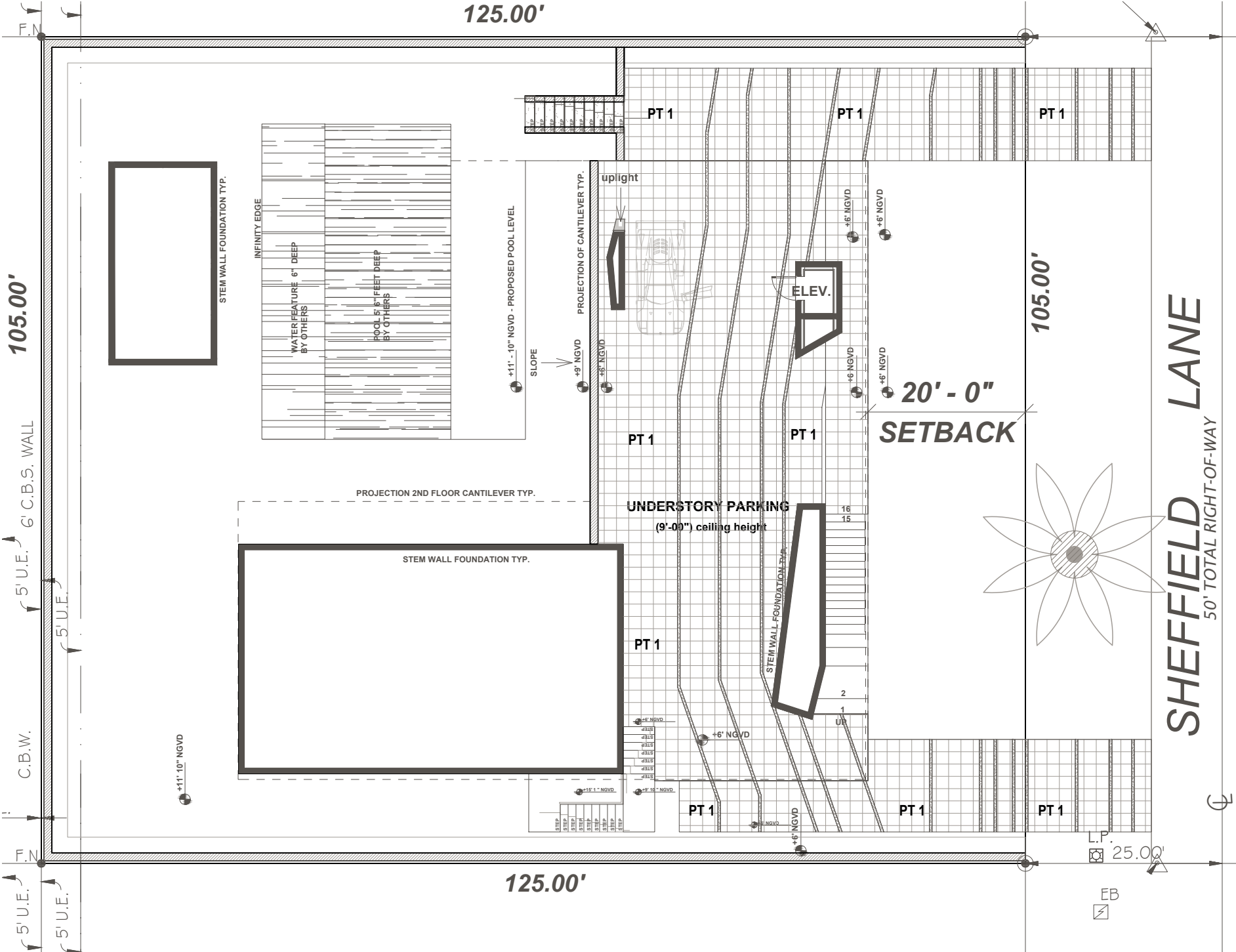
DRAWN BY: JAN

CHECKED BY: FW

DATE: FEBRUARY 8, 2024

SCALE:

H-100



MATERIAL LEGEND:

PAVING TYPE	MATERIAL	DIMENSION	COLOR	APPLICATION	NOTES
PT 1	GRANITELOCK PAVER	12" X 12" X 2-3/8"	STERLING GRAY	DRIVEWAY	SAND SET ON 4" LIMEROCK BASE
PT 2	LIMESTONE	24" X 24" X 3 CM	NATURAL	STAIR LANDING	MUDSET ON STAIRS GROUTED & SEALED
PT 3	LIMESTONE	6.5" X 48" X 2 CM	NATURAL	STAIR RISER	MUDSET ON STAIRS GROUTED & SEALED
PT 4	LIMESTONE	12" X 48" X 3 CM	NATURAL	STAIR TREAD	MUDSET ON STAIRS GROUTED & SEALED
PT 5	IPE	6" PLANKS	NATURAL	REAR DECK	
PT 6	HARDWOOD	18" X 84" X 3" THICK	NATURAL	FLOATING STEPS	
MT 1	CORTEN STEEL	1" THICK	BLACK	SOD STEPS	
MT 2	PEBBLE TECH		MIDNIGHT BLUE	POOL FINISH	



PT-1



PT-2, PT-3 & PT-4



PT-5



PT-6



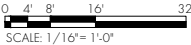
MT-1



MT-2

HARDSCAPE PLAN - UNDERSTORY AREA

SCALE: 1/16" = 1'-0"



REVISIONS / SUBMISSIONS

PASH PLACE ONE LLC 6650 SHEFFIELD LANE MIAMI BEACH, FL 33141	HARDSCAPE PLAN UNDERSTORY AREA
--	-----------------------------------

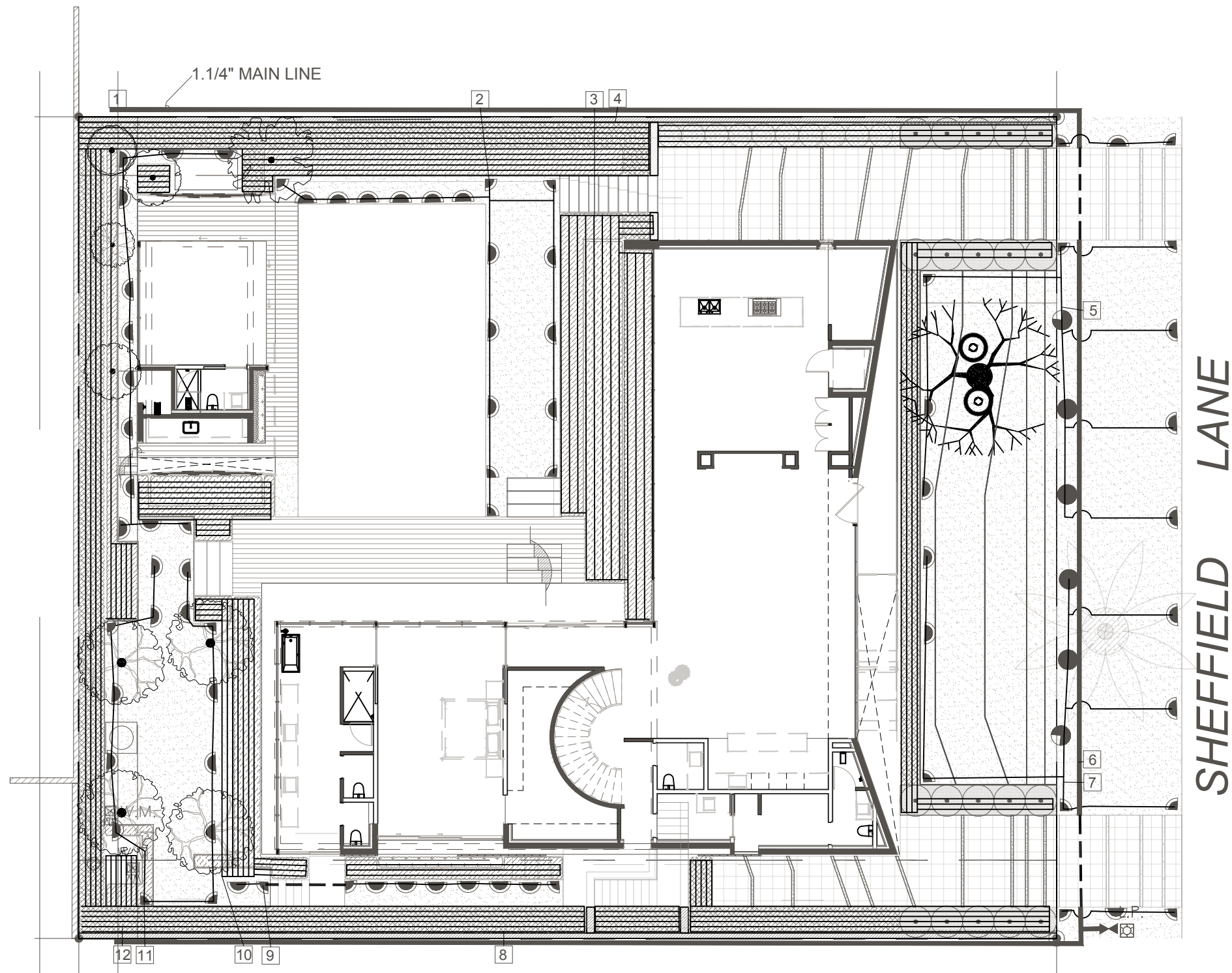
OWNER

--

FERNANDO WONG OUTDOOR LIVING DESIGN
--

DRAWN BY: JAN
CHECKED BY: FW
DATE: FEBRUARY 8, 2024
SCALE: 1/16" = 1'-0"

H-101



IRRIGATION SCHEDULE:

IRRIGATION PLAN

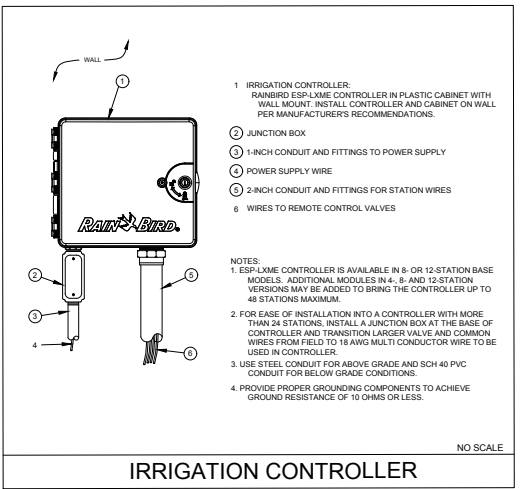
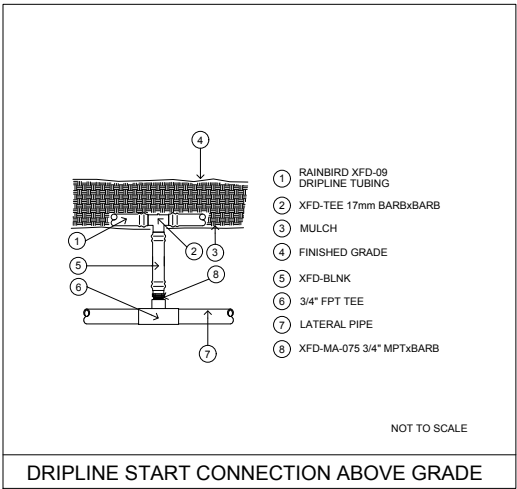
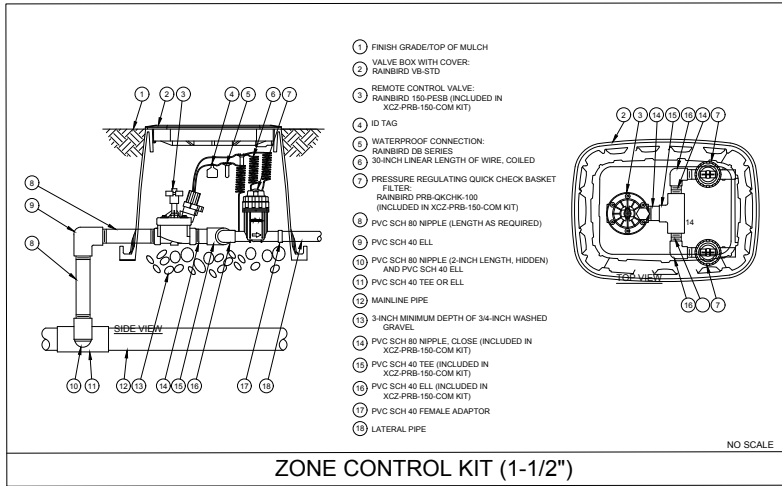
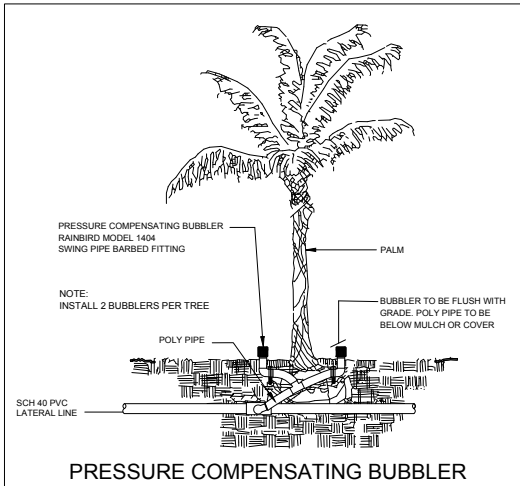
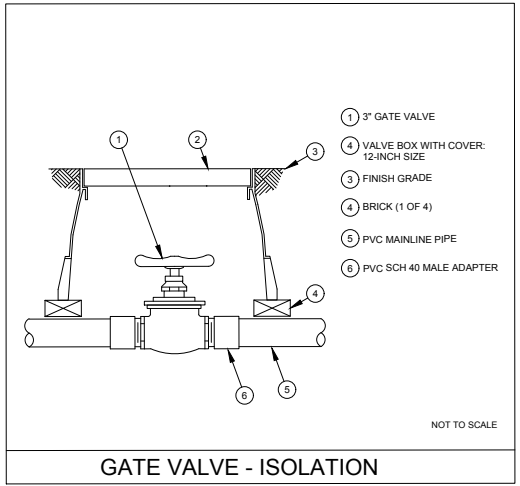
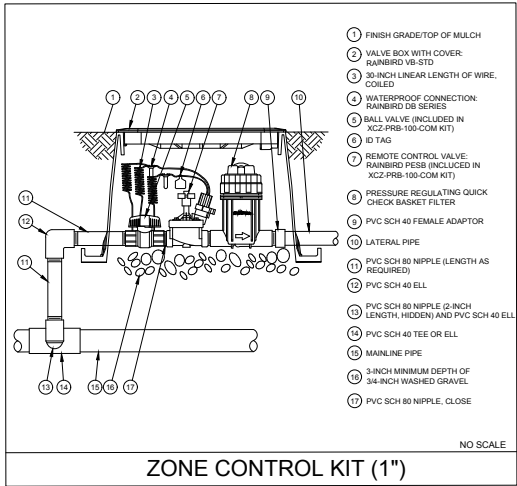
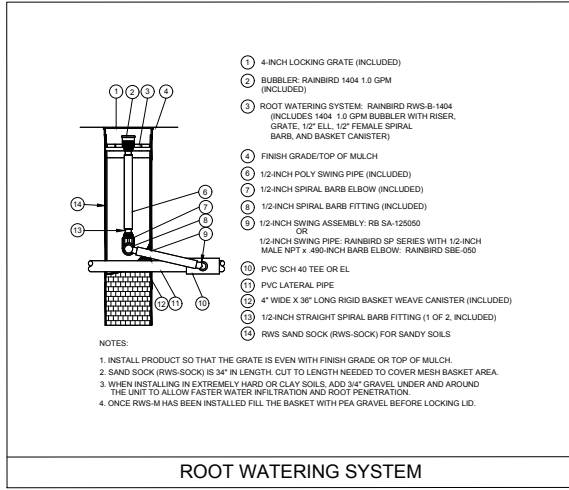
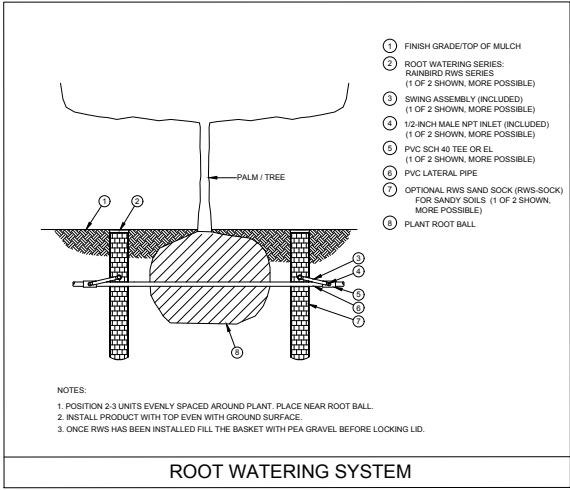
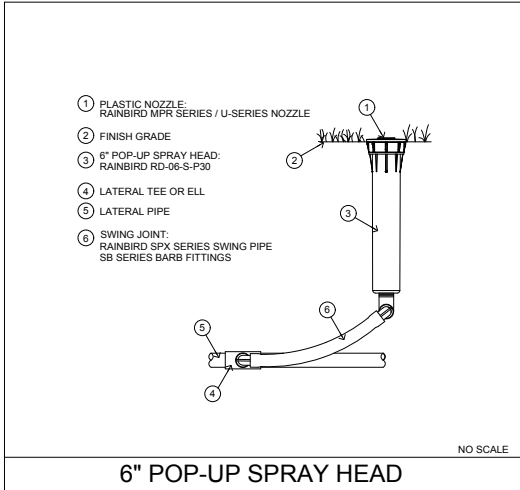
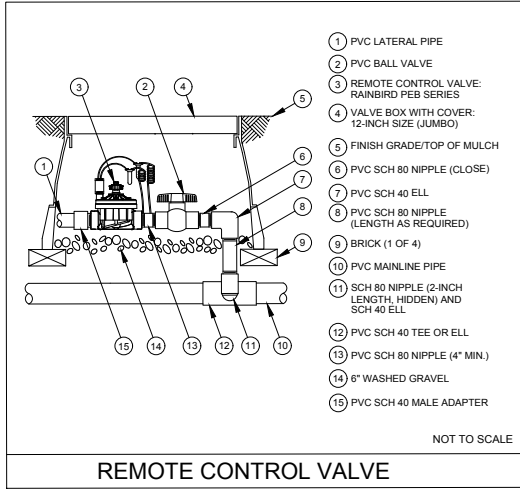
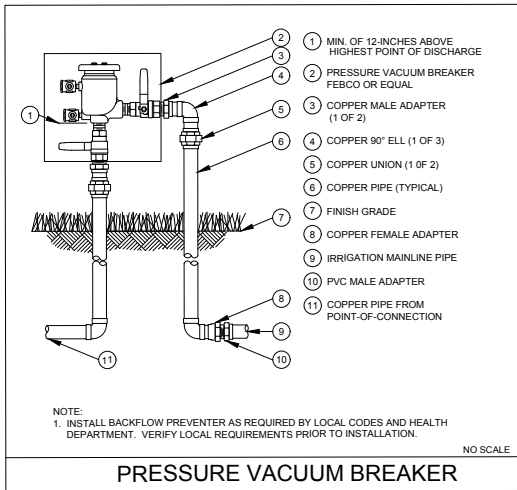
E

D

C

B

A



REVISIONS / SUBMISSIONS

PASH PLACE ONE LLC
6650 SHEFFIELD LANE
MIAMI BEACH, FL 33141

IRRIGATION DETAILS & NOTES

OWNER

FERNANDO WONG
OUTDOOR LIVING DESIGN

DRAWN BY: JAN
CHECKED BY: FW
DATE: FEBRUARY 8, 2024
SCALE:

CAST MR-11 Bullet (CBL5CB)
Product Information

CAST Classic MR-11 Bullet - Ideal for Spot and Niche Applications



- Description:**
This rugged copper and solid MR-11 fixture can be stake or bracket mounted.
- Features:**
- Heavy-gauge copper shroud with solid brass locking ring
 - Solid bronze knuckle
 - Bronze stake
 - Knuckle adjusts to any angle
 - Convex lens to prevent mineral build-up
 - Pre-wired with 25' tin-coated No-Ox® marine grade wire
 - High-temp socket with solid nickel contacts
 - Spider Splice® ready

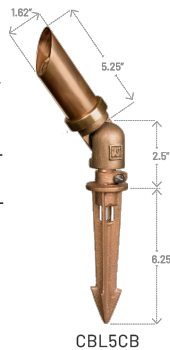
Uses:
Suitable for both uplighting and downlighting plant material, structures and architectural features. A wide range of lamp wattages and beam angles; as well as optional lenses and louvers provide maximum lighting design flexibility.

Construction:
Heavy-gauge copper shroud; solid bronze knuckle; bronze stake; borosilicate convex lens; ceramic socket with solid nickel contacts and stainless steel spring; solid brass retaining ring; 25' tin-coated #16-2 No-Ox® marine-grade wire.

Dimensions:
8" x 1.5" fully extended
Stake: 6.5"

Specifications:
Lamp: 12v MR-11 (35w max.) Not included.

Listing:
U.L. 1838 Listed Low Voltage Luminaire for wet locations



CBL5CB

CAST LED Tree Light (CTLED141)
Product Information

CAST LED Tree Light - 3 Beam Spreads & 2 Light Levels in a Single Fixture



High/Low switch changes light level from 157 to 269 lumens.

Module secured to fixture body for optimal heat management. LEDSense™ technology ensures temperature control. Optics easily exchanged to allow 41°, 21°, and 12° beam spreads.

Dimensions & Weight:
Body and Shroud: 2.5" x 9" fully extended; Weight: 5 lb.

LED Specifications:

- LED Light Source: 3 warm white LEDs.
- Color: 2,720°K; 81 CRI (typical)
- Input Voltage: 10V to 22V AC or DC
- Input Power (at 12V): Low setting (AC): 4.1 Watts; 0.93 pf
- Input Power (at 12V): High setting (AC): 5.86 Watts; 0.93 pf
- LED Output Fixture (High/Low) (at 12V): 269/157 lm
- Operating Temperature Range: -40° C to 55° C
- Life (L70): 60,500 hrs.
- Reverse Polarity Protection: Yes, polarity independent
- Halogen Equivalent Watts: Low 20W / High 35W

- Description:**
This LED fixture combines the rugged solid bronze and copper construction of the CAST Tree Light with the industry's most advanced LED module.
- Features:**
- Replaceable LED module (MR-16 size) thermally bonded to solid bronze body for optimal heat dissipation.
 - Replaceable optics for 41° (included), 21°, and 12° (sold separately).
 - LEDSense™ technology controls forward current to compensate for conditions of extreme ambient heat.
 - Accepts input voltages between 10V and 24V AC for maximum system design flexibility.
 - Automatic recognition and compensation for varied magnetic and electronic transformer types.
 - Dimmable with standard low-voltage phase dimmers
 - Warm white color temperature (2,720°K) and high color rendering index (81 CRI) that closely matches incandescent lighting.
 - L70 of 60,500 hours.
 - UL/CSA/RoHS recognized, FCC Class A Conducted and Radiated Emissions compliant.
 - Solid Bronze Canopy Mount
- Uses:**
Provides a highly energy efficient LED light source that projects an evenly distributed beam with warm color temperature. Brightness and beam distribution are comparable to incandescent models of 15w and 25w. Fully rotatable extra-long shroud enables excellent glare control.

- Component Details: No electrolytic capacitors in drive circuit; all components rated for high ambient temperatures
 - Emission Standards: FCC Class A Conducted and Radiated
 - UL recognized; RoHS compliant
- Construction:**
Body and Canopy Mount: Sand-cast solid bronze
Shroud: Thick-walled copper
Plug: High-temperature MR-16 plug with protective conductive grease
Optional Optics: (T-8 Torx Screwdriver Needed)
C10139: 21° Medium Optic (Set of 3)
C10003: 12° Narrow Optic (Set of 3)
Tree Mount Hardware Kit (CTREEH1) Not Included.

LIGHTING LEGEND:

	SYMBOL	FIXTURE	QUANTITY	TYPE OF MOUNT
A		CAST LED BULLET LIGHT - UP LIGHT CBLED141 - ATTACHED WITH TREE STRAP	02	TREE STRAP
B		CAST MR-16 BULLET - UP LIGHT CBL1CB - STAKE MOUNTED	67	STAKE
C		CAST LED TREE LIGHT - DOWNLIGHT CTLED141 - ATTACHED WITH TREE STRAP	06	TREE STRAP

CAST MR-16 Bullet (CBL1CB)
Product Information

CAST Classic Series MR-16 Bullet - Rugged, Beautiful and Affordable



- Description:**
This rugged solid bronze MR-16 fixture is virtually indestructible, weathers to a beautiful patina, and survives the harshest of environmental conditions.
- Features:**
- Solid bronze shroud and body
 - Solid Eurometal black coated stake
 - Extra-long shroud for glare control
 - Knuckle adjusts to any angle
 - Convex lens to prevent mineral build-up
 - Pre-wired with 25' tin-coated No-Ox® marine grade wire
 - High-temp socket with solid nickel contacts
 - Includes heat shield to protect socket
 - Spider Splice® ready

Uses:
Suitable uplighting plant material, structures and architectural features. A wide range of lamp wattages and beam angles; as well as optional lenses and louvers provide maximum lighting design flexibility.

Construction:
Solid bronze shroud and body; Eurometal stake; borosilicate convex lens; ceramic socket with solid nickel contacts and stainless steel spring; stainless steel lock nut and set screw; 25' tin-coated #16-2 No-Ox® marine-grade wire; silicone rubber O-rings.

Dimensions:
Knuckle & Body: 10" x 2.5" fully extended
Stake: 8.5"

Specifications:
Lamp: 12V MR-16 (50w max.) not included.

Listing:
U.L. 1838 Listed Low Voltage Luminaire for wet locations



CBL1CB

REVISIONS / SUBMISSIONS

PASH PLACE ONE LLC
6650 SHEFFIELD LANE
MIAMI BEACH, FL 33141

LANDSCAPE LIGHTING
FIXTURES & SPECIFICATIONS

OWNER

FERNANDO WONG
OUTDOOR LIVING DESIGN

DRAWN BY: JAN
CHECKED BY: FW
DATE: FEBRUARY 08, 2024
SCALE: N.T.S