

DRB23-0965 – 801 South Pointe Drive

CU2-A & CU2-B2

December 11, 2023 DRB Meeting





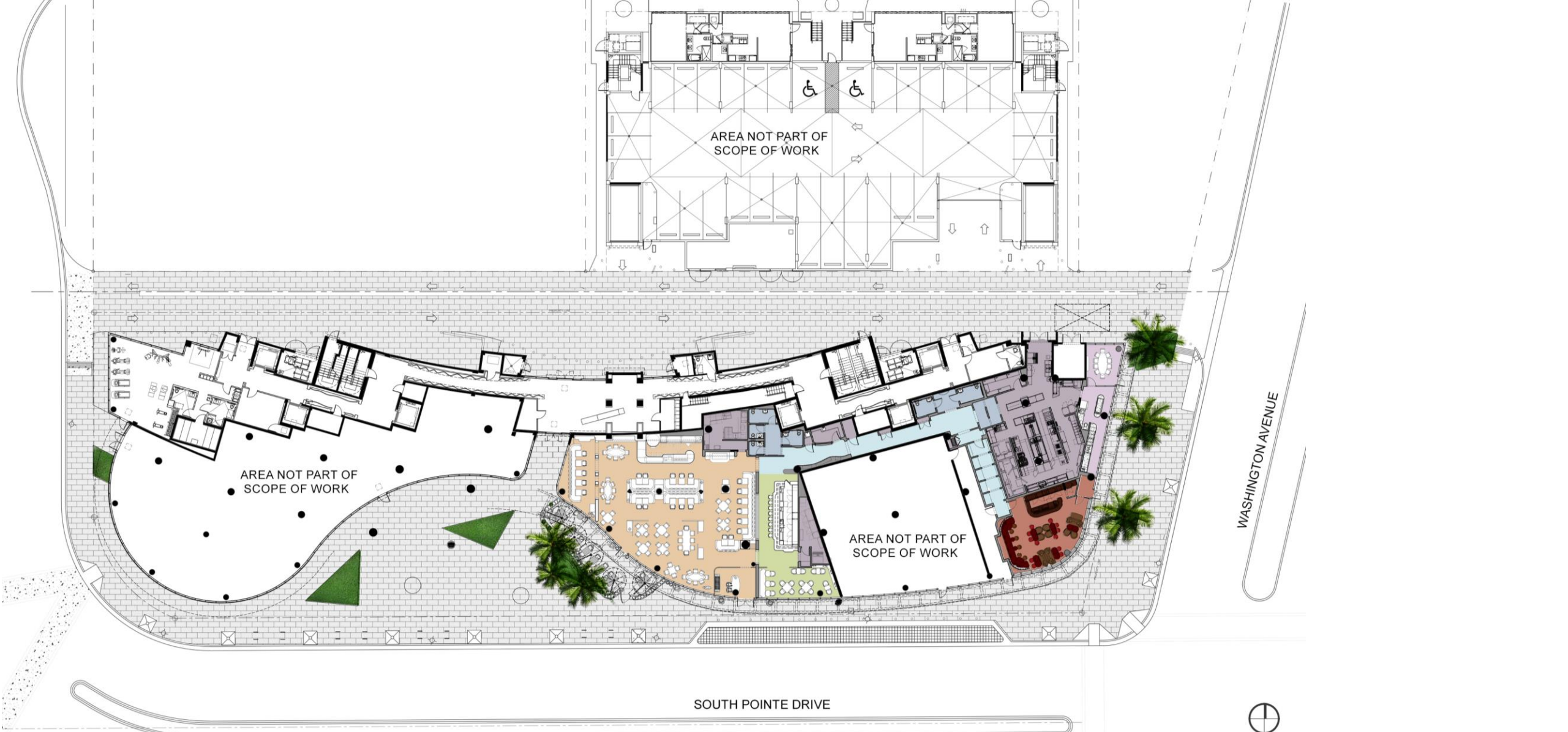
BERCOW
RADELL
FERNANDEZ
LARKIN +
TAPANES

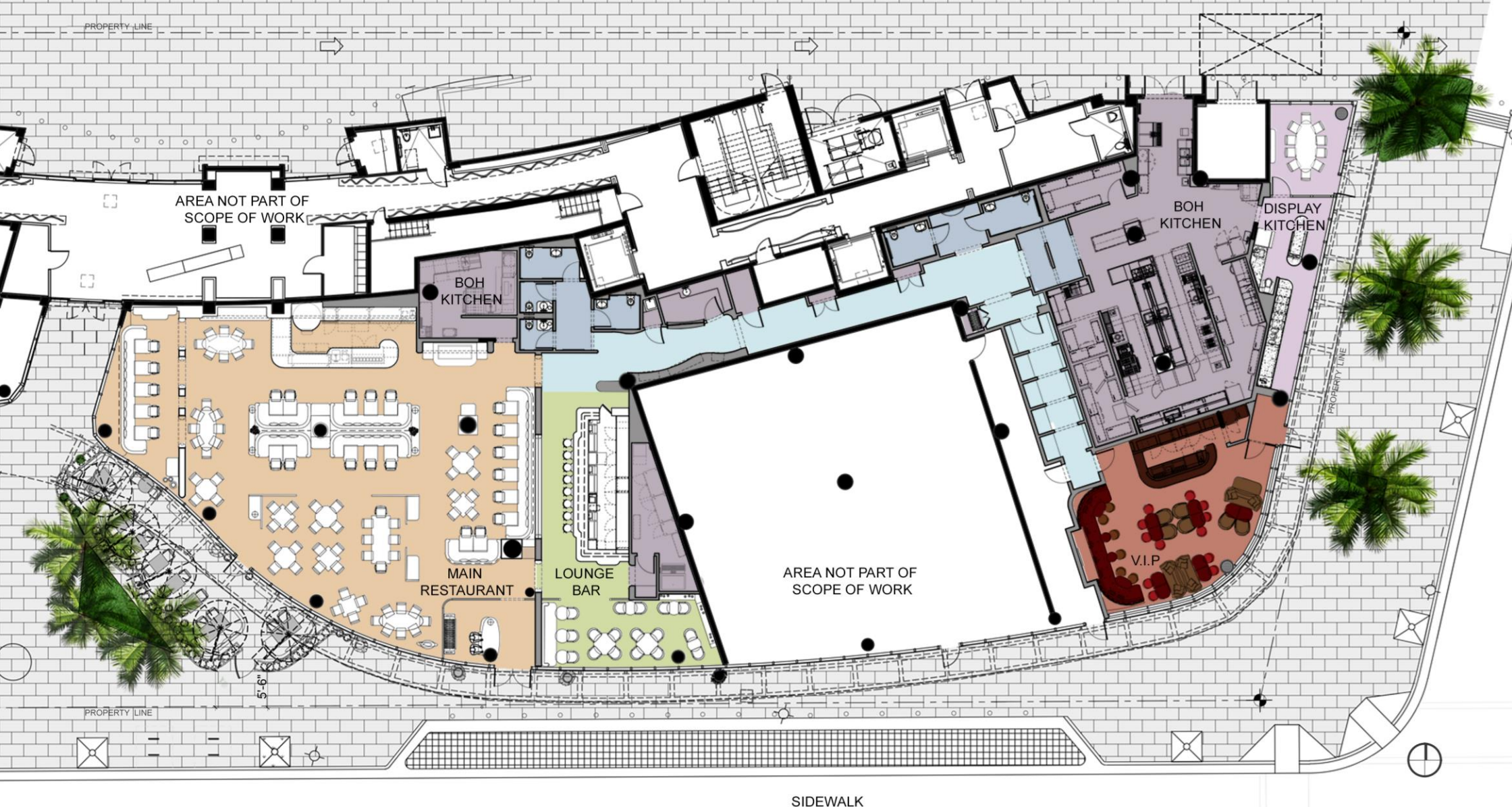
GAIA
W F I T R H S I T N

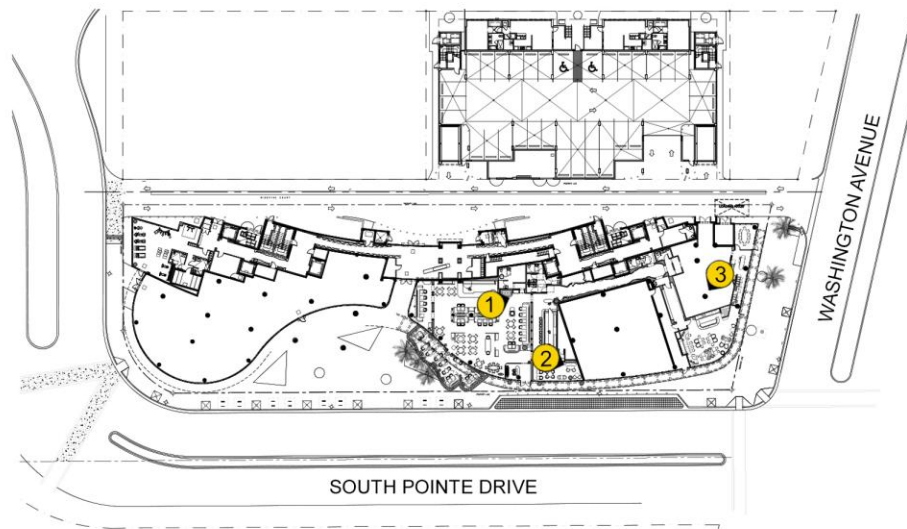
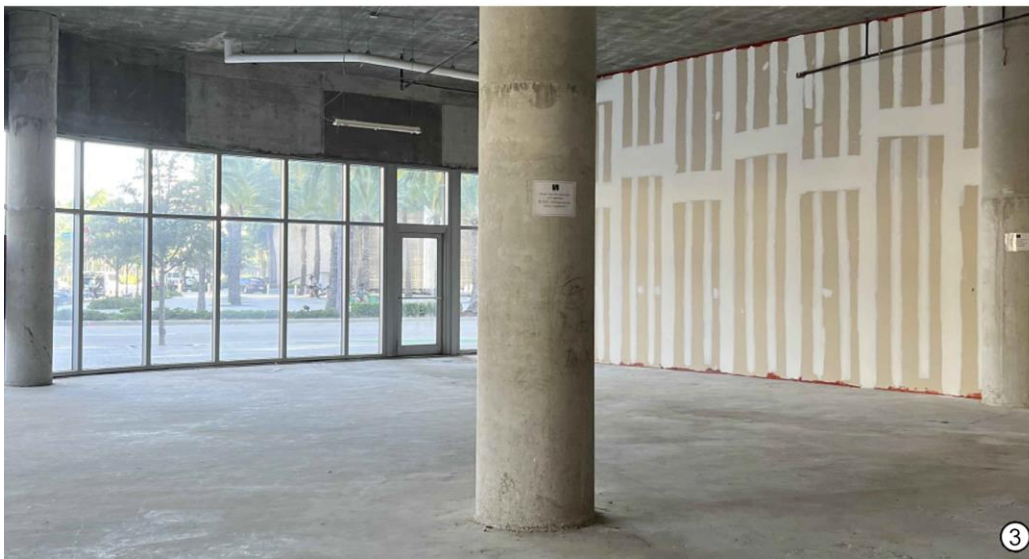
BGAarchitects

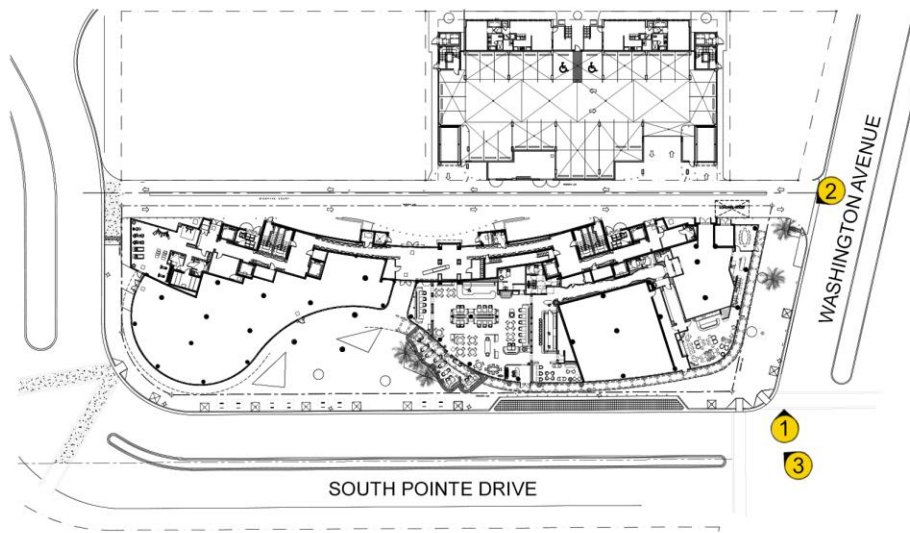


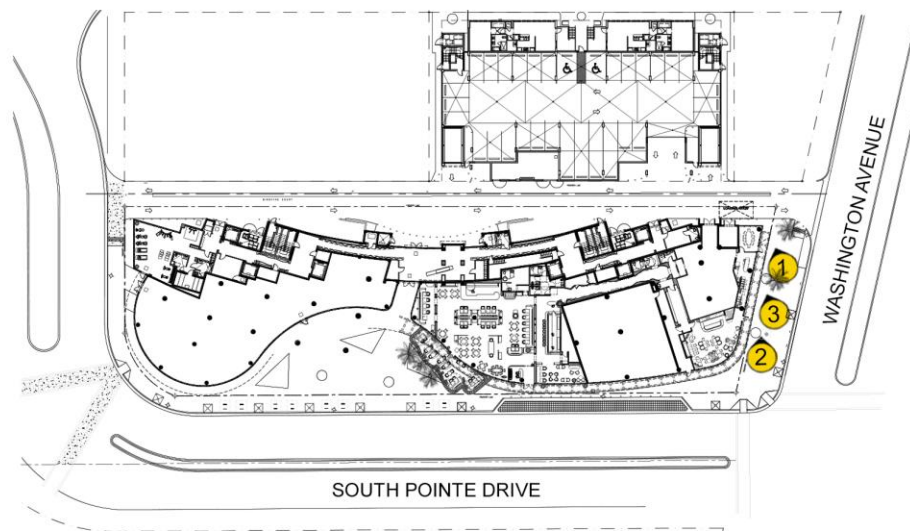
801 SOUTH POINTE DRIVE UNIT CU-2A & CU-2B2 MIAMI BEACH, FL.













BERCOW
RADELL
FERNANDEZ
LARKIN +
TAPANES

GAIA
W F I T R H S I T N

BGAarchitects



BERCOW
RADELL
FERNANDEZ
LARKIN +
TAPANES

GAIA
W F I T R H S I T N

BGAarchitects



GAIA W F I T R H S I T N

BGAarchitects



O
GAIA
~
WFIRHSITN

BGAarchitects



BERCOW
RADELL
FERNANDEZ
LARKIN +
TAPANES

GAIA
W F I T R H S I T N

BGAarchitects



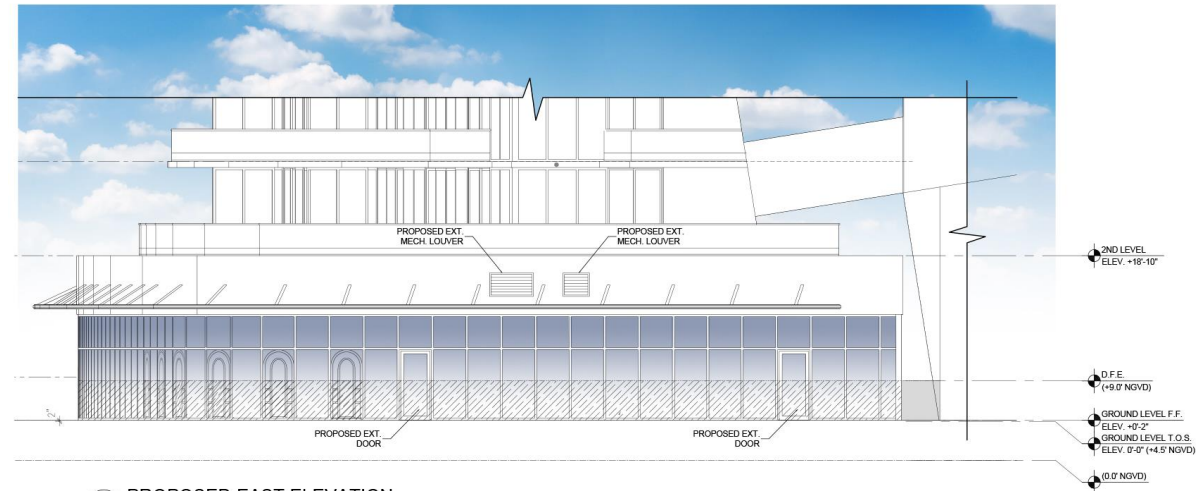


BERCOW
RADELL
FERNANDEZ
LARKIN +
TAPANES

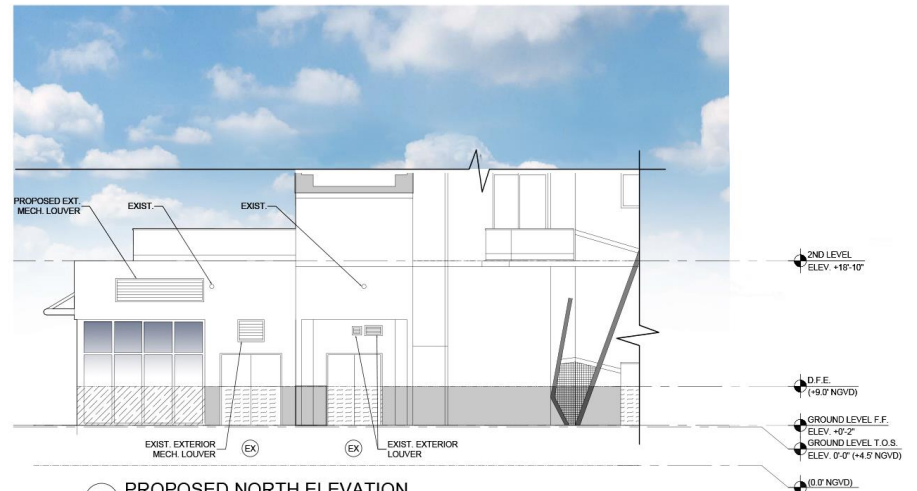
GAIA
W F I T R H S I T N

BGAarchitects

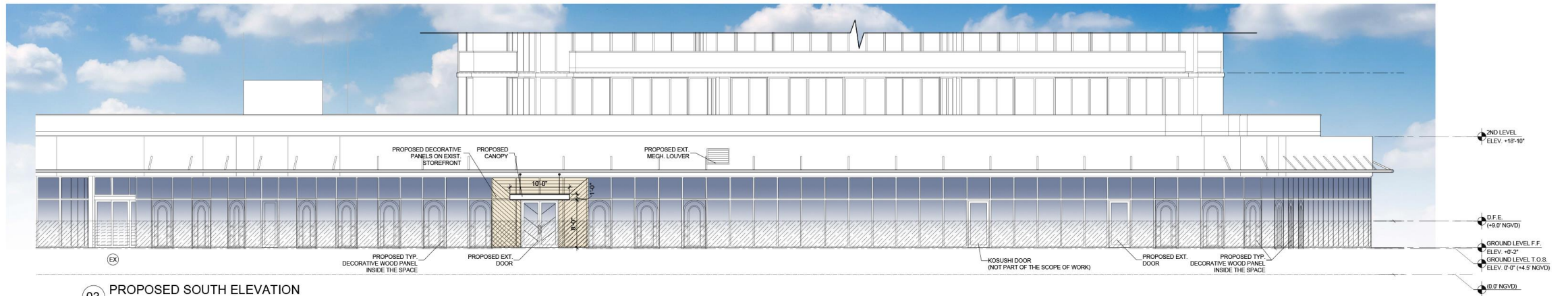




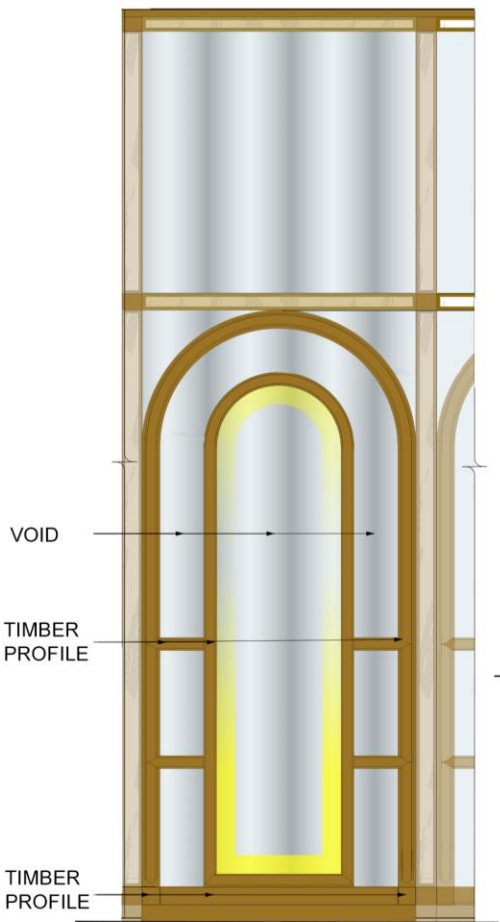
01 PROPOSED EAST ELEVATION



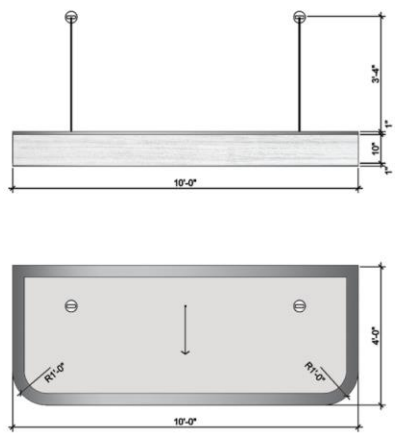
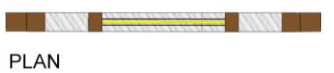
02 PROPOSED NORTH ELEVATION

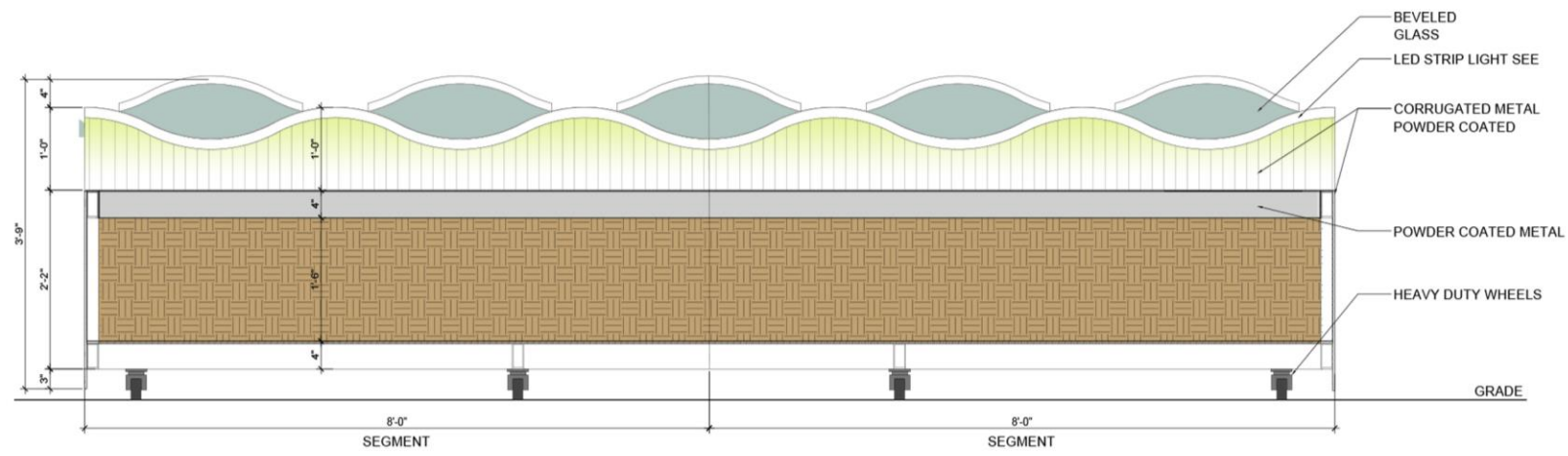


03 PROPOSED SOUTH ELEVATION

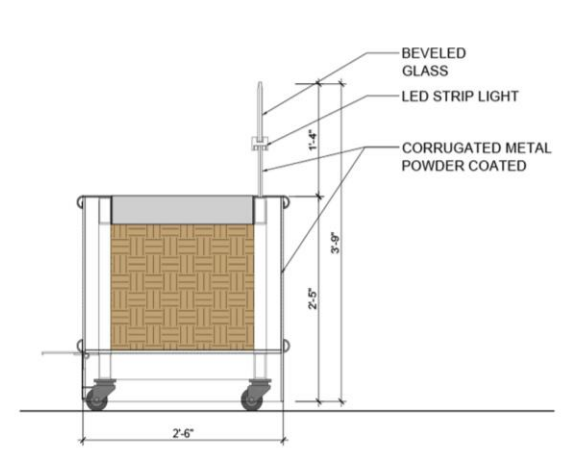


WINDOW SCREEN ELEVATION

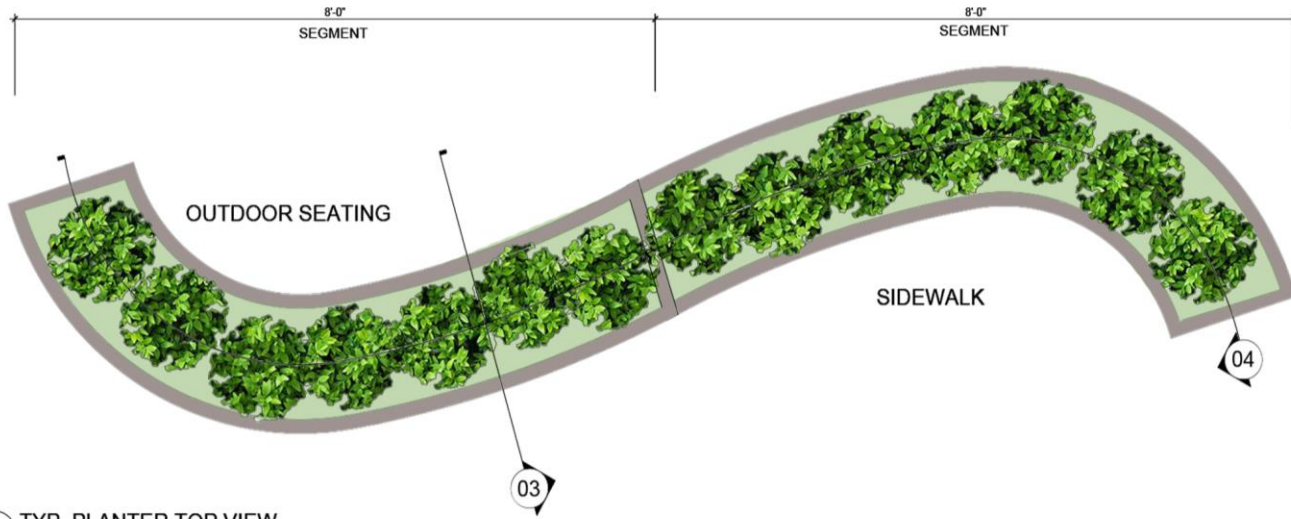




04 TYP. PLANTER SECTION



03 TYP. PLANTER SECTION



02 TYP. PLANTER TOP VIEW



KEY PLAN



G A I A
~

W F I I T R H S I T N

BGArchitects