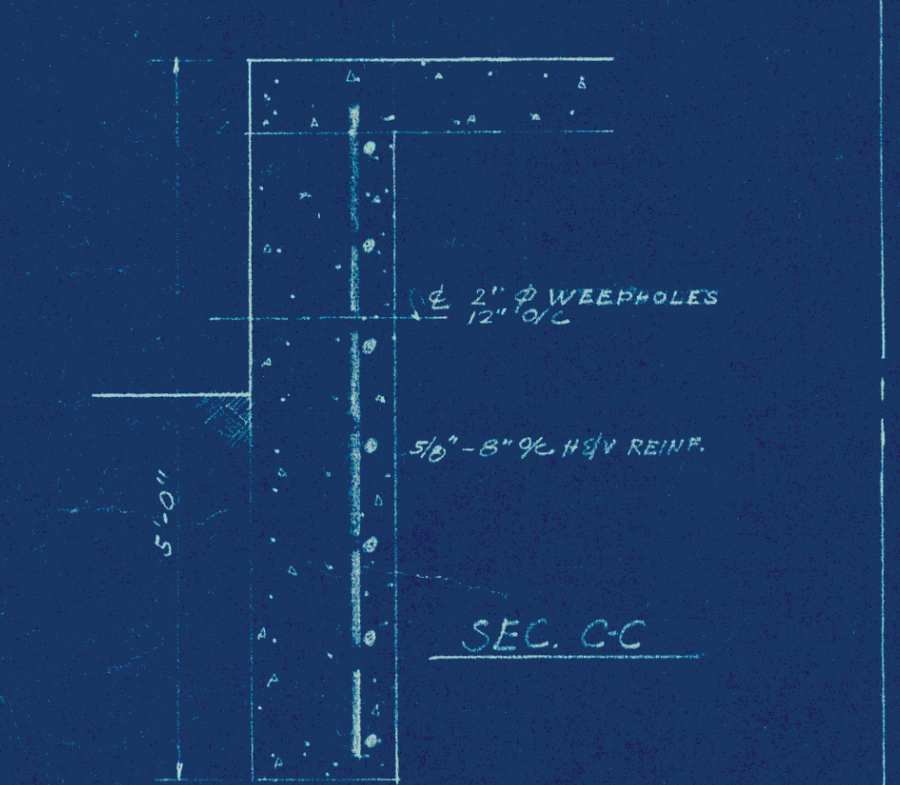
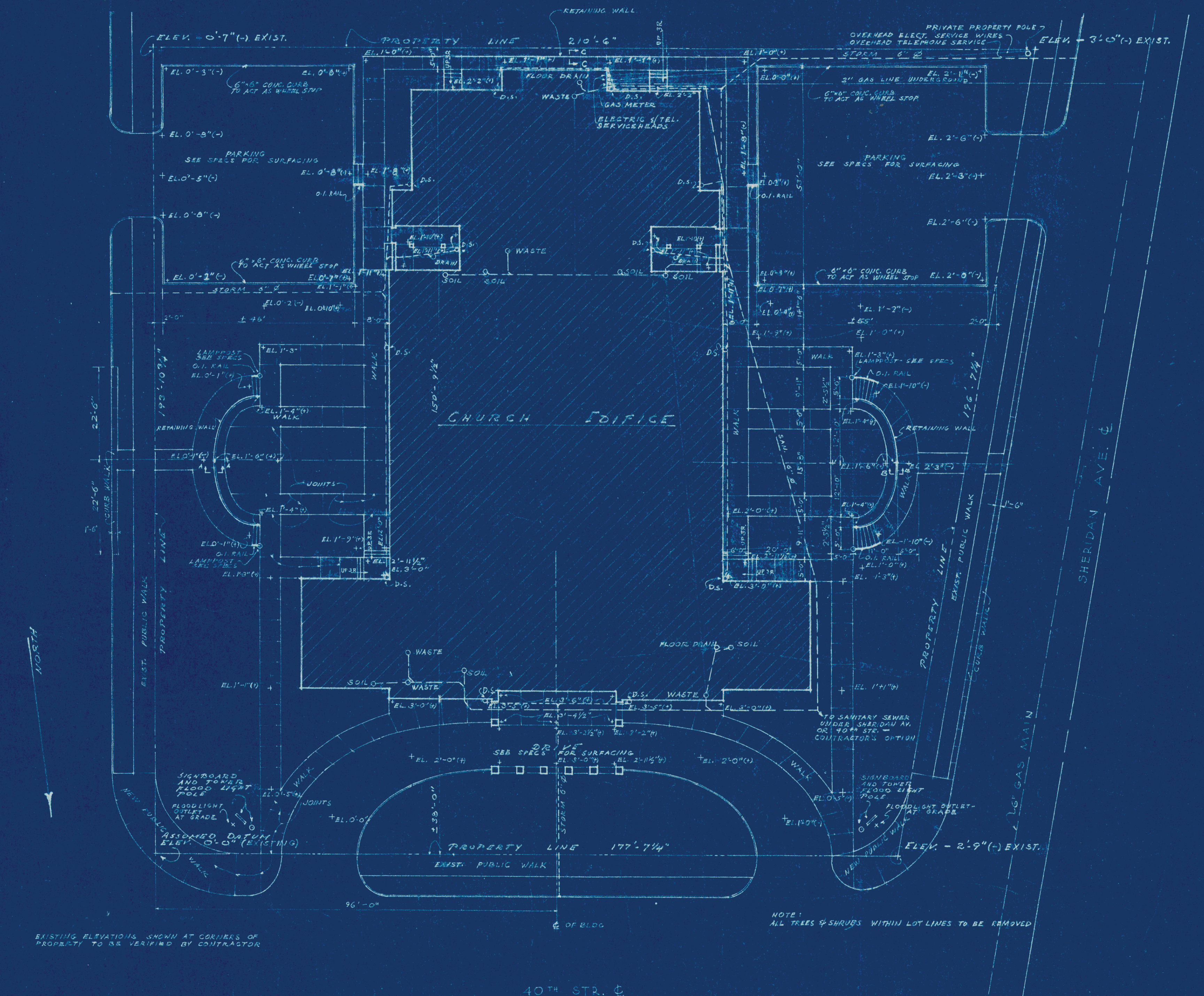


SEC. A-A

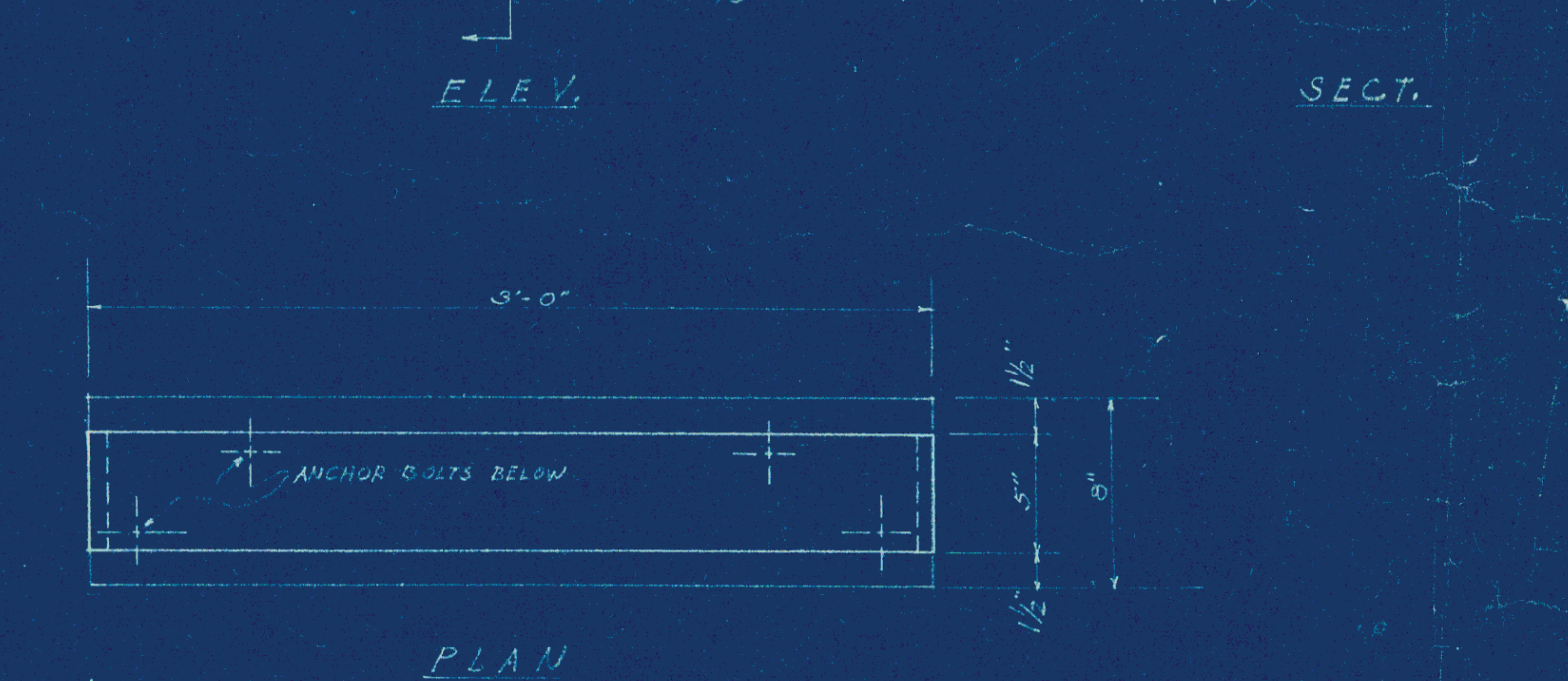
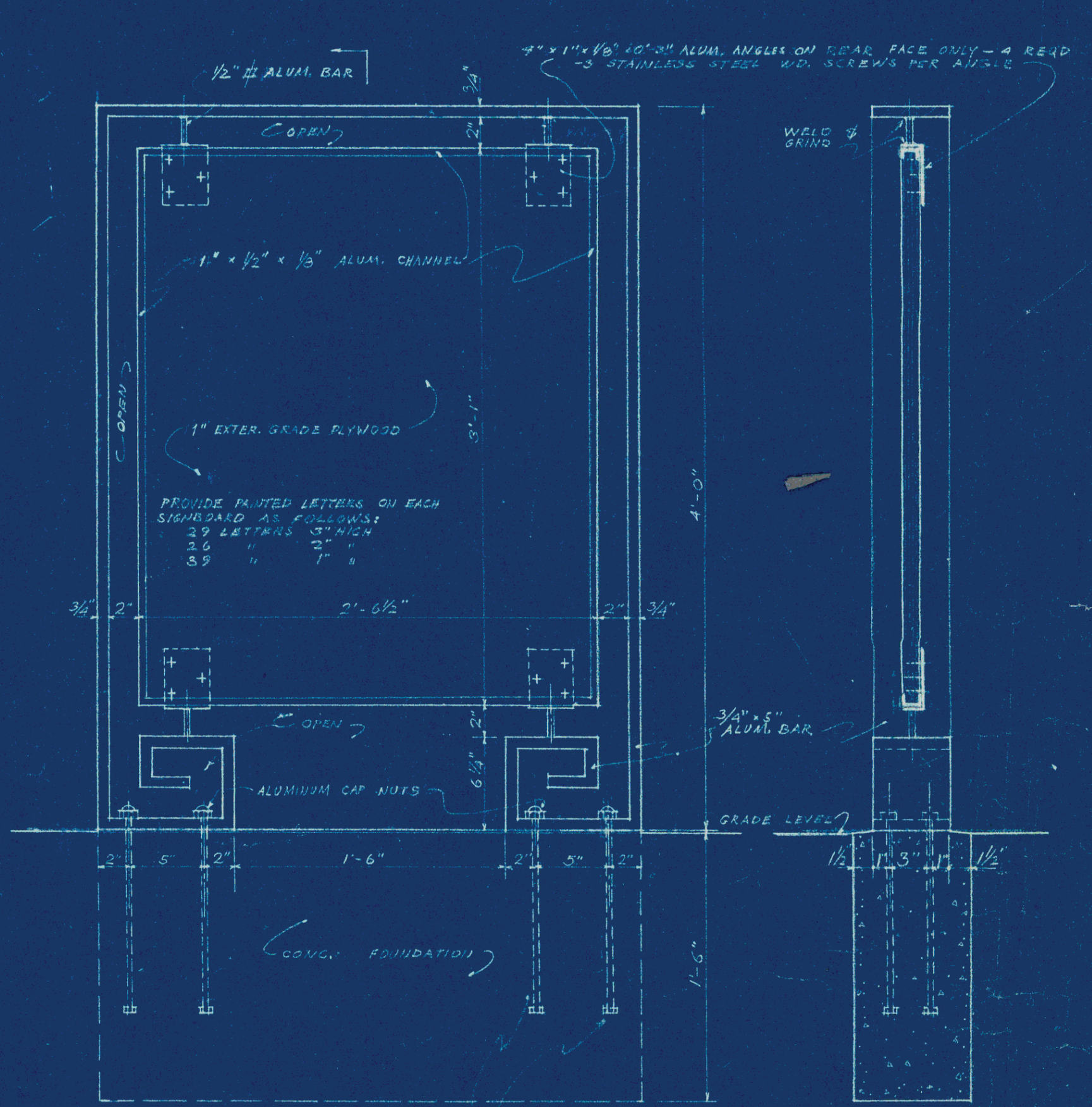


SEC. B-B

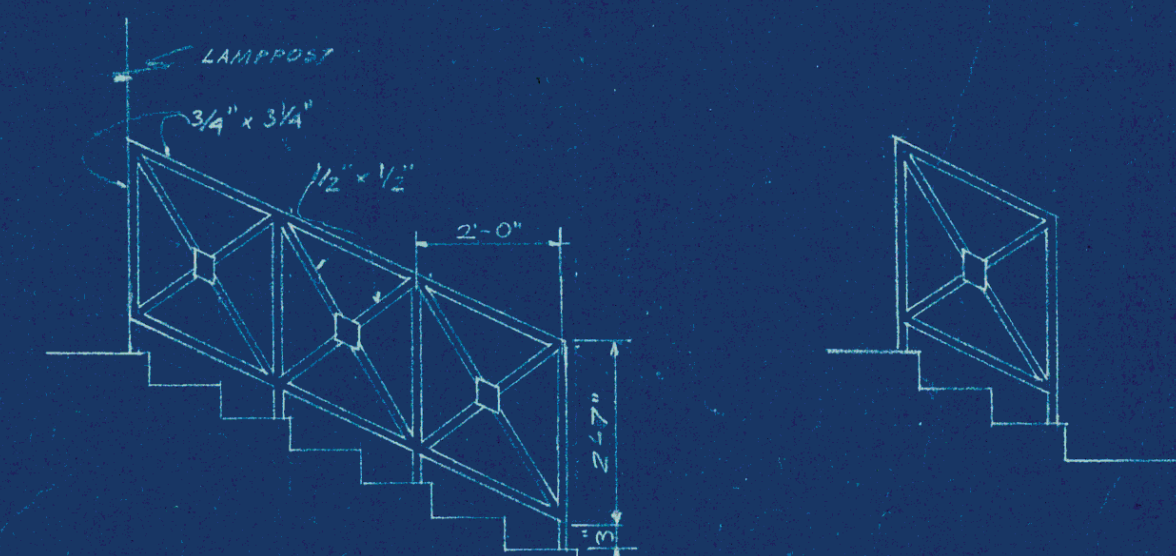
RETAINING WALL SECTIONS
3/4" = 1'-0"



PLOT PLAN
1/16" = 1'-0"

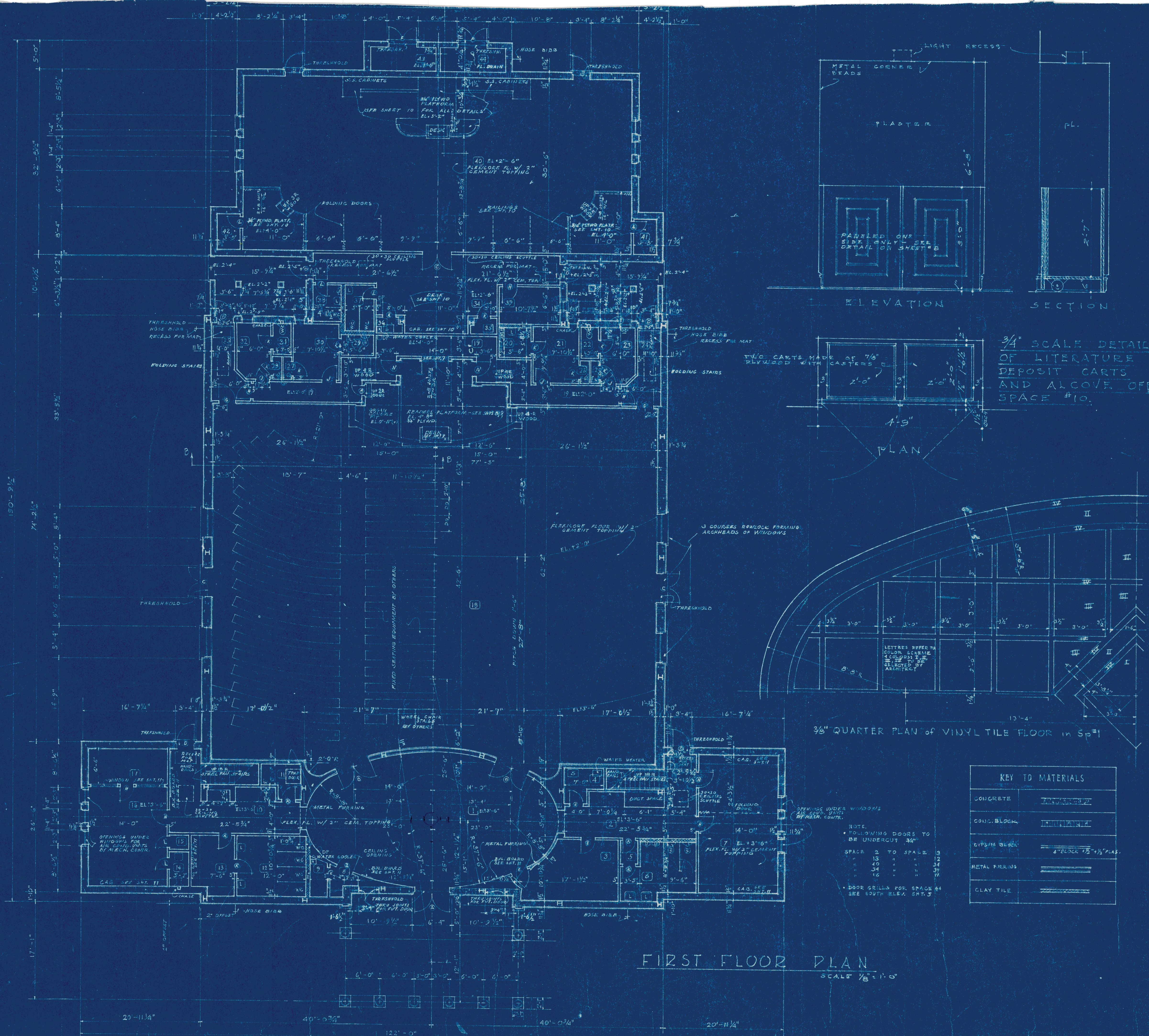


EXTERIOR SIGN BOARD DETAIL
1/2" = 1'-0"

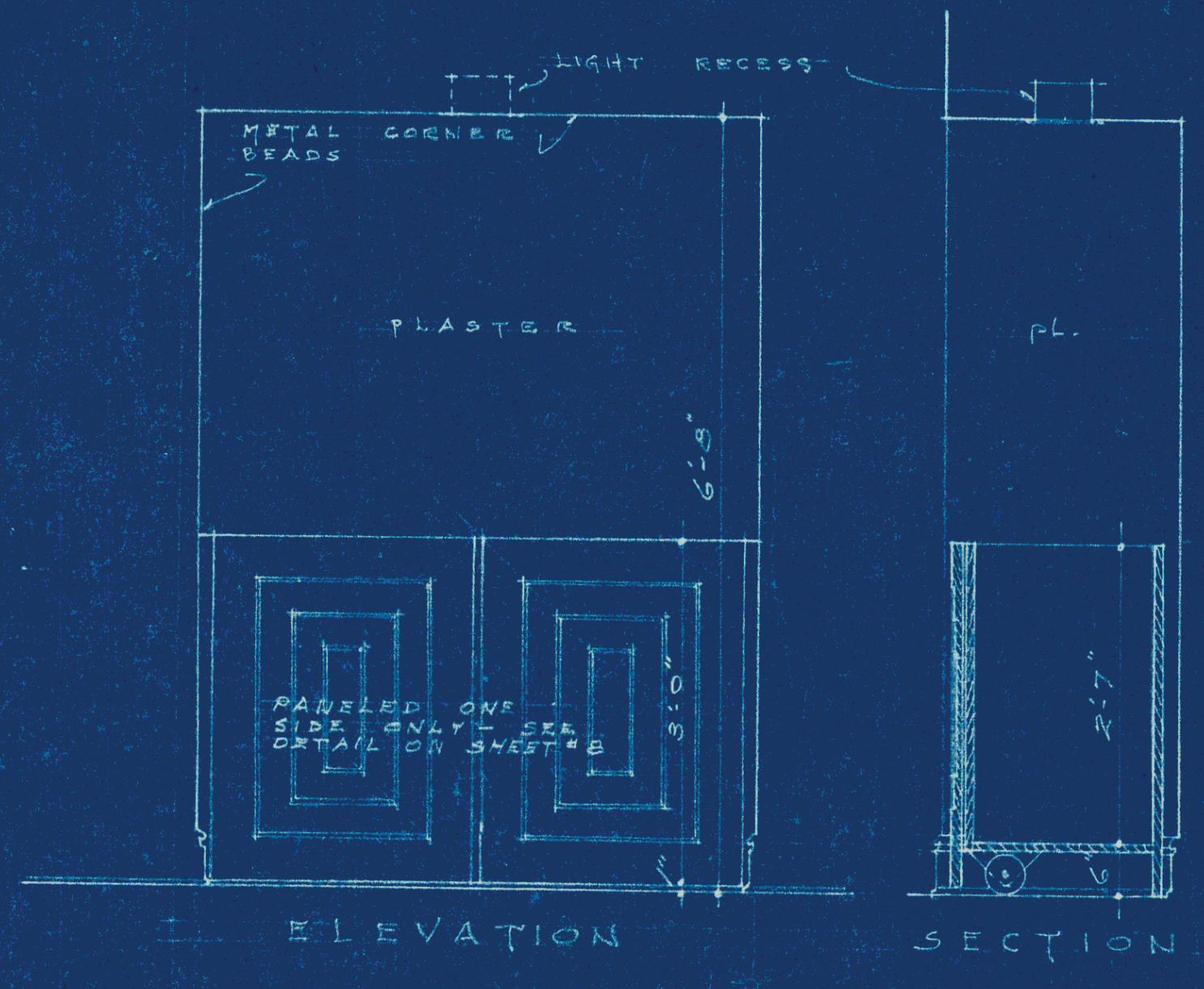
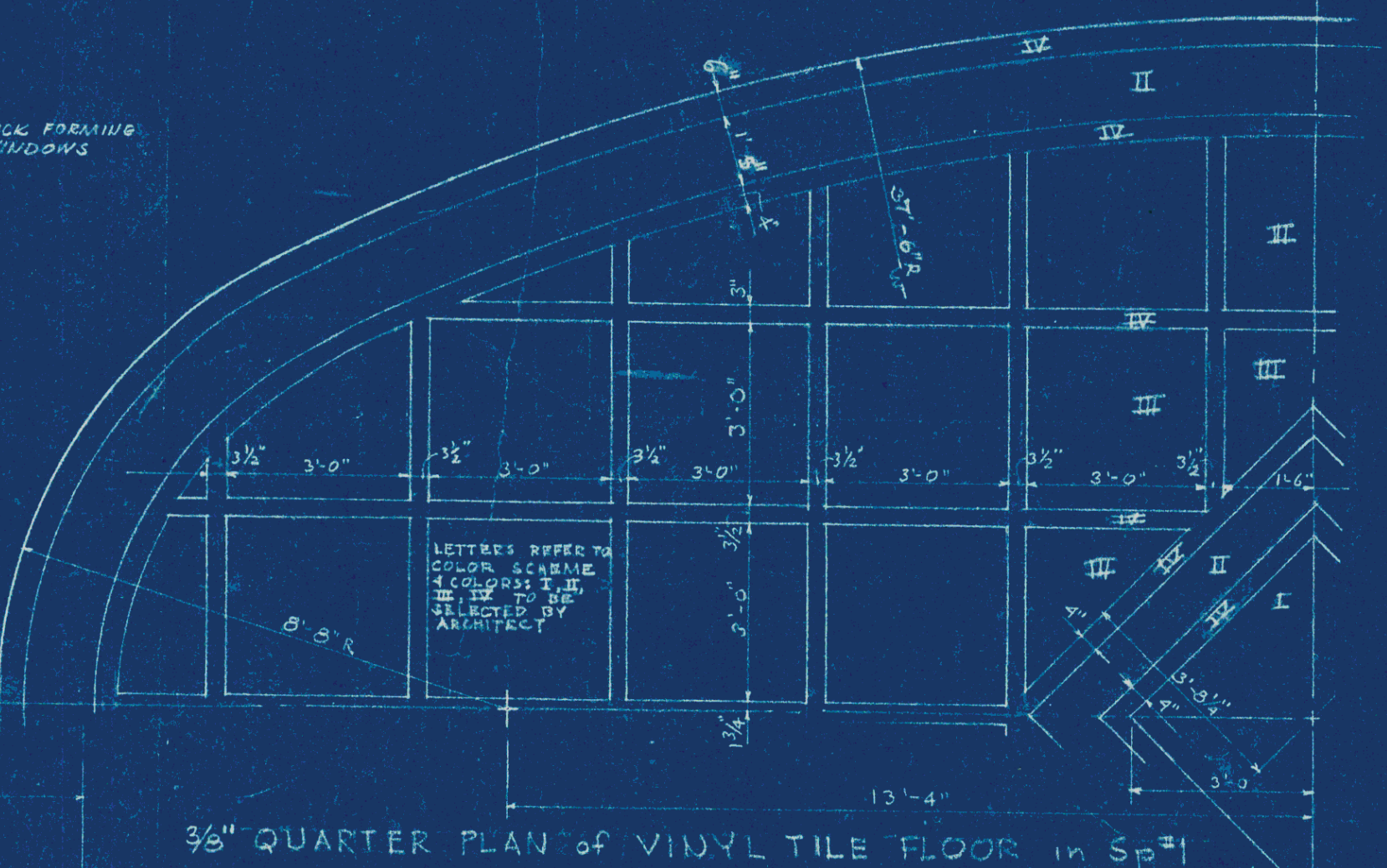
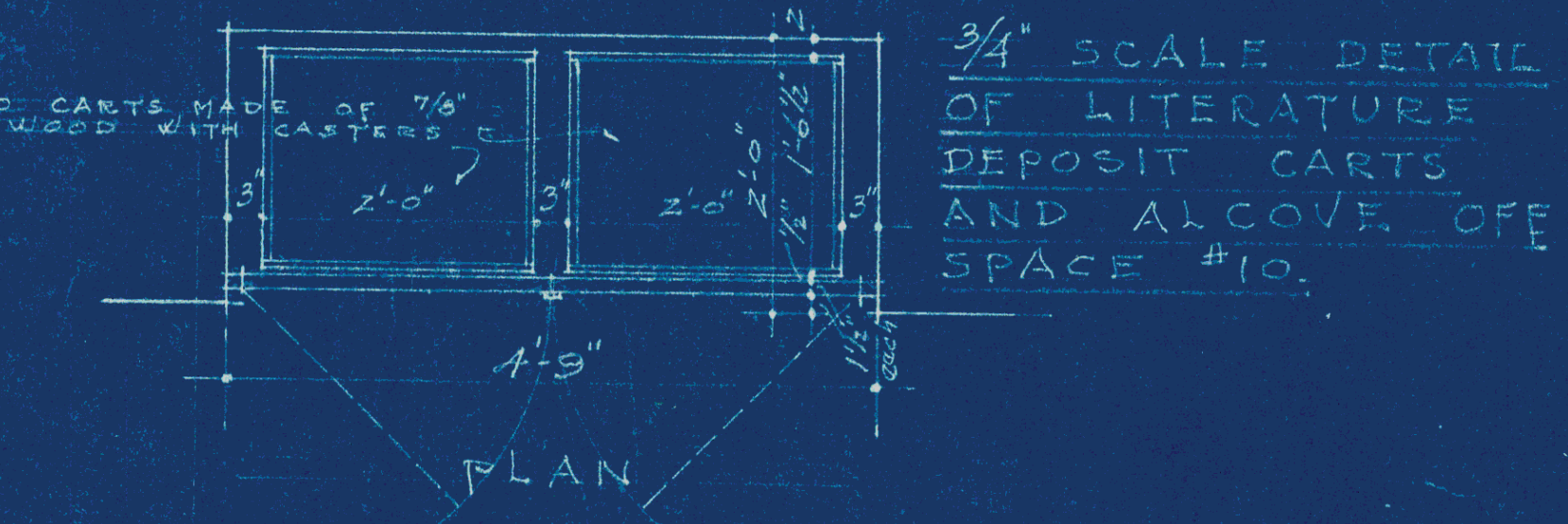


O.I. RAIL DETAILS
3/8" = 1'-0"

FIRST CHURCH of CHRIST, SCIENTIST PINE TREE DRIVE at 40th STR., MIAMI BEACH, FLA.		
CHARLES DRAPER FAULKNER ARCHITECT 307 N. MICHIGAN AVE., CHICAGO, ILLINOIS FLA. REGISTRATION NUMBER 2606	SEAL CHAS. D. FAULKNER CHICAGO, ILLINOIS	DATE OCT. 17, '58 SHEET REV. 11-13-58



FIRST FLOOR PLAN
SCALE 1/8" = 1'-0"



SPACE SCHEDULE		REMARKS		DEFINITIONS:	
NO.	NAME	FLOOR FINISH	WALL	CEILING	DOOR
1	ENTRANCE HALL	FLEX.	CONC.	PLAS.	WOOD
2	WEST FOYER	FLEX.	CONC.	PLAS.	WOOD
3	LITER. SALES & DISPLAY	FLEX.	CONC.	PLAS.	WOOD
4	JANITORS CLOSET	FLEX.	CONC.	PLAS.	WOOD
5	VE-5-T	FLEX.	CONC.	PLAS.	WOOD
6	MEN'S ROOM	FLEX.	CONC.	PLAS.	WOOD
7	COMMITTEE ROOM	FLEX.	CONC.	PLAS.	WOOD
8	TELEPHONE	FLEX.	CONC.	PLAS.	WOOD
9	EAST FOYER	FLEX.	CONC.	PLAS.	WOOD
10	CLOSET	FLEX.	CONC.	PLAS.	WOOD
11	WOMEN'S ROOM	FLEX.	CONC.	PLAS.	WOOD
12	POWDER ROOM	FLEX.	CONC.	PLAS.	WOOD
13	NURSERY TOILET	FLEX.	CONC.	PLAS.	WOOD
14	CLOSET	FLEX.	CONC.	PLAS.	WOOD
15	NURSERY	FLEX.	CONC.	PLAS.	WOOD
16	CRIB ROOM	FLEX.	CONC.	PLAS.	WOOD
17	AUDITORIUM	FLEX.	CONC.	PLAS.	WOOD
18	CO'S DOR.	FLEX.	CONC.	PLAS.	WOOD
19	TOILET	FLEX.	CONC.	PLAS.	WOOD
20	TOILET	FLEX.	CONC.	PLAS.	WOOD
21	SECOND READING RM	FLEX.	CONC.	PLAS.	WOOD
22	TOILET	FLEX.	CONC.	PLAS.	WOOD
23	TOILET	FLEX.	CONC.	PLAS.	WOOD
24	HALL	FLEX.	CONC.	PLAS.	WOOD
25	CLOSET	FLEX.	CONC.	PLAS.	WOOD
26	STAIRS	FLEX.	CONC.	PLAS.	WOOD
27	STAIRS	FLEX.	CONC.	PLAS.	WOOD
28	STAIRS	FLEX.	CONC.	PLAS.	WOOD
29	STAIRS	FLEX.	CONC.	PLAS.	WOOD
30	STAIRS	FLEX.	CONC.	PLAS.	WOOD
31	TOILET	FLEX.	CONC.	PLAS.	WOOD
32	TOILET	FLEX.	CONC.	PLAS.	WOOD
33	HALL	FLEX.	CONC.	PLAS.	WOOD
34	HALL	FLEX.	CONC.	PLAS.	WOOD
35	HALL	FLEX.	CONC.	PLAS.	WOOD
36	HALL	FLEX.	CONC.	PLAS.	WOOD
37	HALL	FLEX.	CONC.	PLAS.	WOOD
38	HALL	FLEX.	CONC.	PLAS.	WOOD
39	HALL	FLEX.	CONC.	PLAS.	WOOD
40	HALL	FLEX.	CONC.	PLAS.	WOOD
41	HALL	FLEX.	CONC.	PLAS.	WOOD
42	HALL	FLEX.	CONC.	PLAS.	WOOD
43	HALL	FLEX.	CONC.	PLAS.	WOOD
44	HALL	FLEX.	CONC.	PLAS.	WOOD
45	HALL	FLEX.	CONC.	PLAS.	WOOD
46	HALL	FLEX.	CONC.	PLAS.	WOOD
47	HALL	FLEX.	CONC.	PLAS.	WOOD
48	HALL	FLEX.	CONC.	PLAS.	WOOD
49	HALL	FLEX.	CONC.	PLAS.	WOOD
50	HALL	FLEX.	CONC.	PLAS.	WOOD
51	HALL	FLEX.	CONC.	PLAS.	WOOD
52	HALL	FLEX.	CONC.	PLAS.	WOOD
53	HALL	FLEX.	CONC.	PLAS.	WOOD
54	HALL	FLEX.	CONC.	PLAS.	WOOD
55	HALL	FLEX.	CONC.	PLAS.	WOOD
56	HALL	FLEX.	CONC.	PLAS.	WOOD
57	HALL	FLEX.	CONC.	PLAS.	WOOD
58	HALL	FLEX.	CONC.	PLAS.	WOOD
59	HALL	FLEX.	CONC.	PLAS.	WOOD
60	HALL	FLEX.	CONC.	PLAS.	WOOD
61	HALL	FLEX.	CONC.	PLAS.	WOOD
62	HALL	FLEX.	CONC.	PLAS.	WOOD
63	HALL	FLEX.	CONC.	PLAS.	WOOD
64	HALL	FLEX.	CONC.	PLAS.	WOOD
65	HALL	FLEX.	CONC.	PLAS.	WOOD
66	HALL	FLEX.	CONC.	PLAS.	WOOD
67	HALL	FLEX.	CONC.	PLAS.	WOOD
68	HALL	FLEX.	CONC.	PLAS.	WOOD
69	HALL	FLEX.	CONC.	PLAS.	WOOD
70	HALL	FLEX.	CONC.	PLAS.	WOOD
71	HALL	FLEX.	CONC.	PLAS.	WOOD
72	HALL	FLEX.	CONC.	PLAS.	WOOD
73	HALL	FLEX.	CONC.	PLAS.	WOOD
74	HALL	FLEX.	CONC.	PLAS.	WOOD
75	HALL	FLEX.	CONC.	PLAS.	WOOD
76	HALL	FLEX.	CONC.	PLAS.	WOOD
77	HALL	FLEX.	CONC.	PLAS.	WOOD
78	HALL	FLEX.	CONC.	PLAS.	WOOD
79	HALL	FLEX.	CONC.	PLAS.	WOOD
80	HALL	FLEX.	CONC.	PLAS.	WOOD
81	HALL	FLEX.	CONC.	PLAS.	WOOD
82	HALL	FLEX.	CONC.	PLAS.	WOOD
83	HALL	FLEX.	CONC.	PLAS.	WOOD
84	HALL	FLEX.	CONC.	PLAS.	WOOD
85	HALL	FLEX.	CONC.	PLAS.	WOOD
86	HALL	FLEX.	CONC.	PLAS.	WOOD
87	HALL	FLEX.	CONC.	PLAS.	WOOD
88	HALL	FLEX.	CONC.	PLAS.	WOOD
89	HALL	FLEX.	CONC.	PLAS.	WOOD
90	HALL	FLEX.	CONC.	PLAS.	WOOD
91	HALL	FLEX.	CONC.	PLAS.	WOOD
92	HALL	FLEX.	CONC.	PLAS.	WOOD
93	HALL	FLEX.	CONC.	PLAS.	WOOD
94	HALL	FLEX.	CONC.	PLAS.	WOOD
95	HALL	FLEX.	CONC.	PLAS.	WOOD
96	HALL	FLEX.	CONC.	PLAS.	WOOD
97	HALL	FLEX.	CONC.	PLAS.	WOOD
98	HALL	FLEX.	CONC.	PLAS.	WOOD
99	HALL	FLEX.	CONC.	PLAS.	WOOD
100	HALL	FLEX.	CONC.	PLAS.	WOOD

FIRST CHURCH OF CHRIST, SCIENTIST
PINE TREE DRIVE ST 40TH STR., MIAMI BEACH, FL.

CHARLES DRAPER FAULKNER
ARCHITECT

307 N. MICHIGAN AVE., CHICAGO, ILLINOIS
744. REGISTRATION NUMBER 2606

DATE: OCT 17, 1938
SHEET: 10 OF 10

SEAL: CHAS. D. FAULKNER, CHICAGO, ILLINOIS