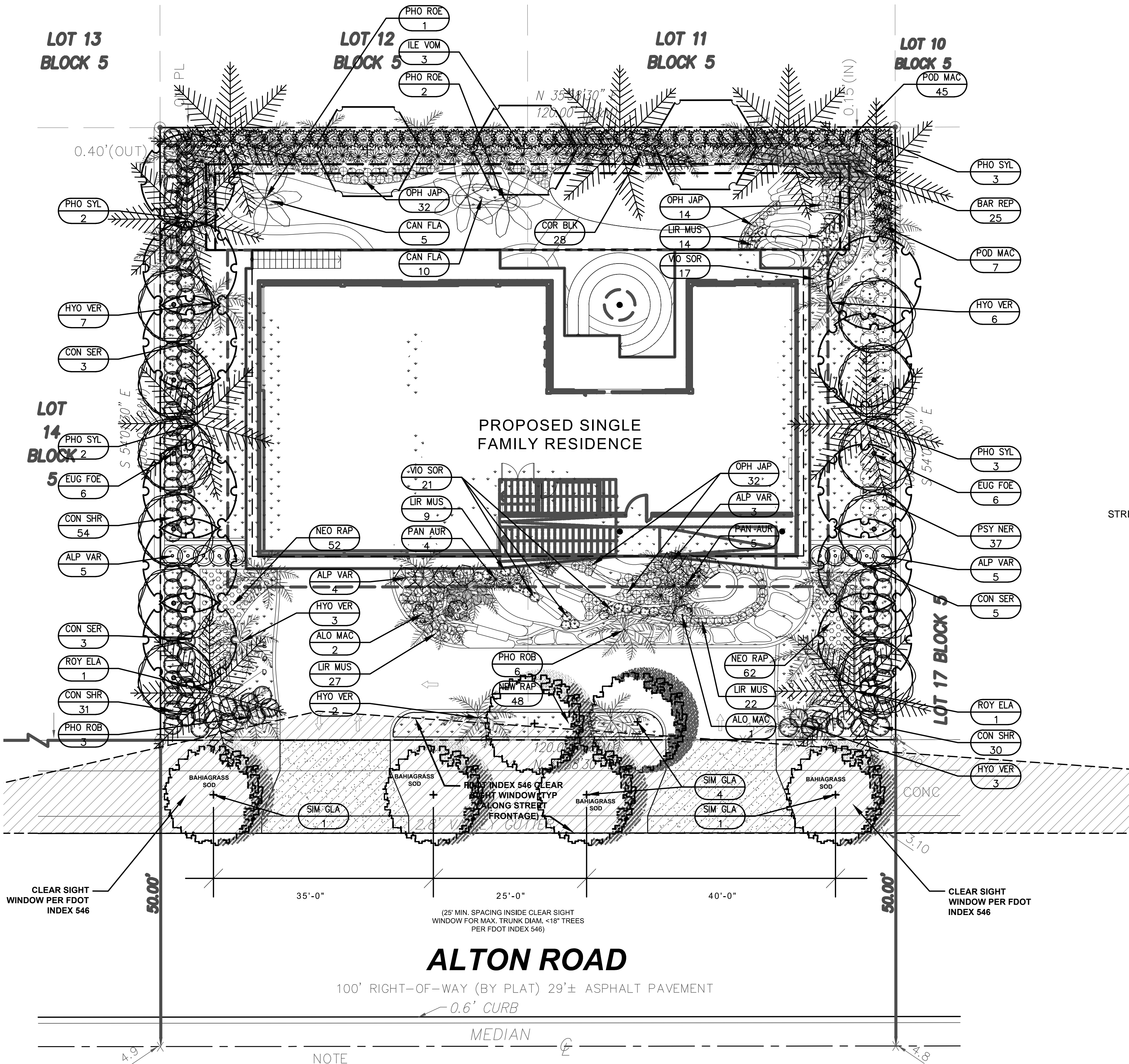


This document, together with the concepts and designs presented herein, is intended only for the specific purpose and client for which it was prepared. Abuse of and improper reliance on this document without written authorization and adaptation by Green Earth Landscape Architecture, shall be without liability to Green Earth Landscape Architecture, LLC.



### ALTON ROAD

100' RIGHT-OF-WAY (BY PLAT) 29'± ASPHALT PAVEMENT

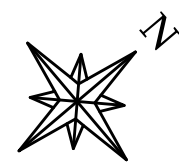
0.6' CURB

MEDIAN

NOTE  
 - B.M. USED: D-157-R  
 - ELEVATION: 4.93

### GROUND LEVEL LANDSCAPE PLANTING PLAN

SCALE: 1" = 10'



### LANDSCAPE TABULAR DATA CODE CHART

| REGULATING DOCUMENT: CITY OF MIAMI BEACH CHAPTER 126 - LANDSCAPE REQUIREMENTS   |                    |                      |
|---|--------------------|----------------------|
| SITE AREA: 12,000 SF (.28 ACRES)  |                    |                      |
| ZONING/LAND USE: RS-4   | REQUIRED           | PROVIDED             |
| SEC. 126 (a)(1) - STREET TREE SIZE AND SPACING<br>1 TREE/20LF STREET FRONTAGE @ 120 LF  | 6 TREES            | 6 TREES              |
| SEC. 126 (b)(4) - MAXIMUM LAWN GRASS/SOD AREAS<br>50% @ 12,000 SF   | 6,000 SF           | 5,466 SF             |
| SEC. 126 (c) - MINIMUM NUMBER OF TREES<br>FRONT YARD 2 (+ 6 FOR ADD'L LOT SF) = 8 TREES<br>BACK YARD 3 (+ 6 FOR ADD'L LOT SF) = 9 TREES | 8 TREES<br>9 TREES | 11 TREES<br>15 TREES |
| SEC. 126 (d) - SHRUBS<br>12 SHRUBS PER TOTAL REQUIRED TREES   | 276 SHRUBS         | 285 SHRUBS           |
| NATIVE/DROUGHT TOLERANT SPECIES REQUIREMENTS  | 50%                | 57%                  |
| TREES   | 60%                | 62%                  |
| SHRUBS  |                    |                      |

### GROUND LEVEL PLANT LIST AND SPECIFICATIONS

| TREES AND PALMS         |     |                              |                         |                 |      |  |
|-------------------------|-----|------------------------------|-------------------------|-----------------|------|--|
| SYMBOL                  | QTY | LATIN NAME                   | COMMON NAME             | SIZE            | SPRD | DESCRIPTION  |
| *N CON SER              | 11  | Conocarpus e. 'Sericeus'     | SILVER BUTTONWOOD       | 3" DBH/ 12' HT. | 6'   | STRAIGHT SINGLE TRUNK, STANDARD, HEAVY EVEN BRANCHING, FIELD GROWN |
| *N EUG FOE              | 12  | Eugenia foetida              | SPANISH STOPPER         | 3" DBH/ 12' HT. | 6'   | STRAIGHT SINGLE TRUNK, STANDARD, HEAVY EVEN BRANCHING, FIELD GROWN |
| *N HYO VER              | 21  | Hyophorbe verschaffeltii     | SPINDLE PALM            | 10' GW          | 8'   | STRAIGHT THICK EVEN TRUNKS, FULL CROWNS, MATCHED                   |
| *N ILE VOM              | 3   | Ilex vomitoria               | WEeping HOLLY           | 3" DBH/ 12' HT. | 6'   | STRAIGHT SINGLE TRUNK, STANDARD, HEAVY EVEN BRANCHING, FIELD GROWN |
| PHO ROE                 | 9   | Phoenix roebellinii          | PYGMY DATE PALM         | 8' CT           | 7'   | STRAIGHT THICK EVEN TRUNKS, FULL CROWNS, MATCHED                   |
| PHO SYL                 | 5   | Phoenix sylvestris           | SYLVESTER PALM          | 10' GW          | 8'   | STRAIGHT THICK EVEN TRUNKS, FULL CROWNS, MATCHED                   |
| *N ROY ELA              | 2   | Roystonea elata              | ROYAL PALM              | 18' GW          | 16'  | STRAIGHT THICK EVEN TRUNKS, FULL CROWNS, MATCHED                   |
| *N SIM GLA              | 6   | Simaruba glauca              | PARADISE TREE           | 5" DBH/ 16' HT. | 8'   | STRAIGHT TRUNK, HEAVY EVEN BRANCHING, FIELD GROWN                  |
| SHRUBS AND GROUND COVER |     |                              |                         |                 |      |  |
| SYMBOL                  | QTY | LATIN NAME                   | COMMON NAME             | SIZE            | SPRD | DESCRIPTION  |
| ALO MAC                 | 3   | Alocasia macrorrhiza 'Lutea' | LUTEA ALOCASIA          | 36"             | 36"  | FULL, PLACE WHERE SHOWN ON PLAN                                    |
| ALP VAR                 | 10  | Alpinia zerumbet 'Variegata' | LITTLELEAF CLUSIA       | 42"             | 36"  | FULL, SPACE 36" ON CENTER  |
| BAR REP                 | 25  | Baleria repens               | CORAL CREEPER           | 18"             | 24"  | FULL, SPACE 24" ON CENTER TO FILL BED                              |
| CAN FLA                 | 15  | Canna flaccida               | YELLOW CANNA            | 24"             | 24"  | FULL, SPACE 30" ON CENTER  |
| *N CLU GUT              | 0   | Clusia guttifera             | LITTLELEAF CLUSIA       | 30"             | 24"  | FULL, SPACE 24" ON CENTER TO CREATE CONT. HEDGE                    |
| *N CON SHR              | 115 | Conocarpus e. 'Sericeus'     | SILVER BUTTONWOOD HEDGE | 30"             | 24"  | FULL, SPACE 24" ON CENTER TO CREATE CONT. HEDGE                    |
| COR BLK                 | 28  | Cordyline f. 'Black Magic'   | BLACK MAGIC CORDYLINE   | 42"             | 36"  | FULL, SPACE 36" ON CENTER  |
| EPI SPP                 | 0   | Epidendrum speciosa          | REED STEM ORCHID        | 18"             | 18"  | FULL, SPACE 18" TO FILL SPACES                                     |
| LIR MUS                 | 58  | Liriope muscari              | LIRIOPE                 | 18"             | 18"  | FULL, SPACE 18" TO FILL SPACES                                     |
| *N MUH CAP              | 0   | Muhlenbergia capillaris      | MUHLY GRASS             | 30"             | 24"  | FULL, STAGGER 24" ON CENTER TO CREATE DENSE SCREEN                 |
| NEO RAP                 | 156 | Neoregelia 'Raphael'         | RAPHAEL BROMELIAD       | 12"             | 12"  | FULL, SPACE 15" TO FILL SPACES                                     |
| OPH JAP                 | 32  | Ophiopogon japonicus         | MONDO GRASS             | 16"             | 16"  | FULL, SPACE 16" ON CENTER TO FILL SPACES                           |
| PHY NOD                 | 0   | Phylla nodiflora             | FROGFRUIT               | 24"             | 24"  | FULL, SPACE 30" ON CENTER  |
| POD MAC                 | 52  | Podocarpus macrophyllus      | PODOCARPUS HEDGE        | 24"             | 24"  | FULL, SPACE 24" ON CENTER TO CREATE CONT. HEDGE                    |
| *N PSY NER              | 37  | Psychotria nervosa           | WILD COFFEE             | 36"             | 36"  | FULL, SPACE 36" TO CREATE CONT. HEDGE                              |
| SAL ULI                 | 114 | Salvia uliginosa             | BOG SAGE                | 16"             | 16"  | FULL, SPACE 16" ON CENTER TO FILL SPACES                           |
| VIO SOR                 | XX  | Viola sororia                | BLUE VIOLET             | 24"             | 30"  | FULL, SPACE IN LOCATIONS SHOWN ON PLAN                             |

WHERE 'SOD' IS INDICATED SPECIES SHALL BE ST. AUGUSTINE 'FLORATAM' VARIETY AND 'BAHIAGRASS SOD' SHALL BE ARGENTINE VARIETY BAHIA SOD  
 \*N - ABOVE DENOTES FLORIDA NATIVE SPECIES - SEE NATIVE PERCENTAGE CALCULATIONS IN TABULAR DATA CHART BELOW

BELOW IS AN AUTHORIZED DIGITAL SIGNATURE AND SEAL OF THE PROFESSIONAL LISTED, BY WAY OF THIS SIGNATURE ATTTEST THAT THE DOCUMENTS HEREIN, IF UNDER A VERIFIED ELECTRONIC SEAL, WERE PREPARED, SIGNED AND AUTHORIZED FOR SUBMITTAL BY ME ON THE DATE OF SIGNING, WITH ALL AUTHORITY AND RIGHTS GRANTED TO ME BY THE STATE OF FLORIDA SS 481.303 PART II AND ASSOCIATED REFERENCES THEREIN.

LICENSED PROFESSIONAL  
 William Dale Bryant  
 FL LICENSE NUMBER  
 LA666943

| PROJECT # | DATE     | SCALE    | DESIGNED BY | DRAWN BY | CHECKED BY | W/DB | REVISIONS | DATE | BY |
|-----------|----------|----------|-------------|----------|------------|------|-----------|------|----|
| 23-105    | 09-11-23 | AS NOTED | WDB         | WDB      | WDB        |      |           |      |    |

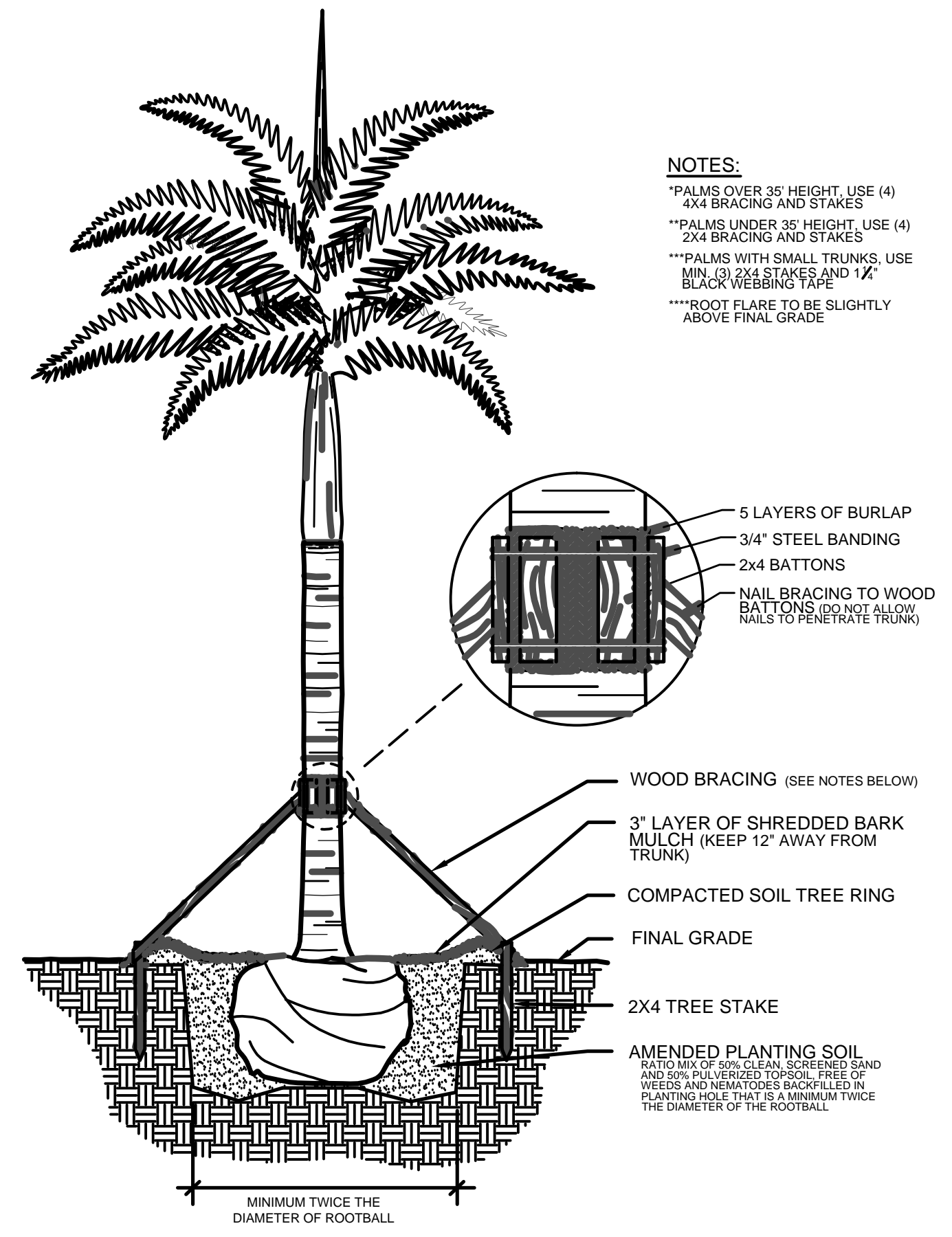
HOUSE OF KIRSCHNER  
 4110 Alton Road  
 Miami Beach, FL

GREEN EARTH  
 LANDSCAPE ARCHITECTURE, LLC  
 WILTON MANORS, FLORIDA  
 PHONE: 954-438-1825

LANDSCAPE PLANTING  
 PLAN GROUND LEVEL

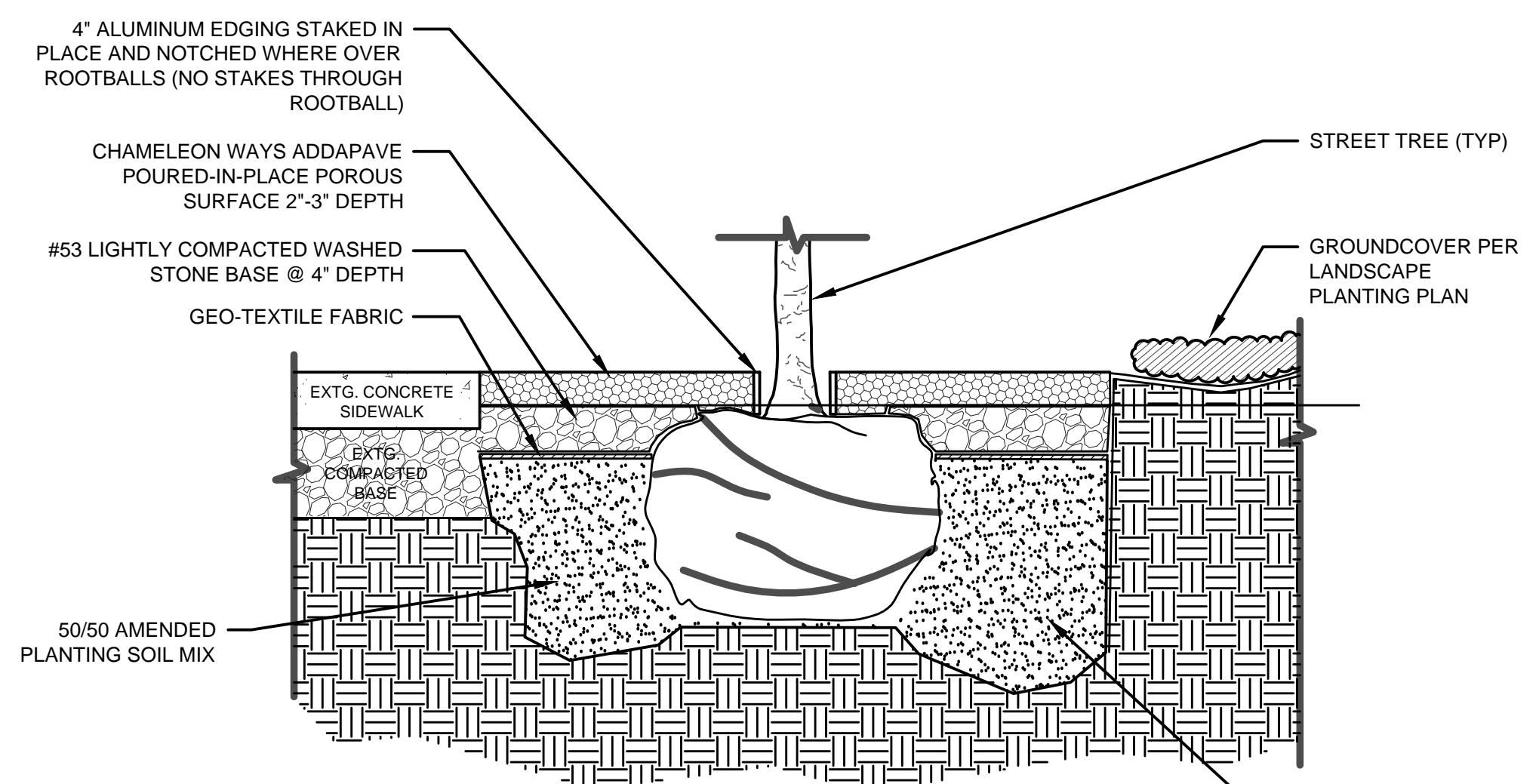
SHEET NUMBER  
 L-200

This document, together with the concepts and design presented herein, is an instrument of service, is intended only for the specific purpose and client for which it was prepared. Review of said instrument of service, in its entirety, shall be without liability to Green Earth Landscape Architecture, LLC.



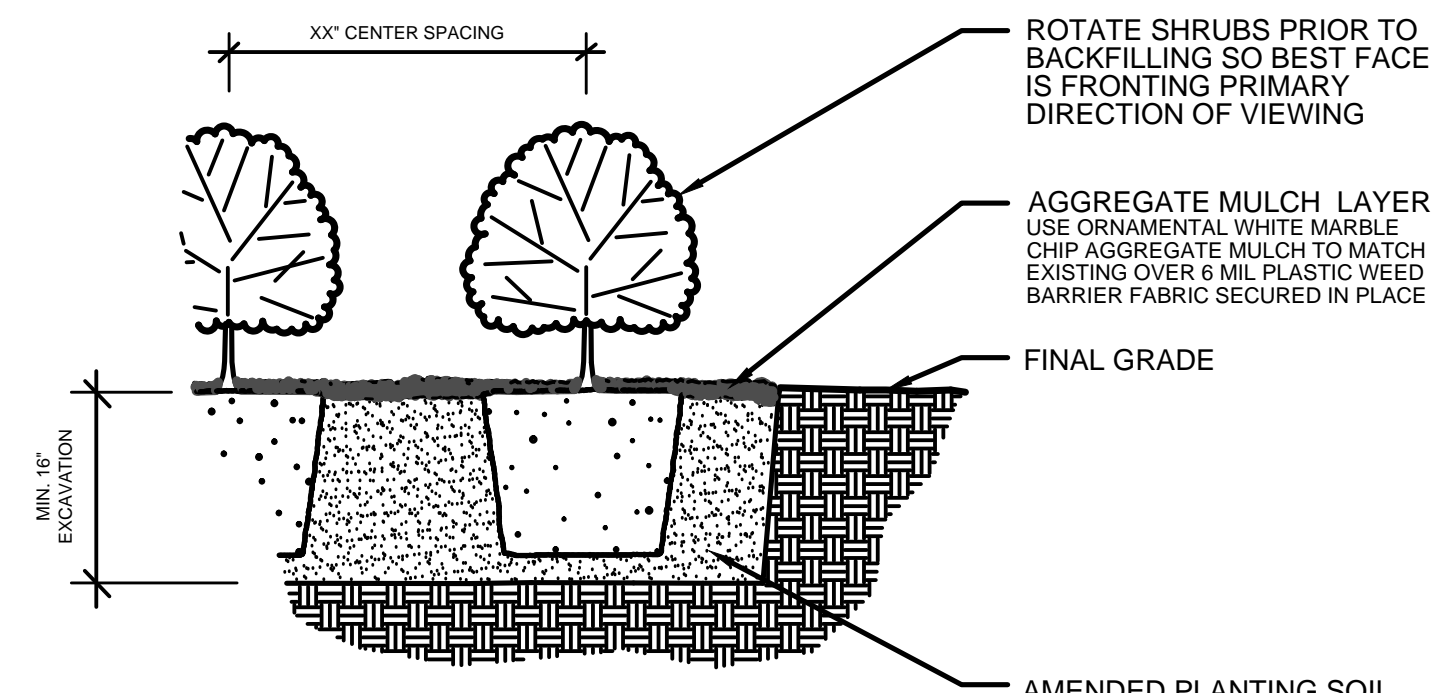
**NOTES:**  
 \*PALMS OVER 30' HEIGHT, USE (4) 4X4 BRACING AND STAKES  
 \*\*PALMS UNDER 30' HEIGHT, USE (4) 2X4 BRACING AND STAKES  
 \*\*\*PALMS WITH SMALL TRUNKS, USE MIN. (3) 2X4 STAKES AND 1 1/2" BLACK WEBBING TAPE  
 \*\*\*\*ROOT FLARE TO BE SLIGHTLY ABOVE FINAL GRADE

**1 PALM PLANTING DETAIL**  
SECTION N.T.S.

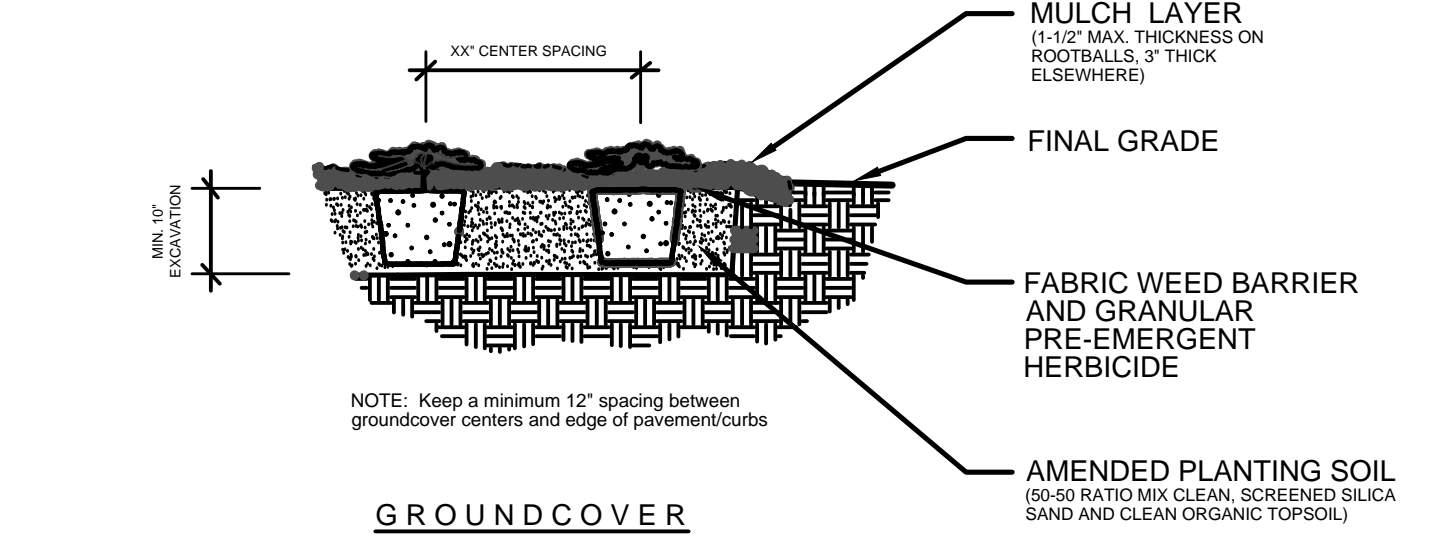


**NOTES:**  
 1. VERIFY 4' X 4' AT-GRADE PERVIOUS PLANTERS ARE CLEAR OF HARDSCAPE AS SCALED ON LANDSCAPE PLANTING PLAN AND SITE PLAN TO PREPARE FOR ADDAPAVE POROUS GRATE INSTALLATION. PLANTER DIMENSIONS WILL BEGIN AT EDGE OF EXISTING WALK FOR EACH STREET TREE; CENTER AS SHOWN ON PLANS  
 2. 1/2" X 4" BLACK POWDER COATED STEEL EDGING TO BE PROVIDED AT ALL ADDAPAVE EDGE CONDITIONS STAKED IN PLACE; WHERE EDGING TRAVERSES OVER TREE ROOTBALLS PLACE A BIO-DEGRADABLE SPACER BETWEEN EDGE OF TRUNKS AND STEEL EDGING TO PREVENT BOWING AND CONTINUE STAKES BEYOND ROOTBALL EDGES  
 3. GRAPHIC DETAIL IS FOR ILLUSTRATION PURPOSES ONLY; DO NOT SCALE THIS GRAPHIC FOR CONSTRUCTION  
 4. POROUS AGGREGATE SURFACING TO BE ADDAPAVE TP RESIN BOUND POROUS SURFACING CONSISTING OF AGGREGATE, FULLY COATED WITH TWO-PART CHEMICALLY CURING, UV STABLE, FLEXIBLE, CRYSTAL CLEAR RESIN, HAND FINISHED BY TROWEL AS SUPPLIED BY:  
 CHAMELEON WAYS, INC., PO BOX 387, CENTER VALLEY, PA 18034  
 TEL 877-426-5687 FAX 610-797-4654  
 email: info@chameleonways.com  
 INSTALLATION TO BE COMPLETED BY AN AUTHORIZED CHAMELEON WAYS, INC APPLICATOR

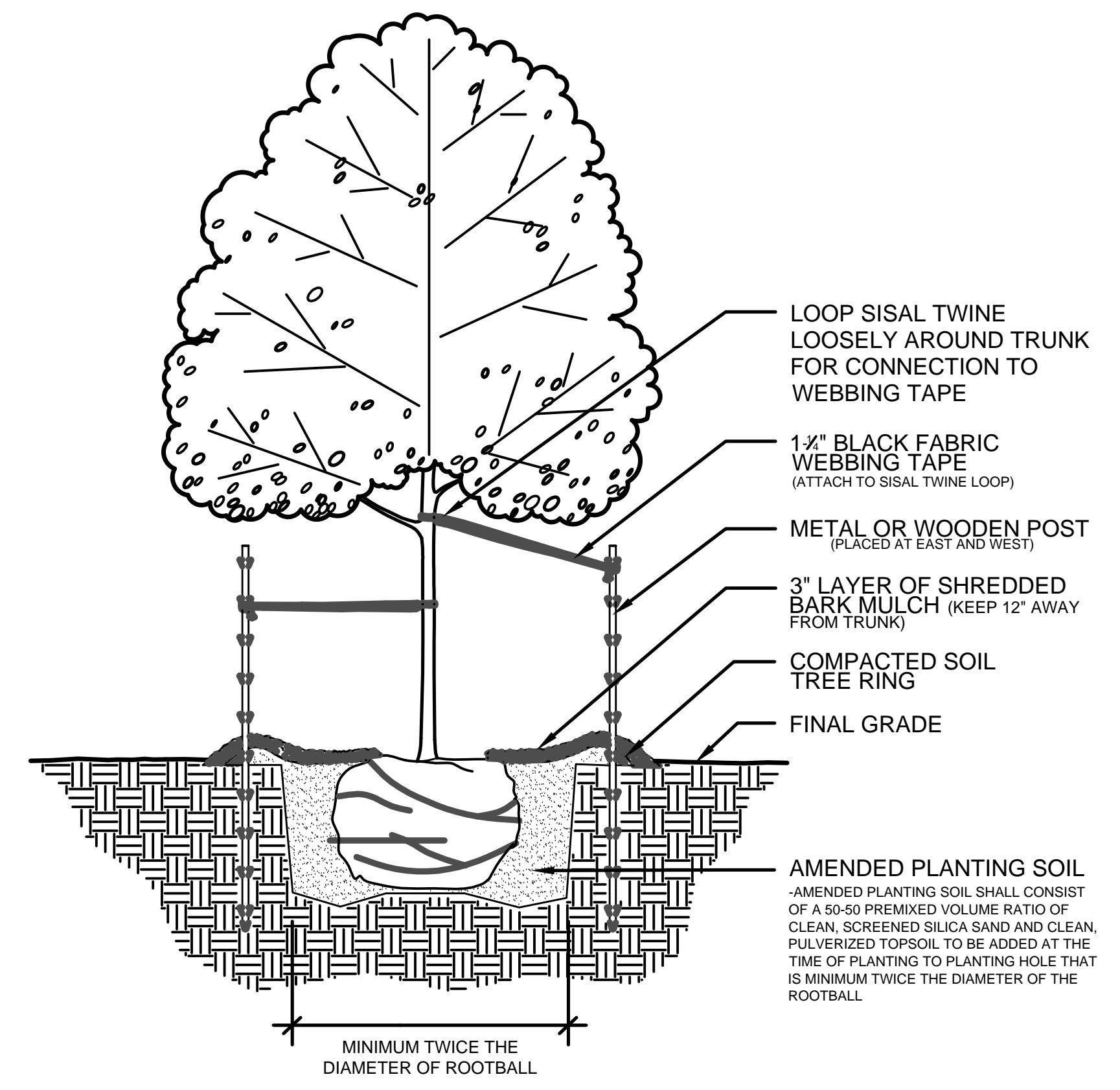
**2 ADDAPAVE POROUS PAVEMENT DETAIL**  
SECTION N.T.S.



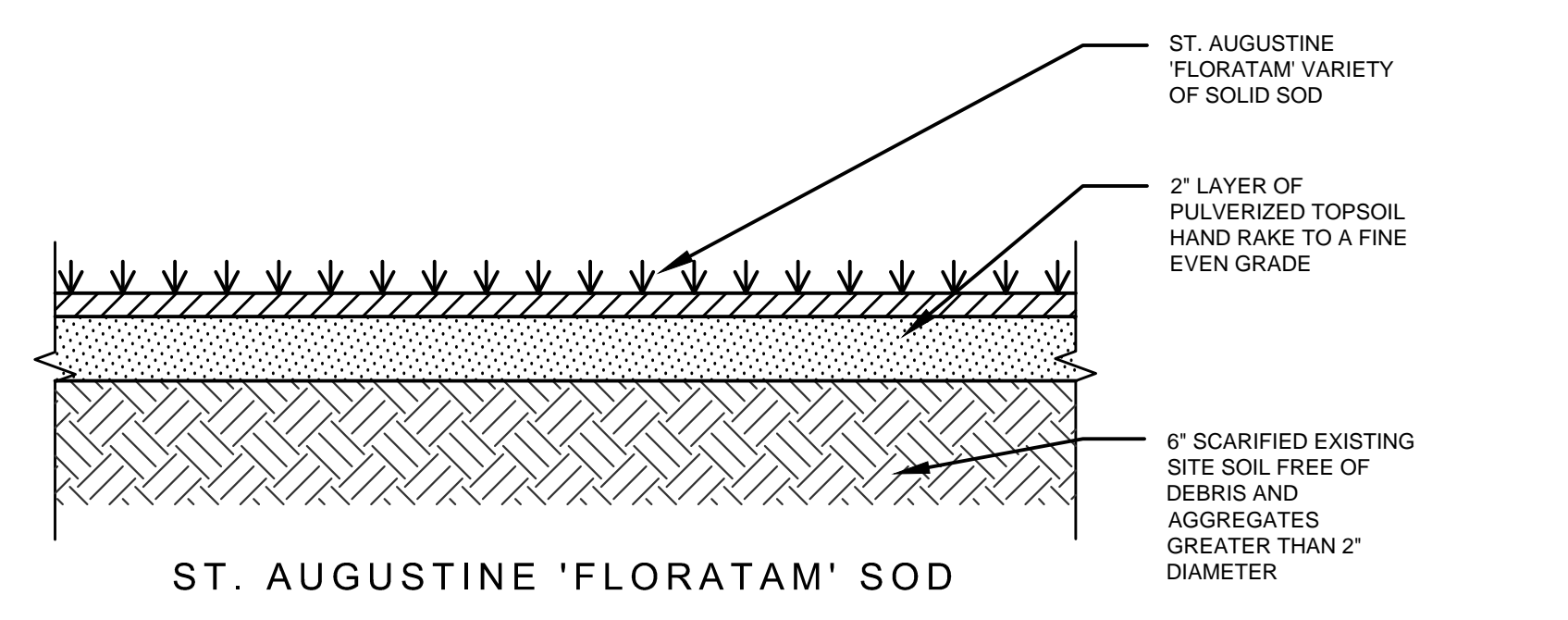
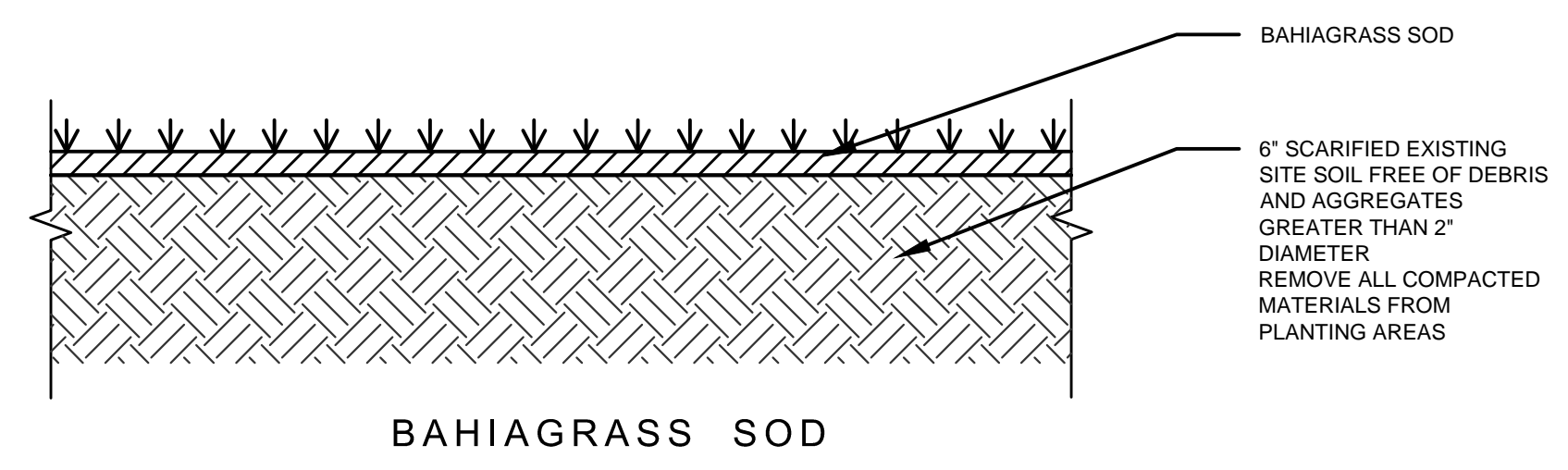
\*Note: For poor soil conditions directly adjacent to roadways or inside roadway medians, min. excavation depth shall be 16" or 5" deeper than bottom of rootball. Plant so tops of rootballs are slightly above final grade.



**3 SHRUB/GROUNDCOVER PLANTING DETAIL**  
SECTION N.T.S.



**4 TREE PLANTING DETAIL**  
SECTION N.T.S.



**5 SOD PLANTING DETAIL**  
SECTION N.T.S.

BELOW IS AN AUTHORIZED DIGITAL SIGNATURE AND SEAL OF THE PROFESSIONAL LISTED, BY WAY OF THIS SIGNATURE I ATTEST THAT THE DOCUMENTS HEREIN, IF UNDER A VERIFIED ELECTRONIC SEAL, WERE PREPARED, SIGNED AND AUTHORIZED FOR SUBMITTAL BY ME ON THE DATE OF SIGNING, WITH ALL AUTHORITY AND RIGHTS GRANTED TO ME BY THE STATE OF FLORIDA SS-401.305 PART II AND ASSOCIATED REFERENCES THEREIN.

LICENSED PROFESSIONAL  
 William Dale Bryant  
 FL LICENSE NUMBER  
 LA6666943

| PROJECT # | DATE     | DESIGNED BY | DRAWN BY | CHECKED BY | WDB | WDB | WDB | DATE | BY |
|-----------|----------|-------------|----------|------------|-----|-----|-----|------|----|
| 23-105    | 09-11-23 | AS NOTED    | WDB      | WDB        | WDB |     |     |      |    |

HOUSE OF KIRSCHNER  
 4110 Alton Road  
 Miami Beach, FL

MIAMI-DADE COUNTY  
 FLORIDA

GREEN EARTH  
 LANDSCAPE ARCHITECTURE, LLC  
 WILTON MANOR, FLORIDA  
 P.O. BOX 954433 MIAMI, FL 33195  
 PHONE 305-443-9855

LANDSCAPE  
 DETAILS

SHEET NUMBER  
 L-201