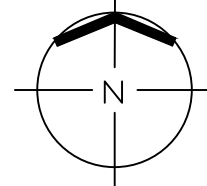


Landscape Plan  
1"=10'-0"

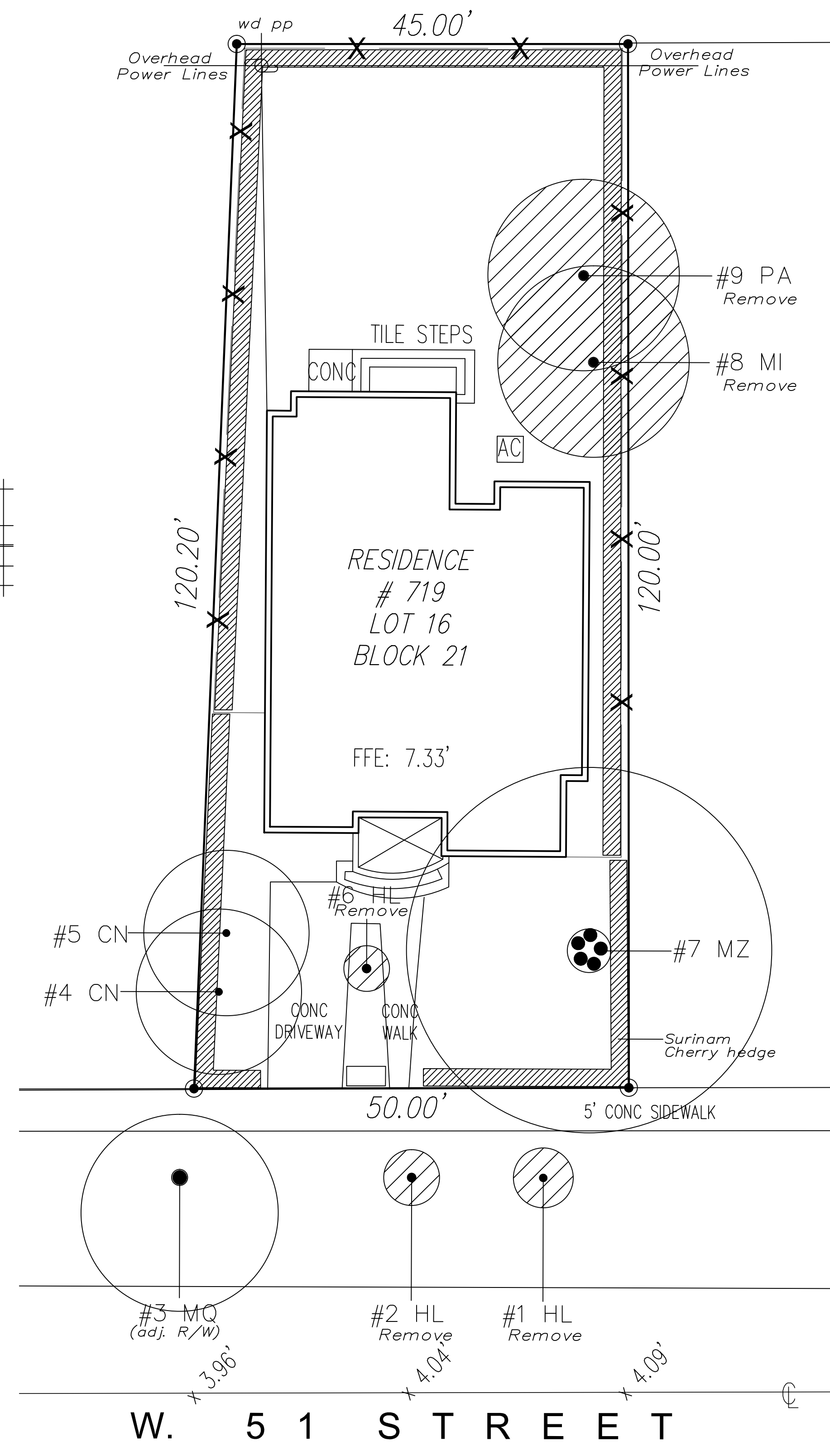


Tree Survey List										
Num	Botanical / Common Name	HT	DBH	Condition	Disposition	DBH	CRZ/FPZ	Notes		
#1 HL	Hymenocallis latifolia / Bottle Palm	R/W	11'	7"	16"	Good	-Remove-	N/A req. size	N/A	In Right of Way
#2 HL	Hymenocallis latifolia / Bottle Palm	R/W	10'	6"	15"	Good	-Remove-	N/A req. size	N/A	In Right of Way
#3 MD	Melaleuca quinquenervia / Melaleuca	R/W	30'	22'	17"	Good	-Remove-	N/A	N/A	Adj. Right of Way
#4 CN	Cocos nucifera / Coconut Palm		38'	19"	12"	Good	Remain		6"	
#5 CN	Cocos nucifera / Coconut Palm		34'	19"	9"	Good	Remain		5"	
#6 HL	Hymenocallis latifolia / Bottle Palm		7'	4"	10"	Poor	-Remove-	N/A req. size	N/A	
#7 MZ	Mangifera zapota / Sapodilla		38'	42"	60"	Good	Remain		5'	
#8 MI	Mangifera indica / Mango		34'	21"	11"	Good	-Remove-	11"	N/A	
#9 PA	Persea americana / Avocado		30'	22"	5,10"	Good	-Remove-	15"	N/A	

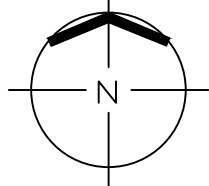
Total Tree DBH To Be Removed = 26"  
Total Palms To Be Removed = 0

Indicates Existing Tree/Palm To Remain  
 Indicates Existing Tree/Palm To Be Removed

Plant List				
QTY	KEY	Botanical / Common Name	Description/ Specification	Native Y/N
2	QV	Quercus virginiana / Live Oak	16' oa ht, 4" dbh, 7' spr.	Yes
3	CES	Conocarpus e. sericeus / Silver Buttonwood	12' oa ht, 2" dbh, 6' spr.	Yes



Tree Survey/Disposition Plan  
1"=10'-0"



A40003669  
 ANTHONY LEON  
 0016732

**3 DESIGN**  
 ARCHITECTURE  
 4900 Biscayne Blvd., #G-04, Miami, FL 33137  
 P: 305.438.9377 | F: 305.438.9379

H.L. Martin, Landscape Architect, P.A.  
 LCA #2000494 Lx #001722  
 9800 SW 98th Street, Miami, Florida 33156  
 305-790-4372, hmartin@hmartin.com  
 Herbert Lester Martin, Landscape Architect

SEAL

NEW CONSTRUCTION  
 AT:  
 719 W. 51 ST  
 MIAMI BEACH, FLORIDA

ISSUE DATE:  
 REVISIONS:

THESE PLANS ARE FOR BUILDING DEPARTMENT REVIEW ONLY. THEY ARE NOT TO BE CONSTRUCTED AS CONSTRUCTION DOCUMENTS UNTIL ALL BUILDING DEPARTMENT APPROVALS ARE OBTAINED.

