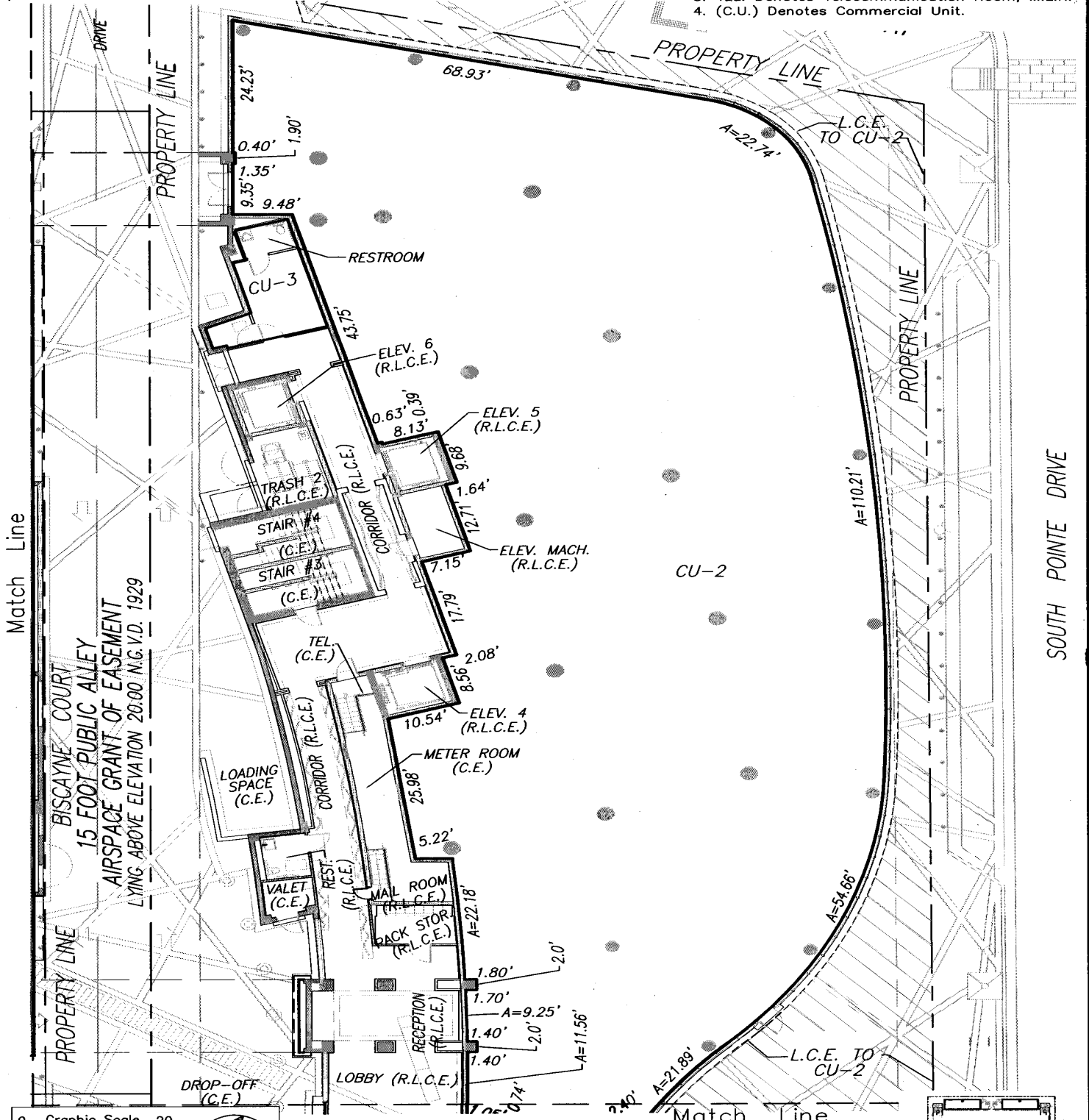


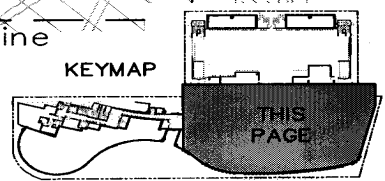
SURVEYOR'S NOTES :

1. Unless otherwise designated as a Unit, Residential Limited Common Element (R.L.C.E.) or L.C.E. (Limited Common Element), all improvements on this level are Common Elements.
2. All improvements on this level within the Garage Building are Common Elements. The CU-3 Parking Spaces are Limited Common Elements appurtenant to Unit CU-3. The Portofino Spaces are Common Elements available for use by a third party pursuant to the Restrictive Covenants (as defined in the Declaration). All other parking spaces are Common Elements or Limited Common Elements and the Developer reserves the right to assign any then unassigned parking space (other than one of the Portofino Spaces) to a particular unit as a limited common element.
3. TEL. Denotes Telecommunication Room, M.L.R.
4. (C.U.) Denotes Commercial Unit.



0 Graphic Scale 20
 1 inch = 20 feet
LEGEND
 — Denotes Unit Boundary

Lying Generally Between Elevations
 4.50' and 22.50' (NGVD29)
FIRST FLOOR
UNIT BOUNDARIES
MAREA, A CONDOMINIUM



Prepared By:
 Schwelbke Shiskin & Associates, Inc.
 Engineers, Surveyors, Planners
 3240 Corporate Way, Miramar, FL 33025
 Ph.(954)435-7010

City of Miami Beach, Florida

Page 13
 Exhibit 2

Prepared For:
 TRG-Alaska III, L.L.C.
 315 S. Biscayne Blvd
 Miami, FL 33131
 On July 30, 2015

