

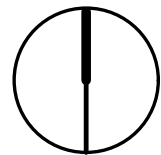
ELEVATION LEGEND

- 1 5/8" MIN. 2-COAT SMOOTH STUCCO FINISH. PAINTED. STUCCO TO BE FROM PRE-MIXED BAGS. PROVIDE BONDING AGENT OVER CONCRETE SURFACES TO RECEIVE STUCCO FINISH. ALLOW BONDING AGENT TO FULLY DRY / CURE PER MANUFACTURER'S SPECIFICATIONS PRIOR TO INSTALLATION OF STUCCO
- 2 1/2" WIDE HAND TOoled STUCCO REVEAL. TYPICAL AT ALL HORIZONTAL REVEALS AT WINDOW HEADER / SILL LINES. INSTALL WATERPROOFING PRIOR TO INSTALLATION OF REVEAL. SEE DETAILS ON
- 3 GREY TINTED GLASS FIXED IMPACT RESISTANT WINDOW IN ALUMINUM FRAME. WINDOWS TO MIAMI-DADE COUNTY NOA. FOR WINDOW SCHEDULE. SEE SHEETS
- 4 STEEL BEAM W/ ALUMINUM WRAP MATCHING WINDOW FRAME. ISOLATE CLADDING FROM STEEL
- 5 STEEL/CONCRETE COLUMN W/ ALUMINUM WRAP MATCHING WINDOW FRAME. ISOLATE CLADDING FROM STEEL
- 6 STAINLESS STEEL SCUPPER. PRIMARY DRAINAGE SEE DETAIL
- 7 STAINLESS STEEL SCUPPER. SECONDARY DRAINAGE SEE DETAIL
- 8 2"x8" STUCCO SCORE LINES
- 9 BUILDING SIGNAGE UNDER SEPARATE PERMIT. GC TO SUBMIT SHOP DRAWINGS THAT IDENTIFY EXACT LOCATION, SIZE, FONT, FINISH OF ALL COMPONENTS OF SIGNAGE AND ANCHORAGE FOR REVIEW BY ARCHITECT PRIOR TO FABRICATION. J BOX TO BE PROVIDED AT EACH SIGN LOCATION SHOWN. SEE ELECTRICAL DRAWINGS. SIGNAGE IN THESE DRAWINGS ARE INTENDED ONLY TO SHOW THE PROPOSED LOCATION OF THE SIGNAGE.
- 10 ALUMINUM FIXED LOUVERS WITH MIAMI-DADE COUNTY NOA & APPROVED FOR WIND DRIVEN RAIN BY GREENHECK OR EQUAL WITH BIRD / INSECT SCREEN @ INSIDE AND WITH 50% KYNAR FINISH 10 YR WARRANTY. LOUVERS MUST BE RATED FOR LARGE AND/OR SMALL MISSILE IMPACT. AS REQUIRED FOR SPECIFIC LOCATIONS AND MEET PRESSURE REQUIREMENTS SHOWN FOR SPECIFIC LOCATION AS SHOWN ON STRUCTURAL DRAWINGS.
- 11 GLASS & ALUMINUM IMPACT RESISTANT STOREFRONT DOOR WITH GREY TINTED GLASS
- 12 PERFORATED ALUM PANELS IN GARAGE WALL OPENINGS
- 13 CONCRETE CANOPY SLAB WITH STUCCO FINISH AT EDGES AND UNDERSIDE SURFACES. PAINTED
- 14 MIAMI DADE COUNTY APPROVED HOLLOW METAL DOOR IN HOLLOW METAL FRAME. PAINTED
- 15 42" MIN. HEIGHT GLASS RAILING IN ALUMINUM FRAME. USE CLEAR GLASS. ALUMINUM FRAME TO MATCH WINDOW FRAME FINISH. RAILING SYSTEM TO HAVE MIAMI-DADE COUNTY APPROVAL. INCL. GC TO SUBMIT ENGINEERED SHOP DRAWINGS FOR ARCHITECT REVIEW PRIOR TO FABRICATION.
- 16 5/8" MIN. 2-COAT SMOOTH STUCCO FINISH. PLANTER WALLS, TYP. @ ALL PLANTERS
- 17 GLASS & ALUMINUM IMPACT RESISTANT STOREFRONT GLAZING SYSTEM WITH GREY TINTED GLASS
- 18 VENT CAP. SEE MECH. DWGS
- 19 ALUMINUM HANDRAILS. HORIZONTAL BANDS AND SCREENS

ELEVATION - NORTH



PROPOSED



PREVIOUSLY APPROVED

ARQUITECTONICA
 2900 Oak Avenue, Miami, FL 33133
 T 305.372.1812 F 305.372.1175

ALL DESIGNS INDICATED IN THESE DRAWINGS ARE PROPERTY OF ARQUITECTONICA INTERNATIONAL CORP. NO COPIES, TRANSMISSIONS, REPRODUCTIONS OR ELECTRONIC MANIPULATION OF ANY PORTION OF THESE DRAWINGS IN THE WHOLE OR IN PART ARE TO BE MADE WITHOUT THE EXPRESS WRITTEN AUTHORIZATION OF ARQUITECTONICA INTERNATIONAL CORP. DESIGN INTENT SHOWN IS SUBJECT TO REVIEW AND APPROVAL OF ALL APPLICABLE LOCAL AND GOVERNMENTAL AUTHORITIES HAVING JURISDICTION. ALL COPYRIGHTS RESERVED © 2019. THE DATA INCLUDED IN THIS STUDY IS CONCEPTUAL IN NATURE AND WILL CONTINUE TO BE MODIFIED THROUGHOUT THE COURSE OF THE PROJECTS DEVELOPMENT WITH THE EVENTUAL INTEGRATION OF STRUCTURAL, MEP AND LIFE SAFETY SYSTEMS. AS THESE ARE FURTHER REFINED, THE NUMBERS WILL BE ADJUSTED ACCORDINGLY.

FINAL SUBMITTAL
 7140 ABBOTT AVE, MIAMI
 BEACH, FL 33141

NORTH ELEVATION

SCALE: 1" = 30'-0"

DATE:
 06/04/20

A2-00

NORTH ELEVATION - RENDERED

7140 ABBOTT
7140 ABBOTT BLVD
MIAMI BEACH, FL 33141

SHEET TITLE:

PROJECT:

PROJECT NO.: 19-206
DRAWN BY: PV, DG
CHECKED BY: PV, JG
DATE: 2023-08-03

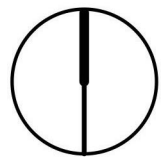
REV	DATE	DESCRIPTION	APPROVAL

REVISION TO DBR APPROVAL SHEET

A2-01

PROPOSED





PREVIOUSLY APPROVED

ARQUITECTONICA
 2900 Oak Avenue, Miami, FL 33133
 T 305.372.1812 F 305.372.1175

ALL DESIGNS INDICATED IN THESE DRAWINGS ARE PROPERTY OF ARQUITECTONICA INTERNATIONAL CORP. NO COPIES, TRANSMISSIONS, REPRODUCTIONS OR ELECTRONIC MANIPULATION OF ANY PORTION OF THESE DRAWINGS IN THE WHOLE OR IN PART ARE TO BE MADE WITHOUT THE EXPRESS WRITTEN AUTHORIZATION OF ARQUITECTONICA INTERNATIONAL CORP. DESIGN INTENT SHOWN IS SUBJECT TO REVIEW AND APPROVAL OF ALL APPLICABLE LOCAL AND GOVERNMENTAL AUTHORITIES HAVING JURISDICTION. ALL COPYRIGHTS RESERVED © 2019. THE DATA INCLUDED IN THIS STUDY IS CONCEPTUAL IN NATURE AND WILL CONTINUE TO BE MODIFIED THROUGHOUT THE COURSE OF THE PROJECTS DEVELOPMENT WITH THE EVENTUAL INTEGRATION OF STRUCTURAL, MEP AND LIFE SAFETY SYSTEMS. AS THESE ARE FURTHER REFINED, THE NUMBERS WILL BE ADJUSTED ACCORDINGLY.

FINAL SUBMITTAL
 7140 ABBOTT AVE, MIAMI
 BEACH, FL 33141

NORTH ELEVATION - RENDERED

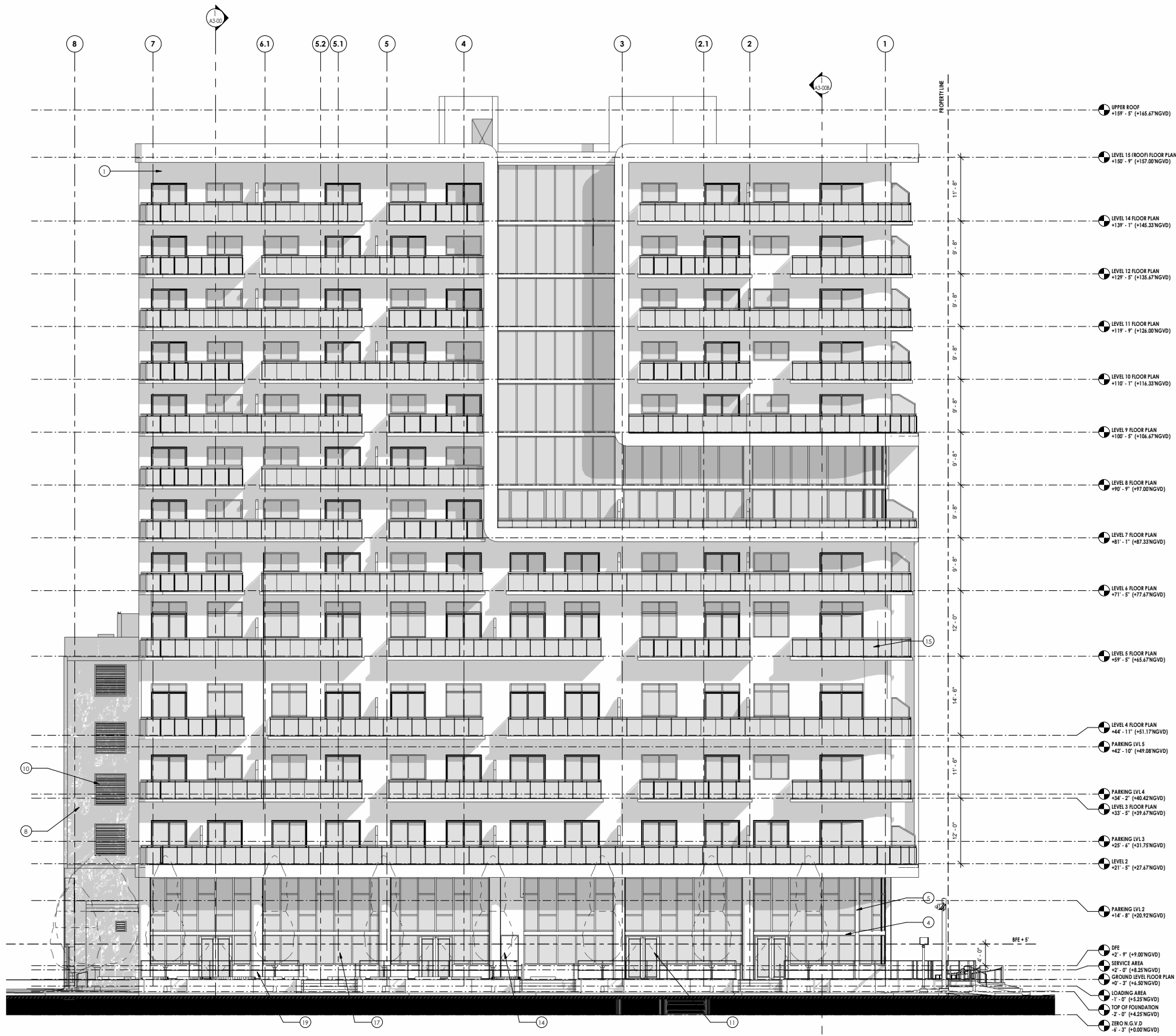
SCALE: 1"=30'-0"

DATE:
 06/04/20

A2-01

ELEVATION LEGEND

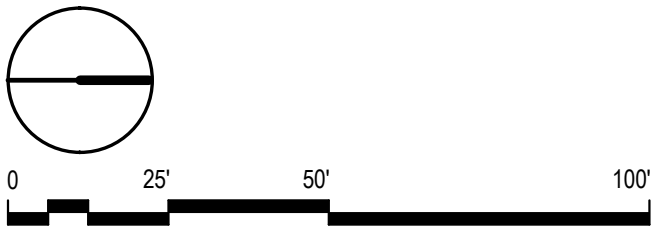
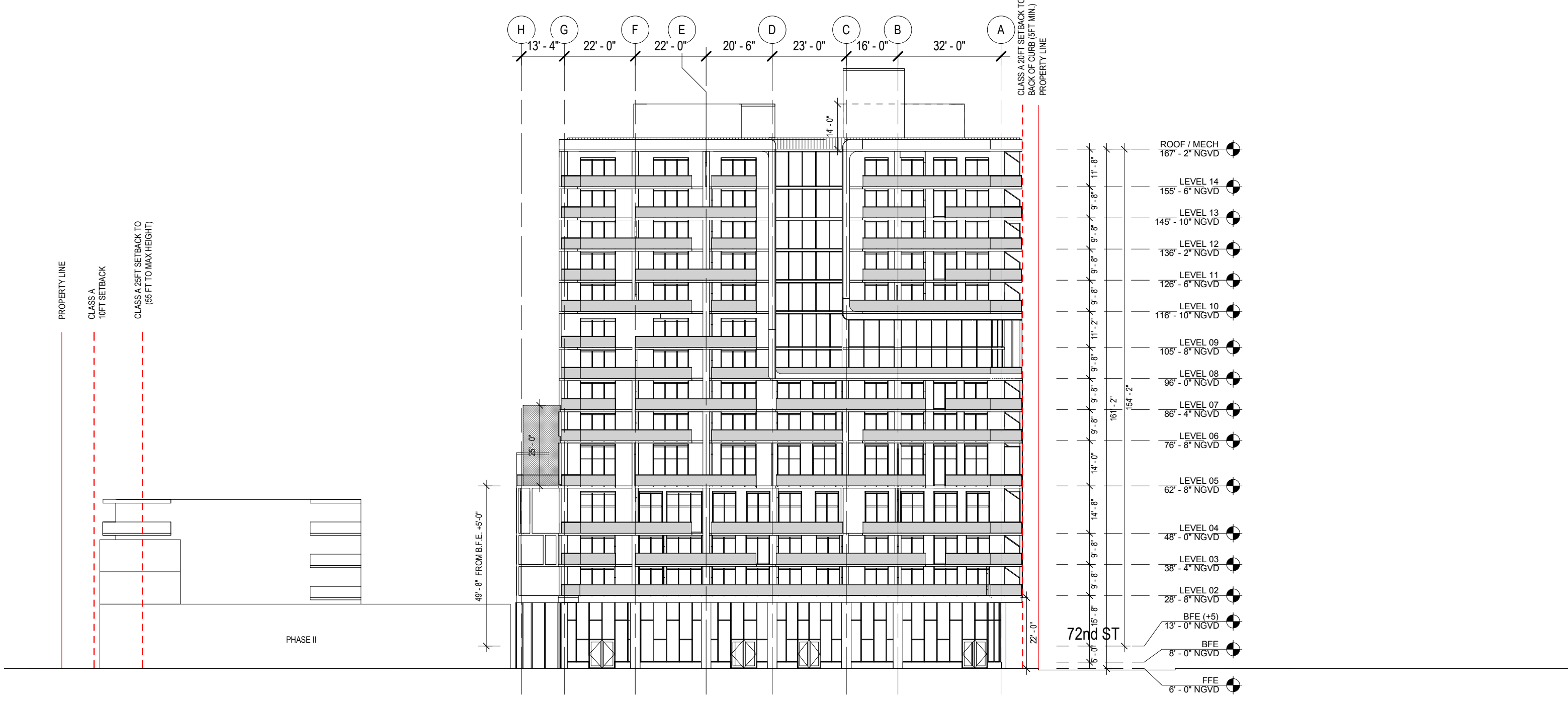
- 1 5/8" MIN. 2-COAT SMOOTH STUCCO FINISH. PAINTED. STUCCO TO BE FROM PRE-MIXED BAGS. PROVIDE BONDING AGENT OVER CONCRETE SURFACES TO RECEIVE STUCCO FINISH. ALLOW BONDING AGENT TO FULLY DRY / CURE PER MANUFACTURER'S SPECIFICATIONS PRIOR TO INSTALLATION OF STUCCO.
- 2 12" WIDE HAND TOoled STUCCO REVEAL. TYPICAL AT ALL HORIZONTAL REVEALS AT WINDOW HEADER / SILL LINES. INSTALL WATERPROOFING PRIOR TO INSTALLATION OF REVEAL. SEE DETAILS ON.
- 3 GREY TINTED GLASS FIXED IMPACT RESISTANT WINDOW IN ALUMINUM FRAME. WINDOWS TO MIAMI-DADE COUNTY NOA. FOR WINDOW SCHEDULE. SEE SHEETS.
- 4 STEEL BEAM W/ ALUMINUM WRAP MATCHING WINDOW FRAME. ISOLATE CLADDING FROM STEEL.
- 5 STEEL/CONCRETE COLUMN W/ ALUMINUM WRAP MATCHING WINDOW FRAME. ISOLATE CLADDING FROM STEEL.
- 6 STAINLESS STEEL SCUPPER. PRIMARY DRAINAGE SEE DETAIL.
- 7 STAINLESS STEEL SCUPPER. SECONDARY DRAINAGE SEE DETAIL.
- 8 2X 8" STUCCO SCORE LINES.
- 9 BUILDING SIGNAGE UNDER SEPARATE PERMIT. GC TO SUBMIT SHOP DRAWINGS THAT IDENTIFY EXACT LOCATION, SIZE, FONT, FINISH OF ALL COMPONENTS OF SIGNAGE AND ANCHORAGE FOR REVIEW BY ARCHITECT PRIOR TO FABRICATION. A BOX TO BE PROVIDED AT EACH SIGN LOCATION SHOWN. SEE ELECTRICAL DRAWINGS. SIGNAGE IN THESE DRAWINGS ARE INTENDED ONLY TO SHOW THE PROPOSED LOCATION OF THE SIGNAGE.
- 10 ALUMINUM FIXED LOUVERS WITH MIAMI-DADE COUNTY NOA & APPROVED FOR WIND DRIVEN RAIN BY GREENHECK OR EQUAL WITH BIRD / INSECT SCREEN @ INSIDE AND WITH 305 KYNAR FINISH TO FR WARRANTY. LOUVERS MUST BE RATED FOR LARGE AND/OR SMALL WINDS IMPACT AS REQUIRED FOR SPECIFIC LOCATIONS AND MEET PRESSURE REQUIREMENTS SHOWN FOR SPECIFIC LOCATION AS SHOWN ON STRUCTURAL DRAWINGS.
- 11 GLASS & ALUMINUM IMPACT RESISTANT STOREFRONT DOOR WITH GREY TINTED GLASS.
- 12 PERFORATED ALUM PANELS IN GARAGE WALL OPENINGS.
- 13 CONCRETE CANOPY SLAB WITH STUCCO FINISH AT EDGES AND UNDERSIDE SURFACES. PAINTED.
- 14 MIAMI DADE COUNTY APPROVED HOLLOW METAL DOOR IN HOLLOW METAL FRAME. PAINTED.
- 15 42" MIN. HEIGHT GLASS RAILING IN ALUMINUM FRAME. USE CLEAR GLASS. ALUMINUM FRAME TO MATCH WINDOW FRAME FINISH. RAILING SYSTEM TO HAVE MIAMI-DADE COUNTY APPROVAL. INCL. GC TO SUBMIT ENGINEERED SHOP DRAWINGS FOR ARCHITECT REVIEW PRIOR TO FABRICATION.
- 16 3/8" MIN. 2-COAT SMOOTH STUCCO FINISH PLANTER WALLS. TYP. @ ALL PLANTERS.
- 17 GLASS & ALUMINUM IMPACT RESISTANT STOREFRONT GLAZING SYSTEM WITH GREY TINTED GLASS.
- 18 VENT CAP. SEE MECH. DWGS.
- 19 ALUMINUM HANDRAILS. "HORIZONTAL BANDS AND SCREEN"



OVERALL ELEVATION - EAST



PROPOSED



PREVIOUSLY APPROVED

ARQUITECTONICA
 2900 Oak Avenue, Miami, FL 33133
 T 305.372.1812 F 305.372.1175

ALL DESIGNS INDICATED IN THESE DRAWINGS ARE PROPERTY OF ARQUITECTONICA INTERNATIONAL CORP. NO COPIES, TRANSMISSIONS, REPRODUCTIONS OR ELECTRONIC MANIPULATION OF ANY PORTION OF THESE DRAWINGS IN THE WHOLE OR IN PART ARE TO BE MADE WITHOUT THE EXPRESS WRITTEN AUTHORIZATION OF ARQUITECTONICA INTERNATIONAL CORP. DESIGN INTENT SHOWN IS SUBJECT TO REVIEW AND APPROVAL OF ALL APPLICABLE LOCAL AND GOVERNMENTAL AUTHORITIES HAVING JURISDICTION. ALL COPYRIGHTS RESERVED © 2019. THE DATA INCLUDED IN THIS STUDY IS CONCEPTUAL IN NATURE AND WILL CONTINUE TO BE MODIFIED THROUGHOUT THE COURSE OF THE PROJECTS DEVELOPMENT WITH THE EVENTUAL INTEGRATION OF STRUCTURAL, MEP AND LIFE SAFETY SYSTEMS. AS THESE ARE FURTHER REFINED, THE NUMBERS WILL BE ADJUSTED ACCORDINGLY.

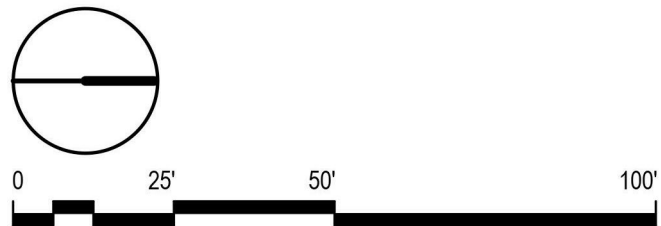
FINAL SUBMITTAL
 7140 ABBOTT AVE, MIAMI
 BEACH, FL 33141

EAST ELEVATION

SCALE: 1" = 30'-0"

DATE:
 06/04/20

A2-02



PREVIOUSLY APPROVED

ARQUITECTONICA
 2900 Oak Avenue, Miami, FL 33133
 T 305.372.1812 F 305.372.1175

ALL DESIGNS INDICATED IN THESE DRAWINGS ARE PROPERTY OF ARQUITECTONICA INTERNATIONAL CORP. NO COPIES, TRANSMISSIONS, REPRODUCTIONS OR ELECTRONIC MANIPULATION OF ANY PORTION OF THESE DRAWINGS IN THE WHOLE OR IN PART ARE TO BE MADE WITHOUT THE EXPRESS WRITTEN AUTHORIZATION OF ARQUITECTONICA INTERNATIONAL CORP. DESIGN INTENT SHOWN IS SUBJECT TO REVIEW AND APPROVAL OF ALL APPLICABLE LOCAL AND GOVERNMENTAL AUTHORITIES HAVING JURISDICTION. ALL COPYRIGHTS RESERVED © 2019. THE DATA INCLUDED IN THIS STUDY IS CONCEPTUAL IN NATURE AND WILL CONTINUE TO BE MODIFIED THROUGHOUT THE COURSE OF THE PROJECTS DEVELOPMENT WITH THE EVENTUAL INTEGRATION OF STRUCTURAL, MEP AND LIFE SAFETY SYSTEMS. AS THESE ARE FURTHER REFINED, THE NUMBERS WILL BE ADJUSTED ACCORDINGLY.

FINAL SUBMITTAL
 7140 ABBOTT AVE, MIAMI
 BEACH, FL 33141

EAST ELEVATION RENDERED

SCALE: 1"=30'-0"

DATE:
 06/04/20

A2-03