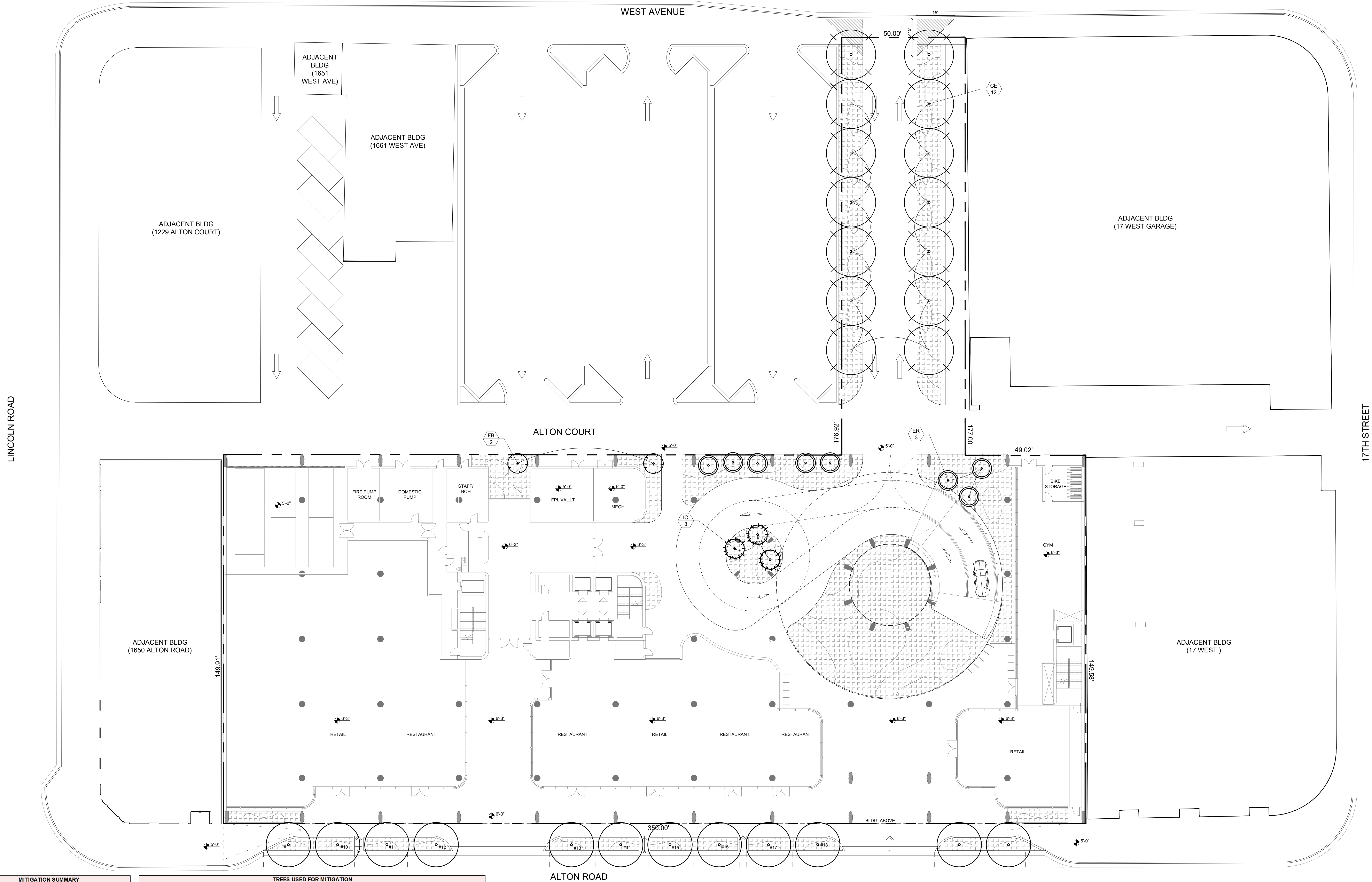


ISSUE	DATE
DRB FIRST SUBMITTAL	12/20/22
DRB SECOND SUBMITTAL	01/10/23
DRB FINAL SUBMITTAL	08/07/23



MITIGATION SUMMARY	
TOTAL DBH (IN) REMOVED	TOTAL PALMS REMOVED
55"	7

TREES USED FOR MITIGATION					
SYM	QTY	SCIENTIFIC NAME	COMMON NAME	NATIVE	NOTES
CE	12	<i>Conocarpus erectus</i>	GREEN BOTTONWOOD	Y	MIN 10" DBH, 16' CANOPY, 25' HT
ER	3	<i>Eugenia rhombica</i>	RED STOPPER	Y	MIN 4" DBH, 8' CANOPY, 16' HT
IC	3	<i>Ilex cassine</i>	DAHOON HOLLY	Y	MIN 4" DBH, 8' CANOPY, 16' HT
FB	2	<i>Ficus binnendijkii</i> 'Alii'	LONG LEAVED FIG	N	MIN 4" DBH, 8' CANOPY, 16' HT
TOTAL:	20	TREES USED FOR MITIGATION DIVIDED IN 4 SPECIES 20 NATIVE TREES (80% NATIVE)			

THE REMOVAL OF 55" OF DBH AND 7 PALMS EQUIVALENT TO:
27 REPLACEMENT TREES (MIN. 2" DBH, 8' CANOPY, 12' HT), OR
14 REPLACEMENT TREES (MIN. 4" DBH, 8' CANOPY, 16' HT)
14 TREES (AT 12' HT, 8' SP, 2" DBH) OR 7 TREES (AT 16' HT, 8' SP, 4" DBH) MUST BE NATIVE (50% OF REQUIRED TREES)

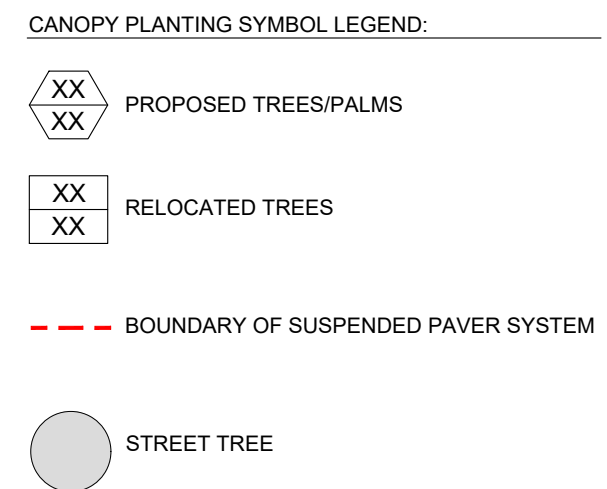
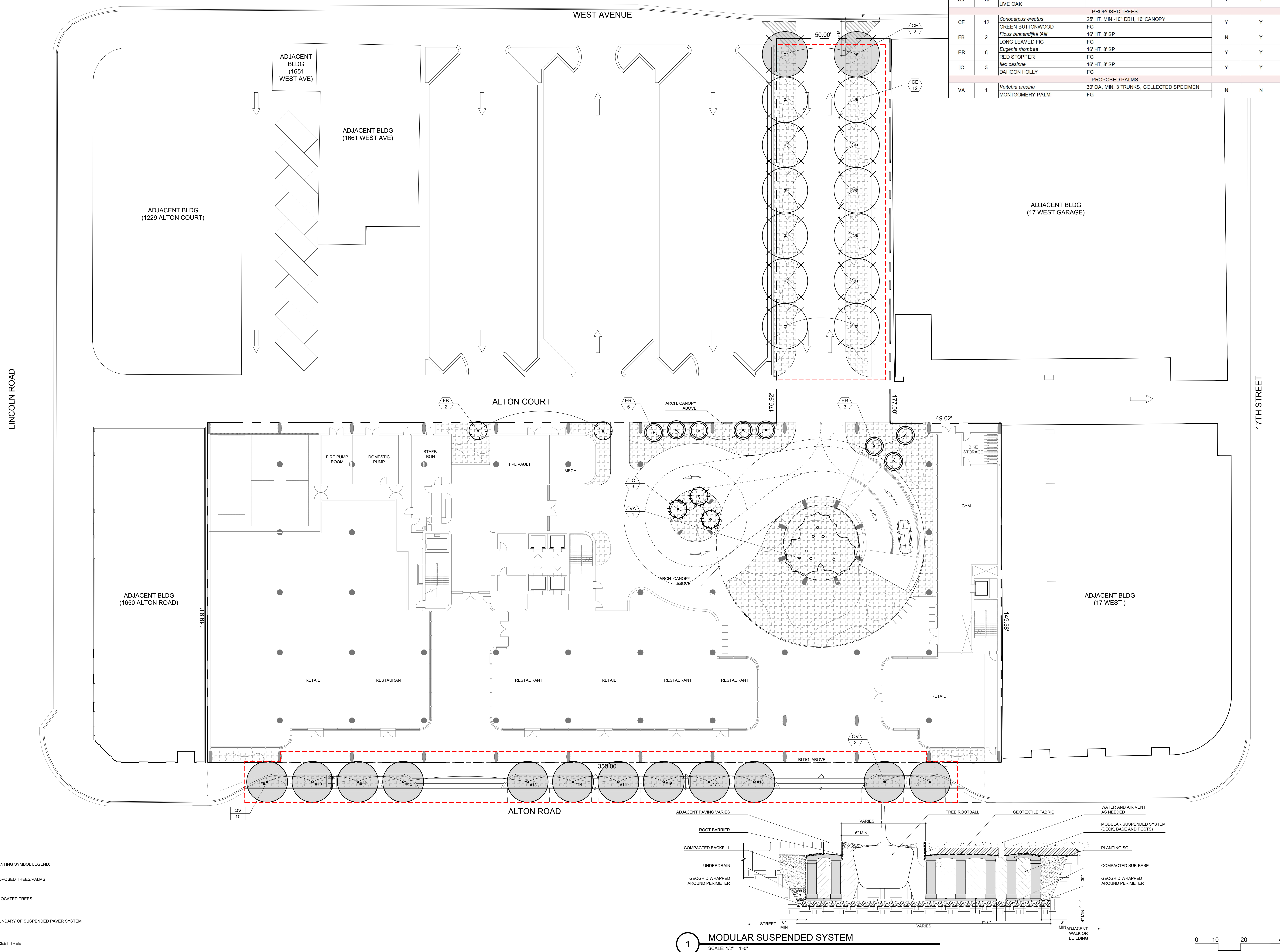
SPECIES DIVERSITY:
21-30 REQUIRED TREES: 4 SPECIES

THE CODE (NEW ORDINANCE) IS BEING MET BY USING:
20 TREES (MIN. 4" DBH, 8' CANOPY, 16' HT)

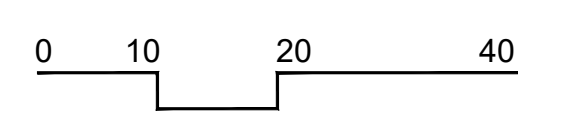
MITIGATION SYMBOL LEGEND:
XX PROPOSED MITIGATION TREES

ISSUE	DATE
DRB FIRST SUBMITTAL	12/20/22
DRB SECOND SUBMITTAL	01/10/23
DRB FINAL SUBMITTAL	08/07/23

CANOPY PLANTING SCHEDULE - THE ALTON, MIAMI BEACH					
SYMBOL	QTY	PROPOSED MATERIAL	DESCRIPTION AND NOTES	NATIVE	DROUGHT TOLERANT
PROPOSED STREET TREES					
CE	2	<i>Conocarpus erectus</i> GREEN BUTTONWOOD FG	25' HT. MIN - 10" DBH, 16' CANOPY	Y	Y
QV	2	<i>Quercus virginiana</i> LIVE OAK FG	25' HT. MIN. 8" DBH (TO MATCH EXISTING)	Y	Y
RELOCATED STREET TREES					
QV	10	<i>Quercus virginiana</i> LIVE OAK	#9, #10, #11, #12, #13, #14, #15, #16, #17, #18	Y	Y
PROPOSED TREES					
CE	12	<i>Conocarpus erectus</i> GREEN BUTTONWOOD FG	25' HT. MIN - 10" DBH, 16' CANOPY	Y	Y
FB	2	<i>Ficus binnendijkii</i> 'Alir' LONG LEAVED FIG FG	16' HT, 8' SP	N	Y
ER	8	<i>Eugenia rhombica</i> RED STOPPER FG	16' HT, 8' SP	Y	Y
IC	3	<i>Ilex cassine</i> DAHOOB HOLLY FG	16' HT, 8' SP	Y	Y
PROPOSED PALMS					
VA	1	<i>Veitchia arccina</i> MONTGOMERY PALM FG	30' OA. MIN. 3 TRUNKS, COLLECTED SPECIMEN	N	N



1 MODULAR SUSPENDED SYSTEM
SCALE: 1/2" = 1'-0"



SITE ADDRESS:

1656 - 1680 ALTON ROAD &
1677 WEST AVENUE
MIAMI BEACH, FL 33139

LANDSCAPE ARCHITECT:

CLAD
8020 NE 4TH AVE, STUDIO 113
MIAMI, FL 33138
(786) 536-6076
INFO@CLADLANDSCAPE.COM

SEAL:

CAROLINA MONTEIRO DA SILVA
REGISTERED LANDSCAPE ARCHITECT
LA6667311

DRAWING TITLE:

**UNDERSTORY PLANTING
PLAN + SCHEDULE
- GROUND FLOOR**

© 2022 CLAD, LLC

REVISIONS:

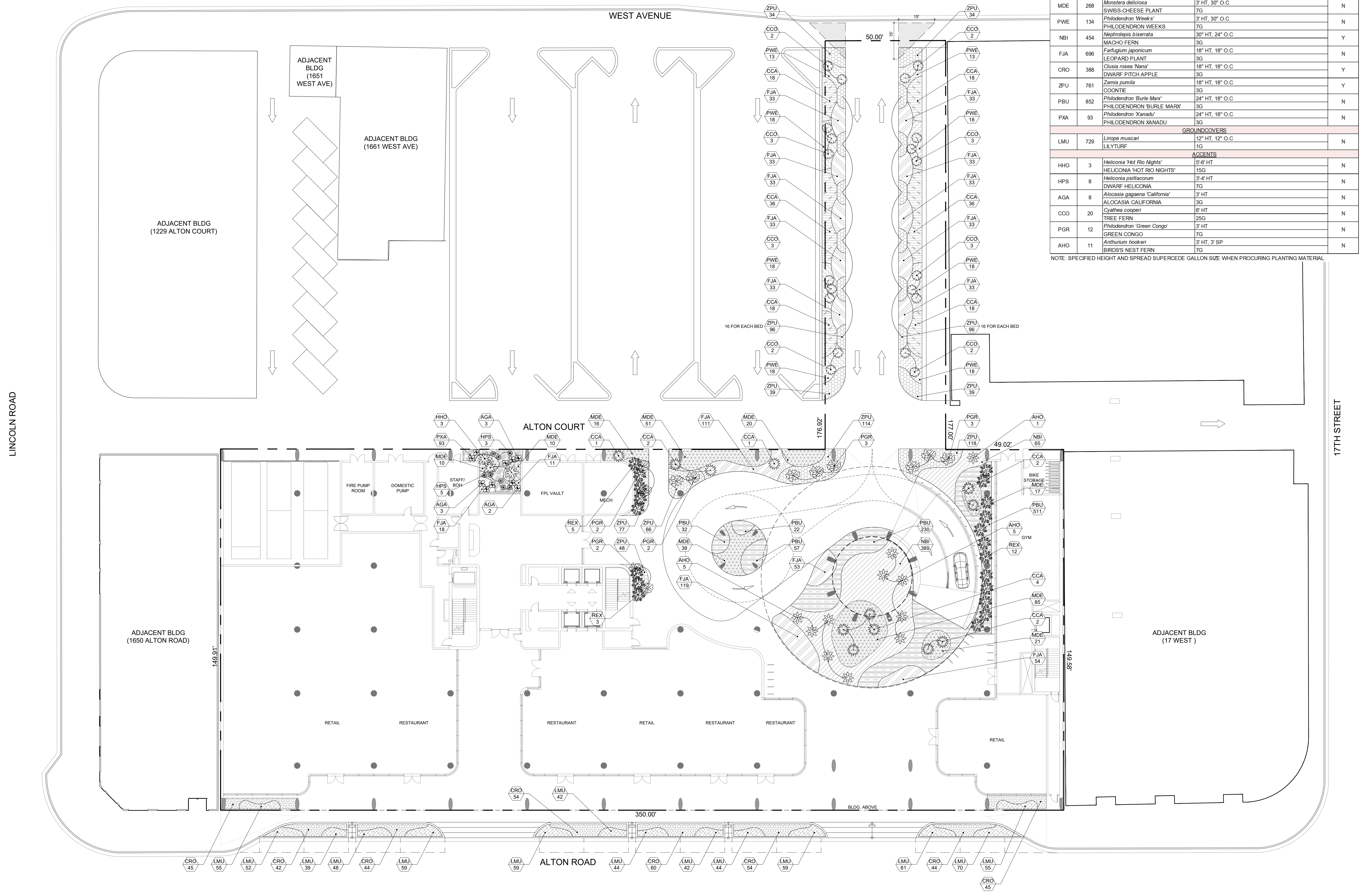
ISSUE	DATE
DRB FIRST SUBMITTAL	12/20/22
DRB SECOND SUBMITTAL	01/10/23
DRB FINAL SUBMITTAL	08/07/23

SCALE:
1/16" = 1'-0"

PROJ. N°:
2232
SHEET N°:
L-5.1

UNDERSTORY PLANTING SCHEDULE - THE ALTON, MIAMI BEACH				
SYMBOL	QTY	PROPOSED MATERIAL	DESCRIPTION AND NOTES	NATIVE
LARGE SHRUBS				
REX	20	<i>Rhapis excelsa</i> LADY PALM	6' HT. 4' SP. SPACING AS SHOWN. FULL TO BASE	N
SHRUBS				
CCA	156	<i>Chamaedorea cataractarum</i> CAT PALM	3' HT. 30" O.C	N
MDE	268	<i>Monstera deliciosa</i> SWISS-CHEESE PLANT	3' HT. 30" O.C	N
PWE	134	<i>Philodendron 'Weeks'</i> PHILODENDRON WEEKS	3' HT. 30" O.C	N
NBI	454	<i>Nepenthes bicalcarata</i> MACHO FERN	30" HT. 24" O.C	Y
FJA	696	<i>Fatigium japonicum</i> LEOPARD PLANT	18" HT. 18" O.C	N
CRO	388	<i>Clusia rosea 'Nana'</i> DWARF PITCH APPLE	18" HT. 18" O.C	Y
ZPU	761	<i>Zamia pumila</i> COONTIE	18" HT. 18" O.C	Y
PBU	852	<i>Philodendron 'Burlie Marx'</i> PHILODENDRON 'BURLIE MARX'	24" HT. 18" O.C	N
PXA	93	<i>Philodendron 'Xanadu'</i> PHILODENDRON XANADU	24" HT. 18" O.C	N
GROUNDCOVERS				
LMU	729	<i>Liriope muscari</i> LILYTURF	12" HT. 12" O.C	N
ACCENTS				
HHO	3	<i>Heliconia 'Hot Rio Nights'</i> HELICONIA 'HOT RIO NIGHTS'	5'-6" HT	N
HPS	8	<i>Heliconia psittacorum</i> DWARF HELICONIA	3'-4" HT	N
AGA	8	<i>Alocasia gageana 'California'</i> ALOCASIA CALIFORNIA	3' HT	N
CCO	20	<i>Cyathea cooperi</i> TREE FERN	6' HT	N
PGR	12	<i>Philodendron 'Green Congo'</i> GREEN CONGO	3' HT	N
AHO	11	<i>Anthurium hookeri</i> BIRDS'S NEST FERN	3' HT. 3' SP	N

NOTE: SPECIFIED HEIGHT AND SPREAD SUPERCEDE GALLON SIZE WHEN PROCURING PLANTING MATERIAL.



UNDERSTORY PLANTING SYMBOL LEGEND:
XX PROPOSED SHRUBS, GROUNDCOVERS & ACCENTS

0 10 20 40

