





169 E FLAGLER ST. SUITE 727 MIAMI, FL, 33131
P. 786.598.7260

CLIENT

FIFTEEN GROUP

801 ARTHUR GODFREY ROAD,
MIAMI BEACH, FL 33140

CONSULTANTS

MEP CONSULTANT:
MG ENGINEERING-FL, CORP.
300 SOUTH PARK RD, SUITE 140
HOLLYWOOD, FL 33021
P. 305.755.3833

STRUCTURAL
YHCE
99 NW 27TH AVE
MIAMI, FL 33125
P.305.969.9423

SEAL / SIGNATURE

ISSUES

DESCRIPTION REVISION NUMBER DATE

ISSUED FOR PRICING 05/19/23
100% LANDLORD REVIEW 05/01/23

FILE INFORMATION

Project No: 9910.01
Drawn By: MS
Checked By: LM
Project Phase:

SHEET NAME

ELECTRICAL
LIGHTING PLAN



SCALE
3/16" = 1'-0"

E-101

- OF -

© 2020 OTJ Architects, Inc.

LIGHTING PLAN NOTES:

- ALL LIGHTING, EXCEPT FOR NIGHT LIGHT AND EXIT SIGNS SHALL BE AUTOMATICALLY CONTROLLED BY OCCUPANCY SENSORS, U.O.N.
- SWITCHING DESIGNATIONS ARE SHOWN BY THE LOWER CASE LETTER NEXT TO THE LIGHTING FIXTURE. PROVIDE ALL DIGITAL SWITCHES AS INDICATED. MULTIPLE SWITCHES TO BE GANGED WITH COMMON MULTIGANG FACPLATE. U.O.N. COORDINATE LOCATION OF ALL LIGHT SWITCHES AND LIGHTING GROUPS CONTROLLED WITH ARCHITECT BEFORE ANY WORK. ELECTRICAL CONTRACTOR TO FOLLOW ARCHITECT SWITCHING ARRANGEMENT. INDICATE ADJUSTMENTS TO ELECTRICAL ENGINEER.
- ALL LIGHTING FIXTURES CONTROLLED BY A DIMMER SWITCH SHALL BE PROVIDED WITH DIMMING BALLAST AND WIRED TO A CIRCUIT HAVING DEDICATED NEUTRAL WIRE. PROVIDE DIMMING BALLAST WITH 0-10V TYPE.
- THE FOLLOWING DESIGN IS INTENDED TO FOLLOW THE APPLICABLE CODES OF THE NEC 2017 FBC 2020 7TH EDITION
- THE MEANS OF EGRESS ILLUMINATION SHALL NOT BE LESS THAN 1 FOOTCANDLE AT THE WALKING SURFACE PER FBC 1008 FOR THE AREA OF WORK SHOWN.
- EMERGENCY LIGHTS AND EXIT SIGNS SHALL BE CONNECTED AHEAD OF ANY LOCAL SWITCH IN THE SAME BRANCH CIRCUIT SERVING THE AREA PER NEC 700.12.
- COMMERCIAL BUILDING AND TENANT SPACES SHALL COMPLY WITH SECTION FBC 2020 C405 ELECTRICAL POWER AND LIGHTING SYSTEMS.
- OCCUPANT SENSOR CONTROL FUNCTION SHALL COMPLY WITH FBC 2020 C405.2.1.1
- CONNECT EXIT SIGNS, NIGHT LIGHTS AND OCCUPANCY SENSOR AHEAD OF LOCAL SWITCH (TYP.)

KEY NOTES:

- EXISTING LIGHTING TO BE REMOVED AND REPLACED WITH NEW. ALL 277V FIXTURES SHALL BE CONNECTED TO EXISTING 277/480V PANEL 'X' IN BUILDING ELECTRICAL CLOSET. ALL 120V FIXTURES SHALL BE CONNECTED TO EXISTING 120/208V PANEL 'B' IN EXISTING ELECTRICAL CLOSET. ALL EXIT SIGNS SHALL BE PROVIDED WITH UL 924 90 MINUTE EMERGENCY BATTERY PACK WITH TEST SWITCH. ALL FIXTURES DENOTED WITH 'EM' SHALL BE CONNECTED THROUGH LIGHTING INVERTER. ALL EXIT SIGNS SHALL BE CONNECTED AHEAD OF ALL SWITCHING AND CONTROLS. REFER TO ARCHITECTURAL DRAWINGS FOR EXACT QUANTITIES AND LOCATIONS OF EXIT SIGNS.
- OCCUPANCY SENSORS USED FOR LIGHTING IN THE PATH OF EGRESS SHALL MEET THE REQUIREMENTS OUTLINED IN NFPA 101, 7.8.1.2.2 AND NEED TO BE TIED IN TO THE FIRE ALARM SYSTEM. PROVIDE EMERGENCY LIGHTING RELAY WITH FIRE ALARM TIE IN FOR ALL SWITCHED LIGHTS IN THE PATH OF EGRESS. UPON ACTIVATION OF THE FIRE ALARM SYSTEM IT SHALL ACTIVATE LIGHTING OVERRIDE CONTROL RELAY TO TURN ON LIGHTING. INCLUDE EMERGENCY RELAY FOR EACH SWITCHED 'EM' ZONE WHICH WILL BYPASS OCCUPANCY SENSOR/DIMMING CONTROL FOR LIGHTS MARKED 'EM' TO FULL ON. EMERGENCY BYPASS RELAYS SHALL ALSO OPERATE ON A SIGNAL FROM THE FIRE ALARM SYSTEM.
- PANTRY/LOUNGE- PROVIDE MANUAL CONTROL WITH ON/OFF, VACANCY SENSOR AUTO-OFF WITHIN 15 MINUTES AFTER LAST OCCUPANT LEAVES SPACE.
- GARAGE INTERIOR- OCCUPANCY SENSOR AUTO-ON, OCCUPANCY SENSOR AUTO TO 50% WITHIN 15 MINUTES AFTER LAST OCCUPANT LEAVES SPACE, REMOTE MANUAL CONTROL, OCCUPANCY ZONE NO LARGER THAN 1,500 SQUARE FEET.
- LOBBY- TIMELOCK ON, MANUAL CONTROL WITH ON/OFF, PHOTOCELL AUTOMATIC DAYLIGHT RESPONSIVE DIMMING FOR DAYLIGHT AREAS, OCCUPANCY SENSOR AUTO TO 50% 15 MINUTES AFTER LAST OCCUPANT LEAVES SPACE, TIMELOCK OFF.
- ALL GROUND FLOOR AND EXTERIOR LIGHTING SHALL BE CONTROLLED THROUGH NEW LIGHTING CONTROL PANEL LCP IN BUILDING ELECTRICAL ROOM. REFER TO E-300 SERIES DRAWINGS FOR MORE INFORMATION.
- CONTRACTOR SHALL PROVIDE LIGHTING INVERTER FOR ALL FIXTURES DENOTED AS 'EM'. LOCATE IN BUILDING ELECTRICAL CLOSET. FOR INVERTER SPECIFICATION USE THE FOLLOWING: 107A 1835 LED 120V/0.5E 370WATT OR APPROVED EQUAL. INVERTERS SHALL BE UL 824 LISTED AND PROVIDE 90 MINUTES OF RUNTIME. PROVIDE WITH ONE (1) NORMALLY ON 20AMP OUTPUT CIRCUIT BREAKER, INTEGRAL TEST SWITCH AND FIRE ALARM CONNECTION.

REFER TO ARCHITECTURAL DRAWINGS FOR EXACT QUANTITIES AND LOCATIONS OF EXIT SIGNS. TYPICAL.

Christian Ortega
Design 1
Project: ARTHUR GODFREY ROAD LOBBY UPGRADES

1 [LCP] Panel LCP NXL-R-16a NEXLIGHT R SERIES PANEL 16 RELAY PANEL FOR ON/OFF CONTROL, INTEGRAL ASTRONOMIC TIMELOCK

1 [OPC] Sensor OPC NXL-OPC OUTDOOR PHOTOCCELL INTEGRATION PANEL, REMOTE MOUNTING

WIRE LEGEND - Design 1
LV Low Voltage
Low voltage cable

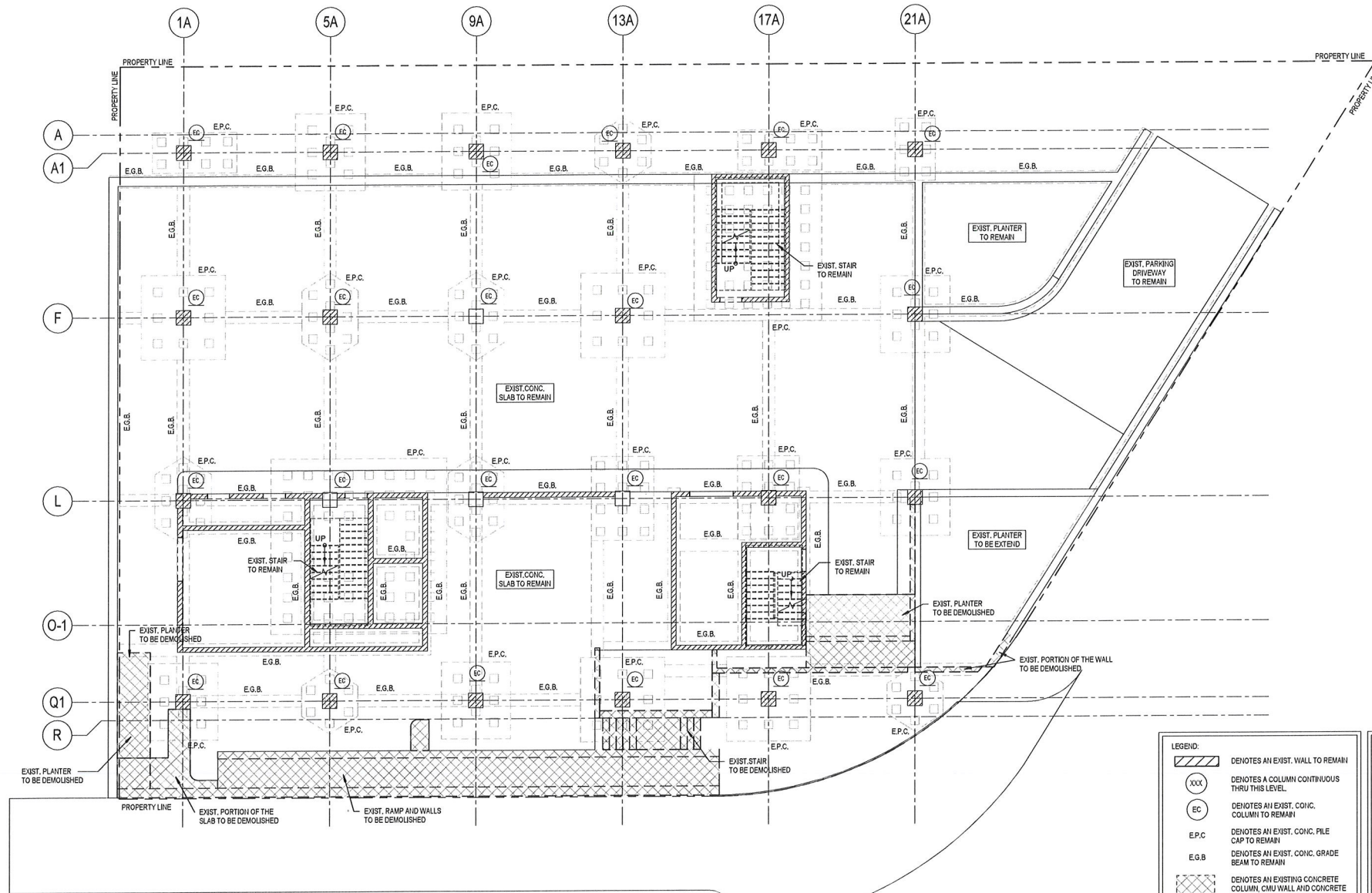
SCHEDULE - LIGHTING FIXTURES					
TYPE	DESCRIPTION	LAMP	MANUFACTURER	CATALOG#	COMMENTS
A	4" HEAD RECESSED LIGHT MOUNTED IN MAGNET TRACK SYSTEM	LED	CORONET	MAG PCK 35 MED BLK FL NA	
A1	MAGNET TRACK SYSTEM, RECESSED MOUNTED, BLACK FINISH. LENGTHS PER PLANS WITH FIELD VERIFICATION PRIOR TO RELEASE	LED	CORONET	MAGR TRK X DR90 DR90 UNV NA ** BLK	2-CIRCUIT TRACK, EACH CIRCUIT WITH REMOTE 0W-9-10V DIMMING DRIVER
B	DECORATIVE PENDANT	LED	KELVIX	SM3 X 3/8" V1 * S 187 / SW K AL CH SR 2M	120VOLT
C	LED UNDER STEP LIGHT STRIP	LED	KELVIX	SM3 X 3/8" V1 * S 187 / SW K AL CH SR 2M	PROVIDE 277/24V REMOTE DRIVER
F	4" HEAD LIGHT MODULE STANDALONE	LED	CORONET	3" MAG PCK 35 MED BLK X FL NA MAGR TRK 1FT DR90 UNV NA ** BLK	
G	LED UNDERCABINET LIGHT STRIP	LED	KELVIX	DK 35K 24W CH502A 2 * CP EC SW ULV30/96	SEE SHEET A-301 FOR LOCATION 120V
H	PLANTER LIGHTING	LED	INTERLUK		

FLORIDA DEPARTMENT APPROVAL NOTE
THIS PLAN IS APPROVED ONLY FOR WORK INDICATED ON THE APPLICATION SPECIFICATION SHEET. ALL OTHER MATTERS SHOWN ARE NOT TO BE RELIED UPON, OR TO BE CONSIDERED AS EITHER BEING APPROVED OR IN ACCORDANCE WITH APPLICABLE CODES

FLORIDA ENERGY CONSERVATION CODE
TO THE BEST OF MY KNOWLEDGE, BELIEF AND PROFESSIONAL JUDGMENT, THESE PLANS AND SPECIFICATIONS ARE IN COMPLIANCE WITH THE 2020 FLORIDA ENERGY CONSERVATION CODE.



MGE Engineering-FL, Corp. / no engineer success
300 South Park Rd, Suite 140, Hollywood, FL 33021
P. 305.755.3833 F. 305.200.5658 www.mgeus.net



FIRST FLOOR DEMOLITION PLAN
SCALE: 1/8" = 1'-0"

LEGEND:

	DENOTES AN EXIST. WALL TO REMAIN
	DENOTES A COLUMN CONTINUOUS THRU THIS LEVEL
	DENOTES AN EXIST. CONC. COLUMN TO REMAIN
	DENOTES AN EXIST. CONC. PILE CAP TO REMAIN
	DENOTES AN EXIST. CONC. GRADE BEAM TO REMAIN
	DENOTES AN EXISTING CONCRETE COLUMN, CMU WALL AND CONCRETE SLAB TO BE DEMOLISHED

NOTES:

1. ALL ELECTRICAL, MECHANICAL AND PLUMBING PENETRATIONS THROUGH STRUCTURAL MEMBERS SHALL BE COORDINATED BY THE GENERAL CONTRACTOR. LOCATION AND DIMENSIONS OF EQUIPMENTS TO BE VERIFIED BY SPECIFIC VENDOR PRIOR TO INSTALLATION. SPECIFIC VENDOR IS RESPONSIBLE FOR CHECKING ADEQUACY OF EQUIPMENT WEIGHTS WITH STATED LOADS USED FOR STRUCTURAL DESIGN. IF LOADS EXCEED THOSE, VENDOR WILL BE RESPONSIBLE FOR UPDATE THE DESIGN ACCORDINGLY. PERMITTING TASKS AND TRIMLINE COMPLIANCE ASSOCIATED WITH NEW DESIGN WILL BE VENDOR RESPONSIBILITY AS WELL.
2. DIMENSIONS SHOWN SHALL BE FIELD-VERIFIED. ANY DISCREPANCIES SHALL BE NOTED AND THE ENGINEER OF RECORD NOTIFIED BEFORE CONTINUING WITH THE WORK.
3. CONTRACTOR TO SUBMIT SIGNED AND SEALED CALCULATIONS AND SHOP DRAWINGS FOR THE POST-TENSIONED SLABS BY FLORIDA PROFESSIONAL ENGINEER BEFORE FABRICATION FOR APPROVAL BY THE ENGINEER OF RECORD TO SHOW COMPLIANCE WITH THE FLORIDA BUILDING CODE 2017 HVHZ EDITION.
4. TO THE BEST OF THE ENGINEER'S KNOWLEDGE, THE PLANS AND SPECIFICATIONS COMPLY WITH THE APPLICABLE MINIMUM BUILDING CODES AND THE APPLICABLE FIRE-SAFETY STANDARDS AS DETERMINED BY THE LOCAL AUTHORITY IN ACCORDANCE WITH SECTION 110.8.4.4 (FBC 2020, 7TH EDITION) AND CHAPTER 833, FLORIDA STATUTES.
5. STOREFRONT BY OTHERS UNDER A SEPARATE PERMIT. A SPECIALTY ENGINEER TO SUBMIT SHOP DRAWINGS AND CALCULATIONS TO E.O.R. FOR APPROVAL, PRIOR TO FABRICATION.

OTJ

169 E FLAGLER ST., SUITE 727 MIAMI, FL. 33131
P: 786.598.7260

CLIENT
801 ARTHUR GODFREY ROAD
801 ARTHUR GODFREY ROAD

CONSULTANTS
MEP CONSULTANT:
YCH ENGINEERING
99 NW 27 AVE
MIAMI FL., 33125
P: 305.969.9423

SEAL / SIGNATURE

ISSUES REVISION NUMBER	DESCRIPTION	DATE

FILE INFORMATION
Project No: H220320
Drawn By: Author
Checked By: Checker
Proj. Phase:

SHEET NAME
FIRST FLOOR DEMOLITION PLAN

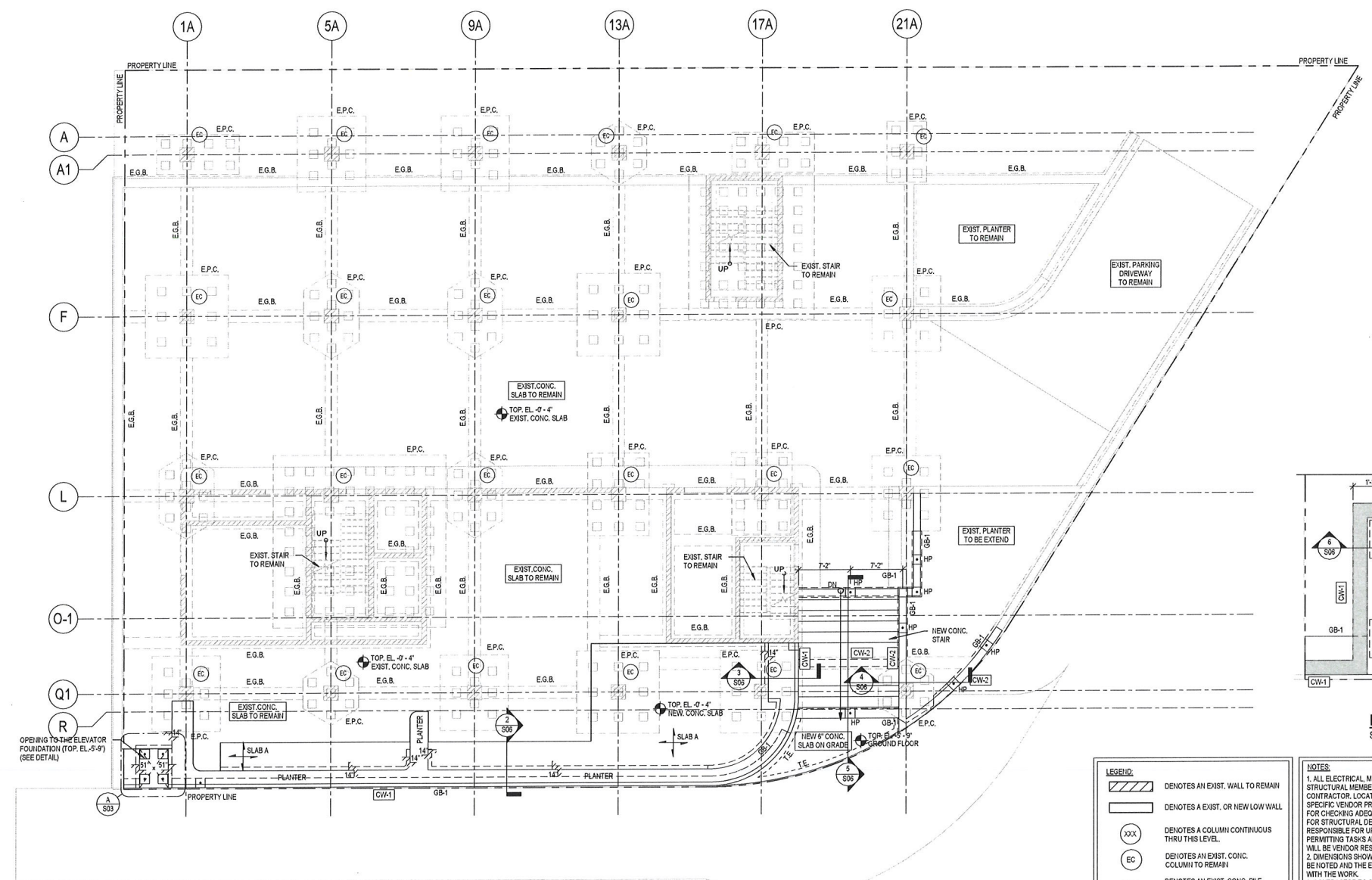
As indicated

S02

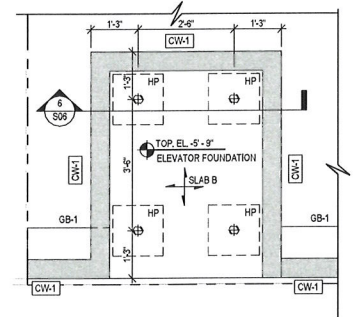
YCE
YOUSSEF HACHEM CONSULTING ENGINEERING, INC.
99 NW 27 AVE
MIAMI, FL. 33125
TEL: (786) 287-9120
FAX: (305) 969-9453
www.ychengineering.com

YOUSSEF H. HACHEM
LICENSE
No. 43302
STATE OF FLORIDA
PROFESSIONAL ENGINEER

YOUSSEF HACHEM, P.E., P.E.
No. 43302



FIRST FLOOR FRAMING PLAN
SCALE: 1/8" = 1'-0"



DETAIL A/S03
SCALE: 1/2" = 1'-0"

LEGEND:

	DENOTES AN EXIST. WALL TO REMAIN
	DENOTES AN EXIST. OR NEW LOW WALL
	DENOTES A COLUMN CONTINUOUS THRU THIS LEVEL.
	DENOTES AN EXIST. CONC. COLUMN TO REMAIN
	DENOTES AN EXIST. CONC. PILE CAP TO REMAIN
	DENOTES AN EXIST. CONC. GRADE BEAM TO REMAIN
	DENOTES A NEW CONC. GRADE BEAM
	DENOTES A NEW HELICAL PILE

SLAB LEGEND:

SLAB A:	DENOTES A 6" CONC. SLAB w/ #5 @ 10" (T&B) E.W.
SLAB B:	DENOTES A 8" CONC. SLAB w/ #5 @ 10" (T&B) E.W.

CONCRETE WALL LEGEND:

CW-1:	DENOTES A 6" CONC. WALL w/ (1) #5 @ 24" O/C (VERTICAL) & (1) #4 @ 16" (HORIZONTAL) EACH FACE
CW-2:	DENOTES A 12" CONC. WALL w/ (1) #5 @ 24" O/C (VERTICAL) & (1) #4 @ 16" (HORIZONTAL) EACH FACE

NOTES:

- ALL ELECTRICAL, MECHANICAL AND PLUMBING PENETRATIONS THROUGH STRUCTURAL MEMBERS SHALL BE COORDINATED BY THE GENERAL CONTRACTOR. LOCATION AND DIMENSIONS OF EQUIPMENTS TO BE VERIFIED BY SPECIFIC VENDOR PRIOR TO INSTALLATION. SPECIFIC VENDOR IS RESPONSIBLE FOR CHECKING ADEQUACY OF EQUIPMENT WEIGHTS WITH STATED LOADS USED FOR STRUCTURAL DESIGN. IF LOADS EXCEED THOSE, VENDOR WILL BE RESPONSIBLE FOR UPDATE THE DESIGN ACCORDINGLY. PERMITTING TASKS AND TIMELINE COMPLIANCE ASSOCIATED WITH NEW DESIGN WILL BE VENDOR RESPONSIBILITY AS WELL.
- DIMENSIONS SHOWN SHALL BE FIELD VERIFIED. ANY DISCREPANCIES SHALL BE NOTED AND THE ENGINEER OF RECORD NOTIFIED BEFORE CONTINUING WITH THE WORK.
- CONTRACTOR TO SUBMIT SIGNED AND SEALED CALCULATIONS AND SHOP DRAWINGS FOR THE POST TENSIONED SLABS BY FLORIDA PROFESSIONAL ENGINEER BEFORE FABRICATION FOR APPROVAL BY THE ENGINEER OF RECORD TO SHOW COMPLIANCE WITH THE FLORIDA BUILDING CODE 2017 HVHZ EDITION.
- TO THE BEST OF THE ENGINEER'S KNOWLEDGE, THE PLANS AND SPECIFICATIONS COMPLY WITH THE APPLICABLE MINIMUM BUILDING CODES AND THE APPLICABLE FIRE-SAFETY STANDARDS AS DETERMINED BY THE LOCAL AUTHORITY IN ACCORDANCE WITH SECTION 110.8.4.4 (FBC 2020, 7TH EDITION) AND CHAPTER 933, FLORIDA STATUTES.
- STOREFRONT BY OTHERS UNDER A SEPARATE PERMIT. A SPECIALTY ENGINEER TO SUBMIT SHOP DRAWINGS AND CALCULATIONS TO E.O.R. FOR APPROVAL, PRIOR TO FABRICATION.

OTJ
169 E FLAGLER ST, SUITE 727 MIAMI, FL. 33131
P: 786.598.7260

CLIENT
801 ARTHUR GODFREY ROAD
801 ARTHUR GODFREY ROAD

CONSULTANTS
MEP CONSULTANT:
YCH ENGINEERING
99 NW 27 AVE
MIAMI FL. 33125
P: 305.969.9423

SEAL / SIGNATURE

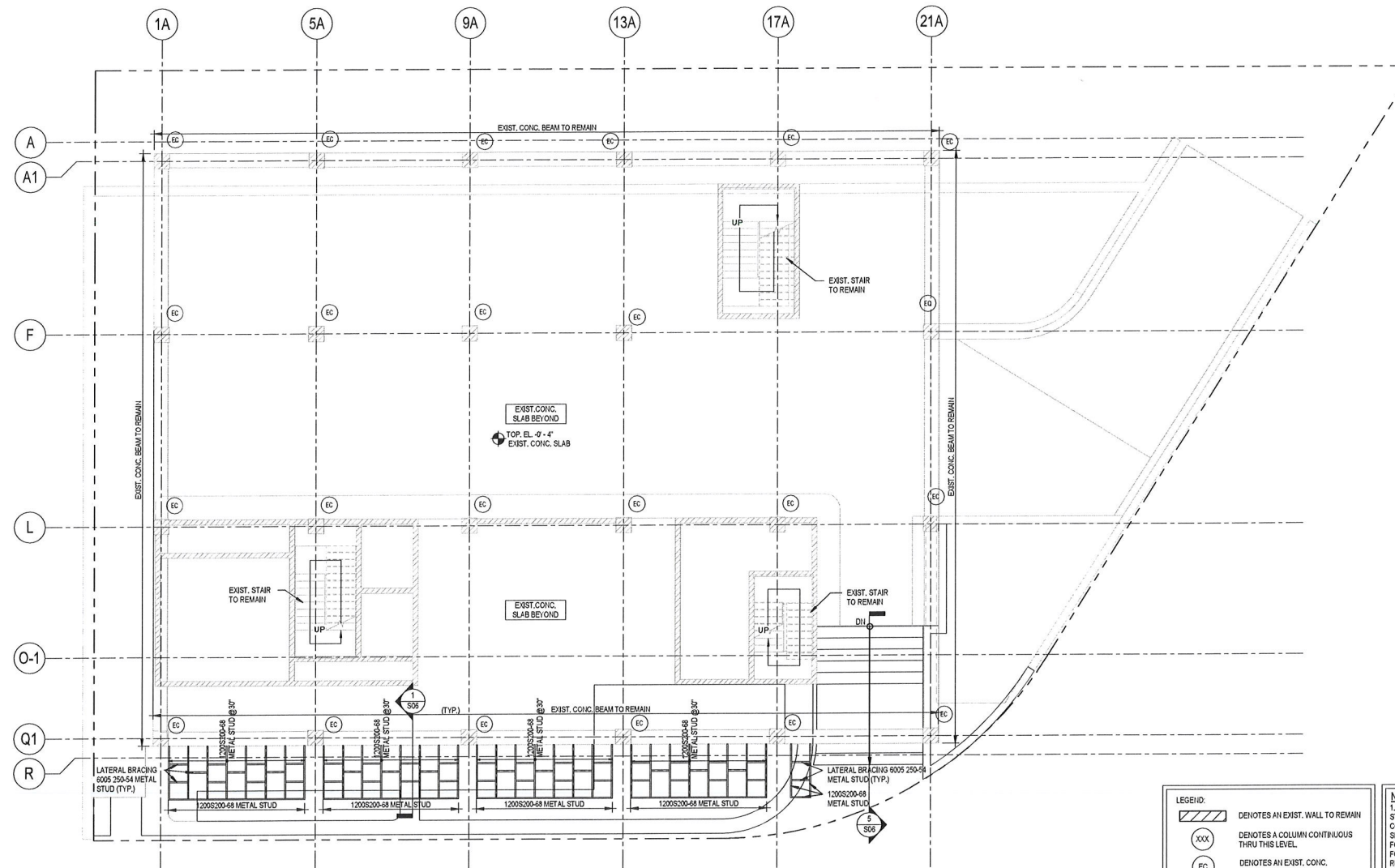
ISSUES REVISION NUMBER	DESCRIPTION	DATE

FILE INFORMATION
Project No: H220320
Drawn By: Author
Checked By: Checker
Proj. Phase:

SHEET NAME
FIRST FLOOR FRAMING PLAN

As indicated
S03

YCH
YOUSSEF HACHEM
CONSULTING ENGINEERING, INC.
CA. 26553
99 NW 27 AVE
MIAMI, FL. 33125
TEL. (786) 287-9120
FAX (305) 398-9453
www.ychengineering.com
YOUSSEF HACHEM, P.E., No. 43302



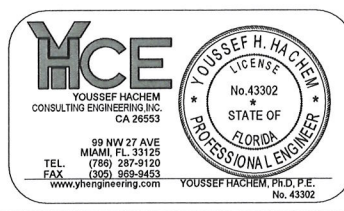
FIRST FLOOR FRAMING PLAN (TRELLIS)
SCALE: 1/8" = 1'-0"

LEGEND:

	DENOTES AN EXIST. WALL TO REMAIN
	DENOTES A COLUMN CONTINUOUS THRU THIS LEVEL
	DENOTES AN EXIST. CONC. COLUMN TO REMAIN
	DENOTES AN EXIST. CONC. PILE CAP TO REMAIN
	DENOTES AN EXIST. CONC. GRADE BEAM TO REMAIN

NOTES:

1. ALL ELECTRICAL, MECHANICAL AND PLUMBING PENETRATIONS THROUGH STRUCTURAL MEMBERS SHALL BE COORDINATED BY THE GENERAL CONTRACTOR. LOCATION AND DIMENSIONS OF EQUIPMENTS TO BE VERIFIED BY SPECIFIC VENDOR PRIOR TO INSTALLATION. SPECIFIC VENDOR IS RESPONSIBLE FOR CHECKING ADEQUACY OF EQUIPMENT WEIGHTS WITH STATED LOADS USED FOR STRUCTURAL DESIGN. IF LOADS EXCEED THOSE, VENDOR WILL BE RESPONSIBLE FOR UPDATE THE DESIGN ACCORDINGLY. PERMITTING TASKS AND TIMELINE COMPLIANCE ASSOCIATED WITH NEW DESIGN WILL BE VENDOR RESPONSIBILITY AS WELL.
2. DIMENSIONS SHOWN SHALL BE FIELD-VERIFIED. ANY DISCREPANCIES SHALL BE NOTED AND THE ENGINEER OF RECORD NOTIFIED BEFORE CONTINUING WITH THE WORK.
3. CONTRACTOR TO SUBMIT SIGNED AND SEALED CALCULATIONS AND SHOP DRAWINGS FOR THE POST TENSIONED SLABS BY FLORIDA PROFESSIONAL ENGINEER BEFORE FABRICATION FOR APPROVAL BY THE ENGINEER OF RECORD TO SHOW COMPLIANCE WITH THE FLORIDA BUILDING CODE 2017 HWZ EDITION.
4. TO THE BEST OF THE ENGINEER'S KNOWLEDGE, THE PLANS AND SPECIFICATIONS COMPLY WITH THE APPLICABLE MINIMUM BUILDING CODES AND THE APPLICABLE FIRE-SAFETY STANDARDS AS DETERMINED BY THE LOCAL AUTHORITY IN ACCORDANCE WITH SECTION 110.8.4 (FBC 2020, 7TH EDITION) AND CHAPTER 63, FLORIDA STATUTES.
5. STOREFRONT BY OTHERS UNDER A SEPARATE PERMIT. A SPECIALTY ENGINEER TO SUBMIT SHOP DRAWINGS AND CALCULATIONS TO E.O.R. FOR APPROVAL PRIOR TO FABRICATION.



OTJ
169 E FLAGLER ST., SUITE 727 MIAMI, FL 33131
P: 786.598.7260

CLIENT
801 ARTHUR GODFREY ROAD
801 ARTHUR GODFREY ROAD

CONSULTANTS
M.E.P. CONSULTANT:
YCH ENGINEERING
99 NW 27 AVE
MIAMI FL., 33125
P: 305.969.9423

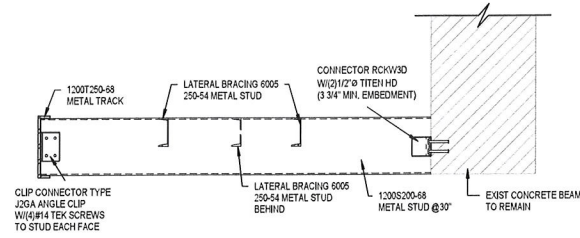
SEAL / SIGNATURE

ISSUES REVISION NUMBER	DESCRIPTION	DATE

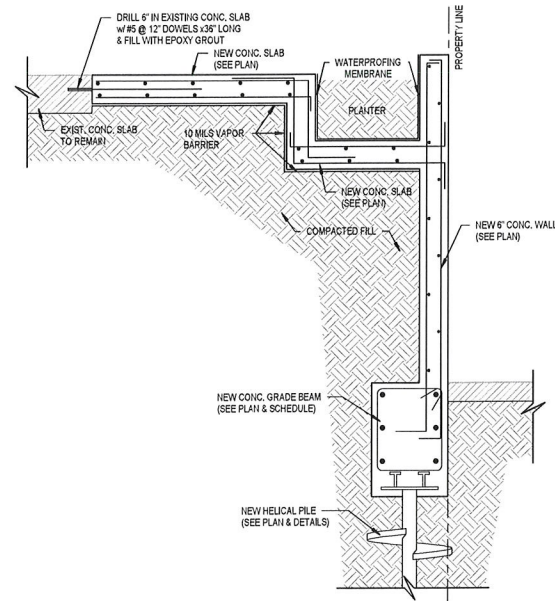
FILE INFORMATION
Project No: H220320
Drawn By: Author
Checked By: Checker
Proj. Phase:

SHEET NAME
FIRST FLOOR FRAMING PLAN (TRELLIS)

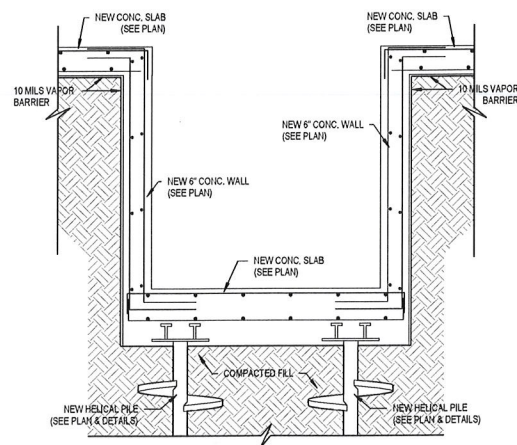
As indicated **S04**



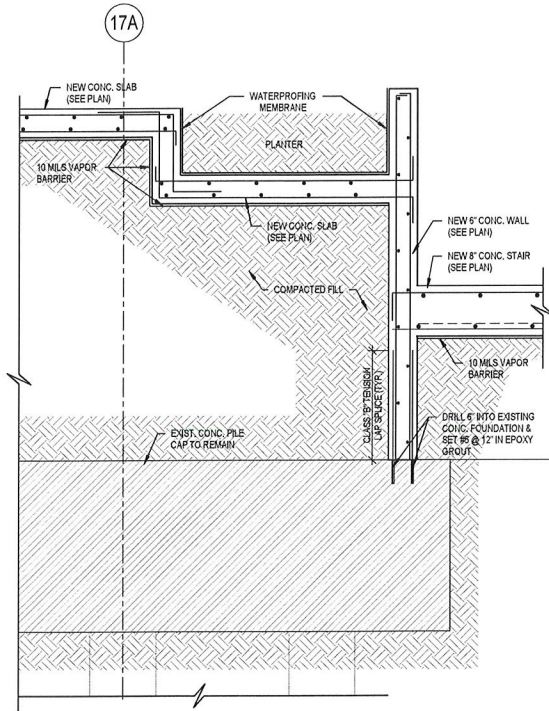
SECTION 1/S04
SCALE: 3/4" = 1'-0"



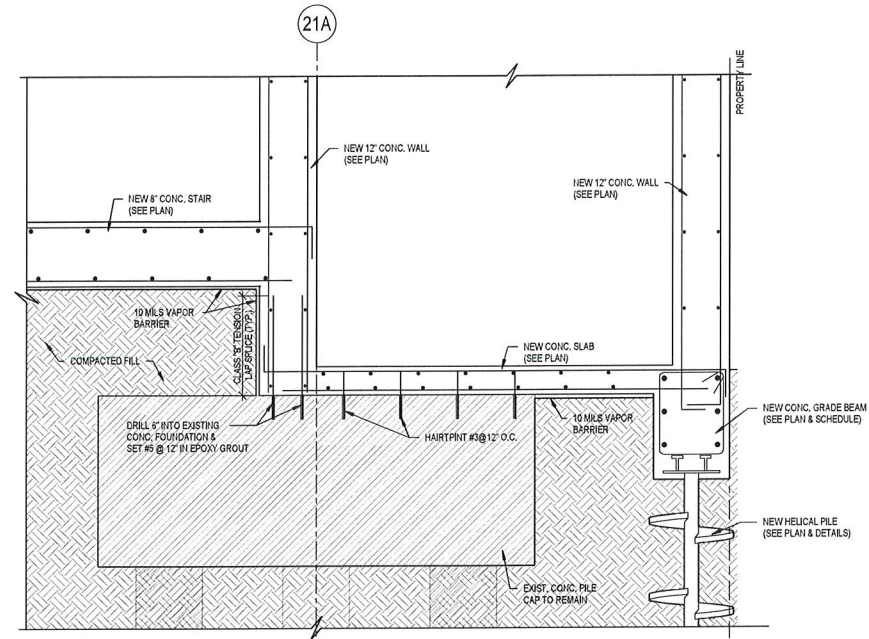
SECTION 2/S03
SCALE: 3/4" = 1'-0"



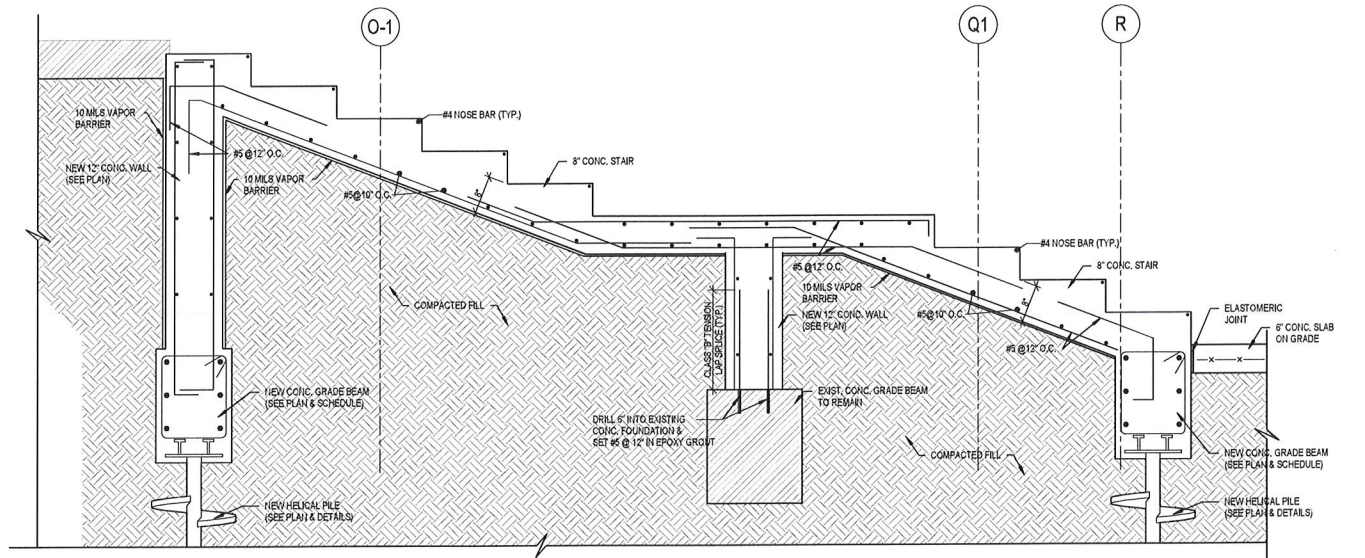
SECTION 6/S03
SCALE: 3/4" = 1'-0"



SECTION 3/S03
SCALE: 3/4" = 1'-0"



SECTION 4/S03
SCALE: 3/4" = 1'-0"



SECTION 5/S03
SCALE: 3/4" = 1'-0"

OTJ

169 E FLAGLER ST., SUITE 727 MIAMI, FL 33131
P: 786.598.7260

CLIENT

801 ARTHUR GODFREY ROAD

801 ARTHUR GODFREY ROAD

CONSULTANTS
MEP CONSULTANT:

YCH ENGINEERING
99 NW 27 AVE
MIAMI FL, 33125
P: 305.969.9423

SEAL / SIGNATURE

ISSUES REVISION NUMBER	DESCRIPTION	DATE

FILE INFORMATION

Project No: H220320
Drawn By: Author
Checked By: Checker
Proj. Phase:

SHEET NAME

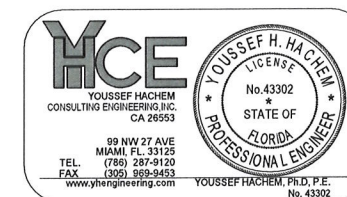
SECTIONS

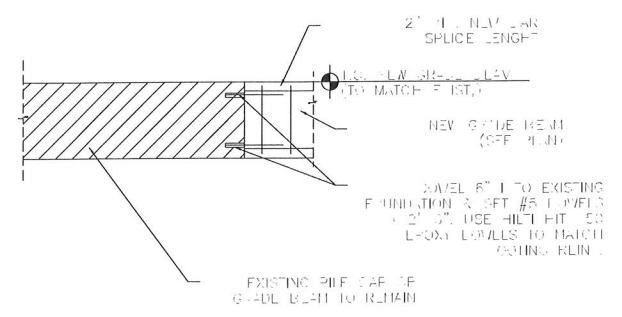


S06

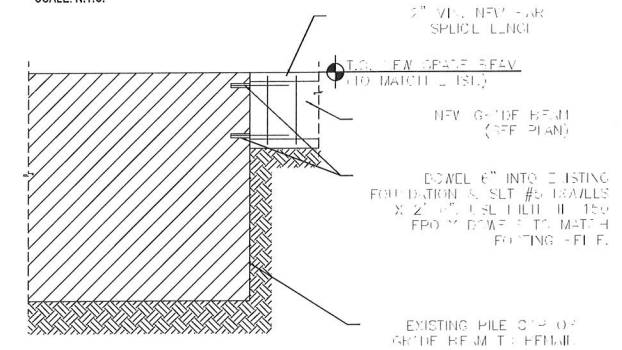
3/4" = 1'-0"

© 2020 OTJ Architects, Inc.



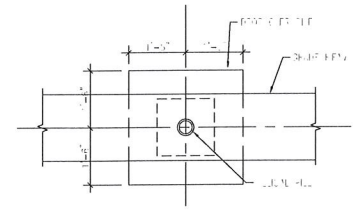


NEW TO EXIST. GRADE BEAM CONNECTION DETAIL
SCALE: N.T.S.

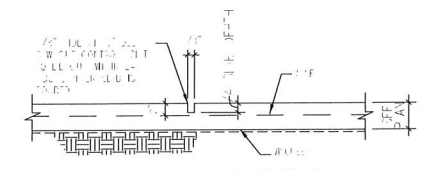


NEW TO EXIST. FOOTING CONNECTION DETAIL
SCALE: N.T.S.

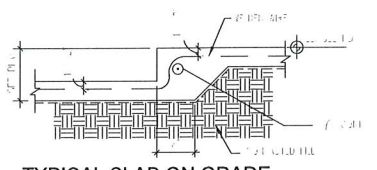
Type Mark	SIZE		TOP REINFORCING				STIRRUPS				
	WIDTH	HEIGHT	BOTTOM "B" BARS	"T" BARS	"C" BARS	"E" BARS	"I" BARS EA FACE	SIZE	TYPE	SPACING	REMARKS
GB-1	1'-4"	2'-0"									
GB-1	1'-4"	2'-0"	2#8	2#8			1#8	#3	□	10" O.C.	



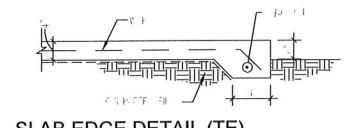
TYPICAL PLAN DETAIL OF GRADE BEAM DROP OVER AUGER-CAST CONC. PILE



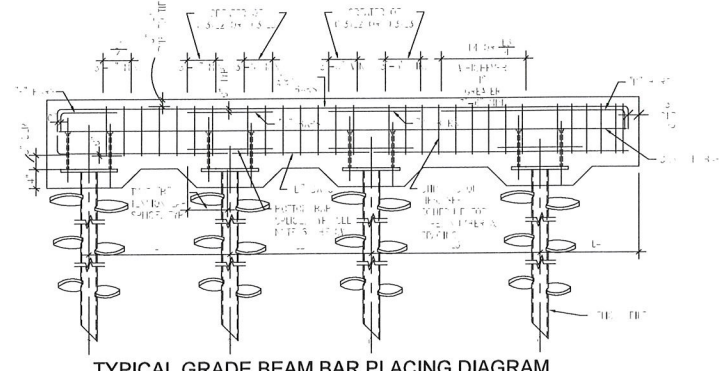
TYP. CONTROL JOINT DETAIL (C.J.)



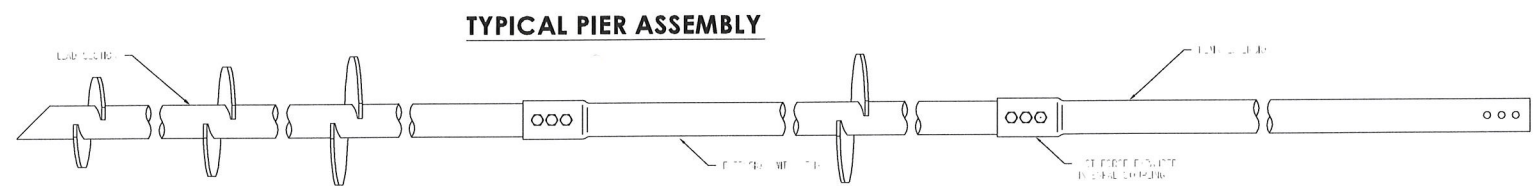
TYPICAL SLAB ON GRADE ELEVATION CHANGE



SLAB EDGE DETAIL (TE)



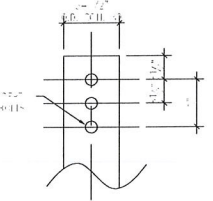
TYPICAL GRADE BEAM BAR PLACING DIAGRAM



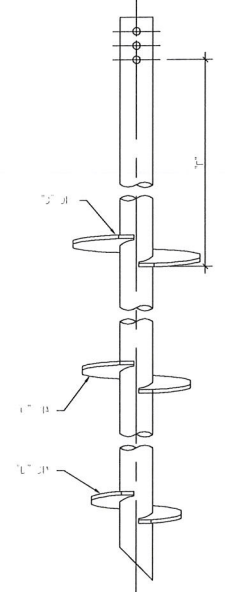
TYPICAL PIER ASSEMBLY

LEAD SECTIONS				
CAT. NO.	"A"	"B"	"C"	"D"
ET-1004	0	0	0	0

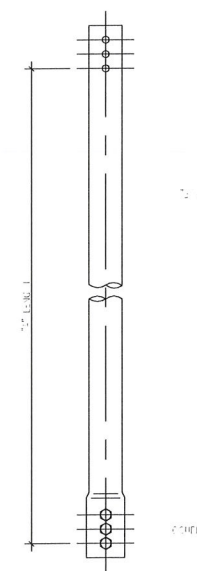
EXTENSION SECTIONS			
CAT. NO.	"A"	"B"	"E"
ET-1005	0	0	0
ET-1006	0	0	0
ET-1007	0	0	0



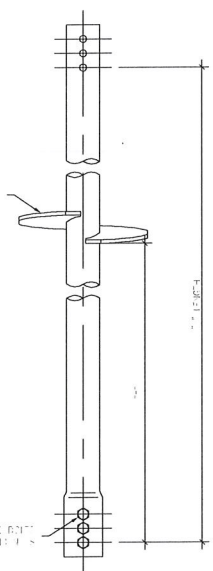
COUPLING BOLT HOLE DETAIL



TWIN HELIX LEAD SECTION



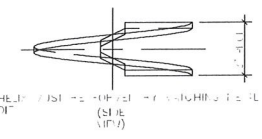
PLAIN EXTENSION



SINGLE HELIX EXTENSIONS

NOTES

1. ALL DIMENSIONS ARE IN FEET AND INCHES UNLESS OTHERWISE NOTED.
2. ALL REINFORCEMENT SHALL BE #5 UNLESS OTHERWISE NOTED.
3. ALL REINFORCEMENT SHALL BE LAPPED WITH LAP LENGTHS AS SHOWN.
4. ALL REINFORCEMENT SHALL BE PLACED AS SHOWN IN THE DETAILS.
5. ALL REINFORCEMENT SHALL BE PLACED AS SHOWN IN THE DETAILS.
6. ALL REINFORCEMENT SHALL BE PLACED AS SHOWN IN THE DETAILS.
7. ALL REINFORCEMENT SHALL BE PLACED AS SHOWN IN THE DETAILS.
8. ALL REINFORCEMENT SHALL BE PLACED AS SHOWN IN THE DETAILS.
9. ALL REINFORCEMENT SHALL BE PLACED AS SHOWN IN THE DETAILS.
10. ALL REINFORCEMENT SHALL BE PLACED AS SHOWN IN THE DETAILS.



RS3500, 300 HELICAL PILES

OTJ
169 E FLAGLER ST., SUITE 727 MIAMI, FL 33131
P. 786.598.7260

CLIENT
801 ARTHUR GODFREY ROAD
801 ARTHUR GODFREY ROAD

CONSULTANTS
MEP CONSULTANT:
YCH ENGINEERING
99 NW 27 AVE
MIAMI FL, 33125
P. 305.969.9423

SEAL / SIGNATURE

ISSUES	REVISION NUMBER	DESCRIPTION	DATE

FILE INFORMATION
Project No: H220320
Drawn By: Author
Checked By: Checker
Proj. Phase:

SHEET NAME
TYPICAL DETAILS & SCHEDULES

As indicated
S07