

Sunshine811
 Call 811 or www.sunshine811.com two full business days before digging to have utilities located and marked.
 Check positive response codes before you dig!

TREE DISPOSITION LEGEND

- Existing tree or palm to be transplanted
- Existing tree or palm to be removed
- Existing tree and palm to remain in their existing location and be protected during construction, no construction or excavation shall be permitted within the dripline of the trees.
- LIMITS OF EXISTING TREE & PALM PROTECTION ZONE
- PROPOSED BUILDING & PAVED AREAS

TREE DISPOSITION SUMMARY				
	TOTAL	REMAIN	REMOVE	RELOCATE
TREES	7	3	4	0
PALMS	5	1	4	0

EXISTING TREE DISPOSITION LIST LOT - 1										
No.	Scientific Name	Common Name	Diameter / DBH (in)	Height (ft)	Spread / Canopy (ft)	Tree Protection Zone Radius (ft)	Condition	Disposition	Mitigation (in)	Comments
12	Royal Palm	Roystonea regia	14	32 CT 42 OA	24	5	Moderate	Remain		
13	Coccoloba uvifera	Seagrape	120	25	25	60	Moderate	Remain		
14	Roystonea regia	Royal Palm	15	55	26	5	Moderate	Remove	1 Tree	
15	Ficus benghalensis	Banyan	50	50	45	42	Moderate	Remove	50	
16	Ficus aurea	Strangler Fig	18	27	30	15	Moderate	Remain		
17	Monkeypod	Pithecellobium dulce	24	40	45	20	Poor	Remove	24	
18	Australian Pine	Casuarina equisetifolia	39	55	70	33	Moderate	Remove	0 Invasive	
19	Washingtonia spp.	Washingtonia Palm	12	63	6	5	Dead	Remove	0 Stump	
20	Washingtonia spp.	Washingtonia Palm	12	60	10	5	Moderate	Remove	1 Tree	
21	Washingtonia spp.	Washingtonia Palm	12	62	10	5	Moderate	Remove	1 Tree	
22	Swietenia mahagoni	Mahogany	18	24	25	15	Moderate	Remove	18	
23	Swietenia mahagoni	Mahogany	19	24	20	16	Poor	Remain		
Total to Mitigate (in)									92	+ 2 palm/tree

TREE REPLACEMENT CHART			
Total diameter of tree(s) to be removed (sum of inches at DBH)	Total # of replacement trees required (2" DBH minimum each: 12' min. OA)	OR	Total # of replacement trees required (4" DBH minimum each: 16' min. OA)
2"-3"	1	or	0
4"-6"	2	or	1
7"-12"	4	or	2
13"-18"	6	or	3
19"-24"	8	or	4
25"-30"	10	or	5
31"-36" x 1	12 x 1 = 12	or	6 x 1 = 6
37"-42"	14	or	7
43"-48"	16	or	8
49"-60" x 1	20 x 1 = 20	or	10 x 1 = 10
TOTAL: 92"	Total: 32 Trees + 3 palm/tree = 35 trees	or	Total: 16 Trees + 2 palm/tree
	Provided: 0		Provided: 9 trees

ISSUE DATE:

No.	Date	Description

All ideas, designs, arrangements, plans and specifications indicated or represented by this drawing are owned by and are the property of Borges + Associates, P.A., and were created, evolved and developed for use on and in connection with the specified project. No copies, transmissions, reproductions, or electronic manipulation of any portion of these drawings in whole or in part are to be made without the express written permission of Borges + Associates, P.A.

All copyrights reserved © 2021

borges+associates
 architecture urban-planning interior-design
 999 Brickell Ave., Suite 700 Miami, Florida 33131
 305.374.9216 phone 305.374.9217 fax
 www.borgesarchitects.com

REINALDO BORGES, ARCHITECT

Project Team

DERICK LANGE
 Landscape Architect LA666705
 www.alllandscape.com
 4459 NW 97 CT / Doral, FL 33178
 Ph: 305.303.7059

Project Name

SINGLE FAMILY RESIDENCE
 4230 NORTH BAY ROAD
 Miami Beach, FL 33140

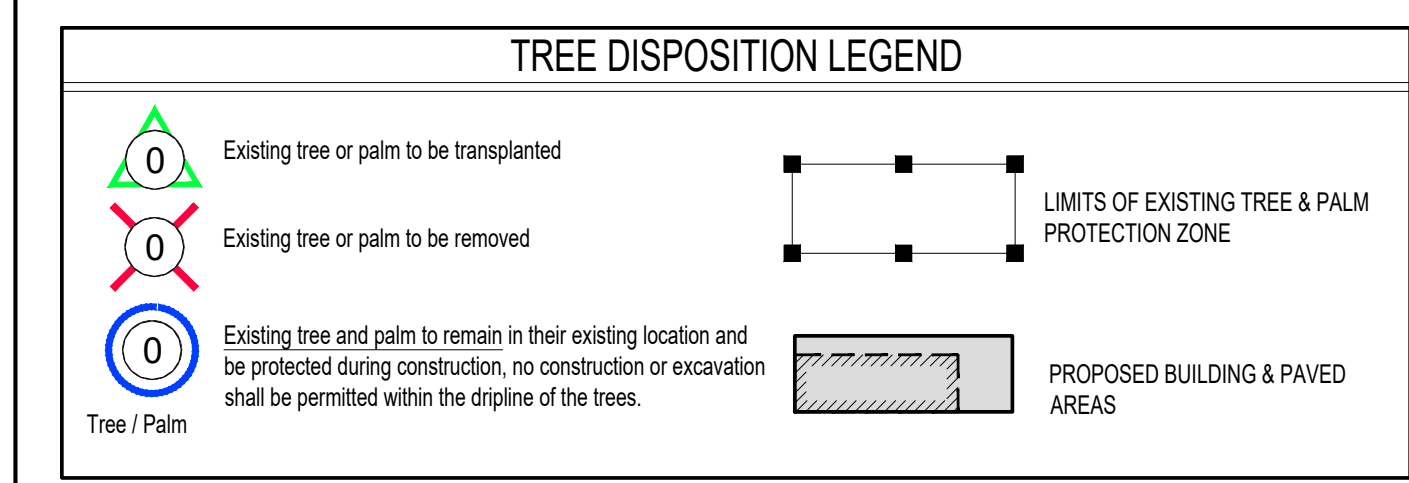
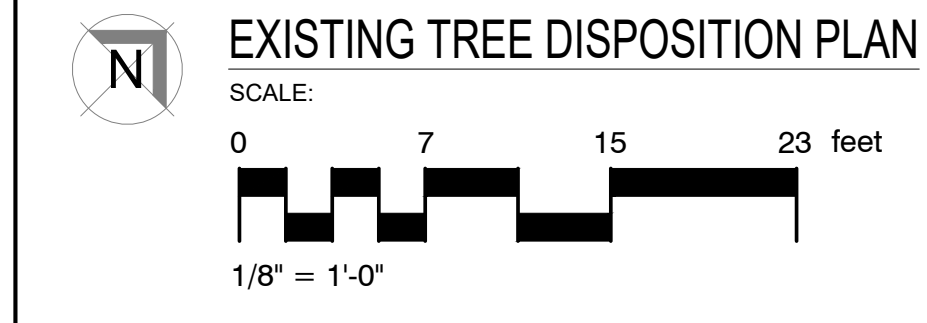
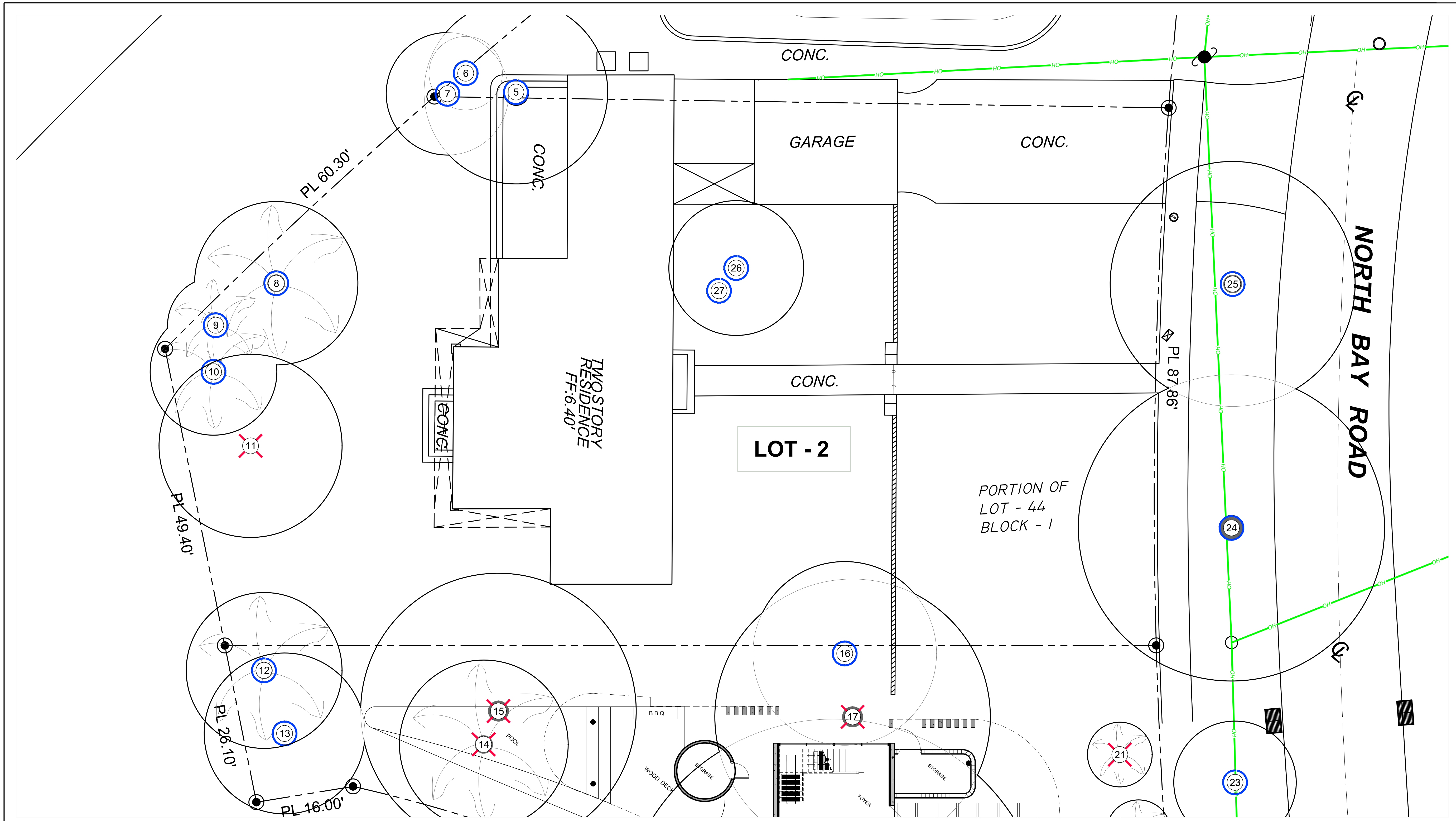
Project Number 219500

Drawing Name

EXISTING TREE DISPOSITION LOT - 1

Scale: Drawing Number

L-01A



EXISTING TREE DISPOSITION LIST LOT - 2

No.	Scientific Name	Common Name	Diameter / DBH (in)	Height (ft)	Spread / Canopy (ft)	Tree Protection Zone Radius (ft)	Condition	Disposition	Mitigation (in)	Comments
5	Mahogany	Swietenia mahagoni	31	38	35	26	Poor	Remain		
6	Weeping Fig	Ficus benjamina	10	33	10	5	Poor	Remain		Overgrown hedgerow
7	Weeping Fig	Ficus benjamina	12	33	20	6	Poor	Remain		Overgrown hedgerow
8	Roystonea regia	Royal Palm	20	35 CT 46 OA	25	5	Good	Remain		
9	Roystonea regia	Royal Palm	10	16 CT 23 OA	15	5	Moderate	Remain		
10	Roystonea regia	Royal Palm	16	32 CT 42 OA	23	5	Good	Remain		
11	Melaleuca	Melaleuca quinquenervia	42	40	35	21	Poor	Remove	0 Invasive	
24	Swietenia mahagoni	Mahogany	26	33	50	22	Moderate	Remain		
25	Swietenia mahagoni	Mahogany	31	33	40	26	Moderate	Remain		
26	Melaleuca	Melaleuca quinquenervia	30	30	22	15	Poor	Remain		
27	Part of 26							Remain		
Total to Mitigate (in)									0	+ 0 palm/tree

TREE DISPOSITION SUMMARY

	TOTAL	REMAIN	REMOVE	RELOCATE
TREES	6	5	1	0
PALMS	3	3	0	0

TREE REPLACEMENT CHART

Total diameter of tree(s) to be removed (sum of inches at DBH)	Total # of replacement trees required (2" DBH minimum each: 12' min. OA)	OR	Total # of replacement trees required (4" DBH minimum each: 16' min. OA)
2"-3"	1	or	0
4"-6"	2	or	1
7"-12"	4	or	2
13"-18"	6	or	3
19"-24"	8	or	4
25"-30"	10	or	5
31"-36"	12	or	6
37"-42"	14	or	7
43"-48"	16	or	8
49"-60"	20	or	10
TOTAL: 0"	Total: 0 Trees	or	Total: 0 Trees
	Provided: 0		Provided: 0 trees

Sunshine811
 Call 811 or www.sunshine811.com two full business days before digging to have utilities located and marked.
 Check positive response codes before you dig!

ISSUE DATE:

No.	Date	Description

All ideas, designs, arrangements, plans and specifications indicated or represented by this drawing are owned by and are the property of Borges + Associates, P.A., and were created, evolved and developed for use on and in connection with the specified project. No copies, transmissions, reproductions, or electronic manipulation of any portion of these drawings in whole or in part are to be made without the express written permission of Borges + Associates, P.A.

All copyrights reserved © 2021

borges+associates
 architecture urban-planning interior-design
 999 Brickell Ave., Suite 700 Miami, Florida 33131
 305.374.9216 phone 305.374.9217 fax
 www.borgesarchitects.com

REINALDO BORGES, ARCHITECT

 AA26000765
 AR0016290

Project Team

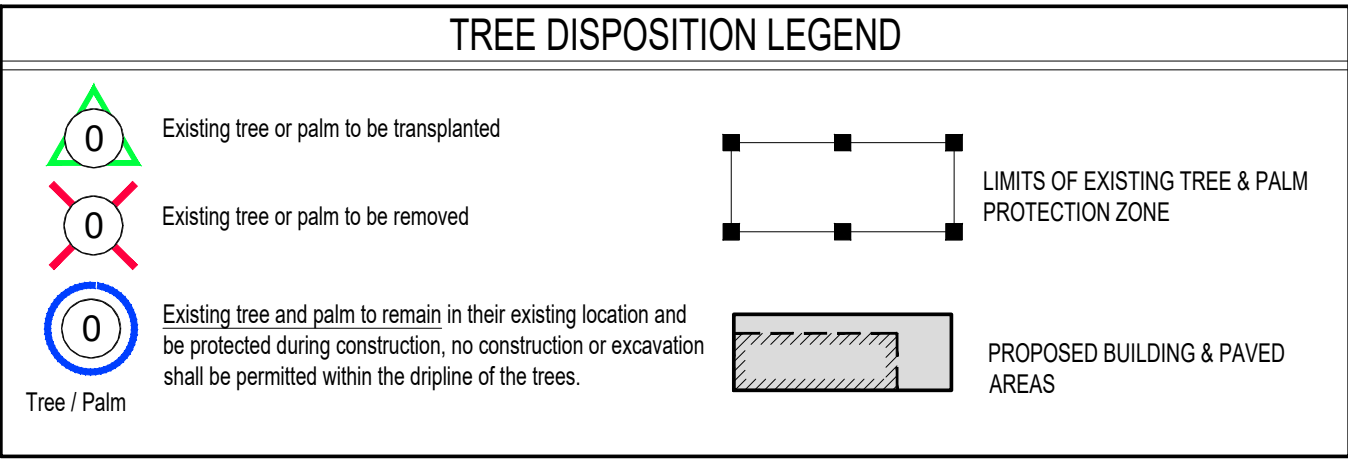
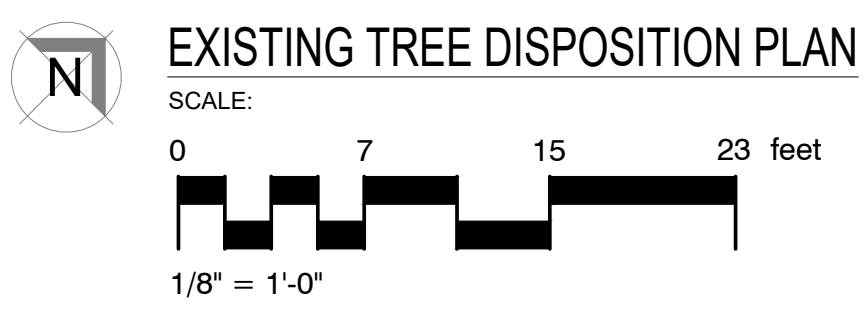
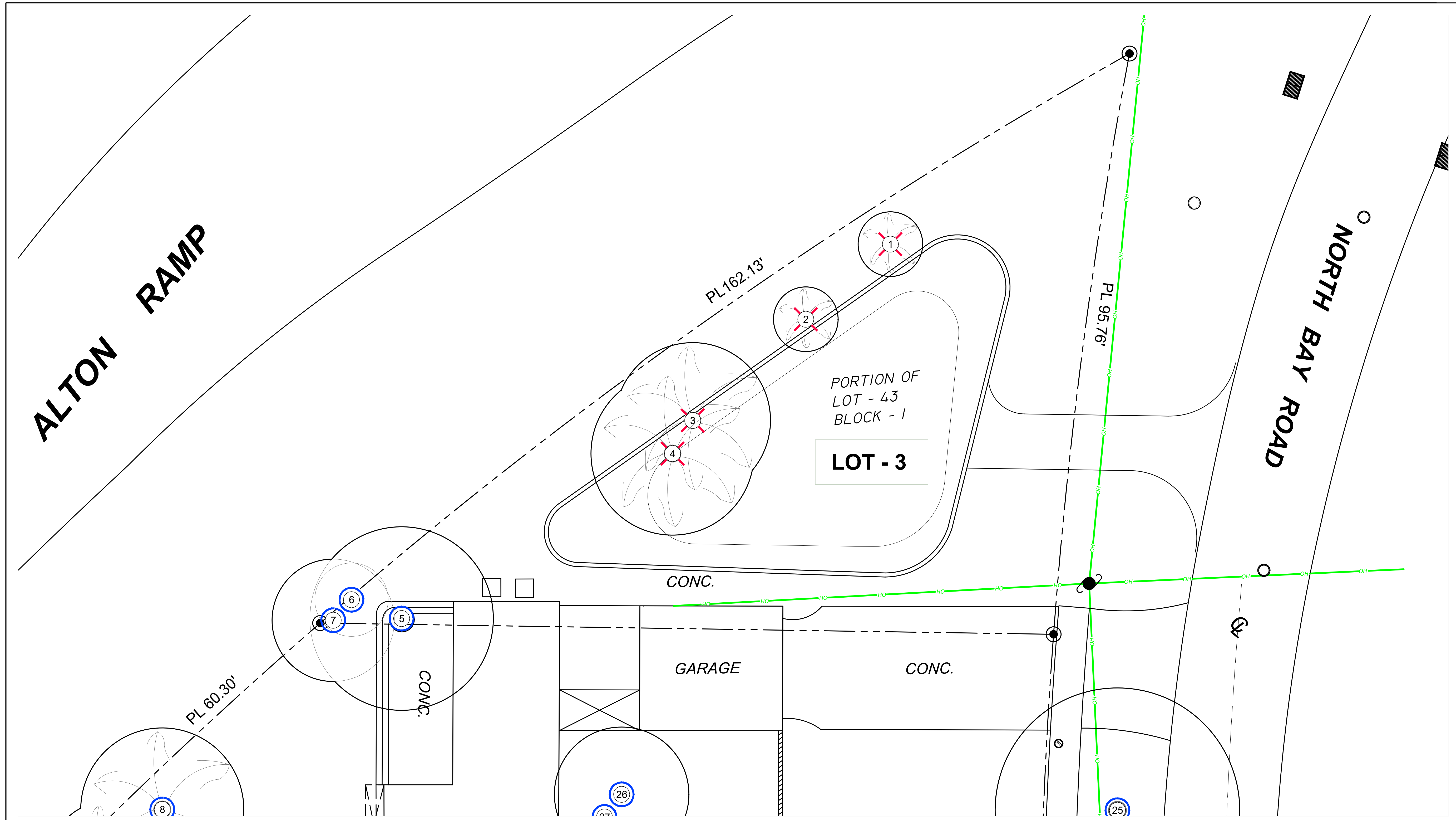
DERICK LANGE
 Landscape Architect LA666705
 www.alllandscape.com
 4459 NW 97 CT / Doral, FL 33178
 Ph: 305.303.7059

Project Name

SINGLE FAMILY RESIDENCE
 4230 NORTH BAY ROAD
 Miami Beach, FL 33140

Project Number 219500
Drawing Name
EXISTING TREE DISPOSITION LOT - 2

Scale: **Drawing Number**
L-01B



EXISTING TREE DISPOSITION LIST LOT - 3

No.	Scientific Name	Common Name	Diameter / DBH (in)	Height (ft)	Spread / Canopy (ft)	Tree Protection Zone Radius (ft)	Condition	Disposition	Mitigation (in)	Comments
1	Chinese Fan Palm	Livistona chinensis	N/A	12	12	5	Good	Remove	1 Tree	
2	Chinese Fan Palm	Livistona chinensis	N/A	11	12	5	Good	Remove	1 Tree	
3	Coconut Palm	Cocos nucifera	13	6 CT 26 OA	24	5	Moderate	Remove	1 Tree	
4	Coconut Palm	Cocos nucifera	12	3 CT 21 OA	24	5	Moderate	Remove	1 Tree	
Total to Mitigate (in)									0	+ 4 palm/tree

Sunshine 811
 Call 811 or www.sunshine811.com two full business days before digging to have utilities located and marked.
Check positive response codes before you dig!

TREE DISPOSITION SUMMARY

	TOTAL	REMAIN	REMOVE	RELOCATE
TREES	0	0	0	0
PALMS	4	0	4	0

TREE REPLACEMENT CHART

Total diameter of tree(s) to be removed (sum of inches at DBH)	Total # of replacement trees required (2" DBH minimum each: 12' min. OA)	OR	Total # of replacement trees required (4" DBH minimum each: 16' min. OA)
2"-3"	1	or	0
4"-6"	2	or	1
7"-12"	4	or	2
13"-18"	6	or	3
19"-24"	8	or	4
25"-30"	10	or	5
31"-36"	12	or	6
37"-42"	14	or	7
43"-48"	16	or	8
49"-60"	20	or	10
TOTAL: 0"	Total: 4 tree for palm	or	Total: 2 tree for palm
	Provided: 0 trees		Provided: 0 trees

ISSUE DATE:

No.	Date	Description

All ideas, designs, arrangements, plans and specifications indicated or represented by this drawing are owned by and are the property of Borges + Associates, P.A., and were created, evolved and developed for use on and in connection with the specified project. No copies, transmissions, reproductions, or electronic manipulation of any portion of these drawings in whole or in part are to be made without the express written permission of Borges + Associates, P.A.

All copyrights reserved © 2021

borges+associates
 architecture urban-planning interior-design
 999 Brickell Ave., Suite 700 Miami, Florida 33131
 305.374.9216 phone 305.374.9217 fax
 www.borgesarchitects.com

REINALDO BORGES, ARCHITECT

Project Team

DERICK LANGE
 Landscape Architect LA666705
 www.alllandscape.com
 4459 NW 97 CT / Doral, FL 33178
 Ph: 305.303.7059

Project Name

SINGLE FAMILY RESIDENCE
 4230 NORTH BAY ROAD
 Miami Beach, FL 33140

Project Number 219500

Drawing Name

EXISTING TREE DISPOSITION LOT - 3

Scale: Drawing Number

L-01C

