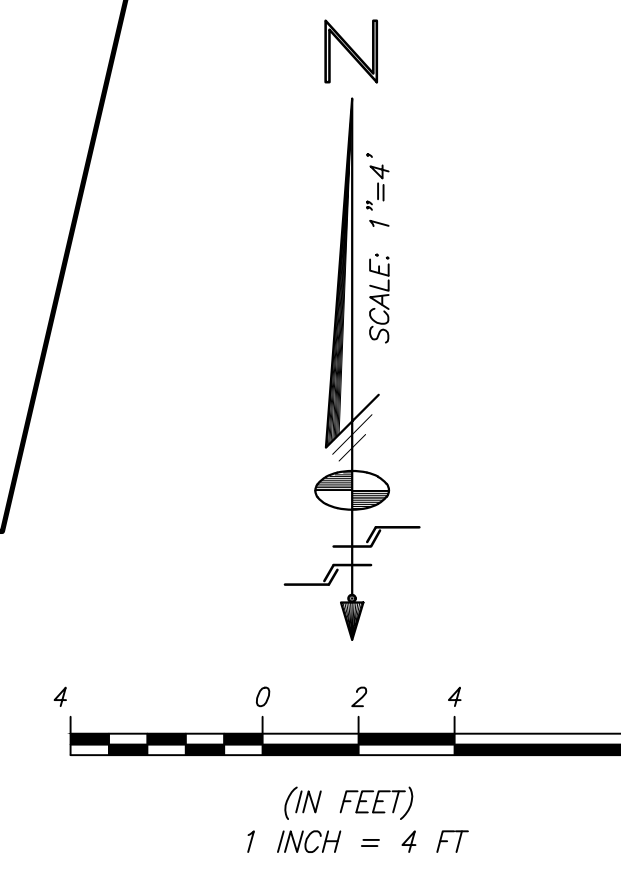
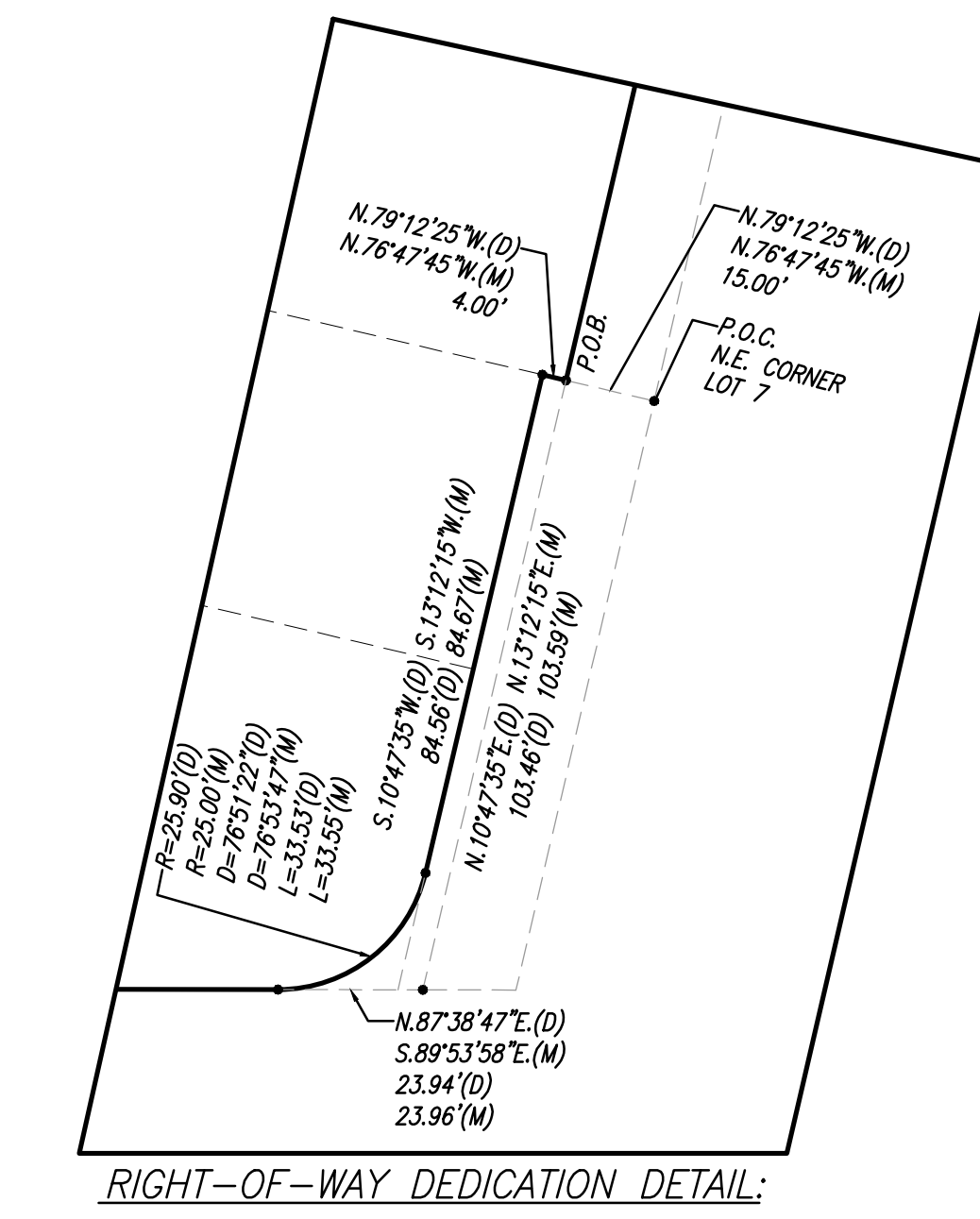
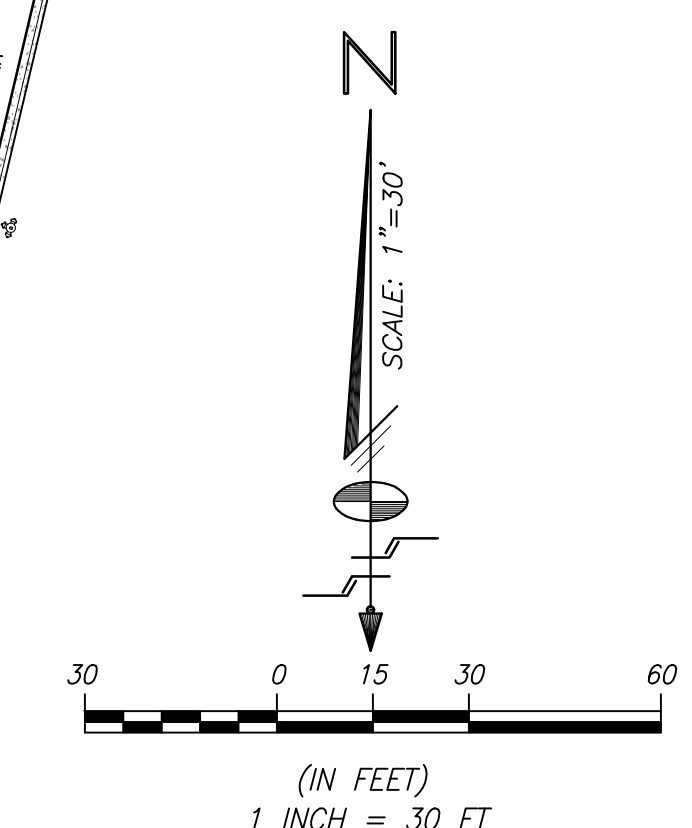
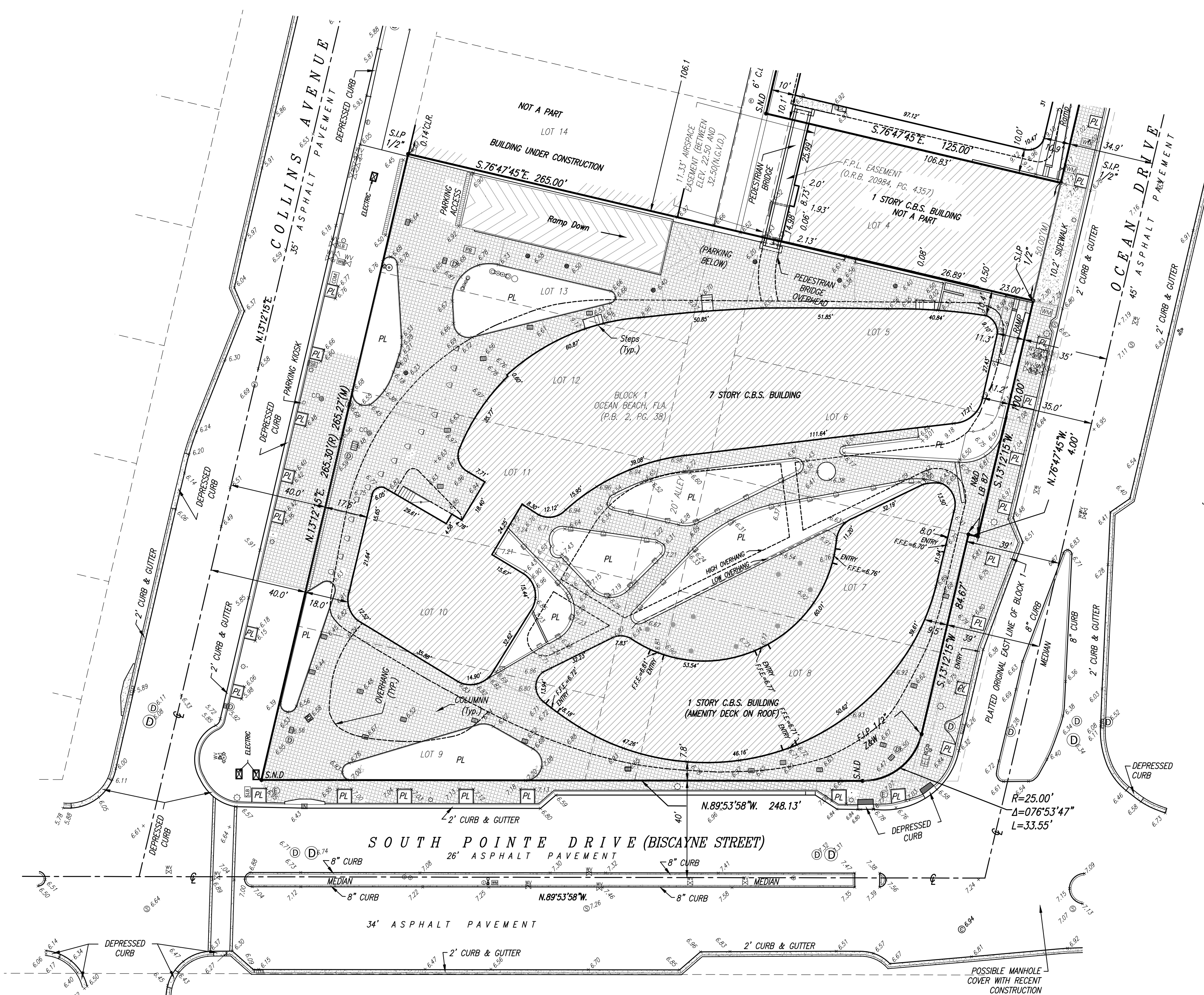


- GENERAL LEGEND:**
- AERIAL TARGET
 - ALUMINUM LIGHT POST (SINGLE)
 - ALUMINUM LIGHT POST (DOUBLE)
 - ALUMINUM LIGHT POST (TRIPLE)
 - ALUMINUM LIGHT POST (QUAD)
 - ANCHOR/JOY WIRE
 - BACKFLOW PREVENTER ASSEMBLY
 - CABLE TELEVISION BOX
 - CATCH BASIN
 - CENTERLINE
 - CHECK VALVE ASSEMBLY
 - CIRCULAR DRAIN
 - COLUMN (CIRCULAR)
 - COLUMN (SQUARE)
 - CONCRETE LIGHT POLE
 - CONCRETE LIGHT POLE (DOUBLE)
 - CONCRETE POWER POLE
 - CONTROL POINT
 - CURB INLET
 - ELECTRIC BOX
 - ELECTRIC HAND HOLE
 - ELEVATIONS (SEE NOTES FOR DATUM)
 - FIRE HYDRANT
 - FLAGPOLE
 - FLOW LINE
 - FORCE MAIN MANHOLE
 - FORCE MAIN VALVE
 - F.P.L. ELECTRIC MANHOLE
 - F.P.L. TRANSFORMER PAD
 - F.P.L. TRANSMISSION POLE
 - GAS METER
 - GAS PUMP
 - GAS VALVE
 - GREASE TRAP MANHOLE
 - GROUND LIGHTING
 - GUARD POST
 - IRRIGATION HAND HOLE
 - IRRIGATION VALVE
 - MALIBOX
 - MONITOR WELL
 - MONUMENT LINE
 - P-5 INLET
 - P-6 INLET
 - PARKING METER
 - PEDESTRIAN CROSSING SIGNAL
 - PERMANENT REFERENCE MONUMENT
 - POST INDICATOR VALVE
 - VACUUM BREAKER ASSEMBLY
 - PROPERTY LINE
 - SANITARY SEWER CLEANOUT
 - SANITARY SEWER MANHOLE
 - SANITARY CONNECTION
 - SIGN POST
 - SPRINKLER PUMP
 - STANDPIPE
 - STORM SEWER MANHOLE
 - STREET LIGHT HAND HOLE
 - SWALE INLET
 - TELEPHONE BOX (SOUTHERN BELL)
 - TELEPHONE HAND HOLE
 - TELEPHONE MANHOLE (SO. BELL)
 - TELEPHONE PAVPHONE
 - TRAFFIC HAND HOLE
 - TRAFFIC UTILITY BOX
 - TRAFFIC SIGNAL POST
 - UNDERGROUND UTILITY MARKER
 - UNKNOWN UTILITY MANHOLE
 - UNKNOWN UTILITY HAND HOLE
 - WATER MANHOLE
 - WATER METER
 - WATER VALVE
 - WOOD LIGHT POLE
 - WOOD POWER POLE
 - HANDICAP PARKING
 - STROLLER PARKING
- ABBREVIATIONS:**
- R denotes RADIUS
 - A denotes DELTA ANGLE
 - d denotes ARC DISTANCE
 - T denotes TANGENT DISTANCE
 - PC denotes PERMANENT CONTROL POINT
 - PRM denotes PERMANENT REFERENCE MONUMENT
 - PL denotes PLAT BOOK
 - FC denotes FACE
 - POC denotes POINT OF COMMENCEMENT
 - POB denotes POINT OF BEGINNING
 - OPW denotes OVERHEAD UTILITY WIRES
 - ORF denotes OPTICAL RECORDS BOOK
 - PC denotes POINT OF CURVATURE
 - CBS denotes CONCRETE BLOCK STRUCTURE
 - CONC denotes CONCRETE
 - CLF denotes CHAIN LINK FENCE
 - WF denotes WOOD FENCE
 - F.P.L. denotes FOUND IRON PIPE
 - S.I.P. denotes SET IRON PIPE & LB-87 CAP
 - F.N.D. denotes FOUND NAIL & BRASS DISC
 - S.A.D. denotes SET LB-87 NAIL & BRASS DISC
 - ENC. denotes ENCROACHMENT
 - MOH denotes METAL OVERHAND
 - QIA denotes GAS VALVE ASSEMBLY
 - (D) denotes DEED DISTANCE
 - (L) denotes DISTANCE BY LEGAL DESCRIPTION
 - (M) denotes MEASURED DISTANCE
 - (R) denotes RECORD OR PLATTED DISTANCE
 - PL denotes PLANTER
- SYMBOLS:**
- COMMUNICATION
 - DRAINAGE
 - ELECTRIC
 - FORCE MAIN
 - IRRIGATION
 - NATURAL GAS
 - OVERHEAD WIRES
 - SANITARY SEWER
 - WATER



This Survey has been electronically signed and sealed by Mark Steven Johnson, PSM on the date noted hereon. All signatures must be verified on electronic copies. Printed copies are not considered signed and sealed, unless they include an additional raised embossed seal of the surveyor.

SAVARESE-SHISBIN & ASSOCIATES, INC.
 LAND PLANNERS • ENGINEERS • LAND SURVEYORS
 3240 CORPORATE WAY, MIAMI, FLORIDA 33125 TEL: (954) 435-7010 FAX: (954) 438-3888

CERTIFICATE OF AUTHORIZATION No. LB-87

Checked By: M.S.J. Date: 04-29-13
 Scale: AS SHOWN

Survey: 02-25-13
 Order No. 201050 F.B. No.: 2218-B
 File No. AJ-5034

Sheet 2 of 2 Sheet(s)

NOTE: This sketch is not valid unless it bears the signature and the original raised seal of a Florida licensed surveyor and mapper.
 This sketch is a "Boundary Survey."

BOUNDARY SURVEY

Section 03, Township 54 South, Range 42 East, City of Miami Beach, Miami-Dade County, Florida

REVISIONS	DATE	BY

FILE NO. AJ-5034