

GENERAL LANDSCAPE NOTES AND SPECIFICATIONS				NOTES:																																					
<div>1. CONTRACTOR QUALIFICATIONS</div> <div>1.1 CONTRACTOR MUST BE A LICENSED LANDSCAPE CONTRACTOR</div> <div>1.2 CONTRACTOR MUST HAVE A MINIMUM OF 10 YEARS OF PROVEN EXPERIENCE RELOCATING LARGE SPECIMEN TREES AND PALMS IN SOUTH FLORIDA.</div> <div>1.3 CONTRACTOR MUST HAVE PROVEN EXPERIENCE RELOCATING TREES AND PALMS OF THE SAME SPECIES AND SIZE AS THOSE TO BE RELOCATED FOR THE CURRENT PROJECT.</div> <div>1.4 CONTRACTOR MUST HAVE A CERTIFIED ARBORIST ON STAFF.</div> <div>2. CONTRACTOR REQUIREMENTS</div> <div>2.1 CONTRACTOR MUST VISIT THE JOBSITE AND INSPECT ALL TREES AND PALMS TO BE RELOCATED AS WELL AS EXISTING SITE CONDITIONS AND RESTRICTIONS PRIOR TO PREPARING BID.</div> <div>2.2 CONTRACTOR MUST VERIFY AND ENSURE THAT ALL TREES AND PALMS IDENTIFIED ON THE PLANS AND THOSE TAGGED ON THE JOBSITE CORRESPOND AS TO NUMBER AND DESCRIPTION. ANY DISCREPANCIES MUST BE BROUGHT TO THE ATTENTION OF THE LANDSCAPE ARCHITECT IMMEDIATELY, PRIOR TO PREPARING BID.</div> <div>2.3 CONTRACTOR MUST CONDUCT ALL WORK ASSOCIATED WITH RELOCATION AND MAINTENANCE OF TREES AND PALMS TO BE RELOCATED. NO WORK IS TO BE SUBCONTRACTED WITHOUT PRIOR WRITTEN CONSENT OF THE OWNER AND/OR LANDSCAPE ARCHITECT.</div> <div>2.4 CONTRACTOR MUST DESIGNATE A COMPETENT, ENGLISH-SPEAKING SUPERVISOR OR FOREMAN TO OVERSEE AND DIRECT ALL RELOCATION AND MAINTENANCE ACTIVITIES AS OUTLINED IN THESE SPECIFICATIONS.</div> <div>2.5 CONTRACTOR MUST SCHEDULE ROOT PRUNING TO PROVIDE THE MAXIMUM POSSIBLE TIME FOR NEW ROOT GROWTH. EVEN TREES AND PALMS THAT TYPICALLY DO NOT REQUIRE LONG (OR ANY) ROOT PRUNING WILL BENEFIT FROM MORE ROOT PRUNING TIME; THEREFORE, ALL TREES AND PALMS TO BE RELOCATED MUST BE ROOT PRUNED. CONTRACTOR MUST PROVIDE A ROOT PRUNE SCHEDULE FOR EACH TREE OR PALM TO BE RELOCATED AS AN ATTACHMENT TO THE BID.</div> <div>2.6 CONTRACTOR MUST CALL SUNSHINE 811 TO HAVE ALL UNDERGROUND UTILITIES LOCATED UNDER OR IN THE VICINITY OF THE CURRENT OR FUTURE LOCATIONS OF ALL TREES AND PALMS TO BE RELOCATED PRIOR TO WORK COMMENCING.</div> <div>2.7 CONTRACTOR MUST VERIFY WITH THE GENERAL CONTRACTOR THE ABSENCE OF ANY UNDERGROUND CONSTRUCTION OR OBSTRUCTIONS (E.G., BULKHEADS, SEPTIC SYSTEMS, ETC.) IN THE CURRENT AND FUTURE LOCATIONS OF ALL TREES AND PALMS TO BE RELOCATED.</div> <div>2.8 CONTRACTOR MUST ALERT THE LANDSCAPE ARCHITECT OF ANY TREES OR PALMS THAT WILL NOT SUCCESSFULLY RELOCATE DUE TO POOR HEALTH PRIOR TO BEGINNING ROOT PRUNING.</div> <div>2.9 CONTRACTOR MUST FLAG ALL PROPOSED TRANSPLANT LOCATIONS FOR THE LANDSCAPE ARCHITECT'S APPROVAL A MINIMUM OF 15 DAYS PRIOR TO RELOCATION.</div> <div>2.10 CONTRACTOR MUST ENSURE THAT ALL TREES AND PALMS TO BE RELOCATED ARE INSTALLED AT THE CORRECT GRADE OR ELEVATION, ACCORDING TO THE GRADING PLAN.</div> <div>2.11 CONTRACTOR MUST ENSURE THAT ALL ROOT FLARES ARE EXPOSED AFTER RELOCATION.</div> <div>2.12 CONTRACTOR MUST REMOVE ALL RESIDUAL ROOTS, STUMPS, AND PORTIONS THEREOF AND BACKFILL PITS FROM WHICH RELOCATED TREES AND PALMS WERE REMOVED WITH CLEAN FILL FLUSH WITH THE SURROUNDING GRADE.</div> <div>2.13 CONTRACTOR MUST REPAIR ANY DAMAGE TO OTHER PLANTS, LAWN, HARDSCAPES, OR NEW CONSTRUCTION WITHIN THE RELOCATION AREA AT CONTRACTOR'S EXPENSE. HARDSCAPES INCLUDE BUT ARE NOT LIMITED TO CURBS, WALKS, ROADS, FENCES, SITE FURNISHINGS, ETC.</div> <div>2.14 CONTRACTOR MUST PHOTOGRAPHICALLY DOCUMENT NEW ROOT GROWTH FOLLOWING EACH ROOT PRUNE AND SUBMIT THIS DOCUMENTATION TO THE LANDSCAPE ARCHITECT. THE PURPOSE OF THIS REQUIREMENT IS TO ENSURE THAT SUFFICIENT ROOT GROWTH HAS OCCURRED PRIOR TO THE SECOND AND SUBSEQUENT ROOT PRUNES AND FOLLOWING THE FINAL ROOT PRUNE PRIOR TO RELOCATION.</div> <div>2.15 CONTRACTOR MUST INSTALL AND MAINTAIN PROTECTION FENCING AROUND EACH TREE AND PALM TO BE RELOCATED BOTH DURING ROOT PRUNING AND AFTER RELOCATION. PROTECTION FENCING MUST CONSIST OF GALVANIZED WELDED WIRE FABRIC OR PLASTIC MESH ATTACHED TO 4" X 4" POSTS INSERTED AROUND THE PERIMETER OF THE DRIPLINE OF THE TREE OR PALM. PROTECTION FENCING MUST BE PLUMB, TAUT, AND STURDY AT ALL TIMES AND MUST REMAIN IN PLACE THROUGHOUT THE ROOT PRUNING AND WARRANTY PERIODS, OR AS DIRECTED BY THE LANDSCAPE ARCHITECT.</div> <div>2.16 CONTRACTOR MUST OBTAIN ALL NECESSARY OR REQUIRED PERMITS FOR THE RELOCATION AND TRANSPORTATION OF THE TREES AND PALMS TO BE RELOCATED.</div> <div>2.17 CONTRACTOR MUST REPLACE ANY TREES OR PALMS SCARRED OR DAMAGED DURING RELOCATION, AT THE CONTRACTOR'S EXPENSE, WITH THE SAME OR SIMILAR SPECIES, SIZE, AND QUALITY. REPLACEMENT TREES OR PALMS MUST BE APPROVED BY THE LANDSCAPE ARCHITECT PRIOR TO PROCUREMENT, PREPARATION, AND/OR INSTALLATION. REPLACEMENT TREES AND PALMS MUST BE INSTALLED WITHIN 60 DAYS OF NOTICE.</div> <div>2.18 CONTRACTOR MUST GUARANTEE ALL RELOCATED TREES AND PALMS FOR ONE YEAR FROM THE DATE OF RELOCATION TO THE FINAL LOCATION. GUARANTEE MUST INCLUDE TREE HEALTH AND SETTLING.</div> <div>2.19 CONTRACTOR MUST PROVIDE ALL MATERIAL NECESSARY TO PERFORM THE WORK COVERED HEREIN, INCLUDING BUT NOT LIMITED TO BACKFILL MATERIAL, PROTECTION FENCING, FLAGGING, ADDITIVES AND SUPPLEMENTS, TEMPORARY IRRIGATION, BURLAP, WIRE, SHRINK WRAP, AND ALL NECESSARY TOOLS AND EQUIPMENT.</div> <div>3. ROOT PRUNING SPECIFICATIONS</div> <div>3.1 GENERAL</div> <div>3.1.1 ALL TREES AND PALMS TO BE RELOCATED MUST BE WATERED DAILY FOR AT LEAST 2-3 DAYS PRIOR TO ANY ROOTS BEING CUT TO ENSURE THAT THEY ARE FULLY HYDRATED. EACH WATERING MUST THOROUGHLY SATURATE THE ROOTBALL TO ITS FULL DEPTH.</div> <div>3.1.2 EACH TREE AND PALM MUST THEN BE WATERED EVERY OTHER DAY, NOT RELYING ON RAIN, DURING THE ENTIRE ROOT PRUNING PROCESS EITHER BY A TEMPORARY IRRIGATION SYSTEM OR BY HAND. EACH WATERING MUST THOROUGHLY SATURATE THE ROOTBALL TO ITS FULL DEPTH.</div> <div>3.1.3. TREE AND PALM RELOCATION ACTIVITIES MUST BE SCHEDULED SO THAT REMOVAL AND REPLANTING TAKE PLACE IN THE SAME 24-HOUR PERIOD. NO TREES OR PALMS MAY BE "STOCKPILED" ONSITE OR OFFSITE FOR ANY PERIOD OF TIME WITHOUT PRIOR WRITTEN APPROVAL OF THE LANDSCAPE ARCHITECT. WHEN ALLOWED, APPROVAL FOR THE METHOD OF "STOCKPILING" MUST BE OBTAINED FROM THE LANDSCAPE ARCHITECT.</div> <div>3.1.4. ALL DIGGING IN THE ROOT ZONE DURING THE ROOT PRUNE PROCESS MUST BE DONE BY HAND; NO MACHINERY WILL BE ALLOWED. PRUNING OF ROOTS MUST BE DONE BY HAND WITH CLEAN, SHARP TOOLS. DO NOT PAINT CUT ROOTS WITH TREE PAINT OR ANY KIND OF SEALANT.</div> <div>3.1.5. MYCORRHIZA (ROOTS® TRANSPLANT OR EQUIVALENT) MUST BE INCORPORATED INTO THE BACKFILL SOIL PRIOR TO BACKFILLING AS PER MANUFACTURER'S RECOMMENDATIONS.</div> <div>3.1.6. AFTER EACH ROOT PRUNE, EACH SECTION OF ROOTBALL THAT IS PRUNED MUST BE WRAPPED WITH BLACK PLASTIC AND THE TRENCH BACKFILLED WITH ORIGINAL EXCAVATED SOIL. A TREE RING WITH A MINIMUM HEIGHT OF 6" MUST BE CONSTRUCTED 6-12" OUTSIDE THE OUTERMOST EDGE OF THE ROOTBALL AND AROUND THE ENTIRE PERIMETER OF THE ROOTBALL TO DIRECT IRRIGATION WATER AND ANY ADDED SUPPLEMENTS DOWN INTO THE ROOTBALL DURING ROOT REGENERATION.</div> <div>3.1.7. ONCE THE TREE RING IS CONSTRUCTED AFTER EACH ROOT PRUNE, A HIGH-PHOSPHORUS ROOT STIMULANT MUST BE LIBERALLY APPLIED TO THE SURFACE OF THE ROOTBALL AND THOROUGHLY WATERED IN TO ENCOURAGE NEW ROOT GROWTH.</div> <div>3.2. TREES</div> <div>3.2.1. PRIOR TO ANY ROOTS BEING CUT, ALL MAJOR ROOTS MUST BE IDENTIFIED TO DETERMINE THE ROOTBALL DIAMETER BASED ON THE RELATIVE LOCATION AND SIZE OF THE ROOTS.</div> <div>3.2.2. MANY TREE RELOCATION SPECIFICATIONS USE "GENERAL RULES" TO CALCULATE MINIMUM ROOTBALL DIAMETER, SUCH AS MULTIPLYING THE DIAMETER AT BREAST HEIGHT (DBH) OF THE TREE BY A FACTOR OF 10 OR ALLOWING A MINIMUM OF 9"-12" OF ROOTBALL FOR EVERY 1" OF TREE CALIPER. OTHERS LIST UNREALISTIC MINIMUM SIZES FOR THE ROOTBALLS OF VARIOUS TREE CALIPERS OR HEIGHTS. IN MANY CASES, SUCH APPROACHES RESULT IN ROOTBALLS THAT ARE EITHER TOO LARGE OR TOO SMALL FOR A GIVEN TREE. THE FOLLOWING TABLE LISTS MINIMUM ROOTBALL DIAMETERS BASED ON REAL-WORLD EXPERIENCE OF TREE RELOCATION SPECIALISTS IN SOUTH FLORIDA:</div> <div><table><tr><th>CALIPER (inches)</th><th>MIN. ROOTBALL DIA. (feet)</th><th>CALIPER (inches)</th><th>MIN. ROOTBALL DIA. (feet)</th></tr><tr><td>1 - 4</td><td>3</td><td>12 - 14</td><td>8</td></tr><tr><td>4 - 5</td><td>4</td><td>15 - 17</td><td>10</td></tr><tr><td>6 - 7</td><td>5</td><td>18 - 24</td><td>12 - 15</td></tr><tr><td>8 - 9</td><td>6</td><td>25 - 30</td><td>15 - 25</td></tr><tr><td>10 - 11</td><td>7</td><td>30 +</td><td>as needed</td></tr></table></div> <div>3.2.3. WHENEVER POSSIBLE, ROOTBALLS MUST BE CIRCULAR IN SHAPE WITH AN EQUAL DISTANCE FROM THE TRUNK TO THE EDGE OF THE ROOTBALL ALL AROUND.</div> <div>3.2.4. MINIMUM ROOTBALL DEPTH MUST BE 24"-36" FOR ALL TREES TO BE RELOCATED, WITH THE ACTUAL DEPTH TO BE DETERMINED ONLY AFTER A THOROUGH EXAMINATION OF ALL ROOTS DURING THE INITIAL ROOT INSPECTION AND BASED ON THE ABSENCE OF MAJOR ROOTS AT THE BOTTOM OF THE ROOTBALL. ROOTBALLS DEEPER THAN 36" MAY BE REQUIRED FOR LARGE SPECIMEN TREES, DEPENDING ON THE RELATIVE LOCATIONS AND DEPTHS OF THE MAJOR ROOTS AS OBSERVED DURING THE INITIAL ROOT INSPECTION.</div> <div>3.2.5. AS A GENERAL RULE, MINIMUM ROOT PRUNE TIME FOR TREES WITH A DBH OF LESS THAN 10" IS 12 WEEKS. THE FIRST ROOT PRUNE MUST BE ON TWO OPPOSING SIDES OF THE ROOTBALL, WITH THE SECOND ROOT PRUNE ON ONE OF THE OTHER TWO SIDES DONE A MINIMUM OF 6 WEEKS LATER, AND A THIRD ROOT PRUNE ON THE LAST SIDE DONE A MINIMUM OF 3 WEEKS AFTER THAT. THE SECOND AND THIRD ROOT PRUNES MAY ONLY BE DONE WHEN HEALTHY NEW ROOT GROWTH FROM EARLIER ROOT PRUNES IS EVIDENT (SEE SECTION 2.14 ABOVE FOR SPECIFICATIONS ON PHOTOGRAPHICALLY DOCUMENTING NEW ROOT GROWTH DURING THE ROOT PRUNE PROCESS). MORE TIME MAY BE NEEDED DURING THE COOLER MONTHS OF THE YEAR.</div> <div>3.2.6. AS A GENERAL RULE, MINIMUM ROOT PRUNE TIME FOR TREES WITH A DBH OF 10" OR GREATER IS 24 WEEKS. THE FIRST ROOT PRUNE MUST BE ON TWO OPPOSING SIDES OF THE ROOTBALL, WITH THE SECOND ROOT PRUNE ON ONE OF THE OTHER TWO SIDES DONE A MINIMUM OF 12 WEEKS LATER, AND A THIRD ROOT PRUNE ON THE LAST SIDE DONE A MINIMUM OF 6 WEEKS AFTER THAT. THE SECOND AND THIRD ROOT PRUNES MAY ONLY BE DONE WHEN HEALTHY NEW ROOT GROWTH FROM EARLIER ROOT PRUNES IS EVIDENT (SEE SECTION 2.14 ABOVE FOR SPECIFICATIONS ON PHOTOGRAPHICALLY DOCUMENTING NEW ROOT GROWTH DURING THE ROOT PRUNE PROCESS). MORE TIME MAY BE NEEDED DURING THE COOLER MONTHS OF THE YEAR.</div> <div>3.2.7. CERTAIN HARDWOOD TREES AND GYMNOSPERMS REQUIRE LONGER ROOT PRUNING TIMES. THESE INCLUDE, BUT ARE NOT LIMITED TO, THE FOLLOWING:</div> <div><ul style="list-style-type: none">• AVOCADO (PERSEA AMERICANA)• BLACK OLIVE (BUCIDA BUCERAS)• BRIDAL VEIL (CAESALPINIA GRANADILLO)• CASSIAS (ALL SPECIES OF CASSIA)• LIGNUM VITAE (GUAIACUM SANCTUM & G. OFFICINALE)• PODOCARPUS (PODOCARPUS SP.)• LIVE OAK (QUERCUS VIRGINIANA)• MAHOGANY (SWIETENIA MAHAGONI)• MANGO (MANGIFERA INDICA)• PIGEON PLUM (COCOLOBA DIVERSIFOLIA)• SWEET ACACIA (ACACIA FARNESIANA)• VERAWOOD (BULNESIA ARBOREA)• WILD TAMARIND (LYSILOMA LATISILQUUM & L. SABICU)</div> <div>FOR THESE TREES, THE MINIMUM ROOT PRUNE TIMES DISCUSSED IN SECTIONS 3.2.5 AND 3.2.6 ABOVE MAY BE INSUFFICIENT. ONLY WHEN SUFFICIENT NEW ROOT GROWTH HAS TAKEN PLACE FOLLOWING AN EARLIER ROOT PRUNE CAN THE NEXT ROOT PRUNE BE DONE, AND ONLY WHEN SUFFICIENT NEW ROOT GROWTH HAS TAKEN PLACE FOLLOWING THE FINAL ROOT PRUNE MAY THE TREE BE RELOCATED (SEE SECTION 2.14 ABOVE FOR SPECIFICATIONS ON PHOTOGRAPHICALLY DOCUMENTING NEW ROOT GROWTH DURING THE ROOT PRUNE PROCESS).</div> <div>3.3. PALMS</div> <div>3.3.1. THE FOLLOWING TABLE LISTS MINIMUM ROOTBALL DIAMETERS FOR VARIOUS SPECIES OF PALMS BASED ON REAL-WORLD EXPERIENCE OF RELOCATION SPECIALISTS IN SOUTH FLORIDA:</div> <div><table><tr><th>PALM SPECIES</th><th>ROOTBALL SPECIFICATIONS</th></tr><tr><td>SABAL / CABBAGE PALM</td><td>36" diameter</td></tr><tr><td>QUEEN & FOXTAIL PALMS</td><td>12" from trunk in all directions</td></tr><tr><td>ROYAL & COCONUT PALMS</td><td>18 - 24" from trunk in all directions</td></tr><tr><td>CANARY DATE PALM</td><td>24" from trunk in all directions</td></tr><tr><td>SLOW-GROWING PALMS (see sec 3.3.4)</td><td>24" from trunk in all directions</td></tr></table></div> <div>3.3.2. PALM ROOTBALLS MUST BE A MINIMUM OF 24" DEEP. WHENEVER POSSIBLE, ROOTBALLS MUST BE CIRCULAR IN SHAPE WITH AN EQUAL DISTANCE FROM THE TRUNK TO THE EDGE OF THE ROOTBALL ALL AROUND.</div> <div>3.3.3. AS A GENERAL RULE, MINIMUM ROOT PRUNE TIME FOR PALMS IS 6-8 WEEKS. THE FIRST ROOT PRUNE MUST BE ON TWO OPPOSING SIDES OF THE ROOTBALL, WITH THE SECOND ROOT PRUNE ON ONE OF THE OTHER TWO SIDES DONE A MINIMUM OF 3-4 WEEKS LATER, AND A THIRD ROOT PRUNE ON THE LAST SIDE DONE A MINIMUM OF 4-5-6 WEEKS AFTER THAT. THE SECOND AND THIRD ROOT PRUNES MAY ONLY BE DONE WHEN HEALTHY NEW ROOT GROWTH FROM EARLIER ROOT PRUNES IS EVIDENT (SEE SECTION 2.14 ABOVE FOR SPECIFICATIONS ON PHOTOGRAPHICALLY DOCUMENTING NEW ROOT GROWTH DURING THE ROOT PRUNE PROCESS). MORE TIME MAY BE NEEDED DURING THE COOLER MONTHS OF THE YEAR.</div> <div>3.4.4. CERTAIN PALMS, IN PARTICULAR THOSE THAT ARE SLOW GROWING, REQUIRE LONGER ROOT PRUNING TIME. THESE INCLUDE, BUT ARE NOT LIMITED TO, THE FOLLOWING:</div> <div><ul style="list-style-type: none">• ALL SPECIES OF ARCHONTOPHOENIX• ALL SPECIES OF CORYPHA• AMERICAN OIL PALMS (ALL SPECIES OF ATTALEA)• BISMARCK PALM (BISMARCKIA NOBILIS)• CUBAN & CARIBBEAN COPERNICIA• CUBAN BELLY PALM (GASTROCOCOS CRISPA)• GINGERBREAD/DOUM PALMS (ALL SPECIES OF HYPHAENE)• PALMYRA PALMS (ALL SPECIES OF BORASSUS)• SATAKE PALM (SATAKENTIA LIUKUENSIS)• SAW PALMETTO (SERENOA REPENS)• SILVER PALM (COCOTHRINAX ARGENTATA)• ZOMBIE PALM (ZOMBIA ANTILLARUM)</div> <div>FOR THESE PALMS, THE MINIMUM ROOT PRUNING TIME IS 4-6 MONTHS OR GREATER. ONLY WHEN SUFFICIENT NEW ROOT GROWTH HAS TAKEN PLACE FOLLOWING AN EARLIER ROOT PRUNE CAN THE NEXT ROOT PRUNE BE DONE, AND ONLY WHEN SUFFICIENT NEW ROOT GROWTH HAS TAKEN PLACE FOLLOWING THE FINAL ROOT PRUNE MAY THE TREE BE RELOCATED (SEE SECTION 2.14 ABOVE FOR SPECIFICATIONS ON PHOTOGRAPHICALLY DOCUMENTING NEW ROOT GROWTH DURING THE ROOT PRUNE PROCESS).</div> <div>4. CANOPY PRUNING SPECIFICATIONS</div> <div>4.1. TREES</div> <div>4.1.1. PRIOR TO RELOCATION, THE CANOPY OF EACH TREE TO BE RELOCATED MUST BE SELECTIVELY PRUNED TO REMOVE CROSSING, DEAD, DISEASED, BROKEN, AND LOW-HANGING BRANCHES THAT MAY INTERFERE WITH CONSTRUCTION ACTIVITIES, OR THAT MAY INTERFERE OR RESTRICT STRAPPING OR LIFTING THE TREE DURING RELOCATION.</div> <div>4.1.2. FOR TREES BEING RELOCATED ONSITE, THE CANOPY MAY BE SELECTIVELY THINNED AND REDUCED BY NO MORE THAN 1/3 OF THE OVERALL CANOPY MASS, AT THE DIRECTION OF THE LANDSCAPE ARCHITECT; HOWEVER, THE BASIC SHAPE, FORM, AND CHARACTER OF THE TREE MUST BE PRESERVED.</div> <div>4.1.3. FOR TREES BEING RELOCATED OFFSITE, THE CANOPY MUST BE PRUNED, AT THE DIRECTION OF THE LANDSCAPE ARCHITECT, TO FIT ON THE TRAILER FOR TRANSPORT. EVERY EFFORT MUST BE MADE TO RETAIN AS MANY LARGE BRANCHES AS POSSIBLE AND TO PRESERVE AS MUCH OF THE SHAPE, FORM, AND CHARACTER OF THE TREE AS POSSIBLE TO THE WIDEST LOAD WIDTH ALLOWABLE BY THE FLORIDA DEPARTMENT OF TRANSPORTATION. CONTRACTOR MUST OBTAIN ALL NECESSARY PERMITS AND ESCORTS TO TRANSPORT WIDE LOADS, PER FLORIDA LAW.</div> <div>4.1.4. ALL CANOPY PRUNING MUST BE CONDUCTED FOLLOWING ANSI A-300 TREE PRUNING STANDARDS AND BEST MANAGEMENT PRACTICES.</div> <div>4.1.5. ALL DEBRIS GENERATED DURING CANOPY PRUNING MUST BE REMOVED OFFSITE AND DISPOSED.</div> <div>4.2. PALMS</div> <div>4.2.1. IT IS WELL KNOWN THAT SOME PALMS SURVIVE RELOCATION BETTER WHEN ALL OF THE LEAVES ARE REMOVED (E.G., CABBAGE PALM, SABAL PALMETTO), AND THAT OTHER PALMS BENEFIT FROM HAVING THEIR LEAVES CUT IN HALF DURING RELOCATION (E.G., COCONUT PALM, COCOS NUCIFERA). BOTH OF THESE HORTICULTURAL PRACTICES, WHILE TRUE, ARE ONLY APPLICABLE WHEN PALMS ARE NOT ROOT PRUNED. LEAVES DO NOT NEED TO BE CUT IN HALF OR REMOVED FROM PALMS THAT ARE ADEQUATELY ROOT PRUNED. ON OCCASION WHEN SUFFICIENT ROOT PRUNING TIME IS NOT AVAILABLE, PALMS TO BE RELOCATED MAY HAVE THEIR LEAVES CUT IN HALF OR REMOVED ENTIRELY AT THE DIRECTION OF THE LANDSCAPE ARCHITECT.</div> <div>4.2.2. PALM LEAVES MUST BE TIED UP WITH 2-PLY BIODEGRADABLE TWINE PRIOR TO RELOCATION TO PREVENT MECHANICAL DAMAGE DURING THE RELOCATION PROCESS.</div> <div>4.2.3. PALM TRUNKS SHALL ONLY BE 'CLEANED UP' ACCORDING TO THE LANDSCAPE ARCHITECT'S SPECIFICATIONS SPECIFIC TO EACH PALM.</div> <div>5. RELOCATION SPECIFICATIONS</div> <div>5.1. GENERAL</div> <div>5.1.1. LANDSCAPE CONTRACTOR TO FLAG ALL PROPOSED PLANT LOCATIONS FOR LANDSCAPE ARCHITECT'S APPROVAL PRIOR TO INSTALLATION. NOTIFY LANDSCAPE ARCHITECT A MINIMUM OF 15 DAYS PRIOR TO REVIEW.</div> <div>5.1.2. ALL TREES AND PALMS TO BE RELOCATED MUST BE WATERED DAILY FOR AT LEAST 5 DAYS PRIOR TO ANY RELOCATION TO ENSURE THAT THEY ARE FULLY HYDRATED. EACH WATERING MUST THOROUGHLY SATURATE THE ROOTBALL TO ITS FULL DEPTH.</div> <div>5.1.3. ALL ROOTBALLS MUST BE WRAPPED IN BURLAP AND THEN TIGHTLY WIRE-WRAPPED (USING REDLINE HORSE WIRE OR EQUIVALENT) TO KEEP THE ENTIRE ROOTBALL INTACT DURING RELOCATION. TREES AND PALMS GROWING IN LIMESTONE MUST BE DUG AND RELOCATED WITH THE ROOTS ATTACHED TO A SECTION OF ROCK AS PART OF THE ROOTBALL, SUCH THAT THE ROOTS REMAIN INTACT. ROOTBALLS COMING FROM SAND OR SANDY SOIL MAY ALSO NEED TO BE BOXED PRIOR TO RELOCATION, AT THE DISCRETION OF THE LANDSCAPE ARCHITECT.</div> <div>5.1.4. TREES AND PALMS BEING RELOCATED OFFSITE MUST HAVE THEIR ENTIRE ROOTBALLS THOROUGHLY AND TIGHTLY WRAPPED WITH PLASTIC SHRINK WRAP ON THE OUTSIDE OF THE WIRE WRAP, AND THE ENTIRE TREE OR PALM (INCLUDING CANOPY, TRUNK, AND ROOTBALL) MUST BE COVERED WITH A BREATHABLE TARP (E.G., SHADE CLOTH) DURING TRANSPORT.</div> <div>5.1.5. NEW PLANTING PITS FOR RELOCATED TREES AND PALMS MUST BE PREPARED PRIOR TO LIFTING THE PALM OR TREE FROM ITS CURRENT LOCATION AND MUST BE AT LEAST 3-4 FEET WIDER THAN THE ROOTBALL AND THE SAME DEPTH AS THE ROOTBALL, SUCH THAT THE FINAL ELEVATION OF THE TOP OF THE ROOTBALL IS AT OR SLIGHTLY ABOVE (NO MORE THAN 2" HIGHER) FINAL GRADE.</div> <div>5.1.6. TREES AND PALMS TO BE RELOCATED MUST BE LIFTED BY THE ROOTBALL ONLY, USING APPROPRIATELY SIZED (LENGTH AND STRENGTH) LIFTING STRAPS OR CHAINS. DURING LIFTING, THE TREE OR PALM MUST BE BALANCED IN A MORE-OR-LESS UPRIGHT POSITION, WITH THE STRAP ON THE TRUNK USED ONLY FOR BALANCING AND MANEUVERING THE TREE OR PALM INTO POSITION. NO CHAINS MAY BE USED AROUND OR AGAINST THE TRUNK AT ANY TIME. AT NO TIME SHALL 100% OF THE WEIGHT OF THE TREE OR PALM BE ON THE STRAP ATTACHED TO THE TRUNK. TRUNKS MUST BE HEAVILY PADDED WITH 30-60 LAYERS (DEPENDING ON SIZE AND WEIGHT) OF BURLAP BENEATH THE BALANCING STRAP.</div> <div>5.1.7. TREES AND PALMS MUST BE LIFTED WITH A CRANE OR BACKHOE APPROPRIATELY SIZED FOR THE SIZE AND WEIGHT OF THE TREE OR PALM AND LIFTED OR CARRIED DIRECTLY TO THE FINAL INSTALL LOCATION OR TRANSPORT TRAILER.</div> <div>5.1.8. ONCE LIFTING BEGINS, ANY UNCUT ROOTS UNDER OR AROUND THE ROOTBALL THAT MAY YET REMAIN MUST BE IMMEDIATELY SEVERED WITH HAND PRUNING TOOLS TO MINIMIZE TEARING AND ROOT DAMAGE.</div> <div>5.1.9. AGRIFORM PLANTING TABLETS (OR APPROVED EQUIVALENT) MUST BE EVENLY DISTRIBUTED AROUND THE PERIMETER OF THE PLANTING PIT AT THE RATE OF 2 TABLETS PER 1" TRUNK CALIPER PRIOR TO BACKFILLING.</div> <div>5.1.10. YCORRHIZA (ROOTS® TRANSPLANT OR EQUIVALENT) MUST BE INCORPORATED INTO THE BACKFILL SOIL PRIOR TO BACKFILLING.</div> <div>5.1.11. RELOCATED TREES AND PALMS MUST BE CENTERED IN THE PLANTING PIT, AND THE PIT BACKFILLED USING A 1:1 MIXTURE OF EXISTING SOIL AND 80:20 (DOT SAND:MUCK) SOIL MIX THOROUGHLY BLENDED TOGETHER. DO NOT USE MUDDY SOIL AS BACKFILL. (SEE 5.2.2 BELOW FOR SPECIAL CONDITIONS REGARDING DATE PALM BACKFILL SPECIFICATIONS.)</div> <div>5.1.12. SMALL TREES AND PALMS MUST BE FIRMLY BRACED USING A MINIMUM OF FOUR 4" X 4" WOODEN BRACES ATTACHED TO 2" X 4" WOODEN BATTENS HELD IN PLACE WITH TWO STEEL BANDS. LARGER TREES MAY REQUIRE 6" X 6" WOODEN POSTS OR EVEN TELEPHONE POLES TO PROVIDE SUFFICIENT BRACING STRENGTH TO PREVENT TOPPLING DURING WIND EVENTS. A SUFFICIENT NUMBER OF BATTENS MUST BE STRATEGICALLY PLACED AROUND THE TRUNK SUCH THAT THE STEEL BANDS NEVER CONTACT THE TRUNK. NO BURLAP IS TO REMAIN UNDER THE WOODEN BATTENS ON TREES DURING BRACING, BUT SEVERAL LAYERS OF BURLAP SHOULD BE LEFT UNDER THE WOODEN BATTENS WHEN BRACING PALMS. NAILS SHALL NEVER BE DRIVEN DIRECTLY INTO THE TRUNK DURING BRACING. BRACING MUST REMAIN IN PLACE FOR A MINIMUM OF ONE YEAR.</div> <div>5.1.13. A TREE RING WITH A MINIMUM HEIGHT OF 6" MUST BE CONSTRUCTED 6-12" OUTSIDE THE OUTERMOST EDGE OF THE ROOTBALL AND AROUND THE ENTIRE PERIMETER OF THE ROOTBALL TO DIRECT IRRIGATION WATER AND ANY SUPPLEMENTS THAT ARE ADDED DOWN INTO THE ROOTBALL DURING ROOT REGENERATION.</div> <div>5.1.14. ONCE THE TREE RING IS CONSTRUCTED, A HIGH-PHOSPHORUS ROOT STIMULANT MUST BE LIBERALLY APPLIED TO THE SURFACE OF THE ROOTBALL AND THOROUGHLY WATERED IN.</div> <div>5.1.15. ROOTBALLS MUST BE THOROUGHLY WATERED IN USING A HOSE AND A JOHNSON BAR INSERTED TO THE VERY BOTTOM OF THE ROOTBALL AND SWUNG BACK AND FORTH TO PREVENT FORMATION OF AIR POCKETS. THE JOHNSON BAR TECHNIQUE MUST BE REPEATED AT LEAST ONCE MORE WITHIN ONE WEEK AFTER RELOCATION, AND AGAIN IF ANY SIGNS OF STRESS BECOME APPARENT.</div> <div>5.1.16. ORGANIC MULCH (MELALEUCA IS PREFERRED) MUST BE APPLIED WITHIN 48 HOURS OF RELOCATION AT A DEPTH OF 3-4" OVER THE ENTIRE TOP OF THE ROOTBALL FROM THE TREE RING TO WITHIN 6" OF THE TRUNK. MULCH MUST NOT BE APPLIED OR ALLOWED TO ACCUMULATE DIRECTLY AGAINST THE TRUNK.</div> <div>5.1.17. PITS FROM WHICH THE RELOCATED TREES AND PALMS WERE REMOVED MUST BE CLEANED OF ALL RESIDUAL ROOTS, STUMPS, AND PORTIONS THEREOF AND BACKFILLED WITH CLEAN FILL FLUSH WITH THE SURROUNDING GRADE.</div> <div>5.1.18. RESTORE THE SURFACE WITH MATERIAL TO MATCH ADJACENT AREAS. MATERIAL TO BE APPROVED BY LANDSCAPE ARCHITECT. CONTRACTOR TO PROVIDE A MINIMUM OF ONE YEAR WARRANTY ON SETTLING AND PLANT MATERIAL FROM TIME OF SUBSTANTIAL COMPLETION.</div> <div>5.2. SPECIAL CONDITIONS</div> <div>5.2.1. MULTI-TRUNK TREES AND PALMS MUST BE RELOCATED AS ONE UNIT WITH A SINGLE ROOTBALL.</div> <div>5.2.2. PLANTING PITS FOR EDIBLE DATE PALMS (PHOENIX DACTYLIFERA) MUST BE BACKFILLED WITH PURE DOT SILICA SAND.</div>				CALIPER (inches)	MIN. ROOTBALL DIA. (feet)	CALIPER (inches)	MIN. ROOTBALL DIA. (feet)	1 - 4	3	12 - 14	8	4 - 5	4	15 - 17	10	6 - 7	5	18 - 24	12 - 15	8 - 9	6	25 - 30	15 - 25	10 - 11	7	30 +	as needed	PALM SPECIES	ROOTBALL SPECIFICATIONS	SABAL / CABBAGE PALM	36" diameter	QUEEN & FOXTAIL PALMS	12" from trunk in all directions	ROYAL & COCONUT PALMS	18 - 24" from trunk in all directions	CANARY DATE PALM	24" from trunk in all directions	SLOW-GROWING PALMS (see sec 3.3.4)	24" from trunk in all directions	ARCH. SEAL:	
CALIPER (inches)	MIN. ROOTBALL DIA. (feet)	CALIPER (inches)	MIN. ROOTBALL DIA. (feet)																																						
1 - 4	3	12 - 14	8																																						
4 - 5	4	15 - 17	10																																						
6 - 7	5	18 - 24	12 - 15																																						
8 - 9	6	25 - 30	15 - 25																																						
10 - 11	7	30 +	as needed																																						
PALM SPECIES	ROOTBALL SPECIFICATIONS																																								
SABAL / CABBAGE PALM	36" diameter																																								
QUEEN & FOXTAIL PALMS	12" from trunk in all directions																																								
ROYAL & COCONUT PALMS	18 - 24" from trunk in all directions																																								
CANARY DATE PALM	24" from trunk in all directions																																								
SLOW-GROWING PALMS (see sec 3.3.4)	24" from trunk in all directions																																								

<div><div>MIAMI BEACH</div><div>OFFICE OF CAPITAL IMPROVEMENT PROJECTS</div><div>1701 MERIDIAN AVENUE, MIAMI BEACH, FL 33139</div></div>		<div><div>CITY MANAGER: ALINA T. HUDAK</div><div>DIRECTOR: DAVID MARTINEZ, P.E.</div><div>CITY ENGINEER: CRISTINA ORTEGA CASTINEIRAS, P.E.</div></div>	<div><div>5</div><div>4</div><div>3</div><div>2</div><div>1</div><div>NO.</div><div>DATE</div><div>REVISION</div><div>APP'D. BY</div></div>	<div><div><div>BROOKS + SCARPA</div><div>1147 NE 7th Ave</div><div>Fort Lauderdale, FL 33304</div></div></div>	<div><div>ARCHITECT OF RECORD:</div><div>Jeffrey Huber</div><div>#AR65514</div><div>#LAB667547</div></div>	<div><div>ARCHITECT OF RECORD: _____</div><div>DESIGN ARCHITECT: XXX</div><div>DRAWN BY: XXX</div><div>CHECKER: XXX</div><div>SCALE: 1"=20'</div></div>	<div><div>NEIGHBORHOOD:</div><div>41ST ST CORRIDOR REVITALIZATION</div><div>TITLE:</div><div>GENERAL NOTES - TREE DISPOSITION</div></div>	<div><div>File Name: 41STCORR - L0-0 - GENERAL NOTES.dwg</div><div>Survey Reference:</div><div>Field Book: N/A Page: N/A Work Order: N/A</div><div>Date: 4/17/2023 Sheet: 75 of 124 Drawing: L0-10</div></div>
--	--	--	---	--	--	---	---	--

GENERAL LANDSCAPE NOTES AND SPECIFICATIONS

6. MAINTENANCE SPECIFICATIONS

6.1. GENERAL

- 6.1.1. ALL RELOCATED TREES AND PALMS MUST BE MAINTAINED FOR ONE YEAR FROM THE DATE OF RELOCATION TO THEIR FINAL LOCATIONS.
- 6.1.2. CONTRACTOR MUST MAINTAIN ALL RELOCATED TREES AND PALMS FOR ONE FULL YEAR FROM THE DATE OF RELOCATION TO THE FINAL LOCATION.
- 6.1.3. WHENEVER POSSIBLE, EACH TREE AND PALM MUST BE WATERED BY A PERMANENT AUTOMATIC IRRIGATION SYSTEM FOLLOWING RELOCATION. EACH WATERING MUST THOROUGHLY SATURATE THE ROOTBALL TO ITS FULL DEPTH; THIS WILL REQUIRE 25-50 GALLONS OF WATER FOR SMALL TREES AND PALMS, DEPENDING ON ROOTBALL SIZE, WHILE LARGE TREES WILL REQUIRE A MINIMUM OF 10 GALLONS PER FOOT OF ROOTBALL DIAMETER (I.E., A 10" DIAMETER ROOTBALL WILL REQUIRE A MINIMUM OF 100 GALLONS PER WATERING EVENT). WATERING FREQUENCY MUST BE EVERY DAY FOR THE FIRST TWO WEEKS, EVERY OTHER DAY FOR THE NEXT THREE WEEKS, AND EVERY THIRD DAY FOR THE NEXT 6-8 WEEKS.
- 6.1.4. WHEN AN AUTOMATIC IRRIGATION SYSTEM IS NOT POSSIBLE, CONTRACTOR IS RESPONSIBLE FOR HAND WATERING RELOCATED TREES AND PALMS THROUGHOUT THE MAINTENANCE PERIOD AND UNTIL FINAL ACCEPTANCE BY THE LANDSCAPE ARCHITECT AND/OR CLIENT.
- 6.1.5. IMMEDIATELY AFTER RELOCATION TO THE FINAL LOCATION, A HIGH-PHOSPHORUS ROOT STIMULANT MUST BE APPLIED TO THE SURFACE OF THE ROOTBALL AT THE RECOMMENDED LABEL RATE AND WATERED IN WITH A DRENCH CONSISTING OF A SYSTEMIC INSECTICIDE AND A CONTACT ROOT ROT FUNGICIDE, FOLLOWING LABEL INSTRUCTIONS, AS INITIAL PREVENTATIVE MAINTENANCE.
- 6.1.6. EVERY THREE MONTHS THEREAFTER, A HIGH-PHOSPHORUS ROOT STIMULANT MUST BE APPLIED TO THE SURFACE OF THE ROOTBALL AT THE RECOMMENDED LABEL RATE AND WATERED IN WITH A DRENCH CONSISTING OF A SYSTEMIC INSECTICIDE AND A BROAD-SPECTRUM SYSTEMIC FUNGICIDE, FOLLOWING LABEL INSTRUCTIONS, AS CONTINUING PREVENTATIVE MAINTENANCE.
- 6.1.7. IRRIGATION AND BRACING MUST BE CHECKED AND EACH TREE OR PALM THOROUGHLY INSPECTED FOR SIGNS OF STRESS, DISEASE, OR PEST PROBLEMS ON A MONTHLY BASIS.

6.2. SHADE TREES

- 6.2.1. IMMEDIATELY AFTER RELOCATION TO THE FINAL LOCATION AND EVERY THREE MONTHS THEREAFTER, A HIGH-QUALITY, SLOW-RELEASE 15-2-15 GRANULAR FERTILIZER MUST BE APPLIED, AT THE RECOMMENDED LABEL RATE, SPREAD EVENLY ACROSS THE SURFACE OF THE ROOTBALL.
- 6.2.2. FOLIAR FEED FOUR TIMES PER YEAR.

6.3. FLOWERING TREES

- 6.3.1. IMMEDIATELY AFTER RELOCATION TO THE FINAL LOCATION AND EVERY THREE MONTHS THEREAFTER, A HIGH-QUALITY, SLOW-RELEASE 5-10-15 GRANULAR FERTILIZER MUST BE APPLIED, AT THE RECOMMENDED LABEL RATE, SPREAD EVENLY ACROSS THE SURFACE OF THE ROOTBALL.
- 6.3.2. FOLIAR FEED FOUR TIMES PER YEAR.

6.4. PALMS

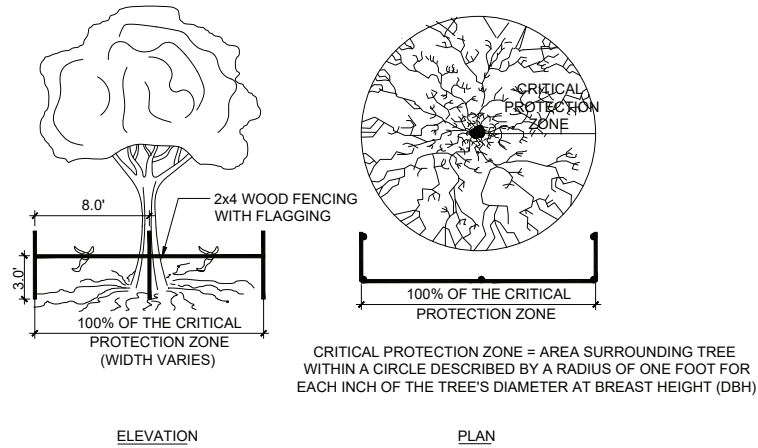
- 6.4.1. STRING MUST BE REMOVED FROM THE TIED UP LEAVES IMMEDIATELY AFTER RELOCATION TO THE FINAL LOCATION IF THE PALM WAS ROOT PRUNED OR WITHIN 30-45 DAYS AFTER RELOCATION ON THE OCCASION THE LANDSCAPE ARCHITECT APPROVED RELOCATION WITHOUT ROOT PRUNING DUE TO TIME CONSTRAINTS.
- 6.4.2. IMMEDIATELY AFTER RELOCATION TO THE FINAL LOCATION AND EVERY THREE MONTHS THEREAFTER, A HIGH-QUALITY, SLOW-RELEASE 8-4-12 GRANULAR PALM FERTILIZER WITH MINORS MUST BE APPLIED, AT THE RECOMMENDED LABEL RATE, SPREAD EVENLY ACROSS THE SURFACE OF THE ROOTBALL.
- 6.4.3. FOLIAR FEED SIX TIMES PER YEAR.

7. TREE PROTECTION SPECIFICATIONS

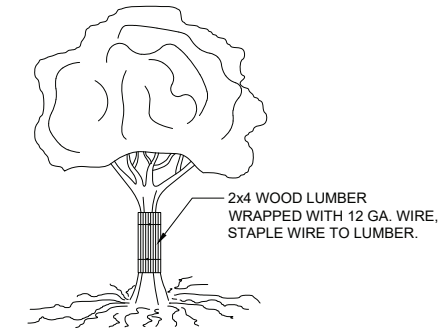
- 7.1. TREE PROTECTION FENCES SHALL BE CONSTRUCTED PRIOR TO ANY CONSTRUCTION ACTIVITY INCLUDING GRUBBING FOR ALL TREES / PALMS TO REMAIN OR BE RELOCATED.
- 7.2. FENCES SHOULD BE OF STURDY CONSTRUCTION, PREFERABLY 4"x4" POSTS WITH WIRE MESH. ORANGE PLASTIC MESH FENCES ARE INEFFECTIVE BECAUSE THEY ARE EASILY REMOVED, DROPPED, KNOCKED DOWN, IGNORED, ETC.
- 7.3. FENCES MUST BE MAINTAINED INTACT UNTIL THE PROJECT IS COMPLETED. THEY SHOULD NOT BE REMOVED OR DROPPED FOR ANY REASON WITHOUT AUTHORIZATION FROM THE CITY'S URBAN FORESTER.
- 7.4. NO ACTIVITY OR DISTURBANCE SHOULD OCCUR WITHIN THE FENCED AREAS, INCLUDING VEHICLE USE, STORAGE OF MATERIALS, DUMPING OF LIQUIDS OR MATERIALS, GRADE CHANGES, GRUBBING, MECHANICAL TRENCHING FOR IRRIGATION, ELECTRICAL LIGHTING, ETC.

8. WARRANTY

- 8.1. ALL RELOCATED TREES AND PALMS MUST BE GUARANTEED FOR ONE YEAR FROM THE DATE OF RELOCATION TO THEIR FINAL LOCATIONS.
- 8.2. IF A TREE OR PALM DIES WITHIN THE 1-YEAR WARRANTY PERIOD, IT MUST BE REMOVED AND REPLACED AT CONTRACTOR'S EXPENSE.
- 8.3. IF A TREE OR PALM PERFORMS POORLY WITHIN THE 1-YEAR WARRANTY PERIOD, IT MUST BE REMOVED AND REPLACED AT THE CONTRACTOR'S EXPENSE. THE DECISION TO REPLACE BASED ON POOR HEALTH IS AT THE DISCRETION OF THE LANDSCAPE ARCHITECT.
- 8.4. IF A TREE OR PALM SETTLES TO AN UNHEALTHY DEPTH WITHIN THE 1-YEAR WARRANTY PERIOD, AS DEEMED BY THE LANDSCAPE ARCHITECT, IT MUST BE RAISED TO THE CORRECT GRADE AT CONTRACTOR'S EXPENSE.



1 TREE BARRICADE DETAIL
SCALE: N/A



2 TREE TRUNK PROTECTION DETAIL
SCALE: N/A

NOTES:

ARCH. SEAL:

MIAMI BEACH

OFFICE OF CAPITAL IMPROVEMENT PROJECTS
1701 MERIDIAN AVENUE, MIAMI BEACH, FL 33139

CITY MANAGER: ALINA T. HUDAK
DIRECTOR: DAVID MARTINEZ, P.E.
CITY ENGINEER: CRISTINA ORTEGA CASTINEIRAS, P.E.

5			
4			
3			
2			
1			
NO.	DATE	REVISION	APP'D. BY

BROOKS + SCARPA
1147 NE 7th Ave
Fort Lauderdale, FL 33304

ARCHITECT OF RECORD:
Jeffrey Huber
#AR95514
#LA6667547

ARCHITECT OF RECORD: _____
DESIGN ARCHITECT: XXX
DRAWN BY: XXX
CHECKER: XXX
SCALE: 1"=20'

NEIGHBORHOOD: 41ST ST CORRIDOR REVITALIZATION
TITLE: GENERAL NOTES - TREE DISPOSITION

File Name: 41STCORR - L0-0 - GENERAL NOTES.dwg
Survey Reference:
Field Book: N/A Page: N/A Work Order: N/A
Date: 4/17/2023 Sheet: 76 of 124 Drawing: L0-11

1. LANDSCAPE CONTRACTOR SHALL BECOME FAMILIAR WITH THE SCOPE OF WORK AS WELL AS THE SITE, DIGGING CONDITIONS, AND ANY OBSTACLES PRIOR TO SUBMITTING A BID.
2. LANDSCAPE CONTRACTOR SHALL PROVIDE AN INSTALLATION SCHEDULE TO THE GENERAL CONTRACTOR AND LANDSCAPE ARCHITECT FOR REVIEW AND APPROVAL.
3. LANDSCAPE CONTRACTOR SHOULD VERIFY ALL ESTIMATED QUANTITIES OF MATERIAL SHOWN ON THE LANDSCAPE ARCHITECT'S DRAWINGS PRIOR TO SUBMITTING A BID.
4. PLANT LIST SHALL TAKE PRECEDENCE OVER PLANTING PLAN IN CASE OF DISCREPANCIES.
5. ALL PLANT MATERIAL SYMBOLS SHOWN ON LANDSCAPE PLANS SHALL BE CONSIDERED DIAGRAMMATIC AND SHOULD BE ADJUSTED IN THE FIELD BY LANDSCAPE CONTRACTOR TO AVOID ALL UTILITIES AND ALL OTHER OBSTRUCTIONS, AFTER CONSULTING THE LANDSCAPE ARCHITECT.
6. ALL SIZES SPECIFIED FOR PLANT MATERIAL ON THE PLAN AND PLANT LIST SHALL BE CONSIDERED MINIMUM.
7. ALL PLANT MATERIAL MUST MEET OR EXCEED THE SPECIFIED MINIMUM REQUIREMENTS FOR BOTH HEIGHT AND SPREAD. MEASURE ALL INSTALLED PLANTS AND COMPARE AGAINST SPECIFICATIONS.
8. ANY SPECIFIC REQUIREMENTS SUCH AS SPECIFIC SHAPE, CHARACTER, NUMBER OF TREE TRUNKS, PLANT SOURCE, TRANSPORTING, AND OR SPECIAL BRACING NOTED ON THE PLAN OR PLANT LIST, WILL REQUIRE APPROVAL AND OR COORDINATION WITH THE LANDSCAPE ARCHITECT.
9. NO CHANGE OR SUBSTITUTION SHALL BE MADE WITHOUT PRIOR APPROVAL OF THE LANDSCAPE ARCHITECT.
10. ALL MATERIAL SHALL BE SUBJECT TO AVAILABILITY AT TIME OF INSTALLATION. SUBSTITUTIONS MAY BE MADE AFTER CONSULTATION WITH THE LANDSCAPE ARCHITECT
11. ALL TREES, PALMS, SHRUBS AND GROUND COVERS SHALL BE GUARANTEED FOR A PERIOD OF 12 MONTHS FROM DATE OF FINAL ACCEPTANCE.
12. CHANGES MAY OCCUR DURING THE NORMAL COURSE OF IMPLEMENTATION. VERBAL CHANGE ORDERS WILL NOT BE HONORED. ANY CHANGES MUST BE SUBMITTED TO THE LANDSCAPE ARCHITECT IN WRITING AS A CHANGE ORDER TO BE REVIEWED AND APPROVED IN WRITING BY OWNER/CLIENT.
13. LANDSCAPE CONTRACTOR SHALL LOCATE AND VERIFY ALL UNDERGROUND UTILITIES OR STRUCTURES PRIOR TO DIGGING. LANDSCAPE CONTRACTOR SHALL REPAIR ALL DAMAGES TO UNDERGROUND UTILITIES, AND OR CONSTRUCTION CAUSED BY LANDSCAPE INSTALLATION, AT NO COST TO THE OWNER.
14. LANDSCAPE CONTRACTOR SHALL COORDINATE WITH THE GENERAL CONTRACTOR, THE REMOVAL OF ALL BUILDING CONSTRUCTION DEBRIS AND FOREIGN MATERIAL PRIOR TO INSTALLATION OF ANY PLANT MATERIAL.
15. SITE PREPARATION SHOULD INCLUDE THE ERADICATION AND REMOVAL OF ANY WEEDS OR GRASS, REMOVAL AND CLEAN UP OF ANY DEAD MATERIAL AND ROUGH AND FINISH GRADING PER SPECS AND OR LANDSCAPE PLANS.
16. FOR PLANT MATERIAL DESIGNATED TO BE REMOVED, THE ENTIRE ROOT SYSTEM SHALL BE DUG AND REMOVED FROM THE SITE.
17. ALL PLANTING AREAS SHALL BE EXCAVATED TO A MINIMUM OF 6" FOR GROUNDCOVERS AND MORE THAN 12" FOR SHRUBS, TREES, AND PALMS, AND SHOULD RECEIVE PLANTING SOIL TYPE 1 (REFER TO SOIL SPECIFICATIONS LP. 402) (COARSE SAND 70%, FLORIDA PEAT 20%, PINE BARK 10% FINAL TESTED ORGANIC MATTER BETWEEN 1.5% & 2.5% (BY DRY WEIGHT)). SUBMIT ALL TESTING DATA FOR APPROVAL BY LANDSCAPE ARCHITECT.
18. ALL PLANT MATERIAL SHALL BE FLORIDA NO. 1 OR BETTER. FLORIDA DEPARTMENT OF AGRICULTURE GRADES AND STANDARDS, PARTS I & II, 1975, RESPECTIVELY.
19. ALL TREES SHALL BE STAKED IN A GOOD WORKMANLIKE MANNER. NO NAIL STAKING PERMITTED. (REFER TO BRACING NOTES AND PLANTING DETAILS)
20. AFTER REMOVAL OR RELOCATION OF EXISTING TREES AND PALMS, ALL REMAINING HOLES SHALL BE BACK FILLED AROUND AND UNDER ROOT BALL WITH WASHED BEACH SAND. SOD DISTURBED AREA, IF REQUIRED. ALL SHRUB BEDS TO BE INSTALLED WITH WASHED BEACH SAND. (SEE SPEC)
21. ALL TREES, PALMS, SHRUBS AND GROUND COVER PLANTS SHALL BE FERTILIZED AT INSTALLATION, WITH LONG LASTING FERTILIZER, ACCORDING TO MANUFACTURERS' RECOMMENDATIONS AND BASED ON EXISTING SOIL TEST.
22. ALL EXISTING PLANT MATERIAL TO REMAIN, SHALL BE PROTECTED DURING ALL CONSTRUCTION PHASES. ANY PLANT MATERIAL SCARRED OR DESTROYED DESIGNATED TO REMAIN MUST BE REPLACED AT THE CONTRACTOR'S EXPENSE WITH SIMILAR SPECIES SIZE AND QUALITY.
23. ALL TREES ON SOD AREA SHALL RECEIVE A HARDWOOD / PINE NEEDLE MULCH MIX RING 2" IN DIAMETER TYPICAL. MULCH TO BE APPROVED BY LANDSCAPE ARCHITECT PRIOR TO PURCHASE AND/OR INSTALLATION.
24. ALL PLANTING AREAS SHALL BE MULCHED WITH PINE STRAW MULCH TO A MINIMUM OF 3"; WITH THE EXCEPTION OF BEACH PLANTING. DO NOT USE CYPRESS OR RED MULCH.
25. ALL TREES SHALL HAVE 2" CALIPER AT D.B.H. MINIMUM FOR A 10' HEIGHT TREE, UNLESS NOTED OTHERWISE.
26. ALL 1 GALLON MATERIAL SHALL HAVE 12" SPREAD MINIMUM, ALL 3 GALLON MATERIAL TO HAVE 20-24" SPREAD MINIMUM.
27. ALL PLANTING AREAS WITHIN THE LIMITS OF WORK SHALL RECEIVE 100% COVERAGE BY AUTOMATIC IRRIGATION SYSTEM (DRIP PREFERRED) UNLESS OTHERWISE DIRECTED BY OWNER. SEE IRRIGATION PLANS FOR ADDITIONAL SPECIFICATIONS.
28. LANDSCAPE CONTRACTOR SHALL COORDINATE HIS WORK WITH ALL OTHER APPROPRIATE CONTRACTORS.

- GENERAL TREE BRACING NOTES AND SPECIFICATIONS:

TREES AND PALMS GREATER THAN 6" DBH TO BE BRACED WITH PROPS

1. CHOOSE THE CORRECT SIZE, LENGTH, AND NUMBER OF PROPS TO BE USED (PRESSURE TREATED (PT), TIMBER BAMBOO (GUADUA ANGUSTIFOLIA) 3" DIA.).
2. ALL (PRESSURE TREATED (PT) 2"x4", 4"x4"). STAKES SHALL BE PAINTED AS SPECIFIED BY THE LANDSCAPE ARCHITECT. WRAP AT LEAST 5 LAYERS OF BURLAP AROUND TRUNK OF THE PALM AT LEAST 4 INCHES WIDER THAN THE BATTENS BEING USED. BATTENS SHOULD BE MOUNTED AT A POINT 1/3 OF THE DISTANCE FROM GROUND TO THE CLEAR TRUNK OF THE TREE OR PALM, BUT NOT LESS THAN 4 FEET, WHICHEVER IS GREATER. ALL PAINT COLORS TO BE APPROVED BY LANDSCAPE ARCHITECT.
3. SELECT THE PROPER LENGTH AND SIZE OF BATTENS (PT 2"x4"x12'-16")
4. USE THE SAME NUMBER OF BATTENS AS PROPS BEING USED.
5. PLACE THE BATTENS VERTICALLY AND EVENLY SPACED AGAINST THE BURLAP.
6. SECURE THE BATTENS IN PLACE WITH METAL OR PLASTIC BANDING STRAPS. DO NOT NAIL TREE.
7. WEDGE LOWER END OF PROP INTO SOIL AND SECURE WITH A 2"x4"x30" STAKE. PROPS SHOULD BE INSTALLED AT A 30 TO 40 DEGREE ANGLE FROM THE BATTENS AND OF SUFFICIENT LENGTH TO REACH THE GROUND. NOTE: ON STRAIGHT TREES OR PALMS OR TREES, SPACE PROPS EQUAL DISTANCE AROUND TREE OR PALM. ON CURVED (CHARACTER) PALMS OR TREES, SPACE PROPS AGAINST THE FRONT OF THE CURVE OF THE PALM.
8. CUT A SMOOTH ANGLE AT THE END OF THE PROPS. ALIGN WITH AND NAIL INTO BATTENS. DO NOT PENETRATE TREE OR PALM WITH NAILS.
9. IF IT APPEARS THAT ADDITIONAL CONSTRUCTION WORK WILL TAKE PLACE NEAR TO OR IN THE VICINITY OF THE NEWLY BRACED TREES OR PALMS, THEN PROPS ARE TO BE CLEARLY LABELED WITH THE STATEMENT, "DO NOT REMOVE."
10. PROPS ARE NOT TO BE REMOVED UNTIL APPROVED BY THE LANDSCAPE CONTRACTOR.

TREES AND PALMS LESS THAN 6" DBH TO BE BRACED BY GUYING:

1. CHOOSE THE CORRECT SIZE AND NUMBER OF STAKES AND SIZE OF HOSE AND WIRE. GUYING SHALL BE COMPLETED WITHIN 48 HOURS OF PLANTING THE TREE.
2. CUT LENGTHS OF STAKING HOSE TO EXTEND 2 INCHES PAST TREE TRUNK WHEN WRAPPING AROUND.
3. SPACE STAKES EVENLY ON OUTSIDE OF WATER RING AND DRIVE EACH FIRMLY INTO THE GROUND. STAKES SHOULD BE DRIVEN AT A 30 DEGREE ANGLE WITH THE POINT OF THE STAKE TOWARD THE TREE UNTIL 4 TO 5 INCHES ARE LEFT SHOWING.
4. PLACE THE HOSE AROUND THE TRUNK JUST ABOVE THE LOWEST BRANCH.
5. THREAD THE WIRE THROUGH THE HOSE AND PAST THE STAKE, ALLOWING APPROXIMATELY 2 FEET OF EACH OF THE TWO ENDS BEYOND THE STAKE BEFORE CUTTING THE WIRE.
6. TWIST WIRE AT RUBBER HOSE TO KEEP IT IN PLACE.
7. PULL WIRE DOWN AND WIND BOTH ENDS AROUND STAKE TWICE. TWIST WIRE BACK ONTO ITSELF TO SECURE IT BEFORE CUTTING OFF THE EXCESS.
8. THE ABOVE PROCEDURES ARE TO BE FOLLOWED FOR EACH STAKE, KEEPING THE TREE STRAIGHT AT ALL TIMES.
9. THERE SHOULD BE A 1 TO 3 INCH SWAY IN THE TREE (THE WIRES SHOULD NOT BE PULLED TIGHT) FOR BEST ESTABLISHMENT.
10. FLAG THE GUY WIRES WITH SURVEYOR'S FLAGGING OR APPROVED EQUAL FOR SAFETY.
11. ANY WIRES ARE NOT TO BE REMOVED UNTIL APPROVED BY LANDSCAPE ARCHITECT.

SHOP DRAWINGS / SUBMITTALS AND MOCK-UPS

1. LANDSCAPE: SUBMIT PHOTOGRAPHS OF ALL MATERIALS WITH SCALE REFERENCE. INDICATE GROWER'S LOCATION AND ANY LEAD TIME FOR ROOT PRUNING OR PREPARATION.

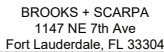
NOTES

ARCH. SEAL:



CITY MANAGER: ALINA T. HUDAK
DIRECTOR: DAVID MARTINEZ, P.E.
CITY ENGINEER: CRISTINA ORTEGA
CASTINEIRAS, P.E.

5			
4			
3			
2			
1			
NO.	DATE	REVISION	APP'D. BY



ARCHITECT OF RECORD:
Jeffrey Huber
#AR95514
#LA6667547

ARCHITECT OF RECORD: _____
DESIGN ARCHITECT: XXX
DRAWN BY: XXX
CHECKER: XXX
SCALE: 1"=20'

NEIGHBORHOOD:

TITLE:

41ST ST CORRIDOR REVITALIZATION

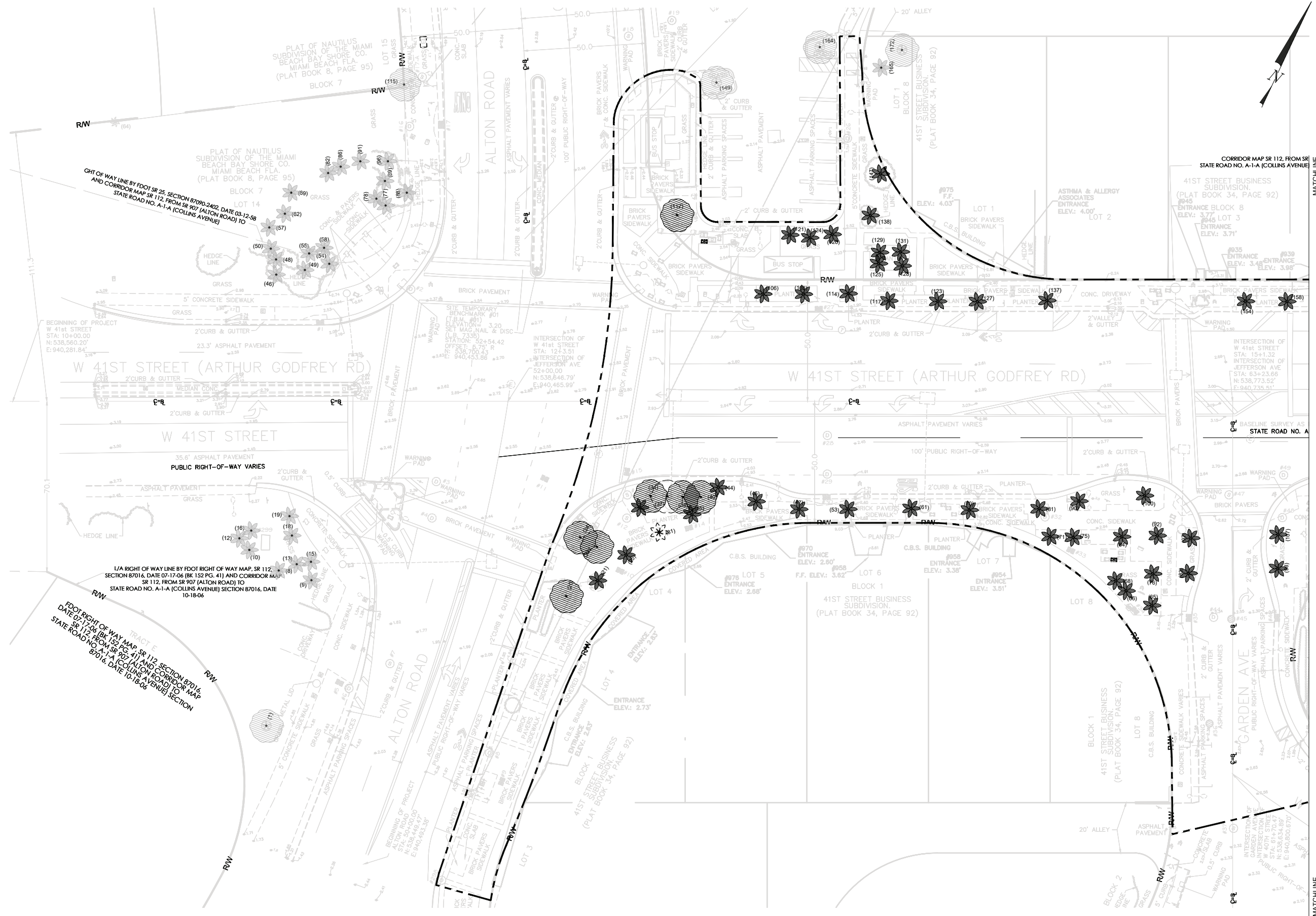
GENERAL NOTES - PLANTING PLAN

File Name: 41STCORR - L0-0 - GENERAL NOTES.dwg

Survey Reference:

Field Book: N/A Page: N/A Work Order: N/A

Date: 4/17/2023 Sheet: 77 of 124 Drawing: L0-50



NOTES:

TREE DISPOSITION LEGEND

EXISTING TO REMAIN

PALM



TREE



EXISTING TO REMOVE

PALM



TREE



EXISTING OFF-SITE

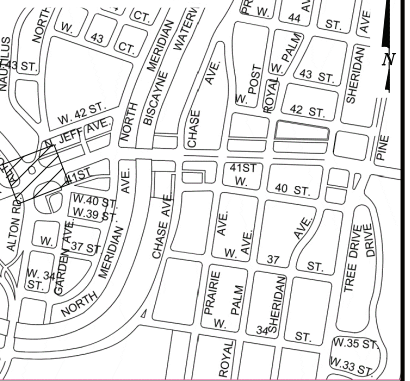
PALM



TREE



KEY PLAN (NOT TO SCALE):



ARCH. SEAL:



OFFICE OF CAPITAL IMPROVEMENT PROJECTS
1701 MERIDIAN AVENUE, MIAMI BEACH, FL.33139

CITY MANAGER: ALINA T. HUDAK
DIRECTOR: DAVID MARTINEZ, P.E.
PUBLIC WORK DIRECTOR: JOE GOMEZ, P.E.
CITY ENGINEER: CRISTINA ORTEGA
CASTINEIRAS, P.E.

5			
4			
3			
2			
1			
NO.	DATE	REVISION	APP'D. BY



BROOKS + SCARPA
1147 NE 7th Ave
Fort Lauderdale, FL 33304

ARCHITECT OF RECORD:

Jeffrey Huber
#AR95514
#A6667547

ARCHITECT OF RECORD: _____
DESIGN ARCHITECT: J.H.
DRAWN BY: K.L.
CHECKER: J.H.
SCALE: 1"=20'

NEIGHBORHOOD:

41ST ST CORRIDOR REVITALIZATION

TITLE:

TREE DISPOSITION PLAN

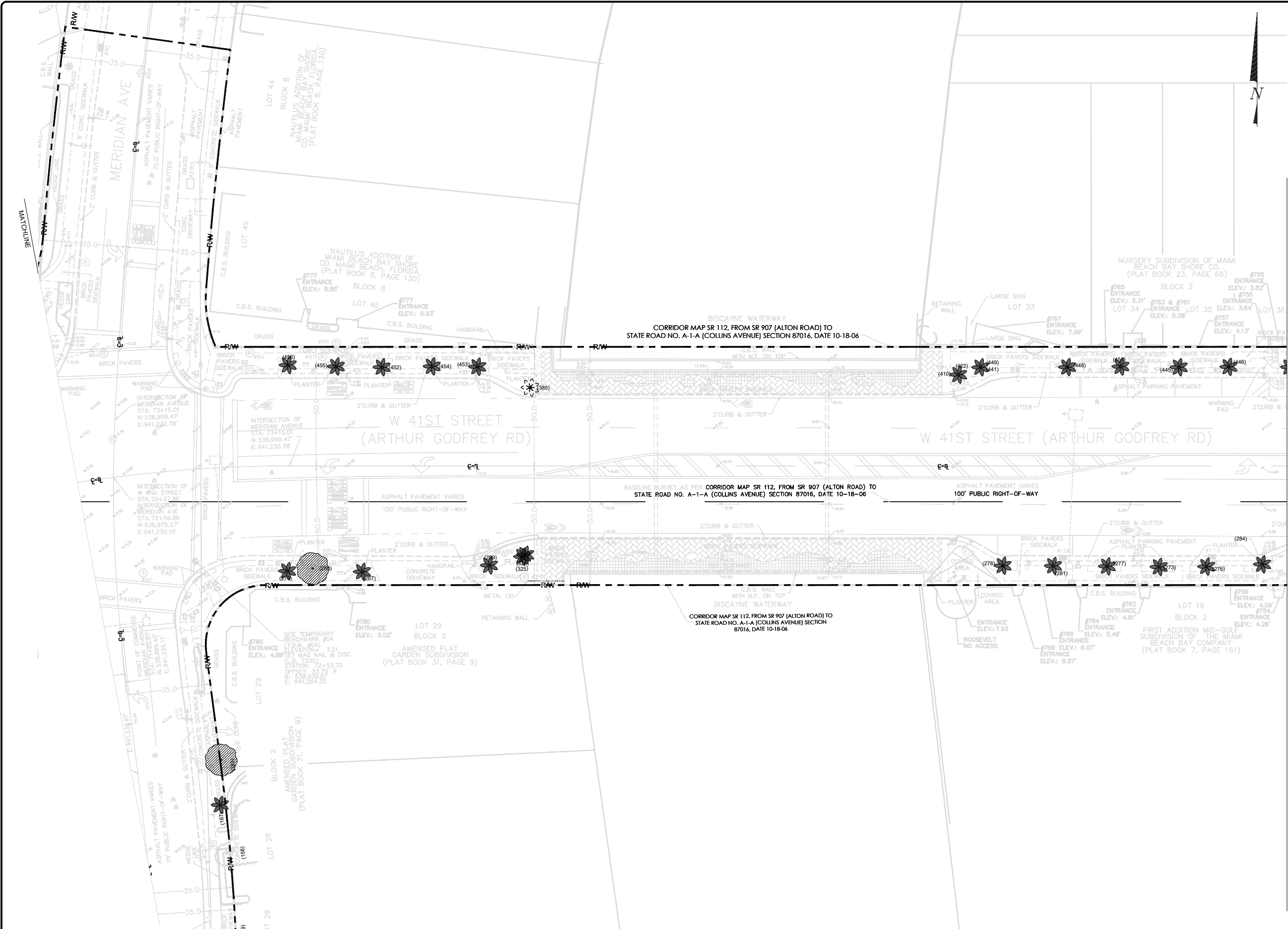
File Name: 41STCORR - 1-1 - TREE DISPOSITION PLANS.dwg

Survey Reference:	
-------------------	--

Field Book: N/A Page: N/A Work Order: N/ADate: 4/17/2023 Sheet: 78 of 124

Drawing:

1-10



NOTES:

TREE DISPOSITION LEGEND

EXISTING TO REMAIN



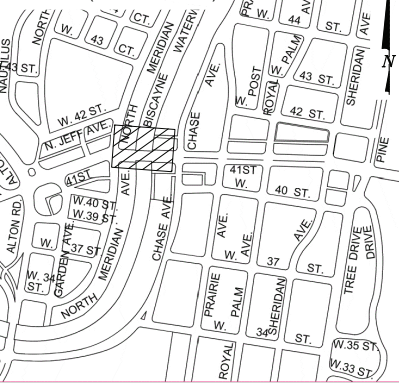
EXISTING TO REMOVE



EXISTING OFF-SITE



KEY PLAN (NOT TO SCALE):



ARCH. SEAL:

OFFICE OF CAPITAL IMPROVEMENT PROJECTS
1701 MERIDIAN AVENUE, MIAMI BEACH, FL 33139

CITY MANAGER: ALINA T. HUDAK
DIRECTOR: DAVID MARTINEZ, P.E.
PUBLIC WORK DIRECTOR: JOE GOMEZ, P.E.
CITY ENGINEER: CRISTINA ORTEGA CASTINEIRAS, P.E.

5			
4			
3			
2			
1			
NO.	DATE	REVISION	APP'D. BY

BROOKS + SCARPA
1147 NE 7th Ave
Fort Lauderdale, FL 33304

ARCHITECT OF RECORD:
Jeffrey Huber
#AR05514
#LA6667547

ARCHITECT OF RECORD:
DESIGN ARCHITECTXXX
DRAWN BY: XXX
CHECKER: XXX
SCALE: 1"=20'

NEIGHBORHOOD:
41ST ST CORRIDOR REVITALIZATION

TITLE:
TREE DISPOSITION PLAN

File Name: 41STCORR - L1-1 - TREE DISPOSITION PLANS.dwg
Survey Reference:
Field Book: N/A Page: N/A Work Order: N/A
Date: 4/17/2023 Sheet: 80 of 124

Drawing:
L1-12

MATCHLINE

MATCHLINE

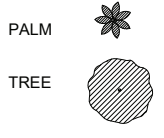
MATCHLINE

MATCHLINE

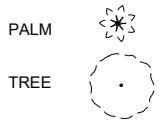
NOTES:

TREE DISPOSITION LEGEND

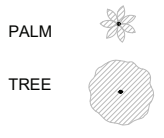
EXISTING TO REMAIN



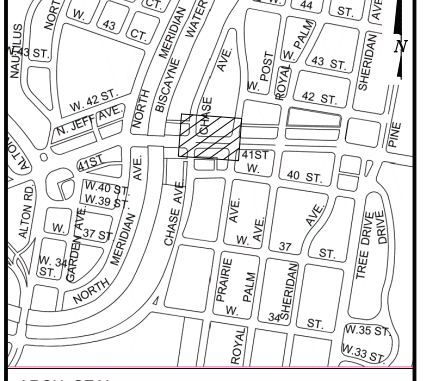
EXISTING TO REMOVE



EXISTING OFF-SITE



KEY PLAN (NOT TO SCALE):



ARCH. SEAL:



MIAMI BEACH
OFFICE OF CAPITAL IMPROVEMENT PROJECTS
1701 MERIDIAN AVENUE, MIAMI BEACH, FL 33139

CITY MANAGER: ALINA T. HUDAK
DIRECTOR: DAVID MARTINEZ, P.E.
PUBLIC WORK DIRECTOR: JOE GOMEZ, P.E.
CITY ENGINEER: CRISTINA ORTEGA CASTINEIRAS, P.E.

5			
4			
3			
2			
1			
NO.	DATE	REVISION	APP'D. BY

BROOKS + SCARPA
1147 NE 7th Ave
Fort Lauderdale, FL 33304

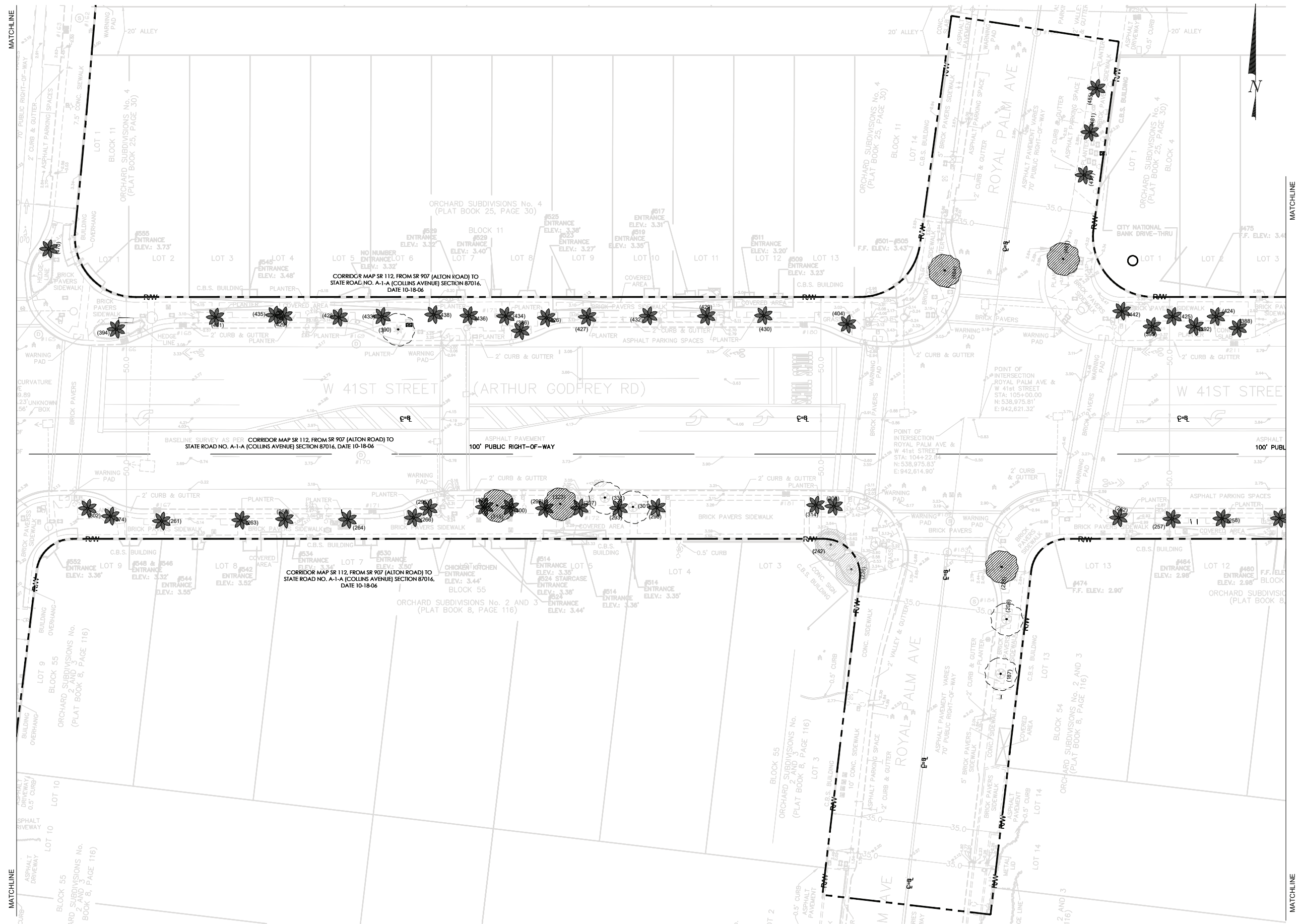
ARCHITECT OF RECORD:
Jeffrey Huber
#AR05514
#LA6667547

ARCHITECT OF RECORD:
DESIGN ARCHITECTXXX
DRAWN BY: XXX
CHECKER: XXX
SCALE: 1"=20'

NEIGHBORHOOD: 41ST ST CORRIDOR REVITALIZATION
TITLE: TREE DISPOSITION PLAN

File Name: 41STCORR - L1-1 - TREE DISPOSITION PLANS.dwg
Survey Reference:
Field Book: N/A Page: N/A Work Order: N/A
Date: 4/17/2023 Sheet: 81 of 124

Drawing: L1-13



NOTES:

TREE DISPOSITION LEGEND

EXISTING TO REMAIN

PALM



TREE



EXISTING TO REMOVE

PALM



TREE



EXISTING OFF-SITE

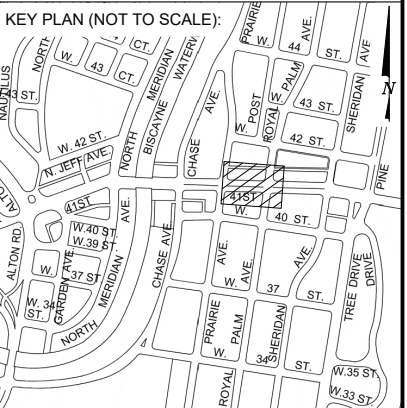
PALM



TREE



KEY PLAN (NOT TO SCALE):



ARCH. SEAL:



OFFICE OF CAPITAL IMPROVEMENT PROJECTS
1701 MERIDIAN AVENUE, MIAMI BEACH, FL 33139

CITY MANAGER: ALINA T. HUDAK
DIRECTOR: DAVID MARTINEZ, P.E.
PUBLIC WORK DIRECTOR: JOE GOMEZ, P.E.
CITY ENGINEER: CRISTINA ORTEGA
CASTINEIRAS, P.E.

5			
4			
3			
2			
1			
NO.	DATE	REVISION	APP'D. BY



BROOKS + SCARPA
1147 NE 7th Ave
Fort Lauderdale, FL 33304

ARCHITECT OF RECORD:

Jeffrey Huber
#AR95514
#LA6667547

ARCHITECT OF RECORD:

DESIGN ARCHITECT: XXX
DRAWN BY: XXX
CHECKER: XXX
SCALE: 1"=20'

NEIGHBORHOOD:

41ST ST CORRIDOR REVITALIZATION

TITLE:

TREE DISPOSITION PLAN

File Name: 41STCORR - L1-1 - TREE DISPOSITION PLANS.dwg

File Name: 415100KR - E1-1 - TREE DIST. OPTION 1 EANS.dwg

Field Book: N/A Page: N/A Work Order: N/A

Date: 4/17/2023 Sheet: 82 of 124

Drawing:

1-14



NOTES:

TREE DISPOSITION LEGEND

EXISTING TO REMAIN

TREE PALM



EXISTING TO REMOVE

TREE PALM

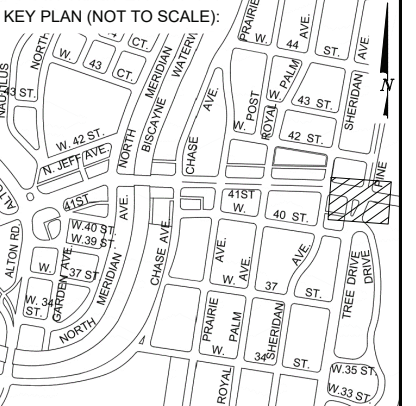


EXISTING OFF-SITE

TREE PALM



KEY PLAN (NOT TO SCALE):



ARCH. SEAL:



OFFICE OF CAPITAL IMPROVEMENT PROJECTS
1701 MERIDIAN AVENUE, MIAMI BEACH, FL 33139

CITY MANAGER: ALINA T. HUDAK
DIRECTOR: DAVID MARTINEZ, P.E.
PUBLIC WORK DIRECTOR: JOE GOMEZ, P.E.
CITY ENGINEER: CRISTINA ORTEGA
CASTINEIRAS, P.E.

5			
4			
3			
2			
1			
NO.	DATE	REVISION	APP'D. BY



BROOKS + SCARPA
1147 NE 7th Ave
Fort Lauderdale, FL 33304

ARCHITECT OF RECORD:

Jeffrey Huber
#AR95514
#LA6667547

ARCHITECT OF RECORD: .

DRAWN BY: XXX

CHECKER: XXX

SCALE: 1"=20'

NEIGHBORHOOD:

41ST ST CORRIDOR REVITALIZATION

TITLE:

TREE DISPOSITION PLAN

File Name: 41STCORR - L1-1 - TREE DISPOSITION PLANS.dwg

Survey Reference:	
-------------------	--

Field Book: N/A Page: N/A Work Order: N/A

Date: 4/17/2023 Sheet: 84 of 124

Drawing:

1-16