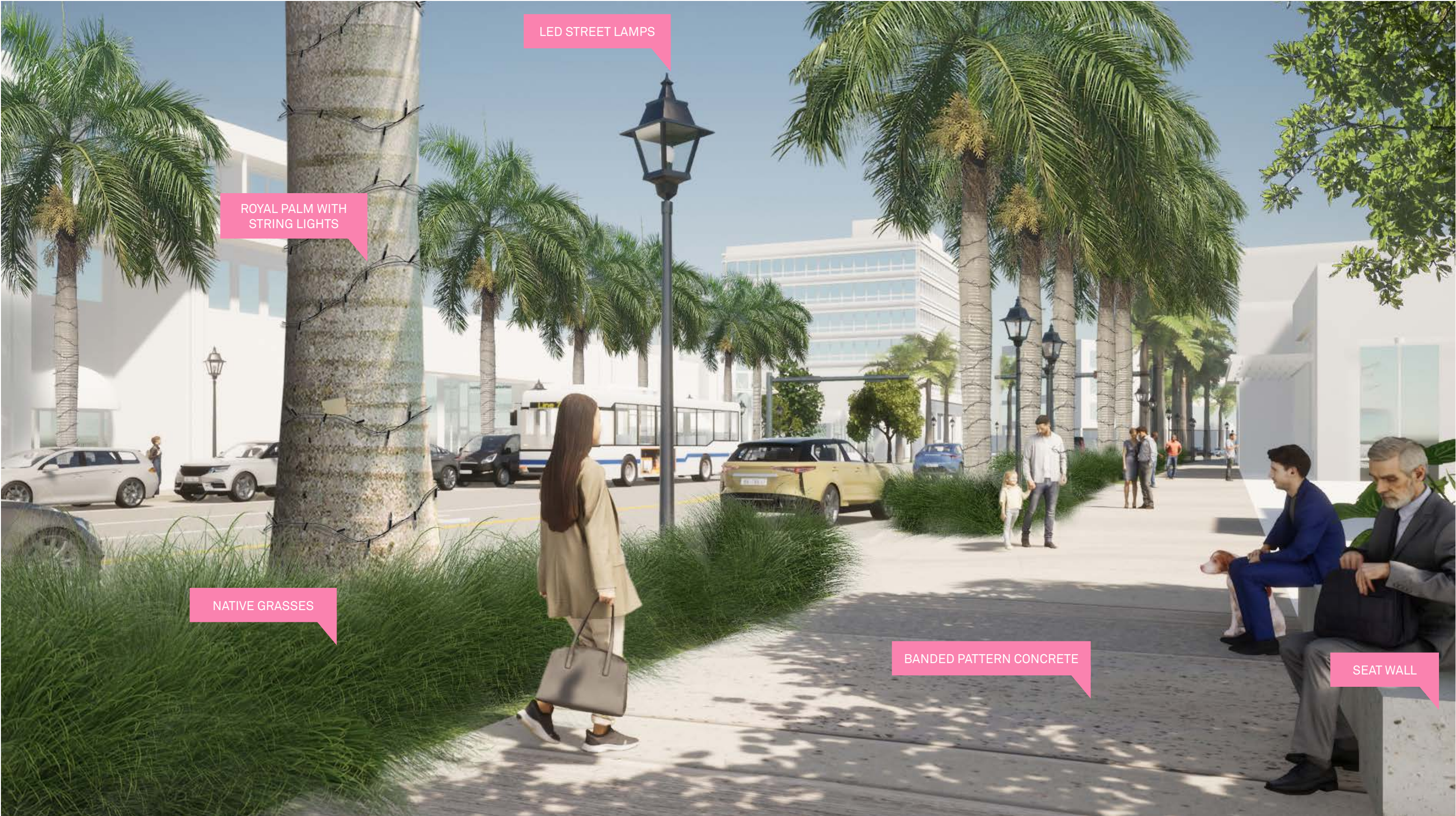




East of intersection between
Garden Ave. and 41 St.





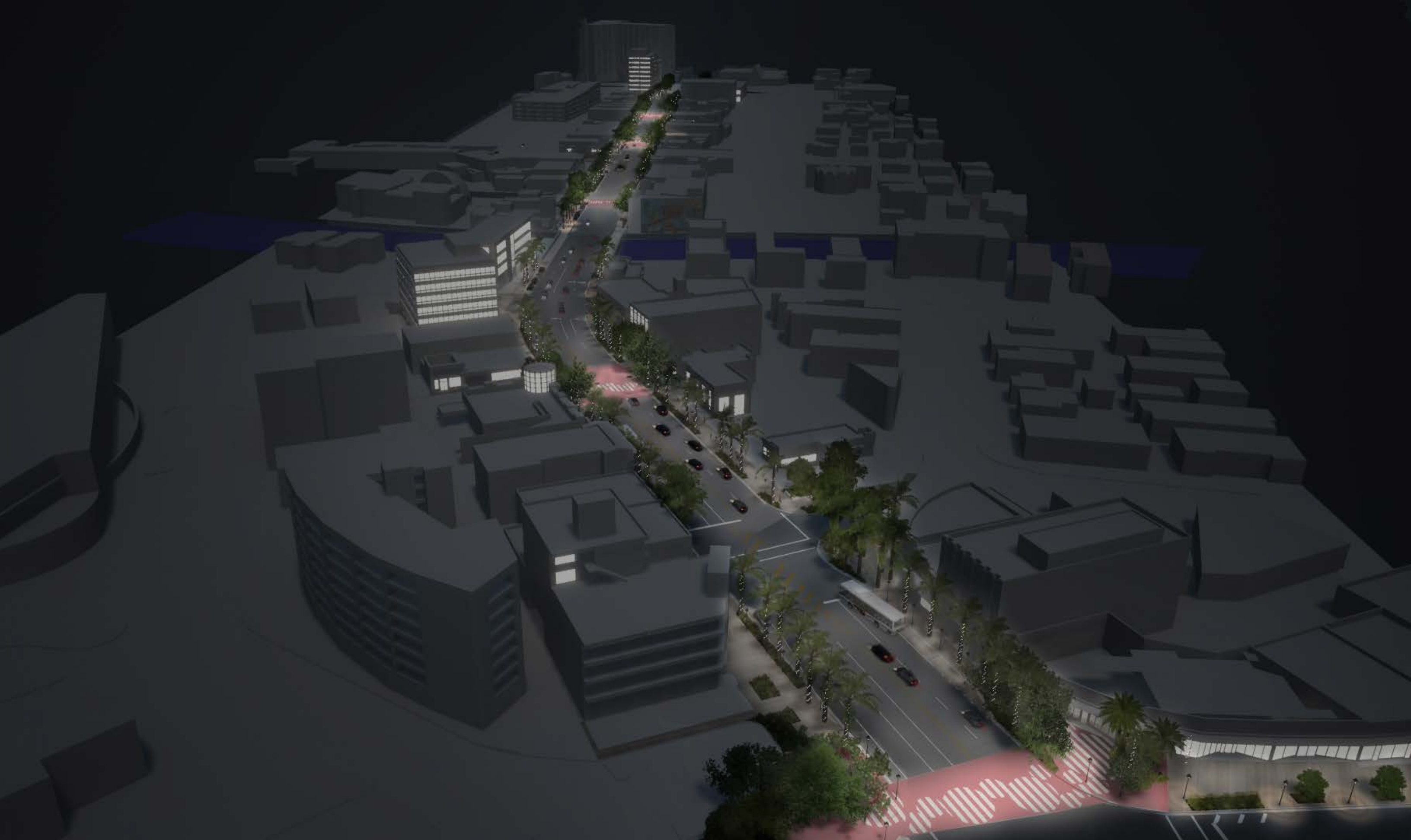


Midblock crossing between Prairie Ave. and Royal Palm Ave.









PROPOSED PUBLIC ART AND GATEWAY FEATURES
ARCHITECTURAL CANOPY

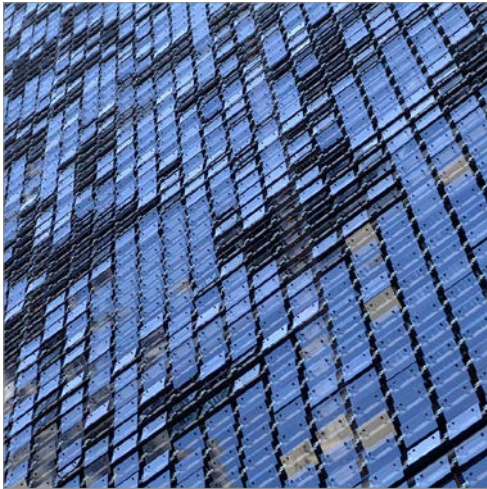
PRECEDENTS



Miami Beach Soundscape
West 8



Miami Design District
Bouroullec Brothers



Firefly - moving wall
Ned Kahn



Gateway Pavilion
Pembroke Pines, FL



CAM Museum of Art
Raleigh, NC



Proposed Gateway Art Feature
bent pipe, metal mesh, marine grade paint



Western Gateway at Alton Road



Eastern Gateway at Henry Liebman Square

PROPOSED PLANTING PALETTE

EXISTING CANOPY



Royal Palm
Roystonea regia




Strangler Fig
Ficus aurea




Green Buttonwood
Conocarpus erectus


LARGE CANOPY




Live Oak
Quercus virginiana




Green Buttonwood
Conocarpus erectus



Gumbo Limbo
Bursera simaruba




Mahogany Tree
Swietenia mahogani




Wild Tamarind
Lysiloma latisiliquum


MEDIUM CANOPY



Silver Buttonwood
Conocarpus erectus




Pigeon Plum
Coccoloba diversifolia




Autograph Tree
Clusia rosea


GROUND COVERS




Wart Fern
Phymatosorus scolopendria




Philodendron 'Burle-Marx'
Philodendron burle-marxii




Monstera
Monstera deliciosa




Dwarf palmetto
Sabal minor




Muhly Grass
Muhlenbergia capillaris




Milkweed
Asclepias syriaca



Spartina Grass
Spartina



Fakahatchee Grass
Tripsacum dactyloides



Perennial Peanut
Arachis glabrata

PROPOSED ROYAL PALM PALETTE

WITH EXPOSED
ROOT BALL



EXISTING



PROPOSED

IF THE ROOT OF AN EXISTING ROYAL PALM ARE RAISED AND/ OR CAUSING ISSUES, THEN A SEAT WALL WILL ENCLOSE THE TREE. FERNS OR SIMILAR RESILIENT PLANT SPECIES CAN INFILL THESE NEW PLANTERS

WITHOUT EXPOSED
ROOT BALL



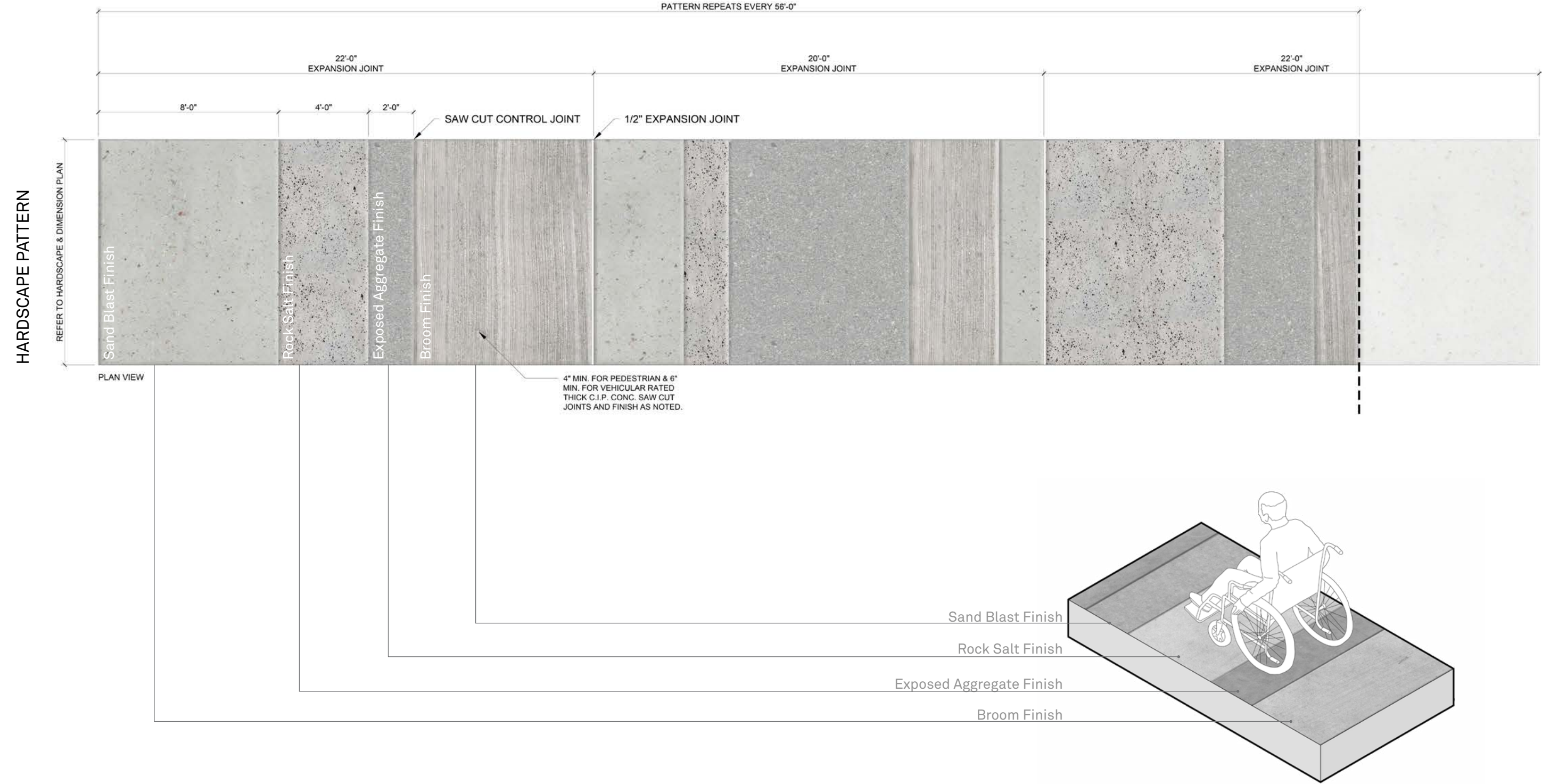
EXISTING



PROPOSED

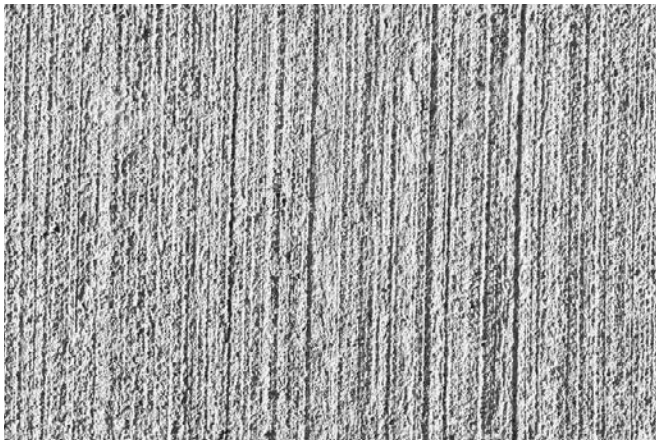
IF THE ROOT OF AN EXISTING ROYAL PALM ARE AT GRADE, THEN METAL GRATING BECOMES THE PRIMARY TOOL TO PROTECT THE TREE AND EXPAND THE WALKS

PROPOSED PAVING | WALKS

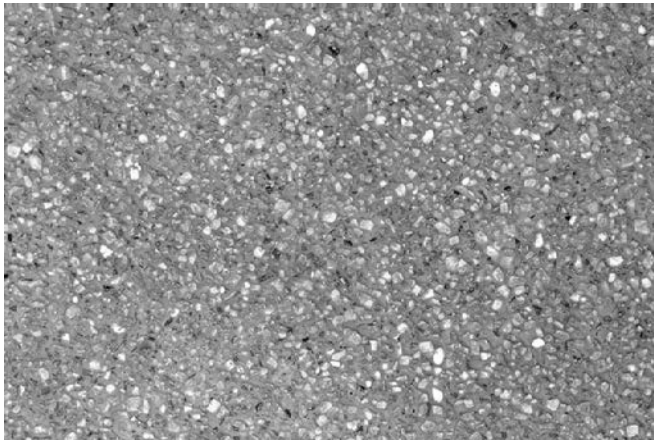


Diverse Textured Concrete Sidewalk

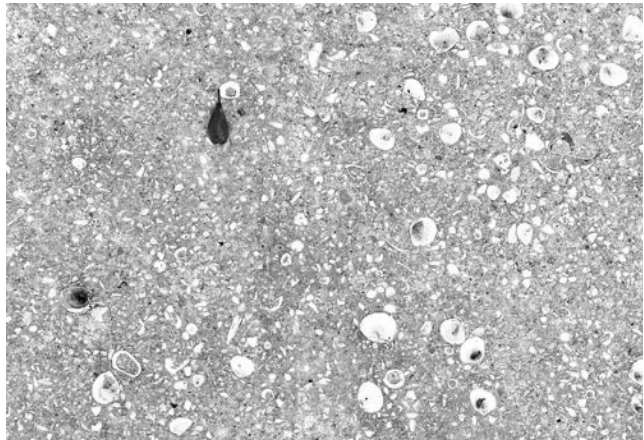
PROPOSED PAVING | WALKS



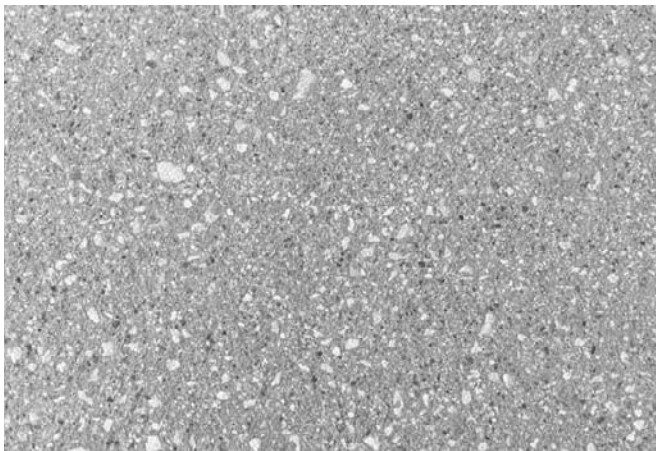
Broom Finish



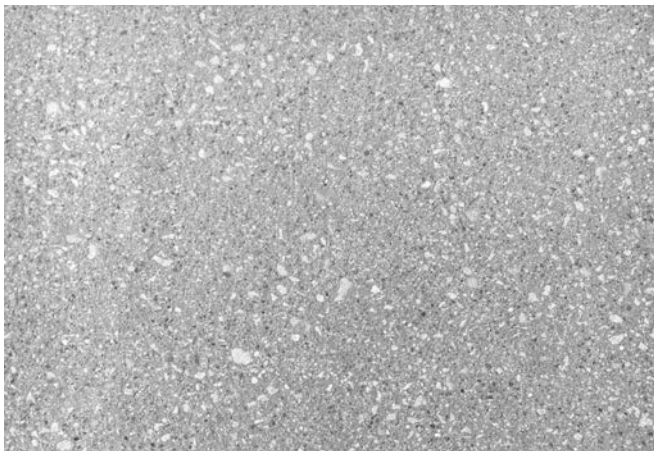
Exposed Aggregate



Seashell Aggregate



Heavy Sandblasted Finish



Light Sandblasted Finish



Towel Finish

PROPOSED FURNITURE PALETTE | WALKS

EXISTING



Bike Rack



Trash Receptacles



Benches

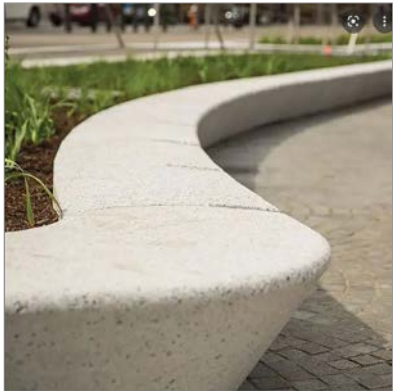


Street Lamp
Type D CMB Public Works

REFINISHED STREET FURNITURE



Landscape Forms
Milenio



Wausau
Seat Walls



A23Y

PRECAST SEAT WALLS

NEW



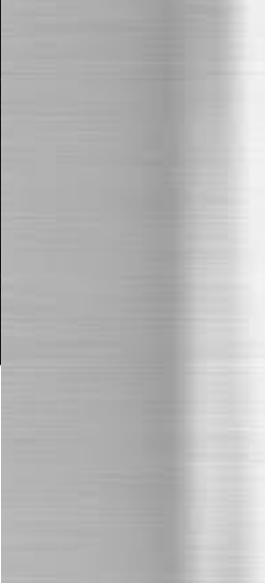
Design by Pininfarina
MIAMI BEACH BUS STOP



Existing



Dark Bronze/Black Gloss Finish



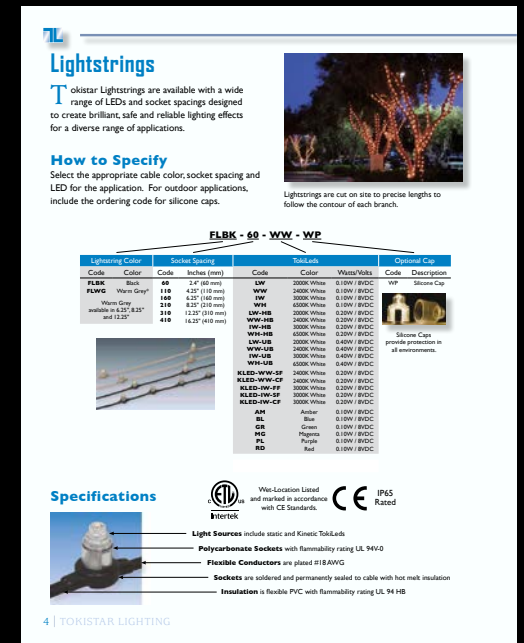
Stainless Steel/
Aluminum Mill Finish

STRING LIGHTS



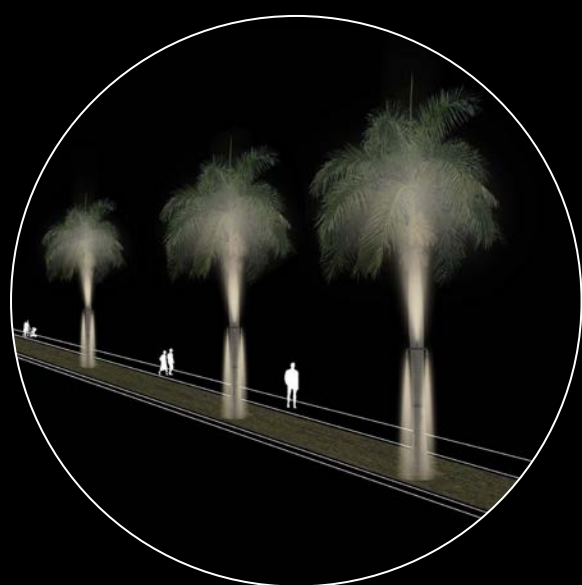
OPTION 1: STRING LIGHTS ON EACH PALM

OPTION 2: STRING LIGHTS ON EVERY OTHER PALM

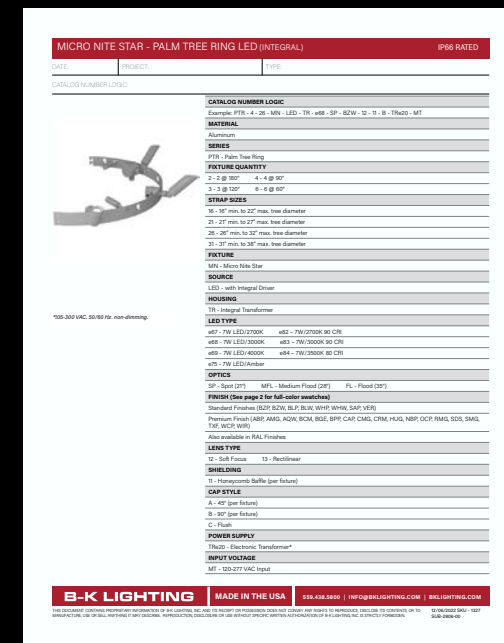


TOKISTAR LIGHTING
LIGHTSTRINGS

ACCENT LIGHTS



OPTION 3: LIGHT RING WITH UPLIGHTS AND DOWNLIGHTS



B-K LIGHTING
PALM TREE RING

PROPOSED STRING LIGHTS EVERY TREE | OPTION 1



PROPOSED STRING LIGHTS EVERY OTHER TREE | OPTION 2

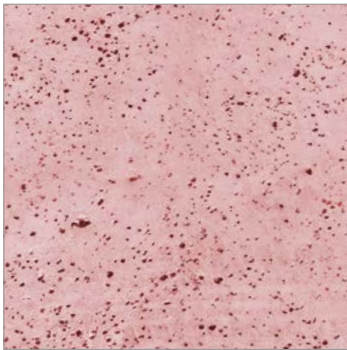


PROPOSED ADJUSTABLE ACCENT LIGHTS | OPTION 3



PROPOSED PAVING | OASES

HARD SCAPE



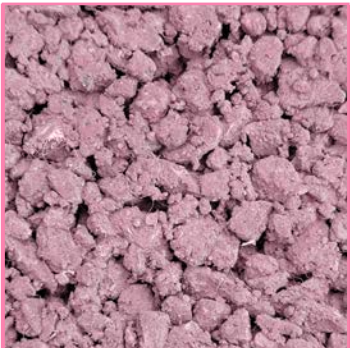
Miami Beach Red Concrete (Rock Salt Finish)



Metal Grates



SUSTAINABLE OPTIONS



Stormcrete



Prefabricated Elements



Cool Pavements

PROPOSED PAVING OPTIONS | OASES



Raspberry RG2846R



Egyptian Red RG2835R



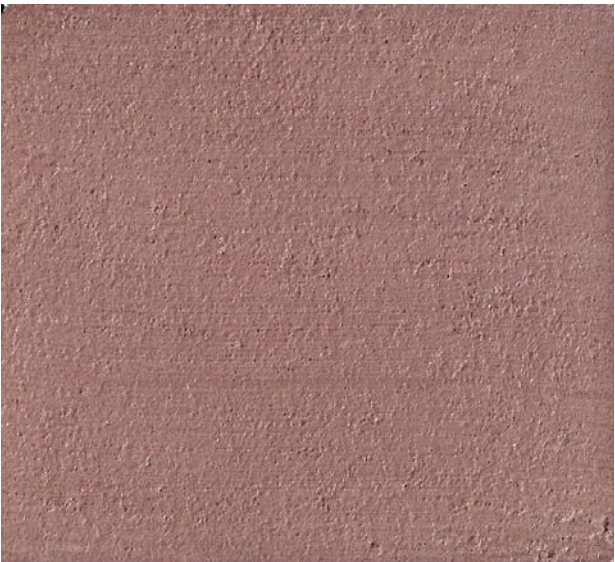
Granite Red 1395



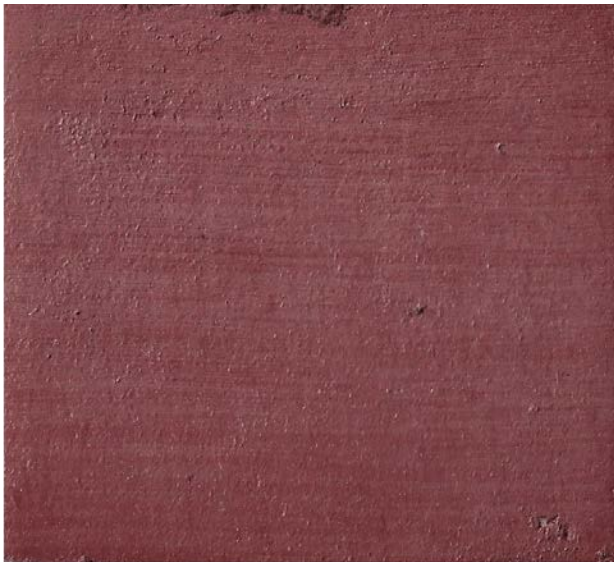
Tile Red 1117



Resin Bonded 1-3mm Red Granite



Miami Beach Red C-1530



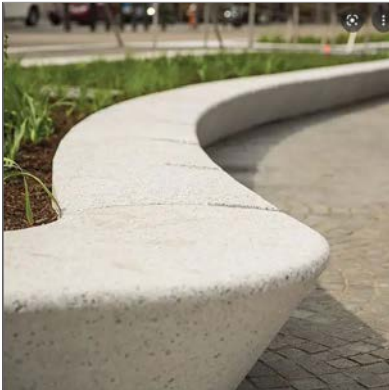
Musky Mulberry C-3450

PROPOSED FURNITURE PALETTE | OASES

SEATING



Landscape Forms
Milenio



Wausau
Seat Walls



Escofet
Fortunat

PIGMENTED SEAT WALL TO MATCH OASIS COLOR



A24Y

FURNITURE



Bike Rack
painted (marine grade)



Trash Receptacles
painted (marine grade)

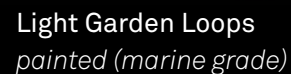
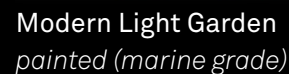


Benches
painted (marine grade)

PAINT FURNITURE TO MATCH OASIS COLOR



Dragon Fruit
Sherwin-Williams
#CC5575



OPTION 1

OPTION 2

OPTION 3

CL620/CL640/CL670 SERIES LumiSTIK 8" COLUMN

MATERIALS

LumiSTIK® column is made of D76 extruded aluminum alloy. All other cast parts are aluminum treated D26 aluminum alloy with a copper D30 content of less than 0.1%.

LED boards are contained in a white UV stabilized high impact acrylic sealed enclosure. The enclosure is made of 1/2" (12.7mm) thick clear polycarbonate. LumiSTIK columns are available in three standard acrylic lengths. Other lengths are available on request.

ELECTRICAL

Standard driver is 0-10V dimming mode (dim to 100%) with 0-10V/100mA constant voltage (0-10Vdc) dimming temperature range of 0-40°C (104°F to 104°F). The LumiSTIK column is designed for protection, inhibit over current protection and output short circuit protection with automatic shutdown and restart delay of 30 seconds (RSC) compliant.

LED

2700K/3000K/4000K/5000K CCT with 80-90 CRI, optional RGBW; 120lm/W

See LUMINIS.com for more information on LEDNA TPA 21 Test Method and LM-80 data.

FINISH

Final preparation process includes priming of cast aluminum parts for an anodized. Polyester powder coating is applied through an electrocoat process. The coating is suitable for long term finish.

CERTIFICATION

Certified and Approved as per CSA C22.2 No. 250.3 standard and IEC60598-1-2008 standard for use in locations listed below. Photometric testing performed by an independent laboratory in accordance with IES LM-79-08 standard at 25°C. Lumen degradation in accordance with IESNA LM80 standard.

MOUNTING

The LumiSTIK column is designed for ease of access and installation. See page 3 for mounting details.

LUMINIS | Toll Free 866.586.4647 Fax: 514.655.8572 Email: info@luminis.com
2810 Lakeshore, Pointe-Claire (QC) Canada H3R 5L5

Luminis may be altered by design improvement or discontinued without prior notice.

LUMINIS.COM

2022 Rev. 0

CITY ELEMENTS

Illuminating Top Module - AR890

hess

DESCRIPTION

City Elements 180 offers design professionals the flexibility of a multi-purpose lighting system in a single architectural structure. It may be configured with a single top element for area lighting and may include up to two additional lighting modules directly below for accenting or highlighting of facades, landscaping, or entryway. Column may be specified with heights up to twenty feet. A comparison chart is also available. Housing styles for the top element may be with 360° lens with a choice of symmetrical or asymmetrical reflectors or an asymmetrical housing for house side-cleaving. Luminaires housing and extruded aluminum shaft with flush handles are finished in fully textured paint. All hardware is stainless steel.

PROTECTED BY
PRIMA®

Date _____ Type _____ Catalog Number _____

Project Name _____

ORDERING INFORMATION

PRODUCT					
MODEL	CCT	DISTRIBUTION		VOLT	FINISH (Prima®)
CERAMABOULIC LUMIN. DEVICE	WW 4000K	T2	12	UNV/ 120 VAC	SS
		T3	18		Dark Gray
		T4	24		GG
WW 4000K		T3	18		Dark Gray
		T4	24		GG
		T5	30		GG
		Type V			Matte Black
					DR
					Dark Bronze
					CC (Non-Prima)
					Custom Matte Color

EXPRESS
DELIVERY

www.hessamericas.com or for other European & Israeli companies, please visit www.expertsonline.com

In a standard product line, the first two word product provides the name, the right to change, without loss, time, materials or materials. Technical specification sheets that appear on www.hessamericas.com are the most recent ones available.

1/3

Rev. 02/2006.20

Typography Ring Light

Spec Sheet | C0700

Housing & Materials

Cast aluminum construction. Flexible LED light engine is clamped into the housing, housing with aluminum engineered axle. Housing features a sput aluminum glass with pin-coated reflector. All hardware is magnesium steel.

Electrical

Surge protected 120V through 277V 50/60Hz electronic driver, 0-120V dimming, -40°C start temperature. Cast aluminum driver housing assembly mounted at top of pipe. Available with optional ANSI C136-41 twist lock receptacle or WatlowPro FSP-2100 photoelectron sensor.

Light Engine

Fully automated flexible linear LED fixture delivers dimmable direct and indirect lighting in conjunction with the glass white metal reflector. A RPHI compliant circuit board is included. Available in 2700K, 3000K, 3500K, and 4000K. -60 CRI across all available color temperatures.

Distribution

TV

Warranty

All Landscaping Forms products are warranted for six years.

Certification

UL Listed in the US Location, CE, International Data Site Approved, Bay Area/California, RoHS Compliant

Designed by Designworks, a BMW Group company

[Click here](#) for product information related to this product.

The Typings Collection, designed and engineered in collaboration with BMW Designworks, opens a new realm of possibility in the way the urban landscape is experienced. Intelligent, systemic engineering components assist architecture in meaningful and practical ways - defining and connecting spaces, and intuitively guiding the movement of visitors in and among them. Typings ring light is stunning, seamlessly blending its lighting recognized identity from almost a mile away. Perched atop an aluminum mast, a circular strip of LEDs create a solid ring of ambient light that, when viewed from underneath, is like a looking glass to the city.

Photoelectron sensor

Twist lock receptacle

[Click here](#) to view the technical data sheet for the photoelectron sensor

Wagco, White (marine) and driver housing
EPL 1,640"

TM21 1707310 60,000hrs

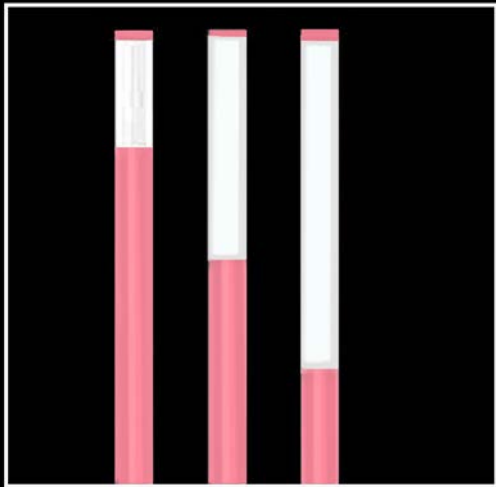
Protection Class IP67

1

Revised: January 11, 2022 | Landscaping Forms Inc. | 800.521.2548 | P.205.3813455 | 7800 E. Michigan Ave., Kalamazoo, MI 49008

LIGHTING OPTION 1

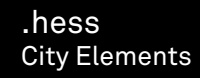
LIGHT PALETTE



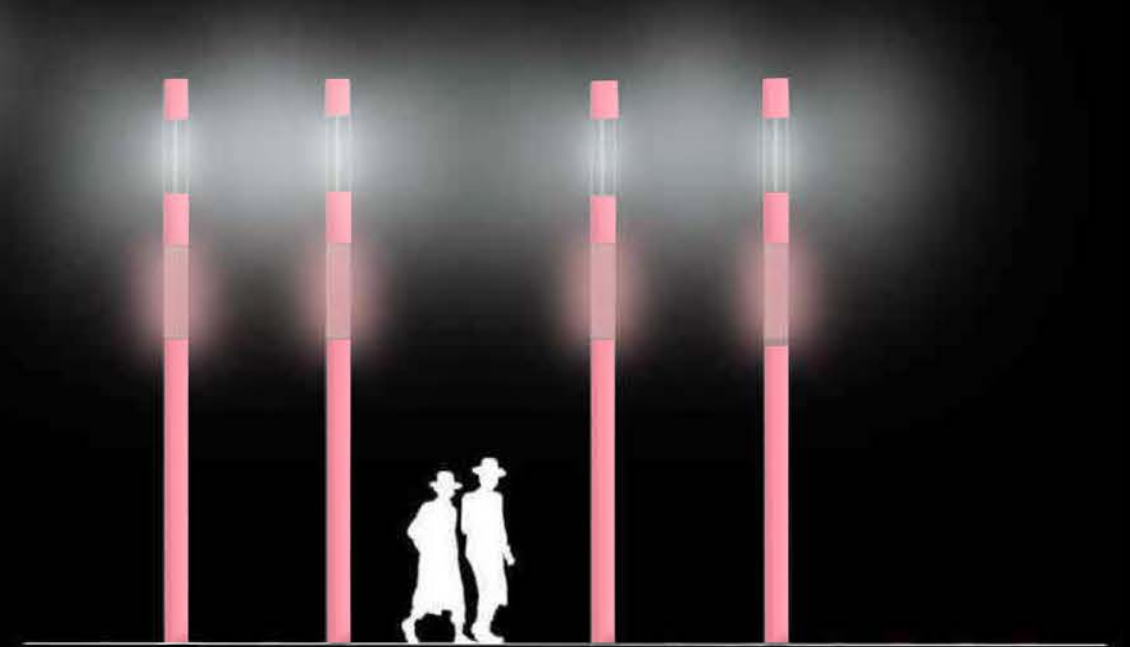
Modern Light Garden
painted (marine grade)



LIGHT PALETTE



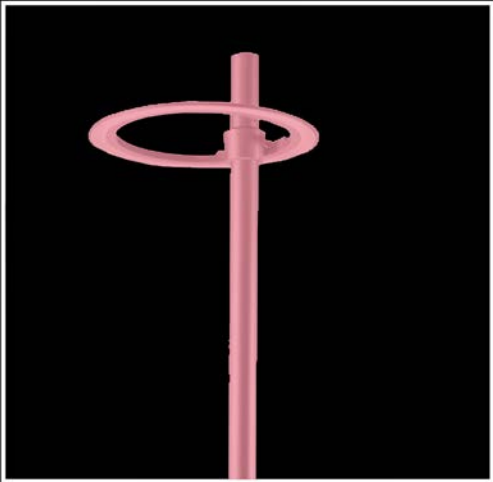
LIGHT GARDENS





LIGHTING OPTION 3


LIGHT PALETTE



Light Garden Loops
painted (marine grade)

Typology Ring Light

Spec Sheet | CQ100



The Typology Collection, designed and engineered in collaboration with BSW Designworks, opens a new realm of possibility in the way the urban landscape is experienced. Intelligent, systemic engineering complements existing architecture to reorganize and practice space, defining and connecting spaces, and intuitively guiding the movement of visitors in and among them. Typology's ring light is a soaring, seamlessly levitating light fixture recognized instantly from around a mile away. Perched atop an aluminum mast, a circular strip of LEDs creates a solid ring of ambient light that, when viewed from underneath, is like a looking glass to the sky.

Housing & Materials

Cast aluminum construction. Flexible LED light engine is clamped into fixture housing with aluminum segmented pins. Housing features a spin aluminum glass white powdercoat reflector. All hardware is anodized-coated steel.

Electrical

Single pin/mast: 120V through 277V 50/60Hz electronic driver, 8-100 dimming, -40°C start temperature. Cast aluminum driver housing assembly located at top of pole. Available with optional 4000-2200-411 fixed lock receptacle or Watlowtype PDP-0110 photocell sensor.

Light Engine

Fully enclosed flexible linear LED fixture delivers downward direct and indirect lighting in conjunction with the glass white metal reflector. A North-south oriented linear light is included. Available in 2700K, 3000K, 3500K, and 4000K, 100 CRI across all available color temperatures.

Distribution

TV

Warranty

LED light products are warranted for six years.


Certification

UL Listed for Wet Locations, CE, International Dark Sky Approved, RoHS Compliant, REACH Compliant, RoHS Compliant

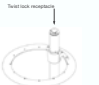
Designed by Designworks, a BSW Group company

[Click here](#) for patent information related to this product.

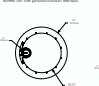
Production detail




Final lock assembly



Click here to view the technical data sheet for the photocell sensor.



Click here to view the technical data sheet for the photocell sensor.



Weight: 180lb (luminaire and driver housing)
85W, 1.6kW

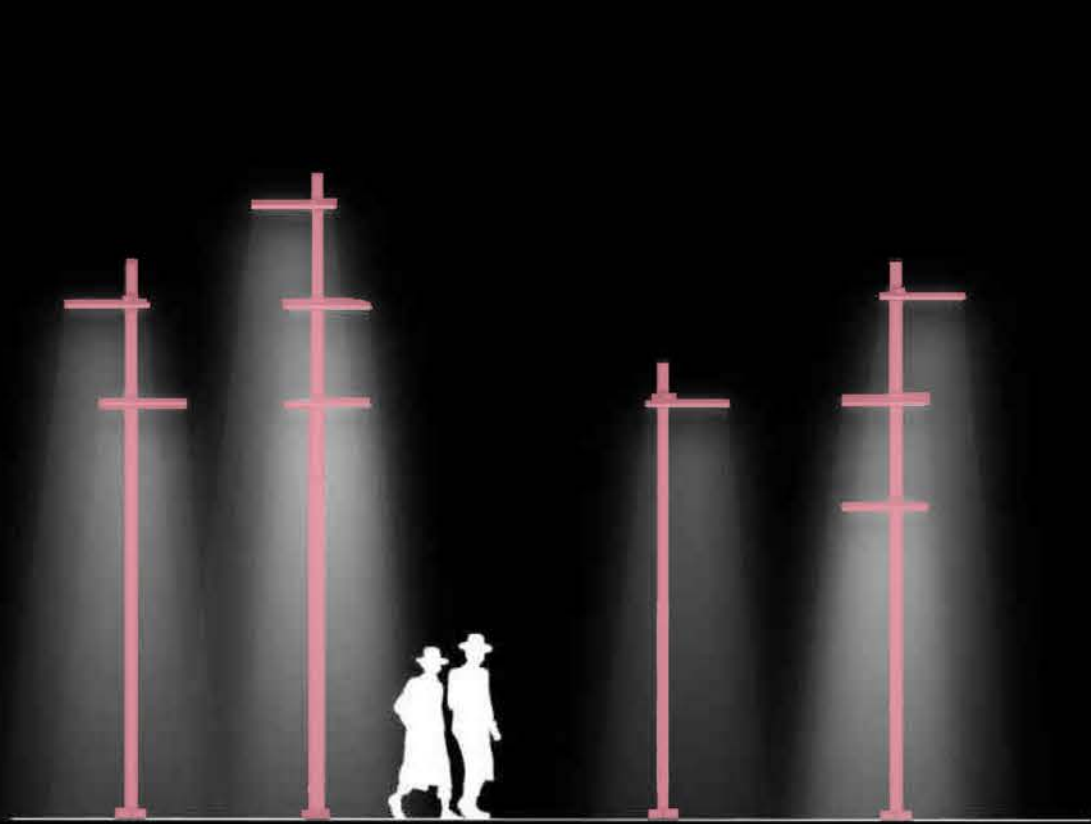
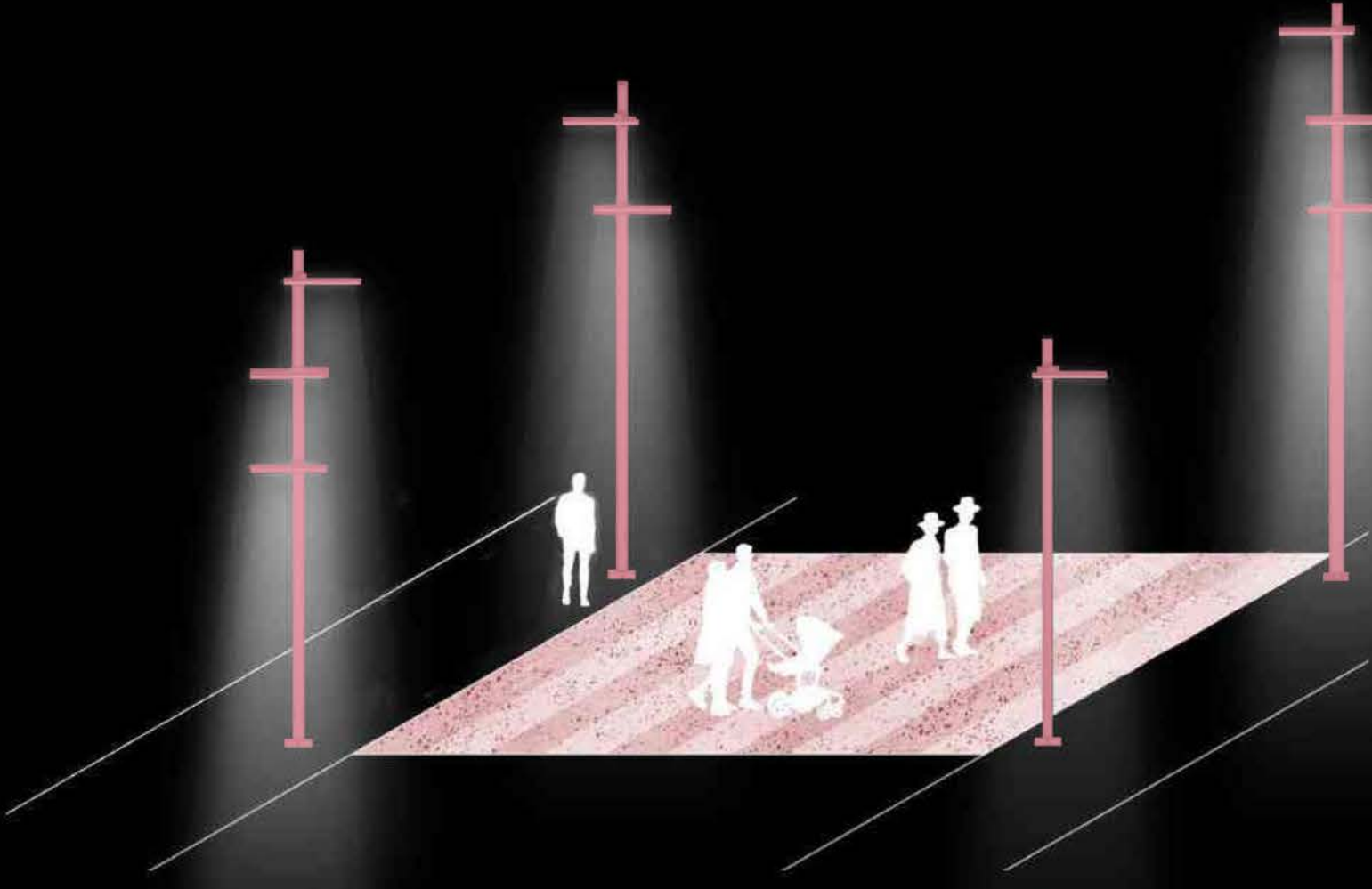
TM01 L7000 60,000hrs
Protection Class: IP67

1

Revised January 11, 2022 | Landscape Forms Inc. | 800.221.2540 | P 200.381.5400 | 7601 E. Maitland Ave., Kalamazoo, MI 49008

Landscapeforms
Typology Ring Light

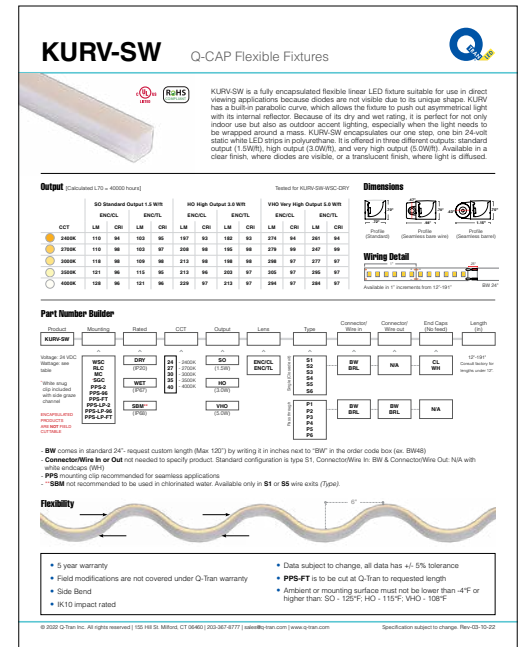
LIGHT GARDENS







TREE CANOPY UPLIGHTING



SEAT WALL LIGHTING