

## Erin Santiago

Arborist FL-5705A | LIAF Inspector #2018-0214

The Santiago Group LLC

[thesantiagogroupllc@gmail.com](mailto:thesantiagogroupllc@gmail.com)

(954) 947-1087

June 9, 2021

### ISA Certified Arborist Report

The following is an arborist report for the project located at 6440 Allison Road in Miami Beach, Florida. The purpose of this report is to inventory and evaluate the trees on site.

This report is not a risk assessment on a Level 1, 2 or 3 as described by the Levels and Scope of Tree Risk Assessment from the ANSI A300 Part 9: Tree, shrub, and Other Woody Plant Management – Standard Practices. The Santiago Group LLC cannot be held liable for damage to the tree or damage caused by the tree.

### Methods:

An on-site visual inspection at ground level was made on May 28 and June 2, 2021 to observe the trees. The size of each tree was measured as diameter at breast height (DBH), breast height being 4.5 feet above ground utilizing diameter measure tape. Canopy spread diameters were determined utilizing a distance measuring wheel where possible. Tree heights were estimated in feet. Some DBH measurements were estimated when access to the tree or tree parts could not be obtained. This report describes all trees on site that will be affected by this project and includes pictures and protection specifications. Refer to the Tree Disposition Plan for proposed actions.

The condition rating of each tree is described as Good, Moderate, or Poor. Please refer to ANSI A300 (Part 5)-2012: Management - Annex A-2 for an explanation of non-numeric condition ratings used herein.

### Appendixes:

Please see Appendix A for Tree Locations, Appendix B for Tree Inventory and Condition, Appendix C for Photographs, and Appendix D for Tree Protection Specifications.

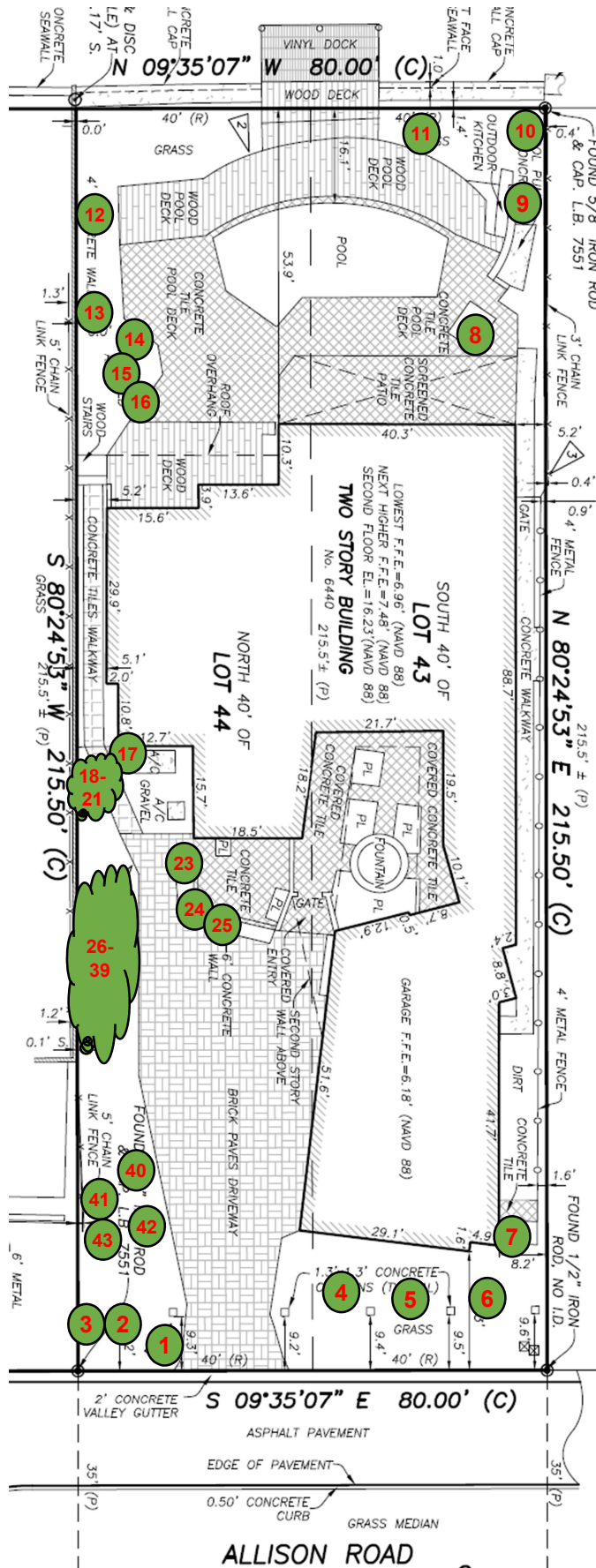
Respectfully submitted,



Erin Santiago

ISA Certified Arborist FL-5705A | LIAF Inspector #2018-0214

## Appendix A: Tree Locations



Note: Not to Scale •  
 Tree locations  
 approximate • Tree  
 Disposition Plan  
 locations take  
 precedence

## Appendix B: Tree Inventory and Condition

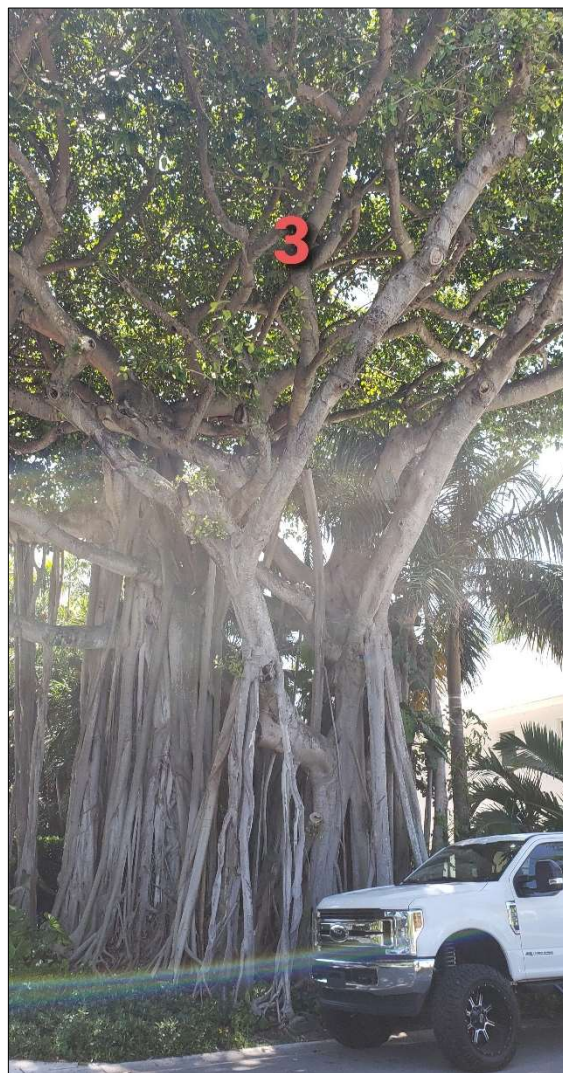
Tree #	Common Name <i>Botanical Name</i>	DBH (inches)	Height (feet)	SPR (feet)	Condition	ANSI TPZ Factor	ANSI TPZ Radius (feet)	Notes
1	Spindle Palm (triple) <i>Hyophorbe verschafeltii</i>	30	8CT 110A	11	Good	6	15	
2	Royal Palm <i>Roystonea regia</i>	15	18CT 260A	20	Moderate	6	8	Nutrient deficient
3	Ficus Benghalensis <i>Ficus benghalensis</i>	15ft	40	80	Moderate	10	N/A	Neighbor's tree has grown into subject property; mediocre wound response with cavity development; TPZ not indicative of real life circumstances; protect to dripline; tree will likely sustain construction impact as long as key structural roots are maintained; DBH is an estimate due to lack of access
4	Pandanus <i>Pandanus spp</i>	6	24	17	Good	10	5	
5	Pandanus <i>Pandanus spp</i>	7	25	15	Good	10	6	
6	Pandanus <i>Pandanus spp</i>	7	15	12	Poor	10	6	Significant browning; monitor
7	Japanese Fern Tree <i>Filicium decipiens</i>	10	18	10	Poor	10	8	Severe codominance; dieback
8	Solitaire Palm (triple) <i>Ptychosperma elegans</i>	8	18CT 230A	14	Good	6	4	
9	Adonidia Palm (multi) <i>Veitchia merrillii</i>	15	20CT 240A	14	Good	6	8	
10	Adonidia Palm (multi) <i>Veitchia merrillii</i>	12	20CT 240A	12	Good	6	6	
11	Coconut Palm <i>Cocos nucifera</i>	11	15CT 260A	21	Good	6	6	Normal; mild wind impact and nutrient deficiency
12	Spindle Palm (double) <i>Hyophorbe verschafeltii</i>	30	10CT 160A	8	Good	6	15	
13	Spindle Palm (double) <i>Hyophorbe verschafeltii</i>	10	10CT 160A	8	Good	6	5	
14	Montgomery Palm (multi) <i>Veitchia arecina</i>	15	21CT 280A	14	Good	6	8	
15	Paurotis Palm <i>Acoelorrhaphe wrightii</i>	15	23CT 250A	17	Good	6	8	
16	Montgomery Palm (multi) <i>Veitchia arecina</i>	15	21CT 280A	14	Good	6	8	
17	Adonidia Palm <i>Veitchia merrillii</i>	6	23CT 270A	14	Moderate	6	3	Close proximity to gutter
18	Adonidia Palm <i>Veitchia merrillii</i>	6	23CT 270A	14	Good	6	3	Crown is over neighbor's property
19	Adonidia Palm (double) <i>Veitchia merrillii</i>	11	26CT 310A	17	Good	6	6	
20	Montgomery Palm (multi) <i>Veitchia arecina</i>	11	26CT 310A	17	Good	6	6	
21	Adonidia Palm (double) <i>Veitchia merrillii</i>	11	26CT 310A	17	Good	6	6	
22	Japanese Fern Tree <i>Filicium decipiens</i>	9	27	20	Poor	10	8	Severe codominance; structure impacted by competition
23	Adonidia Palm <i>Veitchia merrillii</i>	6	23CT 270A	14	Good	6	3	
24	Japanese Fern Tree <i>Filicium decipiens</i>	3	21	9	Moderate	10	3	Structure impacted by competition
25	Japanese Fern Tree <i>Filicium decipiens</i>	6	20	17	Moderate	10	5	Codominance in lower half
26	Adonidia Palm (triple) <i>Veitchia merrillii</i>	14	25CT 300A	21	Good	6	7	

## Appendix B: Tree Inventory and Condition

Tree #	Common Name <i>Botanical Name</i>	DBH (inches)	Height (feet)	SPR (feet)	Condition	ANSI TPZ Factor	ANSI TPZ Radius (feet)	Notes
27	Adonidia Palm (double) <i>Veitchia merrillii</i>	7	22CT 26OA	8	Good	6	4	Bulge at 3' off grade
28	Adonidia Palm (triple) <i>Veitchia merrillii</i>	13	25CT 30OA	17	Good	6	7	
29	Adonidia Palm (triple) <i>Veitchia merrillii</i>	12	25CT 30OA	16	Good	6	6	
30	Adonidia Palm (triple) <i>Veitchia merrillii</i>	13	25CT 30OA	18	Good	6	7	
31	Adonidia Palm (triple) <i>Veitchia merrillii</i>	13	25CT 30OA	18	Good	6	7	
32	Adonidia Palm (double) <i>Veitchia merrillii</i>	9	25CT 30OA	14	Good	6	5	
33	Adonidia Palm (triple) <i>Veitchia merrillii</i>	11	25CT 30OA	16	Good	6	6	
34	Adonidia Palm (triple) <i>Veitchia merrillii</i>	14	25CT 30OA	17	Good	6	7	
35	Adonidia Palm (triple) <i>Veitchia merrillii</i>	16	25CT 30OA	20	Good	6	8	
36	Adonidia Palm (triple) <i>Veitchia merrillii</i>	17	25CT 30OA	20	Good	6	9	
37	Adonidia Palm (triple) <i>Veitchia merrillii</i>	17	25CT 30OA	17	Good	6	9	
38	Adonidia Palm <i>Veitchia merrillii</i>	6	18CT 24OA	9	Good	6	3	
39	Adonidia Palm (triple) <i>Veitchia merrillii</i>	11	19CT 22OA	11	Good	6	6	
40	Adonidia Palm (double) <i>Veitchia merrillii</i>	5	15CT 20OA	9	Good	6	3	
41	Chinese Fan Palm (double) <i>Livistona chinensis</i>	12	17CT 23OA	14	Good	6	6	
42	Chinese Fan Palm <i>Livistona chinensis</i>	8	17CT 23OA	12	Good	6	4	
43	Chinese Fan Palm (double) <i>Livistona chinensis</i>							Juvenile



## Appendix C: Photographs



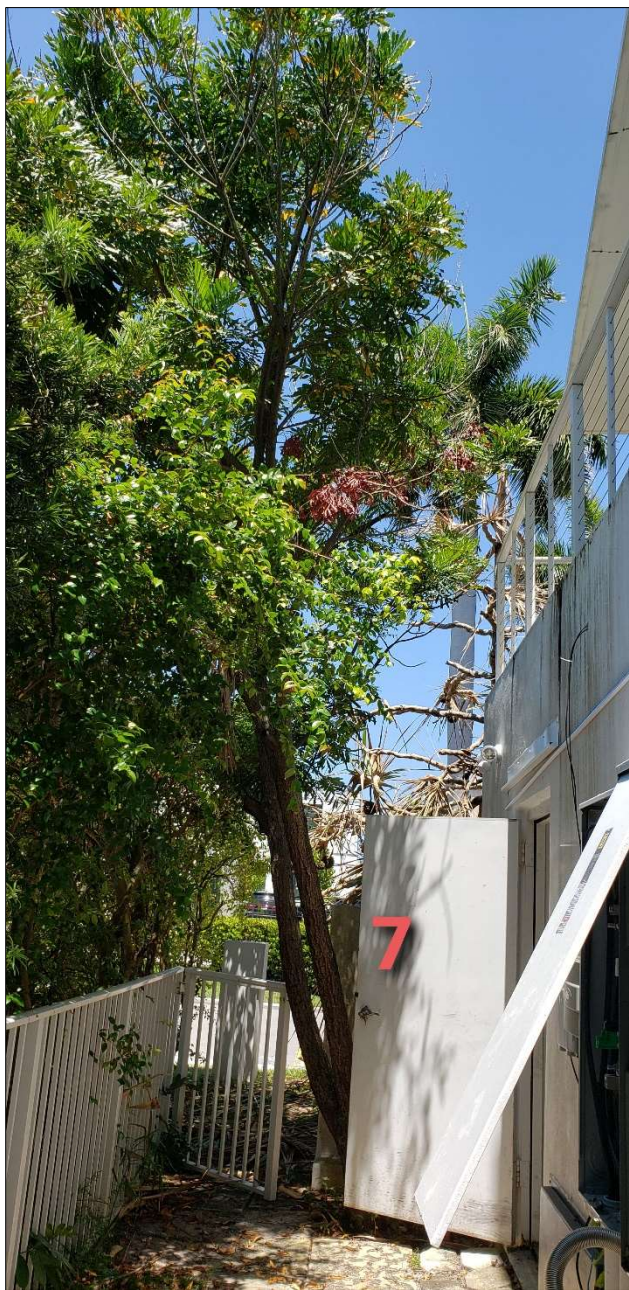


## Appendix C: Photographs



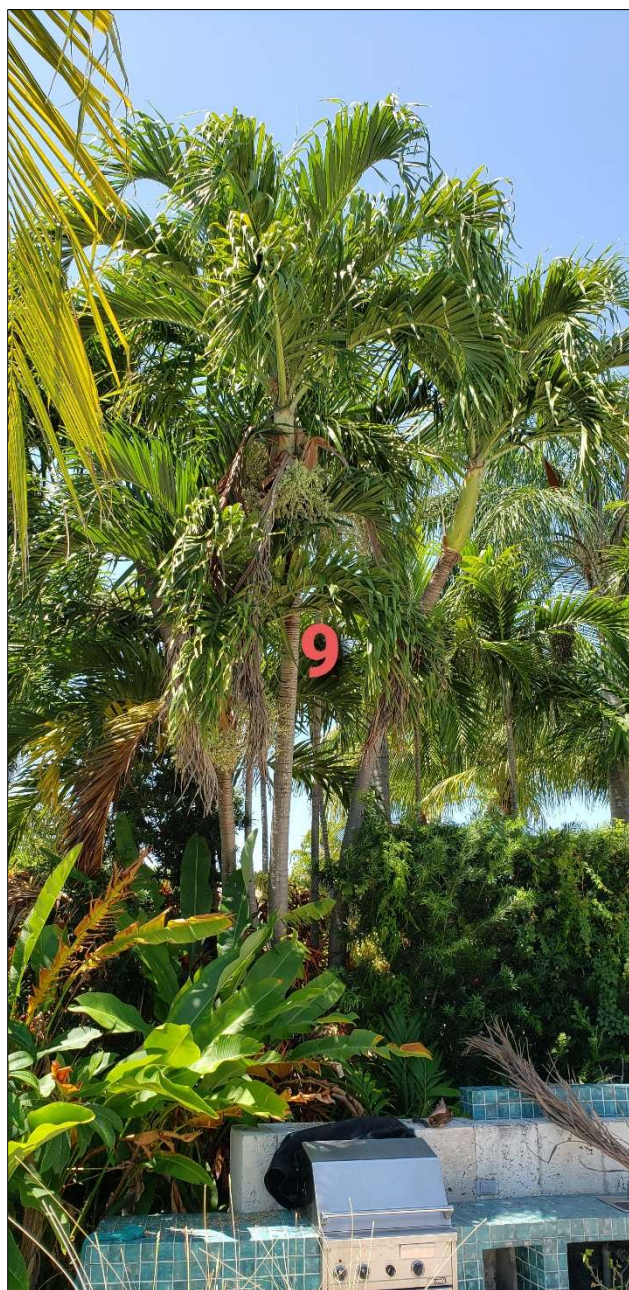


## Appendix C: Photographs





## Appendix C: Photographs





## Appendix C: Photographs





## Appendix C: Photographs





## Appendix C: Photographs





## Appendix C: Photographs

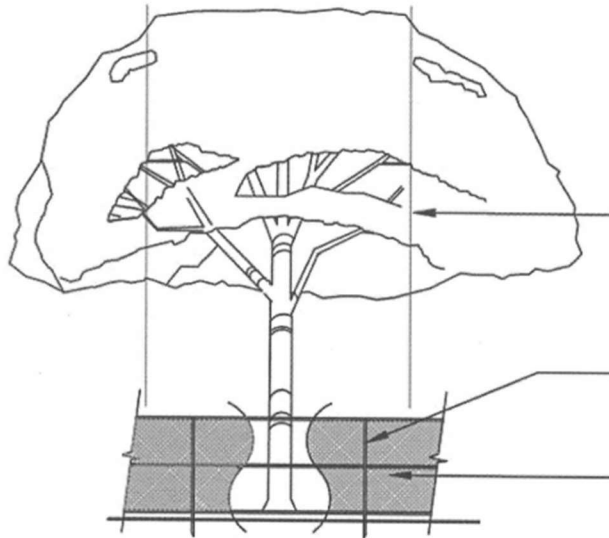




## Appendix D: Tree Protection Detail

TREE / PALM PROTECTION FENCES SHALL BE CONSTRUCTED PRIOR TO ANY CONSTRUCTION ACTIVITY INCLUDING GRUBBING FOR ALL TREES / PALMS THAT ARE 'TO REMAIN, BE PROTECTED, or BE RELOCATED'

NO ACTIVITY OR DISTURBANCE SHOULD OCCUR WITHIN THE FENCED AREAS, INCLUDING VEHICLE USE, STORAGE OF MATERIALS, DUMPING OF LIQUIDS OR MATERIALS, GRADE CHANGES, GRUBBING, AND MECHANICAL TRENCHING FOR IRRIGATION, ELECTRICAL, LIGHTING, ETC.



In no case shall the fence be installed less than ten feet from the trunk

Tree + Palm protection barriers to extend beyond the 'dripline' or to the 'critical root zone area' of all trees/palms to be protected. Extend where necessary to protect tree canopy roots

Barriers shall be a minimum of four feet high, and shall be constructed of continuous chain link fence with metal posts at eight-foot spacing, or of two-by-four-inch posts with three equally spaced two-by-four-inch rails. Posts may be shifted to avoid roots.

### PROTECTION DETAIL NOTE

CONTRACTOR TO INSTALL 'TREE / PALM PROTECTION FENCE BARRIERS' AROUND ALL EXISTING TREES OR PALMS AT THE START OF THE PROJECT. BARRIERS TO REMAIN IN PLACE THROUGHOUT THE DURATION OF THE PROJECT AND SHOULD NOT BE REMOVED OR DROPPED FOR ANY REASON WITHOUT AUTHORIZATION FROM THE CITY OF MIAMI BEACH URBAN FORESTER + PLANNING + ZONING DEPARTMENT

## **C.M.B. TREE / PALM PROTEC. DETAIL**