

9/16/2022 2:57:39 PM c:_proj-22\002231.00 1920 Alton Road Miami Beach\Electrical\002231.00 EL-101_LEVEL 01.dwg Wed 01-Mar-2023 01:23PM gspulpis

LIGHTING FIXTURE SCHEDULE

TYPE	MANUFACTURER/DESCRIPTION	VOLTAGE	LAMPS	LOCATION	REMARKS
D1	RECESSED ROUND DOWNLIGHT ALPHABET LM-79 NU4-RD-20LM-40K-90-D40-UNV-DIM10-NC-MC-MC	120/277	LED	AS SHOWN	1,2
ST1	POLE TOP LIGHT FIXTURE BECA MODEL #77142	277	LED	AS SHOWN	1,2

NOTES:

1. FIXTURES SHALL BE UL OR ETL LISTED.
2. MOUNTING HARDWARE SUCH AS HANGERS, BRACKETS, RAILS, YOKES, STEMS, CHAINS, ETC., SHALL BE PROVIDED AS NECESSARY TO MOUNT SPECIFIED FIXTURE.

ELECTRICAL KEYNOTES

1 LIGHTING SHALL BE POWERED VIA THE BUILDING EMERGENCY LIGHTING CONTROL PANEL.

The image shows two product specification sheets from ALPHABET. The left sheet is for the 'NU4 Round Downlight', detailing its COB LED technology, lumen output, and mounting options. The right sheet is for the 'BECA Pole Top Light Fixture', showing its technical specifications, including height, luminaire type, and mounting details. Both sheets include detailed descriptions, dimensions, and electrical requirements.

This technical drawing shows a pole top luminaire with a symmetrical light distribution. It includes a detailed description of the luminaire's construction, materials, and mounting hardware. The drawing also includes a list of specifications such as luminaire type, height, and mounting details. A small photograph of the luminaire is included for reference.

1920 Alton Rd. Miami Beach, FL 33139

Gensler

MAIN OFFICE
45 Fremont Street, Suite 1500
San Francisco, CA 94105
United States
Tel 415.433.3700
Fax 415.836.4599

SATELLITE OFFICE
545 N.W. 26th Street, Suite 250
Miami, FL 33127
United States
Tel 305.350.7070
Fax 305.350.7071

BILZIN SUMBERG
Land Use
1450 Brickell Avenue, 23rd Floor
Miami, FL 33131
Tel 305.350.2355

KIMLEY HORN
Civil, Landscape, Traffic
8201 Peters Road, Suite 2200
Plantation, FL 33324
Tel 954.535.5144

THORNTON THOMASETTI
Structure
80 SW 8th Street, Suite 2160
Miami, FL 33130
Tel 954.990.0556

CES ENGINEERING
MEPPF
2937 W. Cypress Creek Rd, Suite 102
Fort Lauderdale, FL 33309
Tel 954.990.0556

Date	Description
02/07/2023	DRB REVISION
04/04/2023	DRB REVISION

Seal / Signature

NOT FOR CONSTRUCTION

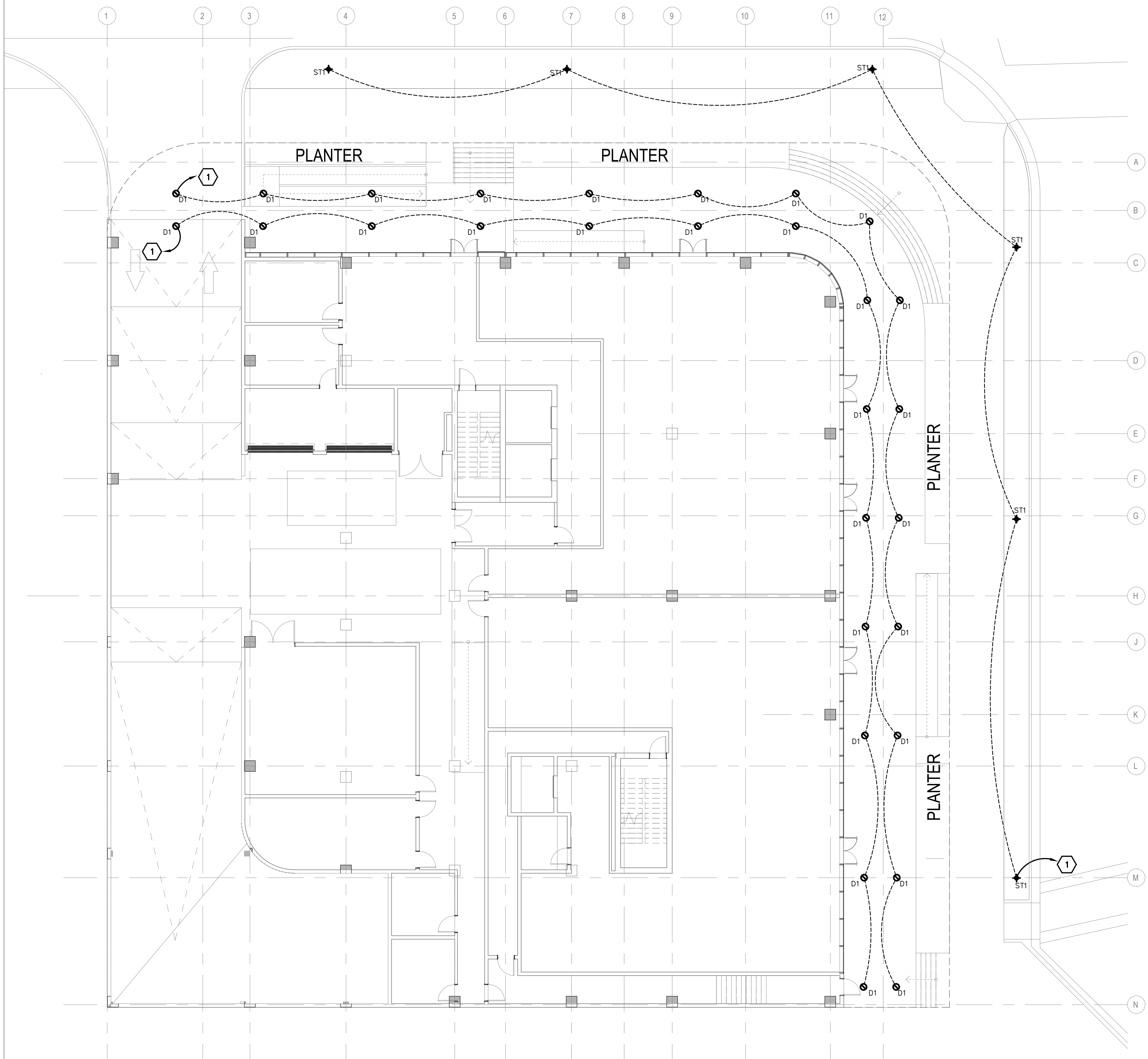
Project Name
1920 Alton Road

Project Number
79.0666.000

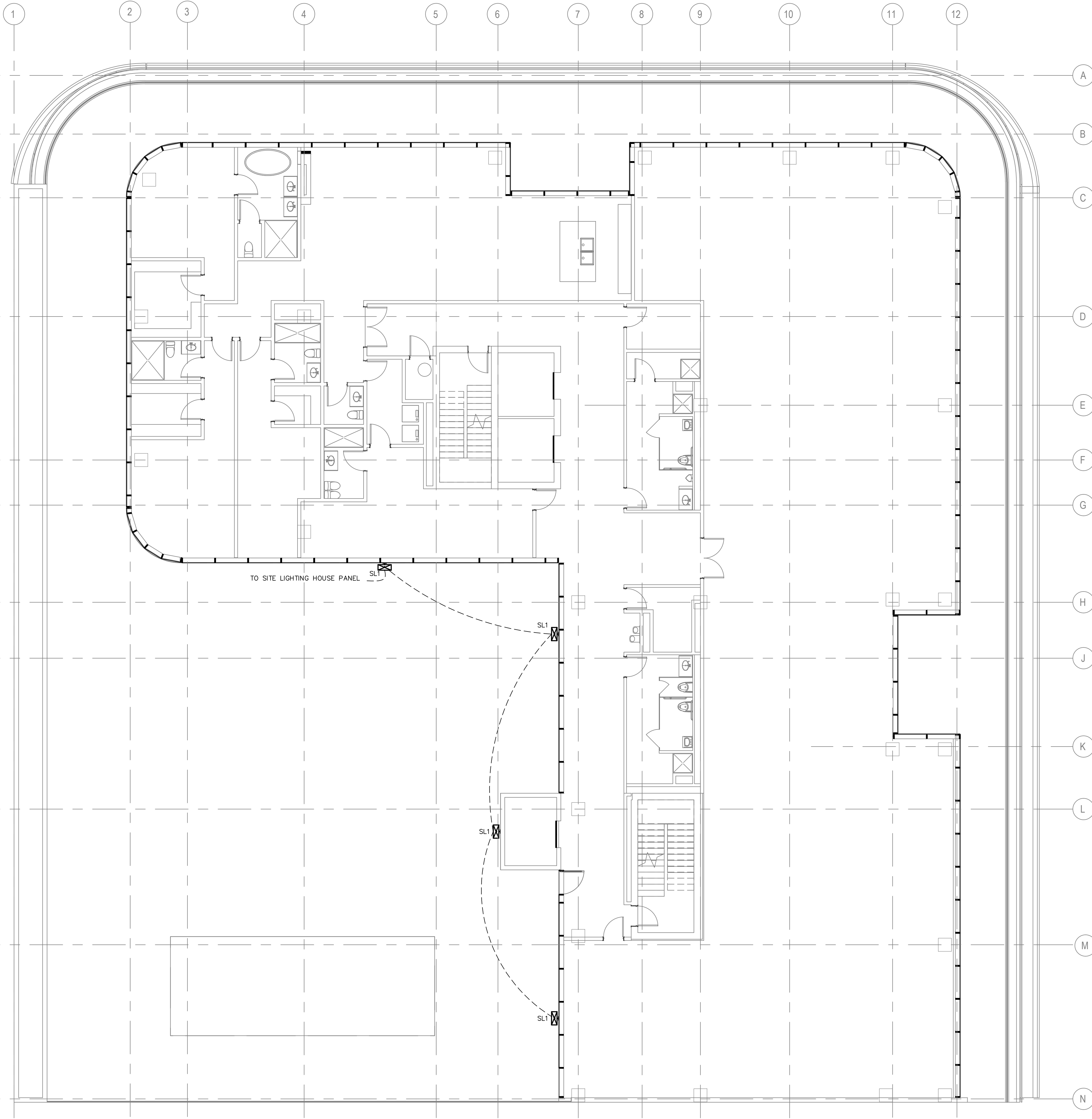
Description
LIGHTING PLAN - LEVEL 01

Scale
3/32" = 1'-0"

EL-101



1 LIGHTING PLAN - LEVEL 01
SCALE: 3/32"=1'-0"



1 LIGHTING PLAN - LEVEL 03
SCALE: 3/32" = 1'-0"

LIGHTING FIXTURE SCHEDULE					
TYPE	MANUFACTURER/DESCRIPTION	VOLTAGE	LAMPS	LOCATION	REMARKS
SL1	LED WALL MOUNTED LUMINAIRE DARK BRONZE FINISH	277	---	AS SHOWN	1,2

NOTES:

- FIXTURES SHALL BE UL OR ETL LISTED.
- MOUNTING HARDWARE SUCH AS HANGERS, BRACKETS, RAILS, YOKES, STEMS, CHAINS, ETC., SHALL BE PROVIDED AS NECESSARY TO MOUNT SPECIFIED FIXTURE.

D-Series Size 1 LED Wall Luminaire

Back Box (BBW, E20WC)

Watts: 15-24W Weight: 1.2 lbs
Depth: 2.5" Height: 6.5"

Watts: 15-24W Weight: 1.2 lbs
Depth: 2.5" Height: 6.5"

Specifications

Introduction

The D-Series Wall Luminaire is a light, fully integrated LED solution for building mount applications. It features a sleek, modern design and is carefully engineered to provide long-lasting, energy-efficient lighting with a variety of optical and control options for customized performance. With an expected service life of over 20 years of nighttime use and up to 74% in energy savings over comparable 20W metal halide luminaires, the D-Series Wall is a reliable, low-maintenance lighting solution that produces sites that are exceptionally illuminated.

Ordering Information

Order #	Qty	Material	Configuration	Finish	Notes	Lead Time
000100	10	0001	0001	0001	0001	0001

Performance Data

Lumen Output

Temp	15W	18W	21W	24W
27°C	1500	1800	2100	2400

Electrical Load

Temp	15W	18W	21W	24W
27°C	0.07	0.08	0.09	0.10

Options and Accessories

- 01. Back box
- 02. Mounting hardware
- 03. Diffuser
- 04. Sensor
- 05. Dimmer

Features & Specifications

PHOTOMETRIC DIAGRAMS

1920 Alton Rd. Miami Beach, FL 33139

Genster

MAIN OFFICE Tel 415.433.3700
45 Fremont Street, Suite 1500 Fax 415.836.4599
San Francisco, CA 94105 United States

SATELLITE OFFICE Tel 305.350.7070
545 N.W. 26th Street, Suite 250 Fax 305.350.7071
Miami, FL 33127 United States

BILZIN SUMBERG
Land Use
1450 Brickell Avenue, 23rd Floor
Miami, FL 33131
Tel 305.350.2355

KIMLEY HORN
Civil, Landscape, Traffic
8201 Peters Road, Suite 2200
Plantation, FL 33324
Tel 954.535.5144

THORNTON THOMASETTI
Structure
80 SW 8th Street, Suite 2160
Miami, FL 33130
Tel 954.990.0556

CES ENGINEERING
MEPPF
2937 W. Cypress Creek Rd, Suite 102
Fort Lauderdale, FL 33309
Tel 954.990.0556

Date	Description
02/07/2023	DRB REVISION
04/04/2023	DRB REVISION

Seal / Signature

NOT FOR CONSTRUCTION

Project Name
1920 Alton Road

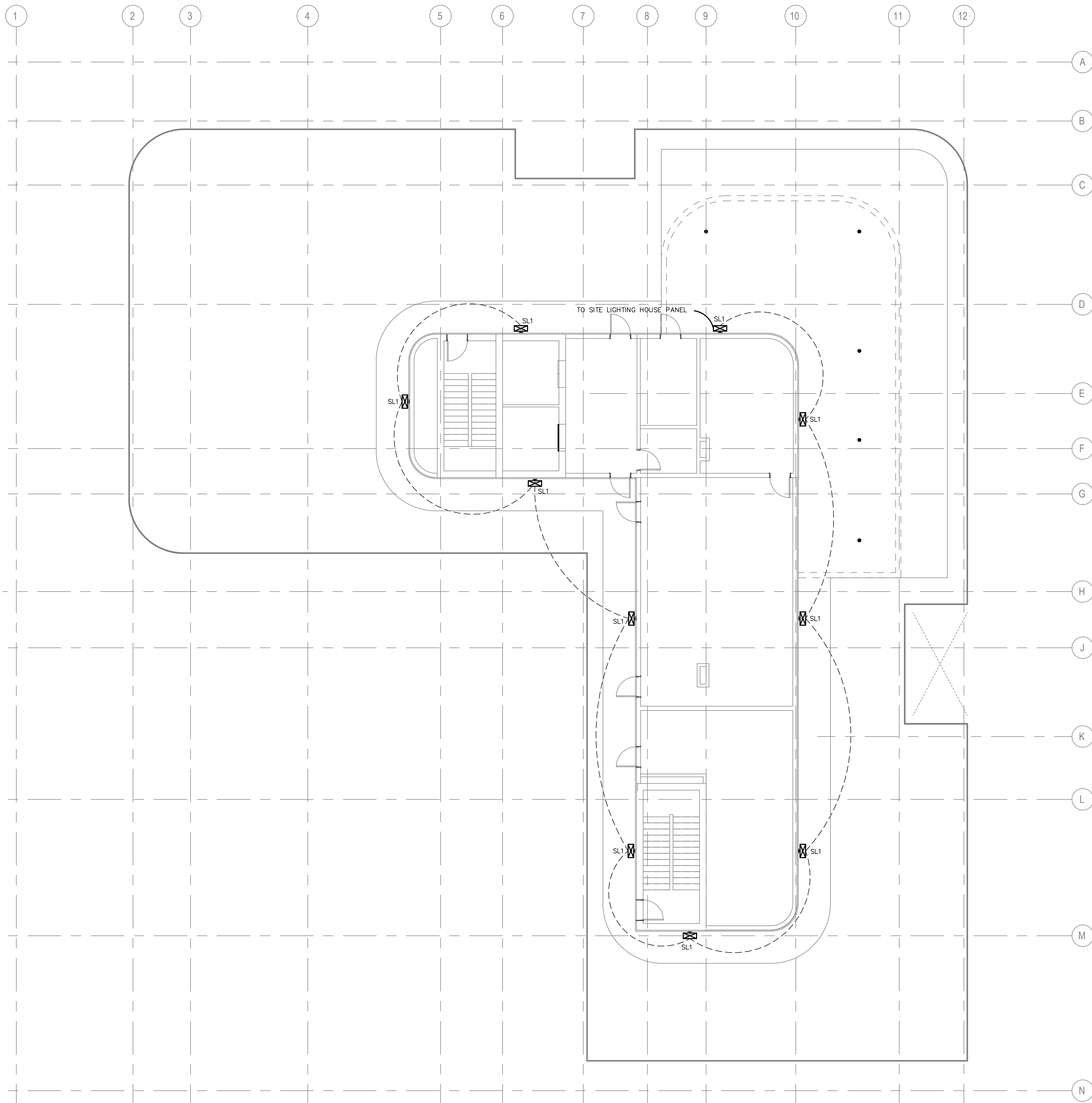
Project Number
79.0666.000

Description
LIGHTING PLAN - LEVEL 03

Scale
1/8" = 1'-0"

EL-103

9/16/2022 2:57:39 PM G:_Proj-22\20222313.00 1920 Alton Road Miami Beach\Electrical\20222313.00 EL-106_LEVEL 06.dwg Wed 01-Mar-2023 01:23PM gdsuab



1 LIGHTING PLAN - LEVEL 06
 SCALE: 3/32" = 1'-0"

1920 Alton Rd. Miami Beach, FL 33139

Gensler

MAIN OFFICE Tel 415.433.3700
 45 Fremont Street, Suite 1500 Fax 415.836.4599
 San Francisco, CA 94105
 United States

SATELLITE OFFICE Tel 305.350.7070
 545 N.W. 26th Street, Suite 250 Fax 305.350.7071
 Miami, FL 33127
 United States

BILZIN SUMBERG
 Land Use
 1450 Brickell Avenue, 23rd Floor
 Miami, FL 33131
 Tel 305.350.2355

KIMLEY HORN
 Civil, Landscape, Traffic
 8201 Peters Road, Suite 2200
 Plantation, FL 33324
 Tel 954.535.5144

THORNTON THOMASETTI
 Structure
 80 SW 8th Street, Suite 2160
 Miami, FL 33130
 Tel 954.990.0556

CES ENGINEERING
 MEPPF
 2937 W. Cypress Creek Rd, Suite 102
 Fort Lauderdale, FL 33309
 Tel 954.990.0556

△ Date	Description
1 02/07/2023	DRB REVISION
2 04/04/2023	DRB REVISION

Seal / Signature

**NOT FOR
 CONSTRUCTION**

Project Name
 1920 Alton Road

Project Number
 79.0666.000

Description
 LIGHTING PLAN - LEVEL 06

Scale
 1/8" = 1'-0"

EL-106