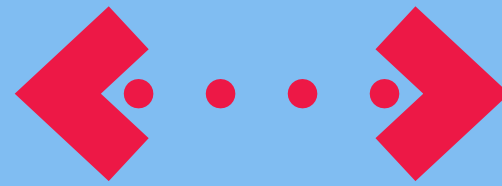


ESPAÑOLA
WAY



OCEAN
DRIVE

SOUTH BEACH PROMENADE
Community Meeting



Calvin, Giordano & Associates, Inc.
A SAFEbuilt[®] COMPANY

Completed Tasks

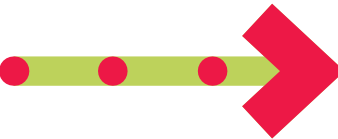
- Project coordination with Fire, Public Works, Parking, CIP, and Planning.
- Project scope analyzed and reduced to defer design planning for Drexel Ave. until a solution to parking needs are found.
- Traffic counts and data were collected
- Traffic Study was submitted to the County
- Received direction from FERC to use the allocated budget to focus on Tactical Urbanism component for:
 - Española Way from Pennsylvania Ave east to Drexel Ave
 - Española Way from Washington Avenue east to Collins Ave
 - 14th Place from Ocean Court east to Ocean Drive

Española Way | Tactical Urbanism



PHASES OF PROJECT DEVELOPMENT

TACTICAL URBANISM PILOT PROJECTS

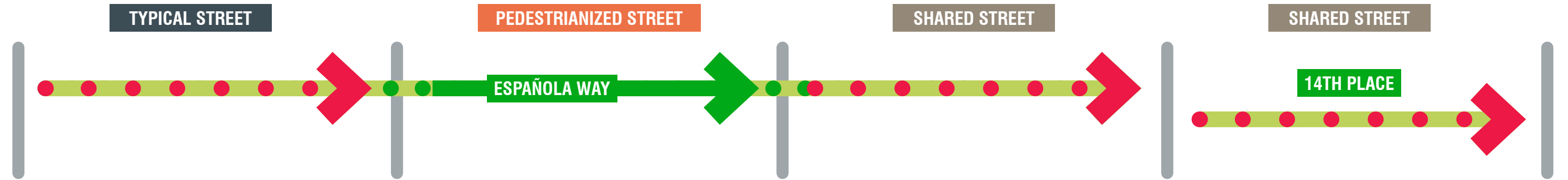


PERMANENT IMPROVEMENTS

- 1**
Española Way West
(Pennsylvania to Drexel Ave)
- 2**
Española Way West
(Washington to Collins Ave)
- 3**
14th Place
(Collins to Ocean Drive)

- 4**
FEASIBILITY PLANNING
ROADWAY DESIGN & ENGINEERING
(INCLUDES: ROADWAY DESIGN, PARKING SOLUTIONS, SIGNAGE, LANDSCAPING, FURNISHINGS, AIPP, PLAZA DE ESPAÑA REDESIGN, MARQUEES, & LIGHTING)

PROJECT FOCUS

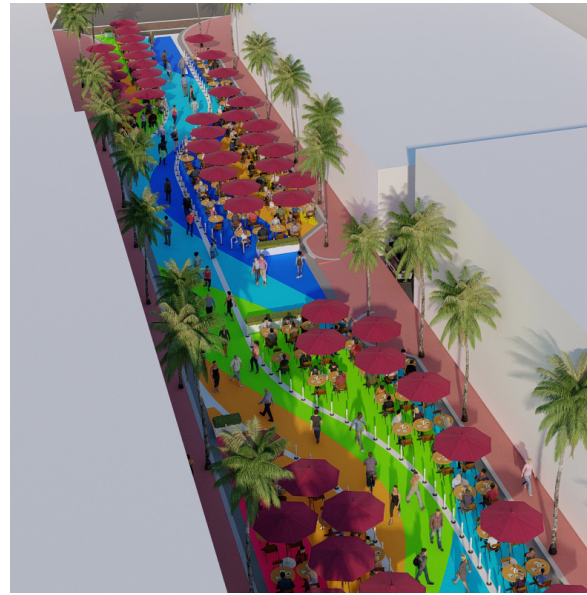


PENNSYLVANIA AVE

DREXEL AVE



WASHINGTON AVE



COLLINS AVE



OCEAN DR

Pennsylvania to Drexel

Stamped asphalt to match general paving pattern of pedestrianized segment of Española Way

Drexel to Washington

Constructed, Pedestrianized segment of Española Way

Washington to Collins

Tactical Urbanism project with painted asphalt and creation of usable social space within the re-purposed travel lanes.

Collins to Ocean Dr

Tactical Urbanism project with painted asphalt



Calvin, Giordano & Associates, Inc.
A SAFEbuilt COMPANY

ESPAÑOLA WAY 'WEST'



Calvin, Giordano & Associates, Inc.
A SAFEbuilt COMPANY



Española Way 'West' Between Drexel and Pennsylvania Ave



Española Way 'West' Between Drexel and Pennsylvania Ave



Calvin, Giordano & Associates, Inc.
A SAFEbuilt COMPANY

CITY OF MIAMI BEACH

UPDATE PRESENTATION

COMMUNITY OUTREACH MEETING

MARCH 7, 2023

WHAT IS BEING INSTALLED IN THIS FIRST PHASE

02 MODULE

7

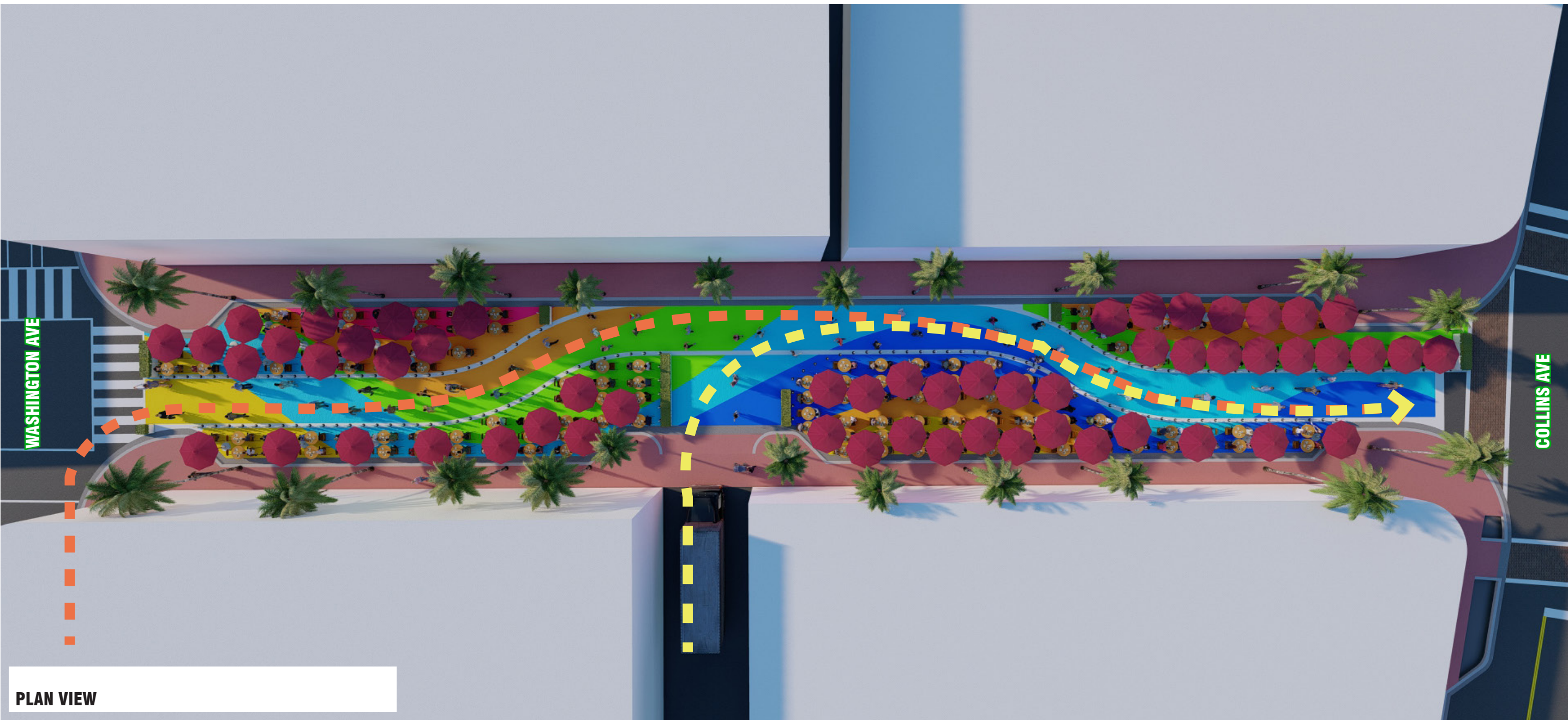
ESPAÑOLA WAY 'EAST'



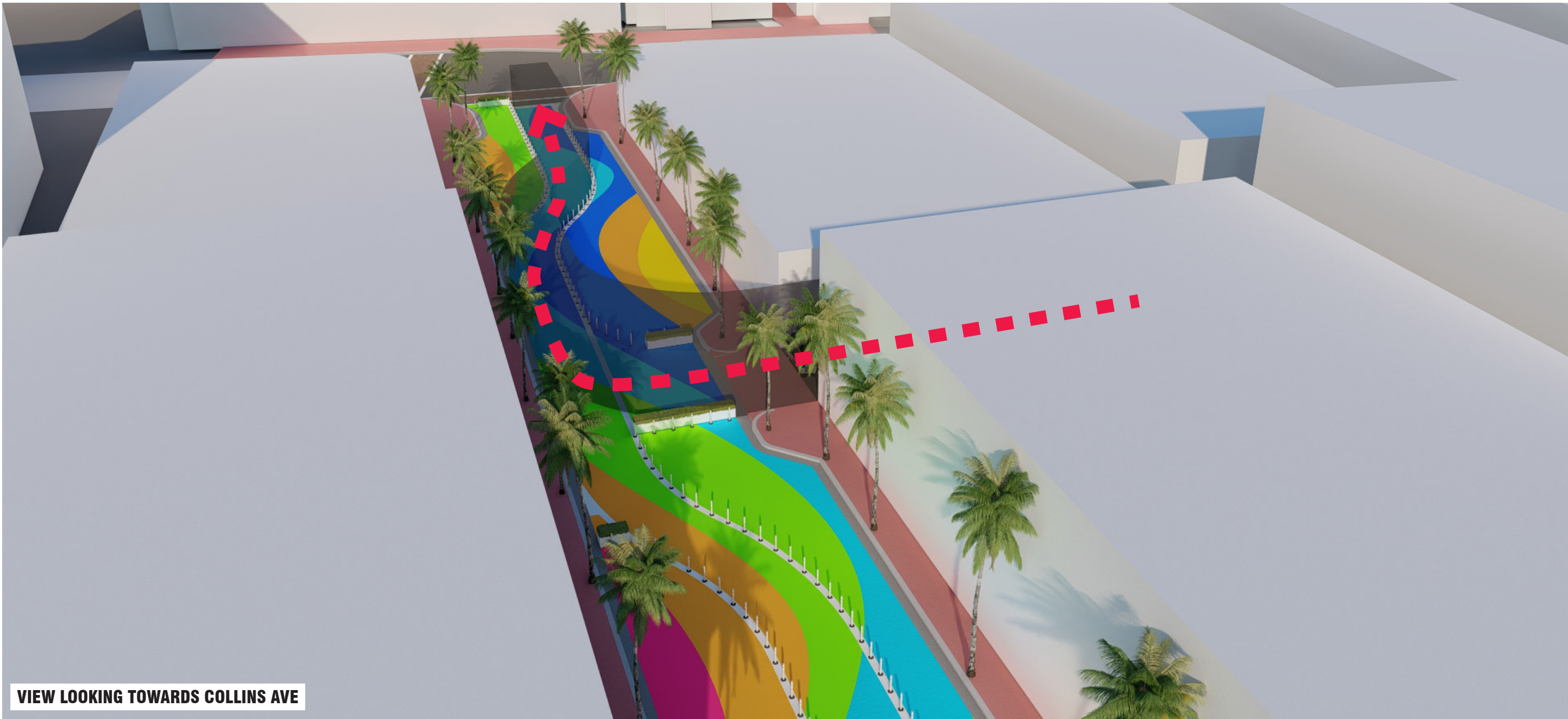
Calvin, Giordano & Associates, Inc.
A SAFEbuilt COMPANY



Española Way Between Washington and Collins Ave



Española Way Between Washington and Collins Ave

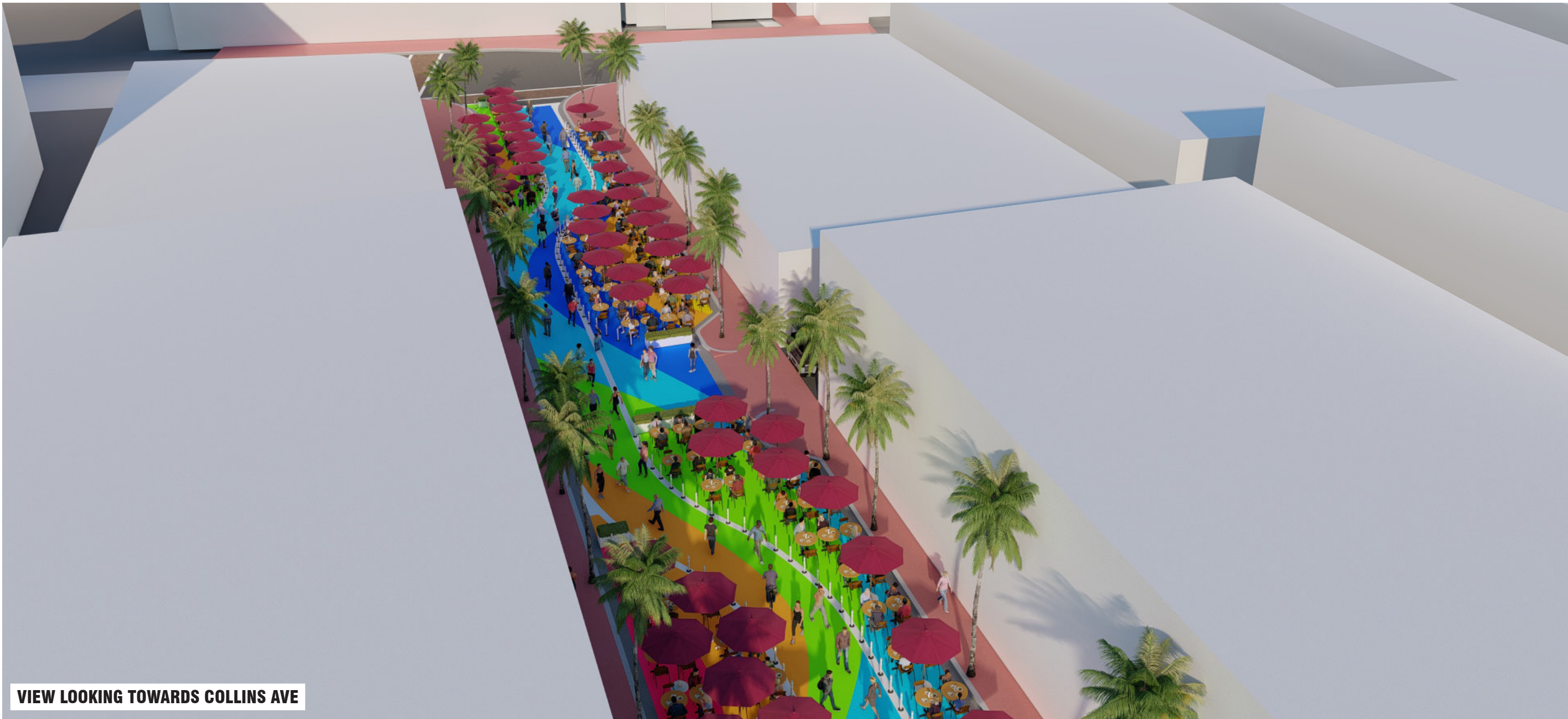


VIEW LOOKING TOWARDS COLLINS AVE

Española Way Between Washington and Collins Ave



Calvin, Giordano & Associates, Inc.
A SAFEbuilt COMPANY



VIEW LOOKING TOWARDS COLLINS AVE

Española Way Between Washington and Collins Ave



Calvin, Giordano & Associates, Inc.
A SAFEbuilt COMPANY



Española Way Between Washington and Collins Ave



Calvin, Giordano & Associates, Inc.
A SAFEbuilt COMPANY



AFTER

Española Way Between Washington and Collins Ave



Calvin, Giordano & Associates, Inc.
A SAFEbuilt COMPANY

14TH PLACE



Calvin, Giordano & Associates, Inc.
A SAFEbuilt[®] COMPANY



Eye-level View Conceptual Rendering



Calvin, Giordano & Associates, Inc.
A SAFEbuilt COMPANY

PREVIOUS STAKEHOLDER REQUESTS (CURRENTLY UNFUNDED)





(Unfunded) Outreach Comments/Requests



Miamisburg, Ohio

Constructed: 2015

Span: Approx 50 ft

Budget Estimate: \$ 330,000 (adjusted for inflation and mark-up to reflect Hurricane Wind Load requirements)



Burien, Washington State

Constructed: 2017

Span: Approx 35 ft

Budget Estimate: \$ 485,000 (adjusted for inflation and mark-up to reflect Hurricane Wind Load requirements)

(Unfunded) Outreach Comments



(Unfunded) Drexel and Española Way



Urban Light Los Angeles, CA | Chris Burdens

(Unfunded) Example - Plaza de España

Observations

- Drexel access must remain open to vehicles:
 - School drop-off
 - Day-to-day access to westbound Española Way
 - Fire Dept and Emergency Response
 - Deliveries
 - Trash and garbage pickup
- Access and clearances for large truck-scale vehicles must be maintained
- Limited to a canopy/overhead type of installation
 - Cannot paint (damage) existing paver plaza
 - Lighting requires in-ground conduits to be installed



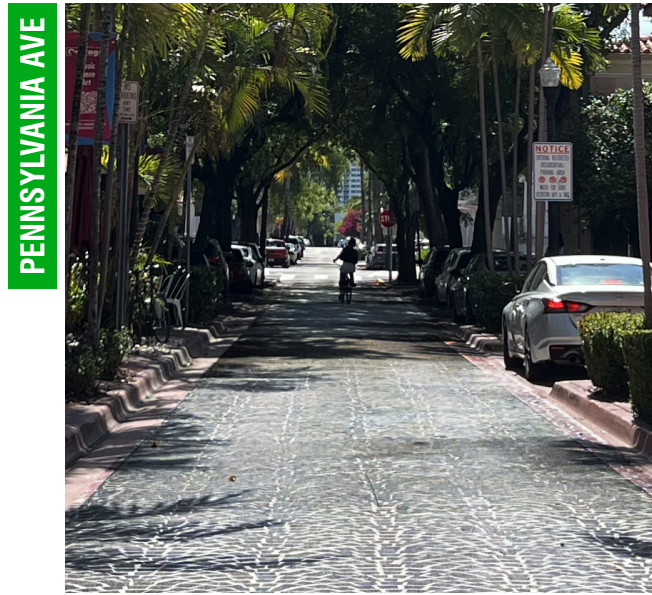
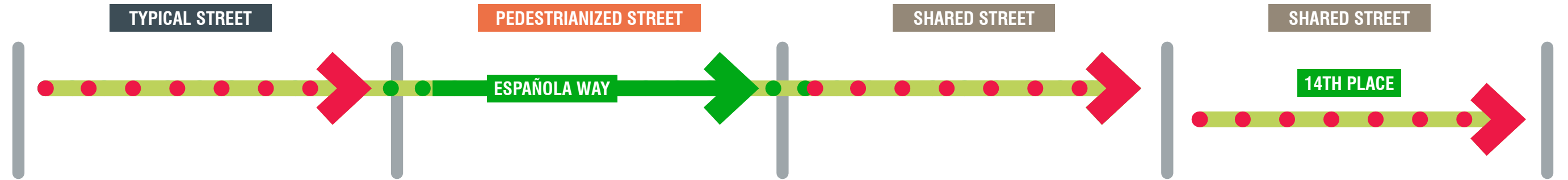
(Unfunded) Plaza de España

SUMMARY



Calvin, Giordano & Associates, Inc.
A SAFEbuilt[®] COMPANY

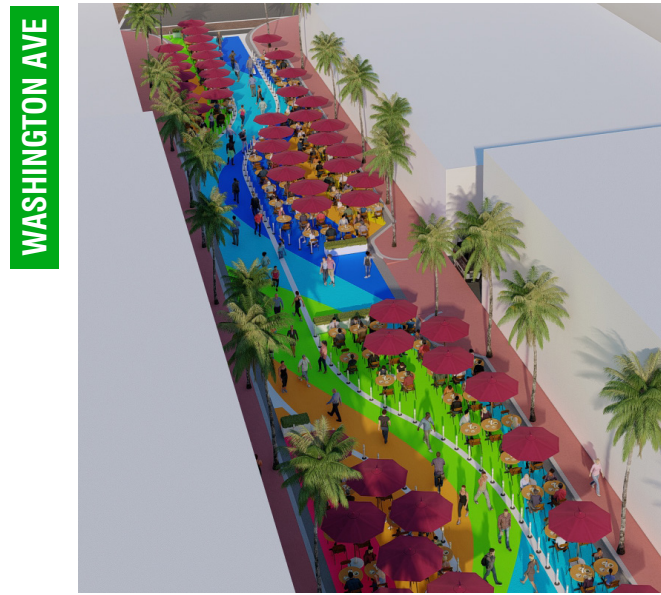
PROJECT FOCUS



Pennsylvania to Drexel
 Stamped asphalt to match general paving pattern of pedestrianized segment of Española Way



Drexel to Washington
 Constructed, Pedestrianized segment of Española Way



Washington to Collins
 Tactical Urbanism project with painted asphalt and creation of usable social space within the re-purposed travel lanes.



Collins to Ocean Dr
 Tactical Urbanism project with painted asphalt

On-going Tasks

- On-going coordination efforts with Miami-Dade County for:
 - traffic study approval
 - permitting for design
- Pavement Marking and Striping Plans for the Tactical Urbanism and Stamped Asphalt components being completed.



Española Way | Tactical Urbanism



Calvin, Giordano & Associates, Inc.
A SAFEbuilt[®] COMPANY

Next Tasks

- **March 7, 2023:** Public Outreach Meeting
- **March - May:** Process and obtain permits through Miami-Dade County
- **June - August:** Procure a contractor through the City's procurement process
- **July:** Community Outreach, focusing on Tactical Urbanism component
- **September:** Commence construction the project

Española Way | Tactical Urbanism

