





**PROJECT DATA**

SCOPE OF WORK:  
NEW 2-STORY, CBS, SINGLE FAMILY RESIDENCE

OCCUPANCY TYPE:  
RESIDENTIAL RS-4

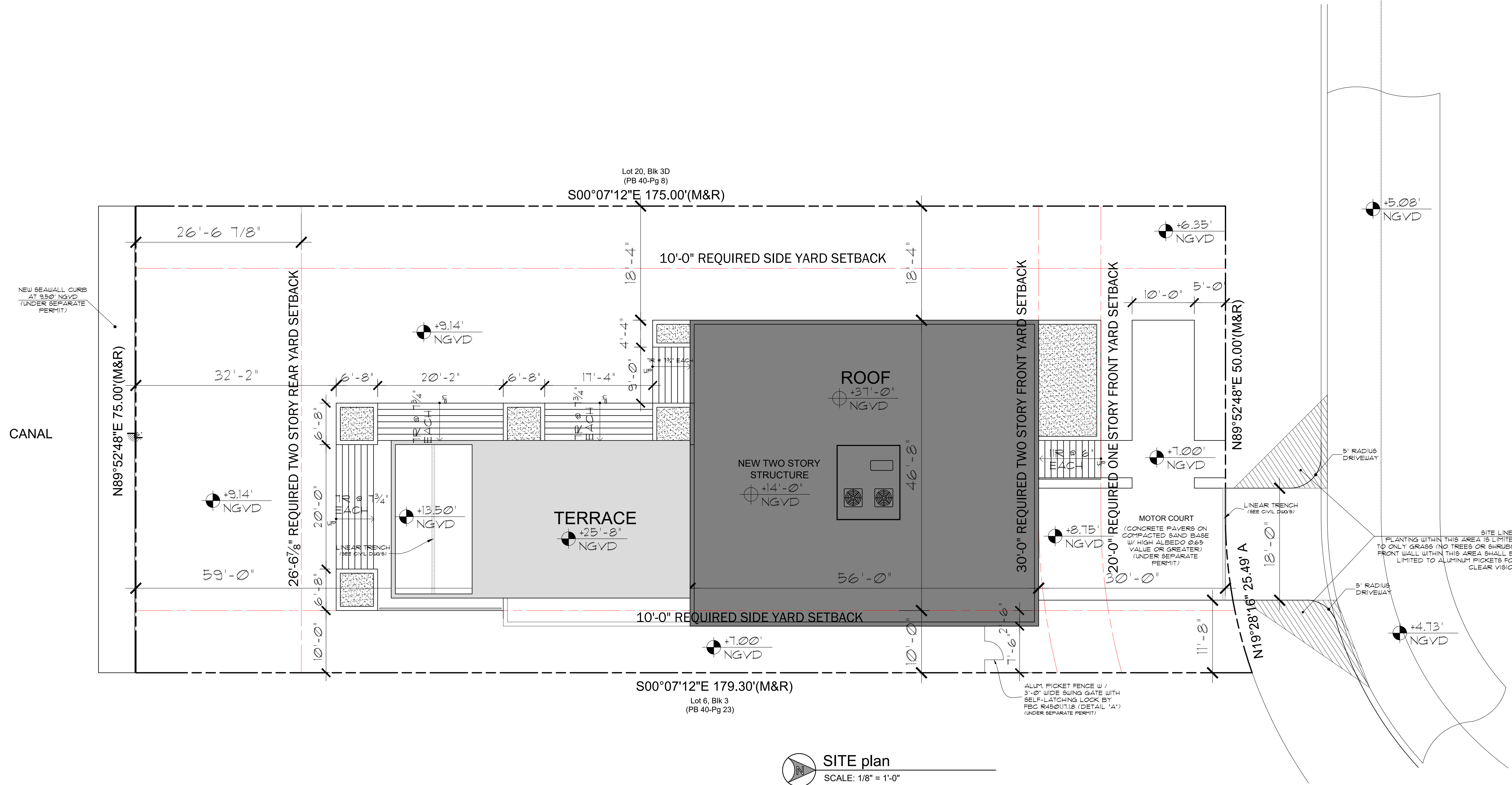
CONSTRUCTION TYPE:  
TYPE V-B

FLOOD DESIGN CLASS:  
2

**LEGAL DESCRIPTION**

LOT 19, BLOCK 3-D, OF REVISED PLAT OF SUNSET ISLANDS, ACCORDING TO THE PLAT THEREOF AS RECORDED IN PLAT BOOK 40 AT PAGE 8, OF THE PUBLIC RECORDS OF MIAMI-DADE COUNTY, FLORIDA.

FOLIO NUMBER: 02-3228-001-1500



**SITE plan**  
SCALE: 1/8" = 1'-0"

**1400 SUNSET RESIDENCE**  
1400 W 23rd ST MIAMI BEACH FLORIDA 33140

Project: 2206-22



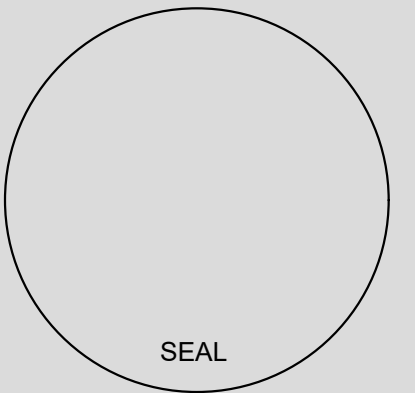
**A12 DESIGN CORP**  
(305) 520-9242

Revisions:

THE HALL GROUP LLC.



ARCHITECT OF RECORD  
DANIEL C. HALL, AIA, NOMA  
AR. 0013563



Scale:

**A-1.0**

Plot Date: 2022-12-13



































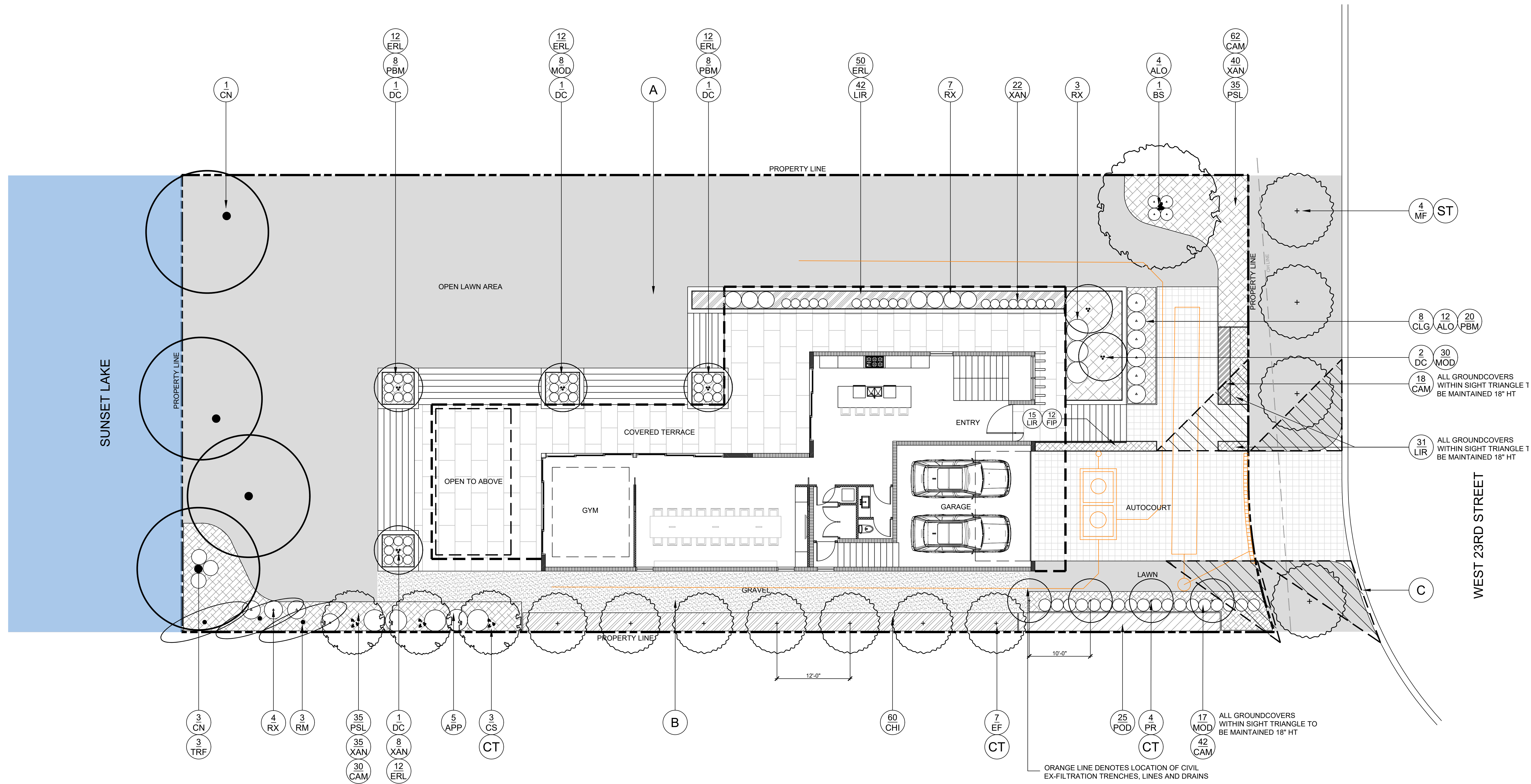










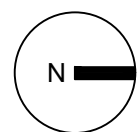


**LANDSCAPE PLAN LEGEND**

- (A) NATIVE SEA SHORE PASPALUM LAWN - OVER 2" TOPSOIL BED, SEE PLANTING SPECS +/- 5,330 SF
- (B) 3/8" GREY DECOMPOSED GRANITE AGGREGATE OVER FILTER FABRIC +/- 652 SF
- (C) 15' VISIBILITY SITE TRIANGLE AS PER C.M.B. REGULATIONS

- (CT) CODE TREE
- (ST) STREET TREE

**FIRST FLOOR LANDSCAPE PLAN**



**CHRISTOPHER CAWLEY LANDSCAPE ARCHITECTURE**  
 780 NE 69th Street, Suite 200 Miami, Florida 33138  
 (786) 536-2961 | (305) 979-1585  
 CHRISTOPHERCAWLEY.COM | LIC 20000489

Project: 2206-22



**A12 DESIGN CORP**  
 (305) 520-9242

Revisions:

THE HALL GROUP LLC.

**THG**

ARCHITECT OF RECORD  
 DANIEL C. HALL, AIA, NOMA  
 AR. 0013563

CHRISTOPHER CAWLEY, RLA  
 Florida License LA 6690786



Scale:

**L-2.0**

Plot Date: 2022-12-14



