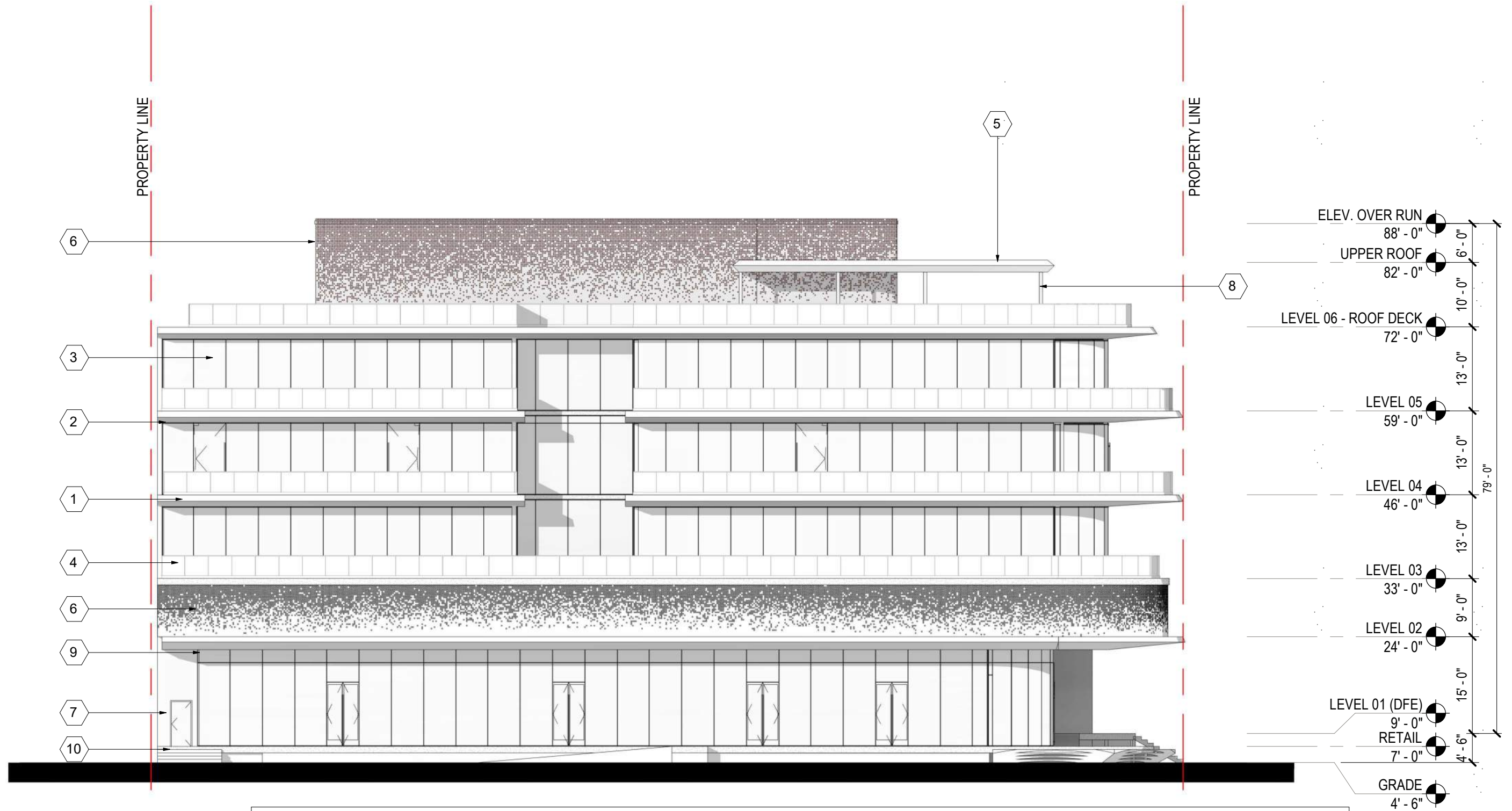


NOTE:
SIGNAGE TO BE SUBMITTED
UNDER SEPERATE PERMIT.

1 NORTH ELEVATION
SCALE: 1/16" = 1'-0"

EXTERIOR MATERIAL LEGEND					
1	DESCRIPTION: SLAB EDGE COVERS MATERIAL: GFRC FINISH: WHITE MANUFACTURER: BUILDING BLOCKS	3	DESCRIPTION: STOREFRONT MATERIAL: INSULATED, LAMINATED GLASS FINISH: CLEAR MANUFACTURER: ES WINDOWS	5	DESCRIPTION: FIXED SHADE STRUCTURE MATERIAL: METAL PLATE FINISH: COPPER COLOR PAINT MANUFACTURER: A. ZAHNER
2	DESCRIPTION: SOFFIT MATERIAL: METAL PLATE FINISH: COPPER COLOR PAINT MANUFACTURER: A. ZAHNER	4	DESCRIPTION: BALCONY GUARDRAIL MATERIAL: LAMINATED GLASS FINISH: CLEAR MANUFACTURER: PPG	6	DESCRIPTION: PERFORATED METAL PANEL MATERIAL: METAL PLATE FINISH: COPPER COLOR PAINT MANUFACTURER: A. ZAHNER
				7	DESCRIPTION: STUCCO MATERIAL: SMOOTH TROWEL FINISH: PAINTED WHITE
				8	DESCRIPTION: COLUMNS MATERIAL: GALV. STL FINISH: COPPER COLOR PAINT
				9	DESCRIPTION: MULLIONS MATERIAL: ALUM. FINISH: TO MATCH COPPER COLOR PAINT MANUFACTURER: ES WINDOWS
				10	DESCRIPTION: EXPOSED CONCRETE MATERIAL: CONCRETE FINISH: ARCHITECTURAL FINISHED CONCRETE

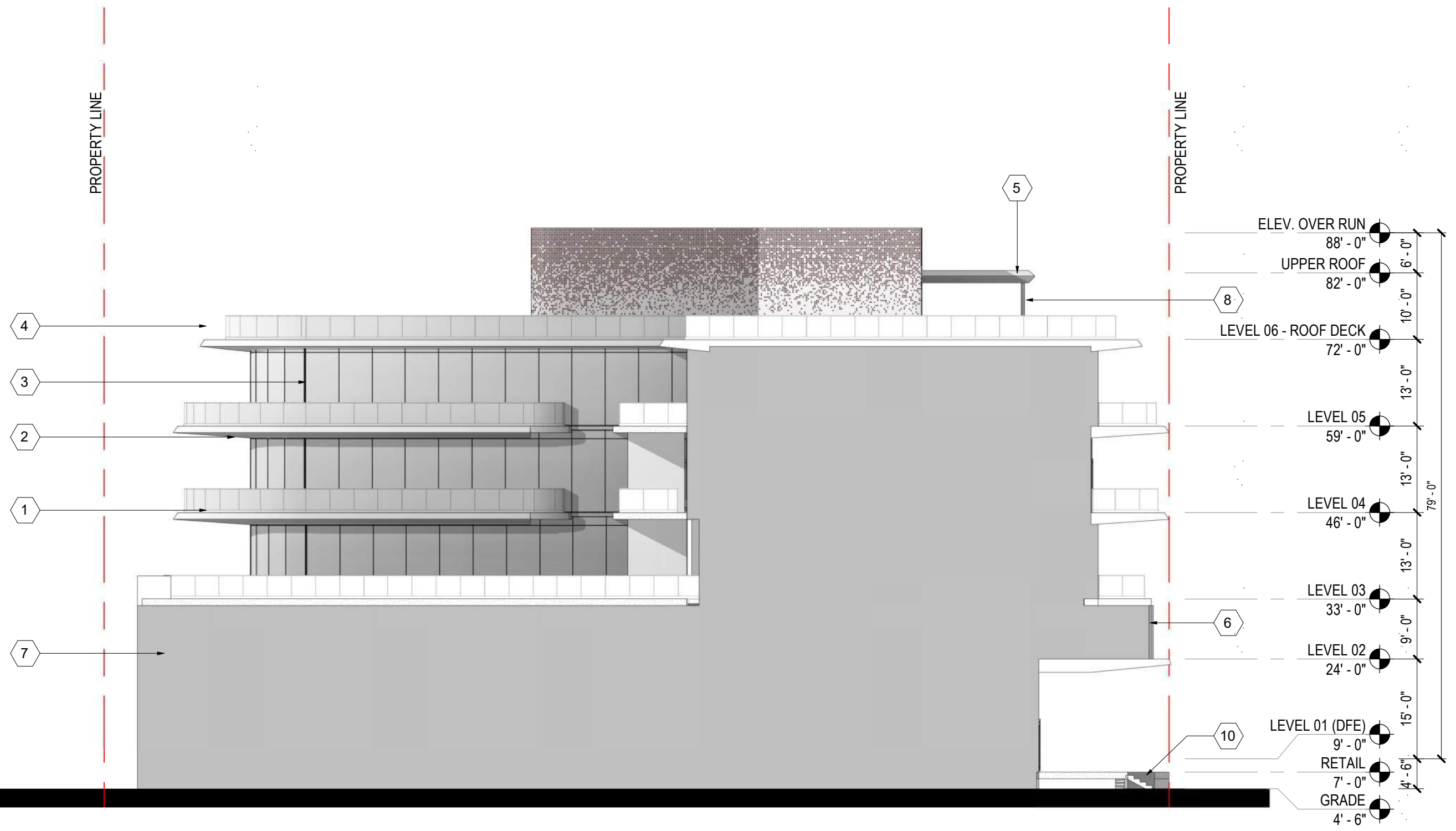


NOTE:
SIGNAGE TO BE SUBMITTED
UNDER SEPERATE PERMIT.

1 EAST ELEVATION
SCALE: 1/16" = 1'-0"

EXTERIOR MATERIAL LEGEND

<p>1 DESCRIPTION: SLAB EDGE COVERS MATERIAL: GFRC FINISH: WHITE MANUFACTURER: BUILDING BLOCKS</p>	<p>3 DESCRIPTION: STOREFRONT MATERIAL: INSULATED, LAMINATED GLASS FINISH: CLEAR MANUFACTURER: ES WINDOWS</p>	<p>5 DESCRIPTION: FIXED SHADE STRUCTURE MATERIAL: METAL PLATE FINISH: COPPER COLOR PAINT MANUFACTURER: A. ZAHNER</p>	<p>7 DESCRIPTION: STUCCO MATERIAL: SMOOTH TROWEL FINISH: PAINTED WHITE</p>	<p>9 DESCRIPTION: MULLIONS MATERIAL: ALUM. FINISH: TO MATCH COPPER COLOR PAINT MANUFACTURER: ES WINDOWS</p>
<p>2 DESCRIPTION: SOFFIT MATERIAL: METAL PLATE FINISH: COPPER COLOR PAINT MANUFACTURER: A. ZAHNER</p>	<p>4 DESCRIPTION: BALCONY GUARDRAIL MATERIAL: LAMINATED GLASS FINISH: CLEAR MANUFACTURER: PPG</p>	<p>6 DESCRIPTION: PERFORATED METAL PANEL MATERIAL: METAL PLATE FINISH: COPPER COLOR PAINT MANUFACTURER: A. ZAHNER</p>	<p>8 DESCRIPTION: COLUMNS MATERIAL: GALV. STL FINISH: COPPER COLOR PAINT</p>	<p>10 DESCRIPTION: EXPOSED CONCRETE MATERIAL: CONCRETE FINISH: ARCHITECTURAL FINISHED CONCRETE</p>



NOTE:
SIGNAGE TO BE SUBMITTED
UNDER SEPERATE PERMIT.

1 SOUTH ELEVATION
SCALE: 1/16" = 1'-0"

EXTERIOR MATERIAL LEGEND

1 DESCRIPTION: SLAB EDGE COVERS
MATERIAL: GFRC
FINISH: WHITE
MANUFACTURER: BUILDING BLOCKS

2 DESCRIPTION: SOFFIT
MATERIAL: METAL PLATE
FINISH: COPPER COLOR PAINT
MANUFACTURER: A. ZAHNER

3 DESCRIPTION: STOREFRONT
MATERIAL: INSULATED, LAMINATED GLASS
FINISH: CLEAR
MANUFACTURER: ES WINDOWS

4 DESCRIPTION: BALCONY GUARDRAIL
MATERIAL: LAMINATED GLASS
FINISH: CLEAR
MANUFACTURER: PPG

5 DESCRIPTION: FIXED SHADE STRUCTURE
MATERIAL: METAL PLATE
FINISH: COPPER COLOR PAINT
MANUFACTURER: A. ZAHNER

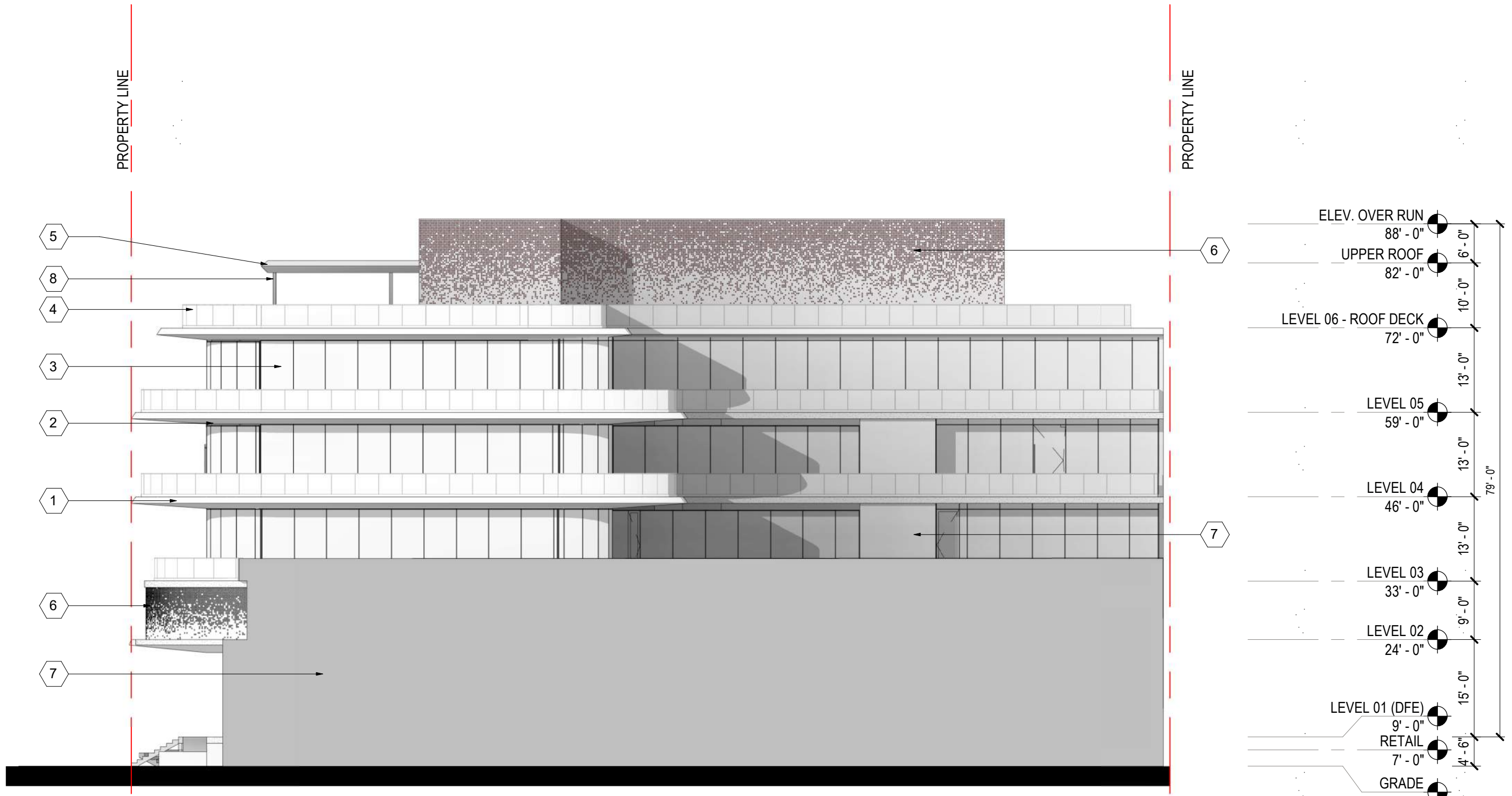
6 DESCRIPTION: PERFORATED METAL PANEL
MATERIAL: METAL PLATE
FINISH: COPPER COLOR PAINT
MANUFACTURER: A. ZAHNER

7 DESCRIPTION: STUCCO
MATERIAL: SMOOTH TROWEL
FINISH: PAINTED WHITE

8 DESCRIPTION: COLUMNS
MATERIAL: GALV. STL
FINISH: COPPER COLOR PAINT

9 DESCRIPTION: MULLIONS
MATERIAL: ALUM.
FINISH: TO MATCH COPPER COLOR PAINT
MANUFACTURER: ES WINDOWS

10 DESCRIPTION: EXPOSED CONCRETE
MATERIAL: CONCRETE
FINISH: ARCHITECTURAL FINISHED CONCRETE

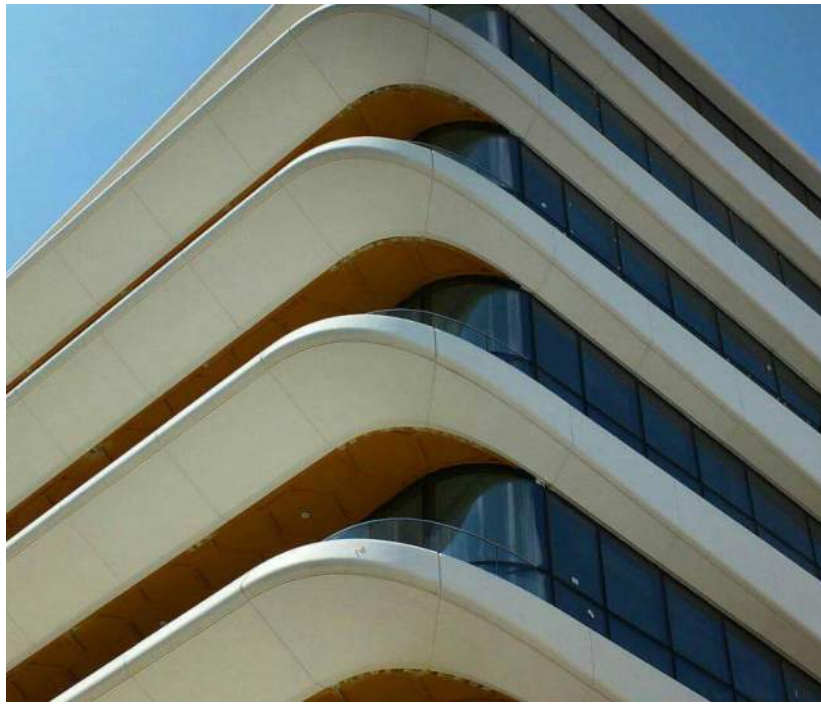


NOTE:
SIGNAGE TO BE SUBMITTED
UNDER SEPERATE PERMIT.

1 WEST ELEVATION
SCALE: 1/16" = 1'-0"

EXTERIOR MATERIAL LEGEND

<p>1 DESCRIPTION: SLAB EDGE COVERS MATERIAL: GFRC FINISH: WHITE MANUFACTURER: BUILDING BLOCKS</p>	<p>3 DESCRIPTION: STOREFRONT MATERIAL: INSULATED, LAMINATED GLASS FINISH: CLEAR MANUFACTURER: ES WINDOWS</p>	<p>5 DESCRIPTION: FIXED SHADE STRUCTURE MATERIAL: METAL PLATE FINISH: COPPER COLOR PAINT MANUFACTURER: A. ZAHNER</p>	<p>7 DESCRIPTION: STUCCO MATERIAL: SMOOTH TROWEL FINISH: PAINTED WHITE</p>	<p>9 DESCRIPTION: MULLIONS MATERIAL: ALUM. FINISH: TO MATCH COPPER COLOR PAINT MANUFACTURER: ES WINDOWS</p>
<p>2 DESCRIPTION: SOFFIT MATERIAL: METAL PLATE FINISH: COPPER COLOR PAINT MANUFACTURER: A. ZAHNER</p>	<p>4 DESCRIPTION: BALCONY GUARDRAIL MATERIAL: LAMINATED GLASS FINISH: CLEAR MANUFACTURER: PPG</p>	<p>6 DESCRIPTION: PERFORATED METAL PANEL MATERIAL: METAL PLATE FINISH: COPPER COLOR PAINT MANUFACTURER: A. ZAHNER</p>	<p>8 DESCRIPTION: COLUMNS MATERIAL: GALV. STL FINISH: COPPER COLOR PAINT</p>	<p>10 DESCRIPTION: EXPOSED CONCRETE MATERIAL: CONCRETE FINISH: ARCHITECTURAL FINISHED CONCRETE</p>



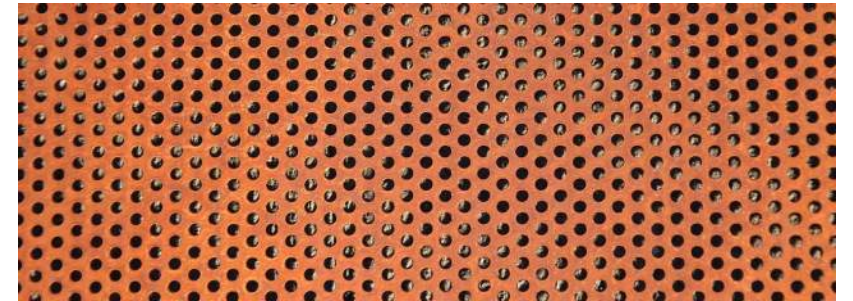
1. GFRC



3. INSULATED GLASS



5. METAL TRELLIS



6. PERFORATED METAL PANEL - COPPER



2. METAL PANEL



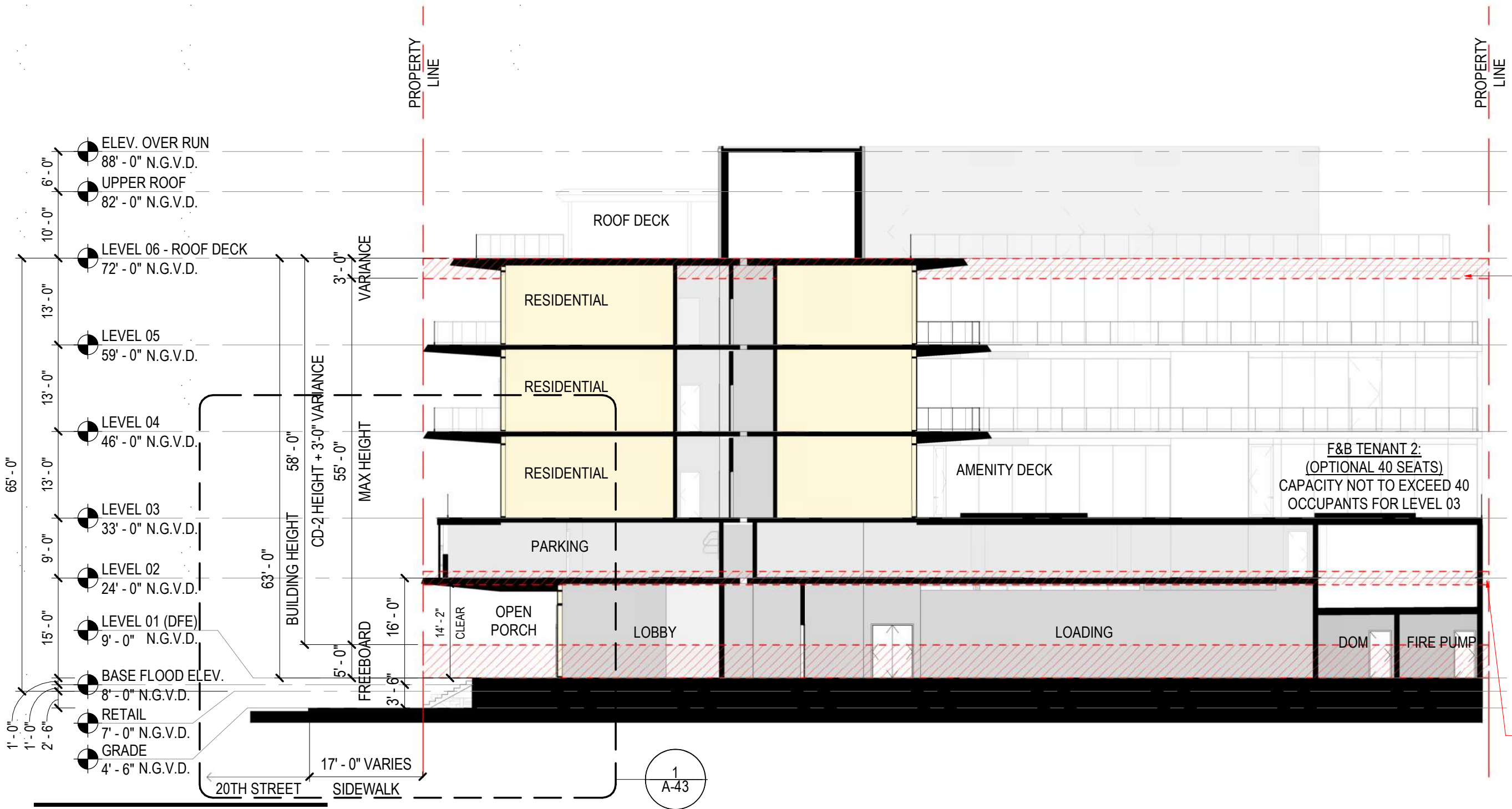
4. GLASS RAILING



7. STUCCO



PLANTERS

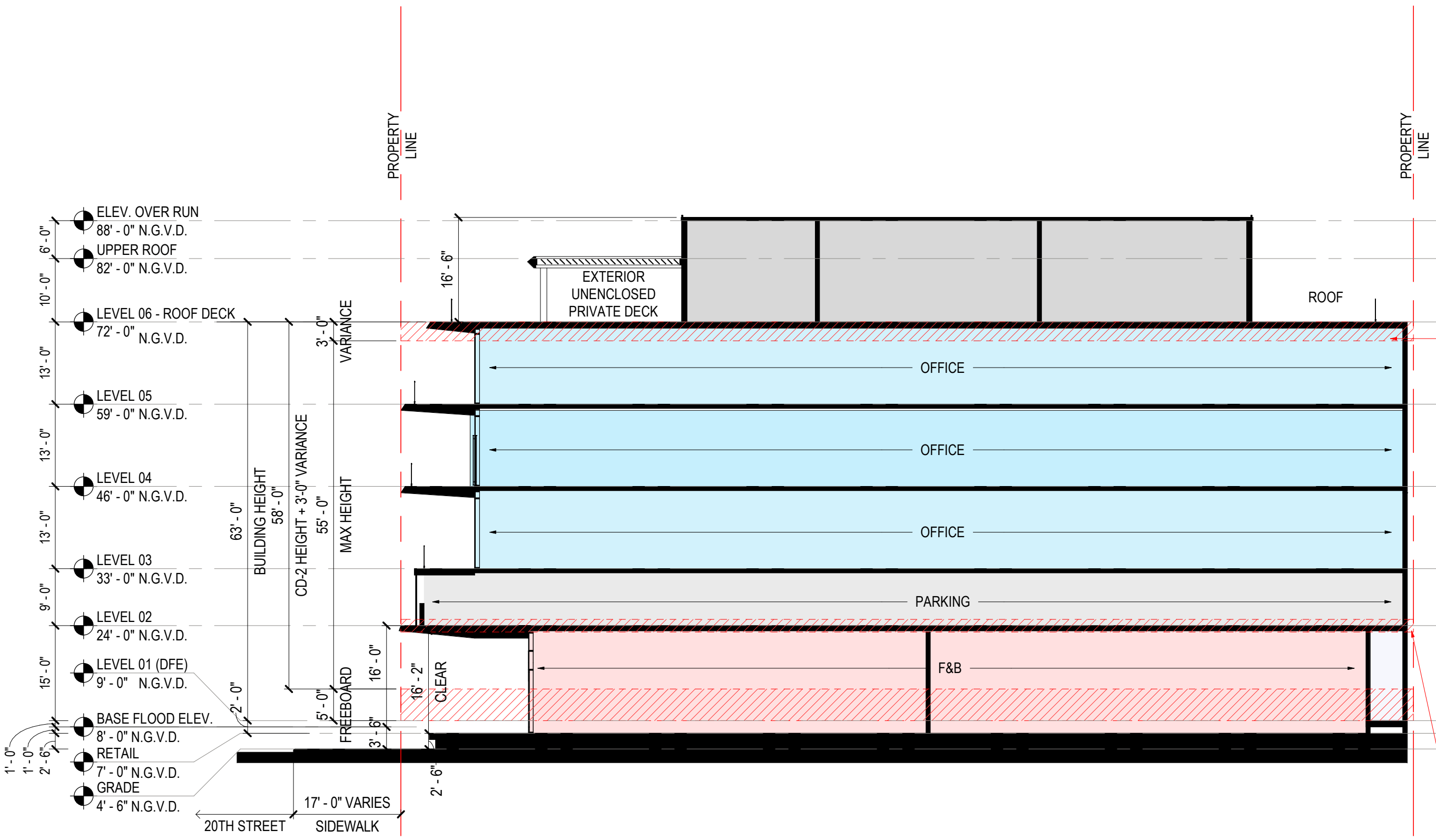


VARIANCE TO ALLOW A BUILDING HEIGHT OF 58 FEET WHERE 55 FEET IS PERMITTED PURSUANT TO SECTION 142-306

- ROOM COLOR LEGEND**
- BOH
 - CIRCULATION
 - LOBBY
 - PARKING

VARIANCE TO ALLOW A HEIGHT OF 11 FEET WHERE 12 FEET ABOVE BASE FLOOD ELEVATION PLUS MAXIMUM FREEBOARD IS REQUIRED PURSUANT TO SECTION 142-306

1 BUILDING SECTION
SCALE: 1/16" = 1'-0"

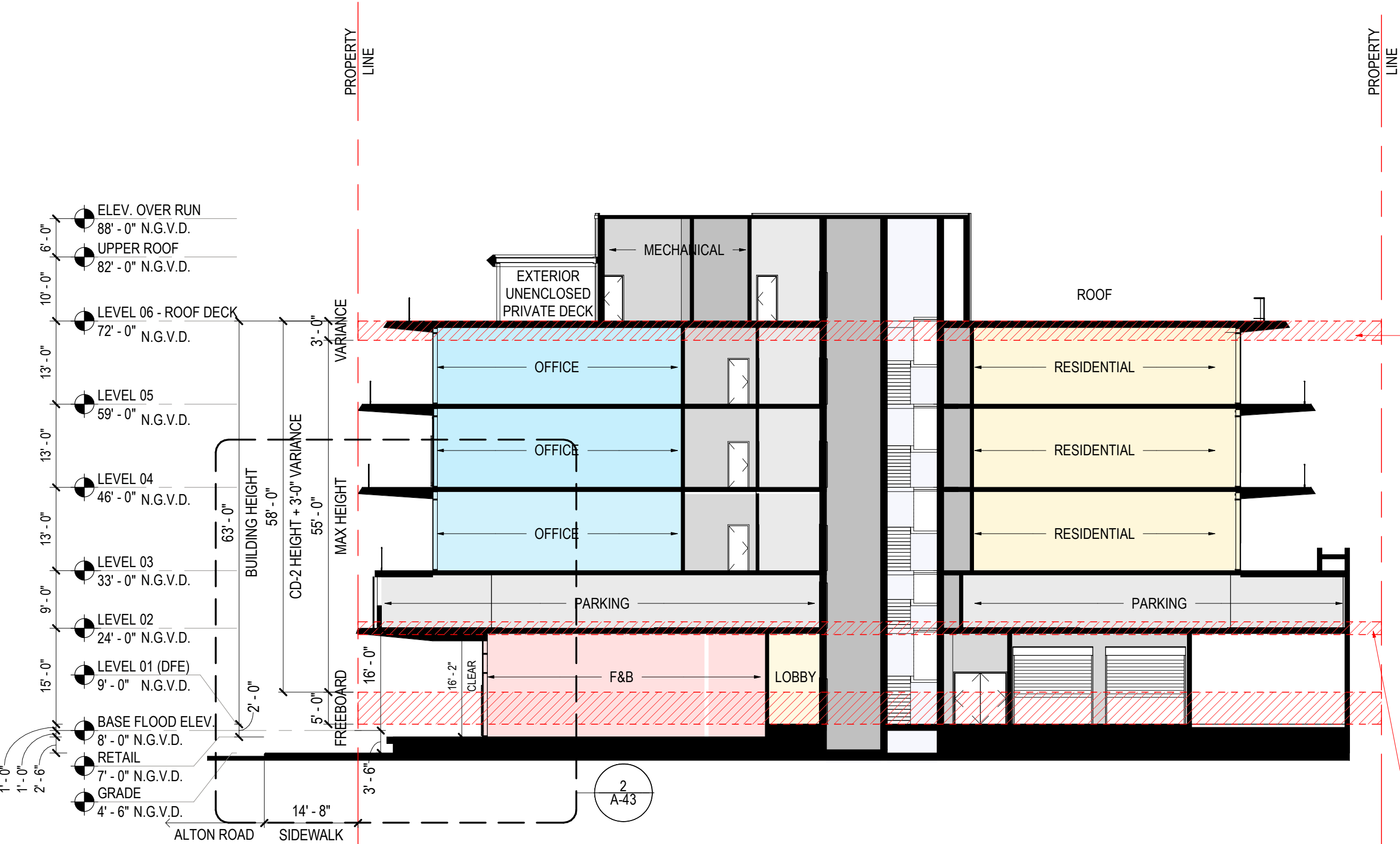


VARIANCE TO ALLOW A BUILDING HEIGHT OF 58 FEET WHERE 55 FEET IS PERMITTED PURSUANT TO SECTION 142-306

- ROOM COLOR LEGEND**
- BOH
 - CORE
 - F&B
 - OFFICE
 - PARKING

VARIANCE TO ALLOW A HEIGHT OF 11 FEET WHERE 12 FEET ABOVE BASE FLOOD ELEVATION PLUS MAXIMUM FREEBOARD IS REQUIRED PURSUANT TO SECTION 142-306

1 BUILDING SECTION
 SCALE: 1/16" = 1'-0"



PROPERTY LINE

PROPERTY LINE

VARIANCE TO ALLOW A BUILDING HEIGHT OF 58 FEET WHERE 55 FEET IS PERMITTED PURSUANT TO SECTION 142-306

ROOM COLOR LEGEND

- BOH
- CIRCULATION
- CORE
- F&B
- LOBBY
- OFFICE
- PARKING

VARIANCE TO ALLOW A HEIGHT OF 11 FEET WHERE 12 FEET ABOVE BASE FLOOD ELEVATION PLUS MAXIMUM FREEBOARD IS REQUIRED PURSUANT TO SECTION 142-306

1 BUILDING SECTION
SCALE: 1/16" = 1'-0"