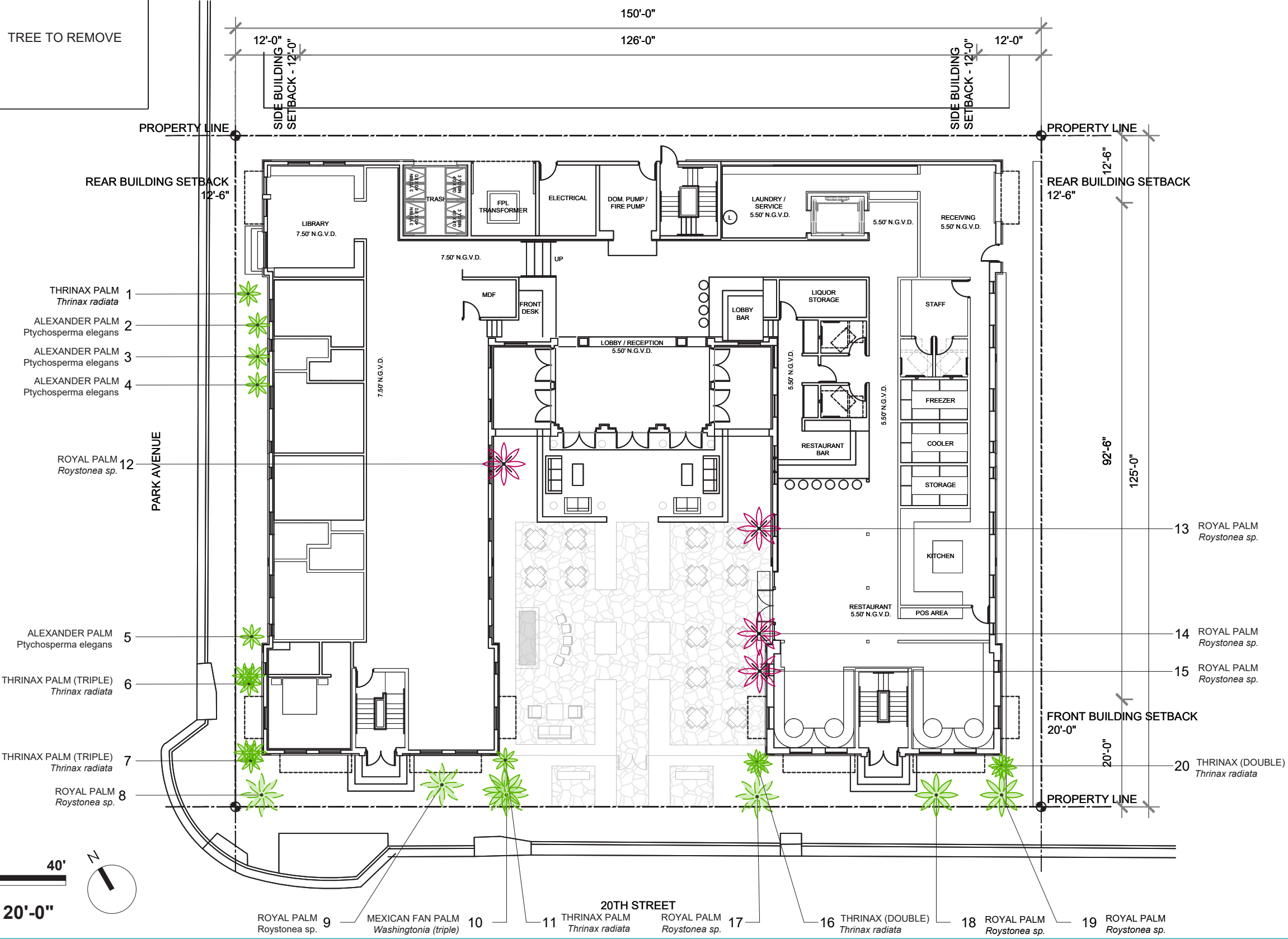


# TREE MITIGATION PLAN

**Legend**

TREE TO REMAIN

TREE TO REMOVE



SCALE: 1" = 20'-0"



# TREE REMOVALS

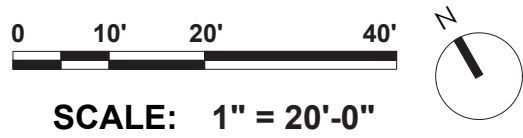
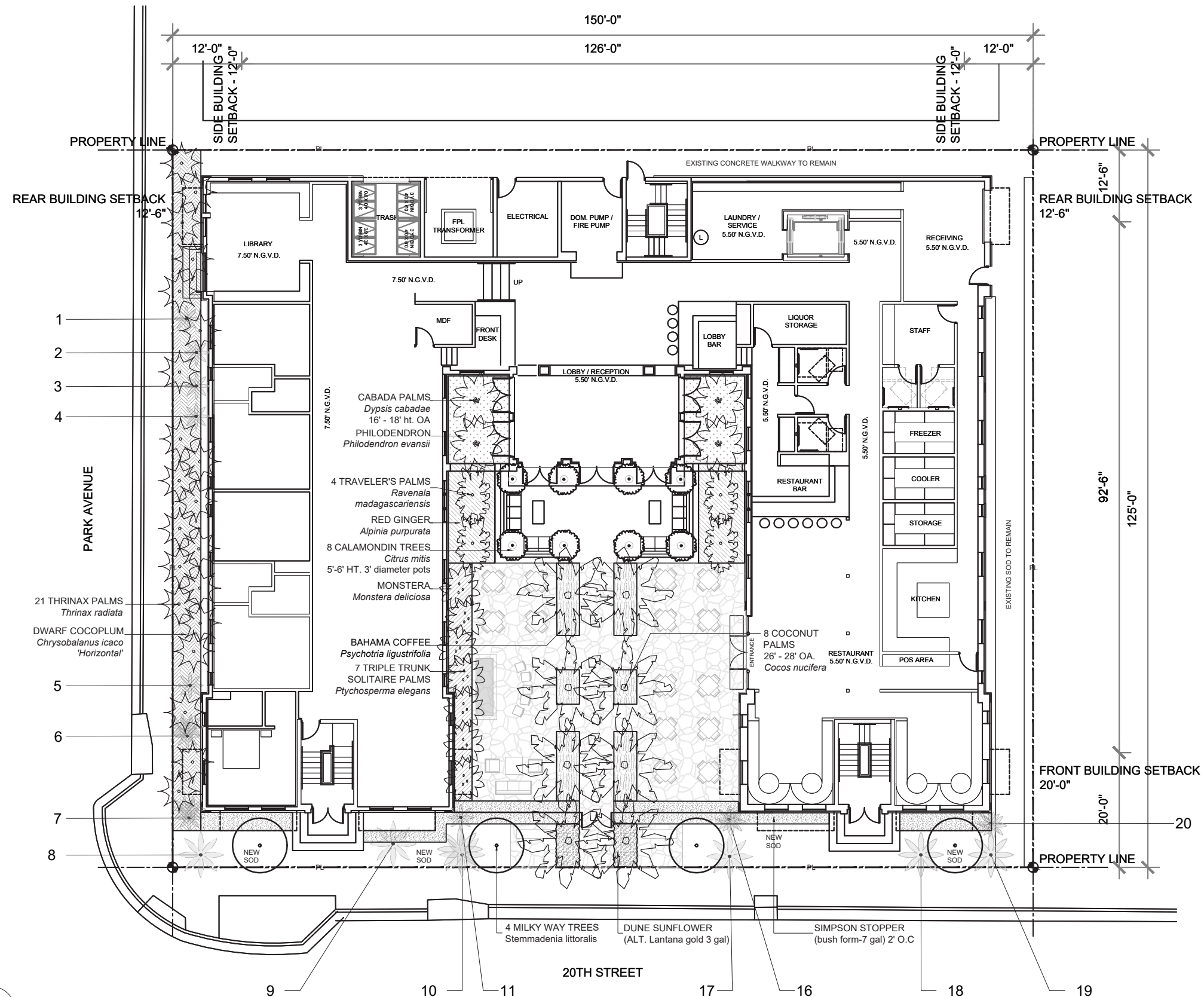
# TREE PRESERVATIONS



Four (4) Palms to be removed.  
Trees numbered 12, 13, 14, 15



# PLANTING PLAN



Palms



**Dypsis cabadae**  
*Cabada Palm*



**Cocos nucifera**  
*Coconut palm*



**Ptychosperma elegans**  
*Solitaire Palm*



**Ravenala madagascariensis**  
*Travelers Palm*



**Thatch Palm**  
*Thrinax radiata*



**Milky Way Tree**  
*Stemmadenia littoralis*

Shrubs and Groundcovers



**Simpson Stopper**  
*Myrcianthes fragrans*



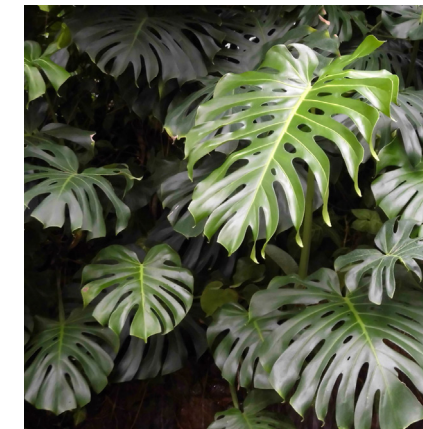
**Bahama Coffee**  
*Psychotria ligustrifolia*



**Dune Sunflower**  
*Helianthus debilis*



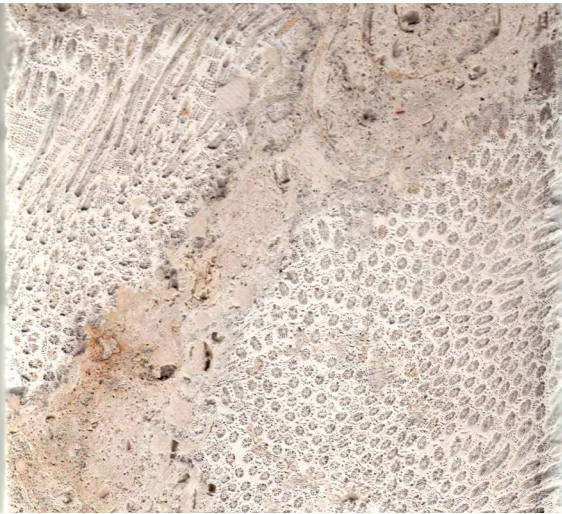
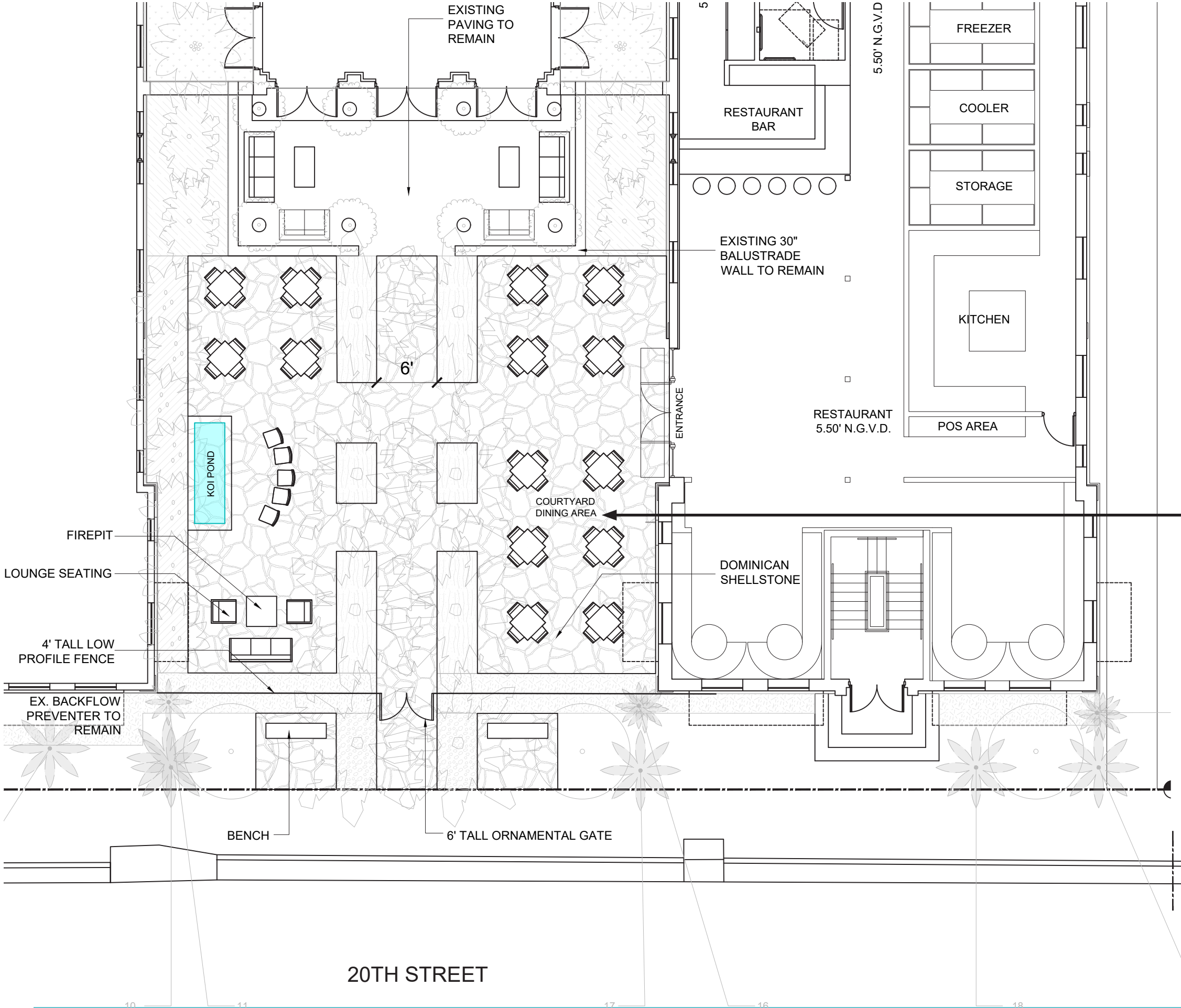
**Wild Sage**  
*Lantana depressa var. depressa*



**Swiss Cheese Monstera**  
*Monstera deliciosa*



# HARDSCAPE PLAN



**Dominican Shellstone Detail**



**Dominican Shellstone Flagstone**



**SCALE: 1" = 20'-0"**

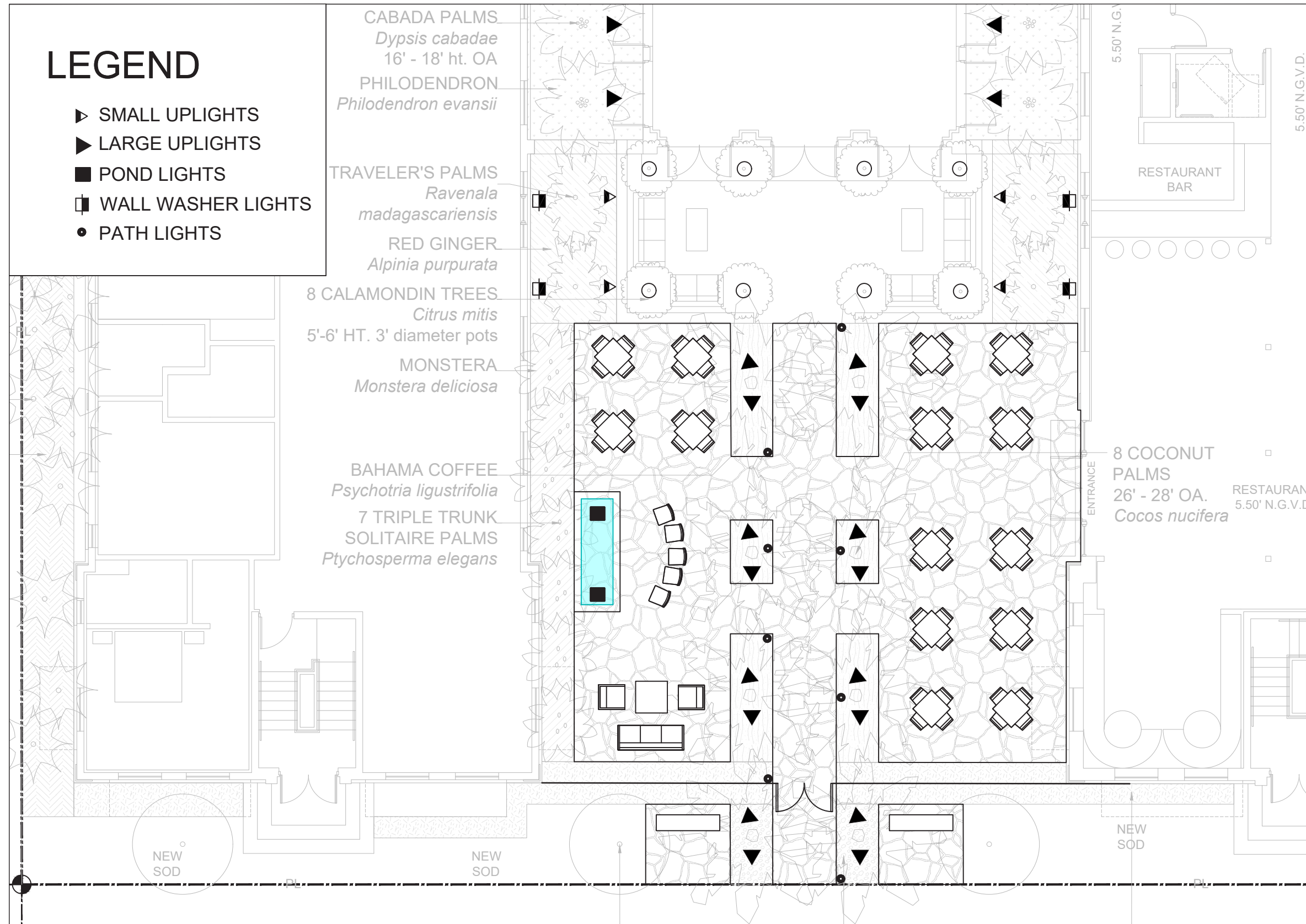


# LIGHTING PLAN

## LEGEND

- ▶ SMALL UPLIGHTS
- ▶ LARGE UPLIGHTS
- POND LIGHTS
- ▣ WALL WASHER LIGHTS
- PATH LIGHTS

- CABADA PALMS  
*Dyopsis cabadae*  
16' - 18' ht. OA
- PHILODENDRON  
*Philodendron evansii*
- TRAVELER'S PALMS  
*Ravenala madagascariensis*
- RED GINGER  
*Alpinia purpurata*
- 8 CALAMONDIN TREES  
*Citrus mitis*  
5'-6' HT. 3' diameter pots
- MONSTERA  
*Monstera deliciosa*
- BAHAMA COFFEE  
*Psychotria ligustrifolia*
- 7 TRIPLE TRUNK  
SOLITAIRE PALMS  
*Ptychosperma elegans*



Palm Uplighting (large and small)  
BK Lighting - Denali on Power Pipe  
LED, 12-27 Watts - Tree Dependant



Flood light - Yosemite Integral  
BK Lighting - Wall wash optic  
LED, 23 or 34 Watts - modular design



Path and area - Square Litestick  
BK Lighting - 3 Power Pipe options  
LED, 3 Watts - modular design

