


VARELA RESIDENCE
845 W 46th STREET, MIAMI BEACH, FLORIDA 33140
12.12.2022

DRB22-0895
DESIGN REVIEW BOARD - FINAL SUBMITTAL

MANUEL D. FERNANDEZ
AR 95601
VOLUMETRIC STUDY
A 6.8

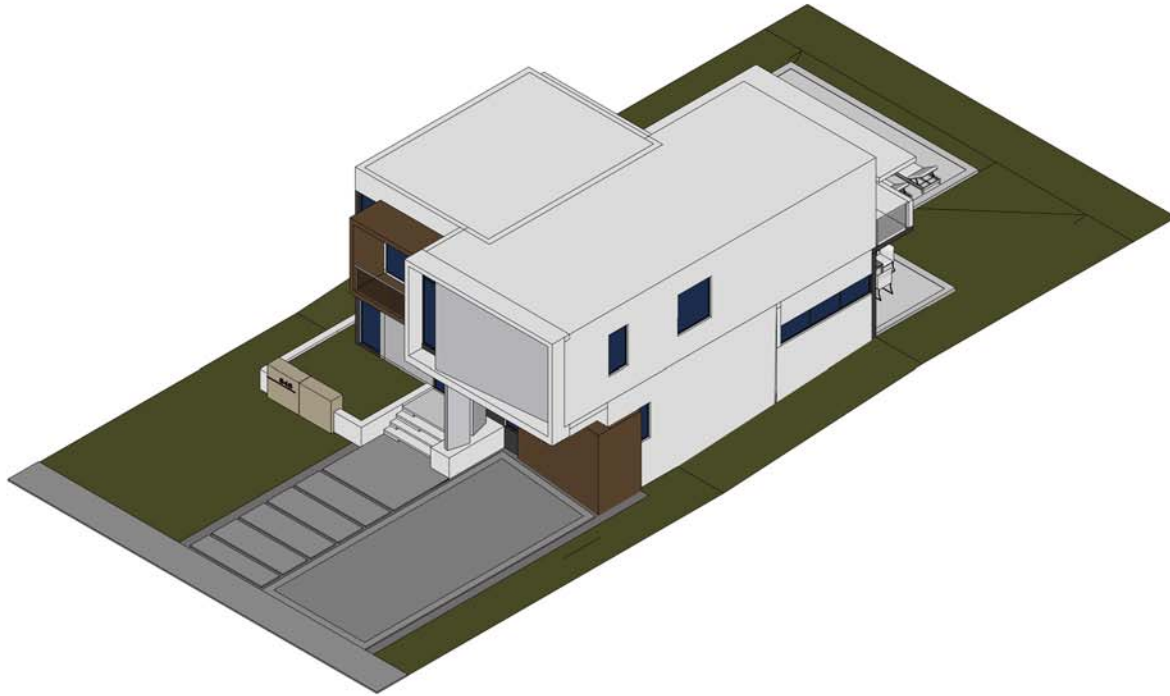


3

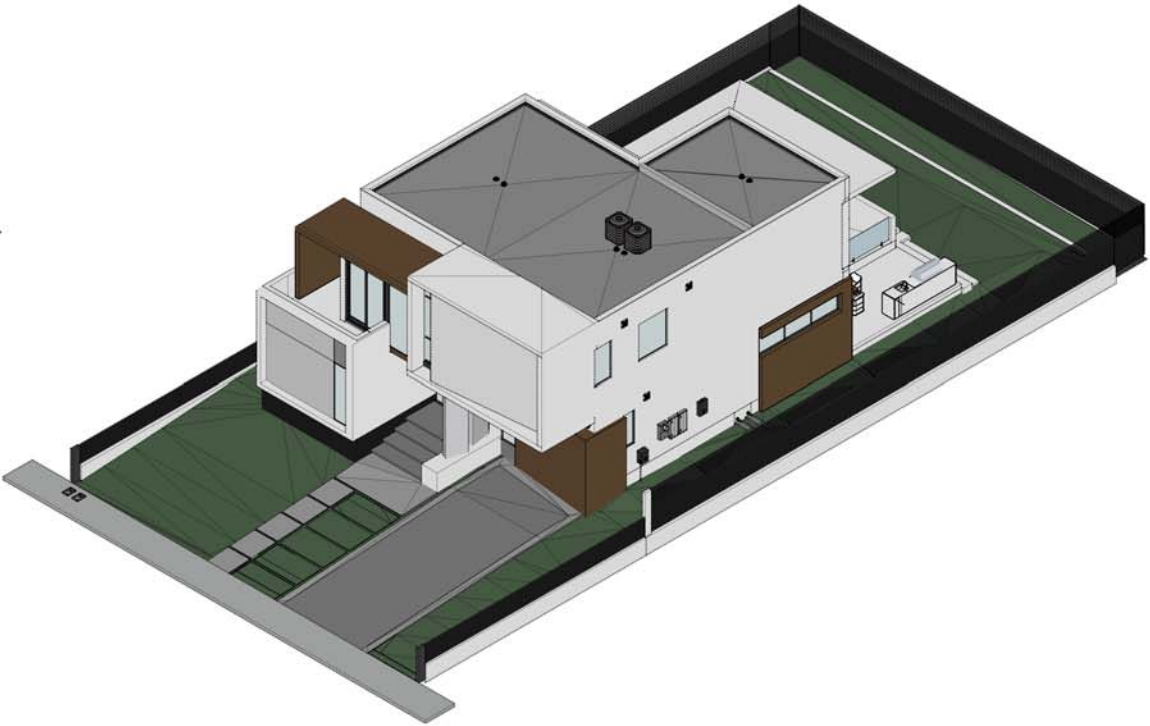
8103 NW 33RD STREET
DORAL, FLORIDA 33122
O: 305.559.1496
AA26002069

ARCHITECTURAL GROUP

copyright 2022 V3 Architectural Group, Inc.:
All rights reserved. These drawings and specifications are instruments of service and shall remain the property of V3 Architectural Group, Inc. whether the product for which they were prepared is executed or not. They are not to be used in any manner on other projects or extensions to the project except by agreement in writing and with appropriate compensation to V3 Architectural Group, Inc.. Reproductions of specifications without the written consent of V3 Architectural Group, Inc. is prohibited.



(PROPOSED 1)




(CURRENT)

VARELA RESIDENCE
 845 W 46th STREET, MIAMI BEACH, FLORIDA 33140
 12.12.2022

DRB22-0895
 DESIGN REVIEW BOARD - FINAL SUBMITTAL

MANUEL D. FERNANDEZ
 AR 95601
 VOLUMETRIC STUDY
 A 6.9

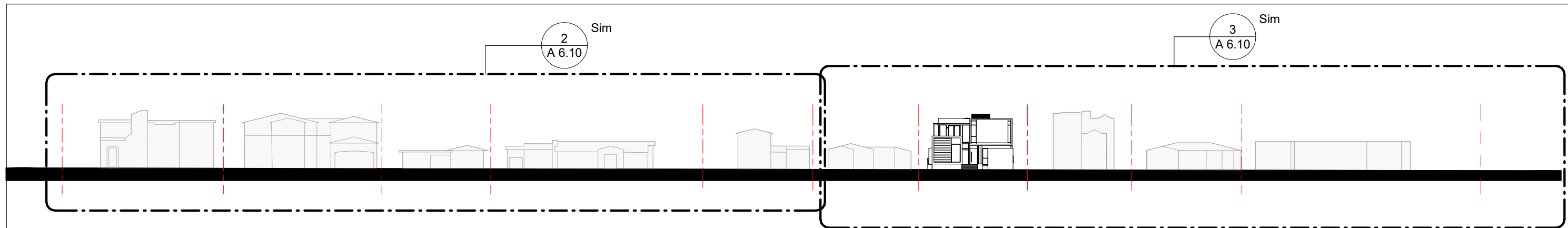


3

8103 NW 33RD STREET
 DORAL, FLORIDA 33122
 O: 305.559.1496
AA26002069

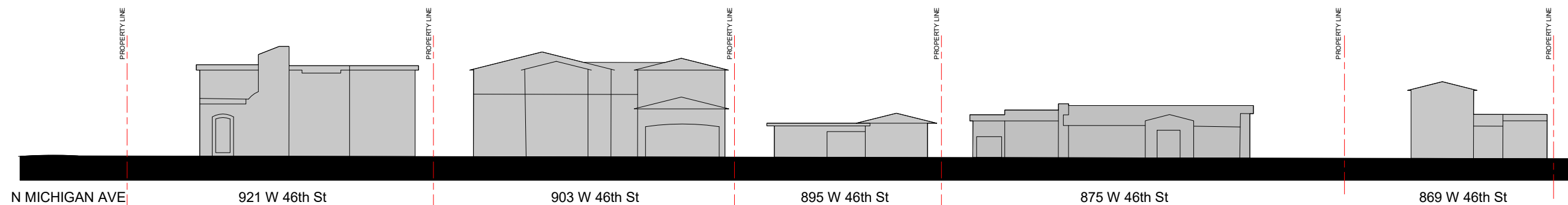
ARCHITECTURAL GROUP

copyright 2022 V3 Architectural Group, Inc.:
 All rights reserved. These drawings and specifications are instruments of service and shall remain the property of V3 Architectural Group, Inc. whether the product for which they were prepared is executed or not. They are not to be used in any manner on other projects or extensions to the project except by agreement in writing and with appropriate compensation to V3 Architectural Group, Inc.. Reproductions of specifications without the written consent of V3 Architectural Group, Inc. is prohibited.

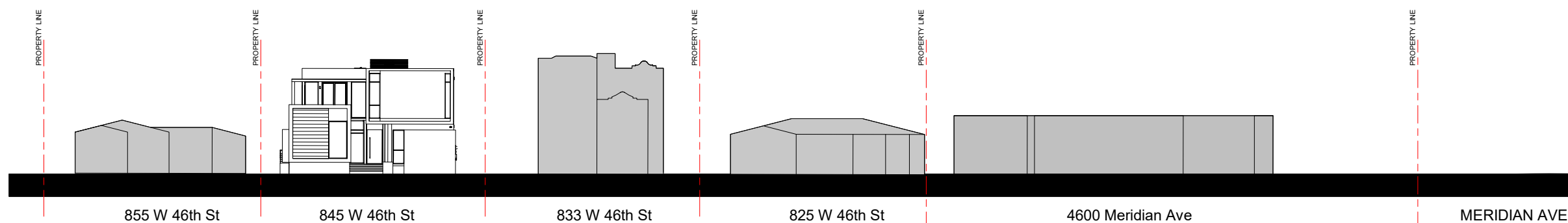


1 OVERALL CONTEXT STREET ELEVATION
1" = 50'-0"

W 46 ST



2 PARTIAL CONTEXT STREET ELEVATION
1" = 30'-0"

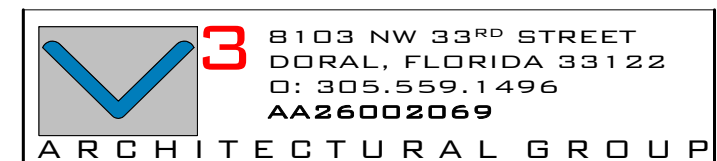


3 PARTIAL CONTEXT STREET ELEVATION 2
1" = 30'-0"

VARELA RESIDENCE
845 W 46th STREET, MIAMI BEACH, FLORIDA 33140
12.12.2022

DRB22-0895
DESIGN REVIEW BOARD - FINAL SUBMITTAL

MANUEL D. FERNANDEZ
AR 95601
CONTEXTUAL STREET ELEVATION
A 6.10



copyright 2022 V3 Architectural Group, Inc.:
All rights reserved. These drawings and specifications are instruments of service and shall remain the property of V3 Architectural Group, Inc. whether the product for which they were prepared is executed or not. They are not to be used in any manner on other projects or extensions to the project except by agreement in writing and with appropriate compensation to V3 Architectural Group, Inc.. Reproductions of specifications without the written consent of V3 Architectural Group, Inc. is prohibited.