

TREE DISPOSITION PLAN  
SCALE: 3/32"=1'-0"

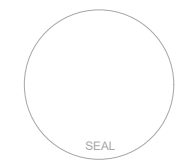


- NOTES:
1. INFORMATION ON EXISTING VEGETATION AND MITIGATION CALCULATIONS IS BASED ON ARBORIST REPORT.
  2. REFER TO SHEET TD-1.1 FOR TREE DISPOSITION LEGEND, TREE PROTECTION DETAIL AND MITIGATION CHART.
  3. REFER TO SHEET L-1.0 FOR MITIGATION PROVIDED.

VARELA RESIDENCE  
845 W 46TH STREET, MIAMI BEACH, FLORIDA 33140  
12.12.2022

DRB 22-000  
DESIGN REVIEW BOARD - FINAL SUBMITTAL

HAROLD R. HOYTE  
LAR 6666869  
TREE DISPOSITION PLAN  
TD-1.0



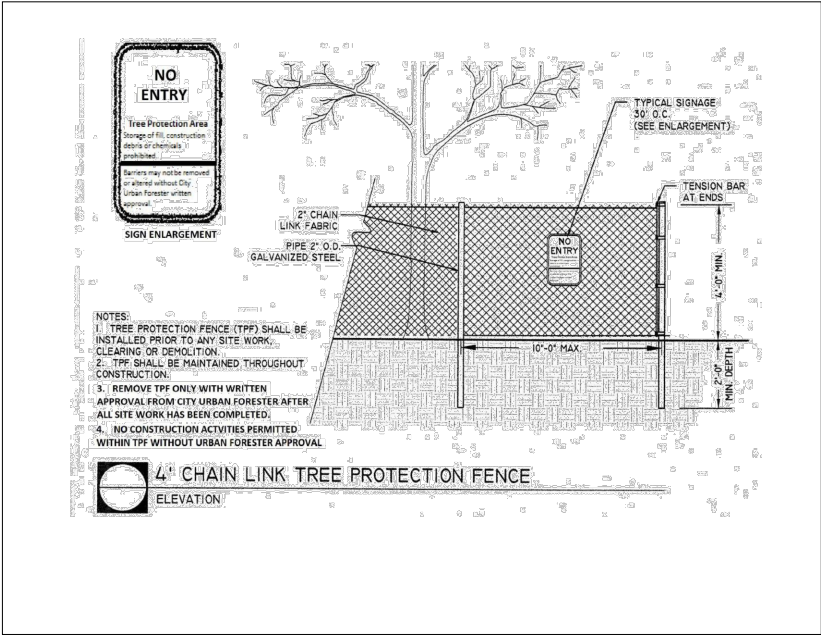
LANDSCAPE ARCHITECT  
Jerez Design Group, Inc.  
8103 NW 33RD STREET, SUITE 300  
DORAL, FLORIDA 33122  
TEL: 305.559.1496  
WWW.JEREZDESIGN.COM

8103 NW 33RD STREET  
DORAL, FLORIDA 33122  
TEL: 305.559.1496  
AA26002069  
ARCHITECTURAL GROUP

copyright 2022 V3 Architectural Group, Inc.  
All rights reserved. These drawings and specifications are instruments of service and shall remain the property of V3 Architectural Group, Inc. whether the product for which they were prepared is executed or not. They are not to be used in any manner on other projects or extensions to the project except by agreement in writing and with appropriate compensation to V3 Architectural Group, Inc.

TREE DISPOSITION LEGEND								
TREE #	SCIENTIFIC NAME	COMMON NAME	DBH (IN)	HEIGHT (FT)	SPREAD (FT)	Mitigation (Trees - DBH)	Mitigation (Palms - Ea.)	DISPOSITION
56	<i>Ptychosperma elegans</i>	Solitaire Palm	3	15	5		Too small	To Remove
57	<i>Ptychosperma elegans</i>	Solitaire Palm	3	15	5		Too small	To Remove
58	<i>Ptychosperma elegans</i>	Solitaire Palm	3	15	5		Too small	To Remove
59	<i>Ptychosperma elegans</i>	Solitaire Palm	3	15	5		Too small	To Remove
60	<i>Ptychosperma elegans</i>	Solitaire Palm	3	15	5			To Remain
61	<i>Spathodea campanulata</i>	African Tulip Tree	12	30	10			To Remain
62	<i>Veitchia merrillii</i>	Christmas Palm	4	8	5		Too small	To Remove
63	<i>Persea americana</i>	Avocado	10	35	10			To Remain
64	<i>Veitchia merrillii</i>	Christmas Palm	5	25	5		1	To Remove
65	<i>Veitchia merrillii</i>	Christmas Palm	3	8	5		Too small	To Remove
67	<i>Ficus benjamina</i>	Creeping Fig	9	35	10	9		To Remove
67	<i>Veitchia merrillii</i>	Christmas Palm	3	10	5		Too small	To Remove
68	<i>Veitchia merrillii</i>	Christmas Palm	3	25	5		1	To Remove
76	<i>Persea americana</i>	Avocado	15	30	15	15		To Remove
82	<i>Coccoloba diversifolia</i>	Pigeon Plum	5	10	5	5		To Remove
83	<i>Coccoloba diversifolia</i>	Pigeon Plum	6	10	5			To Remain
		TOTAL DBH FOR PALMS REMOVALS				29		
		TOTAL DBH FOR TREE REMOVALS					2	

Total diameter of tree(s) to be removed (sum of inches at DBH)	Total number of replacement trees required (where each replacement tree is a minimum of 2" DBH x 6' spread in canopy x 12' in height)	OR	Total number of replacement trees required (where each replacement tree is a minimum of 4" DBH x 8' spread in canopy x 16' in height)	OR	Contribution to Tree Trust Fund
2"—3"	1	or	0	or	\$1,000.00
4"—6"	2	or	1	or	\$2,000.00
7"—12"	4	or	2	or	\$4,000.00
13"—18"	6	or	3	or	\$6,000.00
19"—24"	8	or	4	or	\$8,000.00
25"—30"	10	or	5	or	\$10,000.00
31"—36"	12	or	6	or	\$12,000.00
37"—42"	14	or	7	or	\$14,000.00
43"—48"	16	or	8	or	\$16,000.00
49"—60"	20	or	10	or	\$20,000.00




TREE DISPOSITION LEGEND, TREE PROTECTION  
DETAIL & MITIGATION CHART

VARELA RESIDENCE  
845 W 46th STREET, MIAMI BEACH, FLORIDA 33140  
12.12.2022

DRB 22-000  
DESIGN REVIEW BOARD - FINAL SUBMITTAL

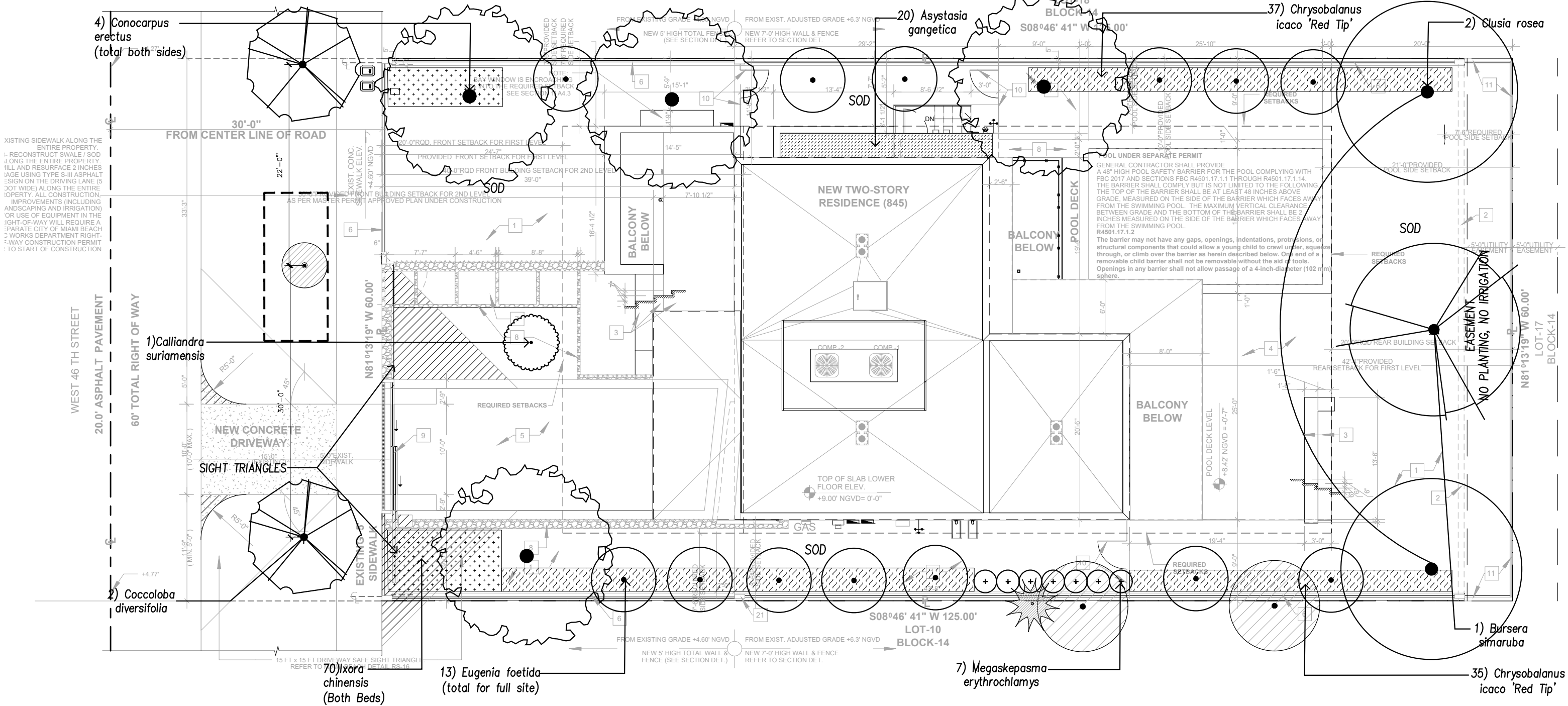
HAROLD R. HOYTE  
LAR 6666869  
TREE DISPOSITION LEGEND &  
TREE PROTECTION DETAIL  
TD-1.1





8103 NW 33<sup>RD</sup> STREET  
DORAL, FLORIDA 33122  
O: 305.559.1496  
AA26002069

ARCHITECTURAL GROUP



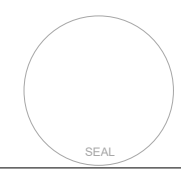
LANDSCAPE PLAN  
SCALE: 3/32"=1'-0"

- NOTES:
- 1. INFORMATION ON EXISTING VEGETATION AND MITIGATION CALCULATIONS IS BASED ON ARBORIST REPORT.
  - 2. REFER TO SHEET L-1.1 FOR ZONING LEGEND, PLANT LIST AND MITIGATION CALCULATIONS.

VARELA RESIDENCE  
845 W 46th STREET, MIAMI BEACH, FLORIDA 33140  
12.12.2022

DRB 22-000  
DESIGN REVIEW BOARD - FINAL SUBMITTAL

HAROLD R. HOYTE  
LAR 6666869  
LANDSCAPE PLAN  
L-1.0



LANDSCAPE ARCHITECT  
LANDSCAPE SUB-CONSULTANT

**Jerez Design Group, Inc.**  
JEREZ DESIGN GROUP  
JEROME JEREZ  
9130 YORK BLVD., SUITE 100  
MIAMI, FL 33172  
305.451.0701

**ARCHITECTURAL GROUP**

8103 NW 33RD STREET  
DORAL, FLORIDA 33122  
O: 305.559.1496  
AA26002069

copyright 2022 V3 Architectural Group, Inc.:  
All rights reserved. These drawings and specifications are instruments of service and shall remain the property of V3 Architectural Group, Inc. whether the product for which they were prepared is executed or not. They are not to be used in any manner on other projects or extensions to the project except by agreement in writing and with appropriate compensation to V3 Architectural Group, Inc.. Reproductions of specifications without the written consent of V3 Architectural Group, Inc. is prohibited.



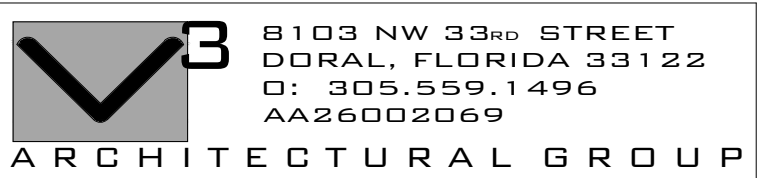
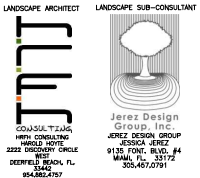
CITY OF MIAMI BEACH			
LANDSCAPE LEGEND			
INFORMATION REQUIRED TO BE PERMANENTLY AFFIXED TO PLANS			
Zoning District	RS-4	Lot Area	7,500 SF
		Acres	.17
OPEN SPACE		REQUIRED/ ALLOWED	PROVIDED
A. Square feet of required Open Space as indicated on site plan: Lot Area = 7,500 s.f. x 50 % = 3,750 s.f.		3,750 SF	5,385 SF
B. Square feet of parking lot open space required as indicated on site			
Number of parking spaces x 10 s.f. parking space =		N/A	N/A
C. Total square feet of landscaped open space required: A+B=		3,750 SF	5,385 SF
LAWN AREA CALCULATION			
A. Square feet of landscaped open space required		3,750 SF	5,385 SF
B. Maximum lawn area (sod) permitted= 50 % x 5,385 SF		2,693 SF	2,300 SF
TREES			
A. Number of trees required per lot, less existing number of trees meeting minimum requirements= 5 trees x lot - number of existing trees=		5	5
A1. As per 126-6.c, Table A 2 trees at front yard, 3 trees in back yard			
A2. Per every 1,000 SF over 6,000 SF property, another tree will be		2	2
B. % Natives required: Number of trees provided x 30% =		2	6
C. % Low maintenance / drought and salt tolerant required: Number of trees provided x 50%=		4	6
D. Street Trees (maximum average spacing of 20' o.c.) 60.00' linear feet along street divided by 20'=		3	3 (1 ex.)
E. Street tree species allowed directly beneath power lines: (maximum average spacing of 20' o.c.): linear feet along street divided by 20'=		N/A	N/A
Total Trees		10	10
SHRUBS			
A. Number of shrubs required: Sum of lot and street trees required x 12=		120	169
B. % Native shrubs required: x 50%=		60	72
LARGE SHRUBS OR SMALL TREES			
A. Number of large shrubs or small trees required: Number of required shrubs x 10%=		12	13
B. % Native large shrubs or small trees required: Number of large shrubs or small trees provided x 50%=		6	13

LANDSCAPE LEGENDS

VARELA RESIDENCE  
845 W 46th STREET, MIAMI BEACH, FLORIDA 33140  
12.12.2022

DRB 22-000  
DESIGN REVIEW BOARD - FINAL SUBMITTAL

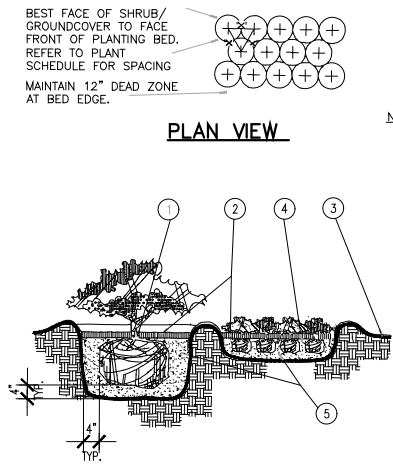
HAROLD R. HOYTE  
LAR 6666869  
LANDSCAPE LEGENDS  
L-1.1



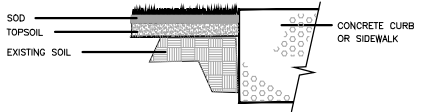
copyright 2022 V3 Architectural Group, Inc.:  
All rights reserved. These drawings and specifications are instruments of service and shall remain the property of V3 Architectural Group, Inc. whether the product for which they were prepared is executed or not. They are not to be used in any manner on other projects or extensions to the project except by agreement in writing and with appropriate compensation to V3 Architectural Group, Inc.. Reproductions of specifications without the written consent of V3 Architectural Group, Inc. is prohibited.

PLANT LIST					
Quantity	Scientific Name	Common Name	Specifications	Native	Salt Tolerance
Trees					
1	Bursera simaruba	Gumbo-limbo	16' Ht. min., 8' sp., 4" DBH., Florida #1 or better	Yes	
1	Calliandra suriamensis	Pink Powdepuff Tree	full, 15 Gal., 6' ht. x 4' sp., at time of planting, FLA #1		
2	Clusia rosea	Pitch Apple	12' Ht. min., 6' sp., 2" DBH., Florida #1 or better	Yes	
3	Conocarpus erectus	Green Buttonwood	16' Ht. min., 8' sp., 4" DBH., Florida #1 or better	Yes	High
2	Coccoloba diversifolia	Pigeon Plum	12'-14' Ht., 5'-6' sp., 3" cal., Florida #1, Standard, Street Trees	Yes	High
9	TOTAL				
Small Trees/Large Shrubs					
13	Eugenia foetida	Sympson Stopper	full, 15 Gal., 6' ht. x 4' sp., at time of planting, FLA #1	Yes	
Shrubs					
20	Aeystasia gangetica	Chinese violet	full, 3 gal, 18"OC., 12" ht., at time of planting		
72	Chrysobalanus icaco 'Red Tip'	Cocoplum red tip	full, 3 gal, 30"OC., 18" ht., at time of planting	Yes	
70	Ixora chinensis	Dwarf Ixora	full, 3 gal, 18"OC., 12" ht., at time of planting		
7	Megaskepasma erythrochlamys	Brazilian Red Cloak	full, 3 gal, 30"OC., 18" ht., at time of planting		
169	TOTAL				
Sod					
2,300 SQ FT	Stenotaphrum secundatum 'Palmetto'	St. Augustine 'Palmetto'	solid sod		

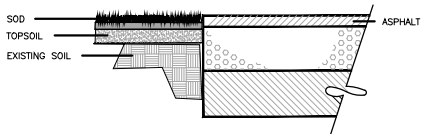
MITIGATION INFORMATION:			
Required Mitigation for 29" DBH and (2) Palms			
(12) Trees at 2" DBH or (6) Trees at 4" DBH			
MITIGATION PROVIDED:			
(4) TREES AT 4" DBH X 16' HT.			
(4) TREES AT 2" DBH X 12' HT.			
NOTES:			
* CALCULATIONS ARE BASED ON TREE REPLACEMENT CHART (CHART 46-61)			



- NOTES:**
1. TOP OF SHRUB ROOTBALLS TO BE PLANTED 1" - 2" HIGH WITH SOIL MOUNDING UP TO THE TOP OF ROOTBALL.
  2. 3" MINIMUM OF MULCH.
  3. FINISHED GRADE.
  4. PREPARED PLANTING SOIL.
  5. SCARIFY ROOTBALL SIDES AND BOTTOM.

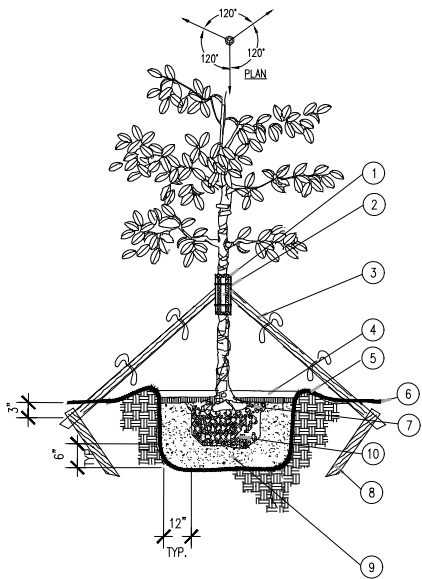


**SOD ADJACENT TO CONCRETE DETAIL**  
N.T.S.



**SOD ADJACENT TO ASPHALT DETAIL**  
N.T.S.

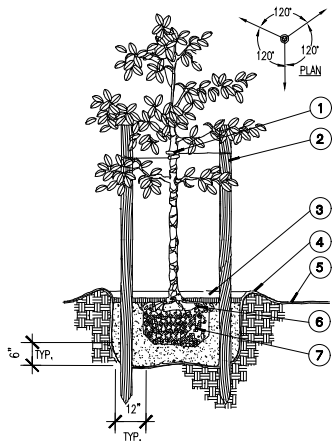
**SHRUB/GROUND COVER PLANTING DETAIL**  
N.T.S.



1. 5 LAYERS OF BURLAP TO PROTECT TRUNK
2. TWO STEEL BANDS TO SECURE BATTONS 3. FIVE 2" X 4" X 18" WOOD BATTONS
3. 3-2" X 8' LODGE POLES, NAIL (DRILL AND NAIL IF NECESSARY) TO BATTONS 2" X 4" STAKES, FLAG AT MIDPOINT AND AT BASE. (WITH ORANGE FLAGGING)
4. 3" MINIMUM OF MULCH.
5. SOIL BERM TO HOLD WATER.
6. FINISHED GRADE
7. TOP OF ROOTBALL MIN. 1" ABOVE FINISHED GRADE
8. 2" x 4" x 3' (MIN), P.T. WOOD STAKES BURIED 3" BELOW FINISHED GRADE.
9. PREPARED PLANTING SOIL
10. ROOTBALLS GREATER THAN 24" DIAMETER SHALL BE PLACED ON MOUND OF UNDISTURBED SOIL TO PREVENT SETTLING.

**NOTE:**  
CONTRACTOR SHALL ASSURE PERCOLATION OF ALL PLANTING PITS PRIOR TO INSTALLATION.

**LARGE TREE PLANTING DETAIL**  
N.T.S.



1. 3/4" ARBORVITAE BY DEEPROOT OR APPROVED EQUAL (NOTE FOR MULTI-TRUNK TREES, GUY TO STRONGEST TRUNK AT CENTER).
2. THREE 2" X 8' LODGE POLES SPACE EVENLY AROUND TREE.
3. 3" MINIMUM OF MULCH.
4. SOIL BERM TO HOLD WATER.
5. FINISHED GRADE.
6. TOP OF ROOTBALL MIN. 1" ABOVE FINISHED GRADE
7. ROOTBALLS GREATER THAN 24" DIAMETER SHALL BE PLACED ON MOUND OF UNDISTURBED SOIL TO PREVENT SETTLING ROOTBALLS SMALLER THAN 24" IN DIA. MAY SIT ON COMPACTED EARTH.

**NOTE:**  
CONTRACTOR SHALL ASSURE PERCOLATION OF ALL PLANTING PITS PRIOR TO INSTALLATION.

**SMALL TREE PLANTING DETAIL**  
N.T.S.

## LANDSCAPE GENERAL NOTES

1. All plants furnished by the Landscape Contractor unless otherwise specified shall be Florida No.1 or better, and shall be specified in Grades and Standards for Nursery Plants, Part 1 (3<sup>rd</sup> Ed., 1975) by the Florida Department of Agriculture and Consumer Services Division of the plant industry.
2. All shrubs, and groundcovers shall be guaranteed for 90 days from date of final acceptance. All trees and palms shall be guaranteed for six months from date of final acceptance.
3. Planting soil shall be weed-free, and consist of 70% clean, coarse, sharp, Lake Wales Silica Sand (alternate: Ortona or FDOT #3 coarse silica sand) and 30% Everglades muck mixed with the approved, native, soil in a ONE-ONE (1/1) ratio.
4. All planting beds to be weed and grass free. Contractor shall apply herbicide to soil as recommended by manufacturer.
5. Landscape Contractor shall locate and verify all underground utilities prior to digging.
6. All trees and standard shrub material to be staked in a good workmanlike manner. No nail staking permitted.
7. All trees shall be fertilized at installation with "Agriform Pills", 21 gram size, with a 20-10-5 formulation, (or approved equal), according to manufacturer's recommendations.
8. All plants shall be fertilized at installation with a 12-4-8 time-release fertilizer (with slow release sulphur) according to manufacturer's recommendations.
9. Cover all planting beds with a minimum of 3" layer of shredded Melaleuca, Grade B. Do not use Bald Cypress mulch.
10. Where quantities and/or species differ between the planting plan(s) and the plant list, the plan(s) shall govern.
11. No changes shall be made without the prior, written consent of the Landscape Architect and/or Owner.
12. Place and maintain protective barriers around the drip line of all trees to be retained on site. These barriers shall be easily visible and sturdily constructed. No heavy equipment or materials shall be stored within the drip line of protected trees. Any trees or palms designated to remain on-site which the City determines to have been damaged during construction shall promptly be replaced with plants of equivalent size and value as required at no cost to the City.
13. General Contractor shall submit photos to Landscape Architect for approval for all plant material 7 gallons or larger unless otherwise specified.
14. Loss or damage of branches 1" width or greater due to transport and installation are the responsibility of the GC and grounds for immediate rejection by Landscape Architect.

## LANDSCAPE DETAILS & NOTES

### VARELA RESIDENCE

845 W 46th STREET, MIAMI BEACH, FLORIDA 33140

12.12.2022

DRB 22-000

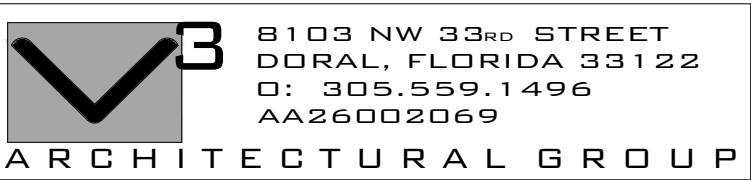
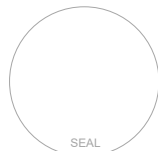
DESIGN REVIEW BOARD - FINAL SUBMITTAL

HAROLD R. HOYTE

LAR 6666869

LANDSCAPE DETAILS + NOTES

L-1.2



8103 NW 33RD STREET  
DORAL, FLORIDA 33122  
O: 305.559.1496  
AA26002069

ARCHITECTURAL GROUP

copyright 2022 V3 Architectural Group, Inc.  
All rights reserved. These drawings and specifications are instruments of service and shall remain the property of V3 Architectural Group, Inc. whether the product for which they were prepared is executed or not. They are not to be used in any manner on other projects or extensions to the project except by agreement in writing and with appropriate compensation to V3 Architectural Group, Inc.. Reproductions of specifications without the written consent of V3 Architectural Group, Inc. is prohibited.