

LIGHTING FIXTURE SCHEDULE					
TYPE	MANUFACTURER/DESCRIPTION	VOLTAGE	LAMPS	LOCATION	REMARKS
D1	RECESSED ROUND DOWNLIGHT ALPHABET LM-79 NU4-RD-20LM-40K-90-D40-UNV-DIM10-NC-MC-MC	120/277	LED	AS SHOWN	1,2
ST1	POLE TOP LIGHT FIXTURE BEGA MODEL #77142	277	LED	AS SHOWN	1,2

NOTES:

- FIXTURES SHALL BE UL OR ETL LISTED.
- MOUNTING HARDWARE SUCH AS HANGERS, BRACKETS, RAILS, YOKES, STEMS, CHAINS, ETC., SHALL BE PROVIDED AS NECESSARY TO MOUNT SPECIFIED FIXTURE.

**ELECTRICAL KEYNOTES**

1 LIGHTING SHALL BE POWERED VIA THE BUILDING EMERGENCY LIGHTING CONTROL PANEL.

**ALPHABET**

Round Downlight

NU4"

COB

oldLED

**DESCRIPTION:** The NU4 is a recessed round downlight fixture with a clear aluminum lens. The fixture is designed for use in commercial and residential applications. It features a high-quality COB LED light source and is available in multiple color temperatures and beam angles. The fixture is easy to install and maintain.

**FEATURES:** High-quality COB LED light source, clear aluminum lens, easy to install and maintain, available in multiple color temperatures and beam angles.

**INSTALLATION:** The fixture is designed for easy installation. It features a simple snap-in design that allows for quick and easy installation. The fixture is compatible with standard recessed ceiling applications.

**LED SPEC:** 10W, 120V, 277V, 4000K, 90° beam angle, 1.2 sq. ft. beam diameter.

**ALPHABET**

Pole Top Light Fixture

BEGA MODEL #77142

**DESCRIPTION:** The BEGA Pole Top Light Fixture is a modern, minimalist lighting fixture. It features a clear glass lens and a stainless steel finish. The fixture is designed for use in outdoor and semi-outdoor applications. It is easy to install and maintain.

**FEATURES:** Clear glass lens, stainless steel finish, modern design, easy to install and maintain.

**INSTALLATION:** The fixture is designed for easy installation. It features a simple pole top design that allows for quick and easy installation. The fixture is compatible with standard pole top applications.

**LED SPEC:** 10W, 277V, 4000K, 1.2 sq. ft. beam diameter.



1920 Alton Rd. Miami Beach, FL 33139

## Gensler

MAIN OFFICE  
45 Fremont Street, Suite 1500  
San Francisco, CA 94105  
United States

Tel 415.433.3700  
Fax 415.836.4599

SATELLITE OFFICE  
545 N.W. 26th Street, Suite 250  
Miami, FL 33127  
United States

Tel 305.350.7070  
Fax 305.350.7071

BILZIN SUMBERG  
Land Use  
1450 Brickell Avenue, 23rd Floor  
Miami, FL 33131  
Tel 305.350.2355

PRIME GROUP MANAGEMENT, LLC  
Management Group  
3250 NE 1st Ave, Suite 305  
Miami, FL 33137  
Tel 305.281.7383

KIMLEY HORN  
Civil, Landscape, Traffic  
8201 Pefers Road, Suite 2200  
Plantation, FL 33324  
Tel 954.535.5144

THORNTON THOMASETTI  
Structure  
80 SW 8th Street, Suite 2160  
Miami, FL 33130  
Tel 954.990.0556

CES ENGINEERING  
MEPPP  
2937 W. Cypress Creek Rd, Suite 102  
Fort Lauderdale, FL 33309  
Tel 954.990.0556

Date	Description
09/06/2022	ISSUE FOR SCHEMATIC DESIGN

Seal / Signature

# NOT FOR CONSTRUCTION

Project Name  
1920 Alton Road

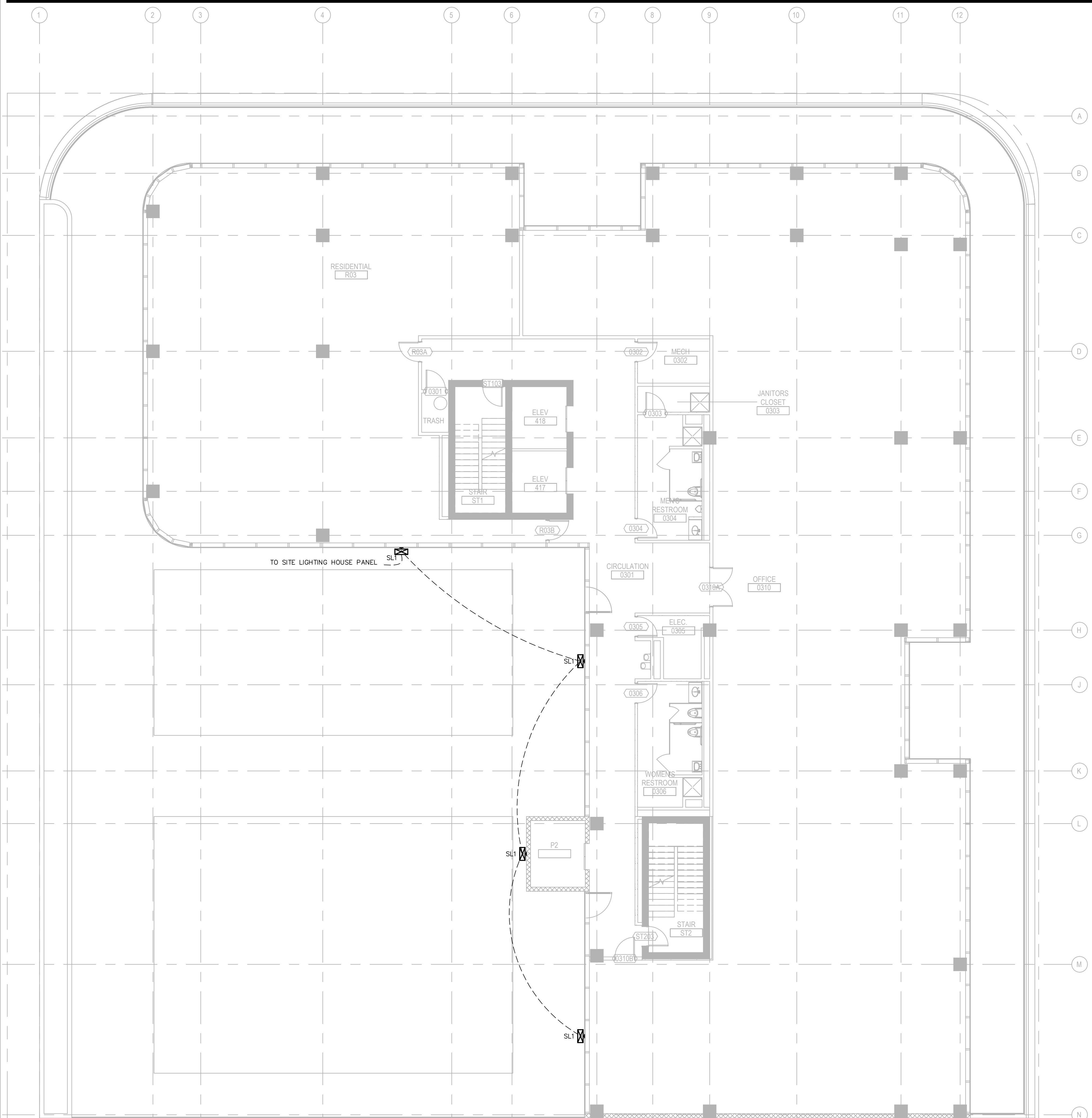
Project Number  
79.0666.000

Description  
LIGHTING PLAN - LEVEL 01

Scale  
3/32" = 1'-0"

## EL-101





LIGHTING FIXTURE SCHEDULE					
TYPE	MANUFACTURER/DESCRIPTION	VOLTAGE	LAMPS	LOCATION	REMARKS
SL1	LED WALL MOUNTED LUMINAIRE DARK BRONZE FINISH	277	---	AS SHOWN	1,2

**NOTES:**

- FIXTURES SHALL BE UL OR ETL LISTED.
- MOUNTING HARDWARE SUCH AS HANGERS, BRACKETS, RAILS, YOKES, STEMS, CHAINS, ETC., SHALL BE PROVIDED AS NECESSARY TO MOUNT SPECIFIED FIXTURE.

**D-Series Size 1 LED Wall Luminaire**

**Specifications**

Back Box (BBW, E20WC)  
Width: 15.5" (393mm) | Depth: 2.5" (63.5mm) | Height: 8.5" (216mm)

Luminaire  
Width: 15.5" (393mm) | Depth: 2.5" (63.5mm) | Height: 8.5" (216mm)

Weight: 12.5 lbs (5.7kg) | Back Box Weight: 10 lbs (4.5kg) | Luminaire Weight: 10 lbs (4.5kg)

Finish: Dark Bronze

Back Box Finish: Dark Bronze

**Introduction**

The D-Series Wall Luminaire is a light, fully integrated LED solution for building mount applications. It features a sleek, modern design and is carefully engineered to provide long-lasting, energy-efficient lighting with a variety of optical and control options for automated performance.

With an expected service life of over 20 years of nighttime use and up to 74% in energy savings over comparable 250W metal halide luminaires, the D-Series Wall is a reliable, low-maintenance lighting solution that produces sites that are exceptionally illuminated.

---

**Ordering Information**

EXAMPLE: D50W1 LED ZXC 100-40K T3M MVOLT DDBTDX

Order Code	Color	Finish	Optical	Control	Mounting	Notes
D50W1	100-40K	T3M	MVOLT	DD	BTDX	

**Performance Data**

Lumen Output

Color Temp.	Beam Spread	Beam Angle	Beam Diameter	Beam Length	Beam Area	Beam Volume
4000K	15°	3.1°	1.1"	1.1"	1.1"	1.1"

---

**Accessories**

- 1. Back Box (BBW, E20WC)
- 2. Mounting Hardware (MH, HWS, HWS-H)
- 3. Hanger Bar (HB, HBS, HBS-H)
- 4. Hanger Bar (HB, HBS, HBS-H)
- 5. Hanger Bar (HB, HBS, HBS-H)
- 6. Hanger Bar (HB, HBS, HBS-H)
- 7. Hanger Bar (HB, HBS, HBS-H)
- 8. Hanger Bar (HB, HBS, HBS-H)
- 9. Hanger Bar (HB, HBS, HBS-H)
- 10. Hanger Bar (HB, HBS, HBS-H)

**Electrical Load**

Color Temp.	Beam Spread	Beam Angle	Beam Diameter	Beam Length	Beam Area	Beam Volume
4000K	15°	3.1°	1.1"	1.1"	1.1"	1.1"

---

**Projected LED Lumen Maintenance**

Color Temp.	Beam Spread	Beam Angle	Beam Diameter	Beam Length	Beam Area	Beam Volume
4000K	15°	3.1°	1.1"	1.1"	1.1"	1.1"

**Photometric Diagrams**

---

**Options and Accessories**

- 1. Back Box (BBW, E20WC)
- 2. Mounting Hardware (MH, HWS, HWS-H)
- 3. Hanger Bar (HB, HBS, HBS-H)
- 4. Hanger Bar (HB, HBS, HBS-H)
- 5. Hanger Bar (HB, HBS, HBS-H)
- 6. Hanger Bar (HB, HBS, HBS-H)
- 7. Hanger Bar (HB, HBS, HBS-H)
- 8. Hanger Bar (HB, HBS, HBS-H)
- 9. Hanger Bar (HB, HBS, HBS-H)
- 10. Hanger Bar (HB, HBS, HBS-H)

**Features & Specifications**

**FEATURES & SPECIFICATIONS**

**INSTALLATION**

**MAINTENANCE**

**WARRANTY**



1920 Alton Rd. Miami Beach, FL 33139



MAIN OFFICE  
45 Fremont Street, Suite 1500  
San Francisco, CA 94105  
United States

SATELLITE OFFICE  
545 N.W. 26th Street, Suite 250  
Miami, FL 33127  
United States

BILZIN SUMBERG  
Land Use  
1450 Brickell Avenue, 23rd Floor  
Miami, FL 33131  
Tel 305.350.2355

PRIME GROUP MANAGEMENT, LLC  
Management Group  
3250 NE 1st Ave, Suite 305  
Miami, FL 33137  
Tel 305.281.7383

KIMLEY HORN  
Civil, Landscape, Traffic  
8201 Peters Road, Suite 2200  
Plantation, FL 33324  
Tel 954.535.1144

THORNTON THOMSETTI  
Structure  
80 SW 8th Street, Suite 2160  
Miami, FL 33130  
Tel 954.990.0556

CES ENGINEERING  
MEPF  
2937 W. Cypress Creek Rd, Suite 102  
Fort Lauderdale, FL 33309  
Tel 954.990.0556

Date	Description
09/06/2022	ISSUE FOR SCHEMATIC DESIGN

Seal / Signature

**NOT FOR CONSTRUCTION**

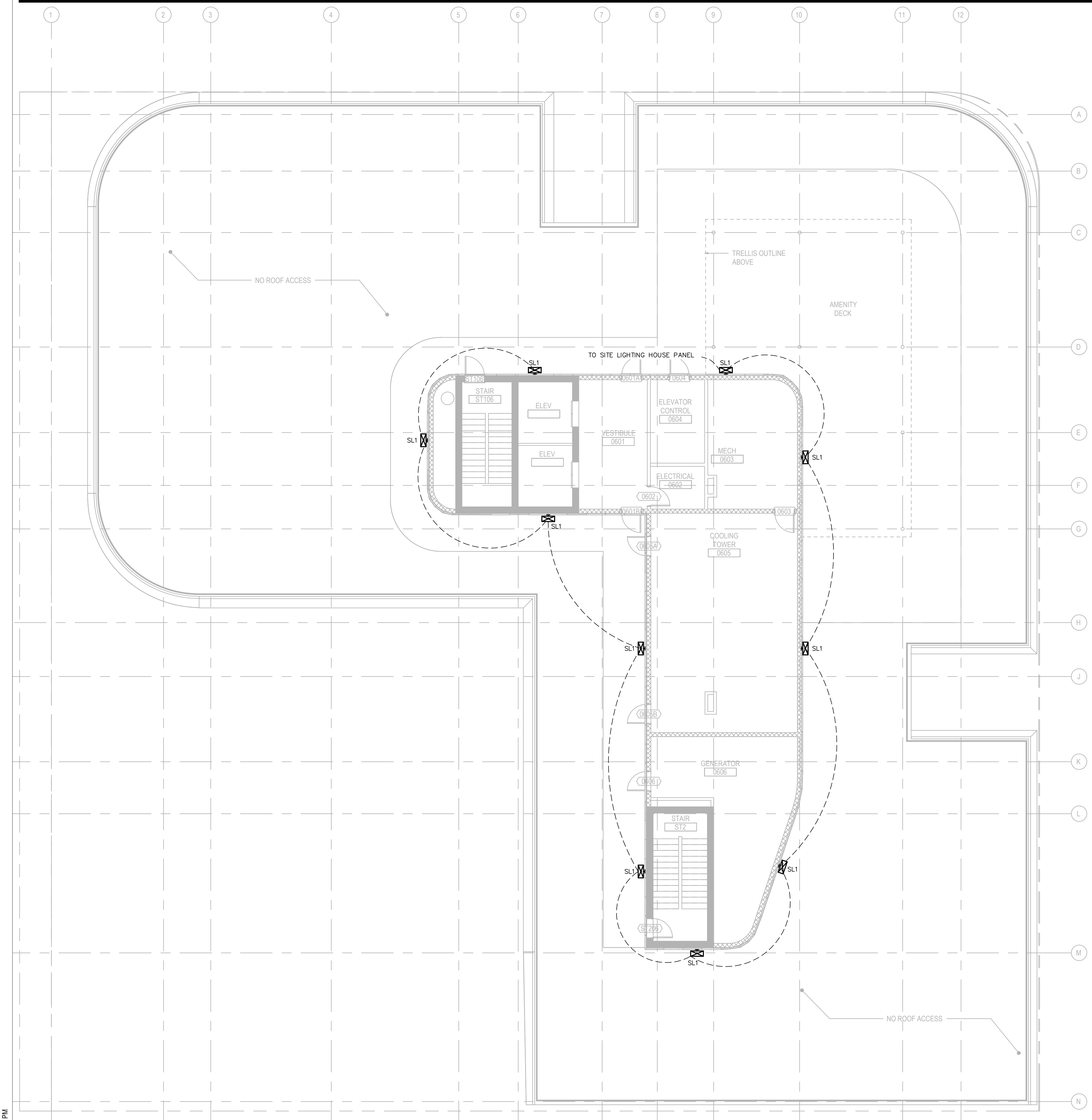
Project Name  
1920 Alton Road

Project Number  
79.0666.000

Description  
LIGHTING PLAN - LEVEL 03

Scale  
1/8" = 1'-0"

EL-103



1920 Alton Rd. Miami Beach, FL 33139

# Gensler

MAIN OFFICE  
45 Fremont Street, Suite 1500  
San Francisco, CA 94105  
United States  
Tel 415.433.3700  
Fax 415.836.4599

SATELLITE OFFICE  
545 N.W. 26th Street, Suite 250  
Miami, FL 33127  
United States  
Tel 305.350.7070  
Fax 305.350.7071

BILZIN SUMBERG  
Land Use  
1450 Brickell Avenue, 23rd Floor  
Miami, FL 33131  
Tel 305.350.2355

PRIME GROUP MANAGEMENT, LLC  
Management Group  
3250 NE 1st Ave, Suite 305  
Miami, FL 33137  
Tel 305.281.7383

KIMLEY HORN  
Civil, Landscape, Traffic  
8201 Peters Road, Suite 2200  
Plantation, FL 33324  
Tel 954.535.5144

THORNTON THOMESSETTI  
Structure  
80 SW 8th Street, Suite 2160  
Miami, FL 33130  
Tel 954.990.0556

CES ENGINEERING  
MEPPP  
2937 W. Cypress Creek Rd, Suite 102  
Fort Lauderdale, FL 33309  
Tel 954.990.0556

Date	Description
09/06/2022	ISSUE FOR SCHEMATIC DESIGN

Seal / Signature

**NOT FOR CONSTRUCTION**

Project Name  
1920 Alton Road

Project Number  
79.0666.000

Description  
LIGHTING PLAN - LEVEL 06

Scale  
1/8" = 1'-0"

**EL-106**