



FY 2023 Budget Update

Miami Beach

1



Operating Budget

2

Iguana Remediation



- Enhanced funding of \$200K included in FY 2023 Operating Budget
 - Enhances current funding level of \$32K for total of \$232K
- Short-term (in-progress)
 - Met with iguana removal services contractors to provide removal services on public property seven days a week in areas of south, mid, and north beach
 - Executed emergency purchase authority to issue purchase order to multiple vendors
 - Met with vendors to review methodology and equipment used to trap and euthanize iguanas
 - Conferenced with Cayman Island government, City of Marco Island, and City of Sanibel to discuss their success mentioned during City Commission meeting

3

3

Iguana Remediation



Long-term (in-progress)

- Conducted meetings with Fish and Wildlife Commission to discuss State guidelines and requirements
- Conducting meetings with all neighboring municipalities (including Miami-Dade County) to discuss their programs
- Conducting meetings with FIU Biological Sciences and Society of Herpetologists
- Meeting with Legal, CM, and staff to review legality (risk) of entering private property and instrument to achieve permission
- Developing RFQ with ad-hoc iguana committee for long-term remediation
- Development of dashboard for reporting

4

4

STEAM Lab Request



- One-time funding request of \$275K from PTA/PSTA for one Steam+ Lab
 - Labs needed in Miami Beach Senior High School and Feinberg Fisher
 - Each lab costs approximately \$275K for a total of \$550K
 - PTA/PTSA currently have a funding mechanism in place in their existing budget via the "Steam" line item to sustain the labs

5

5

Bicycle Pedestrian Coordinator Enhancement



- Department does not have dedicated staff with technical expertise in bicycle-pedestrian facilities; function is currently performed by traffic engineers
- Cities focusing on improving walkability and bikability typically have a dedicated personnel to assist with design, implementation, operation and oversight of bicycle/pedestrian projects
- Position (\$88K) would focus on:
 - Addressing current bicycle-pedestrian safety and accessibility issues
 - Managing delivery of projects in the Bicycle-Pedestrian Master Plan
 - Assisting with creation of Vision Zero Action Plan for Miami Beach
 - Working with FDOT and MDC DTPW to prioritize bike/ped projects
- Not recommended in FY 2023 Budget; to be re-evaluated during FY 2024 budget process

6

6

Capital Budget



7

Citywide Bridges Project



- **\$3M** included in FY 2023 Proposed Capital Budget
 - \$1.5M to rehabilitate two bridges with sufficiency rating less than 70
 - Henedon Ave. over Biscayne Pointe Waterway and 73rd St. over Tatum Waterway
 - \$1M to rehabilitate bridges with sufficiency rating over 70
 - \$500K to rehabilitate five pedestrian bridges

8

8

Capital Project Funding Opportunities

- FY 2022 reserves in General Fund & Resort Tax Fund: **\$15.0M**
- Unallocated Quality of Life funds (tourism-related): **\$6.3M**
 - North Beach: \$2.5M
 - Mid Beach: \$1.4M
 - South Beach: \$2.4M
- Seagull Hotel Street Vacation: **\$4.0M**
 - Received \$5M on August 16th; remaining \$2.4M due prior to issuance of TCO
 - \$1 million (20%) transferred to the Transportation Trust Fund
- Total of **\$25.3M** identified to date

9

9

Capital Project Funding Gap Allocations

Available Capital Funding	\$25.3M
Marine Patrol Facility	(\$3.4M)
Collins Park Arts Force Housing	(\$2.9M)
Fire Station #1 50% Grant Match	(\$2.5M)
Fire Station #1 Daycare Relocation	(\$1.8M)
Marine Patrol Transition	(\$0.5M)
Indian Creek Landscaping	(\$0.2M)
Total	\$14.0M

10

10

Upcoming Projects

Projects requiring additional funding by end of 2022

- Bayshore Park: \$7M
- Maurice Gibb Park: \$5M
- Police Headquarters Renovation: \$2.4M
- 72nd Street Complex: \$24M to \$47M

11

11

Bayshore Park Project

- Current budget = \$26.5M
 - Pending DEP grant for \$3.0M; notice of award in December
- Estimated cost of \$33.5M
- Current funding gap estimated at \$7M (without grant)
 - Opportunity to realign \$6M of stormwater funds from Central Bayshore South project to reduce gap to \$1M
- ITB issued and bids due in October
- Groundbreaking in Spring 2023 and construction to last approximately 2 years

12

12

Maurice Gibb Park Project



- Current budget = \$11.5M; includes FIND grant of \$1.2M
- Estimated cost of \$16.5M
- Current funding gap estimated at \$5M
- ITB issued and bids due in October
- Groundbreaking in early 2023 and construction completion by Fall 2024
 - Construction of Marine Patrol Facility anticipated to commence by Fall 2024

13

13

Police Headquarters Project



- Current budget = \$12.6M
- Estimated cost of \$15M
- Current funding gap estimated at \$2.4M
- ITB has been issued and bids are due in October
- Groundbreaking in January 2023 and construction to last 18-24 months

14

14

72nd Street Complex Project



- Current approved budget = \$102M
- City has been negotiating with The Haskell Company (design-builder)
- Previous design-builder proposal \$85M (design-construction)
- In July 2022, the design-builder advised design and construction costs have increased to:
 - \$101M price today without future escalation
 - \$106M to \$126M range when considering future inflation risk
- Total range of estimated adjusted amount is \$126M to \$149M including proposed contract price and all City cost allocations

15

15

72nd Street Complex Project



- Current funding gap range of \$24M to \$47M
- Procurement decision points
 - Identify funding to close gap to award design & construction contract
 - Terminate negotiations with top ranked bidder and negotiate with 2nd ranked bidder
 - Reject all bids and begin new procurement process

16

16

Flamingo Park Slow Streets 2.0



- First implemented in Flamingo Park neighborhood during COVID-19 pandemic
- Increased bike and pedestrian trips and reduced vehicular speeding
- Currently pursuing Slow Streets 2.0 (proposed budget enhancement)
 - Option 1 - \$1.2 million
 - Option 2 - \$2.7 million
- Design and implementation subject to budget approval, City Commission approval of final plan, and County permit approval

Slow Streets 2.0 Toolkit



17

17

Mid-Beach Slow Streets



- Exploring potential expansion to neighborhoods in Mid-Beach
- StreetPlans Collaborative currently conducting preliminary feasibility analysis given existing and proposed neighborhood traffic calming projects

18

18

Capital Project Funding Opportunities



- Transportation Capital Initiative Project*: **\$36.1M**

Fund	\$	\$
Concurrency Mitigation	\$5.2M	Set aside for the City's grant match for the Julia Tuttle Bus Rapid Transit project
Resort Tax	\$9.9M	Tourism-related expenditures only
Non-TIF RDA	\$8.0M	RDA only
Anchor Garage	\$7.0M	RDA only
Anchor Shops	\$6.0M	RDA only
Total \$36.1M		

* Designated by Resolution # 2017-29939

19

19



Thanks!

20



Request: One Time Funding for 2 Steam+ Labs for Miami Beach Senior High School and Miami Beach Feinberg Fisher K-8.

Background: Currently the City of Miami Beach funds the Steam+ Program at our MB Feeder Pattern Schools. Based on this amazing City Initiative, the MBNMS PTA/PTSA funded the first ever Steam Lab and most recently the Innovation center (Cost approximately \$200,000). The impact of these physically collaborative spaces has had a direct affect at the school site and in turn opened up a world of educational opportunities for students. The existing labs impact is reflected in many ways; Steam Gold Designation, 6th place in the World Robotics Championship, and the school being designated as an “A” school. With that said, currently there is no path for these students once they depart middle school, as there is no such space currently at Miami Beach High School, nor is there a lab for MB FFK-8 to keep on pace with their peers at MBNMS.

The feeder pattern PTA/PTSA’s aligned and funded a comprehensive study encompassing the following stakeholders: Steam curriculum experts, students, and MDCPS leadership. The goal was to develop world class labs, that could impact as many students as possible and revolutionize our feeder pattern schools and most importantly the trajectory of our students lives.

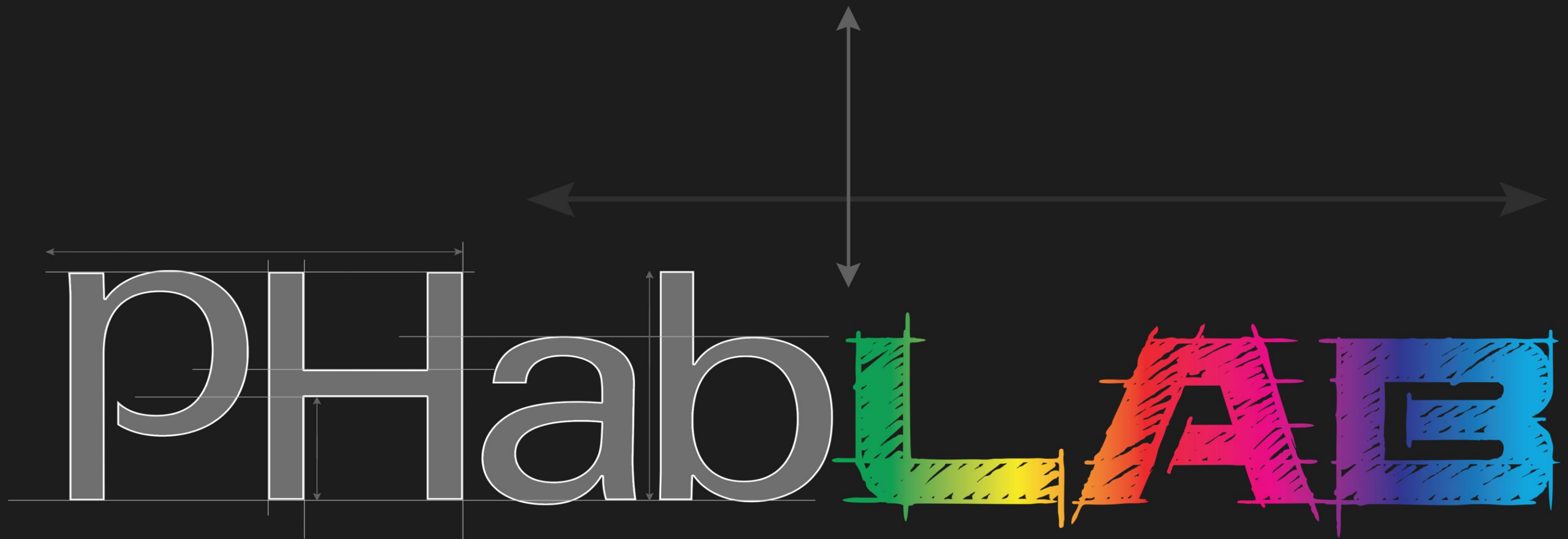
Impact Numbers:

School Name	Student Impact
Miami Beach Senior High	2100
Miami Beach FFK-8	720

Shared Responsibility/Sustainability: The PTA/PTSA is looking at a one-time contribution from the City of Miami Beach for 2 Steam Labs (see attached pdf for Visual Concept of Labs) at the cost of \$550, 000.

PTA/PTSA currently have a funding mechanism in place in their existing budget(s) via the “Steam” line item to sustain the labs. The respective PTA/PTSA will budget per annum in perpetuity a minimum of 5% of the total one time contribution of the CMB to sustain the lab’s equipment.

MDCPS will be responsible for the IT infrastructure, curriculum deployment and any capital needs to outfit the existing space to accommodate the donation from the City of Miami Beach.



Exclusively For:
Miami Beach Senior High



Due to supply, robo-reel units
may vary in color selection
and/or model type.



Due to supply, robo-reel units may vary in color selection and/or model type.





*Due to supply, robo-reel units
may vary in color selection
and/or model type.*

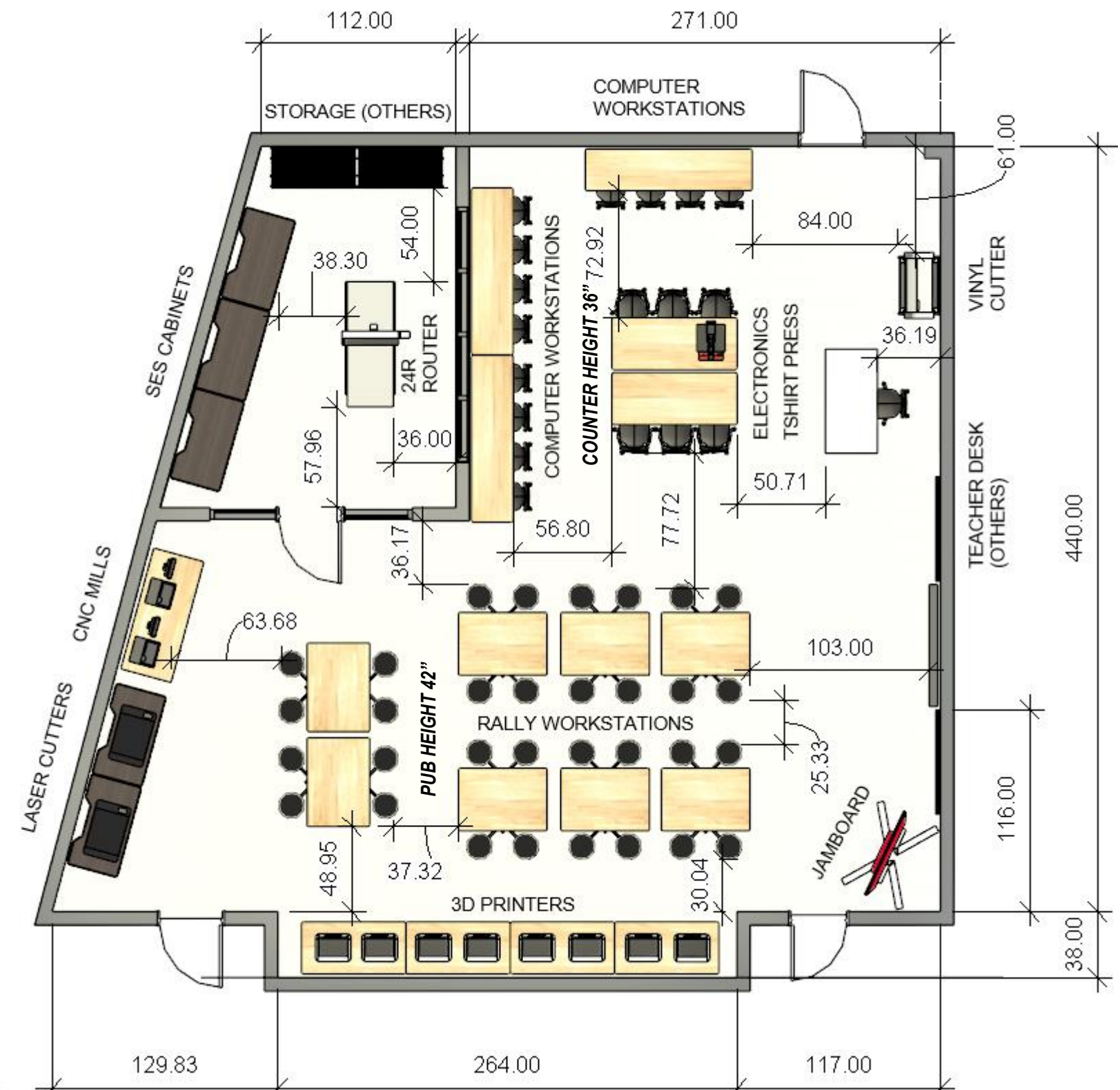






OPTION ONE – BUTCHER TOPS

SEATING CAPACITY: 50 + 1 TEACHER



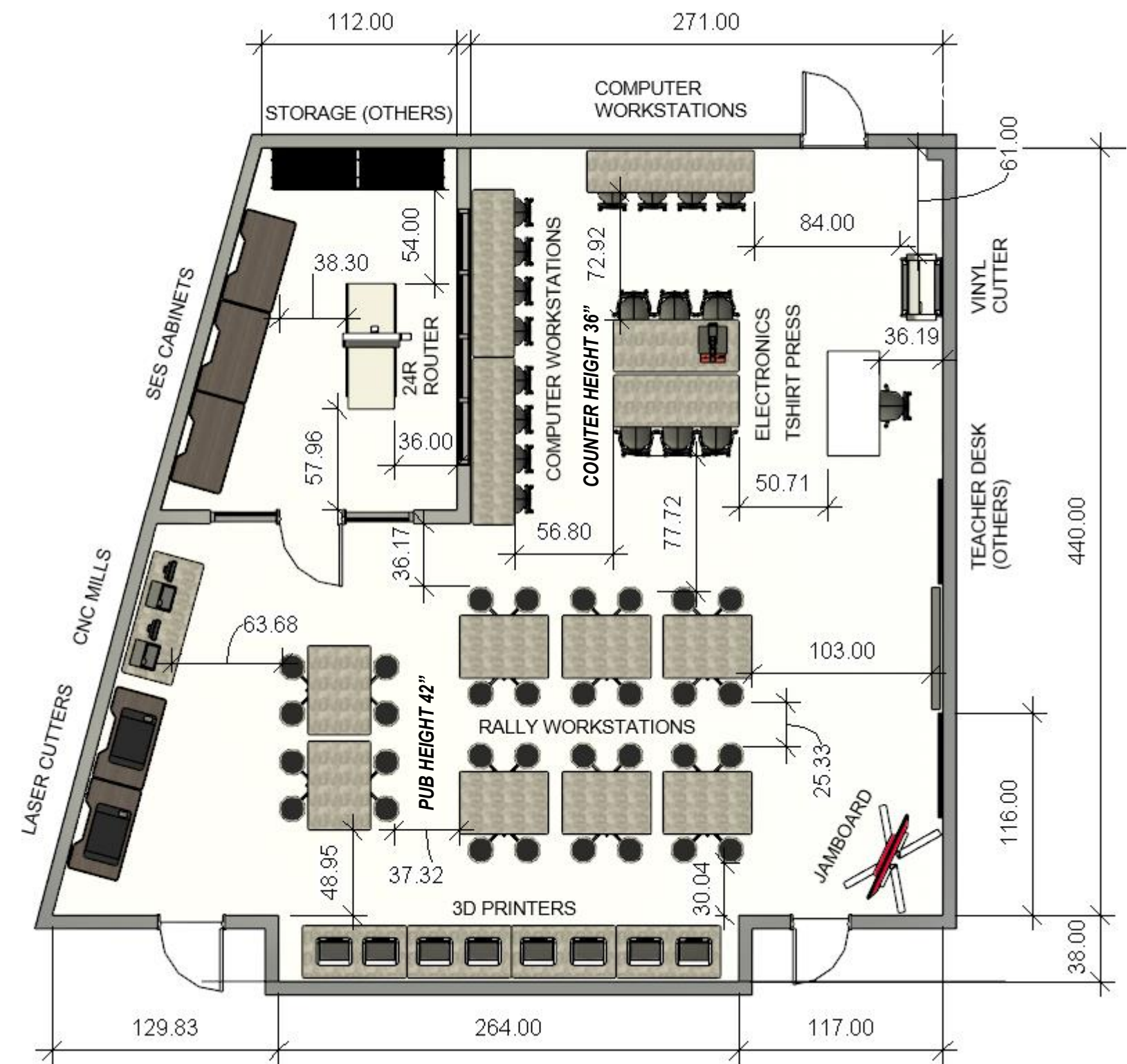
* Computers and CAD software provided by others. Teacher Desk, Wire Storage Racks provided by others.





OPTION TWO – LAMINATE TOPS

SEATING CAPACITY: 50 + 1 TEACHER



* Computers and CAD software provided by others. Teacher Desk, Wire Storage Racks provided by others.





SES CABINET

Laminate Top: Wilsonart Asian Night

Edge: Black

Unit Metal: Dk Gray

Doors/Drawers Metal: Glossy Carmine Red

Locking casters

Qty. 5



**BUTCHER BLOCK SHOWN AS
ALTERNATE OPTION (OPTION ONE)**



INSPIRATION TABLE

Various sizes

Laminate: WA Pewter Brush

Edgeguard: Black

Frame: Silver

Locking Casters



METHOD TASK CHAIR & STOOL

Shell: Black, Frame: Chrome

Qty. Chair: 13

Qty. Stool: 6



LAMINATE

Wilsonart Pewter Brush

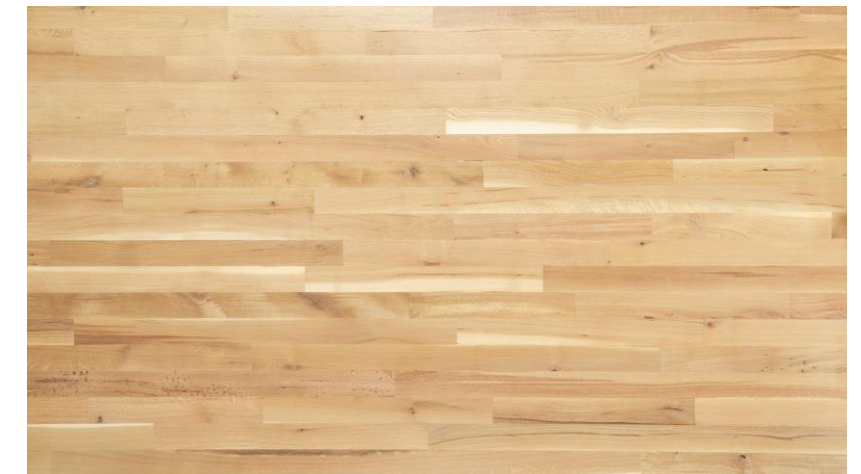
4779-60



LAMINATE

Wilsonart Asian Night

7949-38



BUTCHER TOP





DREMEL DIGILAB 3D45 3D PRINTER

Qty. 8



FULL SPECTRUM MUSE LASER

Qty. 2



TORMACH xsTECH CNC MILL

Qty. 2



RETRACTABLE POWER

Qty. 6

**Confirm power outlet locations in ceiling. PH does not perform electrical services.*

***Due to supply, robo-reel units may vary in color selection and/or model type.*



PRISM 28" VINYL CUTTER

Size: 28"W x 36"H

With stand and catch basket

Qty. 1



GOOGLE JAMBOARD

Color: Red

Qty. 1



CLAMSHELL HEAT PRESS

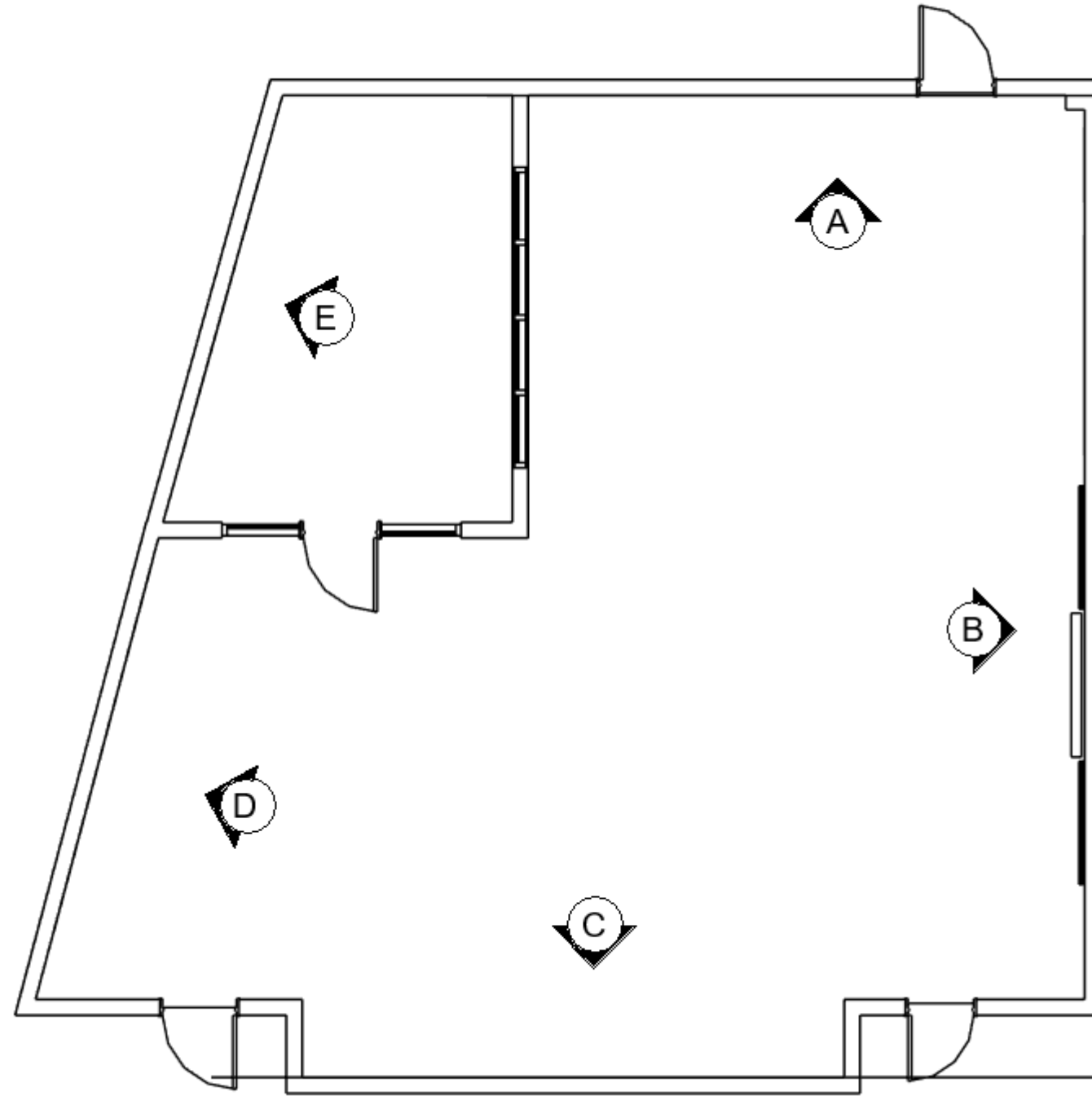
Qty. 1



TORMACH 24R CNC ROUTER

Qty. 1





ELEVATION PLAN



**School to remove existing markerboard from this wall and repair wall prior to install.*
***Verify size and location of door – estimated per photos.*



A

INTERIOR ELEVATION A

Miami Beach Senior High School - PHabLab

Computer Stations – Existing Computers
Verify Amount of Space Needed Per Student

Vinyl Cutter



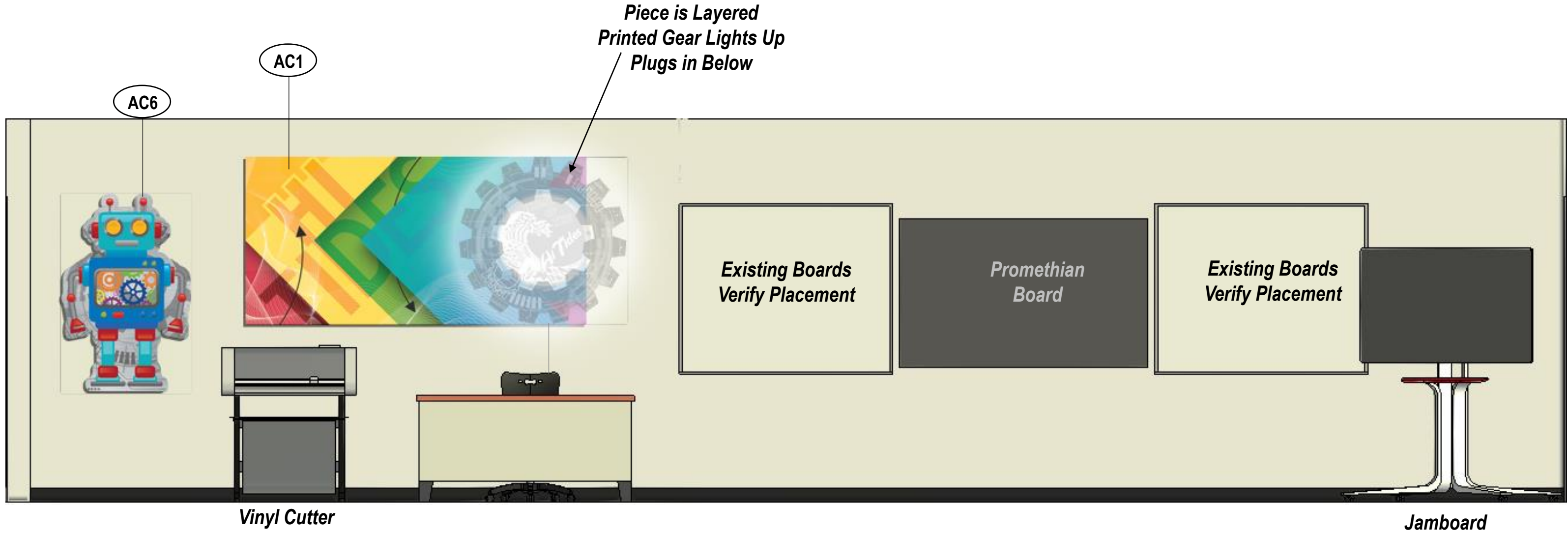


BP1
PL-GR-VIVID-BP1
 (FIRST HALF)
 Direct Print on 6mm White PVC.
 Wall mounted with snap caps.
 Overall size: 262"W x 104"H



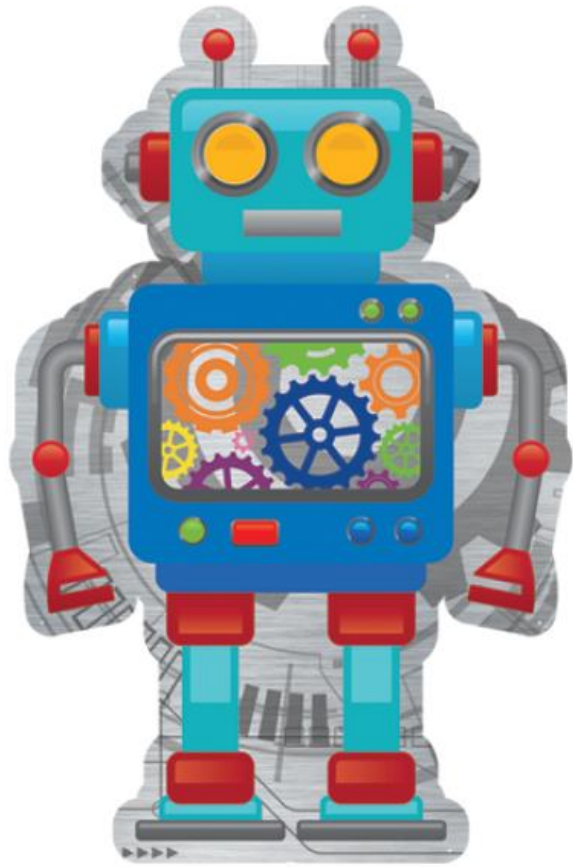
BP4
PL-GR-VIVID-BP4
 Direct print on 6mm clear acrylic.
 Cut to shape.
 Wall mounted with 1.5" silver standoffs.
 Overall size: 47" Diameter

**School to repair damage to wall and restore surface to Level 5 finish.*

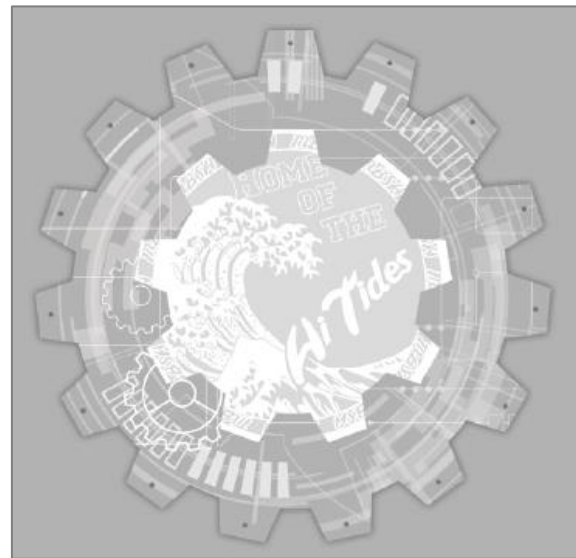


B INTERIOR ELEVATION B
Miami Beach Senior High School - PHabLab





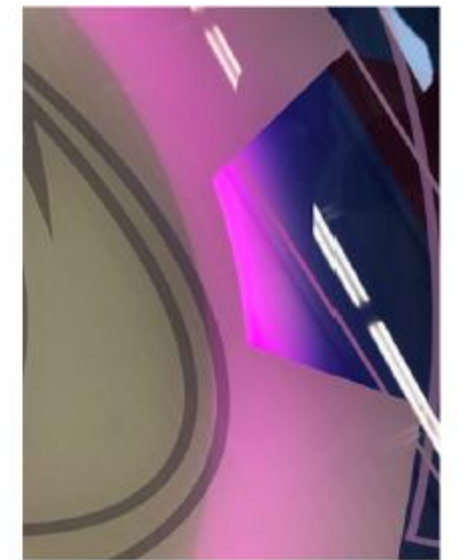
AC6
PL-GR-VIVID-AC6
 Direct print on 3mm silver dibond.
 Cut to shape.
 Wall mounted w/ aluminum screw caps.
 Overall size: 37"W x 56.5"H



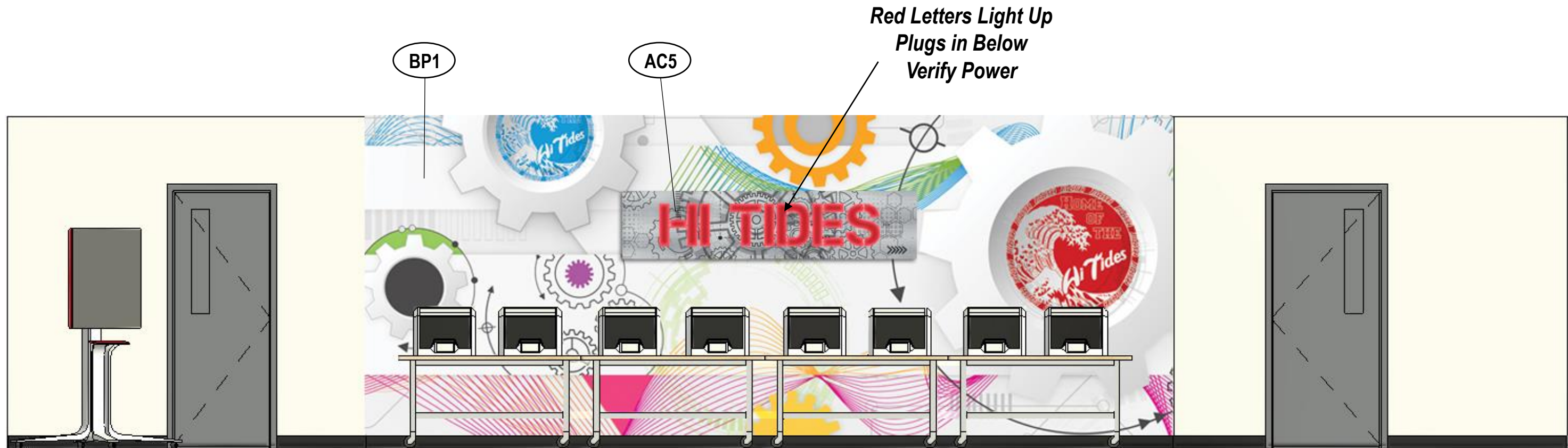
AC1
PL-GR-VIVID-AC1

Bottom Layer (Rectangle)
 Direct print on 6mm white PVC.
 Wall mounted w/ snap caps.
 Overall size: 95"W x 47"H

Top Layer (Gear)
 Second surface print on 6mm clear acrylic.
 Cut to shape.
 Back light RGB LED
 UL certified.
 Wall mounted w/ 1.5" silver standoffs.
 Overall size: 47" Diameter

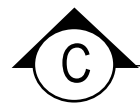


**EXAMPLE OF LIGHT-UP FEATURE
 FROM PREVIOUS INSTALLATION**



Jamboard

3D Printers



INTERIOR ELEVATION C

Miami Beach Senior High School - PHabLab





AC5
PL-GR-VIVID-AC5
 Direct Print on 3mm silver dibond.
 Printed acrylic backer for back lite color
 UL certified, Wall mounted TBD
 Overall size: 95"W x 22"H



BP1
PL-GR-VIVID-BP1
 (SECOND HALF)
 Direct Print on 6mm White PVC.
 Wall mounted with snap caps.
 Overall size: 271"W x 104"H





INTERIOR ELEVATION D

Miami Beach Senior High School - PHabLab

SES Cabinets W/ Laser Cutters

Desktop CNC Mills





BP2

PL-GR-VIVID-BP2

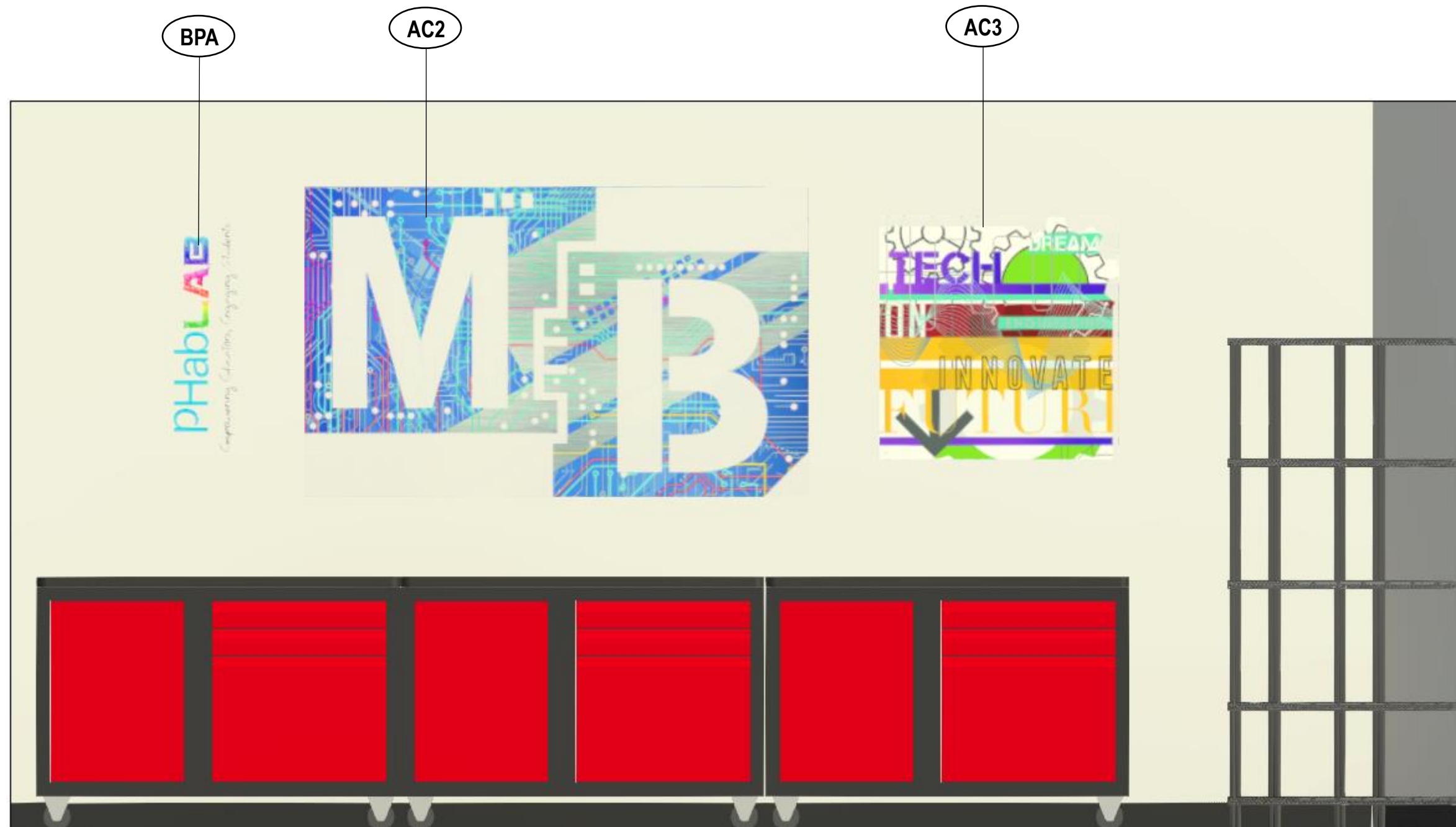
Direct print on 6mm white PVC.

Cut to shape.

Wall mounted w/ snap caps.

Overall size: 190"W x 47"H





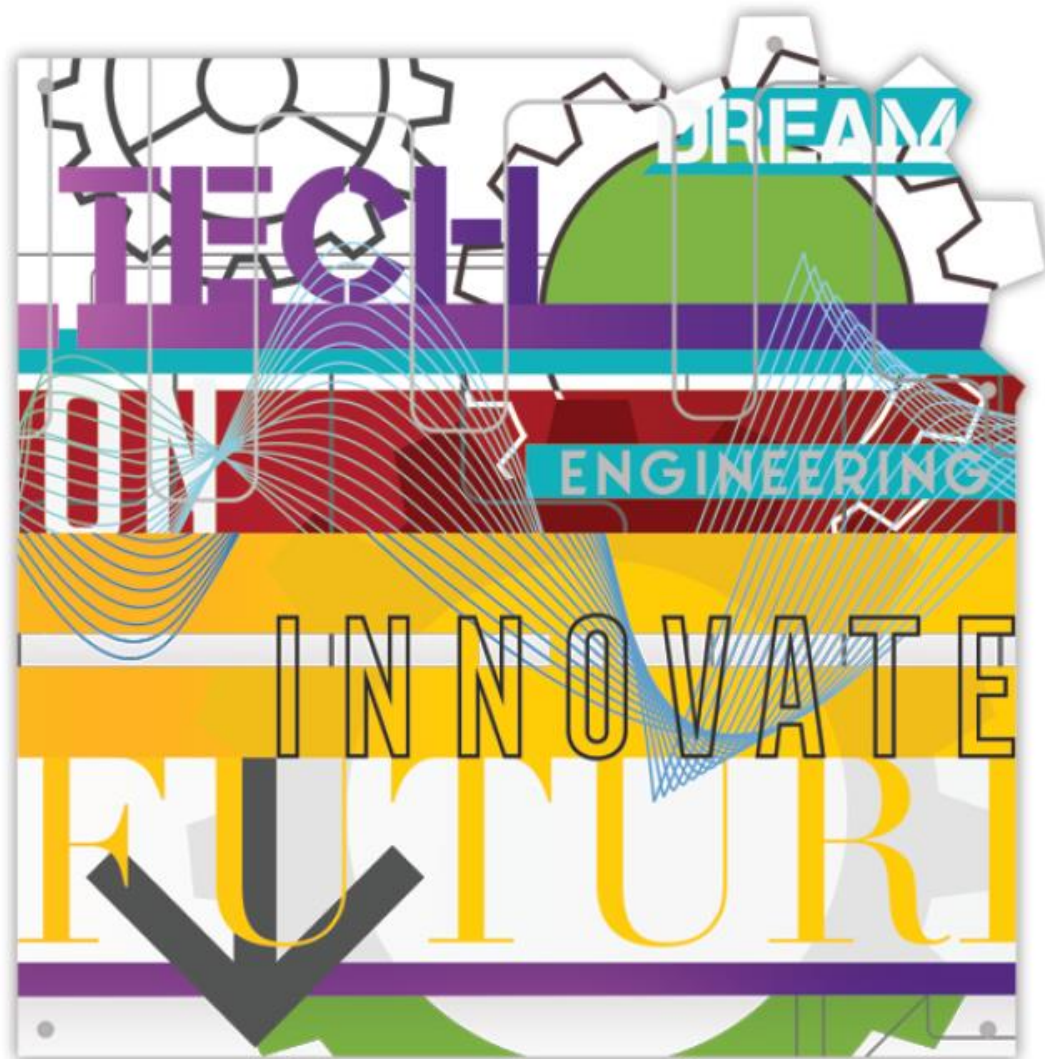
INTERIOR ELEVATION E

Miami Beach Senior High School - PHabLab

SES Cabinets

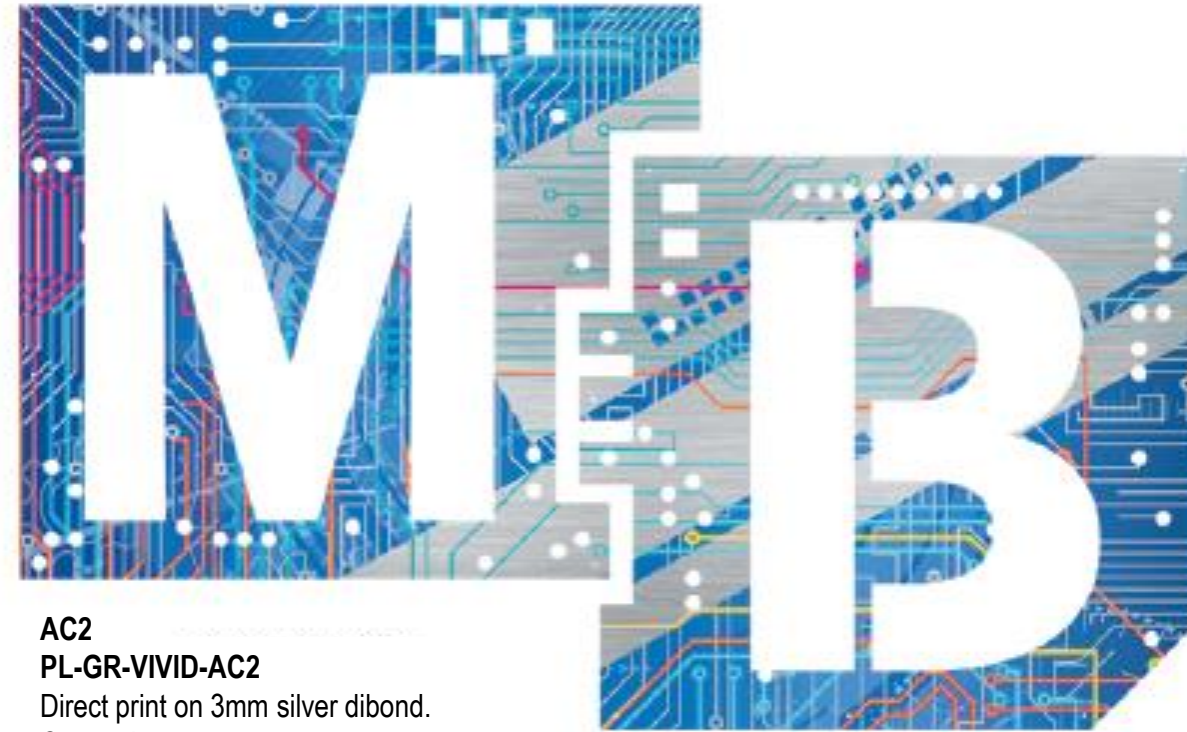
*Wire Shelves
by Others*





AC3
PL-GR-VIVID-AC3
 Direct print on 6mm clear acrylic.
 Cut to shape.
 Wall mounted w/ 1.5" silver standoffs.

Overall size: 36"W x 36"H

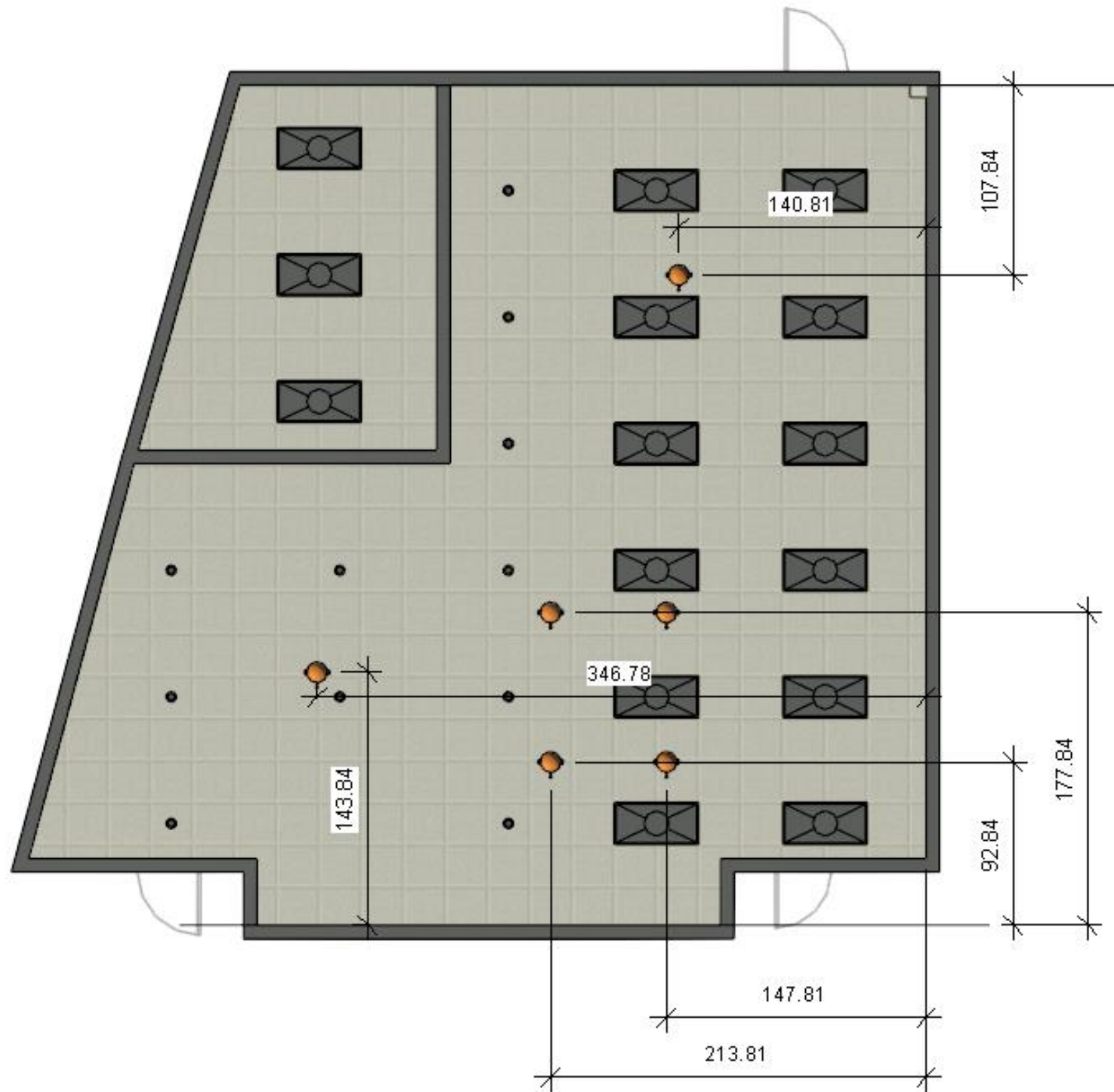


AC2
PL-GR-VIVID-AC2
 Direct print on 3mm silver dibond.
 Cut to shape.
 Wall mounted with aluminum screw caps.
 Overall size each piece: 36"W x 36"H



BPA
PL-GR-BRAND-BPA
 Second Surface Print on 6mm Clear Acrylic
 Wall Mounted w/Aluminum Screw Caps

Overall size: 36"W x 13.75"H



*Confirm specified locations against ceiling obstructions.
Provide placements of electrical outlets (one outlet needed per unit).
PH does not perform construction or electrical services.*



PRELIM: 12.18.19
REVISIONS #1: 12.19.19
REVISIONS #2: 12.20.19
REVISIONS #3: 02.26.20
REVISIONS #4: 03.03.20
REVISIONS #5: 04.08.20
REVISIONS #6: 04.09.20
REVISIONS #7: 03.11.22

- ADD Clamshell T shirt press
- CHANGE lasers to current Muse Full Spectrum model.
- Verify current available of all items and finishes.

REVISIONS #8: 05.26.22

- New room – transfer all items to new space and ensure fit.
- Reduce size of AC1 (now 47” height)

FINAL BOOK APPROVAL

*Signing below indicates all project furniture quantities, colors, laminates, paint, graphic content & all other design elements have been reviewed and will receive no additional revisions. Any revisions requested beyond final book approval will incur additional charges and extended lead times.

**Client indicates an understanding that materials, colors, and artwork in this book are digital representations only and there may be variation in appearance due to screen calibration and/or color print anomalies.

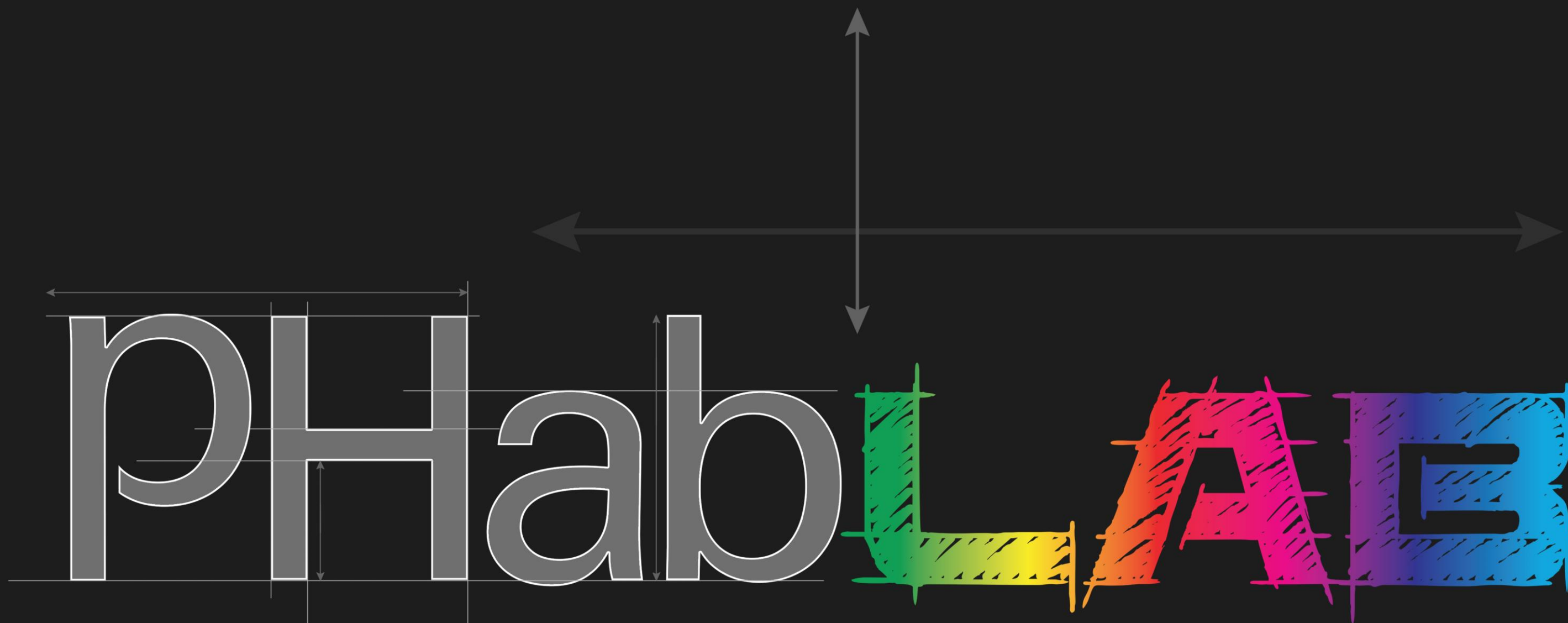
Print Name:_____ Title:_____

Signature:_____ Date:_____

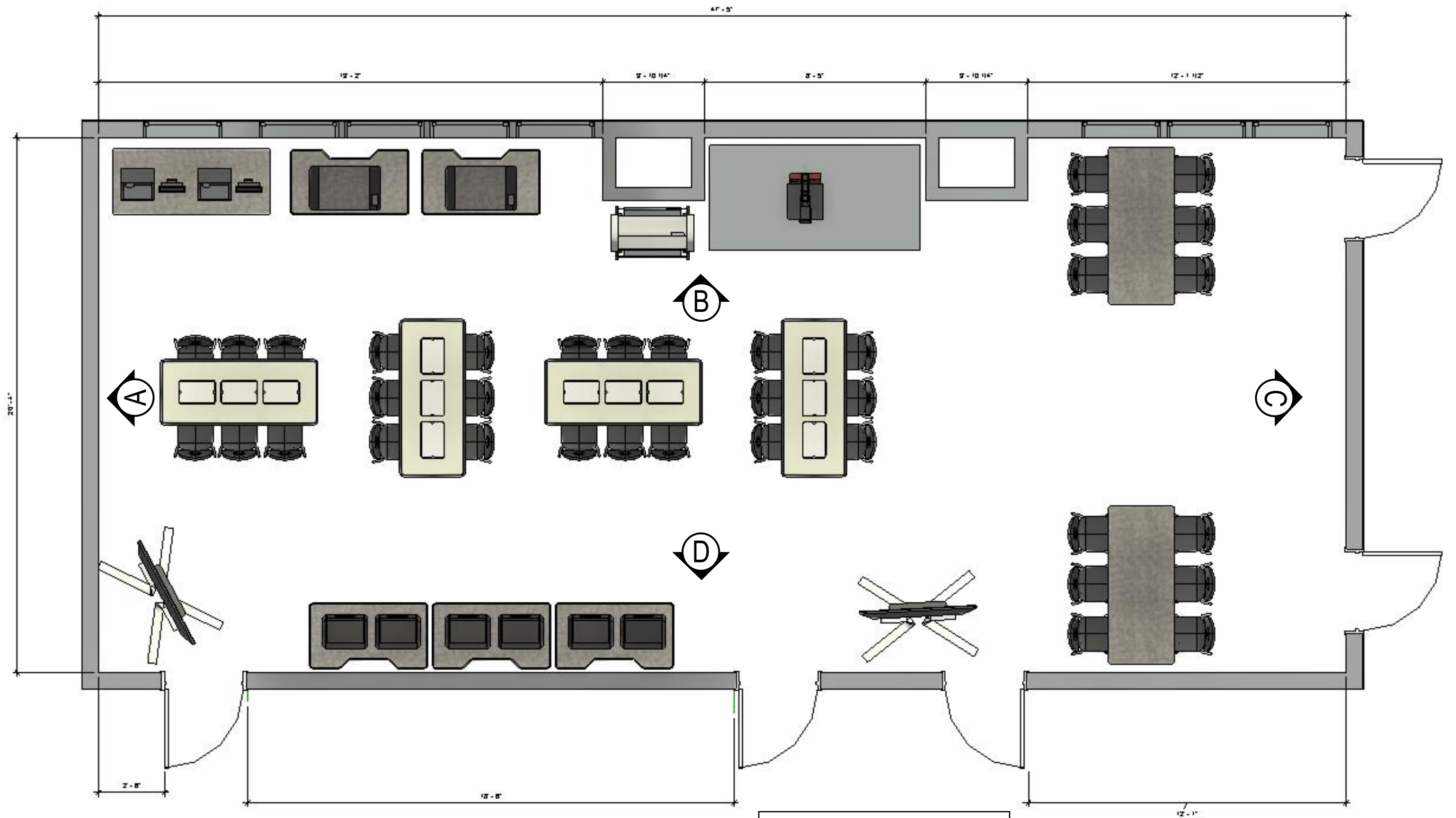


*images for visual reference only, actual appearance may vary.
**Surface finishes and upholsteries are digital representations only and may not match actual samples due to screen calibration or color print/scan anomalies.

PROJECT NAME: MIAMI BEACH SENIOR HIGH
LOCATION: MIAMI BEACH, FL
DATE: 05.26.22 – SB/G



Exclusively For:
Fienberg Fisher K-8
Miami Beach



CAPACITY SHOWN: 36



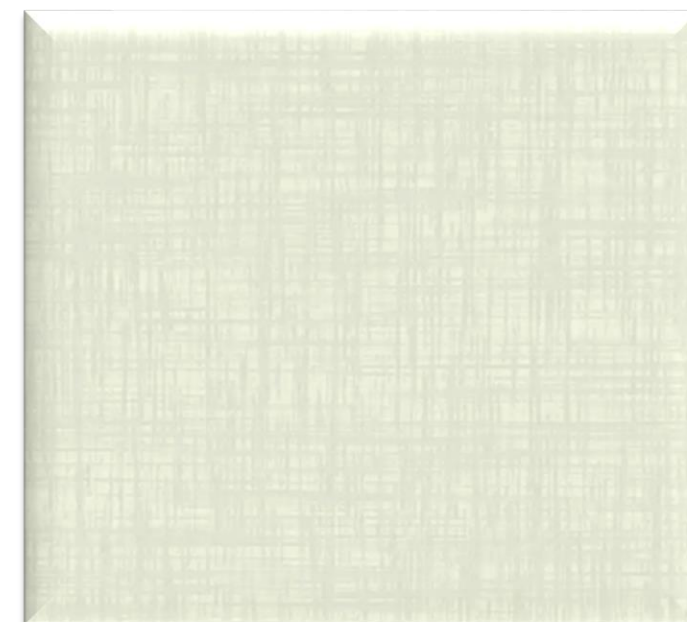
DISCOVERY TABLE
 29x30x72
 Laminate: WA Magnolia
 Edgeguard: Black
 Frame: Silver
 Locking Casters
 Bin Color: Blue
 Qty. 4



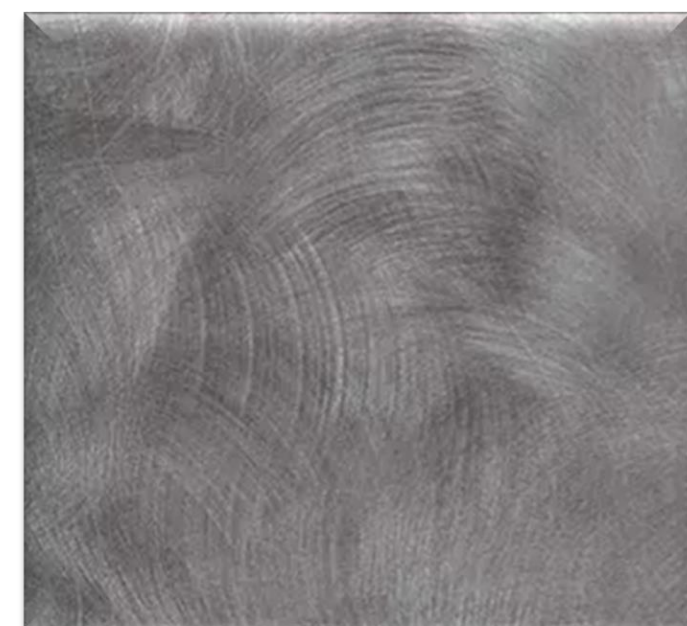
METHOD CHAIR 18"
 Shell: Black, Frame: Chrome
 Chair: Qty. 36
 METHOD-18



INSPIRATION TABLE
 30x30x72
 Laminate: WA Pewter Brush
 Edgeguard: Black
 Frame: Silver
 Locking Casters
 Qty. 2



LAMINATE
 Wilsonart Magnolia
 5012-60



LAMINATE
 Wilsonart Pewter Brush
 4779-60





Dremel 3D45 3D Printer
Item Number: PL-EQ-3D45-01
Qty:6



Tormach XS Tech Router Desktop CNC
Item Number: PL-EQ-XSTECHMILL
Qty:2



Google Jamboard
Color: Red
Qty. 2



**Full Spectrum Laser™ Muse 3D40 Laser Kit
w/BOFA Filtration**
Item Number: PL-EQ-MUSE3D40-BASE
Qty:2

Items Included
Muse 3D40
Rotary Riser (for curved surfaces)
BOFA Filter (AD350)
Filter Hose Kit





**US Cutter P28 Vinyl Cutter Stand
(Included in PL-EQ-P28KITUS)**

Item Number: PL-EQ-STANDUS

Qty:1



**US Cutter 15" x 15" Clamshell Heat Press
(Included in PL-EQ-TPRESSKITUS)**

Item Number: PL-EQ-CLAMPRESSUS

Qty:1

SES CABINET

Laminate Top: Wilsonart Pewter Brush

Edge: Black

Unit Metal: Black

Doors/Drawers Metal: Frost White

Locking casters

Qty. 5









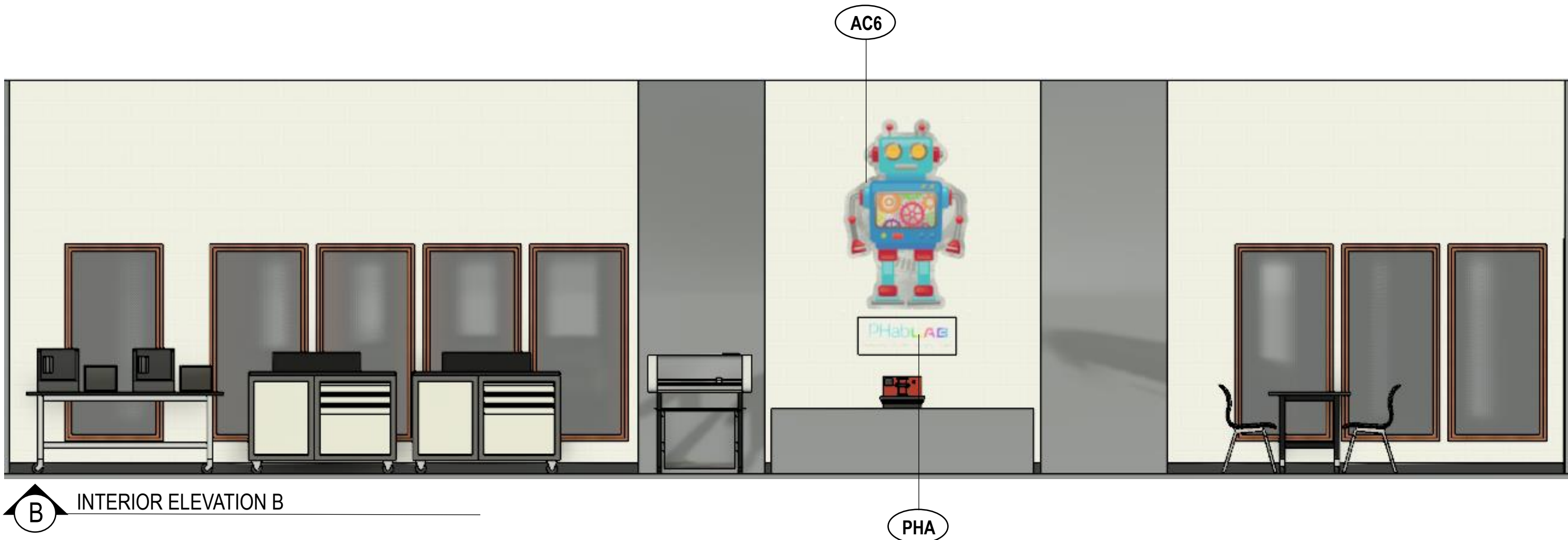
A INTERIOR ELEVATION A

**Shown with Existing Shelving Removed (By School) Mural is Existing*

**Note that walls will need to be repaired and cleaned prior to artwork installation*

***Elevation details need to be confirmed to ensure any existing conduit and/or wall obstacles will not interfere with art & equipment installation.*

NOTE: School is responsible to remove unwanted wall-hung items and patch walls prior to painting.



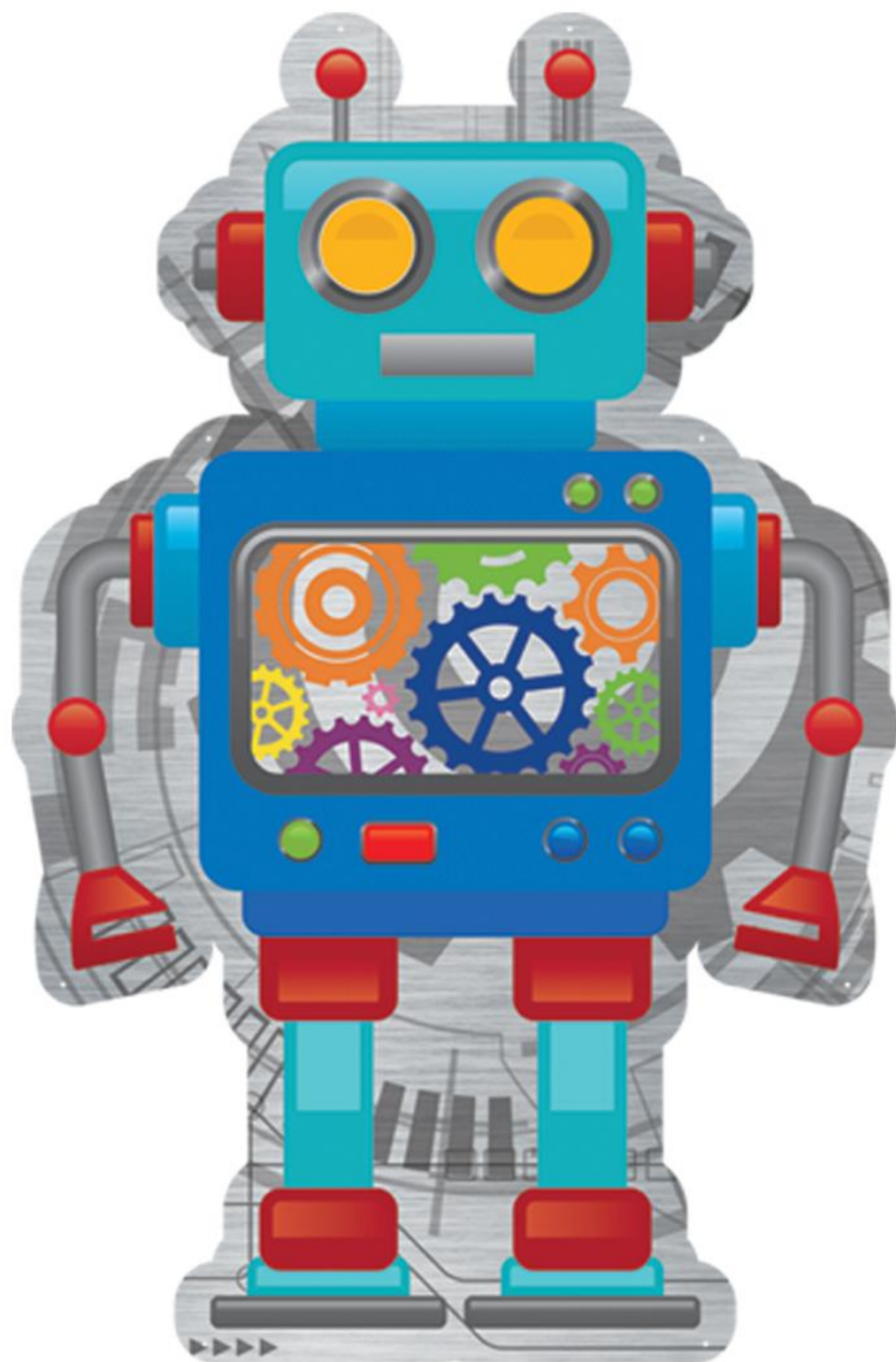
B INTERIOR ELEVATION B

**Shown with Existing Shelving Removed (By School)*

**Note that walls will need to be repaired and cleaned prior to artwork installation*

***Elevation details need to be confirmed to ensure any existing conduit and/or wall obstacles will not interfere with art & equipment installation.*

NOTE: School is responsible to remove unwanted wall-hung items and patch walls prior to painting.



AC6
PL-GR-VIVID-AC6
 Direct Print on 3mm Silver DiBond
 Cut to Shape
 Mounted to Wall w/Aluminum Screw Caps

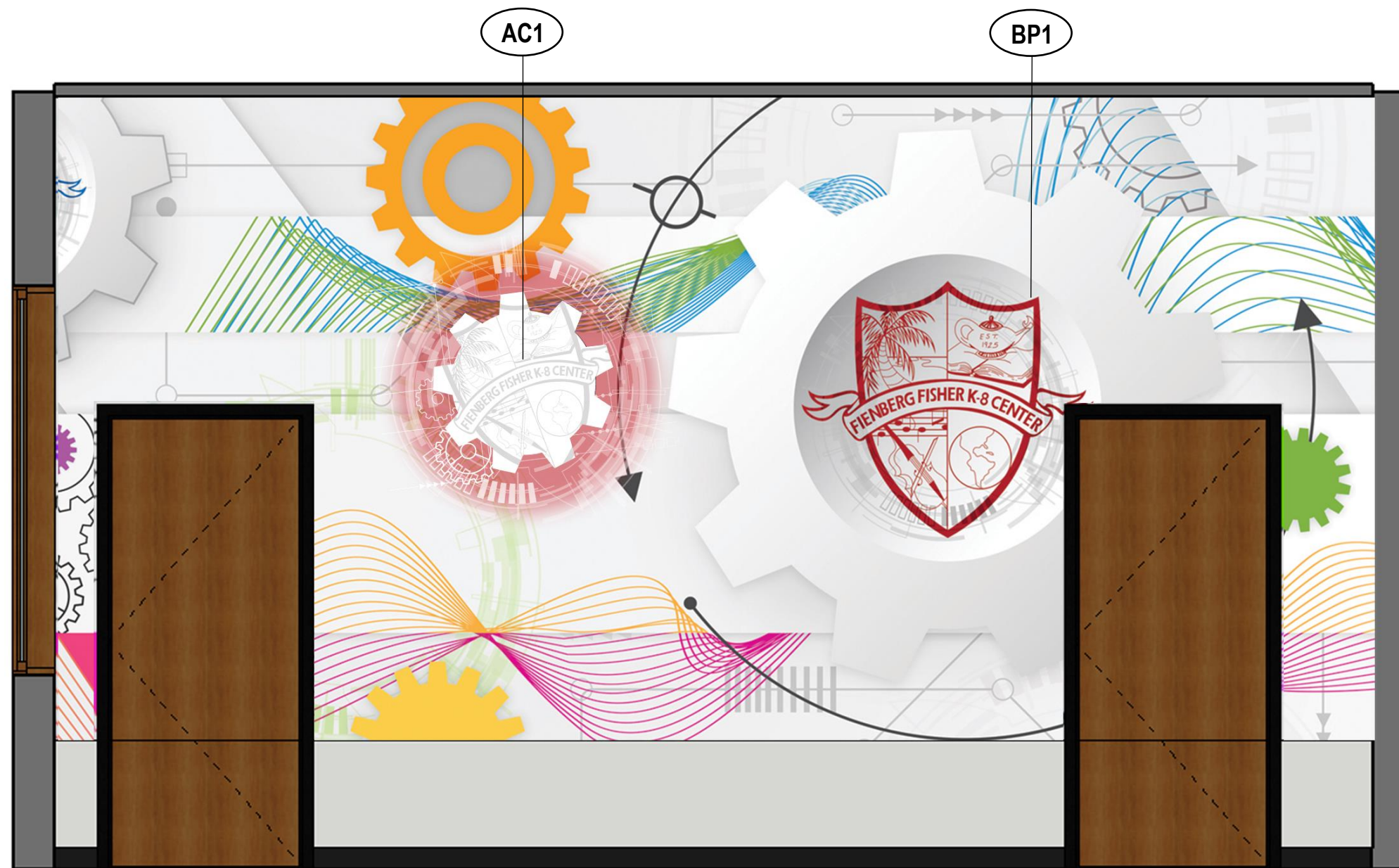
Overall size: 47W x 71.75"H



PHA
PHAB LAB ACRYLIC
 2nd Surface Print on 6mm clear Acrylic
 Cut to Shape
 Wall Mounted w/ Aluminum Screw Caps

Overall size: 36"W x 13.75"H





C INTERIOR ELEVATION C

**Shown with Existing Shelving Removed (By School)*

**Note that walls will need to be repaired and cleaned prior to artwork installation*

***Elevation details need to be confirmed to ensure any existing conduit and/or wall obstacles will not interfere with art & equipment installation.*

****Verify Outlet Location for AC1*

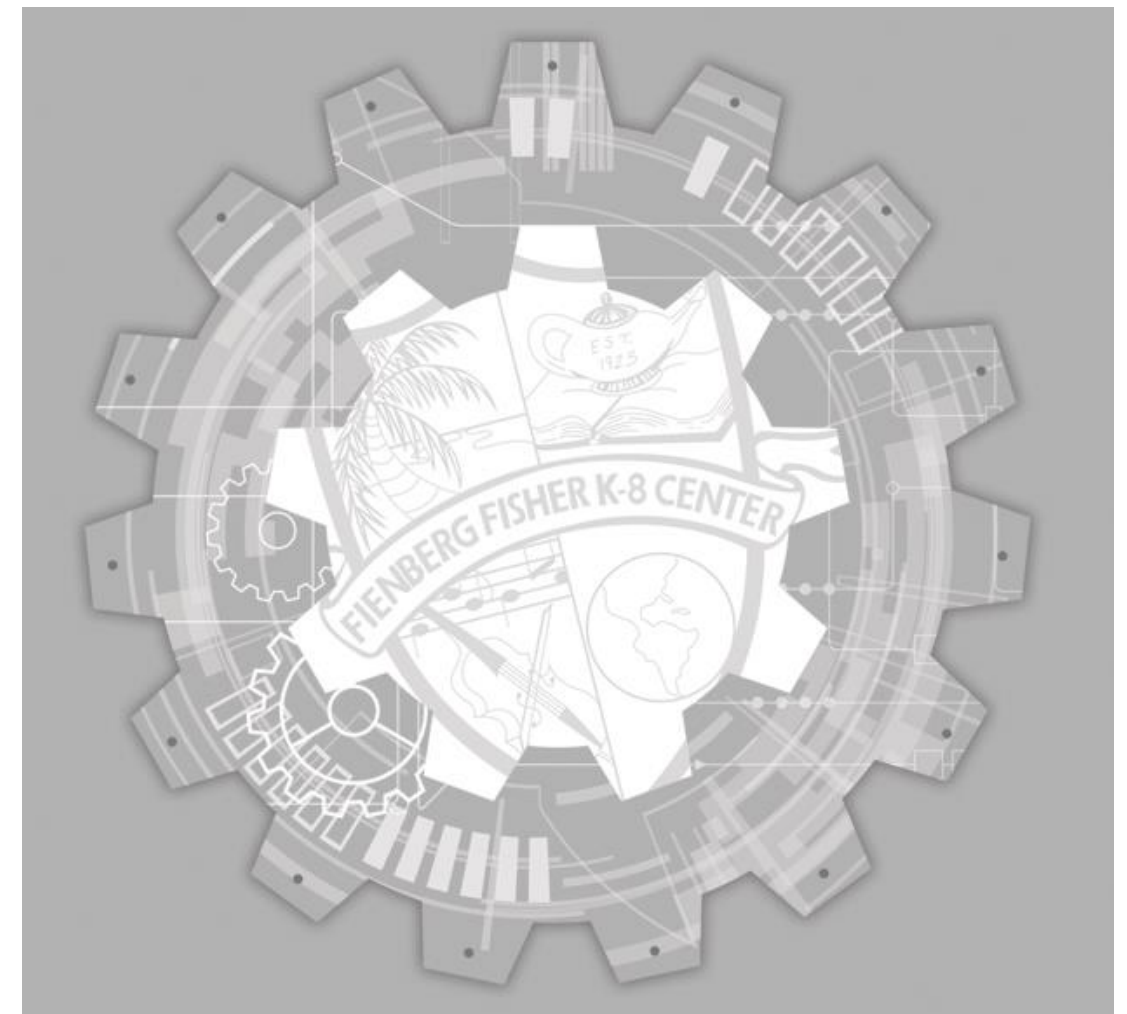
NOTE: School is responsible to remove unwanted wall-hung items and patch walls prior to painting.



BP1
PL-GR-VIVID-BP1
 Direct Print on 6MM White PVC
 Wall Mounted with Snap Caps
 Field Cut Wall Obstacles

Overall size: 293"W x 107"H

**Grey background to show printed white details*



AC1
PL-GR-VIVID-AC1
TOP Layer
 2nd Surface Print on 6mm Clear Acrylic, Cut to Shape
 Back Light RGB Neon, UL Certified
 Wall Mounted with 1.5" Silver Standoffs
 Include Remote, and Consumer Plug and Wire Mold Cover
Overall size: 59"D
***Verify Exiting Outlet Locations*



D INTERIOR ELEVATION D

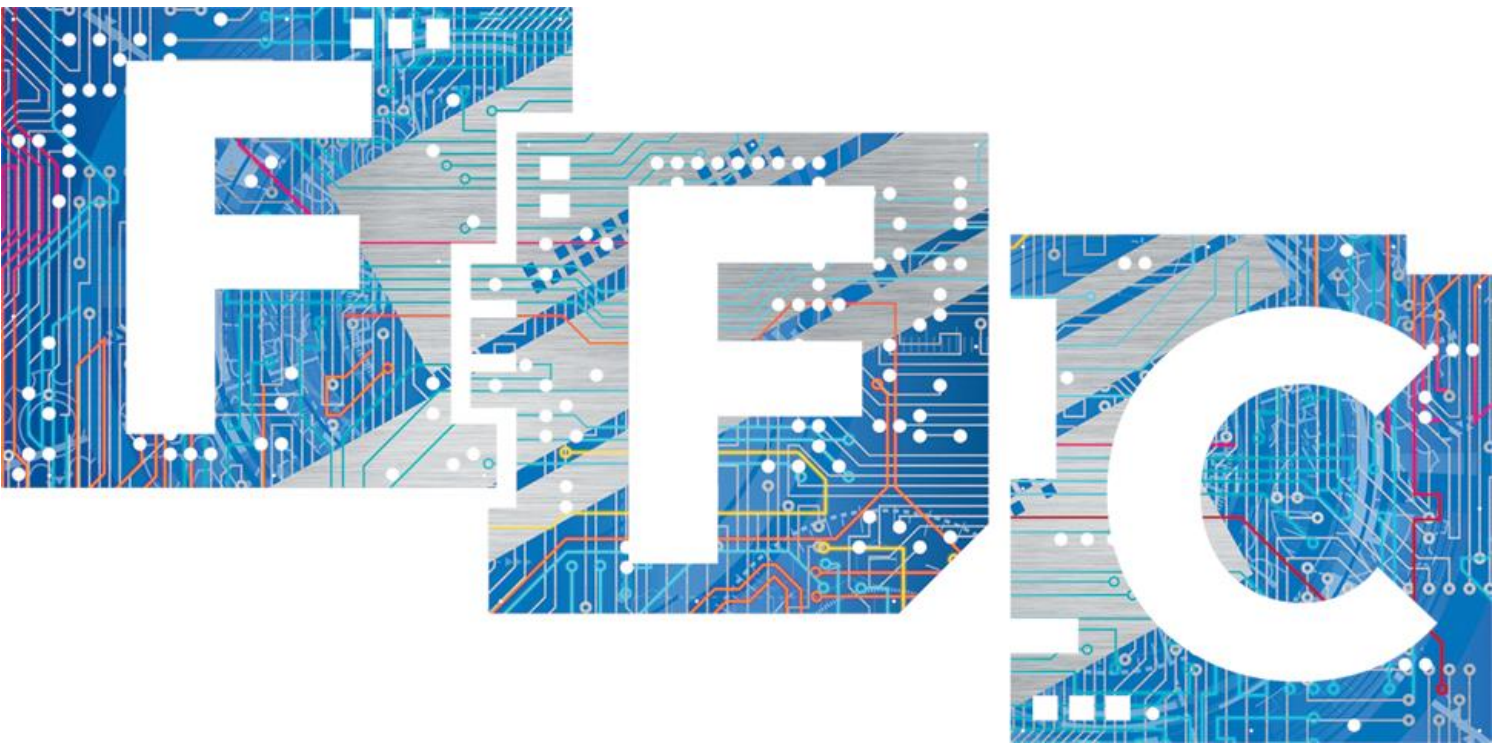
**Note that walls will need to be repaired and cleaned prior to artwork installation*

***Elevation details need to be confirmed to ensure any existing conduit and/or wall obstacles will not interfere with art & equipment installation.*

NOTE: School is responsible to remove unwanted wall-hung items and patch walls prior to painting.

AC2
PL-GR-VIVID-AC2
Direct Print on 3mm Silver DiBond
Cut to Shape
Mounted to Wall w/Aluminum Screw Caps

Overall size: 105"W x 52"H
Each Letter: 36"sq



BP2
PL-GR-VIVID-BP2
Direct Print on 6MM White PVC
Wall Mounted with Snap Caps

Overall size: 190"W x 47"H

PROJECT HISTORY

PRELIM DATE: 01.07.19

REVISION #1: 03.01.20

-Reduce Inspiration Tables to (2) and Chairs to (36)

REVISION #2: 03.31.20

-Added Wall Graphics

REVISION #3: 03.11.22

-Update equipment and finishes

FINAL BOOK APPROVAL

*Signing below indicates all project furniture quantities, colors, laminates, paint, graphic content & all other design elements have been reviewed and will receive no additional revisions. Any revisions requested beyond final book approval will incur additional charges and extended lead times.
**Client indicates an understanding that materials, colors, and artwork in this book are digital representations only and there may be variation in appearance due to screen calibration and/or color print anomalies.

Print Name: _____ Title: _____

Signature: _____ Date: _____



*images for visual reference only, actual appearance may vary.
**Surface finishes and upholsteries are digital representations only and may not match actual samples due to screen calibration or color print/scan anomalies.

PROJECT NAME: Fienberg Fisher
LOCATION: Miami Beach, FL
DATE: 03.11.22 Designer: Sam/G

#5927



TERMS & CONDITIONS

TRASH REMOVAL

Dumpsters and trash haul away are not part of any provided installation pricing. Any waste, dunnage or packaging materials from delivery and installation will be compacted and neatly left on site. If dumpsters are required, special arrangements will be made with costs included on quote.

NEW or REMODEL PROJECTS

Palmer Hamilton is NOT responsible for site verifications unless they have entered into a design agreement contract with the customer. Dealer/end-user takes full responsibility of ensuring furniture and décor will fit. Please *verify* room dimensions prior to ordering. If drawing was scaled, traced or copied, please field verify all room dimensions for accuracy. If field dimensions can not be obtained, late shipments may occur. Do not scale off these plans. If scaled plans are needed, please contact the project manager. Palmer Hamilton is not responsible for changes, or deletions not reviewed and approved in advanced by Palmer Hamilton. If half-walls or furnishings are to be clipped-down to floor, the Dealer/End-user is responsible to inform Palmer Hamilton of the locations. Palmer Hamilton is not responsible or liable for any electrical or plumbing that may be in the floors. Please advise Palmer Hamilton if there is Asbestos in or around the location of the installation.

ADA COMPLIANT SEATING

A minimum of 5% but not less than one table shall be placed for wheelchair compliance. Palmer Hamilton is not responsible if the client has requested to provide less than this number in their facility. It is the responsibility of the end user to meet the compliancy standards. It is also the responsibility of the end user to know their fire code capacity limits.

ELECTRICAL

Palmer Hamilton will suggest and supply the light fixtures if requested by the customer. Palmer Hamilton installers do not install light fixtures as our installers are not electrical contractors and do not hold local licenses. School is responsible for all wiring and hooking up of the light fixtures. Palmer Hamilton will supply a lighting fixture plan of requested locations for the Schools electrician to use for placement of lighting fixtures

WINDOWS

School is responsible for any/all repair of window glass, trim and window caulking if necessary, prior to the installation. School is responsible for cleaning of windows for window cling installation. If windows are not cleaned prior to installation, Palmer Hamilton will assess an additional charge for cleaning. School is responsible for removing any window treatments that are not staying in new design.

WALLS

School is responsible for cleaning walls of any and all hooks, bulletin boards not remaining in design, loose wiring, removable clocks, conduit if not necessary. Repair/Patching of any broken drywall and cracks in CMU, prior to installation. Any newly constructed walls must be primed and painted prior to installation. Any painting that is not supplied by Palmer Hamilton needs to be completed fourteen (14) days prior to our installation to properly cure.

CEILING

Palmer Hamilton does not sell or install standard ceiling tiles. Palmer Hamilton will remove or replace tiles if it is part of a décor item only. Our installers will only install any décor that might be attached to the ceiling and not to the tile grid for safety reasons as required.

FLOORING

Palmer Hamilton may specify a suggested flooring, but takes no liability in regard to floor performance, installation , and/or upkeep. Any new flooring must be completed fourteen (14) days prior to installation to allow ample curing time of adhesives, and cleaning of flooring must also be completed prior to Palmer Hamilton installers being onsite for installation. If Nonstandard glides are needed, it is the responsibility of the end-user to inform Palmer Hamilton of the type needed and cost will be added to the quote. Vinyl Base trim must be completed prior to Palmer Hamilton furniture installation, unless the decision was made during the design phase by the client to have Palmer Hamilton installers install the base trim.

EXISTING EQUIPMENT AND FURNITURE

Please remove all equipment and furniture that is not to be in the new design plan prior to Palmer Hamilton's arrival.

☐

I agree to terms & conditions

Signature _____

Date: _____