

Slow Streets 2.0 Toolkit



SIGNAGE & MARKINGS



DIVERTERS



CURB EXTENSIONS



MEDIANS + CHICANES



CIRCLES + SPEED HUMPS



PINCH POINTS

Materials - Paint, Curbing, Posts



PRECAST CONCRETE



K71 POSTS



FLEX POSTS



The WAVE



PAINT



RUBBER SPEED HUMPS

Materials - Delineators



Flexposts

- Least Durable (1+ years)
- Require regular replacement
- Bolted or epoxied
- \$30/unit material
- \$10/ unit install



K71

- Medium Durability (3-5+ years)
- Bolted in ground
- Require regular replacement
- Come in different colors
- \$200/unit material
- \$45 / unit install



PRECAST CONCRETE

- Most Durable (5+ years)
- Bolted in ground
- Require some replacement
- Come in 8'-12' segments, 12"-18" wide
- \$210-240/unit material
- \$45 / unit install

LOW

Durability + Investment



HIGH

Materials - Paint Types



Traffic Paint

- Least Durable (1+ years)
- Requires regular cleaning
- Requires regular touching up
- Can be applied with volunteers
- Can be painted on with mural
- \$2.50/sf installed



StreetBond

- Medium Durability (3-5+ years)
- Requires regular cleaning
- Requires touching up
- Can be applied with volunteers
- Can be painted on with mural
- \$4/sf installed



Ruby Lake Glass / Epoxy

- Most Durable (5+ years)
- Requires regular cleaning
- Requires professional install
- Only suitable for solid color
- \$8/sf installed

LOW

Durability + Investment



HIGH

Overall Network

\$2,000,000 – \$2,750,000

- Increase durability + aesthetics of materials
- Learn from Slow Streets 1.0
 - Focus on Speed + Volume Reduction
 - Painted curb extensions
 - Pavement markings throughout
 - Diverters
 - Speed humps, circle, chicanes
- Phased Implementation by street: Lenox, Jefferson, Meridian, Pennsylvania, 6, 8, 10, 13, 15
- Includes Jefferson protected bike lane
- Avoid 11 / 15 Streets for fire department access
- Maintenance costs not included

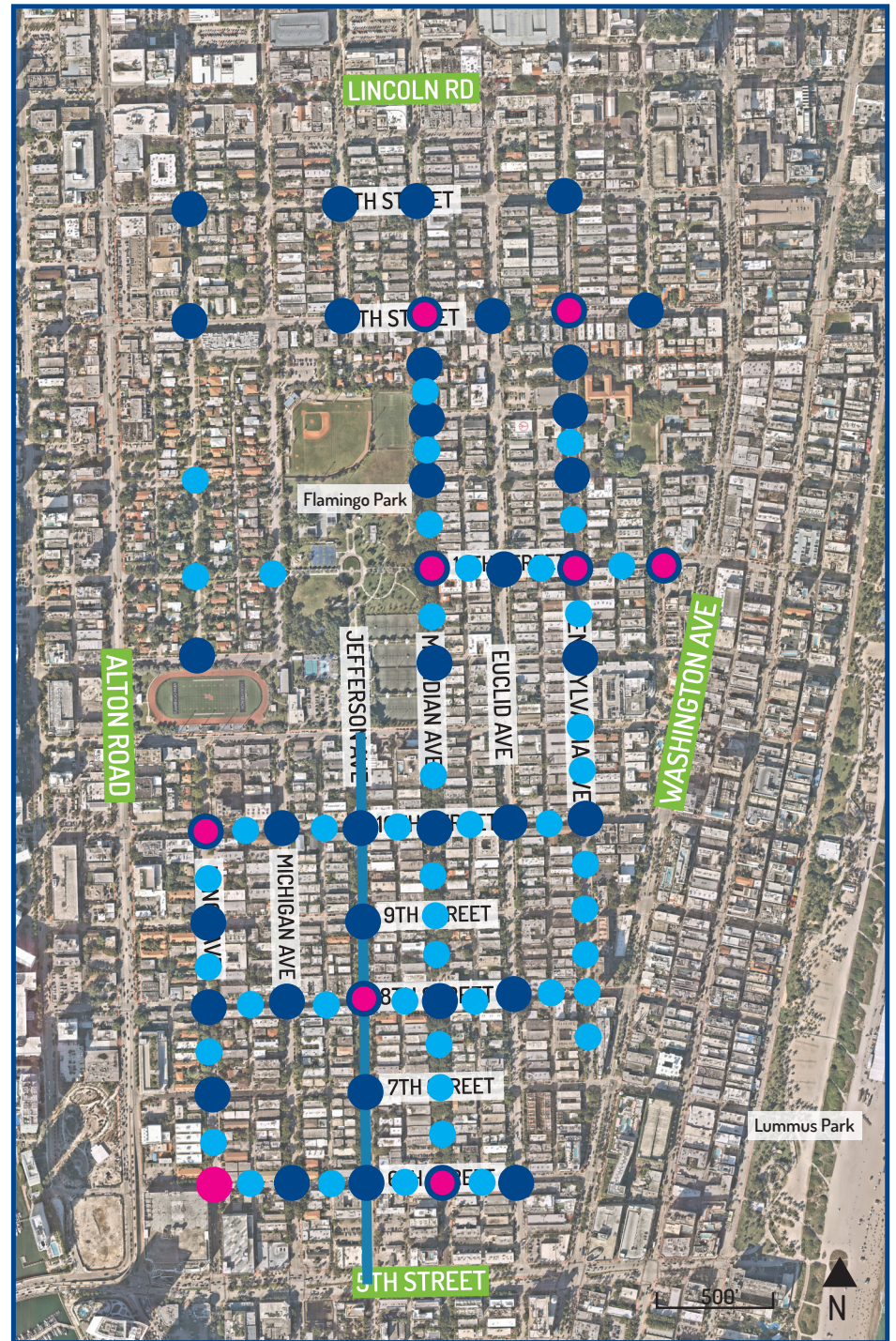
— PROTECTED BIKE LANE

● CURB EXTENSIONS

● DIVERTERS

● SPEED HUMPS / CIRCLES / PINCH POINTS

● CURB EXTENSION / DIVERTER COMBO



Phase 1

\$750,000 – \$1,250,000

- Jefferson
 - Protected Bike Lane
 - Curb extensions (x5 intersections)
 - Diverters (x1)
- 13 Street
 - Curb extensions throughout (x 4 intersections)
 - Mid-block islands / mini-circles (x 5)
 - Speed humps (x3)
 - Right turn diverters (x3)
- Pavement markings / signage throughout
- 10 Month Timeline from NTP
- Maintenance costs not included

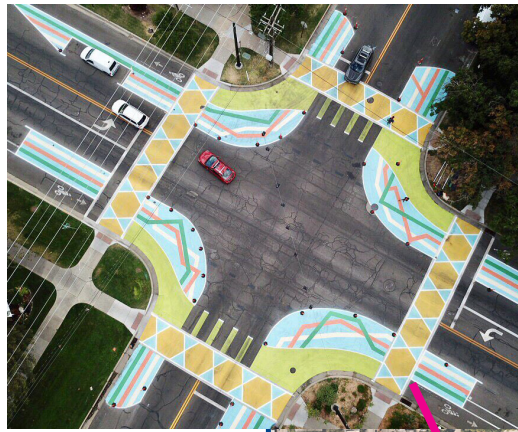
— PROTECTED BIKE LANE

● CURB EXTENSIONS

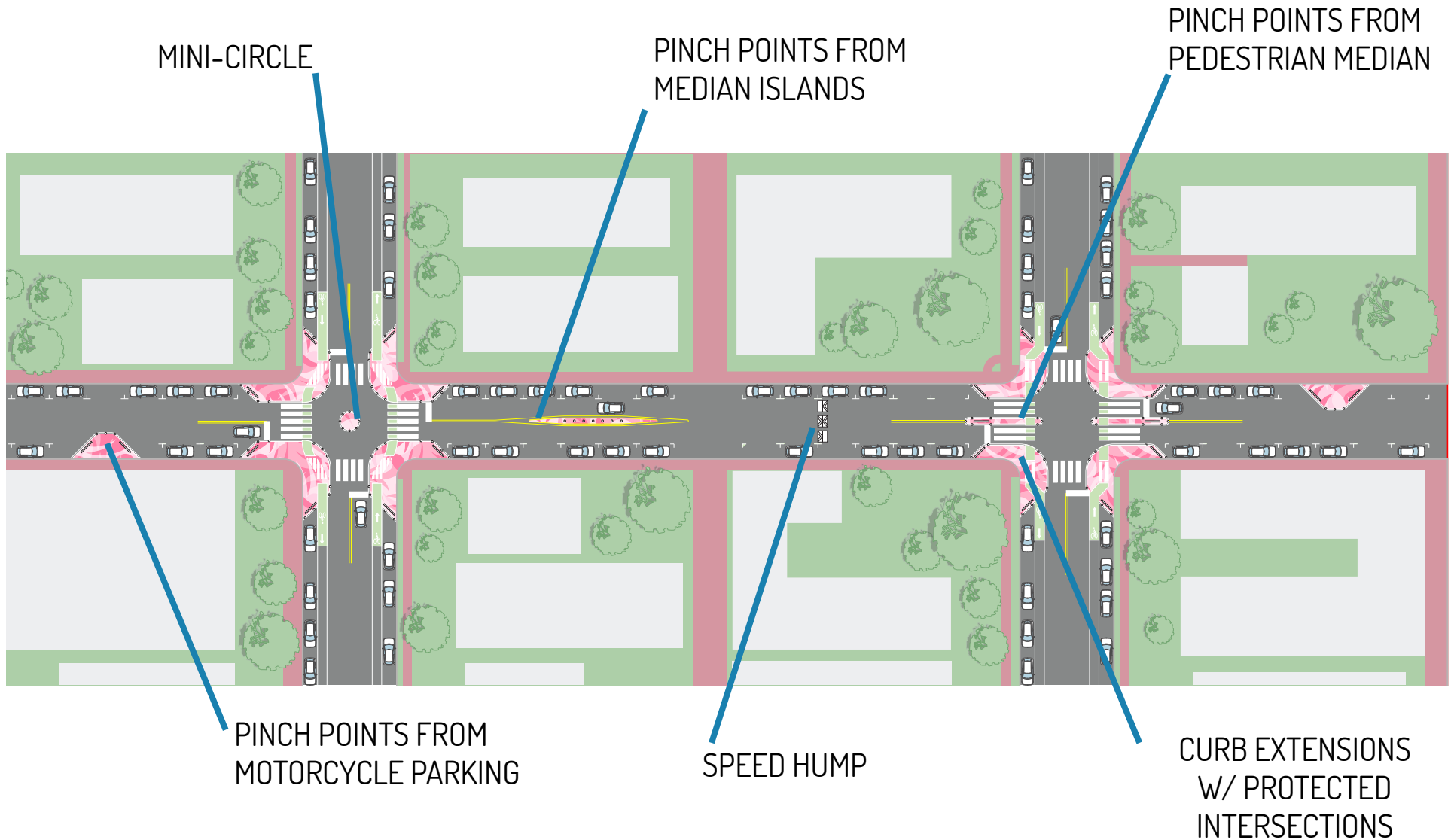
● DIVERTERS

● SPEED HUMPS / CIRCLES /
PINCH POINTS

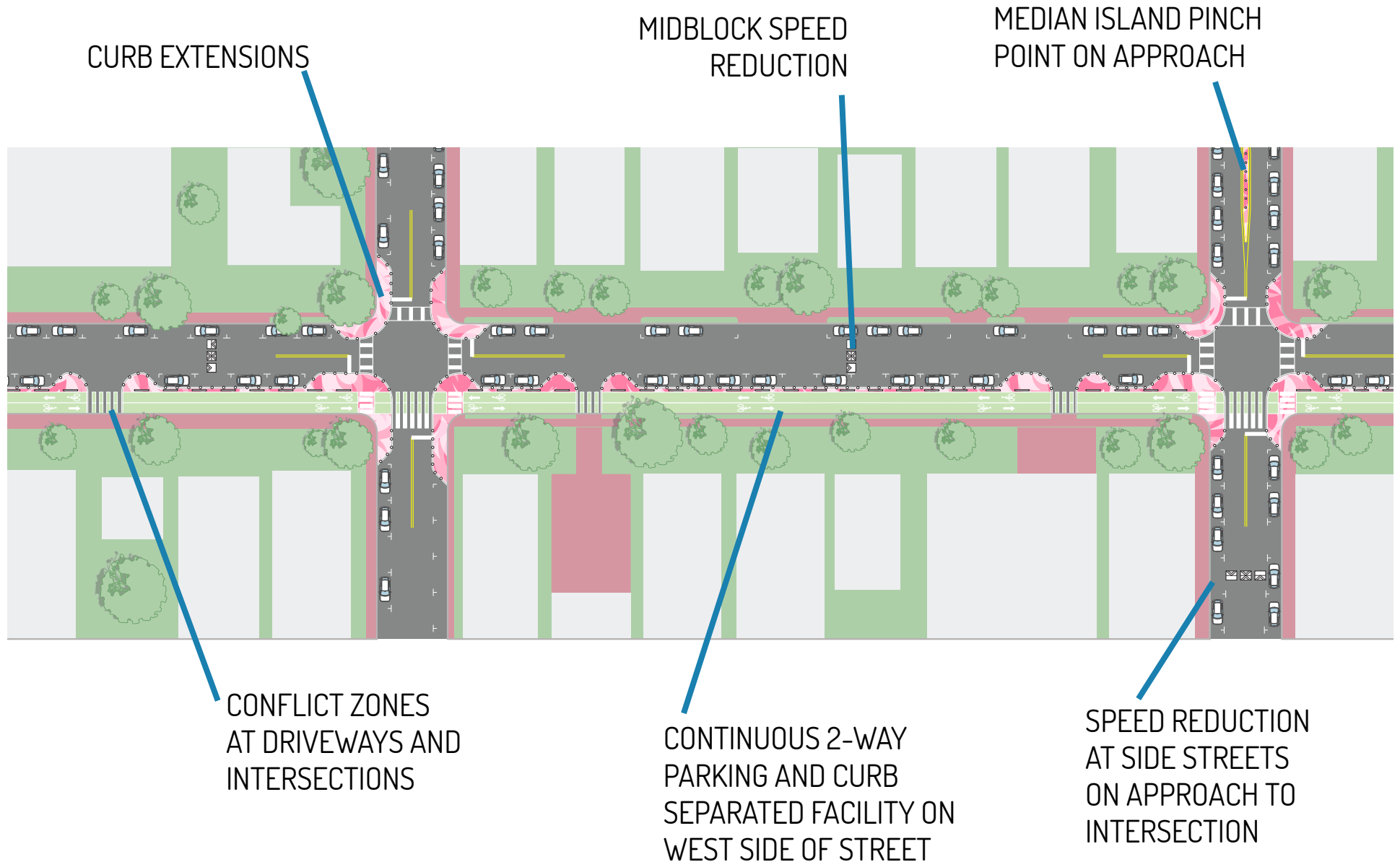
● CURB EXTENSION /
DIVERter COMBO



Bringing It all Together - 13 Street

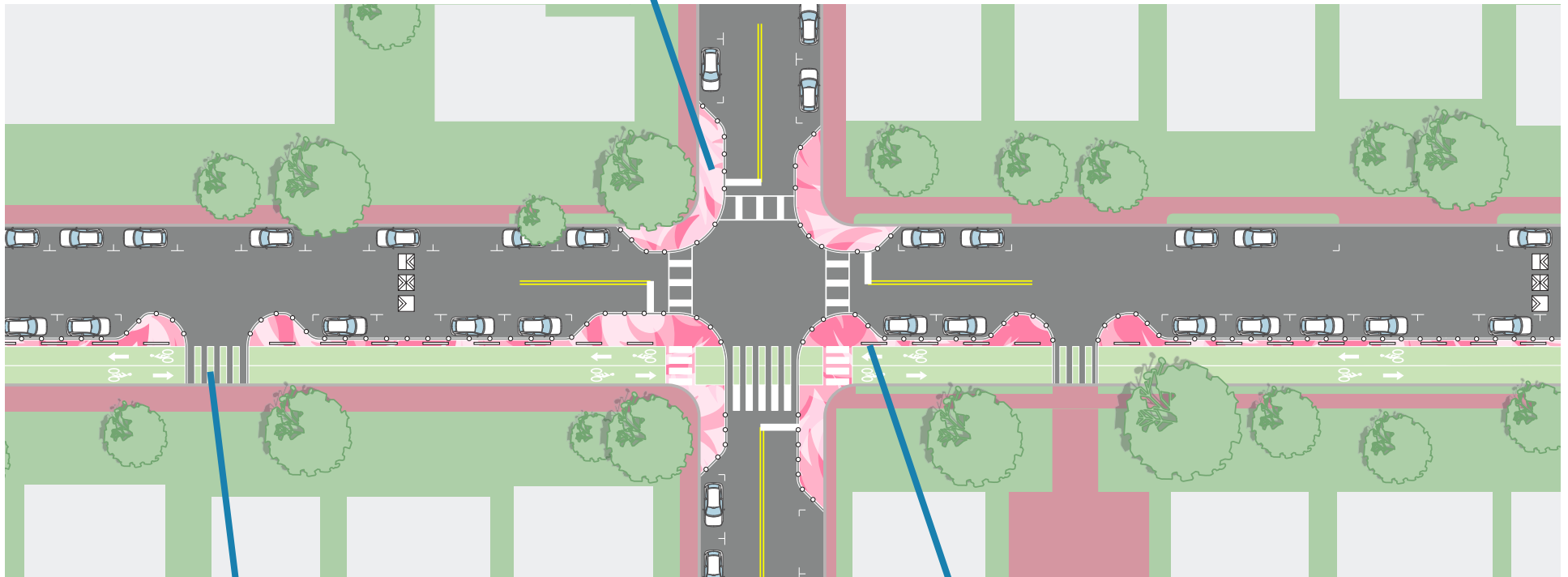


Bringing It all Together - Jefferson



Bringing It all Together - Jefferson

CURB EXTENSIONS



CONFLICT ZONES
AT DRIVEWAYS AND
INTERSECTIONS

MODULAR CURBING