



# NORMANDY ISLE

## WORKFORCE HOUSING

1960 NORMANDY DR.  
MIAMI BEACH, FL 33141

**CITY OF MIAMI BEACH**  
**DESIGN REVIEW BOARD**

DRB FINAL SUBMITTAL  
PLAN NUMBER: DRB22-0850  
JULY 11<sup>TH</sup>, 2022

### SCOPE OF WORK:

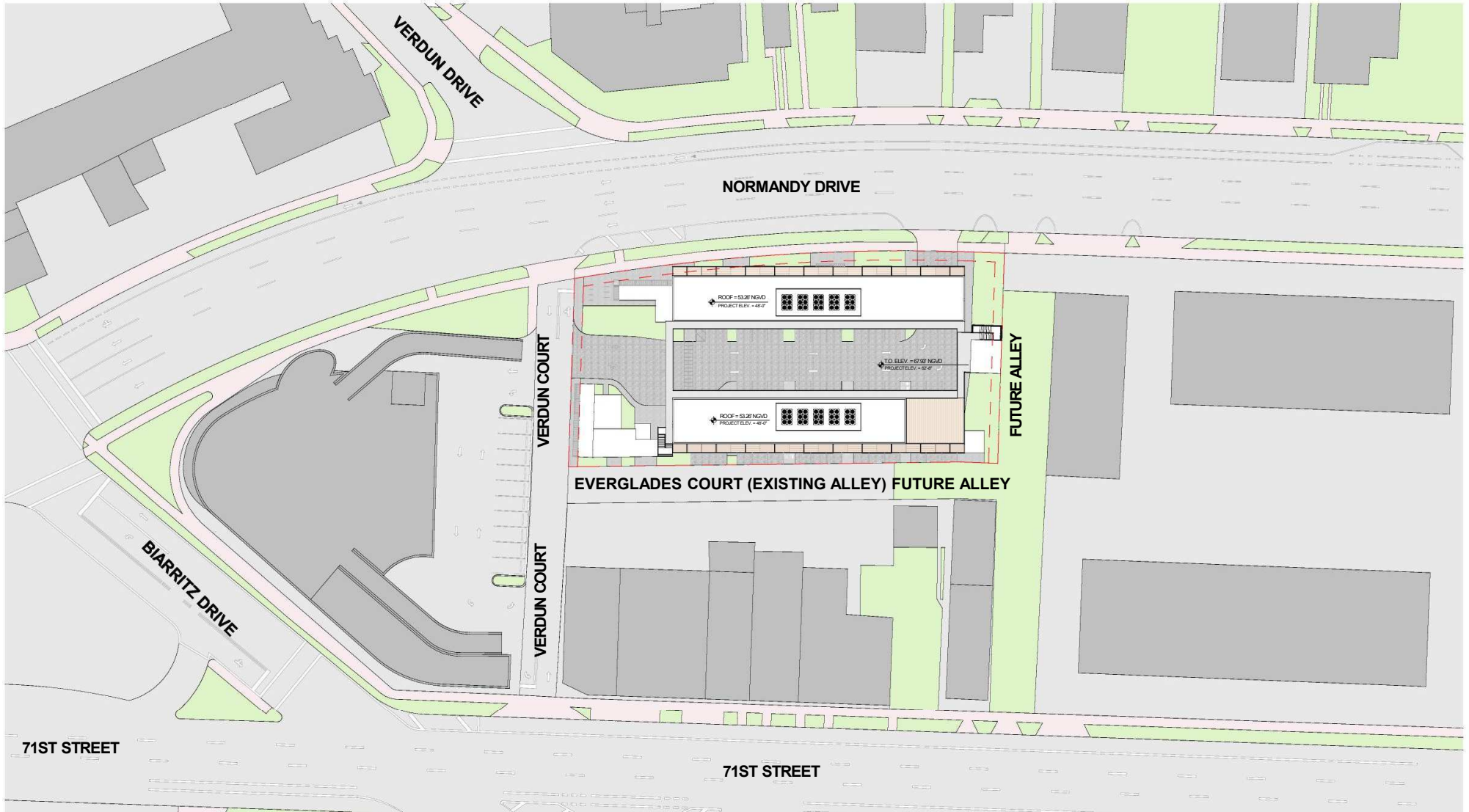
- 60 WORKFORCE HOUSING UNITS TOTALING 24,000 SF (NOT INCLUDING COMMON AREAS AND PROJECTING BALCONIES)
- ORGANIZED IN 3 LEVELS
- APPROXIMATELY 2,000 SF OF RETAIL SPACE ON GROUND FLOOR
- 34 CAR PARKING SPACES; 32 BICYCLE STORAGE SPACES



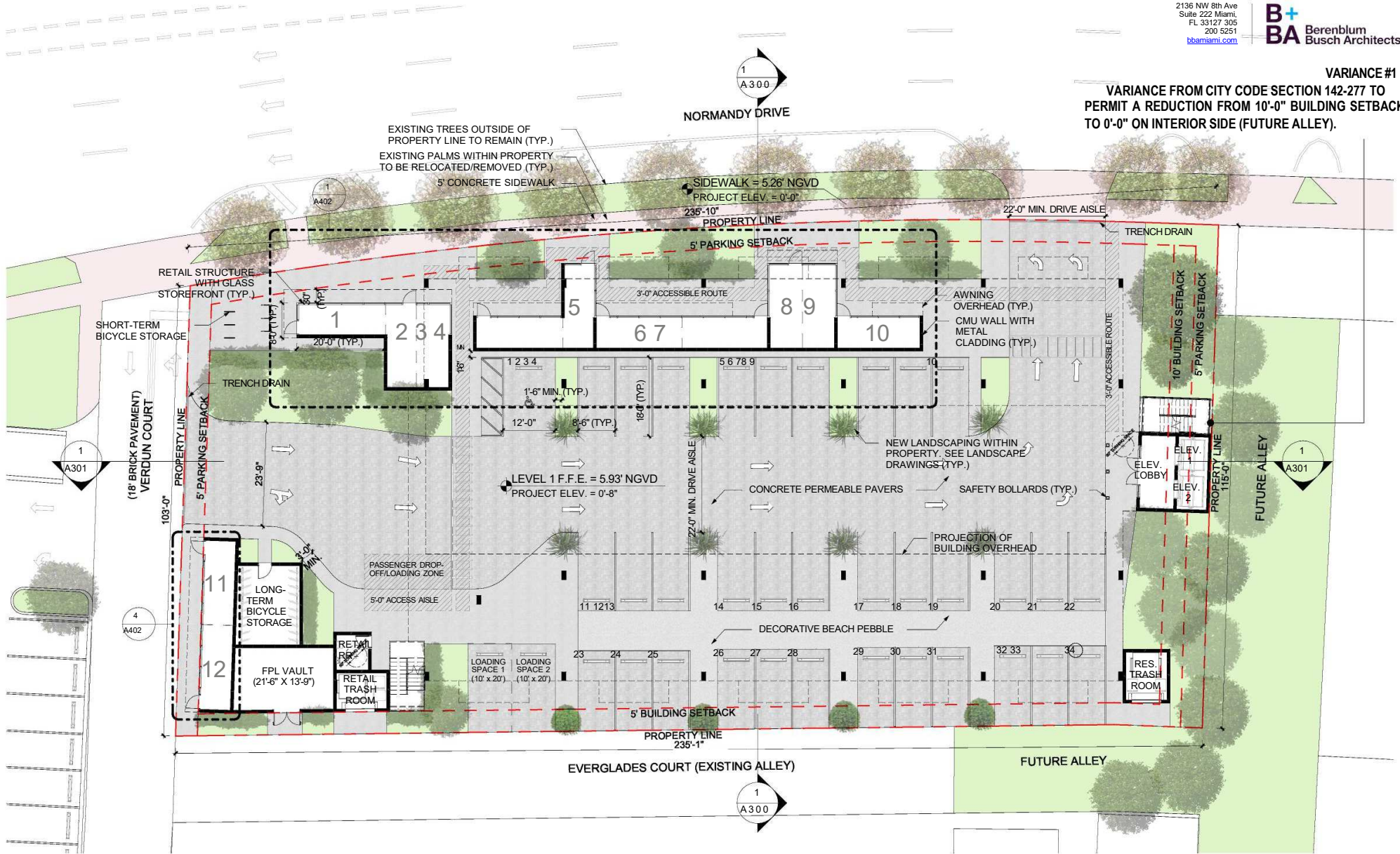
KEY MAP WITH VIEWS AND AREA OF WORK

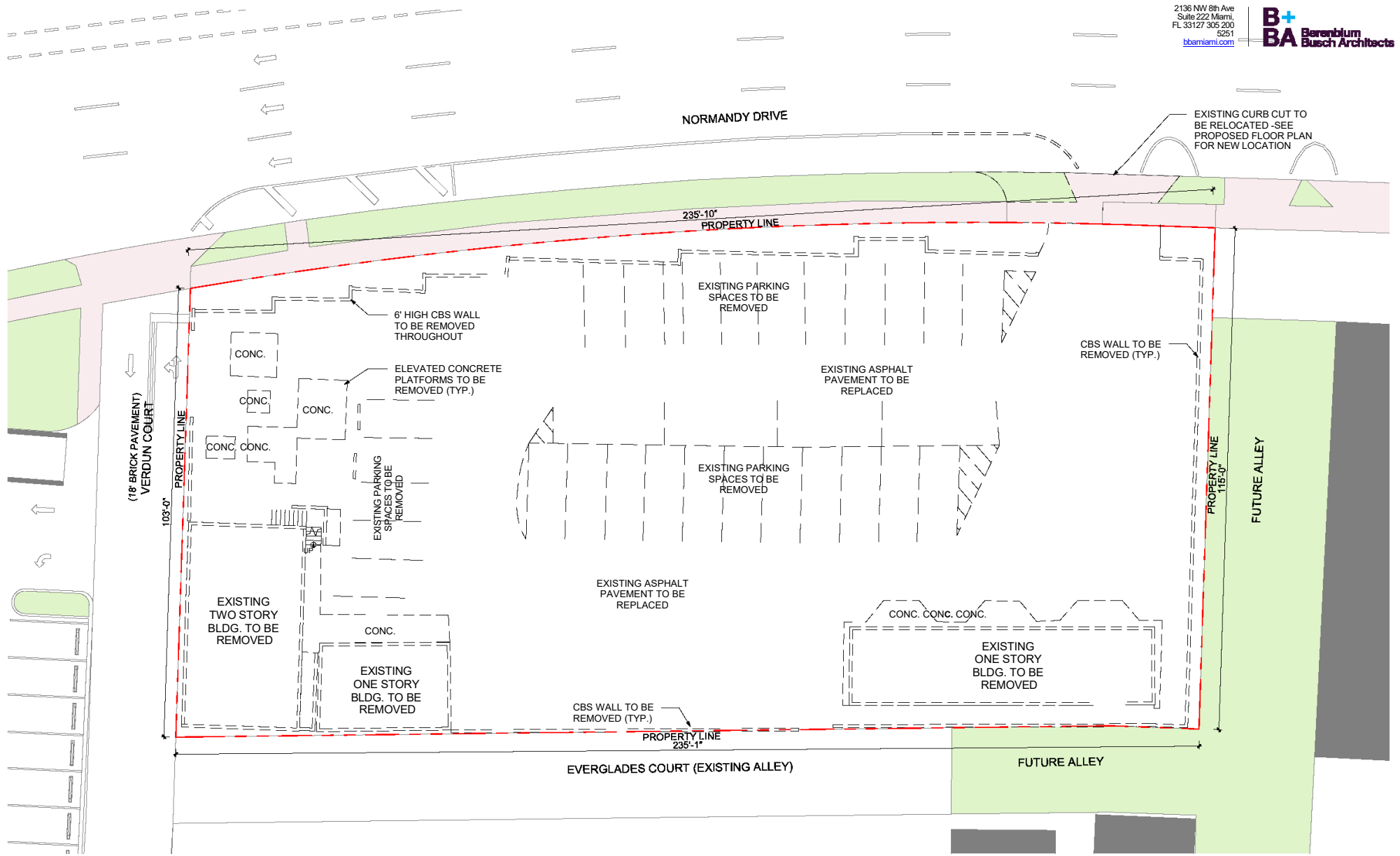


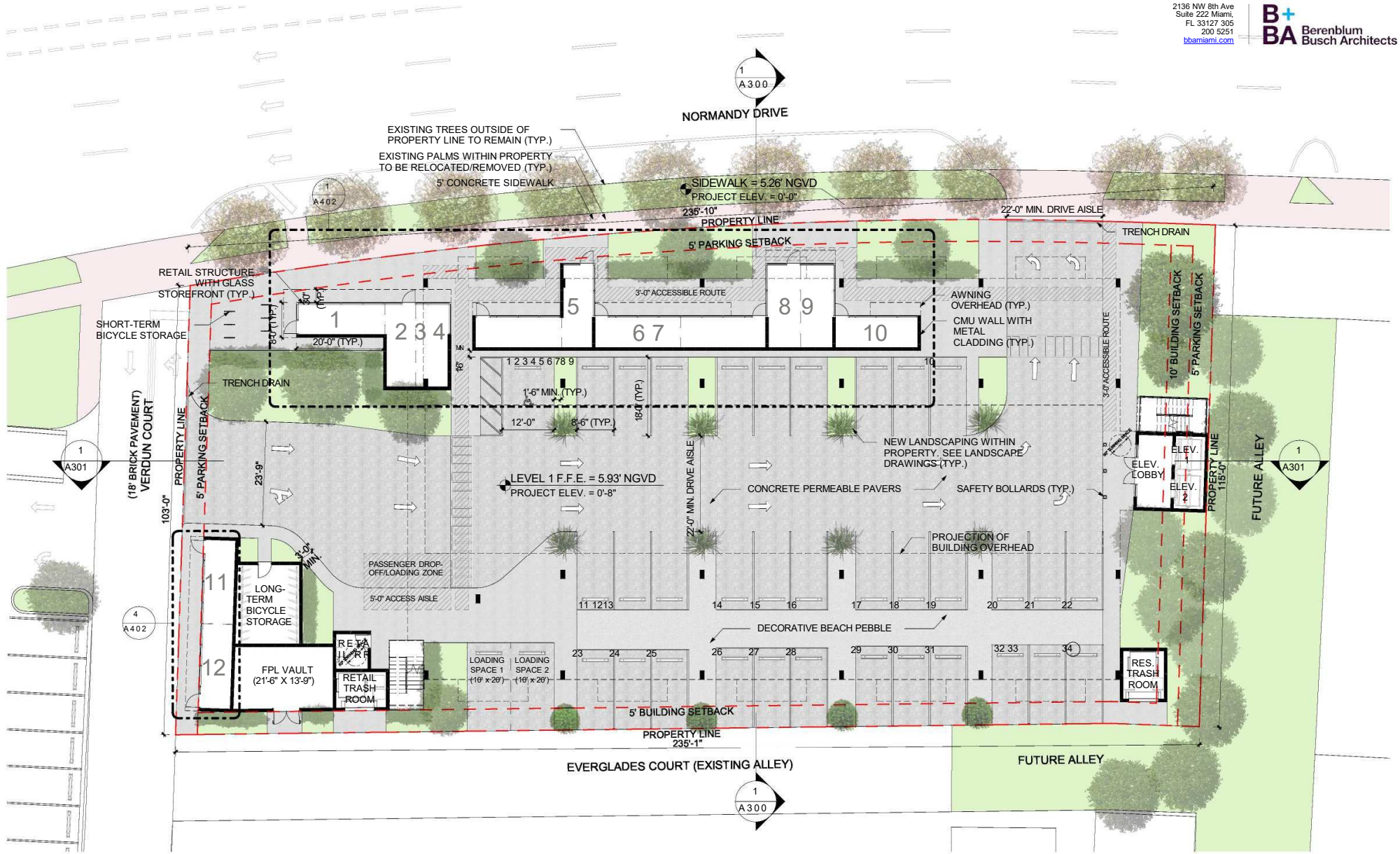




VARIANCE #1  
 PERMIT A REDUCTION FROM 10'-0" BUILDING SETBACK  
 TO 0'-0" ON INTERIOR SIDE (FUTURE ALLEY).

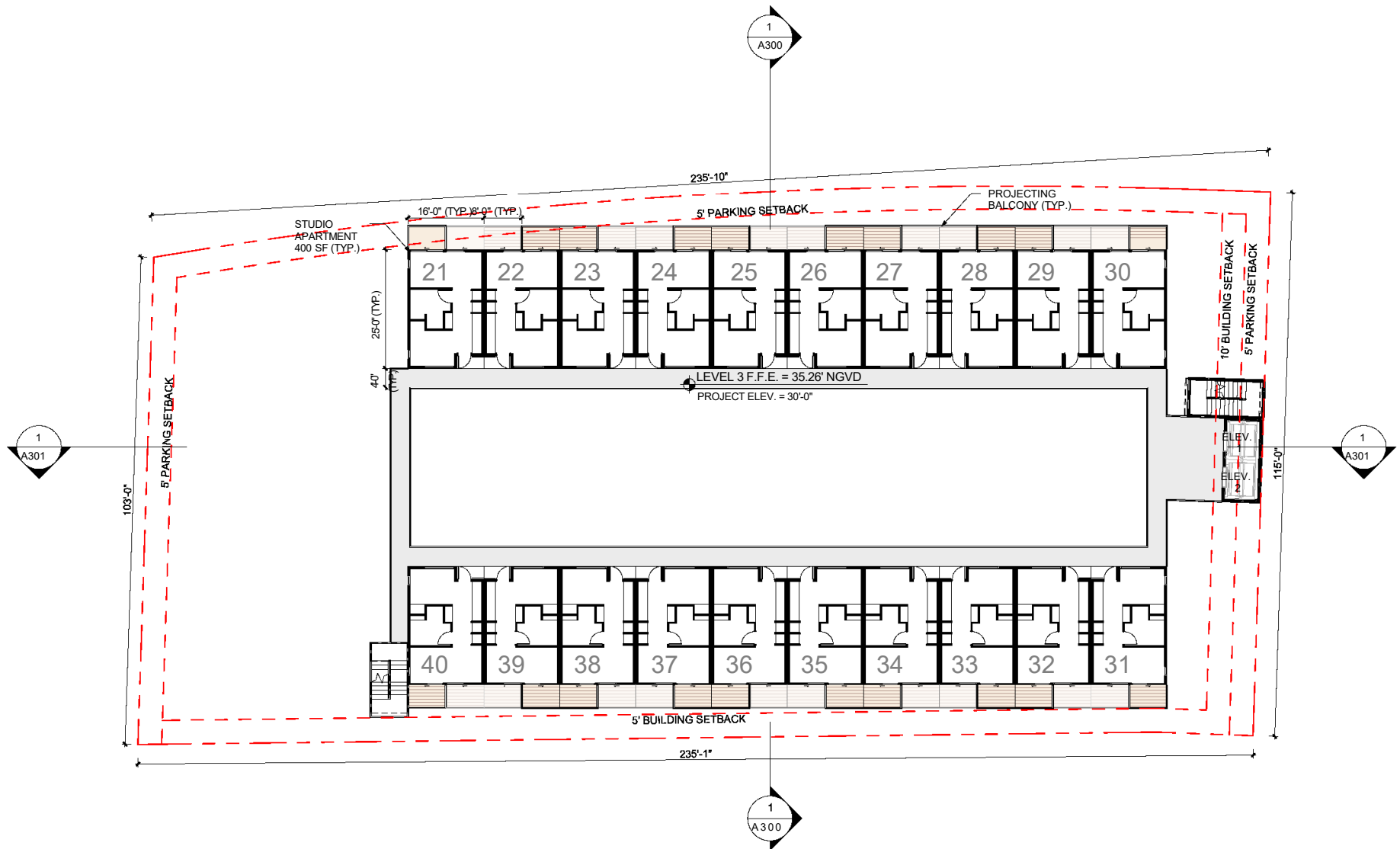


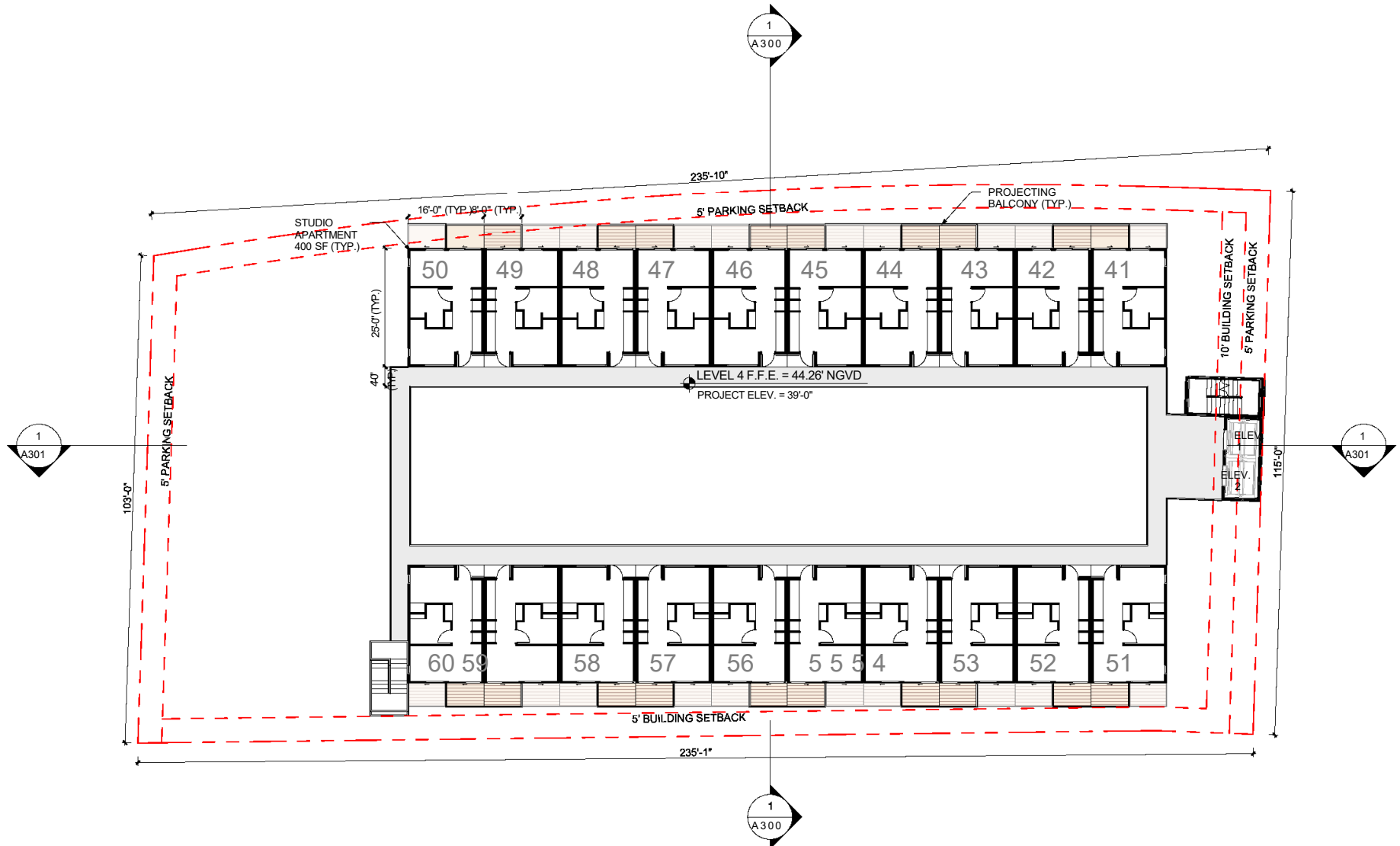


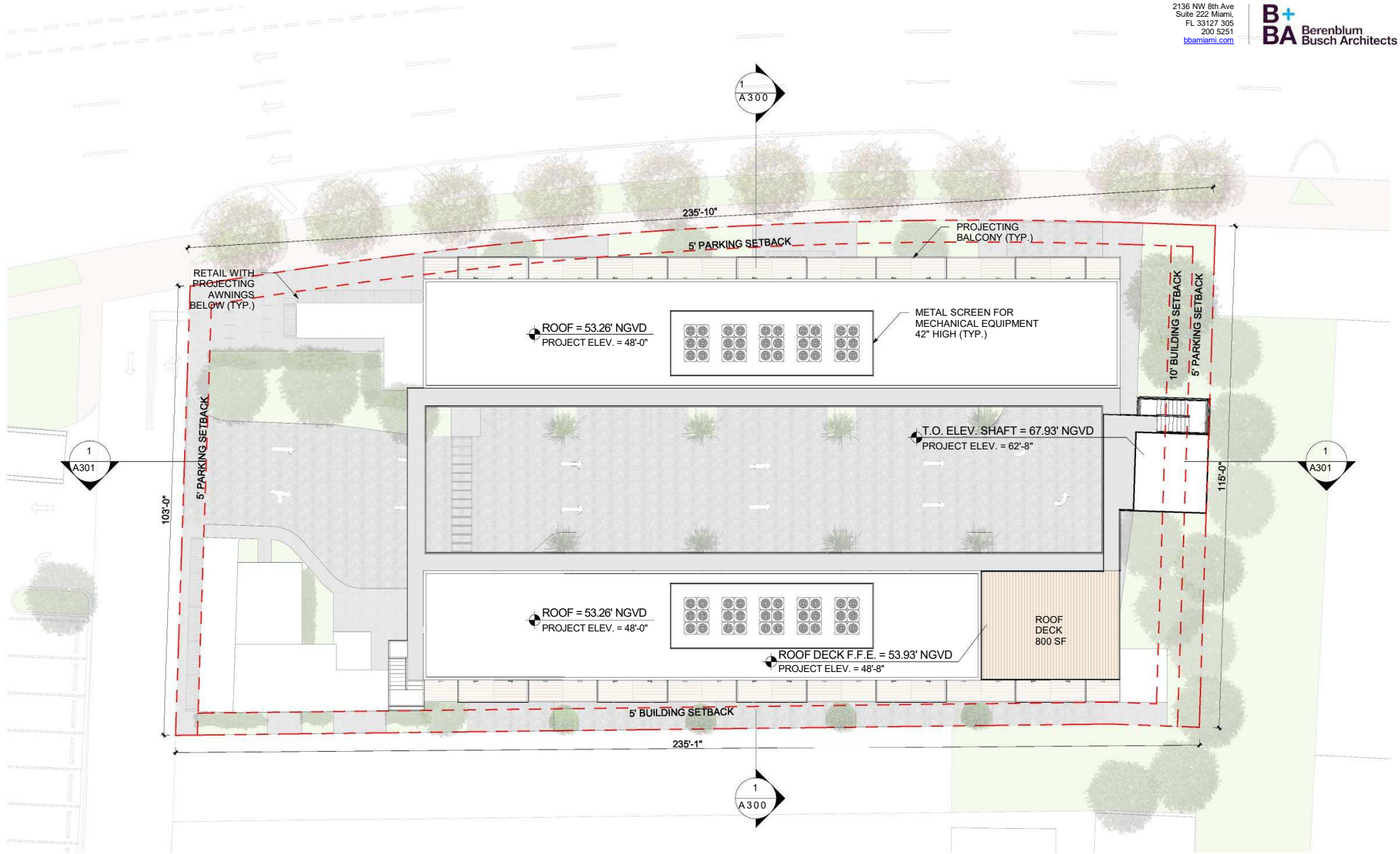


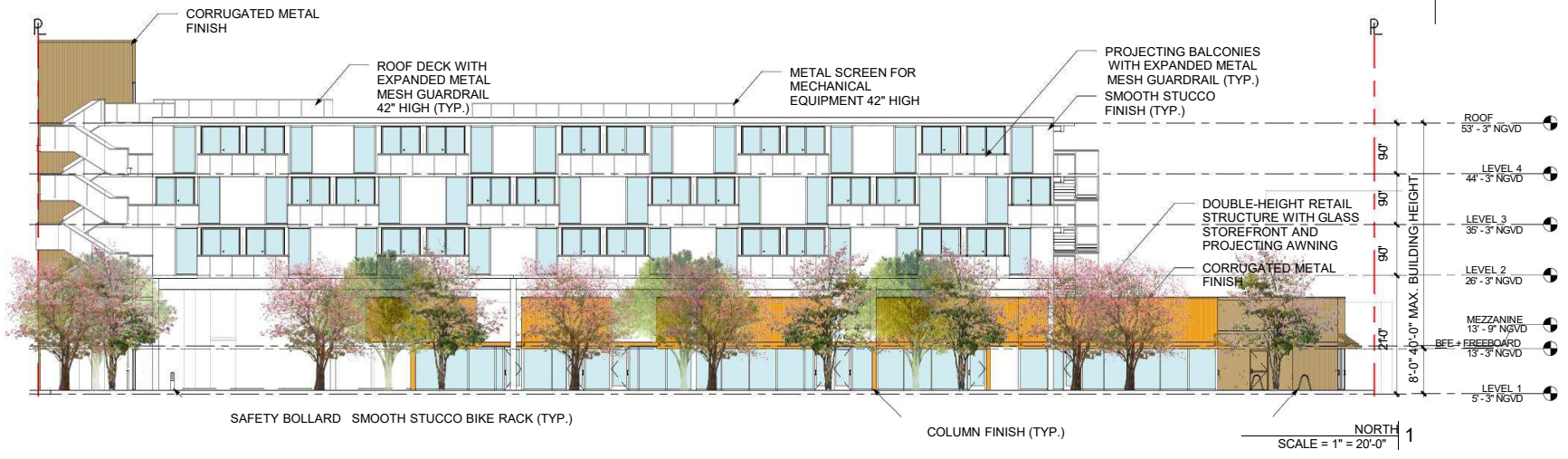


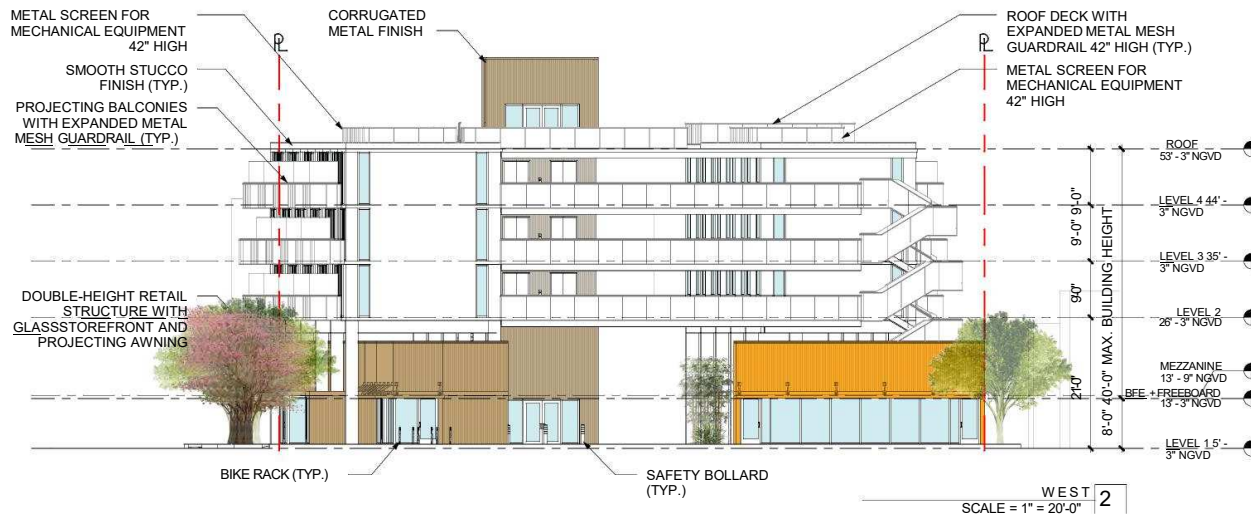


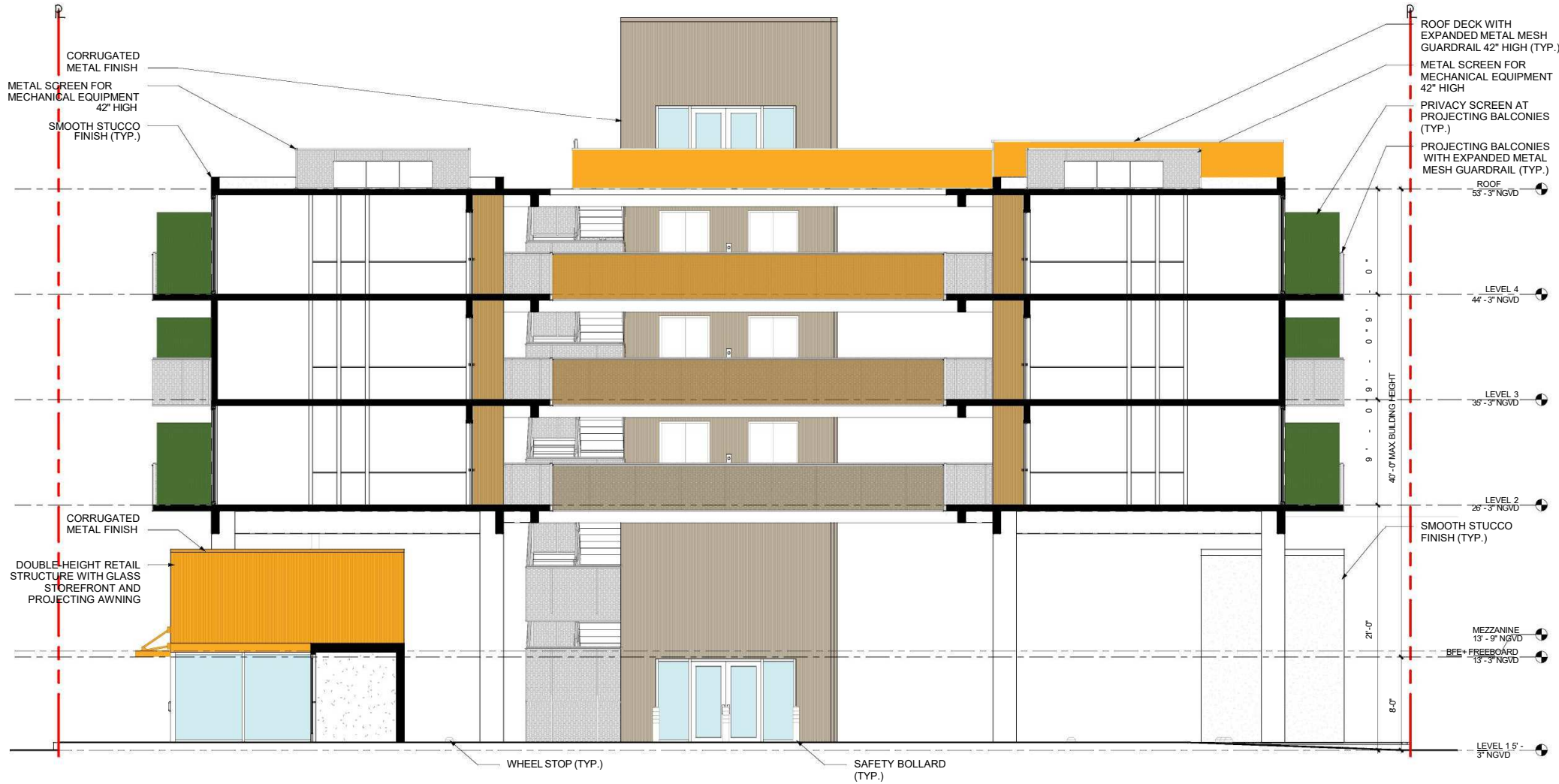




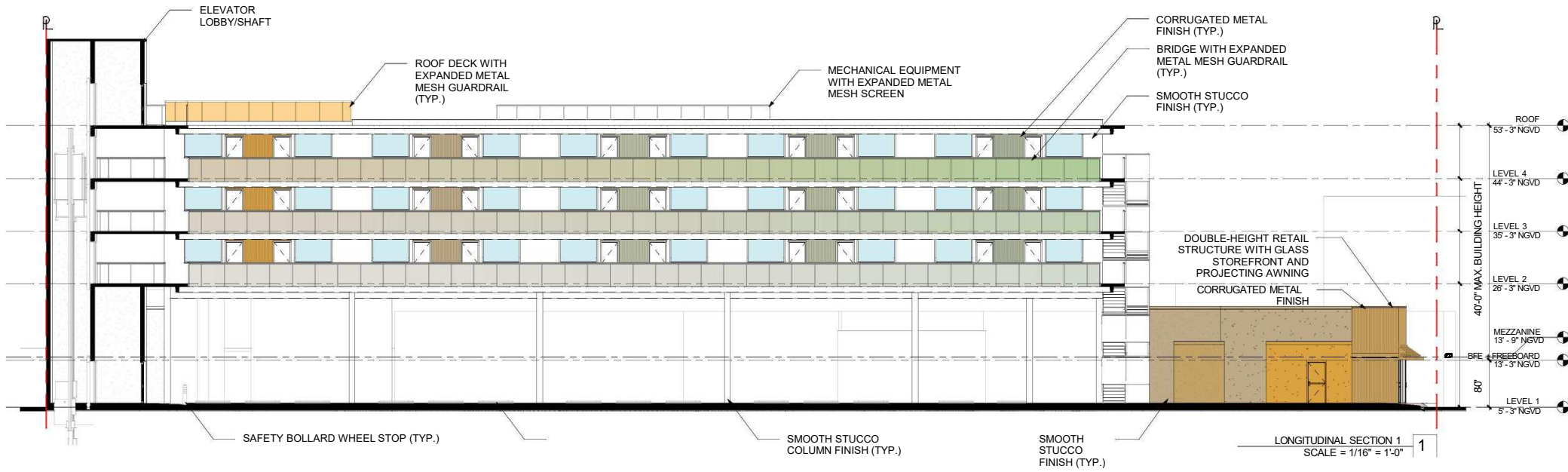


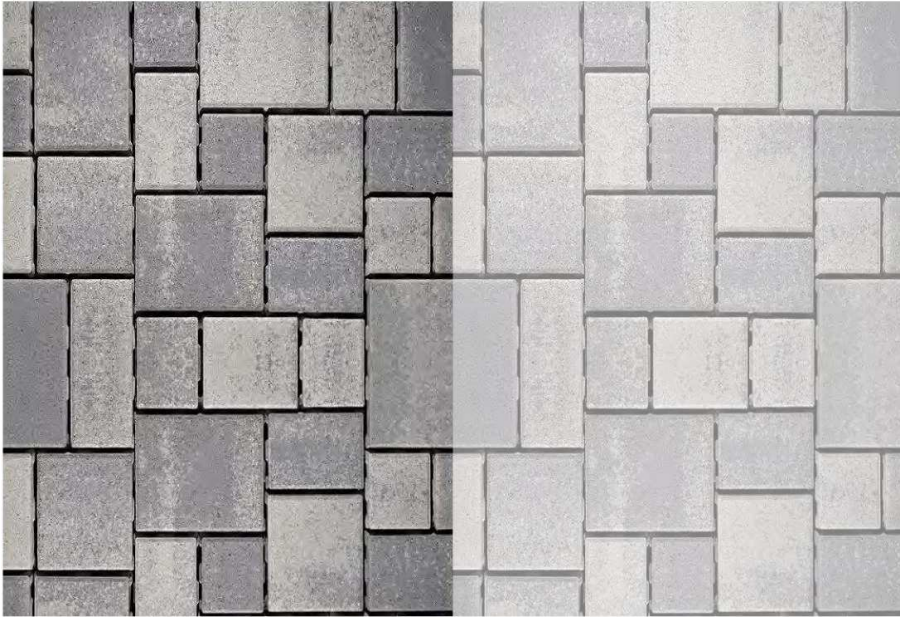




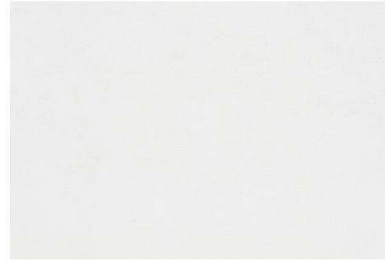


CROSS-SECTION 1  
 SCALE = 1/8" = 1'-0" 1

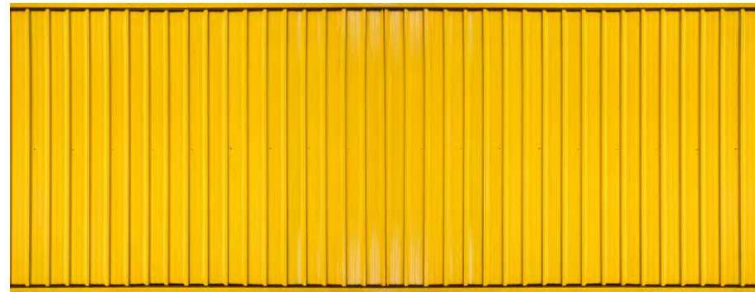




CONCRETE PERMEABLE PAVERS RETAIL/ELEVATOR EXTERIOR CLADDING: PAINTED CORRUGATED METAL PANELS



PAINTED SMOOTH STUCCO EXTERIOR FINISH



RIVER STONES ON PLANTERS AT PARKING GUARDRAILS: PAINTED EXPANDED METAL MESH

