

REVISION SCHEDULE:

PROJECT INFO:



C.M.B. LANDSCAPE DRB FINAL SUBMITTAL 08.08.22
NEW RESIDENCE | 4,5 + 6 STAR ISLAND DRIVE | MIAMI BEACH, FLORIDA

CLIENT / PROPERTY INFORMATION

PROPERTY ADDRESS
4, 5 + 6 STAR ISLAND DRIVE
MIAMI BEACH FLORIDA, 33139

INDEX OF SHEETS

- L-0.0 Landscape Cover + Sheet Index
- L-1.0 Existing Tree Survey + Disposition Plan
- L-1.1 Existing Tree Charts
- L-1.2 Existing Tree Chart, Mitigation Summary, Notes + Details
- L-2.0 Landscape Master Plan
- L-2.1 Canopy - First Floor Landscape Plan
- L-2.2 Understory - First floor Landscape Plan
- L-2.3 Second Floor Landscape Plan
- L-2.4 Roof Terrace Landscape Plan
- L-3.0 Plant Lists + Landscape Legend
- L-3.1 Landscape Notes + Details

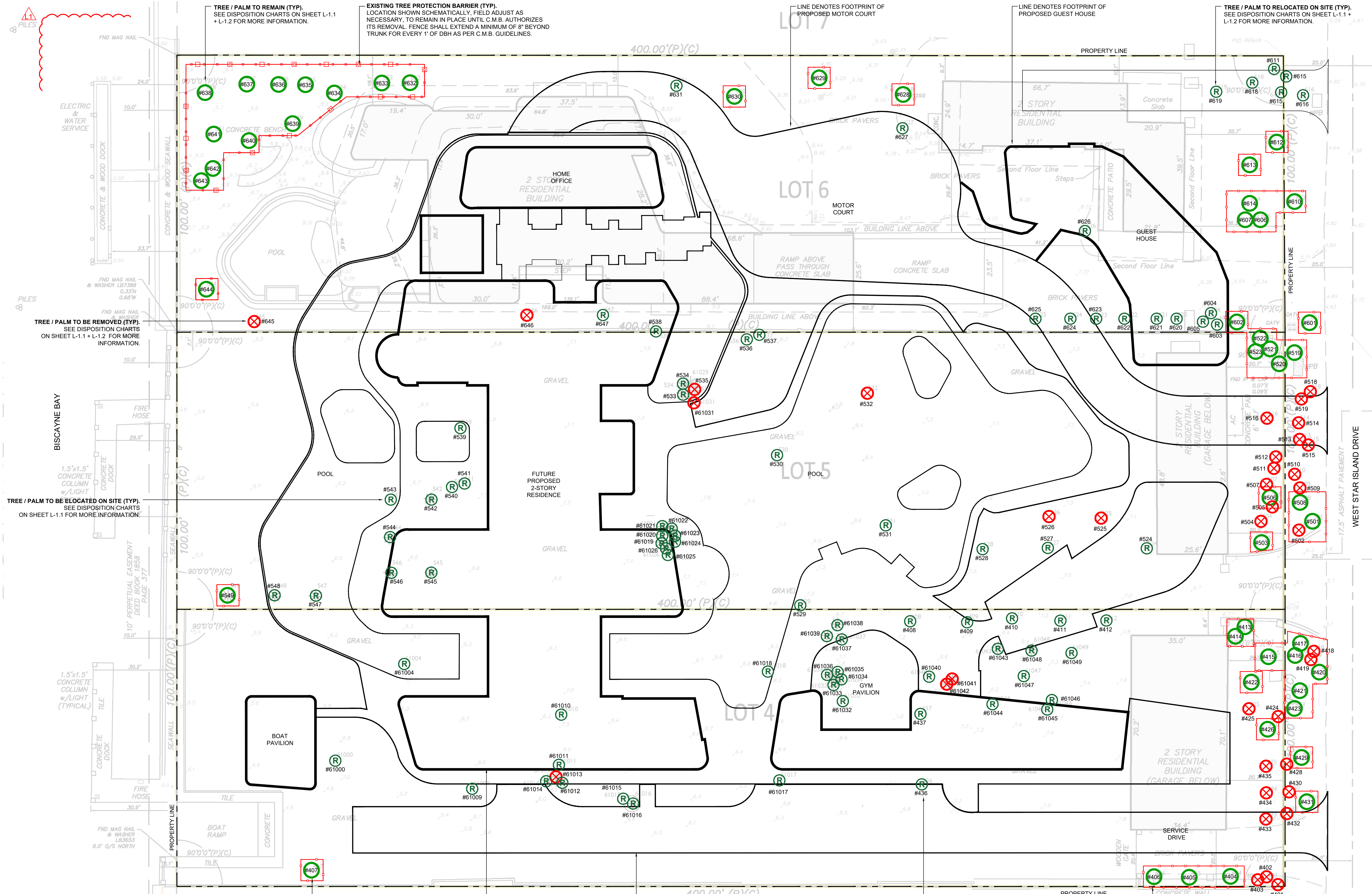
CHRISTOPHER CAWLEY, RLA
Florida License LA 6666786

DATE:

AUGUST 08, 2022

SHEET NO:

L-0.0



EXISTING TREE SURVEY LEGEND

TREE or PALM TO BE REMOVED. SEE CHARTS ON SHEETS L-1.1 + L-1.2 FOR ADDITIONAL INFORMATION

TREE or PALM TO REMAIN. PRESERVE + PROTECT

TREE or PALM TO BE RELOCATED

TREE or PALM PROTECTION FENCE: +/- 1,176 LF

CHRISTOPHER
CAWLEY
LANDSCAPE
ARCHITECTURE

780 NE 69TH STREET
SUITE 200 MIAMI, FL 33138
O 786.536.2961 C 305.979.1585
CHRISTOPHERCAWLEY.COM
Florida Landscape Architecture
Business LLC 26000460

REVISION SCHEDULE:

08.01.22 BD COMMENTS

PROJECT INFO:

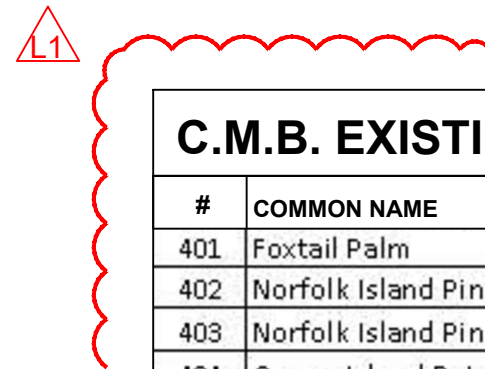
NEW RESIDENCE
4.5 + 4 STAR ISLAND DRIVE
MIAMI BEACH, FL 33139

CHRISTOPHER CAWLEY, RLA
Florida License LA 6660786

DATE:

AUGUST 08, 2022

SHEET NO:



C.M.B. EXISTING TREE INVENTORY + DISPOSITION CHART - 4 STAR ISLAND DRIVE									
#	COMMON NAME	BOTANICAL NAME	D.B.H.(IN)	HEIGHT(FT)	SPREAD(FT)	CONDITION	DISPOSITION	MITIGATION	COMMENTS
401	Foxtail Palm	Wodyetia bifurcata	9	21CT 320A	17	FAIR	REMOVE	1 REP. TREE	IN CONFLICT WITH SITE DESIGN, MITIGATION PROVIDED.
402	Norfolk Island Pine	Araucaria heterophylla	6	24	15	FAIR	REMOVE	N/A	INVASIVE SPECIES, NO MITIGATION REQUIRED.
403	Norfolk Island Pine	Araucaria heterophylla	7	28	15	FAIR	REMOVE	N/A	INVASIVE SPECIES, NO MITIGATION REQUIRED.
404	Canary Island Date Palm	Phoenix canariensis	22	18CT 270A	18	FAIR	REMAIN	N/A	PRESERVE + PROTECT DURING CONSTRUCTION
405	Canary Island Date Palm	Phoenix canariensis	21	15CT 260A	24	FAIR	REMAIN	N/A	PRESERVE + PROTECT DURING CONSTRUCTION
406	Canary Island Date Palm	Phoenix canariensis	23	15CT 240A	20	FAIR	REMAIN	N/A	PRESERVE + PROTECT DURING CONSTRUCTION
407	Canary Island Date Palm	Phoenix canariensis	16	28CT 380A	20	FAIR	REMAIN	N/A	PRESERVE + PROTECT DURING CONSTRUCTION
408	Canary Island Date Palm	Phoenix canariensis	26	25CT 350A	22	FAIR	RELOCATE	N/A	TO BE RELOCATED ON SITE. SEE SHEET L-2.1 FOR RELOCATION
409	Canary Island Date Palm	Phoenix canariensis	28	25CT 350A	22	FAIR	RELOCATE	N/A	TO BE RELOCATED ON SITE. SEE SHEET L-2.1 FOR RELOCATION
410	Canary Island Date Palm	Phoenix canariensis	28	26CT 360A	22	FAIR	RELOCATE	N/A	TO BE RELOCATED ON SITE. SEE SHEET L-2.1 FOR RELOCATION
411	Canary Island Date Palm	Phoenix canariensis	28	24CT 340A	22	FAIR	RELOCATE	N/A	TO BE RELOCATED ON SITE. SEE SHEET L-2.1 FOR RELOCATION
412	Canary Island Date Palm	Phoenix canariensis	26	25CT 350A	22	FAIR	RELOCATE	N/A	TO BE RELOCATED ON SITE. SEE SHEET L-2.1 FOR RELOCATION
413	Gumbo Limbo	Bursera simaruba	19	28	25	FAIR	REMAIN	N/A	PRESERVE + PROTECT DURING CONSTRUCTION
414	Senegal Date Palm Clump	Phoenix reclinata	10	8CT 170A	16	FAIR	REMAIN	N/A	PRESERVE + PROTECT DURING CONSTRUCTION
415	Canary Island Date Palm	Phoenix canariensis	27	25CT 300A	25	FAIR	REMAIN	N/A	PRESERVE + PROTECT DURING CONSTRUCTION
416	Plumeria Spp.	Plumeria spp.	12	14	10	FAIR	REMAIN	N/A	PRESERVE + PROTECT DURING CONSTRUCTION
417	Chinese Fan Palm	Livistona chinensis	8	20CT 270A	11	FAIR	REMAIN	N/A	PRESERVE + PROTECT DURING CONSTRUCTION
418	Bismarck Palm	Bismarckia nobilis	12	25CT 330A	18	FAIR	REMOVE	1 REP. TREE	IN CONFLICT WITH SITE DESIGN, MITIGATION PROVIDED.
419	Chinese Fan Palm	Livistona chinensis	7	5CT 110A	8	FAIR	REMOVE	1 REP. TREE	IN CONFLICT WITH SITE DESIGN, MITIGATION PROVIDED.
420	Chinese Fan Palm	Livistona chinensis	10	20CT 270A	12	FAIR	REMAIN	N/A	PRESERVE + PROTECT DURING CONSTRUCTION
421	Ligustrum	Ligustrum japonicum	6	11	6	FAIR	REMAIN	N/A	PRESERVE + PROTECT DURING CONSTRUCTION
422	Pitch Apple	Clusia rosea	20	35	35	FAIR	REMAIN	N/A	PRESERVE + PROTECT DURING CONSTRUCTION
423	Red Latan Palm	Latania lontaroides	8	14CT 210A	10	FAIR	REMAIN	N/A	PRESERVE + PROTECT DURING CONSTRUCTION
424	Solitaire Palm	Ptychosperma elegans	3	18CT 140A	11	FAIR	REMOVE	1 REP. TREE	IN CONFLICT WITH SITE DESIGN, MITIGATION PROVIDED.
425	Solitaire Palm	Ptychosperma elegans	4	25CT 330A	11	FAIR	REMOVE	1 REP. TREE	IN CONFLICT WITH SITE DESIGN, MITIGATION PROVIDED.
426	Senegal Date Palm Clump	Phoenix reclinata	14	12CT 200A	16	FAIR	REMAIN	N/A	PRESERVE + PROTECT DURING CONSTRUCTION
427	Solitaire Palm	Ptychosperma elegans	3	21CT 300A	7	FAIR	REMOVE	N/A	SMALL PALM, NO MITIGATION REQUIRED.
428	Chinese Fan Palm double	Livistona chinensis	17	24CT 300A	15	FAIR	REMOVE	1 REP. TREE	IN CONFLICT WITH SITE DESIGN, MITIGATION PROVIDED.
429	Canary Island Date Palm	Phoenix canariensis	16	12CT 200A	8	FAIR	REMAIN	N/A	PRESERVE + PROTECT DURING CONSTRUCTION
430	Chinese Fan Palm	Livistona chinensis	8	8CT 170A	15	FAIR	REMOVE	1 REP. TREE	IN CONFLICT WITH SITE DESIGN, MITIGATION PROVIDED.
431	Red Latan Palm	Latania lontaroides	7	12CT 200A	14	FAIR	REMAIN	N/A	PRESERVE + PROTECT DURING CONSTRUCTION
432	Chinese Fan Palm triple	Livistona chinensis	14	23CT 280A	18	FAIR	REMOVE	1 REP. TREE	IN CONFLICT WITH SITE DESIGN, MITIGATION PROVIDED.
433	Chinese Fan Palm	Livistona chinensis	9	23CT 280A	15	FAIR	REMOVE	1 REP. TREE	IN CONFLICT WITH SITE DESIGN, MITIGATION PROVIDED.
434	Weeping Fig	Ficus benjamina	35	40	45	FAIR	REMOVE	35"	IN CONFLICT WITH SITE DESIGN, MITIGATION PROVIDED.
435	Norfolk Island Pine	Araucaria heterophylla	4	33	10	FAIR	REMOVE	N/A	INVASIVE SPECIES, NO MITIGATION REQUIRED.
436	Canary Island Date Palm	Phoenix canariensis	22	27CT 340A	19	FAIR	RELOCATE	N/A	TO BE RELOCATED ON SITE. SEE SHEET L-2.1 FOR RELOCATION
437	Canary Island Date Palm	Phoenix canariensis	24	26CT 350A	18	FAIR	RELOCATE	N/A	TO BE RELOCATED ON SITE. SEE SHEET L-2.1 FOR RELOCATION
61043	PHEONIX SPP.	Phoenix spp.	9	17CT 24 OA	15	FAIR	RELOCATE	N/A	TO BE RELOCATED ON SITE. SEE SHEET L-2.1 FOR RELOCATION
61047	UNKNOWN	UNKNOWN				FAIR	RELOCATE	N/A	TO BE RELOCATED ON SITE. SEE SHEET L-2.1 FOR RELOCATION
61048	BABOOB TREE	Adansonia digitata	37	26	10	FAIR	RELOCATE	N/A	TO BE RELOCATED ON SITE. SEE SHEET L-2.1 FOR RELOCATION
61049	BLUE LATAN PALM	Latania loddigesii	9	16CT 210A	11	FAIR	RELOCATE	N/A	TO BE RELOCATED ON SITE. SEE SHEET L-2.1 FOR RELOCATION
61011	LIVE OAK TREE	Quercus virginiana	25	35	45	FAIR	RELOCATE	N/A	TO BE RELOCATED ON SITE. SEE SHEET L-2.1 FOR RELOCATION
61017	LIVE OAK TREE	Quercus virginiana	52	40	55	FAIR	RELOCATE	N/A	TO BE RELOCATED ON SITE. SEE SHEET L-2.1 FOR RELOCATION
61018	SEAGRAPE TRE	Coccoloba uvifera	47	35	40	FAIR	RELOCATE	N/A	TO BE RELOCATED ON SITE. SEE SHEET L-2.1 FOR RELOCATION
61013	COCONUT PALM	Cocos nucifera	N/A	7 OA	7	FAIR	REMOVE	N/A	SMALL PALM, NO MITIGATION REQUIRED.
61016	CHINESE FAN PALM	Livistona chinensis	14	30CT 360A	9	FAIR	RELOCATE	N/A	TO BE RELOCATED ON SITE. SEE SHEET L-2.1 FOR RELOCATION
61033	PHEONIX SPP CLUMP	Phoenix spp.	20	24CT 30 OA	22	FAIR	RELOCATE	N/A	TO BE RELOCATED ON SITE. SEE SHEET L-2.1 FOR RELOCATION
61034	PART OF PALM #61033								
61035	PART OF PALM #61033								
61036	PART OF PALM #61033								
61037	PHEONIX SPP.	Phoenix spp.	9	12CT 210A	16	FAIR	RELOCATE	N/A	TO BE RELOCATED ON SITE. SEE SHEET L-2.1 FOR RELOCATION
61038	PHEONIX SPP.	Phoenix spp.	11	12CT 210A	16	FAIR	RELOCATE	N/A	TO BE RELOCATED ON SITE. SEE SHEET L-2.1 FOR RELOCATION
61039	PHEONIX SPP.	Phoenix spp.	12	14CT 230A	18	FAIR	RELOCATE	N/A	TO BE RELOCATED ON SITE. SEE SHEET L-2.1 FOR RELOCATION
61000	SAUSAGE TREE	Kigelia africana	31	28	35	FAIR	RELOCATE	N/A	TO BE RELOCATED ON SITE. SEE SHEET L-2.1 FOR RELOCATION
61004	LIVE OAK TREE	Quercus virginiana	31	37	55	FAIR	RELOCATE	N/A	TO BE RELOCATED ON SITE. SEE SHEET L-2.1 FOR RELOCATION
61040	PONGAM TREE	Pongamia pinnata	60	36	40	FAIR	RELOCATE	N/A	TO BE RELOCATED ON SITE. SEE SHEET L-2.1 FOR RELOCATION
61041	MONTGOMERY PALM	Veitchia arecina	4	7CT 140A	10	FAIR	REMOVE	N/A	SMALL PALM, NO MITIGATION REQUIRED.
61042	MONTGOMERY PALM	Veitchia arecina	N/A	4CT 90A	7	FAIR	REMOVE	N/A	SMALL PALM, NO MITIGATION REQUIRED.
61044	MAHOGANY TREE	Swietenia mahoganii	20	35	30	FAIR	RELOCATE	N/A	TO BE RELOCATED ON SITE. SEE SHEET L-2.1 FOR RELOCATION
61045	LIVE OAK TREE	Quercus virginiana	12	21	17	FAIR	RELOCATE	N/A	TO BE RELOCATED ON SITE. SEE SHEET L-2.1 FOR RELOCATION
61046	LIVE OAK TREE	Quercus virginiana	3	17	6	FAIR	RELOCATE	N/A	TO BE RELOCATED ON SITE. SEE SHEET L-2.1 FOR RELOCATION
61009	UNKNOWN	UNKNOWN	--	--	--	FAIR	RELOCATE	N/A	TO BE RELOCATED ON SITE.
61010	UNKNOWN	UNKNOWN	--	--	--	FAIR	RELOCATE	N/A	TO BE RELOCATED ON SITE.
61012	UNKNOWN	UNKNOWN	--	--	--	FAIR	RELOCATE	N/A	TO BE RELOCATED ON SITE.
61014	UNKNOWN	UNKNOWN	--	--	--	FAIR	RELOCATE	N/A	TO BE RELOCATED ON SITE.
61015	UNKNOWN	UNKNOWN	--	--	--	FAIR	RELOCATE	N/A	TO BE RELOCATED ON SITE.
61032	UNKNOWN	UNKNOWN	--	--	--	FAIR	RELOCATE	N/A	TO BE RELOCATED ON SITE.

C.M.B. EXISTING TREE INVENTORY + DISPOSITION CHART - 5 STAR ISLAND DRIVE									
#	COMMON NAME	BOTANICAL NAME	D.B.H.(IN)	HEIGHT(FT)	SPREAD(FT)	CONDITION	DISPOSITION	MITIGATION	COMMENTS
501	Red Latan Palm	Latania lontaroides	8	10CT 180A	12	FAIR	REMAIN	N/A	PRESERVE + PROTECT DURING CONSTRUCTION
502	Chinese Fan Palm	Livistona chinensis	7	15CT 200A	10	FAIR	REMOVE	1 REP. TREE	IN CONFLICT WITH SITE DESIGN, MITIGATION PROVIDED.
503	Canary Island Date Palm	Phoenix canariensis	24	25CT 360A	22	FAIR	REMAIN	N/A	PRESERVE + PROTECT DURING CONSTRUCTION
504	Foxtail Palm	Wodyetia bifurcata	9	26CT 300A	14	FAIR	REMOVE	1 REP. TREE	IN CONFLICT WITH SITE DESIGN, MITIGATION PROVIDED.
505	Foxtail Palm	Wodyetia bifurcata	9	28CT 360A	17	FAIR	REMOVE	1 REP. TREE	IN CONFLICT WITH SITE DESIGN, MITIGATION PROVIDED.
506	Pitch Apple	Clusia rosea	17	35	25	FAIR	REMAIN	N/A	PRESERVE + PROTECT DURING CONSTRUCTION
507	Foxtail Palm	Wodyetia bifurcata	9	28CT 360A	17	FAIR	REMOVE	1 REP. TREE	IN CONFLICT WITH SITE DESIGN, MITIGATION PROVIDED.
508	Live Oak	Quercus virginiana	13	24	30	FAIR	REMAIN	N/A	PRESERVE + PROTECT DURING CONSTRUCTION
509	Chinese Fan Palm	Livistona chinensis	7	17CT 260A	12	FAIR	REMOVE	1 REP. TREE	IN CONFLICT WITH SITE DESIGN, MITIGATION PROVIDED.
510	Montgomery Palm	Veitchia arecina	3	18CT 270A	11	FAIR	REMOVE	N/A	SMALL PALM, NO MITIGATION REQUIRED.
511	Chinese Fan Palm double	Livistona chinensis	6	8CT 160A	10	FAIR	REMOVE	1 REP. TREE	IN CONFLICT WITH SITE DESIGN, MITIGATION PROVIDED.
512	Chinese Fan Palm double	Livistona chinensis	14	23CT 280A	14	FAIR	REMOVE	1 REP. TREE	IN CONFLICT WITH SITE DESIGN, MITIGATION PROVIDED.
513	Montgomery Palm	Veitchia arecina	3	11CT 180A	8	FAIR	REMOVE	N/A	SMALL PALM, NO MITIGATION REQUIRED.
514	Red Latan Palm	Latania lontaroides	8	16CT 240A	10	FAIR	REMOVE	1 REP. TREE	IN CONFLICT WITH SITE DESIGN, MITIGATION PROVIDED.
515	Canary Island Date Palm	Phoenix canariensis	12	23CT 320A	14	FAIR	REMOVE	1 REP. TREE	IN CONFLICT WITH SITE DESIGN, MITIGATION PROVIDED.
516	Senegal Date Palm	Phoenix reclinata	90	30CT 380A	30	FAIR	REMOVE	1 REP. TREE	IN CONFLICT WITH SITE DESIGN, MITIGATION PROVIDED.
517	Chinese Fan Palm double	Livistona chinensis	12	18CT 240A	14	FAIR	REMOVE	1 REP. TREE	IN CONFLICT WITH SITE DESIGN, MITIGATION PROVIDED.
518	Chinese Fan Palm double	Livistona chinensis	14	19CT 260A	14	FAIR	REMOVE	1 REP. TREE	IN CONFLICT WITH SITE DESIGN, MITIGATION PROVIDED.
519	Chinese Fan Palm	Livistona chinensis	8	19CT 260A	12	FAIR	REMAIN	N/A	PRESERVE + PROTECT DURING CONSTRUCTION
520	Canary Island Date Palm	Phoenix canariensis	21	30CT 400A	24	FAIR	REMAIN	N/A	PRESERVE + PROTECT DURING CONSTRUCTION
521	Pitch Apple	Clusia rosea	6	26	20	FAIR	REMAIN	N/A	PRESERVE + PROTECT DURING CONSTRUCTION
522	Solitaire Palm	Ptychosperma elegans	3	18CT 260A	11	FAIR	REMAIN	N/A	PRESERVE + PROTECT DURING CONSTRUCTION
523	Solitaire Palm	Ptychosperma elegans	3	24CT 320A	13	FAIR	REMAIN	N/A	PRESERVE + PROTECT DURING CONSTRUCTION
524	Canary Island Date Palm	Phoenix canariensis	22	24CT 350A	26	FAIR	RELOCATE	N/A	TO BE RELOCATED ON SITE. SEE SHEET L-2.1 FOR RELOCATION
525	Weeping Fig	Ficus benjamina	25	17	10	FAIR	REMOVE	25"	IN CONFLICT WITH SITE DESIGN, MITIGATION PROVIDED.
526	Weeping Fig	Ficus benjamina	27	17	10	FAIR	REMOVE	27"	IN CONFLICT WITH SITE DESIGN, MITIGATION PROVIDED.
527	Canary Island Date Palm	Phoenix canariensis	26	22CT 300A	24	FAIR	RELOCATE	N/A	TO BE RELOCATED ON SITE. SEE SHEET L-2.1 FOR RELOCATION
528	Canary Island Date Palm	Phoenix canariensis	22	22CT 300A	24	FAIR	RELOCATE	N/A	TO BE RELOCATED ON SITE. SEE SHEET L-2.1 FOR RELOCATION
529	Canary Island Date Palm	Phoenix canariensis	27	25CT 340A	18	FAIR	RELOCATE	N/A	TO BE RELOCATED ON SITE. SEE SHEET L-2.1 FOR RELOCATION
530	Banyan	Ficus benghalensis	200	50	72	FAIR	RELOCATE	N/A	TO BE RELOCATED ON SITE. SEE SHEET L-2.1 FOR RELOCATION
531	Cliff Date Palm	Phoenix rupicola	10	10CT 180A	14	FAIR	RELOCATE	N/A	TO BE RELOCATED ON SITE. SEE SHEET L-2.1 FOR RELOCATION
532	Norfolk Island Pine	Araucaria heterophylla	9	33	12	FAIR	REMOVE	N/A	INVASIVE SPECIES, NO MITIGATION REQUIRED.
533	Phoenix spp clump	Phoenix spp.	80	22CT 300A	20	FAIR	RELOCATE	N/A	TO BE RELOCATED ON SITE. SEE SHEET L-2.1 FOR RELOCATION
534	Phoenix spp clump	Phoenix spp.	22	24CT 300A	22	FAIR	RELOCATE	N/A	TO BE RELOCATED ON SITE. SEE SHEET L-2.1 FOR RELOCATION
535	Phoenix spp clump	Phoenix spp.	20	20CT 280A	22	FAIR	REMOVE	1 REP. TREE	IN CONFLICT WITH SITE DESIGN, MITIGATION PROVIDED.
536	Royal Palm	Roystonea regia	20	52CT 620A	18	FAIR	RELOCATE	N/A	TO BE RELOCATED ON SITE. SEE SHEET L-2.1 FOR RELOCATION
537	Royal Palm	Roystonea regia	18	28CT 380A	20	FAIR	RELOCATE	N/A	TO BE RELOCATED ON SITE. SEE SHEET L-2.1 FOR RELOCATION
538	Royal Palm	Roystonea regia	18	33CT 400A	24	FAIR	RELOCATE	N/A	TO BE RELOCATED ON SITE. SEE SHEET L-2.1 FOR RELOCATION
539	Senegal Date Palm	Phoenix reclinata	12	12CT 200A	14	FAIR	RELOCATE	N/A	TO BE RELOCATED ON SITE. SEE SHEET L-2.1 FOR RELOCATION
540	Senegal Date Palm	Phoenix reclinata	8	14CT 220A	15	FAIR	RELOCATE	N/A	TO BE RELOCATED ON SITE. SEE SHEET L-2.1 FOR RELOCATION
541	Senegal Date Palm	Phoenix reclinata	5	15CT 200A	12	FAIR	RELOCATE	N/A	TO BE RELOCATED ON SITE. SEE SHEET L-2.1 FOR RELOCATION
542	Medjool	Phoenix dactylifera	18	40CT 530A	26	FAIR	RELOCATE	N/A	TO BE RELOCATED ON SITE. SEE SHEET L-2.1 FOR RELOCATION
543	Medjool	Phoenix dactylifera	14	37CT 430A	18	FAIR	RELOCATE	N/A	TO BE RELOCATED ON SITE. SEE SHEET L-2.1 FOR RELOCATION
544	Medjool	Phoenix dactylifera	20	39CT 430A	25	FAIR	RELOCATE	N/A	TO BE RELOCATED ON SITE. SEE SHEET L-2.1 FOR RELOCATION
545	Medjool	Phoenix dactylifera	16	38CT 470A	24	FAIR	RELOCATE	N/A	TO BE RELOCATED ON SITE. SEE SHEET L-2.1 FOR RELOCATION
546	Medjool	Phoenix dactylifera	18	39CT 430A	18	FAIR	RELOCATE	N/A	TO BE RELOCATED ON SITE. SEE SHEET L-2.1 FOR RELOCATION
547	Medjool	Phoenix dactylifera	13	37CT 460A	23	FAIR	RELOCATE	N/A	TO BE RELOCATED ON SITE. SEE SHEET L-2.1 FOR RELOCATION
548	Medjool	Phoenix dactylifera	14	23CT 330A	25	FAIR	RELOCATE	N/A	TO BE RELOCATED ON SITE. SEE SHEET L-2.1 FOR RELOCATION
549	Medjool	Phoenix dactylifera	14	28CT 350A	25	FAIR	REMAIN	N/A	PRESERVE + PROTECT DURING CONSTRUCTION
61019	PHEONIX SPP CLUMP	Phoenix spp.	80	22CT 300A	20	FAIR	RELOCATE	N/A	TO BE RELOCATED ON SITE. SEE SHEET L-2.1 FOR RELOCATION
61020	PART OF PALM #61019								
61021	PART OF PALM #61019								
61022	PART OF PALM #61019								
61023	PART OF PALM #61019								
61024	PART OF PALM #61019								
61025	PART OF PALM #61019								
61026	PART OF PALM #61019								
61031	SAGO PALM	Cycas ruminiana	N/A	3 CT 5 OA	4	FAIR	REMOVE	N/A	SMALL PALM, NO MITIGATION REQUIRED.

REVISION SCHEDULE:

08.01.22 BD COMMENTS

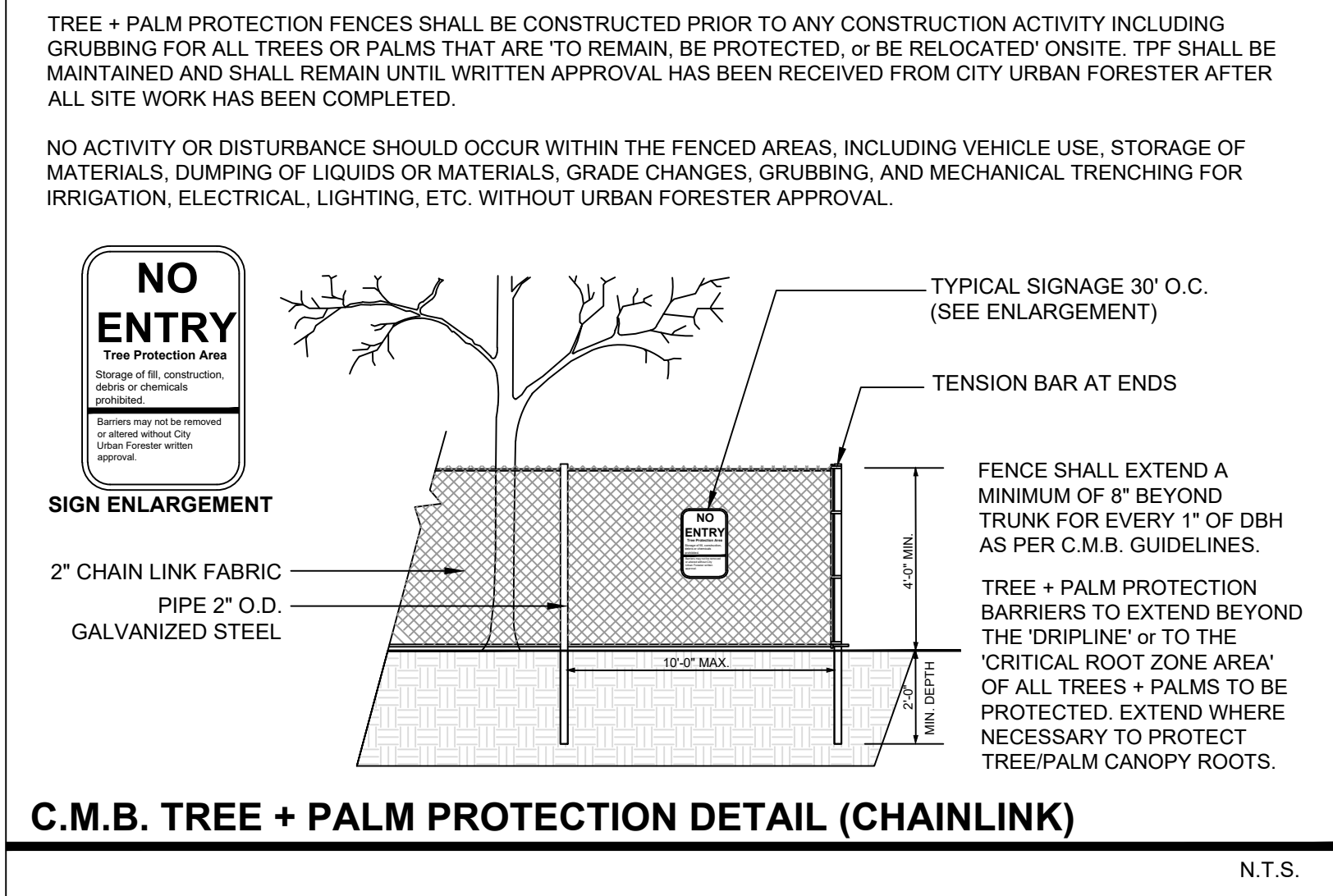
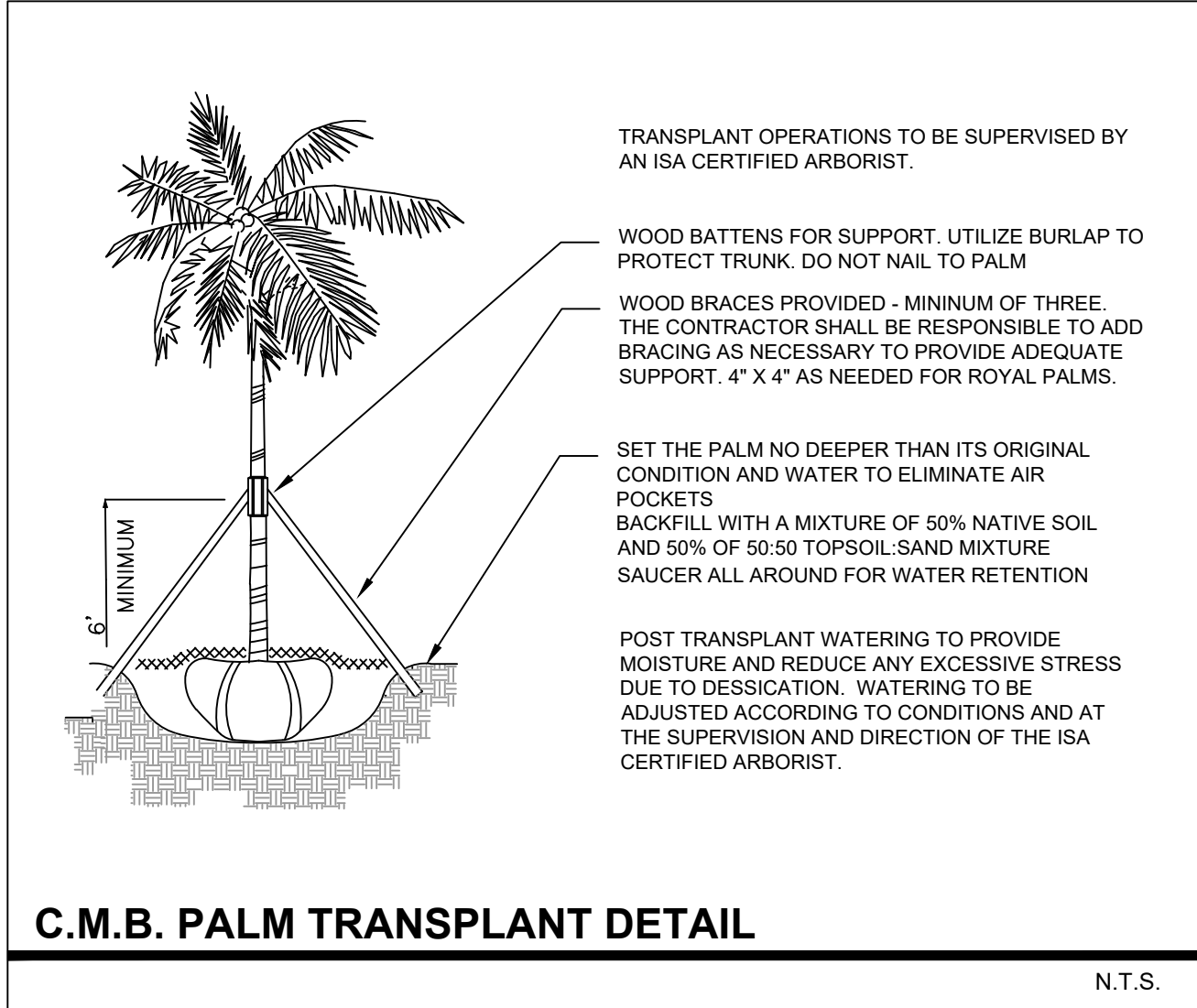
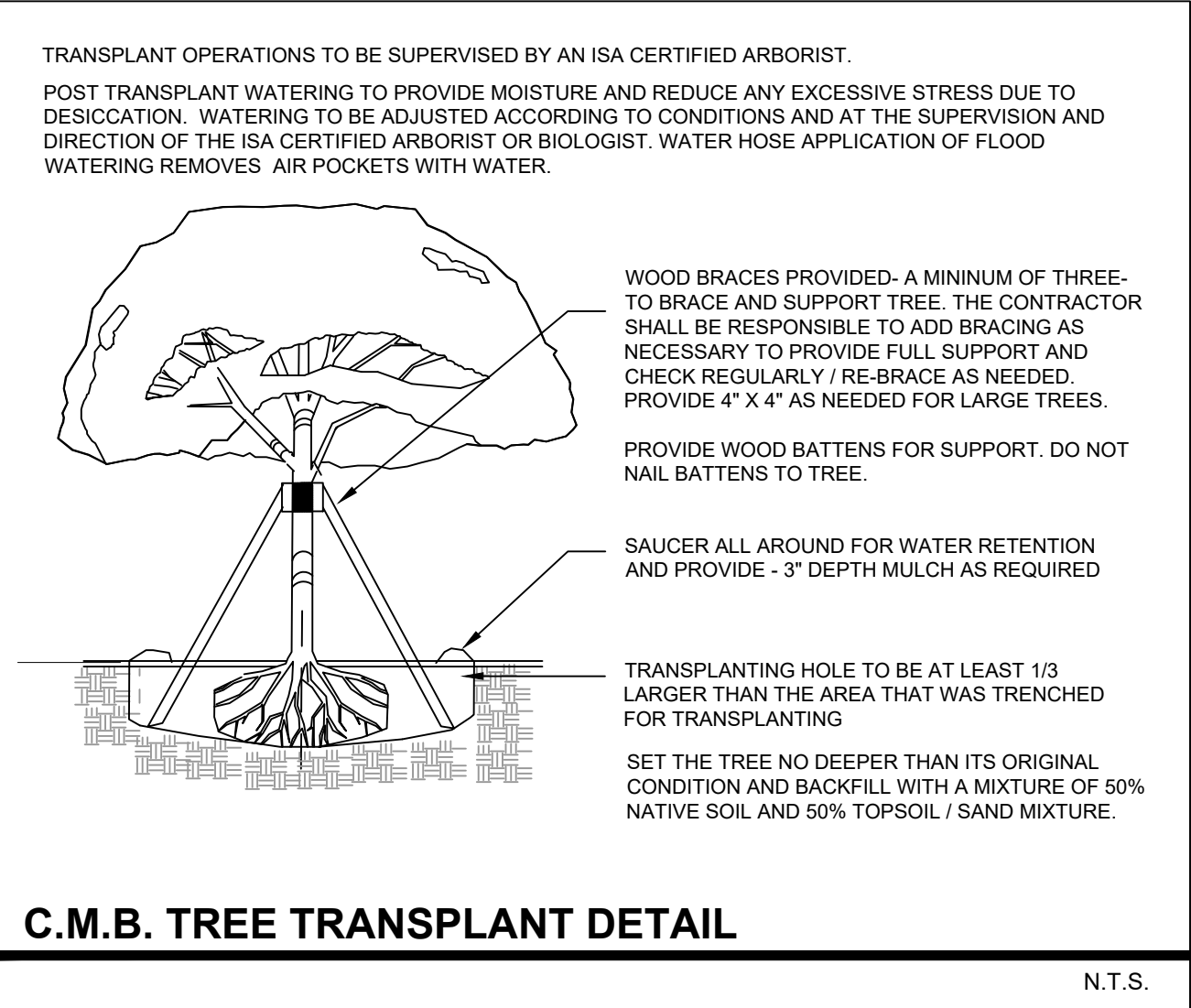
PROJECT INFO:

DATE:

<

C.M.B. CHAPTER 46, DIVISION 2 - TREE INVENTORY + DISPOSITION PLAN NOTES

1. THIS 'EXISTING TREE INVENTORY + DISPOSITION PLAN' HAS BEEN PREPARED IN ACCORDANCE WITH THE CITY OF MIAMI BEACH, CHAPTER 46 - ENVIRONMENT, DIVISION 2, TREE PRESERVATION and PROTECTION ORDINANCE.
2. EXISTING TREE, PALM, AND VEGETATION INFORMATION AS INDICATED HAS BEEN PREPARED AS AN OVERLAY ON THE SURVEY PREPARED BY COLLIERS ENGINEERING & DESIGN, INC . DATED 08.04.22 THE INFORMATION AS PRESENTED HEREIN HAS BEEN FIELD VERIFIED BY THE LANDSCAPE ARCHITECT ON 08.08.22
3. MIAMI BEACH P+Z MUST APPROVE LANDSCAPE PLANS PRIOR TO REMOVING ANY TREES OR PALMS WITH A DBH BETWEEN 6" AND 12" INCHES. A WRITTEN TREE REMOVAL PERMIT IS REQUIRED FROM CITY OF MIAMI BEACH URBAN FORESTRY / P.W FOR THE REMOVAL OF TREES / PALMS WITH A DBH GREATER THAN 12" INCHES OR IN THE R.O.W.
4. THE OWNER RESERVES THE RIGHT TO REMOVE ANY VEGETATION NOT LOCATED WITHIN THE CITY R.O.W. w/ a D.B.H. OF LESS THAN 6" WITHOUT OBTAINING A TREE REMOVAL PERMIT.
5. THERE ARE NO TREES or PALMS LOCATED ON THIS PROPERTY THAT WILL REQUIRE TEMPORARY IRRIGATION. ALL EXISTING TREES + PALMS ARE MATURE AND ARE CURRENTLY THRIVING WITHOUT SUPPLEMENTAL IRRIGATION WATER.



C.M.B. EXISTING TREE INVENTORY + DISPOSITION CHART - 6 STAR ISLAND DRIVE

#	COMMON NAME	BOTANICAL NAME	D.B.H.(IN)	HEIGHT(FT)	SPREAD(FT)	CONDITION	DISPOSITION	MITIGATION	COMMENTS
601	Simpson's Stopper	Myrcianthes fragrans	15	14	12	FAIR	REMAIN	N/A	PRESERVE + PROTECT DURING CONSTRUCTION
602	Black Calabash	Amphitecna latifolia	8	20	18	FAIR	REMAIN	N/A	PRESERVE + PROTECT DURING CONSTRUCTION
603	Black Calabash	Amphitecna latifolia	5	17	10	FAIR	RELOCATE	N/A	TO BE RELOCATED ON SITE. SEE SHEET L-2.1 FOR RELOCATION
604	Satake ntia Palm	Satakenbia lukuensis	11	17CT 260A	18	FAIR	RELOCATE	N/A	TO BE RELOCATED ON SITE. SEE SHEET L-2.1 FOR RELOCATION
605	Sagisi Palm Double	Heterospathe elata	14	23CT 320A	18	FAIR	RELOCATE	N/A	TO BE RELOCATED ON SITE. SEE SHEET L-2.1 FOR RELOCATION
606	Dypsis spp	Dypsis spp	14	14CT 240A	18	FAIR	REMAIN	N/A	PRESERVE + PROTECT DURING CONSTRUCTION
607	Royal Palm	Roystonea regia	19	37CT 450A	22	FAIR	REMAIN	N/A	PRESERVE + PROTECT DURING CONSTRUCTION
608	Wild Cinnamon	Canela winterana	3	14	8	FAIR	REMOVE	3"	IN CONFLICT WITH SITE DESIGN, MITIGATION PROVIDED.
609	Wild Cinnamon	Canela winterana	3	10	7	FAIR	REMOVE	3"	SMALL TREE, NO MITIGATION REQUIRED.
610	Pigeon Plum	Coccoloba diversifolia	40	35	35	FAIR	REMAIN	N/A	PRESERVE + PROTECT DURING CONSTRUCTION
611	Royal Palm	Roystonea regia	20	43CT 520A	20	FAIR	RELOCATE	N/A	TO BE RELOCATED ON SITE. SEE SHEET L-2.1 FOR RELOCATION
612	Pitch Apple	Clusia rosea	40	40	35	FAIR	REMAIN	N/A	PRESERVE + PROTECT DURING CONSTRUCTION
613	dypsis spp	Dypsis spp	8	18CT 250A	14	FAIR	REMAIN	N/A	PRESERVE + PROTECT DURING CONSTRUCTION
614	Royal Palm	Roystonea regia	16	34CT 40A	22	FAIR	REMAIN	N/A	PRESERVE + PROTECT DURING CONSTRUCTION
615	Satake ntia Palm	Satakenbia lukuensis	11	17CT 260A	20	FAIR	RELOCATE	N/A	TO BE RELOCATED ON SITE. SEE SHEET L-2.1 FOR RELOCATION
616	Simpson's Stopper	Myrcianthes fragrans	16	11	12	FAIR	RELOCATE	N/A	TO BE RELOCATED ON SITE. SEE SHEET L-2.1 FOR RELOCATION
617	Royal Palm	Roystonea regia	20	43CT 520A	20	FAIR	RELOCATE	N/A	TO BE RELOCATED ON SITE. SEE SHEET L-2.1 FOR RELOCATION
618	Satake ntia Palm	Satakenbia lukuensis	11	17CT 260A	20	FAIR	RELOCATE	N/A	TO BE RELOCATED ON SITE. SEE SHEET L-2.1 FOR RELOCATION
619	Satake ntia Palm	Satakenbia lukuensis	11	19CT 330A	20	FAIR	RELOCATE	N/A	TO BE RELOCATED ON SITE. SEE SHEET L-2.1 FOR RELOCATION
620	Sagisi Palm Triple	Heterospathe elata	22	22CT 300A	20	FAIR	RELOCATE	N/A	TO BE RELOCATED ON SITE. SEE SHEET L-2.1 FOR RELOCATION
621	Travelers Palm	Ravenala madagascariensis	95	30QA	25	FAIR	RELOCATE	N/A	TO BE RELOCATED ON SITE. SEE SHEET L-2.1 FOR RELOCATION
622	Travelers Palm	Ravenala madagascariensis	110	34QA	25	FAIR	RELOCATE	N/A	TO BE RELOCATED ON SITE. SEE SHEET L-2.1 FOR RELOCATION
623	Travelers Palm	Ravenala madagascariensis	40	34	25	FAIR	RELOCATE	N/A	TO BE RELOCATED ON SITE. SEE SHEET L-2.1 FOR RELOCATION
624	Travelers Palm	Ravenala madagascariensis	140	35	35	FAIR	RELOCATE	N/A	TO BE RELOCATED ON SITE. SEE SHEET L-2.1 FOR RELOCATION
625	Travelers Palm	Ravenala madagascariensis	70	35	25	FAIR	RELOCATE	N/A	TO BE RELOCATED ON SITE. SEE SHEET L-2.1 FOR RELOCATION
626	Satake ntia Palm	Satakenbia lukuensis	11	19CT 280A	24	FAIR	RELOCATE	N/A	TO BE RELOCATED ON SITE. SEE SHEET L-2.1 FOR RELOCATION
627	Satake ntia Palm	Satakenbia lukuensis	11	19CT 280A	24	FAIR	RELOCATE	N/A	TO BE RELOCATED ON SITE. SEE SHEET L-2.1 FOR RELOCATION
628	Pitch Apple	Clusia rosea	30	28	24	FAIR	REMAIN	N/A	PRESERVE + PROTECT DURING CONSTRUCTION
629	Satake ntia Palm double	Satakenbia lukuensis	9	10CT 160A	11	FAIR	REMAIN	N/A	PRESERVE + PROTECT DURING CONSTRUCTION
630	Mahogany	Swietenia mahagoni	72	55	70	FAIR	REMAIN	N/A	PRESERVE + PROTECT DURING CONSTRUCTION
631	Verawood	Bulnesia arborea	12	27	22	FAIR	RELOCATE	N/A	TO BE RELOCATED ON SITE. SEE SHEET L-2.1 FOR RELOCATION
632	Black Calabash	Amphitecna latifolia	8	16	12	FAIR	REMAIN	N/A	PRESERVE + PROTECT DURING CONSTRUCTION
633	Black Calabash	Amphitecna latifolia	11	16	12	FAIR	REMAIN	N/A	PRESERVE + PROTECT DURING CONSTRUCTION
634	Silk Floss Tree	Chorisia speciosa	18	28	24	FAIR	REMAIN	N/A	PRESERVE + PROTECT DURING CONSTRUCTION
635	Black Calabash	Amphitecna latifolia	7	16	12	FAIR	REMAIN	N/A	PRESERVE + PROTECT DURING CONSTRUCTION
636	Black Calabash	Amphitecna latifolia	11	20	18	FAIR	REMAIN	N/A	PRESERVE + PROTECT DURING CONSTRUCTION
637	Royal Palm	Roystonea regia	19	40CT 550A	24	FAIR	REMAIN	N/A	PRESERVE + PROTECT DURING CONSTRUCTION
638	Royal Palm	Roystonea regia	18	40CT 550A	24	FAIR	REMAIN	N/A	PRESERVE + PROTECT DURING CONSTRUCTION
639	Coconut Palm	Cocos nucifera	10	32CT 450A	24	FAIR	REMAIN	N/A	PRESERVE + PROTECT DURING CONSTRUCTION
640	Coconut Palm	Cocos nucifera	11	32CT 450A	24	FAIR	REMAIN	N/A	PRESERVE + PROTECT DURING CONSTRUCTION
641	Coconut Palm	Cocos nucifera	12	32CT 450A	24	FAIR	REMAIN	N/A	PRESERVE + PROTECT DURING CONSTRUCTION
642	Coconut Palm	Cocos nucifera	8	40CT 520A	24	FAIR	REMAIN	N/A	PRESERVE + PROTECT DURING CONSTRUCTION
643	Coconut Palm	Cocos nucifera	9	45CT 570A	24	FAIR	REMAIN	N/A	PRESERVE + PROTECT DURING CONSTRUCTION
644	Silver Buttonwood	Conocarpus erectus var. serik	15	12	14	FAIR	RELOCATE	N/A	TO BE RELOCATED ON SITE. SEE SHEET L-2.1 FOR RELOCATION
645	Adonidia Palm	Veitchia merrillii	4	15CT 180A	5	FAIR	REMOVE	1 REP. TREE	IN CONFLICT WITH SITE DESIGN, MITIGATION PROVIDED.
646	Carrotwood	Cupaniopsis anacardioides	32	40	30	FAIR	REMOVE	32"	IN CONFLICT WITH SITE DESIGN, MITIGATION PROVIDED.
647	Areca Palm	Chrysalidocarpus lutescens	25	22	14	FAIR	RELOCATE	N/A	TO BE RELOCATED ON SITE. SEE SHEET L-2.1 FOR RELOCATION
TOTAL TREE DBH LOSS: 122" + THE REMOVAL OF (24) PALMS * TREE MITIGATION REQUIRED: (41) REPLACEMENT TREES @ 12"HT x 2" DBH X 6' SPREAD PALM MITIGATION REQUIRED: (24) REPLACEMENT TREES @ 12"HT x 2" DBH X 6' SPREAD									

CH 46 TREE PRESERVATION + PROTECTION / TREE + PALM MITIGATION SUMMARY

MIAMI BEACH LANDSCAPE ORDINANCE CHAPTER 46 ENVIRONMENT

TREES		
REMOVED (TOTAL DBH OF TREES)	REPLACEMENT TREES REQUIRED	REPLACEMENT TREES PROVIDED
122" OF DBH	41 @ 12' HEIGHT + 2" DBH + 6' SPREAD OR 21 @ 16' HEIGHT + 4" DBH + 8' SPREAD	41 REPLACEMENT TREES PROVIDED @ 12' HEIGHT + 2" DBH + 6' SPREAD BREAKDOWN: (33) NATIVE SPANISH STOPPER TREES @ 12' HEIGHT + 3" DBH + 6' SPREAD = 33 REPLACEMENT TREES (4) NATIVE SILVER BUTTONWOOD TREES @ 14' HEIGHT + 4" DBH + 8' SPREAD = 4 REPLACEMENT TREES
PALMS		
REMOVED (TOTAL PALMS)	REPLACEMENT TREES REQUIRED	REPLACEMENT TREES PROVIDED
24	24 @ 12' HEIGHT + 2" DBH + 6' SPREAD OR 12 @ 16' HEIGHT + 4" DBH + 8' SPREAD	25 REPLACEMENT TREES PROVIDED @ 12' HEIGHT + 2" DBH + 6' SPREAD BREAKDOWN: (2) NATIVE SILVER BUTTONWOOD TREES @ 14' HEIGHT + 4" DBH + 8' SPREAD = 4 REPLACEMENT TREES (6) VERAWOOD TREES @ 18' HEIGHT + 4" DBH + 8' SPREAD = 12 REPLACEMENT TREES (7) NATIVE SILVER BUTTONWOOD TREES @ 12' HEIGHT + 2" DBH + 6' SPREAD = 6 REPLACEMENT TREES (1) NATIVE GUMBO LIMBO TREES @ 20' HEIGHT + 6" DBH + 10' SPREAD = 3 REPLACEMENT TREES

TREE DISPOSITION SUMMARY

	TOTAL	REMAIN	REMOVE	RELOCATE
TREES	42	17	10	15
PALMS	113	31	35	51

REVISION SCHEDULE:

08.01.22 BD COMMENTS

PROJECT INFO:

DATE:

AUGUST 08, 2022

SHEET NO:

NEW RESIDENCE
4, 5 + 6 STAR ISLAND DRIVE
MIAMI BEACH, FL 33139

CHRISTOPHER CAWLEY, RLA
Florida License LA 6666795

DATE: _____

AUGUST 08, 2022

SHEET NO:

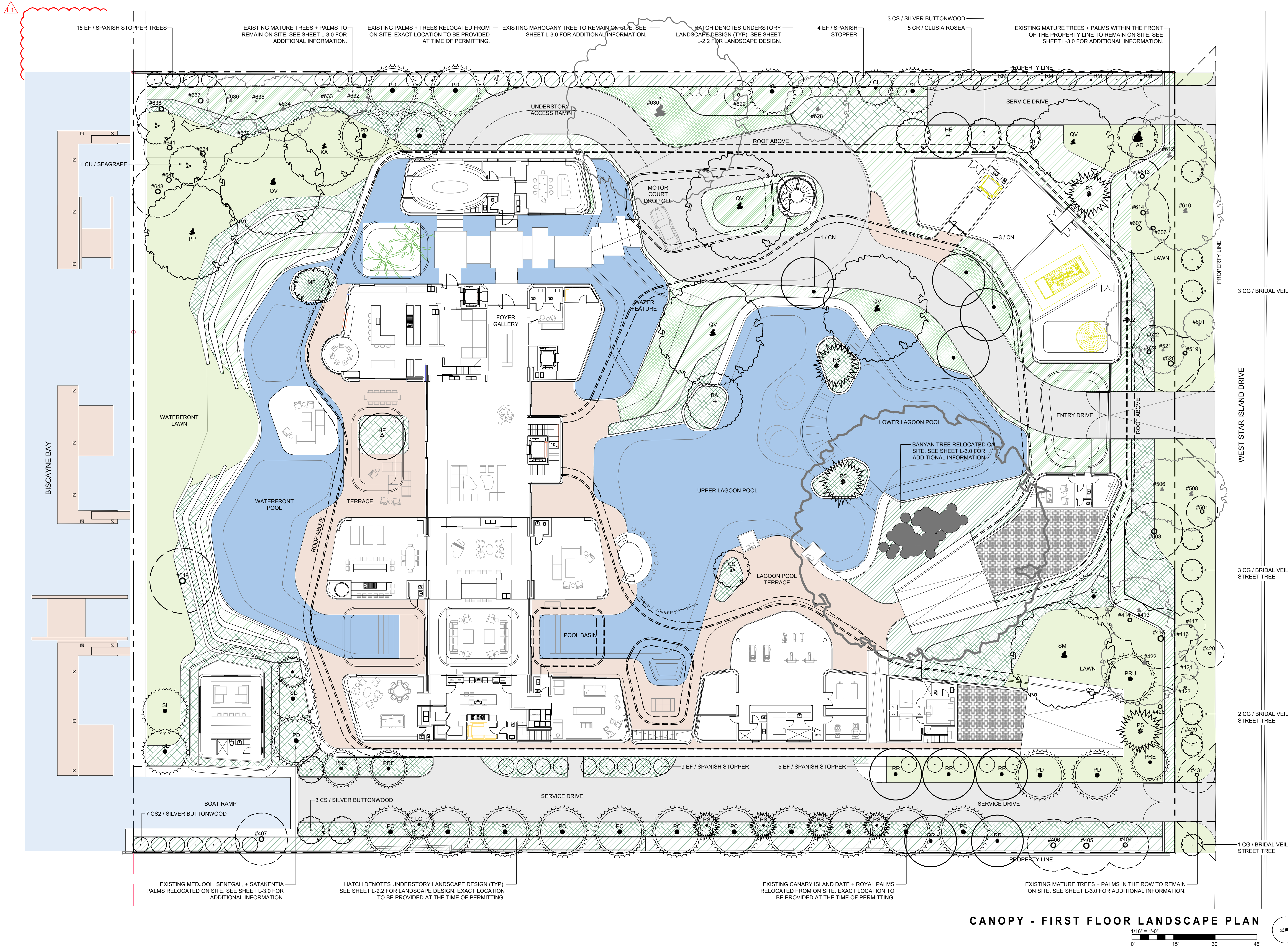
LANDSCAPE MASTER PLAN

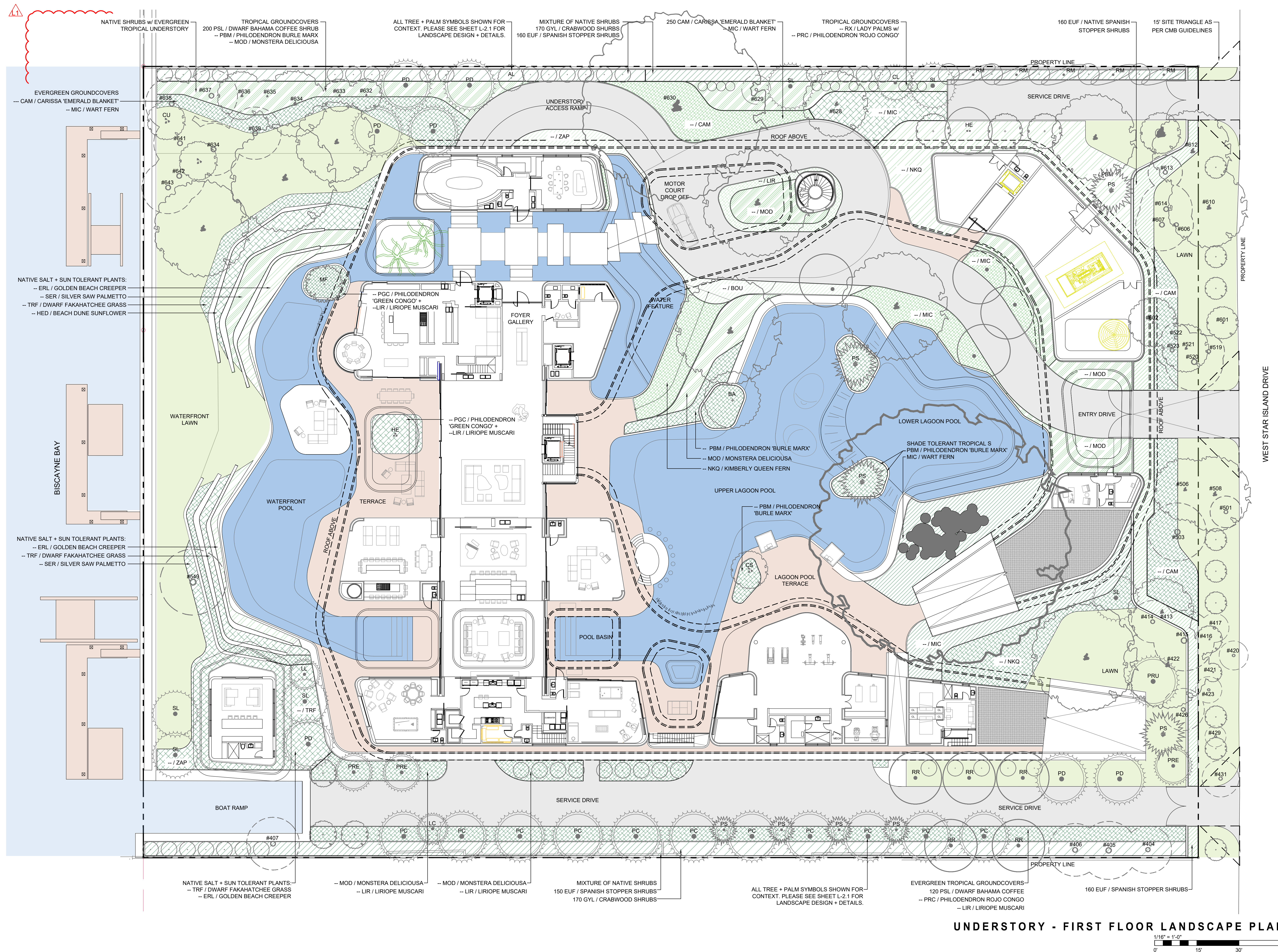
1/16" = 1'-0"

0' 15' 30' 45'



L-2.0





UNDERSTORY - FIRST FLOOR LANDSCAPE PLAN

1/16" = 1'-0"



0' 15' 30'



REVISION SCHEDULE:

08.01.22 BD COMMENTS

PROJECT INFO:

NEW RESIDENCE
4.5 + 4 STAR ISLAND DRIVE
MIAMI BEACH, FL 33139

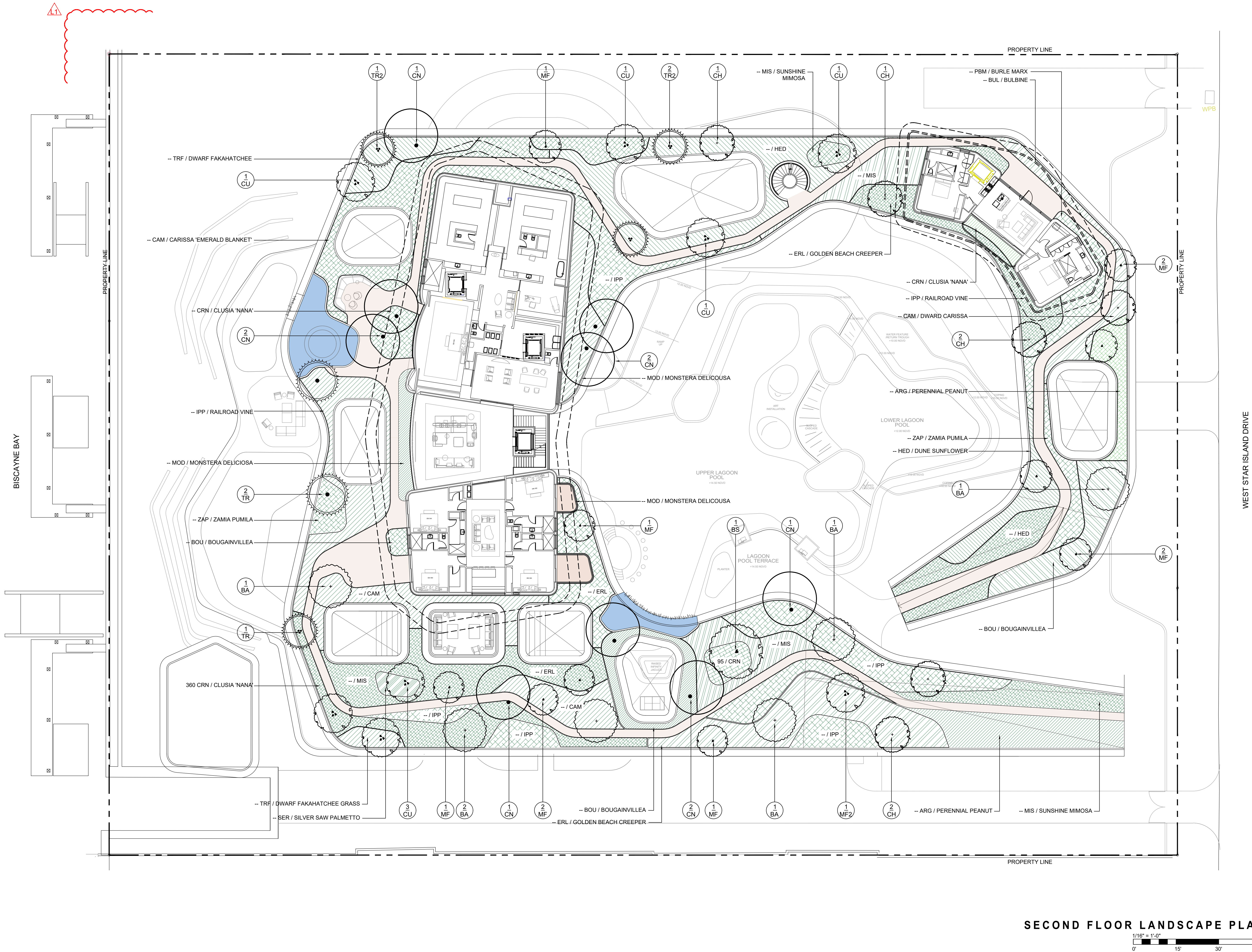
CHRISTOPHER CAWLEY, RLA
Florida License LA 6666786

DATE:

AUGUST 08, 2022

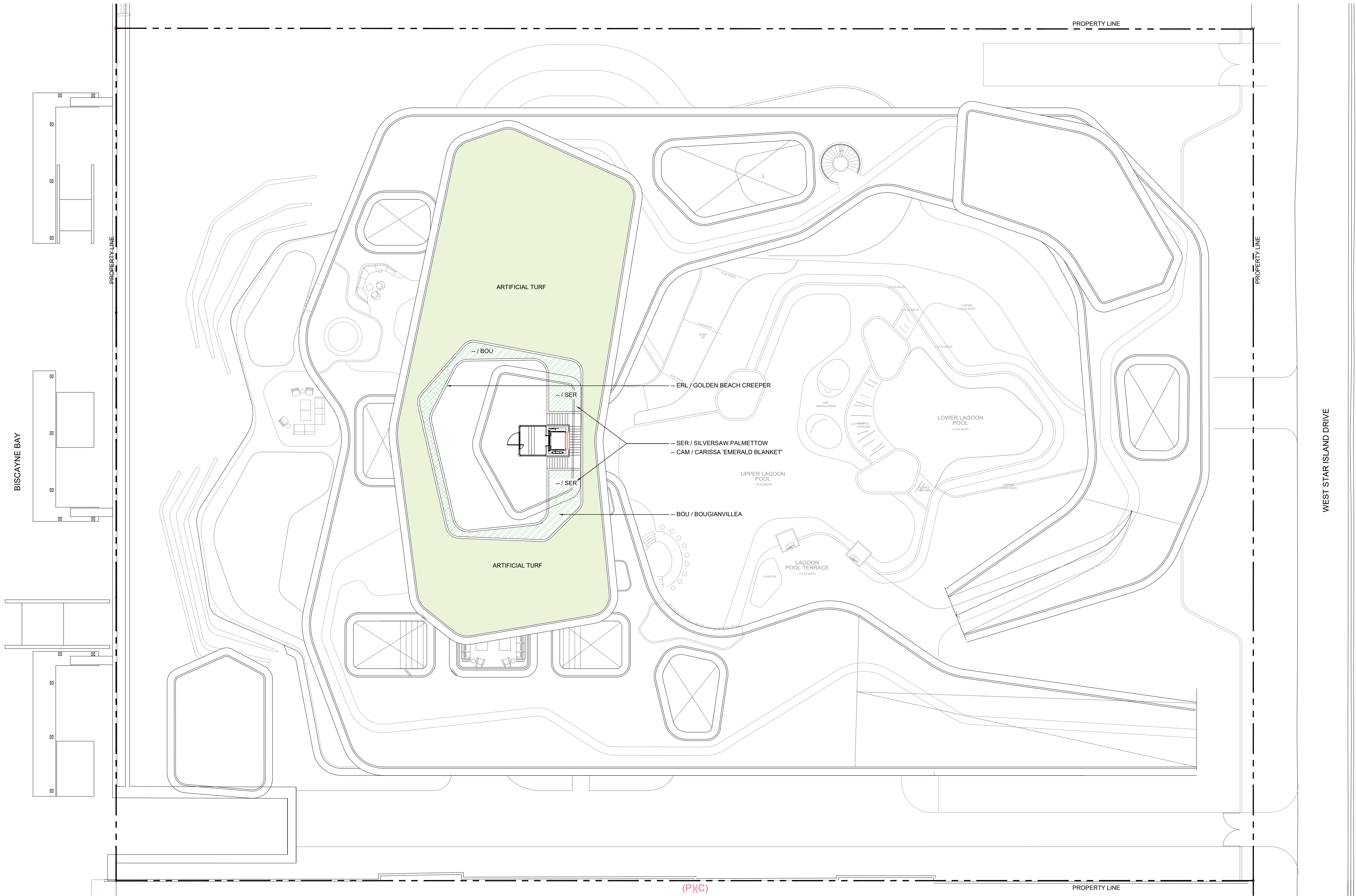
SHEET NO:

L-2.3



SECOND FLOOR LANDSCAPE PLAN

1/16\"/>



NEW RESIDENCE
4.5 + 4 STAR ISLAND DRIVE
MIAMI BEACH, FL 33139

ROOF TERRACE LANDSCAPE PLAN



PLANT LIST - 4, 5 + 6 STAR ISLAND

KEY	NATIVE	QTY.	COMMON NAME	BOTANICAL NAME	HEIGHT, SPECIFICATION, & NOTES
TREES					
BA	YES	6	VERAWOOD TREE	Bulnesia arborea	18' ht min, 10' spread min, 6" dbh, standard trunk
BS	YES	1	GUMBO LIMBO TREE	Bursera simaruba	Specimen, 20' ht min, 10' spread min, 6" dbh, standard trunk
CH	NO	8	POWDERPUFF TREE	Caillandra haematocephala	100 gallon, 14' ht, 7" spread, 4" dbh, standard form
CG	NO	7	BRIDALVEIL TREE	Caesalpinia granadillo	100 gallon, 14' ht, 7" spread, 4" dbh, standard form
CR	YES	5	PITCH APPLE TREE	Clusia rosea	100 gallon, 14' ht, 7" spread, 4" dbh, standard form
CS	YES	7	SILVER BUTTONWOOD TREE	Conocarpus erectus 'Sericeus'	100 gallon, 14' ht, 7" spread, 4" dbh, standard form
CS2	YES	6	SILVER BUTTONWOOD TREE	Conocarpus erectus 'Sericeus'	65 gallon, 10' ht - 12' ht, 6' spread, 2" dbh, standard form
CU	YES	8	SEA GRAPE TREE	Coccoloba uvifera	200 gallon, 12' height, 6' spread, multi trunk, limbed up for sculptural trunk
EF	YES	33	SPANISH STOPPER TREE	Eugenia foetida	100 gallon, 12' height, 6' spread, 3" dbh, standard, equal to Treeworld Wholesale
MF	YES	11	SIMPSON STOPPER TREE	Myrcianthes fragrens	100 gallon, 12' height, 6' spread, 3" dbh, standard, equal to Treeworld Wholesale
PR	NO	AS REQ	BAY RUM TREE	Pimenta racemosa	100 gallon, 12' height, 6' spread, 3" dbh, standard, equal to Treeworld Wholesale
PALMS					
BT	NO	AS REQ	SLENDER WEAVERS BAMBOO	Bambusa textilis gracilis	18'-20' height, multi, full
CN	NO	11	'MAYPAN' COCONUT PALM	Cocos nucifera 'Maypan'	Full heads, Florida Fancy, see landscape plans for grey wood
CM	NO	AS REQ	FISH TAIL PALM	Caryota mitis	45 gallon, 12-14' height, full to base, dark green frauds
DC	NO	AS REQ	CABADA PALM	Dypsis cabadae	65 gallon, 12-14' height, partial shade grown w/ dark green trunks + fronds, full to base
PE	NO	AS REQ	ALEXANDER PALM	Ptychosperma elegans	Fg, 20'-22' o.a ht min, double and triple trunks
PR	NO	AS REQ	PYGYM DATE PALM	Pheonix roebellini	45 gallon, 7' - 8' ht min, 3'-4' clear trunk, full heads, triples
PU	NO	AS REQ	SCREW PINE	Pandanus utilis	Fg specimen, 18' ht min, 15' spread, multi character trunks
RHE	NO	AS REQ	LADY PALM	Rhapsis excelsa	45 gallon, 5' height, 5' spread, full to base, shade grown
RM	NO	AS REQ	TRAVELERS PALM	Ravenala madagascarensis	25 gallon, 14' height, full, perfect v shape, no trunk
SP	YES	AS REQ	CABBAGE PALM	Sabal palmetto	Fg, 14' overall height, full head leaning character
TR	YES	2	THATCH PALM	Thrinax radiata	Fg, 10' o.a ht, 8' clear trunk, full heads, standards, call John from Jim's Bougainvillea 305-345-4152
TR2	YES	4	THATCH PALM	Thrinax radiata	45 gallon, 7' to 8' o.a ht, 3' clear trunk, full heads multi
SHRUBS					
CLG	NO	-	SMALL LEAF CLUSIA	Clusia guttifera	25 gallon , 6' height, full, space 36" on center
CRN	NO	455	CLUSIA ROSEA 'NANA'	Same	7 gallon, full, 24" on center
EUF	YES	630	SPANISH STOPPER SHRUB	Eugenia foetida	25 gallon, 48" height, 24" spread, full to base, space 24" on center
GYL	YES	340	CRABWOOD SHRUB	Gymnanthes lucida	25 gallon, 10' height, 3' spread, 30" on center
PSL	YES	320	DWARF BAHAMA COFFEE SHRUB	Psychotria ligustrifolia	7 gallon, 3' height, 24" on center
TROPICALS, GROUNDCOVERS, + ACCENTS					
ALO	NO	AS REQ	BROMELIAD 'ODORATA'	Alcantarea 'Odorata'	7 gallon, full, 24" on center
ALP	NO	AS REQ	RED GINGER	Alpinia purpurata	25 gallon, 4' spread
ALS	NO	AS REQ	ELEPHANT EAR	Alocasia spp.	3 gallon, 24" on center
CAM	NO	320	CARISSA 'EMERALD BLANKET'	Carissa macro 'Emerald Blanket'	3 gallon, 28" on center
CRQ	NO	AS REQ	CRINUM LILY	Crinum augustum	15 gallon, 3' height, 3' spread
DIS	NO	AS REQ	MEXICAN CYCAD	Dioon edule	25 gallon, 5' height, 5' spread
HEL	YES	AS REQ	HELICONIA	Heliconia caribaea	25 gallon, 5' height, 5' spread
LIR	NO	AS REQ	LILYTURF	Liriope muscari	3 gallon, full, 18" on center
MIC	NO	AS REQ	WART FERN	Microsorium scolopendrium	3 gallon, full, 18" on center
MOD	NO	AS REQ	SWISS CHEESE PLANT	Monstera deliciosa	7 gallon, full, 24" on center
NKQ	NO	AS REQ	KIMBERLY QUEEN FERN	Nephrolepis 'Kimberly Queen'	3 gallon, full, 18" on center
PBM	NO	AS REQ	PHILODENDRON 'BURLE MARX'	Same	3 gallon, full, 18" on center
PEO	NO	AS REQ	BABY RUBBER PLANT	Peperomia obtusifolia	3 gallon, full, 18" on center
PGC	NO	AS REQ	PHILODENDRON 'GREEN CONGO'	Same	7 gallon, full, 24" on center
PHG	NO	AS REQ	PHILODENDRON GIGANTEUM	Same	7 gallon, full, 24" on center
PHX	NO	AS REQ	PHILODENDRON 'XANADU'	Same	3 gallon, full, 18" on center
PRC	NO	AS REQ	PHILODENDRON 'ROJO CONGO'	Same	3 gallon, full, 24" on center
PSW	NO	AS REQ	WHITE FOUNTAIN GRASS	Pennisetum setaceum	3 gallon, full, 18" on center
ZAP	YES	AS REQ	COONTIE	Zamia pumila	7 gallon, 3' height, full, 24" on center
SOD, AGGREGATE & MULCH					
TURF	+/- 7,726 SF		ARTIFICIAL TURF		
SOD	+/- 15,438 SF		'EMPIRE TURF' ZOYSIA GRASS - OVER 2" TOPSOIL BED, SEE PLANTING SPECS		
MLC			DARK BROWN 'FLORI MULCH' SHREDDED ORGANIC MULCH (NO CYPRESS), TO BE DETERMINED		

LANDSCAPE LEGEND

MIAMI BEACH LANDSCAPE ORDINANCE CHAPTER 126 (RS1 - RS4 Single Family Home Residential)

ZONING:	RS1	LOT SIZE:	121,500 SF	ACRES:	2.78
MINIMUM STANDARDS		REQUIRED		PROVIDED	
TREES					
FRONT YARD - 2 TREES PER LOT BACK YARD - 3 TREES PER LOT TOTAL OF 5 TREES REQUIRED FOR LOTS UP TO 6,000 SF. 1 ADDITIONAL TREE IS REQUIRED FOR EACH ADDITIONAL 1,000 SF OF LOT AREA. MIN 30% OF REQUIRED TREES SHALL BE NATIVE SPECIES MIN 50% OF REQUIRED TREES SHALL BE LOW MAINTENANCE AND DROUGHT TOLERANT SPECIES DIVERSITY OF 31 OR MORE TOTAL TREES REQUIRED : 7 TREE SPECIES		FRONT YARD - 2 TREES PER LOT BACK YARD - 3 TREES PER LOT TOTAL LOT AREA: 121,500 SF - 6,000 SF 5 TREES REQ + (115,500 SF / 1,000) = 121 TREES REQ 30% x 121 = 37 TREES OF NATIVE SPECIES 50% x 121 = 61 TREES OF LOW MAINTENANCE AND DROUGHT TOLERANT SPECIES 7 TREE SPECIES		FRONT YARD - 2 TREES PROVIDED BACK YARD - 3 TREES PROVIDED 115 TOTAL TREES PROVIDED 62 TOTAL NATIVE TREES PROVIDED 62 TOTAL LOW MAINTENANCE TREES PROVIDED 10 TREE SPECIES PROVIDED	
STREET TREES					
AVERAGE STREET TREE SPACING 20' ON CENTER		300 LINEAR FEET / 20 = 15 STREET TREES REQ		15 STREET TREES PROVIDED	
SHRUBS					
12 SHRUBS PER THE NUMBER OF REQUIRED LOT AND STREET TREES MIN 50% OF REQUIRED SHRUBS SHALL BE NATIVE SPECIES MIN 10% OF REQUIRED SHRUBS SHALL BE LARGE SHRUBS or SMALL TREES MIN 50% OF REQUIRED LARGE SHRUBS SHALL BE NATIVE SPECIES		12 x (TOTAL LOT + STREET TREES) = 1,632 TOTAL SHRUBS REQUIRED 50% x 1,632 = 816 SHRUBS OF NATIVE SPECIES REQ 10% x 1,632 = 164 TOTAL LARGE SHRUBS REQ 50% x 164 = 82 LARGE SHRUBS OF NATIVE SPECIES REQ		1,995 TOTAL SHRUBS PROVIDED 1,290 TOTAL NATIVE SHRUBS PROVIDED 970 TOTAL LARGE SHRUBS PROVIDED 970 TOTAL NATIVE LARGE SHRUBS	
LAWN					
LAWN SHALL BE MAXIMUM OF 50 % OF REQUIRED LANDSCAPE AREA		LAWN AREAS ARE LESS THAN 50% OF LANDSCAPE AREA			
IRRIGATION SYSTEM					
LANDSCAPE SHALL BE WATERED BY A PERMANENT IRRIGATION SYSTEM				100% IRRIGATION COVERAGE PROVIDED	

C.M.B. RELOCATED EXISTING TREE INVENTORY 4, 5 + 6 STAR ISLAND DRIVE

NUMBER	SYMBOL	COMMON NAME	BOTANICAL NAME	COMMENTS
#408	PC	CANARY ISLAND DATE PALM	Phoenix canariensis	RELOCATED ON-SITE FROM LOT 4. SEE SHEET L1.1 FOR SPECIFICATIONS
#409	PC	CANARY ISLAND DATE PALM	Phoenix canariensis	RELOCATED ON-SITE FROM LOT 4. SEE SHEET L1.1 FOR SPECIFICATIONS
#410	PC	CANARY ISLAND DATE PALM	Phoenix canariensis	RELOCATED ON-SITE FROM LOT 4. SEE SHEET L1.1 FOR SPECIFICATIONS
#411	PC	CANARY ISLAND DATE PALM	Phoenix canariensis	RELOCATED ON-SITE FROM LOT 4. SEE SHEET L1.1 FOR SPECIFICATIONS
#412	PC	CANARY ISLAND DATE PALM	Phoenix canariensis	RELOCATED ON-SITE FROM LOT 4. SEE SHEET L1.1 FOR SPECIFICATIONS
#436	PC	CANARY ISLAND DATE PALM	Phoenix canariensis	RELOCATED ON-SITE FROM LOT 4. SEE SHEET L1.1 FOR SPECIFICATIONS
#437	PC	CANARY ISLAND DATE PALM	Phoenix canariensis	RELOCATED ON-SITE FROM LOT 4. SEE SHEET L1.1 FOR SPECIFICATIONS
#524	PC	CANARY ISLAND DATE PALM	Phoenix canariensis	RELOCATED ON-SITE FROM LOT 5. SEE SHEET L1.1 FOR SPECIFICATIONS
#527	PC	CANARY ISLAND DATE PALM	Phoenix canariensis	RELOCATED ON-SITE FROM LOT 5. SEE SHEET L1.1 FOR SPECIFICATIONS
#528	PC	CANARY ISLAND DATE PALM	Phoenix canariensis	RELOCATED ON-SITE FROM LOT 5. SEE SHEET L1.1 FOR SPECIFICATIONS
#529	PC	CANARY ISLAND DATE PALM	Phoenix canariensis	RELOCATED ON-SITE FROM LOT 5. SEE SHEET L1.1 FOR SPECIFICATIONS
#530	FB	BANYAN TREE	Ficus benghalensis	RELOCATED ON-SITE FROM LOT 5. SEE SHEET L1.1 FOR SPECIFICATIONS
#531	PRU	CLIFF DATE PALM	Phoenix rupicola	RELOCATED ON-SITE FROM LOT 5. SEE SHEET L1.1 FOR SPECIFICATIONS
#533	PS	PHEONIX SPP CLUMP	Pheonix spp.	RELOCATED ON-SITE FROM LOT 5. SEE SHEET L1.1 FOR SPECIFICATIONS
#534	PS	PHEONIX SPP CLUMP	Pheonix spp.	RELOCATED ON-SITE FROM LOT 5. SEE SHEET L1.1 FOR SPECIFICATIONS
#536	RR	ROYAL PALM	Roystonea elata	RELOCATED ON-SITE FROM LOT 5. SEE SHEET L1.1 FOR SPECIFICATIONS
#537	RR	ROYAL PALM	Roystonea elata	RELOCATED ON-SITE FROM LOT 5. SEE SHEET L1.1 FOR SPECIFICATIONS
#538	RR	ROYAL PALM	Roystonea elata	RELOCATED ON-SITE FROM LOT 5. SEE SHEET L1.1 FOR SPECIFICATIONS
#539	PRE	SENEGAL DATE PALM	Pheonix reclinata	RELOCATED ON-SITE FROM LOT 5. SEE SHEET L1.1 FOR SPECIFICATIONS
#540	PRE	SENEGAL DATE PALM	Pheonix reclinata	RELOCATED ON-SITE FROM LOT 5. SEE SHEET L1.1 FOR SPECIFICATIONS
#541	PRE	SENEGAL DATE PALM	Pheonix reclinata	RELOCATED ON-SITE FROM LOT 5. SEE SHEET L1.1 FOR SPECIFICATIONS
#542	PD	MEDJOOL DATE PALM	Pheonix dactylifera	RELOCATED ON-SITE FROM LOT 5. SEE SHEET L1.1 FOR SPECIFICATIONS
#543	PD	MEDJOOL DATE PALM	Pheonix dactylifera	RELOCATED ON-SITE FROM LOT 5. SEE SHEET L1.1 FOR SPECIFICATIONS
#544	PD	MEDJOOL DATE PALM	Pheonix dactylifera	RELOCATED ON-SITE FROM LOT 5. SEE SHEET L1.1 FOR SPECIFICATIONS
#545	PD	MEDJOOL DATE PALM	Pheonix dactylifera	RELOCATED ON-SITE FROM LOT 5. SEE SHEET L1.1 FOR SPECIFICATIONS
#546	PD	MEDJOOL DATE PALM	Pheonix dactylifera	RELOCATED ON-SITE FROM LOT 5. SEE SHEET L1.1 FOR SPECIFICATIONS
#547	PD	MEDJOOL DATE PALM	Pheonix dactylifera	RELOCATED ON-SITE FROM LOT 5. SEE SHEET L1.1 FOR SPECIFICATIONS
#548	PD	MEDJOOL DATE PALM	Pheonix dactylifera	RELOCATED ON-SITE FROM LOT 5. SEE SHEET L1.1 FOR SPECIFICATIONS
#549	PD	MEDJOOL DATE PALM	Pheonix dactylifera	RELOCATED ON-SITE FROM LOT 5. SEE SHEET L1.1 FOR SPECIFICATIONS
#603	AL	BLACK CALABASH TREE	Amphitecna latifolia	RELOCATED ON-SITE FROM LOT 6. SEE SHEET L1.1 FOR SPECIFICATIONS
#604	SL	SATAKENTIA PALM	Satakentia lukuensis	RELOCATED ON-SITE FROM LOT 6. SEE SHEET L1.1 FOR SPECIFICATIONS
#605	HE	SAGISI PALM (DOUBLE)	Heterospathe elata	RELOCATED ON-SITE FROM LOT 6. SEE SHEET L1.1 FOR SPECIFICATIONS
#611	RR	ROYAL PALM	Roystonea elata	RELOCATED ON-SITE FROM LOT 6. SEE SHEET L1.1 FOR SPECIFICATIONS
#615	SL	SATAKENTIA PALM	Satakentia lukuensis	RELOCATED ON-SITE FROM LOT 6. SEE SHEET L1.1 FOR SPECIFICATIONS
#616	MF	SIMPSON STOPPER TREE	Myrcianthes fragrans	RELOCATED ON-SITE FROM LOT 6. SEE SHEET L1.1 FOR SPECIFICATIONS
#617	RR	ROYAL PALM	Roystonea elata	RELOCATED ON-SITE FROM LOT 6. SEE SHEET L1.1 FOR SPECIFICATIONS
#618	SL	SATAKENTIA PALM	Satakentia lukuensis	RELOCATED ON-SITE FROM LOT 6. SEE SHEET L1.1 FOR SPECIFICATIONS
#619	SL	SATAKENTIA PALM	Satakentia lukuensis	RELOCATED ON-SITE FROM LOT 6. SEE SHEET L1.1 FOR SPECIFICATIONS
#620	HE	SAGISI PALM (TRIPLE)	Heterospathe elata	RELOCATED ON-SITE FROM LOT 6. SEE SHEET L1.1 FOR SPECIFICATIONS
#621	RM	TRAVELERS PALM	Ravenala madagascariensis	RELOCATED ON-SITE FROM LOT 6. SEE SHEET L1.1 FOR SPECIFICATIONS
#622	RM	TRAVELERS PALM	Ravenala madagascariensis	RELOCATED ON-SITE FROM LOT 6. SEE SHEET L1.1 FOR SPECIFICATIONS
#623	RM	TRAVELERS PALM	Ravenala madagascariensis	RELOCATED ON-SITE FROM LOT 6. SEE SHEET L1.1 FOR SPECIFICATIONS
#624	RM	TRAVELERS PALM	Ravenala madagascariensis	RELOCATED ON-SITE FROM LOT 6. SEE SHEET L1.1 FOR SPECIFICATIONS
#625	RM	TRAVELERS PALM	Ravenala madagascariensis	RELOCATED ON-SITE FROM LOT 6. SEE SHEET L1.1 FOR SPECIFICATIONS
#626	SL	SATAKENTIA PALM	Satakentia lukuensis	RELOCATED ON-SITE FROM LOT 6. SEE SHEET L1.1 FOR SPECIFICATIONS
#627	SL	SATAKENTIA PALM	Satakentia lukuensis	RELOCATED ON-SITE FROM LOT 6. SEE SHEET L1.1 FOR SPECIFICATIONS
#631	BA	VERAWOOD TREE	Bulnesia arborea	RELOCATED ON-SITE FROM LOT 6. SEE SHEET L1.1 FOR SPECIFICATIONS
#647	CL	ARECA PALM	Chrysalidocarpus lutescens	RELOCATED ON-SITE FROM LOT 6. SEE SHEET L1.1 FOR SPECIFICATIONS
#61043	PS	PHEONIX SPP CLUMP	Pheonix spp.	RELOCATED ON-SITE FROM LOT 4. SEE SHEET L1.1 FOR SPECIFICATIONS
#61048	AD	BAOBAB TREE	Adansonia digitata	RELOCATED ON-SITE FROM LOT 4. SEE SHEET L1.1 FOR SPECIFICATIONS
#61049	LL	BLUE LATAN PALM	Latania loddigesii	RELOCATED ON-SITE FROM LOT 4. SEE SHEET L1.1 FOR SPECIFICATIONS
#61011	QV	LIVE OAK	Quercus virginiana	RELOCATED ON-SITE FROM LOT 4. SEE SHEET L1.1 FOR SPECIFICATIONS
#61017	QV	LIVE OAK	Quercus virginiana	RELOCATED ON-SITE FROM LOT 4. SEE SHEET L1.1 FOR SPECIFICATIONS
#61018	CU	SEAGRAPE	Coccoloba uvifera	RELOCATED ON-SITE FROM LOT 4. SEE SHEET L1.1 FOR SPECIFICATIONS
#61016	LC	CHINESE FAN PALM	Livistona chinensis	RELOCATED ON-SITE FROM LOT 4. SEE SHEET L1.1 FOR SPECIFICATIONS
#61033	PS	PHEONIX SPP CLUMP	Pheonix spp.	RELOCATED ON-SITE FROM LOT 4. SEE SHEET L1.1 FOR SPECIFICATIONS
#61037	PS	PHEONIX SPP	Pheonix spp.	RELOCATED ON-SITE FROM LOT 4. SEE SHEET L1.1 FOR SPECIFICATIONS
#61038	PS	PHEONIX SPP	Pheonix spp.	RELOCATED ON-SITE FROM LOT 4. SEE SHEET L1.1 FOR SPECIFICATIONS
#61039	PS	PHEONIX SPP	Pheonix spp.	RELOCATED ON-SITE FROM LOT 4. SEE SHEET L1.1 FOR SPECIFICATIONS
#61000	KA	SAUSAGE TREE	Kigelia africana	RELOCATED ON-SITE FROM LOT 4. SEE SHEET L1.1 FOR SPECIFICATIONS
#61004	QV	LIVE OAK	Quercus virginiana	RELOCATED ON-SITE FROM LOT 4. SEE SHEET L1.1 FOR SPECIFICATIONS
#61040	PP	PONGAM	Pongamia pinnata	RELOCATED ON-SITE FROM LOT 4. SEE SHEET L1.1 FOR SPECIFICATIONS
#61044	SM	MAHOGANY TREE	Swietenia mahagoni	RELOCATED ON-SITE FROM LOT 4. SEE SHEET L1.1 FOR SPECIFICATIONS
#61045	QV	LIVE OAK	Quercus virginiana	RELOCATED ON-SITE FROM LOT 4. SEE SHEET L1.1 FOR SPECIFICATIONS
#61046	QV	LIVE OAK	Quercus virginiana	RELOCATED ON-SITE FROM LOT 4. SEE SHEET L1.1 FOR SPECIFICATIONS
#61019	PS	PHEONIX SPP CLUMP	Pheonix spp.	RELOCATED ON-SITE FROM LOT 5. SEE SHEET L1.1 FOR SPECIFICATIONS

CHRISTOPHER
CAWLEY
LANDSCAPE
ARCHITECTURE

780 NE 69TH STREET
SUITE 200 MIAMI, FL 33138
O 786.536.2961 C 305.979.1585
CHRISTOPHERCAWLEY.COM
Florida Landscape Architecture
Business LLC 26000460

REVISION SCHEDULE:

08.01.22 BD COMMENTS

PROJECT INFO:

NEW RESIDENCE
4, 5 + 6 STAR ISLAND DRIVE
MIAMI BEACH, FL 33139

CHRISTOPHER CAWLEY, RLA
Florida License LA 6666786

DATE:

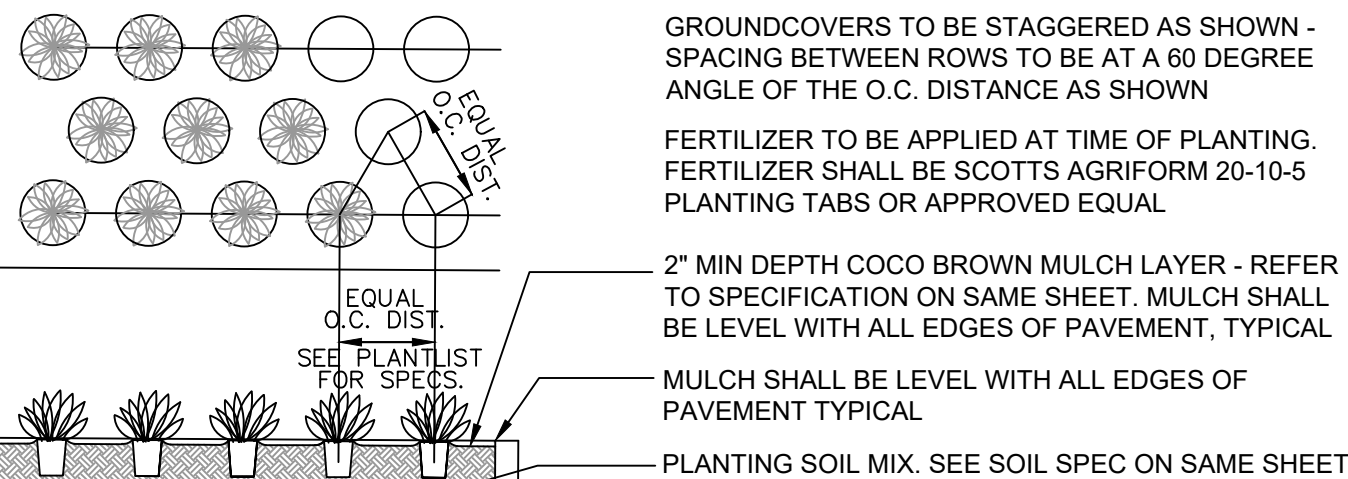
AUGUST 08, 2022

SHEET NO:

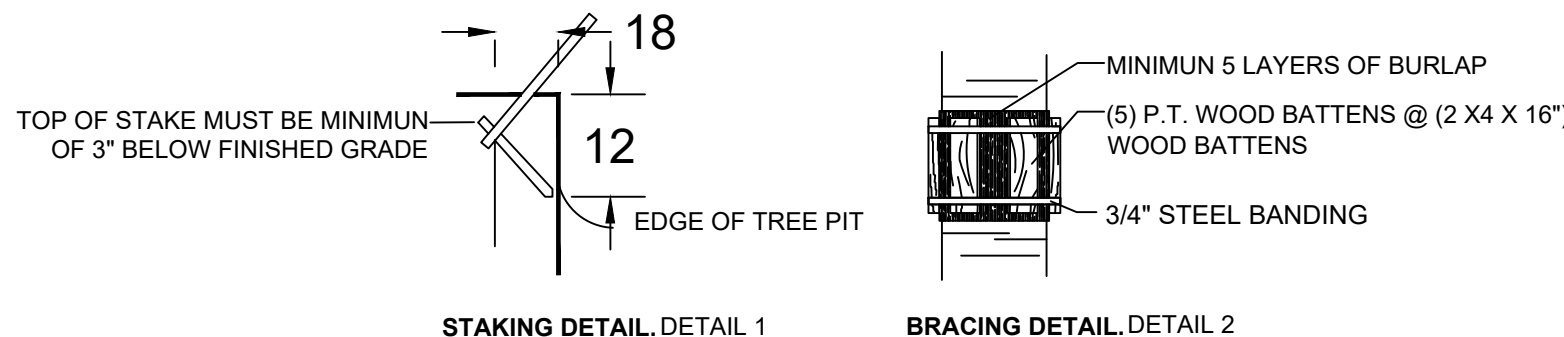
PLANT LISTS + LANDSCAPE LEGEND

L-3.0

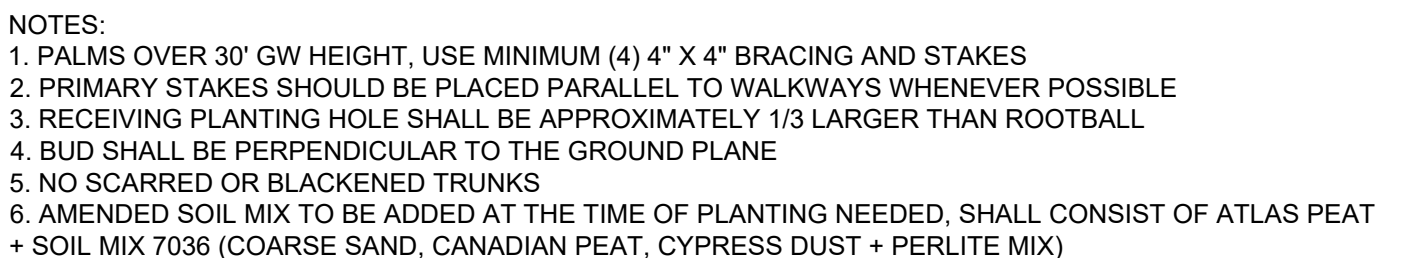
N.T.S.



N.T.S.



N.T.S.



N.T.S.

ALL PLANT MATERIAL SHALL BE FLORIDA GRADE NO. 1 OR BETTER.

2. CONTRACTOR SHALL BECOME FAMILIAR WITH THE LOCATION OF, AVOID, AND PROTECT ALL UTILITY LINES, BURIED CABLES, AND OTHER UTILITIES.

3. TREE, PALM, ACCENT AND BED LINES ARE TO BE LOCATED IN THE FIELD AND APPROVED BY THE LANDSCAPE ARCHITECT PRIOR TO INSTALLATION.

4. ALL PLANTING SOIL SHALL BE 90/10 TOPSOIL:SAND MIX, FREE OF FILL, STONES, ROCKS, OR OTHER FOREIGN MATTER. THIS SPECIFICATION INCLUDES ALL BACKFILL FOR BERMS AND OTHER LANDSCAPE AREAS.

CARE SHALL BE TAKEN TO AVOID PLACEMENT OF CONSTRUCTION FILL, GRAVEL, AND/OR DEBRIS OVER THE ROOTBALLS OF INSTALLED OR EXISTING TREES AND OR PALMS ON SITE.

GROUND COVER PLANTING BEDS:
6" DEPTH PLANTING SOIL SPREAD IN PLACE-THROUGHOUT.

SHRUB AND HEDGE PLANTING AREAS:
12" DEPTH PLANTING SOIL SPREAD IN PLACE-THROUGHOUT.

TREES, PALMS, SPECIMEN PLANT MATERIAL LOCATIONS:
REMOVE ALL LIMEROCK PRESENT TO A DEPTH OF AT LEAST 30" BEFORE PLACING NEW PLANTING SOIL. APPLY NEW CLEAN PLANTING SOIL IN PLANTING AREA AS REQUIRED

5. THE SITE CONTRACTOR SHALL BE RESPONSIBLE TO BRING ALL GRADES TO WITHIN 2" OF FINAL GRADES. THIS SHALL INCLUDE A 2" APPLICATION OF 90/10 TOPSOIL:SAND MIX FOR ALL LANDSCAPE AND AREAS TO BE SOODED.

6. THE LANDSCAPE CONTRACTOR SHALL CALCULATE AND SUBMIT AN ITEMIZED PRICE FOR THE 2" APPLICATION OF 90/10 MIX FOR ALL 800 AREAS AS A REFERENCE IN THE CASE THAT THERE WOULD BE A DISCREPANCY BETWEEN THIS SITE AND LANDSCAPE CONTRACTORS AND NOTIFY THE SITE CONTRACTOR OR PROJECT SUPERINTENDENT AS TO THIS DISCREPANCY. IT WILL THEN BE DETERMINED WHICH PARTY WILL PROVIDE THIS 2" TOPSOIL:SAND APPLICATION AND SUBSEQUENT PAYMENT OTHER PLANTING SOIL MIXES TO BE ADDED, I.E. FOR TREES, PALMS, SPECIMEN PLANTS, SHRUBS AND GROUNDCOVERS SHALL BE THE RESPONSIBILITY OF THE LANDSCAPE CONTRACTOR AND BE INCLUSIVE WITH THE LANDSCAPE BID.

7. ALL EXISTING TREE + PALM INFORMATION THAT HAS BEEN PROVIDED ON THIS PLAN FOLLOWS THE CITY OF MIAMI BEACH TREE PERMITTING GUIDELINES. ANY TREES OR PALMS CONSIDERED INVASIVE OR THAT FALLS UNDER THE TREE PERMIT EXEMPTION / PROHIBITED SPECIES LIST 24-94 (4) MAY NOT BE SHOWN FOR CLARITY PURPOSES. ANY DISCREPANCIES IF NOTED UPON DIRECTED FIELD INSPECTION SHALL BE BROUGHT TO THE IMMEDIATE ATTENTION OF THE LANDSCAPE ARCHITECT.

8. IRRIGATION SHALL PROVIDE FOR A 100% COVERAGE WITH 50% OVERLAP MINIMUM AND BE PROVIDED BY A FULLY AUTOMATIC IRRIGATION SYSTEM W/ RAIN MONITOR SENSOR ATTACHED TO CONTROLLER. ALL FLORIDA BUILDING CODE APPENDIX "F" IRRIGATION REQUIREMENTS SHALL BE STRICTLY ADHERED TO FOR INSTALLATION AND PREVAILING WATER MANAGEMENT DISTRICT RESTRICTIONS AND REGULATIONS SHALL BE IN COMPLIANCE FOR POST-INSTALLATION WATERING SCHEDULES. CONTRACTOR SHALL COORDINATE WITH THE IRRIGATION CONTRACTOR AND LEAVE PROVISIONS FOR ALL SLEEPING AND PIPE ROUTING. ALL UNDERGROUND UTILITIES TO BE LOCATED BY DIALING 811 AS REQUIRED BY LAW.

9. ALL PLANTING BEDS SHALL BE MULCHED TO A DEPTH OF 2" w/ APPROVED NATURAL SHREDDED COCO BROWN MULCH FREE FROM WEEDS AND PESTS. NO "GUMMIES", "CYPRESS MULCH" OR "RED DYED MULCH" TO BE ACCEPTED. KEEP MULCH 6" AWAY FROM TREE OR PALM TRUNKS AS PER INDUSTRY RECOMMENDATIONS.

10. ALL TREES, PALMS, SHRUBS AND GROUNDCOVERS, AND SOD / LAWN SHALL CARRY A ONE-YEAR WARRANTY FROM THE DATE OF FINAL ACCEPTANCE.

11. NURSERY SUPPORT POLES SHALL BE REMOVED AT THE NURSERY, PRIOR TO DELIVERY, AND TREES DELIVERED WITH NURSERY POLES WILL NOT BE ACCEPTED; AND THEREFORE REJECTED, w/ THE EXCEPTION TREE SPECIES: CLUSIA ROSEA + SILVER BUTTERNUT WOOD TREES

12. ALL TREES AND PALMS SHALL BE STAKED PER ACCEPTED STANDARDS BY THE FLORIDA NURSERYMEN & GROWERS LANDSCAPE ASSOCIATION (FNGLA) AND ANSI A-300 (PART 6)-2012 TREE, SHRUB, AND OTHER WOODY PLANT MANAGEMENT STAKING AND BRACING (TRANSPLANTING). CONTRACTOR SHALL ENSURE THAT THE PLANS, DETAILS, SPECIFICATIONS AND NOTES HAVE BEEN ADHERED TO AND THAT THE LANDSCAPE AND IRRIGATION INSTALLATION IS COMPLIANT TO ALL ITEMS AS DIRECTED ON THE PLANS PRIOR TO SCHEDULING OF THE FINAL INSPECTION.

CONTRACTOR SHALL REMOVE ALL BRACING MATERIALS FROM ALL PALMS, TREES WITHIN 1 YEAR OF INSTALLATION.

13. THE PLANT LIST IS INTENDED ONLY AS AN AID TO BIDDING. ANY DISCREPANCIES FOUND BETWEEN THE QUANTITIES ON THE PLAN AND PLANT LIST, THE QUANTITIES ON THE PLAN SHALL BE HELD VALID.

14. IF NECESSARY, CONTRACTOR SHALL PROVIDE A WATER TRUCK DURING PLANTING TO ENSURE PROPER WATERING-IN DURING INSTALLATION AND CONTRACTOR WILL BE RESPONSIBLE FOR CONTINUAL WATERING UNTIL FINAL ACCEPTANCE BY THE OWNER.

A MINIMUM OF 6 MONTHS OF SUPPLEMENTAL HAND OR AUTOMATIC IRRIGATION SYSTEM WATERING SHALL BE REQUIRED TO AID IN NEW TREE OR PALM ESTABLISHMENT.

15. FERTILIZATION: ONE COMPLETE APPLICATION OF GRANULAR FERTILIZER SHALL BE APPLIED PRIOR TO FINAL ACCEPTANCE AND APPROVAL BY THE LANDSCAPE ARCHITECT. FERTILIZER SHALL BE SCOTTS AGRIFORM 20-10-15 PLANTING TABS OR APPROVED EQUAL AS RECOMMENDED BY LANDSCAPE CONTRACTOR

16. SHOULD ANY TREES OR PALMS BE DAMAGED THEY SHALL BE EVALUATED BY THE CITY URBAN FORESTER TO DETERMINE CORRECTIVE ACTIONS THAT MAY INCLUDE REMOVAL, CORRECTIVE PRUNING AND OR REPLACEMENT. ANY CORRECTIVE ACTION REQUIRED SHALL BE PERFORMED IN ACCORDANCE WITH A CITY OF MIAMI BEACH CODE, ANSIA-300 PRUNING STANDARDS AND OR AN ISSUED ERM TREE PERMIT OR ENVIRONMENTAL PERMIT. ANY CORRECTIVE PRUNING REQUIRED SHALL BE PERFORMED BY AN ISA CERTIFIED ARBORIST OR ASCA CONSULTING ARBORIST AND THE CITY URBAN FORESTER SHALL BE CONSULTED.

17. ALL TREES + PALMS TO REMAIN OR BE RELOCATED ON SITE IN THE VICINITY OF CONSTRUCTION ACTIVITIES, SHALL BE PROTECTED THROUGH THE USE OF TREE PROTECTION BARRICADES INSTALLED AT THE TREE OR PALM DRIP LINE. A TREE OR PALM TO BE RELOCATED SHALL BE PROTECTED THROUGH THE USE OF TREE PROTECTION BARRICADES AND SHALL REMAIN IN PLACE UNTIL ON SITE CONSTRUCTION HAS BEEN COMPLETED.

18. MULCH SHALL NOT BE APPLIED WITHIN 6" OF ANY TREE OR PALM TRUNK THAT IS INSTALLED OR INCORPORATED INTO THE PROJECT. FOR ROW TREES + PALMS, ALL MULCH SHALL BE AMERIGROW "PREMIUM PINEBARK BROWN" SHREDDED MULCH OR A CITY APPROVED ALTERNATIVE.