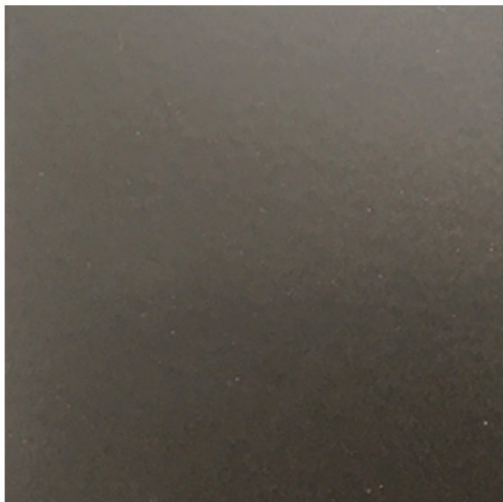


# MATERIAL PALETTE



**PS1**  
LIME PLASTER STUCCO FINISH



**MT1**  
METAL MULLIONS, DOORS, COLUMN  
COVERS - KYNAR FINISH



**ST1**  
STONE CLADDING-  
HONED AND FILLED



**ST2**  
STONE CLADDING-  
ROUGH FACE



UNDERSTORY SAND SET PAVERS-  
CORALSTONE SELECT WHITE



**GL1**  
IMPACT GLAZING-  
CLEAR



**GL2**  
IMPACT GLASS HANDRAIL-  
CLEAR, RADIUSED CORNERS



**WD1**  
EXTERIOR ALUMINUM CLADDING-  
POWDERCOATED PTF FINISH

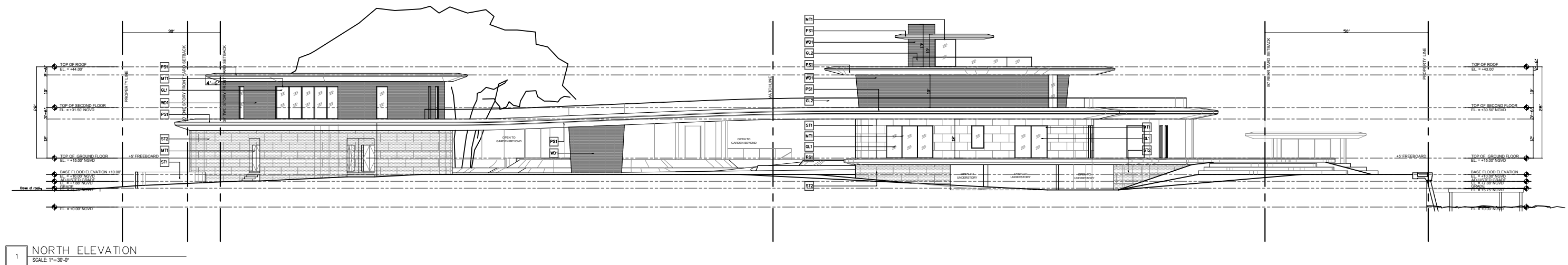


**WD2**  
EXTERIOR ALUMINUM SCREEN-  
POWDERCOATED PTF FINISH, 50% OPEN



DRIVEWAY SAND SET PAVERS-  
CORALSTONE SELECT WHITE

## ELEVATION - NORTH



**PS1**  
LIME PLASTER STUCCO FINISH



**MT1**  
METAL MULLIONS, DOORS, COLUMN  
COVERS - KYNAR FINISH



**ST1**  
STONE CLADDING-  
HONED AND FILLED



**ST2**  
STONE CLADDING-  
ROUGH FACE



**GL1**  
IMPACT GLAZING-  
CLEAR



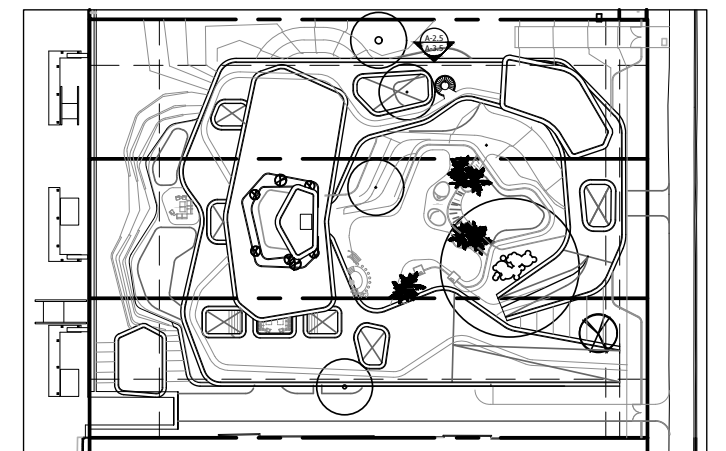
**GL2**  
IMPACT GLASS HANDRAIL-  
CLEAR, RADIUSED CORNERS



**WD1**  
EXTERIOR ALUMINUM CLADDING-  
POWDERCOATED PTF FINISH

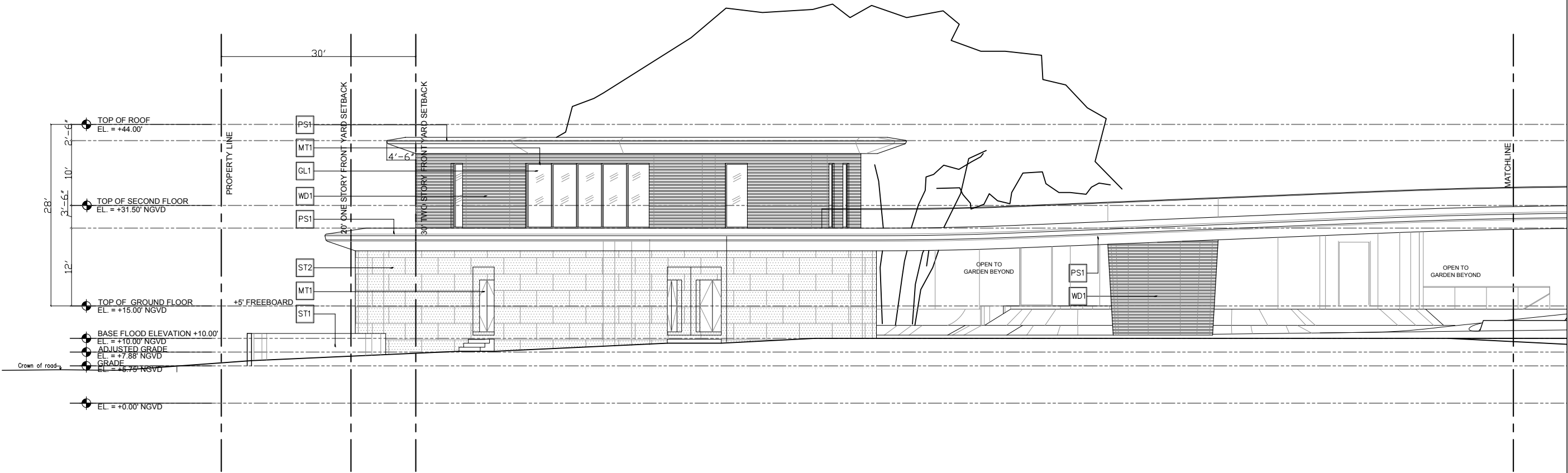


**WD2**  
EXTERIOR ALUMINUM SCREEN-  
POWDERCOATED PTF FINISH, 50% OPEN





ELEVATION - NORTH



1 NORTH ELEVATION  
SCALE: 1/16"=1'-0"



PS1  
LIME PLASTER STUCCO FINISH



MT1  
METAL MULLIONS, DOORS, COLUMN  
COVERS - KYNAR FINISH



ST1  
STONE CLADDING-  
HONED AND FILLED



ST2  
STONE CLADDING-  
ROUGH FACE



GL1  
IMPACT GLAZING-  
CLEAR



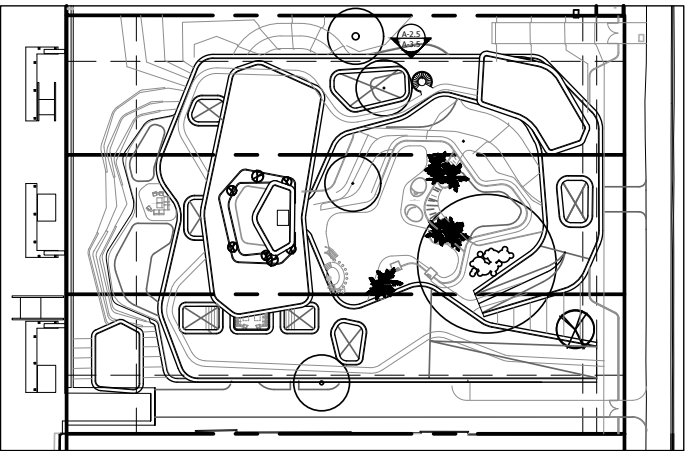
GL2  
IMPACT GLASS HANDRAIL-  
CLEAR, RADIUSED CORNERS



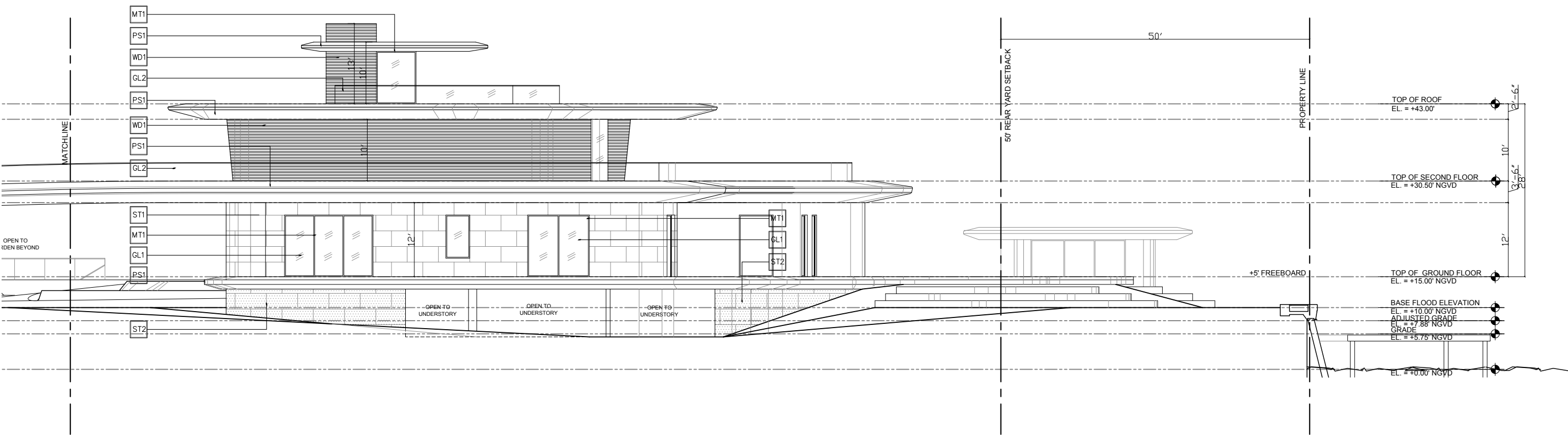
WD1  
EXTERIOR ALUMINUM CLADDING-  
POWDERCOATED PTF FINISH



WD2  
EXTERIOR ALUMINUM SCREEN-  
POWDERCOATED PTF FINISH, 50% OPEN



ELEVATION - NORTH



**PS1**  
LIME PLASTER STUCCO FINISH



**MT1**  
METAL MULLIONS, DOORS, COLUMN  
COVERS - KYNAR FINISH



**ST1**  
STONE CLADDING-  
HONED AND FILLED



**ST2**  
STONE CLADDING-  
ROUGH FACE



**GL1**  
IMPACT GLAZING-  
CLEAR



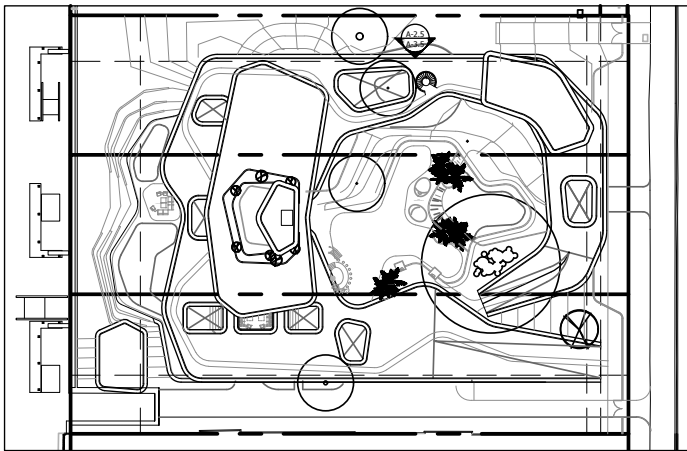
**GL2**  
IMPACT GLASS HANDRAIL-  
CLEAR, RADIUSED CORNERS



**WD1**  
EXTERIOR ALUMINUM CLADDING-  
POWDERCOATED PTF FINISH

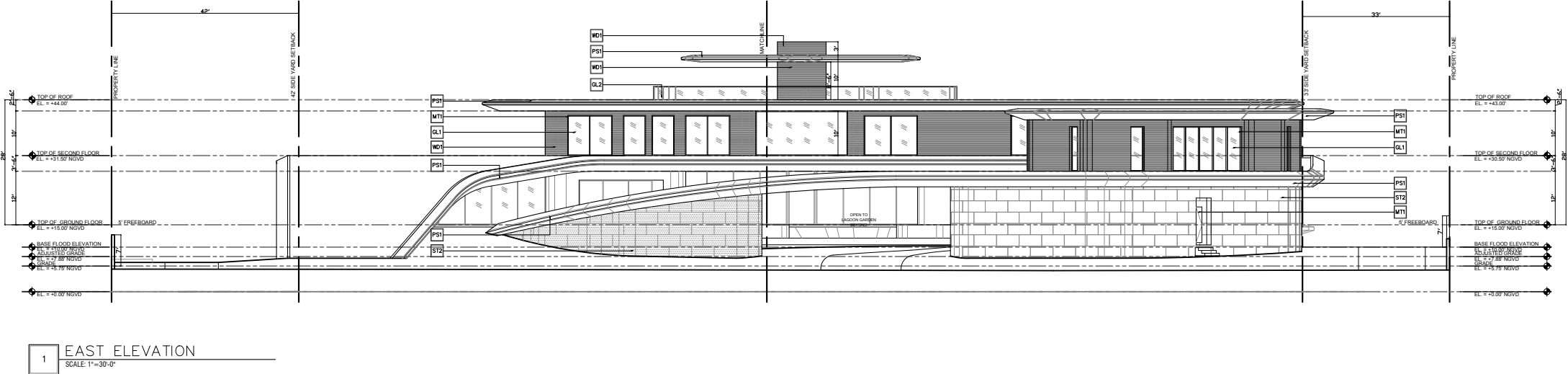


**WD2**  
EXTERIOR ALUMINUM SCREEN-  
POWDERCOATED PTF FINISH, 50% OPEN





ELEVATION - EAST



**PS1**  
LIME PLASTER STUCCO FINISH



**MT1**  
METAL MULLIONS, DOORS, COLUMN  
COVERS - KYNAR FINISH



**ST1**  
STONE CLADDING -  
HONED AND FILLED



**ST2**  
STONE CLADDING -  
ROUGH FACE



**GL1**  
IMPACT GLAZING -  
CLEAR



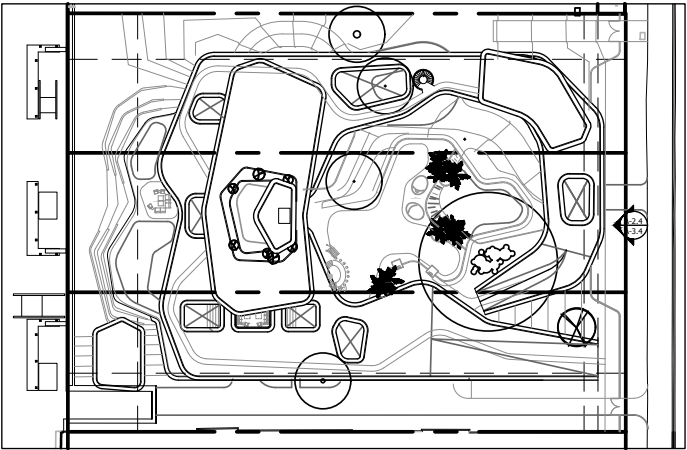
**GL2**  
IMPACT GLASS HANDRAIL -  
CLEAR, RADIUS CORNERS



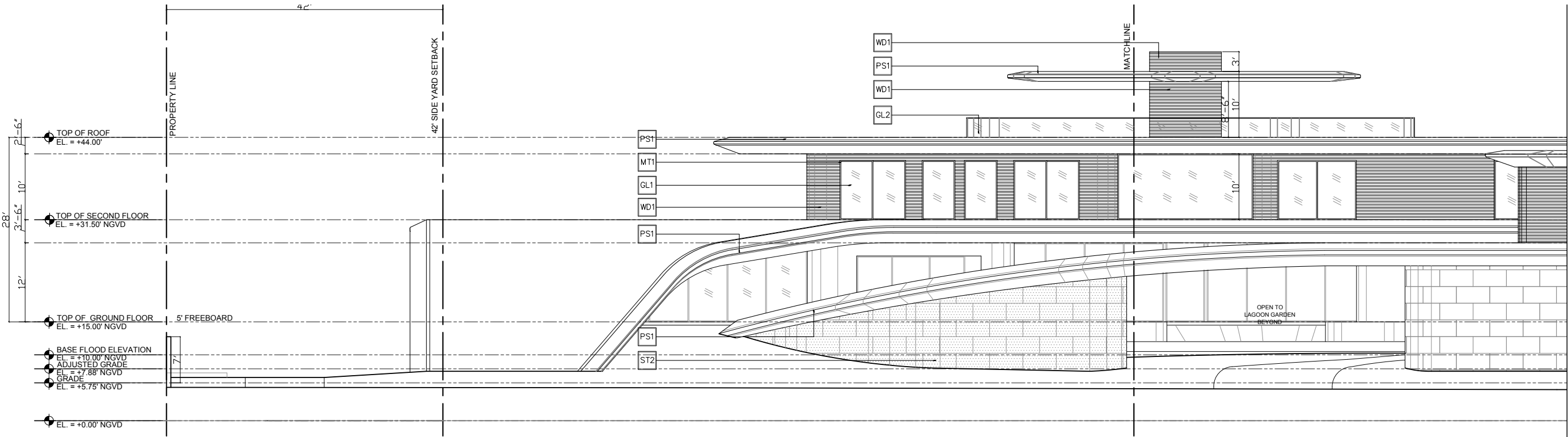
**WD1**  
EXTERIOR ALUMINUM CLADDING -  
POWDERCOATED PTF FINISH



**WD2**  
EXTERIOR ALUMINUM SCREEN -  
POWDERCOATED PTF FINISH, 50% OPEN



ELEVATION - EAST



1 EAST ELEVATION  
SCALE: 1/16"=1'-0"



PS1  
LIME PLASTER STUCCO FINISH



MT1  
METAL MULLIONS, DOORS, COLUMN  
COVERS - KYNAR FINISH



ST1  
STONE CLADDING-  
HONED AND FILLED



ST2  
STONE CLADDING-  
ROUGH FACE



GL1  
IMPACT GLAZING-  
CLEAR



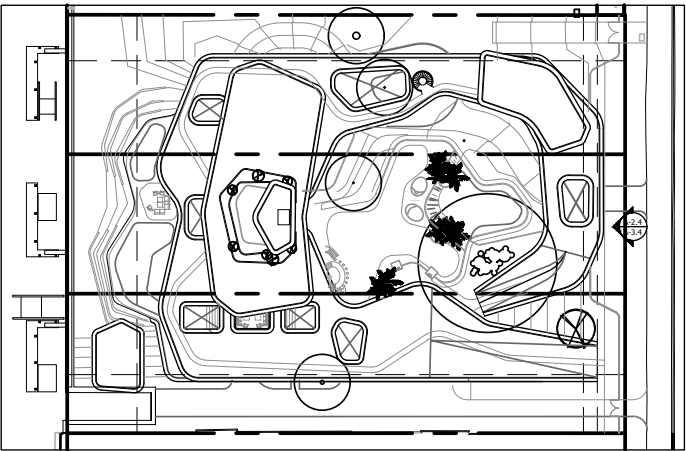
GL2  
IMPACT GLASS HANDRAIL-  
CLEAR, RADIUS CORNERS



WD1  
EXTERIOR ALUMINUM CLADDING-  
POWDERCOATED PTF FINISH

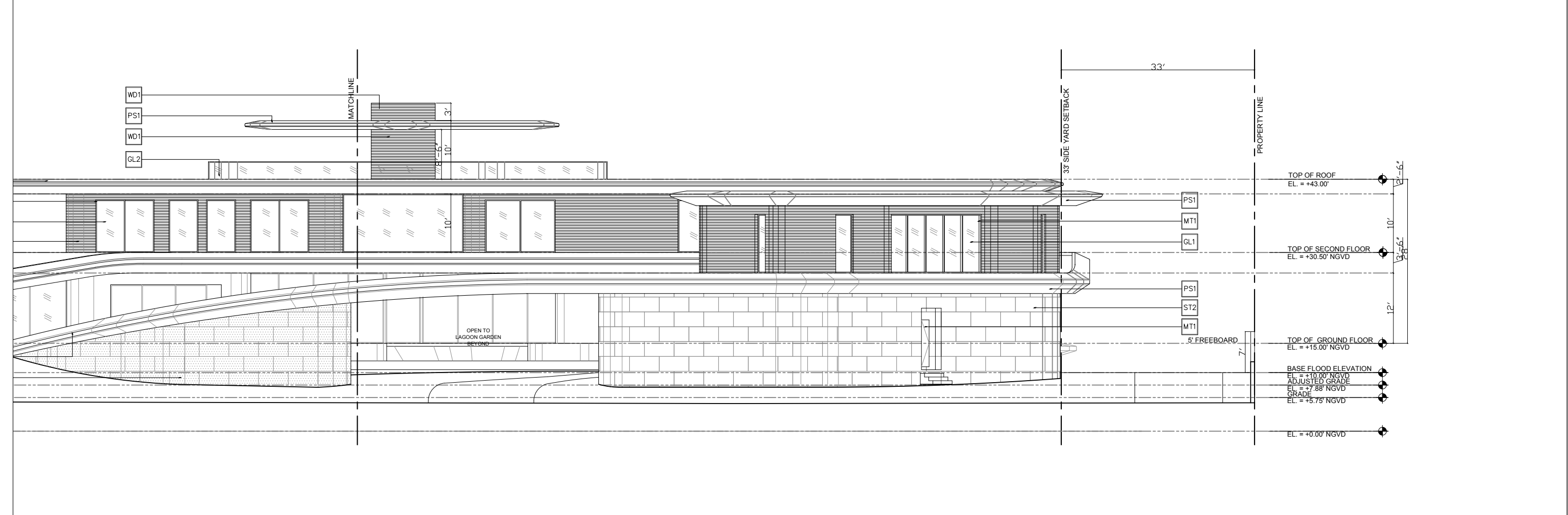


WD2  
EXTERIOR ALUMINUM SCREEN-  
POWDERCOATED PTF FINISH, 50% OPEN





ELEVATION - EAST



**PS1**  
LIME PLASTER STUCCO FINISH



**MT1**  
METAL MULLIONS, DOORS, COLUMN  
COVERS - KYNAR FINISH



**ST1**  
STONE CLADDING-  
HONED AND FILLED



**ST2**  
STONE CLADDING-  
ROUGH FACE



**GL1**  
IMPACT GLAZING-  
CLEAR



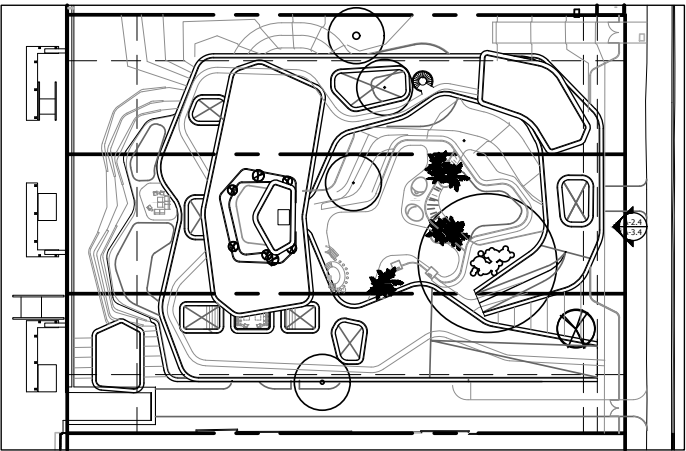
**GL2**  
IMPACT GLASS HANDRAIL-  
CLEAR, RADIUSED CORNERS



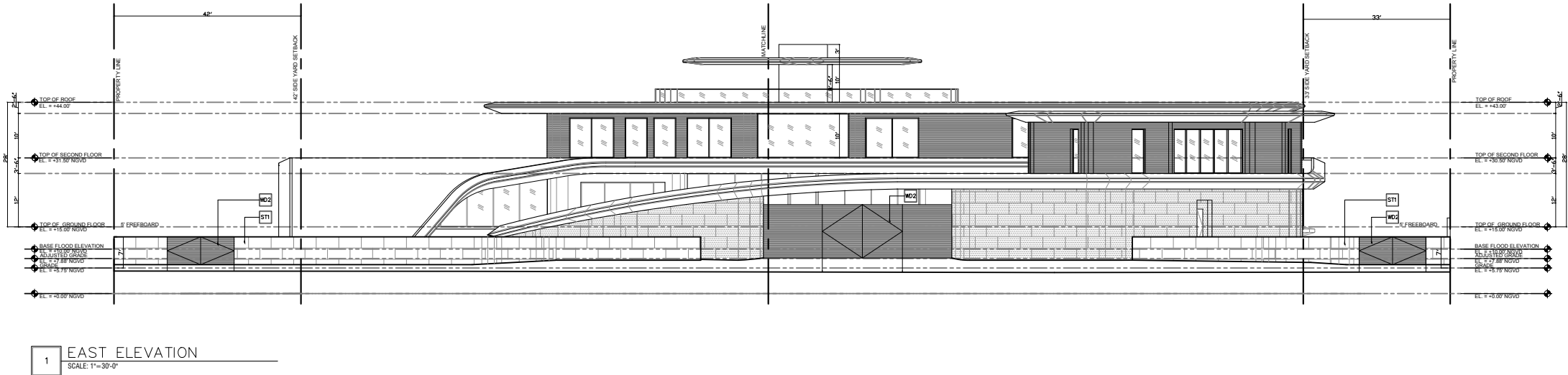
**WD1**  
EXTERIOR ALUMINUM CLADDING-  
POWDERCOATED PTF FINISH



**WD2**  
EXTERIOR ALUMINUM SCREEN-  
POWDERCOATED PTF FINISH, 50% OPEN



ELEVATION - EAST- PROPERTY WALL



**PS1**  
LIME PLASTER STUCCO FINISH



**MT1**  
METAL MULLIONS, DOORS, COLUMN  
COVERS - KYNAR FINISH



**ST1**  
STONE CLADDING-  
HONED AND FILLED



**ST2**  
STONE CLADDING-  
ROUGH FACE



**GL1**  
IMPACT GLAZING-  
CLEAR



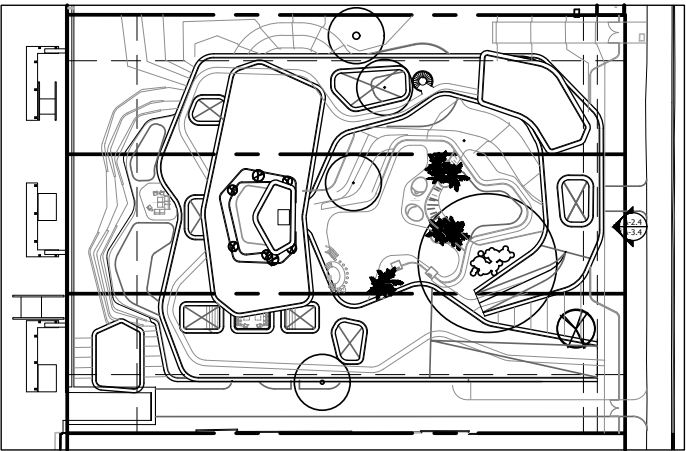
**GL2**  
IMPACT GLASS HANDRAIL-  
CLEAR, RADIUS CORNERS



**WD1**  
EXTERIOR ALUMINUM CLADDING-  
POWDERCOATED PTF FINISH

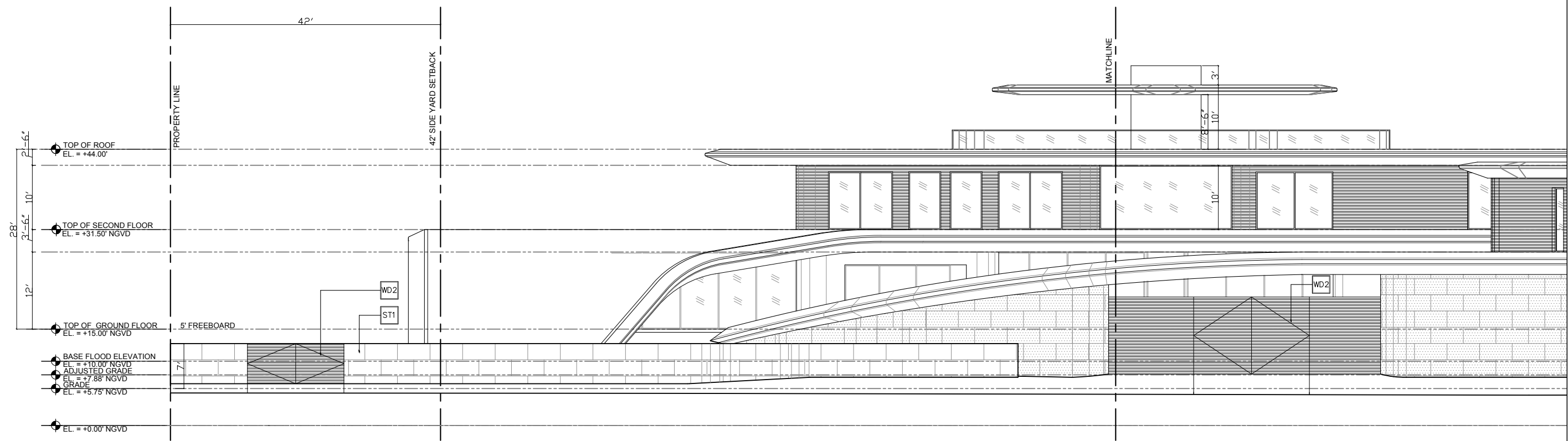


**WD2**  
EXTERIOR ALUMINUM SCREEN-  
POWDERCOATED PTF FINISH, 50% OPEN





# ELEVATION - EAST PROPERTY WALL



1 EAST ELEVATION  
SCALE: 1/16"=1'-0"



**PS1**  
LIME PLASTER STUCCO FINISH



**MT1**  
METAL MULLIONS, DOORS, COLUMN  
COVERS - KYNAR FINISH



**ST1**  
STONE CLADDING-  
HONED AND FILLED



**ST2**  
STONE CLADDING-  
ROUGH FACE



**GL1**  
IMPACT GLAZING-  
CLEAR



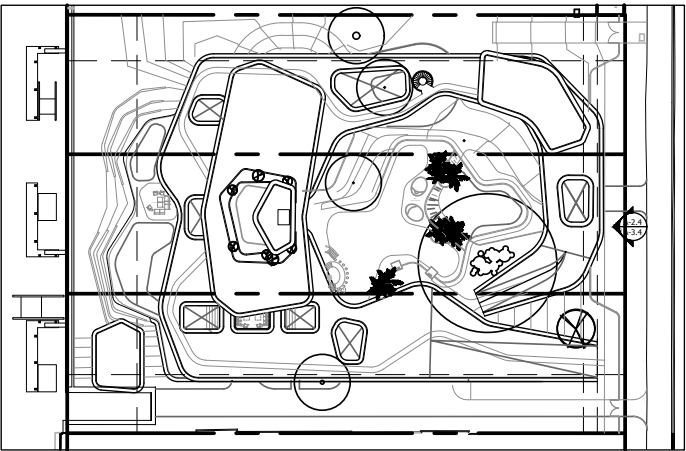
**GL2**  
IMPACT GLASS HANDRAIL-  
CLEAR, RADIUS CORNERS



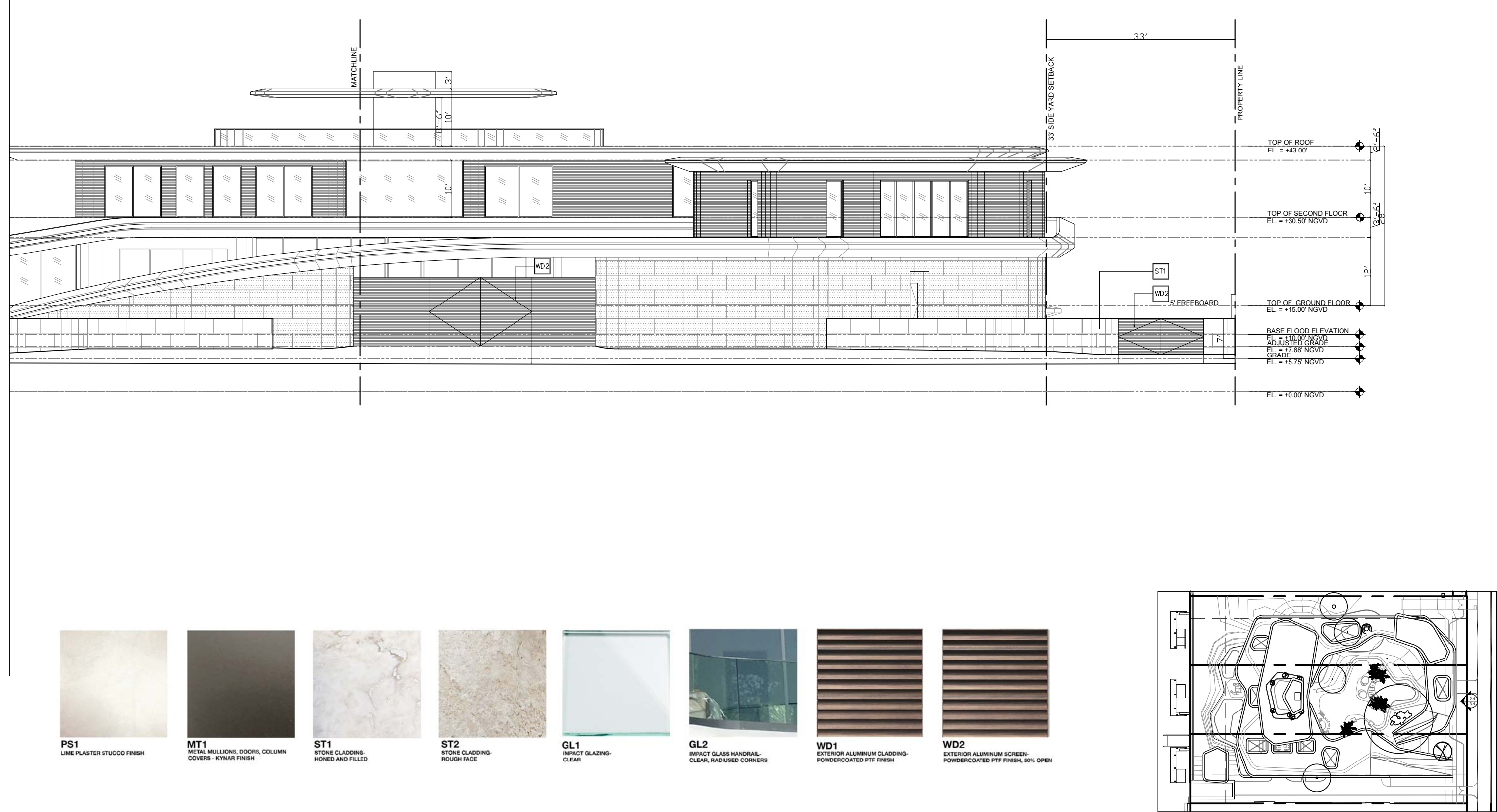
**WD1**  
EXTERIOR ALUMINUM CLADDING-  
POWDERCOATED PTF FINISH



**WD2**  
EXTERIOR ALUMINUM SCREEN-  
POWDERCOATED PTF FINISH, 50% OPEN

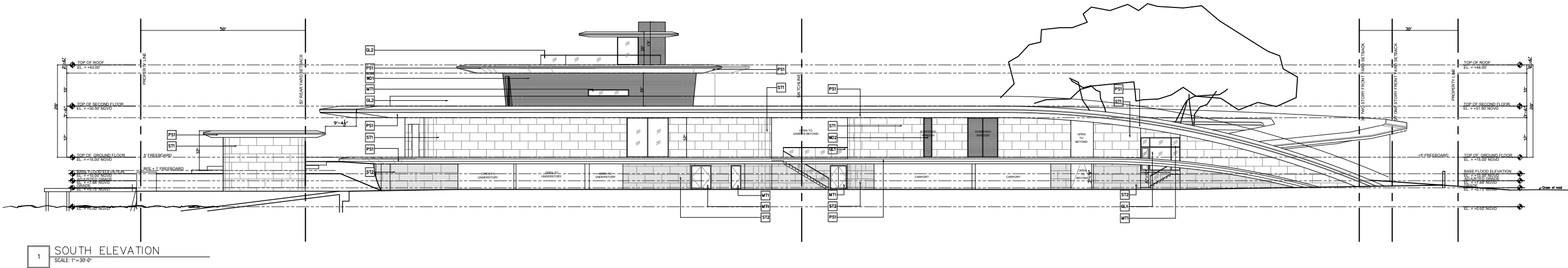


ELEVATION - EAST PROPERTY WALL





ELEVATION - SOUTH



**PS1**  
LIME PLASTER STUCCO FINISH



**MT1**  
METAL MULLIONS, DOORS, COLUMN  
COVERS - KYNAR FINISH



**ST1**  
STONE CLADDING-  
HONED AND FILLED



**ST2**  
STONE CLADDING-  
ROUGH FACE



**GL1**  
IMPACT GLAZING-  
CLEAR



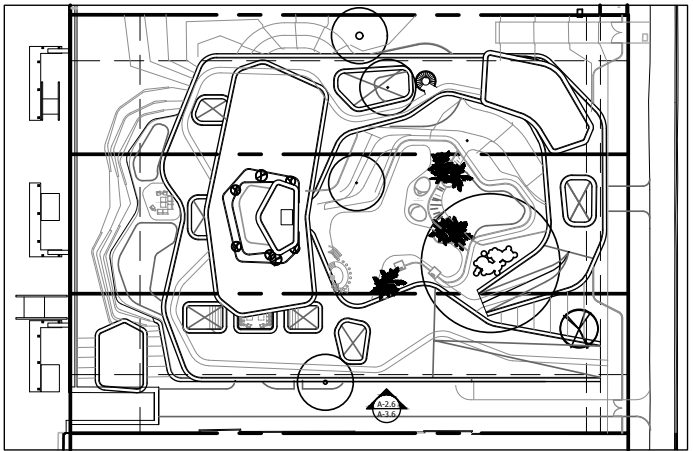
**GL2**  
IMPACT GLASS HANDRAIL-  
CLEAR, RADIUS CORNERS



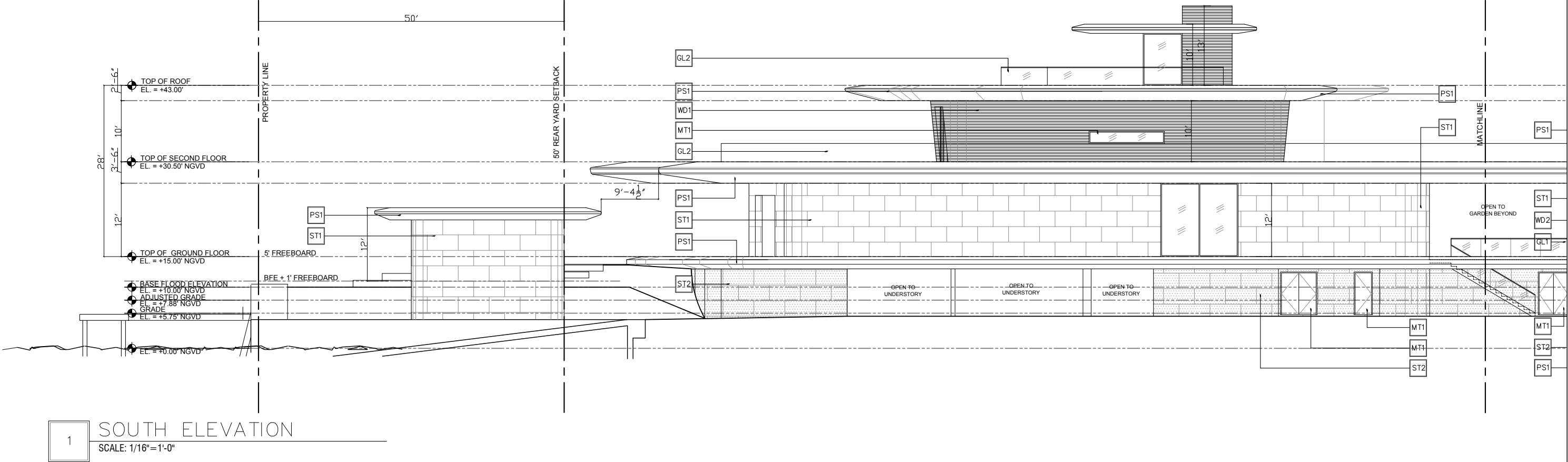
**WD1**  
EXTERIOR ALUMINUM CLADDING-  
POWDERCOATED PTF FINISH



**WD2**  
EXTERIOR ALUMINUM SCREEN-  
POWDERCOATED PTF FINISH, 50% OPEN



ELEVATION - SOUTH



**PS1**  
LIME PLASTER STUCCO FINISH



**MT1**  
METAL MULLIONS, DOORS, COLUMN  
COVERS - KYNAR FINISH



**ST1**  
STONE CLADDING-  
HONED AND FILLED



**ST2**  
STONE CLADDING-  
ROUGH FACE



**GL1**  
IMPACT GLAZING-  
CLEAR



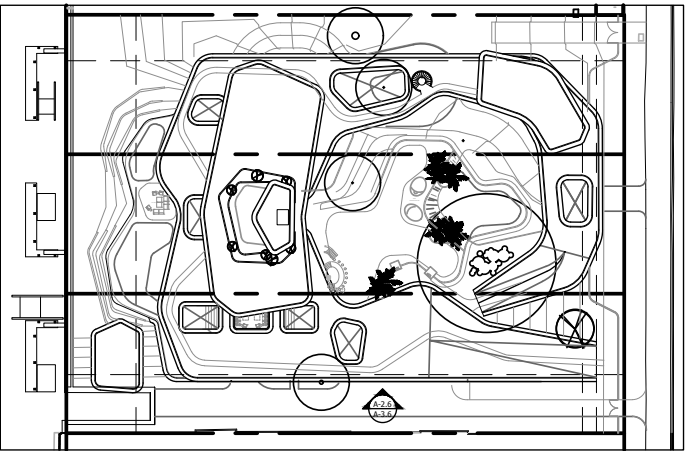
**GL2**  
IMPACT GLASS HANDRAIL-  
CLEAR, RADIUS CORNERS



**WD1**  
EXTERIOR ALUMINUM CLADDING-  
POWDERCOATED PTF FINISH

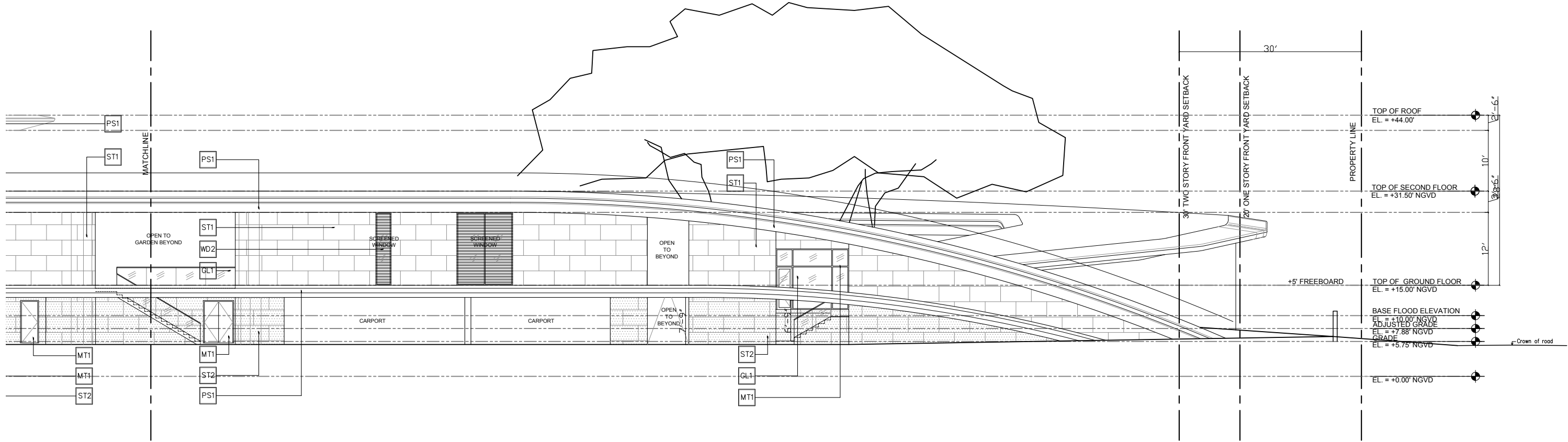


**WD2**  
EXTERIOR ALUMINUM SCREEN-  
POWDERCOATED PTF FINISH, 50% OPEN





ELEVATION - SOUTH



**PS1**  
LIME PLASTER STUCCO FINISH



**MT1**  
METAL MULLIONS, DOORS, COLUMN  
COVERS - KYNAR FINISH



**ST1**  
STONE CLADDING-  
HONED AND FILLED



**ST2**  
STONE CLADDING-  
ROUGH FACE



**GL1**  
IMPACT GLAZING-  
CLEAR



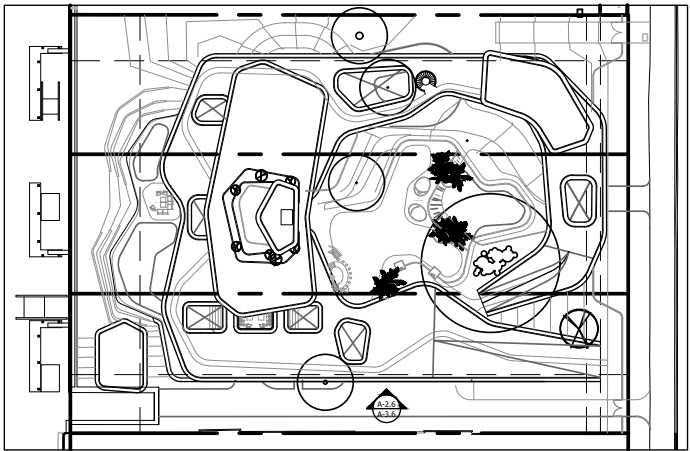
**GL2**  
IMPACT GLASS HANDRAIL-  
CLEAR, RADIUS CORNERS



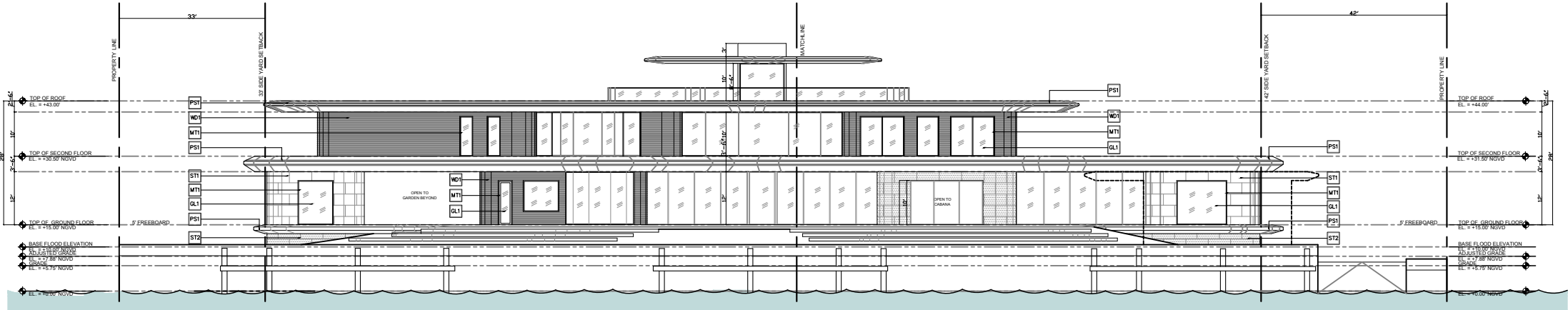
**WD1**  
EXTERIOR ALUMINUM CLADDING-  
POWDERCOATED PTF FINISH



**WD2**  
EXTERIOR ALUMINUM SCREEN-  
POWDERCOATED PTF FINISH, 50% OPEN



## ELEVATION - WEST



1 WEST ELEVATION

**PS1**  
LIME PLASTER STUCCO FINISH



**MT1**  
METAL MULLIONS, DOORS, COLUMN  
COVERS - KYNAR FINISH

**ST1**  
STONE CLADDING-  
HONED AND FILLED



**ST2**  
STONE CLADDING-  
ROUGH FACE



## GL1



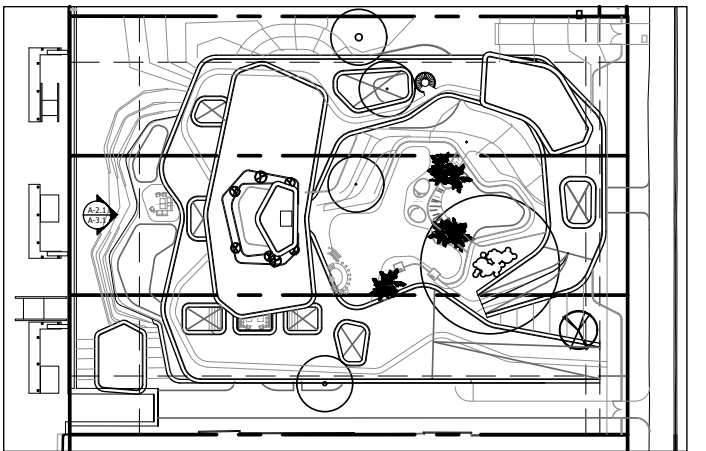
**GL2**  
IMPACT GLASS HANDRAIL-



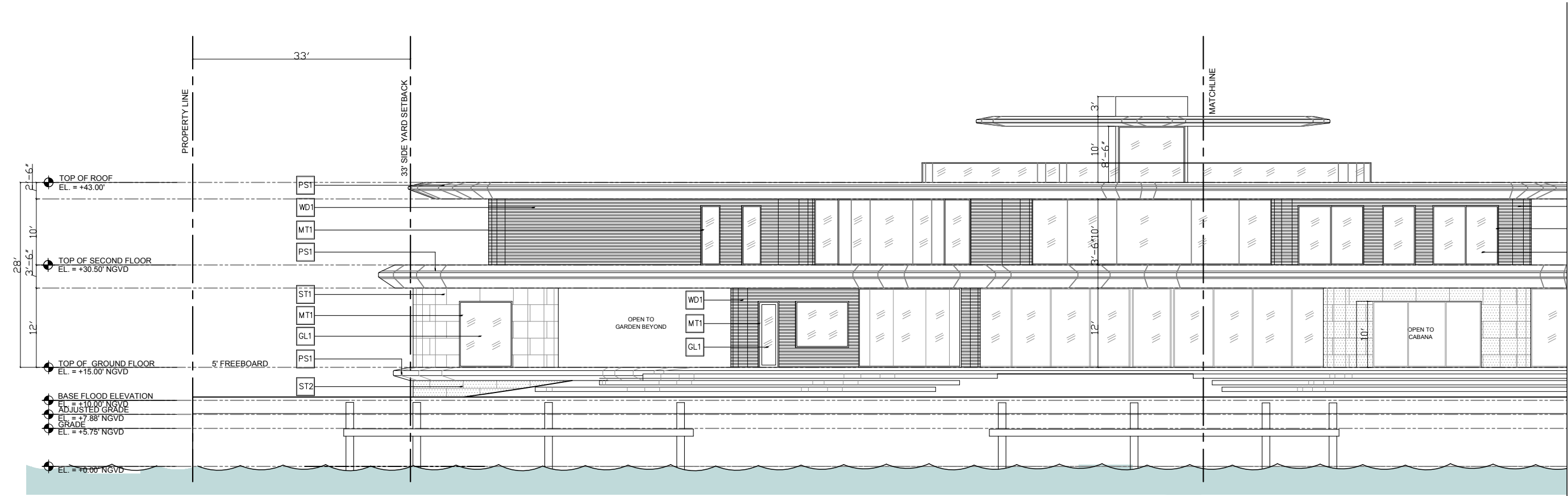
**WD1**  
EXTERIOR ALUMINUM CLADDING-  
EQUIVALENTS PER TABLE



**WD2**  
EXTERIOR ALUMINUM SCREEN-



ELEVATION - WEST



1 WEST ELEVATION  
SCALE: 1/16"=1'-0"



**PS1**  
LIME PLASTER STUCCO FINISH



**MT1**  
METAL MULLIONS, DOORS, COLUMN  
COVERS - KYNAR FINISH



**ST1**  
STONE CLADDING-  
HONED AND FILLED



**ST2**  
STONE CLADDING-  
ROUGH FACE



**GL1**  
IMPACT GLAZING-  
CLEAR



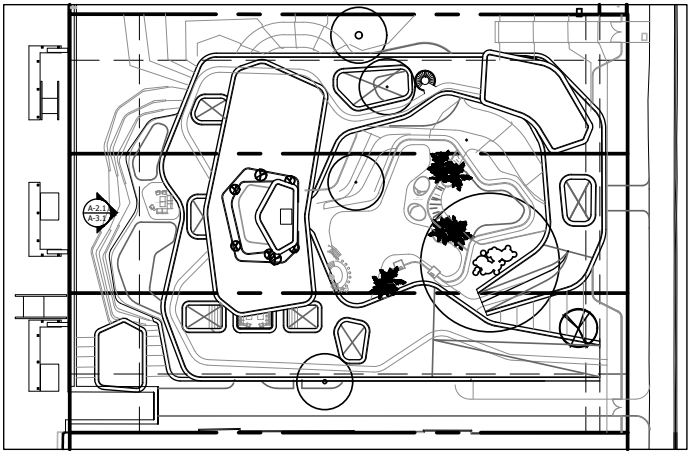
**GL2**  
IMPACT GLASS HANDRAIL-  
CLEAR, RADIUSED CORNERS



**WD1**  
EXTERIOR ALUMINUM CLADDING-  
POWDERCOATED PTF FINISH

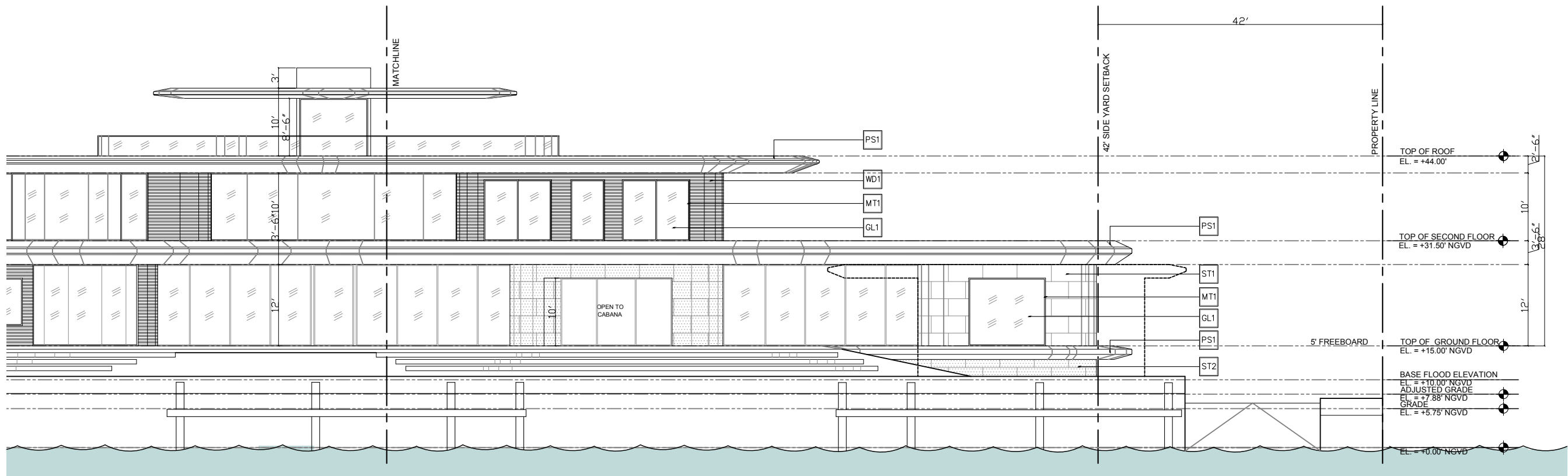


**WD2**  
EXTERIOR ALUMINUM SCREEN-  
POWDERCOATED PTF FINISH, 50% OPEN





ELEVATION - WEST



**PS1**  
LIME PLASTER STUCCO FINISH



**MT1**  
METAL MULLIONS, DOORS, COLUMN  
COVERS - KYNAR FINISH



**ST1**  
STONE CLADDING-  
HONED AND FILLED



**ST2**  
STONE CLADDING-  
ROUGH FACE



**GL1**  
IMPACT GLAZING-  
CLEAR



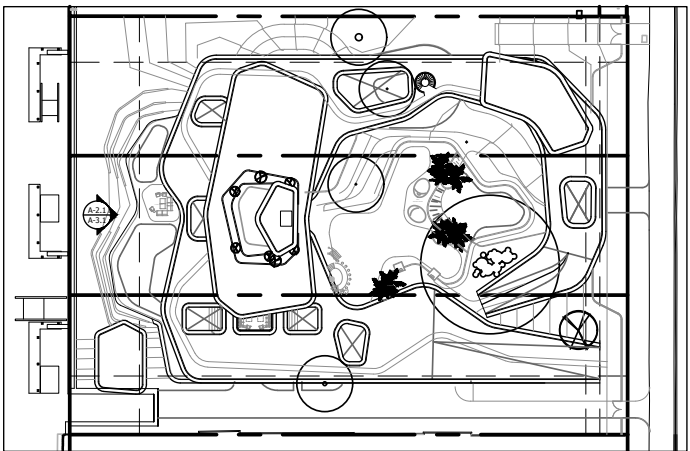
**GL2**  
IMPACT GLASS HANDRAIL-  
CLEAR, RADIUSED CORNERS



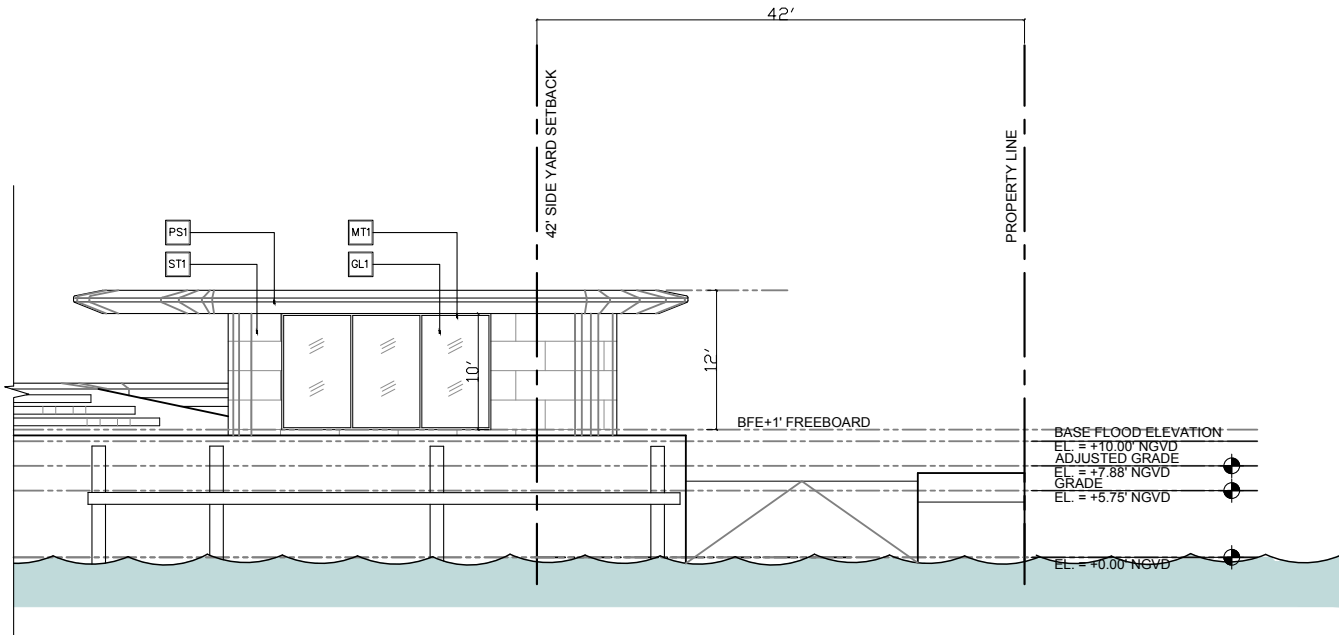
**WD1**  
EXTERIOR ALUMINUM CLADDING-  
POWDERCOATED PTF FINISH



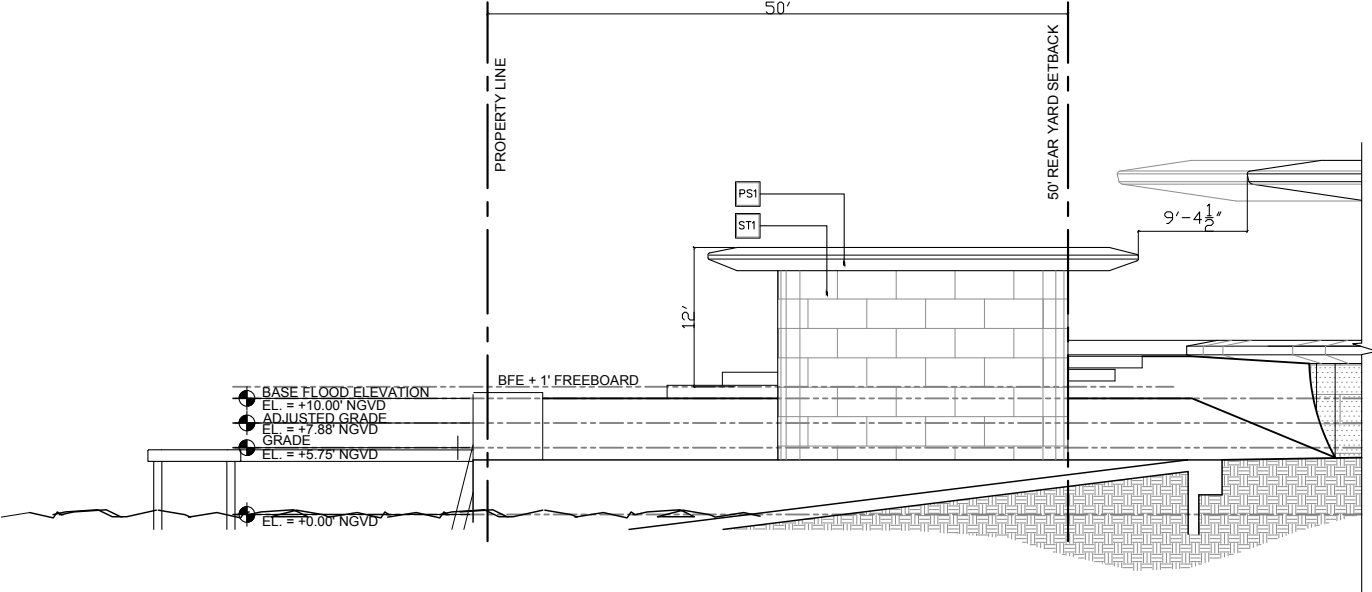
**WD2**  
EXTERIOR ALUMINUM SCREEN-  
POWDERCOATED PTF FINISH, 50% OPEN



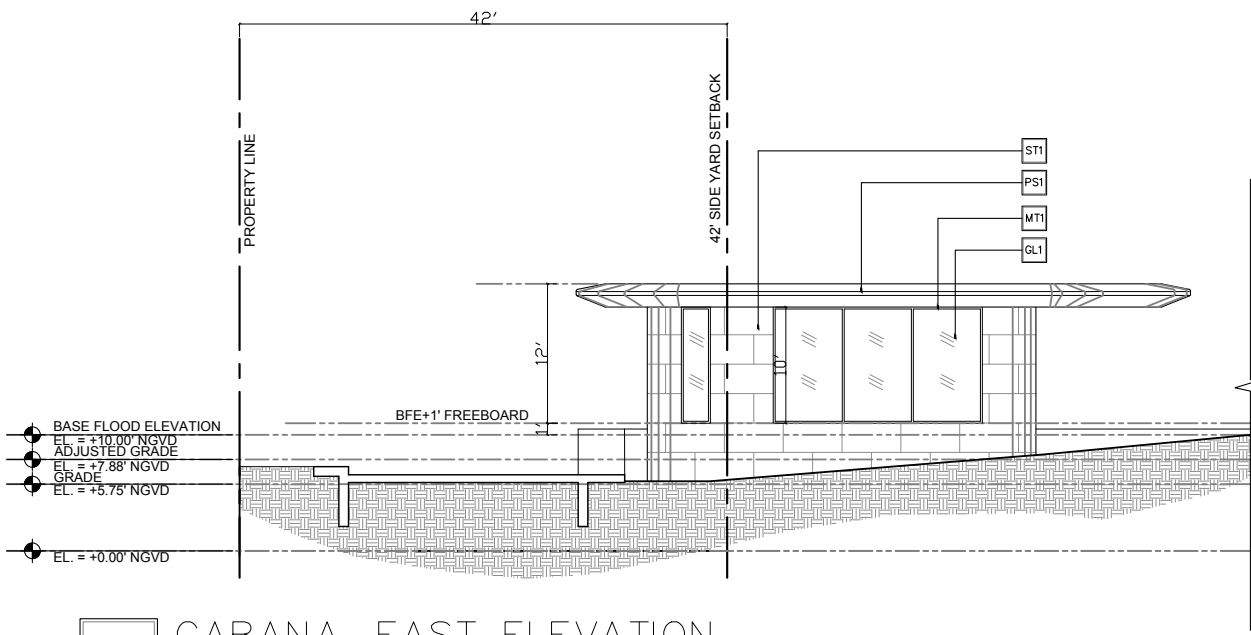
ELEVATIONS - ACCESSORY STRUCTURE



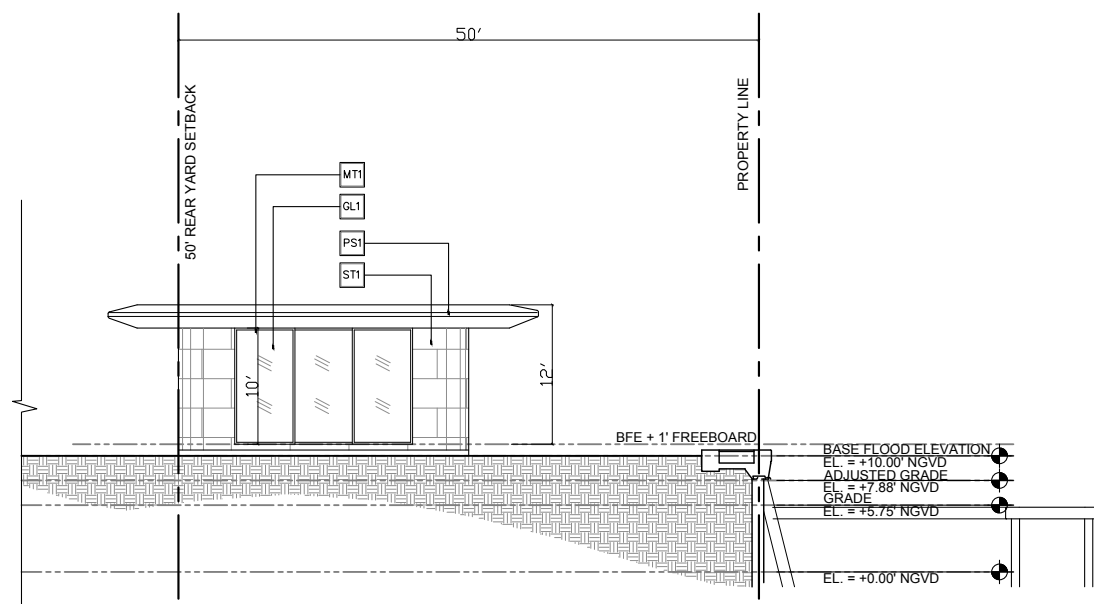
1 CABANA—WEST ELEVATION  
SCALE: 1/16"=1'-0"



3 CABANA—SOUTH ELEVATION  
SCALE: 1/16"=1'-0"



2 CABANA—EAST ELEVATION  
SCALE: 1/16"=1'-0"



4 CABANA—NORTH ELEVATION  
SCALE: 1/16"=1'-0"



PS1  
LIME PLASTER STUCCO FINISH



MT1  
METAL MULLIONS, DOORS, COLUMN  
COVERS - KYNAR FINISH



ST1  
STONE CLADDING-  
HONED AND FILLED



ST2  
STONE CLADDING-  
ROUGH FACE



GL1  
IMPACT GLAZING-  
CLEAR



GL2  
IMPACT GLASS HANDRAIL-  
CLEAR, RADIUS CORNERS



WD1  
EXTERIOR ALUMINUM CLADDING-  
POWDERCOATED PTF FINISH



WD2  
EXTERIOR ALUMINUM SCREEN-  
POWDERCOATED PTF FINISH, 50% OPEN