

REVISION SCHEDULE:

PROJECT INFO:



C.M.B. LANDSCAPE DRB FINAL SUBMITTAL 08.08.22

NEW RESIDENCE | 225 NORTH HIBISCUS DRIVE | MIAMI BEACH, FLORIDA

CLIENT / PROPERTY INFORMATION

PROPERTY ADDRESS
225 NORTH HIBISCUS DRIVE,
MIAMI BEACH FLORIDA, 33139

EXISTING VEGETATION SUMMARY

The existing vegetation located on the property is composed of mostly Coconut palms, Royal palms, three Norfolk Island Pines, Strangler Fig and a Weeping Fig tree near the West and South property line. Please note that the landscape architect is requesting to preserve the Weeping Fig along the property line and remove all of the existing vegetation on site. Please note that the landscape architect intends to provide an improved landscape design that shall mitigate for the palm and tree loss by introducing new, native trees to the site and meet all landscape requirements set forth by C.M.B. Chapter 126.

SCOPE OF WORK

- New landscape design to complement new Residence

INDEX OF SHEETS

- L0.0 Landscape Cover + Sheet Index
L1.0 Existing Tree Survey + Disposition Plan
L1.1 Existing Tree Chart, Mitigation Summary, Notes + Details
L2.0 Landscape Plan
L2.1 Second Floor Landscape Plan
L3.0 Plant List, Landscape Code + Details

NEW RESIDENCE
225 NORTH HIBISCUS DRIVE
MIAMI BEACH, FL 33139



CHRISTOPHER CAWLEY, RLA
Florida License LA 6666786

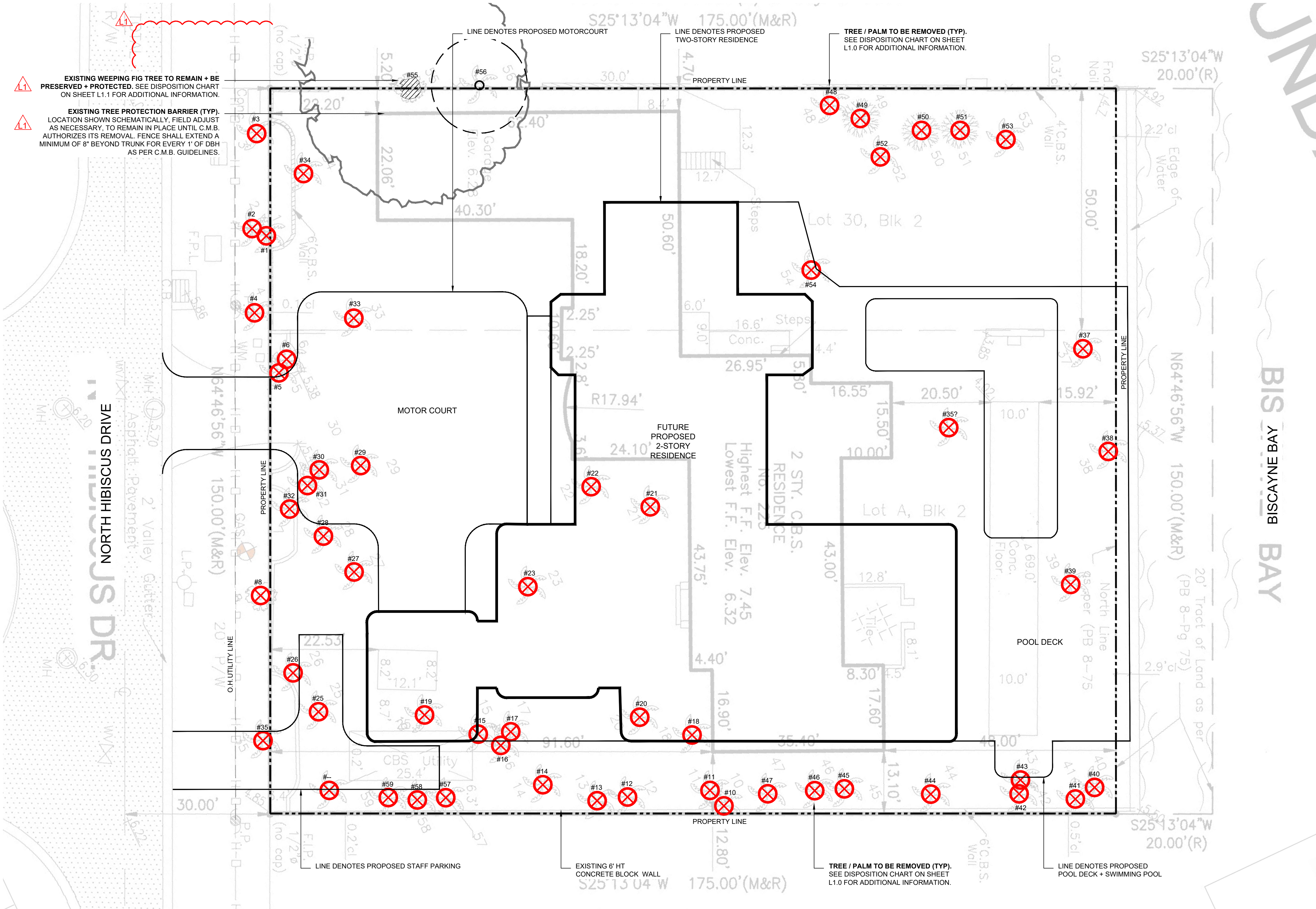
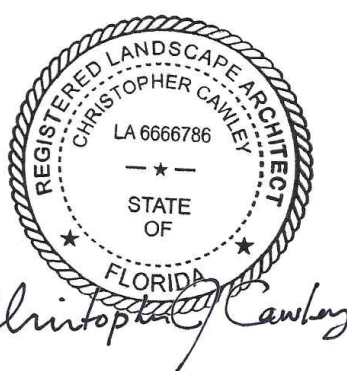
DATE:

AUGUST 08, 2022

SHEET NO:

L0.0

NEW RESIDENCE
225 NORTH HIBISCUS DRIVE
MIAMI BEACH, FL 33139



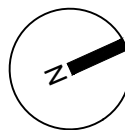
C.M.B. CHAPTER 46, DIVISION 2 - TREE INVENTORY + DISPOSITION PLAN NOTES

- THIS 'EXISTING TREE INVENTORY + DISPOSITION PLAN' HAS BEEN PREPARED IN ACCORDANCE WITH THE CITY OF MIAMI BEACH, CHAPTER 46 - ENVIRONMENT, DIVISION 2, TREE PRESERVATION and PROTECTION ORDINANCE.
- EXISTING TREE, PALM, AND VEGETATION INFORMATION AS INDICATED HAS BEEN PREPARED AS AN OVERLAY ON THE SURVEY PREPARED BY AMERICAN SERVICES OF MIAMI, CORP. DATED 05.05.22 THE INFORMATION AS PRESENTED HEREIN HAS BEEN FIELD VERIFIED BY THE LANDSCAPE ARCHITECT ON 03.17.22
- MIAMI BEACH P+Z MUST APPROVE LANDSCAPE PLANS PRIOR TO REMOVING ANY TREES OR PALMS WITH A DBH BETWEEN 6" AND 12" INCHES. A WRITTEN TREE REMOVAL PERMIT IS REQUIRED FROM CITY OF MIAMI BEACH URBAN FORESTRY / P.W FOR THE REMOVAL OF TREES / PALMS WITH A DBH GREATER THAN 12" INCHES OR IN THE R.O.W.
- THE OWNER RESERVES THE RIGHT TO REMOVE ANY VEGETATION NOT LOCATED WITHIN THE CITY R.O.W. w/ a D.B.H. OF LESS THAN 6" WITHOUT OBTAINING A TREE REMOVAL PERMIT.
- THERE ARE NO TREES or PALMS LOCATED ON THIS PROPERTY THAT WILL REQUIRE TEMPORARY IRRIGATION. ALL EXISTING TREES + PALMS ARE MATURE AND ARE CURRENTLY THRIVING WITHOUT SUPPLEMENTAL IRRIGATION WATER.

C.M.B. EXISTING TREE SURVEY LEGEND

- TREE or PALM TO BE REMOVED. SEE CHART L-1.1.
- TREE or PALM PROTECTION FENCE

EXISTING TREE SURVEY + DISPOSITION PLAN

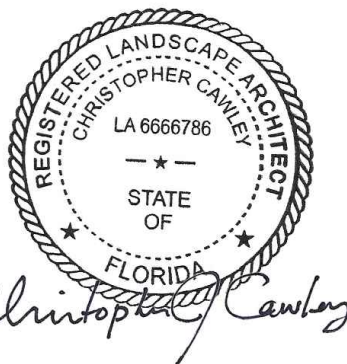


L1.0

REVISION SCHEDULE:

PROJECT INFO:

NEW RESIDENCE
225 NORTH HIBISCUS DRIVE
MIAMI BEACH, FL 33139



DATE:

AUGUST 08, 2022

SHEET NO:

L1.1

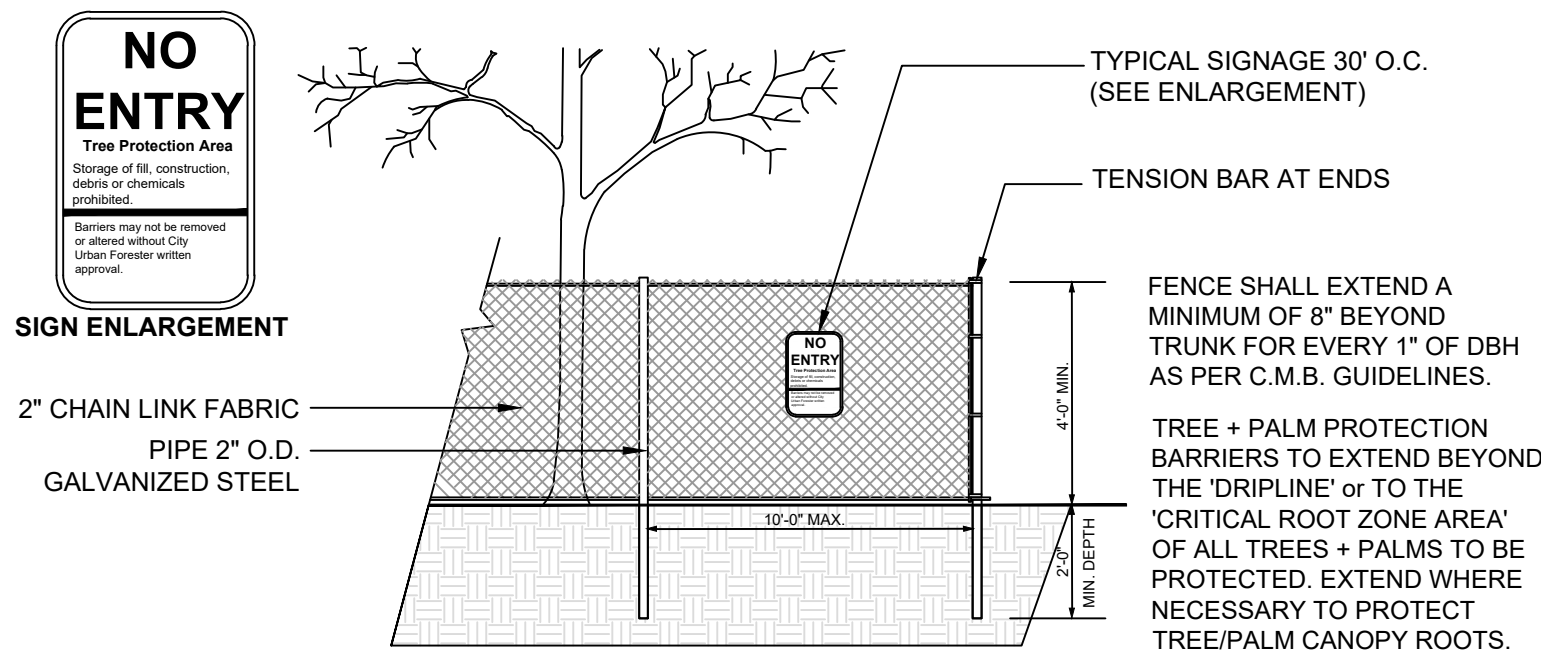
C.M.B. EXISTING TREE INVENTORY + DISPOSITION CHART - 255 NORTH HIBISCUS DRIVE

NUMBER	COMMON NAME	BOTANICAL NAME	SPECIMEN	D.B.H.(IN)	HEIGHT(FT)	SPREAD(FT)	CONDITION	DISPOSITION	MITIGATION	COMMENTS
1	COCONUT PALM	Cocos nucifera	NO	10"	30'	25'	FAIR	REMOVE	1 REP. TREE	IN CONFLICT WITH SITE DESIGN, MITIGATION PROVIDED.
2	COCONUT PALM	Cocos nucifera	NO	10"	30'	25'	FAIR	REMOVE	1 REP. TREE	IN CONFLICT WITH SITE DESIGN, MITIGATION PROVIDED.
3	COCONUT PALM	Cocos nucifera	YES	18"	30'	15'	FAIR	REMOVE	1 REP. TREE	IN CONFLICT WITH SITE DESIGN, MITIGATION PROVIDED.
4	ROYAL PALM	Roystonea elata	YES	18"	60'	20'	FAIR	REMOVE	1 REP. TREE	IN CONFLICT WITH SITE DESIGN, MITIGATION PROVIDED.
5	ROYAL PALM	Roystonea elata	YES	18"	60'	20'	FAIR	REMOVE	1 REP. TREE	IN CONFLICT WITH SITE DESIGN, MITIGATION PROVIDED.
6	COCONUT PALM	Cocos nucifera	YES	12"	60'	20'	FAIR	REMOVE	1 REP. TREE	IN CONFLICT WITH SITE DESIGN, MITIGATION PROVIDED.
7	ROYAL PALM	Roystonea elata	YES	24"	70'	20'	FAIR	REMOVE	1 REP. TREE	IN CONFLICT WITH SITE DESIGN, MITIGATION PROVIDED.
8	WEeping FIG TREE	Ficus benjimina	YES	30"	30'	18'	FAIR	REMOVE	30"	IN CONFLICT WITH SITE DESIGN, MITIGATION PROVIDED.
9	BIRD OF PARADISE	Strelitzia	YES	12"	30'	18'	FAIR	REMOVE	N/A	NOT A TREE, NO MITIGATION REQUIRED.
10	ROYAL PALM	Roystonea elata	YES	22"	60'	20'	FAIR	REMOVE	1 REP. TREE	IN CONFLICT WITH SITE DESIGN, MITIGATION PROVIDED.
11	COCONUT PALM	Cocos nucifera	YES	18"	50'	20'	FAIR	REMOVE	1 REP. TREE	IN CONFLICT WITH SITE DESIGN, MITIGATION PROVIDED.
12	COCONUT PALM	Cocos nucifera	YES	18"	50'	20'	FAIR	REMOVE	1 REP. TREE	IN CONFLICT WITH SITE DESIGN, MITIGATION PROVIDED.
13	COCONUT PALM	Cocos nucifera	YES	18"	50'	20'	FAIR	REMOVE	1 REP. TREE	IN CONFLICT WITH SITE DESIGN, MITIGATION PROVIDED.
14	ROYAL PALM	Roystonea elata	YES	22"	60'	20'	FAIR	REMOVE	1 REP. TREE	IN CONFLICT WITH SITE DESIGN, MITIGATION PROVIDED.
15	COCONUT PALM	Cocos nucifera	YES	18"	60'	20'	FAIR	REMOVE	1 REP. TREE	IN CONFLICT WITH SITE DESIGN, MITIGATION PROVIDED.
16	COCONUT PALM	Cocos nucifera	YES	18"	60'	20'	FAIR	REMOVE	1 REP. TREE	IN CONFLICT WITH SITE DESIGN, MITIGATION PROVIDED.
17	COCONUT PALM	Cocos nucifera	YES	18"	60'	20'	FAIR	REMOVE	1 REP. TREE	IN CONFLICT WITH SITE DESIGN, MITIGATION PROVIDED.
18	ROYAL PALM	Roystonea elata	YES	22"	60'	20'	FAIR	REMOVE	1 REP. TREE	IN CONFLICT WITH SITE DESIGN, MITIGATION PROVIDED.
19	ROYAL PALM	Roystonea elata	YES	18"	50'	20'	FAIR	REMOVE	1 REP. TREE	IN CONFLICT WITH SITE DESIGN, MITIGATION PROVIDED.
20	ROYAL PALM	Roystonea elata	YES	18"	70'	20'	FAIR	REMOVE	1 REP. TREE	IN CONFLICT WITH SITE DESIGN, MITIGATION PROVIDED.
21	COCONUT PALM	Cocos nucifera	YES	22"	50'	20'	FAIR	REMOVE	1 REP. TREE	IN CONFLICT WITH SITE DESIGN, MITIGATION PROVIDED.
22	ROYAL PALM	Roystonea elata	YES	24"	70'	20'	FAIR	REMOVE	1 REP. TREE	IN CONFLICT WITH SITE DESIGN, MITIGATION PROVIDED.
23	ROYAL PALM	Roystonea elata	YES	24"	70'	20'	FAIR	REMOVE	1 REP. TREE	IN CONFLICT WITH SITE DESIGN, MITIGATION PROVIDED.
24	ROYAL PALM	Roystonea elata	YES	24"	70'	20'	FAIR	REMOVE	1 REP. TREE	IN CONFLICT WITH SITE DESIGN, MITIGATION PROVIDED.
25	COCONUT PALM	Cocos nucifera	YES	18"	50'	20'	FAIR	REMOVE	1 REP. TREE	IN CONFLICT WITH SITE DESIGN, MITIGATION PROVIDED.
26	ROYAL PALM	Roystonea elata	YES	22"	60'	20'	FAIR	REMOVE	1 REP. TREE	IN CONFLICT WITH SITE DESIGN, MITIGATION PROVIDED.
27	ROYAL PALM	Roystonea elata	YES	18"	70'	20'	FAIR	REMOVE	1 REP. TREE	IN CONFLICT WITH SITE DESIGN, MITIGATION PROVIDED.
28	CANARY ISLAND DATE PALM	Pheonix canariensis	YES	24"	70'	20'	FAIR	REMOVE	1 REP. TREE	IN CONFLICT WITH SITE DESIGN, MITIGATION PROVIDED.
29	COCONUT PALM	Cocos nucifera	NO	10"	40'	20'	FAIR	REMOVE	1 REP. TREE	IN CONFLICT WITH SITE DESIGN, MITIGATION PROVIDED.
30	ROYAL PALM	Roystonea elata	YES	22"	70'	20'	FAIR	REMOVE	1 REP. TREE	IN CONFLICT WITH SITE DESIGN, MITIGATION PROVIDED.
31	COCONUT PALM	Cocos nucifera	YES	18"	70'	20'	FAIR	REMOVE	1 REP. TREE	IN CONFLICT WITH SITE DESIGN, MITIGATION PROVIDED.
32	MACARTHUR PALM	Ptychosperma macarthur	NO	8"	30'	15'	FAIR	REMOVE	1 REP. TREE	IN CONFLICT WITH SITE DESIGN, MITIGATION PROVIDED.
33	COCONUT PALM	Cocos nucifera	NO	10"	30'	20'	FAIR	REMOVE	1 REP. TREE	IN CONFLICT WITH SITE DESIGN, MITIGATION PROVIDED.
34	HONG KONG ORCHID	Bauhinia x blakeana	YES	18"	60'	20'	FAIR	REMOVE	1 REP. TREE	IN CONFLICT WITH SITE DESIGN, MITIGATION PROVIDED.
35	ROYAL PALM	Roystonea elata	YES	18"	60'	20'	FAIR	REMOVE	1 REP. TREE	IN CONFLICT WITH SITE DESIGN, MITIGATION PROVIDED.
36	ROYAL PALM	Roystonea elata	YES	24"	70'	20'	FAIR	REMOVE	1 REP. TREE	IN CONFLICT WITH SITE DESIGN, MITIGATION PROVIDED.
37	COCONUT PALM	Cocos nucifera	NO	10"	40'	20'	FAIR	REMOVE	1 REP. TREE	IN CONFLICT WITH SITE DESIGN, MITIGATION PROVIDED.
38	COCONUT PALM	Cocos nucifera	YES	18"	30'	20'	FAIR	REMOVE	1 REP. TREE	IN CONFLICT WITH SITE DESIGN, MITIGATION PROVIDED.
39	COCONUT PALM	Cocos nucifera	YES	16"	50'	20'	FAIR	REMOVE	1 REP. TREE	IN CONFLICT WITH SITE DESIGN, MITIGATION PROVIDED.
40	COCONUT PALM	Cocos nucifera	YES	12"	30'	20'	FAIR	REMOVE	1 REP. TREE	IN CONFLICT WITH SITE DESIGN, MITIGATION PROVIDED.
41	COCONUT PALM	Cocos nucifera	YES	12"	30'	20'	FAIR	REMOVE	1 REP. TREE	IN CONFLICT WITH SITE DESIGN, MITIGATION PROVIDED.
42	ROYAL PALM	Roystonea elata	YES	22"	40'	20'	FAIR	REMOVE	1 REP. TREE	IN CONFLICT WITH SITE DESIGN, MITIGATION PROVIDED.
43	ROYAL PALM	Roystonea elata	YES	22"	40'	20'	FAIR	REMOVE	1 REP. TREE	IN CONFLICT WITH SITE DESIGN, MITIGATION PROVIDED.
44	ROYAL PALM	Roystonea elata	YES	30"	70'	20'	FAIR	REMOVE	1 REP. TREE	IN CONFLICT WITH SITE DESIGN, MITIGATION PROVIDED.
45	COCONUT PALM	Cocos nucifera	YES	18"	50'	20'	FAIR	REMOVE	1 REP. TREE	IN CONFLICT WITH SITE DESIGN, MITIGATION PROVIDED.
46	COCONUT PALM	Cocos nucifera	YES	18"	50'	20'	FAIR	REMOVE	1 REP. TREE	IN CONFLICT WITH SITE DESIGN, MITIGATION PROVIDED.
47	COCONUT PALM	Cocos nucifera	YES	18"	50'	20'	FAIR	REMOVE	1 REP. TREE	IN CONFLICT WITH SITE DESIGN, MITIGATION PROVIDED.
48	COCONUT PALM	Cocos nucifera	YES	22"	60'	20'	FAIR	REMOVE	1 REP. TREE	IN CONFLICT WITH SITE DESIGN, MITIGATION PROVIDED.
49	NORFOLK ISLAND PINE	Araucaria heterophylla	YES	18"	60'	18'	FAIR	REMOVE	18"	IN CONFLICT WITH SITE DESIGN, MITIGATION PROVIDED.
50	NORFOLK ISLAND PINE	Araucaria heterophylla	YES	18"	60'	18'	FAIR	REMOVE	18"	IN CONFLICT WITH SITE DESIGN, MITIGATION PROVIDED.
51	NORFOLK ISLAND PINE	Araucaria heterophylla	YES	18"	60'	18'	FAIR	REMOVE	18"	IN CONFLICT WITH SITE DESIGN, MITIGATION PROVIDED.
52	ROYAL PALM	Roystonea elata	YES	30"	70'	20'	FAIR	REMOVE	1 REP. TREE	IN CONFLICT WITH SITE DESIGN, MITIGATION PROVIDED.
53	COCONUT PALM	Cocos nucifera	YES	12"	50'	20'	FAIR	REMOVE	1 REP. TREE	IN CONFLICT WITH SITE DESIGN, MITIGATION PROVIDED.
54	ROYAL PALM	Roystonea elata	YES	30"	70'	20'	FAIR	REMOVE	1 REP. TREE	IN CONFLICT WITH SITE DESIGN, MITIGATION PROVIDED.
55	WEeping FIG TREE	Ficus benjimina	YES	60"	40'	40'	FAIR	REMAIN	N/A	ON PROPERTY LINE. PRESERVE + PROTECT
56	ROYAL PALM	Roystonea elata	YES	18"	60'	20'	FAIR	REMAIN	N/A	ON PROPERTY LINE. PRESERVE + PROTECT
57	COCONUT PALM	Cocos nucifera	YES	18"	30'	20'	FAIR	REMOVE	1 REP. TREE	IN CONFLICT WITH SITE DESIGN, MITIGATION PROVIDED.
58	ROYAL PALM	Roystonea elata	YES	22"	60'	20'	FAIR	REMOVE	1 REP. TREE	IN CONFLICT WITH SITE DESIGN, MITIGATION PROVIDED.

TOTAL TREE DBH LOSS: 84" + THE REMOVAL OF (53) PALMS *
TREE MITIGATION REQUIRED: (28) REPLACEMENT TREES @ 12'HT x 2" DBH X 6' SPREAD
PALM MITIGATION REQUIRED: (53) REPLACEMENT TREES @ 12'HT x 2" DBH X 6' SPREAD

TREE + PALM PROTECTION FENCES SHALL BE CONSTRUCTED PRIOR TO ANY CONSTRUCTION ACTIVITY INCLUDING GRUBBING FOR ALL TREES OR PALMS THAT ARE 'TO REMAIN, BE PROTECTED, or BE RELOCATED' ONSITE. TPF SHALL BE MAINTAINED AND SHALL REMAIN UNTIL WRITTEN APPROVAL HAS BEEN RECEIVED FROM CITY URBAN FORESTER AFTER ALL SITE WORK HAS BEEN COMPLETED.

NO ACTIVITY OR DISTURBANCE SHOULD OCCUR WITHIN THE FENCED AREAS, INCLUDING VEHICLE USE, STORAGE OF MATERIALS, DUMPING OF LIQUIDS OR MATERIALS, GRADE CHANGES, GRUBBING, AND MECHANICAL TRENCHING FOR IRRIGATION, ELECTRICAL, LIGHTING, ETC. WITHOUT URBAN FORESTER APPROVAL.



C.M.B. TREE + PALM PROTECTION DETAIL (CHAINLINK)

N.T.S.

TREE DISPOSITION SUMMARY

	TOTAL	REMAIN	REMOVE	RELOCATE
TREES	5	1	4	0
PALMS	53	1	52	0

CH 46 TREE PRESERVATION + PROTECTION / TREE + PALM MITIGATION SUMMARY

MIAMI BEACH LANDSCAPE ORDINANCE CHAPTER 46 ENVIRONMENT

TREES		
REMOVED (TOTAL DBH OF TREES)	REPLACEMENT TREES REQUIRED	REPLACEMENT TREES PROVIDED
84" OF DBH	28 @ 12" HEIGHT + 2" DBH + 6' SPREAD OR 14 @ 16" HEIGHT + 4" DBH + 8' SPREAD	28 REPLACEMENT TREES PROVIDED @ 12" HEIGHT + 2" DBH + 6' SPREAD BREAKDOWN: (3) NATIVE GUMBO LIMBO TREES @ 20' - 30' HEIGHT + 12" DBH + 10' SPREAD = 6 REPLACEMENT TREES (3) NATIVE WILD TAMARIND TREE @ 20' HEIGHT + 8" DBH + 10' SPREAD = 12 REPLACEMENT TREES (2) NATIVE VERAWOOD TREES @ 18' HEIGHT + 6" DBH + 10' SPREAD = 6 REPLACEMENT TREES (2) BRAZILIAN BEAUTY LEAF TREES @ 16' HEIGHT + 4" DBH + 8' SPREAD = 4 REPLACEMENT TREES
PALMS		
REMOVED (TOTAL PALMS)	REPLACEMENT TREES REQUIRED	REPLACEMENT TREES PROVIDED
53	53 @ 12" HEIGHT + 2" DBH + 6' SPREAD OR 27 @ 16" HEIGHT + 4" DBH + 8' SPREAD	54 REPLACEMENT TREES PROVIDED @ 12" HEIGHT + 2" DBH + 6' SPREAD BREAKDOWN: (13) BAY RUM TREES @ 16' HEIGHT + 4" DBH + 8' SPREAD = 26 REPLACEMENT TREES (1) NATIVE SEAGRAPE TREE @ 16' HEIGHT + 4" DBH + 8' SPREAD = 4 REPLACEMENT TREES (2) JAPANESE PRIVET TREE @ 16' HEIGHT + 4" DBH + 8' SPREAD = 4 REPLACEMENT TREES (8) NATIVE SIMPSON STOPPER TREES @ 14' HEIGHT + 4" DBH + 6' SPREAD = 16 REPLACEMENT TREES (2) BRAZILIAN BEAUTY LEAF TREES @ 16' HEIGHT + 4" DBH + 8' SPREAD = 4 REPLACEMENT TREES

REVISION SCHEDULE:

PROJECT INFO:

NEW RESIDENCE
225 NORTH HIBISCUS DRIVE
MIAMI BEACH, FL 33139

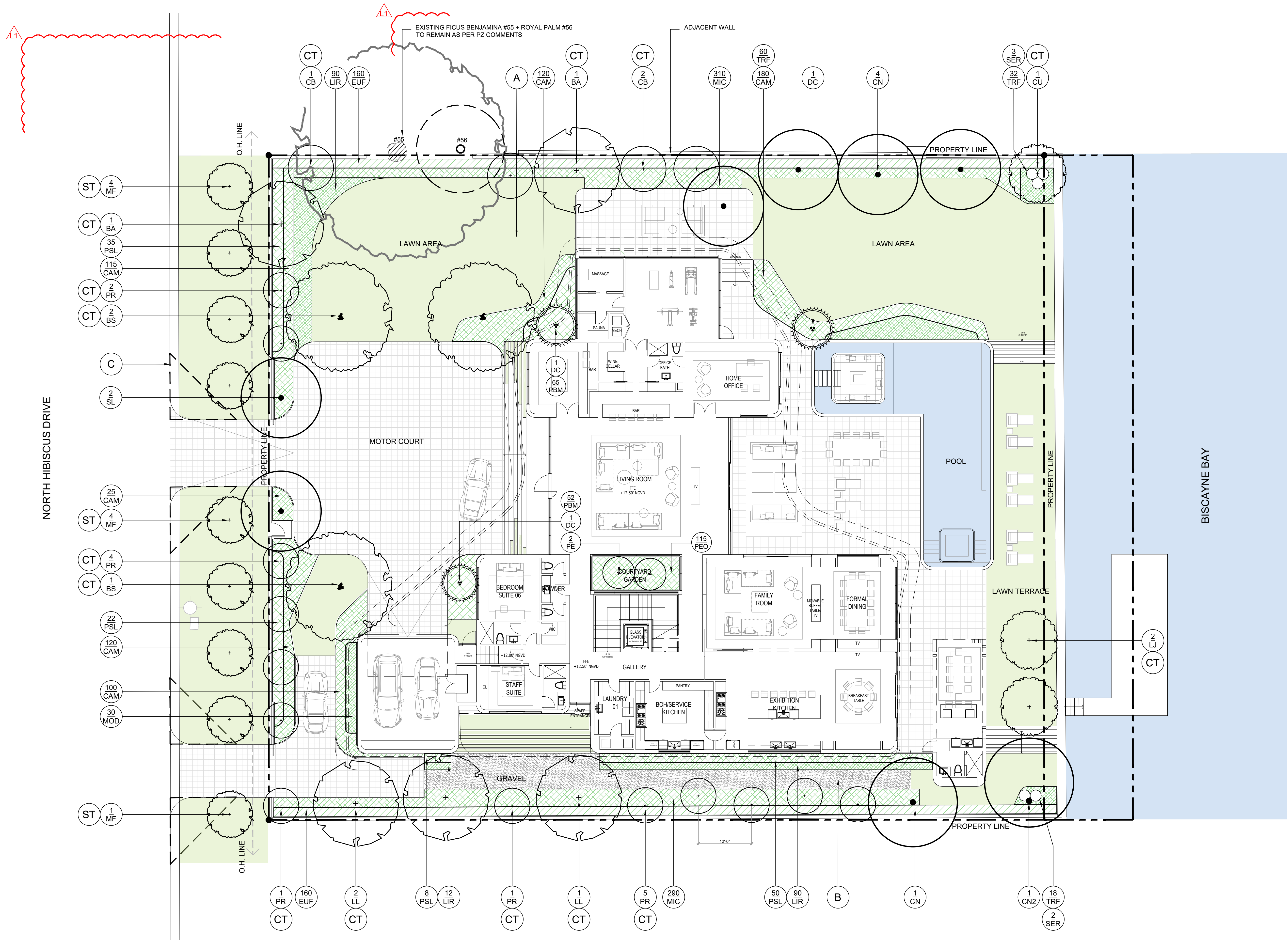


CHRISTOPHER CAWLEY, RLA
Florida License LA 6666786

DATE:

AUGUST 08, 2022

SHEET NO:

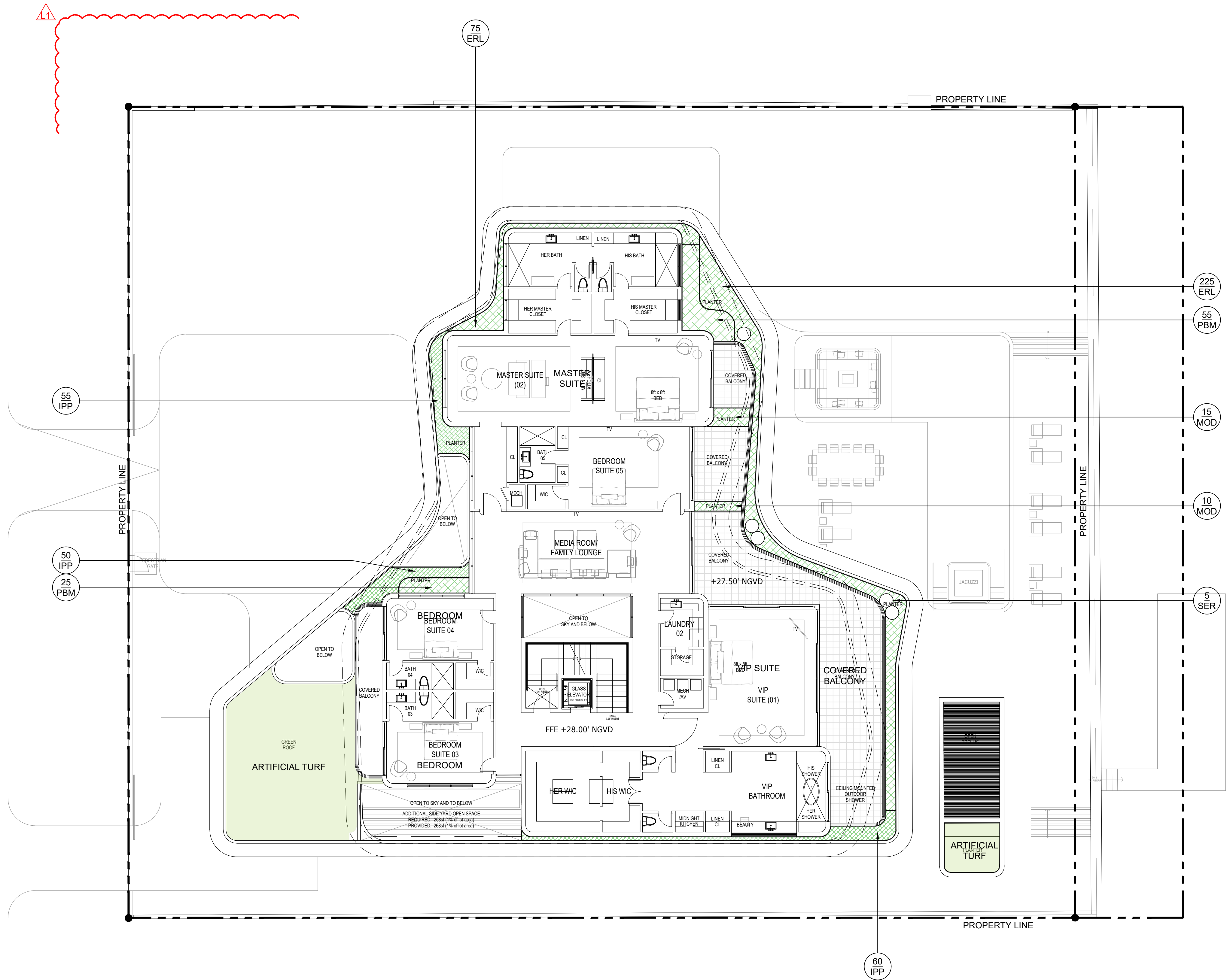


LANDSCAPE PLAN LEGEND

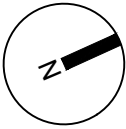
- A NATIVE SEA SHORE PASPALUM LAWN - OVER 2" TOPSOIL BED, SEE PLANTING SPECS
- B 3/8" GREY DECOMPOSED GRANITE AGGREGATE OVER FILTER FABRIC
- C 15' VISIBILITY SITE TRIANGLE AS PER C.M.B. REGULATIONS

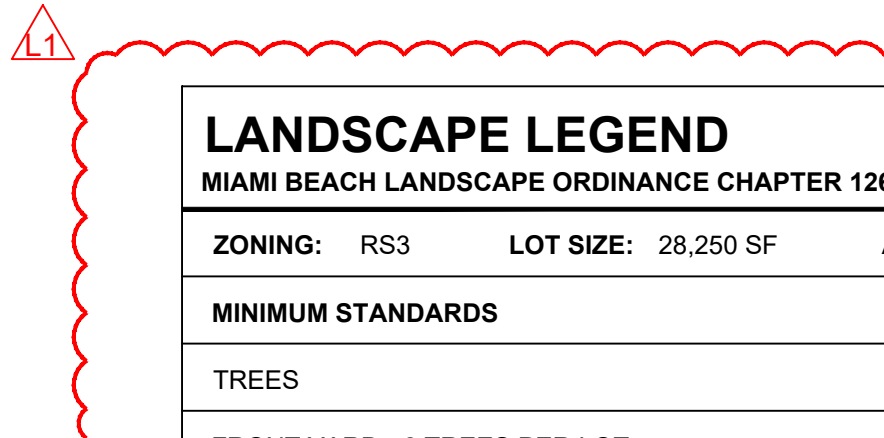
- CT CODE TREE
- ST STREET TREE

NEW RESIDENCE
225 NORTH HIBISCUS DRIVE
MIAMI BEACH, FL 33139



SECOND FLOOR LANDSCAPE PLAN





LANDSCAPE LEGEND

MIAMI BEACH LANDSCAPE ORDINANCE CHAPTER 126 (RS1 - RS4 Single Family Home Residential)

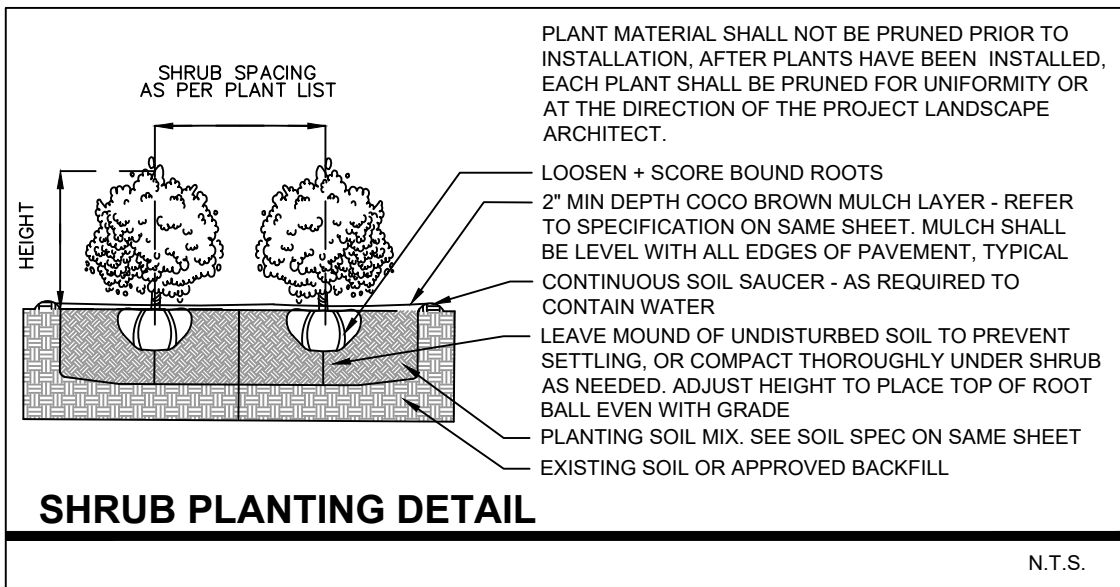
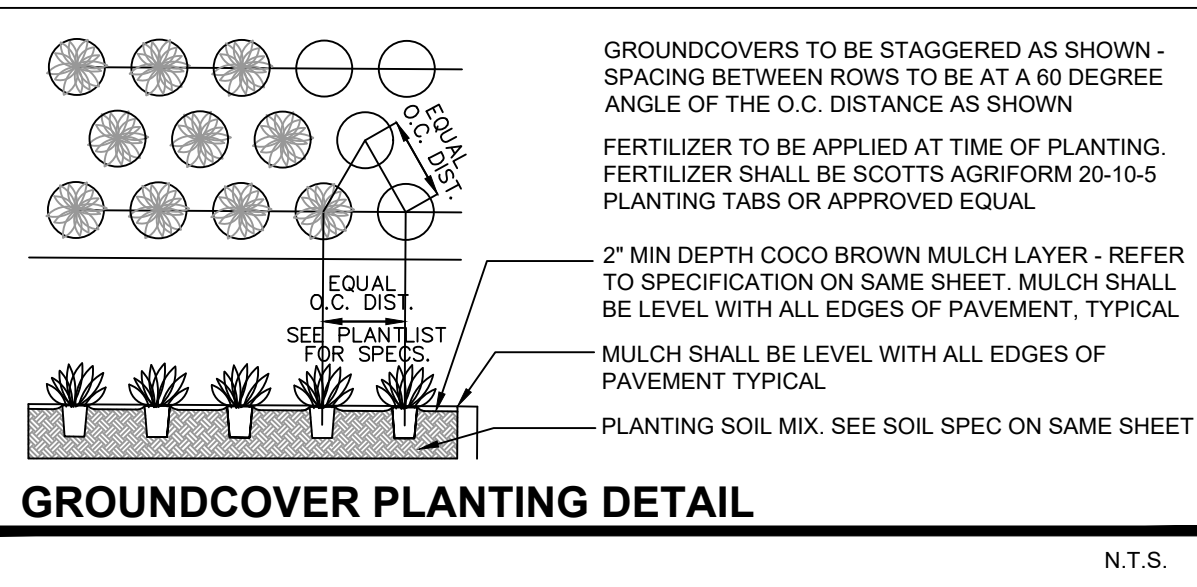
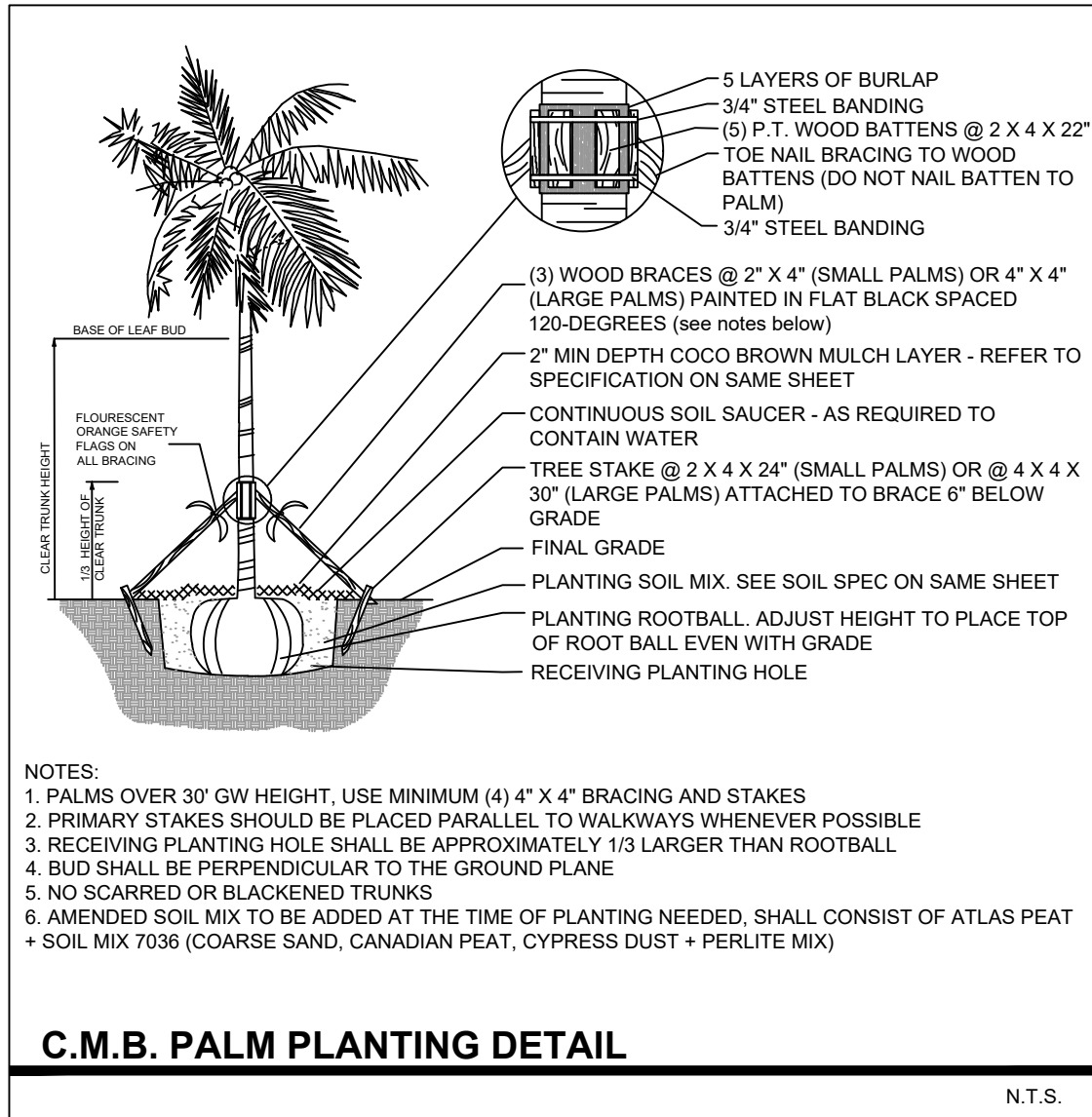
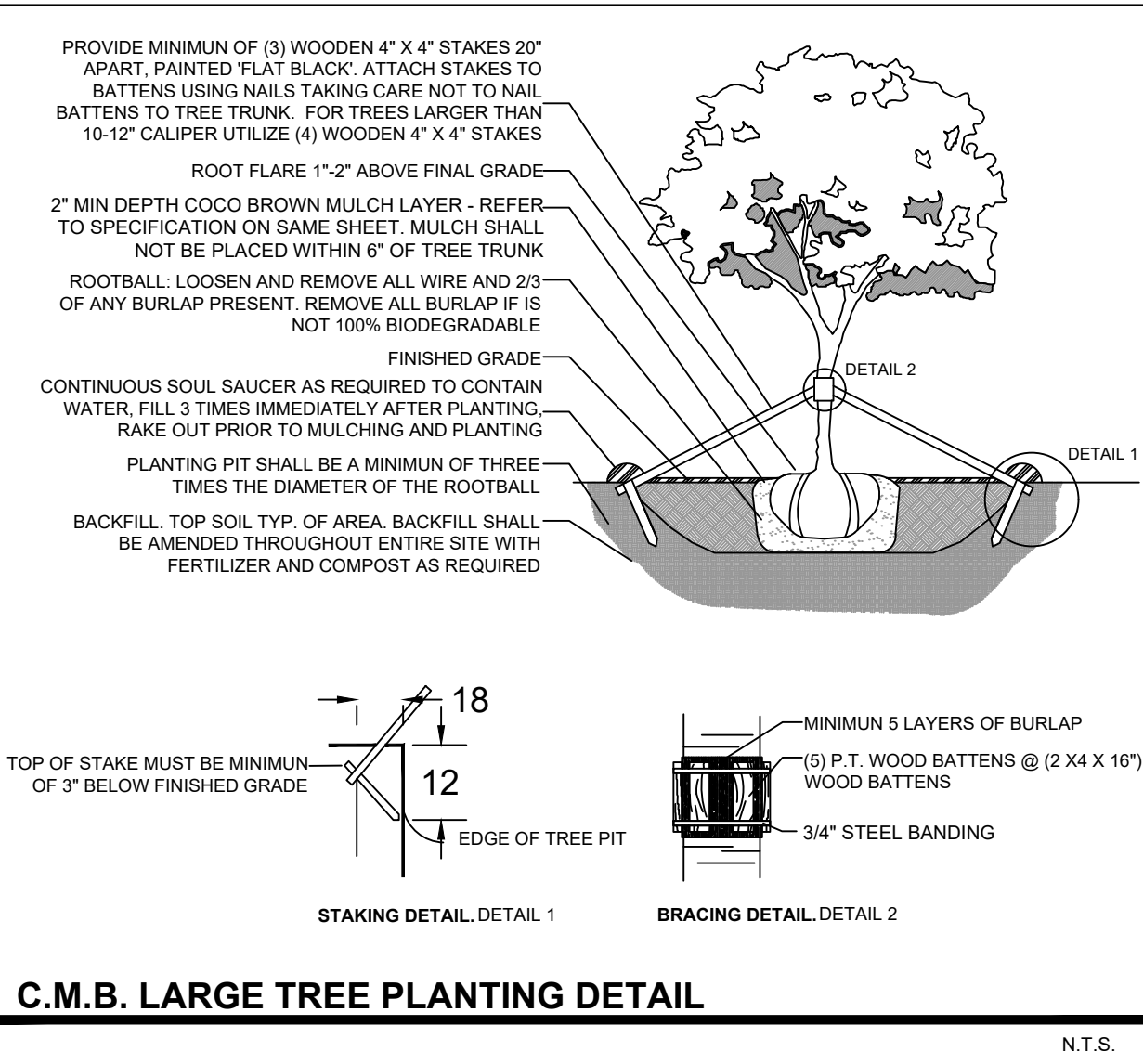
ZONING: RS3	LOT SIZE: 28,250 SF	ACRES: .25
MINIMUM STANDARDS	REQUIRED	PROVIDED
TREES		
FRONT YARD - 2 TREES PER LOT BACK YARD - 3 TREES PER LOT TOTAL OF 5 TREES REQUIRED FOR LOTS UP TO 6,000 SF. 1 ADDITIONAL TREE IS REQUIRED FOR EACH ADDITIONAL 1,000 SF OF LOT AREA. MIN 30% OF REQUIRED TREES SHALL BE NATIVE SPECIES MIN 50% OF REQUIRED TREES SHALL BE LOW MAINTENANCE AND DROUGHT TOLERANT SPECIES DIVERSITY OF 21 - 30 TOTAL TREES REQUIRED : 6 TREE SPECIES	FRONT YARD - 2 TREES PER LOT BACK YARD - 3 TREES PER LOT TOTAL LOT AREA: 28,250 SF - 6,000 SF 5 TREES REQ + (22,250 SF / 1,000) = 28TREES REQ 30% x 28 = 9 TREES OF NATIVE SPECIES 50% x 28 = 14 TREES OF LOW MAINTENANCE AND DROUGHT TOLERANT SPECIES 6 TREE SPECIES	FRONT YARD - 2 TREES PROVIDED BACK YARD - 3 TREES PROVIDED 28 TOTAL TREES PROVIDED 9 TOTAL NATIVE TREES PROVIDED 22 TOTAL LOW MAINTENANCE TREES PROVIDED 8 TREE SPECIES PROVIDED
STREET TREES		
AVERAGE STREET TREE SPACING 20' ON CENTER	150 LINEAR FEET / 20 = 8 STREET TREES REQ	9 STREET TREES PROVIDED
SHRUBS		
12 SHRUBS PER THE NUMBER OF REQUIRED LOT AND STREET TREES MIN 50% OF REQUIRED SHRUBS SHALL BE NATIVE SPECIES MIN 10% OF REQUIRED SHRUBS SHALL BE LARGE SHRUBS OR SMALL TREES MIN 50% OF REQUIRED LARGE SHRUBS SHALL BE NATIVE SPECIES	12 x (TOTAL LOT + STREET TREES) = 432 TOTAL SHRUBS REQUIRED 50% x 432 = 216 SHRUBS OF NATIVE SPECIES REQ 10% x 432 = 43 TOTAL LARGE SHRUBS REQ 50% x 43 = 13 LARGE SHRUBS OF NATIVE SPECIES REQ	435 TOTAL SHRUBS PROVIDED 435 TOTAL NATIVE SHRUBS PROVIDED 320 TOTAL LARGE SHRUBS PROVIDED 320 TOTAL NATIVE LARGE SHRUBS
LAWN		
LAWN SHALL BE MAXIMUM OF 50 % OF REQUIRED LANDSCAPE AREA	LAWN AREAS ARE LESS THAN 50% OF LANDSCAPE AREA	
IRRIGATION SYSTEM		
LANDSCAPE SHALL BE WATERED BY A PERMANENT IRRIGATION SYSTEM		100% IRRIGATION COVERAGE PROVIDED

PLANT LIST - 225 NORTH HIBISCUS DRIVE

KEY	QTY.	NATIVE	COMMON NAME	BOTANICAL NAME	HEIGHT, SPECIFICATION, & NOTES
TREES					
BA	2	YES	VERAWOOD TREE	Bulnesia arborea	18' ht min, 10' spread min, 6" dbh, standard trunk
BS	3	YES	GUMBO LIMBO TREE	Bursera simaruba	Specimen, 20' - 30' ht, 10' spread min, 12" dbh, standard trunk
CB	4	NO	BRAZILIAN BEAUTYLEAF TREE	Calophyllum brasiliense	16' ht min, 8' spread min, 4" dbh, standard trunk
CU	1	YES	SEAGRAPE TREE	Coccoloba uvifera	Specimen, 16' ht min, 8' spread min, 4" dbh, standard trunk
LL	3	YES	WILD TAMARIND	Lysiloma latisiliquum	20' ht min, 10' spread min, 8" dbh
LJ	2	NO	JAPANESE PRIVET TREE	Ligustrum japonicum	16' ht min, 8' spread min, 4" dbh
MF	9	YES	SIMPSON STOPPER TREE	Myrcianthes fragrans	14' ht min, 6' spread min, 4" dbh, standard trunk
PR	13	NO	BAYRUM	Pimenta racemosa	12' ht min, 6' spread min, 2" dbh, standard trunk
PALMS + BAMBOO					
CN	5	NO	COCONUT PALM	Cocos nucifera 'Maypan'	8' gray wood, Florida Fancy, staggered heights
CN2	1	NO	COCONUT PALM	Cocos nucifera 'Maypan'	12' gray wood min, leaning, Florida Fancy,
DC	3	NO	CABADA PALM	Dypsis cabadae	8' - 9' height, clump, multi trunk, florida fancy
PE	2	NO	ALEXANDER PALM	Ptychosperma elegans	Specimens to be selected, Florida Fancy, double + triple trunk
SL	2	NO	SATAKENTIA PALM	Satakentia ilukiensis	8' height,Clear trunk, Florida Fancy
SHRUBS					
EUF	320	YES	SPANISH STOPPER SHRUB	Eugenia feotida	15 gallon, 5' height, 2' spread, 30" on center
PSL	180	YES	DWARF BAHAMA COFFEE SHRUB	Psychotria ligustrifolia	7 gallon, 3' height, 24" on center
GROUNDCOVERS					
ALO	AS REQ	NO	ELEPHANT EAR	Alocasia	7 gallon, 12" on center, full
ALP	AS REQ	NO	RED GINGER	Alpinia purpurata	7 gallon, 14" on center, full, low branch
CAM	660	NO	CARISSA	Carissa macrocarpa	3 gallon, 18" on center, full
ERL	300	YES	GOLDEN BEACH CREEPER	Ermodea littoralis	1 gallon, 12" on center, full
IPP	165	YES	RAILROAD VINE	Ipomoea pes-caprae	1 gallon, 12" on center, full
LIR	192	NO	LILYTURF	Liriope muscari	3 gallon, 12" on center, full
MIC	600	NO	WART FERN	Microsorium scolopendrium	1 gallon, 12" on center, full
MOD	55	NO	SWISS CHEESE PLANT	Monstera deliciosa	7 gallon, 24" on center, full
PBM	197	NO	PHILODENDRON 'BURL MARX'	Same	3 gallon, 18" on center, full
PEO	115	NO	BABY RUBBER PLANT	Peperomia obtusifolia	1 gallon, 12" on center, full
PHW	AS REQ	NO	PHILODENDRON 'WILSONII'	Same	7 gallon, 18" on center, full
SER	10	YES	SILVER SAW PALMETTTO	Serenoa repens 'Cinerea'	7 gallon, 18" on center, full
TRF	110	YES	DWARF FAKAHATCHEE	Tripsacum floridana	3 gallon, 18" on center, full
SOD, AGGREGATE & MULCH					
SOD	+/- 12,457 SF	NATIVE SEA SHORE PASPALUM LAWN - OVER 2" TOPSOIL BED, SEE PLANTING SPECS			
DGA	+/- 600 SF	3/8" DECOMPOSED GRANITE AGGREGATE OR STONE TO BE SELECTED, INSTALLED OVER FILTER FABRIC AND WEED BARRIER MATERIAL / OLIMAR, 2" MIN. DEPTH			
TURF	+/- 700 SF	ARTIFICIAL TURF			
MLC	AMERIGROW 'PREMIUM PINEBARK BROWN' SHREDDDED MULCH				

LANDSCAPE NOTES

- ALL PLANT MATERIAL SHALL BE FLORIDA GRADE NO. 1 OR BETTER.
- CONTRACTOR SHALL BECOME FAMILIAR WITH THE LOCATION OF, AVOID, AND PROTECT ALL UTILITY LINES, BURIED CABLES, AND OTHER UTILITIES.
- TREE, PALM, ACCENT AND BED LINES ARE TO BE LOCATED IN THE FIELD AND APPROVED BY THE LANDSCAPE ARCHITECT PRIOR TO INSTALLATION.
- ALL PLANTING SOIL SHALL BE 50:50 TOPSOIL:SAND MIX, FREE OF CLAY, STONES, ROCKS, OR OTHER FOREIGN MATTER. THIS SPECIFICATION INCLUDES ALL BACKFILL FOR BERMS AND OTHER LANDSCAPE AREAS.
CARE SHALL BE TAKEN TO AVOID PLACEMENT OF CONSTRUCTION FILL, GRAVEL, AND OR DEBRIS OVER THE ROOTBALLS OF INSTALLED OR EXISTING TREES AND OR PALMS ON SITE.
GROUNDCOVER PLANTING BEDS:
6" DEPTH PLANTING SOIL SPREAD IN PLACE- THROUGHOUT.
SHRUB AND HEDGE PLANTING AREAS:
12" DEPTH PLANTING SOIL SPREAD IN PLACE- THROUGHOUT.
TREES, PALMS, SPECIMEN PLANT MATERIAL LOCATIONS:
REMOVE ALL LIMEROCK PRESENT TO A DEPTH OF AT LEAST 30"BEFORE PLACING NEW PLANTING SOIL. APPLY NEW CLEAN PLANTING SOIL IN PLANTING AREA AS REQUIRED.
- THE SITE CONTRACTOR SHALL BE RESPONSIBLE TO BRING ALL GRADES TO WITHIN 2" OF FINAL GRADES. THIS SHALL INCLUDE A 2" APPLICATION OF 50:50 TOPSOIL:SAND MIX FOR ALL LANDSCAPE AND AREAS TO BE SODDED.
- THE LANDSCAPE CONTRACTOR SHALL CALCULATE AND SUBMIT AN ITEMIZED PRICE FOR THE 2" APPLICATION OF 50:50 MIX FOR ALL SOD AREAS AS A REFERENCE IN THE CASE THAT THERE WOULD BE A DISCREPANCY BETWEEN SITE AND LANDSCAPE CONTRACTORS AND NOTIFY THE SITE CONTRACTOR OR PROJECT SUPERINTENDENT AS TO THIS DISCREPANCY. IT WILL THEN BE DETERMINED WHICH PARTY WILL PROVIDE THIS 2" TOPSOIL:SAND APPLICATION AND SUBSEQUENT PAYMENT.OTHER PLANTING SOIL MIXES TO BE ADDED, I.E. FOR TREES, PALMS, SPECIMEN PLANTS, SHRUBS AND GROUNDCOVERS SHALL BE THE RESPONSIBILITY OF THE LANDSCAPE CONTRACTOR AND BE INCLUSIVE WITH THE LANDSCAPE BID.
- ALL EXISTING TREE + PALM INFORMATION THAT HAS BEEN PROVIDED ON THIS PLAN FOLLOWS THE CITY OF MIAMI BEACH TREE PERMITTING GUIDELINES. ANY TREES or PALMS CONSIDERED INVASIVE OR THAT FALLS UNDER THE TREE PERMIT EXEMPTION / PROHIBITED SPECIES LIST 24-94 (4) MAY NOT BE SHOWN FOR CLARITY PURPOSES. ANY DISCREPANCIES IF NOTED UPON FURTHER FIELD INSPECTION SHALL BE BROUGHT TO THE IMMEDIATE ATTENTION OF THE LANDSCAPE ARCHITECT.
- IRRIGATION SHALL PROVIDE FOR A 100% COVERAGE WITH 50% OVERLAP MINIMUM AND BE PROVIDED BY A FULLY AUTOMATIC IRRIGATION SYSTEM W/ RAIN MOISTURE SENSOR ATTACHED TO CONTROLLER. ALL FLORIDA BUILDING CODE APPENDIX 17" IRRIGATION REQUIREMENTS SHALL BE STRICTLY ADHERED TO FOR INSTALLATION AND PREVAILING WATER MANAGEMENT DISTRICT RESTRICTIONS AND REGULATIONS SHALL BE IN COMPLIANCE FOR POST-INSTALLATION WATERING SCHEDULES.CONTRACTOR SHALL COORDINATE WITH THE IRRIGATION CONTRACTOR AND LEAVE PROVISIONS FOR ALL SLEEVING AND PIPE ROUTING. ALL UNDERGROUND UTILITIES TO BE LOCATED BY DIALING 811 AS REQUIRED BY LAW.
- ALL PLANTING BEDS SHALL BE MULCHED TO A DEPTH OF 2" WITH APPROVED NATURAL SHREDDDED COCO BROWN MULCH FREE FROM WEEDS AND PESTS. NO 'NUGGETS', 'CYPRESS MULCH' OR 'RED DYED MULCH' TO BE ACCEPTED. KEEP MULCH 6" AWAY FROM TREE OR PALM TRUNKS AS PER INDUSTRY RECOMMENDATIONS.
- ALL TREES, PALMS, SHRUBS AND GROUNDCOVERS, AND SOD / LAWN SHALL CARRY A ONE-YEAR WARRANTY FROM THE DATE OF FINAL ACCEPTANCE.
- NURSERY SUPPORT POLES SHALL BE REMOVED AT THE NURSERY, PRIOR TO TO DELIVERY, AND TREES DELIVERED WITH NURSERY POLES WILL NOT BE ACCEPTED; AND THEREFORE REJECTED, W/ THE EXCEPTION TREE SPECIES: CLUSIA ROSEA + SILVER BUTTWOOD TREES
- ALL TREES AND PALMS SHALL BE STAKED PER ACCEPTED STANDARDS BY THE FLORIDA NURSERYMEN & GROWERS LANDSCAPE ASSOCIATION (FNGLA) AND ANSI A-309 (PART 6)-2013 TREE, SHRUB, AND OTHER WOODY PLANT MANAGEMENT STANDARD PRACTICES (PLANTING AND TRANSPLANTING). CONTRACTOR SHALL ENSURE THAT THE PLANS, DETAILS, SPECIFICATIONS AND NOTES HAVE BEEN ADHERED TO AND THAT THE LANDSCAPE AND IRRIGATION INSTALLATION IS COMPLIANT TO ALL ITEMS AS DIRECTED ON THE PLANS PRIOR TO SCHEDULING OF THE FINAL INSPECTION.**
CONTRACTOR SHALL REMOVE ALL BRACING MATERIALS FROM ALL PALMS, TREES WITHIN 1 YEAR OF INSTALLATION.
- THE PLANT LIST IS INTENDED ONLY AS AN AID TO BIDDING. ANY DISCREPANCIES FOUND BETWEEN THE QUANTITIES ON THE PLAN AND PLANT LIST, THE QUANTITIES ON THE PLAN SHALL BE HELD VALID.
- IF NECESSARY, CONTRACTOR SHALL PROVIDE A WATER TRUCK DURING PLANTING TO ENSURE PROPER WATERING-IN DURING INSTALLATION AND CONTRACTOR WILL BE RESPONSIBLE FOR CONTINUAL WATERING UNTIL FINAL ACCEPTANCE BY THE OWNER.
A MINIMUM OF 6 MONTHS OF SUPPLEMENTAL HAND OR AUTOMATIC IRRIGATION SYSTEM WATERING SHALL BE REQUIRED TO AID IN NEW TREE OR PALM ESTABLISHMENT.
- FERTILIZATION: ONE COMPLETE APPLICATION OF GRANULAR FERTILIZER SHALL BE APPLIED PRIOR TO FINAL ACCEPTANCE AND APPROVAL BY THE LANDSCAPE ARCHITECT. FERTILIZER SHALL BE SCOTTS AGRIFORM 20-10-5 PLANTING TABS OR APPROVED EQUAL AS RECOMMENDED BY LANDSCAPE CONTRACTOR.
- SHOULD ANY TREES OR PALMS BE DAMAGED THEY SHALL BE EVALUATED BY THE CITY URBAN FORESTER TO DETERMINE CORRECTIVE ACTIONS THAT MAY INCLUDE REMOVAL, CORRECTIVE PRUNING AND OR REPLACEMENT. ANY CORRECTIVE ACTION REQUIRED SHALL BE PERFORMED IN ACCORDANCE WITH A CITY OF MIAMI BEACH CODE, ANSI A 309 PRUNING STANDARDS AND OR AN ISSUED ERM TREE PERMIT OR ENVIRONMENTAL PERMIT. ANY CORRECTIVE PRUNING REQUIRED SHALL BE PERFORMED BY AN ISA CERTIFIED ARBORIST OR ASCA CONSULTING ARBORIST AND THE CITY URBAN FORESTER SHALL BE CONSULTED.**
- ALL TREES + PALMS TO REMAIN OR BE RELOCATED ON SITE IN THE VICINITY OF CONSTRUCTION ACTIVITIES, SHALL BE PROTECTED THROUGH THE USE OF TREE PROTECTION BARRICADES INSTALLED AT THE TREE OR PALM DRIP LINE. A TREE PROTECTION FENCE SHALL BE CONSTRUCTED PRIOR TO ANY CONSTRUCTION ACTIVITY INCLUDING GRUBBING AND SHALL REMAIN IN PLACE UNTIL ON SITE CONSTRUCTION HAS BEEN COMPLETED.**
- MULCH SHALL NOT BE APPLIED WITHIN 6" OF ANY TREE OR PALM TRUNK THAT IS INSTALLED OR INCORPORATED INTO THE PROJECT. FOR ROW TREES + PALMS, ALL MULCH SHALL BE AMERIGROW 'PREMIUM PINEBARK BROWN' SHREDDDED MULCH OR A CITY APPROVED ALTERNATIVE.**



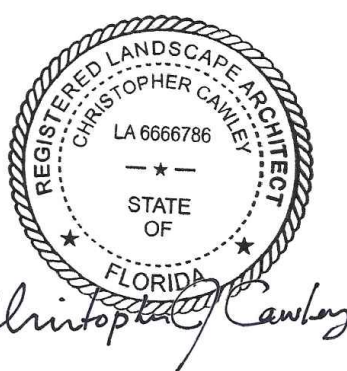
CHRISTOPHER
CAWLEY
LANDSCAPE
ARCHITECTURE

780 NE 69TH STREET
SUITE 200 MIAMI, FL 33138
O 786.536.2961 C 305.979.1585
CHRISTOPHERCAWLEY.COM
Florida Landscape Architecture
Business LLC 26000460

REVISION SCHEDULE:

PROJECT INFO:

NEW RESIDENCE
225 NORTH HIBISCUS DRIVE
MIAMI BEACH, FL 33139



CHRISTOPHER CAWLEY, RLA
Florida License LA 6666786

DATE:

AUGUST 08, 2022

SHEET NO:

PLANT LIST, LANDCAPE CODE + DETAILS

L3.0