

IN-SITE DESIGN GROUP LLC
ARCHITECTURAL SERVICES

1546 Jackson Street
Hollywood, Florida 33020

AA26001758

WWW.INSITEDESIGNGROUP.COM

ANNIE K. CARRUTHERS
ARCHITECT AR-97156

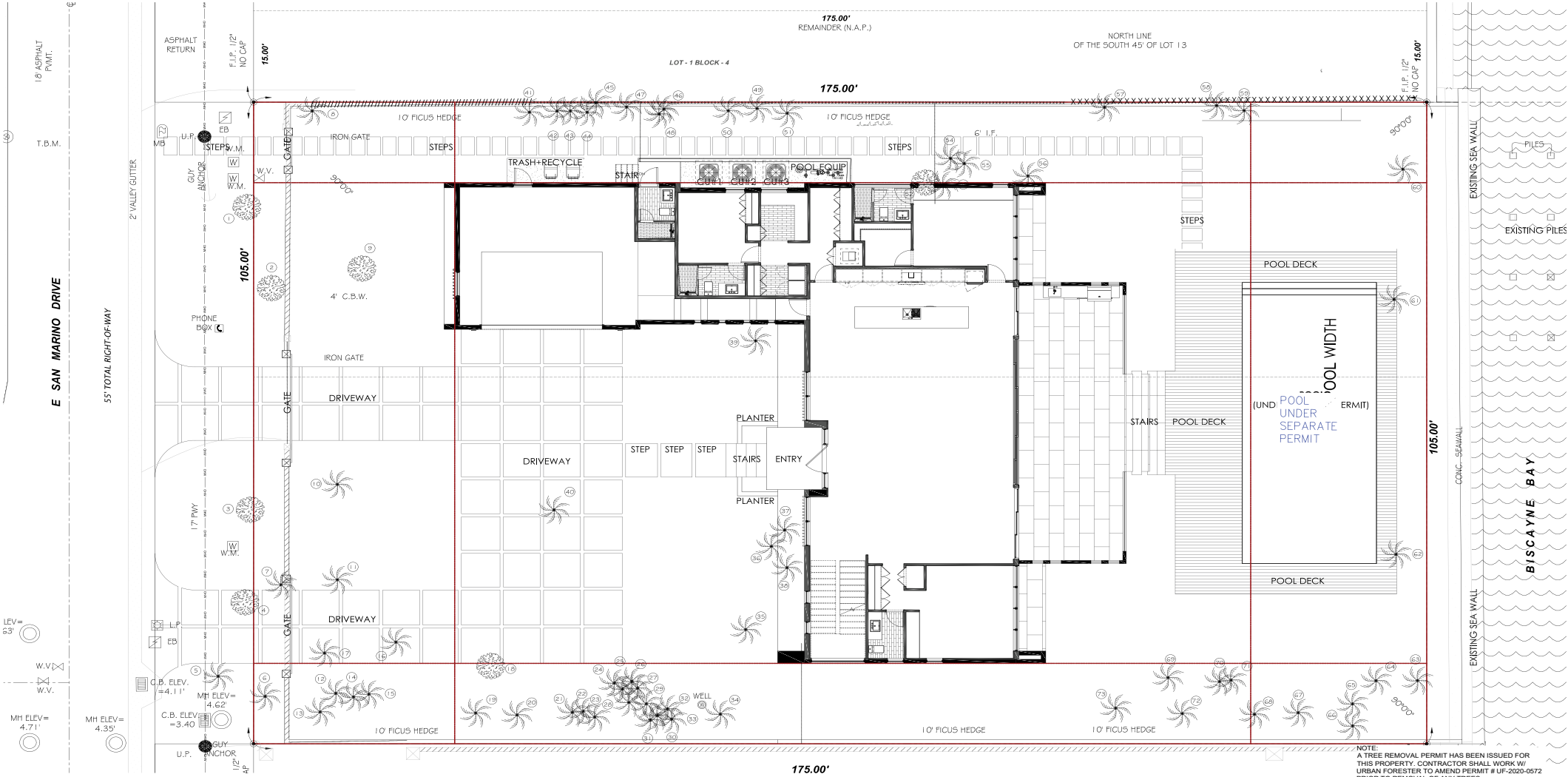
DRB 22-0822
PROJECT:

AZENDA RESIDENCE
205 East San Marino
Drive, Miami Beach, FL
33139-1105

**EXISTING
LANDSCAPE
PLAN**

ITEM NUMBER:

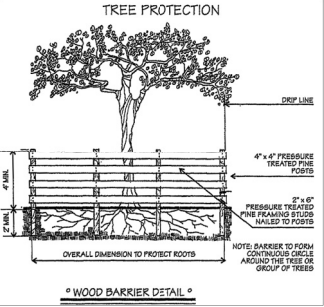
13-A



| TREE TABLE | | | | | |
|------------|------------------|-----------------|---------------|---------------|-------------|
| No. | Name | Diameter (P.I.) | Height (P.I.) | Spread (P.I.) | Disposition |
| 1 | LEGASTROM | 1.00 | 6 | 6 | Remove |
| 2 | LEGASTROM | 0.50 | 6 | 6 | Remove |
| 3 | LEGASTROM | 1.00 | 6 | 6 | Remove |
| 4 | LEGASTROM | 1.00 | 6 | 6 | Remove |
| 5 | ROBBLIN PALM (2) | 0.40 | 15 | 6 | Remove |
| 6 | ROYAL PALM | 1.60 | 40 | 20 | Remove |
| 7 | ALEXANDER PALM | 0.30 | 15 | 6 | Remove |
| 8 | ROYAL PALM | 1.40 | 50 | 20 | Remove |
| 9 | MANGO TREE | 4.00 | 40 | 40 | Remove |
| 10 | ROYAL PALM | 1.40 | 40 | 20 | Remove |
| 11 | ROYAL PALM | 1.40 | 40 | 20 | Remove |
| 12 | ALEXANDER PALM | 0.25 | 25 | 6 | Remove |
| 13 | ALEXANDER PALM | 0.25 | 20 | 6 | Remove |
| 14 | SABAL PALM | 1.00 | 20 | 12 | Remove |
| 15 | SABAL PALM (2) | 0.80 | 30 | 15 | Remove |
| 16 | ROBBLIN PALM (2) | 0.30 | 10 | 6 | Remove |
| 17 | ROBBLIN PALM (2) | 0.30 | 10 | 6 | Remove |
| 18 | MANGO TREE | 1.00 | 25 | 20 | Remove |
| 19 | ALEXANDER PALM | 0.70 | 30 | 10 | Remove |
| 20 | ALEXANDER PALM | 0.70 | 30 | 10 | Remove |
| 21 | TRAVELERS PALM | 0.80 | 30 | 12 | Remove |
| 22 | TRAVELERS PALM | 0.80 | 30 | 12 | Remove |
| 23 | TRAVELERS PALM | 0.80 | 30 | 12 | Remove |
| 24 | TRAVELERS PALM | 0.80 | 30 | 15 | Remove |
| 25 | TRAVELERS PALM | 0.80 | 30 | 15 | Remove |

| TREE TABLE | | | | | |
|------------|--------------------|-----------------|---------------|---------------|-------------|
| No. | Name | Diameter (P.I.) | Height (P.I.) | Spread (P.I.) | Disposition |
| 26 | TRAVELERS PALM | 0.80 | 25 | 12 | Remove |
| 27 | TRAVELERS PALM | 0.80 | 30 | 15 | Remove |
| 28 | TRAVELERS PALM | 0.80 | 25 | 12 | Remove |
| 29 | TRAVELERS PALM | 0.80 | 30 | 15 | Remove |
| 30 | TRAVELERS PALM | 0.80 | 30 | 15 | Remove |
| 31 | TRAVELERS PALM | 0.80 | 30 | 15 | Remove |
| 32 | TRAVELERS PALM | 0.80 | 30 | 15 | Remove |
| 33 | TRAVELERS PALM | 0.80 | 30 | 15 | Remove |
| 34 | ALEXANDER PALM | 0.60 | 30 | 12 | Remove |
| 35 | ARECA PALM | 3.00 | 20 | 15 | Remove |
| 36 | ALEXANDER PALM | 0.60 | 30 | 15 | Remove |
| 37 | TRAVELERS PALM (5) | 0.40 | 25 | 6 | Remove |
| 38 | TRAVELERS PALM (3) | 0.40 | 20 | 10 | Remove |
| 39 | ALEXANDER PALM (6) | 0.20 | 25 | 6 | Remove |
| 40 | PALMS (8) | 0.50 | 30 | 10 | Remove |
| 41 | ROYAL PALM | 1.00 | 25 | 12 | Remove |
| 42 | ROYAL PALM | 0.60 | 20 | 12 | Remove |
| 43 | ROYAL PALM | 0.60 | 20 | 15 | Remove |
| 44 | ROYAL PALM | 1.00 | 25 | 18 | Remove |
| 45 | ROYAL PALM | 1.60 | 50 | 15 | Remove |
| 46 | ROYAL PALM | 1.00 | 25 | 15 | Remove |
| 47 | ROYAL PALM | 0.50 | 20 | 15 | Remove |
| 48 | ROYAL PALM | 0.50 | 20 | 12 | Remove |
| 49 | ROYAL PALM | 0.50 | 20 | 15 | Remove |
| 50 | ROYAL PALM | 0.60 | 20 | 15 | Remove |

| TREE TABLE | | | | | |
|------------|------------------|-----------------|---------------|---------------|-------------|
| No. | Name | Diameter (P.I.) | Height (P.I.) | Spread (P.I.) | Disposition |
| 51 | ROYAL PALM | 0.80 | 25 | 15 | Remove |
| 52 | DRACENA | 0.80 | 20 | 12 | Remove |
| 53 | ALEXANDER PALM | 0.40 | 30 | 10 | Remove |
| 54 | ALEXANDER PALM | 0.50 | 30 | 10 | Remove |
| 55 | ALEXANDER PALM | 0.50 | 30 | 10 | Remove |
| 56 | ROBBLIN PALM (8) | 0.30 | 15 | 6 | Remove |
| 57 | ALEXANDER PALM | 0.50 | 30 | 10 | Remove |
| 58 | ALEXANDER PALM | 0.40 | 15 | 6 | Remove |
| 59 | ALEXANDER PALM | 0.40 | 15 | 6 | Remove |
| 60 | ROYAL PALM | 1.40 | 30 | 20 | Remove |
| 61 | ROYAL PALM | 1.40 | 30 | 20 | Remove |
| 62 | ROYAL PALM | 1.40 | 30 | 20 | Remove |
| 63 | COCONUT PALM | 0.70 | 30 | 15 | Remove |
| 64 | COCONUT PALM | 0.70 | 30 | 15 | Remove |
| 65 | COCONUT PALM | 0.70 | 30 | 15 | Remove |
| 66 | COCONUT PALM | 0.70 | 35 | 15 | Remove |
| 67 | ALEXANDER PALM | 0.50 | 35 | 15 | Remove |
| 68 | ALEXANDER PALM | 0.50 | 35 | 15 | Remove |
| 69 | ALEXANDER PALM | 0.50 | 35 | 15 | Remove |
| 70 | ALEXANDER PALM | 0.70 | 35 | 15 | Remove |
| 71 | ALEXANDER PALM | 0.70 | 35 | 15 | Remove |
| 72 | ALEXANDER PALM | 0.50 | 35 | 15 | Remove |
| 73 | ALEXANDER PALM | 0.50 | 35 | 15 | Remove |



LANDSCAPE ARCHITECT
KIM MOYER, A.S.L.A. - LA0000952



TREE DISPOSITION PLAN

SCALE : 1/8" = 1' - 0"

0 4 8 16
Scale: 1/8" = 1'-0"

General Notes:

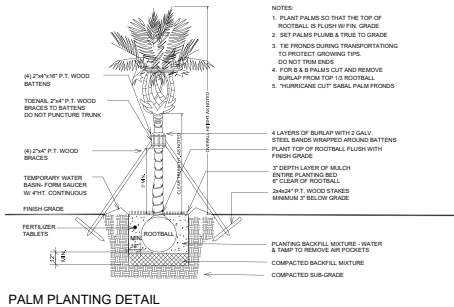
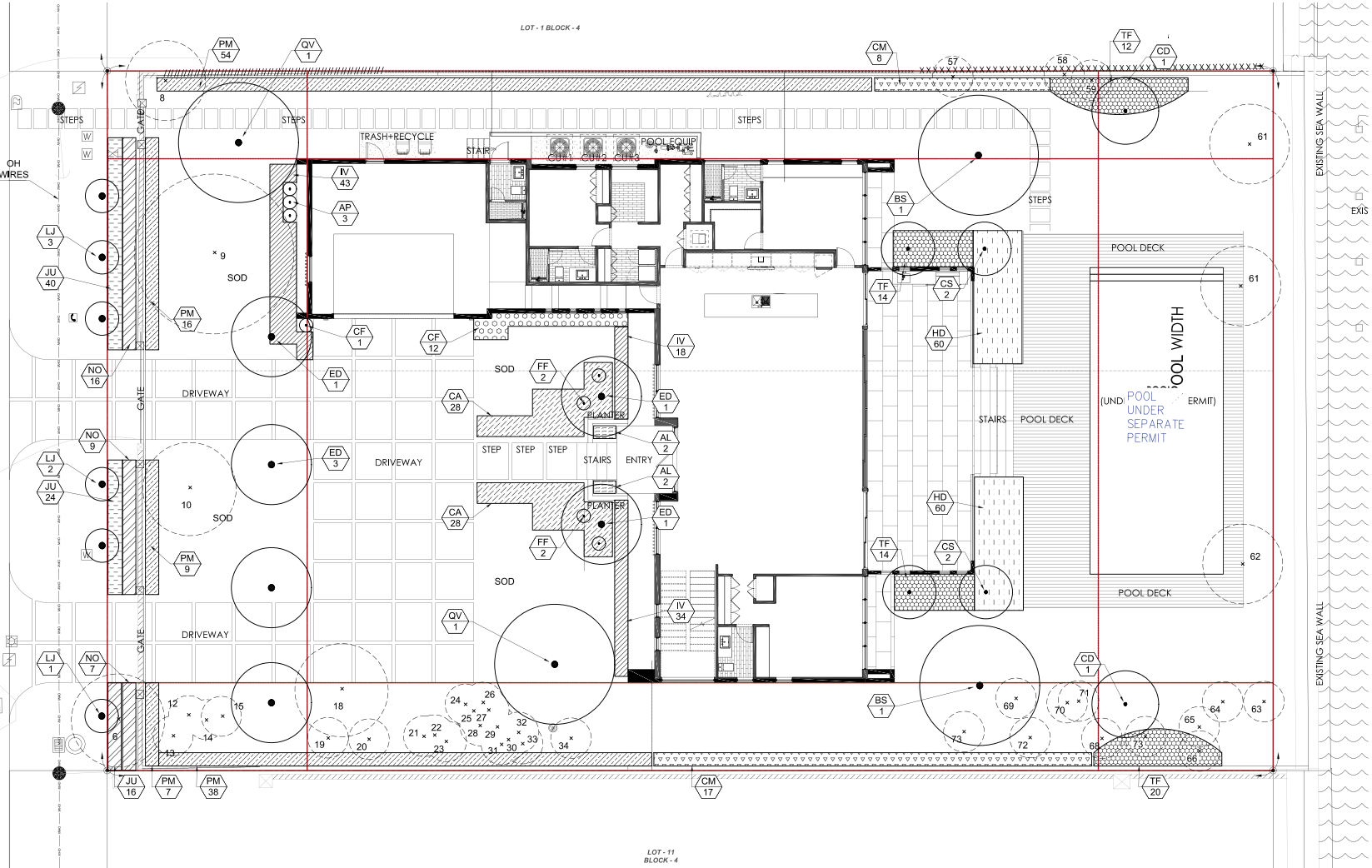
- All plant material shall be Florida No. 1 or better as given in the current Florida Grades and Standards for Nursery Plants, 2015. Florida Department of Agriculture and Consumer Services.
- All plant materials shall be subject to inspection and approval by the Landscape Architect at place of growth and upon delivery for conformity to specification.
- All plants shall be true to species and variety and shall conform to measurements specified. All substitutions shall be submitted to the City and Landscape Architect for final approval.
- All plants shall be exceptionally heavy, symmetrical, light knit and so trained in appearance as to be superior to form, branching and symmetry.
- Contractor shall notify Sunshine 811 (call 811) for locations of existing utility lines 48 hours prior to beginning work. Contractor shall verify location of all utility lines and easements prior to commencing any work. Excavation in the vicinity of underground utilities shall be undertaken with care and by hand. If necessary, the Contractor shall be responsible for this work and disrepair or damage to utilities shall be repaired immediately at no expense to Owner.
- Grade 5% screened sterilized Melaleuca or Eucalyptus mulch shall be used in all mass planting beds and for individual tree pits. All trees shall have a mulch ring with a depth of 3" and a diameter of 3'-4" around their base. All mulch shall be kept 4" from base of all plant material. Mulch beds shall be a minimum of 12" wider than plants measured from outside edge of foliage.
- Sod shall be St Augustine and free of weeds, insects, fungus and disease, laid with alternating and shuffling joints.
- All trees and shrubs shall be backfilled with a suitable planting soil consisting of 50 percent sand and 50 percent approved compost. All plant materials shall be planted with a minimum of 6 to 18 inches of planting soil around the root ball. Refer to planting details. Planting soil to be backfilled into plant pits by washing in. Planting beds shall be free from road, pea, egg or colored rock, building materials, debris, weeds, noxious pests and disease.
- All sodded areas to have a minimum of 2" of planting soil as described in note #8.
- All trees shall be warranted by the Contractor and will be healthy and in flourishing condition of active growth one year from date of final acceptance.
- All shrubs, groundcovers, vines and sod shall be fully warranted for 90 days under same condition as above.
- All synthetic burlap, synthetic string or cords or wire baskets shall be removed before any trees are planted. All synthetic tape shall be removed from trunks, branches, etc before inspection. The top 1/3 of any natural burlap shall be removed or tucked into the planting hole before trees are backfilled. Planting soil to be backfilled into pits by washing in.
- All trees and palms shall be planted with the top of their rootballs 1" 2" above finished grade. All other plants shall be planted with top of their rootballs no deeper than the first grade surrounding the planting area.
- In areas where paved surfaces abut sod or mulch, the final level of both surfaces should be even.
- All planting shall be installed with fertilizer at time of planting.
- All planting shall be installed in a sound, workmanlike manner and according to good planting procedures. Installation shall include watering, weeding, fertilizing, mulching, selective pruning and removal of refuse and debris on a regular basis so as to present a neat and well kept appearance at all times.
- All landscape and sod areas shall have an automatic irrigation system installed. Coverage should be 100% with 50% minimum overlap using half tree water to all landscape and sod areas. Spray upon public sidewalks, streets and adjacent properties should be minimized. Sodded areas and shrub/groundcover beds should be on separate irrigation zones for a more efficient system. Irrigation system shall be installed with a rainwatch device.
- All landscape and irrigation shall be installed in compliance with all local codes.
- The plan shall take precedence over the plant list, should there be any discrepancy between the two.

Landscape Legend

| | | | |
|--|---------|------------|--|
| ZONING DISTRICT: RS-3 | | | |
| NET LOT AREA: 18,375 sf (.42 AC) | | | |
| OPEN SPACE | | | |
| A. Square feet of open space required, as indicated on site plan: Net lot area = 18,375sf x .25%= | 4594 sf | 8854.74 sf | |
| B. Square feet of parking lot open space required as indicated on site plan: Number of parking spaces 0 x 10 sf per parking space = | 0 | 0 | |
| C. Total square feet of landscaped open space required : A+E= | 4594 sf | 8854.74 sf | |
| TREES | | | |
| A. Number of trees required per net lot acre less existing number of trees meeting minimum requirements = 5 + 1 tree/ 1000 sf = | 18 | 18 | |
| B. Percentage of native trees required 18 x .30 = | 6 | 10 | |
| C. Percentage drought tolerant and low maintenance: 18 x .50 | 9 | 10 | |
| STREET TREES | | | |
| D. Street trees (maximum average spacing of 20' O.C.) 105/ 20 | 6 | 6 | |
| Street trees located directly beneath power lines (maximum average spacing of 20' O.C.) | 6 | 6 | |
| SHRUBS | | | |
| A. Number of shrubs required: Number of trees required 24 x 12 = | 288 | 587 | |
| B. Percentage of native shrubs required: 288 x .50 | 144 | 275 | |
| C. Percentage of large shrubs or small trees required: 288 x .10 = | 29 | 29 | |
| IRRIGATION: Automatic | | | |

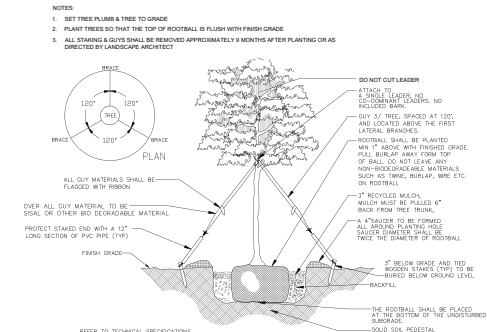
Plant List

| Trees/ Palms | | | | | |
|---------------------|-----|--|------------------------------|--------|-------------------|
| Sym | Qty | Botanical / Common Name | Size | Native | Drought Tolerance |
| CD | 2 | Coccoloba diversifolia / Pigeon Plum | 12' Ht. x 4' Spr., 2" cal. | Yes | High |
| ED | 6 | Elaeocarpus decipiens/ Japanese Bluberry | 12' Ht x 4' Spr, 2" cal | No | Medium |
| QV | 2 | Quercus virginiana/ Live Oak | 12' Ht. x 6' Spr., 2" cal. | Yes | High |
| BS | 2 | Bursera imarubra/ Gumbo Limbo | 12' Ht x 6' Spr, 2" cal | Yes | High |
| CS | 4 | Cordia sebestena/ Orange Geiger Tree | 10' Ht x 5' Spr, 1.5" cal | Yes | High |
| LJ | 6 | Ligustrum japonicum/ Wax Privet | 10' Ht x 5' Spr, multi trunk | No | High |
| Shrubs/Groundcovers | | | | | |
| CM | 25 | Carvota pinn/ Fichtail Palm | 6' x 4' | No | High |
| AP | 3 | Alocasia 'Portora/ Giant Elephant Ear | 36" Ht | No | Low |
| AL | 4 | Alocasia 'California/ California Alocasia | 24" x 24", 24" O.C. | No | Low |
| CF | 13 | Clusia flava/ Small Leaf Clusia | 24" x 24", 24" O.C. | No | High |
| HD | 120 | Helianthus debilis/ Beach Sunflower | 5" x 10", 18" O.C. | Yes | High |
| IV | 95 | Ilex vomitoria 'Stokes Dwarf/ Dwarf Ilex | 10" x 10", 18" O.C. | Yes | High |
| TF | 60 | Tripsacum floridana/ Florida Gamma Grass | 16" x 16", 24" O.C. | Yes | High |
| NO | 32 | Nerium oleander 'Petite Pink/ Dwarf Pink Oleander | 20" x 20", 24" O.C. | No | High |
| FF | 4 | Furcraea foetida/ Giant False Agave | 24" x 24" | No | High |
| JU | 80 | Juniperus conferta/ Shore Juniper | 6" x 12", 18" O.C. | No | High |
| PM | 124 | Podocarpus macrophyllus / Podocarpus | 24" x 24", 24" O.C. | No | Medium |
| CA | 56 | Carissa macrocarpa 'Emerald Blanket/ Dwarf Carissa | 24" x 24", 24" O.C. | No | Medium |
| Sod | | St. Augustine | | | |
| Mulch | | Shredded Melaleuca or Eucalyptus | | | |

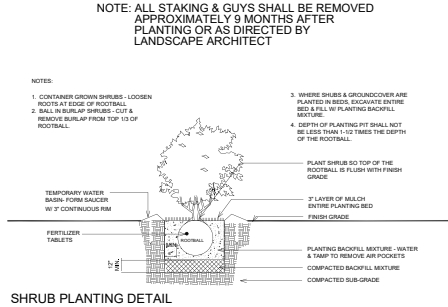


PALM PLANTING DETAIL

NOTE: NO WELLINGTON TAPE OR OTHER NON-BIODEGRADABLE MATERIALS SHALL COME INTO CONTACT WITH THE TREE.



TREE STAKING DETAIL



SHRUB PLANTING DETAIL

Tree mitigation shall be proposed based on tree removal as per CMB Chapter 46.

The proposed landscape plan shall satisfy or exceed minimum landscape code requirements as prescribed by CMB Code Chapter 126.

LANDSCAPE ARCHITECT

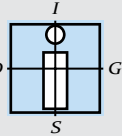
KIM MOYER, A.S.L.A. - LA0000952



LANDSCAPE PLAN

SCALE : 1/8" = 1' - 0"

0 5 10 15



IN-SITE DESIGN GROUP LLC
ARCHITECTURAL SERVICES

1546 Jackson Street
Hollywood, Florida 33020

AA26001758

WWW.INSITEDESIGNGROUP.COM

ANNIE K. CARRUTHERS
ARCHITECT AR-97156

DRB 22-0822

PROJECT:

AZENDA RESIDENCE
205 East San Marino
Drive, Miami Beach, FL
33139-1105

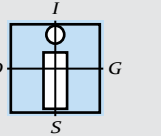
LANDSCAPE
PLAN

DATE:

09-06-2022

ITEM NUMBER:

13-C



IN-SITE DESIGN GROUP LLC
ARCHITECTURAL SERVICES

1546 Jackson Street
Hollywood, Florida 33020

AA26001758
WWW.INSITEDESIGNGROUP.COM

ANNIE K. CARRUTHERS
ARCHITECT AR-97156

DRB 22-0822

PROJECT:

AZENDA RESIDENCE
205 East San Marino
Drive, Miami Beach, FL
33139-1105

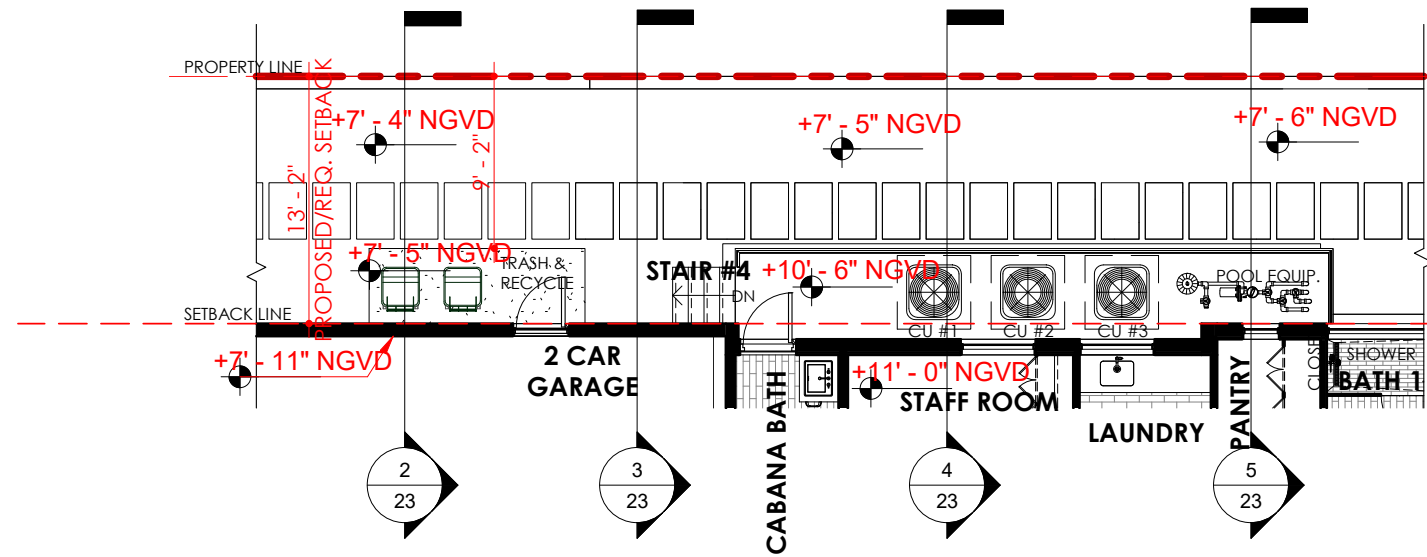
**REQUIRED YARDS
SECTION
DRAWINGS**

DATE:

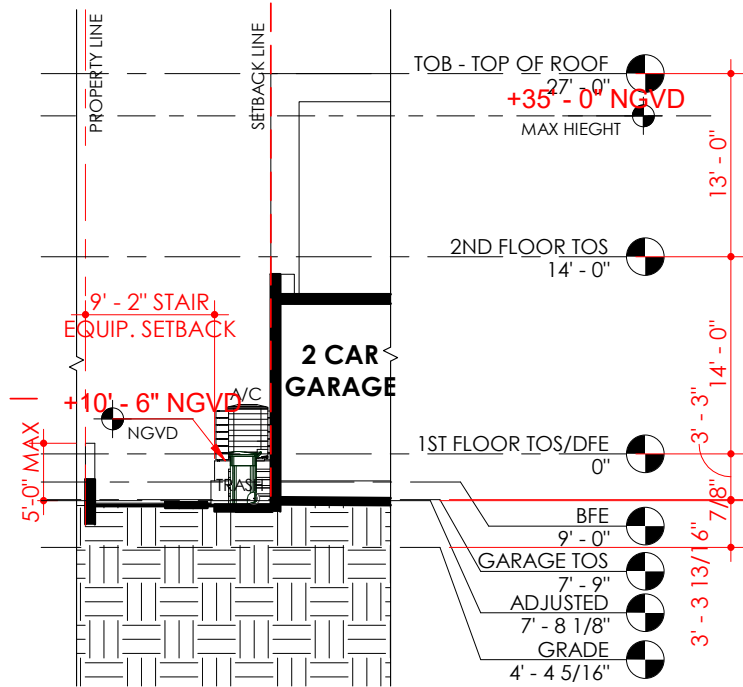
09-06-2022

ITEM NUMBER:

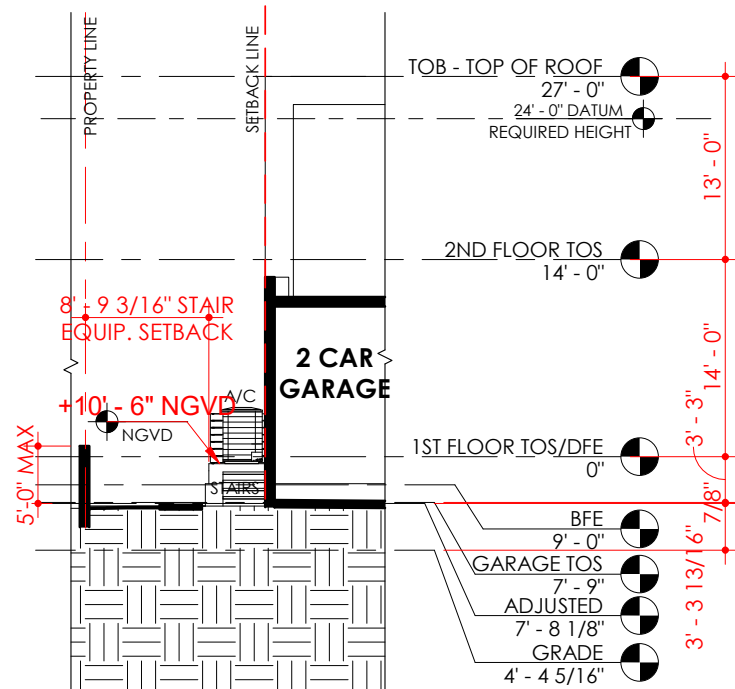
12-T



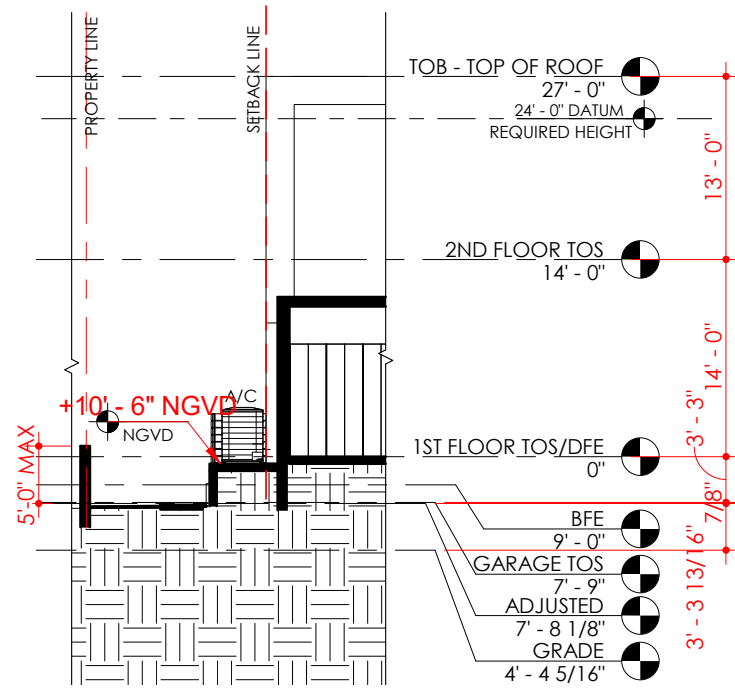
① YARD SECTION-FLOOR PLAN



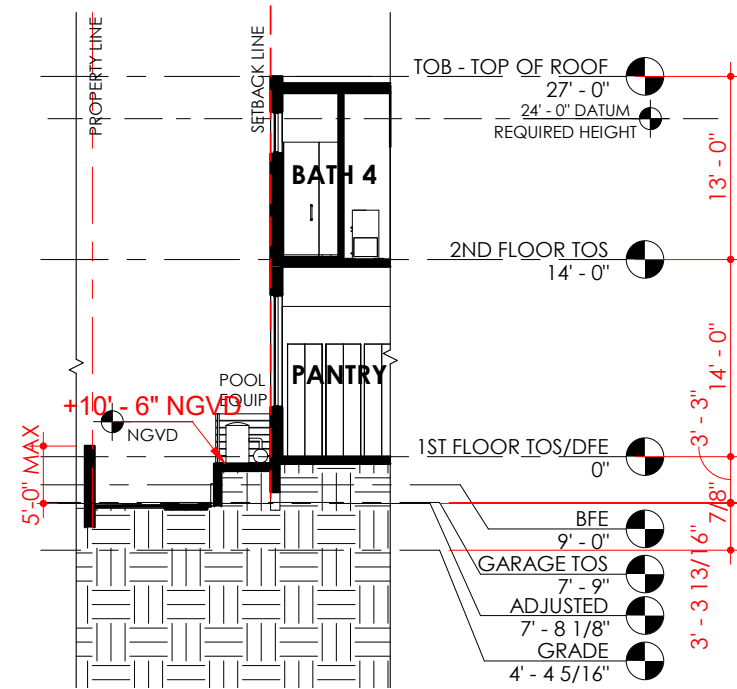
② YARD SECTION 2



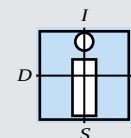
③ YARD SECTION 3



④ YARD SECTION 4



⑤ YARD SECTION 5



IN-SITE DESIGN GROUP LLC
ARCHITECTURAL SERVICES

1546 Jackson Street
Hollywood, Florida 33020

AA26001758
WWW.INSITEDESIGNGROUP.COM
ANNIE K. CARRUTHERS
ARCHITECT AR-97156

DRB 22-0822

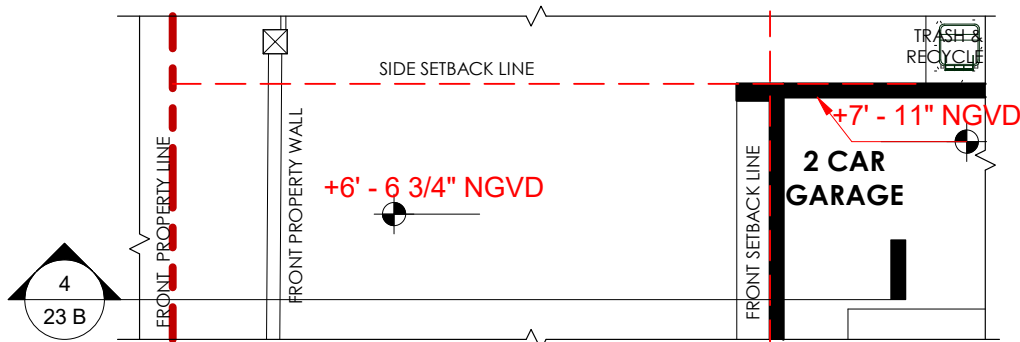
PROJECT:
AZENDA RESIDENCE
205 East San Marino
Drive, Miami Beach, FL
33139-1105

**REQUIRED YARDS
SECTION
DRAWINGS**

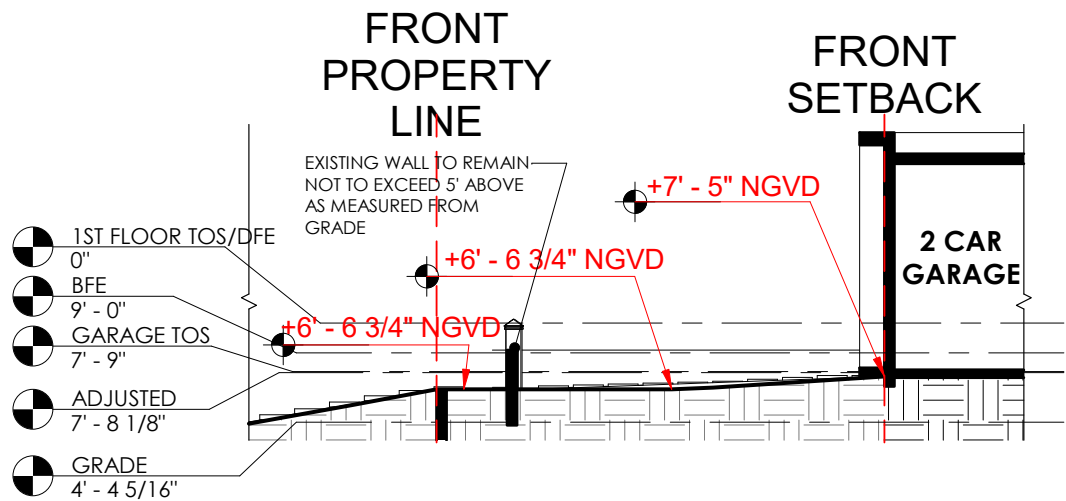
DATE:
09-06-2022

ITEM NUMBER:

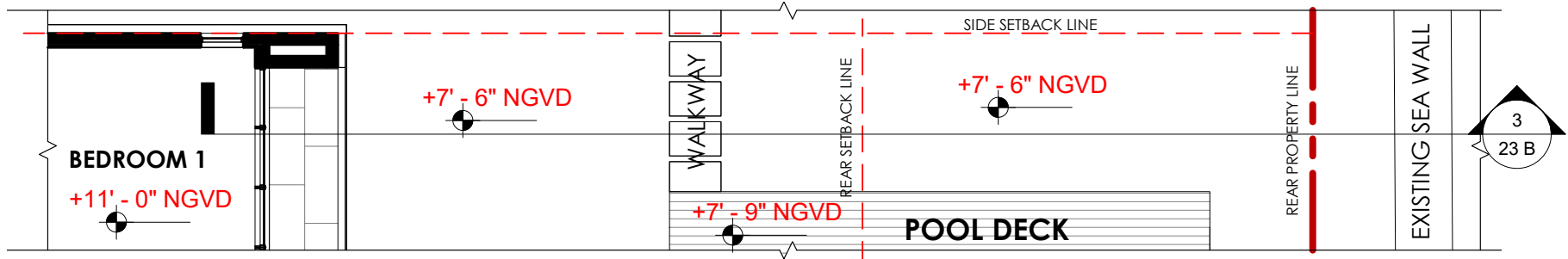
12-T



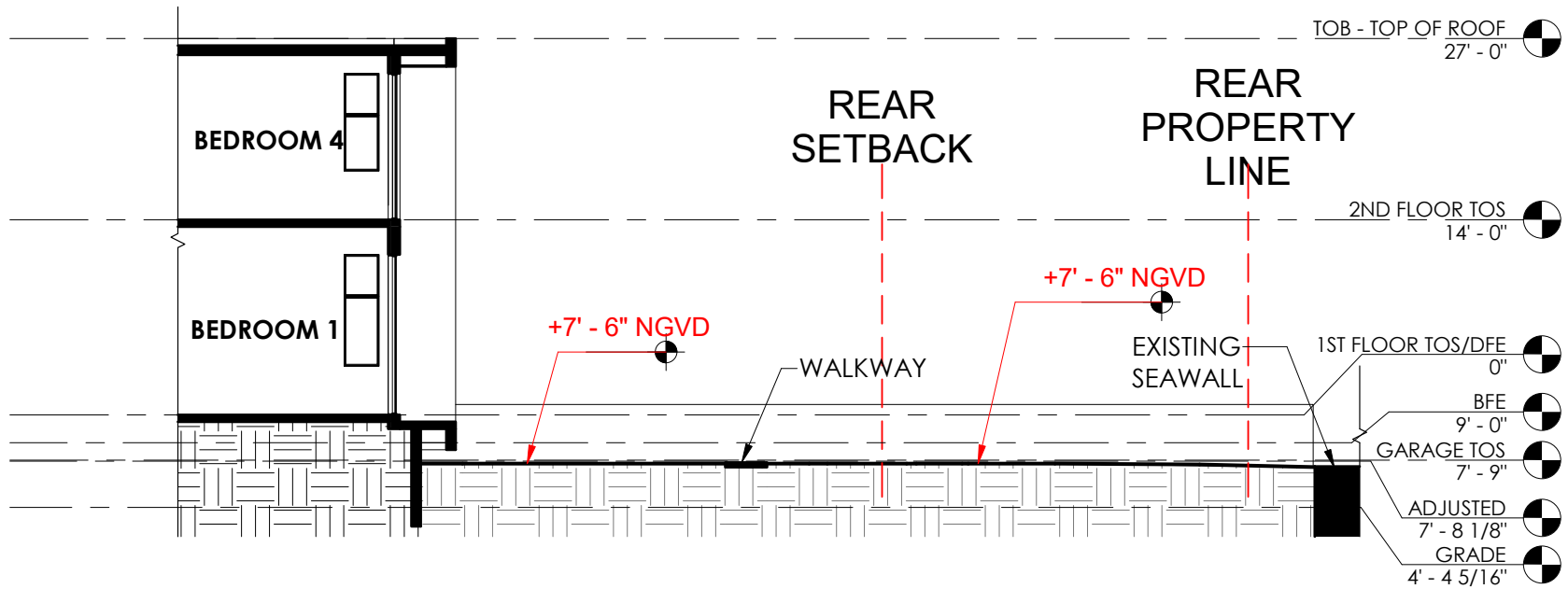
1 FRONT YARD SECTION-FLOOR PLAN



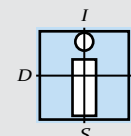
4 YARD SECTION-FRONT



2 REAR YARD SECTION-FLOOR PLAN



3 YARD SECTION-REAR



IN-SITE DESIGN GROUP LLC
ARCHITECTURAL SERVICES

1546 Jackson Street
Hollywood, Florida 33020

AA26001758

WWW.INSITEDESIGNGROUP.COM

ANNIE K. CARRUTHERS
ARCHITECT AR-97156

DRB 22-0822

PROJECT:

AZENDA RESIDENCE
205 East San Marino
Drive, Miami Beach, FL
33139-1105

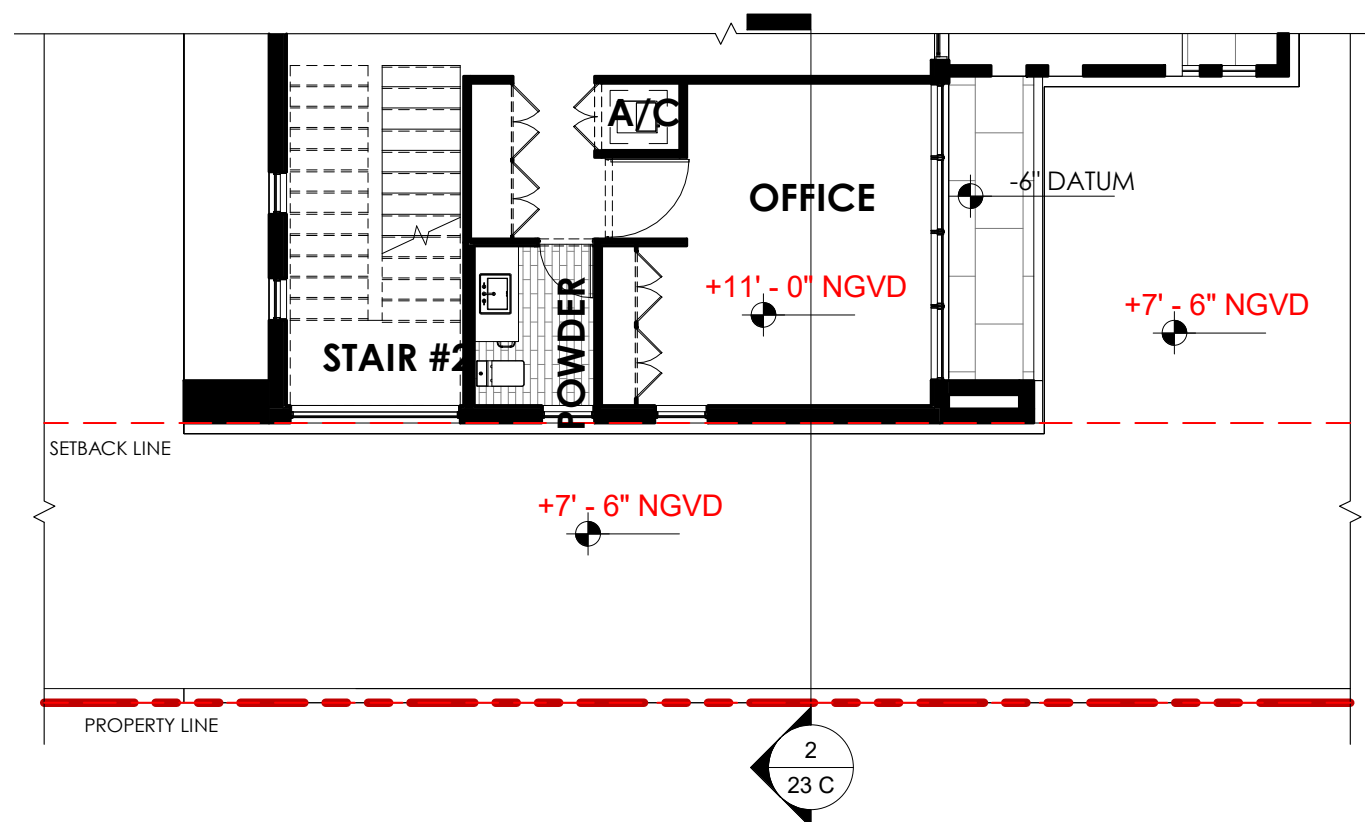
**REQUIRED YARDS
SECTION
DRAWINGS**

DATE:

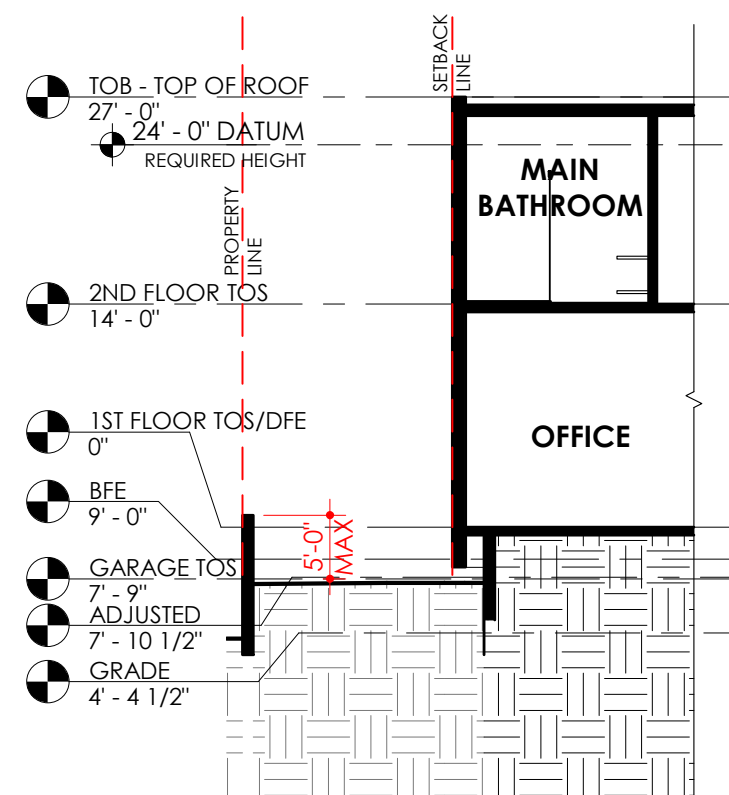
09-06-2022

ITEM NUMBER:

12-T



① YARD SECTION-FLOOR PLAN-2



② YARD SECTION 6