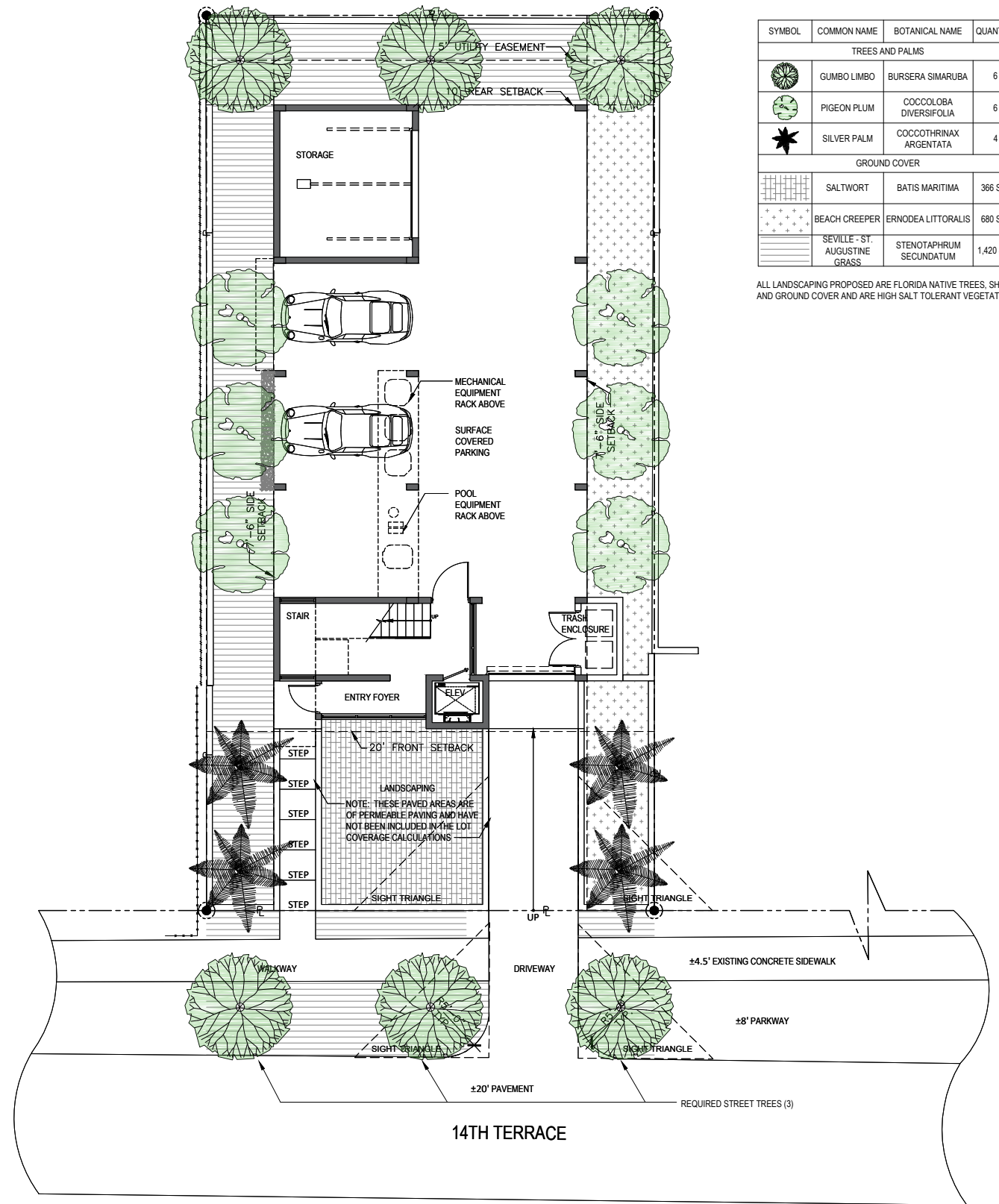


EXISTING TREE DISPOSITION LIST						
	COMMON NAME	BOTANICAL NAME	DBH	HEIGHT	SPREAD	DISPOSITION
1	ARECA PALM	DYPSIS LUTESCENS	6"	10'	8'	REMOVE
2	ARECA PALM	DYPSIS LUTESCENS	7"	13'	8'	REMOVE
3	ARECA PALM	DYPSIS LUTESCENS	7"	12'	8'	REMOVE
4	ARECA PALM	DYPSIS LUTESCENS	7"	9'	8'	REMOVE
5	ARECA PALM	DYPSIS LUTESCENS	7"	9'	8'	REMOVE
6	AVOCADO	PERSEA AMERICANA	5"	16'	9'	REMOVE
TOTAL DBH OF TREES TO BE REMOVED (SUM OF DBH)			39"			
TOTAL NUMBER OF REPLACEMENT TREES REQUIRED (MIN. OF 2" DBH X 6' SPREAD X 12' HEIGHT)				14		
TOTAL NUMBER OF REPLACEMENT TREES PROVIDED (MIN. OF 2" DBH X 6' SPREAD X 12' HEIGHT)				16		

MITIGATION REQUIREMENTS PER SEC. 46-61. OF MIAMI BEACH CODE.

EXISTING TREE DISPOSITION PLAN



SYMBOL	COMMON NAME	BOTANICAL NAME	QUANTITY	DBH	HEIGHT	SPREAD
TREES AND PALMS						
	GUMBO LIMBO	BURSERA SIMARUBA	6	2"	12'	6'
	PIGEON PLUM	COCCOLOBA DIVERSIFOLIA	6	2"	12'	6'
	SILVER PALM	COCCOTHRINAX ARGENTATA	4	2"	12'	6'
GROUND COVER						
	SALTWORT	BATIS MARITIMA	366 S.F.			
	BEACH CREEPER	ERNODEA LITTORALIS	680 S.F.			
	SEVILLE - ST. AUGUSTINE GRASS	STENOTAPHRUM SECUNDATUM	1,420 S.F.			

ALL LANDSCAPING PROPOSED ARE FLORIDA NATIVE TREES, SHRUBS AND GROUND COVER AND ARE HIGH SALT TOLERANT VEGETATION.

LANDSCAPE PLAN