



DRB21-0704 West Avenue Improvements Right of Way

PART 2

City of Miami Beach, Florida

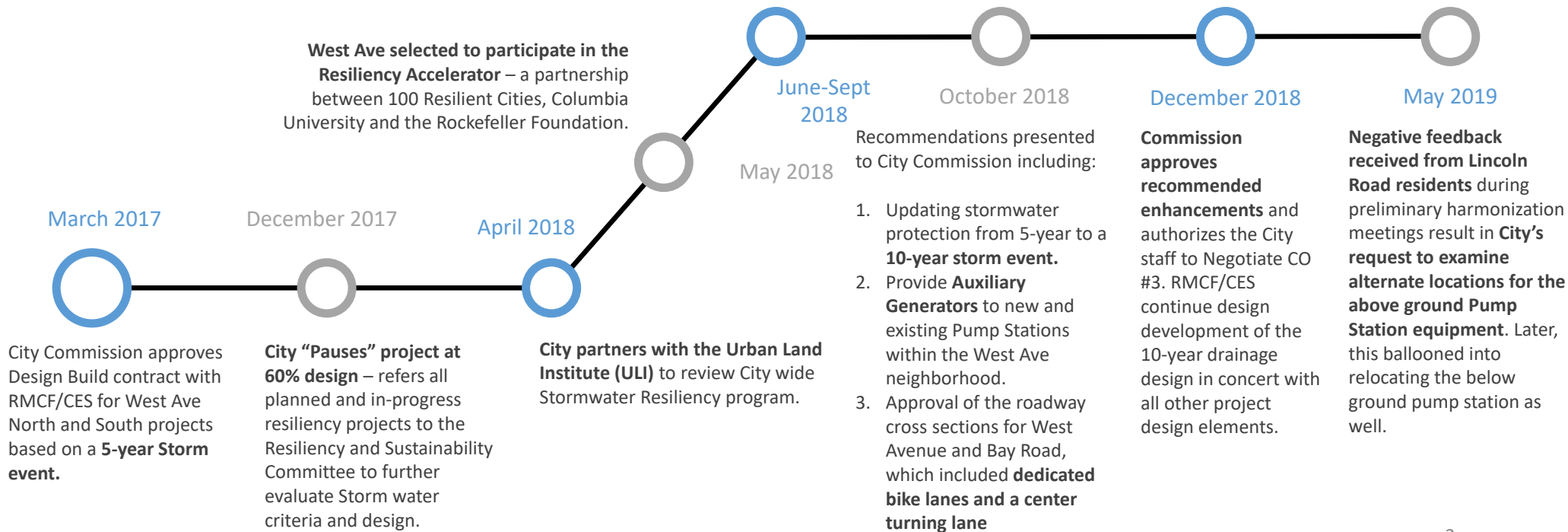
MIAMI BEACH

Presentation Discussion Point

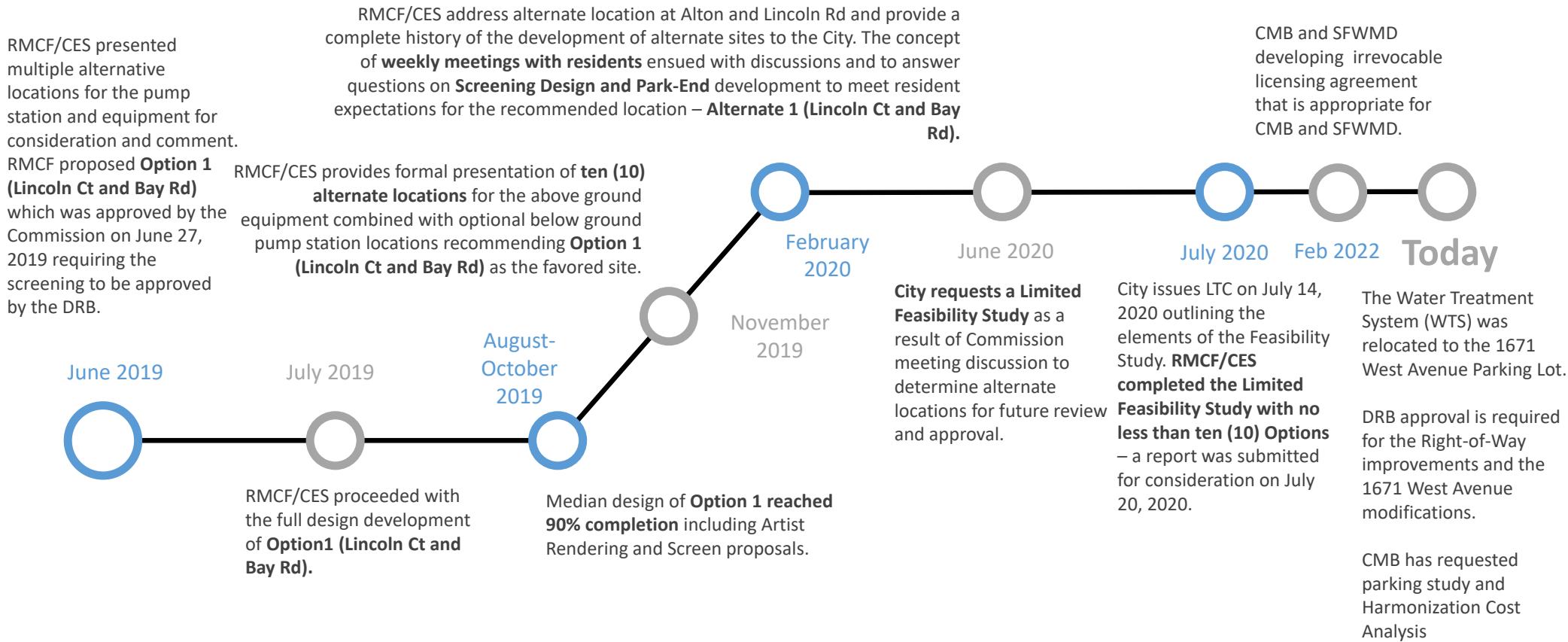
- Project History
- Project location (Entire Right of Way)
- Proposed Design
 - Approved Cross Sections
 - Harmonization
 - Specialty Street Ends
- Proposed Generators
- Materials to be used
- Parking Analysis
- Construction Sequencing
- Current Review Status

West Avenue Phase II Background/History

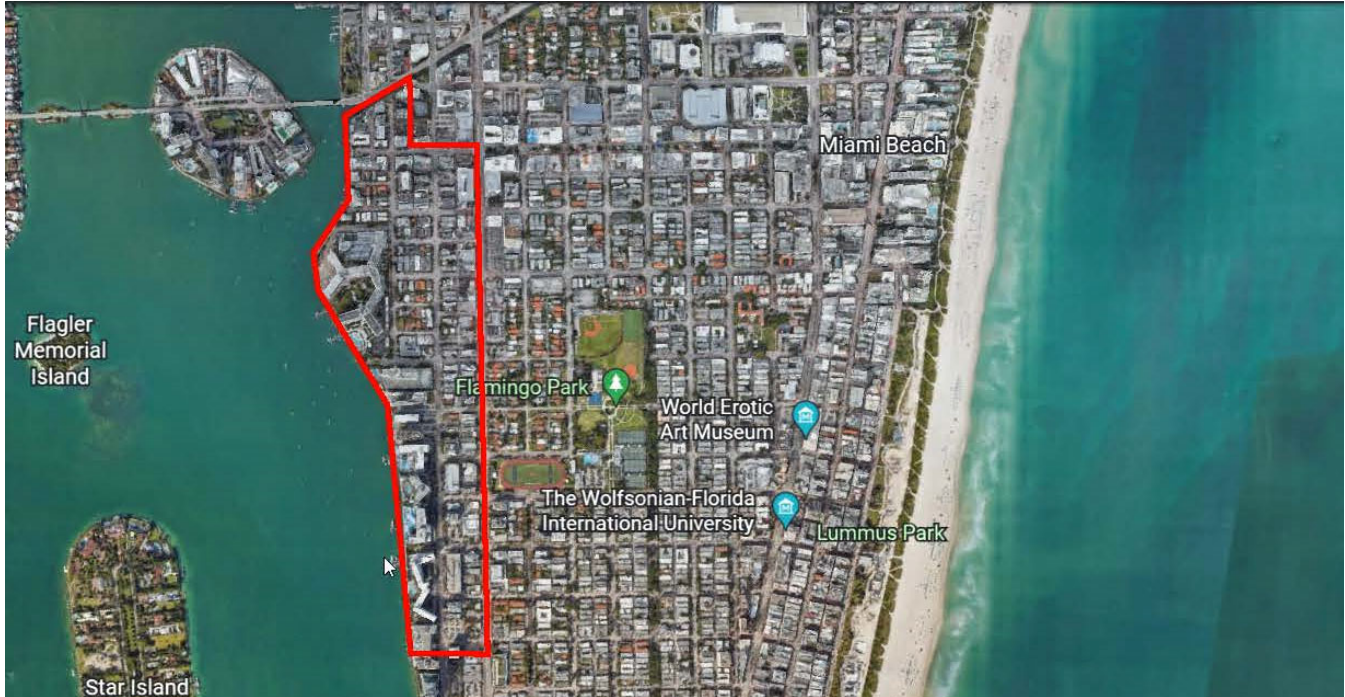
RMCF/CES participates in City staff meetings, workshops, neighborhood meetings **focusing on feedback from the community, working with ULI** experts to formulate a strategy and design concept based on current and future environmental challenges.



West Avenue Phase II Background/History



West Avenue
Basin
Aerial View



EXISTING CONDITIONS

West Avenue
and 8th Street
Facing North



West Avenue
and 16th Street
Facing North



Lincoln Road
Street End
Facing West



Lincoln Terrace
Street End
Facing West

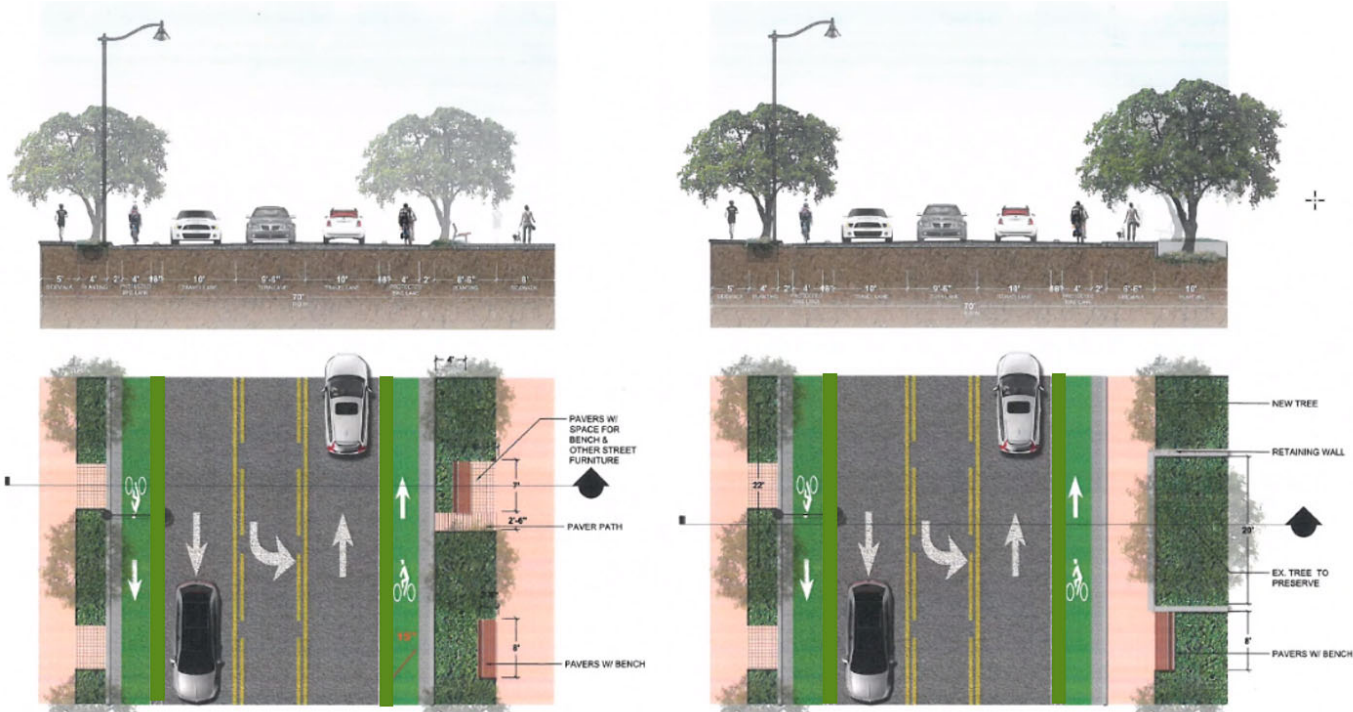


PROPOSED DESIGN

APPROVED CROSS SECTIONS

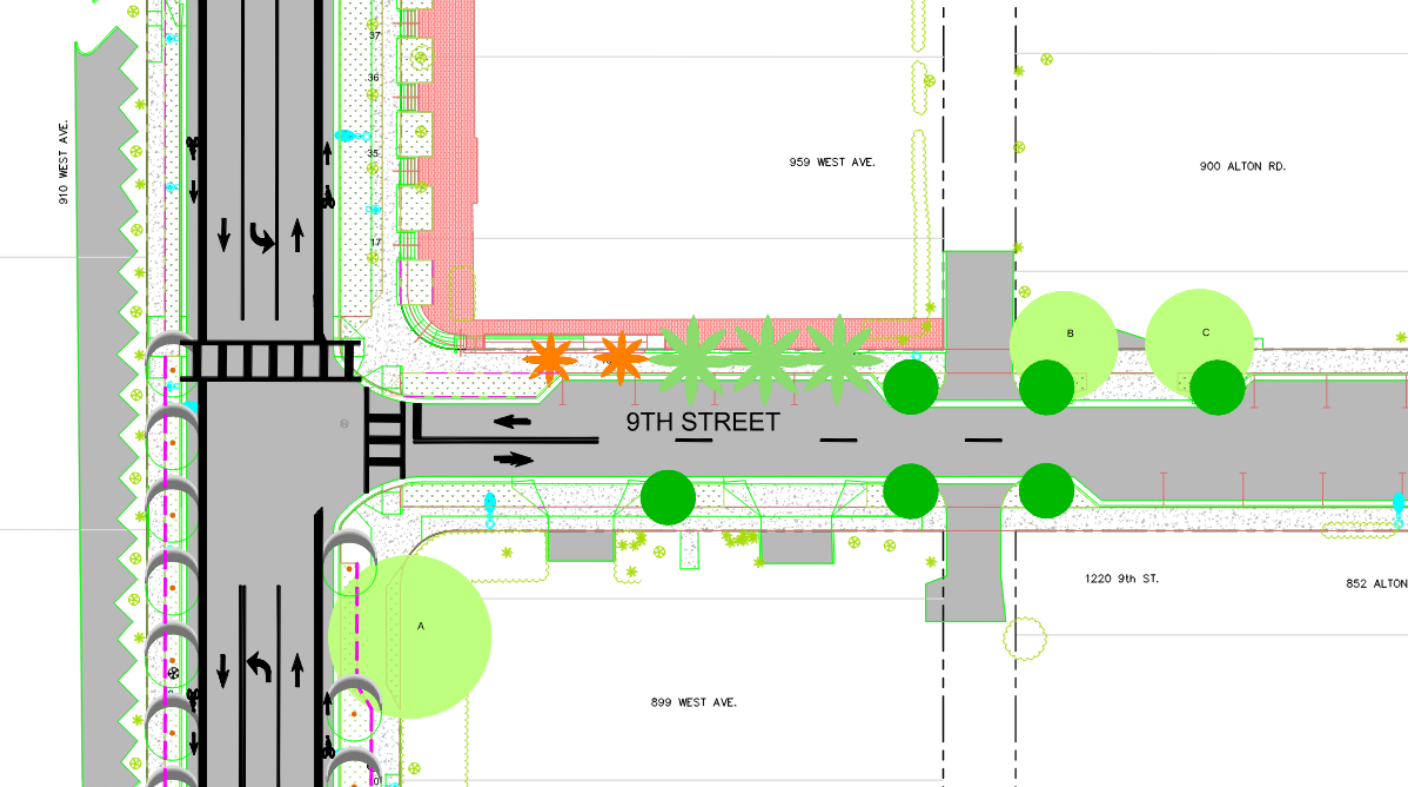
Approved Cross Sections

West Avenue

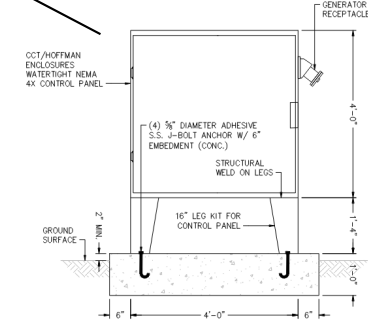
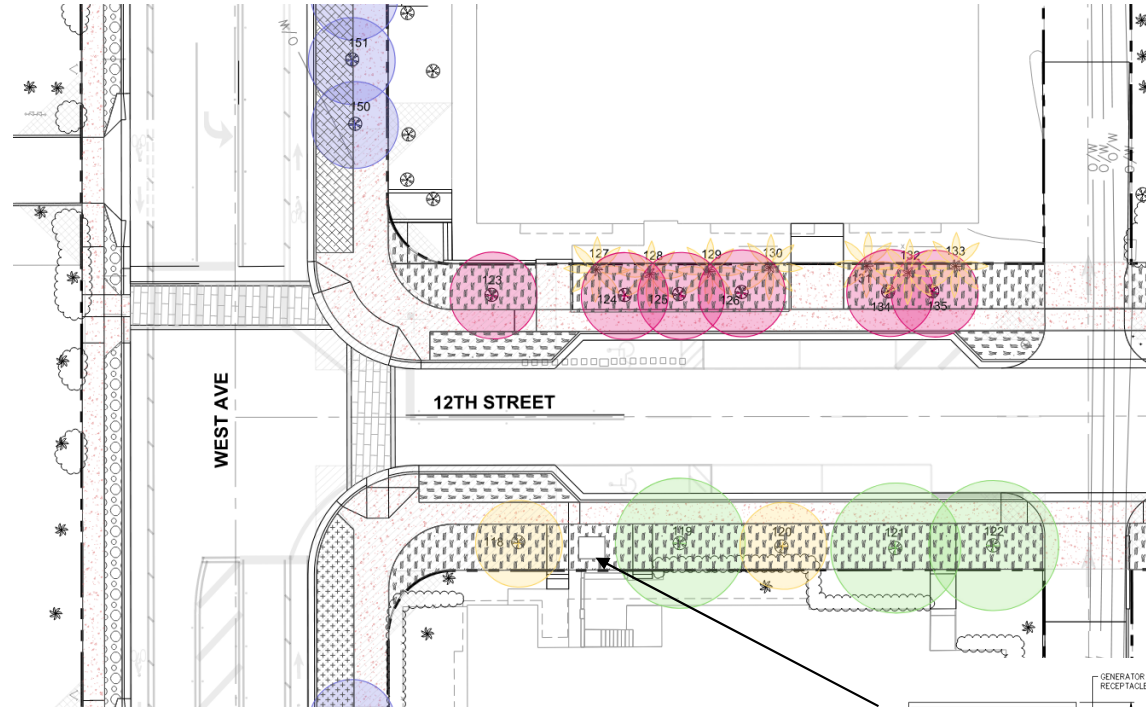


Right of Way Width: 70 feet

Above Ground
Features
Plan View

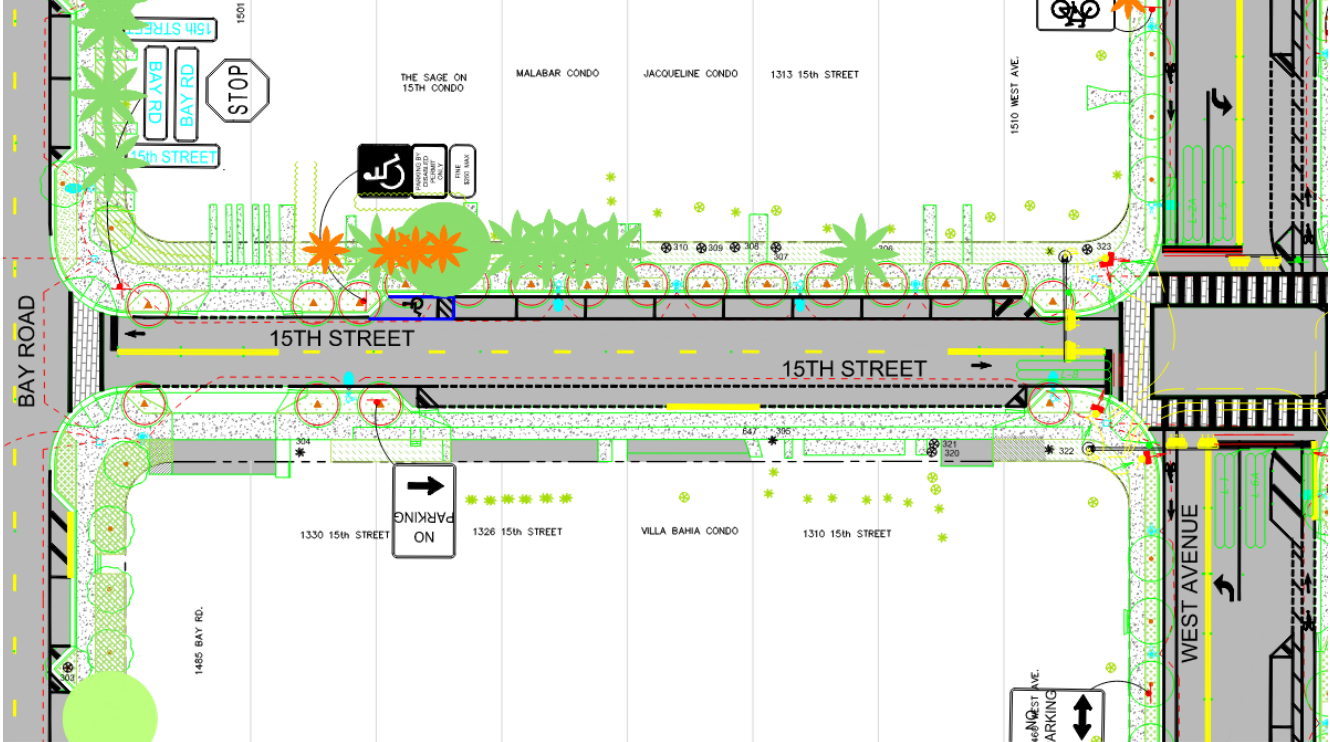


Above Ground Features
Plan View



CONTROL CABINET FRONT VIEW
SCALE: 1/2" = 1'-0"

Above Ground Features
Plan View



9th Street and
West Avenue
Facing North



16th Street and
West Avenue
Facing North



HARMONIZATION

Encroachment and Harmonization Design

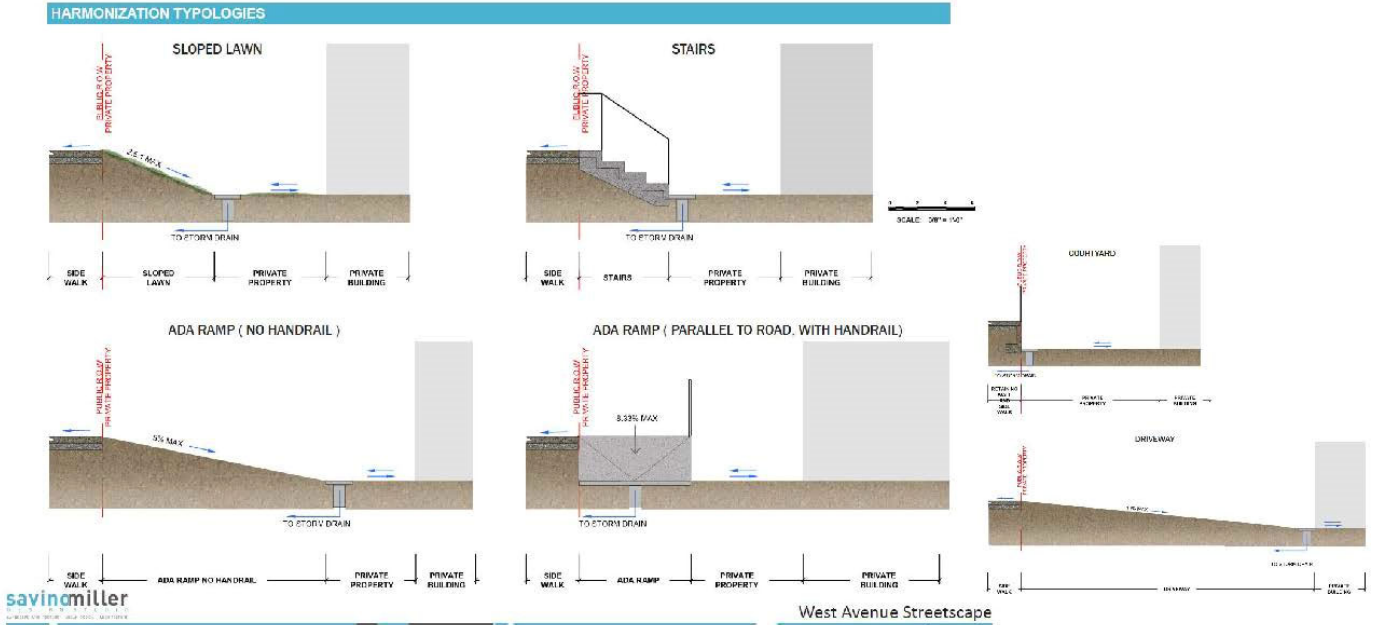
- Encroachments: Private property owned assets installed within the right of way
 - Typical Encroachments
 - Perimeter fences
 - Electronic access call boxes
 - Landscaping (including trees)
 - Lighting fixtures
 - Private property parking stalls
 - Mail boxes
 - Other amenities
 - Typical non-encroachment items
 - Fire safety and fire department connections
 - Water meters
 - Driveway approaches and entrances

Encroachment and Harmonization Design

- Harmonization: Grading work within the private property to remedy the elevation dislocation caused by typical / average road raising (2.25')
 - Typical Harmonization:
 - Grading pervious area by adding fill and grass
 - Grading impervious area by adding fill and restoring with asphalt or concrete
 - Retaining wall – To be used where grading cannot be achieved
 - Typical items impacted by harmonization
 - Landscaping (including trees)
 - Specialty driveways (Anything that is not gravel, concrete, or asphalt)
 - Perimeter fences and associated features (Electric motors, Electronic Access Call Boxes, other amenities)
 - CMB has requested a cost analysis of the harmonization impact to the residents.

Types of Harmonizations

West Avenue



1339 Flamingo
Way



1339 Flamingo
Way



1326 15th Street



1326 15th Street



1237 Lincoln
Road



1237 Lincoln
Road



SPECIALTY STREET END

Lincoln Road
Street End



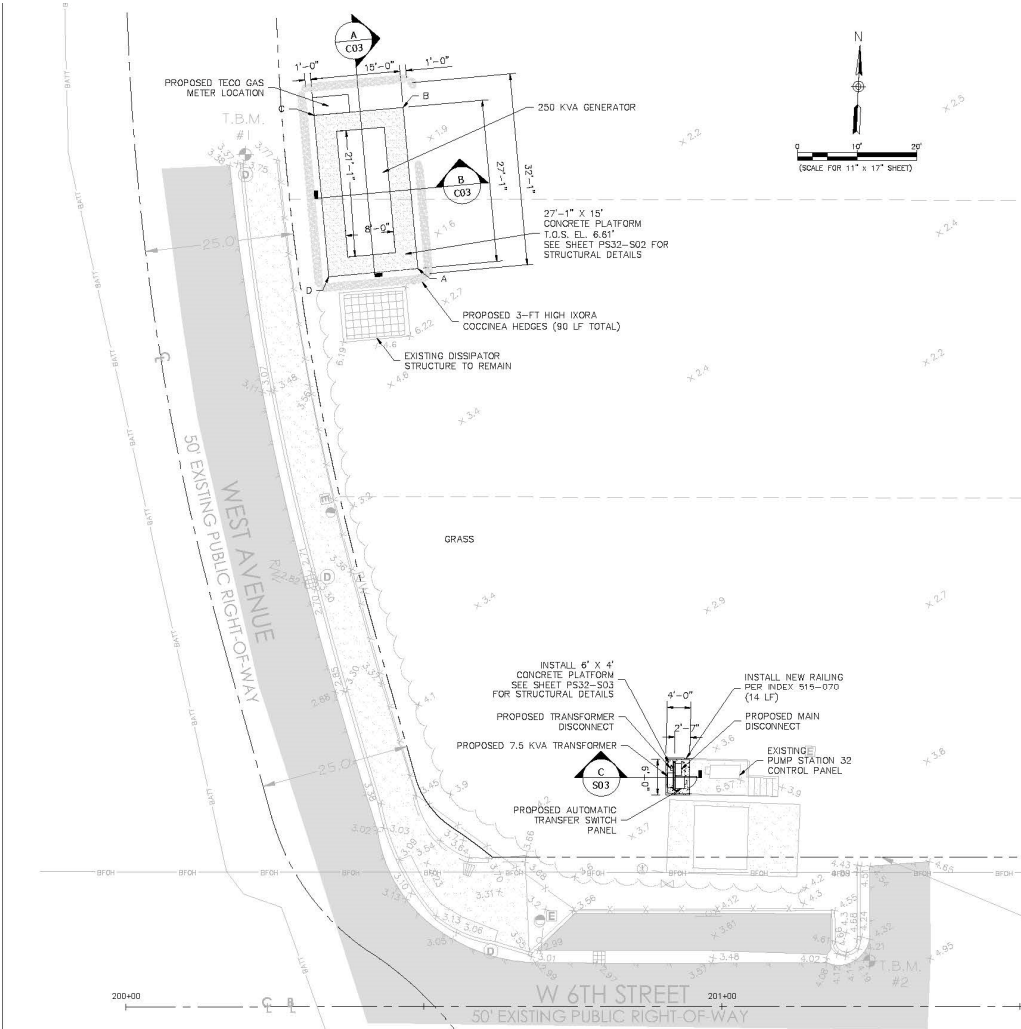


Additional Generators

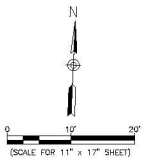
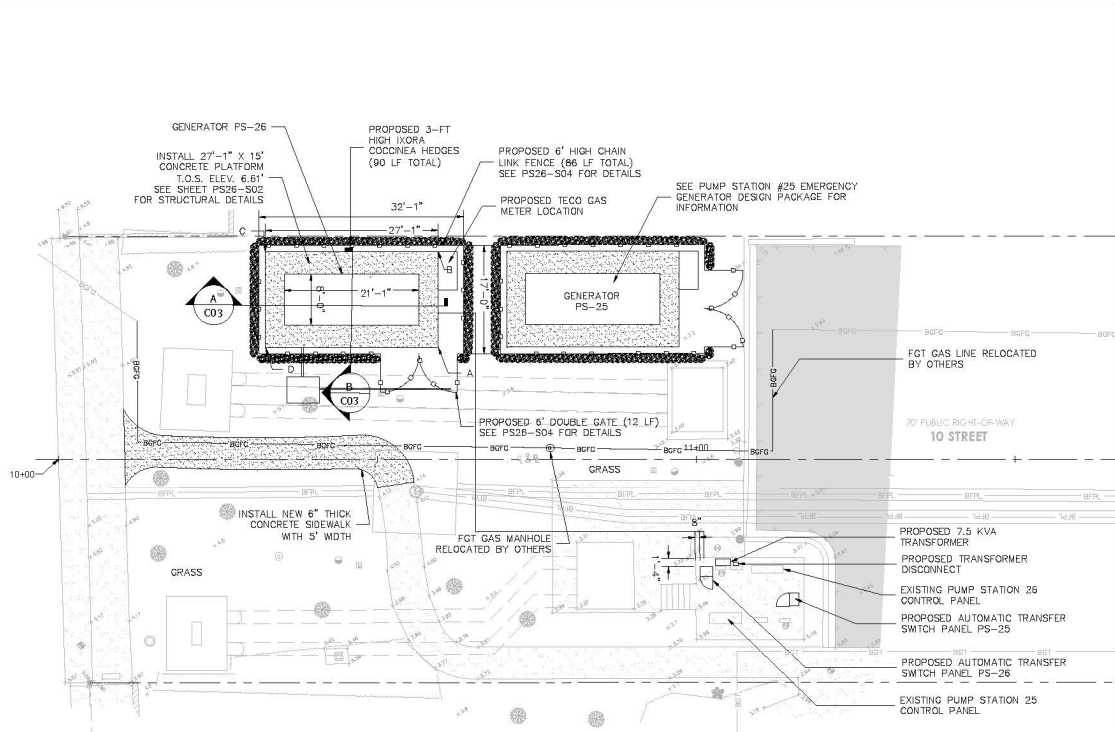
Additional Generators

- CMB has proposed additional generators at the existing pump stations
 - Pump Station Locations:
 - 6th Street Pump Station (Inside Park Currently being Constructed)
 - 10th Street Pump Station (Inside Small Park at street end)
 - 14th Street Pump Station (Inside Small Park at street end)
 - 17th Street Pump Station (Inside Small Park at Intersection of 17th Street and Dade Boulevard)
 - Type of Screening
 - Landscaping

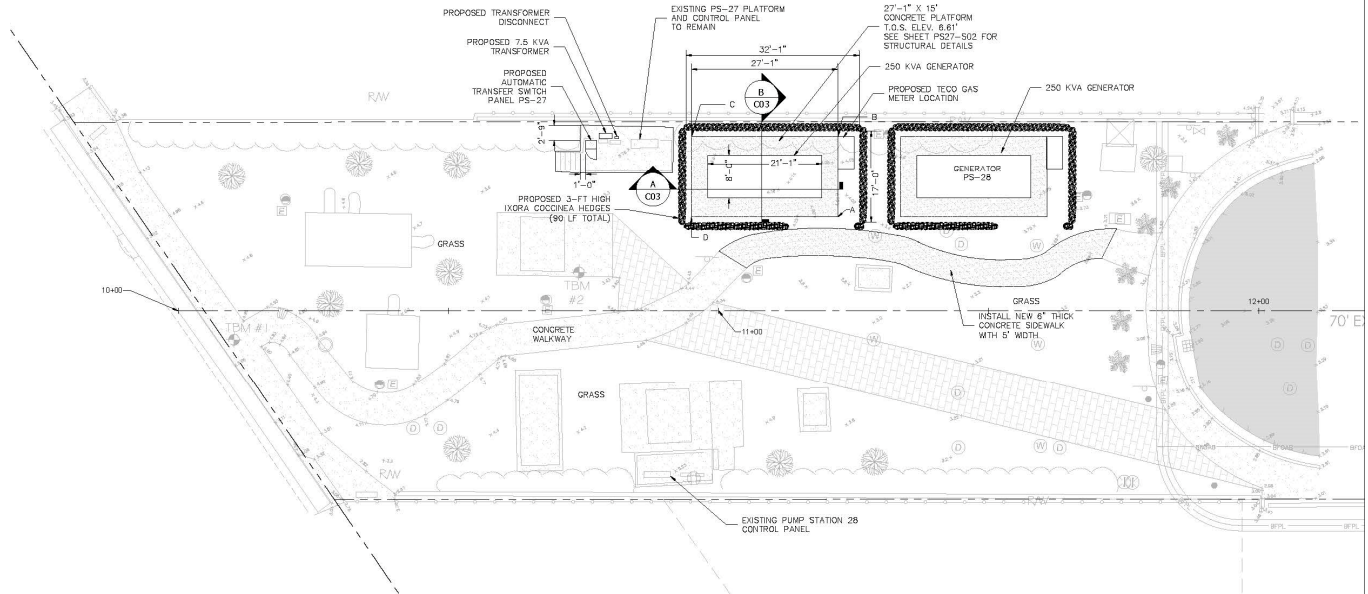
6th Street Generator



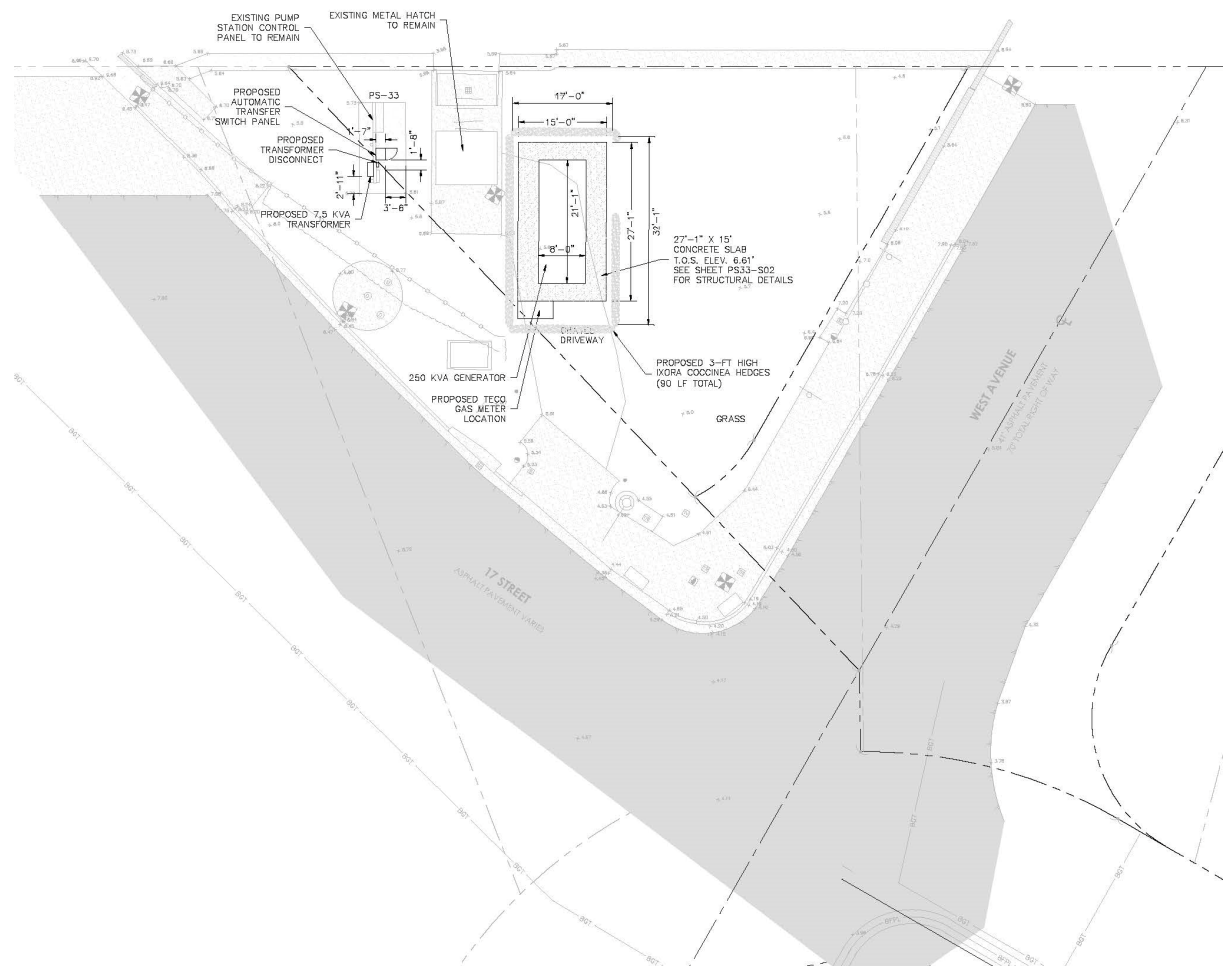
10th Street Generators



14th Street Generators



17th Street Generator

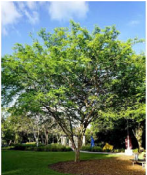


MATERIALS USED ON THE PROJECT

Landscaping Material



Bulnesia arborea
Verawood



Caesalpinia granadillo
Bridal Veil Tree



Cassia fistula
Golden Shower Tree



Cassia bakeriana
Pink Shower Tree



Chorsia speciosa
Silk Floss Tree



Coccobola diversifolia
Pigeon Plum



Coccobola vivifera
Seagrape



Conocarpus erectus
Green Buttonwood



Conocarpus erectus 'Sericeus'
Silver Buttonwood



Lagerstroemia indica
Crepe Myrtle



Lysiloma latisiliqua
Wild Tamarind



Quercus virginiana
Southern Live Oak



Swietenia mahagoni
West Indian Mahogany



Tabebuia impetiginosa
Pink Tabebuia



Roystonea elata
Royal Palm



Veitchia montgomeryana
Veitchia Palm



Sabal palmetto
Sabal Palms



Thrinax radiata
Florida Thatch Palm



Cocos nucifera
Coconut Palm



Chrysobalanus icaco 'Red Tip'
Red Tip Cocoplum



Ficus microcarpa
Green Island Ficus



Hamelia nodosa
Dwarf Firebush



Ilex vomitoria
Yaupon Holly



Jasminum multiflorum
Downey Jasmine



Monstera deliciosa
Split-Leaf Philodendron



Nephrolepis exaltata
Boston fern



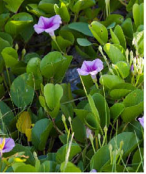
Tripsacum floridanum
Florida Gamagrass



Tripsacum dactyloides
Fakahatchee Grass



Chrysobalanus icaco 'Horizontalis'
Horizontal Cocoplum



Ipomoea pes-caprae
Railroad Vine



Phymatosorus scolopendria
Wart Fern



Spartina bakeri
Sand Cord Grass



Sophora tomentosa
Yellow Necklacepod

Landscaping Material



Bulnesia arborea
Verawood



Coesalpinia granadilla
Bridal Veil Tree



Cassia fistula
Golden Shower Tree



Conocarpus erectus
Green Buttonwood



Conocarpus erectus 'Sericeus'
Silver Buttonwood



Ficus citrifolia
Shortleaf Fig



Quercus virginiana
Southern Live Oak



Roystonea elata
Royal Palm



Ficus microcarpa
Green Island Ficus



Ilex vomitoria
Yaupon Holly



Jasminum multiflorum
Downey Jasmine



Muhlenbergia capillaris
Hairy Muhly Grass, Pink



Chrysobalanus icaco
'Horizontalis'
Horizontal Cocoplum



Tripsacum dactyloides
Fakahatchee Grass



Arachis glabrata
Perennial Peanut



Phymatosorus scolopendria
Wart Fern



Spartina bakeri
Sand Cord Grass

Landscaping Material



Bursera simaruba
Gumbo Limbo



Lyallia latisiliqua
Wild Tamarind



Quercus virginiana
Southern Live Oak



Swietenia mahagoni
West Indian Mahogany



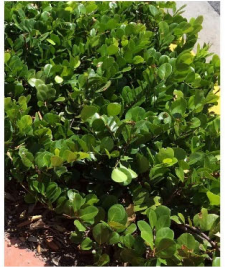
Eugenia foetida
Spanish Stopper



Sabal palmetto
Sabal Palms



Capparis cynophallophora
Jamaican caper



Chrysobalanus icaco 'Horizontalis'
Horizontal Cocoplum



Chrysobalanus icaco 'Red Tip'
Red Tip Cocoplum



Tripsacum floridanum
Florida Gamagrass



Tripsacum dactyloides
Fakahatchee Grass



Zamia pumila
Coontie



GL1970 GALLERY SERIES

LED

Shade Style



Dimensions

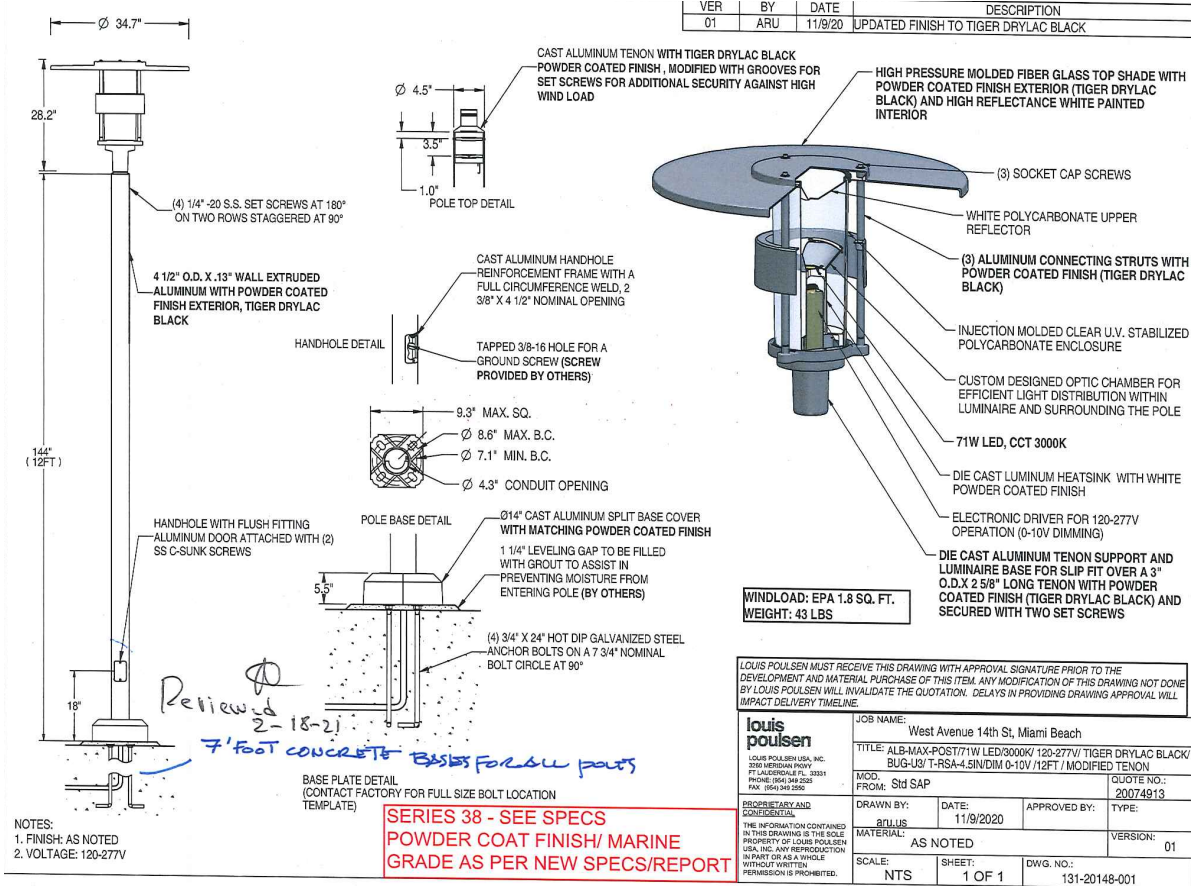
GL1970	SHADE	S	F	B	RF	RR	RS
HOUSING	Diameter	23.9"	23.9"	26"	25"	24.5"	23.8"
BF_	Height	17.9"	16.6"	18.2"	19.6"	19.1"	18.6"
GR_	Height	17.9"	16.6"	18.2"	19.6"	19.1"	18.6"
GW_	Height	17.9"	16.6"	18.2"	19.6"	19.1"	18.6"
SR_	Height	17.9"	16.6"	18.2"	19.6"	19.1"	18.6"

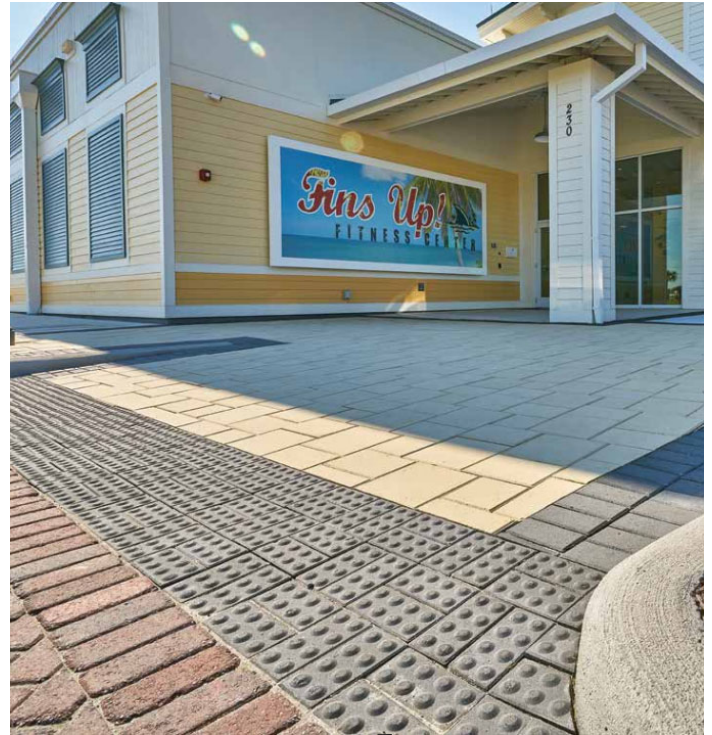


800-621-3376
 555 Lawrence Ave., Roselle, IL 60172
 contactus@sternberglighting.com
 www.sternberglighting.com

©21 STERNBERG LIGHTING. ALL RIGHTS RESERVED. PRINTED IN THE USA.

Lighting Material (Pedestrian Lighting)





Charcoal 4x8 ADA Bricks



Glacier 4x8 Brick Pavers

Handrail Sample



Parking Analysis



West Avenue Improvements - Parking Analysis

Parking Lot	Existing Parking	Proposed Parking	Difference
1625 West Avenue (P-23)	32	32	0
1671 West Avenue (P-24)	57	42	-15

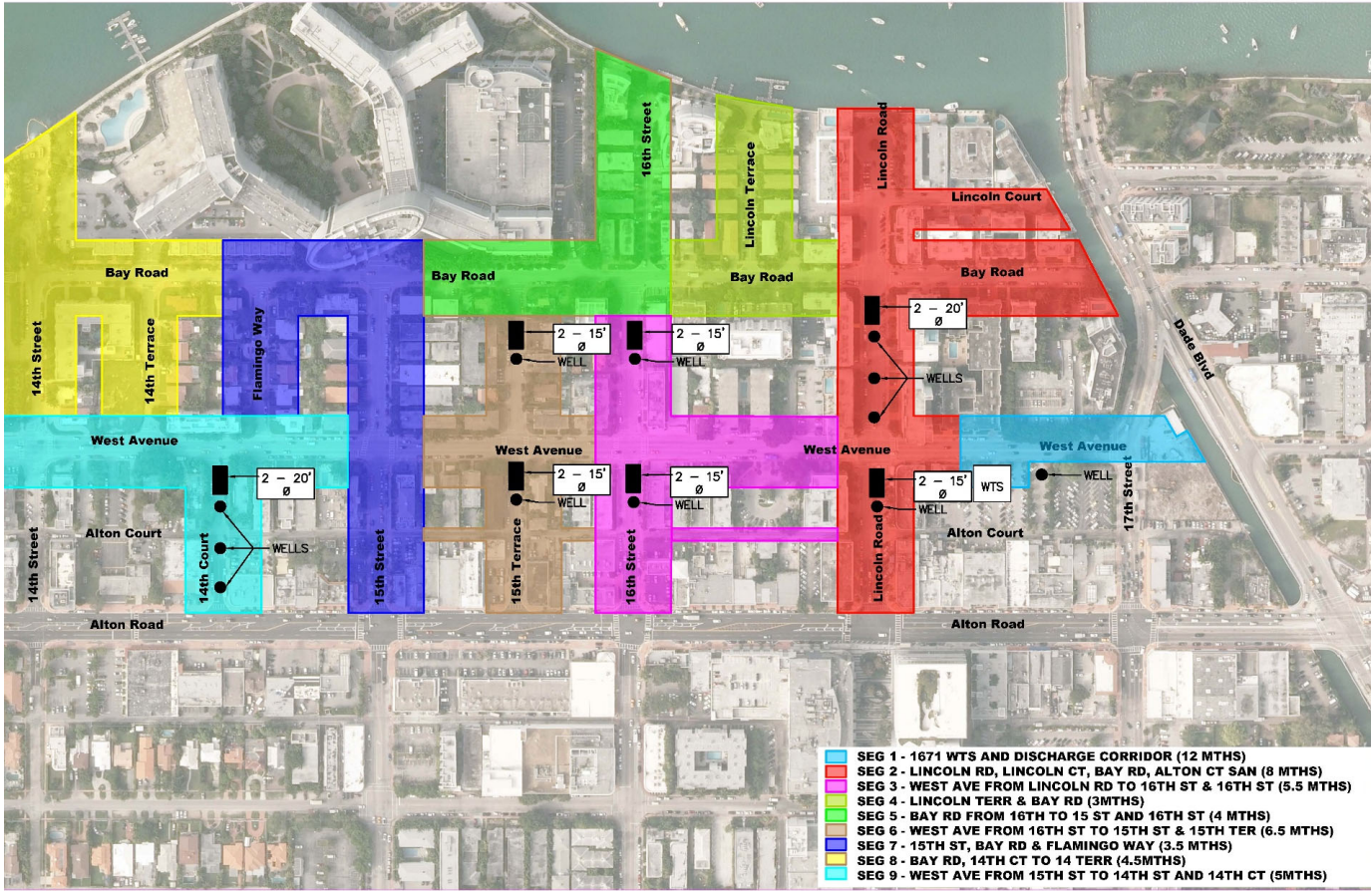
Right of Way	Existing Parking	Proposed Parking	Difference
West Ave from 8th St to 14th St	63	2	-61
West Ave from 14th St to Lincoln Rd	60	23	-37
Bay Rd from 14th St to Dade Canal	89	48	-41
8th St from West Ave to Alton Rd	21	12	-9
9th St from West Ave to Alton Rd	18	10	-8
11th St from West Ave to Alton Rd	18	7	-11
12th St from West Ave to Alton Rd	22	10	-12
13th St from West Ave to Alton Rd	15	11	-4
14th Ct from Bay Rd to Alton Rd	24	14	-10
14th Ter from Bay Rd to Alton Rd	0	0	0
15th St from Bay Rd to Alton Rd	16	21	5
Flamingo Way from Bay Rd to West Ave	0	0	0
15th Ter from Bay Rd to Alton Rd	32	14	-18
16th St from Bay Rd to Alton Rd	32	20	-12
Lincoln Ter from Biscayne Bay to Bay Rd	21	22	1
Lincoln Ct from Lincoln Rd to Dade Canal	0	0	0
Lincoln Rd from Biscayne Bay to Alton Rd	59	50	-9
Total:	490	264	-226

Total for Project: 579 338 -241

Construction Sequencing

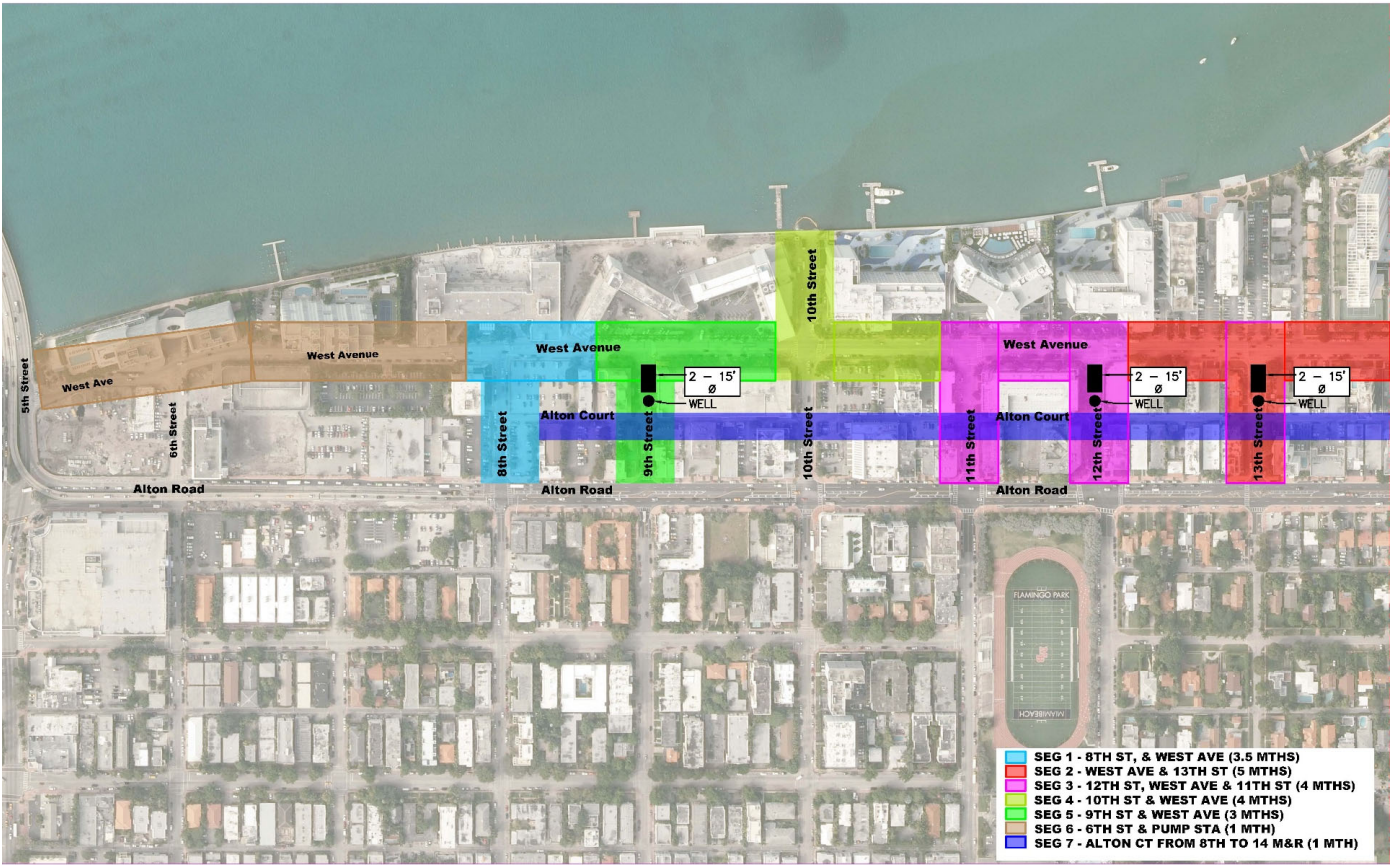
Construction Segments (North)

WEST AVE - PROPOSED CONSTRUCTION SEGMENTS - NORTH 091



Construction Segments (South)

WEST AVE - PROPOSED CONSTRUCTION SEGMENTS - SOUTH 090



Current Review Status

Current Review Status

- Water Main
 - City of Miami Beach Public Works Department (Approved)
 - City of Miami Beach Fire Department (Approved)
 - Miami-Dade County DERM (Approved)
 - Florida Department of Health (Approved)
- Sanitary Sewer
 - City of Miami Beach Public Works Department (Approved)
 - Miami-Dade County DERM (Approved)
- Stormwater
 - City of Miami Beach Public Works Department (Approved)
 - City of Miami Beach Building Department (Under Review)
 - Miami-Dade County DERM (Approved)
 - Florida Department of Environmental Protection (Under Review)
 - South Florida Water Management District (Under Review)
- Landscaping
 - City of Miami Beach Public Works Department (Approved)
 - City of Miami Beach Urban Forestry (Under Review)

Current Review Status (Continued)

- Roadway
 - City of Miami Beach Public Works Department (Approved)
 - City of Miami Beach Transportation (Under Review)
 - City of Miami Beach Fire Department (Under Review)
- Lighting and Signalization
 - City of Miami Beach Public Works Department (Approved)
 - Miami-Dade County Public Works Department (Under Review)
- Maintenance of Traffic
 - City of Miami Beach Public Works Department (Approved)
 - City of Miami Beach Transportation (Under Review)
 - Miami-Dade County Public Works Department (Approved)
 - Florida Department of Transportation (Approved)



Questions?