

Mount Sinai

MEDICAL CENTER

Braman Cancer Center

4300 Alton Road
Miami Beach, Florida 33140

DRB22-0845
11 July 2022
Final Submission

Mount Sinai
MEDICAL CENTER
Braman Cancer Center
CANNONDESIGN
ARCHITECT CORPORATION
CANNON FLORIDA INC.
AAC000314 8874

TLC ENGINEERING SOLUTIONS
LANGAN

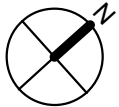
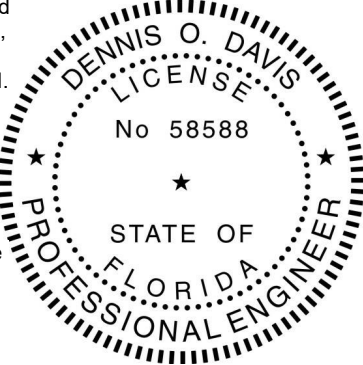


DRB22-0845
Final Submission
11 July 2022

Dennis O. Davis, P.E.
Florida License #58588

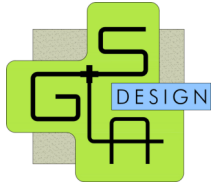
This item has been electronically sealed by Dennis O. Davis, PE, on the date adjacent to the seal.

Printed copies of this document are not considered signed and sealed and the SHA authentication code must be verified on any electronic copies.



TLC Engineering

PART 4 of 4



DRB22-0845
 Final Submission
 11 July 2022

Symbol	Qty	Label	Arrangement	(MANUFAC)	Description	LLF	Luminaire Lumens	Luminaire Watts	Total Watts
[Symbol]	12	B	Single	WE-EF USA	108-1067_us	0.900	8532	97	1164
[Symbol]	51	A	Single	WE-EF USA	108-1067_us	0.900	8532	97	4947
[Symbol]		D1	Single			0.900	2000	9.9	99
[Symbol]		F1	Single			0.900	2000	54	54

Label	CalcType	Units	Avg	Max	Min	Avg/Min	Max/Min	PSp/Lr	Grid Z
DROP OFF	Illuminance	Fc	2.29	4.6	1.0	2.29	4.60	10	0
ENTRY DRIVE	Illuminance	Fc	2.35	4.3	1.0	2.35	4.30	10	0
LOADING DOCK TO GENERATORS	Illuminance	Fc	2.36	4.6	1.0	2.36	4.60	10	0
PARKING LOT	Illuminance	Fc	2.43	5.3	1.0	2.43	5.30	10	0
WALKWAY-DRIVE	Illuminance	Fc	4.31	11.0	1.0	4.31	11.00	10	0

THE CITY OF MIAMI CODE
 - 1.0 FC MIN FOR PARKING AND PEDESTRIAN AREAS
 - NO GREATER THAN A 12:1 MAX. MIN. RATIO

1 EXTERIOR SITE LIGHTING - PHOTMETRICS
 1" = 80'-0"



**ELECTRICAL -
 SITE LIGHTING -
 PHOTMETRICS**

E001