

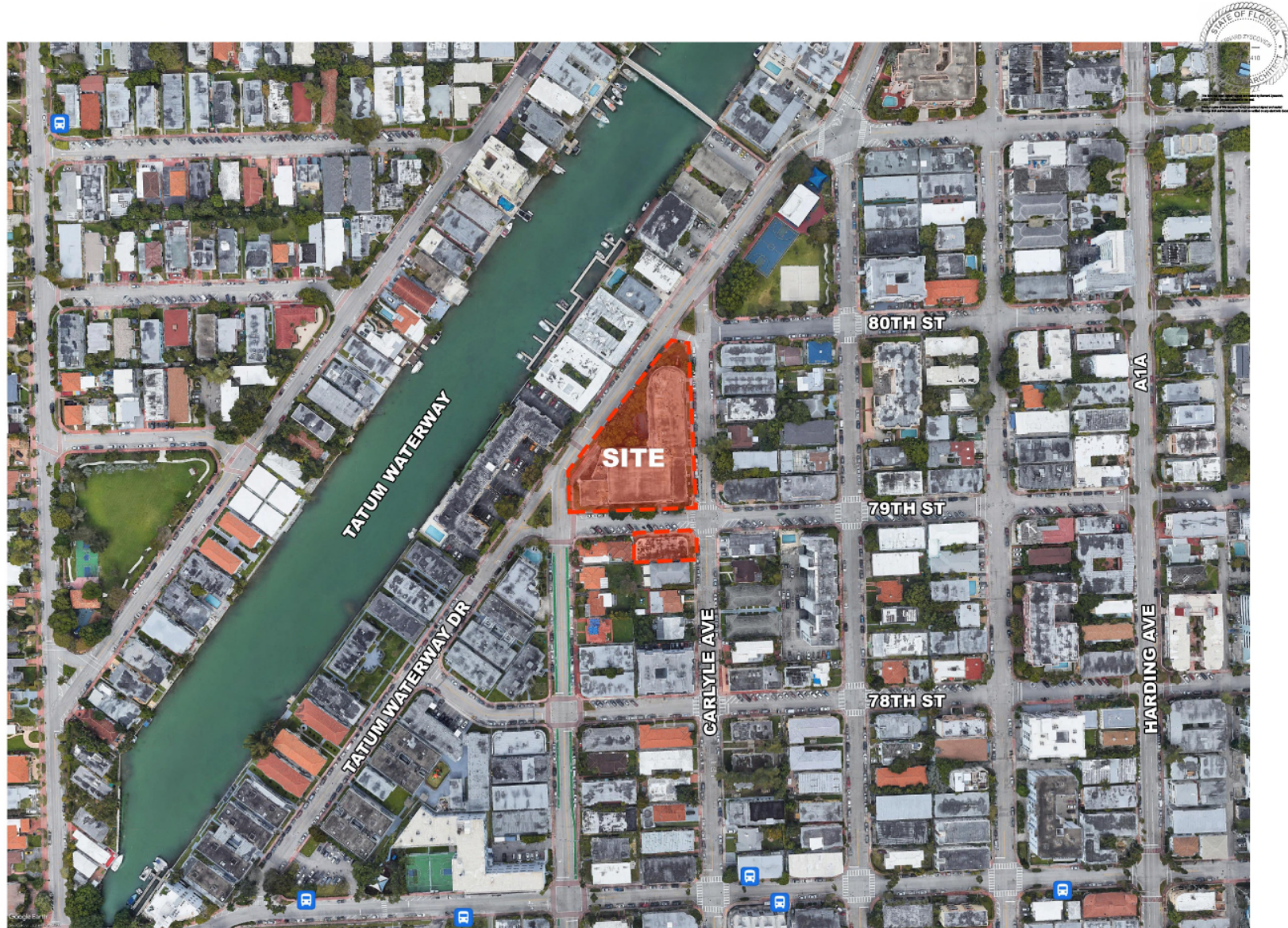
# PB22-0501 – 7902 Carlyle Ave & 600 79 ST Yeshiva Elementary School

July 26, 2022 Planning Board Meeting – Item 12



**ZYSCOVICH**  
ARCHITECTS

# Location





# Site History & Request

- **1957:** Developed as Synagogue and educational facility
- **1999:** Converted to Elementary School
- **Present:** 355 students enrolled

**Request:** Expansion to 520 students

**IMPROVE YOUR ABILITY TO THINK,  
REASON, AND DISCUSS**

**TAKE A  
FREE COURSE IN FUNDAMENTAL ECONOMICS**

A study in understanding today's vital issues: rising taxes, unemployment, discrimination, the business cycle, inflation, national growth, etc.

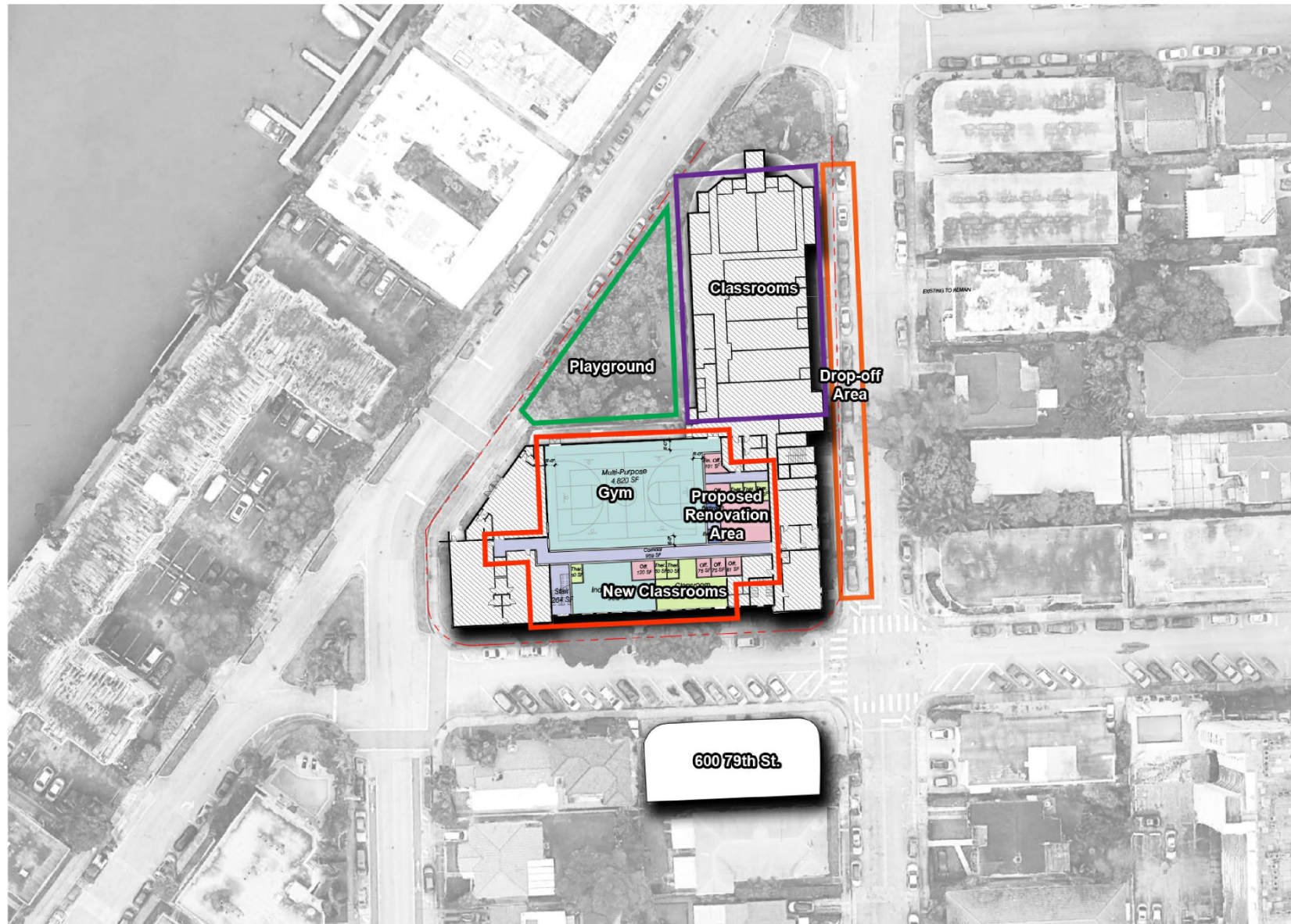
Based on a study recommended by: Winston Churchill, Albert Einstein, Aldous Huxley, Raymond Moley, Franklin D. Roosevelt, Woodrow Wilson, and many others.

**(Certificate of Completion awarded)**

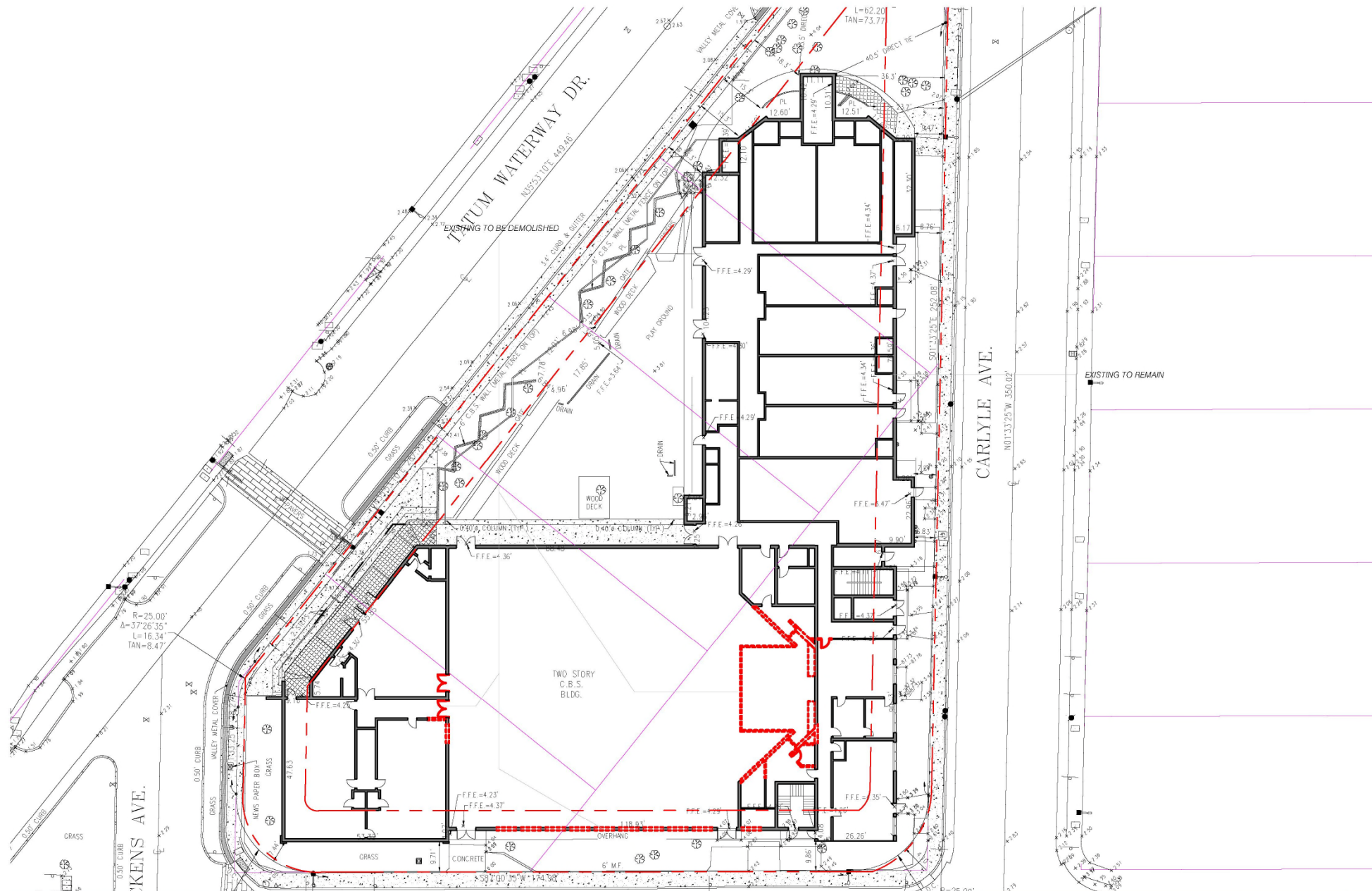
One 2 hour session a week for 10 weeks. Offered as a public service by Henry George School, chartered by University of State of New York.

**TUESDAY, JANUARY 14, 1964 — 8:00 P.M.**  
**Temple Ner Tamid, 7902 Carlyle Ave., Miami Beach**  
**Mr. Raymond Abrams, Moderator**

Attend the first session, then decide if you will enroll. For further information call UN 6-9833 (days) or PL 4-8537 (evenings).







## Yeshiva Elementary School

No copies, transmissions, reproductions, or electronic revisions of any portions of these drawings in whole or in part be made without the express written permission of Zyscovich Architects. All designs indicated in these drawings are property of Zyscovich Architects. All copyrights reserved © 2022.

Level 1 - Demolition

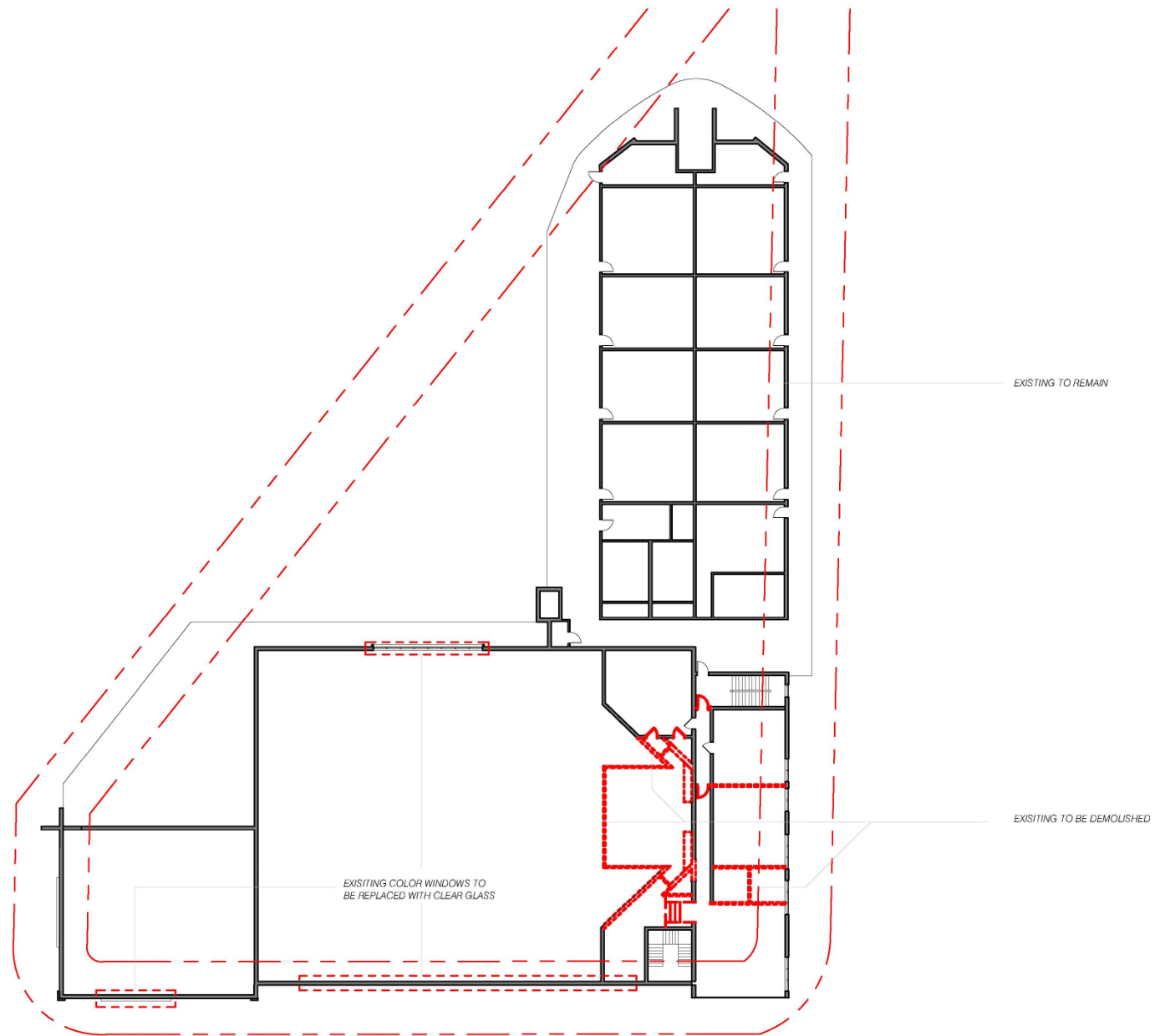
1" = 30'-0"

May 31, 2022

**ZYSCOVICH**  
ARCHITECTS

100 N Biscayne Blvd., 27th Fl  
Miami, FL 33132.2304  
t 305.372.5222 f 305.577.4521

e info@zyscovich.com  
w www.zyscovich.com



## Yeshiva Elementary School

No copies, transmissions, reproductions, or electronic revisions of any portions of these drawings in whole or in part be made without the express written permission of Zyscovich Architects. All designs indicated in these drawings are property of Zyscovich Architects. All copyrights reserved © 2022.

Level 2 - Demolition

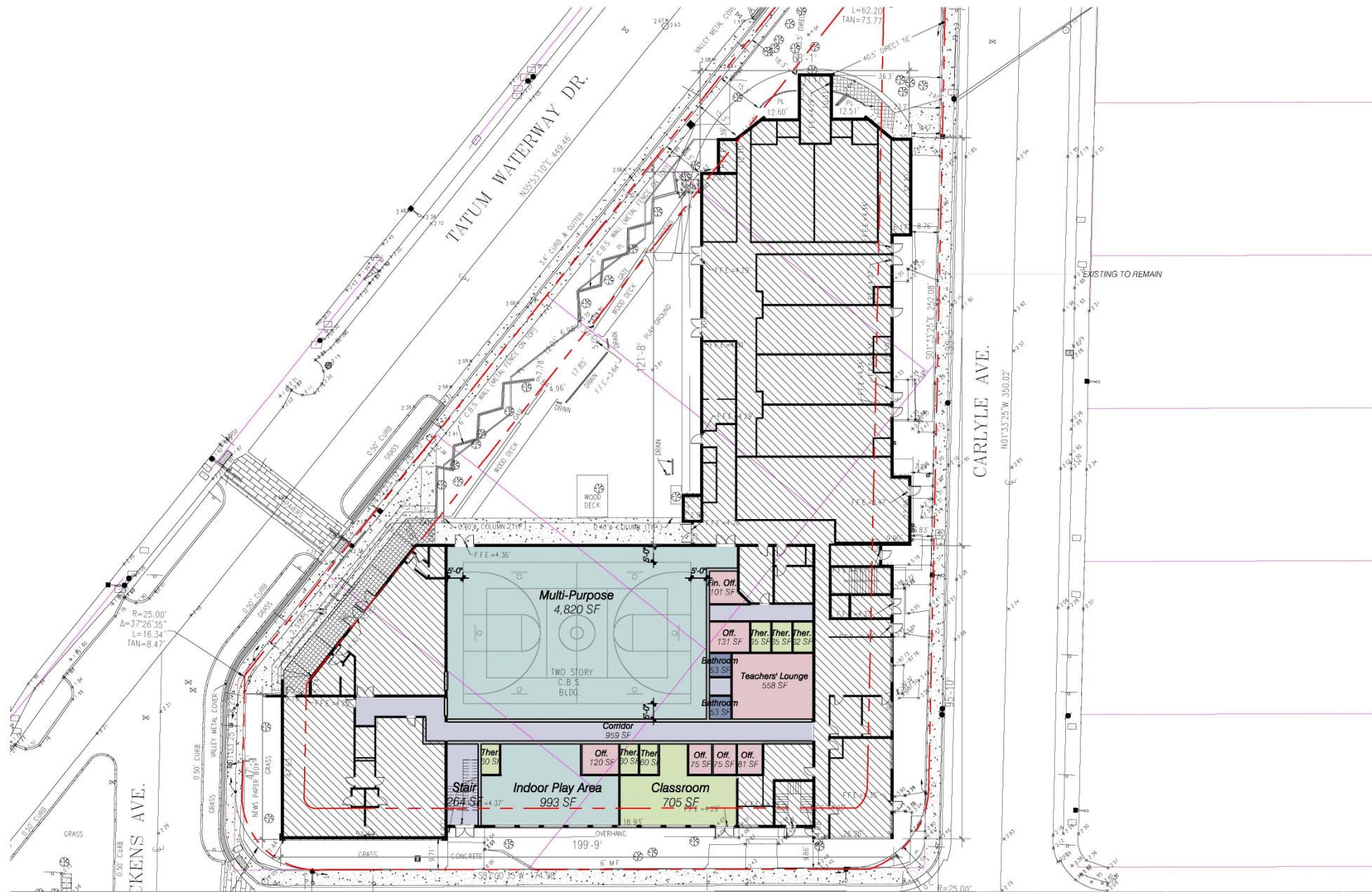
1" = 30'-0"

May 31, 2022

**ZYSCOVICH**  
ARCHITECTS

100 N Biscayne Blvd., 27th Fl  
Miami, FL 33132.2304  
t 305.372.5222 f 305.577.4521

e info@zyscovich.com  
w www.zyscovich.com



## Yeshiva Elementary School

No copies, transmissions, reproductions, or electronic revisions of any portions of these drawings in whole or in part be made without the express written permission of Zyscovich Architects. All designs indicated in these drawings are property of Zyscovich Architects. All copyrights reserved © 2022.

Level 1 - Proposed

1" = 30'-0"

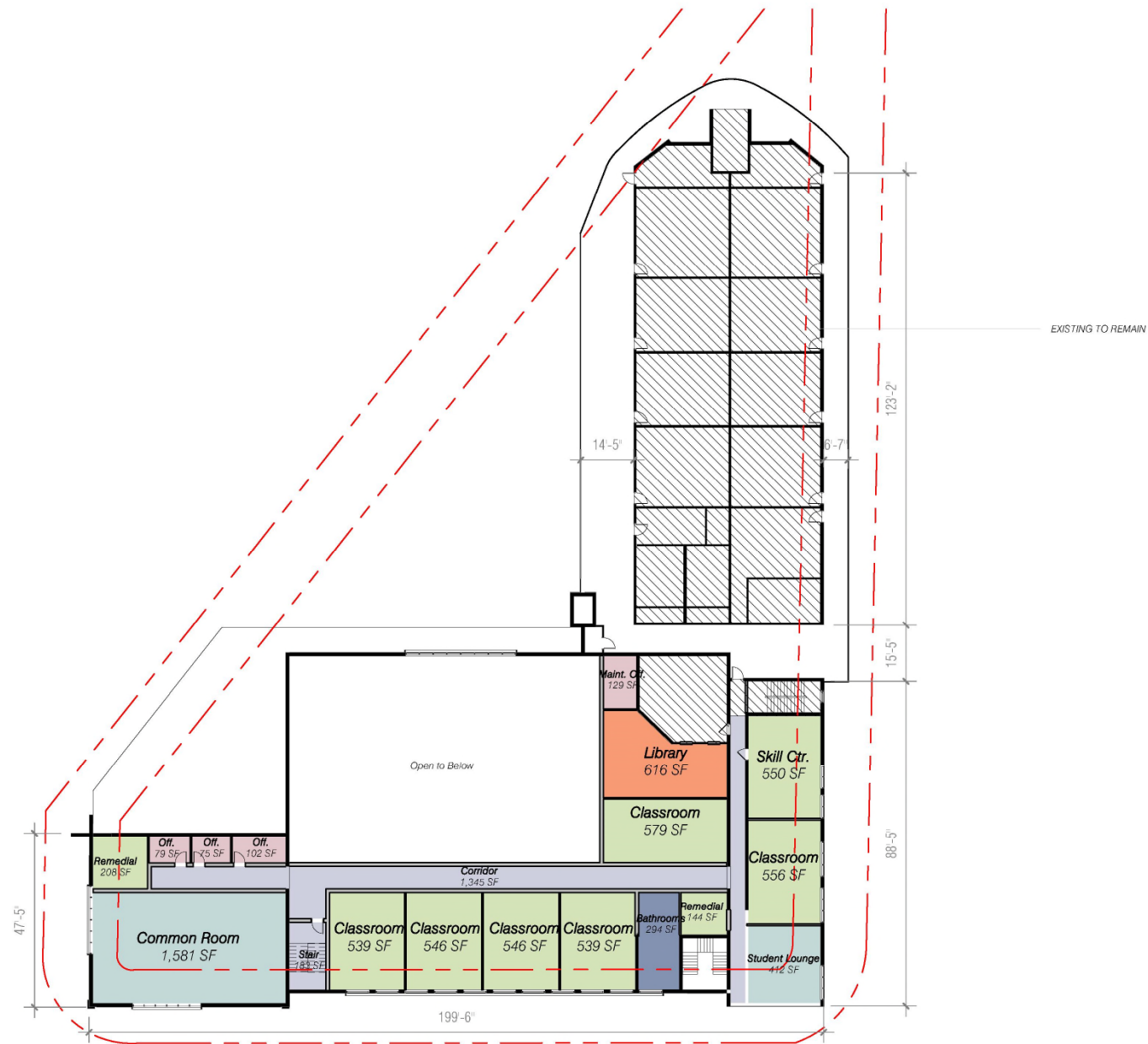
May 31, 2022

**ZYSCOVICH**  
ARCHITECTS

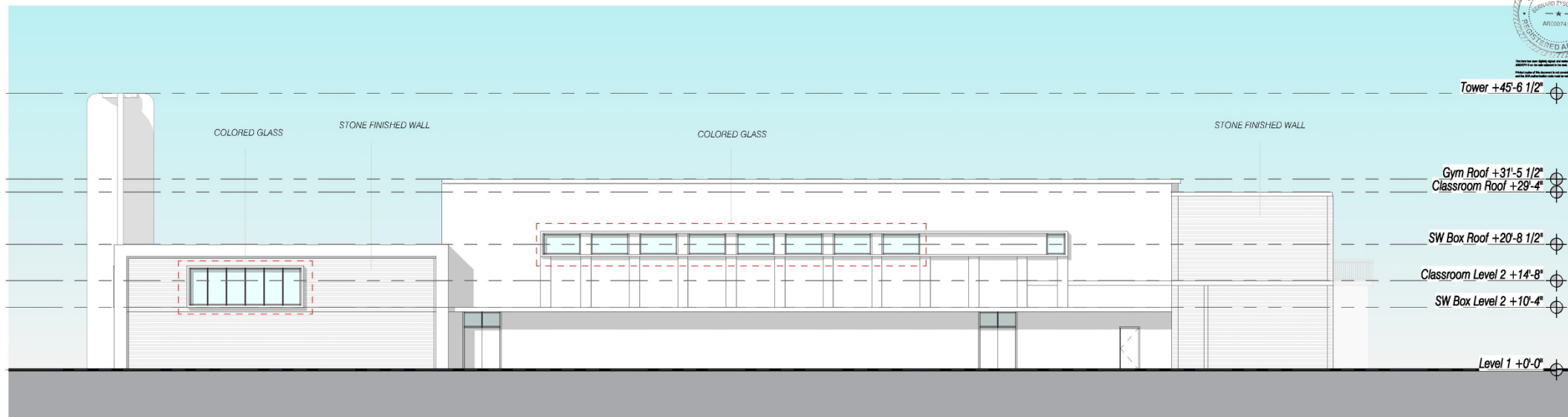
100 N Biscayne Blvd., 27th Fl  
Miami, FL 33132-2304  
t 305.372.5222 f 305.577.4521

e info@zyscovich.com  
w www.zyscovich.com

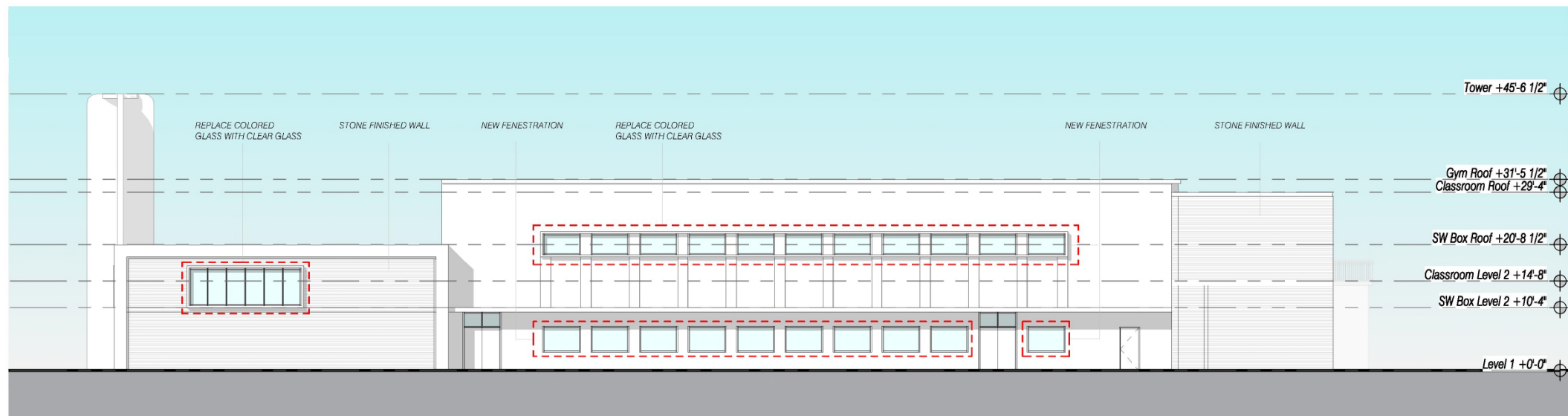








*Existing*



*Proposed*

## Yeshiva Elementary School

No copies, transmissions, reproductions, or electronic revisions of any portions of these drawings in whole or in part be made without the express written permission of Zyscovich Architects. All designs indicated in these drawings are property of Zyscovich Architects. All copyrights reserved © 2022.

South Elevations

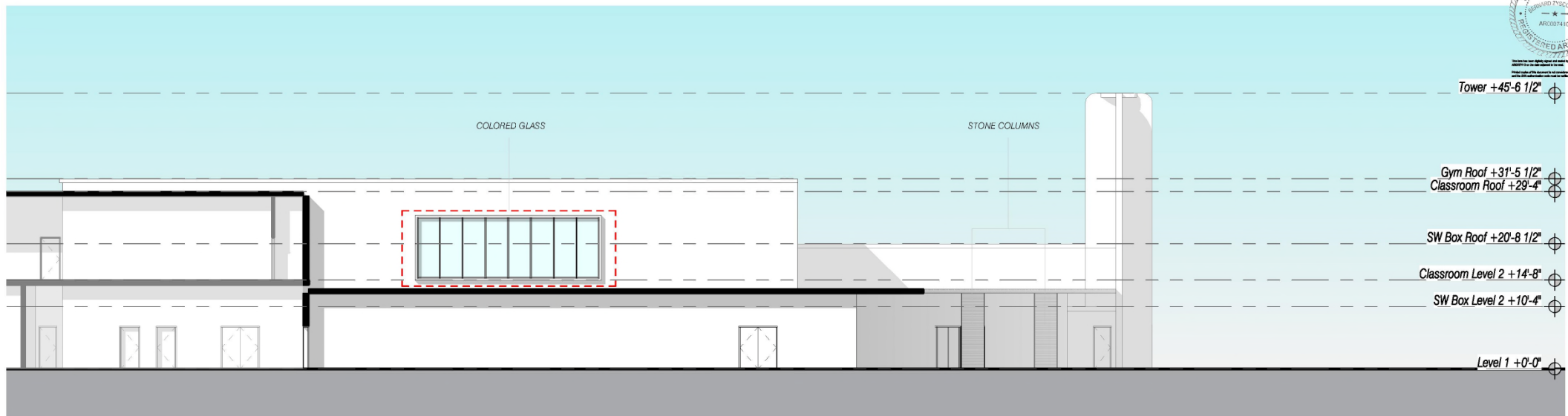
1/16" = 1'-0"

May 31, 2022

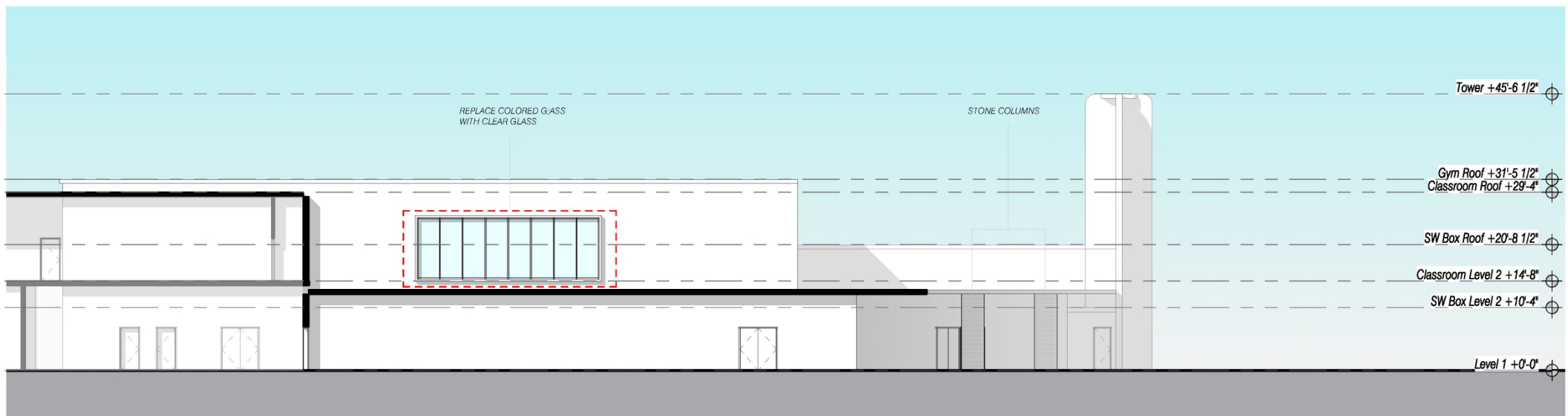
**ZYSCOVICH**  
ARCHITECTS

100 N Biscayne Blvd., 27th Fl  
Miami, FL 33132.2304  
t 305.372.5222 f 305.577.4521

e info@zyscovich.com  
w www.zyscovich.com



*Existing*



*Proposed*

## Yeshiva Elementary School

No copies, transmissions, reproductions, or electronic revisions of any portions of these drawings in whole or in part be made without the express written permission of Zyscovich Architects. All designs indicated in these drawings are property of Zyscovich Architects. All copyrights reserved © 2022.

North Elevations

1/16" = 1'-0"

May 31, 2022

**ZYSCOVICH**  
ARCHITECTS

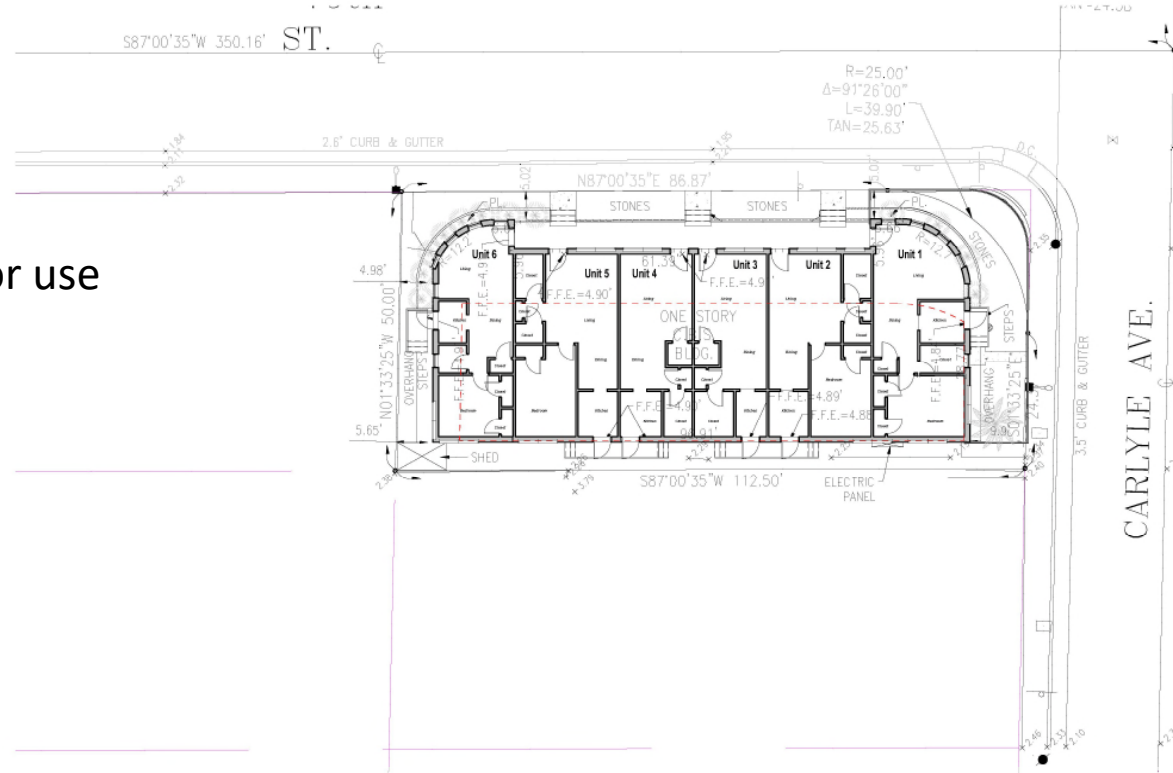
100 N Biscayne Blvd., 27th Fl.  
Miami, FL 33132.2304  
t 305.372.5222 f 305.577.4521

e info@zyscovich.com  
w www.zyscovich.com



# Staff Housing – 600 79 Street

- 6 units reserved for use by school faculty



# Pickup and Drop Off



Figure 8  
Dismissal Queuing Map  
Yeshiva Elementary School  
Miami Beach, Florida



# Thank You

200 S. Biscayne Boulevard  
Suite 300, Miami, FL 33131

[www.brzoninglaw.com](http://www.brzoninglaw.com)

305.374.5300 office  
305.377.6222 fax  
[Info@brzoninglaw.com](mailto:Info@brzoninglaw.com)