



# ONE ISLAND PARK

## DRB FINAL SUBMITTAL

SHEET LIST	
SHEET NAME	SHEET NUMBER
ARCHITECTURAL	
COVER	A0-00
SURVEY	A0-01
LOCATION MAP	A0-02
ZONING DATA	A0-03
CONTEXT - AERIAL VIEWS	A0-04
CONTEXT STUDY	A0-05
CONTEXT STREET AND AERIAL VIEWS	A0-06
SITE PLAN	A0-07
PROJECT DATA	A0-08
OVERALL OFFICE BUILDINGS LOWER LEVEL - FAR	A0-09
OVERALL OFFICE BUILDINGS LEVEL 01 - FAR	A0-10
OVERALL OFFICE BUILDINGS LEVEL 02 - FAR	A0-11
OVERALL OFFICE BUILDINGS LEVEL 03 - FAR	A0-12
OVERALL OFFICE BUILDINGS LEVEL 04 - FAR	A0-13
OVERALL OFFICE BUILDINGS LEVEL 05 - FAR	A0-14
OVERALL OFFICE BUILDINGS LEVEL 06 - FAR	A0-15
OVERALL OFFICE BUILDINGS ROOF LEVEL - FAR	A0-16
SITE ENTRANCE LEVEL 01 - FAR	A0-17
SITE ENTRANCE ROOF LEVEL - FAR	A0-18
LOT COVERAGE OPEN SPACE DIAGRAM	A0-19
RENDERED SITE PLAN	A1-00
RENDERED SITE PLAN ENTRANCE AREA	A1-00a
OVERALL OFFICE BUILDINGS LOWER LEVEL	A1-01
OVERALL OFFICE BUILDINGS LEVEL 01	A1-02
OVERALL OFFICE BUILDINGS LEVEL 02	A1-03
OVERALL OFFICE BUILDINGS LEVEL 03	A1-04
OVERALL OFFICE BUILDINGS LEVEL 04	A1-05
OVERALL OFFICE BUILDINGS LEVEL 05	A1-06
OVERALL OFFICE BUILDINGS LEVEL 06	A1-07
OVERALL OFFICE BUILDINGS ROOF LEVEL	A1-08
RENDERED ROOF PLAN	A1-09
SITE ENTRANCE LEVEL 01	A1-10
SITE ENTRANCE ROOF LEVEL	A1-11
PARKING GARAGE LEVEL 01	A1-13
PARKING GARAGE LEVEL 02	A1-14
PARKING GARAGE LEVEL 03	A1-15
PARKING GARAGE LEVEL 04	A1-16
PARKING GARAGE LEVEL 05	A1-17
PARKING GARAGE LEVEL 06	A1-18

SHEET LIST	
SHEET NAME	SHEET NUMBER
MACARTHUR CAUSEWAY ACCESS PLAN	A1-19
PEDESTRIAN PATH PLAN	A1-20
TRASH OPERATION PLAN	A1-21
LOADING OPERATION PLAN	A1-22
TYPICAL TRUCK MANEUVERING DIAGRAMS	A1-23
MANEUVERING DIAGRAM SU-30 TRUCK	A1-24
MANEUVERING DIAGRAM SU-30 TRUCK	A1-24B
MANEUVERING DIAGRAM SU-30 TRUCK	A1-25
MANEUVERING DIAGRAM FIRE TRUCK	A1-26
MANEUVERING DIAGRAM PASSENGER VEHICLE	A1-27
EAST ELEVATION	A2-01
EAST ELEVATION RENDERED	A2-02
NORTH ELEVATION	A2-03
NORTH ELEVATION RENDERED	A2-04
WEST ELEVATION	A2-05
WEST ELEVATION RENDERED	A2-06
SOUTH ELEVATION	A2-07
SOUTH ELEVATION RENDERED	A2-08
NORTH-EAST ELEVATION	A2-09
NORTH EAST ELEVATION RENDERED	A2-10
SIGNAGE ELEVATION	A2-11
SIGNAGE ELEVATION - RENDERED	A2-12
ROOF DECK SOUTH ELEVATIONS	A2-13
ROOF DECK SOUTH ELEVATIONS RENDERED	A2-14
GROUND LEVEL SOUTH ELEVATION	A2-15
GROUND LEVEL SOUTH ELEVATION RENDERED	A2-16
DIAGRAMMATIC CROSS-SECTION	A3-01
LONG SECTION	A3-02
SECTION THROUGH SEAWALL	A3-03
MATERIAL BOARD	A3-04
PROPOSED PARKING GARAGE STRUCTURE	A3-05
ROOF DECK TRELLIS STRUCTURE	A3-06
RENDERING	A4-01
RENDERING	A4-02
RENDERING	A4-03
RENDERING	A4-04
RENDERING	A4-05
RENDERING	A4-06
RENDERING	A4-07
DETAIL RENDERING	A5-01
LANDSCAPE	
GROUND LEVEL LANDSCAPE PLAN	L-1
GROUND LEVEL LANDSCAPE PLAN	L-2
LEVEL 05 AMENITY DECK LANDSCAPE PLAN	L-3
ROOF LEVEL LANDSCAPE PLAN	L-4
LANDSCAPE NOTES AND DETAILS	L-5

ARQUITECTONICA

2900 Oak Avenue, Miami, FL 33133  
T 305.372.1812 F 305.372.1175

ALL DESIGNS INDICATED IN THESE DRAWINGS ARE PROPERTY OF ARQUITECTONICA INTERNATIONAL CORP. NO COPIES, TRANSMISSIONS, REPRODUCTIONS OR ELECTRONIC MANIPULATION OF ANY PORTION OF THESE DRAWINGS IN THE WHOLE OR IN PART ARE TO BE MADE WITHOUT THE EXPRESS OF WRITTEN AUTHORIZATION OF ARQUITECTONICA INTERNATIONAL CORP. DESIGN INTENT SHOWN IS SUBJECT TO REVIEW AND APPROVAL OF ALL APPLICABLE LOCAL AND GOVERNMENTAL AUTHORITIES HAVING JURISDICTION. ALL COPYRIGHTS RESERVED © 2021. THE DATA INCLUDED IN THIS STUDY IS CONCEPTUAL IN NATURE AND WILL CONTINUE TO BE MODIFIED THROUGHOUT THE COURSE OF THE PROJECTS DEVELOPMENT WITH THE EVENTUAL INTEGRATION OF STRUCTURAL, MEP AND LIFE SAFETY SYSTEMS. AS THESE ARE FURTHER REFINED, THE NUMBERS WILL BE ADJUSTED ACCORDINGLY.

DRB FINAL SUBMITTAL  
120 MACARTHUR CAUSEWAY  
MIAMI BEACH, FL

COVER

SCALE:

DATE:  
06/29/2022

A0-00





## ARQUITECTONICA

2900 Oak Avenue, Miami, FL 33133  
T 305.372.1812 F 305.372.1175

ALL DESIGNS INDICATED IN THESE DRAWINGS ARE PROPERTY OF ARQUITECTONICA INTERNATIONAL CORP. NO COPIES, TRANSMISSIONS, REPRODUCTIONS OR ELECTRONIC MANIPULATION OF ANY PORTION OF THESE DRAWINGS IN THE WHOLE OR IN PART ARE TO BE MADE WITHOUT THE EXPRESS OF WRITTEN AUTHORIZATION OF ARQUITECTONICA INTERNATIONAL CORP. DESIGN INTENT SHOWN IS SUBJECT TO REVIEW AND APPROVAL OF ALL APPLICABLE LOCAL AND GOVERNMENTAL AUTHORITIES HAVING JURISDICTION. ALL COPYRIGHTS RESERVED © 2021. THE DATA INCLUDED IN THIS STUDY IS CONCEPTUAL IN NATURE AND WILL CONTINUE TO BE MODIFIED THROUGHOUT THE COURSE OF THE PROJECTS DEVELOPMENT WITH THE EVENTUAL INTEGRATION OF STRUCTURAL, MEP AND LIFE SAFETY SYSTEMS. AS THESE ARE FURTHER REFINED, THE NUMBERS WILL BE ADJUSTED ACCORDINGLY.

## DRB FINAL SUBMITTAL 120 MACARTHUR CAUSEWAY MIAMI BEACH, FL

## LOCATION MAP

SCALE:

DATE:  
03/28/2022

**A0-02**





**ARQUITECTONICA**

2900 Oak Avenue, Miami, FL 33133  
T 305.372.1812 F 305.372.1175

ALL DESIGNS INDICATED IN THESE DRAWINGS ARE PROPERTY OF ARQUITECTONICA INTERNATIONAL CORP. NO COPIES, TRANSMISSIONS, REPRODUCTIONS OR ELECTRONIC MANIPULATION OF ANY PORTION OF THESE DRAWINGS IN THE WHOLE OR IN PART ARE TO BE MADE WITHOUT THE EXPRESS OF WRITTEN AUTHORIZATION OF ARQUITECTONICA INTERNATIONAL CORP. DESIGN INTENT SHOWN IS SUBJECT TO REVIEW AND APPROVAL OF ALL APPLICABLE LOCAL AND GOVERNMENTAL AUTHORITIES HAVING JURISDICTION. ALL COPYRIGHTS RESERVED © 2021. THE DATA INCLUDED IN THIS STUDY IS CONCEPTUAL IN NATURE AND WILL CONTINUE TO BE MODIFIED THROUGHOUT THE COURSE OF THE PROJECTS DEVELOPMENT WITH THE EVENTUAL INTEGRATION OF STRUCTURAL, MEP AND LIFE SAFETY SYSTEMS. AS THESE ARE FURTHER REFINED, THE NUMBERS WILL BE ADJUSTED ACCORDINGLY.

DRB FINAL SUBMITTAL  
120 MACARTHUR CAUSEWAY  
MIAMI BEACH, FL

RENDERING

SCALE:

DATE:  
06/29/2022

**A4-01**





**ARQUITECTONICA**

2900 Oak Avenue, Miami, FL 33133  
T 305.372.1812 F 305.372.1175

ALL DESIGNS INDICATED IN THESE DRAWINGS ARE PROPERTY OF ARQUITECTONICA INTERNATIONAL CORP. NO COPIES, TRANSMISSIONS, REPRODUCTIONS OR ELECTRONIC MANIPULATION OF ANY PORTION OF THESE DRAWINGS IN THE WHOLE OR IN PART ARE TO BE MADE WITHOUT THE EXPRESS OF WRITTEN AUTHORIZATION OF ARQUITECTONICA INTERNATIONAL CORP. DESIGN INTENT SHOWN IS SUBJECT TO REVIEW AND APPROVAL OF ALL APPLICABLE LOCAL AND GOVERNMENTAL AUTHORITIES HAVING JURISDICTION. ALL COPYRIGHTS RESERVED © 2021. THE DATA INCLUDED IN THIS STUDY IS CONCEPTUAL IN NATURE AND WILL CONTINUE TO BE MODIFIED THROUGHOUT THE COURSE OF THE PROJECTS DEVELOPMENT WITH THE EVENTUAL INTEGRATION OF STRUCTURAL, MEP AND LIFE SAFETY SYSTEMS. AS THESE ARE FURTHER REFINED, THE NUMBERS WILL BE ADJUSTED ACCORDINGLY.

DRB FINAL SUBMITTAL  
120 MACARTHUR CAUSEWAY  
MIAMI BEACH, FL

RENDERING

SCALE:

DATE:  
06/29/2022

**A4-02**





**ARQUITECTONICA**

2900 Oak Avenue, Miami, FL 33133  
T 305.372.1812 F 305.372.1175

ALL DESIGNS INDICATED IN THESE DRAWINGS ARE PROPERTY OF ARQUITECTONICA INTERNATIONAL CORP. NO COPIES, TRANSMISSIONS, REPRODUCTIONS OR ELECTRONIC MANIPULATION OF ANY PORTION OF THESE DRAWINGS IN THE WHOLE OR IN PART ARE TO BE MADE WITHOUT THE EXPRESS OF WRITTEN AUTHORIZATION OF ARQUITECTONICA INTERNATIONAL CORP. DESIGN INTENT SHOWN IS SUBJECT TO REVIEW AND APPROVAL OF ALL APPLICABLE LOCAL AND GOVERNMENTAL AUTHORITIES HAVING JURISDICTION. ALL COPYRIGHTS RESERVED © 2021. THE DATA INCLUDED IN THIS STUDY IS CONCEPTUAL IN NATURE AND WILL CONTINUE TO BE MODIFIED THROUGHOUT THE COURSE OF THE PROJECTS DEVELOPMENT WITH THE EVENTUAL INTEGRATION OF STRUCTURAL, MEP AND LIFE SAFETY SYSTEMS. AS THESE ARE FURTHER REFINED, THE NUMBERS WILL BE ADJUSTED ACCORDINGLY.

DRB FINAL SUBMITTAL  
120 MACARTHUR CAUSEWAY  
MIAMI BEACH, FL

RENDERING

SCALE:

DATE:  
06/29/2022

**A4-03**





**ARQUITECTONICA**

2900 Oak Avenue, Miami, FL 33133  
T 305.372.1812 F 305.372.1175

ALL DESIGNS INDICATED IN THESE DRAWINGS ARE PROPERTY OF ARQUITECTONICA INTERNATIONAL CORP. NO COPIES, TRANSMISSIONS, REPRODUCTIONS OR ELECTRONIC MANIPULATION OF ANY PORTION OF THESE DRAWINGS IN THE WHOLE OR IN PART ARE TO BE MADE WITHOUT THE EXPRESS OF WRITTEN AUTHORIZATION OF ARQUITECTONICA INTERNATIONAL CORP. DESIGN INTENT SHOWN IS SUBJECT TO REVIEW AND APPROVAL OF ALL APPLICABLE LOCAL AND GOVERNMENTAL AUTHORITIES HAVING JURISDICTION. ALL COPYRIGHTS RESERVED © 2021. THE DATA INCLUDED IN THIS STUDY IS CONCEPTUAL IN NATURE AND WILL CONTINUE TO BE MODIFIED THROUGHOUT THE COURSE OF THE PROJECTS DEVELOPMENT WITH THE EVENTUAL INTEGRATION OF STRUCTURAL, MEP AND LIFE SAFETY SYSTEMS. AS THESE ARE FURTHER REFINED, THE NUMBERS WILL BE ADJUSTED ACCORDINGLY.

DRB FINAL SUBMITTAL  
120 MACARTHUR CAUSEWAY  
MIAMI BEACH, FL

RENDERING

SCALE:

DATE:  
06/29/2022

**A4-04**





**ARQUITECTONICA**

2900 Oak Avenue, Miami, FL 33133  
T 305.372.1812 F 305.372.1175

ALL DESIGNS INDICATED IN THESE DRAWINGS ARE PROPERTY OF ARQUITECTONICA INTERNATIONAL CORP. NO COPIES, TRANSMISSIONS, REPRODUCTIONS OR ELECTRONIC MANIPULATION OF ANY PORTION OF THESE DRAWINGS IN THE WHOLE OR IN PART ARE TO BE MADE WITHOUT THE EXPRESS OF WRITTEN AUTHORIZATION OF ARQUITECTONICA INTERNATIONAL CORP. DESIGN INTENT SHOWN IS SUBJECT TO REVIEW AND APPROVAL OF ALL APPLICABLE LOCAL AND GOVERNMENTAL AUTHORITIES HAVING JURISDICTION. ALL COPYRIGHTS RESERVED © 2021. THE DATA INCLUDED IN THIS STUDY IS CONCEPTUAL IN NATURE AND WILL CONTINUE TO BE MODIFIED THROUGHOUT THE COURSE OF THE PROJECTS DEVELOPMENT WITH THE EVENTUAL INTEGRATION OF STRUCTURAL, MEP AND LIFE SAFETY SYSTEMS. AS THESE ARE FURTHER REFINED, THE NUMBERS WILL BE ADJUSTED ACCORDINGLY.

DRB FINAL SUBMITTAL  
120 MACARTHUR CAUSEWAY  
MIAMI BEACH, FL

RENDERING

SCALE:

DATE:  
06/29/2022

**A4-05**





**ARQUITECTONICA**

2900 Oak Avenue, Miami, FL 33133  
T 305.372.1812 F 305.372.1175  
ALL DESIGNS INDICATED IN THESE DRAWINGS ARE PROPERTY OF ARQUITECTONICA INTERNATIONAL CORP. NO COPIES, TRANSMISSIONS, REPRODUCTIONS OR ELECTRONIC MANIPULATION OF ANY PORTION OF THESE DRAWINGS IN THE WHOLE OR IN PART ARE TO BE MADE WITHOUT THE EXPRESS OF WRITTEN AUTHORIZATION OF ARQUITECTONICA INTERNATIONAL CORP. DESIGN INTENT SHOWN IS SUBJECT TO REVIEW AND APPROVAL OF ALL APPLICABLE LOCAL AND GOVERNMENTAL AUTHORITIES HAVING JURISDICTION. ALL COPYRIGHTS RESERVED © 2021. THE DATA INCLUDED IN THIS STUDY IS CONCEPTUAL IN NATURE AND WILL CONTINUE TO BE MODIFIED THROUGHOUT THE COURSE OF THE PROJECTS DEVELOPMENT WITH THE EVENTUAL INTEGRATION OF STRUCTURAL, MEP AND LIFE SAFETY SYSTEMS. AS THESE ARE FURTHER REFINED, THE NUMBERS WILL BE ADJUSTED ACCORDINGLY.

DRB FINAL SUBMITTAL  
120 MACARTHUR CAUSEWAY  
MIAMI BEACH, FL

RENDERING

SCALE:

DATE:  
06/29/2022

**A4-06**





**ARQUITECTONICA**

2900 Oak Avenue, Miami, FL 33133  
T 305.372.1812 F 305.372.1175

ALL DESIGNS INDICATED IN THESE DRAWINGS ARE PROPERTY OF ARQUITECTONICA INTERNATIONAL CORP. NO COPIES, TRANSMISSIONS, REPRODUCTIONS OR ELECTRONIC MANIPULATION OF ANY PORTION OF THESE DRAWINGS IN THE WHOLE OR IN PART ARE TO BE MADE WITHOUT THE EXPRESS OF WRITTEN AUTHORIZATION OF ARQUITECTONICA INTERNATIONAL CORP. DESIGN INTENT SHOWN IS SUBJECT TO REVIEW AND APPROVAL OF ALL APPLICABLE LOCAL AND GOVERNMENTAL AUTHORITIES HAVING JURISDICTION. ALL COPYRIGHTS RESERVED © 2021. THE DATA INCLUDED IN THIS STUDY IS CONCEPTUAL IN NATURE AND WILL CONTINUE TO BE MODIFIED THROUGHOUT THE COURSE OF THE PROJECTS DEVELOPMENT WITH THE EVENTUAL INTEGRATION OF STRUCTURAL, MEP AND LIFE SAFETY SYSTEMS. AS THESE ARE FURTHER REFINED, THE NUMBERS WILL BE ADJUSTED ACCORDINGLY.

DRB FINAL SUBMITTAL  
120 MACARTHUR CAUSEWAY  
MIAMI BEACH, FL

RENDERING

SCALE:

DATE:  
06/29/2022

**A4-07**



TYP. ROOF TRELLIS  
WHITE ALUMINUM FINISH

TPO ROOFING  
WHITE FINISH

MECHANICAL ENCLOSURE  
STUCCO SCORE LINES  
TO MATCH OFFICE  
GLAZING

TYP. ROOF TERRACE

TYP OFFICE GLAZING  
WINDOW WALL-GRAY  
GLASS

OPERABLE AWNING  
WINDOW TYP. FOR  
VENTILATION

EXTERIOR  
COVERED PLAZA  
PATIO AREA

TYP. LANDSCAPE  
AREAS

TYP. OFFICE GLAZING  
WINDOW WALL-GRAY GLASS

TYP. CONCRETE FINISH  
WHITE STUCCO

TYP. CONCRETE SLAB FINISH -  
WHITE PAINT

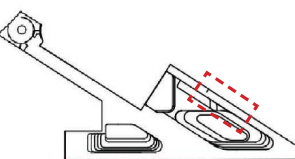
TYP. GARAGE SCREENING  
STRETCHED TENSILE FABRIC

VERTICAL SCREEN ATTACHMENTS  
ALUMINUM EXTRUSION

TYP. CONCRETE SLAB FINISH -  
WHITE PAINT

TYP. WALL - EXPOSED CONCRETE  
WITH HORIZONTAL SCORE LINES

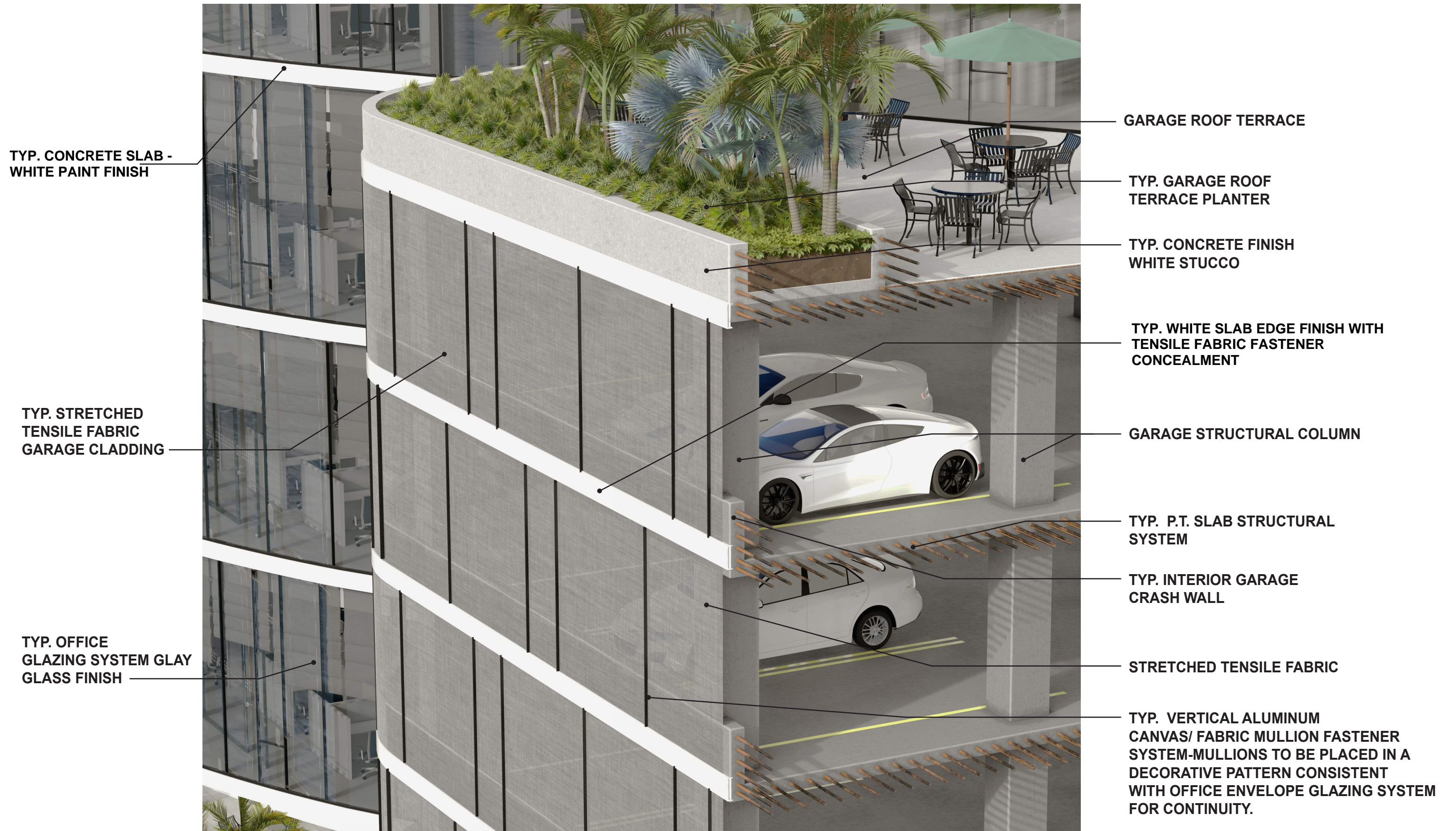
**BUILDING SECTION VIGNETTE**  
120 MACARTHUR CAUSEWAY MIAMI BEACH, FL 33139



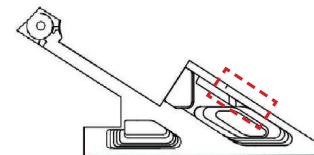
KEY PLAN

**ARQUITECTONICA**





**GARAGE SECTION VIGNETTE**  
120 MACARTHUR CAUSEWAY MIAMI BEACH, FL 33139



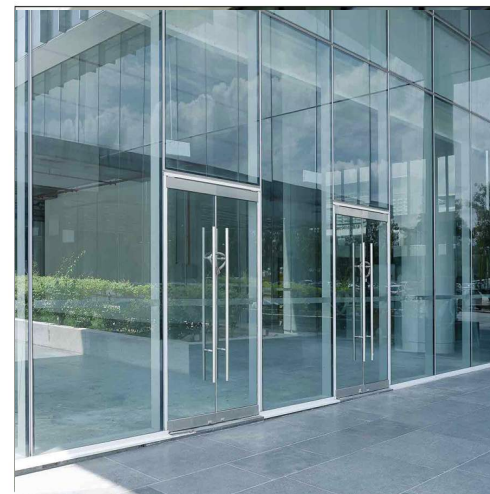
KEY PLAN

**ARQUITECTONICA**

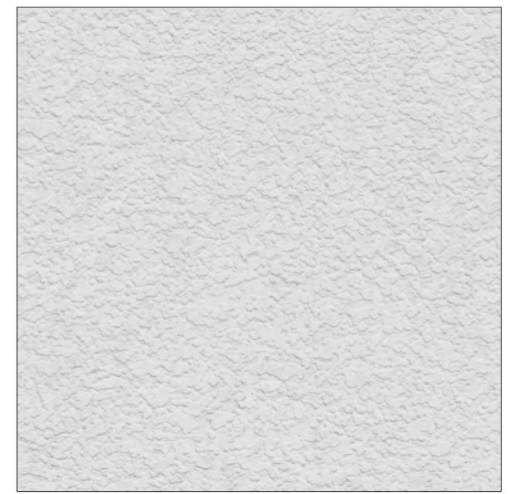




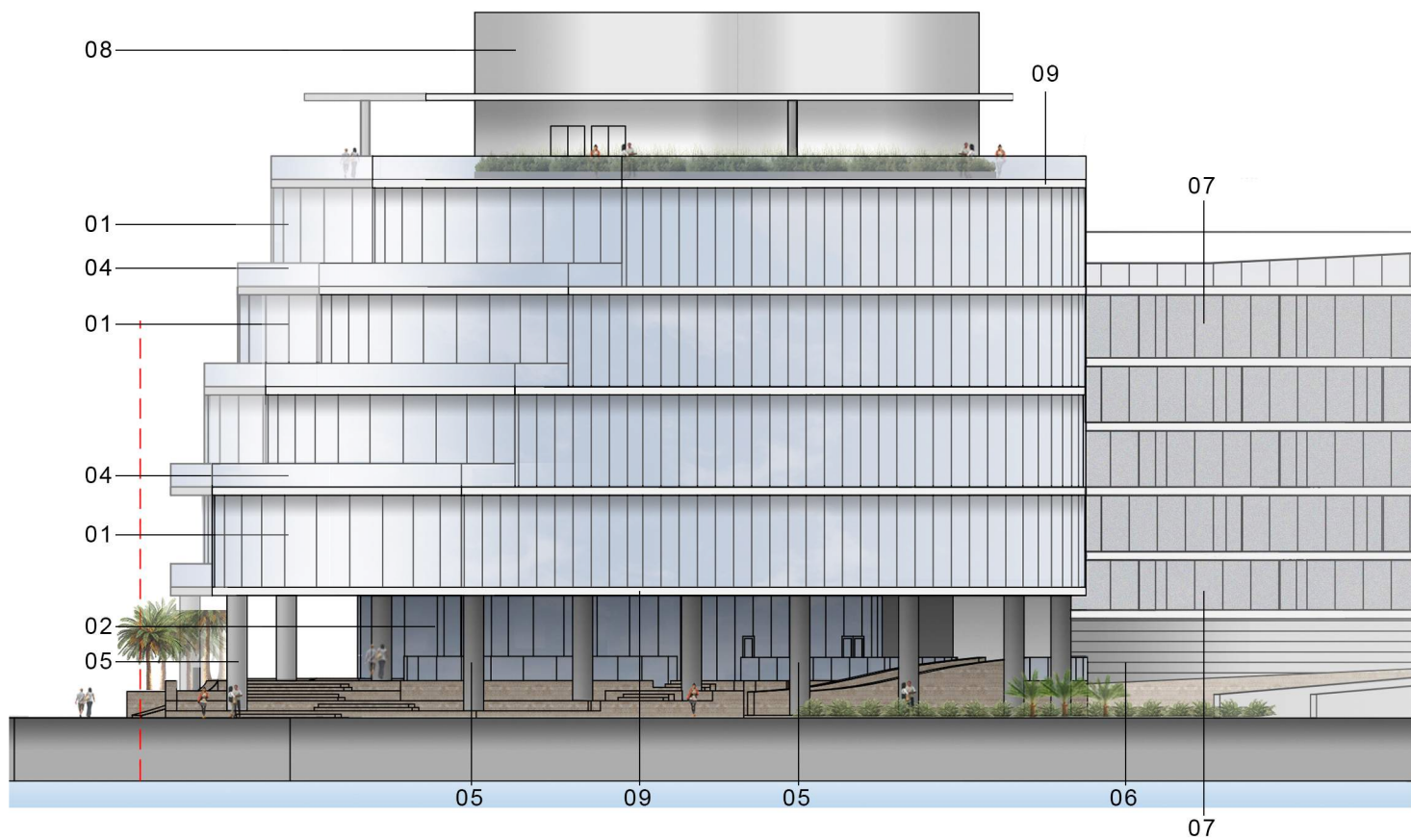
01 - WINDOW WALL SYSTEM



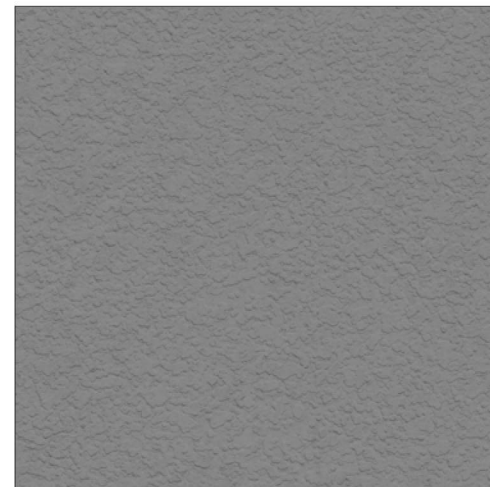
02 - GROUND LEVEL GLAZED FACADE



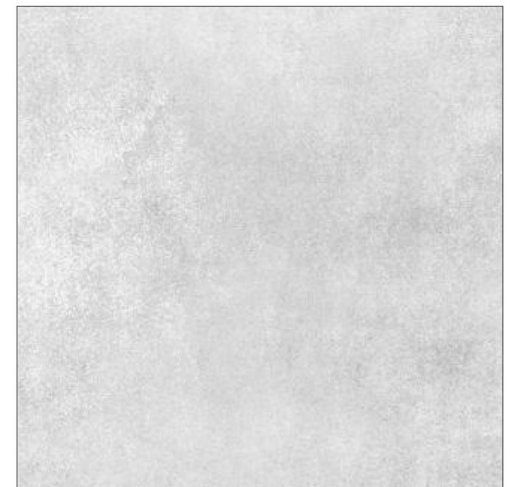
03 - WHITE STUCCO



04 - GLASS RAILING



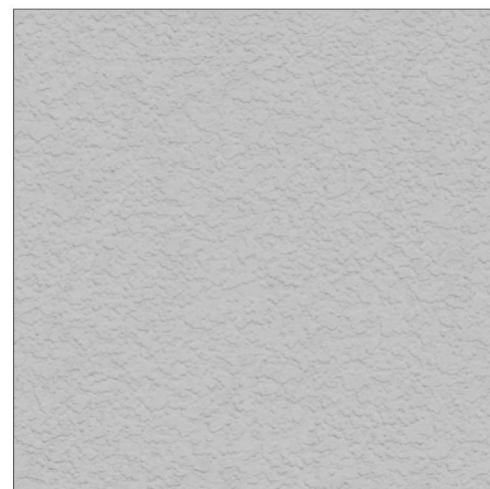
05 - SMOOTH DARK GRAY STUCCO



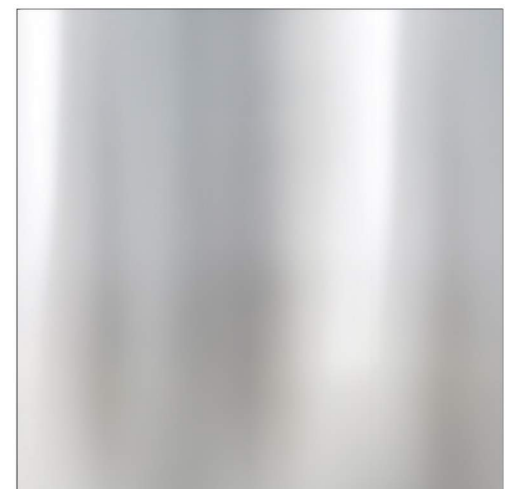
06 - EXPOSED CONCRETE



07 - TENSILE FABRIC



08 - SMOOTH LIGHT GRAY STUCCO



09 - SLAB EDGE - WHITE PAINT

## ARQUITECTONICA

2900 Oak Avenue, Miami, FL 33133  
T 305.372.1812 F 305.372.1175

ALL DESIGNS INDICATED IN THESE DRAWINGS ARE PROPERTY OF ARQUITECTONICA INTERNATIONAL CORP. NO COPIES, TRANSMISSIONS, REPRODUCTIONS OR ELECTRONIC MANIPULATION OF ANY PORTION OF THESE DRAWINGS IN THE WHOLE OR IN PART ARE TO BE MADE WITHOUT THE EXPRESS WRITTEN AUTHORIZATION OF ARQUITECTONICA INTERNATIONAL CORP. DESIGN INTENT SHOWN IS SUBJECT TO REVIEW AND APPROVAL OF ALL APPLICABLE LOCAL AND GOVERNMENTAL AUTHORITIES HAVING JURISDICTION. ALL COPYRIGHTS RESERVED © 2019. THE DATA INCLUDED IN THIS STUDY IS CONCEPTUAL IN NATURE AND WILL CONTINUE TO BE MODIFIED THROUGHOUT THE COURSE OF THE PROJECTS DEVELOPMENT WITH THE EVENTUAL INTEGRATION OF STRUCTURAL, MEP AND LIFE SAFETY SYSTEMS. AS THESE ARE FURTHER REFINED, THE NUMBERS WILL BE ADJUSTED ACCORDINGLY.

## DRB FINAL SUBMITTAL 120 MACARTHUR CAUSEWAY MIAMI BEACH, FL, 33139

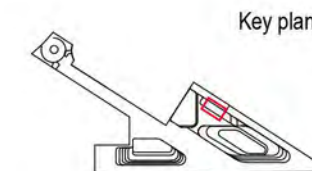
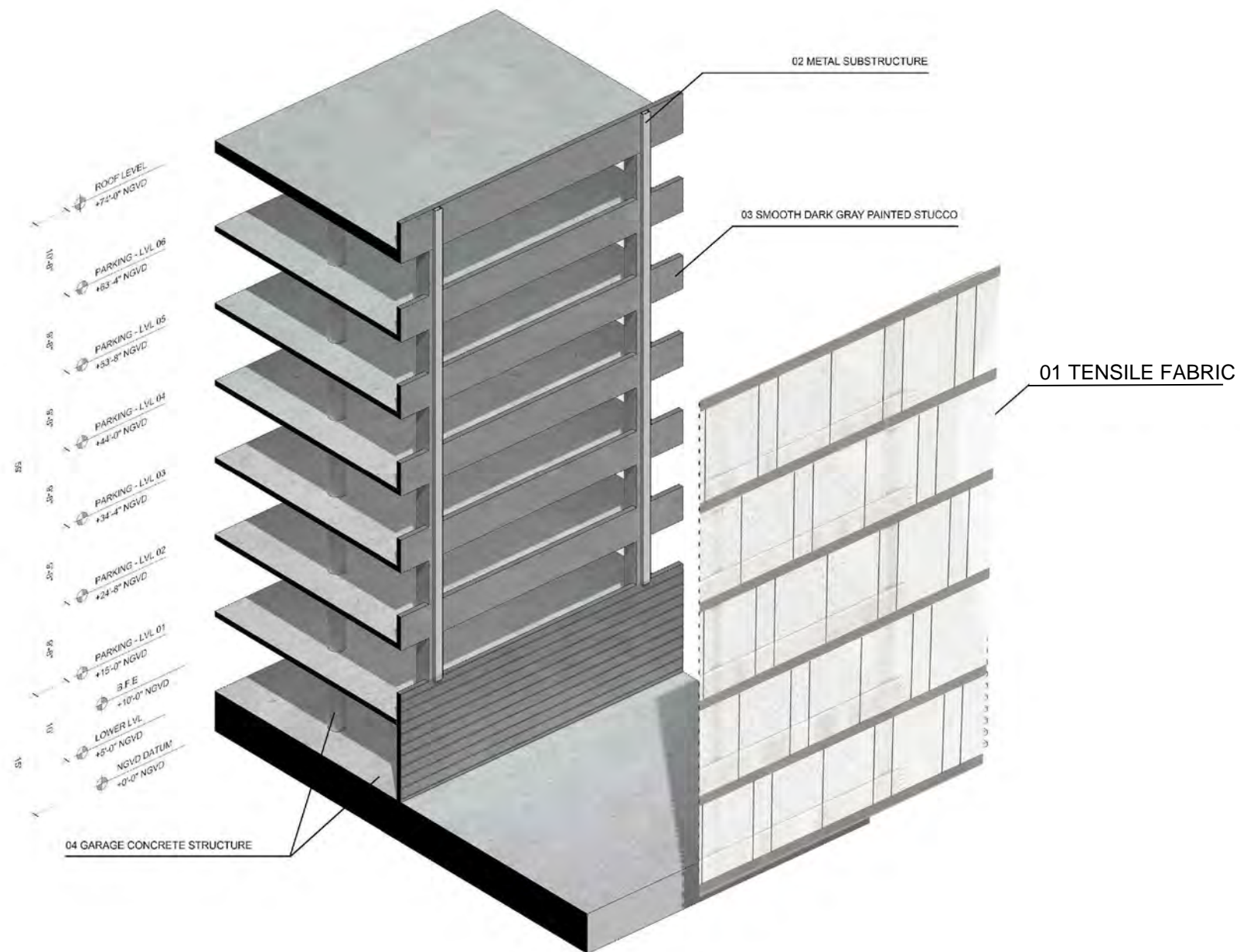
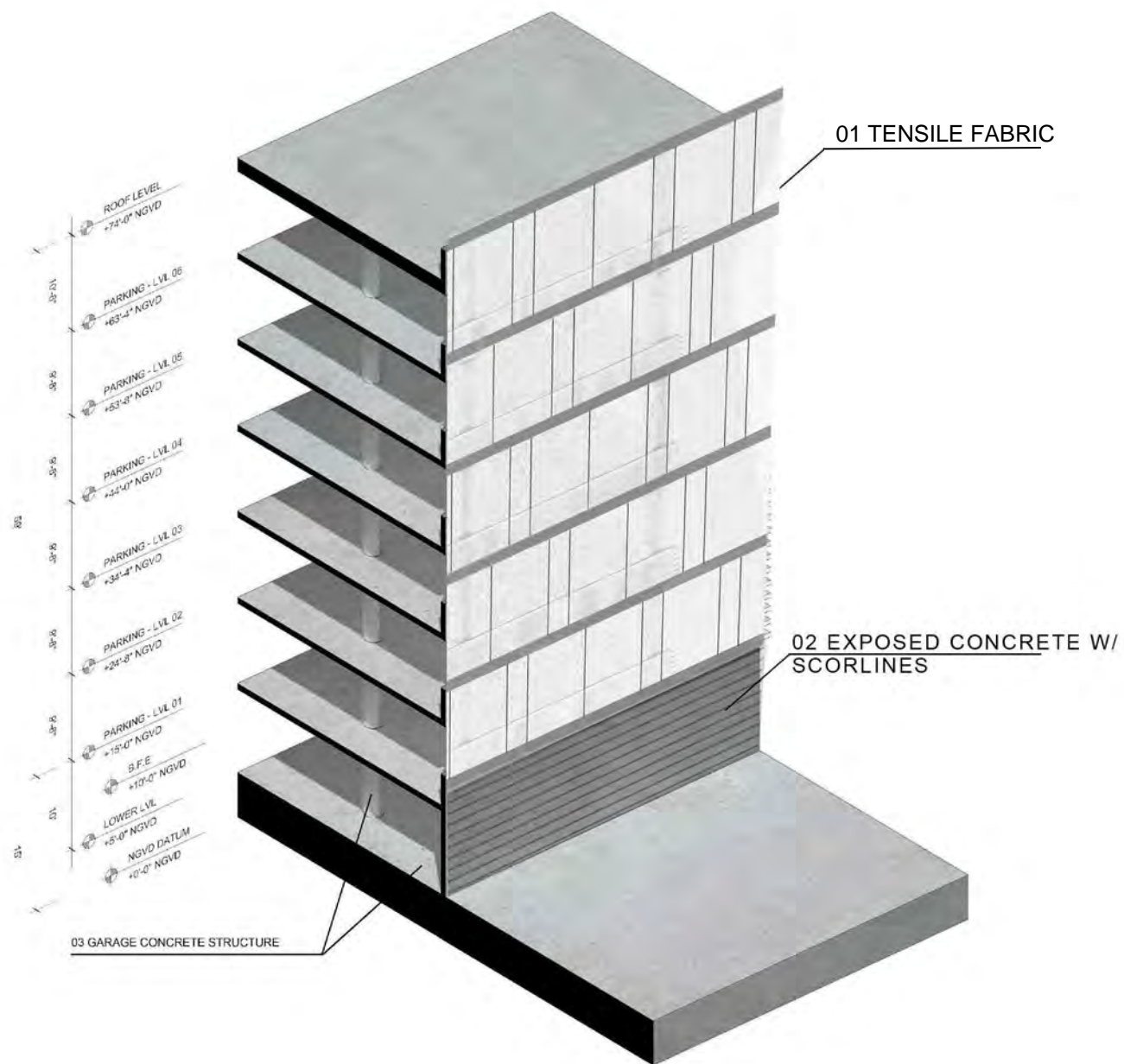
## MATERIAL BOARD

SCALE:

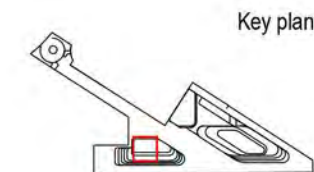
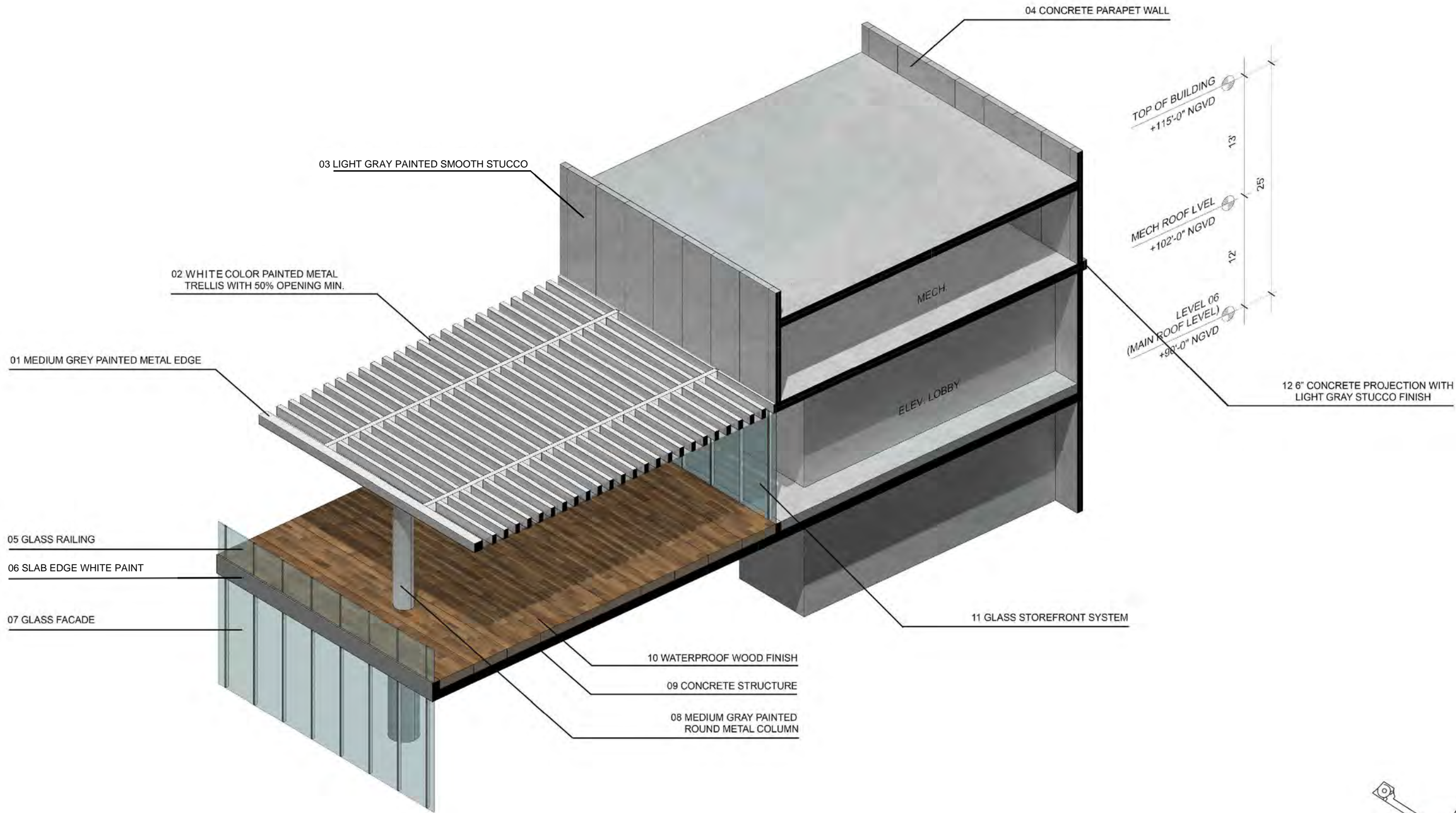
DATE:  
06/29/2022

**A3-04**



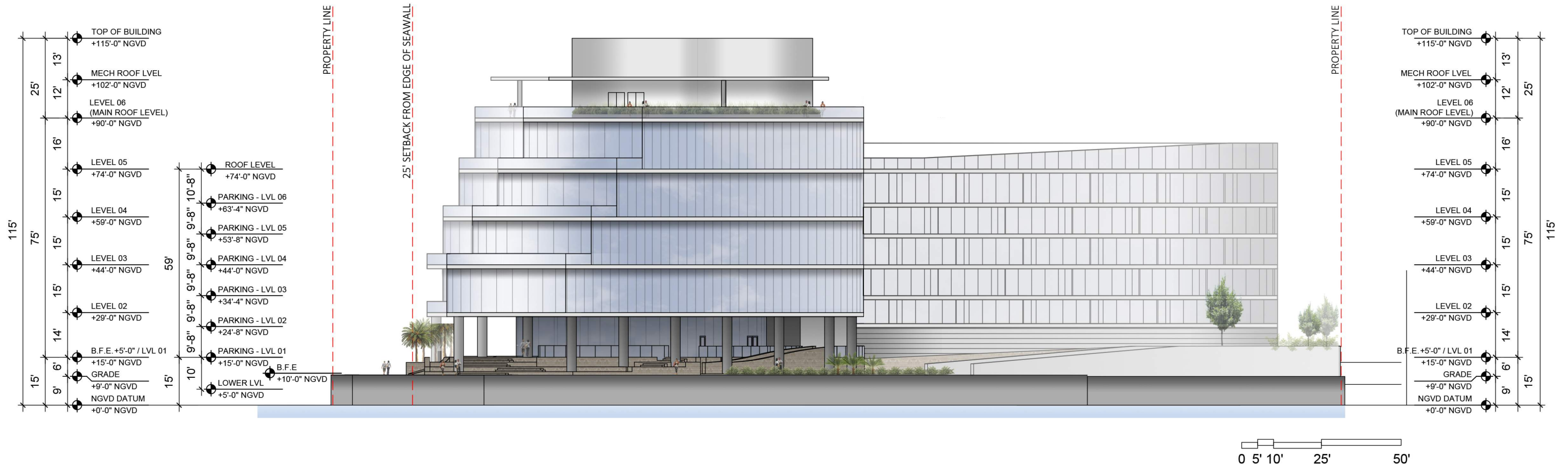






Key plan





## ARQUITECTONICA

2900 Oak Avenue, Miami, FL 33133  
T 305.372.1812 F 305.372.1175

ALL DESIGNS INDICATED IN THESE DRAWINGS ARE PROPERTY OF ARQUITECTONICA INTERNATIONAL CORP. NO COPIES, TRANSMISSIONS, REPRODUCTIONS OR ELECTRONIC MANIPULATION OF ANY PORTION OF THESE DRAWINGS IN THE WHOLE OR IN PART ARE TO BE MADE WITHOUT THE EXPRESS OF WRITTEN AUTHORIZATION OF ARQUITECTONICA INTERNATIONAL CORP. DESIGN INTENT SHOWN IS SUBJECT TO REVIEW AND APPROVAL OF ALL APPLICABLE LOCAL AND GOVERNMENTAL AUTHORITIES HAVING JURISDICTION. ALL COPYRIGHTS RESERVED © 2021. THE DATA INCLUDED IN THIS STUDY IS CONCEPTUAL IN NATURE AND WILL CONTINUE TO BE MODIFIED THROUGHOUT THE COURSE OF THE PROJECTS DEVELOPMENT WITH THE EVENTUAL INTEGRATION OF STRUCTURAL, MEP AND LIFE SAFETY SYSTEMS. AS THESE ARE FURTHER REFINED, THE NUMBERS WILL BE ADJUSTED ACCORDINGLY.

DRB FINAL SUBMITTAL  
120 MACARTHUR CAUSEWAY  
MIAMI BEACH, FL

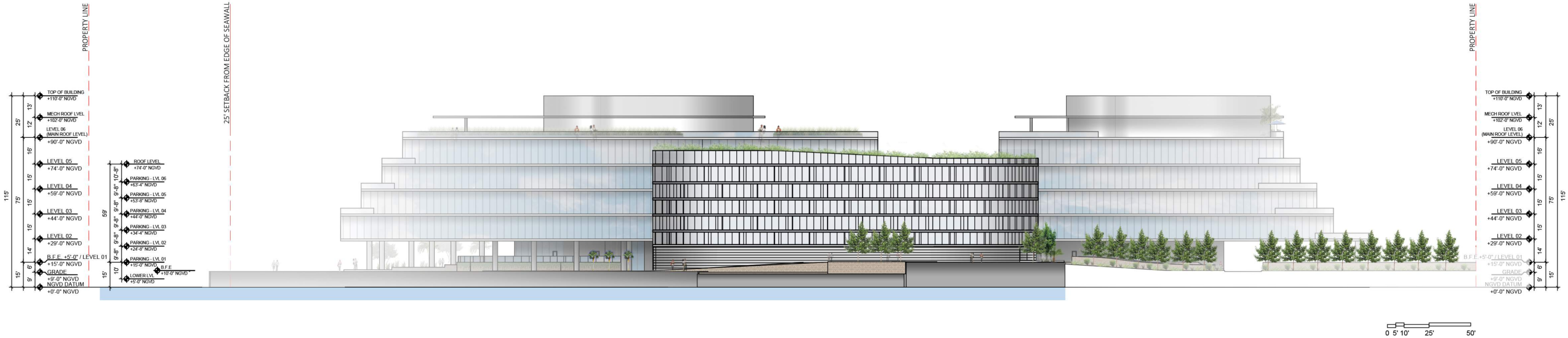
EAST ELEVATION

SCALE: 1"=30'

DATE:  
06/29/2022

**A2-01**





**ARQUITECTONICA**

2900 Oak Avenue, Miami, FL 33133  
T 305.372.1812 F 305.372.1175

ALL DESIGNS INDICATED IN THESE DRAWINGS ARE PROPERTY OF ARQUITECTONICA INTERNATIONAL CORP. NO COPIES, TRANSMISSIONS, REPRODUCTIONS OR ELECTRONIC MANIPULATION OF ANY PORTION OF THESE DRAWINGS IN THE WHOLE OR IN PART ARE TO BE MADE WITHOUT THE EXPRESS OF WRITTEN AUTHORIZATION OF ARQUITECTONICA INTERNATIONAL CORP. DESIGN INTENT SHOWN IS SUBJECT TO REVIEW AND APPROVAL OF ALL APPLICABLE LOCAL AND GOVERNMENTAL AUTHORITIES HAVING JURISDICTION. ALL COPYRIGHTS RESERVED © 2021. THE DATA INCLUDED IN THIS STUDY IS CONCEPTUAL IN NATURE AND WILL CONTINUE TO BE MODIFIED THROUGHOUT THE COURSE OF THE PROJECTS DEVELOPMENT WITH THE EVENTUAL INTEGRATION OF STRUCTURAL, MEP AND LIFE SAFETY SYSTEMS. AS THESE ARE FURTHER REFINED, THE NUMBERS WILL BE ADJUSTED ACCORDINGLY.

DRB FINAL SUBMITTAL  
120 MACARTHUR CAUSEWAY  
MIAMI BEACH, FL

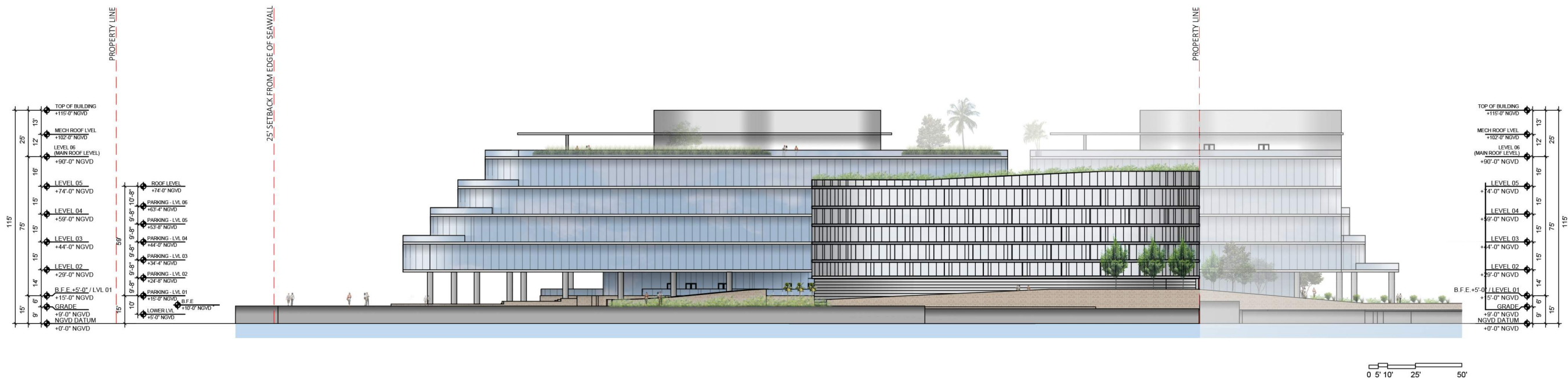
NORTH ELEVATION

SCALE: 1"=60'

DATE:  
06/29/2022

**A2-03**





## ARQUITECTONICA

2900 Oak Avenue, Miami, FL 33133  
T 305.372.1812 F 305.372.1175

ALL DESIGNS INDICATED IN THESE DRAWINGS ARE PROPERTY OF ARQUITECTONICA INTERNATIONAL CORP. NO COPIES, TRANSMISSIONS, REPRODUCTIONS OR ELECTRONIC MANIPULATION OF ANY PORTION OF THESE DRAWINGS IN THE WHOLE OR IN PART ARE TO BE MADE WITHOUT THE EXPRESS OF WRITTEN AUTHORIZATION OF ARQUITECTONICA INTERNATIONAL CORP. DESIGN INTENT SHOWN IS SUBJECT TO REVIEW AND APPROVAL OF ALL APPLICABLE LOCAL AND GOVERNMENTAL AUTHORITIES HAVING JURISDICTION. ALL COPYRIGHTS RESERVED © 2021. THE DATA INCLUDED IN THIS STUDY IS CONCEPTUAL IN NATURE AND WILL CONTINUE TO BE MODIFIED THROUGHOUT THE COURSE OF THE PROJECTS DEVELOPMENT WITH THE EVENTUAL INTEGRATION OF STRUCTURAL, MEP AND LIFE SAFETY SYSTEMS. AS THESE ARE FURTHER REFINED, THE NUMBERS WILL BE ADJUSTED ACCORDINGLY.

DRB FINAL SUBMITTAL  
120 MACARTHUR CAUSEWAY  
MIAMI BEACH, FL

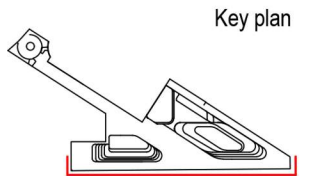
NORTH-EAST ELEVATION

SCALE: 1"=60'

DATE:  
06/29/2022

**A2-09**





**ARQUITECTONICA**

2900 Oak Avenue, Miami, FL 33133  
T 305.372.1812 F 305.372.1175

ALL DESIGNS INDICATED IN THESE DRAWINGS ARE PROPERTY OF ARQUITECTONICA INTERNATIONAL CORP. NO COPIES, TRANSMISSIONS, REPRODUCTIONS OR ELECTRONIC MANIPULATION OF ANY PORTION OF THESE DRAWINGS IN THE WHOLE OR IN PART ARE TO BE MADE WITHOUT THE EXPRESS OF WRITTEN AUTHORIZATION OF ARQUITECTONICA INTERNATIONAL CORP. DESIGN INTENT SHOWN IS SUBJECT TO REVIEW AND APPROVAL OF ALL APPLICABLE LOCAL AND GOVERNMENTAL AUTHORITIES HAVING JURISDICTION. ALL COPYRIGHTS RESERVED © 2021. THE DATA INCLUDED IN THIS STUDY IS CONCEPTUAL IN NATURE AND WILL CONTINUE TO BE MODIFIED THROUGHOUT THE COURSE OF THE PROJECTS DEVELOPMENT WITH THE EVENTUAL INTEGRATION OF STRUCTURAL, MEP AND LIFE SAFETY SYSTEMS. AS THESE ARE FURTHER REFINED, THE NUMBERS WILL BE ADJUSTED ACCORDINGLY.

DRB FINAL SUBMITTAL  
120 MACARTHUR CAUSEWAY  
MIAMI BEACH, FL

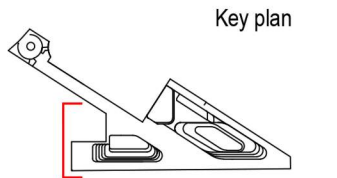
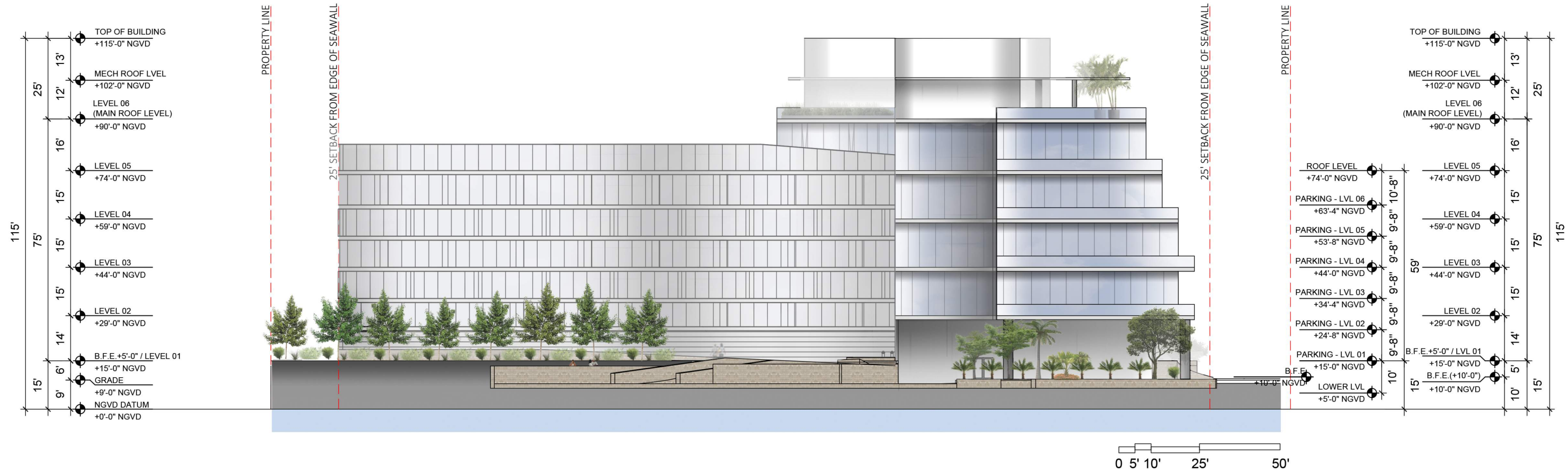
SOUTH ELEVATION

SCALE: 1"=60'

DATE:  
06/29/2022

**A2-07**





**ARQUITECTONICA**

2900 Oak Avenue, Miami, FL 33133  
T 305.372.1812 F 305.372.1175

ALL DESIGNS INDICATED IN THESE DRAWINGS ARE PROPERTY OF ARQUITECTONICA INTERNATIONAL CORP. NO COPIES, TRANSMISSIONS, REPRODUCTIONS OR ELECTRONIC MANIPULATION OF ANY PORTION OF THESE DRAWINGS IN THE WHOLE OR IN PART ARE TO BE MADE WITHOUT THE EXPRESS WRITTEN AUTHORIZATION OF ARQUITECTONICA INTERNATIONAL CORP. DESIGN INTENT SHOWN IS SUBJECT TO REVIEW AND APPROVAL OF ALL APPLICABLE LOCAL AND GOVERNMENTAL AUTHORITIES HAVING JURISDICTION. ALL COPYRIGHTS RESERVED © 2021. THE DATA INCLUDED IN THIS STUDY IS CONCEPTUAL IN NATURE AND WILL CONTINUE TO BE MODIFIED THROUGHOUT THE COURSE OF THE PROJECTS DEVELOPMENT WITH THE EVENTUAL INTEGRATION OF STRUCTURAL, MEP AND LIFE SAFETY SYSTEMS. AS THESE ARE FURTHER REFINED, THE NUMBERS WILL BE ADJUSTED ACCORDINGLY.

DRB FINAL SUBMITTAL  
120 MACARTHUR CAUSEWAY  
MIAMI BEACH, FL

WEST ELEVATION

SCALE: 1"=30'

DATE:  
06/29/2022

**A2-05**