

THOMPSON, MIAMI BEACH

4041 COLLINS AVE. - MIAMI BEACH - FLORIDA 33140



INTERIOR DESIGNER
MARTIN BRUDNIZKI DESIGN STUDIO
Unit 1G Chelsea Reach, 79-89 Lots Road
London, SW10 0RN, United Kingdom
Tel: +44 (0) 20 7376 7555
Fax: +44 (0) 20 7376 7444



ARCHITECTS
KOBI KARP ARCHITECTURE
AND INTERIOR DESIGN, INC.
2915 Biscayne Blvd. Suite 200
Miami, Florida 33137
Tel: (305) 573-1818
Fax: (305) 573-3766



LANDSCAPE
RAYMOND JUNGLES, INC.
242 SW 5th St.
Miami, FL 33130
Tel: 305.858.6777
Fax: 305.856.0742

REVISIONS / SUBMISSIONS		
1		
2		
3		
4		
5		
6		
7		
8		
9		
10		
11		
12		

1269

ALL DRAWINGS AND WRITTEN MATERIAL APPEARING HEREIN, CONSTITUTE THE ORIGINAL AND UNPUBLISHED WORK OF KOBI KARP AIA, AND MAY NOT BE DUPLICATED, USED, OR DISCLOSED WITHOUT THE EXPRESS WRITTEN CONSENT OF KOBI KARP ARCHITECTURE & INTERIOR DESIGN, INC. AIA, © 2014.

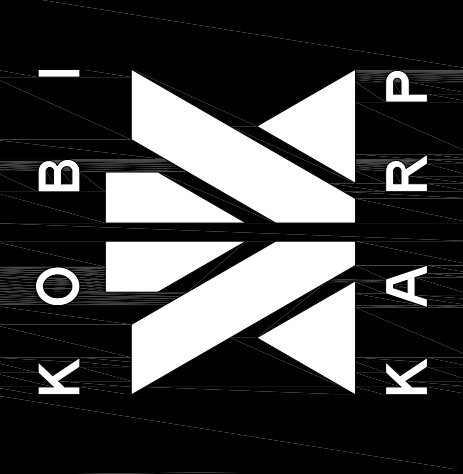
THOMPSON, MIAMI BEACH
4041 COLLINS AVE
MIAMI BEACH, FL

COVER



KOBI KARP
Lic. # AR0012578

ARCHITECTURE
INTERIOR DESIGN
PLANNING
AIA ASID NCARB
2915 Biscayne Boulevard
Suite 200
Miami, Florida 33137
Tel: 305.573.1818
Fax: 305.573.3766
WWW.KOBIKARP.COM



DRAWN BY: KKAI
CHECKED BY: KKAI
DATE: FEBURARY, 2014

A.000

D

C

B

A

DRAWING INDEX

- A.000 - COVER
- A.001 - DRAWING INDEX
 - SURVEY
 - RENDERINGS
- A.003 - SITE PLAN
- A.006 - CONTEXT MAP

- A.100 - PROPOSED LEVEL 1 - OVERALL PLAN
 - A.100.1 - PROPOSED LEVEL 1 - ENLARGED
 - A.100.2 - PROPOSED LEVEL 1 - ENLARGED
 - A.100.3 - PROPOSED LEVEL 1 - ENLARGED
 - A.100.4 - PROPOSED LEVEL 1 - ENLARGED
- A.101 - PROPOSED LEVEL 2 - OVERALL PLAN
 - A.101.1 - PROPOSED LEVEL 2 - ENLARGED

- A.200 - PROPOSED NORTH ELEVATIONS
- A.201 - PROPOSED EAST ELEVATIONS
- A.202 - ELEVATIONS SOUTH VIEW
- A.203 - PROPOSED WEST ELEVATIONS

- LH.100 - HARDSCAPE PLAN
- LP.100 - CANOPY PLANTING PLAN
- LP.200 - PLANTING - UNDERSTORY PLAN
- LP.300 - PLANT LIST
- LH.400 - SECTION OF REAR GARDEN
- LH.401 - 41ST STREET ELEVATION
- LH.402 - COLLINS AVENUE ELEVATION
- LH.403 - 40TH STREET ELEVATION
- LH.500 - GARDEN & HARDSCAPE IMAGERY

REVISIONS / SUBMISSIONS		
1		
2		
3		
4	.	.
5	.	.
6	.	.
7	.	.
8	.	.
9	.	.
10	.	.
11	.	.
12	.	.

1269

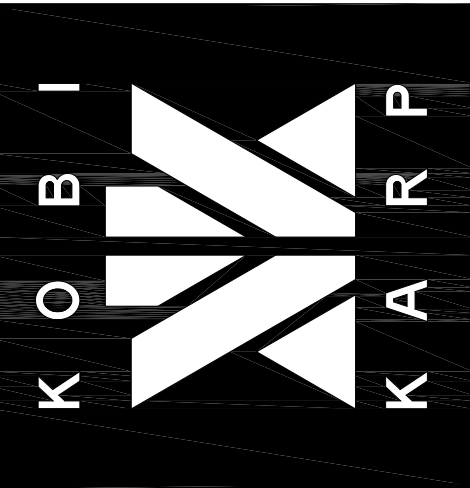
ALL DRAWINGS AND WRITTEN MATERIAL APPEARING HEREIN, CONSTITUTE THE ORIGINAL AND UNPUBLISHED WORK OF KOBI KARP AIA, AND MAY NOT BE DUPLICATED, USED, OR REPRODUCED WITHOUT THE EXPRESS WRITTEN CONSENT OF KOBI KARP ARCHITECTURE & INTERIOR DESIGN, INC. AIA, IS _2014_

THOMPSON, MIAMI BEACH
4041 COLLINS AVE
MIAMI BEACH, FL

DRAWING
INDEX

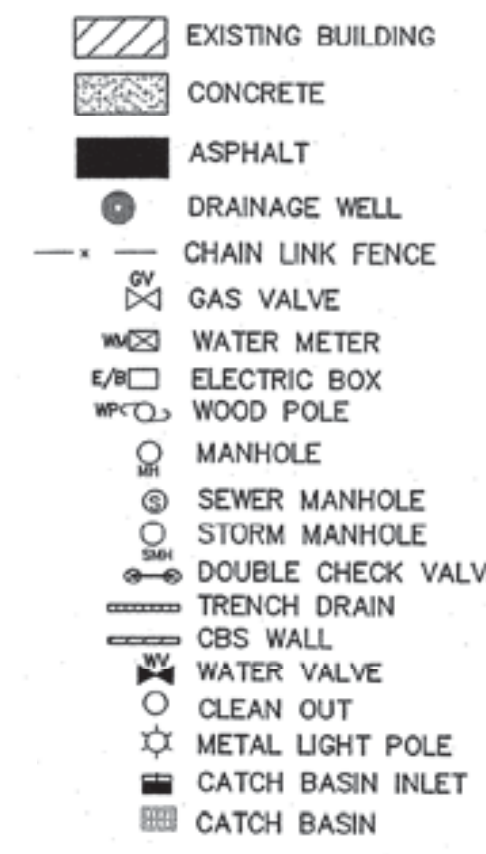
KOBI KARP
Lic. # AR0012578

ARCHITECTURE
INTERIOR DESIGN
PLANNING
AIA ASID NCARB
2015 Biscayne Boulevard
Miami, Florida 33137
P: 305.573.3765
F: 305.573.3766
WWW.KOBIKARP.COM



DRAWN BY:	KKAIID
CHECKED BY:	KKAIID
DATE:	FEBURARY, 2014

A.001



P.B. = PLAT BOOK
PG. = PAGE
MH = MANHOLE
CLR. = CLEAR
(C) = CALCULATED
SWK = SIDEWALK
FD. = FOUND
C = CENTERLINE
CLF = CHAIN LINK FENCE
ELEV. = ELEVATION
C.B.S. = CONCRETE BLOCK STRUCTURE
CONC. = CONCRETE
BLDG. = BUILDING
F.F. EL. = FINISH FLOOR ELEVATION
O.E. = OVERHEAD ELECTRIC
WM = WATER METER
BW = BRASS WASHER
P.K. = PARKER KALON
VV = WATER VALVE
WM = WATER METER
PL. = PLANTER
STY. = STORY
E = PROPERTY LINE
R/W = RIGHT-OF-WAY
(M) = MEASURED
(P) = PLAT
(R) = RECORD
P/S = PARKING SPACES



POINT
YORS, INC.
TEL. 305-822-6062 *FAX 305-827-9669
TYPE OF PROJECT:
ALTA/ACSM LAND TITLE SURVEY

ROYAL
LAND SURVEY
LB.#
6175 NW 153 ST., SUITE 321, MIAMI LAKES, FL. 33014
PREPARED FOR:
ACCELERATED PROPERTIES, LLC
4041 COLLINS AVENUE, MIAMI BEACH, FLORIDA

2

PROPOSED



EXISTING CONDITIONS



DROP-OFF AREA ON COLLINS AVENUE

THOMPSON MIAMI BEACH
4041 COLLINS AVENUE, MIAMI BEACH, FL

PROPOSED



EXISTING CONDITIONS



HISTORIC HOUSE ON 41st STREET

THOMPSON MIAMI BEACH
4041 COLLINS AVENUE, MIAMI BEACH, FL

PROPOSED



EXISTING CONDITIONS



HISTORIC HOUSE - VIEW FROM PROPOSED GROVE

THOMPSON MIAMI BEACH
4041 COLLINS AVENUE, MIAMI BEACH, FL

PROPOSED



EXISTING CONDITIONS



OCEAN VIEW SUITE & NEW POOL DECK

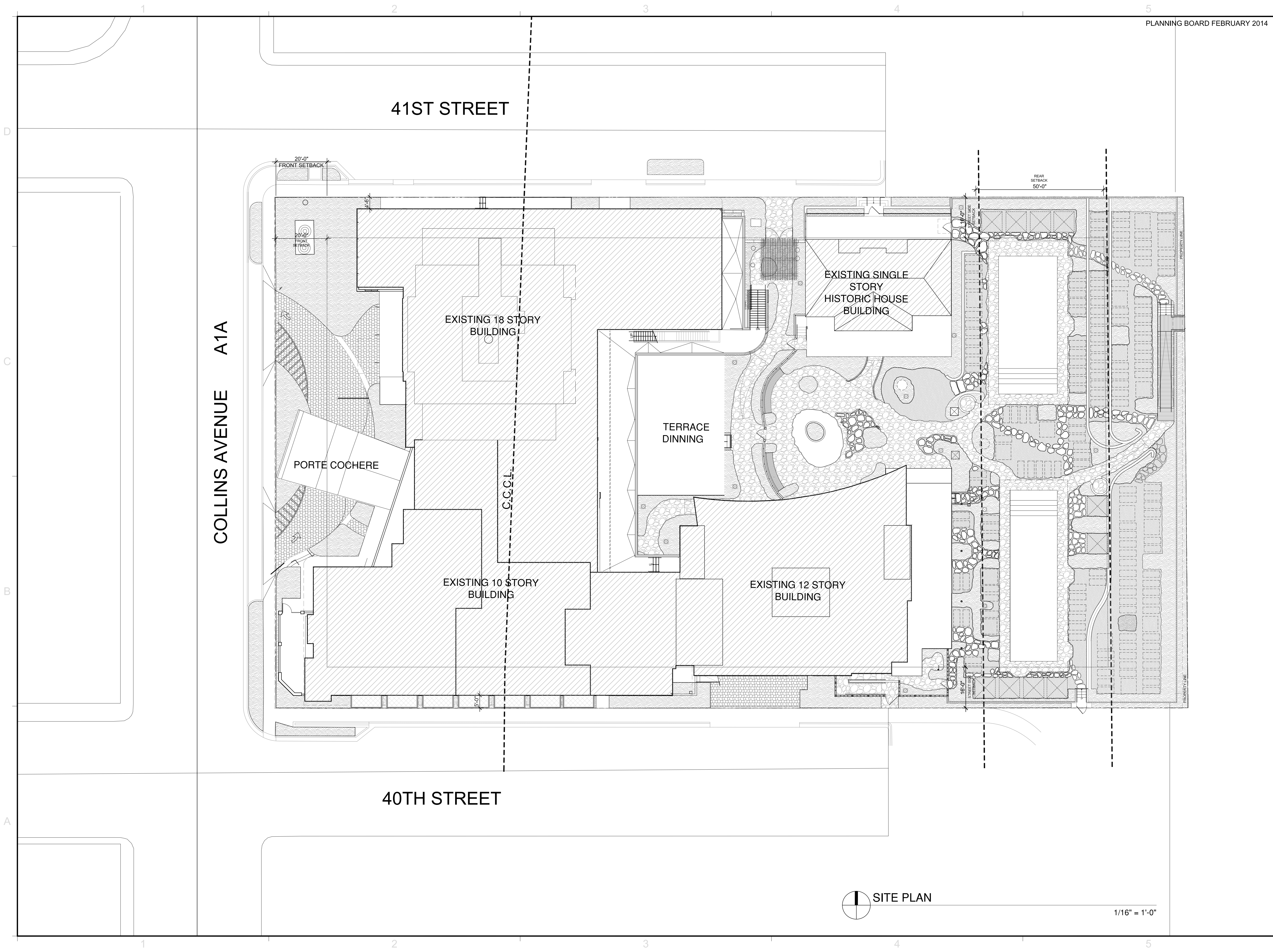
THOMPSON MIAMI BEACH
4041 COLLINS AVENUE, MIAMI BEACH, FL

PROPOSED



EXISTING CONDITIONS





PLANNING BOARD FEBRUARY 2014

REVISIONS / SUBMISSIONS

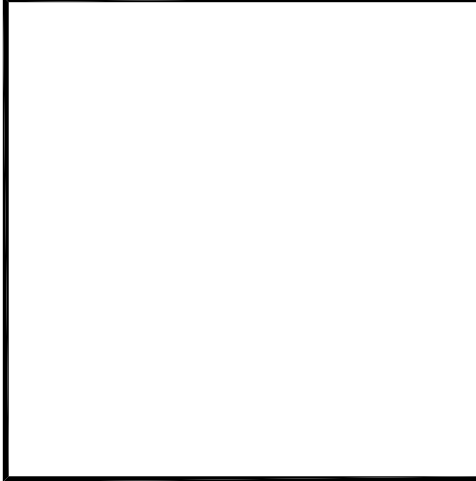
1	.	.
2	.	.
3	.	.
4	.	.
5	.	.
6	.	.
7	.	.
8	.	.
9	.	.
10	.	.
11	.	.
12	.	.

1269

ALL DRAWINGS AND WRITTEN MATERIAL APPEARING HEREIN, CONSTITUTE THE ORIGINAL AND UNPUBLISHED WORK OF KOBI KARP AIA, AND MAY NOT BE DUPLICATED, USED, OR REPRODUCED WITHOUT THE EXPRESS WRITTEN CONSENT OF KOBI KARP ARCHITECTURE & INTERIOR DESIGN, INC. AIA, © 2014.

THOMPSON, MIAMI BEACH
4041 COLLINS AVE
MIAMI BEACH, FL

SITE PLAN

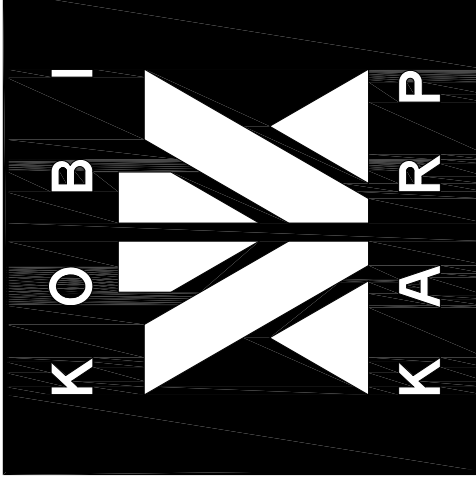


K O B I
K A R P

K O B I K A R P
Lic. # AR0012578

ARCHITECTURE
INTERIOR DESIGN
PLANNING

AIA ASID NCARB
2915 Biscayne Boulevard
Suite 200
Miami, Florida 33137
P: 305.573.2766
F: 305.573.2766
WWW.KOBIKARP.COM



DRAWN BY:	KKAIID
CHECKED BY:	KKAIID
DATE:	FEBURARY, 2014

A.003

SITE PLAN

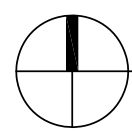
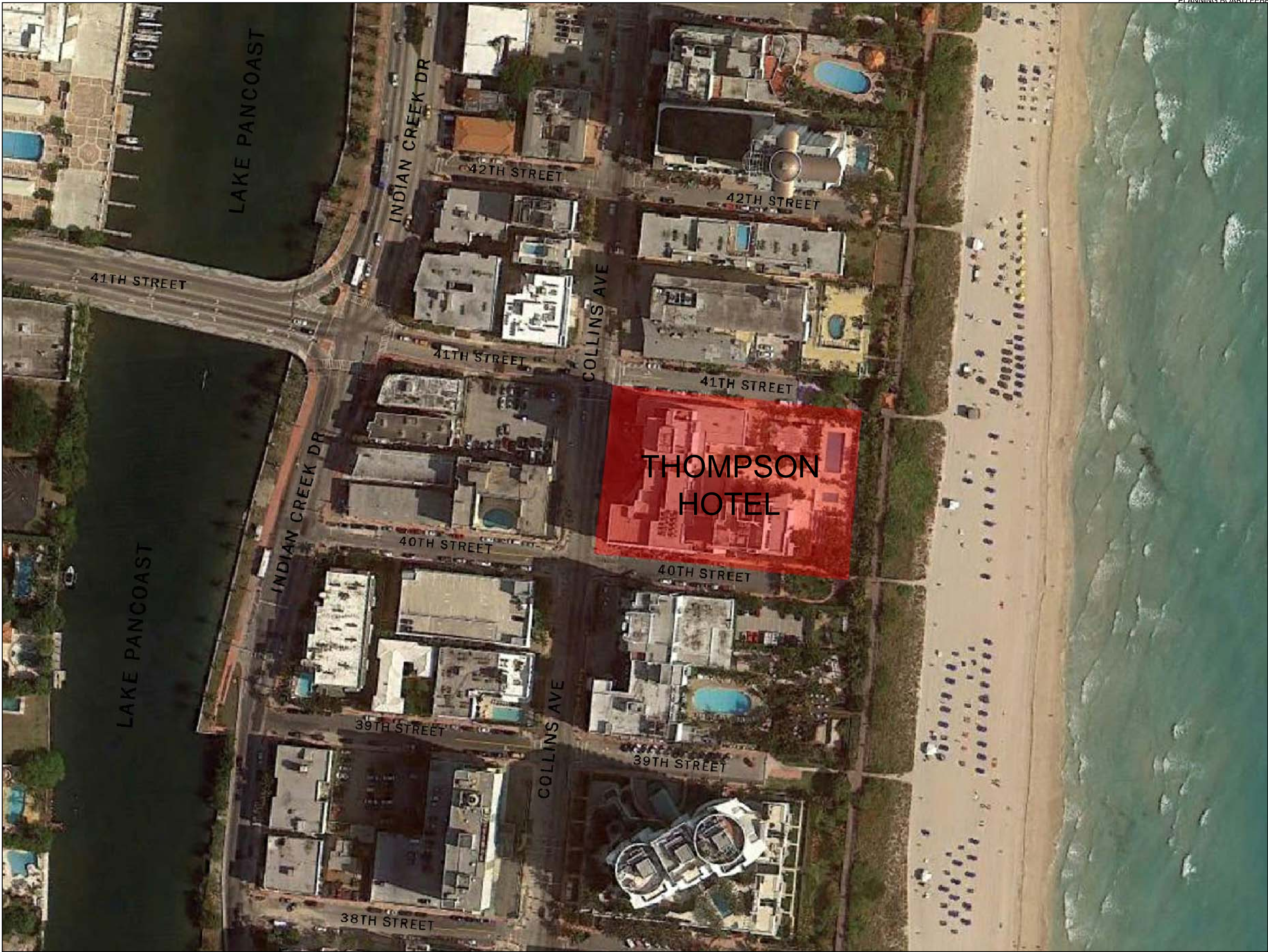
1/16" = 1'-0"

D

C

B

A



CONTEXT SITE MAP

N.T.S.

PLANNING BOARD FEBRUARY 2014

REVISIONS / SUBMISSIONS	
1	
2	
3	
4	
5	
6	
7	
8	
9	
10	
11	
12	

1269

ALL DRAWINGS AND WRITTEN MATERIAL APPEARING HEREIN
CONSTITUTE THE ORIGINAL AND UNPUBLISHED WORK OF KOB
KARP AND MAY NOT BE REPRODUCED, COPIED, OR DISCLOSED
WITHOUT THE EXPRESS WRITTEN CONSENT OF KOB KARP
ARCHITECTURE & INTERIOR DESIGN, INC. AIA, LLC © 2014

THOMPSON, MIAMI BEACH

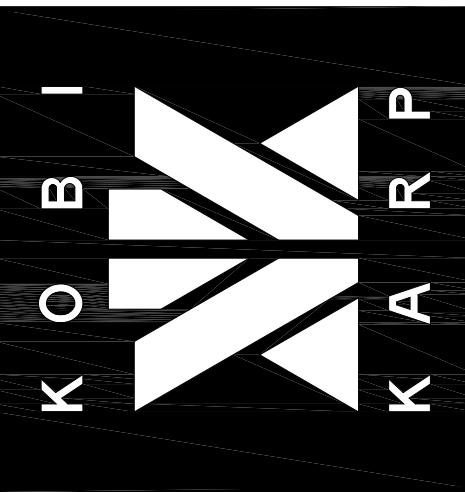
4041 COLLINS AVE
MIAMI BEACH, FL

CONTEXT SITE
MAP



KOB KARP
LLC # AR0012578

ARCHITECTURE
INTERIOR DESIGN
PLANNING
AIA ASID NCARB
2815 Biscayne Boulevard
Suite 200
Miami, FL 33137
Tel: 305.573.1818
Fax: 305.573.3766
WWW.KOBKARP.COM



DRAWN BY: KKAID
CHECKED BY: KKAID
DATE: FEBRUARY, 2014

A.006