

A photograph of three young children in a classroom setting, overlaid with a semi-transparent blue filter. The children are looking intently at something off-camera. The child on the left is a girl with dark hair, wearing a red shirt. The child in the center is a girl with long blonde hair, wearing clear safety goggles and a pink wristband. The child on the right is a boy with blonde hair, also wearing clear safety goggles. A globe is visible in the lower-left foreground, and a white structure, possibly a model of a wind turbine, is in the lower-right foreground.

PB Presentation

June 21, 2022



Vision

- World-class education available in South Beach
- Leverage best elements of multiple teaching methodologies
- Core focus on Project Based Learning (PBL)
- Neighborhood friendly location South of Fifth

Inspiration

- Project-based
- Emphasis on exploratory learning
- STEAM (STEM plus art)
- Technology savy – early robotics, programming, etc
- Multi-lingual exposure - Spanish & Mandarin (future)
- Montessori style activities (hands-on / tactile)
- Khan Academy Kids online learning program
- Organic meals
- Healthy lifestyle / yoga / outdoor activities
- Manners / respect / practical life lessons

Identity

basecamp

Word Origin

noun

A main encampment providing supplies, shelter, and communications for persons engaged in wide-ranging activities, as exploring, reconnaissance, hunting, or mountain climbing.

BaseCamp305

base

Foundation
Family
Friends
Values
Manners
Respect
Confidence
Curiosity
Intuition
Methodology
Knowledge

camp

Explore
Adventure
Discover
Learn
Build
Communicate
Compete
Invent
Imagine
Dream
Execute

305

Neighborhood
Environment
Sustainability
Awareness
Healthy
Organic
Outdoors
Active
Culture
Sunshine
Ocean

BaseCamp305 Videos

<https://vimeo.com/668624117>

<https://vimeo.com/718374642>

(Videos can play when in Slide Show mode)

224 2nd Street Project Re-Cap

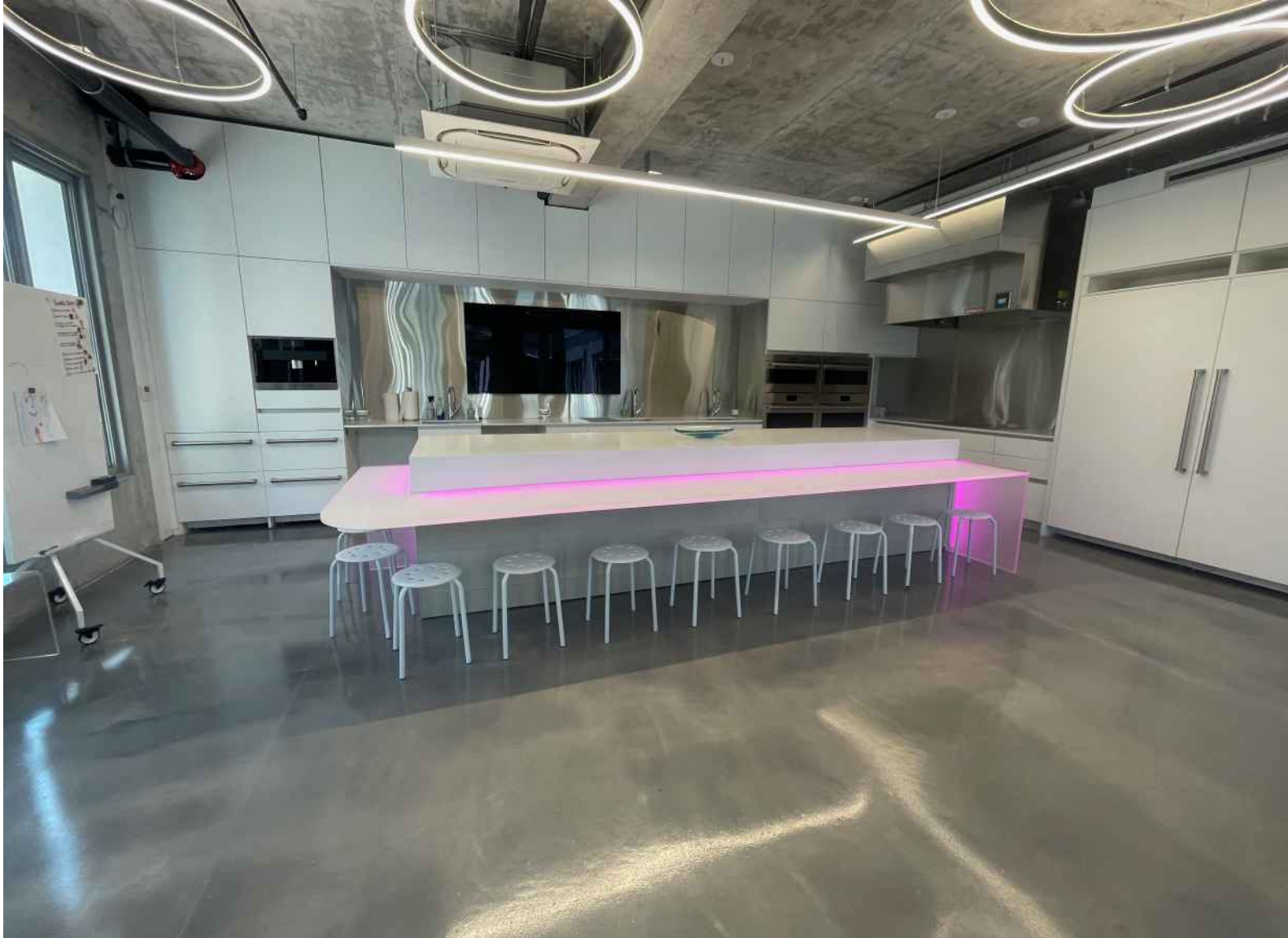
224 2nd Street Completed



224 2nd Street – MakerSpace and Classroom



224 2nd Street – Learning Kitchen

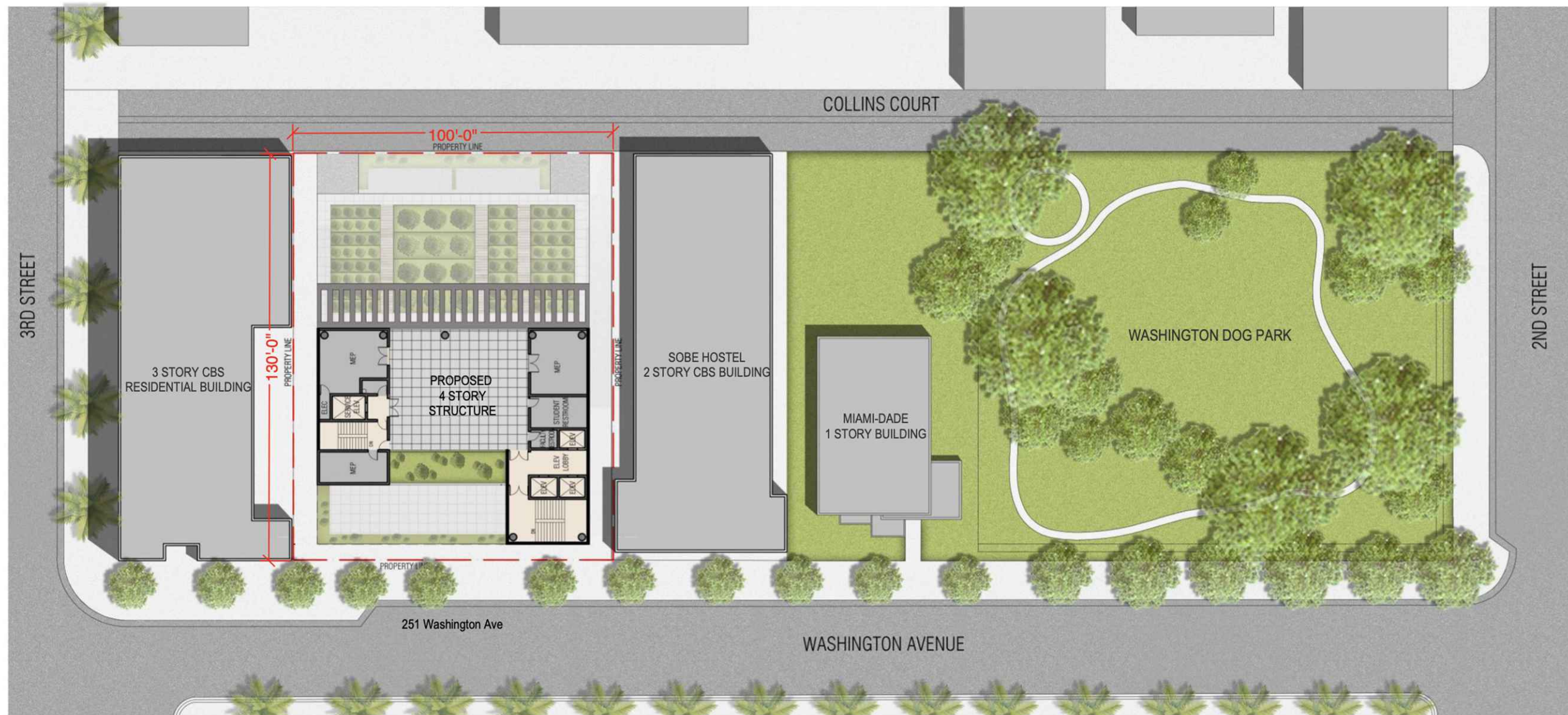


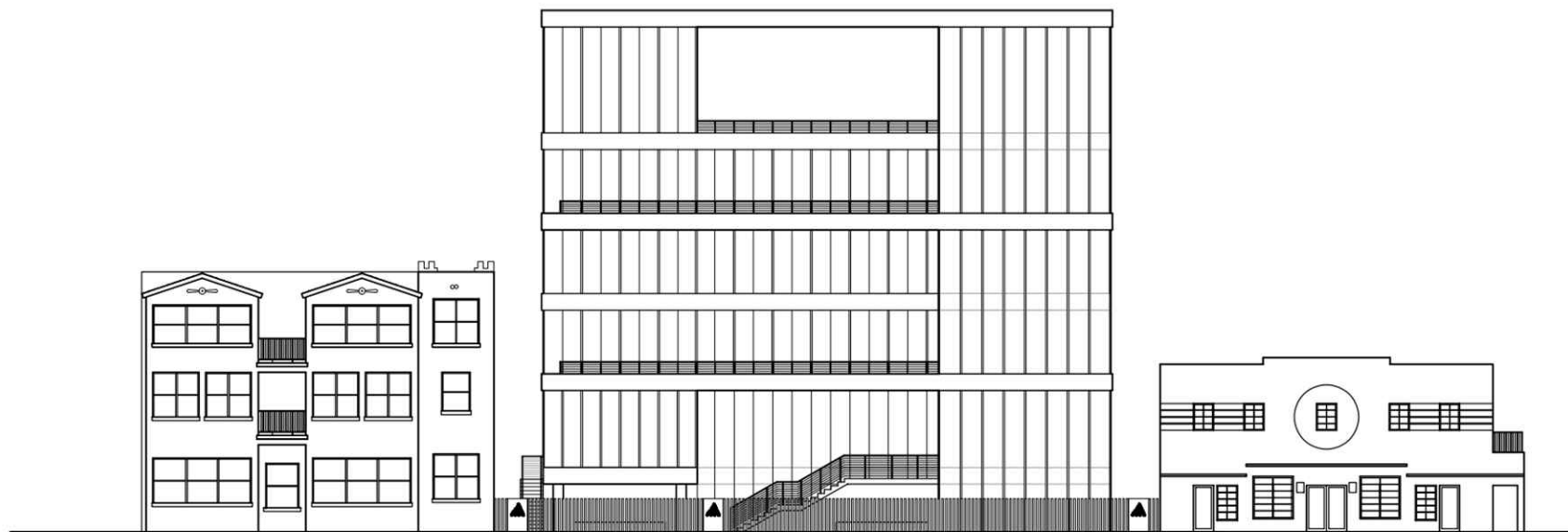
Context

251 Washington – Upper Elementary & Middle School



251 Washington Proposed Project





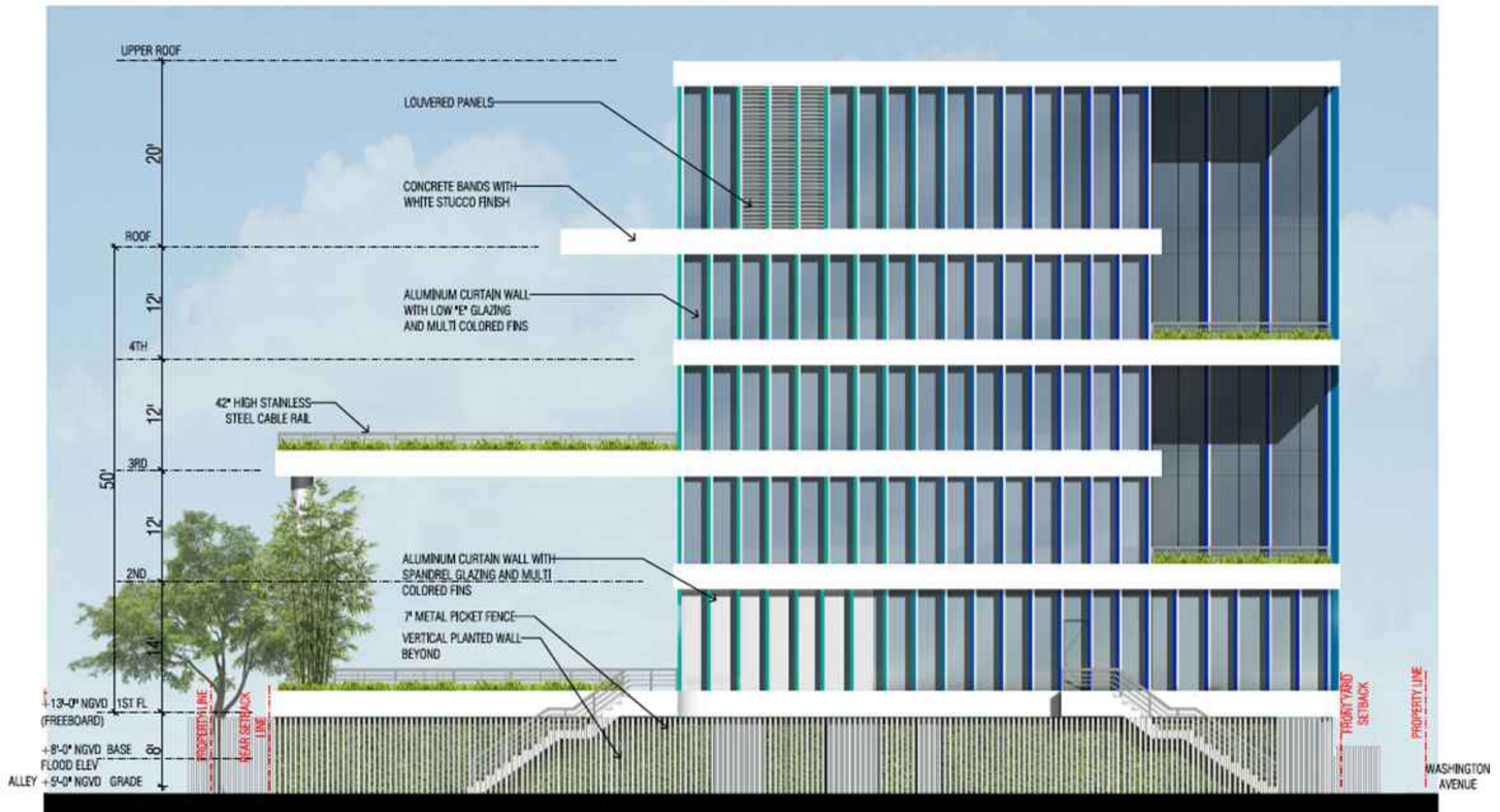
251 WASHINGTON AVENUE SITE

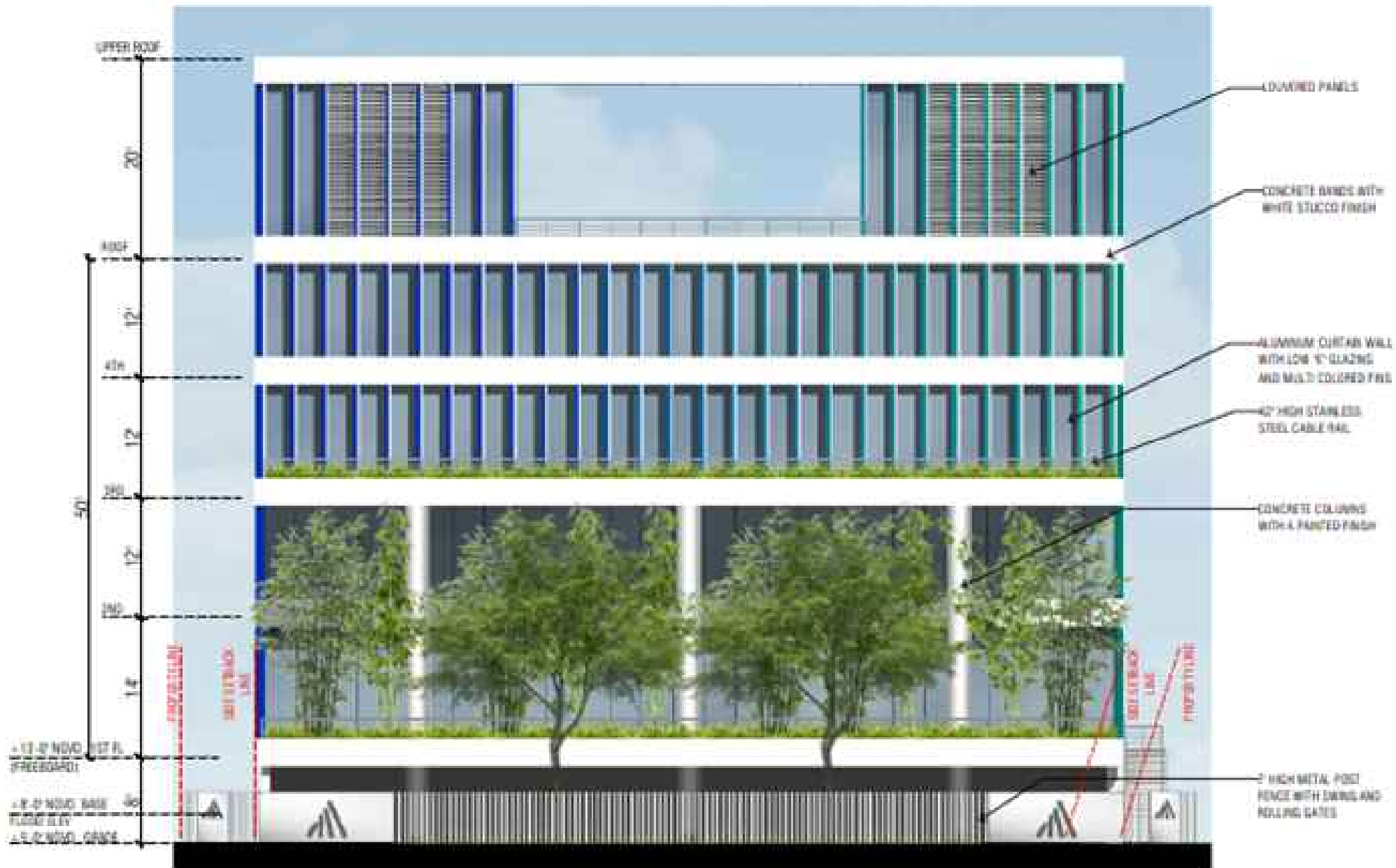


251 WASHINGTON AVENUE SITE

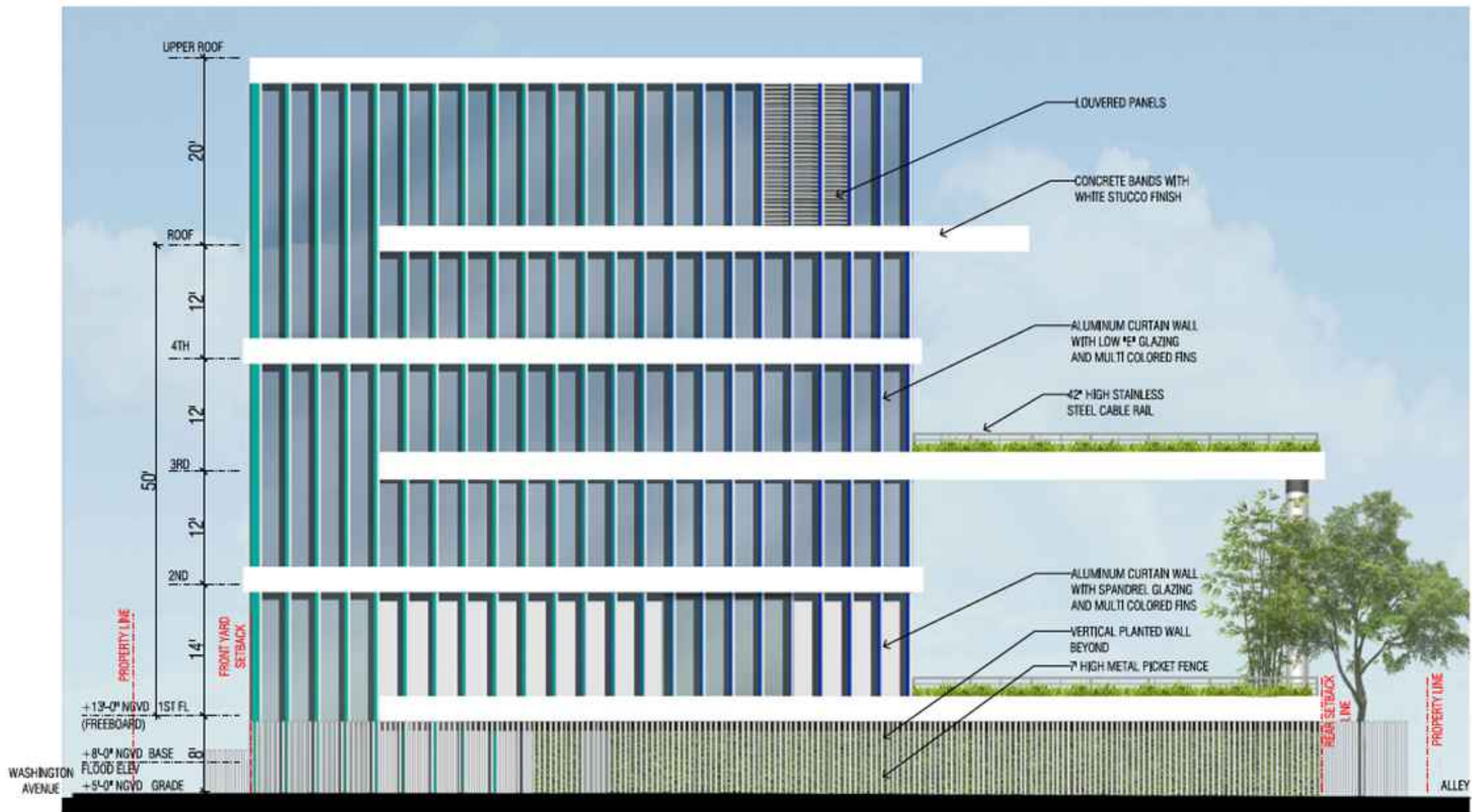


FRONTING WASHINGTON AVENUE

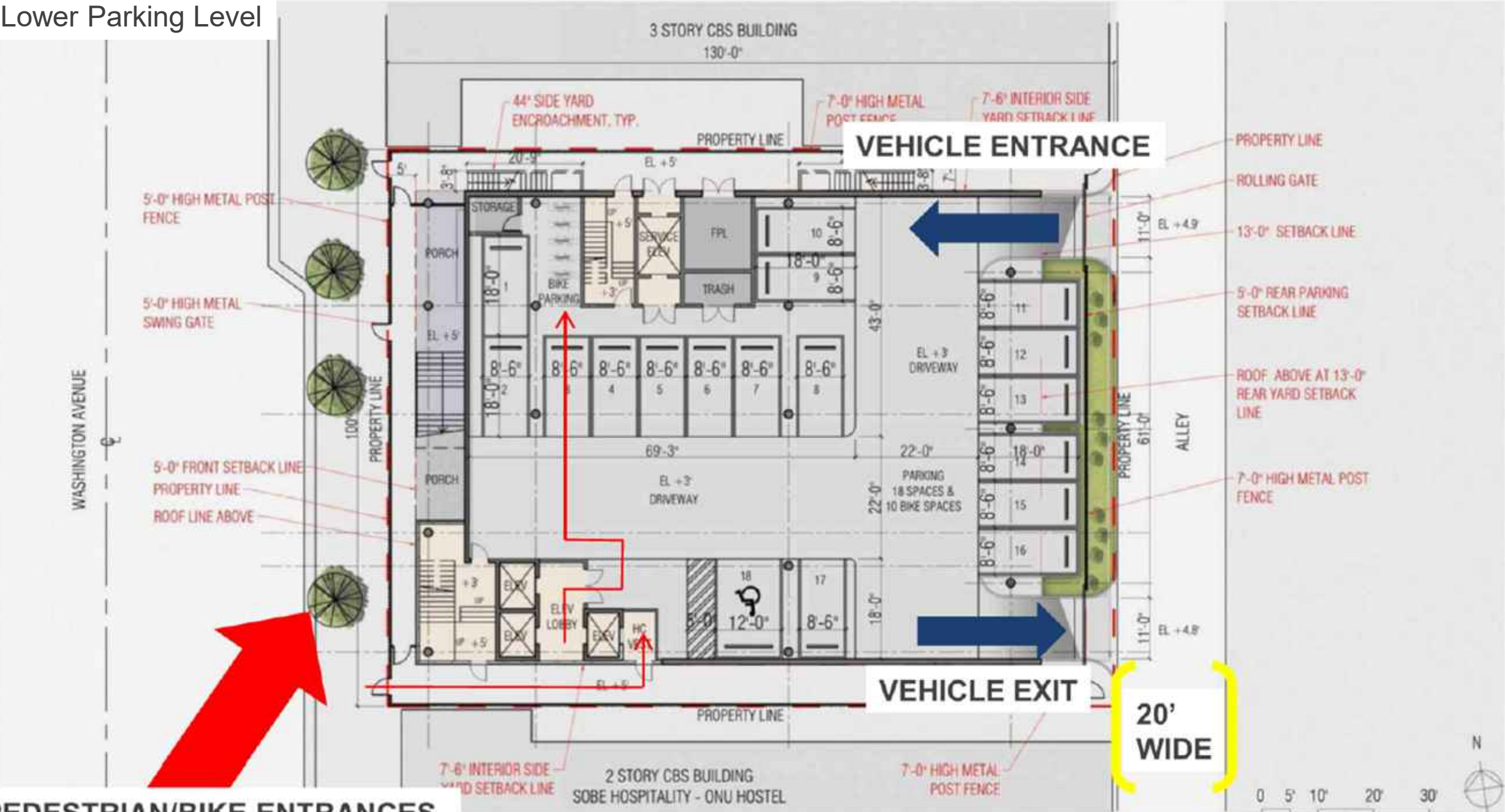




FRONTING COLLINS COURT



Lower Parking Level



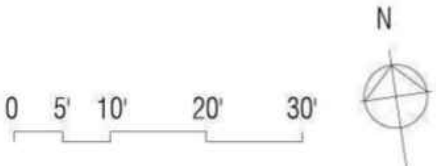
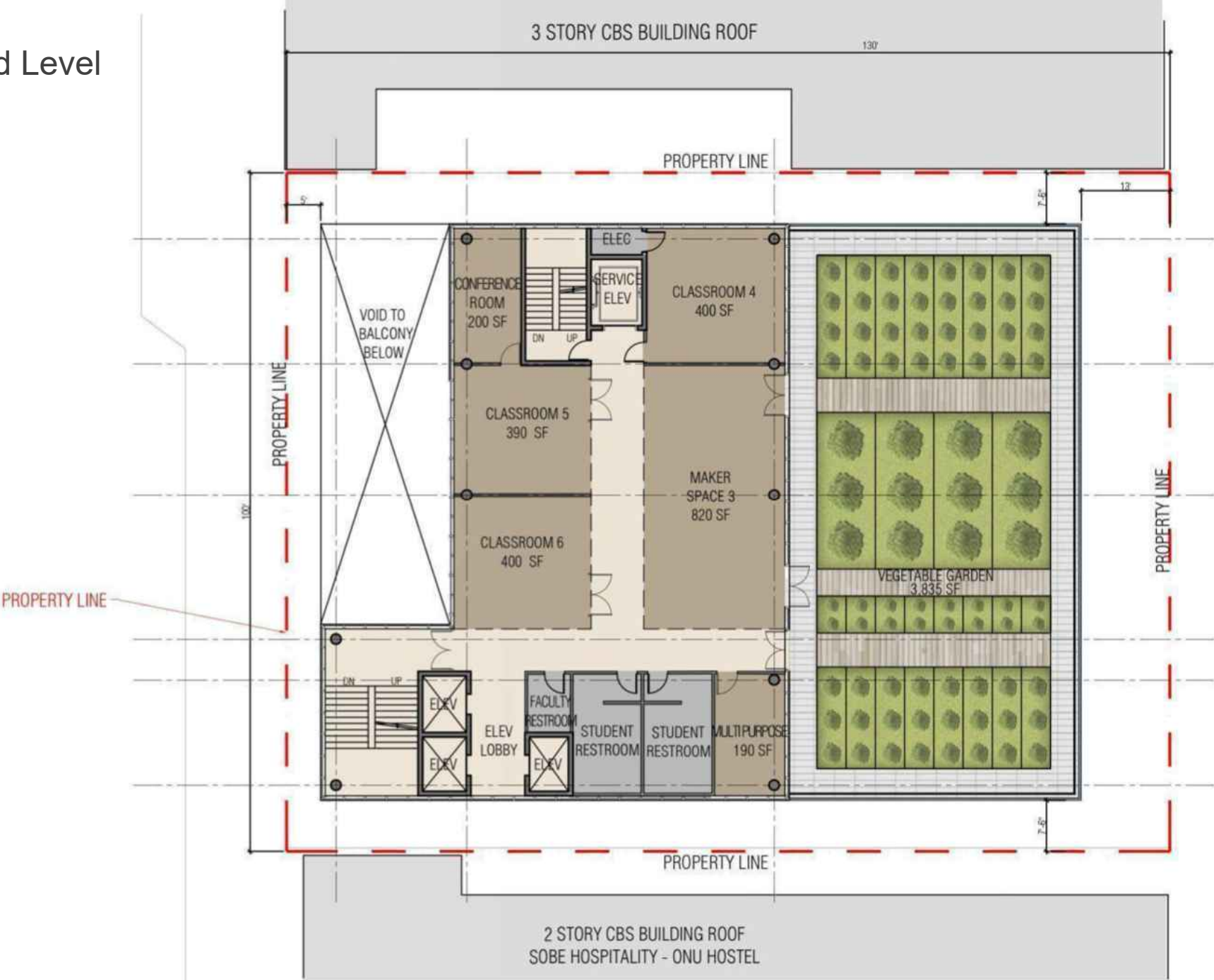
First Level



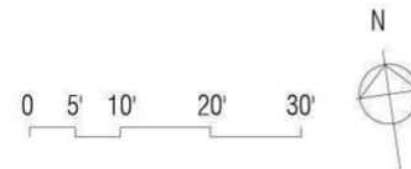
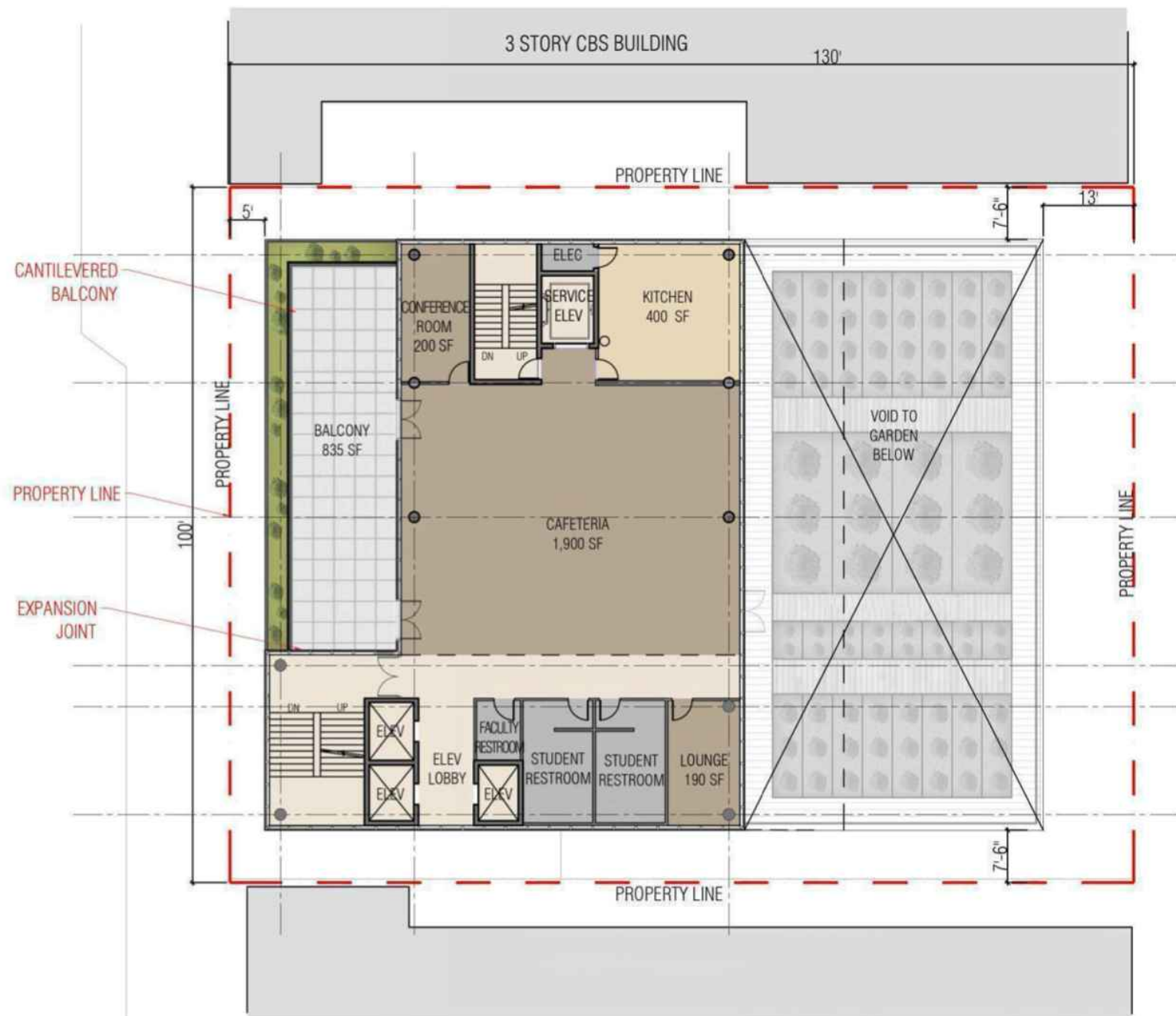
Second Level



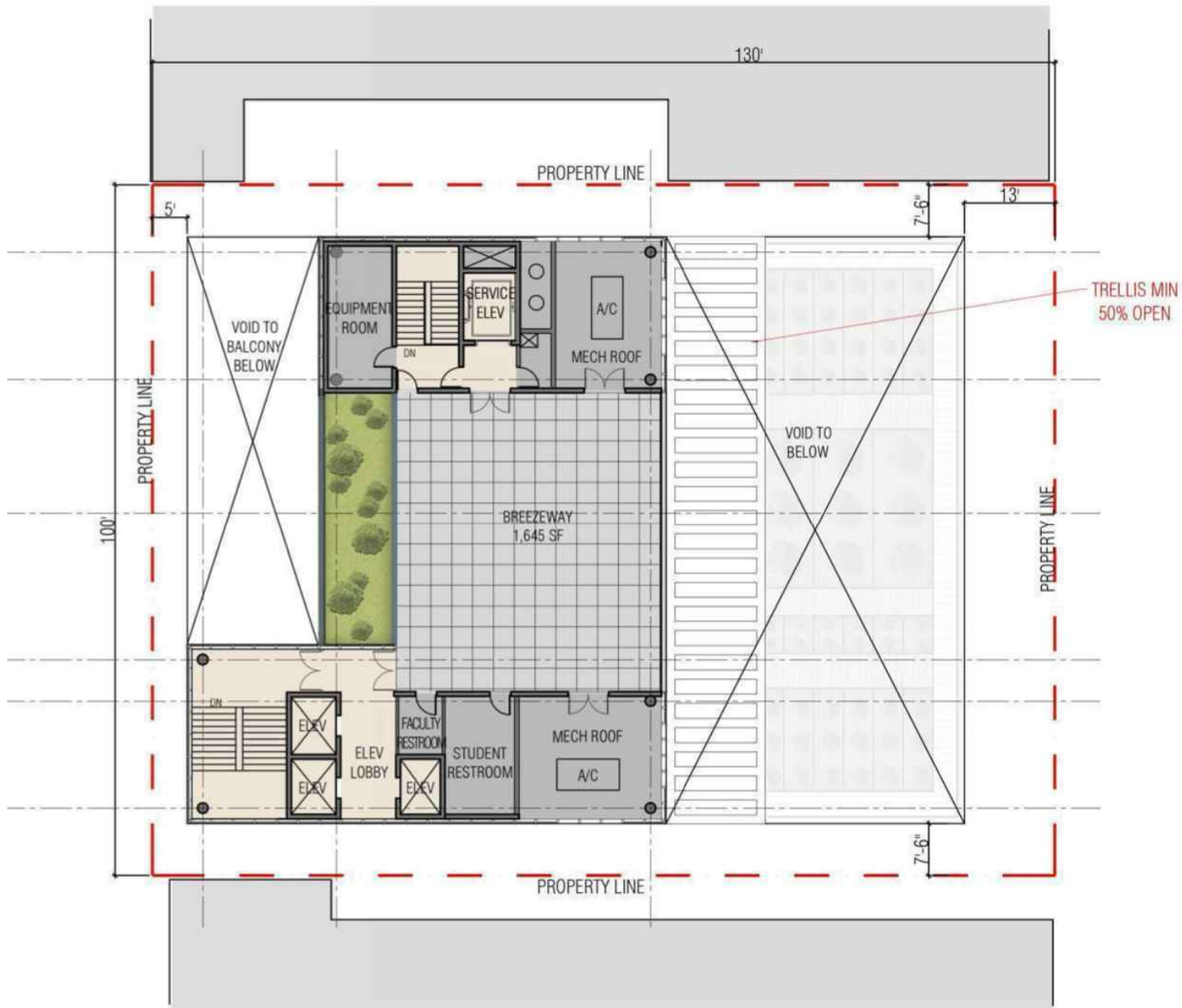
Third Level



Fourth Level



Roof



Operations

Concept

- Permanent Facility
- Upper Elementary and Middle School, Grades 3-8
- Local Students – biking and walking
 - Minimal vehicular traffic
- 40 Students, capacity for 80-90 with gradual growth
- Seven (7) full-time teachers
- Two (2) full-time school administrators
- Two (2) full-time staff members for food and snack distributions
- A janitorial service for daily cleaning

Hours and Access

- The hours of operation: 7:00 AM and 5:00 PM
 - Start Time 8:00 AM
 - End Time 2:30 PM
 - After School Activities End Time 5:00 PM
 - Work with staff on outdoor use hours
- Gated with Pedestrian only entrances on Washington Avenue
- Vehicular Egress and Ingress on Collins Court
- Sufficient Off-Street Parking and Loading (Variance Withdrawn)
- Deliveries until 5:00 PM

Reference Buildings











