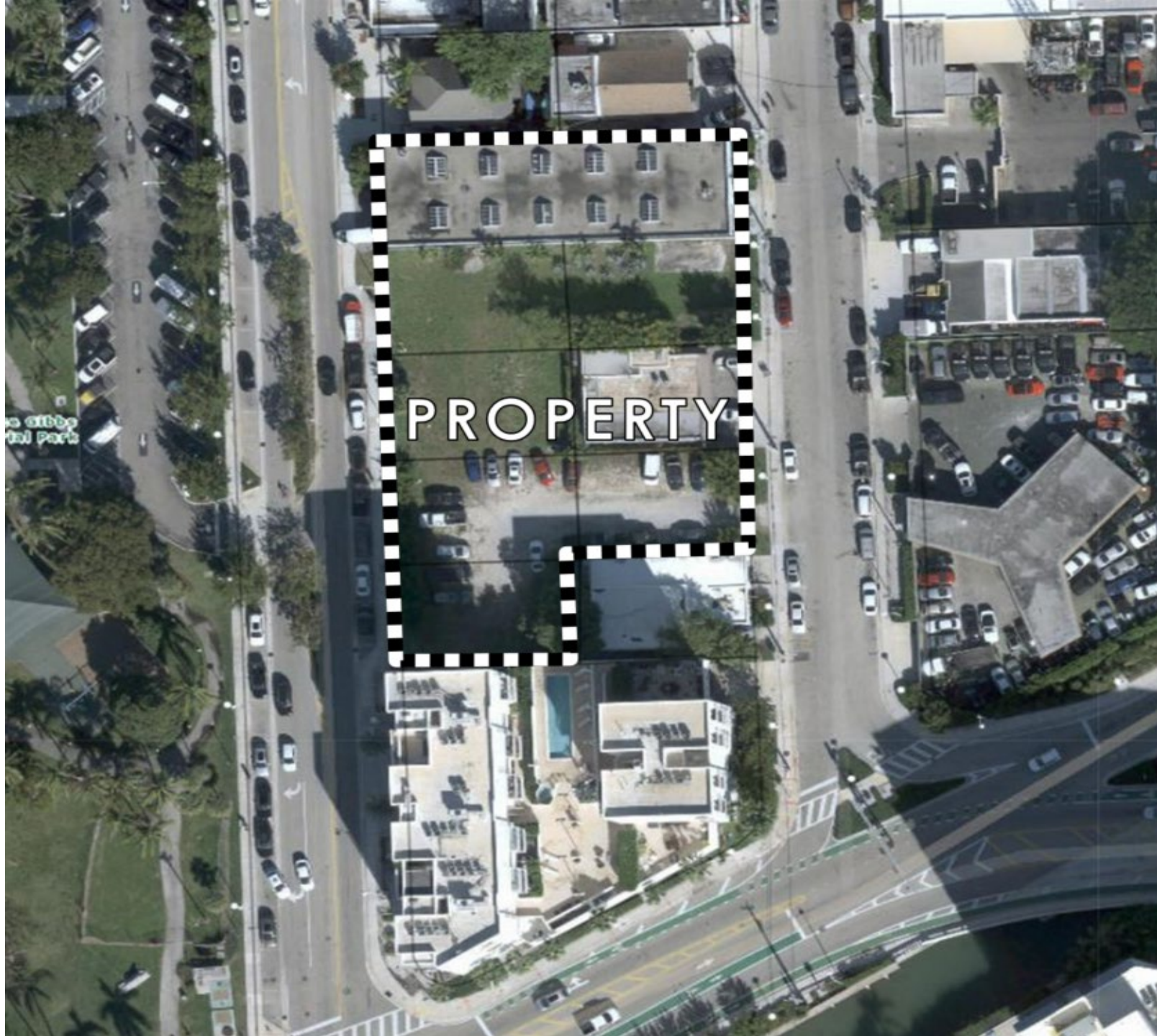


# SUNSET LAND ASSOCIATES LLC

## DRB22-0814



**Design Review Board**  
**June 7, 2022**



PROPERTY



# APPROVAL HISTORY

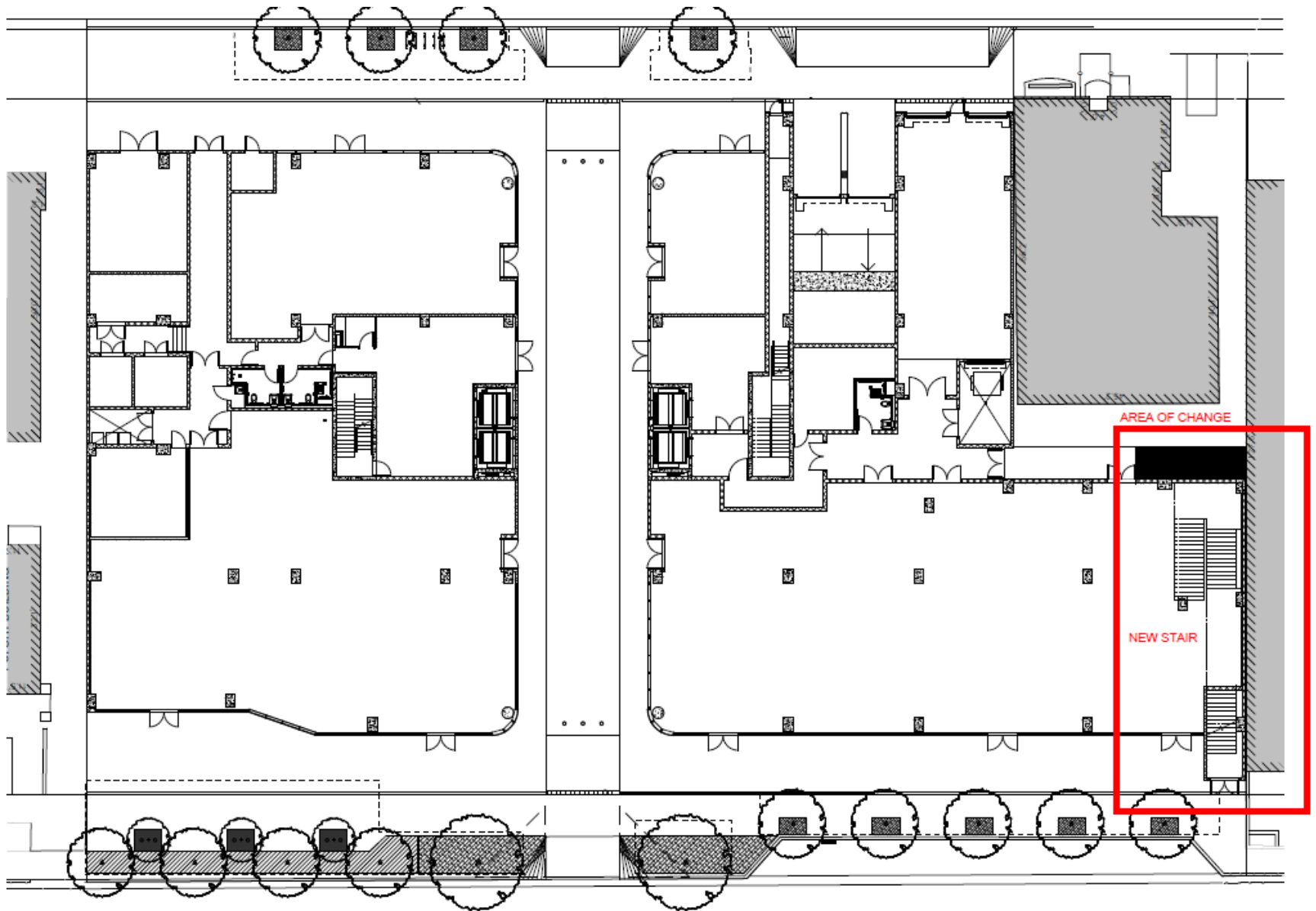
## PB20-0344; PB17-0168 (a/k/a PB 18-0168)

New 5-story mixed-use structure with up to ±67,500 gross square feet, and consisting of up to 24,271 square feet of commercial/office space on the ground floor, including 2 restaurants (each exceeding one hundred (100) seats); parking on the 2nd floor; up to 29,728 square feet of commercial/office uses on the 3rd and 4th floors; and up to 2 residential units on the 5th floor with a roof top amenity.

## DRB20-0549; DRB17-0198

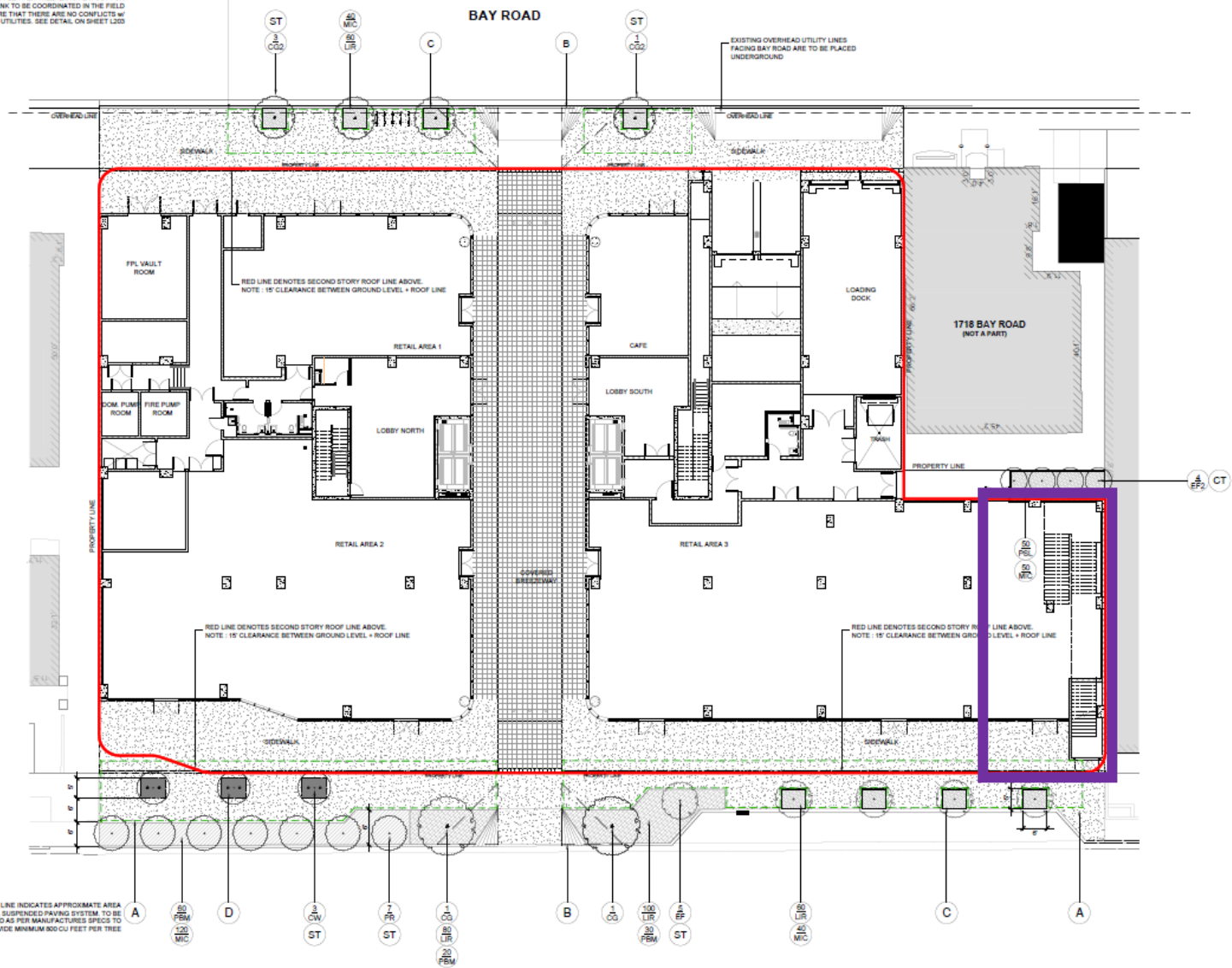
Construction of a new 5-story mixed-use office building with an overall height of 65 feet .

# GROUND FLOOR



# GROUND FLOOR

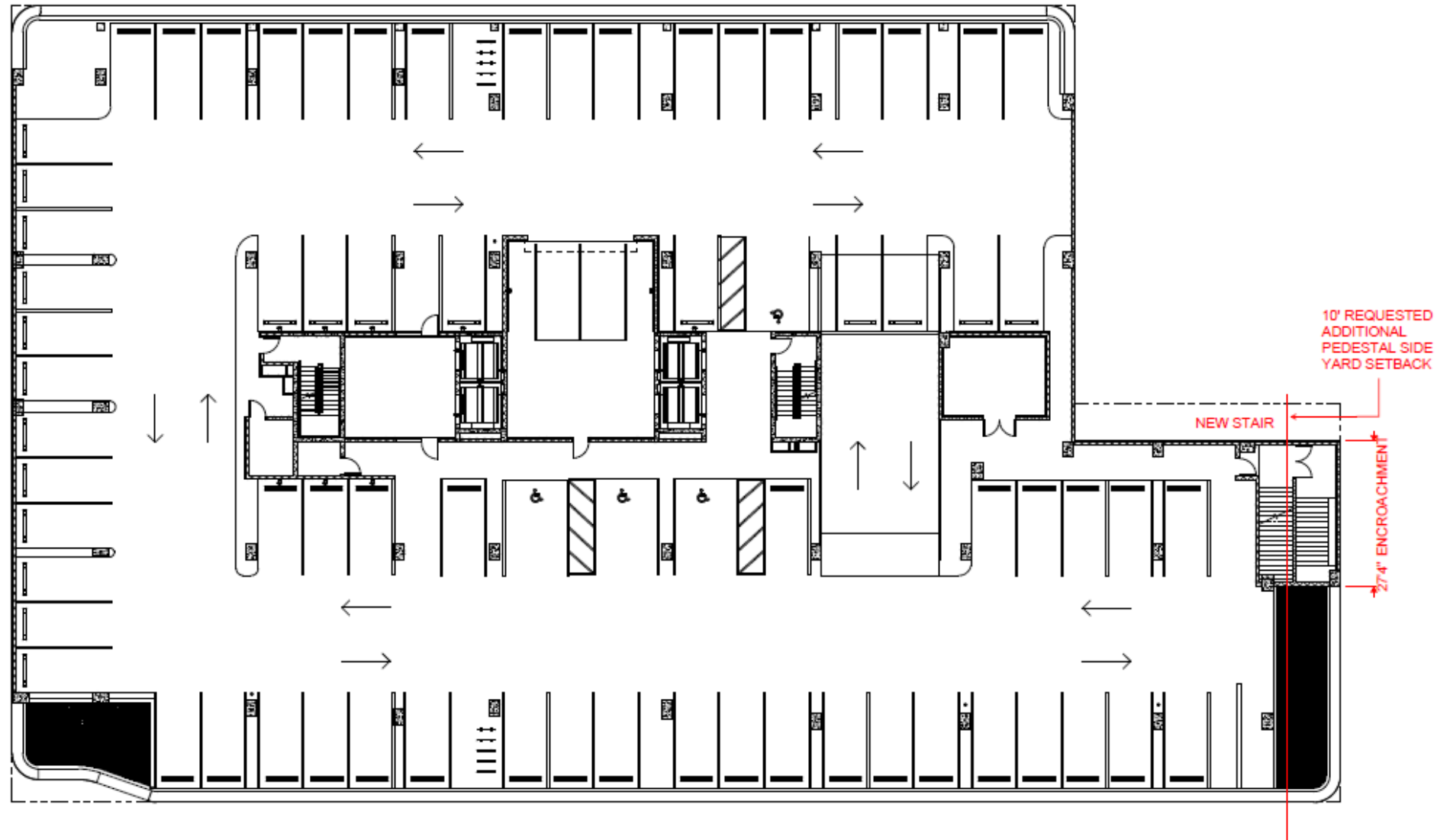
GREEN DASHED LINE INDICATES APPROXIMATE AREA OF SILVA CELL SUSPENDED PAVING SYSTEM TO BE INSTALLED AS PER MANUFACTURERS SPECS TO PROVIDE MINIMUM 800 CU FEET PER TREE. EXACT LAYOUT FOR SILVA CELL SYSTEM + DUCT BANK TO BE COORDINATED IN THE FIELD PRIOR TO CONSTRUCTION TO ENSURE THAT THERE ARE NO CONFLICTS W/ FPL DUCT BANK + OTHER UTILITIES. SEE DETAIL ON SHEET L010



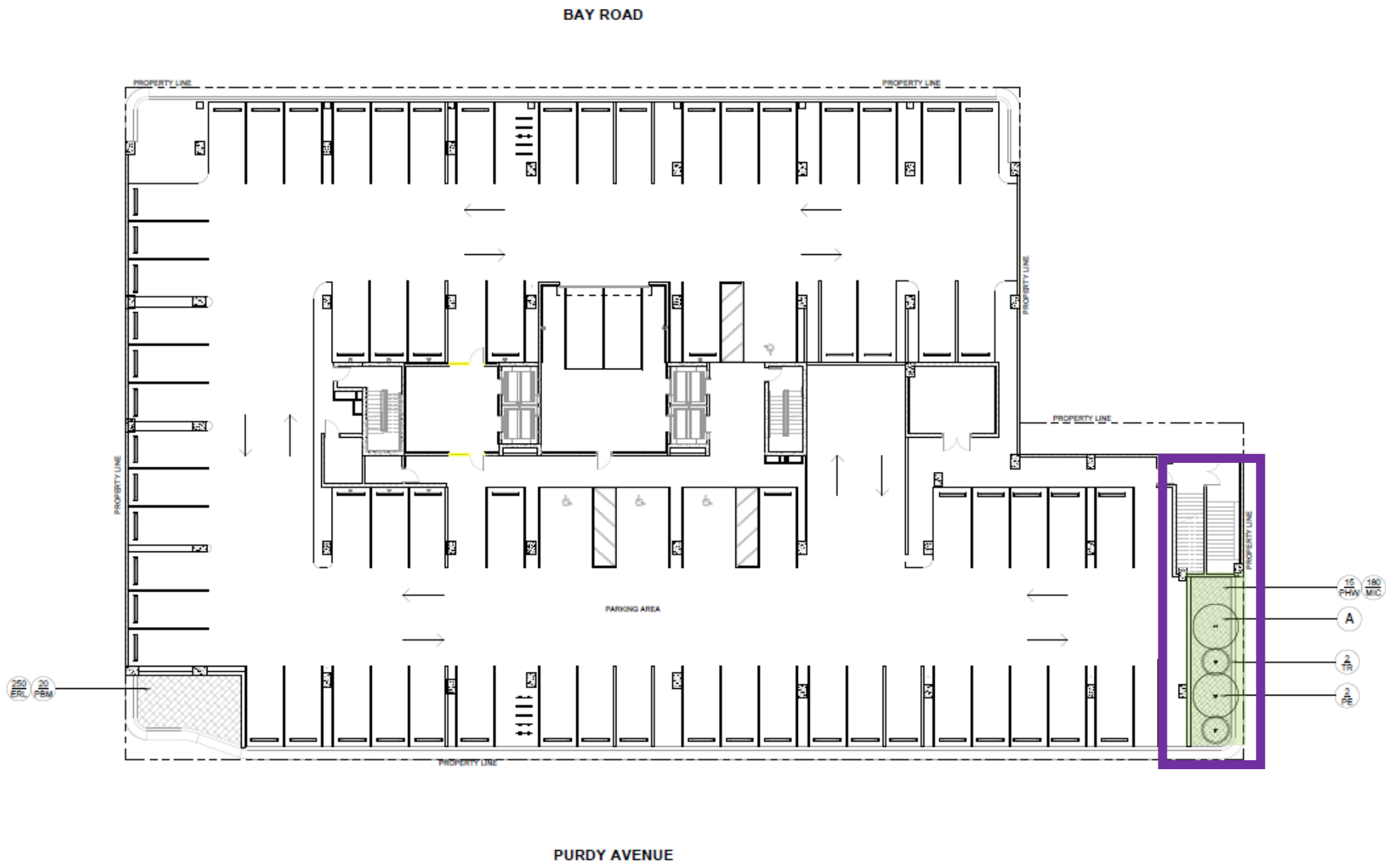
GREEN DASHED LINE INDICATES APPROXIMATE AREA OF SILVA CELL SUSPENDED PAVING SYSTEM TO BE INSTALLED AS PER MANUFACTURERS SPECS TO PROVIDE MINIMUM 800 CU FEET PER TREE

PURDY AVENUE

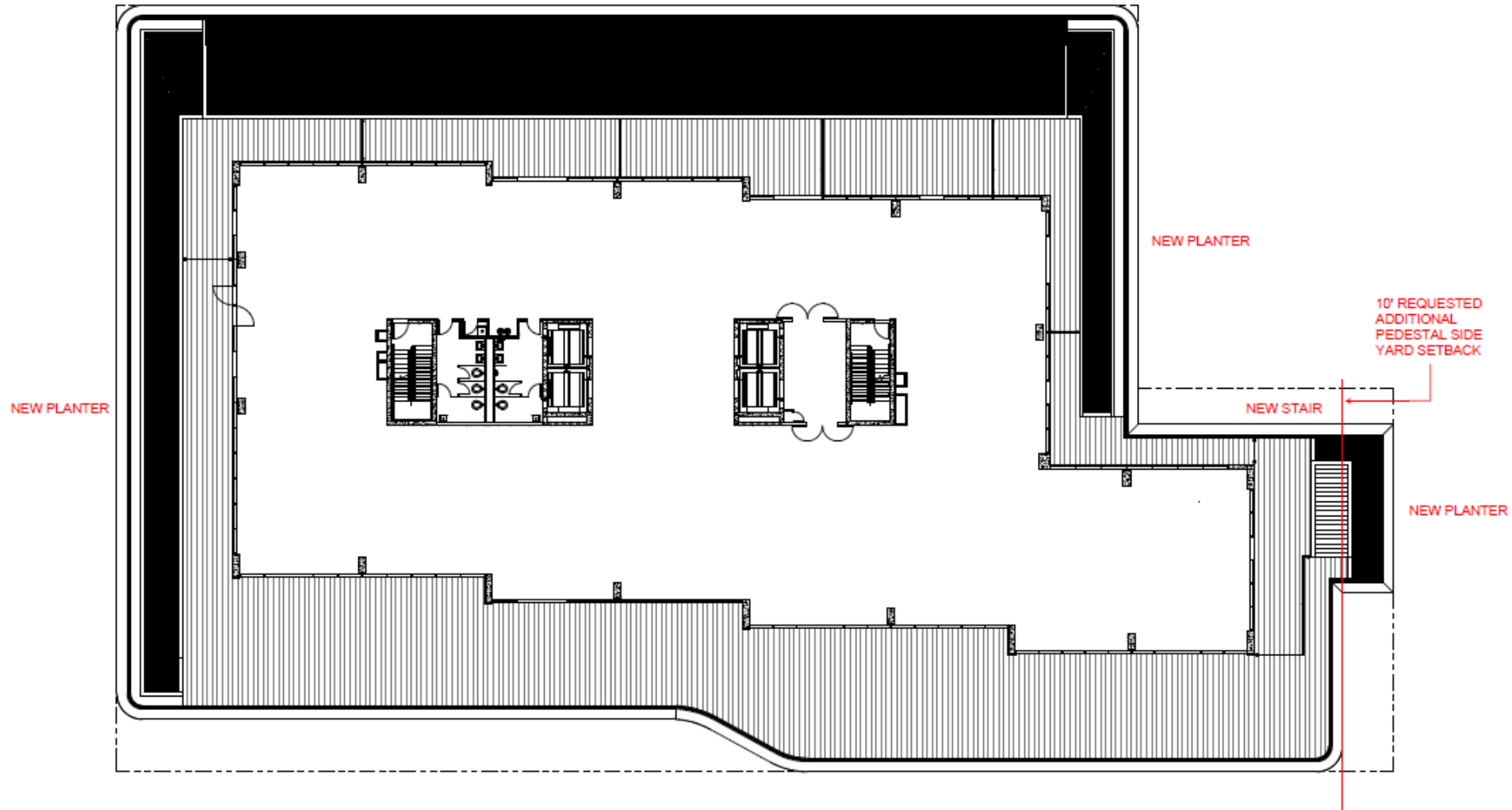
# SECOND FLOOR



# SECOND FLOOR

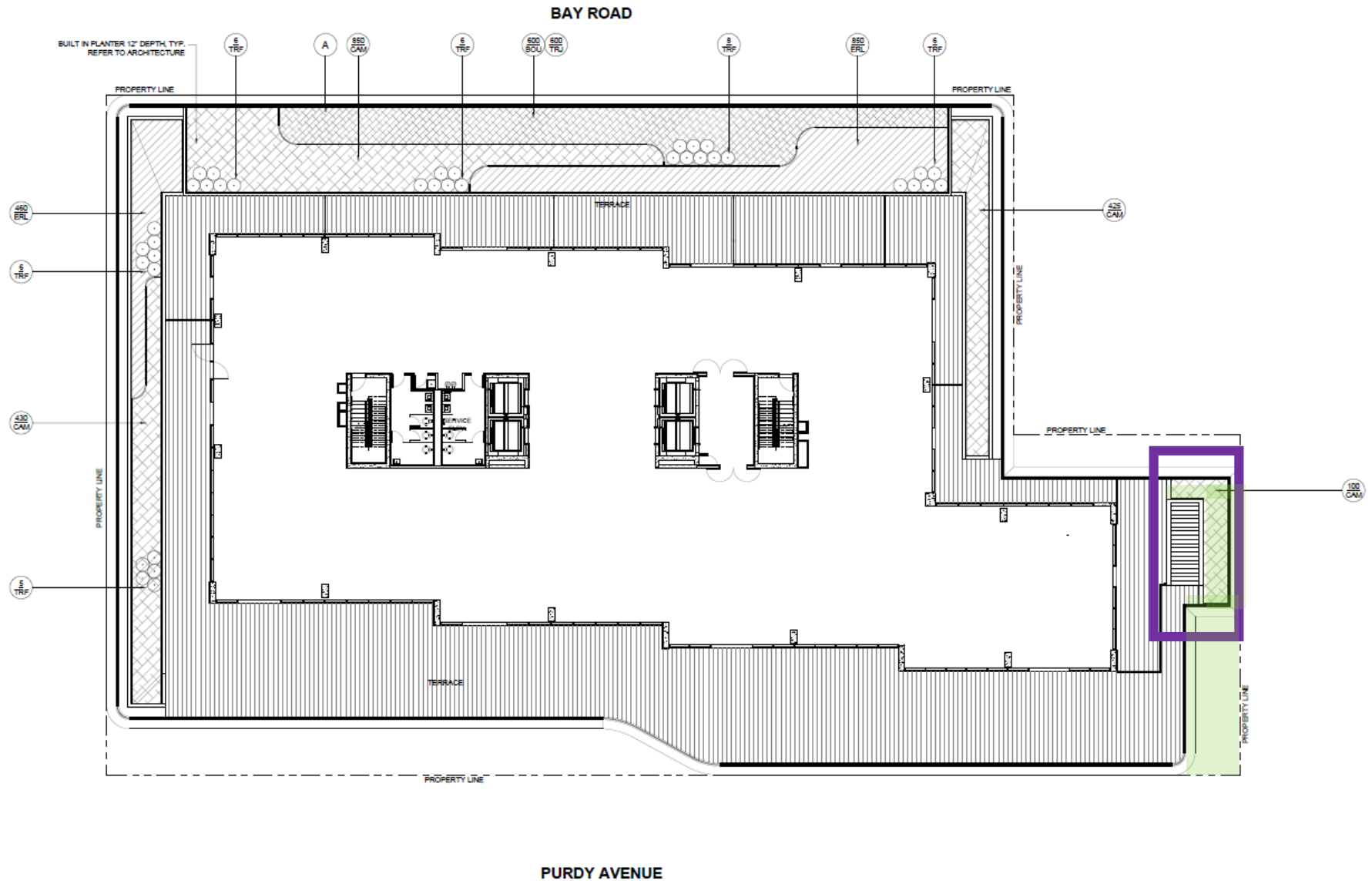


# THIRD FLOOR

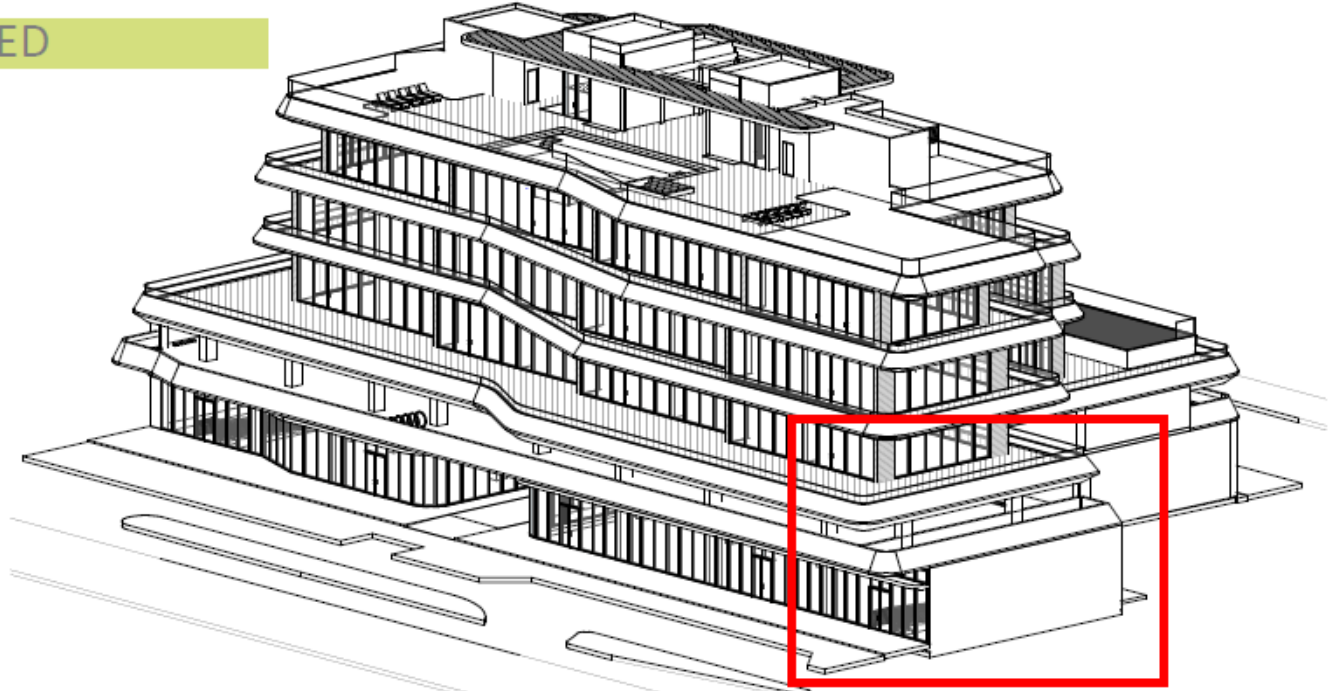




## THIRD FLOOR

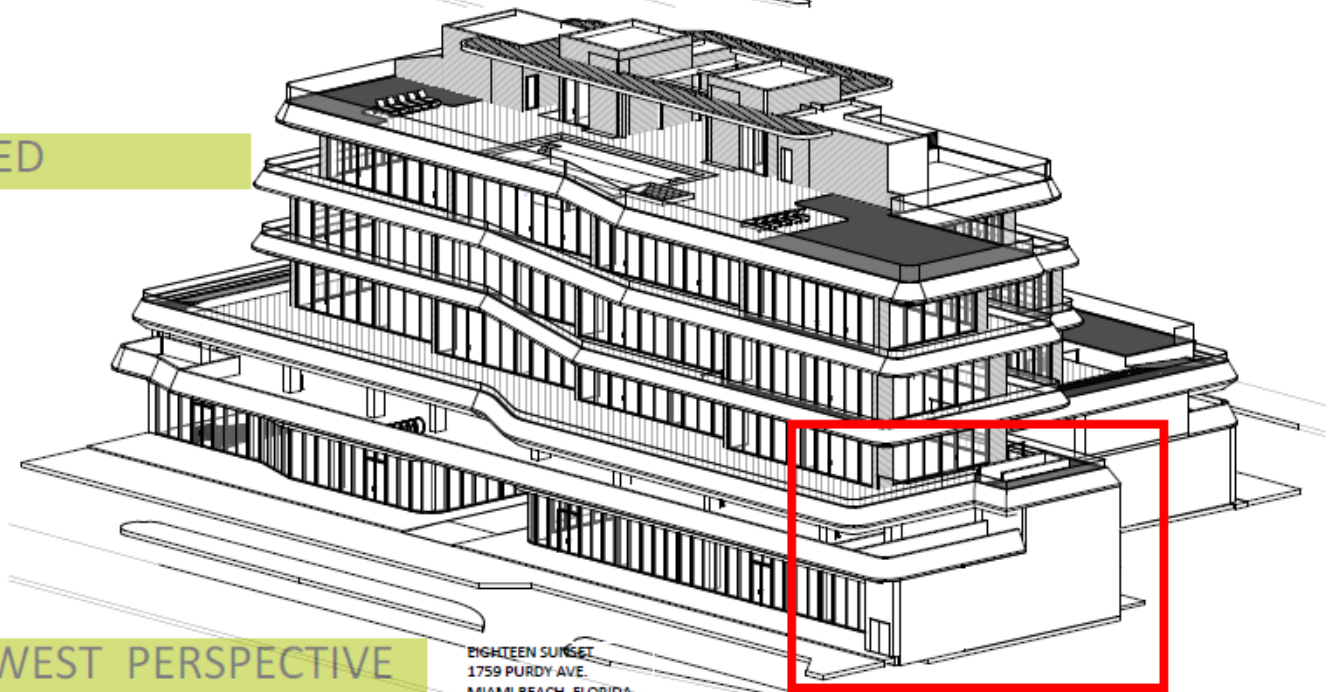


APPROVED



1  
SWP  
SOUTHWEST PERSPECTIVE

PROPOSED



SOUTH WEST PERSPECTIVE

EIGHTEEN SUNSET  
1759 PURDY AVE.  
MIAMI BEACH, FLORIDA  
4/11/22

1  
SWP  
SOUTHWEST PERSPECTIVE

RENDERING BIRDS EYE VIEW

APPROVED





RENDERING BIRDS EYE VIEW

PROPOSED





RENDERING VIEWING EAST

APPROVED





RENDERING VIEWING EAST

PROPOSED



RENDERING VIEWING EAST

PROPOSED





Holland & Knight