

Scale: NTS

TREES/PALMS**			
SYMBOL	QUAN.	PROPOSED MATERIAL	SPECIFICATIONS
AM	2	Adonidia merillii CHRISTMAS PALM	10-12' OA. HT., TRIPLE TRUNK F.G.
BS	4	*Bursera simaruba GUMBO LIMBO	12' HT. X 6" SPR. 2" CAL. F.G.
CR	4	*Clusia guttifera SMALL LEAF CLUSIA	12' HT. X 6" SPR. 2" CAL. F.G.
CD	2	*Coccoloba diversiflora PIGEON PLUM	12' HT. X 6" SPR. 2" CAL. F.G.
CE	67	*Conocarpus erectus GREEN BUTTONWOOD	12' HT. X 6" SPR. 2" CAL. F.G.
CE1	4	*Conocarpus erectus 'serotinus' SILVER BUTTONWOOD	12-14' HT. X 6" SPR. 3" CAL., 4' MIN. C.T. F.G.
ED	6	Elaeocarpus decipiens JAPANESE BLUEBERRY	12-14' HT. X 6" SPR. 2" CAL. F.G., STANDARD
MS	2	*Myrcianthes fragrans SIMPSON'S STOPPER	10' HT. X 5" SPR. 1.5" CAL. F.G.
PD	22	Phoenix dactylifera 'Medjool' MEDJOOl DATE PALM	12' C.T. TO NUT F.G., SPECIMEN
SP	5	*Sabal palmetto SABAL PALM	6-10' C.T., 10-14' O.A. HTS. F.G., STAGGERED HTS.
TR	9	*Thrinax radiata FLORIDA THATCH PALM	6-8' O.A., TRIPLE F.G., TRIPLE TRUNK
SHRUBS AND GROUNDCOVERS			
SYMBOL	QUAN.	PROPOSED MATERIAL	SPECIFICATIONS
AC	192	Aptenia cordifolia BABY SUNROSE	6-8" HT. X 6" SPR. / 12" O.C. 1 GAL.
AD	9	Agave desmettiana SMOOTH BLUE AGAVE	36" HT. X 36" SPR. 15 GAL.
CG	819	*Clusia guttifera SMALL LEAF CLUSIA	36" HT. X 30" SPR. / 30" O.C. 7 GAL.
CG1	201	*Clusia guttifera SMALL LEAF CLUSIA	6-7' HT. X 36" SPR. / 36" O.C. 25 GAL.
CI	50	*Chrysobalanus icaco 'Red Tip' RED TIP COCOPLUM	20" HT. X 18" SPR. / 24" O.C. 3 GAL.
CH	216	*Chrysobalanus icaco 'Horizontalis' HORIZONTAL COCOPLUM	18" HT. X 18" SPR. / 24" O.C. 3 GAL.
EL	64	*Erodia littoralis GOLDEN CREEPER	15" HT. X 12" SPR. / 18" O.C. 1 GAL.
FM	2,192	Ficus microcarpa 'Green Island' GREEN ISLAND FICUS	15' HT. X 15" SPR. / 15" O.C. 3 GAL.
MC	354	*Muhlenbergia capillaris MUHLV GRASS	24" HT. X 24" SPR. / 24" O.C. 3 GAL.
PS	463	*Pennisetum setaceum 'Alba' WHITE FOUNTAIN GRASS	18" HT. X 18" SPR. / 24" O.C. 3 GAL.
SB	1,383	*Spartina bakerii SAND CORDGRASS	24" HT. X 24" SPR. / 24" O.C. 3 GAL.
SM	174	*Sabal minor DWARF SILVER STEM PALMETTO	30" HT. X 30" SPR. / 36" O.C. 7 GAL.
ZP	669	*Zamia pumila COONTIE	18" HT. X 18" SPR. / 24" O.C. 3 GAL.
LAWN	As Required	Stenolaphrum secundatum 'Floratam' ST. AUGUSTINE GRASS	SOLID EVEN SOD

* DENOTES NATIVE SPECIES

** ALL PROPOSED PALMS WERE COUNTED AS LARGE SHRUBS FOR CODE PURPOSES

* DENOTES NATIVE SPECIES
** ALL PROPOSED PALMS WERE COUNTED AS LARGE SHRUBS FOR CODE PURPOSES

Project: **PB FINAL SUBMITTAL**
ONE ISLAND PARK, MIAMI BEACH, FLORIDA
GROUND LEVEL LANDSCAPE PLAN

[illegible]

Seal:

Lic. # LA0000889
Member: A.S.L.A.

Drawing: GROUND LEVEL
LANDSCAPE PLAN

Date: 11/05/2021

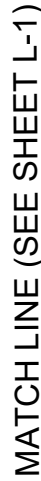
Scale: See Left

Drawn by: EWS

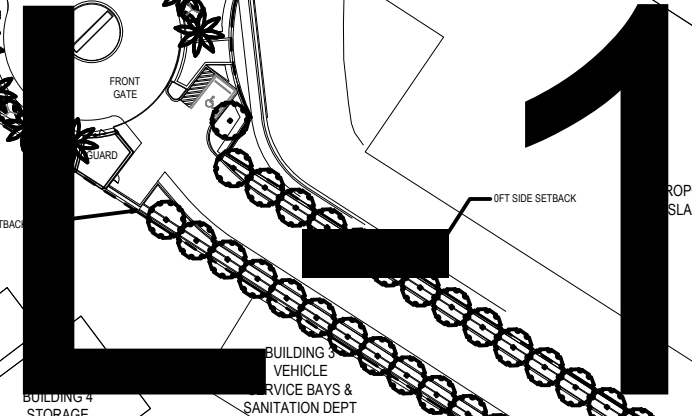
Sheet No.:

L-1

Cad Id.: 2020-020



NORTH

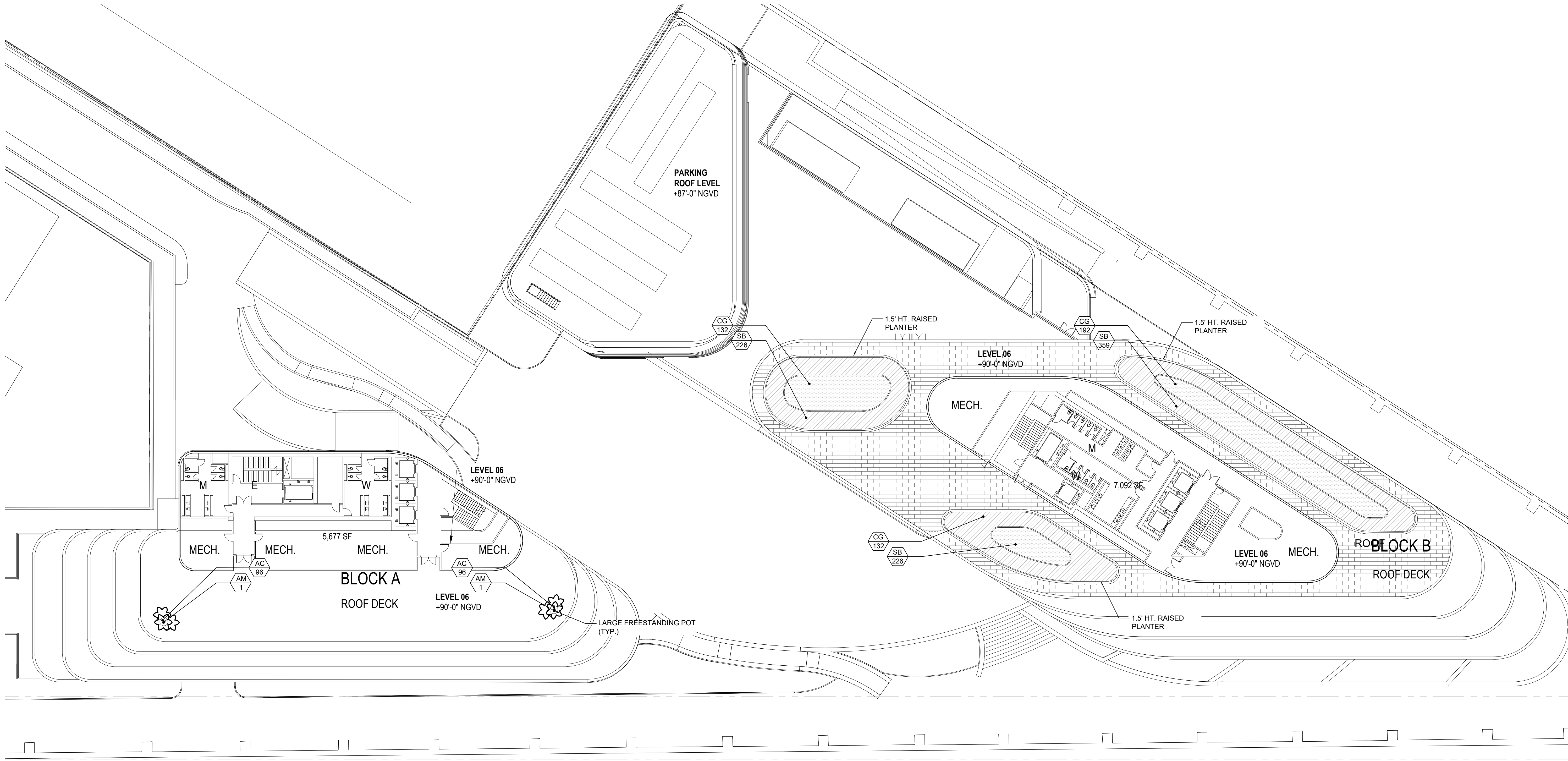


Scale: NTS

Drawing: GROUND LEVEL
LANDSCAPE PLAN
Date: 11/05/2021
Scale: See Left
Drawn by: EWS
Sheet No.:

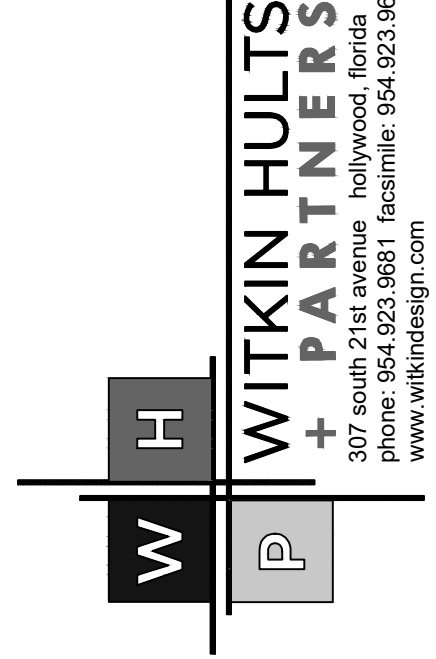
L-2

Cad Id.: 2020-020



ROOF LEVEL LANDSCAPE PLAN

Scale: 1" = 20'-0"



©2020 WITKIN HULTS + PARTNERS
THE DESIGN AND DRAWINGS HEREIN ARE THE
INTELLECTUAL PROPERTY OF THIS
LANDSCAPE ARCHITECT AND ARE PROTECTED
UNDER THE COPYRIGHT PROTECTION ACT

PB FINAL SUBMITTAL
ONE ISLAND PARK, MIAMI BEACH, FLORIDA
ROOF LEVEL LANDSCAPE PLAN

Project

Revisions:	Date:	By:
1) PB First Submittal	11/05/2021	EWS
2) DPB First Submittal	11/15/2021	EWS
3) PB Final Submittal	11/29/2021	EWS

Seal:

Lic. # LA0000889
Member: A.S.L.A.

Drawing: ROOF LEVEL
LANDSCAPE PLAN
Date: 11/05/2021
Scale: See Left
Drawn by: EWS
Sheet No.:

L-3

Cad Id.: 2020-020



- Sod is to be grade "A" weed free.

-All areas marked "LAWN" shall be

- Provide a 2" deep blanket of planting soil as described in planting notes this sheet. Prior to planting, remove stones, sticks, etc. from the sub soil surface. Excavate existing non-conforming soil as required so that the finish grade of sod is flush with adjacent pavement or top of curb as well as adjacent sod in the case of sod patching.

-Place sod on moistened soil, with edges tightly butted, in staggered rows at right angles to slopes.

-Keep edge of sod bed a minimum of 18" away from groundcover beds and 24" away from edge of shrub beds and 36" away from trees, measured from center of plant.

- Sod Shall be watered immediatley after installation to uniformly wet the soil to at least 2" below the bottom of the sod strips.
- Excavate and remove excess soil so top of sod is flush with top of curb or adjacent pavement or adjacent existing sod.

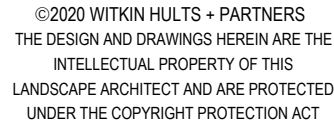
-The Landscape Contractor is to locate and verify all underground and overhead utilities prior to beginning work. Contact proper utility companies and / or General Contractor prior to digging for field verification. The Owner and the Landscape Architect shall not be responsible for any damages to utility or irrigation lines (see Roadway Plans for more utility notes).

-Landscape Contractor is to verify all current drawings and check for discrepancies and bring to the attention of the Landscape Architect prior to commencing with the work.

-All unattended and unplanted tree pits are to be properly barricaded and flagged during installation.

-All planting plans are issued as directives for site layout. Any deviations, site changes, etcetera are to be brought to the attention of the Landscape Architect for clarification prior to installation.

-Contractor shall provide a one year guarantee on all trees and palms.



PB FINAL SUBMITTAL
ONE ISLAND PARK, MIAMI BEACH, FLORIDA
LANDSCAPE NOTES AND DETAILS

Project:

[illegible]

Seal:

Lic. # LA0000889
Member: A.S.L.A.

Drawing: LANDSCAPE NOTES AND
DETAILS
Date: 11/05/2021
Scale: See Left
Drawn by: EWS
Sheet No.:

L-4

Cad Id.: 2020-020