

4541 NORTH BAY ROAD GARDEN

4541 North Bay Road, Miami Beach, FL 33140

FINAL SUBMITTAL 4/11/2022 DRB File. No. DRB22-0795

Prepared for:

4541 NBR LLC  
655 MADISON AVE., 11TH FLOOR  
NEW YORK, NY 10065

Prepared by:

jungles

Raymond Jungles, Inc.  
**Landscape Architect**  
  
2964 Aviation Ave.  
Coconut Grove, FL 33133  
P: 305.858.6777  
www.raymondjungles.com  
Florida License No. LC 000258

		DRB22-0795 FINAL SUBMITTAL (04-11-22)
Sheet #	Drawing Index	
L-000	COVER	•
L-100	TREE DISPOSITION PLAN	•
L-101	TREE DISPOSITION SCHEDULE	•
L-102	TREE DISPOSITION NOTES & DETAILS	•
L-103	HARDSCAPE PLAN	•
L-104	CANOPY PLANTING PLAN	•
L-105	UNDERSTORY PLANTING PLAN - GROUND LEVEL	•
L-106	UNDERSTORY PLANTING PLAN - SECOND LEVEL	•
L-107	PLANT LIST & MITIGATION CHART	•
L-108	LANDSCAPE LEGEND	•
L-109	PLANTING DETAILS	•
L-110	PLANTING NOTES & SPECIFICATIONS	•
L-111	LIGHTING SPECIFICATIONS	•



LEGEND

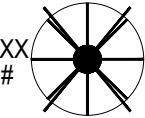
PROPERTY LINE

EXISTING TO BE REMOVED

TREES



PALMS

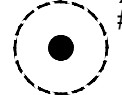


HEDGE



EXISTING TO BE RELOCATED

TREES



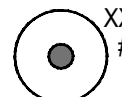
XXX

PALMS



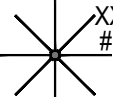
EXISTING OFFSITE TO REMAIN

TREES



XXX

PALMS

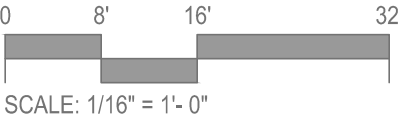


HEDGE

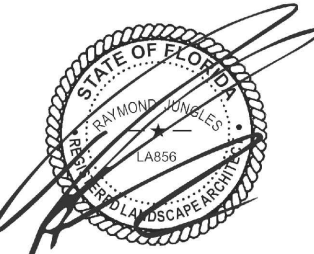


GENERAL NOTES:

1. TREE SURVEY BASED ON ALL AVAILABLE INFORMATION. CONTRACTOR TO REPORT ALL DISCREPANCIES TO LANDSCAPE ARCHITECT FOR REVIEW PRIOR TO CONSTRUCTION. RAYMOND JUNGLES, INC. MAY ASSIST WITH THE TAGGING OF ALL TREES IN THE FIELD.
2. ALL TREES TO BE RELOCATED SHALL BE ROOT PRUNED 60 DAYS PRIOR TO THEIR RELOCATION. RJI WILL ALSO OVERSEE ANY RECOMMENDATIONS FOR FURTHER MODIFICATIONS TO ANY EXISTING MATERIAL.
3. ALL PITS TO BE FILLED THE SAME DAY OF REMOVAL OF TREES. RESTORE SURFACE WITH SOD OR MULCH TO MATCH EXISTING CONDITIONS.
4. CONTRACTOR SHALL VERIFY ALL EXISTING ABOVE AND UNDERGROUND UTILITIES 48 HOURS PRIOR TO ANY ON SITE EXCAVATION.
5. SEE LR.200 FOR TREE DISPOSITION SCHEDULE.
6. REVIEW ADDITIONAL NOTES AND SPECIFICATIONS ON SHEET LR.200 & LR.201 FOR RELOCATED MATERIAL.



OWNER  
4541 NBR LLC  
4541 NORTH BAY ROAD, MIAMI BEACH, FL 33140  
ARCHITECT  
AA 2600998  
O'DONNELL, DANNWOLF AND PARTNERS ARCHITECTS INC. 2432 HOLLYWOOD BLVD  
HOLLYWOOD, FL 33020 T:954.518.0833  
DESIGN CONSULTANT  
SAOTA PTY LTD  
109 HATFIELD STREET, GARDENS, CAPE TOWN, 8001 SOUTH AFRICA  
071021 488 4400  
LANDSCAPE ARCHITECT  
RAYMOND JUNGLES, INC.  
2964 AVIATION AVENUE, COCONUT GROVE, FL 33133  
T:305.666.8777



RAYMOND JUNGLES, INC.  
FL. LANDSCAPE ARCHITECT  
Lic. # LA0000856

THIS ITEM HAS BEEN ELECTRONICALLY SIGNED AND SEALED BY  
RAYMOND JUNGLES LICENSE NUMBER LA0000856. USING A  
DIGITAL SIGNATURE AND DATE. PRINTED COPIES OF THIS  
DOCUMENT ARE NOT CONSIDERED SIGNED AND SEALED AND  
SIGNATURE MUST BE VERIFIED ON ANY ELECTRONIC COPIES.

**jungles**  
RAYMOND JUNGLES INC  
Landscape Architect FASLA

**odp**  
ARCHITECTURE AND DESIGN  
2432 HOLLYWOOD BOULEVARD  
HOLLYWOOD, FLORIDA 33020  
T: 954.518.0833 | F: 954.518.0131  
www.odparchitects.com  
AA 26000996

DESIGN CONSULTANT

**SAOTA**

109 HATFIELD STREET, GARDENS,  
CAPE TOWN, 8001 SOUTH AFRICA  
T: +27(0)21 468 4400 | info@saota.com  
www.saota.com

PROJECT

4541 NORTH BAY RD

4541 NORTH BAY ROAD, MIAMI BEACH, FL 33140

REVISIONS


SCALE: AS NOTED

DATE: 04/11/22  
DRAWN BY: JS  
DRAWING TITLE:

TREE DISPOSITION PLAN

SHEET NO.

L-100



4541 North Bay Road Garden  
4541 North Bay Road, Miami Beach, FL 33140

TREE DISPOSITION SCHEDULE

Per Survey Date 11/01/2021

Existing Trees and Palms				D.B.H. (inch)	O.A. Height (feet)	Canopy Diameter (feet)			
Iden.	Symbol	Scientific Name	Common Name						
#1	Tree does not exist								0
#2	Tree does not exist								0
#3	Tree does not exist								0
#4	Tree does not exist								0
#5	TCA	<i>Tabebuia caraiba</i>	Yellow Trumpet Tree	18	25	30		Remove	18
#6	SMA	<i>Swietenia mahagoni</i>	Mahogany Tree	18	35	25		Remove	18
#7	BAR	<i>Bulnesia arborea</i>	Verawood	4.8	20	10	Offsite	Remain	0
#8	RRE	<i>Roystonea regia</i>	Royal Palm	18	20	8	Offsite	Remain	0
#9	CGU	<i>Clusia sp.</i>	Small Leaf Clusia	hedge	10	5	Offsite	Remain	0
#10	TRA	<i>Thrinax radiata</i>	Green Thatch Palm	6	10	5		Relocate	0
#11	TRA	<i>Thrinax radiata</i>	Green Thatch Palm	6	10	5		Relocate	0
#12	TRA	<i>Thrinax radiata</i>	Green Thatch Palm	7.2	15	6		Relocate	0
#13	SRO	<i>Syagrus romanzoffiana</i>	Queen Palm	8.4	25	12		Remove	(1) Tree
#14	SRO	<i>Syagrus romanzoffiana</i>	Queen Palm	9.6	30	12		Remove	(1) Tree
#15	SRO	<i>Syagrus romanzoffiana</i>	Queen Palm	9.6	25	12		Remove	(1) Tree
#16	PRO	<i>Phoenix roebelenii</i>	Pygmy Date Palm	6 x (3)	12	10	Mitigation not required; Specs do not meet minimum requirements	Remove	0
#17	RRE	<i>Roystonea regia</i>	Royal Palm	20.4	45	15		Remove	(1) Tree
#18	RRE	<i>Roystonea regia</i>	Royal Palm	24	45	15		Remove	(1) Tree
#19	RRE	<i>Roystonea regia</i>	Royal Palm	19.2	45	15		Remove	(1) Tree
#20	RRE	<i>Roystonea regia</i>	Royal Palm	19.2	40	10		Remove	(1) Tree
#21	RRE	<i>Roystonea regia</i>	Royal Palm	24	45	15		Remove	(1) Tree
#22	RRE	<i>Roystonea regia</i>	Royal Palm	24	30	15		Remove	(1) Tree
#23	TRA	<i>Thrinax radiata</i>	Green Thatch Palm	19.2	15	10		Relocate	0
#24	CGU	<i>Clusia sp.</i>	Small Leaf Clusia	hedge	10	5	Mitigation not required; Hedge	Remove	0
#25	DSP	<i>Dracaena sp.</i>	Same	7.2	20	3	Mitigation not required; Shrub	Remove	0
#26	DSP	<i>Dracaena sp.</i>	Same	7.2	20	8	Mitigation not required; Shrub	Remove	0
#27	DSP	<i>Dracaena sp.</i>	Same	8.4	25	3	Mitigation not required; Shrub	Remove	0
#28	PEL	<i>Ptychosperma elegans</i>	Solitaire Palm	3.6	30	8	Mitigation not required; Specs do not meet minimum requirements	Remove	0
#29	DSP	<i>Dracaena sp.</i>	Same	4.8	12	3	Mitigation not required; Shrub	Remove	0
#30	PEL	<i>Ptychosperma elegans</i>	Solitaire Palm	2.5	40	20	Mitigation not required; Specs do not meet minimum requirements	Remove	0
#30	PEL	<i>Ptychosperma elegans</i>	Solitaire Palm	2.5	40	20	Mitigation not required; Specs do not meet minimum requirements	Remove	0
#30	PEL	<i>Ptychosperma elegans</i>	Solitaire Palm	2.5	40	20	Mitigation not required; Specs do not meet minimum requirements	Remove	0
#30	PEL	<i>Ptychosperma elegans</i>	Solitaire Palm	2.5	40	20	Mitigation not required; Specs do not meet minimum requirements	Remove	0
#31	CNU	<i>Cocos nucifera</i>	Coconut Palm	7.4	45	13		Relocate	0
#32	PRO	<i>Phoenix roebelenii</i>	Pygmy Date Palm	2.4	5	2	Mitigation not required; Specs do not meet minimum requirements	Remove	0
#33	PRO	<i>Phoenix roebelenii</i>	Pygmy Date Palm	2.4	7	3	Mitigation not required; Specs do not meet minimum requirements	Remove	0
#34	CNU	<i>Cocos nucifera</i>	Coconut Palm	8.4	35	13		Relocate	0
#35	RRE	<i>Roystonea regia</i>	Royal Palm	12	20	10		Remove	(1) Tree
#36	DSP	<i>Dracaena sp.</i>	Same	3.6	8	5	Mitigation not required; Shrub	Remove	0
#37	DSP	<i>Dracaena sp.</i>	Same	3.6	15	2	Mitigation not required; Shrub	Remove	0
#38	RRE	<i>Roystonea regia</i>	Royal Palm	12	20	15		Remove	(1) Tree
#39	CNU	<i>Cocos nucifera</i>	Coconut Palm	7.2	30	10		Relocate	0
#40	TRA	<i>Thrinax radiata</i>	Green Thatch Palm	7.2	13	10		Relocate	0
#41	CNU	<i>Cocos nucifera</i>	Coconut Palm	8.4	40	15		Relocate	0
#42	CNU	<i>Cocos nucifera</i>	Coconut Palm	8.4	38	15		Relocate	0
Total Tree D.B.H. Removed Requiring Mitigation (inches)									36
Total Palm Removed Requiring Mitigation									11

4541 North Bay Road Garden  
4541 North Bay Road, Miami Beach, FL 33140

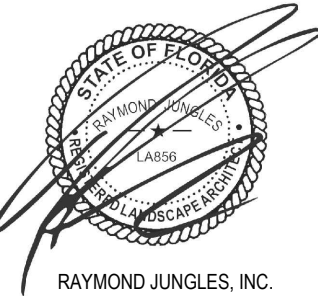
EXISTING TREES					
Total # of Existing Trees:	2	To remain:	0	To be relocated:	0
				To be removed:	2
EXISTING PALMS					
Total # of Existing Palms:	21	To remain:	0	To be relocated:	10
				To be removed:	11

OWNER  
4541 NBR LLC  
4541 NORTH BAY ROAD, MIAMI BEACH, FL 33140

ARCHITECT  
AA 2600999  
O'DONNELL, DANNWOLF AND PARTNERS ARCHITECTS INC. 2432 HOLLYWOOD BLVD  
HOLLYWOOD, FL 33020 T:954.518.0833

DESIGN CONSULTANT  
AA 2600999  
SAOTA PTY LTD  
109 HATFIELD STREET, GARDENS, CAPE TOWN, 8001 SOUTH AFRICA  
T:021 468 4400

LANDSCAPE ARCHITECT  
RAYMOND JUNGLES, INC.  
2964 AVIATION AVENUE, COCONUT GROVE, FL 33133  
T:305.868.6777



RAYMOND JUNGLES, INC.  
FL. LANDSCAPE ARCHITECT  
Lic. # LA0000856

THIS ITEM HAS BEEN ELECTRONICALLY SIGNED AND SEALED BY  
RAYMOND JUNGLES LICENSE NUMBER LA0000856. USING A  
DIGITAL SIGNATURE AND DATE. PRINTED COPIES OF THIS  
DOCUMENT ARE NOT CONSIDERED SIGNED AND SEALED AND  
SIGNATURE MUST BE VERIFIED ON ANY ELECTRONIC COPIES.

jungles  
RAYMOND JUNGLES INC  
Landscape Architect FASLA

odp  
ARCHITECTURE AND DESIGN

2432 HOLLYWOOD BOULEVARD  
HOLLYWOOD, FLORIDA 33020  
T: 954.518.0833 | F:954.518.0131  
www.odparchitects.com  
AA 26000996

DESIGN CONSULTANT  
SAOTA  
109 HATFIELD STREET, GARDENS,  
CAPETOWN, 8001 SOUTH AFRICA  
T: +27(0)21 468 4400 | info@saota.com  
www.saota.com

PROJECT  
4541 NORTH BAY RD

4541 NORTH BAY ROAD, MIAMI BEACH, FL 33140

REVISIONS		

SCALE: AS NOTED  
DATE: 04/11/22  
DRAWN BY: JS  
DRAWING TITLE:

TREE DISPOSITION  
SCHEDULE

SHEET NO.  
L-101



TREE / PALM PROTECTION NOTES

1. CONTRACTOR QUALIFICATIONS

- 1.1. CONTRACTOR MUST BE A LICENSED LANDSCAPE CONTRACTOR.
- 1.2. CONTRACTOR MUST HAVE A MINIMUM OF 10 YEARS OF PROVEN EXPERIENCE RELOCATING LARGE SPECIMEN TREES AND PALMS IN SOUTH FLORIDA.
- 1.3. CONTRACTOR MUST HAVE PROVEN EXPERIENCE RELOCATING TREES AND PALMS OF THE SAME SPECIES AND SIZE AS THOSE TO BE RELOCATED FOR THE CURRENT PROJECT.
- 1.4. CONTRACTOR MUST HAVE A CERTIFIED ARBORIST ON STAFF.

2. CONTRACTOR REQUIREMENTS

- 2.1. CONTRACTOR MUST VISIT THE JOBSITE AND INSPECT ALL TREES AND PALMS TO BE RELOCATED AS WELL AS EXISTING SITE CONDITIONS AND RESTRICTIONS PRIOR TO PREPARING BID.
- 2.2. CONTRACTOR MUST VERIFY AND ENSURE THAT ALL TREES AND PALMS IDENTIFIED ON THE PLANS AND THOSE TAGGED ON THE JOBSITE CORRESPOND AS TO NUMBER AND DESCRIPTION. ANY DISCREPANCIES MUST BE BROUGHT TO THE ATTENTION OF THE LANDSCAPE ARCHITECT IMMEDIATELY PRIOR TO PREPARING BID.
- 2.3. CONTRACTOR MUST CONDUCT ALL WORK ASSOCIATED WITH RELOCATION AND MAINTENANCE OF TREES AND PALMS TO BE RELOCATED. NO WORK IS TO BE SUBCONTRACTED WITHOUT PRIOR WRITTEN CONSENT OF THE OWNER AND/OR LANDSCAPE ARCHITECT.
- 2.4. CONTRACTOR MUST DESIGNATE A COMPETENT, ENGLISH-SPEAKING SUPERVISOR OR FOREMAN TO OVERSEE AND DIRECT ALL RELOCATION AND MAINTENANCE ACTIVITIES AS OUTLINED IN THESE SPECIFICATIONS.
- 2.5. CONTRACTOR MUST SCHEDULE ROOT PRUNING TO PROVIDE THE MAXIMUM POSSIBLE TIME FOR NEW ROOT GROWTH. EVEN TREES AND PALMS THAT TYPICALLY DO NOT REQUIRE LONG (OR ANY) ROOT PRUNING WILL BENEFIT FROM MORE ROOT PRUNING TIME; THEREFORE, ALL TREES AND PALMS TO BE RELOCATED MUST BE ROOT PRUNED. CONTRACTOR MUST PROVIDE A ROOT PRUNE SCHEDULE FOR EACH TREE OR PALM TO BE RELOCATED AS AN ATTACHMENT TO THE BID.
- 2.6. CONTRACTOR MUST CALL SUNSHINE 811 TO HAVE ALL UNDERGROUND UTILITIES LOCATED UNDER OR IN THE VICINITY OF THE CURRENT OR FUTURE LOCATIONS OF ALL TREES AND PALMS TO BE RELOCATED PRIOR TO WORK COMMENCING.
- 2.7. CONTRACTOR MUST VERIFY WITH THE GENERAL CONTRACTOR THE ABSENCE OF ANY UNDERGROUND CONSTRUCTION OR OBSTRUCTIONS (E.G., BULKHEADS, SEPTIC SYSTEMS, ETC.) IN THE CURRENT AND FUTURE LOCATIONS OF ALL TREES AND PALMS TO BE RELOCATED.
- 2.8. CONTRACTOR MUST ALERT THE LANDSCAPE ARCHITECT OF ANY TREES OR PALMS THAT WILL NOT SUCCESSFULLY RELOCATE DUE TO POOR HEALTH PRIOR TO BEGINNING ROOT PRUNING.
- 2.9. CONTRACTOR MUST FLAG ALL PROPOSED TRANSPLANT LOCATIONS FOR THE LANDSCAPE ARCHITECT'S APPROVAL A MINIMUM OF 15 DAYS PRIOR TO RELOCATION.
- 2.10. CONTRACTOR MUST ENSURE THAT ALL TREES AND PALMS TO BE RELOCATED ARE INSTALLED AT THE CORRECT GRADE OR ELEVATION, ACCORDING TO THE GRADING PLAN.
- 2.11. CONTRACTOR MUST ENSURE THAT ALL ROOT FLARES ARE EXPOSED AFTER RELOCATION.
- 2.12. CONTRACTOR MUST REMOVE ALL RESIDUAL ROOTS, STUMPS, AND PORTIONS THEREOF AND BACKFILL PITS FROM WHICH RELOCATED TREES AND PALMS WERE REMOVED WITH CLEAN FILL FLUSH WITH THE SURROUNDING GRADE.
- 2.13. CONTRACTOR MUST REPAIR ANY DAMAGE TO OTHER PLANTS, LAWN, HARDSCAPES, OR NEW CONSTRUCTION WITHIN THE RELOCATION AREA AT CONTRACTOR'S EXPENSE. HARDSCAPES INCLUDE BUT ARE NOT LIMITED TO CURBS, WALKS, ROADS, FENCES, SITE FURNISHINGS, ETC.
- 2.14. CONTRACTOR MUST PHOTOGRAPHICALLY DOCUMENT NEW ROOT GROWTH FOLLOWING EACH ROOT PRUNE AND SUBMIT THIS DOCUMENTATION TO THE LANDSCAPE ARCHITECT. THE PURPOSE OF THIS REQUIREMENT IS TO ENSURE THAT SUFFICIENT ROOT GROWTH HAS OCCURRED PRIOR TO THE SECOND AND SUBSEQUENT ROOT PRUNES AND FOLLOWING THE FINAL ROOT PRUNE PRIOR TO RELOCATION.
- 2.15. CONTRACTOR MUST INSTALL AND MAINTAIN PROTECTION FENCING AROUND EACH TREE AND PALM TO BE RELOCATED BOTH DURING ROOT PRUNING AND AFTER RELOCATION. PROTECTION FENCING MUST CONSIST OF GALVANIZED WELDED WIRE FABRIC OR PLASTIC MESH ATTACHED TO 4" X 4" POSTS ORBOLTS, AND A MINIMUM PERIMETER OF THE DRIFLINE OF THE TREE OR PALM. PROTECTION FENCING MUST BE PLUMB, TAUT, AND STURDY AT ALL TIMES AND MUST REMAIN IN PLACE THROUGHOUT THE ROOT PRUNING AND WARRANTY PERIODS, OR AS DIRECTED BY THE LANDSCAPE ARCHITECT.
- 2.16. CONTRACTOR MUST OBTAIN ALL NECESSARY OR REQUIRED PERMITS FOR THE RELOCATION AND TRANSPORTATION OF THE TREES AND PALMS TO BE RELOCATED.
- 2.17. CONTRACTOR MUST REPLACE ANY TREES OR PALMS SCARRED OR DAMAGED DURING RELOCATION, AT THE CONTRACTOR'S EXPENSE, WITH THE SAME OR SIMILAR SPECIES, SIZE, AND QUALITY. REPLACEMENT TREES OR PALMS MUST BE APPROVED BY THE LANDSCAPE ARCHITECT PRIOR TO PROCUREMENT, PREPARATION, AND/OR INSTALLATION. REPLACEMENT TREES AND PALMS MUST BE INSTALLED WITHIN 60 DAYS OF NOTICE.
- 2.18. CONTRACTOR MUST GUARANTEE ALL RELOCATED TREES AND PALMS FOR ONE YEAR FROM THE DATE OF RELOCATION TO THE FINAL LOCATION. GUARANTEE MUST INCLUDE TREE HEALTH AND SETTLING.
- 2.19. CONTRACTOR MUST PROVIDE ALL MATERIAL NECESSARY TO PERFORM THE WORK COVERED HEREIN, INCLUDING BUT NOT LIMITED TO BACKFILL MATERIAL, PROTECTION FENCING, FLAGGING, ADDITIVES AND SUPPLEMENTS, TEMPORARY IRRIGATION, BURLAP, WIRE, SHRINK WRAP, AND ALL NECESSARY TOOLS AND EQUIPMENT.

3. ROOT PRUNING SPECIFICATIONS

3.1. GENERAL

- 3.1.1. ALL TREES AND PALMS TO BE RELOCATED MUST BE WATERED DAILY FOR AT LEAST 2-3 DAYS PRIOR TO ANY ROOTS BEING CUT TO ENSURE THAT THEY ARE FULLY HYDRATED. EACH WATERING MUST THOROUGHLY SATURATE THE ROOTBALL TO ITS FULL DEPTH.
- 3.1.2. EACH TREE AND PALM MUST THEN BE WATERED EVERY OTHER DAY, NOT RELYING ON RAIN. DURING THE ENTIRE ROOT PRUNING PROCESS EITHER BY A TEMPORARY IRRIGATION SYSTEM OR BY HAND, EACH WATERING MUST THOROUGHLY SATURATE THE ROOTBALL TO ITS FULL DEPTH.
- 3.1.3. TREE AND PALM RELOCATION ACTIVITIES MUST BE SCHEDULED SO THAT REMOVAL AND REPLANTING TAKE PLACE IN THE SAME 24-HOUR PERIOD. NO TREES OR PALMS MAY BE "STOCKPILED" ONSITE OR OFFSITE FOR ANY PERIOD OF TIME WITHOUT PRIOR WRITTEN APPROVAL OF THE LANDSCAPE ARCHITECT. WHEN ALLOWED, APPROVAL FOR THE METHOD OF "STOCKPILING" MUST BE OBTAINED FROM THE LANDSCAPE ARCHITECT.
- 3.1.4. ALL DIGGING IN THE ROOT ZONE DURING THE ROOT PRUNE PROCESS MUST BE DONE BY HAND; NO MACHINERY WILL BE ALLOWED. PRUNING OF ROOTS MUST BE DONE BY HAND WITH CLEAN, SHARP TOOLS. DO NOT PAINT CUT ROOTS WITH TREE PAINT OR ANY KIND OF SEALANT.
- 3.1.5. MYCORRHIZA (ROOTS®) TRANSPLANT OR EQUIVALENT MUST BE INCORPORATED INTO THE BACKFILL SOIL PRIOR TO BACKFILLING AS PER MANUFACTURER'S RECOMMENDATIONS.
- 3.1.6. AFTER EACH ROOT PRUNE, EACH SECTION OF ROOTBALL THAT IS PRUNED MUST BE WRAPPED WITH BLACK PLASTIC AND THE TRENCH BACKFILLED WITH ORIGINAL EXCAVATED SOIL. A TREE RING WITH A MINIMUM HEIGHT OF 6" MUST BE CONSTRUCTED 6-12" OUTSIDE THE OUTERMOST EDGE OF THE ROOTBALL AND AROUND THE ENTIRE PERIMETER OF THE ROOTBALL TO DIRECT IRRIGATION WATER AND ANY ADDED SUPPLEMENTS DOWN INTO THE ROOTBALL DURING ROOT REGENERATION.
- 3.1.7. ONCE THE TREE RING IS CONSTRUCTED AFTER EACH ROOT PRUNE, A HIGH-PHOSPHORUS ROOT STIMULANT MUST BE LIBERALLY APPLIED TO THE SURFACE OF THE ROOTBALL AND THOROUGHLY WATERED IN TO ENCOURAGE NEW ROOT GROWTH.

3.2. TREES

- 3.2.1. PRIOR TO ANY ROOTS BEING CUT, ALL MAJOR ROOTS MUST BE IDENTIFIED TO DETERMINE THE ROOTBALL DIAMETER BASED ON THE RELATIVE LOCATION AND SIZE OF THE ROOTS.
- 3.2.2. MANY TREE RELOCATION SPECIFICATIONS USE "GENERAL RULES" TO CALCULATE MINIMUM ROOTBALL DIAMETER, SUCH AS MULTIPLYING THE DIAMETER AT BREAST HEIGHT (DBH) OF THE TREE BY A FACTOR OF 10 OR ALLOWING A MINIMUM OF 9"-12" OF ROOTBALL FOR EVERY 1" OF TREE CALIPER. OTHERS LIST UNREALISTIC MINIMUM SIZES FOR THE ROOTBALLS OF VARIOUS TREE CALIPERS OR HEIGHTS. IN MANY CASES, SUCH APPROACHES RESULT IN ROOTBALLS THAT ARE EITHER TOO LARGE OR TOO SMALL FOR A GIVEN TREE. THE FOLLOWING TABLE LISTS MINIMUM ROOTBALL DIAMETERS BASED ON REAL-WORLD EXPERIENCE OF TREE RELOCATION SPECIALISTS IN SOUTH FLORIDA:

CALIPER (inches)	MIN. ROOTBALL DIA. (feet)	CALIPER (inches)	MIN. ROOTBALL DIA. (feet)
1 - 4	3	12 - 14	8
4 - 5	4	15 - 17	10
6 - 7	5	18 - 24	12 - 15
8 - 9	6	25 - 30	15 - 25
10 - 11	7	30 +	as needed

- 3.2.3. WHENEVER POSSIBLE, ROOTBALLS MUST BE CIRCULAR IN SHAPE WITH AN EQUAL DISTANCE FROM THE TRUNK TO THE EDGE OF THE ROOTBALL ALL AROUND.
- 3.2.4. MINIMUM ROOTBALL DEPTH MUST BE 24"-36" FOR ALL TREES TO BE RELOCATED, WITH THE ACTUAL DEPTH TO BE DETERMINED ONLY AFTER A THOROUGH EXAMINATION OF ALL ROOTS DURING THE INITIAL ROOT INSPECTION AND BASED ON THE ABSENCE OF MAJOR ROOTS AT THE BOTTOM OF THE ROOTBALL. ROOTBALLS DEEPER THAN 36" MAY BE REQUIRED FOR LARGE SPECIMEN TREES, DEPENDING ON THE RELATIVE LOCATIONS AND DEPTHS OF THE MAJOR ROOTS AS OBSERVED DURING THE INITIAL ROOT INSPECTION.

- 3.2.5. AS A GENERAL RULE, MINIMUM ROOT PRUNE TIME FOR TREES WITH A DBH OF LESS THAN 10" IS 12 WEEKS. THE FIRST ROOT PRUNE MUST BE ON TWO OPPOSING SIDES OF THE ROOTBALL, WITH THE SECOND ROOT PRUNE ON ONE OF THE OTHER TWO SIDES DONE A MINIMUM OF 6 WEEKS LATER, AND A THIRD ROOT PRUNE ON THE LAST SIDE DONE A MINIMUM OF 3 WEEKS AFTER THAT. THE SECOND AND THIRD ROOT PRUNES MAY ONLY BE DONE WHEN HEALTHY NEW ROOT GROWTH FROM EARLIER ROOT PRUNES IS EVIDENT (SEE SECTION 2.14 ABOVE FOR SPECIFICATIONS ON PHOTOGRAPHICALLY DOCUMENTING NEW ROOT GROWTH DURING THE ROOT PRUNE PROCESS). MORE TIME MAY BE NEEDED DURING THE COOLER MONTHS OF THE YEAR.
- 3.2.6. AS A GENERAL RULE, MINIMUM ROOT PRUNE TIME FOR TREES WITH A DBH OF 10" OR GREATER IS 24 WEEKS. THE FIRST ROOT PRUNE MUST BE ON TWO OPPOSING SIDES OF THE ROOTBALL, WITH THE SECOND ROOT PRUNE ON ONE OF THE OTHER TWO SIDES DONE A MINIMUM OF 12 WEEKS LATER, AND A THIRD ROOT PRUNE ON THE LAST SIDE DONE A MINIMUM OF 6 WEEKS AFTER THAT. THE SECOND AND THIRD ROOT PRUNES MAY ONLY BE DONE WHEN HEALTHY NEW ROOT GROWTH FROM EARLIER ROOT PRUNES IS EVIDENT (SEE SECTION 2.14 ABOVE FOR SPECIFICATIONS ON PHOTOGRAPHICALLY DOCUMENTING NEW ROOT GROWTH DURING THE ROOT PRUNE PROCESS). MORE TIME MAY BE NEEDED DURING THE COOLER MONTHS OF THE YEAR.
- 3.2.7. CERTAIN HARDWOOD TREES AND GYMNOSPERMS REQUIRE LONGER ROOT PRUNING TIMES. THESE INCLUDE, BUT ARE NOT LIMITED TO, THE FOLLOWING:
- AVOCADO (PERSEA AMERICANA)
  - BLACK OLIVE (BUCIDA BUCERAS)
  - BRIDALVEIL (CAESALPINIA GRANADILLO)
  - CASSIAS (ALL SPECIES OF CASSIA)
  - LIGNUM VITAE (GUAICACUM SANCTUM & G. OFFICINALE)
  - PODOCARPUS (PODOCARPUS SP.)
  - LIVE OAK (QUERCUS VIRGINIANA)
  - MAHOGANY (SWIENTENIA MAHAGONI)
  - MANGO (MANGIFERA INDICA)
  - PIGEON PLUM (COCOLOBIA DIVERSIFOLIA)
  - SWEET ACACIA (ACACIA FARNESIANA)
  - VERAWOOD (BULNESIA ARBOREA)
  - WILD TAMARIND (LYSILOMA LATISILIQUUM & L. SABICU)

FOR THESE TREES, THE MINIMUM ROOT PRUNE TIMES DISCUSSED IN SECTIONS 3.2.5 AND 3.2.6 ABOVE MAY BE INSUFFICIENT. ONLY WHEN SUFFICIENT NEW ROOT GROWTH HAS TAKEN PLACE FOLLOWING AN EARLIER ROOT PRUNE CAN THE NEXT ROOT PRUNE BE DONE, AND ONLY WHEN SUFFICIENT NEW ROOT GROWTH HAS TAKEN PLACE FOLLOWING THE FINAL ROOT PRUNE MAY THE TREE BE RELOCATED (SEE SECTION 2.14 ABOVE FOR SPECIFICATIONS ON PHOTOGRAPHICALLY DOCUMENTING NEW ROOT GROWTH DURING THE ROOT PRUNE PROCESS).

3.3. PALMS

- 3.3.1. THE FOLLOWING TABLE LISTS MINIMUM ROOTBALL DIAMETERS FOR VARIOUS SPECIES OF PALMS BASED ON REAL-WORLD EXPERIENCE OF RELOCATION SPECIALISTS IN SOUTH FLORIDA:

PALM SPECIES	ROOTBALL SPECIFICATIONS
SABAL / CABBAGE PALM	36" diameter
QUEEN & FOXTAIL PALMS	12" from trunk in all directions
ROYAL & COCONUT PALMS	18 - 24" from trunk in all directions
CANARY DATE PALM	24" from trunk in all directions
SLOW-GROWING PALMS (see sec. 3.3.4)	24" from trunk in all directions
3.3.2. PALM ROOTBALLS MUST BE A MINIMUM OF 24" DEEP. WHENEVER POSSIBLE, ROOTBALLS MUST BE CIRCULAR IN SHAPE WITH AN EQUAL DISTANCE FROM THE TRUNK TO THE EDGE OF THE ROOTBALL ALL AROUND..	
3.3.3. AS A GENERAL RULE, MINIMUM ROOT PRUNE TIME FOR PALMS IS 6-8 WEEKS. THE FIRST ROOT PRUNE MUST BE ON TWO OPPOSING SIDES OF THE ROOTBALL, WITH THE SECOND ROOT PRUNE ON ONE OF THE OTHER TWO SIDES DONE A MINIMUM OF 3-4 WEEKS LATER, AND A THIRD ROOT PRUNE ON THE LAST SIDE DONE A MINIMUM OF 4-5-6 WEEKS AFTER THAT. THE SECOND AND THIRD ROOT PRUNES MAY ONLY BE DONE WHEN HEALTHY NEW ROOT GROWTH FROM EARLIER ROOT PRUNES IS EVIDENT (SEE SECTION 2.14 ABOVE FOR SPECIFICATIONS ON PHOTOGRAPHICALLY DOCUMENTING NEW ROOT GROWTH DURING THE ROOT PRUNE PROCESS). MORE TIME MAY BE NEEDED DURING THE COOLER MONTHS OF THE YEAR.	
3.4. CERTAIN PALMS, IN PARTICULAR THOSE THAT ARE SLOW GROWING, REQUIRE LONGER ROOT PRUNING TIME. THESE INCLUDE, BUT ARE NOT LIMITED TO, THE FOLLOWING:	
· ALL SPECIES OF ARCHONTOPHOENIX	
· ALL SPECIES OF CORYPHA	
· AMERICAN OIL PALMS (ALL SPECIES OF ATTALAEA)	
· BISMARK PALM (BISMARCKIA NOBILIS)	
· CUBAN & CARIBBEAN COCONUTS	
· CUBAN BELLY PALM (GASTROCOCOCCUS CRISPA)	
· GINGERBREAD/DOOM PALMS (ALL SPECIES OF HYPHAENE)	
· PALMYRA PALMS (ALL SPECIES OF BORASSUS)	
· SATAKE PALM (SATAKENTIA LUKIUNENSIS)	
· SAW PALMETTO (SERENOA REPENS)	
· SILVER PALM (COCOCHTHRINAX ARGENTATA)	
· ZOMBIE PALM (ZOMBIA ANTILLARUM)	

FOR THESE PALMS, THE MINIMUM ROOT PRUNING TIME IS 4-6 MONTHS OR GREATER. ONLY WHEN SUFFICIENT NEW ROOT GROWTH HAS TAKEN PLACE FOLLOWING AN EARLIER ROOT PRUNE CAN THE NEXT ROOT PRUNE BE DONE, AND ONLY WHEN SUFFICIENT NEW ROOT GROWTH HAS TAKEN PLACE FOLLOWING THE FINAL ROOT PRUNE MAY THE TREE BE RELOCATED (SEE SECTION 2.14 ABOVE FOR SPECIFICATIONS ON PHOTOGRAPHICALLY DOCUMENTING NEW ROOT GROWTH DURING THE ROOT PRUNE PROCESS).

4. CANOPY PRUNING SPECIFICATIONS

4.1. TREES

- 4.1.1. PRIOR TO RELOCATION, THE CANOPY OF EACH TREE TO BE RELOCATED MUST BE SELECTIVELY PRUNED TO REMOVE CROSSING, DEAD, DISEASED, BROKEN, AND LOW-HANGING BRANCHES THAT MAY INTERFERE WITH CONSTRUCTION ACTIVITIES, OR THAT MAY INTERFERE OR RESTRICT STRAPPING OR LIFTING THE TREE DURING RELOCATION.
- 4.1.2. FOR TREES BEING RELOCATED ONSITE, THE CANOPY MAY BE SELECTIVELY THINNED AND REDUCED BY NO MORE THAN 1/3 OF THE OVERALL CANOPY MASS, AT THE DIRECTION OF THE LANDSCAPE ARCHITECT; HOWEVER, THE BASIC SHAPE, FORM, AND CHARACTER OF THE TREE MUST BE PRESERVED.
- 4.1.3. FOR TREES BEING RELOCATED OFFSITE, THE CANOPY MUST BE PRUNED, AT THE DIRECTION OF THE LANDSCAPE ARCHITECT, TO FIT ON THE TRAILER FOR TRANSPORT. EVERY EFFORT MUST BE MADE TO RETAIN AS MANY LARGE BRANCHES AS POSSIBLE AND TO PRESERVE AS MUCH OF THE SHAPE, FORM, AND CHARACTER OF THE TREE AS POSSIBLE TO THE WIDEST LOAD WIDTH ALLOWABLE BY THE FLORIDA DEPARTMENT OF TRANSPORTATION. CONTRACTOR MUST OBTAIN ALL NECESSARY PERMITS AND ESCORTS TO TRANSPORT WIDE LOADS, PER FLORIDA LAW.
- 4.1.4. ALL CANOPY PRUNING MUST BE CONDUCTED FOLLOWING ANSI A-300 TREE PRUNING STANDARDS AND BEST MANAGEMENT PRACTICES.
- 4.1.5. ALL DEBRIS GENERATED DURING CANOPY PRUNING MUST BE REMOVED OFFSITE AND DISPOSED.

4.2. PALMS

- 4.2.1. IT IS WELL KNOWN THAT SOME PALMS SURVIVE RELOCATION BETTER WHEN ALL OF THE LEAVES ARE REMOVED (E.G., CABBAGE PALM, SABAL PALMETTO); AND THAT OTHER PALMS BENEFIT FROM HAVING THEIR LEAVES CUT IN HALF DURING RELOCATION (E.G., COCONUT PALM, COKOS NUCIFERA). BOTH OF THESE HORTICULTURAL PRACTICES, WHILE TRUE, ARE ONLY APPLICABLE WHEN PALMS ARE NOT ROOT PRUNED. LEAVES DO NOT NEED TO BE CUT IN HALF OR REMOVED FROM PALMS THAT ARE ADEQUATELY ROOT PRUNED. ON OCCASION WHEN SUFFICIENT ROOT PRUNING TIME IS NOT AVAILABLE, PALMS TO BE RELOCATED MAY HAVE THEIR LEAVES CUT IN HALF OR REMOVED ENTIRELY AT THE DIRECTION OF THE LANDSCAPE ARCHITECT.
- 4.2.2. PALM LEAVES MUST BE TIED UP WITH 2-PLY BIODEGRADABLE TWINE PRIOR TO RELOCATION TO PREVENT MECHANICAL DAMAGE DURING THE RELOCATION PROCESS.
- 4.2.3. PALM TRUNKS SHALL ONLY BE "CLEANED UP" ACCORDING TO THE LANDSCAPE ARCHITECT'S SPECIFICATIONS SPECIFIC TO EACH PALM.

5. RELOCATION SPECIFICATIONS

5.1. GENERAL

- 5.1.1. LANDSCAPE CONTRACTOR TO FLAG ALL PROPOSED PLANT LOCATIONS FOR LANDSCAPE ARCHITECT'S APPROVAL PRIOR TO INSTALLATION. NOTIFY LANDSCAPE ARCHITECT A MINIMUM OF 15 DAYS PRIOR TO REVIEW.
- 5.1.2. ALL TREES AND PALMS TO BE RELOCATED MUST BE WATERED DAILY FOR AT LEAST 5 DAYS PRIOR TO ANY RELOCATION TO ENSURE THAT THEY ARE FULLY HYDRATED. EACH WATERING MUST THOROUGHLY SATURATE THE ROOTBALL TO ITS FULL DEPTH.
- 5.1.3. ALL ROOTBALLS MUST BE WRAPPED IN BURLAP AND THEN TIGHTLY WIRE-WRAPPED (USING REDLINE HORSE WIRE OR EQUIVALENT) TO KEEP THE ENTIRE ROOTBALL INTACT DURING RELOCATION. TREES AND PALMS GROWING IN LIMESTONE MUST BE DUG AND RELOCATED WITH THE ROOTS ATTACHED TO A SECTION OF ROCK AS PART OF THE ROOTBALL, SUCH THAT THE ROOTS REMAIN INTACT. ROOTBALLS COMING FROM SAND OR SANDY SOIL MAY ALSO NEED TO BE BOXED PRIOR TO RELOCATION. AT THE DISCRETION OF THE LANDSCAPE ARCHITECT.
- 5.1.4. TREES AND PALMS BEING RELOCATED OFFSITE MUST HAVE THEIR ENTIRE ROOTBALLS THOROUGHLY AND TIGHTLY WRAPPED WITH PLASTIC SHRINK WRAP ON THE OUTSIDE OF THE WIRE WRAP, AND THE ENTIRE TREE OR PALM (INCLUDING CANOPY, TRUNK, AND ROOTBALL) MUST BE COVERED WITH A BREATHABLE TARP (E.G., SHADE CLOTH) DURING TRANSPORT.
- 5.1.5. NEW PLANTING PITS FOR RELOCATED TREES AND PALMS MUST BE PREPARED PRIOR TO LIFTING THE PALM OR TREE FROM ITS CURRENT LOCATION AND MUST BE AT LEAST 3-4 FEET WIDER THAN THE ROOTBALL AND THE SAME DEPTH AS THE ROOTBALL, SUCH THAT THE FINAL ELEVATION OF THE TOP OF THE ROOTBALL IS AT OR SLIGHTLY ABOVE (NO MORE THAN 2" HIGHER) FINAL GRADE.
- 5.1.6. TREES AND PALMS TO BE RELOCATED MUST BE LIFTED BY THE ROOTBALL ONLY, USING APPROPRIATELY SIZED (LENGTH AND STRENGTH) LIFTING STRAPS OR CHAINS. DURING LIFTING, THE TREE OR PALM MUST BE BALANCED IN A MORE-OR-LESS UPRIGHT POSITION, WITH THE STRAP ON THE TRUNK USED ONLY FOR BALANCING AND MANEUVERING THE TREE OR PALM INTO POSITION. NO CHAINS MAY BE USED AROUND OR AGAINST THE TRUNK AT ANY TIME. AT NO TIME SHALL 100% OF THE WEIGHT OF THE TREE OR PALM BE ON THE STRAP ATTACHED TO THE TRUNK. TRUNKS MUST BE HEAVILY PADDED WITH 30-60 LAYERS (DEPENDING ON SIZE AND WEIGHT) OF BURLAP BENEATH THE BALANCING STRAP.
- 5.1.7. TREES AND PALMS MUST BE LIFTED WITH A CRANE OR BACKHOE APPROPRIATELY SIZED FOR THE SIZE AND WEIGHT OF THE TREE OR PALM AND LIFTED OR CARRIED DIRECTLY TO THE FINAL INSTALLATION LOCATION OR TRANSPORT TRAILER.
- 5.1.8. ONCE LIFTING BEGINS, ANY UNCUT ROOTS UNDER OR AROUND THE ROOTBALL THAT MAY YET REMAIN MUST BE IMMEDIATELY SEVERED WITH HAND PRUNING TOOLS TO MINIMIZE TEARING AND ROOT DAMAGE.
- 5.1.9. AGRIFORM PLANTING TABLETS (OR APPROVED EQUIVALENT) MUST BE EVENLY DISTRIBUTED AROUND THE PERIMETER OF THE PLANTING PIT AT THE RATE OF 2 TABLETS PER 1" TRUNK CALIPER PRIOR TO BACKFILLING.
- 5.1.10. MYCORRHIZA (ROOTS®) TRANSPLANT OR EQUIVALENT) MUST BE INCORPORATED INTO THE BACKFILL SOIL PRIOR TO BACKFILLING.
- 5.1.11. RELOCATED TREES AND PALMS MUST BE CENTERED IN THE PLANTING PIT, AND THE PIT BACKFILLED USING A 1:1 MIXTURE OF EXISTING SOIL AND 80/20 (DOT SAND/MUCK) SOIL MIX THOROUGHLY BLENDED TOGETHER. DO NOT USE MUDDY SOIL AS BACKFILL. (SEE 5.2.2 BELOW FOR SPECIAL CONDITIONS REGARDING DATE PALM BACKFILL SPECIFICATIONS.)
- 5.1.12. SMALL TREES AND PALMS MUST BE FIRMLY BRACED USING A MINIMUM OF FOUR 4" X 4" WOODEN BRACES ATTACHED TO 2" X 4" WOODEN BATTENS HELD IN PLACE WITH TWO STEEL BANDS. LARGER TREES MAY REQUIRE 6" X 6" WOODEN POSTS OR EVEN TELEPHONE POLES TO PROVIDE SUFFICIENT BRACING STRENGTH TO PREVENT TOPPLING DURING WIND EVENTS. A SUFFICIENT NUMBER OF BATTENS MUST BE STRATEGICALLY PLACED AROUND THE TRUNK SUCH THAT THE STEEL BANDS NEVER CONTACT THE TRUNK. NO BURLAP IS TO REMAIN UNDER THE WOODEN BATTENS ON TREES DURING BRACING, BUT SEVERAL LAYERS OF BURLAP SHOULD BE LEFT UNDER THE WOODEN BATTENS WHEN BRACING PALMS. NAILS SHALL NEVER BE DRIVEN DIRECTLY INTO THE TRUNK DURING BRACING. BRACING MUST REMAIN IN PLACE FOR A MINIMUM OF ONE YEAR.
- 5.1.13. A TREE RING WITH A MINIMUM HEIGHT OF 6" MUST BE CONSTRUCTED 6-12" OUTSIDE THE OUTERMOST EDGE OF THE ROOTBALL AND AROUND THE ENTIRE PERIMETER OF THE ROOTBALL TO DIRECT IRRIGATION WATER AND ANY SUPPLEMENTS THAT ARE ADDED DOWN INTO THE ROOTBALL DURING ROOT REGENERATION.
- 5.1.14. ONCE THE TREE RING IS CONSTRUCTED, A HIGH-PHOSPHORUS ROOT STIMULANT MUST BE LIBERALLY APPLIED TO THE SURFACE OF THE ROOTBALL AND THOROUGHLY WATERED IN.
- 5.1.15. ROOTBALLS MUST BE THOROUGHLY WATERED IN USING A HOSE AND A JOHNSON BAR INSERTED TO THE VERY BOTTOM OF THE ROOTBALL AND SWUNG BACK AND FORTH TO PREVENT FORMATION OF AIR POCKETS. THE JOHNSON BAR TECHNIQUE MUST BE REPEATED AT LEAST ONCE MORE WITHIN ONE WEEK AFTER RELOCATION, AND AGAIN IF ANY SIGNS OF STRESS BECOME APPARENT.
- 5.1.16. ORGANIC MULCH (MELALEUCA IS PREFERRED) MUST BE APPLIED WITHIN 48 HOURS OF RELOCATION AT A DEPTH OF 3-4" OVER THE ENTIRE TOP OF THE ROOTBALL FROM THE TREE RING TO WITHIN 6" OF THE TRUNK. MULCH MUST NOT BE APPLIED OR ALLOWED TO ACCUMULATE DIRECTLY AGAINST THE TRUNK.
- 5.1.17. PITS FROM WHICH THE RELOCATED TREES AND PALMS WERE REMOVED MUST BE CLEARED OF ALL RESIDUAL ROOTS, STUMPS, AND PORTIONS THEREOF AND BACKFILLED WITH CLEAN FILL FLUSH WITH THE SURROUNDING GRADE.
- 5.1.18. RESTORE THE SURFACE WITH MATERIAL TO MATCH ADJACENT AREAS. MATERIAL TO BE APPROVED BY LANDSCAPE ARCHITECT. CONTRACTOR TO PROVIDE A MINIMUM OF ONE YEAR WARRANTY ON SETTLING AND PLANT MATERIAL FROM TIME OF SUBSTANTIAL COMPLETION.
- 5.2. SPECIAL CONDITIONS
- 5.2.1. MULTI-TRUNK TREES AND PALMS MUST BE RELOCATED AS ONE UNIT WITH A SINGLE ROOTBALL.
- 5.2.2. PLANTING PITS FOR EDIBLE DATE PALMS (PHOENIX DACTYLIFERA) MUST BE BACKFILLED WITH PURE DOT SILICA SAND.

6. MAINTENANCE SPECIFICATIONS

6.1. GENERAL

- 6.1.1. ALL RELOCATED TREES AND PALMS MUST BE MAINTAINED FOR ONE YEAR FROM THE DATE OF RELOCATION TO THEIR FINAL LOCATIONS.
- 6.1.2. CONTRACTOR MUST MAINTAIN ALL RELOCATED TREES AND PALMS FOR ONE FULL YEAR FROM THE DATE OF RELOCATION TO THE FINAL LOCATION.
- 6.1.3. WHENEVER POSSIBLE, EACH TREE AND PALM MUST BE WATERED BY A PERMANENT AUTOMATIC IRRIGATION SYSTEM FOLLOWING RELOCATION. EACH WATERING MUST THOROUGHLY SATURATE THE ROOTBALL TO ITS FULL DEPTH; THIS WILL REQUIRE 25-50 GALLONS OF WATER FOR SMALL TREES AND PALMS, DEPENDING ON ROOTBALL SIZE. WHILE LARGE TREES WILL REQUIRE A MINIMUM OF 10 GALLONS PER FOOT OF ROOTBALL DIAMETER (I.E., A 10' DIAMETER ROOTBALL WILL REQUIRE A MINIMUM OF 100 GALLONS PER WATERING EVENT), WATERING FREQUENCY MUST BE EVERY DAY FOR THE FIRST TWO WEEKS, EVERY OTHER DAY FOR THE NEXT THREE WEEKS, AND EVERY THIRD DAY FOR THE NEXT 6-8 WEEKS.
- 6.1.4. WHEN AN AUTOMATIC IRRIGATION SYSTEM IS NOT POSSIBLE, CONTRACTOR IS RESPONSIBLE FOR HAND WATERING RELOCATED TREES AND PALMS THROUGHOUT THE MAINTENANCE PERIOD AND UNTIL FINAL ACCEPTANCE BY THE LANDSCAPE ARCHITECT AND/OR CLIENT.
- 6.1.5. IMMEDIATELY AFTER RELOCATION TO THE FINAL LOCATION, A HIGH-PHOSPHORUS ROOT STIMULANT MUST BE APPLIED TO THE SURFACE OF THE ROOTBALL AT THE RECOMMENDED LABEL RATE AND WATERED IN WITH A DRENCH CONSISTING OF A SYSTEMIC INSECTICIDE AND A CONTACT ROOT ROT FUNGICIDE, FOLLOWING LABEL INSTRUCTIONS, AS INITIAL PREVENTATIVE MAINTENANCE.
- 6.1.6. EVERY THREE MONTHS THEREAFTER, A HIGH-PHOSPHORUS ROOT STIMULANT MUST BE APPLIED TO THE SURFACE OF THE ROOTBALL AT THE RECOMMENDED LABEL RATE AND WATERED IN WITH A DRENCH CONSISTING OF A SYSTEMIC INSECTICIDE AND A BROAD-SPECTRUM SYSTEMIC FUNGICIDE, FOLLOWING LABEL INSTRUCTIONS, AS CONTINUING PREVENTATIVE MAINTENANCE.
- 6.1.7. IRRIGATION AND BRACING MUST BE CHECKED AND EACH TREE OR PALM THOROUGHLY INSPECTED FOR SIGNS OF STRESS, DISEASE, OR PEST PROBLEMS ON A MONTHLY BASIS.
- 6.2. SHADE TREES
- 6.2.1. IMMEDIATELY AFTER RELOCATION TO THE FINAL LOCATION AND EVERY THREE MONTHS THEREAFTER, A HIGH-QUALITY, SLOW-RELEASE 15-2-15 GRANULAR FERTILIZER MUST BE APPLIED, AT THE RECOMMENDED LABEL RATE, SPREAD EVENLY ACROSS THE SURFACE OF THE ROOTBALL.
- 6.2.2. FOLIAR FEED FOUR TIMES PER YEAR.
- 6.3. FLOWERING TREES
- 6.3.1. IMMEDIATELY AFTER RELOCATION TO THE FINAL LOCATION AND EVERY THREE MONTHS THEREAFTER, A HIGH-QUALITY, SLOW-RELEASE 5-10-15 GRANULAR FERTILIZER MUST BE APPLIED, AT THE RECOMMENDED LABEL RATE, SPREAD EVENLY ACROSS THE SURFACE OF THE ROOTBALL.
- 6.3.2. FOLIAR FEED FOUR TIMES PER YEAR.

6.4. PALMS

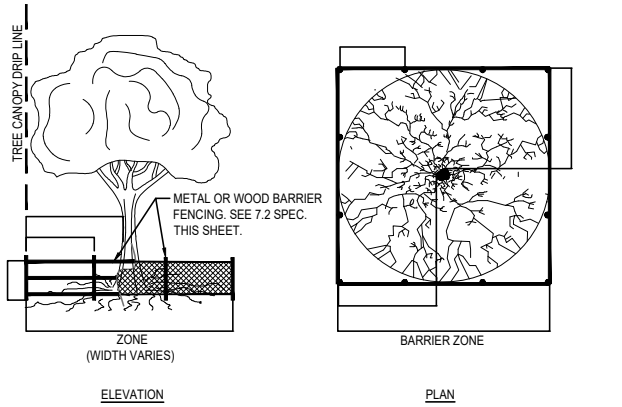
- 6.4.1. STRING MUST BE REMOVED FROM THE TIED UP LEAVES IMMEDIATELY AFTER RELOCATION TO THE FINAL LOCATION IF THE PALM WAS ROOT PRUNED OR WITHIN 30-45 DAYS AFTER RELOCATION ON THE OCCASION THE LANDSCAPE ARCHITECT APPROVED RELOCATION WITHOUT ROOT PRUNING DUE TO TIME CONSTRAINTS.
- 6.4.2. IMMEDIATELY AFTER RELOCATION TO THE FINAL LOCATION AND EVERY THREE MONTHS THEREAFTER, A HIGH-QUALITY, SLOW-RELEASE 8-4-12 GRANULAR PALM FERTILIZER WITH MINORS MUST BE APPLIED, AT THE RECOMMENDED LABEL RATE, SPREAD EVENLY ACROSS THE SURFACE OF THE ROOTBALL.
- 6.4.3. FOLIAR FEED SIX TIMES PER YEAR.

7. TREE PROTECTION SPECIFICATIONS

- 7.1. TREE PROTECTION FENCES SHALL BE CONSTRUCTED PRIOR TO ANY CONSTRUCTION ACTIVITY INCLUDING GRUBBING FOR ALL TREES / PALMS TO REMAIN OR BE RELOCATED.
- 7.2. FENCES SHOULD BE OF STURDY CONSTRUCTION. STURDY TEMPORARY BARRIERS SHALL BE INSTALLED AROUND ALL TREE PROTECTION ZONES. BARRIERS SHALL BE A MINIMUM OF FOUR FEET HIGH, AND SHALL BE CONSTRUCTED OF CONTINUOUS CHAIN LINK FENCE WITH METAL POSTS AT EIGHT-FOOT SPACING, OR OF TWO-BY-FOUR INCH POSTS WITH THREE EQUALLY SPACED TWO-BY-FOUR INCH RAELS. POSTS MAY BE SHIFTED TO AVOID ROOTS.
- 7.3. FENCES MUST BE MAINTAINED INTACT UNTIL THE PROJECT IS COMPLETED. THEY SHOULD NOT BE REMOVED OR DROPPED FOR ANY REASON WITHOUT AUTHORIZATION FROM THE CITY'S URBAN FORESTER.
- 7.4. NO ACTIVITY OR DISTURBANCE SHOULD OCCUR WITHIN THE FENCED AREAS, INCLUDING VEHICLE USE, STORAGE OF MATERIALS, DUMPING OF LIQUIDS OR MATERIALS, GRADE CHANGES, GRUBBING, MECHANICAL TRENCHING FOR IRRIGATION, ELECTRICAL LIGHTING, ETC.

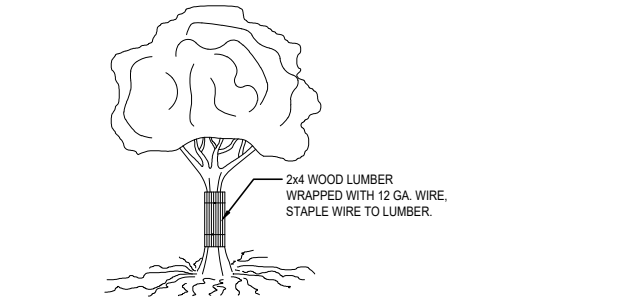
8. WARRANTY

- 8.1. ALL RELOCATED TREES AND PALMS MUST BE GUARANTEED FOR ONE YEAR FROM THE DATE OF RELOCATION TO THEIR FINAL LOCATIONS.
- 8.2. IF A TREE OR PALM DIES WITHIN THE 1-YEAR WARRANTY PERIOD, IT MUST BE REMOVED AND REPLACED AT CONTRACTOR'S EXPENSE.
- 8.3. IF A TREE OR PALM PERFORMS POORLY WITHIN THE 1-YEAR WARRANTY PERIOD, IT MUST BE REMOVED AND REPLACED AT THE CONTRACTOR'S EXPENSE. THE DECISION TO REPLACE BASED ON POOR HEALTH IS AT THE DISCRETION OF THE LANDSCAPE ARCHITECT.
- 8.4. IF A TREE OR PALM SETTLES TO AN UNHEALTHY DEPTH WITHIN THE 1-YEAR WARRANTY PERIOD, AS DEEMED BY THE LANDSCAPE ARCHITECT, IT MUST BE RAISED TO THE CORRECT GRADE AT CONTRACTOR'S EXPENSE.



1. TREE BARRICADE DETAIL

SCALE: N/A



2. TREE TRUNK PROTECTION DETAIL

SCALE: N/A

OWNER	4541 NBR17E
4541 NORTH BAY ROAD, MIAMI BEACH, FL 33140	
ARCHITECT	AA 28000998
O'DONNELL, DANNWOLF AND PARTNERS ARCHITECTS INC. 2432 HOLLYWOOD BLVD HOLLYWOOD, FL 33020 T:954.518.0833	
DESIGN CONSULTANT	SAOTA PTY LTD
109 HATFIELD STREET, GARDENS, CAPE TOWN, 8001 SOUTH AFRICA 0710514884403	
LANDSCAPE ARCHITECT	RAYMOND JUNGLES, INC.
2864 AVATON AVENUE, COCONUT GROVE, FL 33133 T:954.663.8777	



RAYMOND JUNGLES, INC.  
FL. LANDSCAPE ARCHITECT  
Lic. # LA0000866

THIS ITEM HAS BEEN ELECTRONICALLY SIGNED AND SEALED BY  
RAYMOND JUNGLES LICENSE NUMBER LA0000866. USING A  
DIGITAL SIGNATURE AND DATE. PRINTED COPIES OF THIS  
DOCUMENT ARE NOT CONSIDERED SIGNED AND SEALED AND  
SIGNATURE MUST BE VERIFIED ON ANY ELECTRONIC COPIES.

jungles  
RAYMOND JUNGLES INC  
Landscape Architect FASLA

o d p  
ARCHITECTURE AND DESIGN

2432 HOLLYWOOD BOULEVARD  
HOLLYWOOD, FLORIDA 33020  
T: 954.518.0833 | F: 954.518.0131  
www.odparchitects.com  
AA 28000996

DESIGN CONSULTANT

SAOTA

109 HATFIELD STREET, GARDENS,  
CAPETOWN, 8001 SOUTH AFRICA  
T: +27(0)21 468 4400 | info@saota.com  
www.saota.com

PROJECT

4541 NORTH BAY RD

4541 NORTH BAY ROAD, MIAMI BEACH, FL 33140

REVISIONS


SCALE: AS NOTED

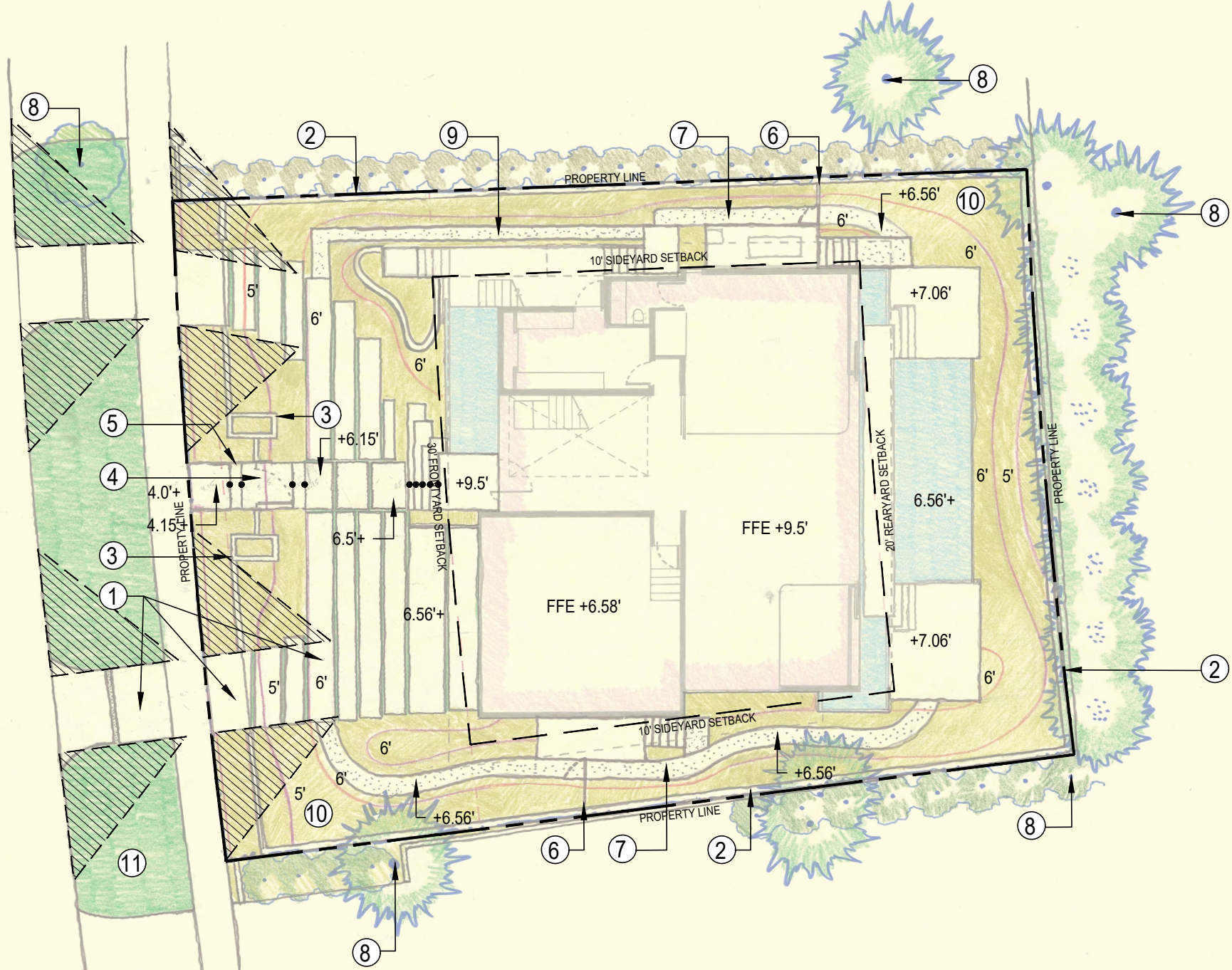
DATE: 04/11/22  
DRAWN BY: JS  
DRAWING TITLE:

TREE DISPOSITION  
NOTES & DETAILS

SHEET NO.

L-102



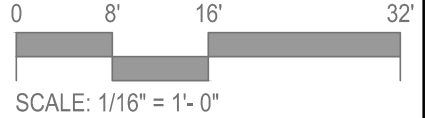


LEGEND

PROPERTY LINE

SETBACK

- ① Concrete pavers on compacted sand base
- ② Masonry property wall at max. allowed height
- ③ 7'-0" HT Masonry planters with stone veneer to match architecture. To be planted with accents and cascading plants.
- ④ Pedestrian Entrance
- ⑤ Concrete steps
- ⑥ Maintenance gate / pool safety gate
- ⑦ Maintenance path
- ⑧ Existing off-site vegetation to remain
- ⑨ Mulch path
- ⑩ Planting area, TYP.
- ⑪ Lawn, TYP.



OWNER  
4541 NBR LLC  
4541 NORTH BAY ROAD, MIAMI BEACH, FL 33140

ARCHITECT  
AA 26009996  
O'DONNELL, DANNWOLF AND PARTNERS ARCHITECTS INC. 2432 HOLLYWOOD BLVD  
HOLLYWOOD, FL 33020 T: 954.518.0833

DESIGN CONSULTANT  
SAOTA PTY LTD  
109 HATFIELD STREET, GARDENS, CAPE TOWN, 8001 SOUTH AFRICA  
T: 021 468 4400

LANDSCAPE ARCHITECT  
RAYMOND JUNGLES, INC.  
2864 AVIATION AVENUE, COCONUT GROVE, FL 33133  
T: 305.955.8777

STATE OF FLORIDA  
RAYMOND JUNGLES  
LA856  
FLORIDA LANDSCAPE ARCHITECT

RAYMOND JUNGLES, INC.  
FL. LANDSCAPE ARCHITECT  
Lic. # LA0000856

THIS ITEM HAS BEEN ELECTRONICALLY SIGNED AND SEALED BY  
RAYMOND JUNGLES LICENSE NUMBER LA0000856, USING A  
DIGITAL SIGNATURE AND DATE. PRINTED COPIES OF THIS  
DOCUMENT ARE NOT CONSIDERED SIGNED AND SEALED AND  
SIGNATURE MUST BE VERIFIED ON ANY ELECTRONIC COPIES.

**jungles**  
RAYMOND JUNGLES INC  
Landscape Architect FASLA

**odp**  
ARCHITECTURE AND DESIGN  
2432 HOLLYWOOD BOULEVARD  
HOLLYWOOD, FLORIDA 33020  
T: 954.518.0833 | F: 954.518.0131  
www.odparchitects.com  
AA 26000996

DESIGN CONSULTANT  
**SAOTA**  
109 HATFIELD STREET, GARDENS,  
CAPETOWN, 8001 SOUTH AFRICA  
T: +27(0)21 468 4400 | info@saota.com  
www.saota.com

PROJECT  
4541 NORTH BAY RD

4541 NORTH BAY ROAD, MIAMI BEACH, FL 33140

REVISIONS


SCALE: AS NOTED  
DATE: 04/11/22  
DRAWN BY: JS  
DRAWING TITLE:

HARDSCAPE PLAN

SHEET NO.  
L-103



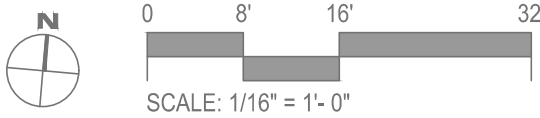


LEGEND

PROPERTY LINE

SETBACK

- ① *Eugenia rhombea*  
Red Stopper
- ② *T.B.D.*  
Sculptural Accent Canopy Tree
- ③ *Polyalthia longifolia*  
False Ashoka Tree
- ④ *Myrcianthes fragrans*  
Simpson's Stopper
- ⑤ *Clusia rosea*  
Autograph Tree
- ⑥ *T.B.D.*  
Misc. Native Canopy Tree
- ⑦ *Sabal domingensis*  
Dominican Sabal Palm
- ⑧ *Cocos nucifera*  
Coconut Palm relocated from on-site
- ⑨ *Dypsis pembana*  
Pemba Palm
- ⑩ *T.B.D.*  
Misc. Native Understory Tree
- ⑪ *Thrinax radiata*  
Green Thatch Palm
- ⑫ *Thrinax radiata*  
Green Thatch Palm relocated from on-site



SCALE: 1/16" = 1'- 0"

OWNER  
4541 NBR LLC  
4541 NORTH BAY ROAD, MIAMI BEACH, FL 33140

ARCHITECT  
AA 26009996  
O'DONNELL, DANNWOLF AND PARTNERS ARCHITECTS INC. 2432 HOLLYWOOD BLVD  
HOLLYWOOD, FL 33020 T:954.518.0833

DESIGN CONSULTANT  
SAOTA PTY LTD  
109 HATFIELD STREET, GARDENS, CAPE TOWN, 8001 SOUTH AFRICA  
T:0027(0)21 468 4400

LANDSCAPE ARCHITECT  
RAYMOND JUNGLES, INC.  
2964 AVIATION AVENUE, COCONUT GROVE, FL 33133  
T:305.666.8777

RAYMOND JUNGLES, INC.  
FL. LANDSCAPE ARCHITECT  
Lic. # LA0000856

THIS ITEM HAS BEEN ELECTRONICALLY SIGNED AND SEALED BY  
RAYMOND JUNGLES LICENSE NUMBER LA0000856, USING A  
DIGITAL SIGNATURE AND DATE. PRINTED COPIES OF THIS  
DOCUMENT ARE NOT CONSIDERED SIGNED AND SEALED AND  
SIGNATURE MUST BE VERIFIED ON ANY ELECTRONIC COPIES.

**jungles**  
RAYMOND JUNGLES INC  
Landscape Architect FASLA

**odp**  
ARCHITECTURE AND DESIGN

2432 HOLLYWOOD BOULEVARD  
HOLLYWOOD, FLORIDA 33020  
T: 954.518.0833 | F: 954.518.0131  
www.odparchitects.com  
AA 26000996

DESIGN CONSULTANT  
**SAOTA**

109 HATFIELD STREET, GARDENS,  
CAPETOWN, 8001 SOUTH AFRICA  
T: +27(0)21 468 4400 | info@saota.com  
www.saota.com

PROJECT

4541 NORTH BAY RD

4541 NORTH BAY ROAD, MIAMI BEACH, FL 33140

REVISIONS


SCALE: AS NOTED

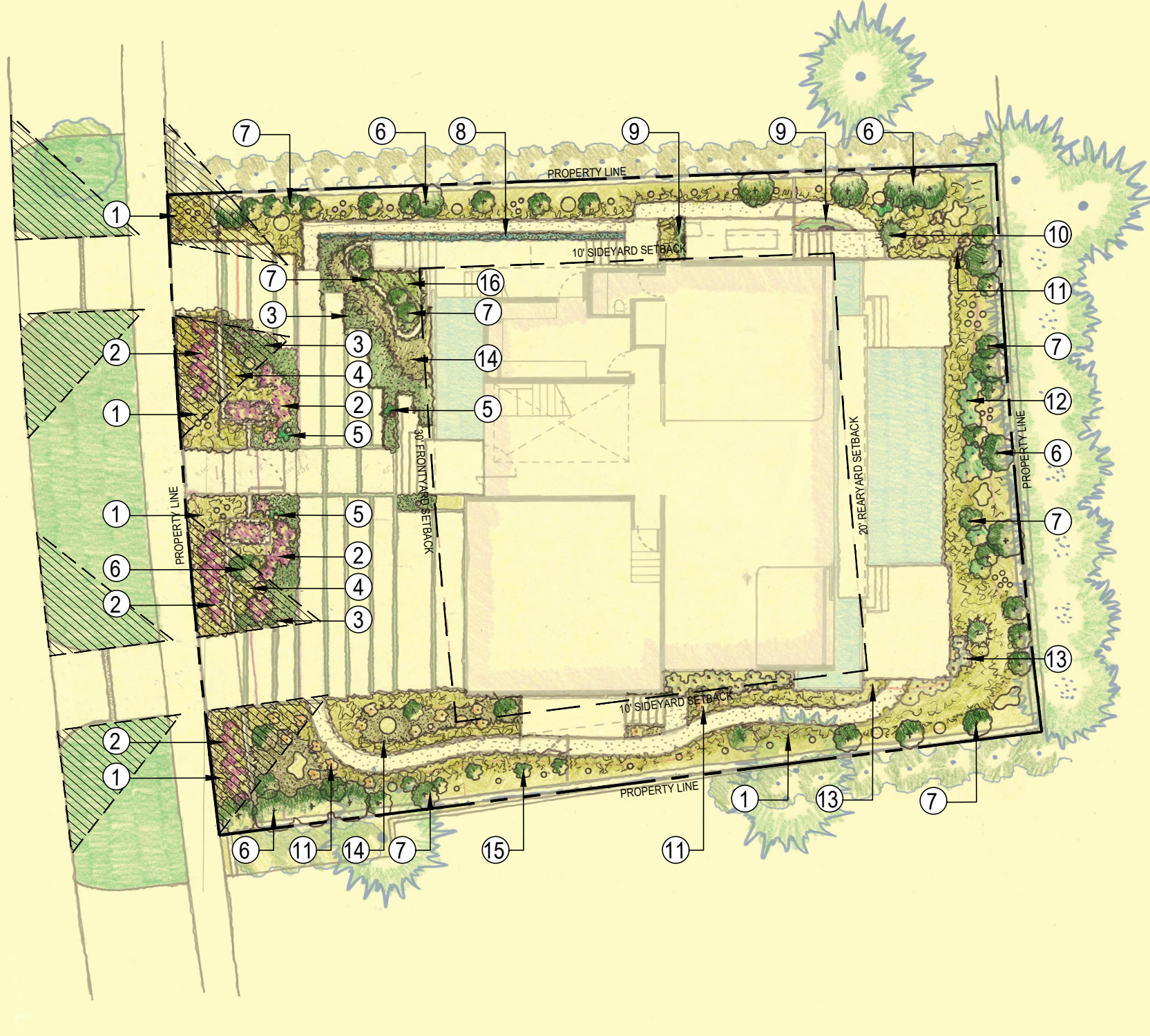
DATE: 04/11/22  
DRAWN BY: JS  
DRAWING TITLE:

CANOPY PLANTING PLAN

SHEET NO.

L-104



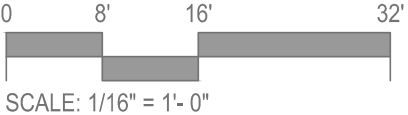


LEGEND

PROPERTY LINE

SETBACK

- ① *Microsorium scolopendrium*  
Wart Fern
- ② *Portea petropolitana 'Jungles'*  
Portea Bromeliad 'Jungles'
- ③ *Peperomia obtusifolia*  
Baby Rubber Plant
- ④ *Philodendron 'Burle Marx'*  
Same
- ⑤ *Monstera adansonii*  
Swiss Cheese Philodendron
- ⑥ *T.B.D.*  
Misc. Large Native Shrub
- ⑦ *T.B.D.*  
Misc. Low Native Shrub
- ⑧ *Pilea glauca*  
Same
- ⑨ *Trachelospermum jasminoides*  
Confederate Jasmine
- ⑩ *Zamia floridana*  
Coontie
- ⑪ *Farfugium japonicum 'Gigantea'*  
Giant Leopard plant
- ⑫ *Philodendron gloriosum*  
Anthurium Gloriosum
- ⑬ *Begonia odorata*  
Sweet Begonia
- ⑭ *Hymenocallis latifolia*  
Spider Lily
- ⑮ *Eranthemum pulchellum*  
Blue Sage
- ⑯ *Phyllanthus myrtifolius*  
Mousetail Plant

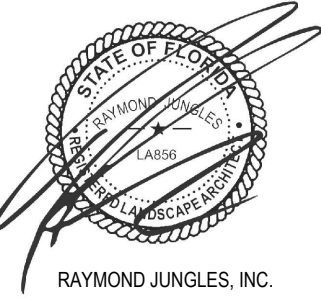


OWNER  
4541 NBR LLC  
4541 NORTH BAY ROAD, MIAMI BEACH, FL 33140

ARCHITECT  
AA 26009998  
O'DONNELL, DANNWOLF AND PARTNERS ARCHITECTS INC. 2432 HOLLYWOOD BLVD  
HOLLYWOOD, FL 33020 T:954.518.0833

DESIGN CONSULTANT  
SAOTA PTY LTD  
109 HATFIELD STREET, GARDENS, CAPE TOWN, 8001 SOUTH AFRICA  
T:021 468 4400

LANDSCAPE ARCHITECT  
RAYMOND JUNGLES, INC.  
2964 AVIATION AVENUE, COCONUT GROVE, FL 33133  
T:305.866.8777



RAYMOND JUNGLES, INC.  
FL. LANDSCAPE ARCHITECT  
Lic. # LA0000856

THIS ITEM HAS BEEN ELECTRONICALLY SIGNED AND SEALED BY  
RAYMOND JUNGLES LICENSE NUMBER LA0000856, USING A  
DIGITAL SIGNATURE AND DATE. PRINTED COPIES OF THIS  
DOCUMENT ARE NOT CONSIDERED SIGNED AND SEALED AND  
SIGNATURE MUST BE VERIFIED ON ANY ELECTRONIC COPIES.

**jungles**  
RAYMOND JUNGLES INC  
Landscape Architect FASLA

**odp**  
ARCHITECTURE AND DESIGN

2432 HOLLYWOOD BOULEVARD  
HOLLYWOOD, FLORIDA 33020  
T: 954.518.0833 | F: 954.518.0131  
www.odparchitects.com  
AA 26000996

DESIGN CONSULTANT  
**SAOTA**

109 HATFIELD STREET, GARDENS,  
CAPETOWN, 8001 SOUTH AFRICA  
T: +27(0)21 468 4400 | info@saota.com  
www.saota.com

PROJECT  
4541 NORTH BAY RD  
4541 NORTH BAY ROAD, MIAMI BEACH, FL 33140

REVISIONS

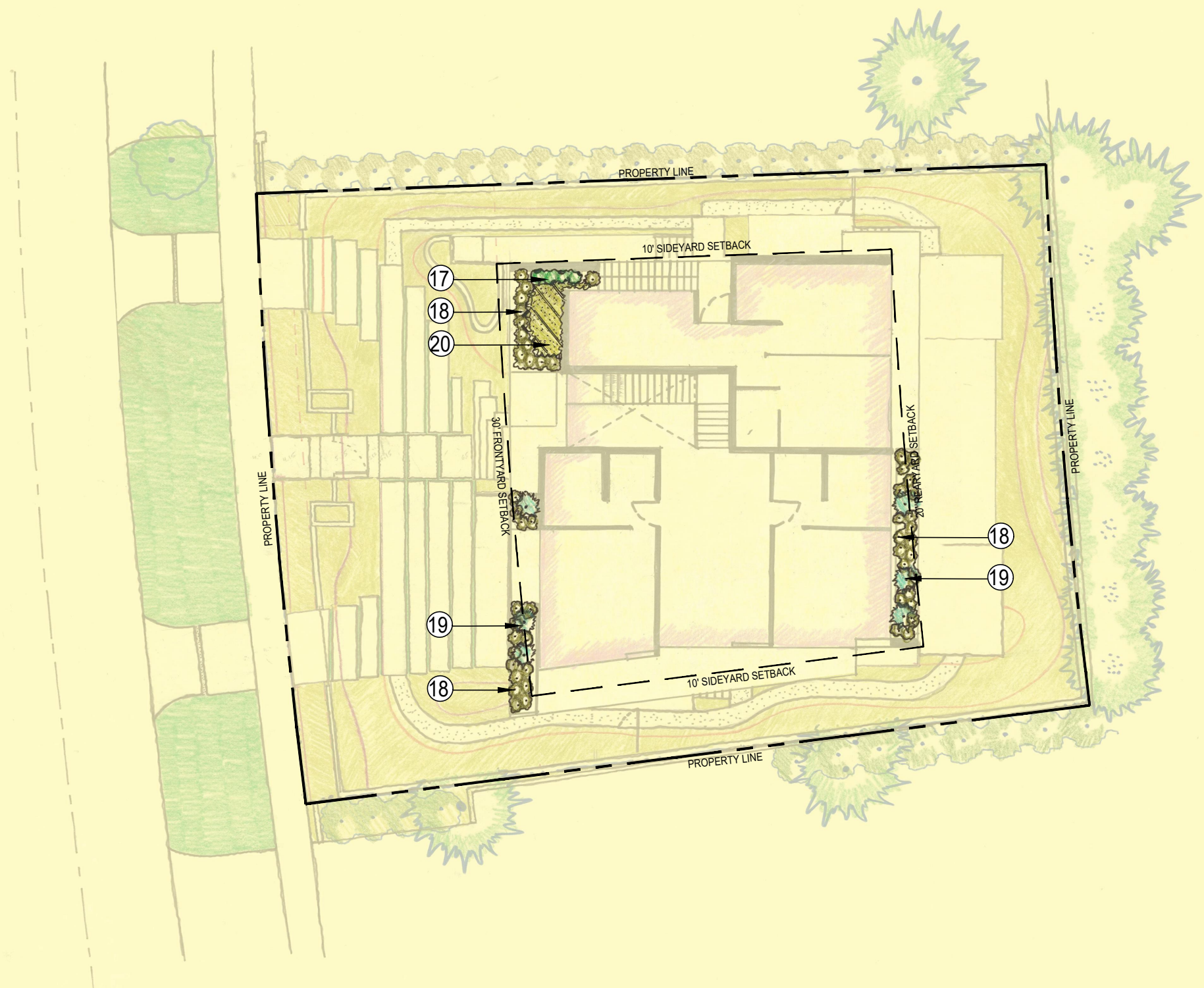

SCALE: AS NOTED

DATE: 04/11/22  
DRAWN BY: JS  
DRAWING TITLE:

UNDERSTORY PLANTING  
PLAN - GROUND LEVEL

SHEET NO.  
L-105





LEGEND

PROPERTY LINE

SETBACK

- ⑰ *Stephanotis floribunda*  
Madagascar Jasmine
- ⑱ *Ernodea littoralis*  
Golden Beach Creeper
- ⑲ *Alcantarea 'Odorata'*  
Same
- ⑳ *Nephrolepis exaltata*  
Boston Fern

OWNER  
4541 NBR LLC  
4541 NORTH BAY ROAD, MIAMI BEACH, FL 33140

ARCHITECT  
AA 26009996  
O'DONNELL, DANNWOLF AND PARTNERS ARCHITECTS INC. 2432 HOLLYWOOD BLVD  
HOLLYWOOD, FL 33020 T:954.518.0833

DESIGN CONSULTANT  
SAOTA PTY LTD  
109 HATFIELD STREET, GARDENS, CAPE TOWN, 8001 SOUTH AFRICA  
T:0027(0)21 468 4400

LANDSCAPE ARCHITECT  
RAYMOND JUNGLES, INC.  
2964 AVIATION AVENUE, COCONUT GROVE, FL 33133  
T:305.666.6771



RAYMOND JUNGLES, INC.  
FL. LANDSCAPE ARCHITECT  
Lic. # LA0000856

THIS ITEM HAS BEEN ELECTRONICALLY SIGNED AND SEALED BY  
RAYMOND JUNGLES LICENSE NUMBER LA0000856, USING A  
DIGITAL SIGNATURE AND DATE. PRINTED COPIES OF THIS  
DOCUMENT ARE NOT CONSIDERED SIGNED AND SEALED AND  
SIGNATURE MUST BE VERIFIED ON ANY ELECTRONIC COPIES.

**jungles**  
RAYMOND JUNGLES INC  
Landscape Architect FASLA

**odp**  
ARCHITECTURE AND DESIGN

2432 HOLLYWOOD BOULEVARD  
HOLLYWOOD, FLORIDA 33020  
T: 954.518.0833 | F: 954.518.0131  
www.odparchitects.com  
AA 26000996

DESIGN CONSULTANT  
**SAOTA**

109 HATFIELD STREET, GARDENS,  
CAPETOWN, 8001 SOUTH AFRICA  
T: +27(0)21 468 4400 | info@saota.com  
www.saota.com

PROJECT  
4541 NORTH BAY RD

4541 NORTH BAY ROAD, MIAMI BEACH, FL 33140

REVISIONS		

SCALE: AS NOTED

DATE: 04/11/22  
DRAWN BY: JS  
DRAWING TITLE:

UNDERSTORY PLANTING  
PLAN - SECOND LEVEL

SHEET NO.  
L-106



0 8' 16' 32'

SCALE: 1/16" = 1'- 0"



jungles

4541 North Bay Road Garden | Proposed Plant List

Miami Beach, Fl.

8-Apr-22

GROUND LEVEL

RELOCATED TREES & PALMS				
QTY	Botanical Name	Common Name	Native	Specifications
5	<i>Thrinax radiata</i>	Green Thatch Palm	Yes	Relocated from on-site (#10, 11, 12, 23, 40)
5	<i>Cocos nucifera</i>	Coconut Palm	No	Relcoated from on-site (#31, 34, 39, 41) and to be laid out in the field by landscape architect (#42)
TREES				
QTY	Botanical Name	Common Name	Native	Specifications
3	<i>Clusia rosea</i>	Autograph Tree	Yes	200 Gal., 16' HT., x 8' SPR.; Character trunk
3	<i>Eugenia rhombea</i>	Red Stopper	Yes	12' HT. x 6' SPR.; 2" DBH (minimum), Character branching, multi trunk
3	<i>Myrcianthes fragrans</i>	Simpson's Stopper	Yes	12' HT. x 6' SPR.; 2" DBH (minimum), Character branching, multi trunk
4	<i>T.B.D.</i>	Misc. Native Canopy Tree	Yes	16' HT. x 8' SPR.; 4" DBH (minimum)
1	<i>T.B.D.</i>	Sculptural Accent Canopy Tree	Yes	16' HT. x 8' SPR.; 4" DBH (minimum)
PALMS				
QTY	Botanical Name	Common Name	Native	Specifications
4	<i>Dypsis pembana</i>	Pemba Palm	No	F.G.; 16'-20' HT.; 5 trunks min.
2	<i>Sabal domingensis</i>	Dominican Sabal Palm	No	20'-25' CT.; Heavy
8	<i>Thrinax radiata</i>	Green Thatch Palm	Yes	13'-21' WD; Staggered heights; Character trunks
UNDERSTORY TREES / LARGE SHRUBS				
QTY	Botanical Name	Common Name	Native	Specifications
14	<i>Polyalthia longifolia</i>	False Ashoka Tree	No	24' HT.
4	<i>T.B.D.</i>	Misc. Native Understory Trees	Yes	12' HT. x 6' SPR.; 2" DBH (minimum)
15	<i>T.B.D.</i>	Misc. Large Native Shrub	Yes	45 Gal.; 6'-8' HT. x 4'-5' SPR.; Bush
UNDERSTORY SHRUBS				
QTY	Botanical Name	Common Name	Native	Specifications
33	<i>T.B.D.</i>	Misc. Low Native Shrub	Yes	7 Gal.; 24"-36" HT.; Full
19	<i>Begonia odorata</i>	Sweet Begonia	No	3 Gal.; Full
5	<i>Eranthemum pulchellum</i>	Blue Sage	No	3 Gal.; 3' HT.
ACCENTS				
QTY	Botanical Name	Common Name	Native	Specification
6	<i>Akantarea 'Odorata'</i>	Same	No	3 Gal.
2	<i>Monstera adansonii</i>	Swiss cheese Philodendron	No	3 Gal.
8	<i>Philodendron gloriosum</i>	Anthurium Gloriosum	No	7 Gal.
60	<i>Portea petropolitana 'Jungles'</i>	Portea Bromeliad 'Jungles'	No	3 Gal.; Full
2	<i>Zamia floridana</i>	Coontie	Yes	7 Gal.; 18" HT.; Full
GROUNDCOVERS				
QTY	Botanical Name	Common Name	Native	Specification
50	<i>Ernodea littoralis</i>	Golden Beach Creeper	No	1 Gal.
22	<i>Farfugium japonicum 'Gigantea'</i>	Giant Leopard Plant	No	3 Gal.
28	<i>Hymenocallis latifolia</i>	Spider Lily	Yes	3 Gal. @ 24" O.C.; Full
597	<i>Mikrosorum scolopendrium</i>	Wart Fern	No	1 Gal. @ 18" O.C.; Full
20	<i>Nephrolepis exaltata</i>	Boston Fern	Yes	1 Gal. @ 18" O.C.; Full
93	<i>Peperomia obtusifolia</i>	Baby Rubber Plant	Yes	1 Gal. @ 18" O.C.; Full
13	<i>Philodendron 'Burle Marx'</i>	Same	No	3 Gal. @ 24" O.C.; Full
7	<i>Phyllanthus myrtifolius</i>	Mousetail Plant	No	3 Gal. @ 24" O.C.; Full
35	<i>Pilea glauca</i>	Same	No	1 Gal. @ 12" O.C.; Full
SOD				
QTY	Botanical Name	Common Name	Native	Specification
1,069	<i>Zoysia japonica 'Empire'</i>	Zoysia Grass 'Emprire'	No	Solid Sod; Quantity shown in square feet
VINE				
QTY	Botanical Name	Common Name	Native	Specification
4	<i>Stephanotis floribunda</i>	Madagascar Jasmine	No	3 Gal.
2	<i>Trachelospermum jasminoides</i>	Confederate Jasmine	No	7 Gal.; Trellis

4541 North Bay Road Garden | Mitigation Chart

Miami Beach, Fl.

8-Apr-22

Mitigation Chart

Total Tree D.B.H. Removed Requiring Mitigation	36 inches
Total Palms Removed Requiring Mitigation Tree Replacement on a 1:1 basis	11 (12' HT.; 2" DBH)
Proposed Trees with 16' HT. x 8' SPR.; 4" D.B.H. (minimum)	8 (refer to Trees category in plant list)
Proposed Trees with 12' HT. and 2" D.B.H. (minimum)	10 (refer to tees /understory trees category in plant list)

Sec. 46-61. - Tree replacement.

- (1) *Tree replacement chart.* The tree replacement chart below, shall be used to determine the total number and size of trees that shall be planted as replacement trees for all trees permitted for removal. The replacement tree calculations are based on the total diameter in inches of all trees approved for removal. To determine the required replacement trees, calculate the total sum in inches of the diameters of all trees to be removed. This sum will result in one single number in inches that represents the combined total of the diameters of all trees to be removed. Diameter measurement shall be rounded up to the nearest inch.

TREE REPLACEMENT CHART

Total diameter of tree(s) to be removed (sum of inches at DBH)	Total number of replacement trees required (where each replacement tree is a minimum of 2" DBH x 6' spread in canopy x 12' in height)	OR	Total number of replacement trees required (where each replacement tree is a minimum of 4" DBH x 8' spread in canopy x 16' in height)	OR	Contribution to Tree Trust Fund
2"—3"	1	or	0	or	\$1,000.00
4"—6"	2	or	1	or	\$2,000.00
7"—12"	4	or	2	or	\$4,000.00
13"—18"	6	or	3	or	\$6,000.00
19"—24"	8	or	4	or	\$8,000.00
25"—30"	10	or	5	or	\$10,000.00
31"—36"	12	or	6	or	\$12,000.00
37"—42"	14	or	7	or	\$14,000.00
43"—48"	16	or	8	or	\$16,000.00
49"—60"	20	or	10	or	\$20,000.00

- (a) If the sum of the diameter of trees to be removed exceeds a total of 60 inches, the additional inches shall be added cumulatively from the top of the chart, down to the bottom of the chart, to calculate the number of trees required as replacement trees.
- (b) Up to 30 percent of the two-inch DBH replacement tree requirement may be met by planting native species within private property, with a minimum height of ten feet and a minimum DBH of one and one-half inches at time of planting.
- (c) The removal of a palm shall be replaced with one canopy tree at 12 feet overall height with a two-inch DBH.

OWNER  
4541 NBR LLC  
4541 NORTH BAY ROAD, MIAMI BEACH, FL 33140

ARCHITECT  
AA 2600996  
O'DONNELL, DANNWOLF AND PARTNERS ARCHITECTS INC. 2432 HOLLYWOOD BLVD  
HOLLYWOOD, FL 33020 T:954.518.0833

DESIGN CONSULTANT  
SAOTA PTY LTD  
109 HATFIELD STREET, GARDENS, CAPE TOWN, 8001 SOUTH AFRICA  
T:0027 21 468 4400

LANDSCAPE ARCHITECT  
RAYMOND JUNGLES, INC.  
2964 AVIATION AVENUE, COCONUT GROVE, FL 33133  
T:305.958.9777



RAYMOND JUNGLES, INC.  
FL. LANDSCAPE ARCHITECT  
Lic. # LA0000856

THIS ITEM HAS BEEN ELECTRONICALLY SIGNED AND SEALED BY  
RAYMOND JUNGLES LICENSE NUMBER LA0000856. USING A  
DIGITAL SIGNATURE AND DATE. PRINTED COPIES OF THIS  
DOCUMENT ARE NOT CONSIDERED SIGNED AND SEALED AND  
SIGNATURE MUST BE VERIFIED ON ANY ELECTRONIC COPIES.

jungles  
RAYMOND JUNGLES INC  
Landscape Architect FASLA

odp  
ARCHITECTURE AND DESIGN

2432 HOLLYWOOD BOULEVARD  
HOLLYWOOD, FLORIDA 33020  
T: 954.518.0833 | F:954.518.0131  
www.odparchitects.com  
AA 26000996

DESIGN CONSULTANT

SAOTA  
109 HATFIELD STREET, GARDENS,  
CAPETOWN, 8001 SOUTH AFRICA  
T: +27(0)21 468 4400 | info@saota.com  
www.saota.com

PROJECT

4541 NORTH BAY RD

4541 NORTH BAY ROAD, MIAMI BEACH, FL 33140

REVISIONS


SCALE: AS NOTED  
DATE: 04/11/22  
DRAWN BY: AS  
DRAWING TITLE:

PLANT LIST &  
MITIGATION CHART

SHEET NO.

L-107



	CITY OF MIAMI BEACH LANDSCAPE LEGEND INFORMATION REQUIRED TO BE PERMANENTLY AFFIXED TO PLANS		
	ZONING DISTRICT <u>RS-4</u> LOT AREA <u>7,314 SF</u> ACRES <u>0.17</u>		
	<b><u>OPEN SPACE</u></b>	<b>REQUIRED/ ALLOWED</b>	<b>PROVIDED</b>
A.	SQUARE FEET OF REQUIRED OPEN SPACE AS INDICATED ON SITE PLAN: LOT AREA = <u>7,314</u> S.F. X <u>50%</u> % = <u>3,657</u> S.F.	3,657 SF	3,717 SF
B.	SQUARE FEET OF PARKING LOT OPEN SPACE REQUIRED AS INDICATED ON SITE PLAN:	N/A	N/A
	NUMBER OF PARKING SPACES    _____ X 10 S.F. PARKING SPACE =	N/A	N/A
C.	TOTAL SQUARE FEET OF LANDSCAPED OPEN SPACE REQUIRED: A+B=	3,657 SF	3,717 SF
	COVERAGE EXEMPTION (5'-0" PROJECTIONS-762 SQ.FT.)		
	<b><u>LAWN AREA CALCULATION</u></b>		
A.	SQUARE FEET OF LANDSCAPED OPEN SPACE REQUIRED 3,657	3,657 SF	3,717 SF
B.	MAXIMUM LAWN AREA (SOD) PERMITTED= 50 % X 3,657 S.F.=1,828 SF	1,828 SF	0 SF
	<b><u>TREES</u></b>		
A.	TREES REQUIRED PER NET LOT ACRE		
	TREES ON FRONT YARD	2	4
	TREES ON BACK YARD	3	5
	TREES IN EXCESS OF 6,000 SF LOT (1 TREE X 1,000 SF)	2	
	TOTAL TREES ON LOT	7	28
B.	30% NATIVES REQUIRED: 7 X 30% = 2.1	2	15
C.	50% LOW MAINTENANCE / DROUGHT AND SALT TOLERANT REQUIRED: 7 X 50% = 3.5	4	15
D.	STREET TREES (MAXIMUM AVERAGE SPACING OF 20' O.C.) 77 LF / 20' = 3.8	4	4
E.	STREET TREE SPECIES ALLOWED DIRECTLY BENEATH POWER LINES: (MAXIMUM AVERAGE SPACING OF 20' O.C.):	N/A	N/A
	<b><u>SHRUBS</u></b>		
A.	NUMBER OF SHRUBS REQUIRED: SUM OF LOT AND STREET TREES REQUIRED 11 X 12 = 132	132	170
B.	50% NATIVE SHRUBS REQUIRED: 132 X 50% = 66	66	70
	<b><u>LARGE SHRUBS OR SMALL TREES</u></b>		
A.	LARGE SHRUBS OR SMALL TREES (10% OF REQUIRED SHRUBS) 132 X 10% = 13.2	13	19
B.	50% NATIVE LARGE SHRUBS OR SMALL TREES REQUIRED: 13.2 X 50% = 6.6	7	19

OWNER  
4541 NBR LLC  
4541 NORTH BAY ROAD, MIAMI BEACH, FL 33140

ARCHITECT  
AA 2600998  
O'DONNELL, DANNWOLF AND PARTNERS ARCHITECTS INC. 2432 HOLLYWOOD BLVD  
HOLLYWOOD, FL 33020 T:954.518.0833

DESIGN CONSULTANT  
SAOTA PTY LTD  
109 HATFIELD STREET, GARDENS, CAPE TOWN, 8001 SOUTH AFRICA  
T:0027(0)21.468.4400

LANDSCAPE ARCHITECT  
RAYMOND JUNGLES, INC.  
2964 AVIATION AVENUE, COCONUT GROVE, FL 33133  
T:305.956.8777



RAYMOND JUNGLES, INC.  
FL. LANDSCAPE ARCHITECT  
Lic. # LA0000856

THIS ITEM HAS BEEN ELECTRONICALLY SIGNED AND SEALED BY  
RAYMOND JUNGLES LICENSE NUMBER LA0000856, USING A  
DIGITAL SIGNATURE AND DATE. PRINTED COPIES OF THIS  
DOCUMENT ARE NOT CONSIDERED SIGNED AND SEALED AND  
SIGNATURE MUST BE VERIFIED ON ANY ELECTRONIC COPIES.

**jungles**  
RAYMOND JUNGLES INC  
Landscape Architect FASLA

**odp**  
ARCHITECTURE AND DESIGN

2432 HOLLYWOOD BOULEVARD  
HOLLYWOOD, FLORIDA 33020  
T: 954.518.0833 | F:954.518.0131  
www.odparchitects.com  
AA 26000996

DESIGN CONSULTANT

**SAOTA**  
109 HATFIELD STREET, GARDENS,  
CAPETOWN, 8001 SOUTH AFRICA  
T: +27(0)21.468.4400 | info@saota.com  
www.saota.com

PROJECT  
4541 NORTH BAY RD

4541 NORTH BAY ROAD, MIAMI BEACH, FL 33140

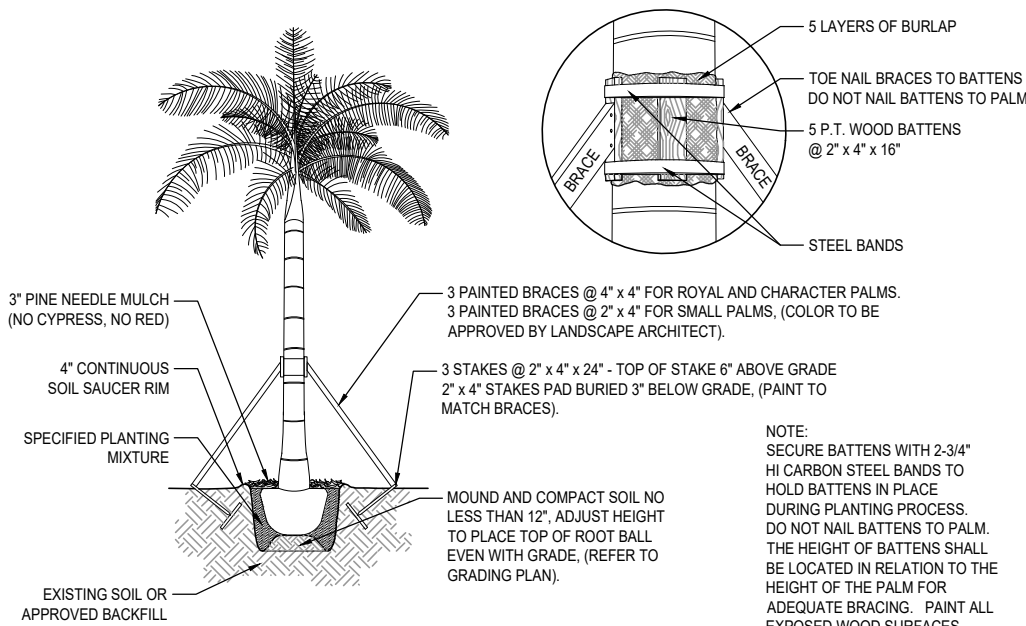
REVISIONS		

SCALE: AS NOTED  
DATE: 04/11/22  
DRAWN BY: JS  
DRAWING TITLE:

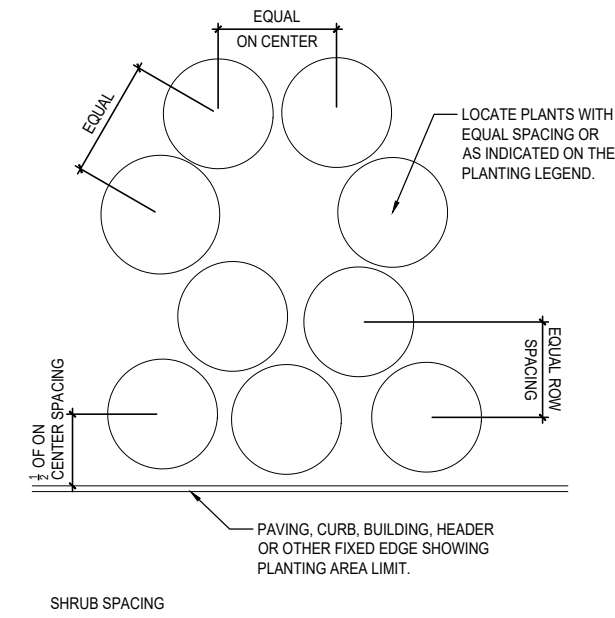
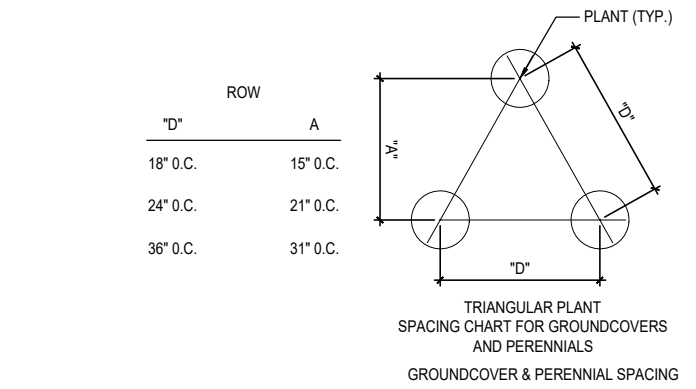
LANDSCAPE LEGEND

SHEET NO.  
L-108

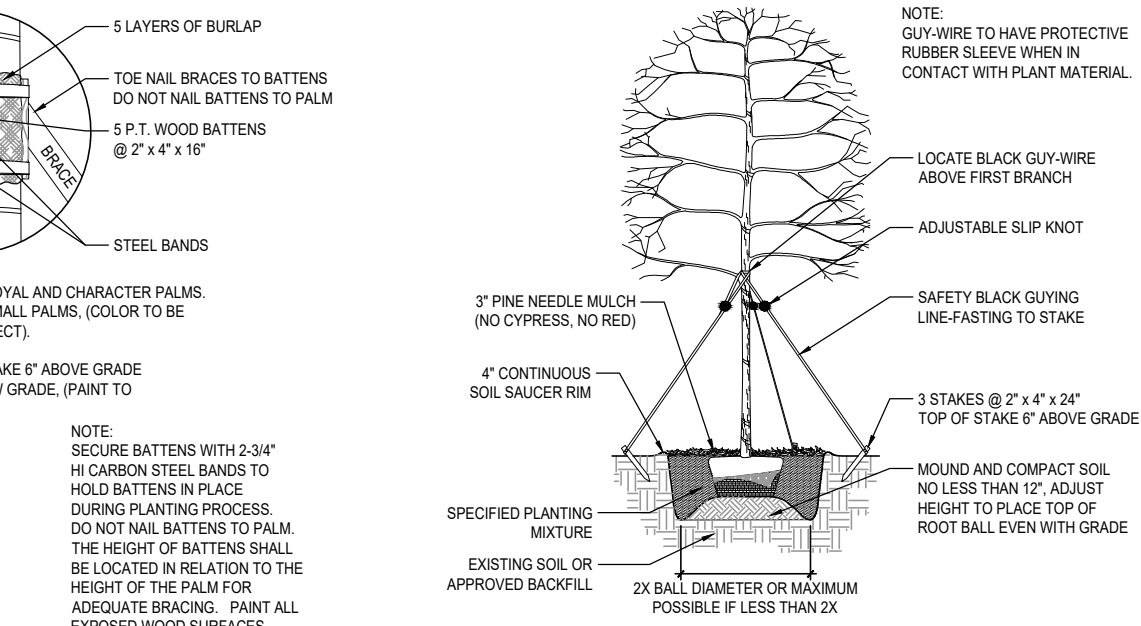




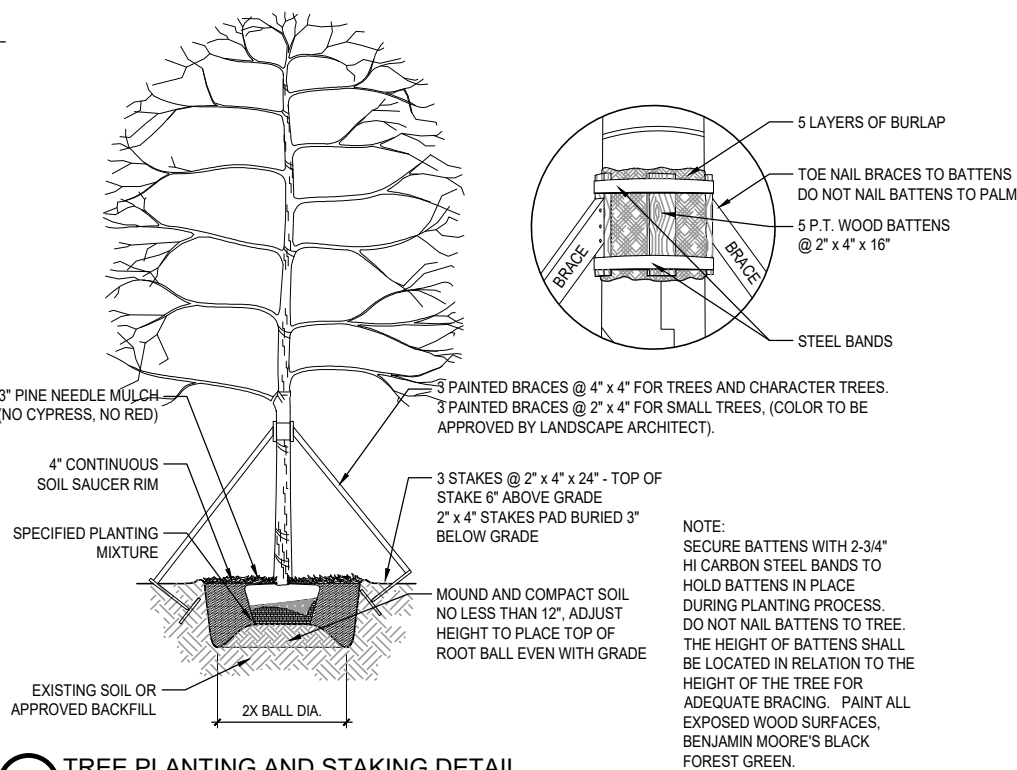
1 PALM PLANTING AND STAKING DETAIL  
SCALE: N.T.S.



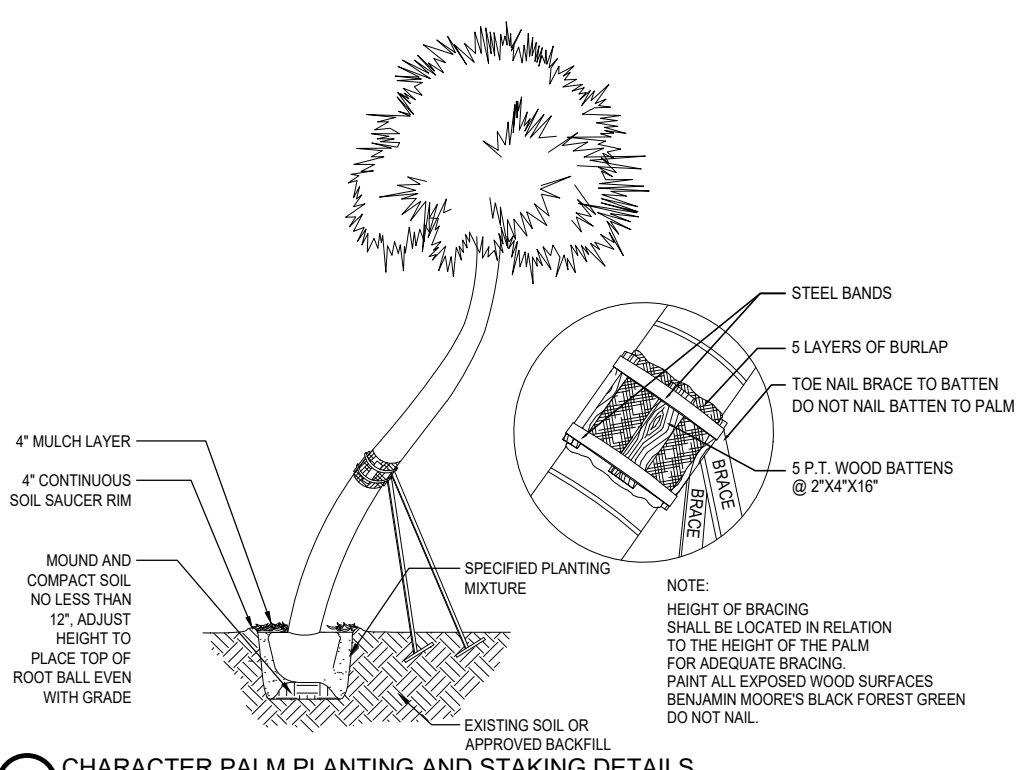
5 PLANT & SHRUB SPACING DETAIL  
SCALE: N.T.S.



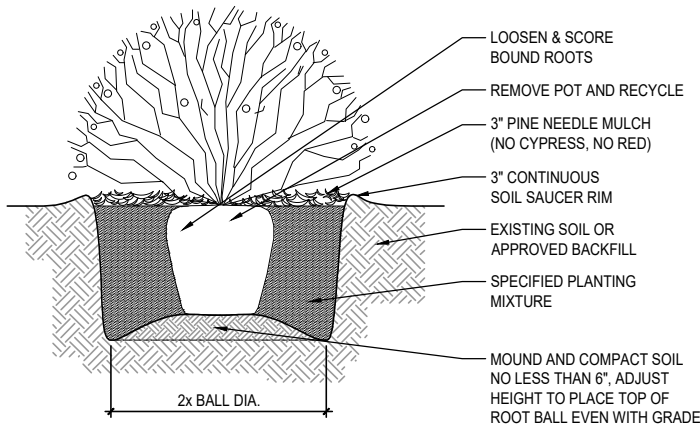
4 GROUND COVER PLANTING DETAIL  
SCALE: N.T.S.



6 TREE PLANTING AND STAKING DETAIL  
SCALE: N.T.S.



7 CHARACTER PALM PLANTING AND STAKING DETAILS  
SCALE: N.T.S.



3 SHRUB PLANTING DETAIL  
SCALE: N.T.S.

OWNER	4541 NBR LLC
4541 NORTH BAY ROAD, MIAMI BEACH, FL 33149	
ARCHITECT	AA 2600999
O'DONNELL, DANNWOLF AND PARTNERS ARCHITECTS INC. 2432 HOLLYWOOD BLVD HOLLYWOOD, FL 33020 T:954.518.0833	
DESIGN CONSULTANT	SAOTA PTY LTD
109 HATFIELD STREET, GARDENS, CAPE TOWN, 8001 SOUTH AFRICA 071021 468 4400	
LANDSCAPE ARCHITECT	RAYMOND JUNGLES, INC.
2364 AVIATION AVENUE, COCONUT GROVE, FL 33133 T:305.665.6777	



RAYMOND JUNGLES, INC.  
FL. LANDSCAPE ARCHITECT  
Lic. # LA0000856

THIS ITEM HAS BEEN ELECTRONICALLY SIGNED AND SEALED BY RAYMOND JUNGLES LICENSE NUMBER LA0000856, USING A DIGITAL SIGNATURE AND DATE. PRINTED COPIES OF THIS DOCUMENT ARE NOT CONSIDERED SIGNED AND SEALED AND SIGNATURE MUST BE VERIFIED ON ANY ELECTRONIC COPIES.

**jungles**  
RAYMOND JUNGLES INC  
Landscape Architect FASLA

**odp**  
ARCHITECTURE AND DESIGN

2432 HOLLYWOOD BOULEVARD  
HOLLYWOOD, FLORIDA 33020  
T: 954.518.0833 | F: 954.518.0131  
www.odparchitects.com  
AA 26000996

DESIGN CONSULTANT  
**SAOTA**

109 HATFIELD STREET, GARDENS,  
CAPETOWN, 8001 SOUTH AFRICA  
T: +27(0)21 468 4400 | info@saota.com  
www.saota.com

PROJECT  
4541 NORTH BAY RD

4541 NORTH BAY ROAD, MIAMI BEACH, FL 33140

REVISIONS			

SCALE: AS NOTED

DATE: 04/11/22  
DRAWN BY: JS  
DRAWING TITLE:

PLANTING DETAILS

SHEET NO.

L-109



GENERAL LANDSCAPE NOTES AND SPECIFICATIONS

1. LANDSCAPE CONTRACTOR SHALL BECOME FAMILIAR WITH THE SCOPE OF WORK AS WELL AS THE SITE, DIGGING CONDITIONS, AND ANY OBSTACLES PRIOR TO SUBMITTING A BID.
2. LANDSCAPE CONTRACTOR SHALL PROVIDE AN INSTALLATION SCHEDULE TO THE GENERAL CONTRACTOR AND LANDSCAPE ARCHITECT FOR REVIEW AND APPROVAL.
3. LANDSCAPE CONTRACTOR SHOULD VERIFY ALL ESTIMATED QUANTITIES OF MATERIAL SHOWN ON THE LANDSCAPE ARCHITECT'S DRAWINGS PRIOR TO SUBMITTING A BID.
4. PLANTING PLAN SHALL TAKE PRECEDENCE OVER PLANT LIST IN CASE OF DISCREPANCIES.
5. ALL PLANT MATERIAL SYMBOLS SHOWN ON LANDSCAPE PLANS SHALL BE CONSIDERED DIAGRAMMATIC AND SHOULD BE ADJUSTED IN THE FIELD BY LANDSCAPE CONTRACTOR TO AVOID ALL UTILITIES AND ALL OTHER OBSTRUCTIONS, AFTER CONSULTING THE LANDSCAPE ARCHITECT.
6. ALL SIZES SPECIFIED FOR PLANT MATERIAL ON THE PLAN AND PLANT LIST SHALL BE CONSIDERED MINIMUM.
7. ALL PLANT MATERIAL MUST MEET OR EXCEED THE SPECIFIED MINIMUM REQUIREMENTS FOR BOTH HEIGHT AND SPREAD.
8. ANY SPECIFIC REQUIREMENTS SUCH AS SPECIFIC SHAPE, CHARACTER, NUMBER OF TREE TRUNKS, PLANT SOURCE, TRANSPORTING, AND OR SPECIAL BRACING NOTED ON THE PLAN OR PLANT LIST, WILL REQUIRE APPROVAL AND OR COORDINATION WITH THE LANDSCAPE ARCHITECT.
9. NO CHANGE OR SUBSTITUTION SHALL BE MADE WITHOUT PRIOR APPROVAL OF THE LANDSCAPE ARCHITECT. ANY REVISION OR MODIFICATIONS TO THE LANDSCAPE PLAN MUST HAVE PRIOR APPROVAL BY THE THE LANDSCAPE ARCHITECT & OWNER
10. ALL MATERIAL SHALL BE SUBJECT TO AVAILABILITY AT TIME OF INSTALLATION. SUBSTITUTIONS MAY BE MADE AFTER CONSULTATION WITH THE LANDSCAPE ARCHITECT.
11. ALL TREES, PALMS, SHRUBS AND GROUND COVERS SHALL BE GUARANTEED FOR A PERIOD OF 12 MONTHS FROM DATE OF FINAL ACCEPTANCE.
12. CHANGES MAY OCCUR DURING THE NORMAL COURSE OF IMPLEMENTATION. VERBAL CHANGE ORDERS WILL NOT BE HONORED. ANY CHANGES MUST BE SUBMITTED TO THE LANDSCAPE ARCHITECT IN WRITING AS A CHANGE ORDER TO BE REVIEWED AND APPROVED IN WRITING BY OWNER/CLIENT.
13. LANDSCAPE CONTRACTOR SHALL LOCATE AND VERIFY ALL UNDERGROUND UTILITIES OR STRUCTURES PRIOR TO DIGGING. LANDSCAPE CONTRACTOR SHALL REPAIR ALL DAMAGES TO UNDERGROUND UTILITIES, AND OR CONSTRUCTION CAUSED BY LANDSCAPE INSTALLATION, AT NO COST TO THE OWNER.
14. LANDSCAPE CONTRACTOR SHALL COORDINATE WITH THE GENERAL CONTRACTOR, THE REMOVAL OF ALL BUILDING CONSTRUCTION DEBRIS AND FOREIGN MATERIAL PRIOR TO INSTALLATION OF ANY PLANT MATERIAL.
15. SITE PREPARATION SHOULD INCLUDE THE ERADICATION AND REMOVAL OF ANY WEEDS OR GRASS, REMOVAL AND CLEAN UP OF ANY DEAD MATERIAL AND ROUGH AND FINISH GRADING PER SPECS AND OR LANDSCAPE PLANS.
16. FOR PLANT MATERIAL DESIGNATED TO BE REMOVED, THE ENTIRE ROOT SYSTEM SHALL BE DUG AND REMOVED FROM THE SITE.
17. ALL PLANTING AREAS SHALL BE EXCAVATED TO A MINIMUM OF 3' FOR GROUNDCOVER'S AND MORE THAN 3' FOR SHRUBS, TREES, AND PALMS, AND SHOULD RECEIVE A SPECIFIED PLANTING SOIL MIXTURE. PLANTING SOIL SHALL BE 70% COARSE SAND, 20% FLORIDA PEAT, AND 10% PINE BARK AS MANUFACTURED BY ATLAS PEAT & SOIL OR APPROVED EQUAL. CONTRACTOR TO SUBMIT PLANTING SOIL SAMPLE FOR LANDSCAPE ARCHITECT'S APPROVAL.
18. ALL PLANT MATERIAL SHALL BE FLORIDA NO. 1 OR BETTERAS SET FORTH IN THE FLORIDA DEPARTMENT OF AGRICULTURE "GRADES AND STANDARDS FOR NURSERY PLANTS" SECOND EDITION FEB. 1998 INCLUDING REVISIONS AND WHICH MEET OR EXCEED THE SIZES INDICATED IN THE PLANTING SCHEDULE AND DETAILS.
19. ALL TREES SHALL BE STAKED IN A GOOD WORKMANLIKE MANNER. NO NAIL STAKING PERMITTED. (REFER TO BRACING NOTES AND PLANTING DETAILS)
20. AFTER REMOVAL OR RELOCATION OF EXISTING TREES AND PALMS, ALL REMAINING HOLES SHALL BE BACK FILLED AROUND AND UNDER ROOT BALL WITH WASHED BEACH SAND. SOD DISTURBED AREA, IF REQUIRED. ALL SHRUB BEDS TO BE INSTALLED WITH WASHED BEACH SAND. (SEE SPEC)
21. ALL TREES, PALMS, SHRUBS AND GROUND COVER PLANTS SHALL BE FERTILIZED AT INSTALLATION, WITH LONG LASTING FERTILIZER, ACCORDING TO MANUFACTURERS' RECOMMENDATIONS AND BASED ON SOIL TESTS OF EXISTING ON-SITE SOILS.
22. ALL EXISTING PLANT MATERIAL TO REMAIN, SHALL BE PROTECTED DURING ALL CONSTRUCTION PHASES. ANY PLANT MATERIAL SCARRED OR DESTROYED DESIGNATED TO REMAIN MUST BE REPLACED AT THE CONTRACTOR'S EXPENSE WITH SIMILAR SPECIES SIZE AND QUALITY.
23. ALL TREES ON SOD AREA SHALL RECEIVE A HARDWOOD / PINE NEEDLE MULCH MIX RING 2' IN DIAMETER TYPICAL. MULCH TO BE APPROVED BY LANDSCAPE ARCHITECT PRIOR TO PURCHASE AND/OR INSTALLATION.
24. ALL PLANTING AREAS SHALL BE MULCHED WITH SHREDDED ORGANIC MULCH TO A MINIMUM OF 3"; WITH THE EXCEPTION OF BEACH PLANTING. DO NOT USE CYPRESS OR RED MULCH.
25. ALL TREES SHALL HAVE 2" CALIPER AT D.B.H. MINIMUM FOR A 10' HEIGHT TREE, UNLESS NOTED OTHERWISE.
26. ALL 1 GALLON MATERIAL SHALL HAVE 12" SPREAD MINIMUM, ALL 3 GALLON MATERIAL TO HAVE 20-24" SPREAD MINIMUM.
27. ALL PLANTING AREAS WITHIN THE LIMITS OF WORK SHALL RECEIVE 100% COVERAGE BY AUTOMATIC IRRIGATION SYSTEM (DRIP PREFERRED) UNLESS OTHERWISE DIRECTED BY OWNER. SEE

IRRIGATION PLANS FOR ADDITIONAL SPECIFICATIONS.

28. LANDSCAPE CONTRACTOR TO COORDINATE INSTALLATION OF IRRIGATION SYSTEM WITH IRRIGATION CONTRACTOR. IRRIGATION TIME CLOCK TO BE HARD WIRED ON COMPLETION - RESPONSIBILITY OF IRRIGATION CONTRACTOR. LANDSCAPE CONTRACTOR SHALL HAND WATER OR ARRANGE FOR WATERING DURING PLANTING UNTIL IRRIGATION SYSTEM IS 100% OPERABLE. THIS IS THE RESPONSIBILITY OF THE LANDSCAPE CONTRACTOR.
29. LANDSCAPE CONTRACTOR SHALL COORDINATE HIS WORK WITH ALL OTHER APPROPRIATE CONTRACTORS.
30. THE LANDSCAPE CONTRACTOR SHALL AT ALL TIMES KEEP THE JOB SITE CLEAN AND FREE FROM ACCUMULATION OF WASTE MATERIAL, DEBRIS, AND RUBBISH.
31. LANDSCAPE PLAN SHALL BE INSTALLED IN COMPLIANCE WITH ALL LOCAL CODES.
32. ON-SITE LAYOUT OF PLANT MATERIAL SHALL BE COORDINATED WITH LANDSCAPE ARCHITECT AT THE TIME OF INSTALLATION.
33. ALL PLANTS, MATERIALS, WORKMANSHIP, AND INVOICE APPROVAL ARE SUBJECT TO THE APPROVAL OF THE LANDSCAPE ARCHITECT.
34. CONTRACTOR TO FLAG ALL PROPOSED TREE AND PALM LOCATIONS FOR OWNER AND LANDSCAPE ARCHITECT'S APPROVAL PRIOR TO EXCAVATION OR INSTALLATION. PLAN LOCATIONS ARE SUBJECT TO FIELD ADJUSTMENTS BY THE LANDSCAPE ARCHITECT.
35. LANDSCAPE ARCHITECT TO APPROVE ALL SHRUB AND GROUNDCOVER PLANTING LOCATION AND LAYOUT PRIOR TO INSTALLATION.
36. CONTRACTOR SHALL PROVIDE DIGITAL PHOTOGRAPHIC DOCUMENTATION DURING INSTALLATION FOR LANDSCAPE ARCHITECT'S REVIEW, DAILEY.
37. LANDSCAPE CONTRACTOR TO INSURE ALL PLANT MATERIAL IS INSTALLED AT THE CORRECT ELEVATION, REFER TO GRADING PLAN.
38. THE LANDSCAPE CONTRACTOR SHALL MAINTAIN OR COORDINATE WITH THE IRRIGATION CONTRACTOR AND LANDSCAPING MAINTENANCE SERVICES ALL PLANTING INCLUDING WATERING, MOWING, MULCHING, WEED, AND PEST CONTROL UNTIL FINAL ACCEPTANCE BY THE LANDSCAPE ARCHITECT AND OWNER.
39. THE AWARDED LANDSCAPE CONTRACTOR SHALL SUBMIT A PROPOSED BID / CONTRACT WITH PRICING FOR ALL PLANT MATERIAL INCLUDING (WARRANTY, LABOR, TRANSPORTATION, RELOCATION, SITE MAINTENANCE AND PREPARATION) AS PER THE LANDSCAPE ARCHITECT'S SPECIFICATIONS AND OR PLANTING PLANS.
40. THE LANDSCAPE CONTRACTOR'S CONTRACT SHALL ACKNOWLEDGE ALL TERMS AND CONDITIONS SET FORTH UNDER THESE GENERAL LANDSCAPE NOTES AND SPECIFICATIONS.
41. THESE DRAWINGS, DOCUMENTS, AND ALL CONTENTS ARE THE PROPERTY OF RAYMOND JUNGLES, INC. ALL RIGHTS ARE RESERVED. UNAUTHORIZED USE OR PRODUCTION, IN PART OR WHOLE, FOR ANY PURPOSE IS UNLAWFUL AND PROHIBITED EXCEPT BY EXPRESS WRITTEN CONSENT.
42. THE CONTRACTOR IS RESPONSIBLE FOR OBTAINING ANY PERMITS OR APPROVALS FROM THE FEDERAL, STATE OR LOCAL GOVERNMENT REQUIRED FOR THE WORK INCLUDED IN THIS CONTRACT AND ON THESE DRAWINGS.
43. PLANT SHRUBS IN CIRCULAR PITS WITH A DIAMETER 16" GREATER THAN ROOTBALL OR CONTAINER. PLANT TREES IN CIRCULAR PITS WITH A DIAMETER 36" GREATER THAN ROOTBALL OR CONTAINER,. PLACE PLANTS WITH BEST "FACE" FORWARD.
44. BACKFILL ALL PLANTING PITS WITH THE FOLLOWING MIXTURE : ½ ONSITE SOIL, ½ CLEAN FRIABLE TOPSOIL. SUBMIT TOPSOIL SAMPLE AND SOIL TEST ANALYSIS FOR APPROVAL BY LANDSCAPE ARCHITECT, (SEE PLANTING DETAILS). REMOVE EXCESS SOIL EXCAVATED FROM PLANT PIT FROM THE SITE OR DISTRIBUTE ON-SITE AS DIRECTED BY L.A.
45. VERIFY ALL QUANTITIES IN THE PLANTING SCHEDULE AND INSTALL ALL PLANTS AND MATERIALS AS INDICATED IN THE PLAN. PROVIDE COMPOSITE UNIT PRICES FOR EACH PLANT, WHICH INCLUDE ALL OTHER INCIDENTAL MATERIALS, (I.E. MULCH, FERTILIZER, TOPSOIL, LABOR, ETC.)
46. NOTIFY THE OWNER AND LANDSCAPE ARCHITECT OF ANY UNFORESEEN CONDITIONS, I.E., COMPACTED SOIL / SUBGRADE, POOR DRAINAGE, UNCONSOLIDATED SOIL, EROSION, UTILITY CONFLICTS, EXCESSIVE SUN OR SHADE, ETC., PRIOR TO PROCEEDING WITH LANDSCAPE INSTALLATION.
47. ALL PLANTS, MATERIALS AND WORKMANSHIP ARE SUBJECT TO THE APPROVAL OF THE LANDSCAPE ARCHITECT AND OWNER.

GENERAL TREE BRACING NOTES AND SPECIFICATIONS:

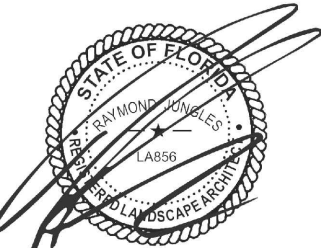
TREES AND PALMS GREATER THAN 6" DBH TO BE BRACED WITH PROPS:

1. CHOOSE THE CORRECT SIZE, LENGTH, AND NUMBER OF PROPS TO BE USED (PRESSURE TREATED (PT), TIMBER BAMBOO (GUADUA ANGUSTIFOLIA) 3" DIA.).
2. ALL (PRESSURE TREATED (PT) 2"x4", 4"x4"). STAKES SHALL BE PAINTED AS SPECIFIED BY THE LANDSCAPE ARCHITECT. WRAP AT LEAST 5 LAYERS OF BURLAP AROUND TRUNK OF THE PALM AT LEAST 4 INCHES WIDER THAN THE BATTENS BEING USED. BATTENS SHOULD BE MOUNTED AT A POINT 1/3 OF THE DISTANCE FROM GROUND TO THE CLEAR TRUNK OF THE TREE OR PALM, BUT NOT LESS THAN 4 FEET, WHICHEVER IS GREATER.
3. SELECT THE PROPER LENGTH AND SIZE OF BATTENS (PT 2"x4"x12"-16")
4. USE THE SAME NUMBER OF BATTENS AS PROPS BEING USED.
5. PLACE THE BATTENS VERTICALLY AND EVENLY SPACED AGAINST THE BURLAP.
6. SECURE THE BATTENS IN PLACE WITH METAL OR PLASTIC BANDING STRAPS. DO NOT NAIL TREE.
7. WEDGE LOWER END OF PROP INTO SOIL AND SECURE WITH A 2"x4"x30" STAKE. PROPS SHOULD BE INSTALLED AT A 30 TO 40 DEGREE ANGLE FROM THE BATTENS AND OF SUFFICIENT LENGTH TO REACH THE GROUND. NOTE: ON STRAIGHT TREES OR PALMS OR TREES, SPACE PROPS EQUAL DISTANCE AROUND TREE OR PALM ON CURVED (CHARACTER) PALMS OR TREES, SPACE PROPS AGAINST THE FRONT OF THE CURVE OF THE PALM.
8. CUT A SMOOTH ANGLE AT THE END OF THE PROPS. ALIGN WITH AND NAIL INTO BATTENS. DO NOT PENETRATE TREE OR PALM WITH NAILS.
9. IF IT APPEARS THAT ADDITIONAL CONSTRUCTION WORK WILL TAKE PLACE NEAR TO OR IN THE VICINITY OF THE NEWLY BRACED TREES OR PALMS, THEN PROPS ARE TO BE CLEARLY LABELED WITH THE STATEMENT, "DO NOT REMOVE."
10. PROPS ARE NOT TO BE REMOVED UNTIL APPROVED BY THE LANDSCAPE CONTRACTOR.

TREES AND PALMS LESS THAN 6" DBH TO BE BRACED BY GUYING:

1. CHOOSE THE CORRECT SIZE AND NUMBER OF STAKES AND SIZE OF SLEEVE AND WIRE. GUYING SHALL BE COMPLETED WITHIN 48 HOURS OF PLANTING THE TREE.
2. CUT LENGTHS OF STAKING SLEEVE TO EXTEND 2 INCHES PAST TREE TRUNK WHEN WRAPPING AROUND.
3. SPACE STAKES EVENLY ON OUTSIDE OF WATER RING AND DRIVE EACH FIRMLY INTO THE GROUND. STAKES SHOULD BE DRIVEN AT A 30 DEGREE ANGLE WITH THE POINT OF THE STAKE TOWARD THE TREE UNTIL 4 TO 5 INCHES ARE LEFT SHOWING.
4. PLACE THE SLEEVE AROUND THE TRUNK JUST ABOVE THE LOWEST BRANCH.
5. THREAD THE WIRE THROUGH THE SLEEVE AND PAST THE STAKE, ALLOWING APPROXIMATELY 2 FEET OF EACH OF THE TWO ENDS BEYOND THE STAKE BEFORE CUTTING THE WIRE.
6. TWIST WIRE AT RUBBER SLEEVE TO KEEP IT IN PLACE
7. PULL WIRE DOWN AND WIND BOTH ENDS AROUND STAKE TWICE. TWIST WIRE BACK ONTO ITSELF TO SECURE IT BEFORE CUTTING OFF THE EXCESS.
8. THE ABOVE PROCEDURES ARE TO BE FOLLOWED FOR EACH STAKE, KEEPING THE TREE STRAIGHT AT ALL TIMES.
9. THERE SHOULD BE A 1 TO 3 INCH SWAY IN THE TREE (THE WIRES SHOULD NOT BE PULLED TIGHT) FOR BEST ESTABLISHMENT.
10. FLAG THE GUY WIRES WITH SURVEYOR'S FLAGGING OR APPROVED EQUAL FOR SAFETY.
11. ANY WIRES ARE NOT TO BE REMOVED UNTIL APPROVED BY LANDSCAPE ARCHITECT.

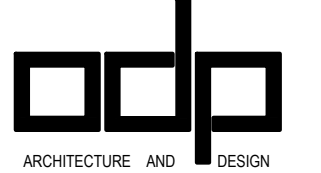
OWNER
4541 NBR LLC
4541 NORTH BAY ROAD, MIAMI BEACH, FL 33140
ARCHITECT
AA 2600999
O'DONNELL, DANNWOLF AND PARTNERS ARCHITECTS INC. 2432 HOLLYWOOD BLVD HOLLYWOOD, FL 33020 T:954.518.0833
DESIGN CONSULTANT
SAOTA PTY LTD
109 HATFIELD STREET, GARDENS, CAPE TOWN, 8001 SOUTH AFRICA 071021 468 4400
LANDSCAPE ARCHITECT
RAYMOND JUNGLES, INC.
2964 AVIATION AVENUE, COCONUT GROVE, FL 33133 T:305.665.6777



RAYMOND JUNGLES, INC.  
FL. LANDSCAPE ARCHITECT  
Lic. # LA0000856

THIS ITEM HAS BEEN ELECTRONICALLY SIGNED AND SEALED BY RAYMOND JUNGLES LICENSE NUMBER LA0000856, USING A DIGITAL SIGNATURE AND DATE. PRINTED COPIES OF THIS DOCUMENT ARE NOT CONSIDERED SIGNED AND SEALED AND SIGNATURE MUST BE VERIFIED ON ANY ELECTRONIC COPIES.

jungles  
RAYMOND JUNGLES INC  
Landscape Architect FASLA



2432 HOLLYWOOD BOULEVARD  
HOLLYWOOD, FLORIDA 33020  
T: 954.518.0833 | F:954.518.0131  
www.odparchitects.com  
AA 26000996

DESIGN CONSULTANT



PROJECT

4541 NORTH BAY RD

4541 NORTH BAY ROAD, MIAMI BEACH, FL 33140

REVISIONS


SCALE: AS NOTED  
DATE: 04/11/22  
DRAWN BY: JS  
DRAWING TITLE:

PLANTING NOTES & SPECIFICATIONS

SHEET NO.

L-110



