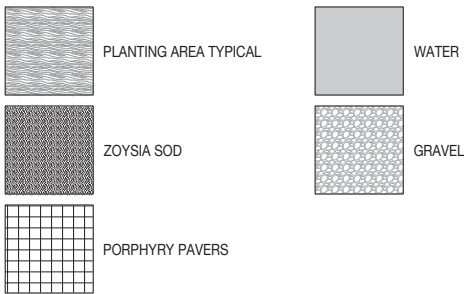


MATERIALS NOTES

- CONTRACTOR TO VERIFY ALL QUANTITIES. IN CASE OF ANY DISCREPANCIES, GRAPHICALLY SHOWN MATERIAL QUANTITIES SHALL TAKE PRECEDENCE.
- ALL CONSTRUCTION AND MATERIALS NOT SPECIFICALLY ADDRESSED IN THE CONTRACT DOCUMENTS OR SPECIFICATIONS SHALL BE IN ACCORDANCE WITH LOCAL, STATE AND FEDERAL JURISDICTIONS AND GOVERNING BODIES/AGENCIES STANDARDS.
- THE CONTRACTOR SHALL PROVIDE A FULL-SCALE MOCKUP AND RECEIVE APPROVAL FROM THE LANDSCAPE ARCHITECT FOR ALL SYSTEMS BEFORE BEGINNING CONSTRUCTION OF PAVEMENT.
- EXPANSION JOINTS SHALL BE PROVIDED WHERE FLATWORK MEETS VERTICAL STRUCTURES, SUCH AS WALLS, CURBS, STEPS, AND OTHER HARDSCAPE ELEMENTS.
- EXPANSION JOINTS SHALL ALSO BE PROVIDED AT MATERIAL CHANGES. EXPANSION JOINT MATERIALS/METHODS SHALL BE SUBMITTED TO THE LANDSCAPE ARCHITECT FOR REVIEW AND APPROVAL PRIOR TO INSTALLATION.
- CONTROL JOINTS SHOULD BE SPACED NO GREATER THAN TEN (10) LINEAR FEET MAXIMUM, UNLESS OTHERWISE SPECIFIED. EXPANSION JOINTS SHOULD BE SPACED NO GREATER THAN FORTY (40) LINEAR FEET MAXIMUM, UNLESS OTHERWISE SPECIFIED. CONTRACTOR SHALL ADVISE ON OTHER JOINTS AS NEEDED TO MINIMIZE CRACKING. THIS INFORMATION SHALL BE SUBMITTED TO THE LANDSCAPE ARCHITECT FOR REVIEW AND APPROVAL PRIOR TO INSTALLATION.
- CONTROL JOINTS SHALL BE PROVIDED AS SPECIFIED IN THE CONTRACT DOCUMENTS. CONTROL JOINT MATERIALS, METHODS AND RECOMMENDATIONS ON ADDITIONAL
- CONTROL JOINTS TO MINIMIZE CRACKING SHALL BE SUBMITTED TO THE LANDSCAPE ARCHITECT FOR REVIEW AND APPROVAL.
- ALL STEPS SHALL HAVE TWELVE (12) INCH TREADS AND SIX (6) INCH RISERS, UNLESS OTHERWISE SPECIFIED.
- HOLD TOP OF WALLS AND FENCES LEVEL, UNLESS OTHERWISE SPECIFIED.
- CONTRACTOR SHALL NOT INSTALL WORK LOCATED ON TOP OF ARCHITECTURAL STRUCTURES WITHOUT FIRST REVIEWING ARCHITECTURAL DRAWINGS.
- SAMPLES OF SPECIFIED MATERIALS SHALL BE SUBMITTED TO THE LANDSCAPE ARCHITECT FOR REVIEW AND APPROVAL PRIOR TO ORDERING FOR JOB.

MATERIALS LEGEND



SEAL (S TYLER NIELSEN - LA6667067)



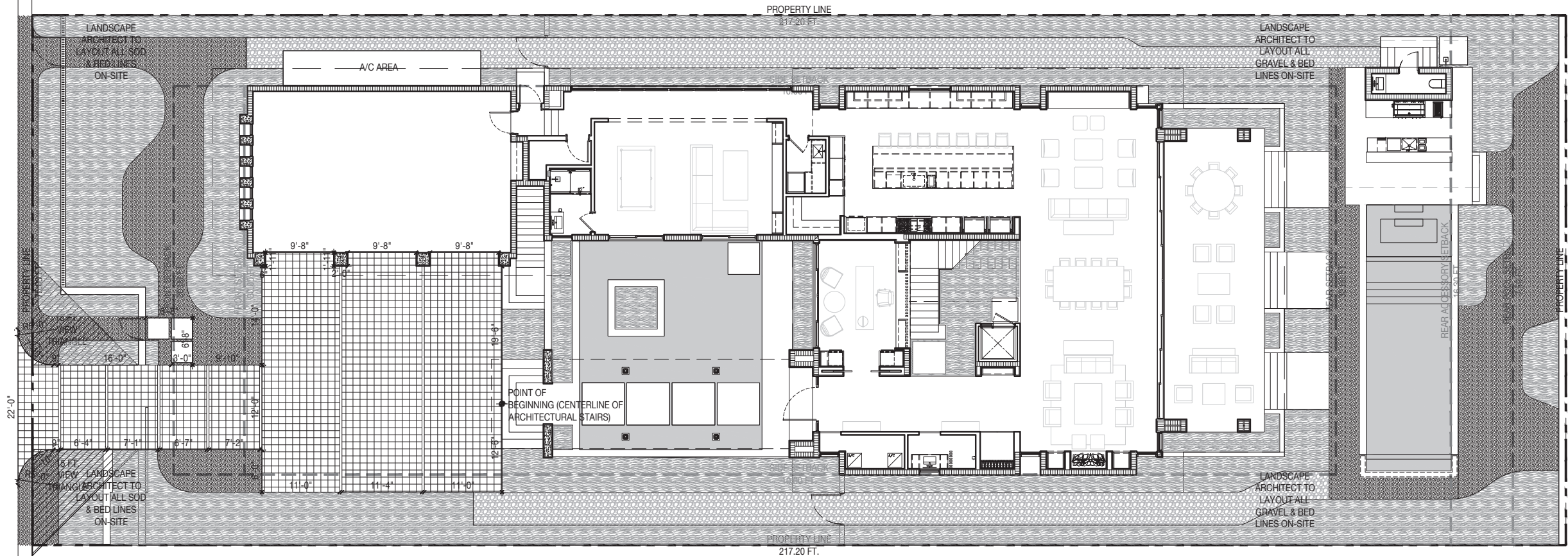
03.01.2022

MATERIALS PLAN

DATE	ISSUE
01.28.2022	COORDINATION
02.10.2022	DRB SUBMITTAL
03.01.2022	REVISION 1



L300



6525 ALLISON ROAD

CHRISTODOULUS | 6525 ALLISON ROAD | MIAMI BEACH, FLORIDA 33141

SEAL (S TYLER NIELSEN - LA6667067)



LAYOUT PLAN & NOTES	
DATE	ISSUE
01.28.2022	COORDINATION
02.10.2022	DRB SUBMITTAL
03.01.2022	REVISION 1

LAYOUT NOTES

- LAYOUT AND VERIFY DIMENSIONS PRIOR TO CONSTRUCTION. NOTIFY LANDSCAPE ARCHITECT OF ANY DISCREPANCIES. LANDSCAPE ARCHITECT TO REVIEW AND APPROVE ALL LAYOUTS CONTAINED IN THE CONSTRUCTION DOCUMENTS PRIOR TO CONSTRUCTION.
- WRITTEN DIMENSIONS SHALL TAKE PRECEDENCE OVER SCALED DIMENSIONS. DO NOT SCALE DIMENSIONS FROM REDUCED DRAWINGS.
- DIMENSIONS REFERRED TO AS "EQUAL" INDICATE SPACING WHICH IS EQUIDISTANT MEASURED TO THE CENTERLINES.
- MEASUREMENTS ARE TO THE FINISHED FACE OF BUILDINGS, WALLS, OR OTHER FIXED SITE IMPROVEMENTS. DIMENSIONS TO CENTERLINES ARE IDENTIFIED AS SUCH.
- INSTALL INTERSECTING ELEMENTS AT 90-DEGREE ANGLES, UNLESS OTHERWISE INDICATED. MAINTAIN HORIZONTAL ALIGNMENT OF ADJACENT ELEMENTS AS INDICATED IN CONTRACT DOCUMENTS.
- SPECIAL CONSIDERATION IS GIVEN TO THE DESIGN AND INTENDED RELATIONSHIP BETWEEN ARCHITECTURE, PLANTING AREAS AND PAVING SYSTEMS. PAVEMENT JOINTING, PAVERS, STONE, FINISHES AND GRADES HAVE BEEN STRICTLY COORDINATED IN THE CONTRACT DOCUMENTS. CONSTRUCTION OF THESE SYSTEMS SHALL BE STRICTLY COORDINATED.



L500

PLANTING NOTES

1.

PLANT MATERIAL IS TO BE HEALTHY SPECIMENS FREE FROM DISEASE OR DAMAGE, AND IS TO BE MAINTAINED IN EXCELLENT CONDITION WHILE ON THE JOBSITE. LANDSCAPE ARCHITECT SHALL INSPECT PLANT MATERIAL UPON ARRIVAL TO JOBSITE AND WILL REJECT PLANT MATERIAL THAT DOES NOT MEET THE STANDARDS DESCRIBED WITHIN THE CONTRACT DOCUMENTS.
2.

THE LANDSCAPE ARCHITECT WILL PERIODICALLY INSPECT PLANT MATERIAL STOCKPILED AND/OR PLANTED ON SITE DURING THE COURSE OF CONSTRUCTION. PLANT MATERIAL NOT MEETING THE STANDARDS CONTAINED WITHIN CONTRACT DOCUMENTS SHALL BE REPLACED AT NO COST TO THE OWNER.
3.

PROVIDE MATCHING SIZES AND FORMS FOR EACH PLANT OF THE SAME SPECIES UNLESS OTHERWISE INDICATED.
4.

CONTRACTOR TO VERIFY ALL QUANTITIES. IN CASE OF DISCREPANCIES, GRAPHICALLY SHOWN QUANTITIES SHALL TAKE PRECEDENCE.
5.

ALL MATERIALS USED SHALL CONFORM TO THE GUIDELINES ESTABLISHED BY THE CURRENT AMERICAN STANDARDS FOR NURSERY STOCK, PUBLISHED BY THE AMERICAN ASSOCIATION OF NURSERYMEN.
6.

ALL PLANT MATERIAL SHALL BE INSTALLED PLUMB AND PER THE SPECIFICATIONS CONTAINED WITHIN THE CONTRACT DOCUMENTS. ANY NECESSARY STAKING AND/OR OTHER SUPPORTS MATERIALS/METHODS SHALL BE SUBMITTED TO THE LANDSCAPE ARCHITECT FOR REVIEW AND APPROVAL PRIOR TO INSTALLATION.
7.

THE CONTRACTOR SHALL PRUNE EXISTING AND/OR NEW TREES ONLY PER LANDSCAPE ARCHITECT DIRECTION.
8.

THE CONTRACTOR SHALL STAKE THE LOCATIONS OF ALL TREES AND B&B SHRUBS FOR LANDSCAPE ARCHITECT REVIEW AND APPROVAL, PRIOR TO INSTALLATION.
9.

ALL ROOT-WRAPPING MATERIALS THAT ARE NOT BIO-DEGRADABLE SHALL BE REMOVED FROM THE ROOT BALL. ROOT BALLS SHALL BE FREE OF WEEDS.
10.

SPECIFIED PLANT MATERIAL SIZES SHALL BE CONSIDERED MINIMUM SIZES.
11.

FINISH GRADE OF PLANTING BEDS SHALL BE ONE (1) INCH BELOW ADJACENT FLATWORK, UNLESS SPECIFIED OTHERWISE.
12.

MULCH OR PLANTING BED DRESSING SHALL BE PLACED IN ALL PLANTING AREAS AS SPECIFIED. MULCH OR PLANTING BED DRESSING SHALL NOT BE PLACED WITHIN SIX (6) INCHES OF TREE TRUNKS. MULCHING SHOULD BE REPEATED ANNUALLY DURING THE AUTUMN TO A THREE (3) INCH DEPTH.
13.

ALL PLANT MATERIAL SHOULD RECEIVE AN ORGANIC FERTILIZER IN LIMITED APPLICATION FOLLOWING INSTALLATION. TYPE AND APPLICATION RATE AND METHOD OF APPLICATION TO BE SPECIFIED BY THE CONTRACTOR AND APPROVED BY THE LANDSCAPE ARCHITECT.
14.

EXCESS FERTILIZER SHALL BE DISPOSED OF PROPERLY OFF-SITE. IT SHALL NOT BE DISPOSED OF IN STORM DRAINS AND/OR DRYWELLS.
15.

STOCKPILED PLANT MATERIAL TO BE PLACED IN THE SHADE AND PROPERLY HAND-WATERED UNTIL PLANTED.
16.

MINI-NUGGET TYPE DECORATIVE BARK MULCH WILL BE USED TO RETURN NUTRIENTS TO THE SOIL, REDUCE MAINTENANCE AND MINIMIZE EVAPORATION FOR AREAS APPROXIMATE TO THE RESIDENCE. LARGER SHREDDED BARK MULCH WILL BE USED FOR STEEP AREAS SO SLOUGHING IS LESS LIKELY TO OCCUR.
17.

PRESERVE & PROTECT ALL EXISTING VEGETATION INDICATED TO REMAIN AT ALL TIMES.
18.

ALL VEGETATION PROPOSED FOR OUTSIDE THE BUILDING ENVELOPE TO BE NATIVE UNLESS OTHERWISE NOTED. PLANTING THAT OCCURS OUTSIDE THE BUILDING ENVELOPE IS FOR RESTORATION PURPOSES ONLY OR IS SPECIFIC TO UTILITIES RESTORATION.
19.

SIX (6) INCH PLANT MIX SHALL BE PROVIDED FOR ALL LAWN, TURF, AND NATIVE PLANTING ZONES. 18 INCH PLANT MIX SHALL BE PROVIDED FOR ALL PERENNIAL PLANTING BEDS UNLESS OTHERWISE NOTED.
20.

ALL PLANT MATERIAL SHALL BE FLORIDA GRADE #1 OR BETTER AS OUTLINED IN GRADES AND STANDARDS FOR NURSERY PLANTS, PARTS I AND II OF THE LATEST EDITION, PUBLISHED BY THE FLORIDA DEPARTMENT OF AGRICULTRE AND CONSUMER SERVICES.

CITY OF MIAMI BEACH LANDSCAPE LEGEND

CITY OF MIAMI BEACH
LANDSCAPE LEGEND
INFORMATION REQUIRED TO BE PERMANENTLY AFFIXED TO PLANS
Zoning District RS-3 Lot Area 16,290 Acres .37

OPEN SPACE

A. Square feet of required Open Space as indicated on site plan:
Lot Area = 16,290 s.f. x 0.09 % = 1,466 s.f.
B. Square feet of parking lot open space required as indicated on site plan:
Number of parking spaces NA x 30 s.f. parking space = NA
C. Total square feet of landscaped open space required: A+B= 1,466 6,562

LAWN AREA CALCULATION
A. Square feet of landscaped open space required 1,466 6,562
B. Maximum lawn area (soil) permitted: 50 % x 6,562 3,281 1,200

TREES
A. Number of trees required per lot or net lot acre, less existing number of trees meeting minimum requirements:
NA trees x .37 net lot acres - number of existing trees= 16 28 (7 MITIGATION)
B. % Natives required: Number of trees provided x 30% = 10 36
C. % Low maintenance / drought and salt tolerant required:
Number of trees provided x 50% = 11 35
D. Street Trees (maximum average spacing of 20' o.c.)
75 linear feet along street divided by 20' = 4 4
E. Street tree species allowed directly beneath power lines:
(maximum average spacing of 20' o.c.):
linear feet along street divided by 20' = _____ _____

SHRUBS
A. Number of shrubs required: Sum of lot and street trees required x 12= 240 285
B. % Native shrubs required: Number of shrubs provided x 50% = 142 145

LARGE SHRUBS OR SMALL TREES
A. Number of large shrubs or small trees required: Number of required shrubs x 30% = 24 70
B. % Native large shrubs or small trees required: Number of large shrubs or small trees provided x 50% = 35 70

*RS1 - RS4 Residential lots (TREE REQUIREMENTS):
5 Trees + 1 Tree for every 1,000 square feet for lots over 6,000 square feet total.

PLANTING SCHEDULE

ABR.	QUANTITY	BOTANICAL NAME	COMMON NAME	SPECIFICATIONS
TREES				
CRO	2	CLUSIA ROSEA	AUTOGRAPH TREE	CHARACTER TRUNK - 24 FT. OA - PROVIDE LA IMAGES FOR APPROVAL
CDI	28	COCOLOBA DIVERSIFOLIA	PIGEON PLUM	4 IN. DBH 16 FT. OA.
CFE	1	CAESALPINIA FERREA	BRAZILIAN IRONWOOD	200 GAL. - MULTI TRUNK - 16 FT. OA
CFE	4	MYRCIANTHES FRAGRANS	SIMPSON'S STOPPER	4 IN. DBH 16 FT. OA.
CUV	1	COCOLOBA UVIFERA	SEAGRAPE	COLLECTED MULTI-TRUNK 30 FT. OA.
PALMS				
DPE	4	DYPsis PEMBANA	SAME	FG. CLUMP - 18-24 FT. OA
CNU1	6	COCOS NUCIFERA 'GREEN MALAYAN '	COCONUT PALM	FG. 12 FT. - GW CHARACTER CURVE
CNU2	15	COCOS NUCIFERA 'GREEN MALAYAN '	COCONUT PALM	FG. 24 FT. - GW CHARACTER CURVE
UNDERSTORY TREES & SHRUBS				
VO	124	VIBURNUM ODORATISSIMUM AWABUKI	AWABUKI SWEET VIBURNUM	7 GAL. - 3 FT. X 3 FT.
CI	24	CHRYSOBALANUS ICACO 'HORIZONTAL'	COCOPLUM	7 GAL. - 3 FT. X 3 FT.
GL	49	GYMNANTHES LUCIDA	CRABWOOD	25 GAL. - 8 FT. OA
GL2	49	GYMNANTHES LUCIDA	CRABWOOD	3 GAL. TO BE PLACED BETWEEN 25 GAL. SHRUBS
CE	18	CHAMAEDOREA ERUMPENS	BAMBOO PALM	15 GAL. - 16 FT. OA
PL	21	POLYALTHIA LONGIFOLIA PENDULA	MAST TREE	45 GAL. - 10 FT. OA
ACCENTS				
PG	47	PHILODENDRON GIGANTEUM	SAME	7 GAL.
PB	11	PHILODENDRON BERNARDOPAZI	CLIMBING PHILODENDRON	7 GAL. - PLACE AT TRUNK OF COCONUT PALMS
GROUNDCOVERS				
LP	353	PHILODENDRON 'LITTLE PHIL'	PHILODENDRON 'PHIL01'	3 GAL. - 18 IN. OC.
FJ	79	FARFUGIUM JAPONICUM 'CRISPATA'	PARSLEY LIGULARIA	3 GAL. - 18 IN. OC.
LM	773	LIRIOPE MUSCARI	LILYTURF	3 GAL. - 18 IN. OC.
VINE				
FP	5	FICUS PUMILA	CREEPING FIG IVY	3 GAL.
MISC.				
ALL SOD AREAS TO BE REPLACED WITH ZOYSIA 'ZEON'				
LANDSCAPE ARCHITECT TO HAVE \$2000 WHOLESALE ACCENT PLANT ALLOWANCE				
ALL POTS TO BE DRESSED W/ GREY RIVER ROCK 2-3 IN. DIA.				

SECOND LEVEL PLANTING SCHEDULE

ABR.	QUANTITY	BOTANICAL NAME	COMMON NAME	SPECIFICATIONS
ACCENTS				
PB	32	PHILODENDRON BIPINNATIFIDUM	SAME	7 GAL.
DA	7	DRACAENA ARBOREA	SAME	15 GAL.
BM	304	PHILODEDNRON 'BURLE MARX'	SAME	3 GAL.
GROUNDCOVERS				
EL	70	ERNODEA LITTORALIS	GOLDEN BEACH CREEPER	3 GAL. 18 IN. O.C.

ROOFTOP LEVEL PLANTING SCHEDULE

ABR.	QUANTITY	BOTANICAL NAME	COMMON NAME	SPECIFICATIONS
ACCENTS				
PB	2	PHILODENDRON BIPINNATIFIDUM	SAME	7 GAL.
DA	4	DRACAENA ARBOREA	SAME	15 GAL.
BM	62	PHILODEDNRON 'BURLE MARX'	SAME	3 GAL.

RELOCATED SCHEDULE

#	BOTANICAL NAME	COMMON NAME	DBH.	HT.	SPREAD	ACTION	NOTES
22	COCOS NUCIFERA	COCONUT PALM	8"	25'	10'	RELOCATE	LOCATION OF PLANT MATERIAL CONFLICTS WITH CONSTRUCTION ENVELOPE
31	COCOS NUCIFERA	COCONUT PALM	8"	25'	10'	RELOCATE	LOCATION OF PLANT MATERIAL CONFLICTS WITH CONSTRUCTION ENVELOPE
32	COCOS NUCIFERA	COCONUT PALM	8"	25'	10'	RELOCATE	LOCATION OF PLANT MATERIAL CONFLICTS WITH CONSTRUCTION ENVELOPE
33	COCOS NUCIFERA	COCONUT PALM	8"	25'	10'	RELOCATE	LOCATION OF PLANT MATERIAL CONFLICTS WITH CONSTRUCTION ENVELOPE
34	COCOS NUCIFERA	COCONUT PALM	8"	25'	10'	RELOCATE	LOCATION OF PLANT MATERIAL CONFLICTS WITH CONSTRUCTION ENVELOPE
35	COCOS NUCIFERA	COCONUT PALM	8"	25'	10'	RELOCATE	LOCATION OF PLANT MATERIAL CONFLICTS WITH CONSTRUCTION ENVELOPE

6525 ALLISON ROAD

CHRISTODOULUS | 6525 ALLISON ROAD | MIAMI BEACH, FLORIDA 33141

SEAL (S TYLER NIELSEN - LA6667067)

03.01.2022

PLANTING SCHEDULE & NOTES	
DATE	ISSUE
01.28.2022	COORDINATION
02.10.2022	DRB SUBMITTAL
03.01.2022	REVISION 1

L700

© COPYRIGHT NIELSEN LANDSCAPE ARCHITECTS, LLC

PLANT REFERENCE IMAGERY



BRAZILIAN IRONWOOD



AUTOGRAPH TREE



COCOS NUCIFERA



DYPSIS PEMBANA



PIGEON PLUM



BAMBOO PALM



COCOPLUM



CRABWOOD



AWABUKI SWEET
VIRBURNUM



CLIMBING PHILODENDRON



PHILODENDRON GIGATEUM



CREEPING FIG IVY



PARSLEY LIGULARIA



LILYTURF



SEAGRAPE



PHILODENDRON BIPINNATIFIDUM



DRACAENA ARBOREA



PHILODEDNRON 'BURLE MARK'



GOLDEN BEACH CREEPER



MAST TREE



SIMPSON'S STOPPER



PHILODENDRON 'PHIL01'

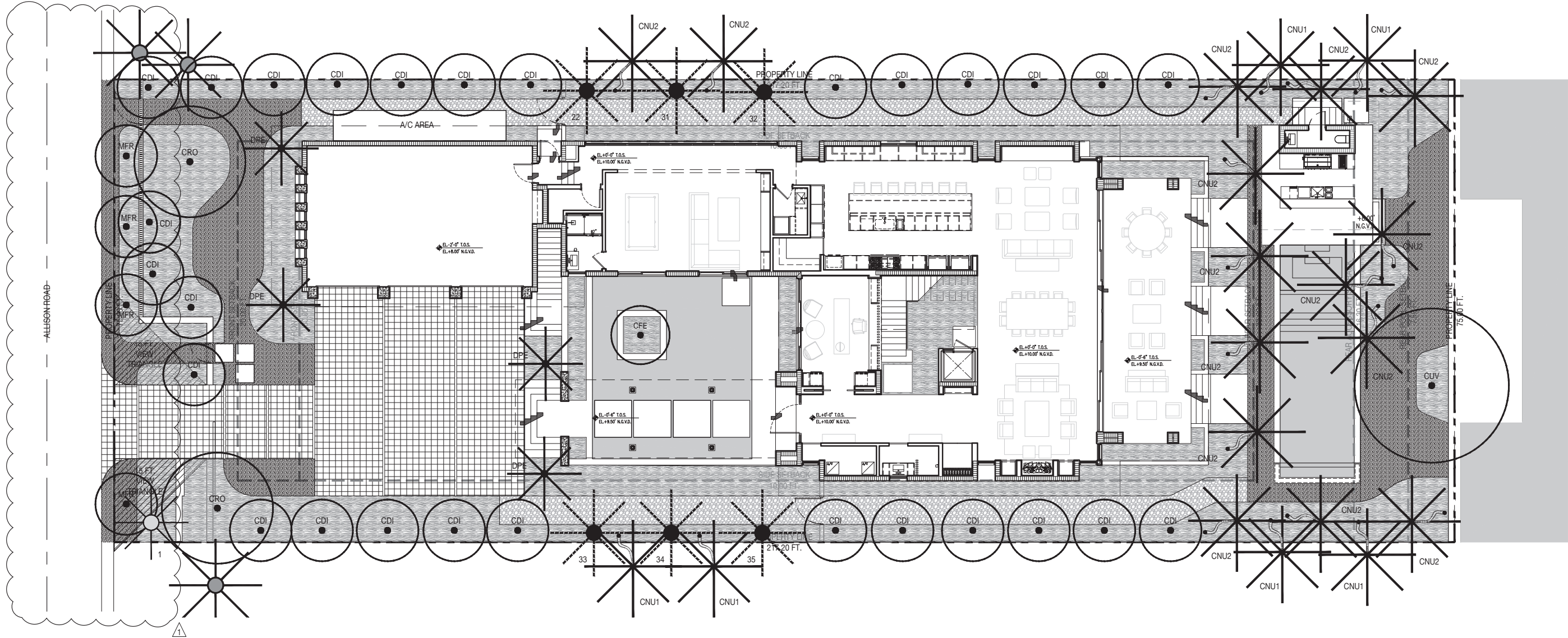
6525 ALLISON ROAD

CHRISTODOULUS | 6525 ALLISON ROAD | MIAMI BEACH, FLORIDA 33141

SEAL (S TYLER NIELSEN - LA6667067)



PLANT REFERENCE IMAGERY	
DATE	ISSUE
01.28.2022	COORDINATION
02.10.2022	DRB SUBMITTAL
03.01.2022	REVISION 1



6525 ALLISON ROAD

CHRISTODOULIS | 6525 ALLISON ROAD | MIAMI BEACH, FLORIDA 33141

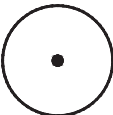



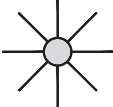
PLANTING SCHEDULE

ABR.	QUANTITY	BOTANICAL NAME	COMMON NAME	SPECIFICATIONS
TREES				
CRO	2	CLUSIA ROSEA	AUTOGRAPH TREE	CHARACTER TRUNK - 24 FT. OA - PROVIDE LA IMAGES FOR APPROVAL
CDI	28	COCCOLOBA DIVERSIFOLIA	PIGEON PLUM	16 FT. OA - 4 IN. DBH
CFE	1	CAESALPINIA FERREA	BRAZILIAN IRONWOOD	200 GAL. - MULTI TRUNK - 16 FT. OA
CFE	4	MYRCIANTHES FRAGRANS	SIMPSON'S STOPPER	4 IN. DBH 16 FT. OA.
CUV	1	COCCOLOBA UVIFERA	SEAGRAPE	COLLECTED MULTI-TRUNK 30 FT. OA.
PALMS				
DPE	4	DYPSIS PEMBANA	SAME	FG. CLUMP - 18-24 FT. OA
CNU1	6	COCOS NUCIFERA 'GREEN MALAYAN '	COCONUT PALM	FG. 12 FT. - GW CHARACTER CURVE
CNU2	15	COCOS NUCIFERA 'GREEN MALAYAN '	COCONUT PALM	FG. 24 FT. - GW CHARACTER CURVE

RELOCATED SCHEDULE

#	BOTANICAL NAME	COMMON NAME	DBH.	HT.	SPREAD	ACTION	NOTES
22	COCOS NUCIFERA	COCONUT PALM	8"	25'	10'	RELOCATE	LOCATION OF PLANT MATERIAL CONFLICTS WITH CONSTRUCTION ENVELOPE
31	COCOS NUCIFERA	COCONUT PALM	8"	25'	10'	RELOCATE	LOCATION OF PLANT MATERIAL CONFLICTS WITH CONSTRUCTION ENVELOPE
32	COCOS NUCIFERA	COCONUT PALM	8"	25'	10'	RELOCATE	LOCATION OF PLANT MATERIAL CONFLICTS WITH CONSTRUCTION ENVELOPE
33	COCOS NUCIFERA	COCONUT PALM	8"	25'	10'	RELOCATE	LOCATION OF PLANT MATERIAL CONFLICTS WITH CONSTRUCTION ENVELOPE
34	COCOS NUCIFERA	COCONUT PALM	8"	25'	10'	RELOCATE	LOCATION OF PLANT MATERIAL CONFLICTS WITH CONSTRUCTION ENVELOPE
35	COCOS NUCIFERA	COCONUT PALM	8"	25'	10'	RELOCATE	LOCATION OF PLANT MATERIAL CONFLICTS WITH CONSTRUCTION ENVELOPE

PLANTING LEGEND

-  PROPOSED TREE
-  PROPOSED PALM
-  RELOCATED PALM
-  OFF-SITE PALM
-  EXISTING PALM

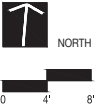
SEAL (S TYLER NIELSEN - LA6667067)



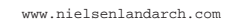
03.01.2022

TREE & PALM PLANTING PLAN

DATE	ISSUE
01.28.2022	COORDINATION
02.10.2022	DRB SUBMITTAL
03.01.2022	REVISION 1



L702



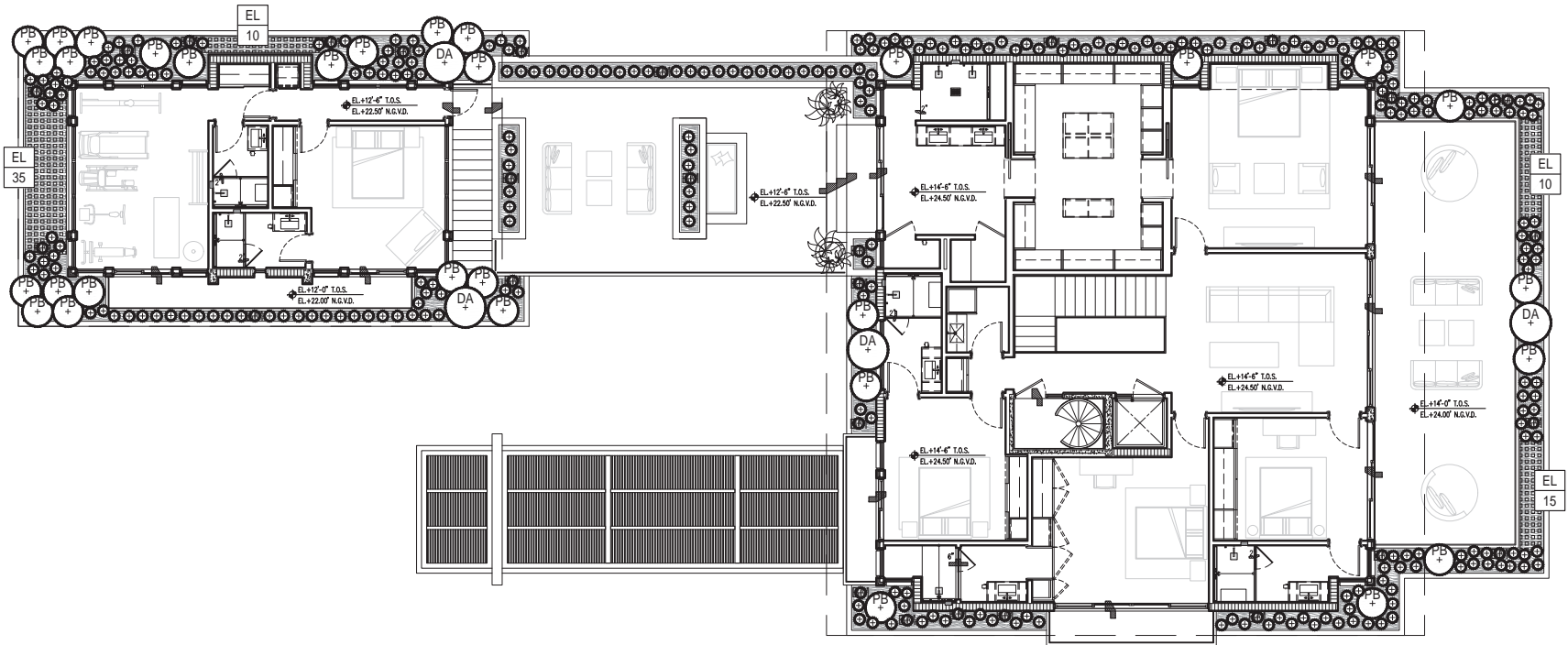
CHRISTODOLIS | 6525 ALLISON ROAD | MIAMI BEACH, FL 33141



ABR.	QUANTITY	BOTANICAL NAME	COMMON NAME	SPECIFICATIONS
UNDERSTORY TREES & SHRUBS				
VO	124	VIBURNUM ODORATISSIMUM AWABUKI	AWABUKI SWEET VIBURNUM	7 GAL. - 3 FT. X 3 FT.
CI	24	CHRYSOBALANUS ICACO 'HORIZONTAL'	COCOPLUM	7 GAL. - 3 FT. X 3 FT.
GL	49	GYMNANTHES LUCIDA	CRABWOOD	25 GAL. - 8 FT. OA
GL2	49	GYMNANTHES LUCIDA	CRABWOOD	3 GAL. TO BE PLACED BETWEEN 25 GAL. SHRUBS
CE	19	CHAMAEDOREA ERUMPENS	BAMBOO PALM	15 GAL. - 16 FT. OA
PL	21	POLYALTHIA LONGIFOLIA PENDULA	MAST TREE	45 GAL. - 10 FT. OA
ACCENTS				
PG	47	PHILODENDRON GIGANTEUM	SAME	7 GAL.
PB	11	PHILODENDRON BERNARDOPAZI	CLIMBING PHILODENDRON	7 GAL. - PLACE AT TRUNK OF COCONUT PALMS
GROUNDCOVERS				
LP	353	PHILODENDRON 'LITTLE PHIL'	PHILODENDRON 'PHILO1'	3 GAL. - 18 IN. OC.
FJ	79	FARFUGIUM JAPONICUM 'CRISPATA'	PARSLEY LIGULARIA	3 GAL. - 18 IN. OC.
LM	773	LIRIOPE MUSCARI	LILYTURF	3 GAL. - 18 IN. OC.
VINE				
FP	5	FICUS PUMILA	CREEPING FIG IVY	3 GAL.

RELOCATED PALM

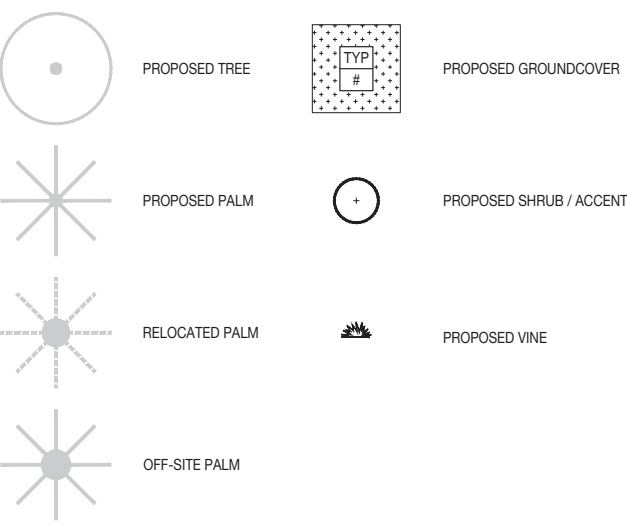
© COPYRIGHT NEILSEN LANDSCAPE ARCHITECTS, LLC



SECOND LEVEL PLANTING SCHEDULE

ABR.	QUANTITY	BOTANICAL NAME	COMMON NAME	SPECIFICATIONS
ACCENTS				
PB	32	PHILODENDRON BIPINNATIFIDUM	SAME	7 GAL.
DA	7	DRACAENA ARBOREA	SAME	15 GAL.
BM	304	PHILODEDNRON 'BURLE MARX'	SAME	3 GAL.
GROUNDCOVERS				
EL	70	ERNODEA LITTORALIS	GOLDEN BEACH CREEPER	3 GAL. 18 IN. O.C.

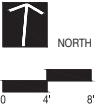
PLANTING LEGEND



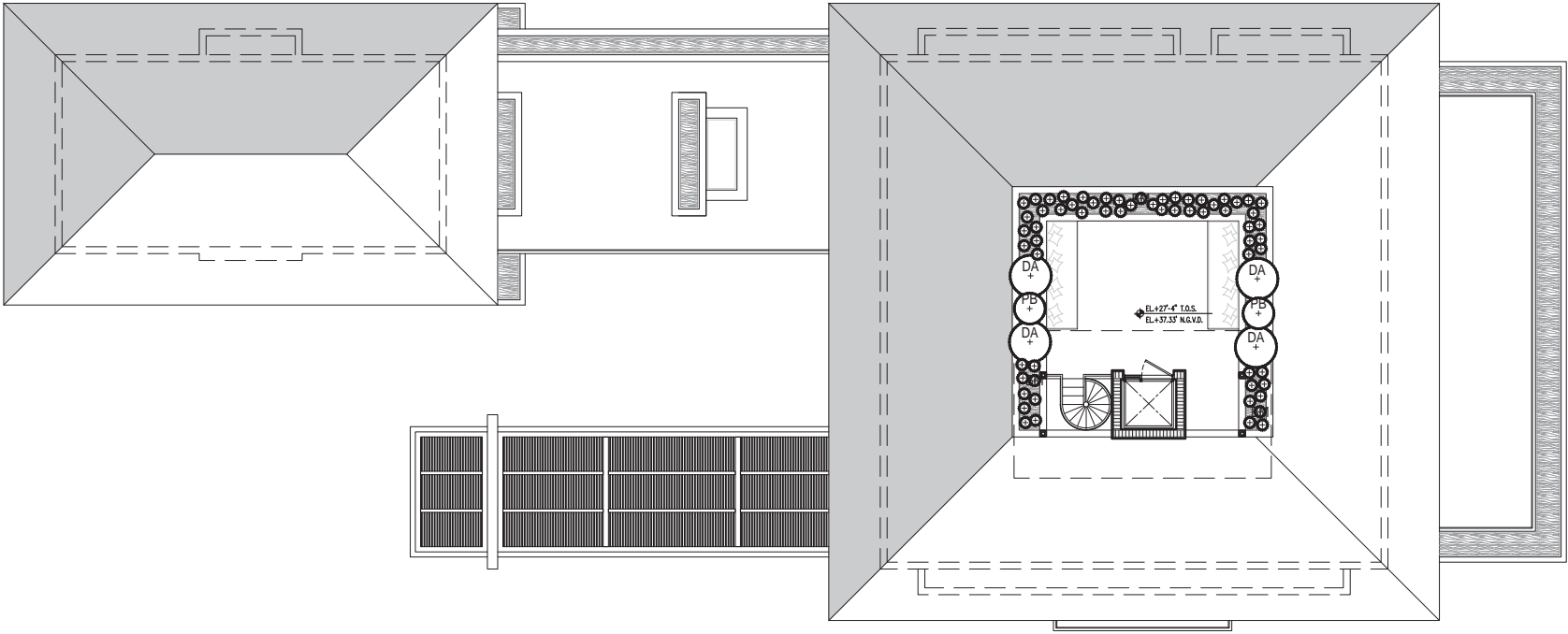
SEAL (S TYLER NIELSEN - LA6667067)



UNDERSTORY PLANTING PLAN SECOND LEVEL	
DATE	ISSUE
01.28.2022	COORDINATION
02.10.2022	DRB SUBMITTAL
03.01.2022	REVISION 1




L704



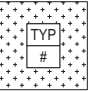
ROOFTOP LEVEL PLANTING SCHEDULE

ABR.	QUANTITY	BOTANICAL NAME	COMMON NAME	SPECIFICATIONS
ACCENTS				
PB	2	PHILODENDRON BIPINNATIFIDUM	SAME	7 GAL.
DA	4	DRACAENA ARBOREA	SAME	15 GAL.
BM	64	PHILODEDNRON 'BURLE MARX'	SAME	3 GAL.


PLANTING LEGEND




PROPOSED TREE




PROPOSED GROUNDCOVER




PROPOSED PALM




PROPOSED SHRUB / ACCENT



RELOCATED PALM




PROPOSED VINE



OFF-SITE PALM

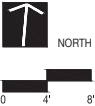
SEAL (S TYLER NIELSEN - LA6667067)



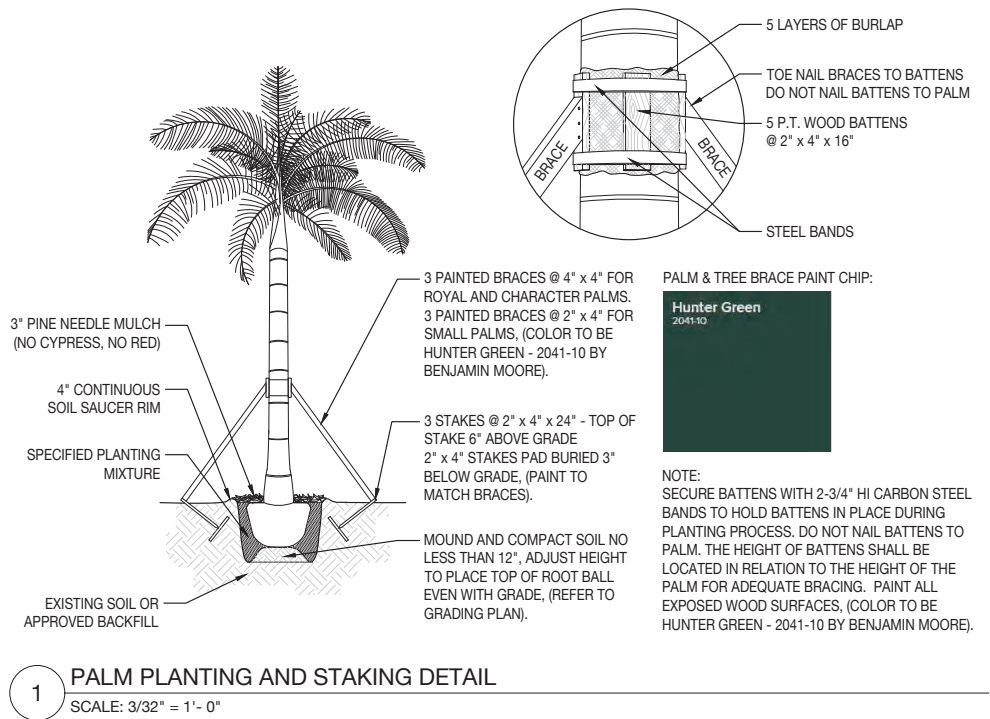
03.01.2022

UNDERSTORY PLANTING PLAN
THIRD LEVEL

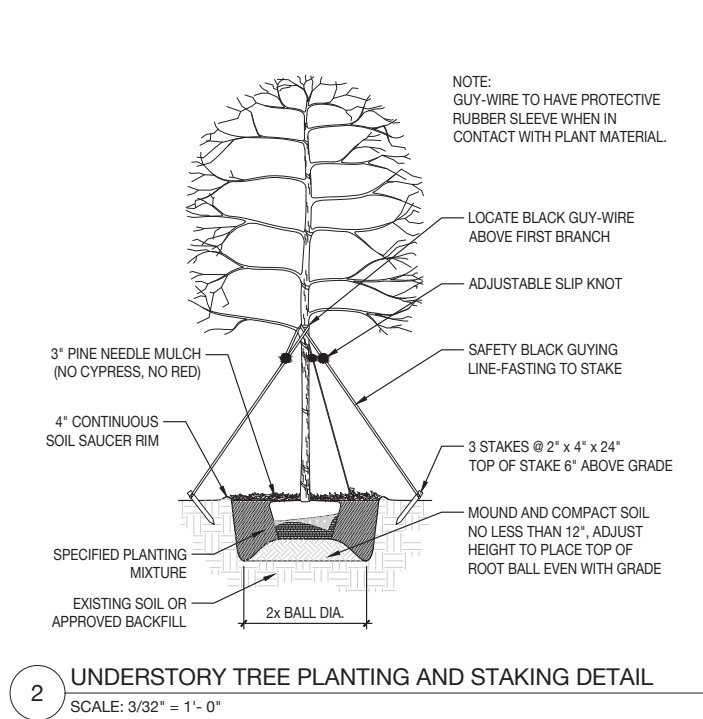
DATE	ISSUE
01.28.2022	COORDINATION
02.10.2022	DRB SUBMITTAL
03.01.2022	REVISION 1



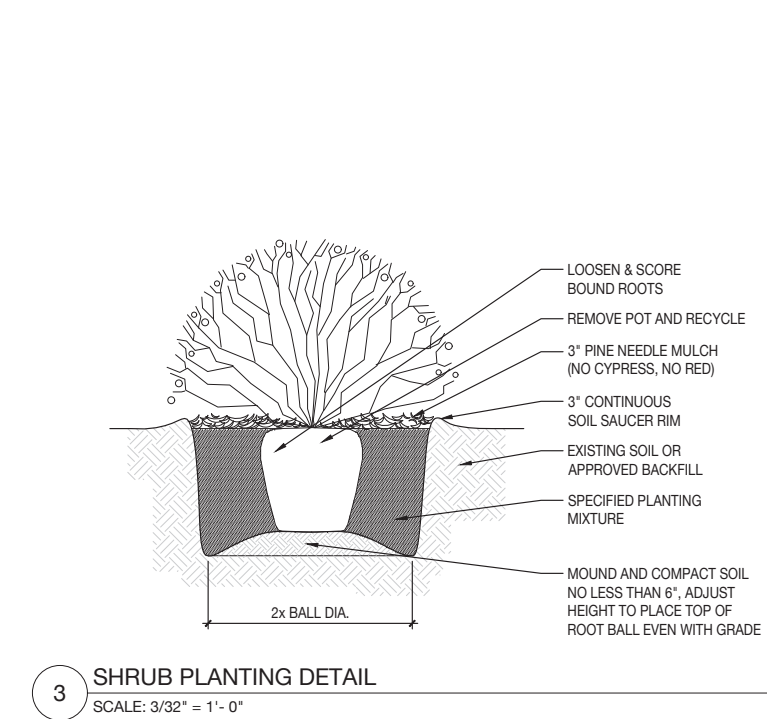
L705



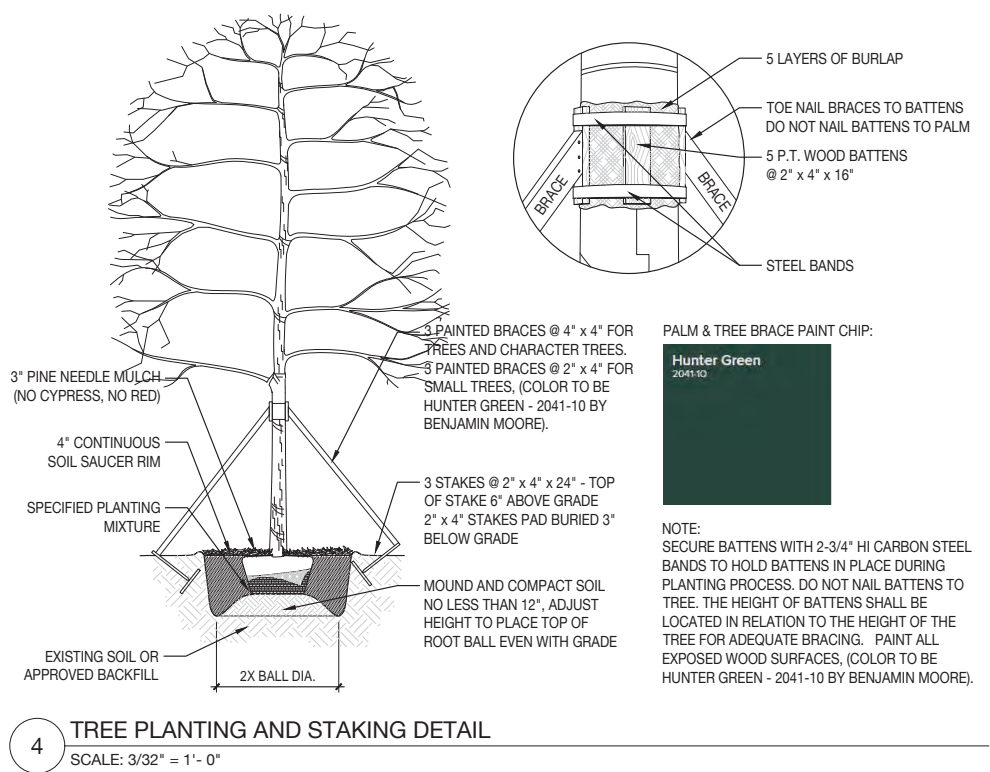
1 PALM PLANTING AND STAKING DETAIL
SCALE: 3/32" = 1'- 0"



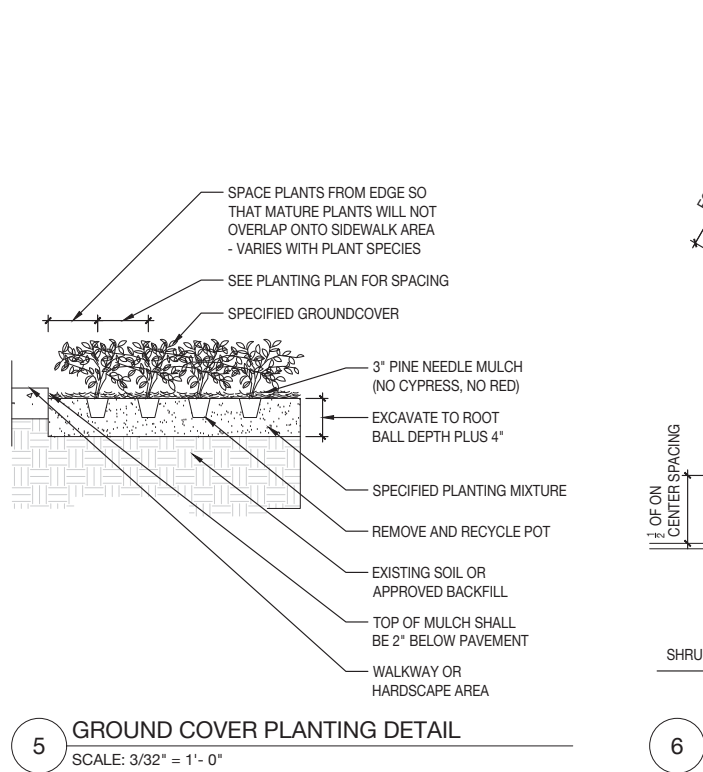
2 UNDERSTORY TREE PLANTING AND STAKING DETAIL
SCALE: 3/32" = 1'- 0"



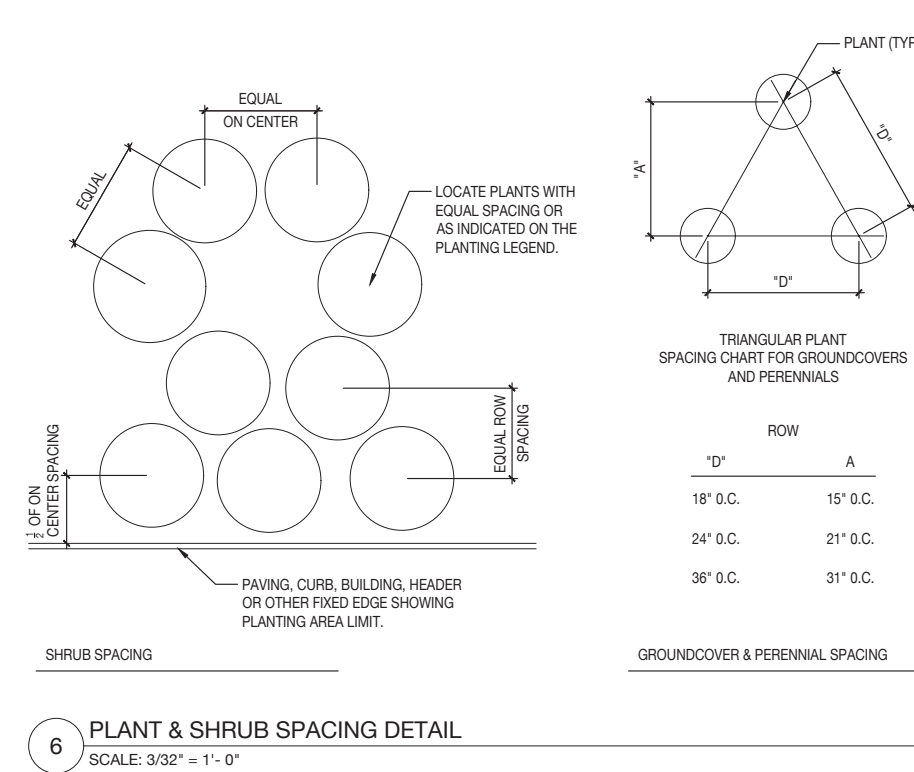
3 SHRUB PLANTING DETAIL
SCALE: 3/32" = 1'- 0"



4 TREE PLANTING AND STAKING DETAIL
SCALE: 3/32" = 1'- 0"



5 GROUND COVER PLANTING DETAIL
SCALE: 3/32" = 1'- 0"



6 PLANT & SHRUB SPACING DETAIL
SCALE: 3/32" = 1'- 0"