

GENERAL ELECTRICAL NOTES:

1. SITE INVESTIGATION: PRIOR TO BIDDING THE CONTRACTOR SHALL VISIT THE JOBSITE AND BECOME ACQUAINTED WITH ALL OF THE EXISTING CONDITIONS WHICH WILL AFFECT HIS WORK. FAILURE TO DO SO WILL NOT BE ACCEPTED AS A REASON FOR REQUESTING EXTRA PAY WHERE THE EXISTING CONDITION RESULTS IN EXTRA MATERIAL OR LABOR. THE CONTRACTOR SHALL SUBMIT IN HIS BID AN AMOUNT THAT WOULD BE SET ASIDE FOR UNIDENTIFIED ITEMS.

2. ALL WORK SHALL BE PERFORMED BY A LICENSED CONTRACTOR IN A FIRST CLASS MANNER AND SHALL BE A COMPLETED AND FULLY OPERATIVE TO THE ACCEPTANCE OF THE OWNER, GENERAL CONTRACTOR, AND ENGINEER.

3. THE CONTRACTOR SHALL FURNISH ALL LABOR, MATERIALS AND EQUIPMENT NECESSARY FOR THE COMPLETE INSTALLATION OF THE ELECTRICAL SYSTEMS, ALL IN ACCORDANCE WITH THESE CONSTRUCTION DOCUMENTS. ALL WORK PERFORMED UNDER THIS CONTRACT SHALL COMPLY WITH THE FLORIDA BUILDING CODE (2017) FLORIDA FIRE PREVENTION CODE (2014) AND NFPA CODES INCLUDING, BUT NOT LIMITED TO NFPA 70 - (2014 NEC), NFPA 72 (2013) - (FIRE ALARM).

4. THIS CONTRACTOR SHALL PAY FOR ALL FEES, INSPECTIONS, TESTS, FINES, ETC., AS REQUIRED.

5. MINIMUM STANDARDS: THE MATERIAL, EQUIPMENT, INSTALLATION, AND WORKMANSHIP FURNISHED UNDER THIS SECTION SHALL CONFORM AT LEAST TO THE REQUIREMENTS OF THE REGULATING AGENCIES AS LISTED ABOVE.

6. RESPONSIBILITIES: CONTRACTOR SHALL BE RESPONSIBLE TO PROVIDE A COMPLETE OPERATIONAL ELECTRICAL SYSTEM INCLUDING ALL REQUIRED WIRING, RACEWAYS, CONNECTIONS, ETC. INCLUDING COORDINATION WITH OTHER TRADES.

7. GUARANTEE: THE CONTRACTOR SHALL FURNISH A WRITTEN GUARANTEE THAT ALL WORK EXECUTED UNDER THIS CONTRACT SHALL BE FREE FROM DEFECTS OF WORKMANSHIP AND MATERIALS FOR A PERIOD OF ONE YEAR FROM THE DATE OF FINAL ACCEPTANCE AND THAT HE, AT HIS OWN EXPENSE, WILL REPAIR OR REPLACE ALL WORK WHICH BECOMES DEFECTIVE DURING THE TIME OF THE GUARANTEE.

8. ALL EQUIPMENT, SYSTEMS AND SYSTEM COMPONENTS SHALL BE FROM THE SAME MANUFACTURER AND SHALL BE INSTALLED IN ACCORDANCE WITH THE MANUFACTURERS RECOMMENDATIONS AND SPECIFICATIONS.

9. OBTAIN FULL INFORMATION REGARDING RESTRICTIONS AND LIMITATIONS OF SPACE AVAILABLE FOR INSTALLATION OF THE EQUIPMENT AND MATERIALS UNDER CONTRACT, AND PROVIDE READY ACCESSIBILITY TO ELECTRICAL EQUIPMENT, INCLUDING ANY PART OF SYSTEM REQUIRED TO BE REACHED FOR MAINTENANCE AND OPERATION.

10. PROVIDE ACCURATE LAYOUT, GRADES AND ELEVATIONS, TAKE PROPER PRECAUTIONS TO PROTECT WORK AND EQUIPMENT FROM DAMAGE.

11. PROVIDE CODE APPROVED FIRE STOPPING AT ALL CONDUIT PENETRATIONS THROUGHOUT BUILDING CONSTRUCTION TO MAINTAIN FIRE SMOKE AND SOUND RATING, FIRE SEAL ALL PENETRATIONS, SEAL TELECOMMUNICATION SLEEVES AFTER CABLES HAVE BEEN INSTALLED.

12. RACEWAYS AND FITTINGS: CONDUIT RUNS SHALL BE CONCEALED IN CEILING SPACES AND WALL PARTITIONS, NO CONDUIT SHALL BE EXPOSED IN INTERIOR SPACES, CONCEALED CONDUITS ARE TO BE EMT.

13. THIS CONTRACTOR SHALL BE RESPONSIBLE FOR COORDINATION WITH ALL OTHER TRADES AS WELL AS PROVIDING TEMPORARY POWER AS REQUIRED FOR THE PROJECT.

14. VERIFY EQUIPMENT SIZES, VOLTAGE AND CURRENT CHARACTERISTICS, ETC., BEFORE THE ORDERING OF ANY EQUIPMENT AND PRIOR TO ROUGHING-IN FOR EQUIPMENT SUPPLIED BY OTHERS, NOTIFY ENGINEER OF ANY CONFLICT.

15. PROVIDE COMPLETE POWER CIRCUIT WIRING AND CONNECTIONS FOR EACH AND EVERY ITEM OF PERMANENT MECHANICAL EQUIPMENT. PRIOR TO ANY ROUGH-IN, VERIFY HVAC AND PLUMBING EQUIPMENT NAME PLATES TO OBTAIN CORRECT WIRE SIZE AND OVER CURRENT PROTECTION RATINGS. IF THE NAME PLATE REQUIRES THE OVER CURRENT PROTECTION DEVICE TO BE FUSES, PROVIDE A FUSED SWITCH WITH PROPER SIZE FUSES AT THE EQUIPMENT LOCATION.

16. CONDUCTOR: ALL WIRES AND CABLES SHALL CONSIST OF 98% CONDUCTIVE COPPER. ALL CABLES SHALL BE SINGLE CONDUCTOR, 600 VOLT, THERMOPLASTIC INSULATION, SUITABLE FOR CONTINUOUS OPERATION AT 75 DEGREES C. TEMPERATURE IN BOTH WET AND DRY LOCATIONS. THESE CABLES SHALL BE NEC INSULATION TYPE THANTHAN MINIMUM SIZE SHALL BE #2. ALL CONDUITOR INSULATION SHALL BE COLOR CODED, COLORED INSULATION SHALL BE USED FOR AWG SIZES #6 AND SMALLER, ALL POWER AND CONTROL CIRCUITS SHALL CARRY EQUIPMENT GROUNDING CONDUCTOR SIZE PER NEC 250-122.

17. THE NATURE OF THIS TYPE OF CONSTRUCTION POSES SPECIAL PROBLEMS FOR THE DESIGN ENGINEER AS WELL AS THE CONTRACTOR. EVERY EFFORT HAS BEEN MADE BY THE ENGINEER TO SHOW AND VERIFY WHERE POSSIBLE, THE LOCATION OF THE EXISTING ELECTRICAL SYSTEMS. THE MAJOR PORTION OF THE ELECTRICAL SYSTEMS ARE AS SHOWN ON THE DRAWINGS. HOWEVER, MINOR DEVIATIONS MAY BECOME EVIDENT AS THE JOB PROGRESSES. NO ADVANTAGE IS TO BE TAKEN BY THE CONTRACTOR BECAUSE OF THESE MINOR DIFFERENCES.

18. CORRECTION OF ANY DEFECTS, REPAIRS OR DAMAGE DURING CONSTRUCTION AS WELL AS ANY MINOR CHANGES IN OUTLET LOCATIONS SHALL BE MADE WITHOUT ADDITIONAL COST TO THE OWNER.

19. GUTTERS, PULL BOXES, ETC., SHALL BE GALVANIZED STEEL SIZED PER NATIONAL ELECTRICAL CODE, ARTICLE 312 AND SUITABLE FOR THE ENVIRONMENTAL CONDITIONS PRESENT.

20. ALL FLOORS, WALLS AND ROOF PENETRATIONS SHALL BE PROPERLY SEALED-OFF, IF FIRE RATED, AN APPROVED FIRE RETARDANT SEALANT SHALL BE USED.

21. ALL WIRING SHALL BE INSTALLED IN RACEWAYS.

A. OUTDOORS - USE THE FOLLOWING:

• EXPOSED: RIGID GALVANIZED STEEL CONDUIT OR INTERMEDIATE METALLIC CONDUIT.

• UNDERGROUND: SCHEDULE 40 PVC.

22. BOXES AND ENCLOSURES

A. OUTDOORS - USE THE FOLLOWING:

• NEMA 3R - MALLEABLE IRON OR STEEL

• NEMA 4X - STAINLESS STEEL FOR WET OR CORROSIVE ENVIRONMENTS

23. THESE DRAWINGS ARE A GUIDE FOR THE INSTALLATION OF THE RACEWAY SYSTEM AND EQUIPMENT. THEY ARE INTENDED TO SHOW THE GENERAL ARRANGEMENT, DESIGN AND EXTENT OF THE WORK AND ARE PARTLY DIAGRAMMATIC. THE CONTRACTOR IS RESPONSIBLE FOR PROVIDING A COMPLETE AND OPERATIONAL INSTALLATION.

24. CIRCUIT NUMBERS ARE FOR IDENTIFICATION PURPOSES ONLY. THE CONTRACTOR IS RESPONSIBLE FOR CORRECTLY PHASING THE CIRCUITS IN THE PANEL AND SHALL BALANCE THE LOAD ON THE PHASES UNDER NORMAL OPERATING CONDITIONS. PROVIDE TYPE WRITTEN PANEL BOARD DIRECTORIES IN EXISTING PANEL BOARDS AFFECTED BY THIS PROJECT ELECTRONICALLY TRACING ALL CIRCUITS.

25. ANY DEVIATION FROM THESE DRAWINGS AND SPECIFICATIONS MUST BE AUTHORIZED IN WRITING BY THE ENGINEER PRIOR TO MAKING ANY CHANGES. THE CONTRACTOR SHALL BE HELD LIABLE FOR ANY DEVIATIONS WITHOUT SUCH AUTHORIZATION.

26. ALL POWER AND LIGHTING CIRCUITS SHALL HAVE A GREEN EQUIPMENT GROUNDING CONDUCTOR SIZED AS PER NEC 250-122.

27. PROVIDE NYLON PULL STRINGS IN ALL EMPTY CONDUITS FOR FUTURE USE.

28. COLOR CODING FOR CONDUCTORS:

A. WIRING FOR 120/208 VOLT SYSTEM SHALL BE CODED AS FOLLOWS:

PHASE A - BLACK

PHASE B - RED

PHASE C - BLUE

NEUTRAL - WHITE

GROUND - GREEN

B. WIRING FOR 120/240 VOLT SYSTEM SHALL BE AS FOLLOWS:

PHASE A - BLACK

PHASE B - ORANGE (HIGH LEG)

PHASE C - RED

NEUTRAL - WHITE

GROUND - GREEN

C. WIRING FOR 277/480 VOLT SYSTEM SHALL BE CODED AS FOLLOWS:

PHASE A - BROWN

PHASE B - ORANGE

PHASE C - YELLOW

NEUTRAL - GRAY

GROUND - GREEN

29. ANY WORK NOT SHOWN OR SPECIFICALLY MENTIONED ON THESE PLANS BUT CONSIDERED NECESSARY FOR COMPLETION OF WORK IN THE PROPER MANNER SHALL BE PROVIDED BY THE CONTRACTOR WITHOUT ADDITIONAL CHARGE TO THE OWNER.

30. CONTRACTOR SHALL VERIFY SPACE CONDITIONS AND DIMENSIONS AT JOB SITE PRIOR TO FABRICATION AND INSTALLATION OF MATERIALS AND EQUIPMENT.

31. ALL ELECTRICAL EQUIPMENT SUCH AS PANELS, PULL AND JUNCTION BOXES, FEEDERS, ETC. SHALL BE PROPERLY IDENTIFIED WITH A PERMANENT LABEL AFFIXED TO THE EQUIPMENT. IDENTIFY CIRCUITS IN PANELS BY MEANS OF A TYPED, PLASTIC COVERED DIRECTORY.

32. SPOT PAINT CONDUITS AND BOXES, IDENTIFY CONDUITS WITHIN 6 INCHES (6") OF BOX OR ENCLOSURE. USE COLOR CODE PER OWNER'S REQUIREMENTS/STANDARDS.

33. ALL SERVICE INTERRUPTIONS AND ALL REMOVAL AND DISPOSAL WORK SHALL BE SCHEDULED AND COORDINATED WITH THE AUTHORIZED OWNER REPRESENTATIVE.

34. CONTRACTOR SHALL SECURE AND PAY FOR ALL PERMITS, FEES, TAXES, INSPECTIONS, TESTS AND OTHER ITEMS INCLUDING REQUIRED INSURANCE FOR PROTECTION AGAINST PUBLIC LIABILITY AND PROPERTY DAMAGE FOR THE DURATION OF THE WORK.

35. CONTRACTOR SHALL MAINTAIN A COMPLETE SET OF PRINTS FOR INDICATING ALL CHANGES AS WORK PROGRESSES. AT THE COMPLETION OF THE WORK, THE CONTRACTOR SHALL DELIVER A SET OF AS-BUILT DRAWINGS TO THE OWNER IN REPRODUCIBLE FORM. CONTRACTOR SHALL STAMP AS-BUILT ON EACH DRAWING AND INCLUDE SIGNATURE AND DATE.

36. CONTRACTOR IS RESPONSIBLE FOR REPLACING SURFACES, WALLS, CEILINGS, FLOORS, PARTITIONS, PAVEMENT, ETC. AFFECTED BY THE IMPLEMENTATION OF WORK SHOWN ON THESE DRAWINGS. UPON COMPLETION OF WORK, RESTORE ALL AFFECTED SURFACES MATCHING SURROUNDING SURFACE.

37. TELECOM RACEWAYS, EMPTY BOXES AND PULL STRINGS TO BE INSTALLED BY CONTRACTOR. WIRING AND WIRING DEVICES AND FINAL CONNECTION IS TO BE BY INSTALLED BY OWNER'S CONTRACTOR UNDER SEPARATE PERMIT.

38. ELECTRICAL EQUIPMENT TO BE PROVIDED WITH A WARNING LABEL FOR ARC FLASH HAZARDS IN COMPLIANCE WITH NEC 110.16.

39. PROJECT TO COMPLY WITH THE REQUIREMENTS OF THE CURRENT EDITION OF NFPA 241 "STANDARDS FOR SAFE GUARDING CONSTRUCTION, ALTERATION AND DEMOLITION OPERATIONS."

40. CONTRACTOR SHALL PROVIDE THE REQUIRED MEASURES FOR THE SAFEGUARDING OF THE EXISTING FACILITY AND SYSTEMS THEREIN DURING THE PERFORMANCE OF THE WORK SHOWN ON THESE DRAWINGS PER NFPA 241.

41. CONTRACTOR SHALL RETURN SURFACE CONDITIONS (GRASS, SIDEWALKS, PAVING) TO LIKE NEW CONDITION AFTER INSTALLATION OF WORK.

42. THE CONTRACTOR SHALL COMPLY WITH ALL APPLICABLE FEDERAL, STATE AND LOCAL CODES APPLICABLE TO THIS PROJECT, INCLUDING BUT NOT LIMITED TO FLORIDA BUILDING CODE AND HEALTH AND SAFETY CODES.

A. ALL CONSTRUCTION SHALL BE ACCOMPLISHED IN A SAFE MANNER AND STRICT COMPLIANCE WITH ALL THE REQUIREMENTS OF THE FEDERAL, OCCUPATIONAL SAFETY AND HEALTH AND ALL STATE AND LOCAL SAFETY AND HEALTH REGULATION.

B. UPON THE RECEIPT OF THE "NOTICE TO PROCEED", THE CONTRACTOR SHALL CONTACT THE ENGINEER OF RECORD AND ARRANGE A PRE-CONSTRUCTION MEETING TO INCLUDE ALL INVOLVED GOVERNMENTAL AGENCIES, UTILITY OWNERS, THE CITY OF MIAMI REPRESENTATIVE AND THE ENGINEER OF RECORD.

C. THE CONTRACTOR SHALL OBTAIN A SUNSHINE STATE ONE CALL OF FLORIDA, INC. CERTIFICATION NUMBER AND FIELD MARKINGS AT LEAST 48 HOURS PRIOR TO BEGINNING AND EXCAVATION. CALL 800-432-4710

D. THE CONTRACTOR SHALL BE RESPONSIBLE FOR VISITING THE SITE PRIOR TO BIDDING AND FAMILIARIZING ITSELF WITH ALL EXISTING CONDITIONS AFFECTING THE WORK, INCLUDING BUT NOT LIMITED TO, UTILITIES AND OTHER SUPPORT FACILITIES.

E. THE CONTRACTOR SHALL BE RESPONSIBLE FOR INCLUDING IN ITS BID, WORK MATERIAL COSTS FOR ANY CHANGES OR ALTERATIONS OF ADJACENT AREAS TO BE DISTURBED DURING CONSTRUCTION. THIS INCLUDES ANY AREA DAMAGED BECAUSE OF STAGING, DUMPSTER, AND SODDING DISTURBED BY CONSTRUCTION ACTIVITY.
- ELECTRICAL SYMBOL LEGEND
- BOXES & FITTINGS
- 

CEILING MOUNTED JUNCTION BOX



WALL MOUNTED JUNCTION BOX , 18" AFF. OR AS OTHERWISE NOTED.



CEILING MOUNTED JUNCTION BOX, 12"x12"x6" DEEP MINIMUM UNLESS OTHERWISE INDICATED FOR DISTRIBUTION OF TELEPHONE/DATA SYSTEM



PULLBOX, SIZED AS INDICATED OR AS REQUIRED BY N.E.C.
- PANELBOARDS
- 

POWER, LIGHTING OR DISTRIBUTION PANELBOARD. (NEW)
- FIRE ALARM
- 

CEILING MOUNTED SMOKE DETECTOR



DUCT MOUNTED SMOKE DETECTOR



EXIT DOOR SECURITY ALARM WITH MONITOR MODULE TIED TO FIRE ALARM



CEILING MOUNTED HEAT DETECTOR



MANUAL FIRE ALARM PULL STATION, 48" AFF.



FIRE ALARM STROBE LIGHT, A.D.A. TYPE.



FIRE ALARM HORN, 4 STROBE LIGHT 80" AFF. A.D.A. TYPE.



SHUT DOWN RELAY.



FIRE ALARM PANEL



FLOW SWITCH



TAMPER SWITCH



FIRE ALARM HORN, 80" AFF.



FIRE ALARM SPEAKER 4 STROBE LIGHT 80" AFF. A.D.A. TYPE



FIRE ALARM SYSTEM SPEAKER
- WIRING
- 

INDICATES A CONDUIT RUN CONCEALED IN A CEILING OR WALL.



INDICATES A CONDUIT RUN CONCEALED IN FLOOR, EMBEDDED IN CONCRETE OR UNDERGROUND AT 24" BELOW GRADE MINIMUM.



INDICATES A CAPPED CONDUIT.



INDICATES A FLEXIBLE METAL CONDUIT CONNECTION. USE LIQUID TIGHT CONDUIT IN WET, DRY OR OILY LOCATIONS.




FLEXIBLE EQUIPMENT CONNECTION.




CONDUIT RUN TURNED DOWN.



CONDUIT RUN TURNED UP.



CONDUIT EXPANSION JOINT
- LIGHTING
- 

LIGHTING FIXTURE TYPE. SEE LTG. FIXTURE SCHEDULE THIS SHEET



RECESSED, SEMI RECESSED, SURFACE OR PENDANT MOUNTED FIXTURE ON NORMAL CIRCUIT 2 IS CIRCUIT NO. 1'S DENOTES SWITCH LEG



SURFACE OR PENDANT MOUNTED FLUORESCENT FIXTURE.



SURFACE OR PENDANT MOUNTED FLUORESCENT FIXTURE



FLUORESCENT RECESSED OR LAY-IN FIXTURE.




FLUORESCENT RECESSED OR LAY-IN FIXTURE



SURFACE MOUNTED SINGLE FACE EXIT LIGHT FIXTURE WITH ARROWS



WALL MOUNTED EXIT LIGHT FIXTURE WITH ARROWS AS INDICATED, 1'-6" AFF.



SURFACE MOUNTED DOUBLE FACE EXIT LIGHT FIXTURE WITH ARROWS AS INDICATED



WALL MOUNTED DOUBLE FACE EXIT LIGHT FIXTURE WITH ARROWS AS INDICATED, 1'-6" AFF.



SURFACE MTD. STRIP FLUORESCENT FIXTURE



SURFACE MTD. STRIP FLUORESCENT FIXTURE,



COMBINATION EXIT SIGN - EMERGENCY LIGHT



EMERGENCY LIGHT



OCCUPANCY SENSOR (CEILING MOUNTED) WITH 20 AMP RELAY



ARM MOUNTED POLE LIGHT




POST TOP MOUNTED POLE LIGHT
- SWITCHES
- 

SINGLE POLE TOGGLE SWITCH, 20A, KEY OPERATED 120/277 VAC. MOUNTED 48" AFF.



SINGLE POLE TOGGLE SWITCH, 20A, 120/277 VAC. MOUNTED 48" AFF. 1'S SWITCH LEG.



THREE-WAY AND FOUR WAY TOGGLE SWITCHES 20A, 120/277 VAC. MOUNTED 48" AFF.



MANUAL MOTOR STARTER TOGGLE SWITCH WITH OVERLOADS. 48" AFF.



SAFETY SWITCH, 3P # NO. OF POLES. 60 # SWITCH SIZE, 50 # FUSE SIZE.



OCCUPANCY TYPE WALL SWITCH
- MISCELLANEOUS
- 

TELEPHONE OUTLET



ADMINISTRATIVE TELEPHONE OUTLET, MTD. 48" AFF.



COMBINATION CLOCK SPEAKER.



TELEVISION TAP THRU OUTLET, MTD. 6'-8" AFF.



CLASSROOM CALL BACK BUTTON.



P.A. PRIVACY SWITCH.



DATA OUTLET



MOTION DETECTOR



DOOR CONTACT



PROXIMITY CARD READER



MAGNETIC DOOR LOCK



SECURITY SYSTEM KEY PAD



CEILING MOUNTED CLOSED CIRCUIT TV CAMERA



WALL MOUNTED CLOSED CIRCUIT TV CAMERA
- RECEPTACLES
- 

120V, 1 PHASE 60 HZ 20 AMP SINGLE RECEPTACLE



120V, 1 PHASE, 60 HZ, 20 AMP, DUPLEX RECEPTACLE MTD. 18" AFF.



SAME AS ABOVE EXCEPT MTD. AT 6" ABOVE COUNTER



120V, 1 PHASE, 60 HZ, 20 AMP, DUAL DUPLEX RECEPTACLE MTD. 18" AFF.



DOUBLE DUPLEX RECEPTACLES MOUNTED AS PART OF SURFACE RACEWAY



FLOOR OUTLET WITH (1) 120V, 1 PHASE 60 HZ 20 AMP DUPLEX RECEPT.



SPECIAL PURPOSE RECEPTACLE.
- MOTORS & CONTROLS
- 

MOTOR, 5 = 5 H.P. OR AS OTHERWISE INDICATED.



MOTOR MAGNETIC STARTER



VAV WITH DUCT HEATER, CONTACTOR AND SAFETY DISCONNECT.



THERMOSTAT
- MIAMI BEACH

OFFICE OF CAPITAL IMPROVEMENT PROJECTS

1701 MERIDIAN AVENUE, MIAMI BEACH, FL 33139

PROJECT: MAURICE GIBB'S MEMORIAL PARK

ADDRESS: 1700 PURDY AVENUE MIAMI BEACH, FL 33139-1424



COASTAL SYSTEMS INTERNATIONAL, INC.
4841 South Dixie Highway, Coral Gables, Florida 33146
Tel: 305-661-3000 Fax: 305-661-1114 www.CoastalSystems.com
Sales or Service Call 800
Credit, Environmental, Civil Engineering and Management



SUB-CONSULTANT Project No. - 18070
BASULITO ASSOCIATES CONSULTING ENGINEERS
14160 Biscayne Frontage Road Suite 22, Miami Lakes, FL 33016
Tel: 305-698-3388 Fax: 305-698-3389
www.basulito.com

LA OF RECORD: BM
DESIGN LA: BM
DRAWN BY: D.T.
CHECKER: C.Y.
SCALE: AS SHOWN

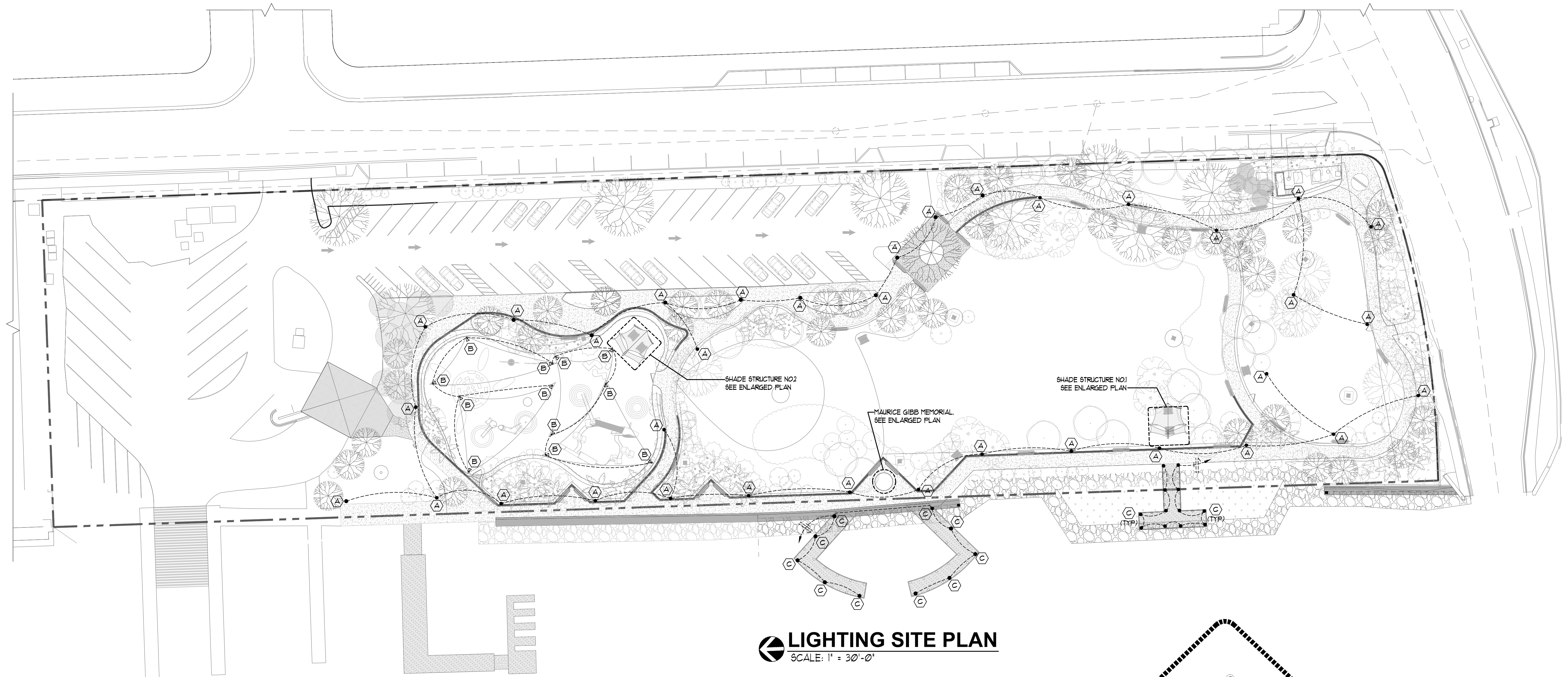
ENGINEER OF RECORD: Rene I. Basulito, P.E. PE # 40869

5									
4									
3									
2									
1	01/30/19	30% DESIGN							
NO.	DATE	REVISION						APPD. BY	

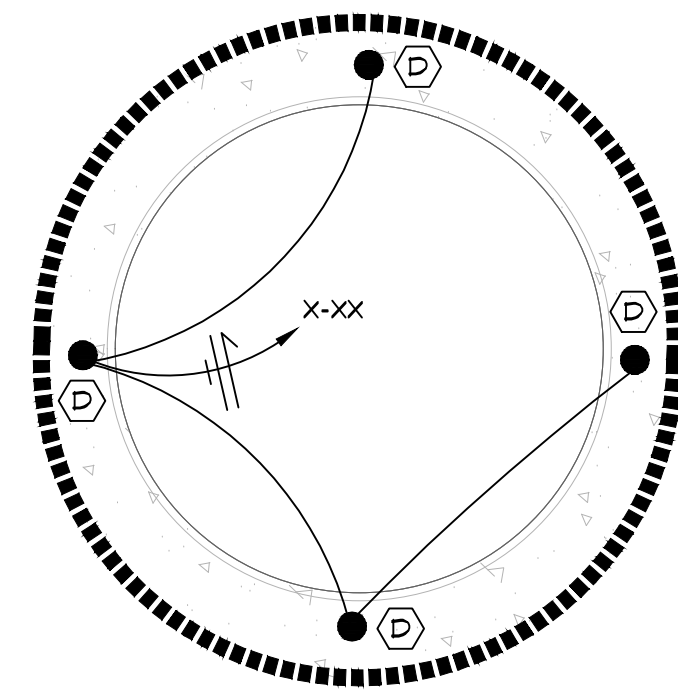
Drawing Title: GENERAL NOTES AND SYMBOL LEGEND

Filename: 18070-E-1.0-General Notes-Legend.dwg
Date: 02/11/2019
Sheet: of

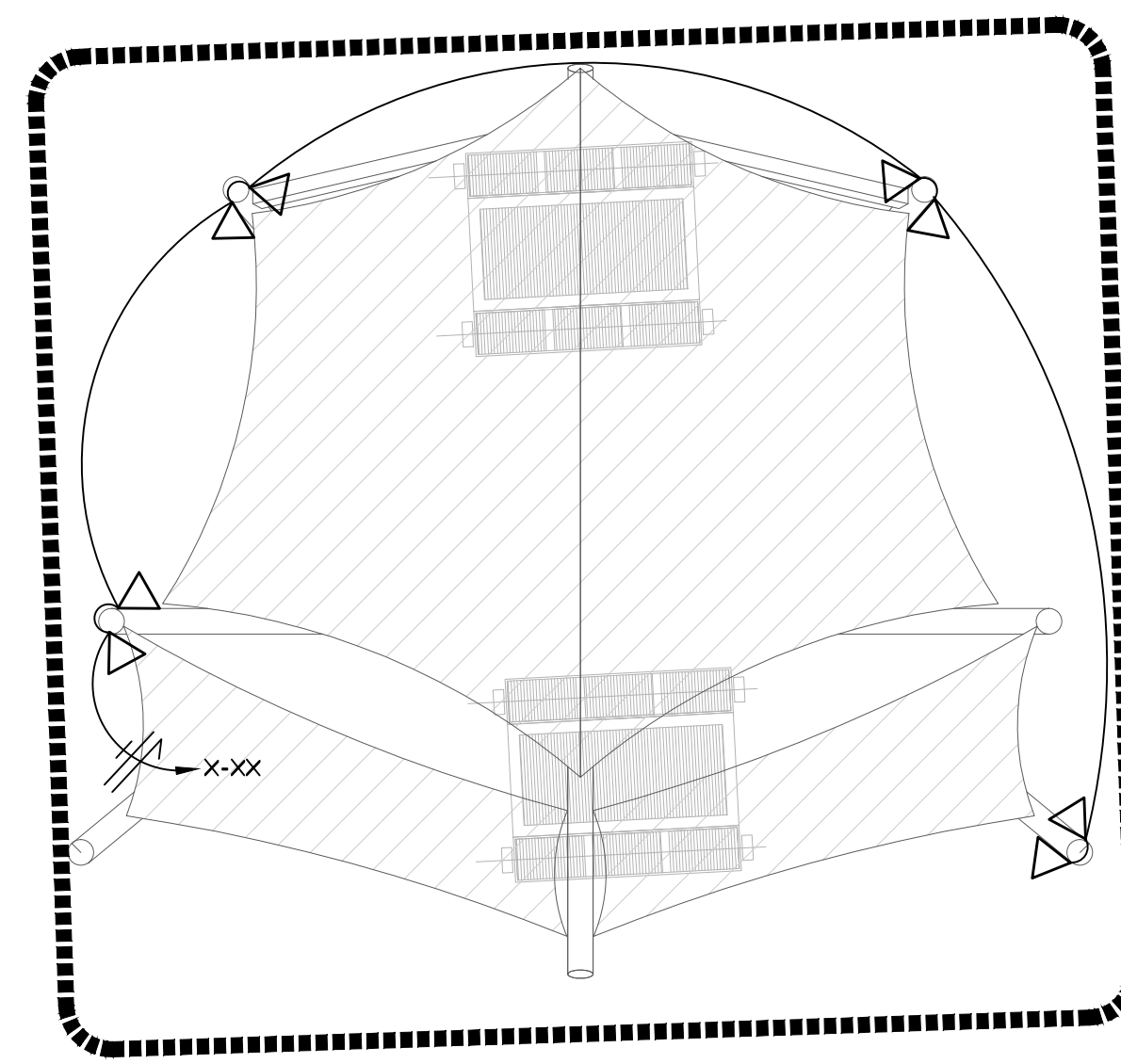
E-1.0



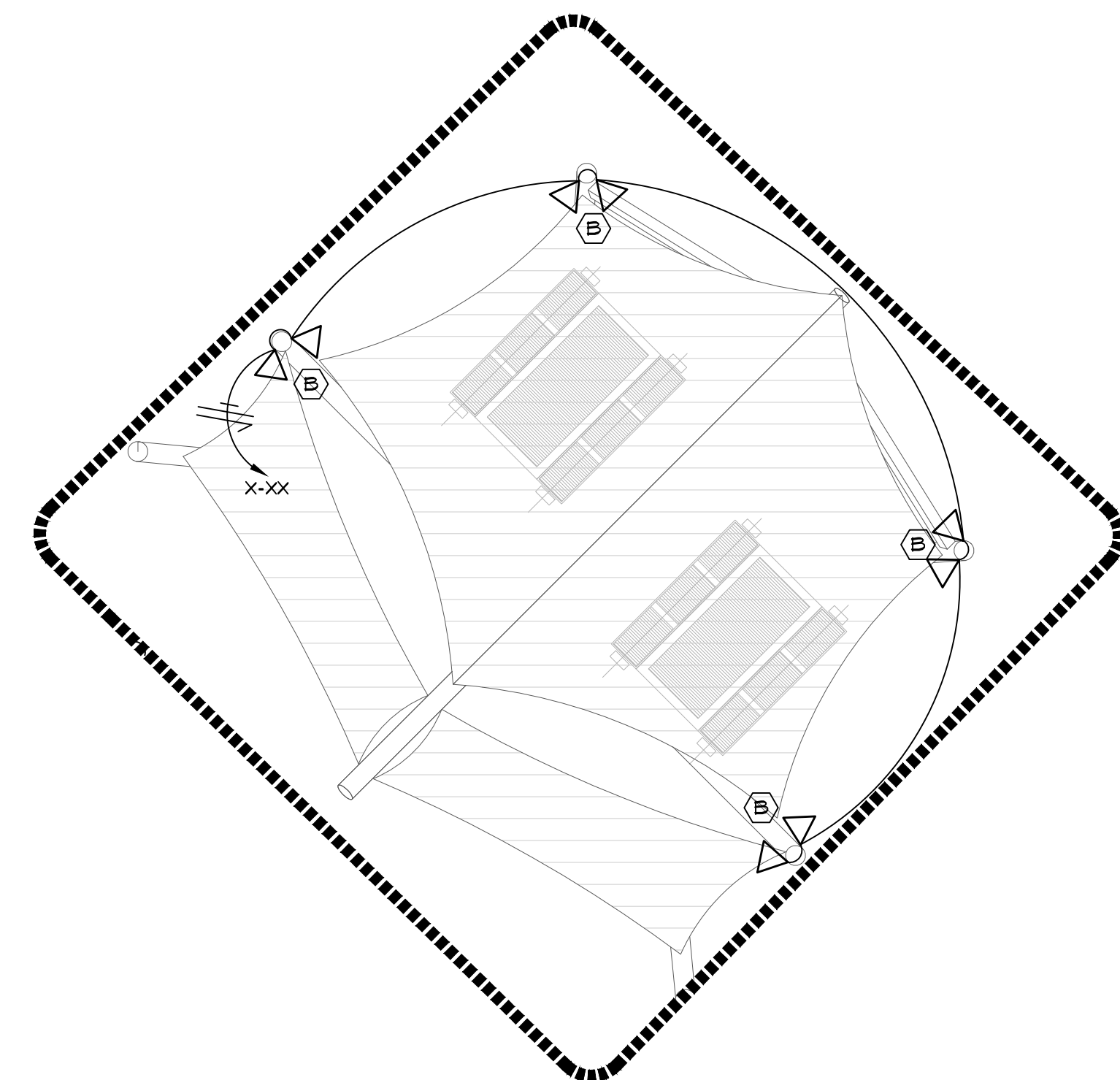
LIGHTING SITE PLAN
SCALE: 1" = 30'-0"



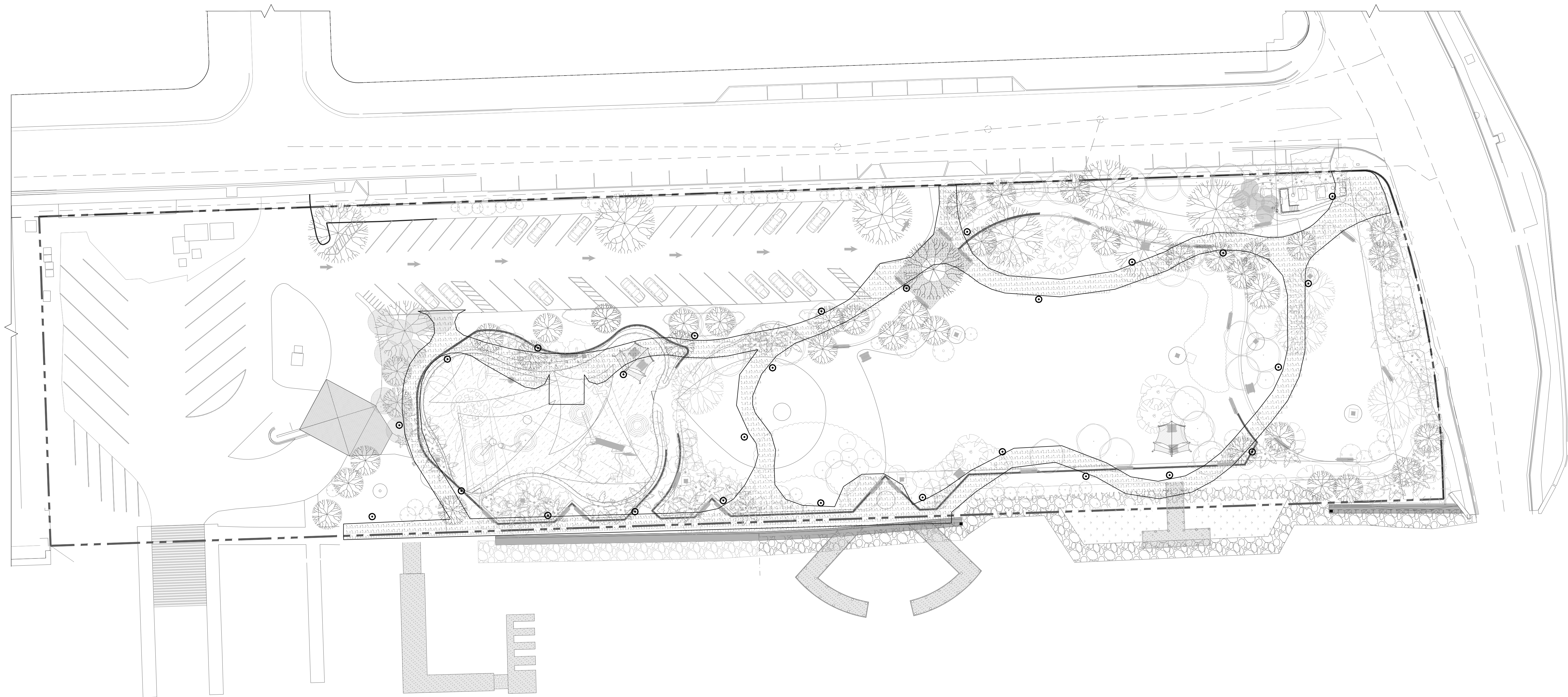
MAURICE GIBB MEMORIAL
SCALE: 1/4" = 1'-0"



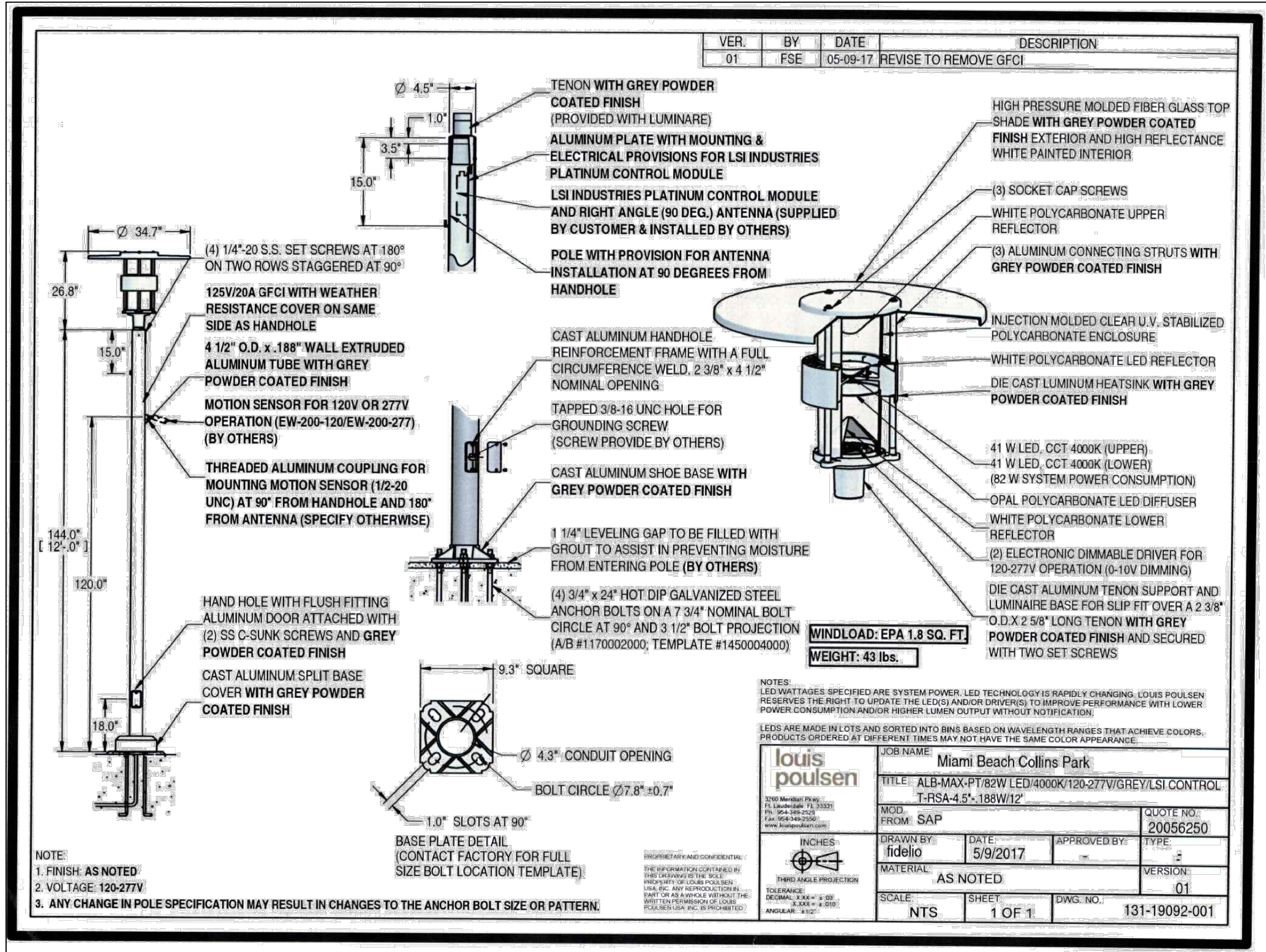
SHADE STRUCTURE NO.1
SCALE: 1/4" = 1'-0"



SHADE STRUCTURE NO.2
SCALE: 1/4" = 1'-0"



 **PHOTOMETRICS SITE PLAN**
SCALE: 1" = 30'-0"



LIGHTING FIXTURE A
NTS.

TARGETTI
DART Medium
Adjustable Professional Projector Flood Light

Concept: Small footprint adjustable LED projector.
Housing: Die-cast aluminum body and joints for maximum heat dissipation.
Materials: Die-cast aluminum housing powder coated in Ferrite Grey Color.
Optics: NSP use high efficiency LED Emitter. SP, FL, MWFL, WFL, ASYM use high efficiency LED Chip on Board. Different optical systems depending on beam angles. Equipped with lensleticular lenses for the NSP version, with a hybrid optic system for the SP and FL versions or convex faceted precision optics in high specularly anodized aluminum for the MWFL and WFL versions. ASYM version with high luminous efficiency pure aluminum reflector.
Mounting: Adjustable up to 445° on the horizontal plane and 490°/45° on the vertical plane with aim locking set screw. Can be installed directly to mounting surface.
Installation: Pre-cabled with 10' SJOOW 18-3 cable (second 18-2 direct burial cable for 0-10V dimmable version).
Finish: Ferrite Grey
Driver: Non-Dimmable or 0-10V Dimmable
Wattage: 19W (NSP), 38W (SP, FL, MWFL, WFL, or ASYM)
Color Temperature: 3000°K / 4000°K
Lumen Maintenance: (L70): 50,000hrs
Calculation for LED fixtures are based on measurements that comply with IES LM-80.
CRI: 84
Voltage: Universal Voltage 120-277V AC 50/60Hz
IK Rating: IK10
IP Rating: IP65
Certifications: cULus Wet Location Listed E488257
Tested in accordance with LM-79-08
* Title 24 commercial installation compliant.
Warranty: 5 year limited warranty.

PRODUCT CODE	DRIVER	OPTICS*	WATTAGE	COLOR TEMP
DAM - Dart Medium	ND - Non-dimmable electronic	NS - Narrow Spot 10°	L1 - 19W	30 - 3000K
	10 - 0-10V Dimming	SP - Spot 13°	L2 - 38W	40 - 4000K
		FL - Flood 33°		
		MP - Medium Wide Flood 48°		
		WF - Wide Flood 62°		
		AS - Asymmetric		

Lumens: Narrow Spot 10° = 1024lm 100lm
Spot 13° = 2344lm 2423lm
Flood 33° = 2158lm 2250lm
Medium Wide Flood 48° = 3396lm 3508lm
Wide Flood 62° = 3412lm 3524lm
Asymmetric = 2882lm 2977lm

Views: Front, Side, Top views showing dimensions: 5.30", 5.80", 5.00", 6.00", 7.50".

LIGHTING FIXTURE B
NTS.

FLINDT-B / 43.3 IN / 14W LED/3000K / 120-277V/60HZ / Nat paint alu / POST W/BASE PLATE / DIM 0-10V / 10000126945

A slim post with a cut-out to make a light opening and to create a light reflecting part. The lamps are hid in the top of the cut-out. Two horizontal connection lines underlines the three parts of the bollard. A facet increases the visibility of the connection lines. Easy mounting done by connector and because open access to terminals -- no mounting through a door.

Driver position: In the top
Top section housing driver and LEDs use quick-disconnect plug for easy servicing.
Terminal block position: In reflector section.
Looping: Approved, max. 5x6mm".
IP68 (water-tight) glands seal mid-section for pass-through wire connection.
Base plate dimension: 11" diameter. Base plate: Mounted to a concrete base with 4 anchor bolts.
Direct burial mounting with minimum 24.2" below ground depth.
In ground struts: Yes.

Light description
The fixture provides a non-glaring wide characteristic asymmetrical and functional illumination. The design of the cut-out creates a reflector part which is gradually illuminated to emphasize the depth in the fixture. The cut-out and the reflector provides an wing-shaped pattern on the ground.
A white highly reflective material around the LEDs ensures a wide light and a high efficacy.
The reflector part can be adjusted ±10° after installation for fine tuning of the light direction.
LED technology with more options of standard CCTs.
Electronic dimmable driver.

Design to Shape Light

LIGHTING FIXTURE C
NTS.

Arcluce
INGROUND260
round trim above the ground

Arcluce Code **O-IG7124US-30S**
Code Ref. **0779000D+840+30US**

TECHNICAL INFORMATION
Light source: LED, 4000K, 12W, 1800lm, CRI>80
Light efficiency: 93lm/W
Power luminaire: 15W, 1400lm
LED life time: > 50000h - L80 - B20 (Ta 25°C)
High colour consistency: < 3 SDCM
Wiring: 120-277V 60Hz 0-10V
Optic: flood 38°
Color: Stainless Steel - 30
Weight: 15.43 lb
Size: A: Ø 10" 13/16
B: 16" 3/8

IP67
IK10
11000

Appliance
- AISI 316L stainless steel body.
- Die-cast aluminum body (EN 47100).
- AISI 316L stainless steel counter-ring.
- Double layer polyester powder paint resistant to corrosion and salt spray fog.
- Silicone rubber gaskets.
- AISI 316 stainless steel external screws.
- PMMA lenses for LEDs.
- Reflector made of 99.95 anodized aluminium with satin or non-iridescent specular finishing.
- Screen made of 19/32" thermal-shock resistant tempered glass.
- 11000-13200lb static load capacity.
- Can be driven over at maximum speed 12 mph.

Installation
- Recessed installation.
- Double PG16 cable gland for through wiring.
- Supplied with recessed installation box.
- Supplied with power cable (2' 3" 9/16").
- Recessed installation box made of engineering plastic.
- FIXTURES WITH STAINLESS STEEL TRIM ARE SUGGESTED FOR WALK-OVER OR DRIVE-OVER APPLICATIONS.
- UPON REQUEST FIXTURES CAN BE SUPPLIED WITH ANTI-SLIP GLASS.

LIGHTING FIXTURE D
NTS.

