



WEST AVENUE WATER TREATMENT PARKING

PART 1

City of Miami Beach, Florida

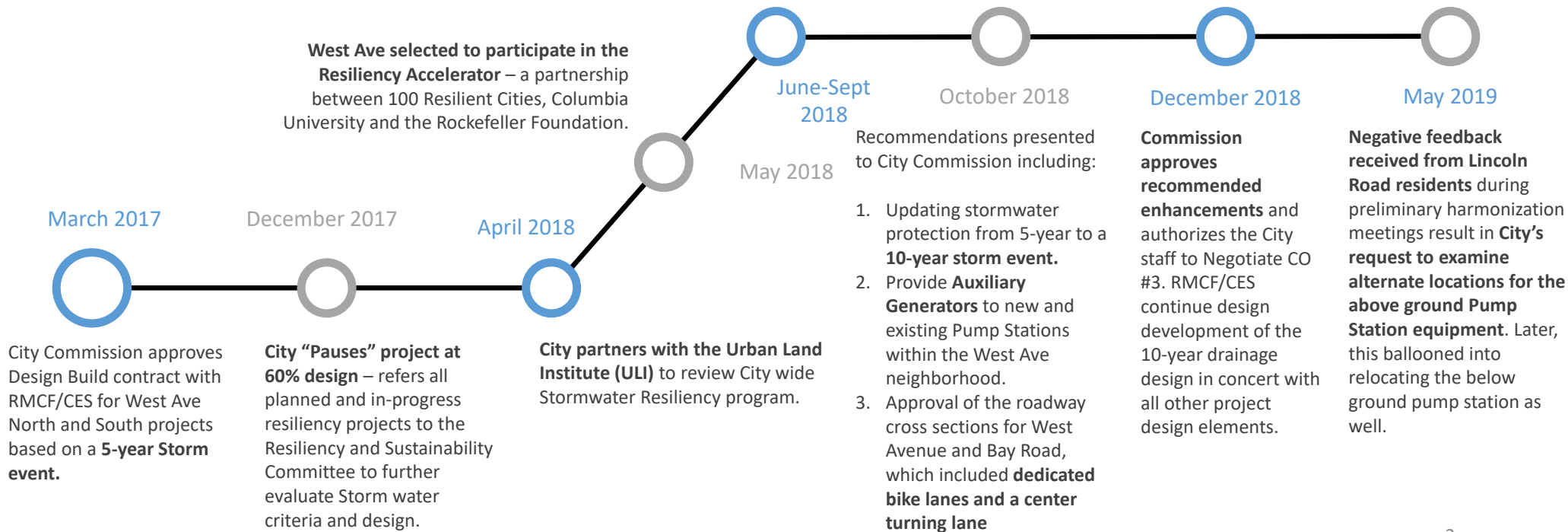
MIAMI BEACH

Presentation Discussion Point

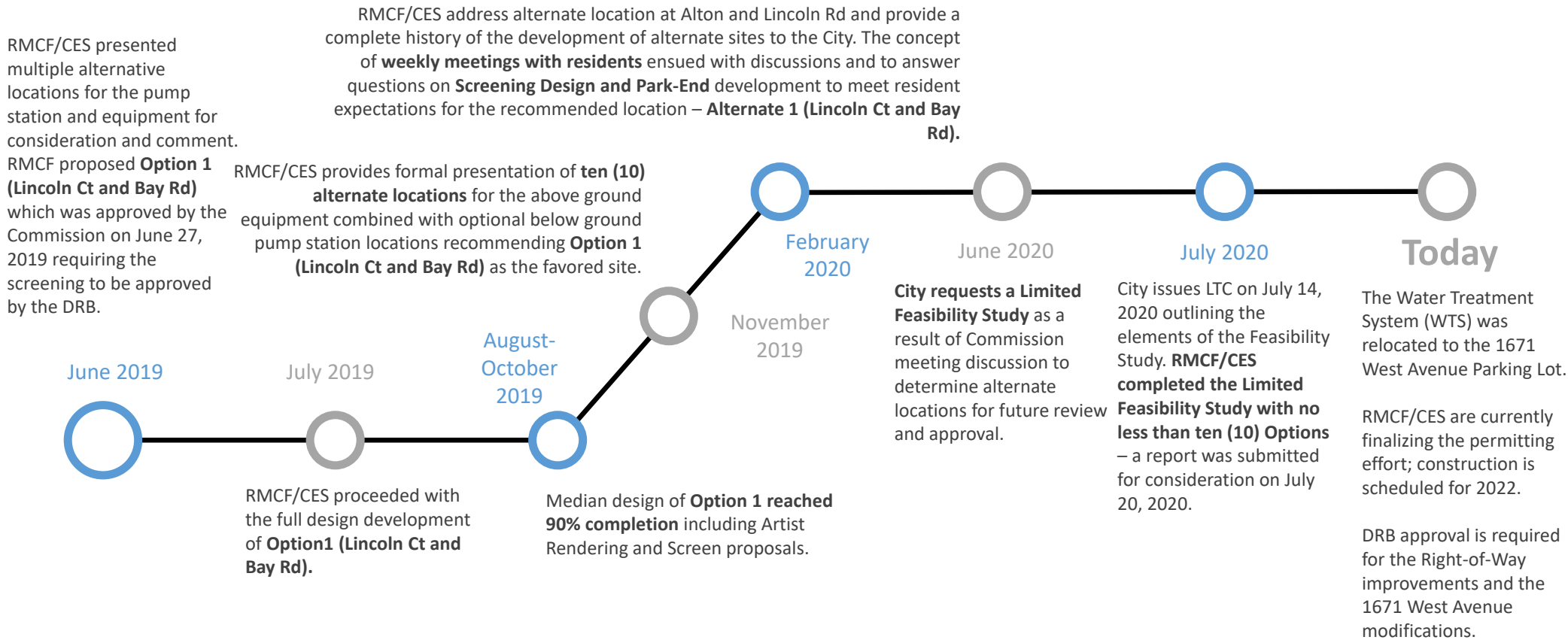
- Project History
- Project location 1671 West Avenue Existing parking lot.
- Proposed Design.
- Redesign existing parking lot adding Pump Stations, FPL Vault, generator and panels for new underground pumps.
- Materials of screen enclosure, that is – Aluminum Mangrove Root Pattern finished in Duranar XL Arcadia Silver.

West Avenue Phase II Background/History

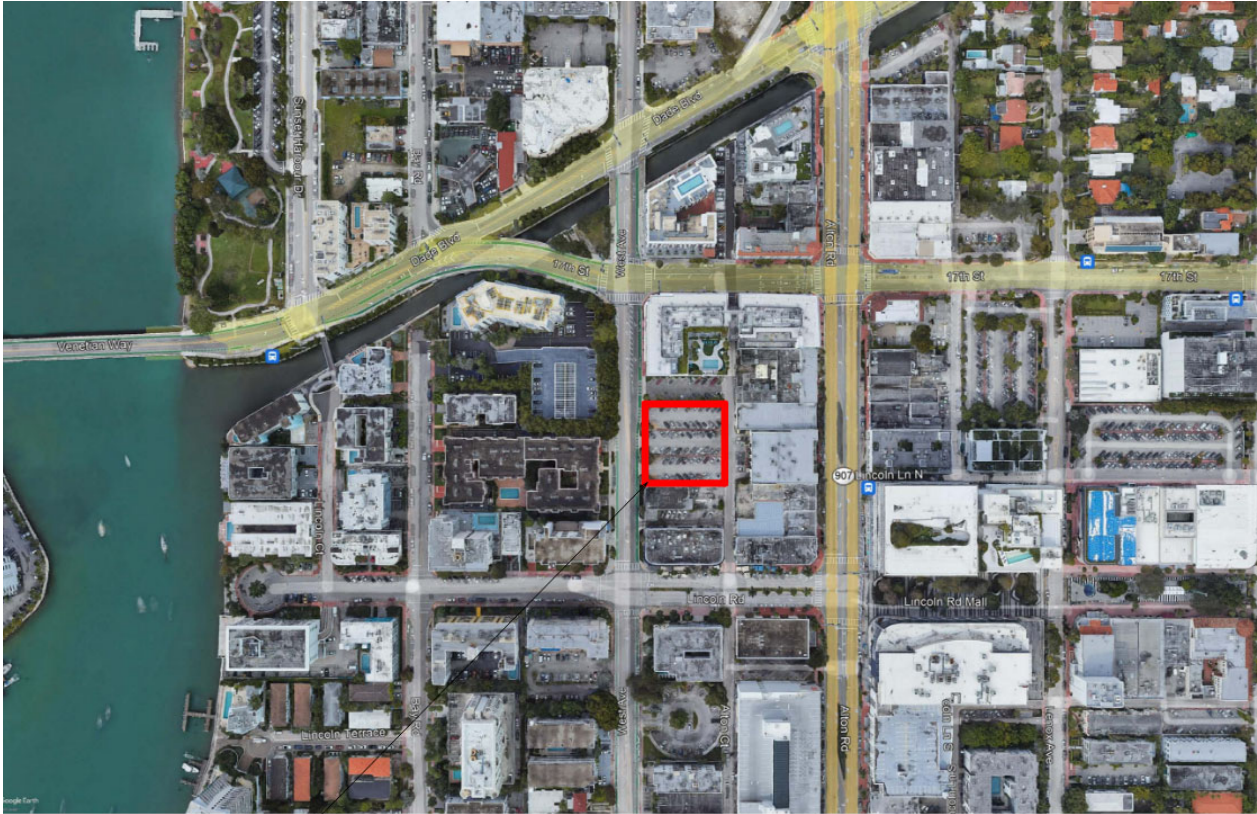
RMCF/CES participates in City staff meetings, workshops, neighborhood meetings **focusing on feedback from the community, working with ULI** experts to formulate a strategy and design concept based on current and future environmental challenges.



West Avenue Phase II Background/History



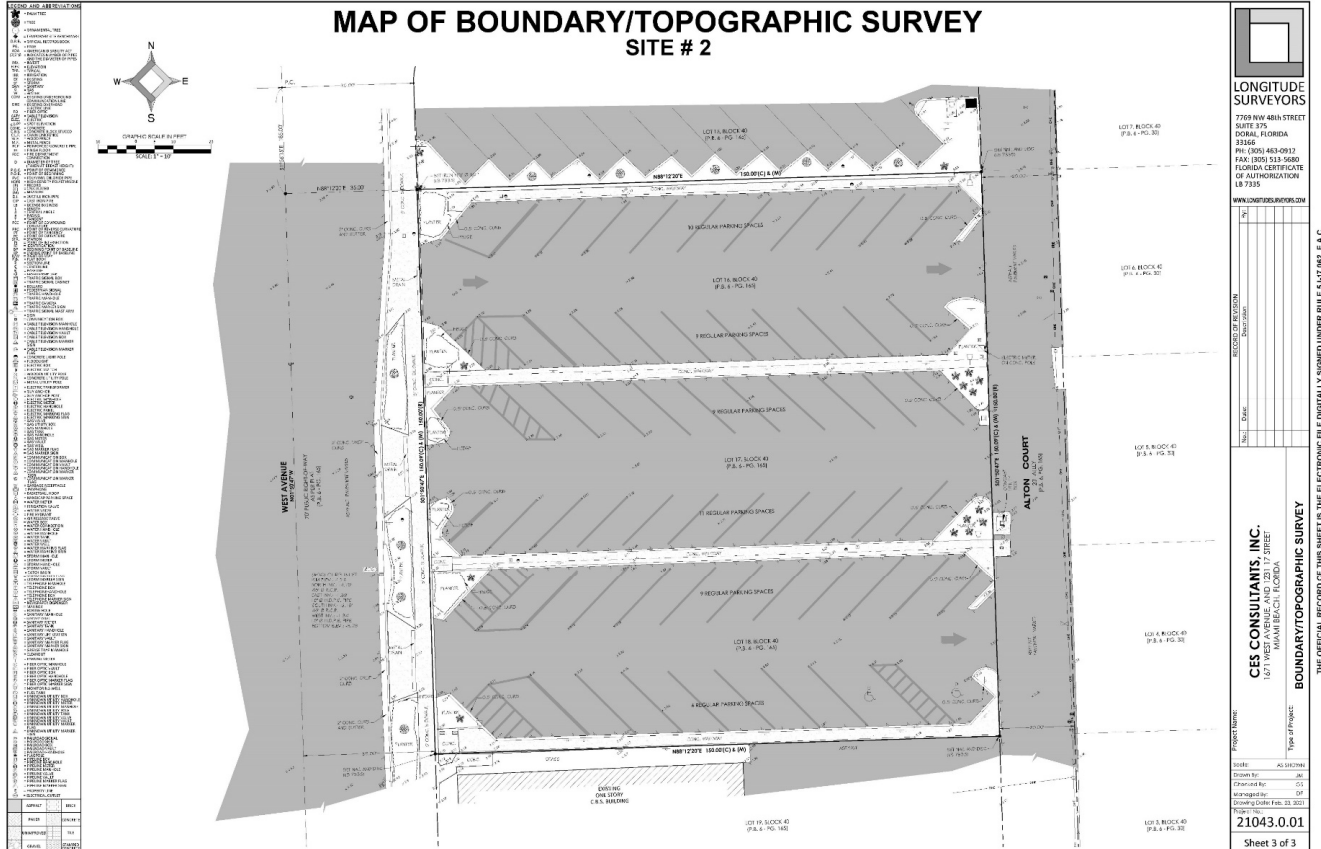
1671 West Ave
Aerial View



LOTS 16, 17 & 18 OF LOT 40
1671 West Ave, Miami Beach, FL 33139



1671 West Ave Survey



EXISTING CONDITIONS

1671 West Ave
Facing North



1671 West Ave
Facing South



1671 West Ave
Facing East



1671 West Ave
Facing West



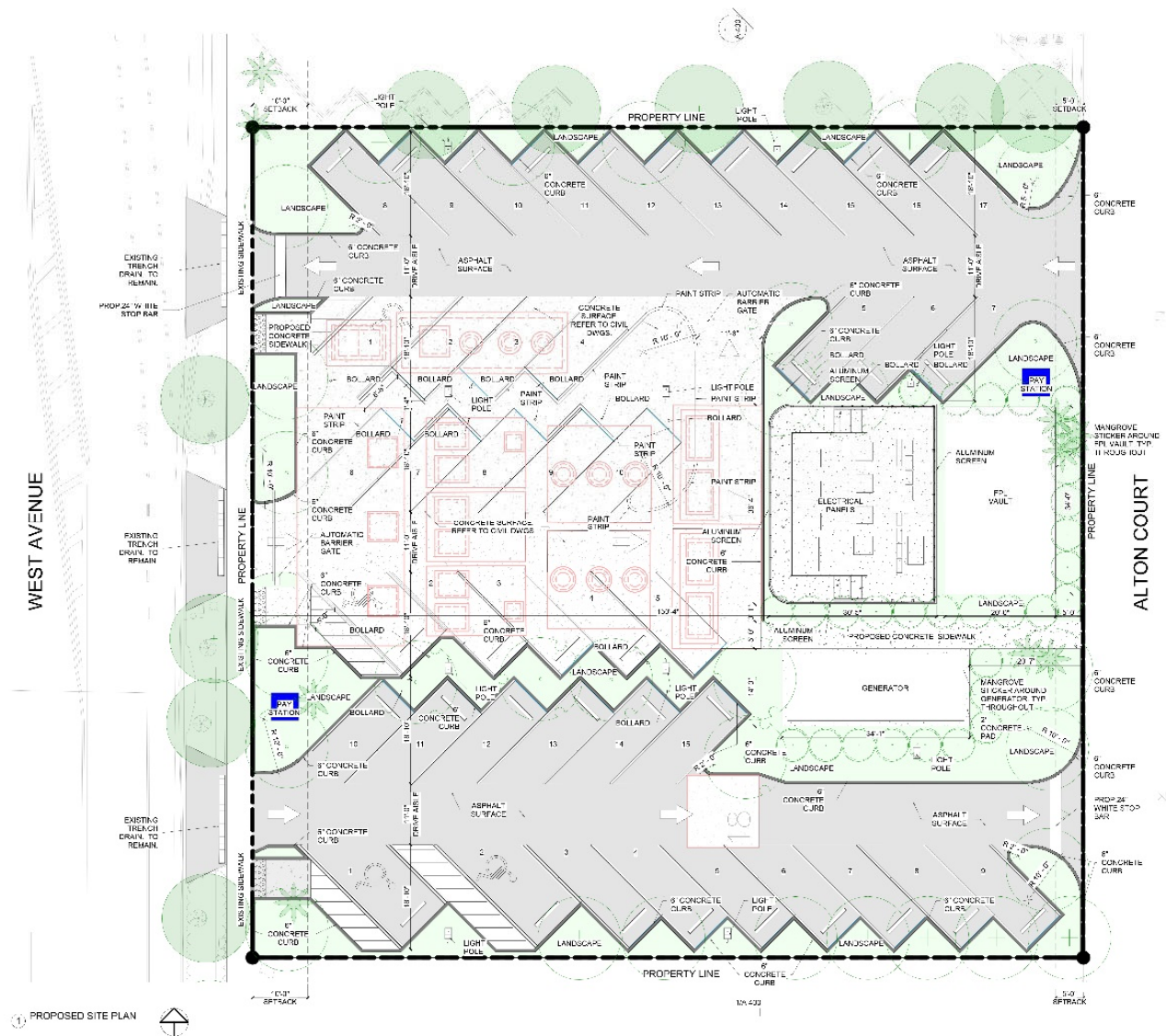
1671 West Avenue Facing West

PROPOSED DESIGN





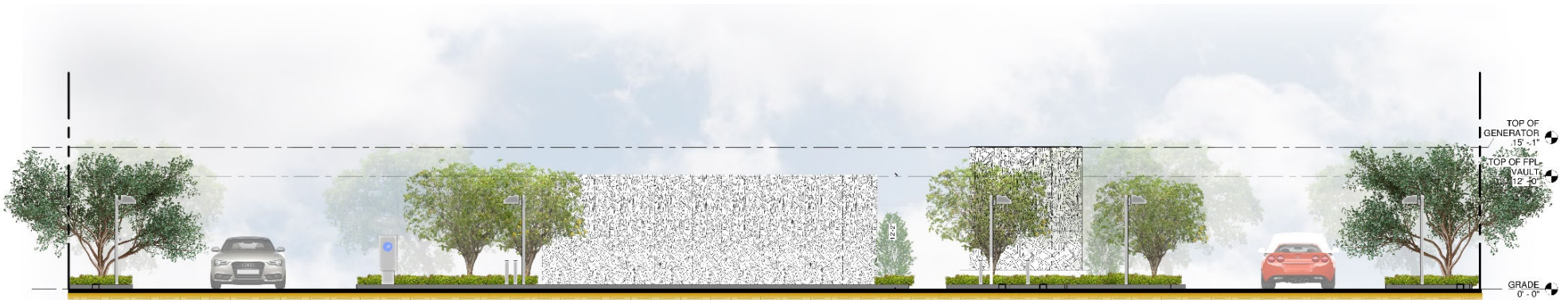
Proposed Site Plan



PARKING LEGEND

- 4 HANDICAP PARKING UNITS
- 40 TOTAL PARKING SPACES
- RED LINE DENOTES EQUIPMENT BELOW GRADE
- GREEN HATCH DENOTES LANDSCAPE
- CONCRETE SURFACE
- ASPHALT SURFACE

1 PROPOSED SITE PLAN



① SECTION LOOKING EAST



② SECTION LOOKING NORTH

Lighting Material



McGraw-Edison

GPC Galleon Pedestrian Companion

Area / Site Luminaire

Product Features



- Interactive Menu**
- Ordering Information [page 2](#)
 - Product Specifications [page 2](#)
 - Optical Configurations [page 3](#)
 - Energy and Performance Data [page 4](#)
 - Control Options [page 6](#)

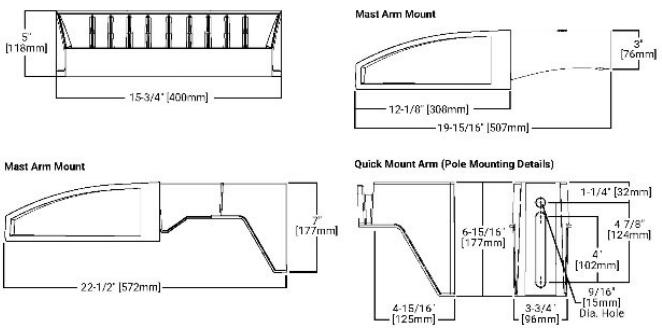
Product Certifications



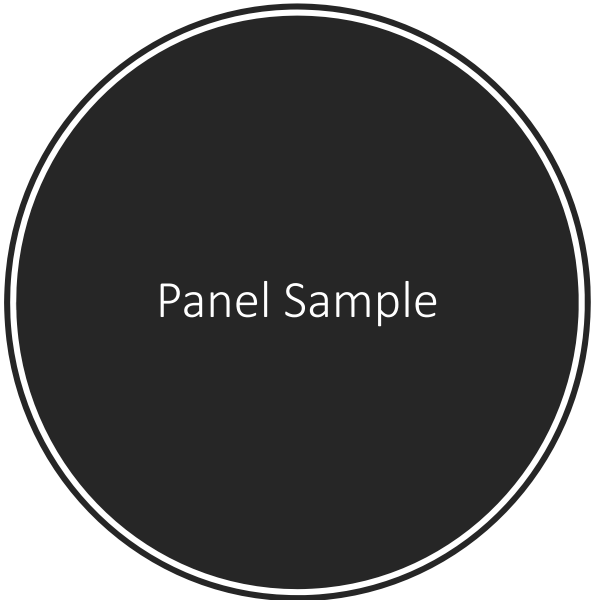
Quick Facts

- Choice of sixteen high-efficiency, patented AccuLED Optics
- Quick mount pole or mast-arm mounting configurations
- Eight lumen packages from 3,215 up to 17,056 lumens
- IP66 rated housing and LED light squares

Dimensional Details



NOTES:
1. Verify <https://www.designlights.org/specs/> to confirm arm location. Not all product variations are DLC qualified.





West Avenue Improvements - Parking Analysis

	Existing Parking	Proposed Parking	Difference
1671 West Avenue			
Parking Lot	57	42	-15
Right of Way			
West Ave from 8th St to 14th St	62	0	-62
West Ave from 14th St to Lincoln Rd	59	22	-37
Bay Rd from 14th St to Dade Canal	89	48	-41
8th St from West Ave to Alton Rd	20	12	-8
9th St from West Ave to Alton Rd	17	10	-7
11th St from West Ave to Alton Rd	18	7	-11
12th St from West Ave to Alton Rd	21	10	-11
13th St from West Ave to Alton Rd	15	8	-7
14th Ct from Bay Rd to Alton Rd	24	14	-10
14th Ter from Bay Rd to Alton Rd	0	0	0
15th St from Bay Rd to Alton Rd	16	21	5
Flamingo Way from Bay Rd to West Ave	0	0	0
15th Ter from Bay Rd to Alton Rd	32	14	-18
16th St from Bay Rd to Alton Rd	18	18	0
Lincoln Ter from Biscayne Bay to Bay Rd	22	22	0
Lincoln Ct from Lincoln Rd to Dade Canal	0	0	0
Lincoln Rd from Biscayne Bay to Alton Rd	59	49	-10
Total:	472	255	-217
Total for Project:	529	297	19 -232