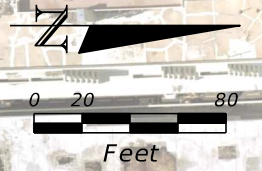




**NOTE:**  
 1. MAINTAIN DRIVEWAY ACCESS ON PINE TREE DRIVE, SHERIDAN AVENUE, AND W 46TH STREET AT ALL TIMES.  
 2. MAINTAIN ONE LANE IN EACH DIRECTION ALONG PINE TREE DRIVE.



**PHASING:**  
 1. SHIFT TRAFFIC TO EAST SIDE OF PINE TREE DRIVE.  
 2. CONTRACTOR TO REMOVE TEMPORARY TRAFFIC SIGNAL AND PERMANENT TRAFFIC SIGNAL AT INTERSECTION.  
 3. CONTRACTOR TO CONSTRUCT TEMPORARY ACCESS TO WEST SIDE PINE TREE DRIVE DRIVEWAYS BY PROVIDING CONNECTION TO SB PINE TREE DRIVE.  
 4. PROVIDE DETOUR SIGNAGE FOR SHERIDAN AVENUE AND W46TH STREET. SIGNAGE SHOULD DIRECT VEHICLES TO W45TH STREET AND W47TH STREET FOR ACCESS TO PINE TREE DRIVE.  
 3. CONSTRUCT PERMANENT PAVEMENT AND MEDIAN ISLANDS ALONG SHERIDAN AVENUE AND W 46TH STREET.  
 4. CONSTRUCT TEMPORARY PAVEMENT FOR ROUNDABOUT TRUCK APRON.

**LEGEND**  
 [Hatched Box] CONSTRUCTION AREA  
 [Arrow] DIRECTION OF TRAFFIC  
 [Dashed Line] TEMPORARY LANE STRIPING  
 [Square] TEMPORARY TRAFFIC CONTROL DEVICE

**PHASE 2**

| REVISIONS |             | DATE | DESCRIPTION | <br>Registry 696<br>Leonte I. Almonte, P.E.<br>P.E. License No. 70822<br>355 Alhambra Circle - Suite 1400<br>Coral Gables, Florida 33134 | <br>COUNTY PROJECT<br>MIAMI-DADE PINE TREE DRIVE & 46TH STREET |                               | SHEET NO.<br><br>TRAFFIC CONTROL PLAN |
|-----------|-------------|------|-------------|--|--|-------------------------------|---------------------------------------|
| DATE      | DESCRIPTION |      |             |  | MIAMI-DADE   | PINE TREE DRIVE & 46TH STREET |                                       |
|           |             |      |             |  |  |                               |                                       |

THE OFFICIAL RECORD OF THIS SHEET IS THE ELECTRONIC FILE DIGITALLY SIGNED AND SEALED UNDER RULE 61G15-23.004, F.A.C.

**NOTE:**  
1. MAINTAIN DRIVEWAY ACCESS ON PINE TREE DRIVE AT ALL TIMES



**PHASING:**  
1. CONSTRUCT TEMPORARY TRAFFIC CONTROL DEVICES FOR PINE TREE DRIVE. PROVIDE TEMPORARY LIMIT LINE, STOP SIGN, AND STOP PAVEMENT MARKING ON SHERIDAN AVENUE AND W46TH STREET.  
2. SHIFT TRAFFIC TO WEST SIDE OF PINE TREE DRIVE AND MAINTAIN LOCAL ACCESS TO PINE TREE DRIVE.  
3. CONSTRUCT PERMANENT PAVEMENT ON EAST SIDE OF PINE TREE DRIVE.  
4. CONSTRUCT TEMPORARY PAVEMENT AT MEDIAN LOCATIONS.

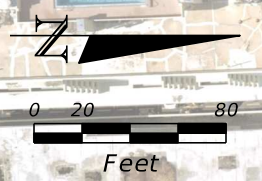
**LEGEND**  
 CONSTRUCTION AREA  
 DIRECTION OF TRAFFIC  
 TEMPORARY LANE STRIPING  
 TEMPORARY TRAFFIC CONTROL DEVICE

**PHASE 3A**

| REVISIONS |             | DATE | DESCRIPTION | <br>Registry 696<br>Leante I. Almonte, P.E.<br>P.E. License No. 70822<br>355 Alhambra Circle - Suite 1400<br>Coral Gables, Florida 33134 | <br>COUNTY PROJECT<br>MIAMI-DADE PINE TREE DRIVE & 46TH STREET |                               | SHEET NO.<br>TRAFFIC CONTROL PLAN |
|-----------|-------------|------|-------------|--|--|-------------------------------|-----------------------------------|
| DATE      | DESCRIPTION |      |             |  | MIAMI-DADE   | PINE TREE DRIVE & 46TH STREET |                                   |
|           |             |      |             |  |  |                               |                                   |

THE OFFICIAL RECORD OF THIS SHEET IS THE ELECTRONIC FILE DIGITALLY SIGNED AND SEALED UNDER RULE 61G15-23.004, F.A.C.

**NOTE:**  
1. MAINTAIN DRIVEWAY ACCESS ON PINE TREE DRIVE AT ALL TIMES



**PHASING:**  
1. MAINTAIN TRAFFIC CONTROL FROM PHASE 3A.  
2. CONSTRUCT PERMANENT PAVEMENT.  
3. CONTRACTOR TO CONSTRUCT TEMPORARY ACCESS TO EAST SIDE PINE TREE DRIVE DRIVEWAYS BY PROVIDING CONNECTION TO NB PINE TREE DRIVE.

**LEGEND**  
 CONSTRUCTION AREA  
 DIRECTION OF TRAFFIC  
 TEMPORARY LANE STRIPING  
 TEMPORARY TRAFFIC CONTROL DEVICE

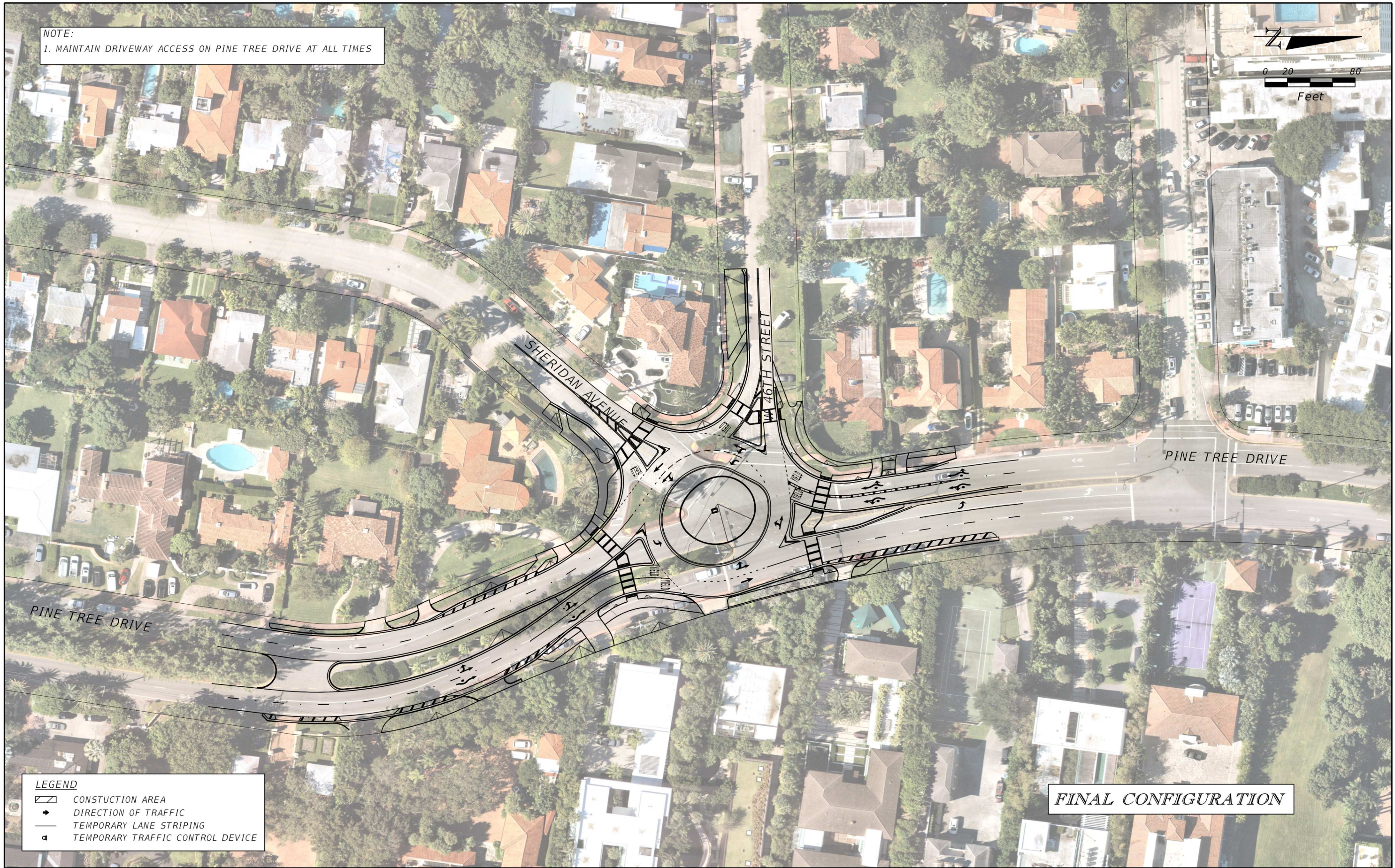
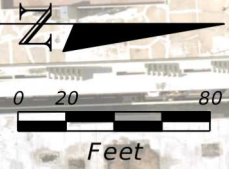
**PHASE 3B**

| REVISIONS |             | REVISIONS |             | <b>Kimley»Horn</b><br>Registry 696<br>Leante I. Almonte, P.E.<br>P.E. License No. 70822<br>355 Alhambra Circle - Suite 1400<br>Coral Gables, Florida 33134 | <b>MIAMI BEACH</b><br>COUNTY PROJECT<br>MIAMI-DADE PINE TREE DRIVE & 46TH STREET |                               | <b>TRAFFIC CONTROL PLAN</b> | SHEET NO. |
|-----------|-------------|-----------|-------------|--|--|-------------------------------|-----------------------------|-----------|
| DATE      | DESCRIPTION | DATE      | DESCRIPTION |  | MIAMI-DADE   | PINE TREE DRIVE & 46TH STREET |                             |           |
|           |             |           |             |  |  |                               |                             |           |

THE OFFICIAL RECORD OF THIS SHEET IS THE ELECTRONIC FILE DIGITALLY SIGNED AND SEALED UNDER RULE 61G15-23.004, F.A.C.



**NOTE:**  
1. MAINTAIN DRIVEWAY ACCESS ON PINE TREE DRIVE AT ALL TIMES



**LEGEND**

|  |                                  |
|--|----------------------------------|
|  | CONSTRUCTION AREA                |
|  | DIRECTION OF TRAFFIC             |
|  | TEMPORARY LANE STRIPING          |
|  | TEMPORARY TRAFFIC CONTROL DEVICE |

**FINAL CONFIGURATION**

| REVISIONS |             |
|-----------|-------------|
| DATE      | DESCRIPTION |
|           |             |
|           |             |

**Kimley»Horn**  
 Registry 696  
 Leante I. Almonte, P.E.  
 P.E. License No. 70822  
 355 Alhambra Circle - Suite 1400  
 Coral Gables, Florida 33134

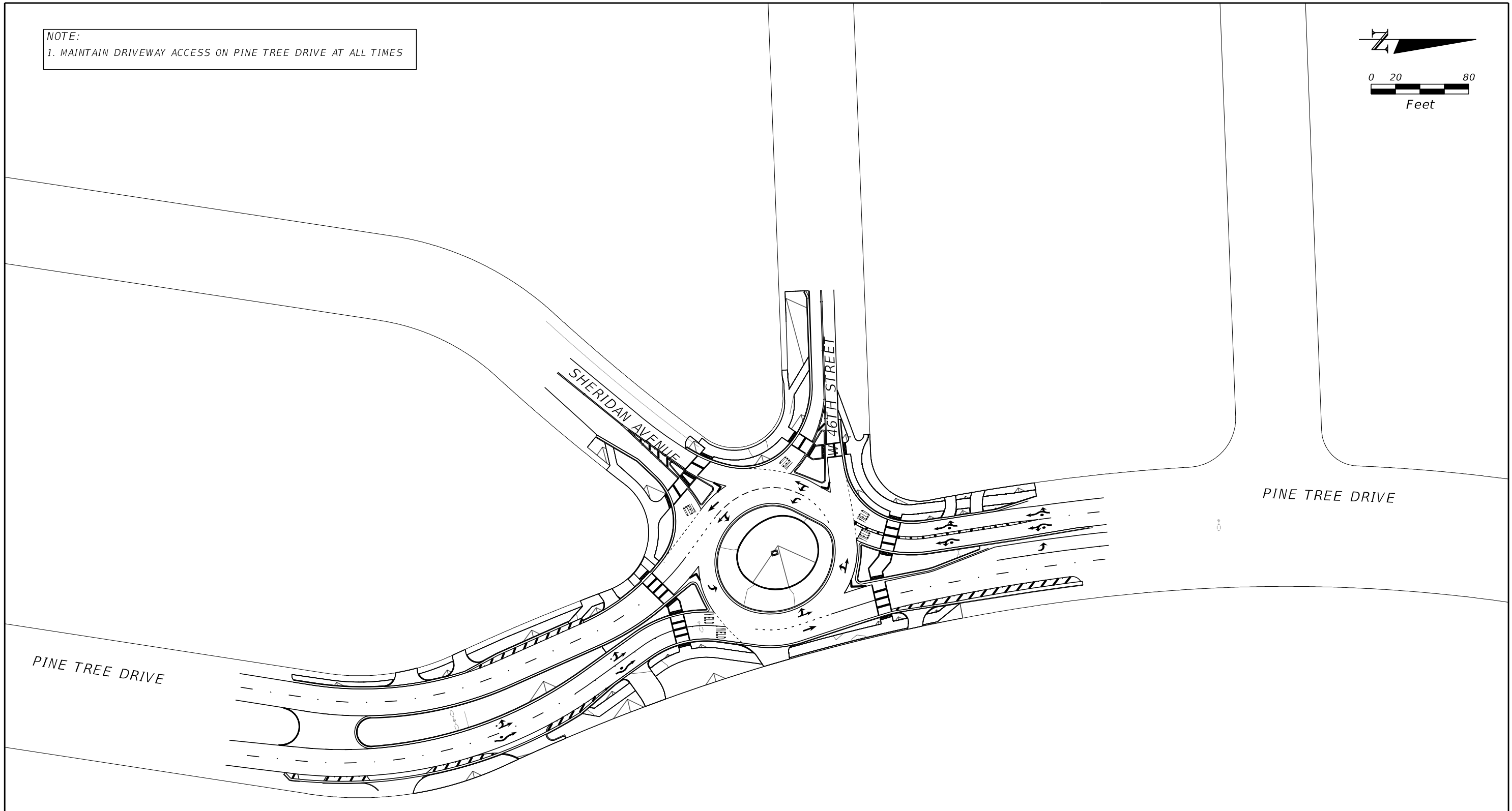
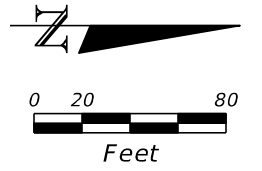
|                    |                               |
|--------------------|-------------------------------|
| <b>MIAMI BEACH</b> |                               |
| COUNTY             | PROJECT                       |
| MIAMI-DADE         | PINE TREE DRIVE & 46TH STREET |

**TRAFFIC CONTROL PLAN**

SHEET NO.

THE OFFICIAL RECORD OF THIS SHEET IS THE ELECTRONIC FILE DIGITALLY SIGNED AND SEALED UNDER RULE 61G15-23.004, F.A.C.

NOTE:  
1. MAINTAIN DRIVEWAY ACCESS ON PINE TREE DRIVE AT ALL TIMES



**LEGEND**  
 [Hatched Box] CONSTRUCTION AREA  
 [Arrow] DIRECTION OF TRAFFIC  
 [Dashed Line] TEMPORARY LANE STRIPING  
 [Square] TEMPORARY TRAFFIC CONTROL DEVICE

**FINAL CONFIGURATION**

| REVISIONS |             | DATE | DESCRIPTION | <br>Registry 696<br>Leonte I. Almonte, P.E.<br>P.E. License No. 70822<br>355 Alhambra Circle - Suite 1400<br>Coral Gables, Florida 33134 |            |                               | <b>TRAFFIC CONTROL PLAN</b> | SHEET NO. |
|-----------|-------------|------|-------------|--|------------|-------------------------------|-----------------------------|-----------|
| DATE      | DESCRIPTION |      |             |  | COUNTY     | PROJECT                       |                             |           |
|           |             |      |             |  | MIAMI-DADE | PINE TREE DRIVE & 46TH STREET |                             |           |

THE OFFICIAL RECORD OF THIS SHEET IS THE ELECTRONIC FILE DIGITALLY SIGNED AND SEALED UNDER RULE 61G15-23.004, F.A.C.